

# V&V Reference Report

## L2 ASCDS Version : 8.4.4

Observation 8605 - L2 Version 2  
Chandra X-Ray Center

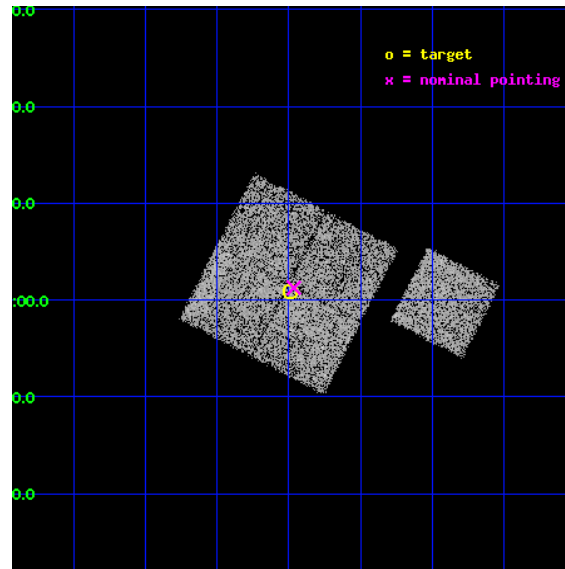
L2 Processing Date : May 19 2012

## Contents

<b>1</b>	<b>Front</b>	<b>2</b>
<b>2</b>	<b>OBI</b>	<b>3</b>
2.1	OBI . . . . .	3
2.1.1	Images . . . . .	3
2.1.2	Bias . . . . .	3
2.1.3	Parameters . . . . .	4
2.1.4	Events . . . . .	4
2.2	Compared Parameters . . . . .	5
2.3	Aspect . . . . .	6
2.4	Star Slots . . . . .	9
2.4.1	Slot 3 . . . . .	9
2.4.2	Slot 4 . . . . .	10
2.4.3	Slot 5 . . . . .	11
2.4.4	Slot 6 . . . . .	12
2.4.5	Slot 7 . . . . .	13
2.5	FID Slots . . . . .	14
2.5.1	Slot 0 . . . . .	14
2.5.2	Slot 1 . . . . .	15
2.5.3	Slot 2 . . . . .	16
<b>A</b>	<b>Summary</b>	<b>17</b>
A.1	Status . . . . .	17
A.2	Comments . . . . .	17

# 1 Front

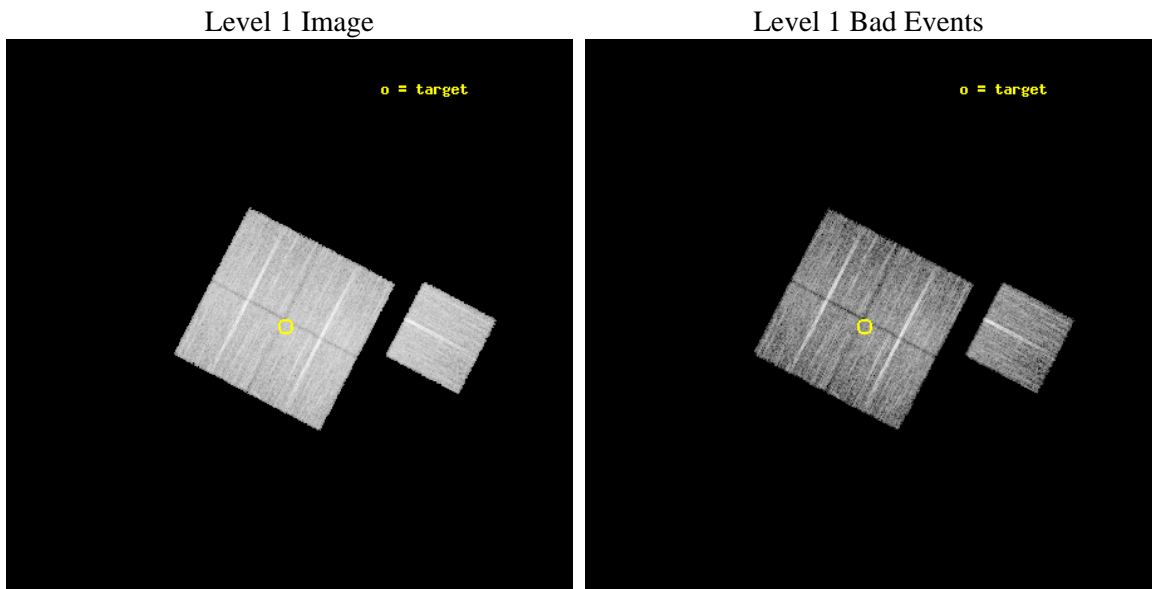
seq_num	900742	Sequence number
obs_id	8605	Observation id
title	Chandra Observations of the DEEP2 Fields	Proposal title
observer	Dr. Stephen Murray	Principal investigator
object	DEEP2 Field 3	Source name
dtcycle	0	&#160
cycle	P	events from which exps? Prim/Second/Both
ra_targ	353.3717	Observer's specified target RA [deg]
dec_targ	0.015293	Observer's specified target Dec [deg]
ra_nom	353.36601213504	Nominal RA [deg]
dec_nom	0.021024779854913	Nominal Dec [deg]
roll_nom	117.50864034777	Nominal Roll [deg]
revision	2	Processing version of data
ontime	8955.9000688791	Sum of GTIs [s]
livetime	8838.8846412415	Livetime [s]
ontime0	8955.9000688791	Sum of GTIs [s]
ontime1	8955.9000688791	Sum of GTIs [s]
ontime2	8955.9000688791	Sum of GTIs [s]
ontime3	8955.9000688791	Sum of GTIs [s]
ontime6	8952.7590684891	Sum of GTIs [s]
l2events	31180	Number of level 2 events



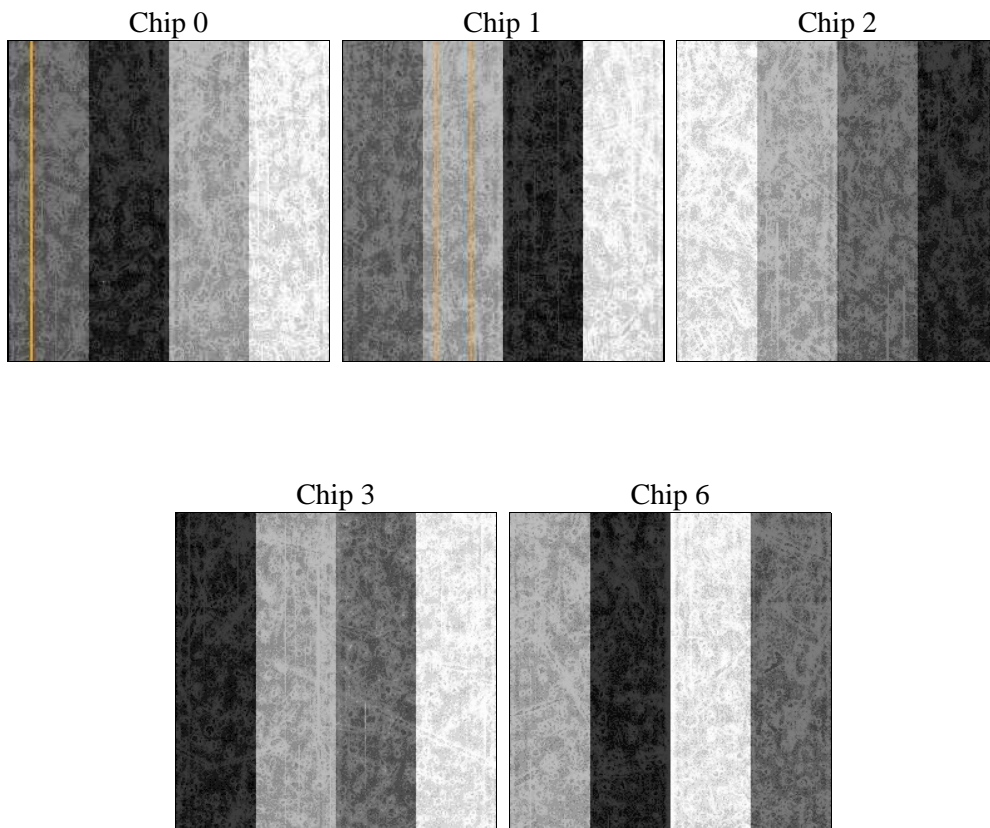
## 2 OBI

### 2.1 OBI

#### 2.1.1 Images



#### 2.1.2 Bias



### 2.1.3 Parameters

obi_num	0	Obi number	sched_exp_time	8771.000000	[s] Scheduled observation exposure time
ascdsver	8.4.4	Processing system revision	ontime	8955.9000688791	Sum of GTIs [s]
caldsver	4.4.9	&#160	ontime0	8955.9000688791	Sum of GTIs [s]
date	2012-05-19T01:57:19	Date and time of file creation	ontime1	8955.9000688791	Sum of GTIs [s]
revision	2	Processing version of data	ontime2	8955.9000688791	Sum of GTIs [s]
			ontime3	8955.9000688791	Sum of GTIs [s]
			ontime6	8952.7590684891	Sum of GTIs [s]
			l1events	384601	Number of level 1 events

### 2.1.4 Events

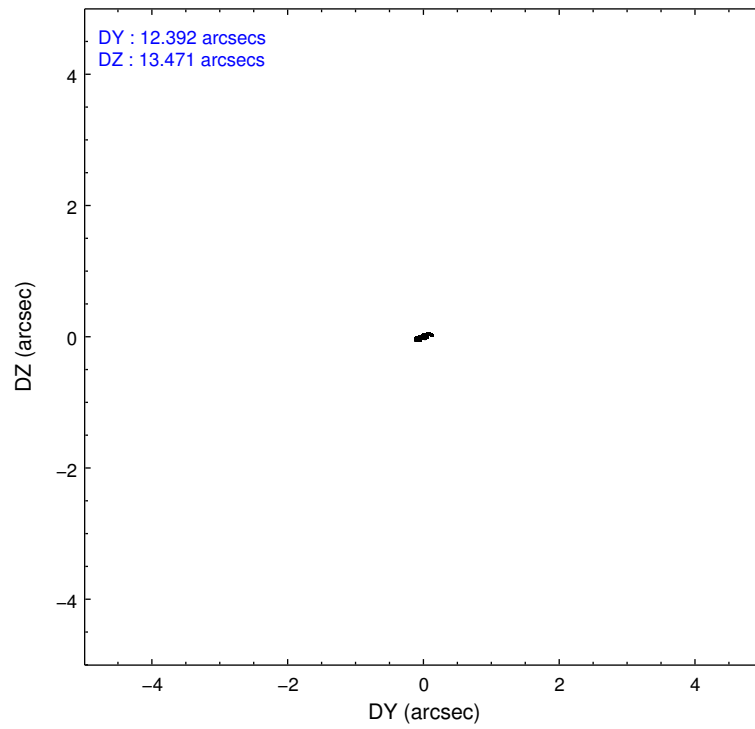
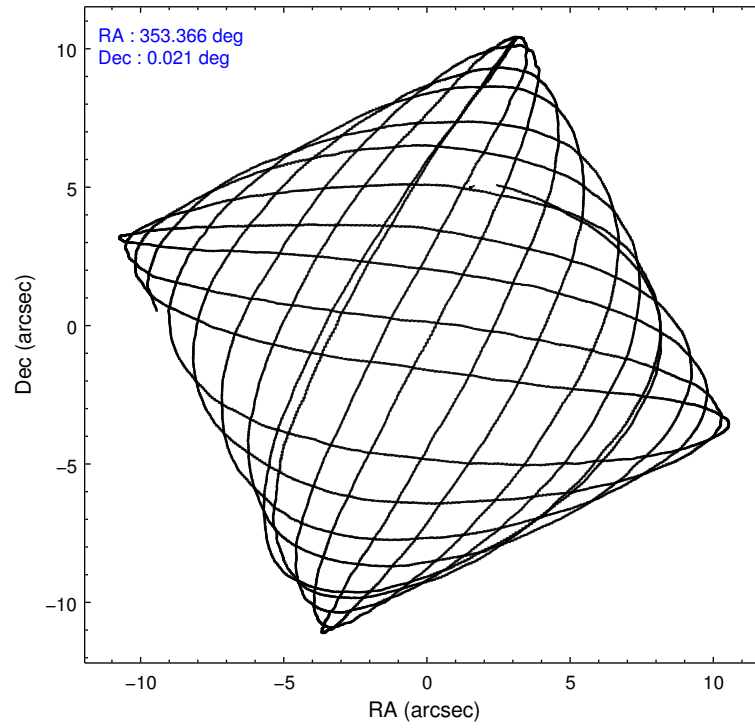
	ccd 0	ccd 1	ccd 2	ccd 3	ccd 6
level 1 events	71967	74690	82107	77886	77951
rejected events	64600	66505	74999	70599	70300
rejected %	89%	89%	91%	90%	90%

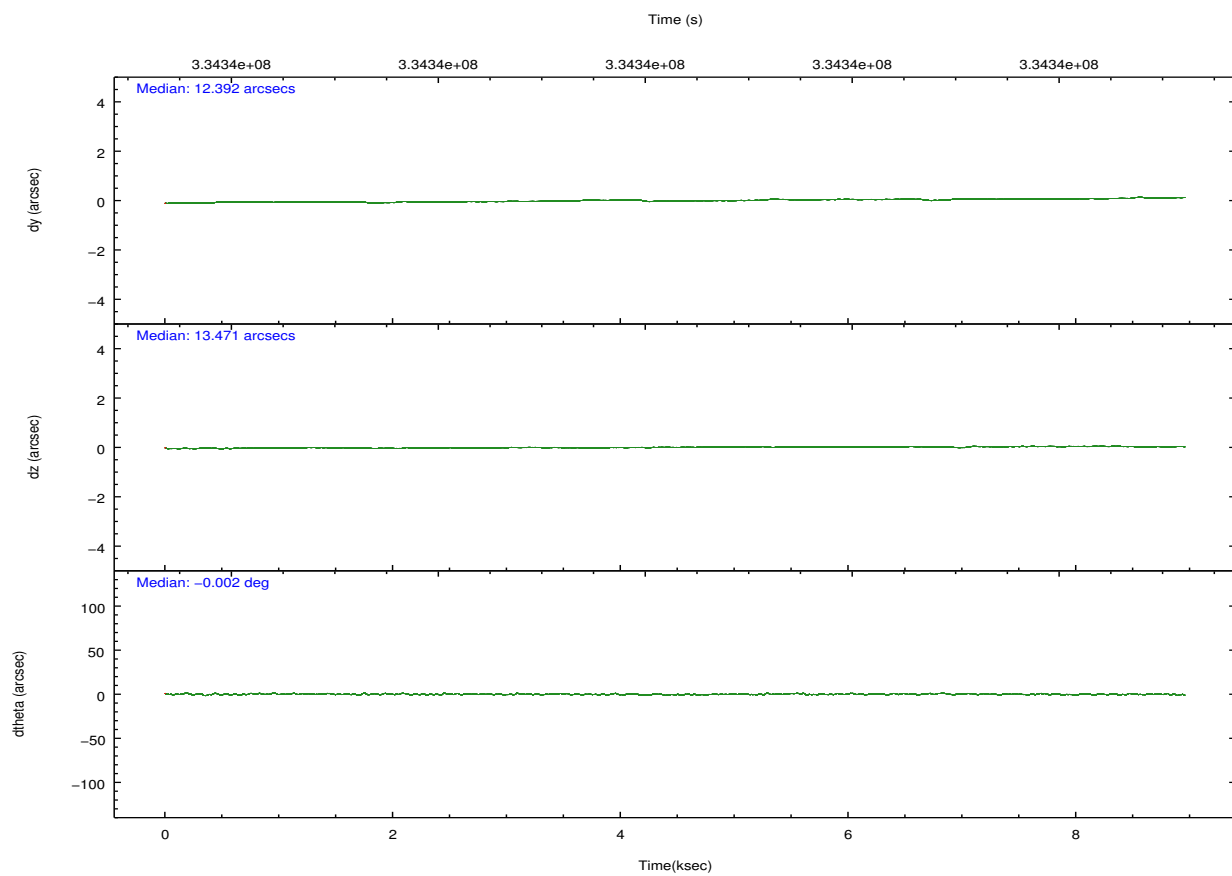
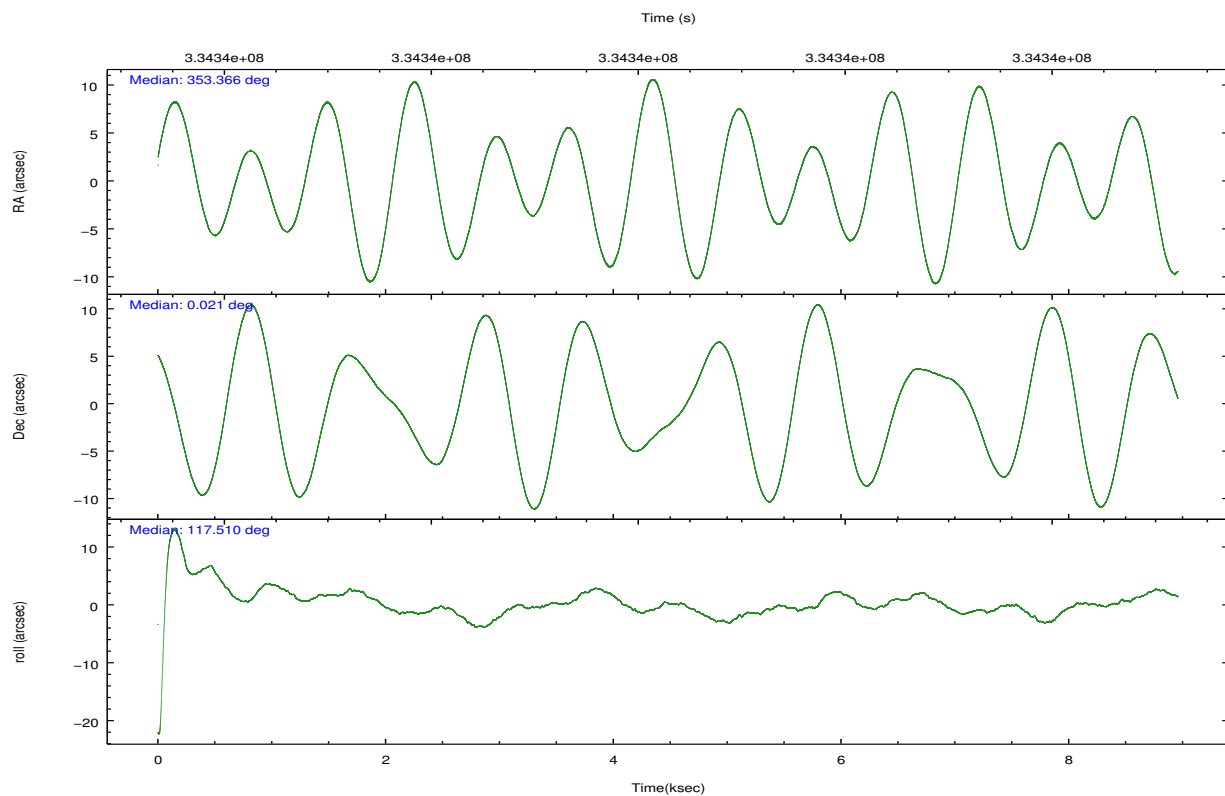
	ccd 0	ccd 1	ccd 2	ccd 3	ccd 6
grade 0 events	2613	3006	2646	2702	2828
	3%	4%	3%	3%	3%
grade 1 events	33	46	47	48	39
	0%	0%	0%	0%	0%
grade 2 events	1862	2000	1856	1737	1762
	2%	2%	2%	2%	2%
grade 3 events	854	901	732	809	803
	1%	1%	0%	1%	1%
grade 4 events	791	891	787	816	795
	1%	1%	0%	1%	1%
grade 5 events	2683	3022	2519	3302	3148
	3%	4%	3%	4%	4%
grade 6 events	1532	1703	1372	1533	1767
	2%	2%	1%	1%	2%
grade 7 events	61599	63121	72148	66939	66809
	85%	84%	87%	85%	85%

## 2.2 Compared Parameters

Parameter	Planned	Actual	Parameter	Planned	Actual
Instrument	ACIS	ACIS	Obspar format version number	7	7
Detector	ACIS-01236	ACIS-01236	Obspar file type	PREDICTED	ACTUAL
Grating	NONE	NONE	Obspar update status	NONE	UPDATED
Data mode	VFAINT	VFAINT	CCD I0 on	Y	Y
Observation mode	POINTING	POINTING	CCD I1 on	Y	Y
[deg] Pointing RA	353.389254	353.3660121350371	CCD I2 on	Y	Y
[deg] Pointing Dec	0.006348	0.02102477985491349	CCD I3 on	Y	Y
[deg] Pointing Roll	117.300001	117.5086403477739	CCD S0 on	N	N
[mm] SIM focus pos	-0.782348	-0.7809083437167272	CCD S1 on	N	N
[mm] SIM defocus	0	0.001439871863259334	CCD S2 on	O1	Y
[mm] SIM translation stage pos	-233.592463	-233.5874344608287	CCD S3 on	N	N
[mm] SIM translation stage offset	0	-0.005018542100998502	CCD S4 on	N	N
[s] Observation start time (MET)	334335997.184000	334335589.63132	CCD S5 on	N	N
Observation start date	2008-08-05T15:05:32	2008-08-05T14:59:49	Number of optional ACIS chips dropped	0	0
[s] Observation end time (MET)	334344768.184000	334344902.26928	On-chip summing requested	N	N
Observation end date	2008-08-05T17:31:43	2008-08-05T17:35:02	Subarray requested	NONE	NONE
Read mode	TIMED	TIMED	Alternating exposures requested	N	N
			[s] Primary exposure time	0.000000	3.1

## 2.3 Aspect



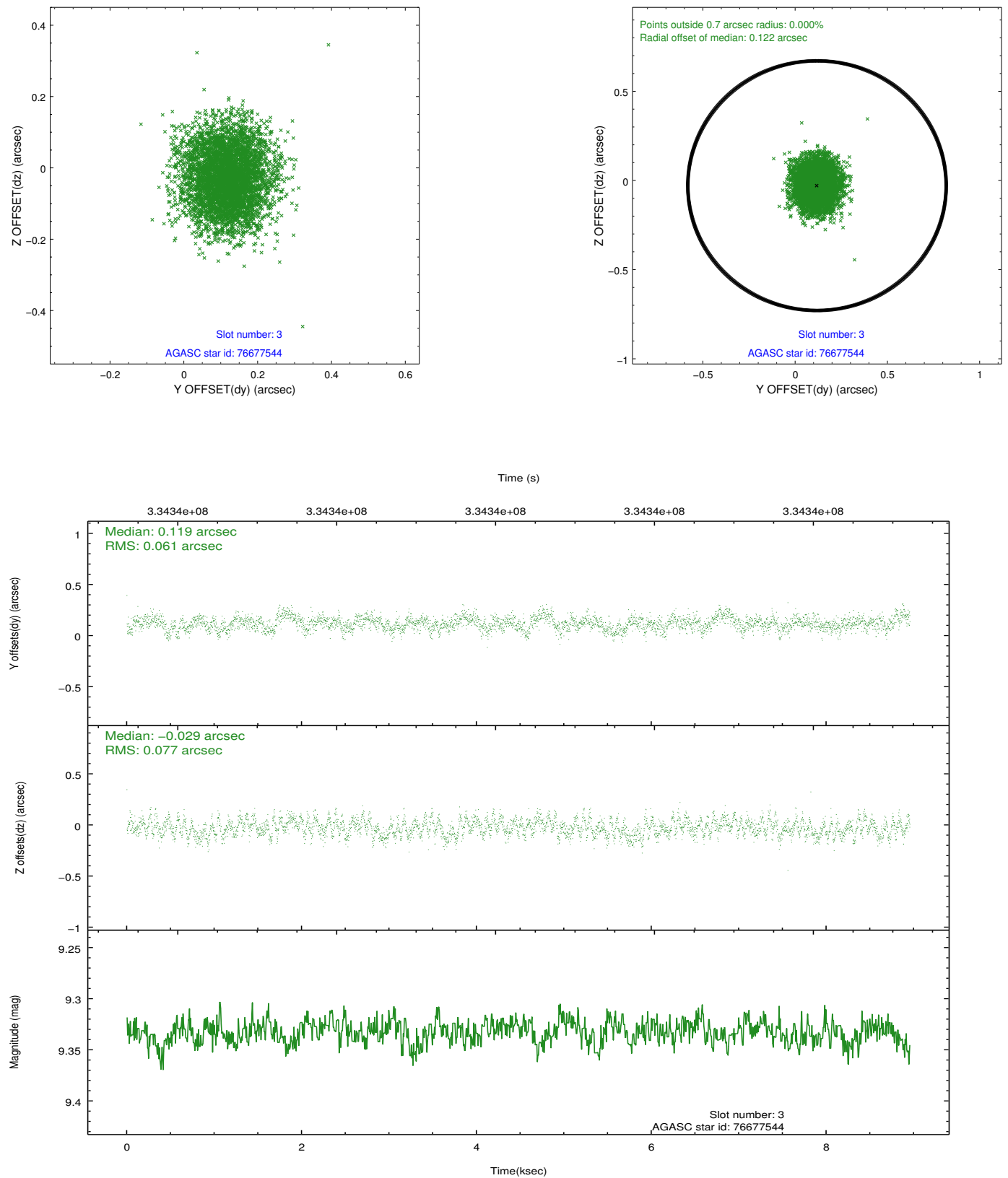


### Slot Statistics

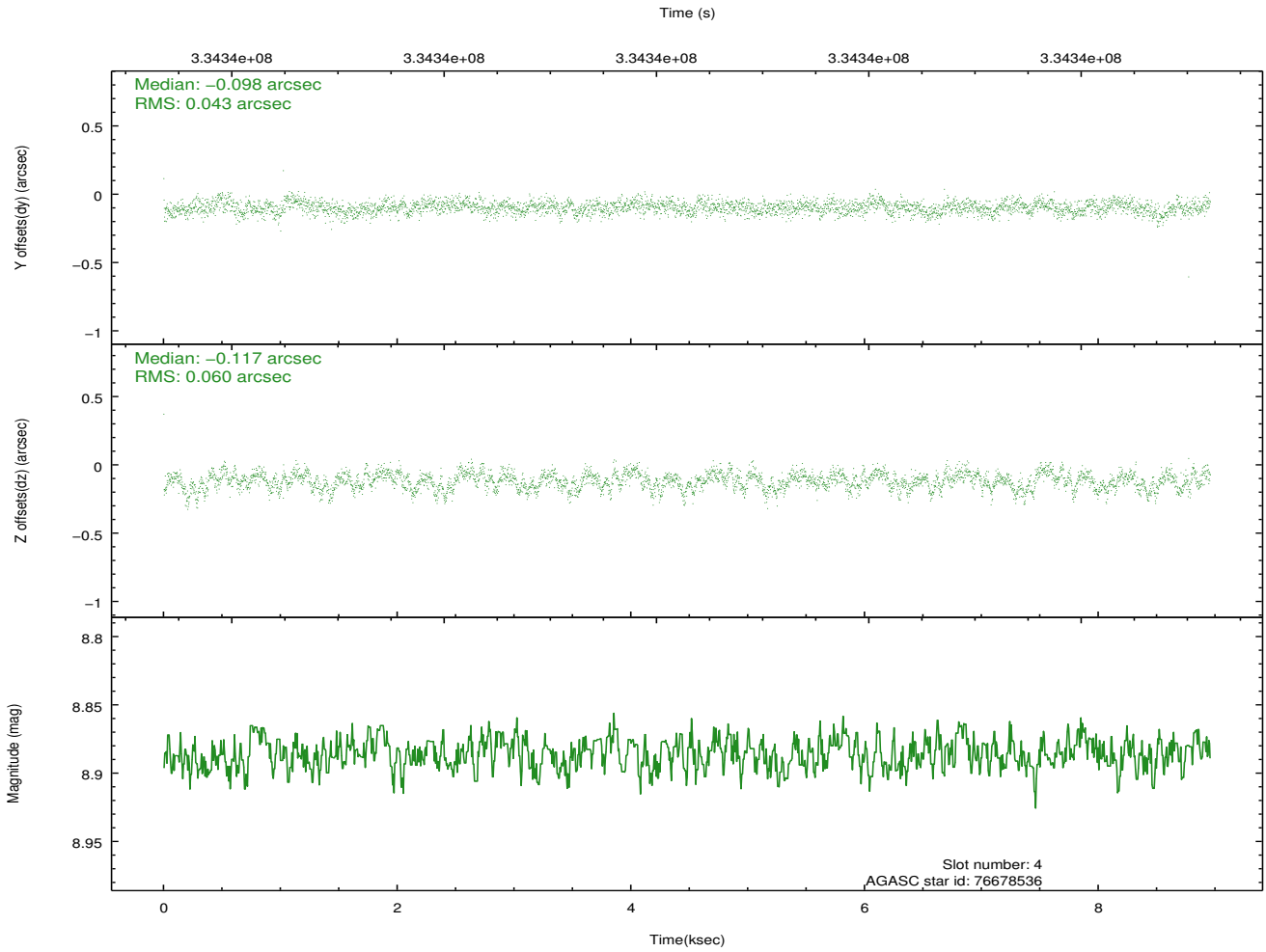
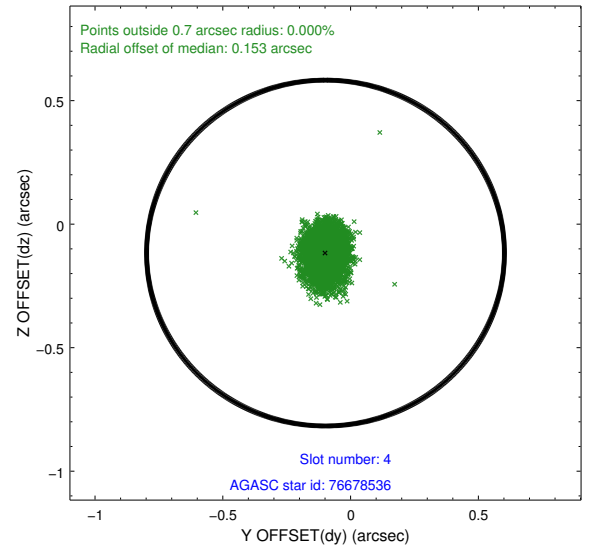
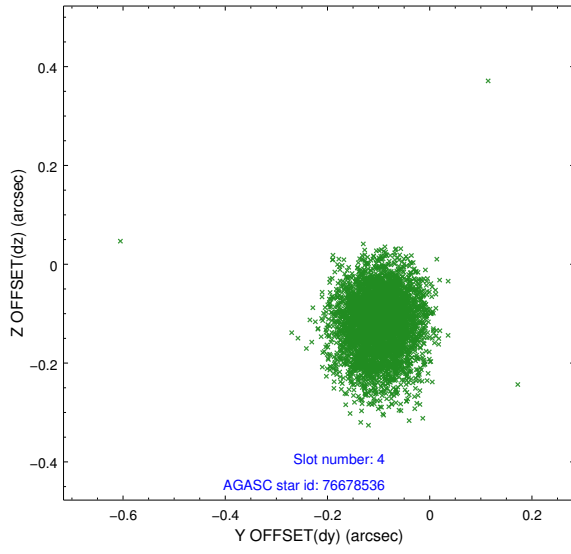
slot	status	id	mag	n_pts	med_dy	med_dz	dr1	dr2	ra	dec	mean_y	mean_z
0	FID	ACIS-I-1	7.05	2185	-0.034	0.047	0.008	0.013	0.000000	0.000000	927.10	-836.98
1	FID	ACIS-I-4	7.00	2185	0.141	0.007	0.008	0.013	0.000000	0.000000	2147.66	1062.47
2	FID	ACIS-I-5	7.04	2185	-0.206	0.017	0.007	0.013	0.000000	0.000000	-1820.28	1061.04
3	GUIDE	76677544	9.33	4361	0.119	-0.029	0.107	0.167	353.780973	0.190917	-55.91	-1557.74
4	GUIDE	76678536	8.89	4370	-0.098	-0.117	0.078	0.128	353.237558	0.180446	807.47	197.31
5	GUIDE	76685264	9.70	4366	-0.209	0.053	0.124	0.197	353.301878	0.237362	883.59	-101.69
6	GUIDE	688260544	8.36	4370	0.097	-0.091	0.069	0.108	353.530418	-0.423696	-1608.27	258.45
7	GUIDE	688265920	8.13	4367	0.091	0.184	0.073	0.114	353.620473	-0.325855	-1444.72	-190.72

## 2.4 Star Slots

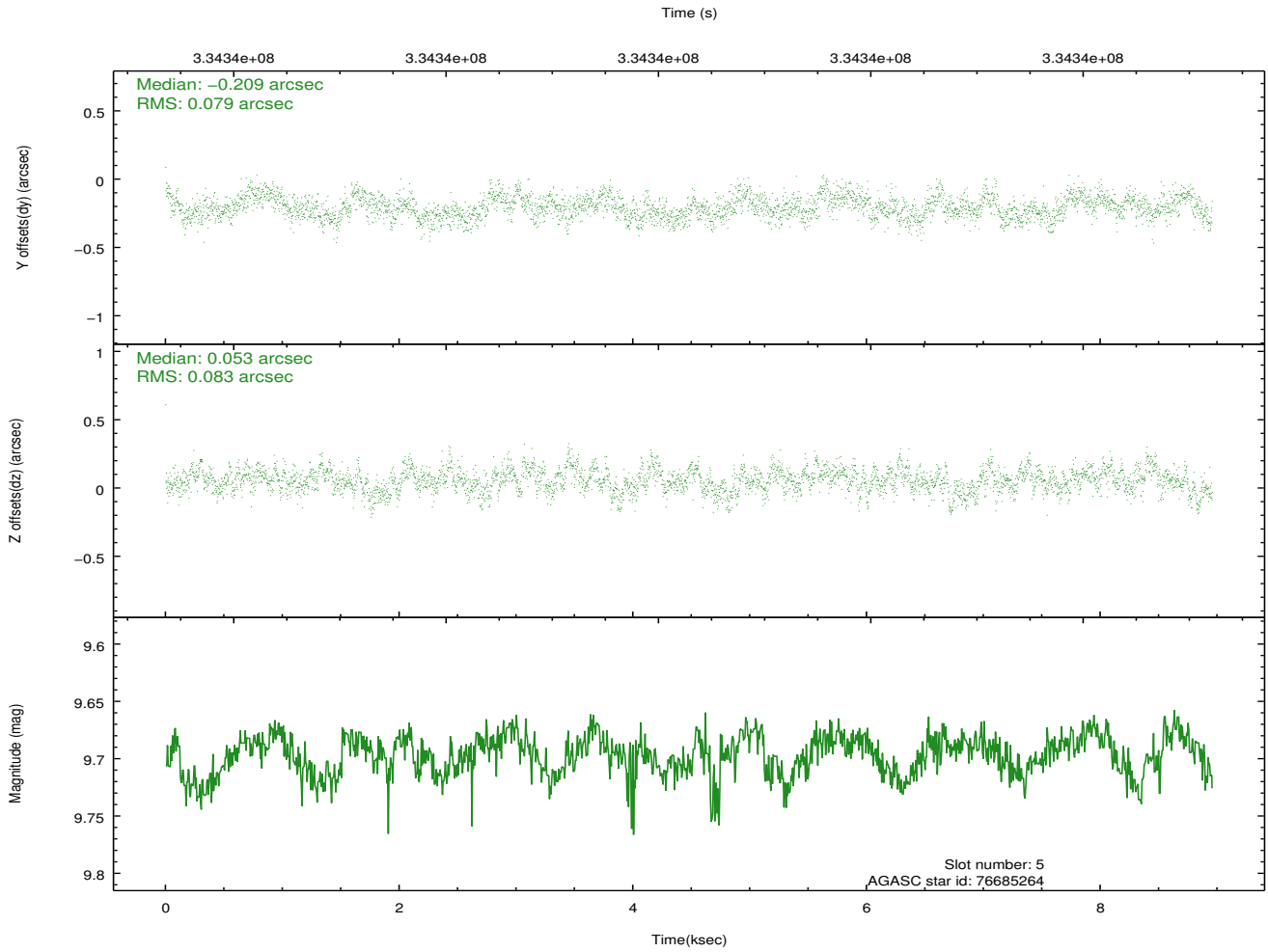
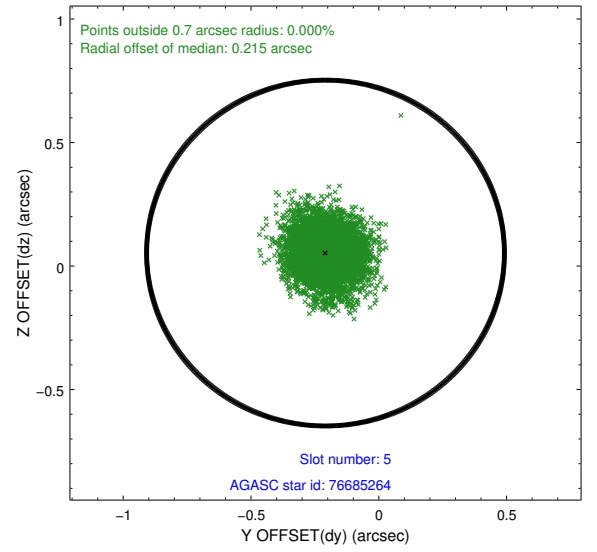
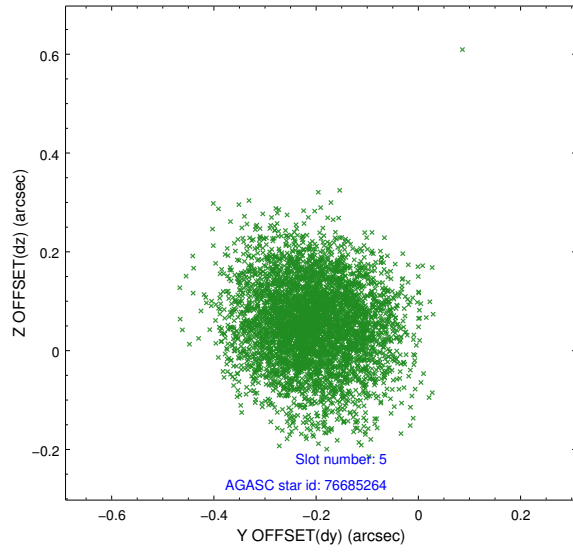
### 2.4.1 Slot 3



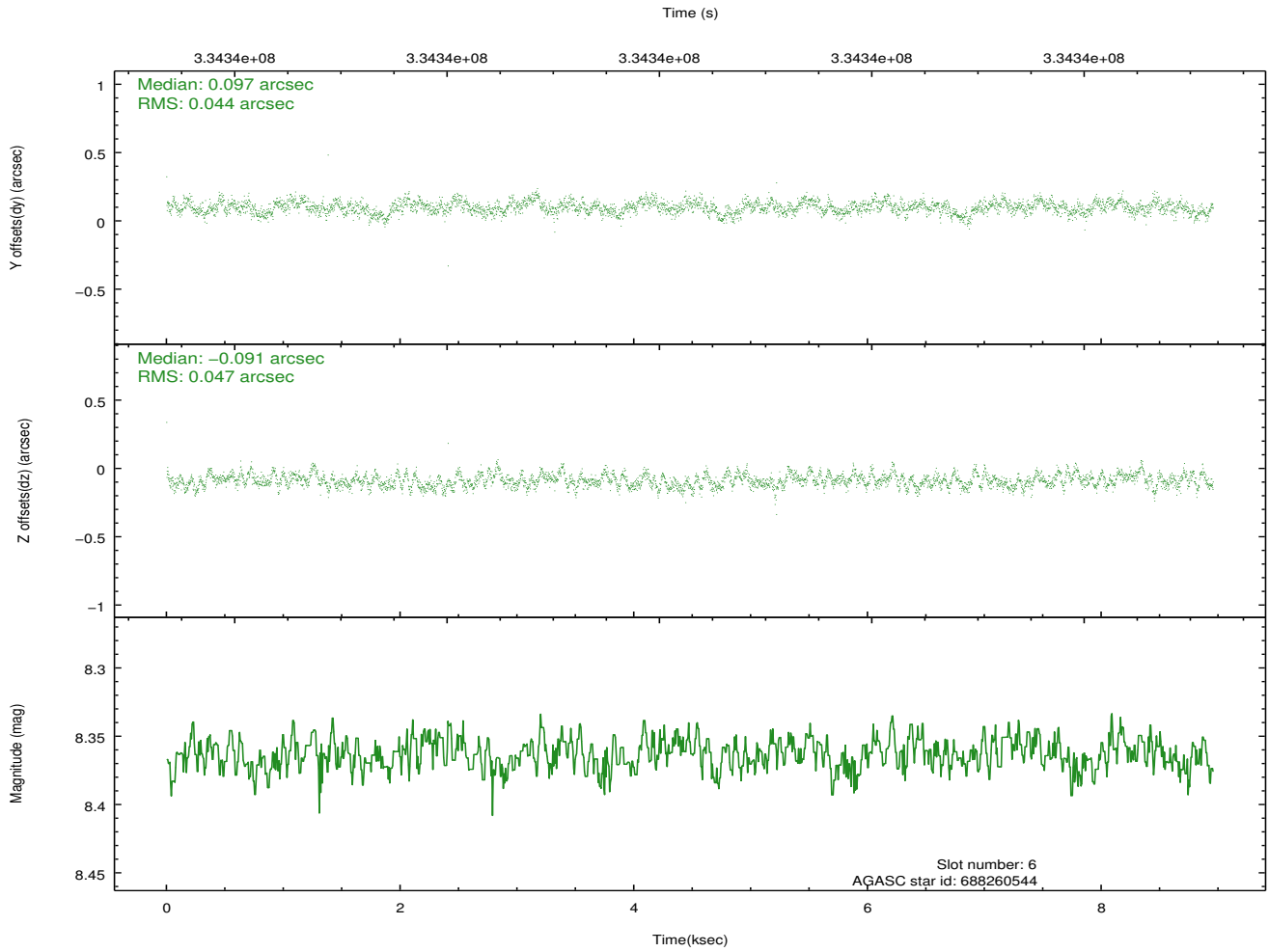
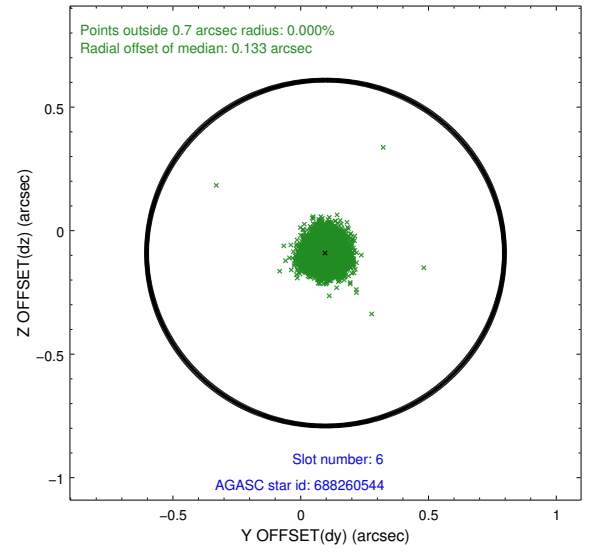
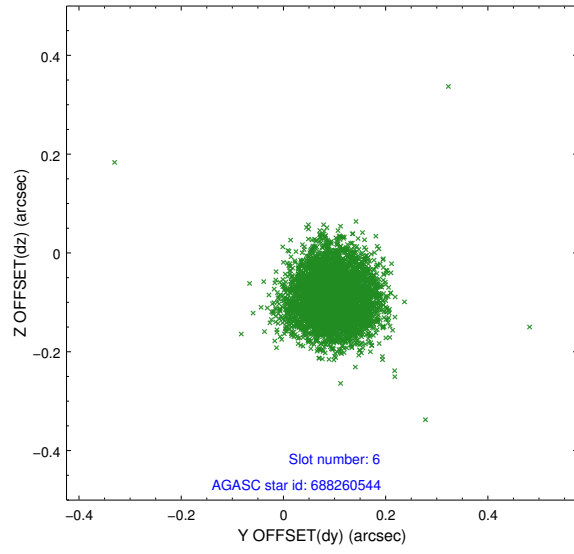
## 2.4.2 Slot 4



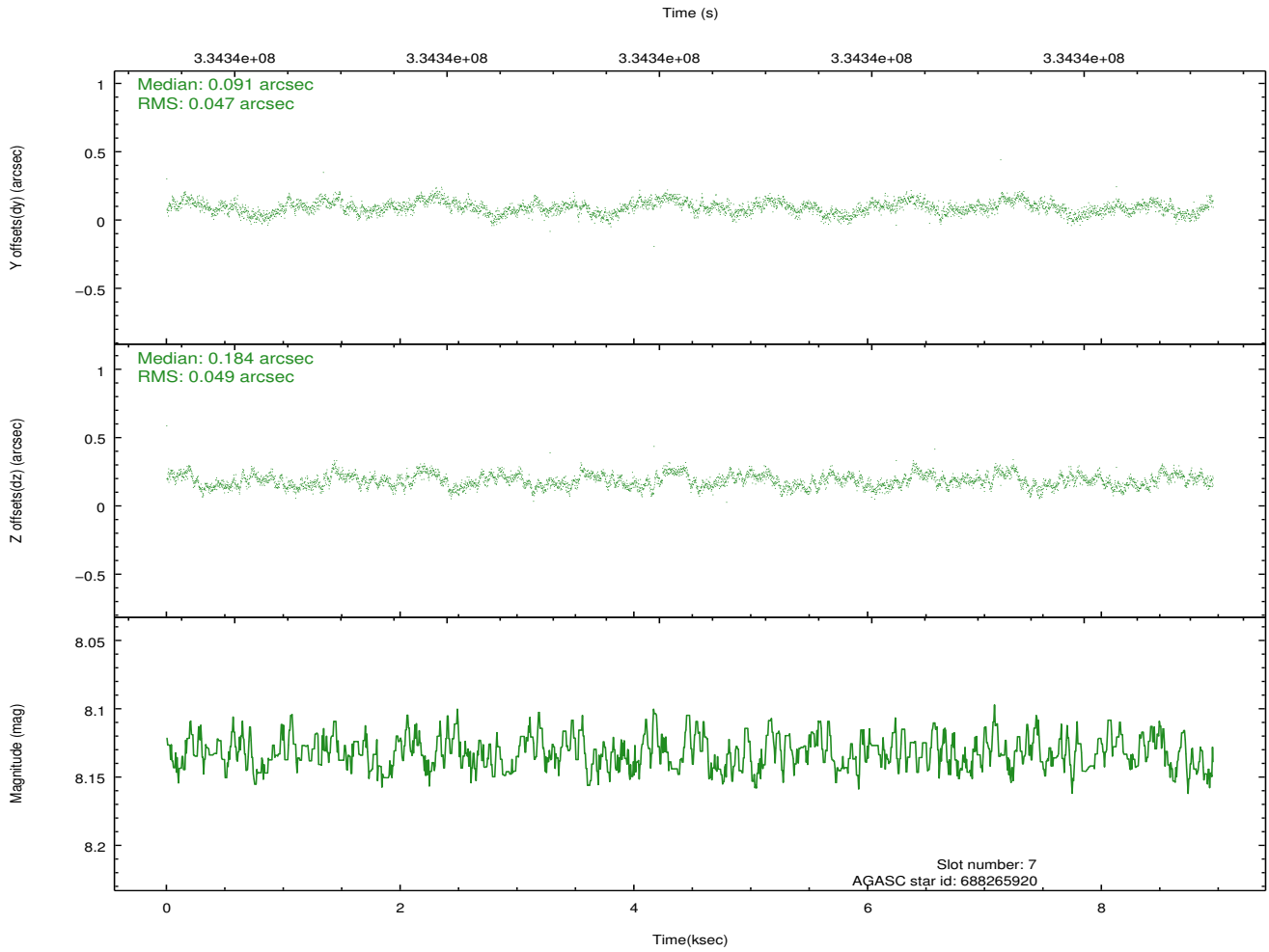
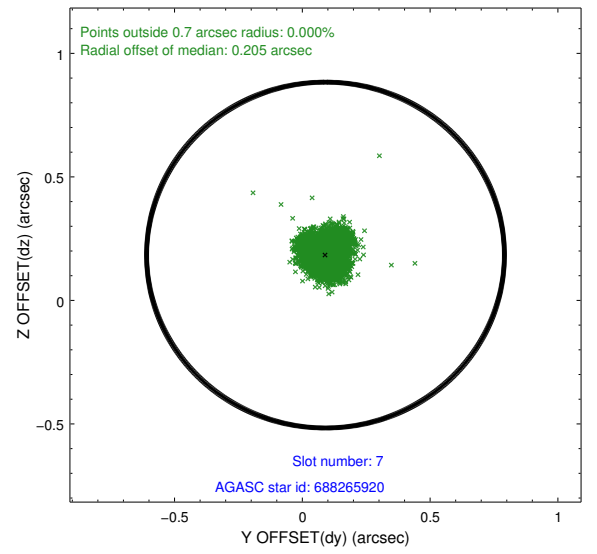
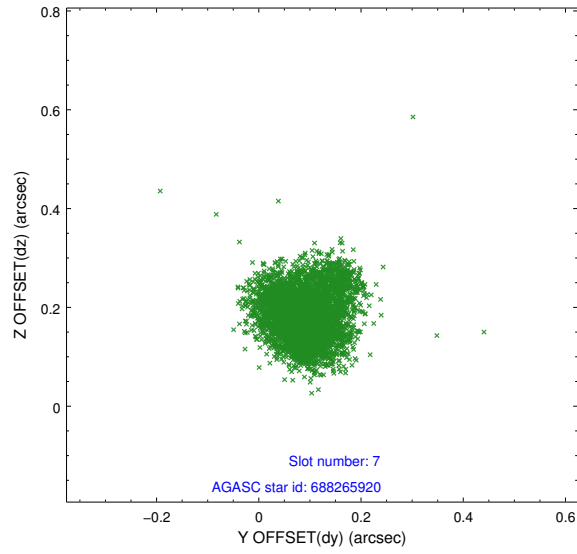
### 2.4.3 Slot 5



## 2.4.4 Slot 6

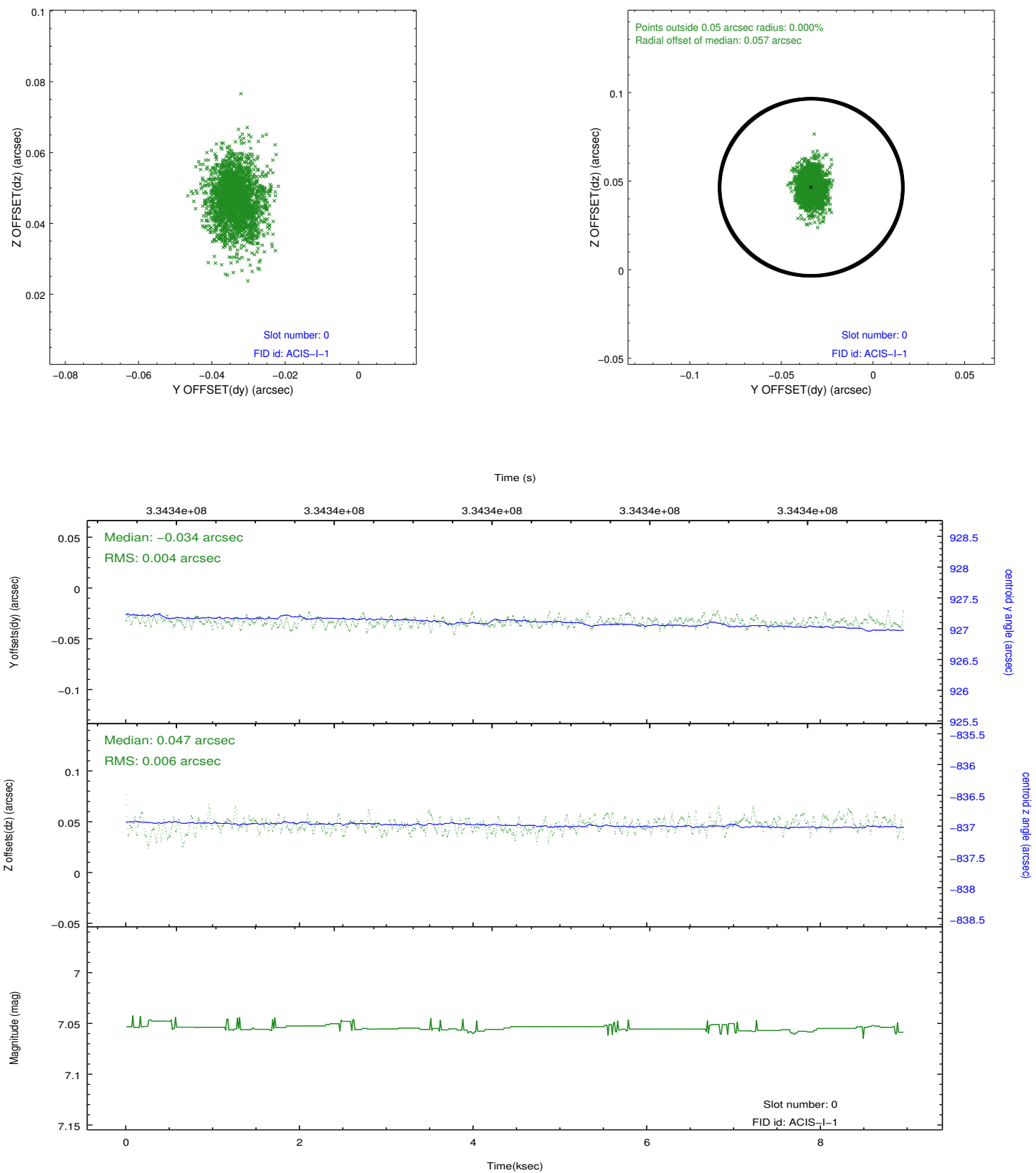


## 2.4.5 Slot 7

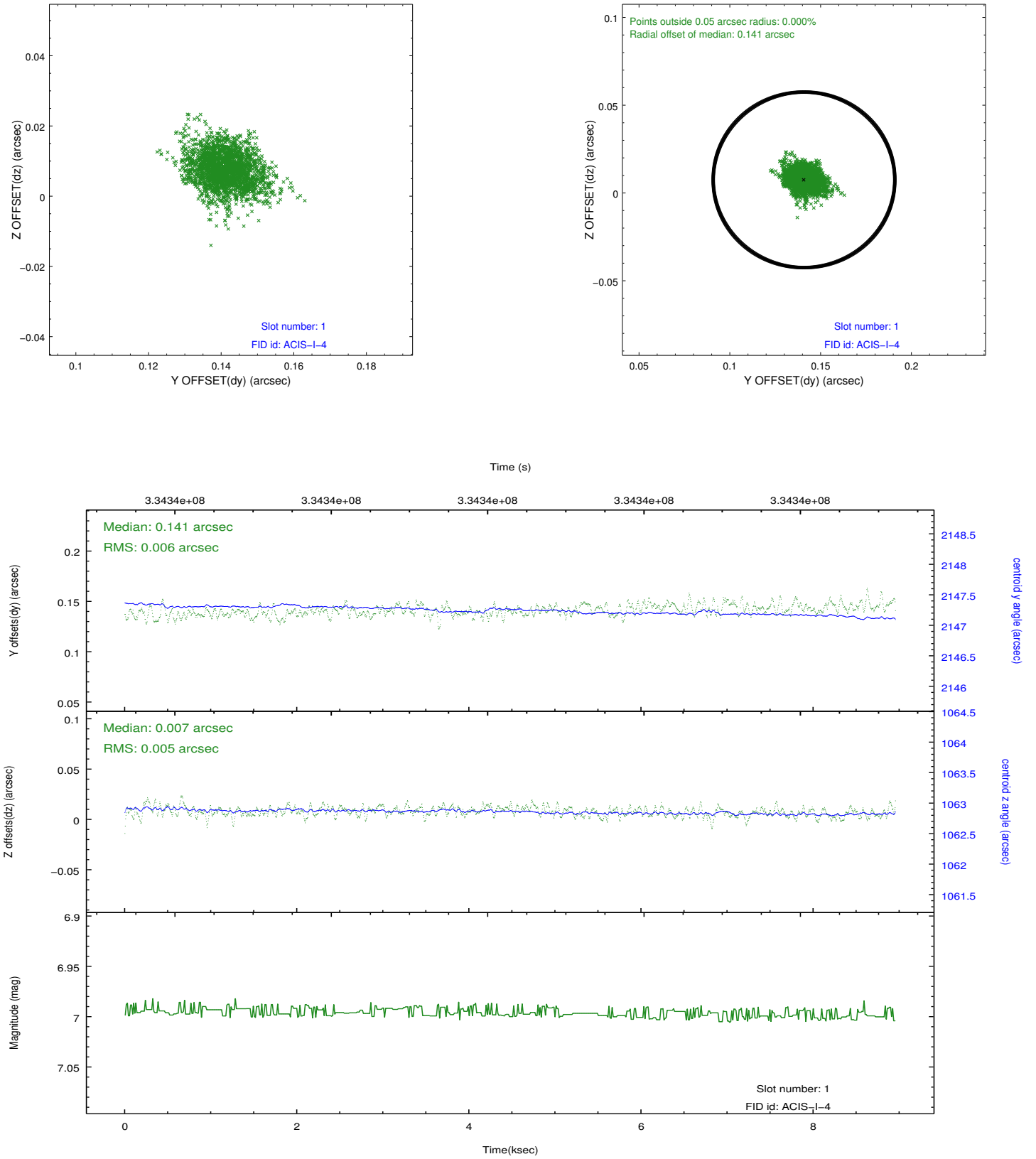


## 2.5 FID Slots

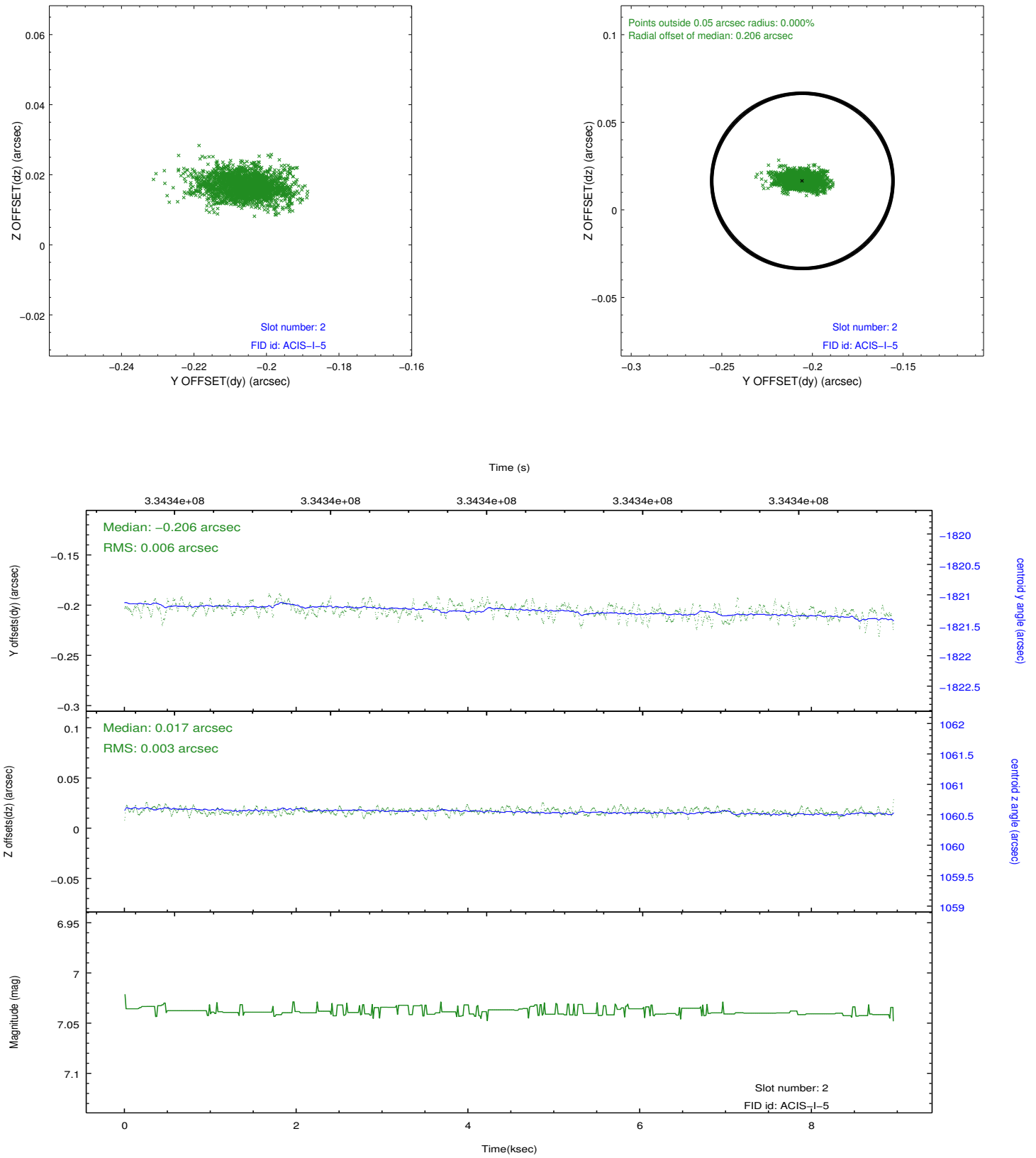
### 2.5.1 Slot 0



## 2.5.2 Slot 1



### 2.5.3 Slot 2



## A Summary

### A.1 Status

V&V Scientist	Beth Sundheim
V&V Date (YYYY-MM-DD)	2012.05.27
V&V Edition	1
V&V Disposition and Status	OK
V&V Charge Time	8.95590006

### A.2 Comments