

V&V Reference Report

L2 ASCDS Version : 8.4.4

Observation 9761 - L2 Version 2
Chandra X-Ray Center

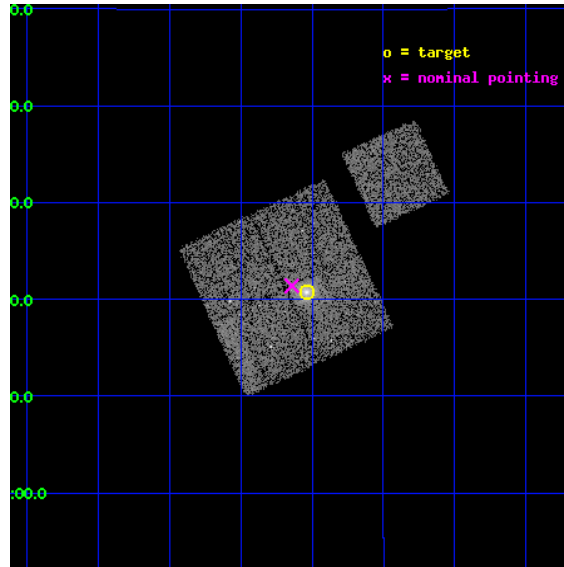
L2 Processing Date : May 4 2012

Contents

1	Front	2
2	OBI	3
2.1	OBI	3
2.1.1	Images	3
2.1.2	Bias	3
2.1.3	Parameters	4
2.1.4	Events	4
2.2	Compared Parameters	5
2.3	Aspect	6
2.4	Star Slots	9
2.4.1	Slot 3	9
2.4.2	Slot 4	10
2.4.3	Slot 5	11
2.4.4	Slot 6	12
2.4.5	Slot 7	13
2.5	FID Slots	14
2.5.1	Slot 0	14
2.5.2	Slot 1	15
2.5.3	Slot 2	16
A	Summary	17
A.1	Status	17
A.2	Comments	17

1 Front

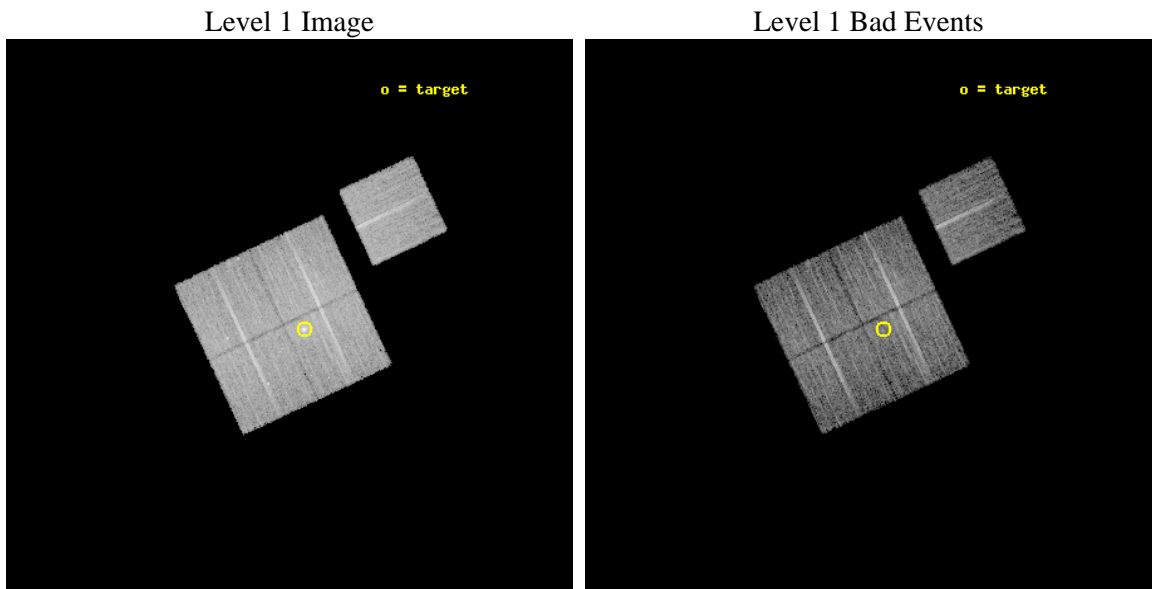
seq_num	800706	Sequence number
obs_id	9761	Observation id
title	Probing Dark Energy with Relaxed Galaxy Clusters	Proposal title
observer	Prof. Steven Allen	Principal investigator
object	RXJ0439-0520	Source name
dtcycle	0	
cycle	P	events from which exps? Prim/Second/Both
ra_targ	69.759583	Observer's specified target RA [deg]
dec_targ	5.345444	Observer's specified target Dec [deg]
ra_nom	69.785297470611	Nominal RA [deg]
dec_nom	5.3566650256707	Nominal Dec [deg]
roll_nom	64.956304373922	Nominal Roll [deg]
revision	2	Processing version of data
ontime	8769.9000674486	Sum of GTIs [s]
liveltime	8655.3148667609	Livetime [s]
ontime0	8766.7590871453	Sum of GTIs [s]
ontime1	8769.9000674486	Sum of GTIs [s]
ontime2	8769.9000674486	Sum of GTIs [s]
ontime3	8769.9000674486	Sum of GTIs [s]
ontime6	8769.9000674486	Sum of GTIs [s]
l2events	35145	Number of level 2 events



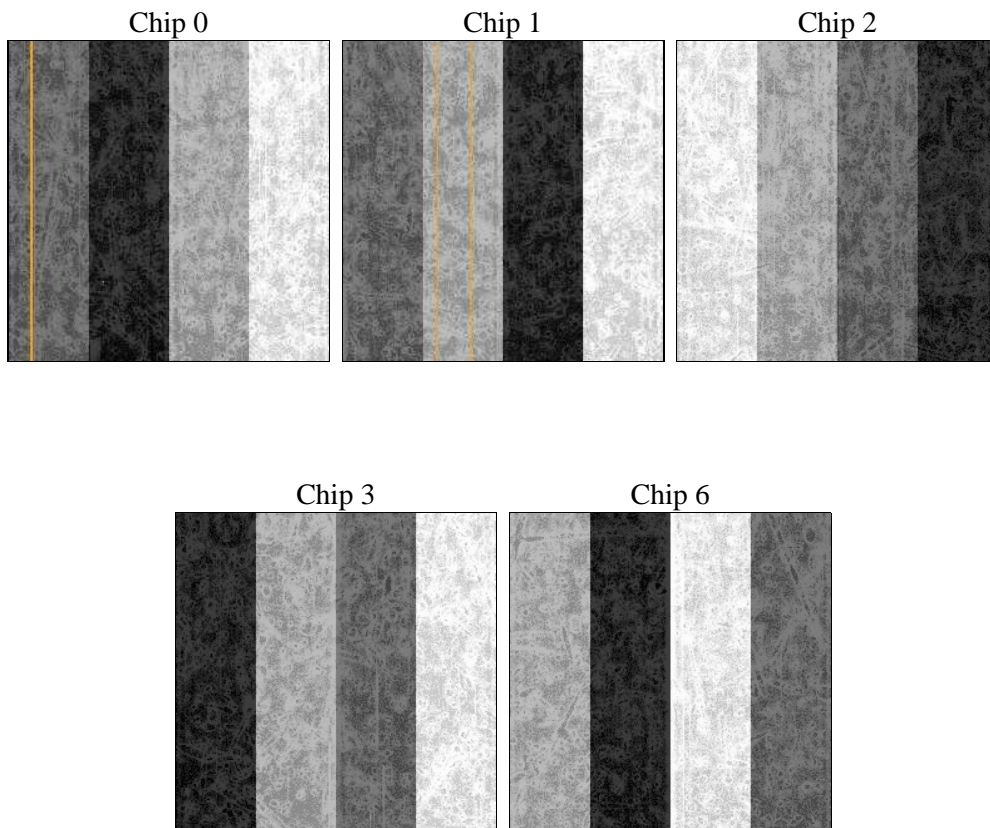
2 OBI

2.1 OBI

2.1.1 Images



2.1.2 Bias



2.1.3 Parameters

obi_num	0	Obi number	sched_exp_time	9000.000000	[s] Scheduled observation exposure time
ascdsver	8.4.4	Processing system revision	ontime	8769.9000674486	Sum of GTIs [s]
caldsver	4.4.9	 	ontime0	8766.7590871453	Sum of GTIs [s]
date	2012-05-04T13:44:13	Date and time of file creation	ontime1	8769.9000674486	Sum of GTIs [s]
revision	2	Processing version of data	ontime2	8769.9000674486	Sum of GTIs [s]
			ontime3	8769.9000674486	Sum of GTIs [s]
			ontime6	8769.9000674486	Sum of GTIs [s]
			l1events	348677	Number of level 1 events

2.1.4 Events

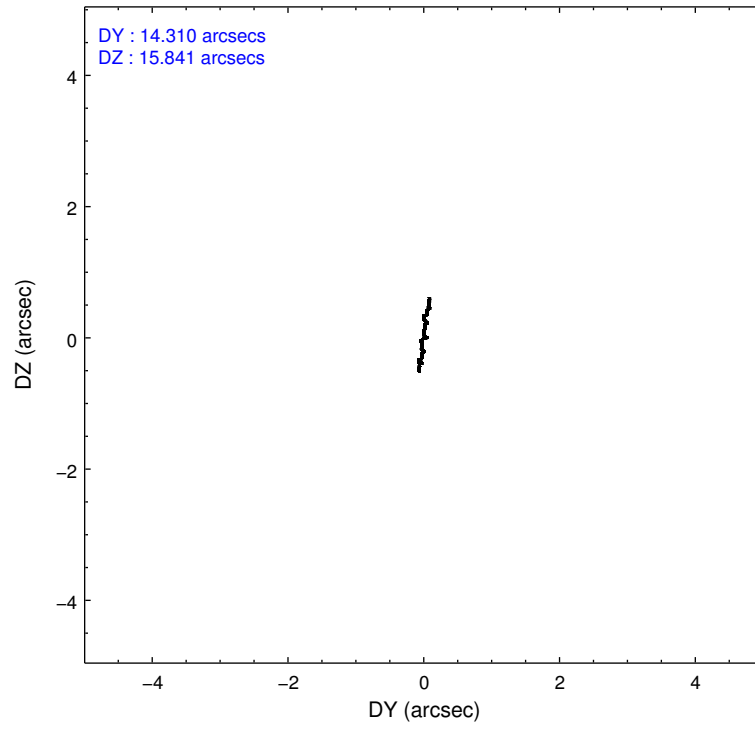
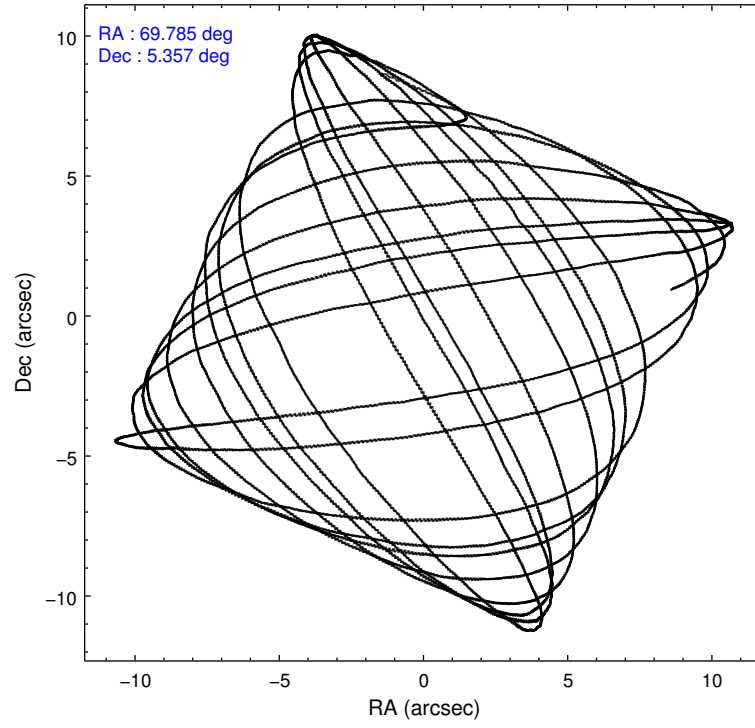
	ccd 0	ccd 1	ccd 2	ccd 3	ccd 6
level 1 events	68332	65556	73947	73795	67047
rejected events	60710	56829	66570	63103	60041
rejected %	88%	86%	90%	85%	89%

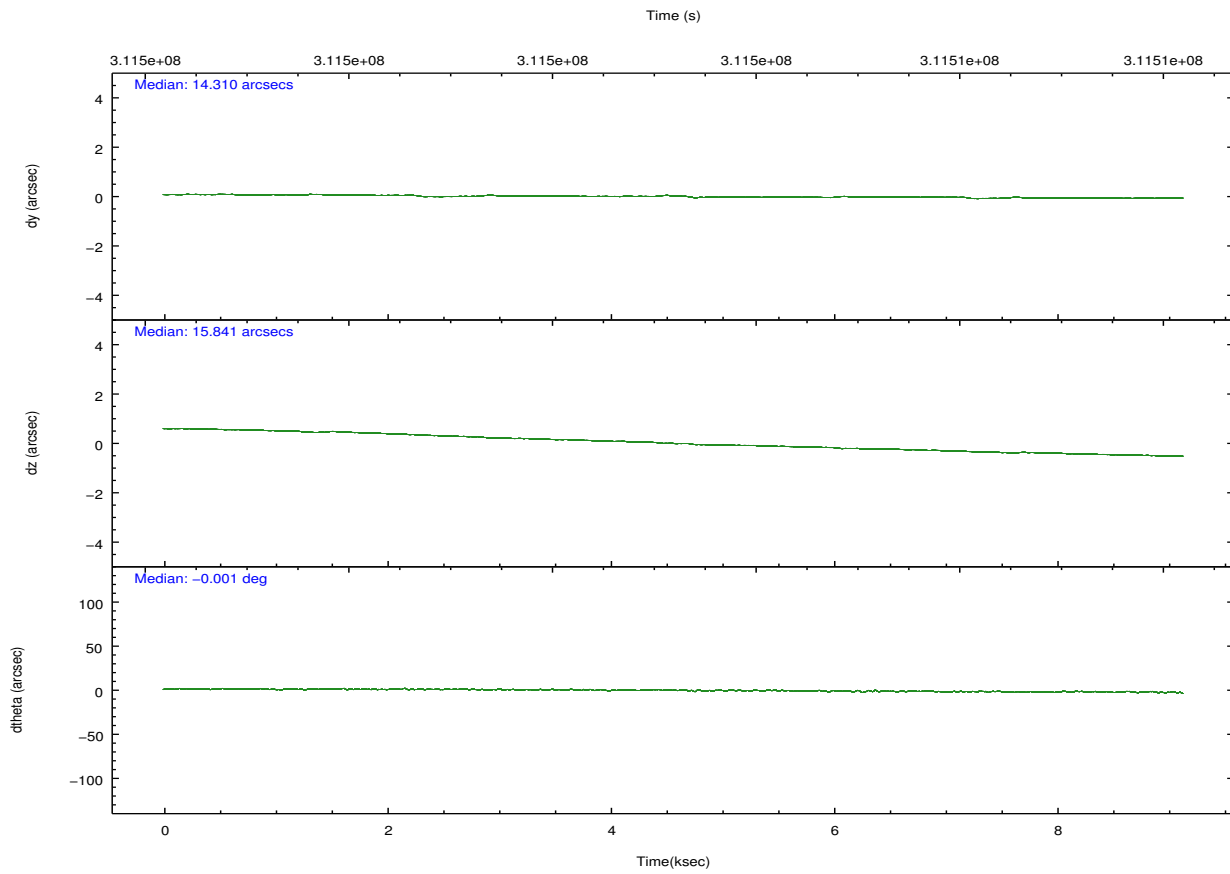
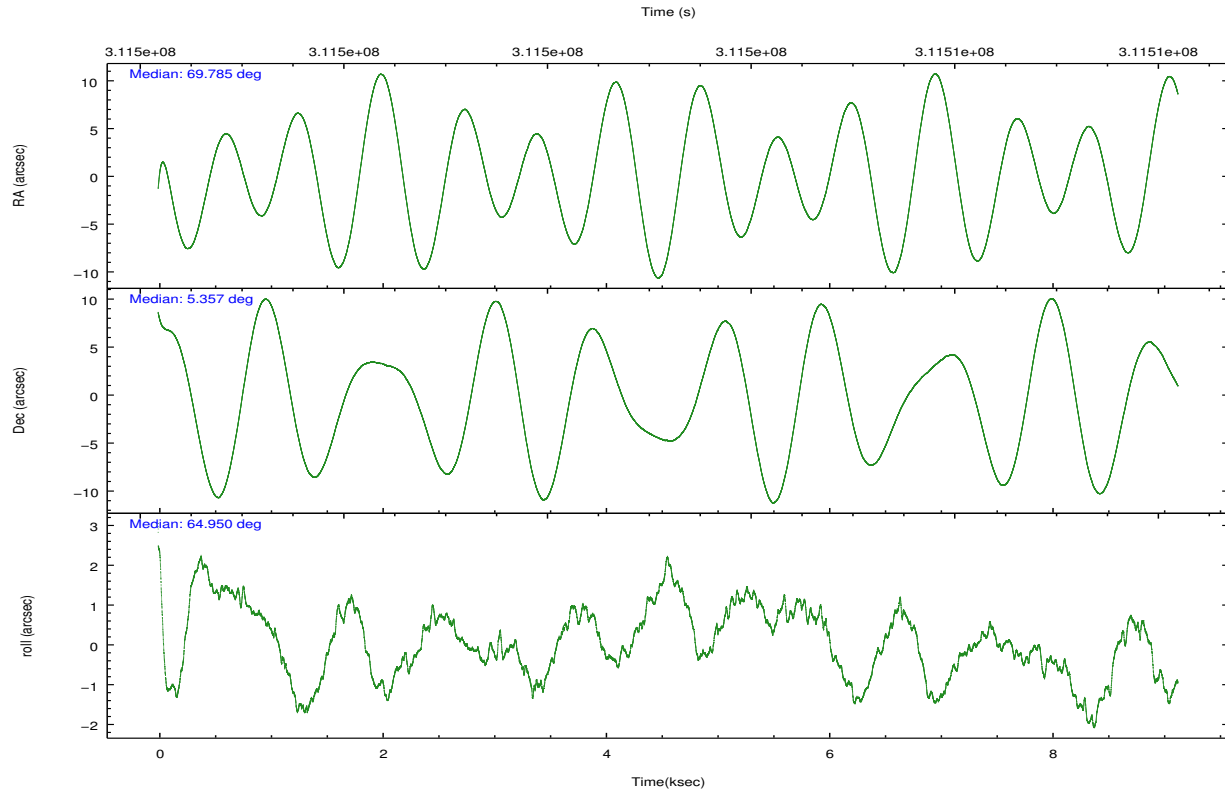
	ccd 0	ccd 1	ccd 2	ccd 3	ccd 6
grade 0 events	2948	3350	2859	5780	2426
	4%	5%	3%	7%	3%
grade 1 events	46	44	54	61	24
	0%	0%	0%	0%	0%
grade 2 events	1691	2006	1685	1841	1548
	2%	3%	2%	2%	2%
grade 3 events	802	892	764	872	771
	1%	1%	1%	1%	1%
grade 4 events	782	840	751	874	772
	1%	1%	1%	1%	1%
grade 5 events	2513	2740	2302	2899	2745
	3%	4%	3%	3%	4%
grade 6 events	1402	1642	1322	1334	1497
	2%	2%	1%	1%	2%
grade 7 events	58148	54042	64210	60134	57264
	85%	82%	86%	81%	85%

2.2 Compared Parameters

Parameter	Planned	Actual	Parameter	Planned	Actual
Instrument	ACIS	ACIS	Obspar format version number	7	7
Detector	ACIS-01236	ACIS-01236	Obspar file type	PREDICTED	ACTUAL
Grating	NONE	NONE	Obspar update status	NONE	UPDATED
Data mode	VFAINT	VFAINT	CCD I0 on	Y	Y
Observation mode	POINTING	POINTING	CCD I1 on	Y	Y
[deg] Pointing RA	69.787805	69.78529747061131	CCD I2 on	Y	Y
[deg] Pointing Dec	5.329241	5.356665025670699	CCD I3 on	Y	Y
[deg] Pointing Roll	64.747374	64.95630437392198	CCD S0 on	N	N
[mm] SIM focus pos	-0.782348	-0.7809083437167272	CCD S1 on	N	N
[mm] SIM defocus	0	0.001439871863259334	CCD S2 on	O1	Y
[mm] SIM translation stage pos	-233.592463	-233.5874344608287	CCD S3 on	N	N
[mm] SIM translation stage offset	0	-0.005018542100998502	CCD S4 on	N	N
[s] Observation start time (MET)	311498742.184000	311497407.2078	CCD S5 on	N	N
Observation start date	2007-11-15T07:24:37	2007-11-15T07:03:27	Number of optional ACIS chips dropped	0	0
[s] Observation end time (MET)	311507742.184000	311508196.35832	On-chip summing requested	N	N
Observation end date	2007-11-15T09:54:37	2007-11-15T10:03:16	Subarray requested	NONE	NONE
Read mode	TIMED	TIMED	Alternating exposures requested	N	N
			[s] Primary exposure time	0.000000	3.1

2.3 Aspect



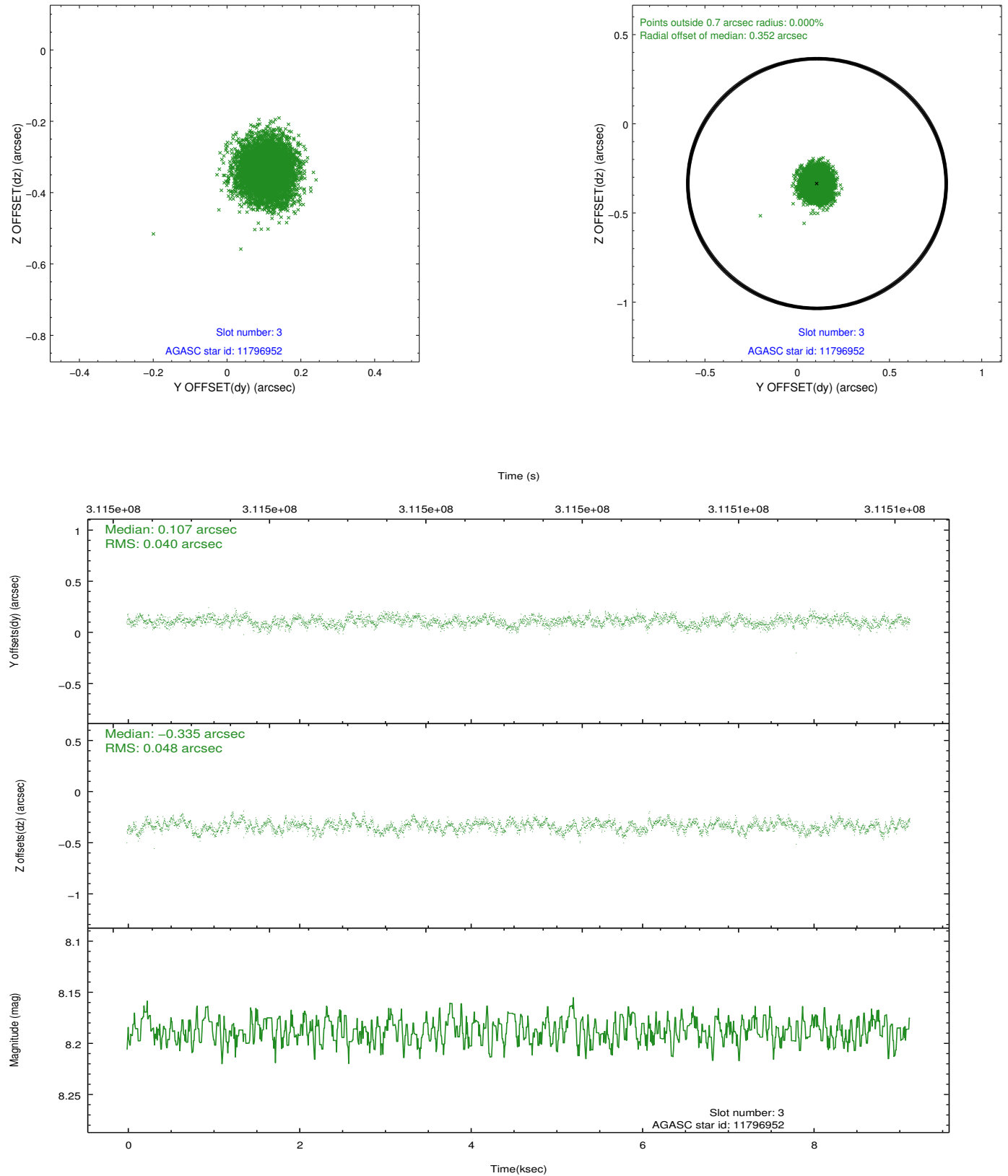


Slot Statistics

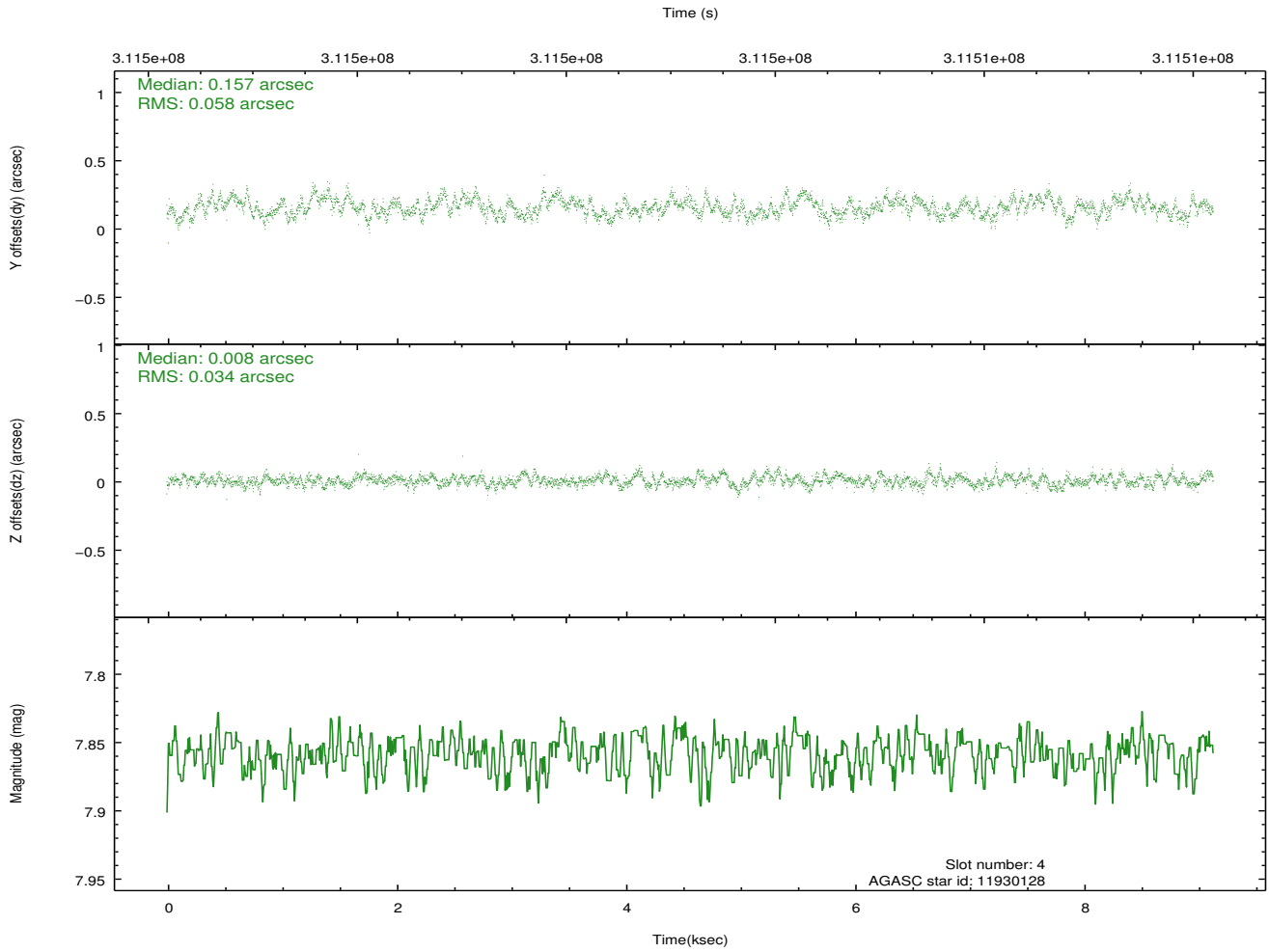
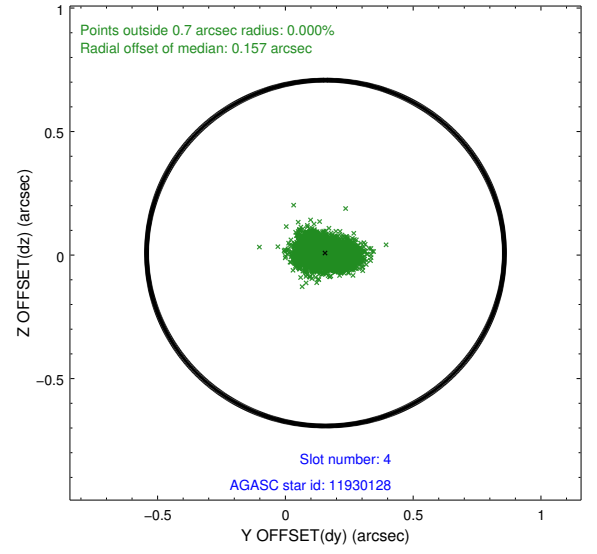
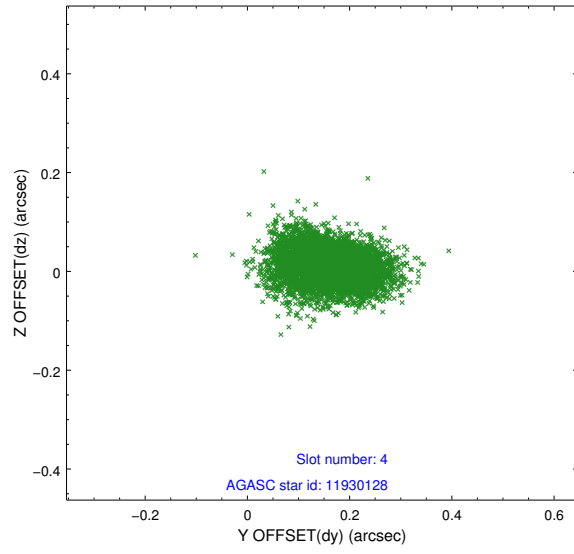
slot	status	id	mag	n_pts	med_dy	med_dz	dr1	dr2	ra	dec	mean_y	mean_z
0	FID	ACIS-I-1	7.23	2228	0.054	-0.039	0.013	0.022	0.000000	0.000000	925.21	-839.54
1	FID	ACIS-I-5	7.22	2228	-0.215	0.052	0.011	0.016	0.000000	0.000000	-1822.81	1057.78
2	FID	ACIS-I-6	7.23	2228	0.070	0.055	0.011	0.017	0.000000	0.000000	390.16	1702.92
3	GUIDE	11796952	8.19	4455	0.107	-0.335	0.067	0.106	69.202168	5.375398	-744.36	1969.32
4	GUIDE	11930128	7.86	4457	0.157	0.008	0.072	0.118	69.405504	4.982791	-1712.80	708.67
5	GUIDE	11931216	8.17	4454	-0.055	0.201	0.069	0.108	69.809895	4.744134	-1871.56	-970.17
6	GUIDE	11934192	9.25	4456	-0.024	0.128	0.096	0.159	70.490469	5.609501	1987.70	-1845.78
7	GUIDE	12461880	8.86	4451	-0.186	-0.002	0.099	0.151	69.474578	5.770319	957.92	1691.93

2.4 Star Slots

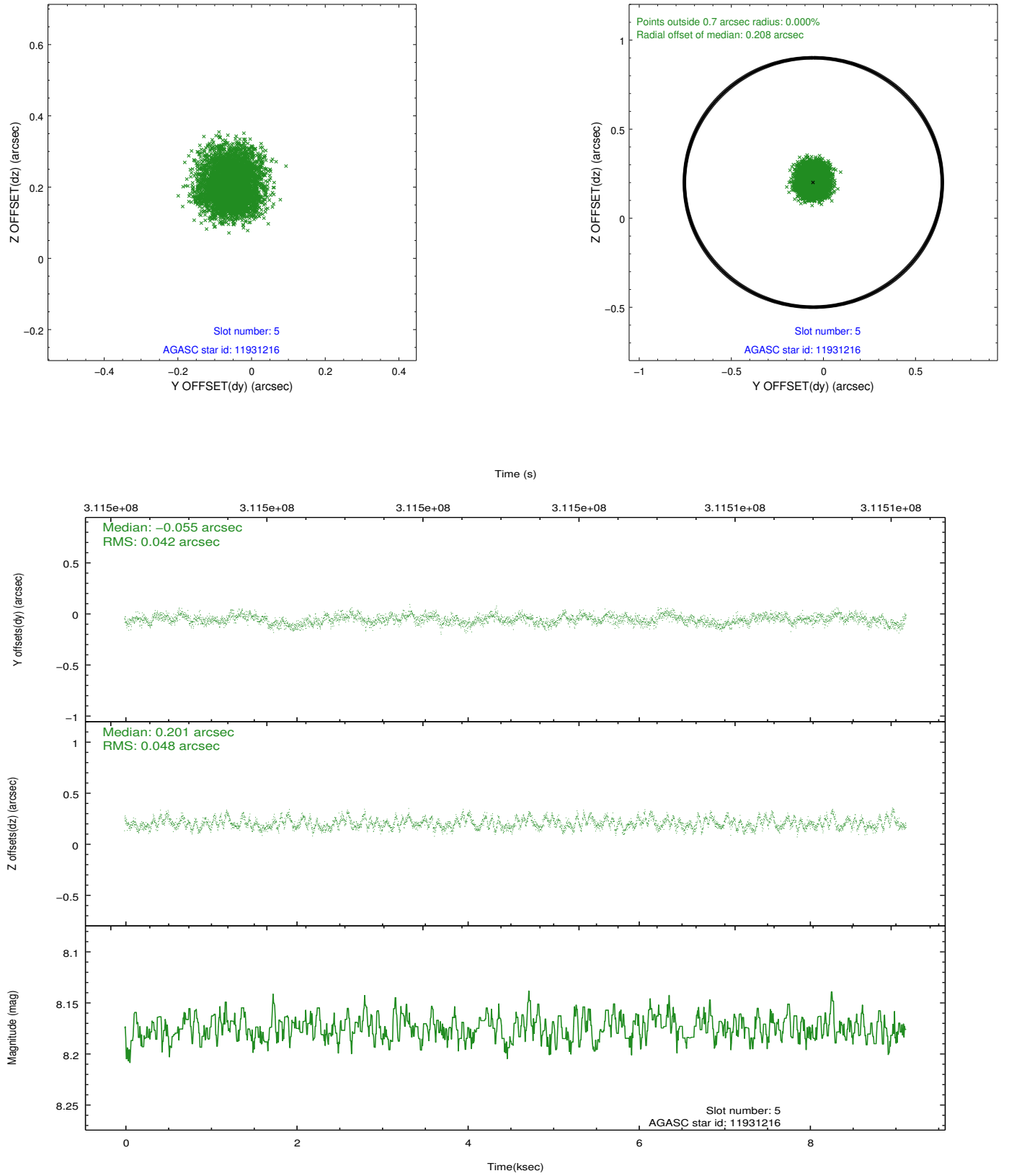
2.4.1 Slot 3



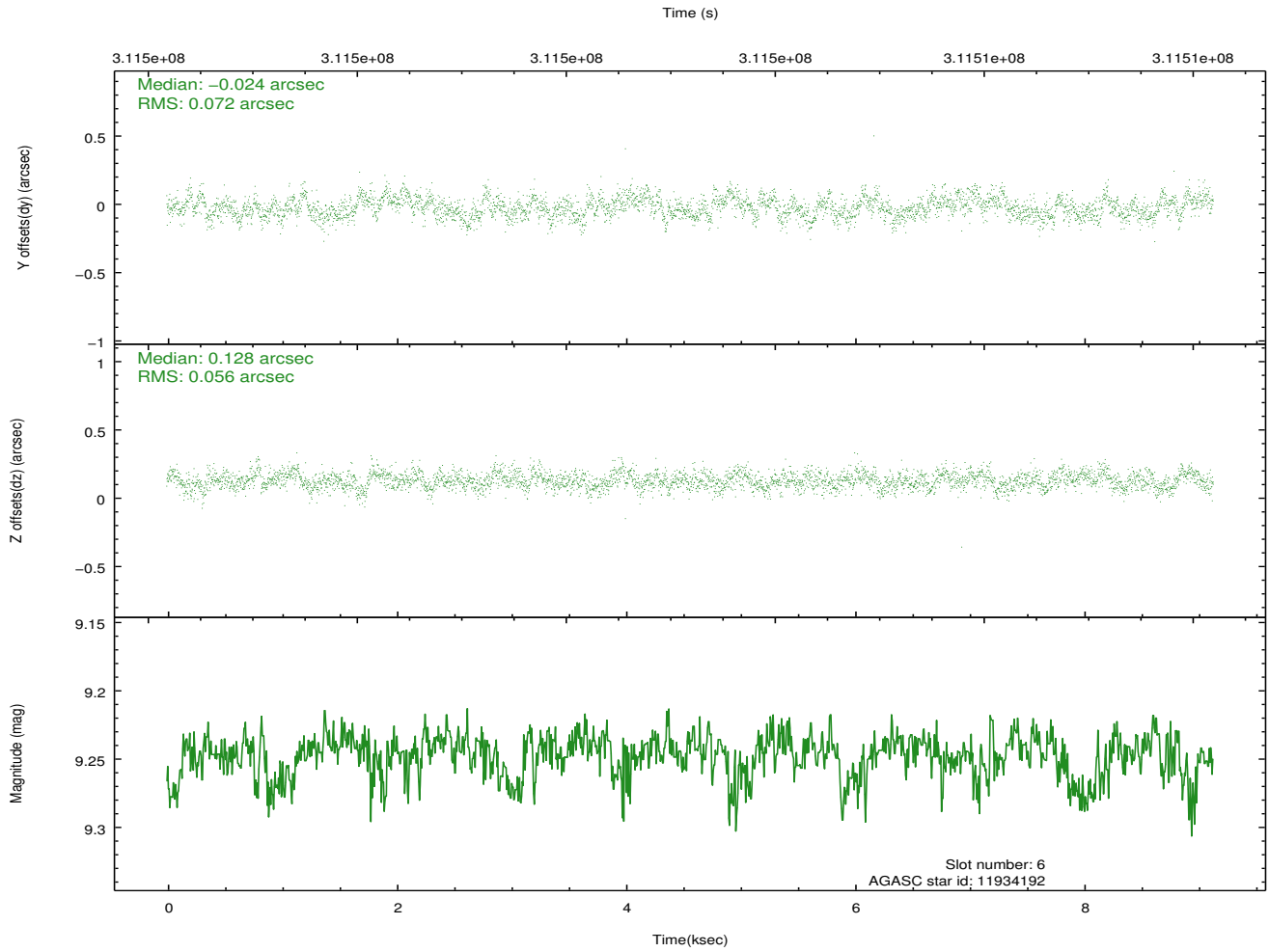
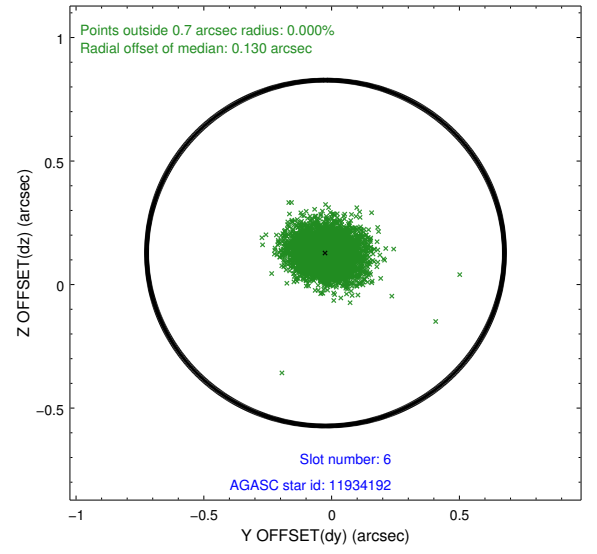
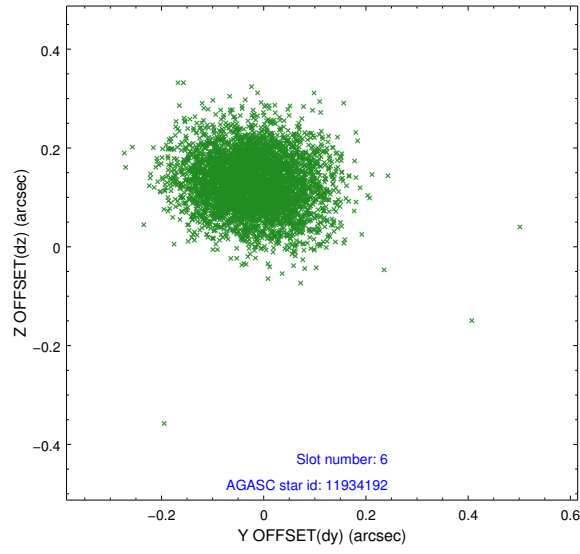
2.4.2 Slot 4



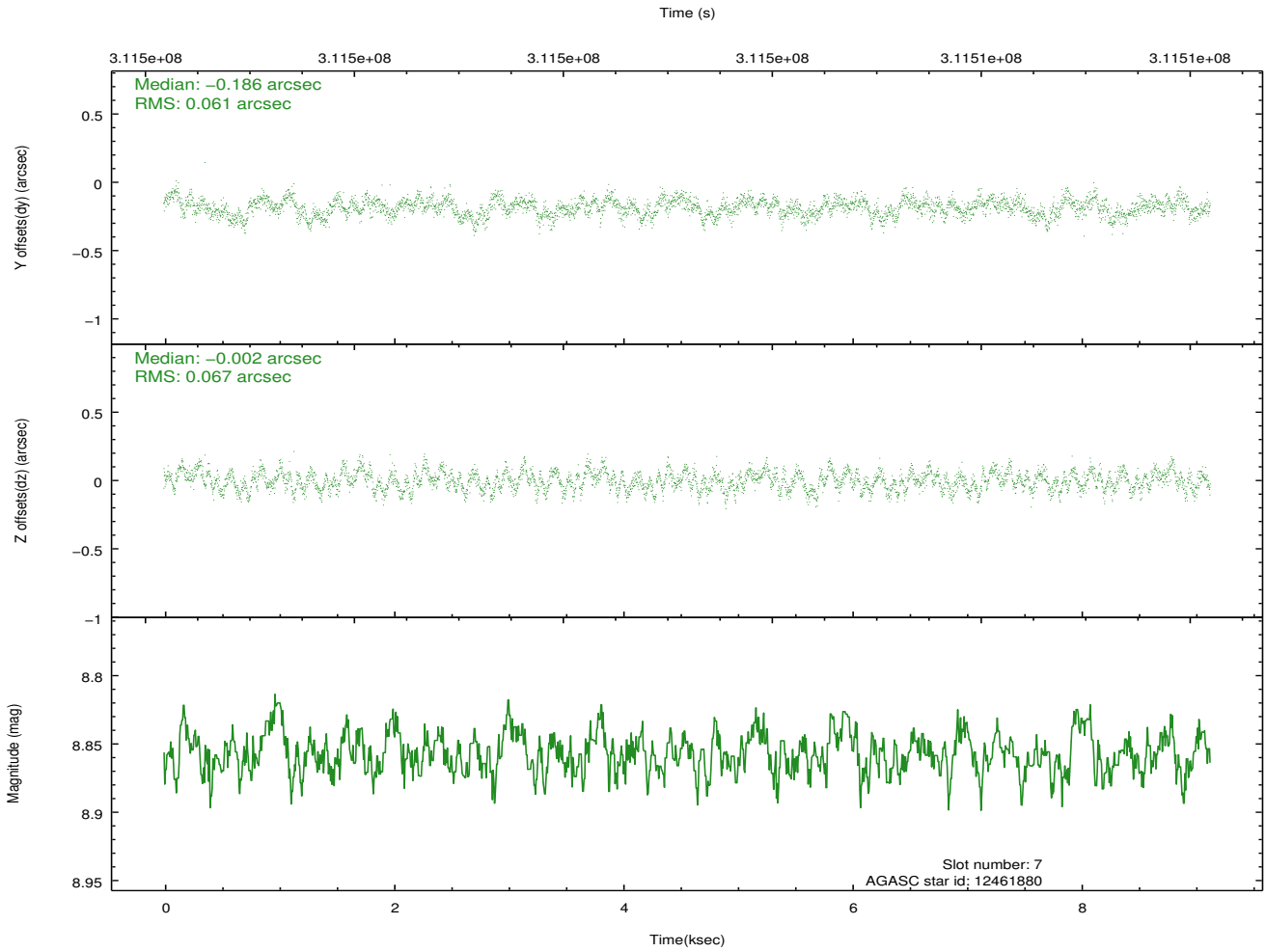
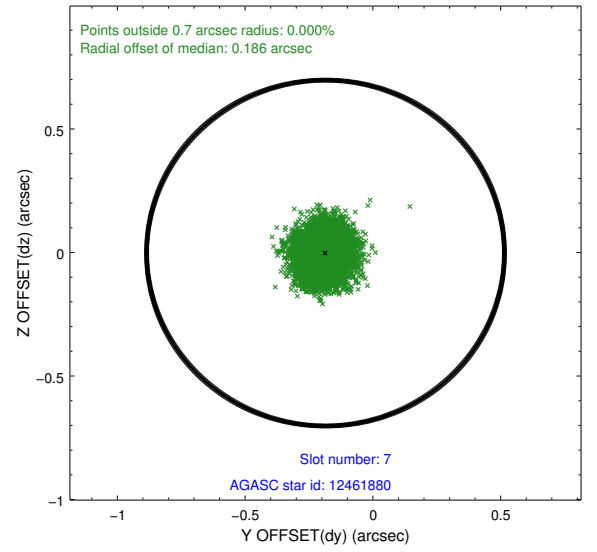
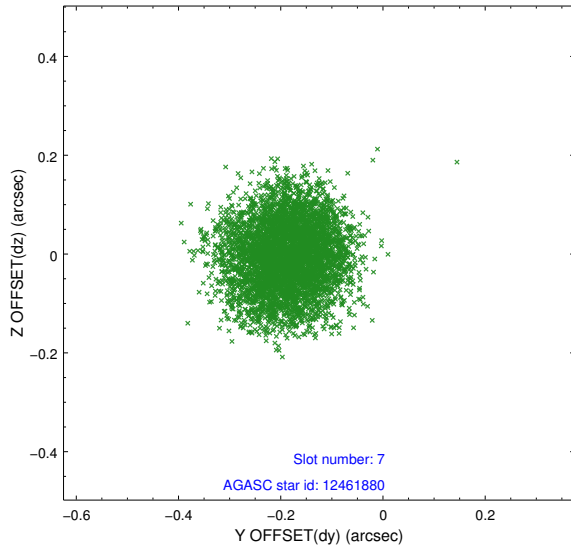
2.4.3 Slot 5



2.4.4 Slot 6

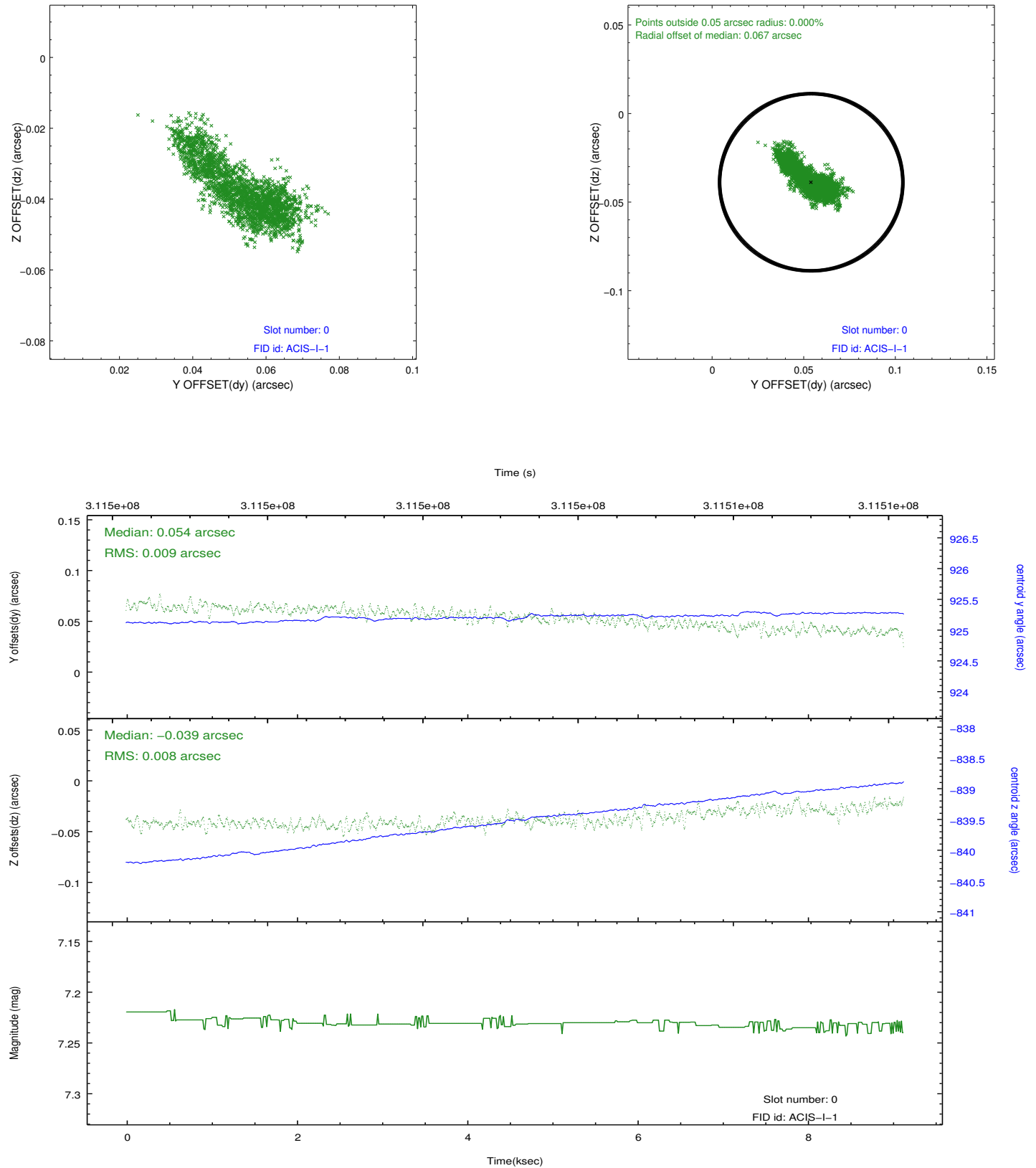


2.4.5 Slot 7

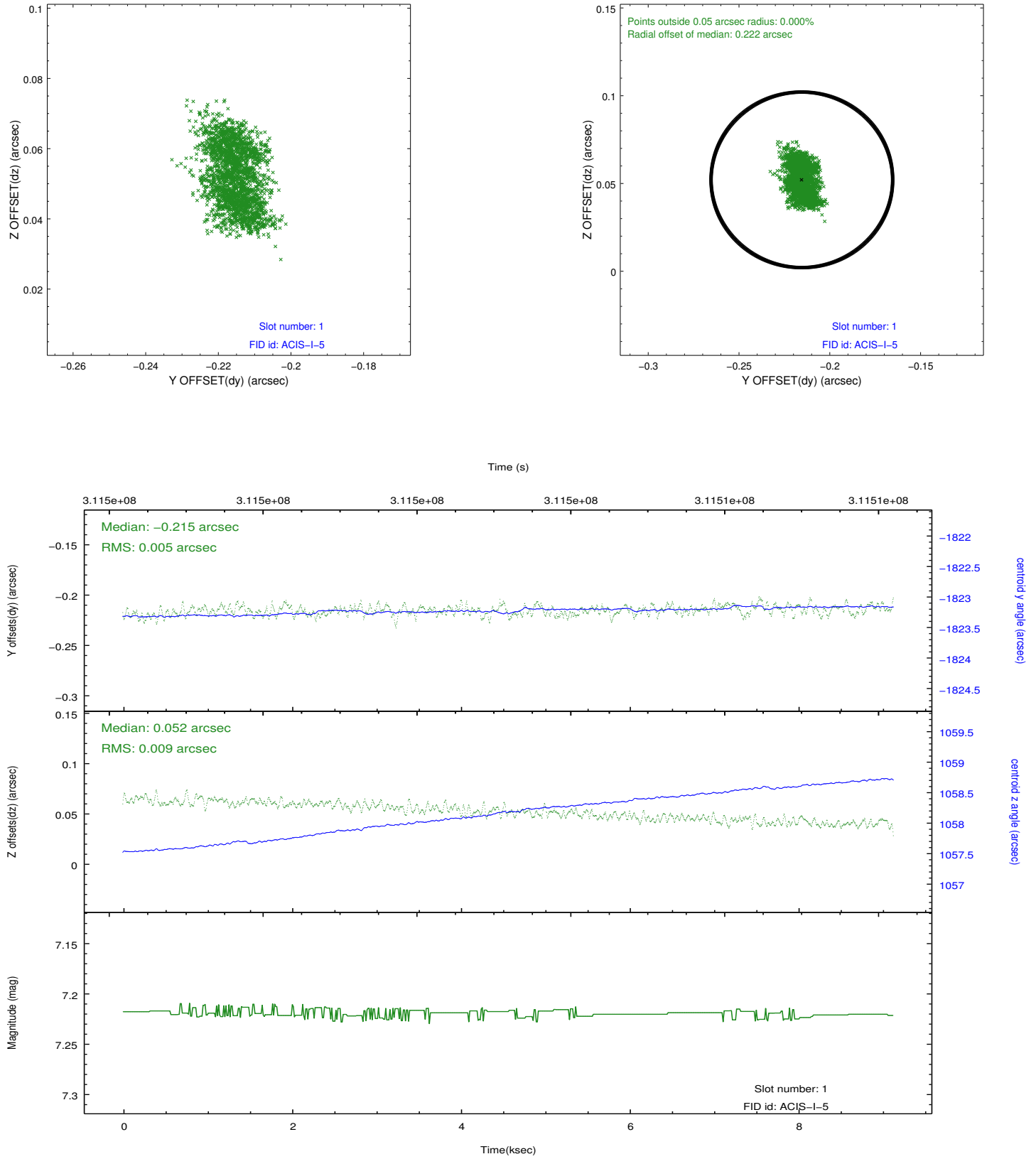


2.5 FID Slots

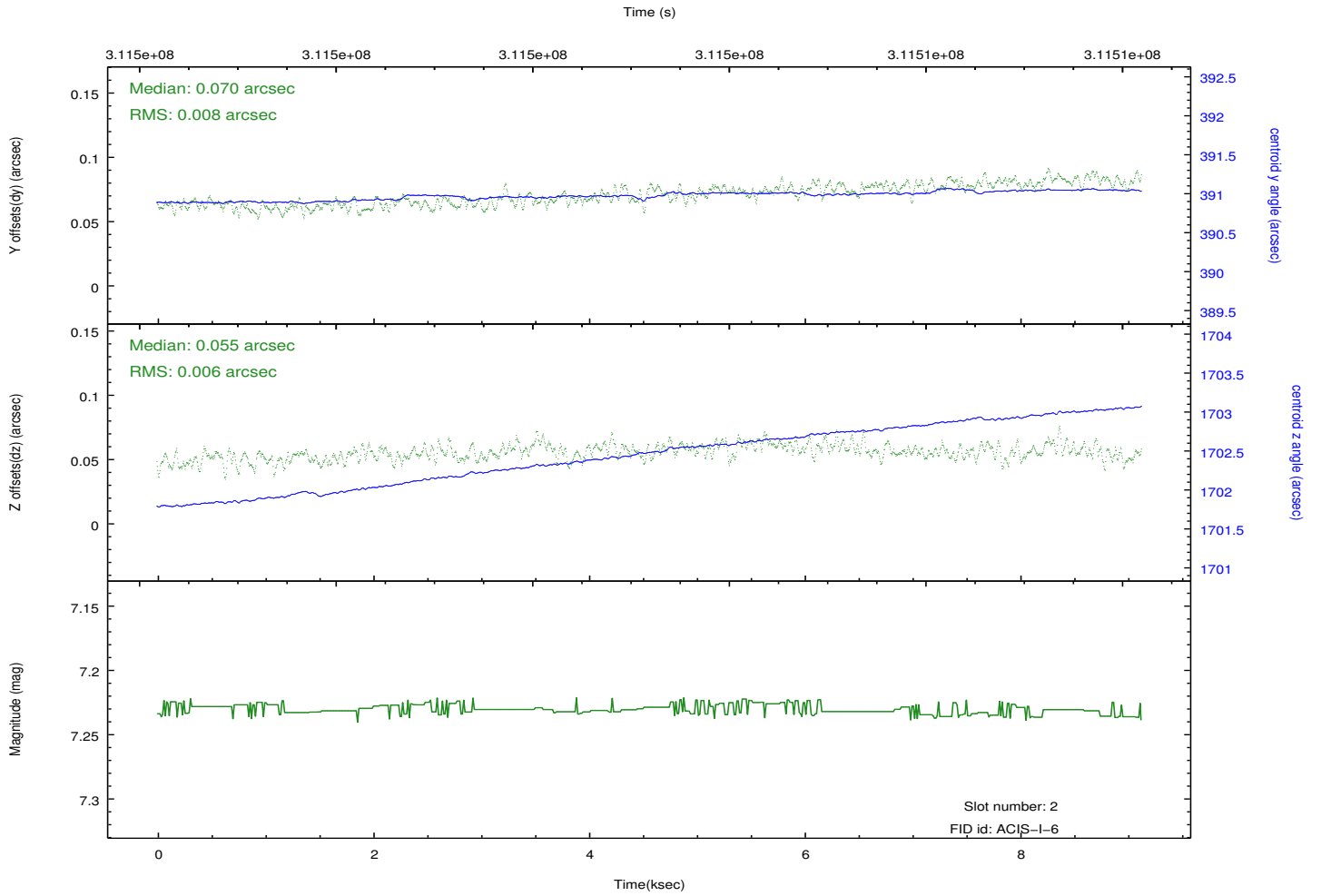
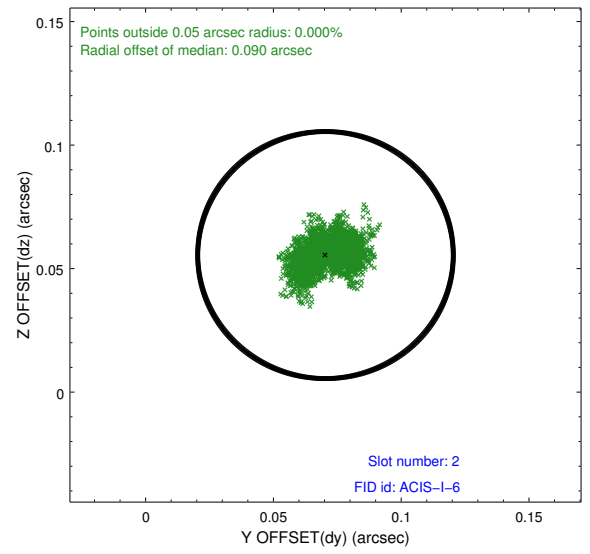
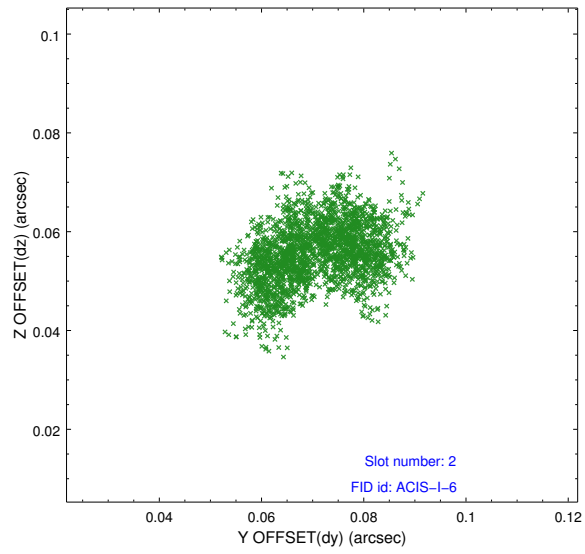
2.5.1 Slot 0



2.5.2 Slot 1



2.5.3 Slot 2



A Summary

A.1 Status

V&V Scientist	Jen Lauer
V&V Date (YYYY-MM-DD)	2012.05.07
V&V Edition	1
V&V Disposition and Status	OK
V&V Charge Time	8.76990006

A.2 Comments