

V&V Reference Report

L2 ASCDS Version : 8.4.4

Observation 9387 - L2 Version 3
Chandra X-Ray Center

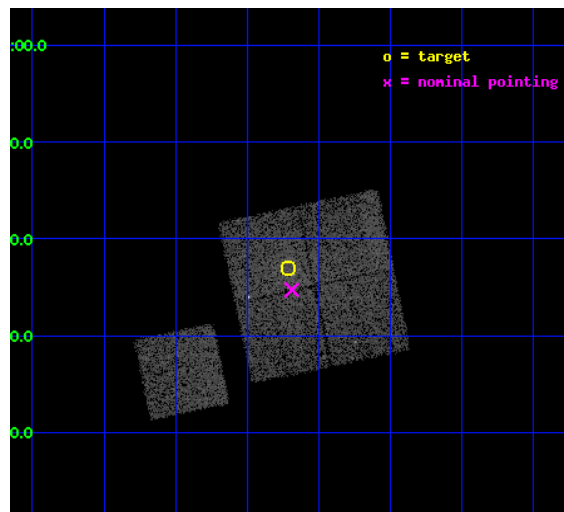
L2 Processing Date : May 11 2012

Contents

1	Front	2
2	OBI	3
2.1	OBI	3
2.1.1	Images	3
2.1.2	Bias	3
2.1.3	Parameters	4
2.1.4	Events	4
2.2	Compared Parameters	5
2.3	Aspect	6
2.4	Star Slots	9
2.4.1	Slot 3	9
2.4.2	Slot 4	10
2.4.3	Slot 5	11
2.4.4	Slot 6	12
2.4.5	Slot 7	13
2.5	FID Slots	14
2.5.1	Slot 0	14
2.5.2	Slot 1	15
2.5.3	Slot 2	16
A	Summary	17
A.1	Status	17
A.2	Comments	17

1 Front

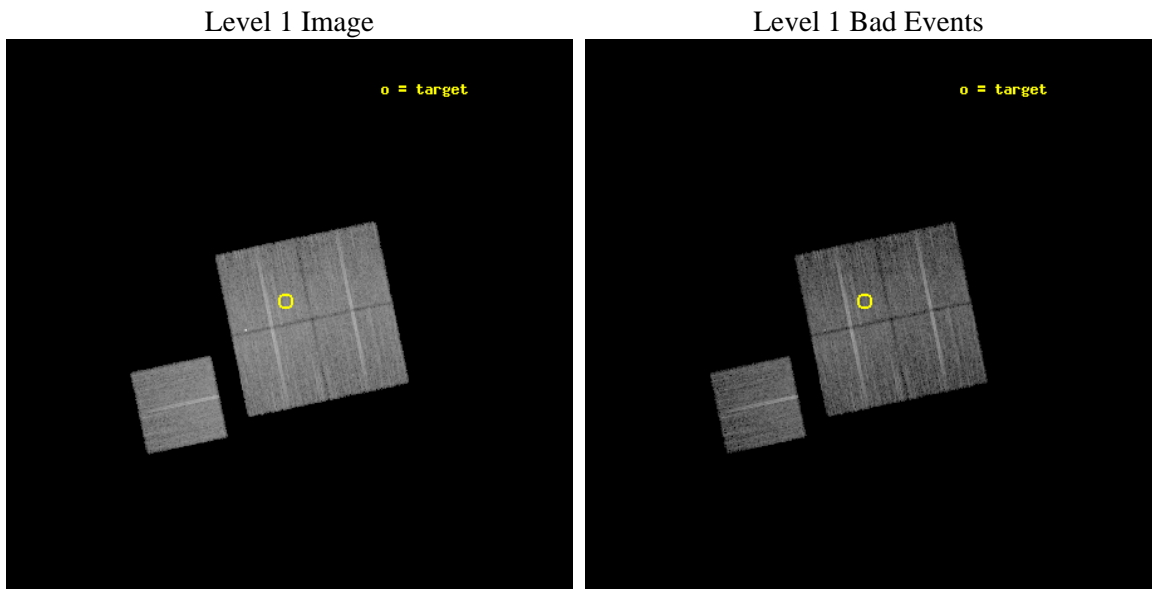
seq_num	800724	Sequence number
obs_id	9387	Observation id
title	SCALING RELATIONS FOR LOW-MASS GALAXY CLUSTERS AND GROUPS	Proposal
observer	Dr. Alexey Vikhlinin	Principal investigator
object	cl1058+0136	Source name
dtcycle	0	
cycle	P	events from which exps? Prim/Second/Both
ra_targ	164.5525	Observer's specified target RA [deg]
dec_targ	1.616111	Observer's specified target Dec [deg]
ra_nom	164.54707425455	Nominal RA [deg]
dec_nom	1.5787233326391	Nominal Dec [deg]
roll_nom	258.18879250044	Nominal Roll [deg]
revision	3	Processing version of data
ontime	10183.459088087	Sum of GTIs [s]
livetime	10050.404698148	Livetime [s]
ontime0	10183.459078074	Sum of GTIs [s]
ontime1	10183.459098041	Sum of GTIs [s]
ontime2	10186.600078344	Sum of GTIs [s]
ontime3	10183.459088087	Sum of GTIs [s]
ontime6	10186.600078344	Sum of GTIs [s]
l2events	38350	Number of level 2 events



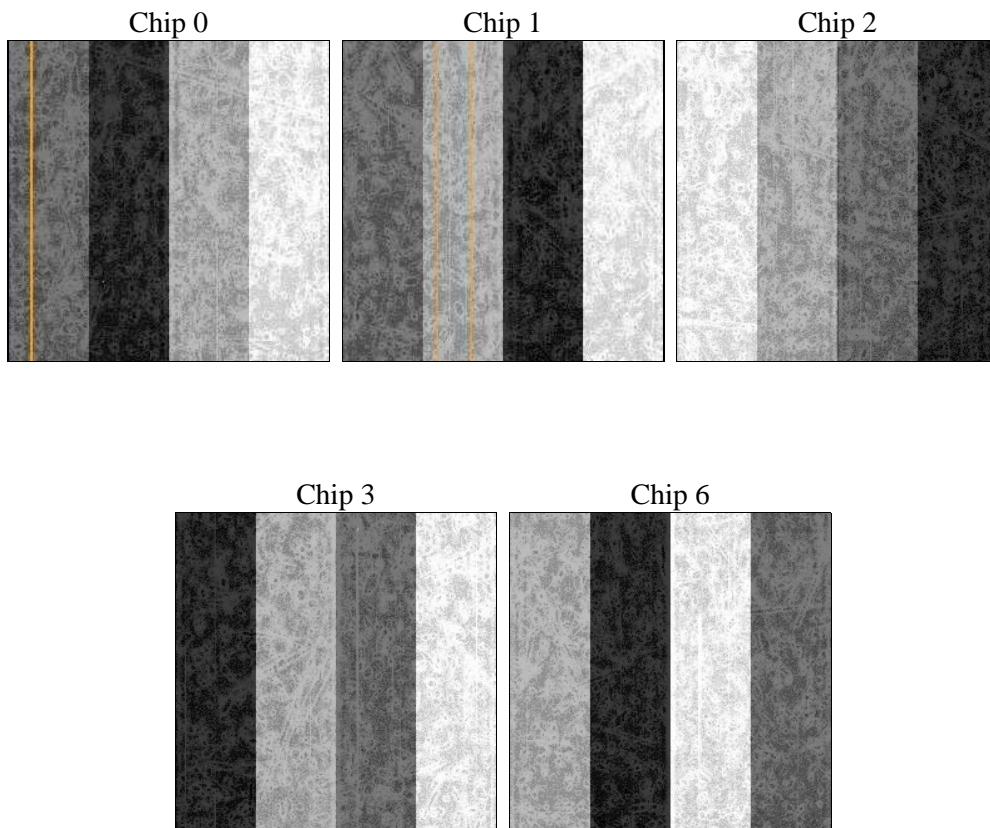
2 OBI

2.1 OBI

2.1.1 Images



2.1.2 Bias



2.1.3 Parameters

obi_num	0	Obi number	sched_exp_time	10000.000000	[s] Scheduled observation exposure time
ascdsver	8.4.4	Processing system revision	ontime	10183.459088087	Sum of GTIs [s]
caldsver	4.4.9	 	ontime0	10183.459078074	Sum of GTIs [s]
date	2012-05-12T01:44:12	Date and time of file creation	ontime1	10183.459098041	Sum of GTIs [s]
revision	3	Processing version of data	ontime2	10186.600078344	Sum of GTIs [s]
			ontime3	10183.459088087	Sum of GTIs [s]
			ontime6	10186.600078344	Sum of GTIs [s]
			l1events	400895	Number of level 1 events

2.1.4 Events

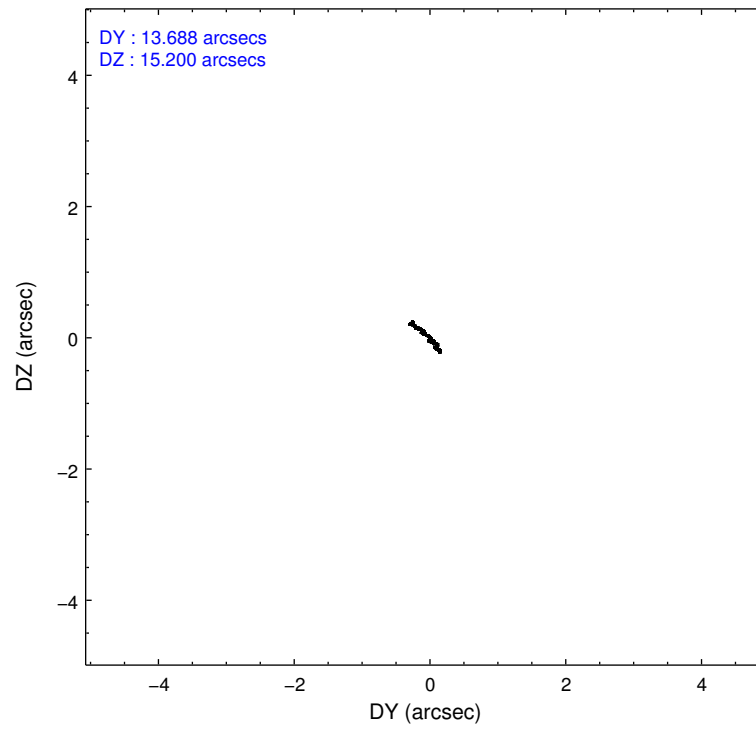
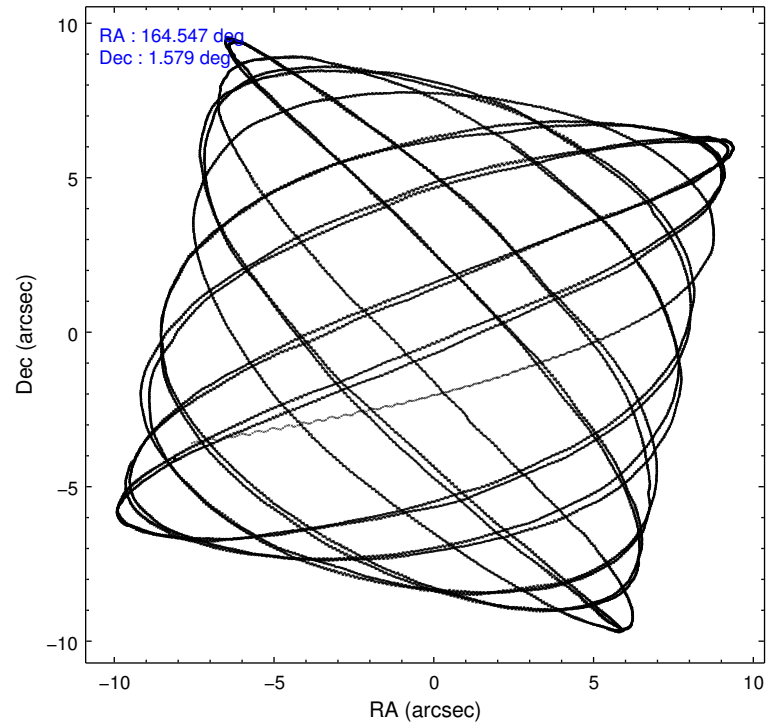
	ccd 0	ccd 1	ccd 2	ccd 3	ccd 6
level 1 events	75172	74171	88193	83940	79419
rejected events	66840	64681	79902	72909	70966
rejected %	88%	87%	90%	86%	89%

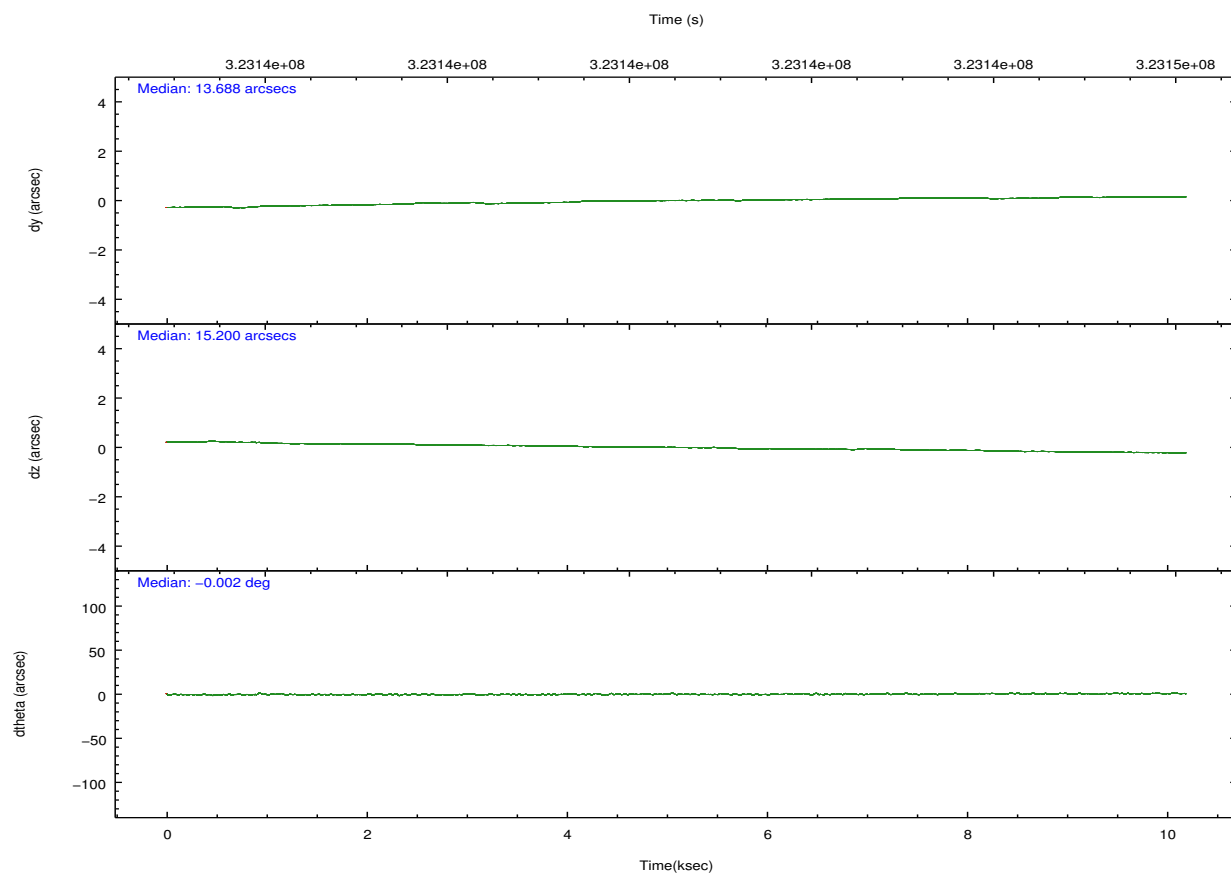
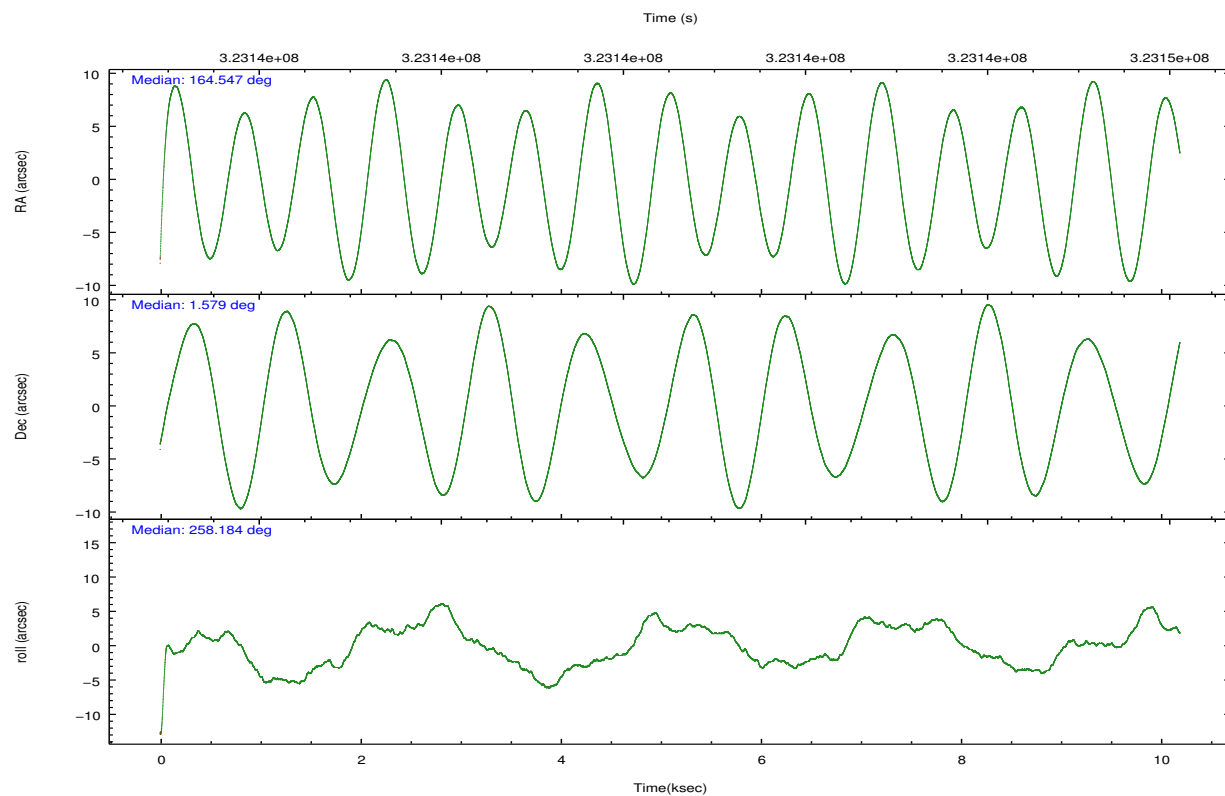
	ccd 0	ccd 1	ccd 2	ccd 3	ccd 6
grade 0 events	3025	3622	3108	5527	2914
	4%	4%	3%	6%	3%
grade 1 events	43	54	45	100	46
	0%	0%	0%	0%	0%
grade 2 events	1986	2089	2042	1967	1894
	2%	2%	2%	2%	2%
grade 3 events	909	992	816	971	959
	1%	1%	0%	1%	1%
grade 4 events	858	980	841	1004	946
	1%	1%	0%	1%	1%
grade 5 events	2965	3239	2833	3423	3257
	3%	4%	3%	4%	4%
grade 6 events	1584	1847	1519	1606	1762
	2%	2%	1%	1%	2%
grade 7 events	63802	61348	76989	69342	67641
	84%	82%	87%	82%	85%

2.2 Compared Parameters

Parameter	Planned	Actual	Parameter	Planned	Actual
Instrument	ACIS	ACIS	Obspar format version number	7	7
Detector	ACIS-01236	ACIS-01236	Obspar file type	PREDICTED	ACTUAL
Grating	NONE	NONE	Obspar update status	NONE	UPDATED
Data mode	VFAINT	VFAINT	CCD I0 on	Y	Y
Observation mode	POINTING	POINTING	CCD I1 on	Y	Y
[deg] Pointing RA	164.538327	164.5470742545476	CCD I2 on	Y	Y
[deg] Pointing Dec	1.604809	1.578723332639052	CCD I3 on	Y	Y
[deg] Pointing Roll	257.980372	258.1887925004365	CCD S0 on	N	N
[mm] SIM focus pos	-0.782348	-0.7809083437167272	CCD S1 on	N	N
[mm] SIM defocus	0	0.001439871863259334	CCD S2 on	O1	Y
[mm] SIM translation stage pos	-228.592463	-228.6015472178352	CCD S3 on	N	N
[mm] SIM translation stage offset	-5	-4.990905785094469	CCD S4 on	N	N
[s] Observation start time (MET)	323135607.184000	323134592.03437	CCD S5 on	N	N
Observation start date	2008-03-28T23:52:22	2008-03-28T23:36:32	Number of optional ACIS chips dropped	0	0
[s] Observation end time (MET)	323145607.184000	323146456.92244	On-chip summing requested	N	N
Observation end date	2008-03-29T02:39:02	2008-03-29T02:54:16	Subarray requested	NONE	NONE
Read mode	TIMED	TIMED	Alternating exposures requested	N	N
			[s] Primary exposure time	0.000000	3.1

2.3 Aspect



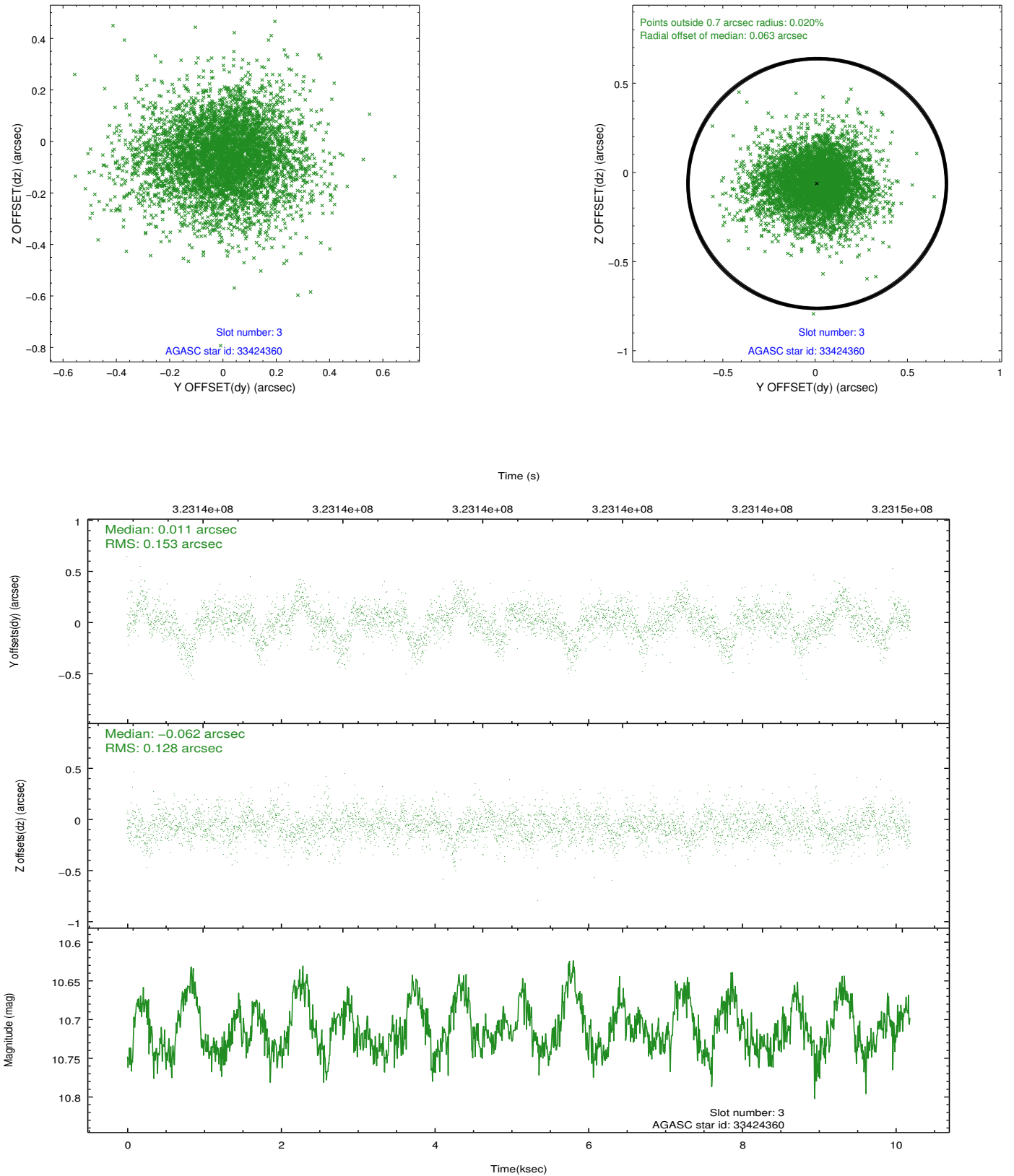


Slot Statistics

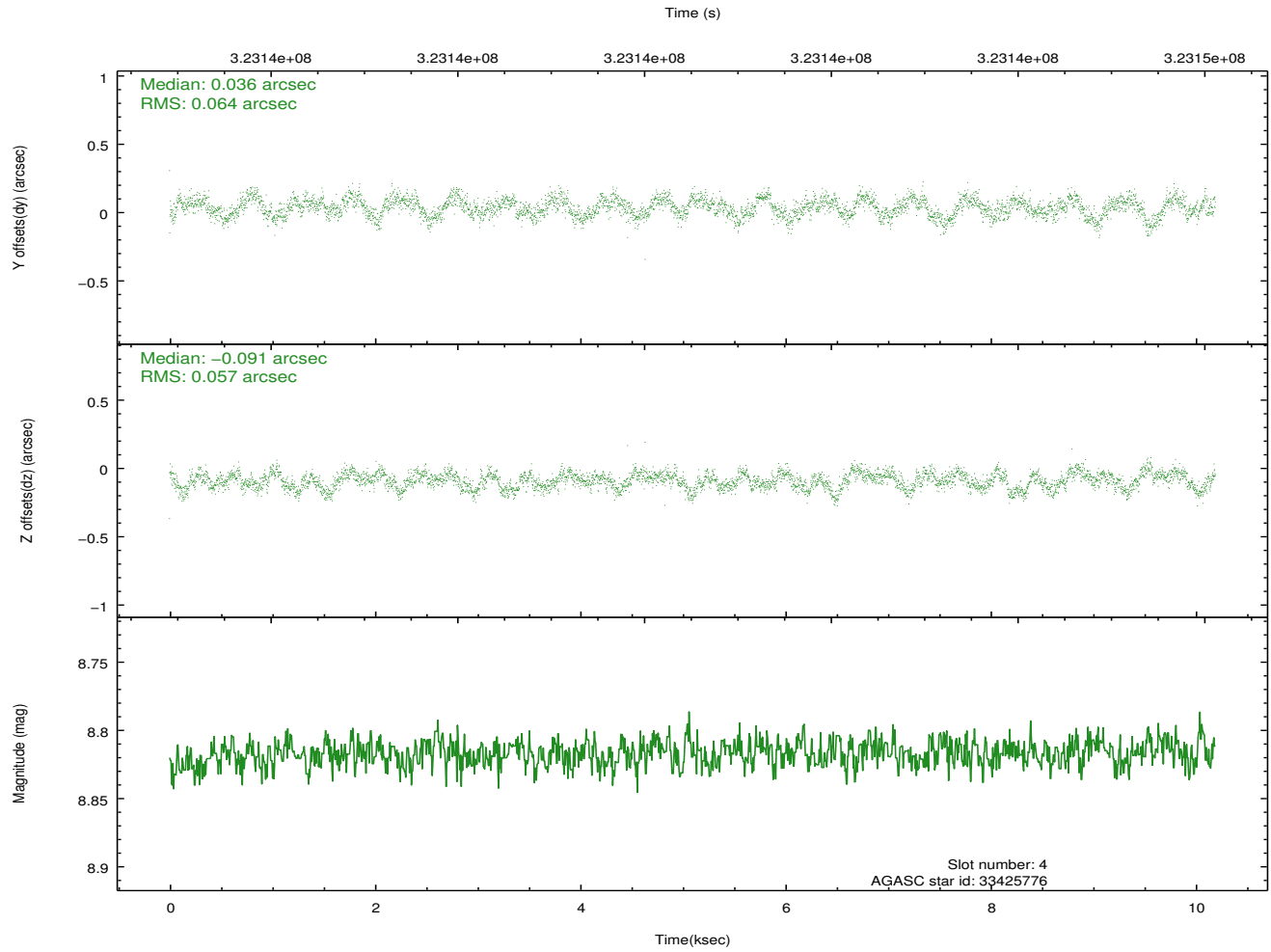
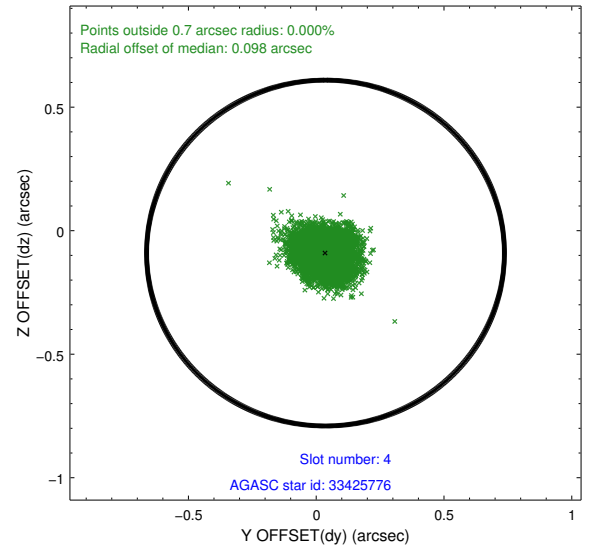
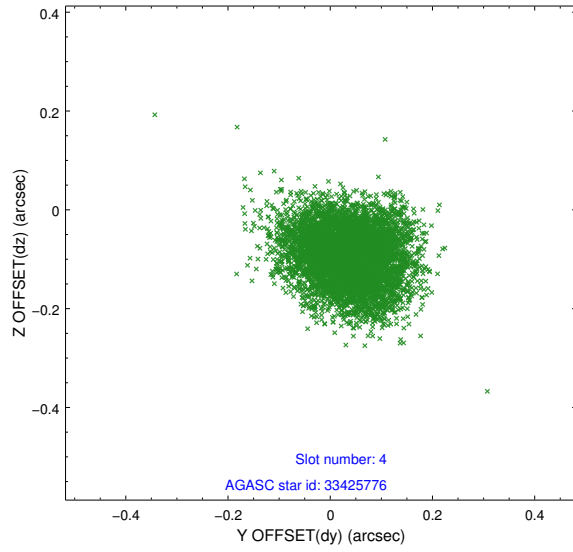
slot	status	id	mag	n_pts	med_dy	med_dz	dr1	dr2	ra	dec	mean_y	mean_z
0	FID	ACIS-I-1	7.23	2486	0.088	-0.021	0.009	0.016	0.000000	0.000000	925.84	-941.24
1	FID	ACIS-I-5	7.22	2486	-0.260	0.083	0.009	0.015	0.000000	0.000000	-1822.34	956.04
2	FID	ACIS-I-6	7.23	2485	0.080	0.009	0.006	0.010	0.000000	0.000000	390.80	1601.07
3	GUIDE	33424360	10.71	4951	0.011	-0.062	0.207	0.358	164.039494	2.347270	-2240.29	-2311.91
4	GUIDE	33425776	8.82	4968	0.036	-0.091	0.092	0.142	164.749355	2.195075	-2236.30	299.50
5	GUIDE	33429488	9.50	4918	0.128	-0.118	0.093	0.150	164.948285	1.078555	1545.61	1837.67
6	GUIDE	33430928	7.83	4972	0.078	-0.206	0.069	0.109	164.698903	1.729219	-557.17	471.87
7	GUIDE	33431256	9.35	4965	-0.240	0.478	0.130	0.210	164.194963	1.515001	573.74	-1140.82

2.4 Star Slots

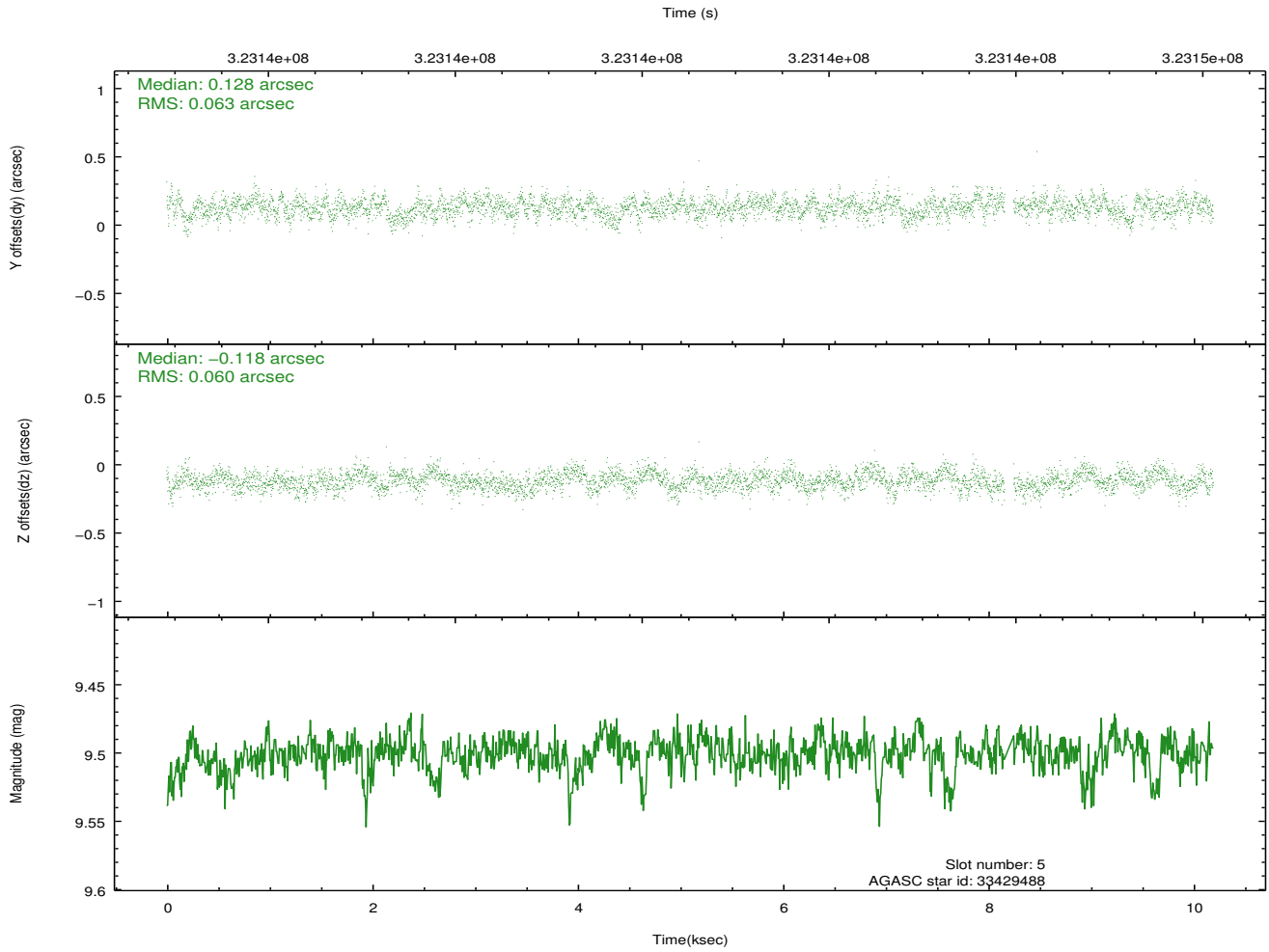
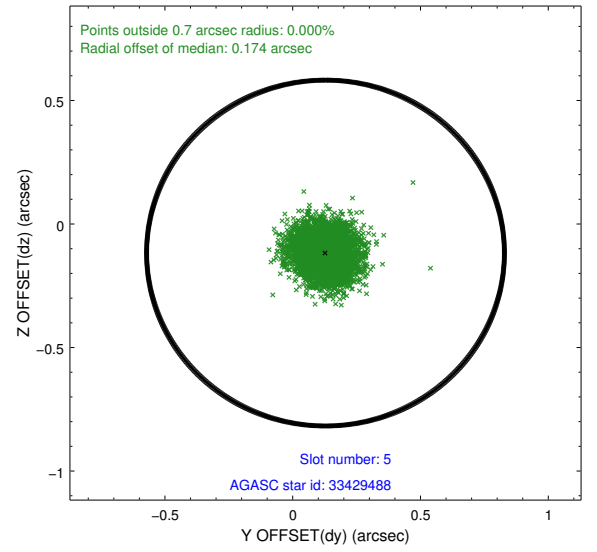
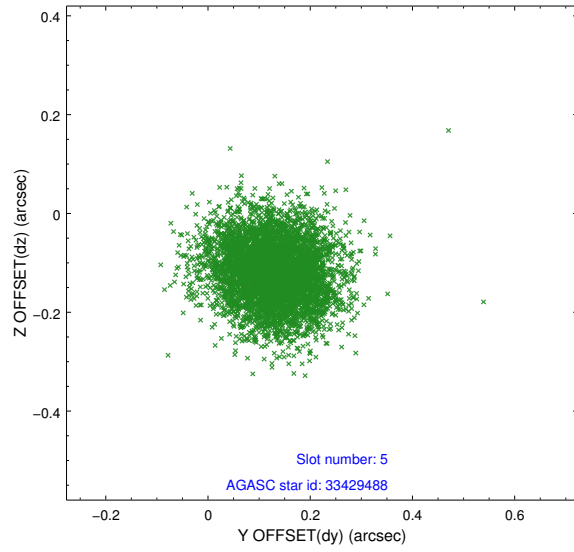
2.4.1 Slot 3



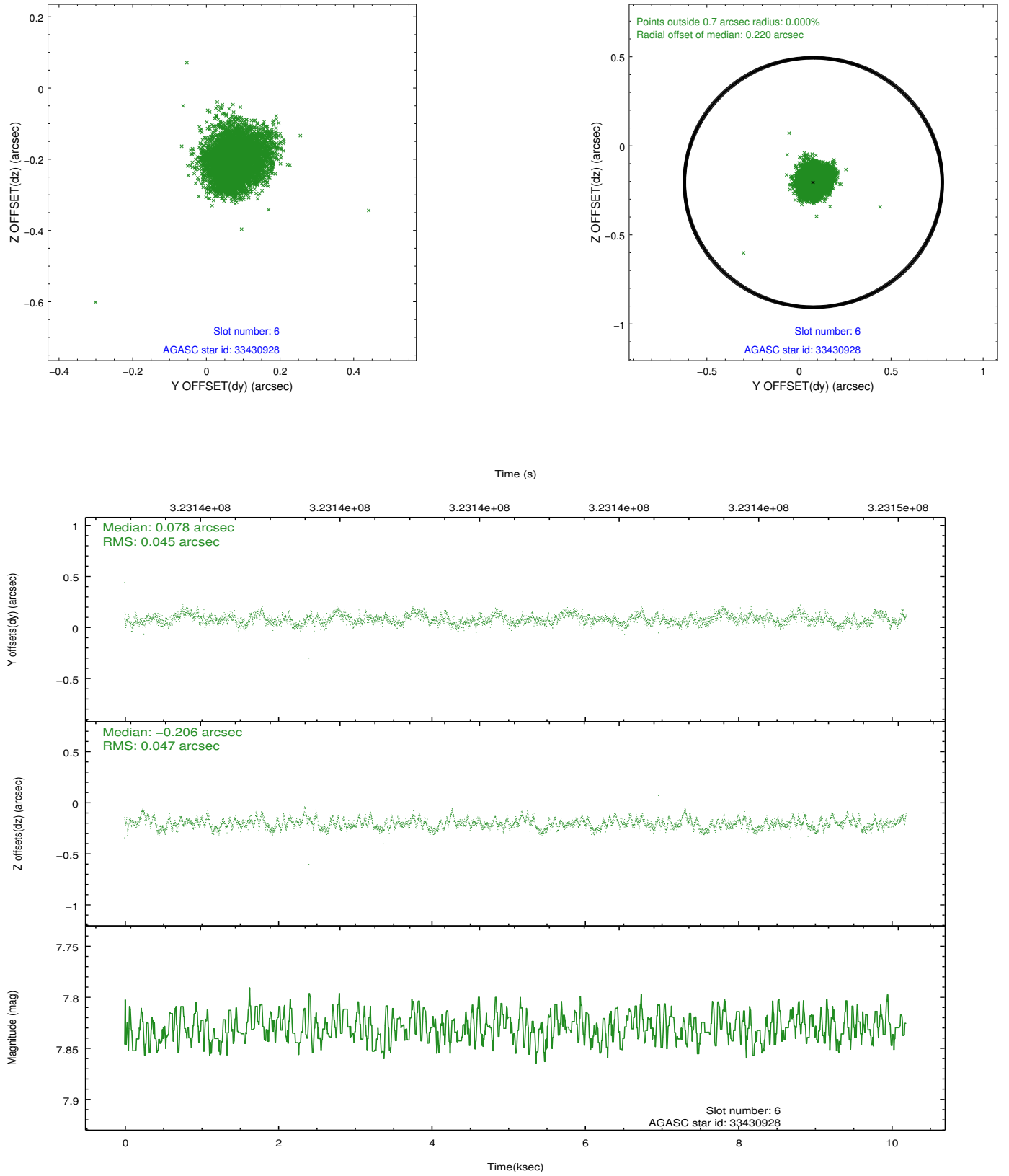
2.4.2 Slot 4



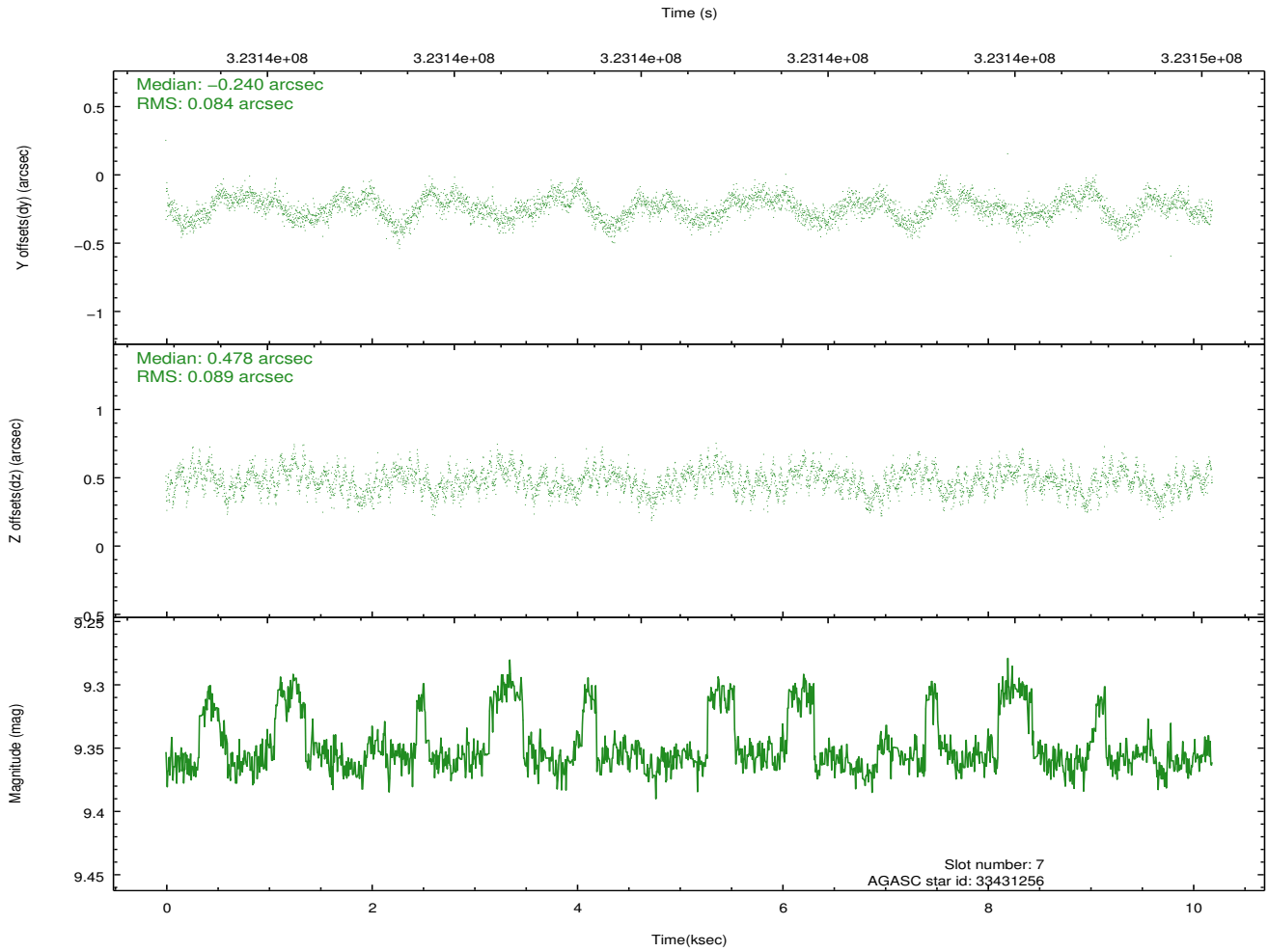
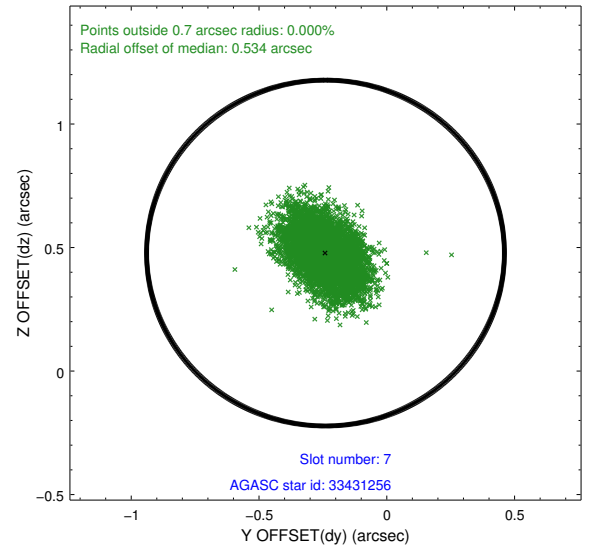
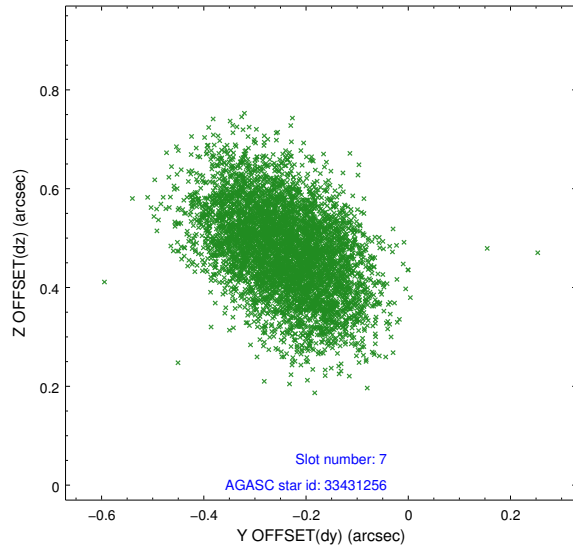
2.4.3 Slot 5



2.4.4 Slot 6

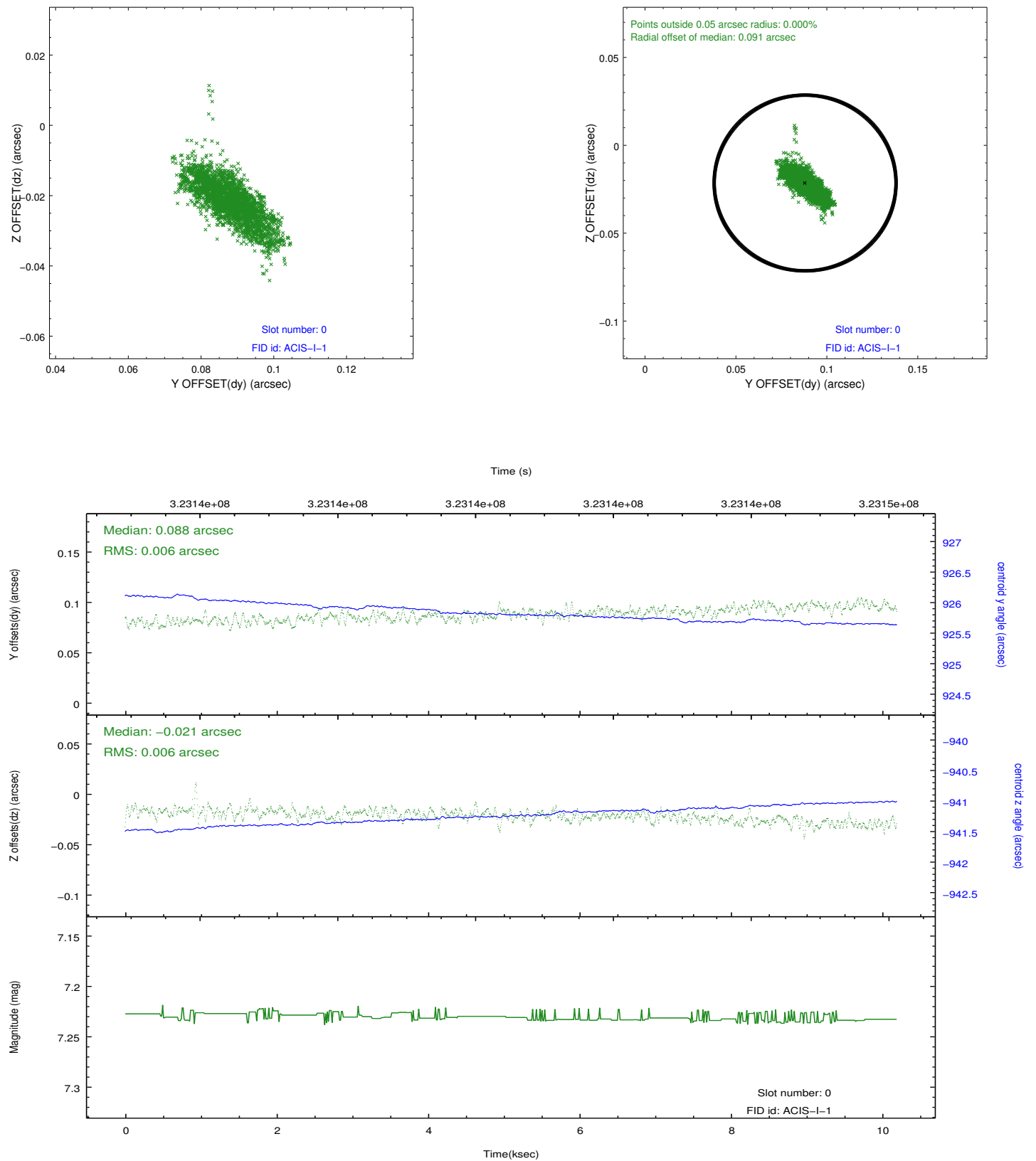


2.4.5 Slot 7

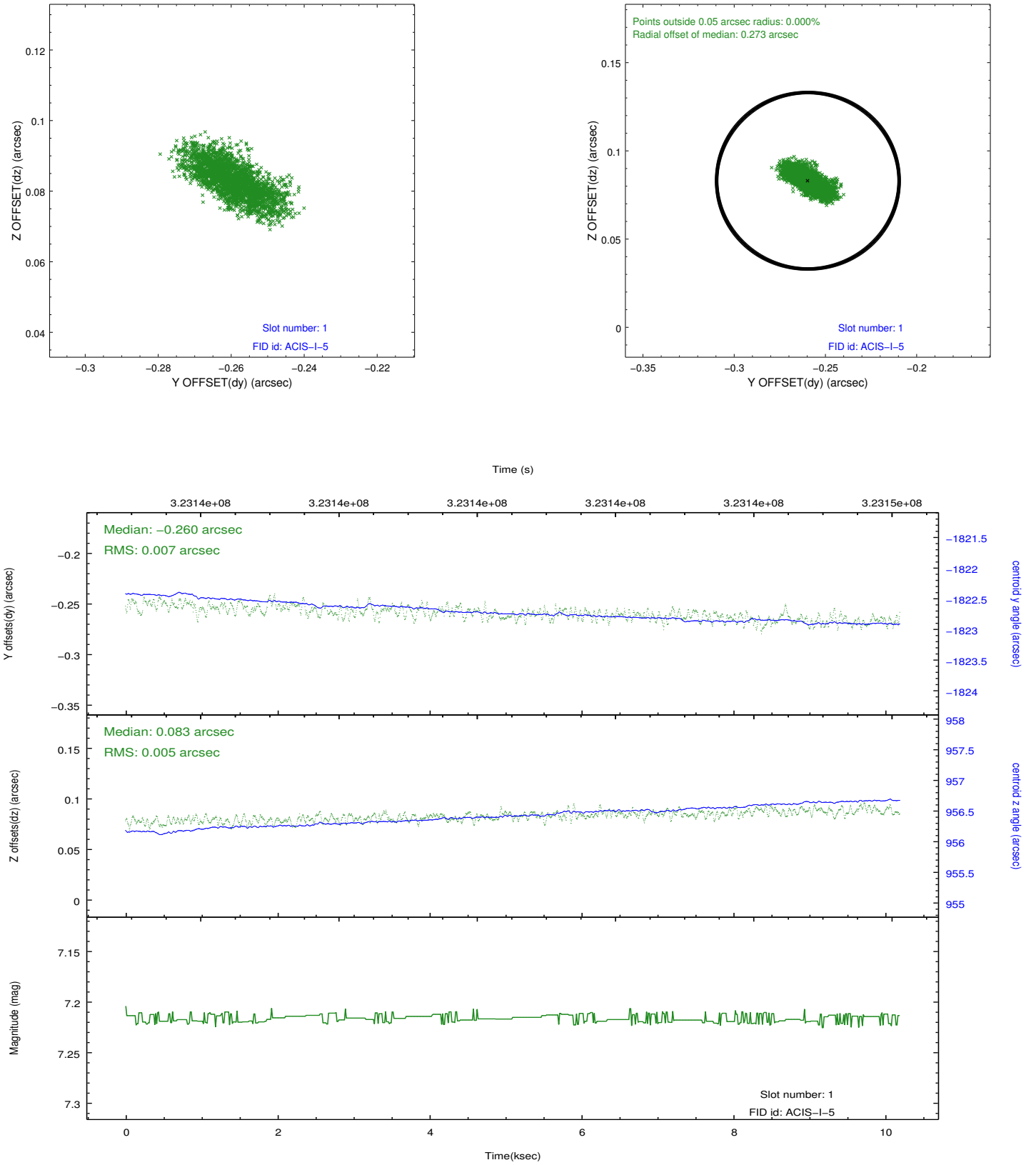


2.5 FID Slots

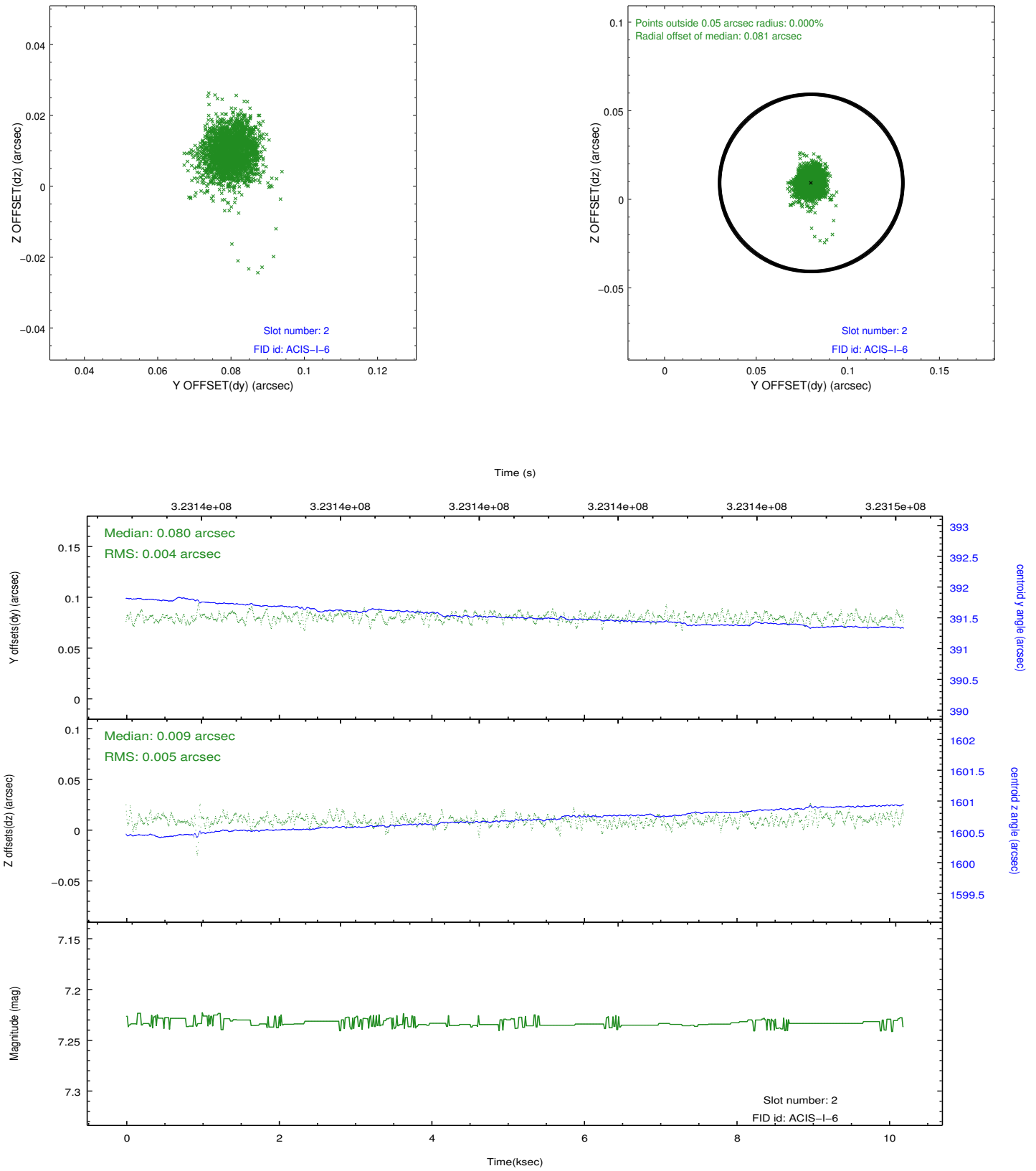
2.5.1 Slot 0



2.5.2 Slot 1



2.5.3 Slot 2



A Summary

A.1 Status

V&V Scientist	Jen Lauer
V&V Date (YYYY-MM-DD)	2012.05.14
V&V Edition	1
V&V Disposition and Status	OK
V&V Charge Time	10.183459

A.2 Comments