

V&V Reference Report

L2 ASCDS Version : 8.4.4

Observation 9373 - L2 Version 2
Chandra X-Ray Center

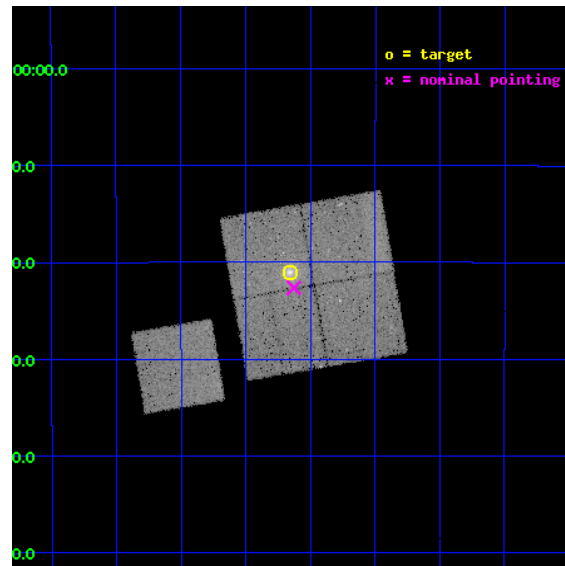
L2 Processing Date : May 16 2012

Contents

1	Front	2
2	OBI	3
2.1	OBI	3
2.1.1	Images	3
2.1.2	Bias	3
2.1.3	Parameters	4
2.1.4	Events	4
2.2	Compared Parameters	5
2.3	Aspect	6
2.4	Star Slots	9
2.4.1	Slot 3	9
2.4.2	Slot 4	10
2.4.3	Slot 5	11
2.4.4	Slot 6	12
2.4.5	Slot 7	13
2.5	FID Slots	14
2.5.1	Slot 0	14
2.5.2	Slot 1	15
2.5.3	Slot 2	16
A	Summary	17
A.1	Status	17
A.2	Comments	17

1 Front

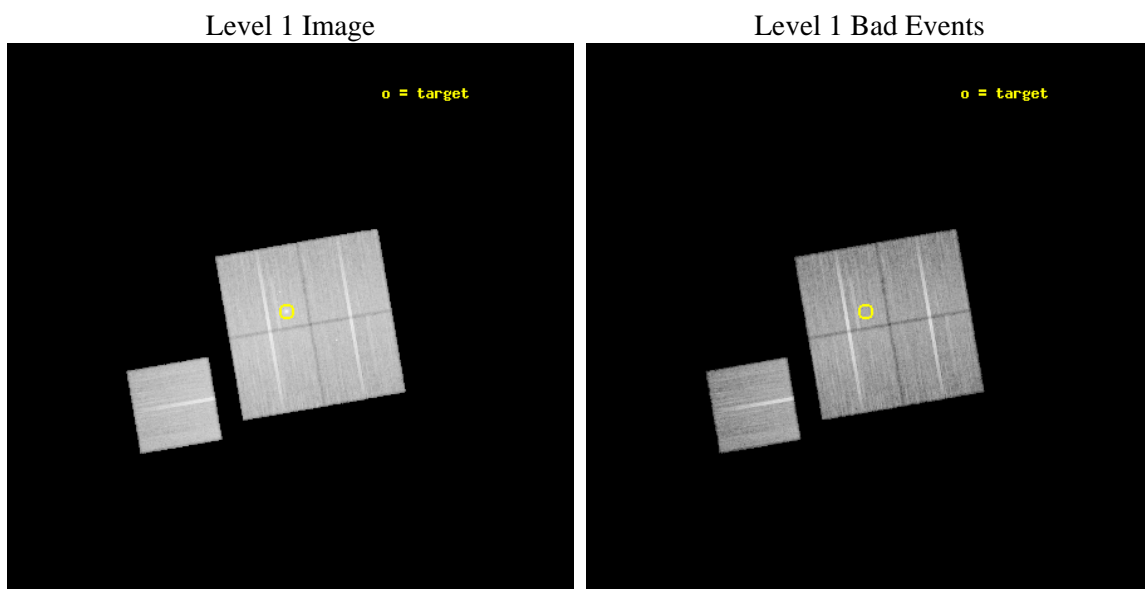
seq_num	800710	Sequence number
obs_id	9373	Observation id
title	Probing Dark Energy with Relaxed Galaxy Clusters	Proposal title
observer	Prof. Steven Allen	Principal investigator
object	MACS1427-25	Source name
dtcycle	0	
cycle	P	events from which exps? Prim/Second/Both
ra_targ	216.914167	Observer's specified target RA [deg]
dec_targ	-25.350556	Observer's specified target Dec [deg]
ra_nom	216.90696327827	Nominal RA [deg]
dec_nom	-25.37753164355	Nominal Dec [deg]
roll_nom	260.20559072194	Nominal Roll [deg]
revision	2	Processing version of data
ontime	28764.818250716	Sum of GTIs [s]
livetime	28388.984723919	Livetime [s]
ontime0	28758.536300004	Sum of GTIs [s]
ontime1	28761.677300394	Sum of GTIs [s]
ontime2	28761.677270412	Sum of GTIs [s]
ontime3	28764.818250716	Sum of GTIs [s]
ontime6	28771.100221276	Sum of GTIs [s]
l2events	106343	Number of level 2 events



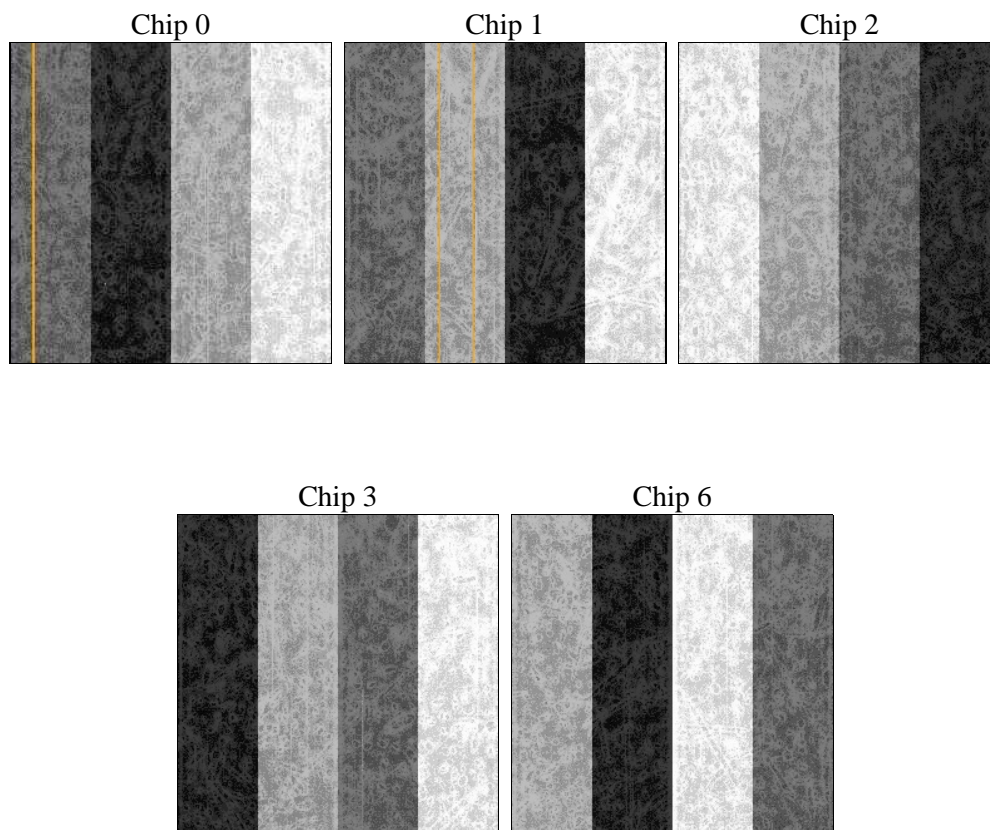
2 OBI

2.1 OBI

2.1.1 Images



2.1.2 Bias



2.1.3 Parameters

obi_num	0	Obi number	sched_exp_time	29000.000000	[s] Scheduled observation exposure time
ascdsver	8.4.4	Processing system revision	ontime	28764.818250716	Sum of GTIs [s]
caldsver	4.4.9	 	ontime0	28758.536300004	Sum of GTIs [s]
date	2012-05-16T15:09:47	Date and time of file creation	ontime1	28761.677300394	Sum of GTIs [s]
revision	2	Processing version of data	ontime2	28761.677270412	Sum of GTIs [s]
			ontime3	28764.818250716	Sum of GTIs [s]
			ontime6	28771.100221276	Sum of GTIs [s]
			l1events	1150353	Number of level 1 events

2.1.4 Events

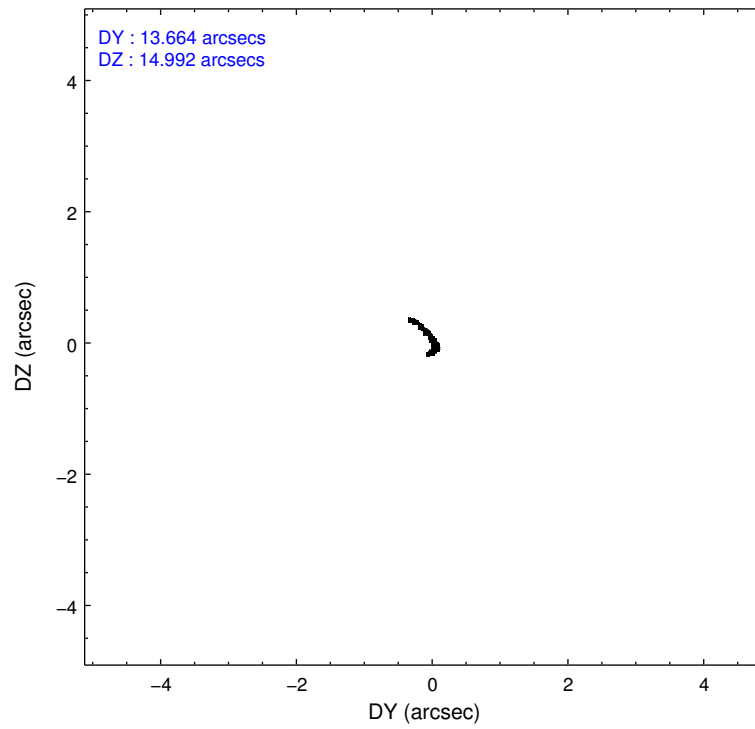
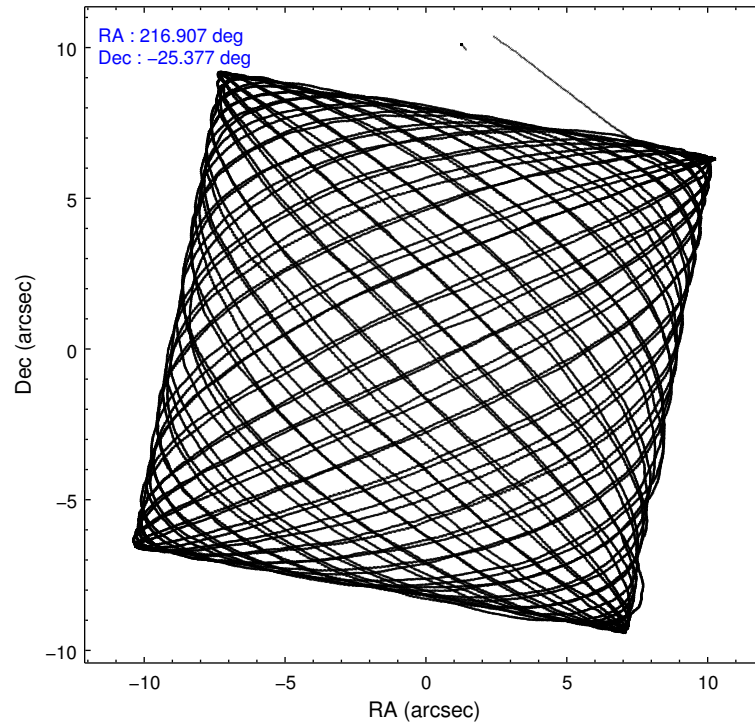
	ccd 0	ccd 1	ccd 2	ccd 3	ccd 6
level 1 events	215901	218083	244154	241269	230946
rejected events	191867	191136	220714	212833	207023
rejected %	88%	87%	90%	88%	89%

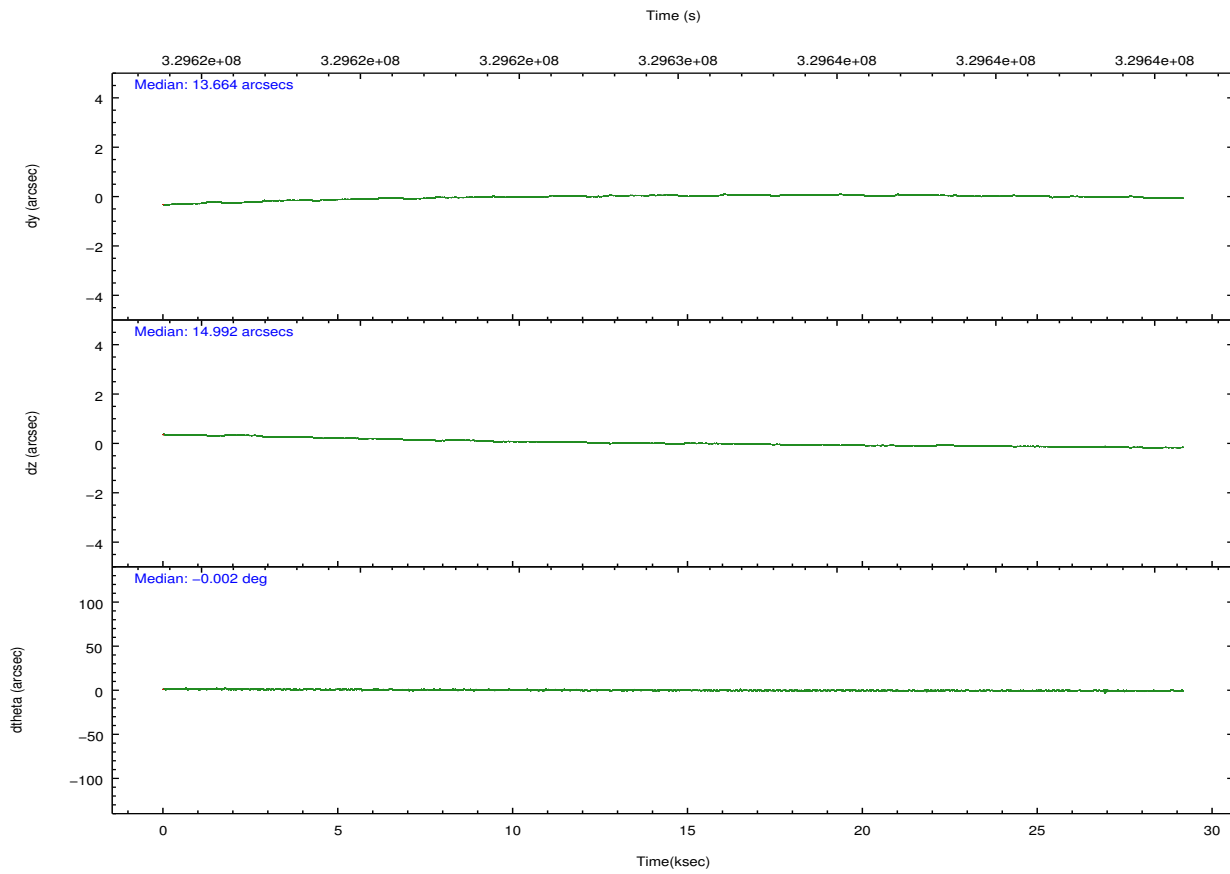
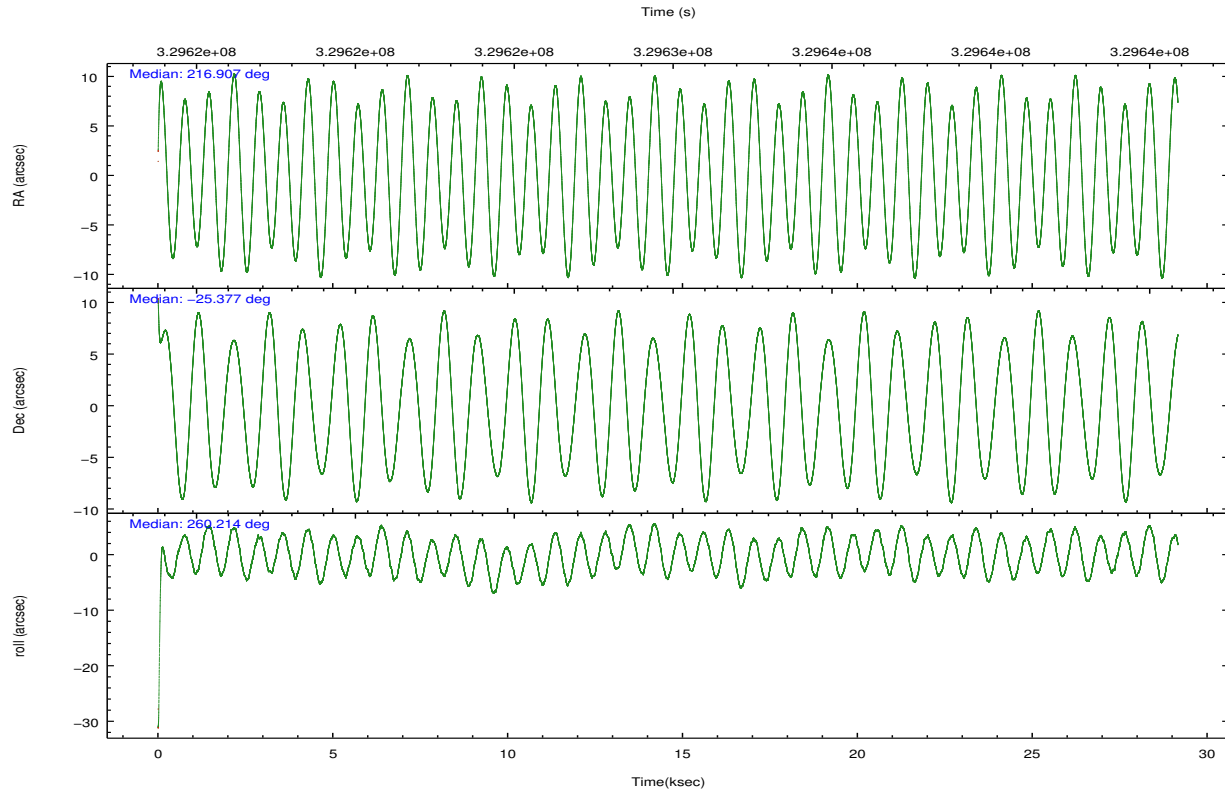
	ccd 0	ccd 1	ccd 2	ccd 3	ccd 6
grade 0 events	8735	9968	8635	12996	8359
	4%	4%	3%	5%	3%
grade 1 events	127	118	142	167	109
	0%	0%	0%	0%	0%
grade 2 events	5800	6111	5540	5471	5242
	2%	2%	2%	2%	2%
grade 3 events	2611	2754	2417	2652	2498
	1%	1%	0%	1%	1%
grade 4 events	2416	2792	2505	2679	2597
	1%	1%	1%	1%	1%
grade 5 events	8293	9161	7789	9820	9317
	3%	4%	3%	4%	4%
grade 6 events	4476	5329	4350	4647	5235
	2%	2%	1%	1%	2%
grade 7 events	183443	181850	212776	202837	197589
	84%	83%	87%	84%	85%

2.2 Compared Parameters

Parameter	Planned	Actual	Parameter	Planned	Actual
Instrument	ACIS	ACIS	Obspar format version number	7	7
Detector	ACIS-01236	ACIS-01236	Obspar file type	PREDICTED	ACTUAL
Grating	NONE	NONE	Obspar update status	NONE	UPDATED
Data mode	VFAINT	VFAINT	CCD I0 on	Y	Y
Observation mode	POINTING	POINTING	CCD I1 on	Y	Y
[deg] Pointing RA	216.896327	216.9069632782737	CCD I2 on	Y	Y
[deg] Pointing Dec	-25.351775	-25.37753164355013	CCD I3 on	Y	Y
[deg] Pointing Roll	259.992362	260.2055907219413	CCD S0 on	N	N
[mm] SIM focus pos	-0.782348	-0.7809083437167272	CCD S1 on	N	N
[mm] SIM defocus	0	0.001439871863259334	CCD S2 on	O1	Y
[mm] SIM translation stage pos	-229.442463	-229.4488714744609	CCD S3 on	N	N
[mm] SIM translation stage offset	-4.15	-4.143581528468758	CCD S4 on	N	N
[s] Observation start time (MET)	329615432.184000	329614267.71274	CCD S5 on	N	N
Observation start date	2008-06-11T23:49:27	2008-06-11T23:31:07	Number of optional ACIS chips dropped	0	0
[s] Observation end time (MET)	329644432.184000	329645354.42676	On-chip summing requested	N	N
Observation end date	2008-06-12T07:52:47	2008-06-12T08:09:14	Subarray requested	NONE	NONE
Read mode	TIMED	TIMED	Alternating exposures requested	N	N
			[s] Primary exposure time	0.000000	3.1

2.3 Aspect



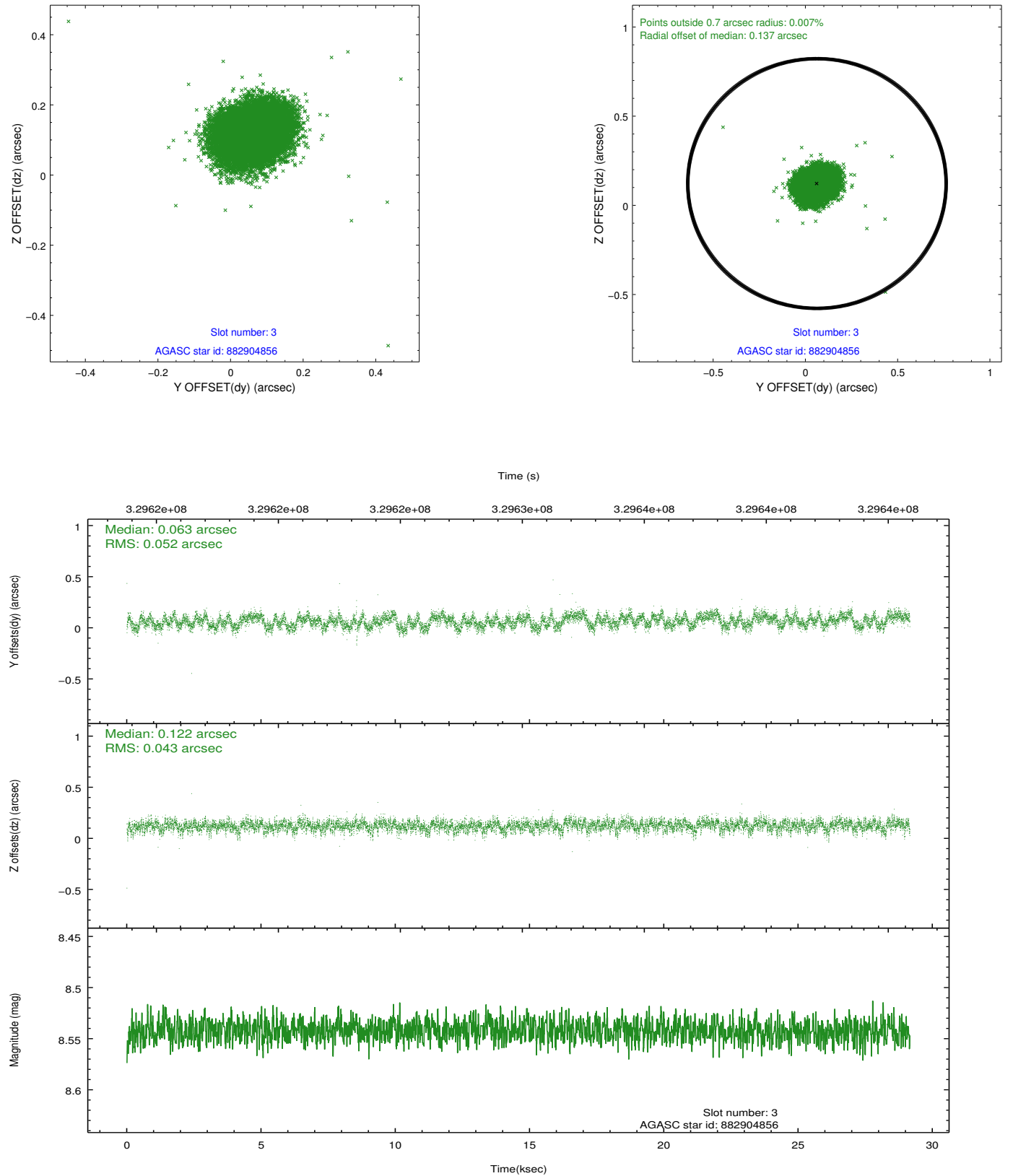


Slot Statistics

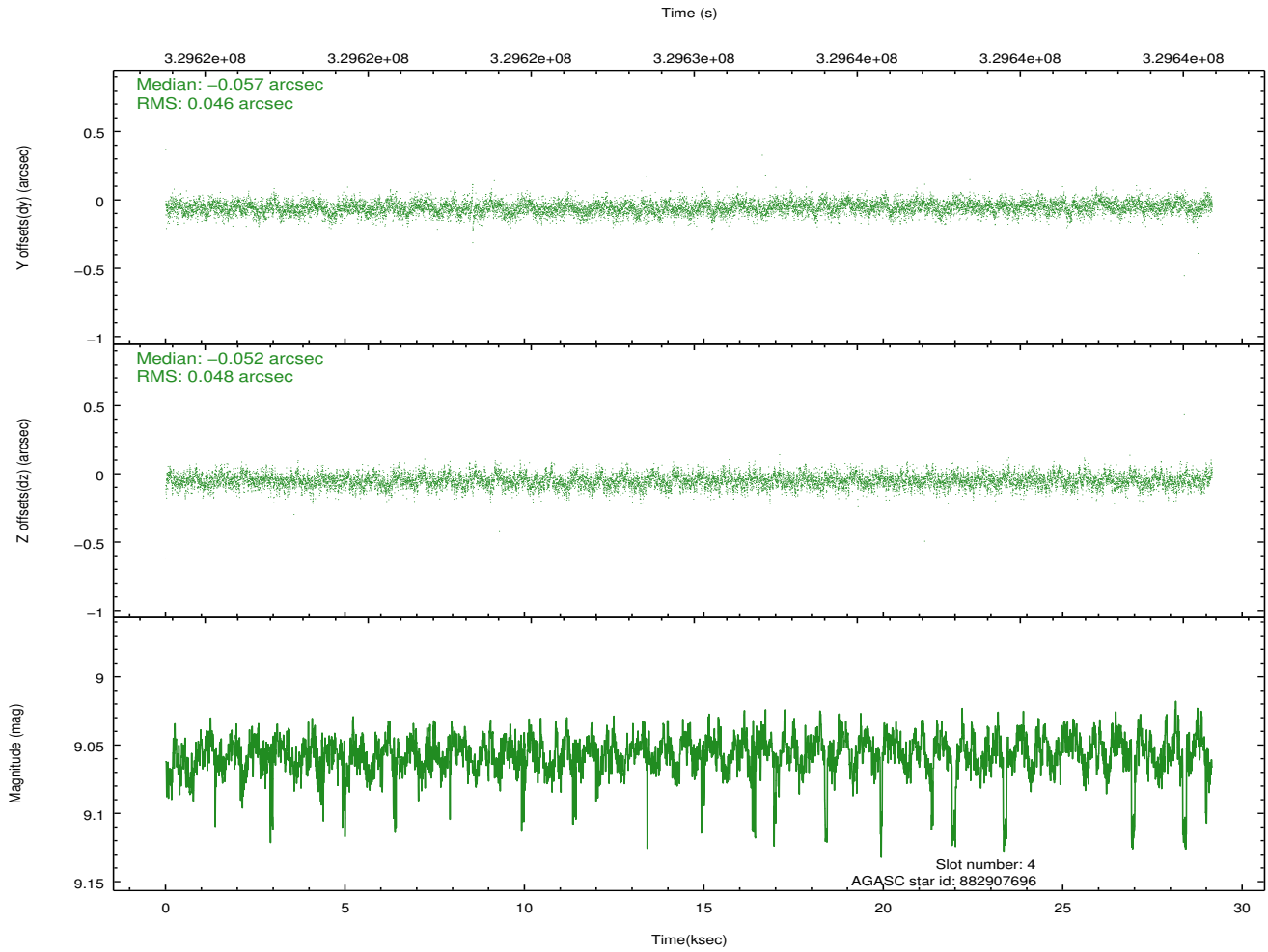
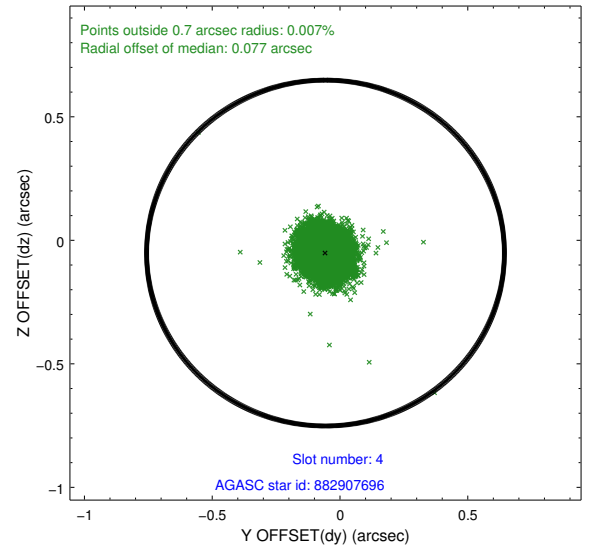
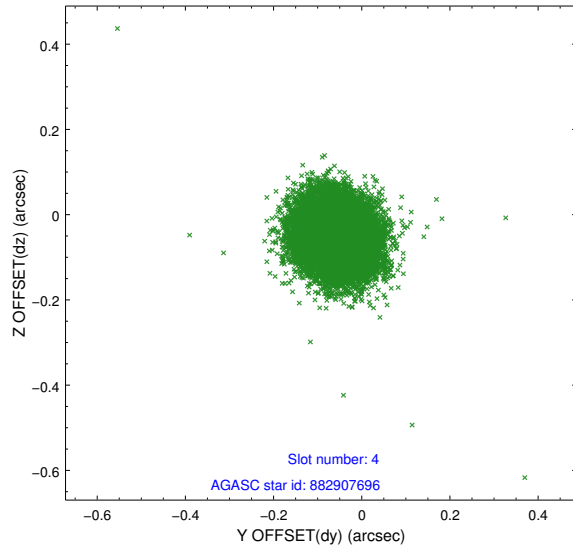
slot	status	id	mag	n_pts	med_dy	med_dz	dr1	dr2	ra	dec	mean_y	mean_z
0	FID	ACIS-I-1	7.00	7113	0.084	-0.028	0.019	0.028	0.000000	0.000000	925.87	-923.67
1	FID	ACIS-I-5	7.00	7112	-0.247	0.079	0.012	0.018	0.000000	0.000000	-1822.52	973.87
2	FID	ACIS-I-6	7.00	7112	0.076	0.017	0.011	0.017	0.000000	0.000000	391.32	1618.41
3	GUIDE	882904856	8.54	14216	0.063	0.122	0.072	0.114	216.920665	-24.856402	-1770.01	-231.51
4	GUIDE	882907696	9.06	14201	-0.057	-0.052	0.070	0.114	217.191715	-24.949241	-1593.49	697.93
5	GUIDE	882910336	8.47	14220	-0.159	0.026	0.064	0.101	217.244643	-25.343797	-223.71	1111.29
6	GUIDE	882911928	9.03	14215	0.050	-0.220	0.092	0.146	217.236658	-25.697332	1035.02	1303.28
7	GUIDE	882912632	8.88	14155	0.106	0.128	0.069	0.110	216.917283	-25.888697	1892.12	402.61

2.4 Star Slots

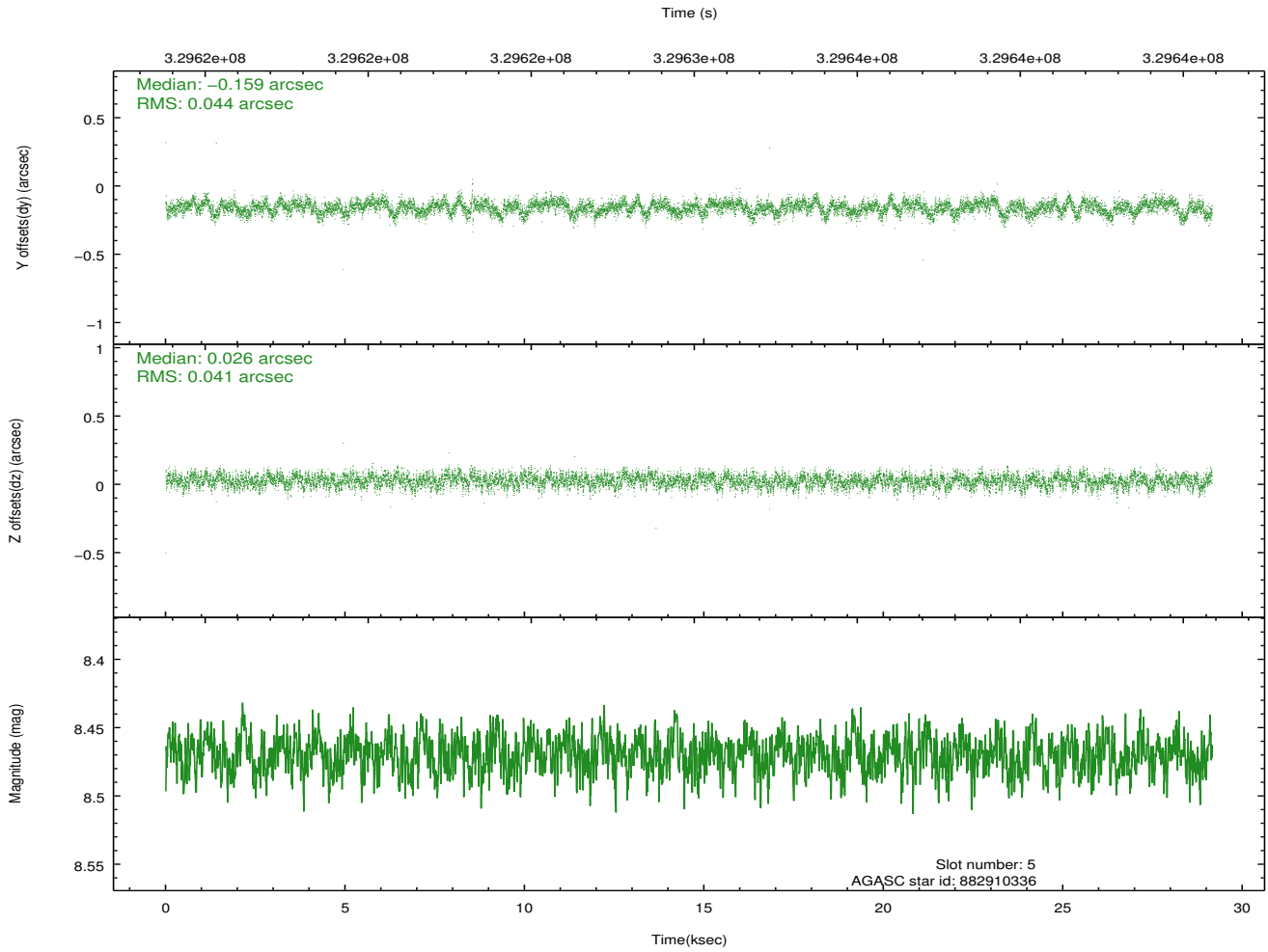
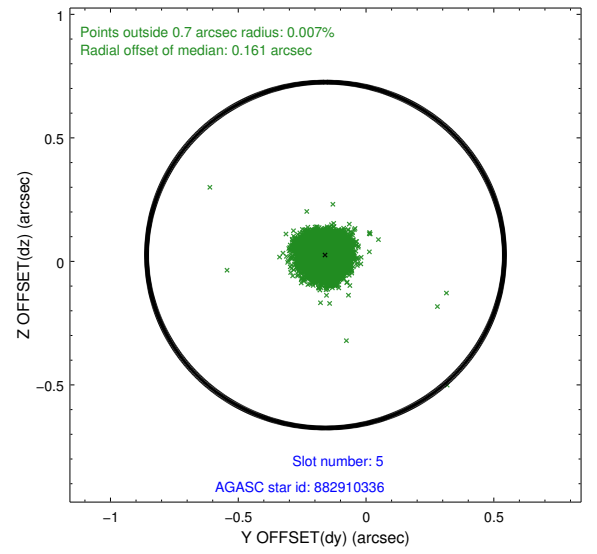
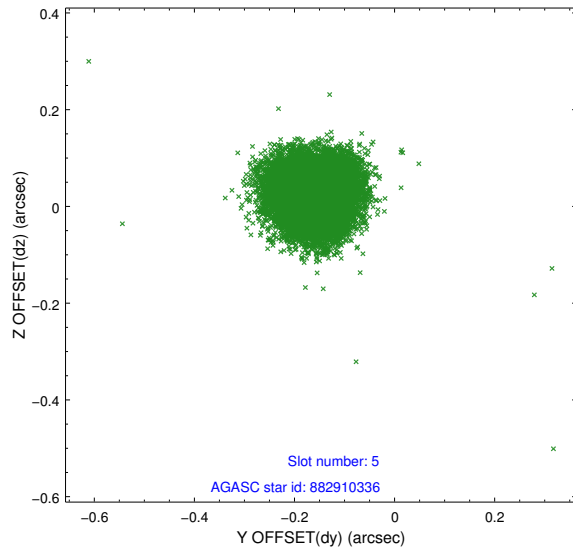
2.4.1 Slot 3



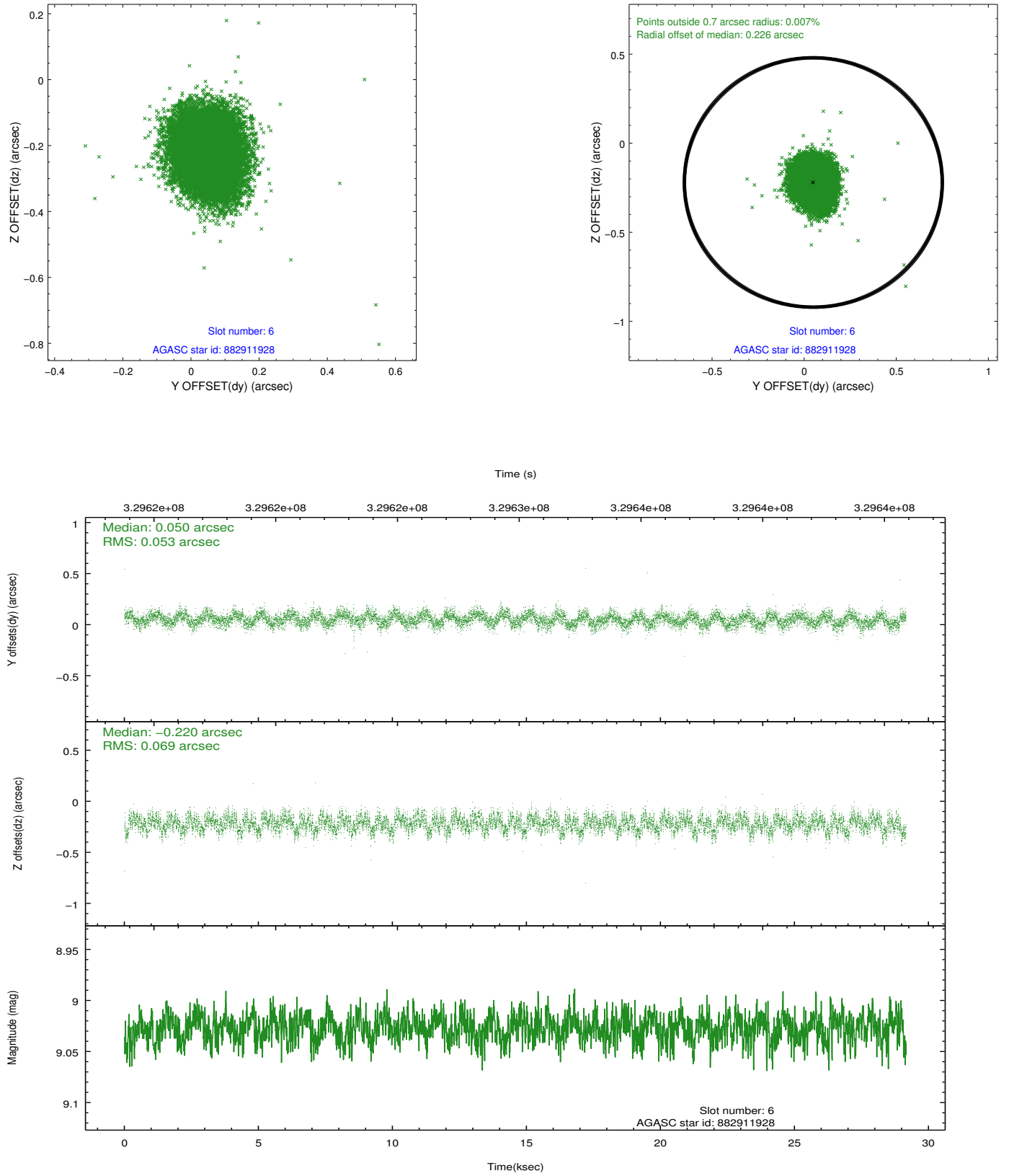
2.4.2 Slot 4



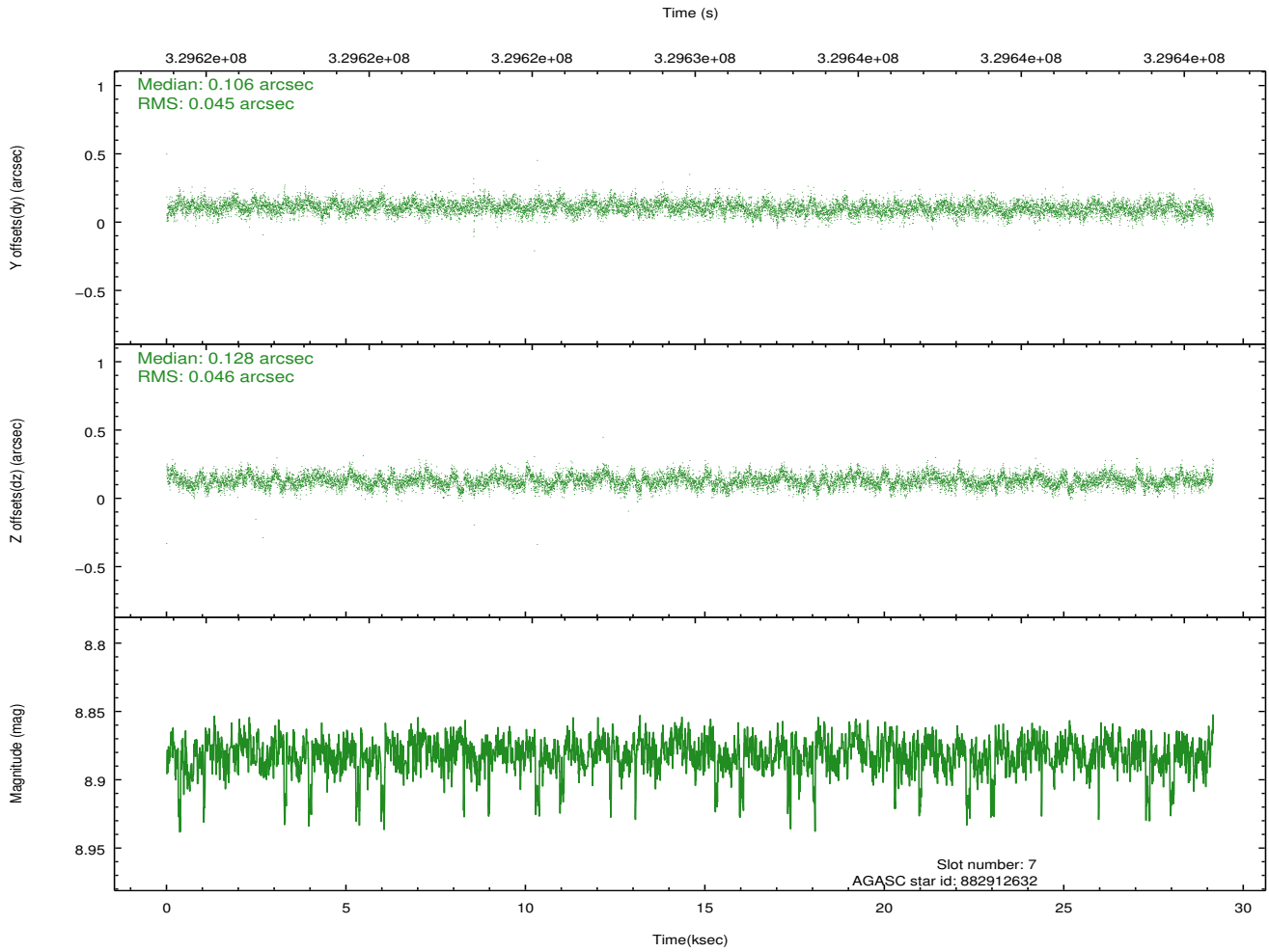
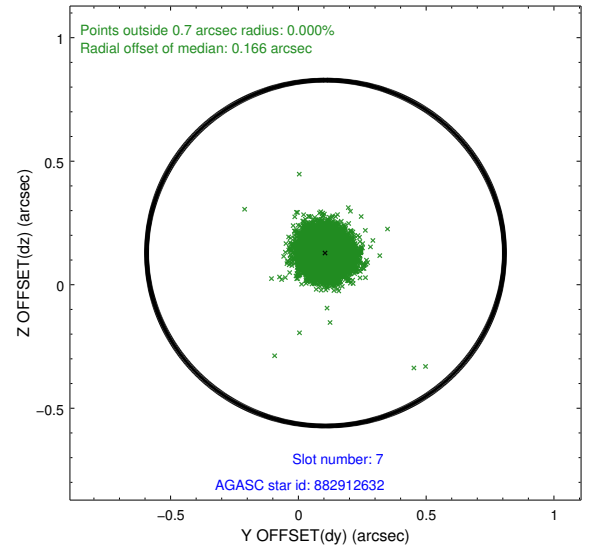
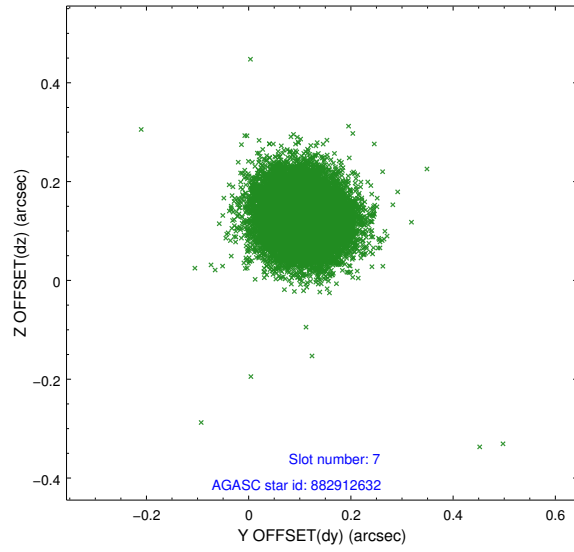
2.4.3 Slot 5



2.4.4 Slot 6

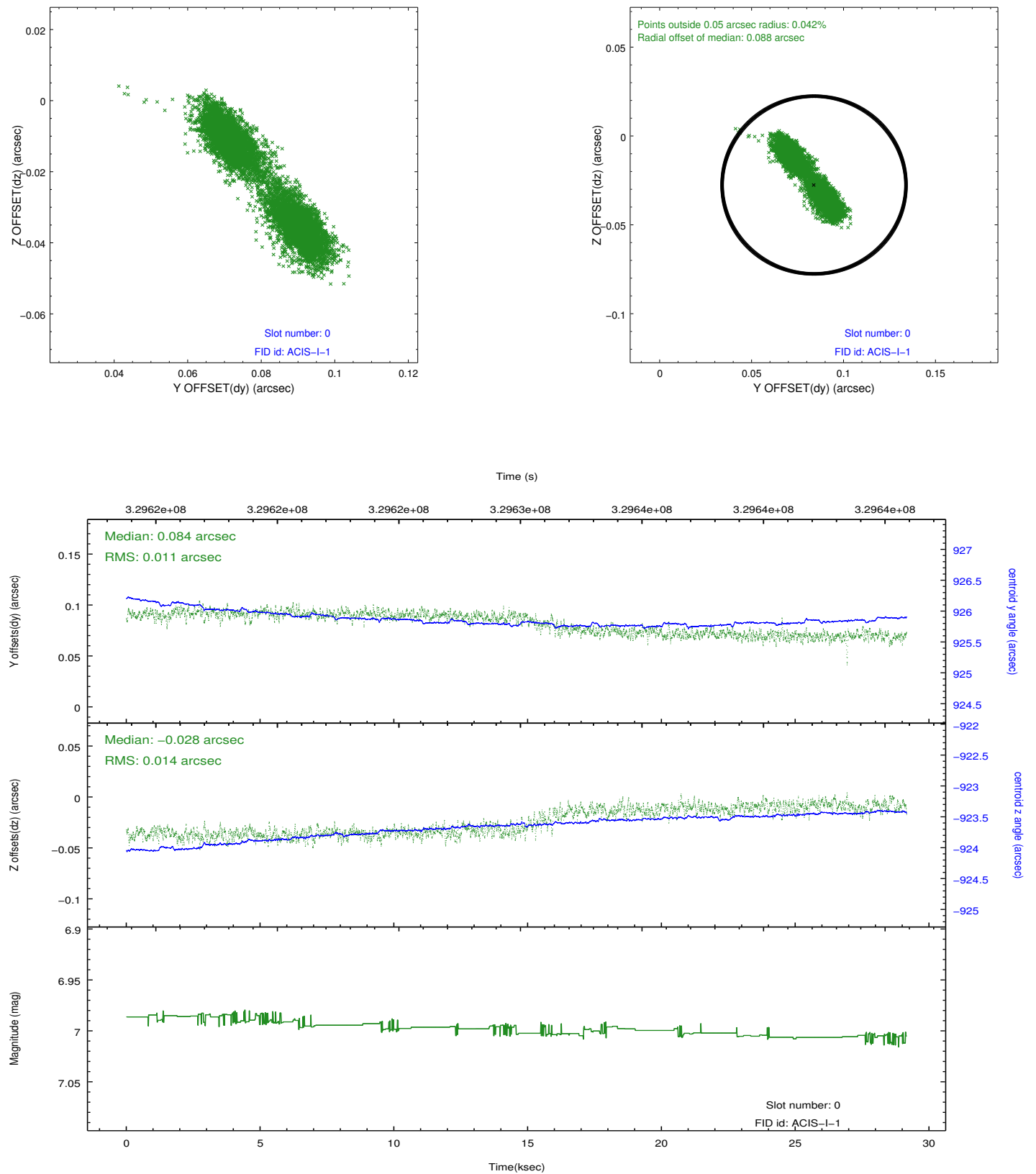


2.4.5 Slot 7

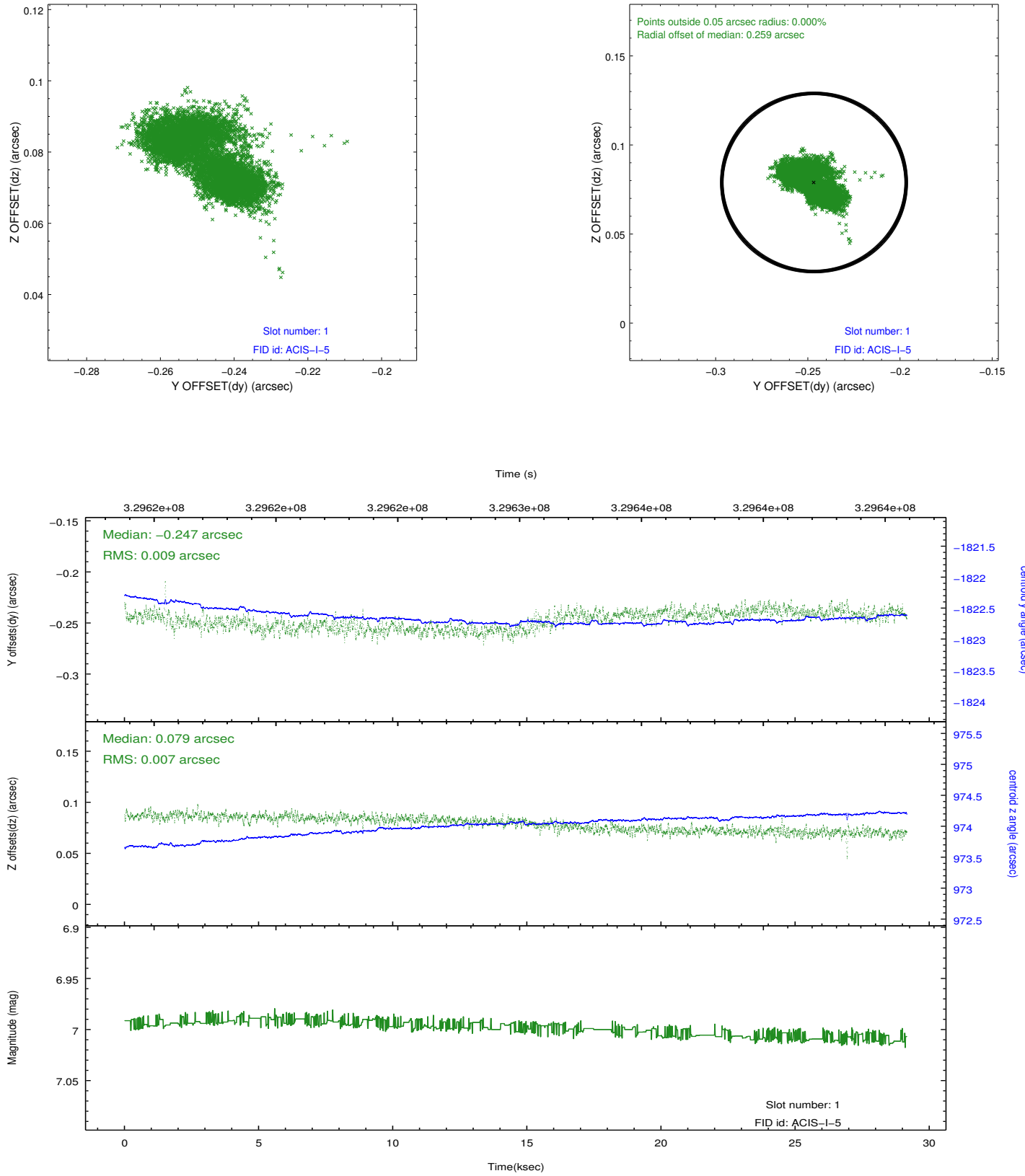


2.5 FID Slots

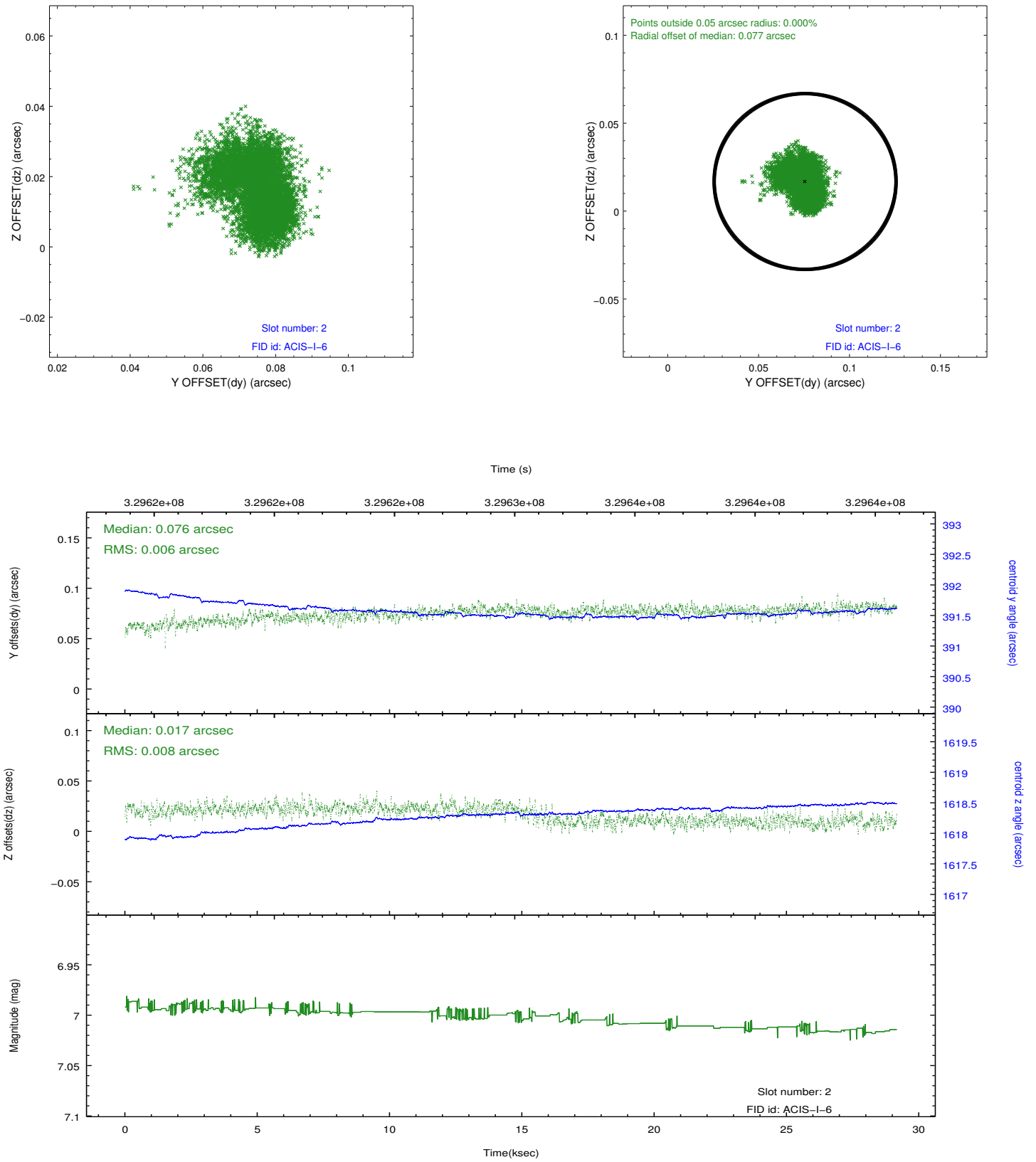
2.5.1 Slot 0



2.5.2 Slot 1



2.5.3 Slot 2



A Summary

A.1 Status

V&V Scientist	Jen Lauer
V&V Date (YYYY-MM-DD)	2012.05.22
V&V Edition	1
V&V Disposition and Status	OK
V&V Charge Time	28.7648182

A.2 Comments