

V&V Reference Report

L2 ASCDS Version : 8.4.4

Observation 9327 - L2 Version 2
Chandra X-Ray Center

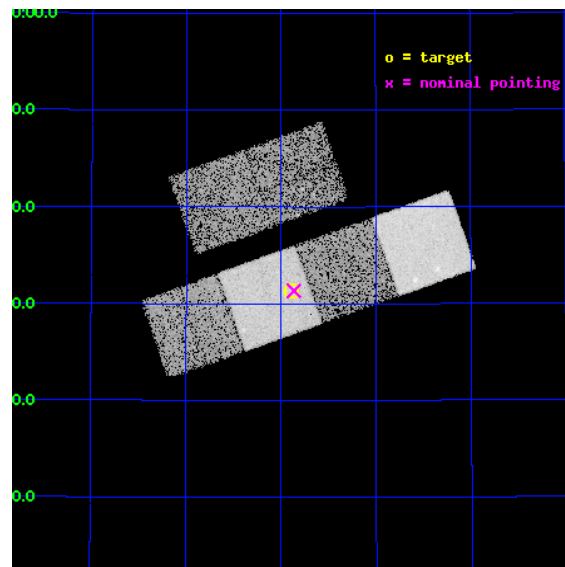
L2 Processing Date : May 9 2012

Contents

1	Front	2
2	OBI	3
2.1	OBI	3
2.1.1	Images	3
2.1.2	Bias	3
2.1.3	Parameters	4
2.1.4	Events	4
2.2	Compared Parameters	5
2.3	Aspect	6
2.4	Star Slots	9
2.4.1	Slot 3	9
2.4.2	Slot 4	10
2.4.3	Slot 5	11
2.4.4	Slot 6	12
2.4.5	Slot 7	13
2.5	FID Slots	14
2.5.1	Slot 0	14
2.5.2	Slot 1	15
2.5.3	Slot 2	16
A	Summary	17
A.1	Status	17
A.2	Comments	17

1 Front

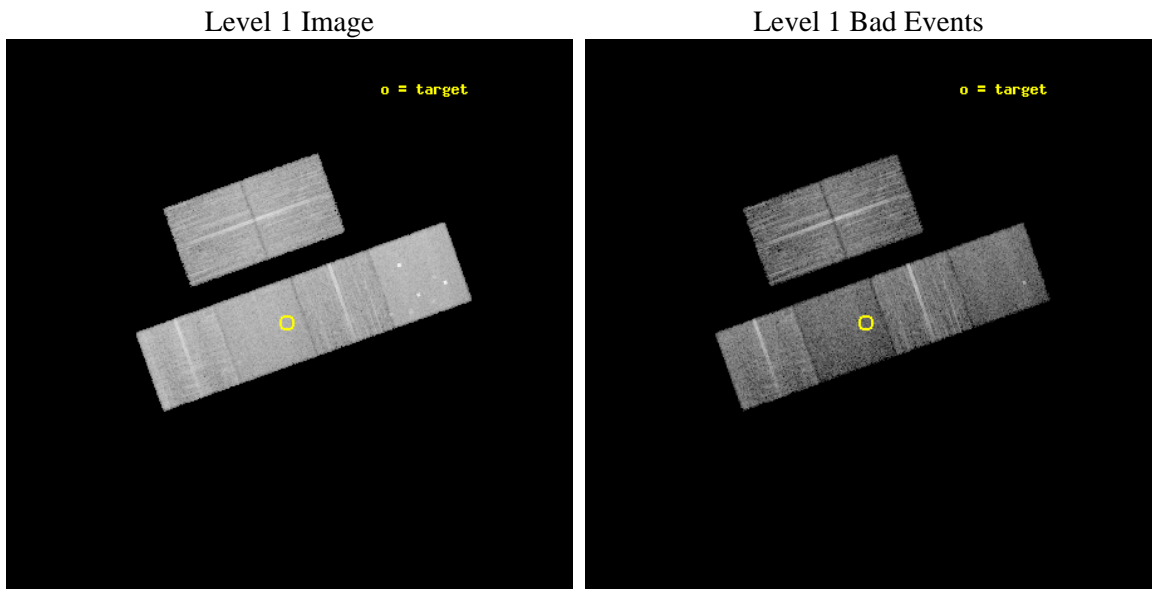
seq_num	701767	Sequence number
obs_id	9327	Observation id
title	A Chandra Survey of Nearby X-shaped Radio Galaxies	Proposal title
observer	Prof Christopher Reynolds	Principal investigator
object	J1020+4831 4C+48.29	Source name
dtcycle	0	
cycle	P	events from which exps? Prim/Second/Both
ra_targ	155.223333	Observer's specified target RA [deg]
dec_targ	48.523333	Observer's specified target Dec [deg]
ra_nom	155.21623392948	Nominal RA [deg]
dec_nom	48.522314835832	Nominal Dec [deg]
roll_nom	160.42093502514	Nominal Roll [deg]
revision	2	Processing version of data
ontime	9647.999964118	Sum of GTIs [s]
livetime	9525.8311792442	Livetime [s]
ontime2	9647.999964118	Sum of GTIs [s]
ontime3	9647.999964118	Sum of GTIs [s]
ontime5	9647.999964118	Sum of GTIs [s]
ontime6	9647.999964118	Sum of GTIs [s]
ontime7	9647.999964118	Sum of GTIs [s]
ontime8	9647.999964118	Sum of GTIs [s]
l2events	115122	Number of level 2 events



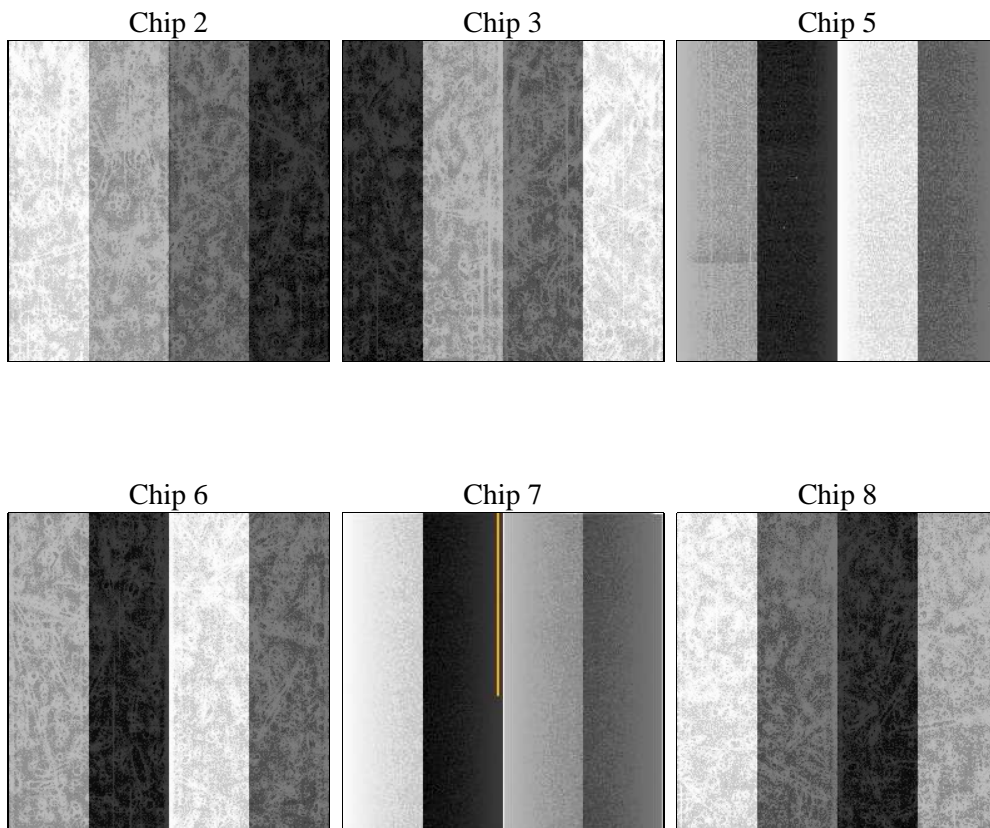
2 OBI

2.1 OBI

2.1.1 Images



2.1.2 Bias



2.1.3 Parameters

obi_num	0	Obi number	sched_exp_time	9500.000000	[s] Scheduled observation exposure time
ascdsver	8.4.4	Processing system revision	ontime	9647.999964118	Sum of GTIs [s]
caldsver	4.4.9	 	ontime2	9647.999964118	Sum of GTIs [s]
date	2012-05-09T04:37:19	Date and time of file creation	ontime3	9647.999964118	Sum of GTIs [s]
revision	2	Processing version of data	ontime5	9647.999964118	Sum of GTIs [s]
			ontime6	9647.999964118	Sum of GTIs [s]
			ontime7	9647.999964118	Sum of GTIs [s]
			ontime8	9647.999964118	Sum of GTIs [s]
			l1events	537278	Number of level 1 events

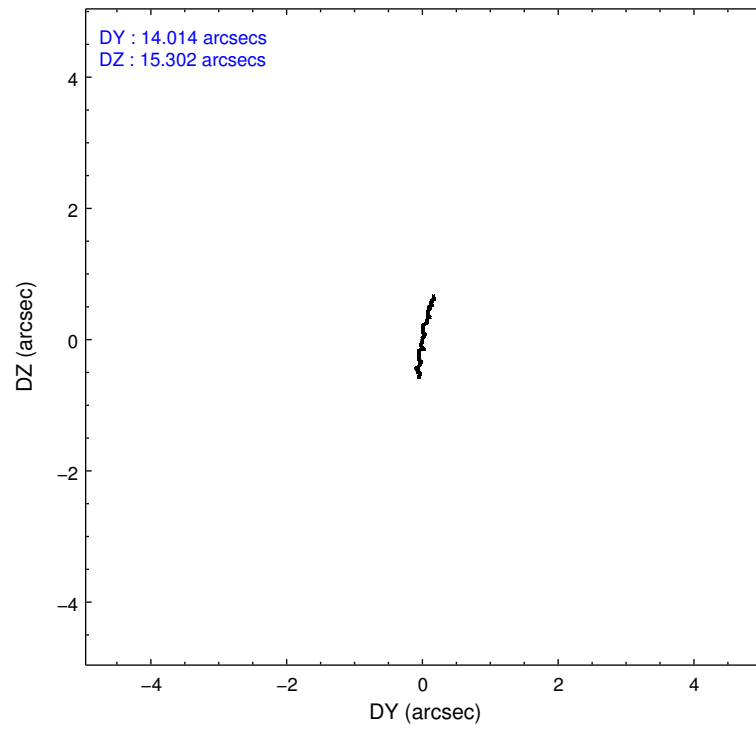
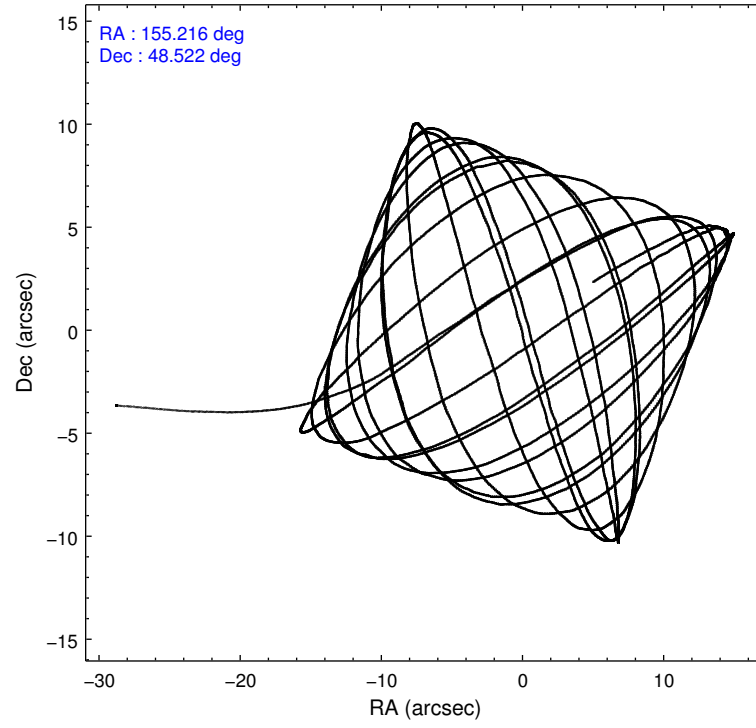
2.1.4 Events

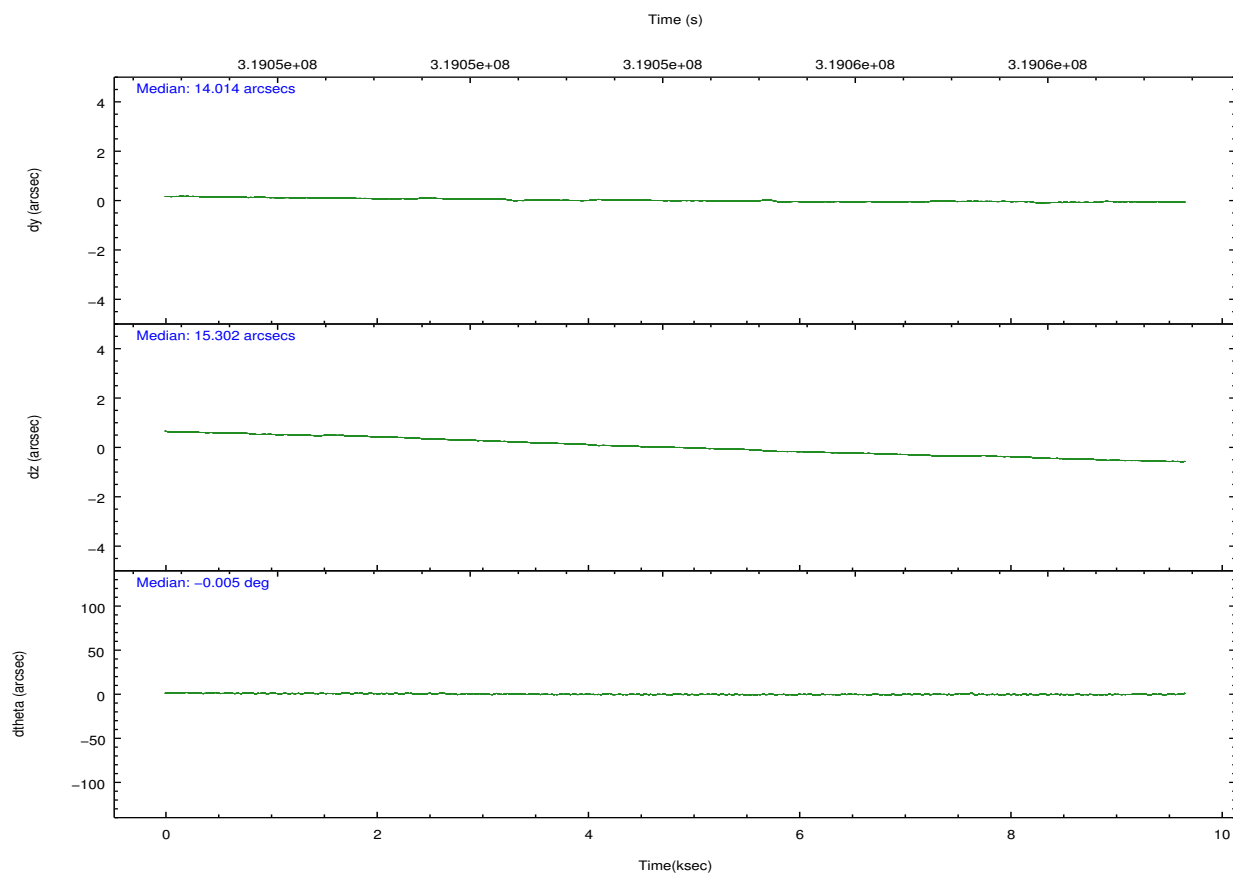
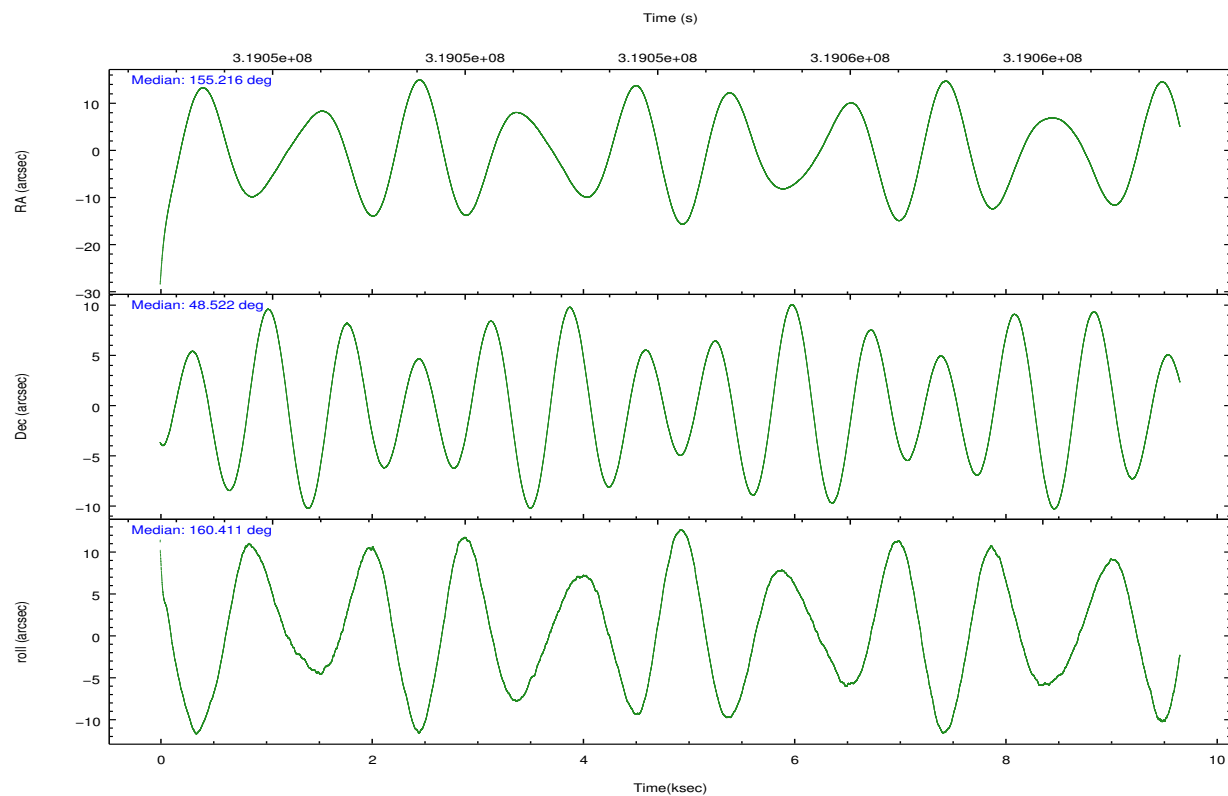
	ccd 2	ccd 3	ccd 5	ccd 6	ccd 7	ccd 8		ccd 2	ccd 3	ccd 5	ccd 6	ccd 7	ccd 8
level 1 events	79980	75906	111738	80112	88090	101452	grade 0 events	2795	2519	7211	2858	3847	7350
rejected events	72431	68778	57066	72176	48914	77490		3%	3%	6%	3%	4%	7%
rejected %	90%	90%	51%	90%	55%	76%	grade 1 events	51	49	209	46	103	71
								0%	0%	0%	0%	0%	0%
							grade 2 events	1798	1637	16534	1775	8184	5719
								2%	2%	14%	2%	9%	5%
							grade 3 events	832	880	2245	895	3672	2638
								1%	1%	2%	1%	4%	2%
							grade 4 events	823	812	2072	854	3620	2456
								1%	1%	1%	1%	4%	2%
							grade 5 events	2647	3111	8346	3143	9255	4643
								3%	4%	7%	3%	10%	4%
							grade 6 events	1487	1462	28093	1773	20886	6644
								1%	1%	25%	2%	23%	6%
							grade 7 events	69547	65436	47028	68768	38523	71931
								86%	86%	42%	85%	43%	70%

2.2 Compared Parameters

Parameter	Planned	Actual	Parameter	Planned	Actual
Instrument	ACIS	ACIS	Obspar format version number	7	7
Detector	ACIS-235678	ACIS-235678	Obspar file type	PREDICTED	ACTUAL
Grating	NONE	NONE	Obspar update status	NONE	UPDATED
Data mode	FAINT	FAINT	CCD I0 on	N	N
Observation mode	POINTING	POINTING	CCD I1 on	N	N
[deg] Pointing RA	155.256669	155.216233929475	CCD I2 on	O2	Y
[deg] Pointing Dec	48.527627	48.52231483583247	CCD I3 on	O4	Y
[deg] Pointing Roll	160.234016	160.4209350251378	CCD S0 on	N	N
[mm] SIM focus pos	-0.684267	-0.6828225247311905	CCD S1 on	O1	Y
[mm] SIM defocus	0	0.001444936568705701	CCD S2 on	O5	Y
[mm] SIM translation stage pos	-190.132523	-190.1425803651734	CCD S3 on	Y	Y
[mm] SIM translation stage offset	0	0.01005778216563158	CCD S4 on	O3	Y
[s] Observation start time (MET)	319049460.184000	319048271.48581	CCD S5 on	N	N
Observation start date	2008-02-10T16:49:55	2008-02-10T16:31:11	Number of optional ACIS chips dropped	0	0
[s] Observation end time (MET)	319058960.184000	319059242.06134	On-chip summing requested	N	N
Observation end date	2008-02-10T19:28:15	2008-02-10T19:34:02	Subarray requested	NONE	NONE
Read mode	TIMED	TIMED	Alternating exposures requested	N	N
			[s] Primary exposure time	0.000000	3.2

2.3 Aspect



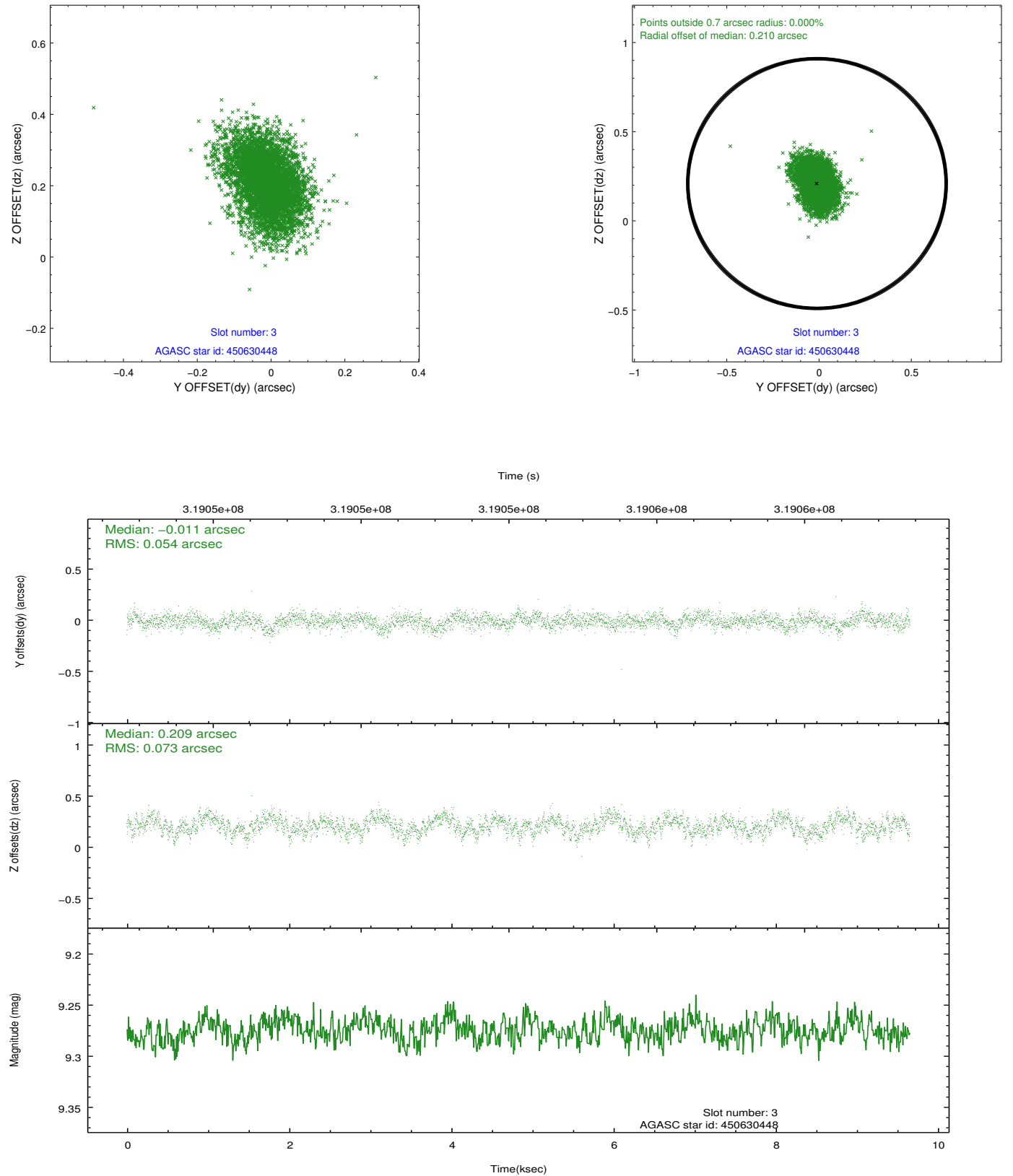


Slot Statistics

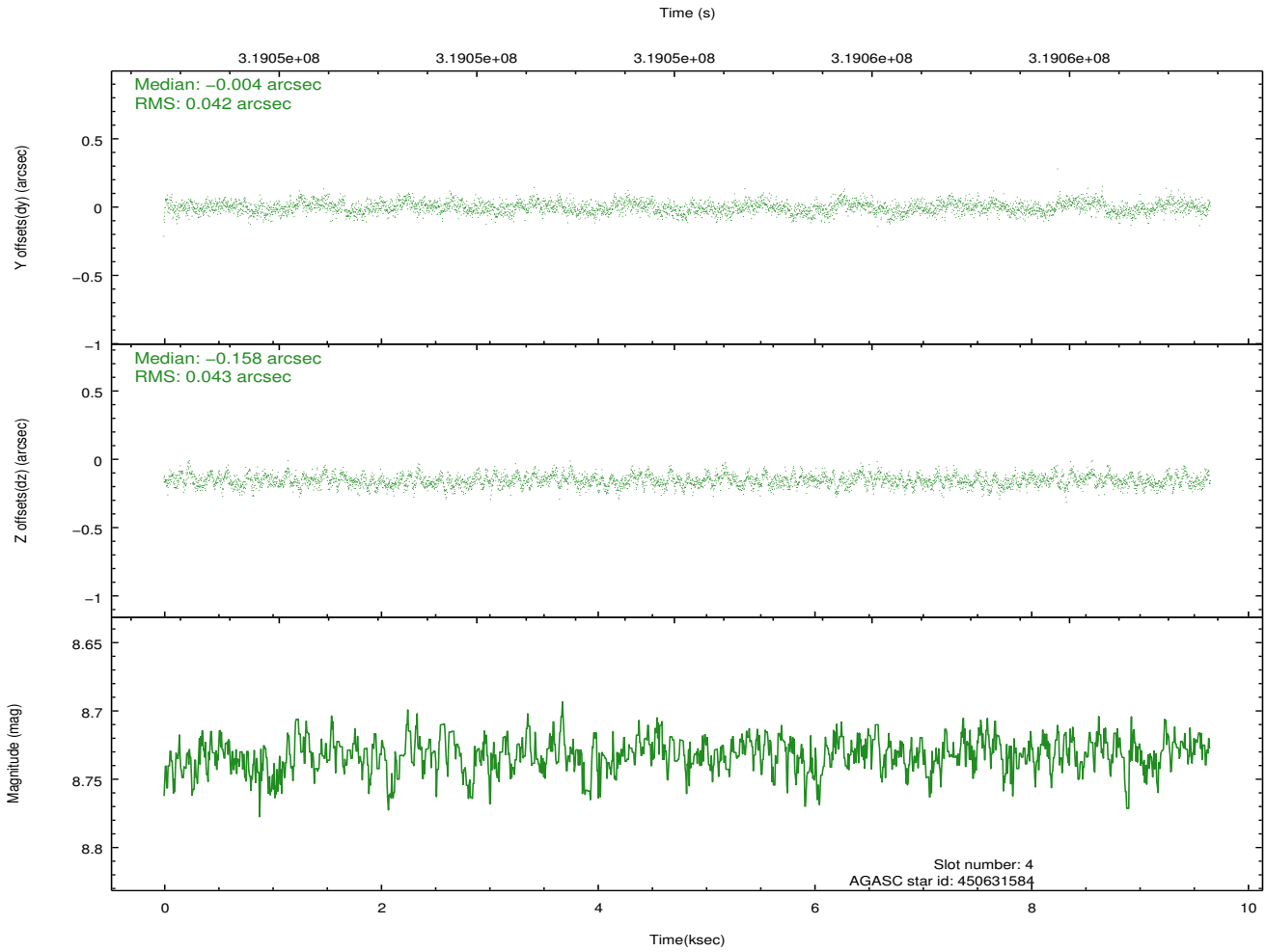
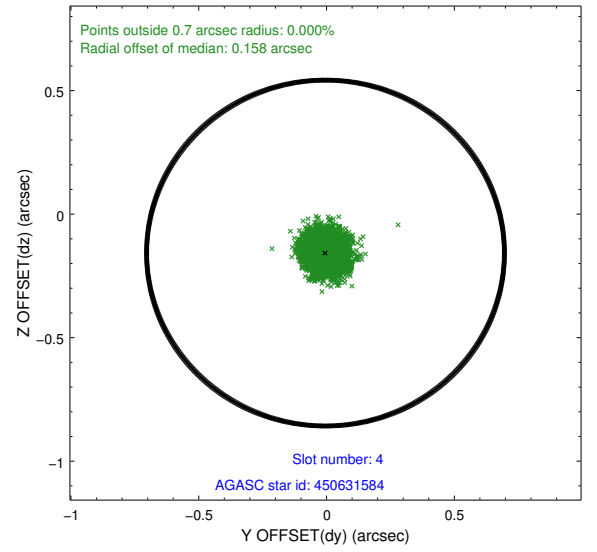
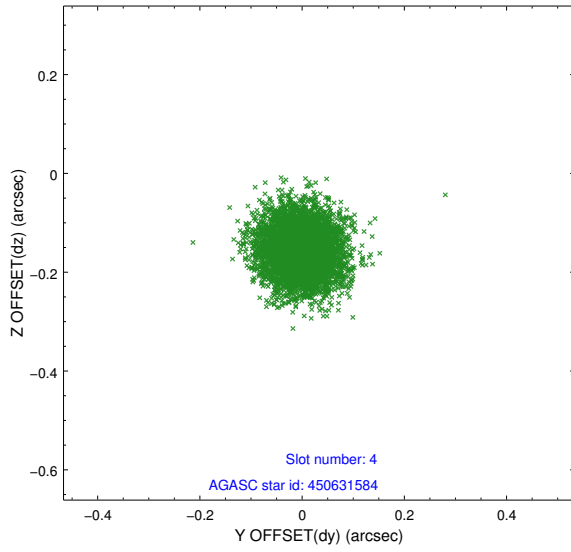
slot	status	id	mag	n_pts	med_dy	med_dz	dr1	dr2	ra	dec	mean_y	mean_z
0	FID	ACIS-S-2	7.09	2355	-0.069	-0.021	0.008	0.013	0.000000	0.000000	-767.02	-1736.69
1	FID	ACIS-S-4	7.19	2355	0.188	0.039	0.006	0.011	0.000000	0.000000	2146.23	171.31
2	FID	ACIS-S-5	7.22	2355	-0.150	-0.010	0.008	0.013	0.000000	0.000000	-1819.26	165.52
3	GUIDE	450630448	9.27	4709	-0.011	0.209	0.096	0.157	155.136414	48.612391	373.07	-189.98
4	GUIDE	450631584	8.73	4707	-0.004	-0.158	0.064	0.103	154.734858	48.618160	1280.92	109.67
5	GUIDE	450631768	9.15	4708	-0.005	-0.103	0.104	0.164	155.362295	47.870739	-1039.56	2139.19
6	GUIDE	450631944	8.93	4704	0.099	0.015	0.082	0.131	155.513728	48.292028	-865.93	589.50
7	GUIDE	450633048	7.68	4708	-0.081	0.031	0.063	0.104	155.424410	48.041995	-969.69	1509.05

2.4 Star Slots

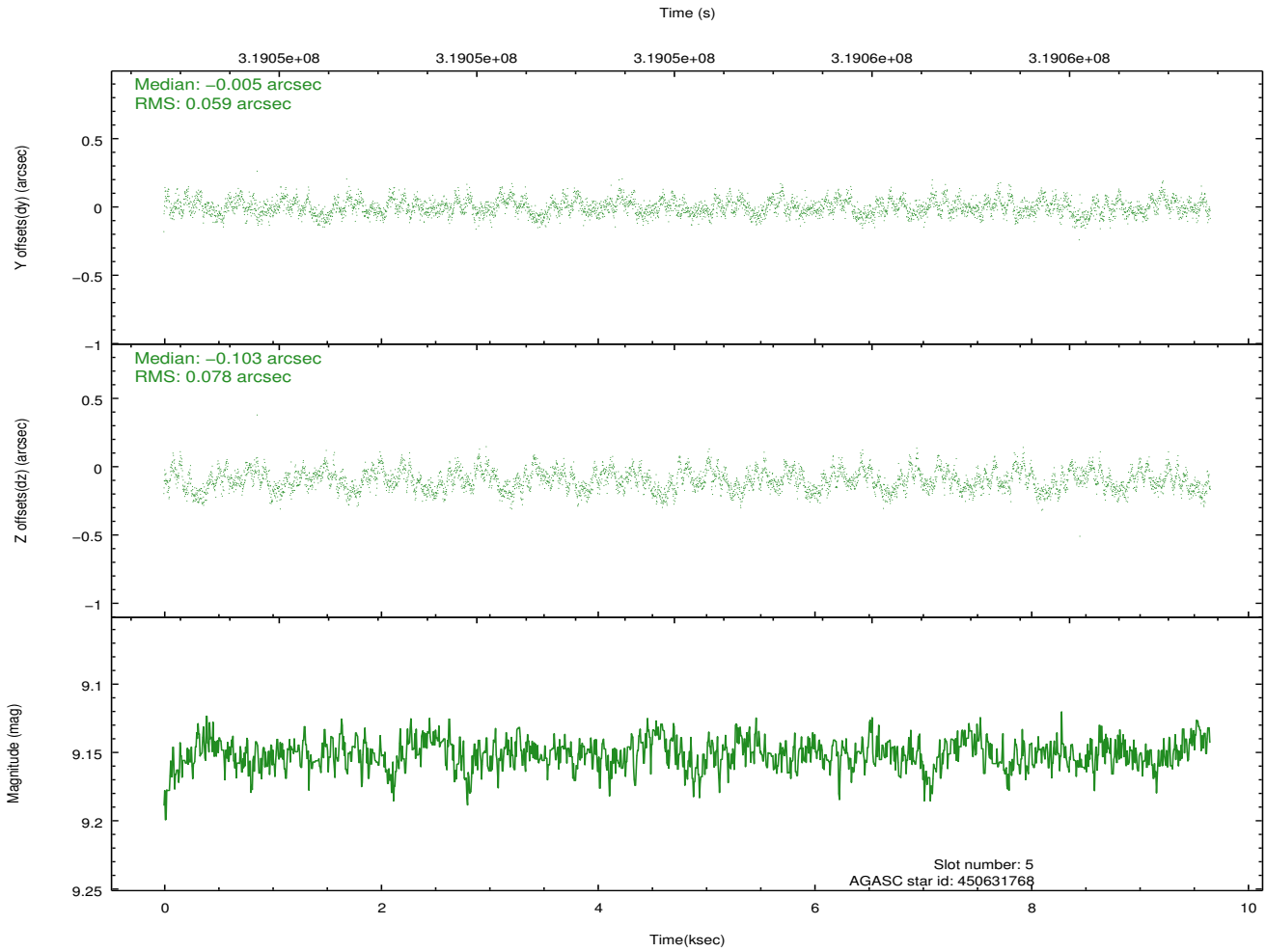
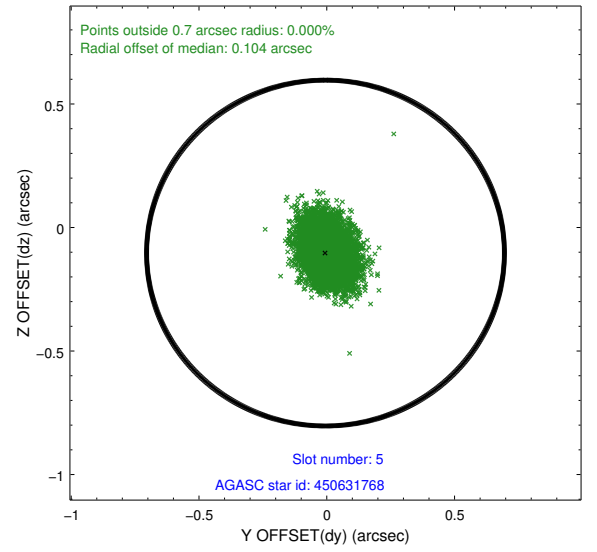
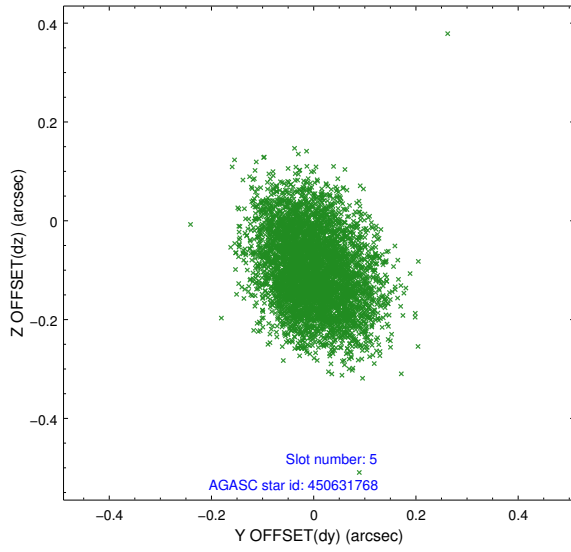
2.4.1 Slot 3



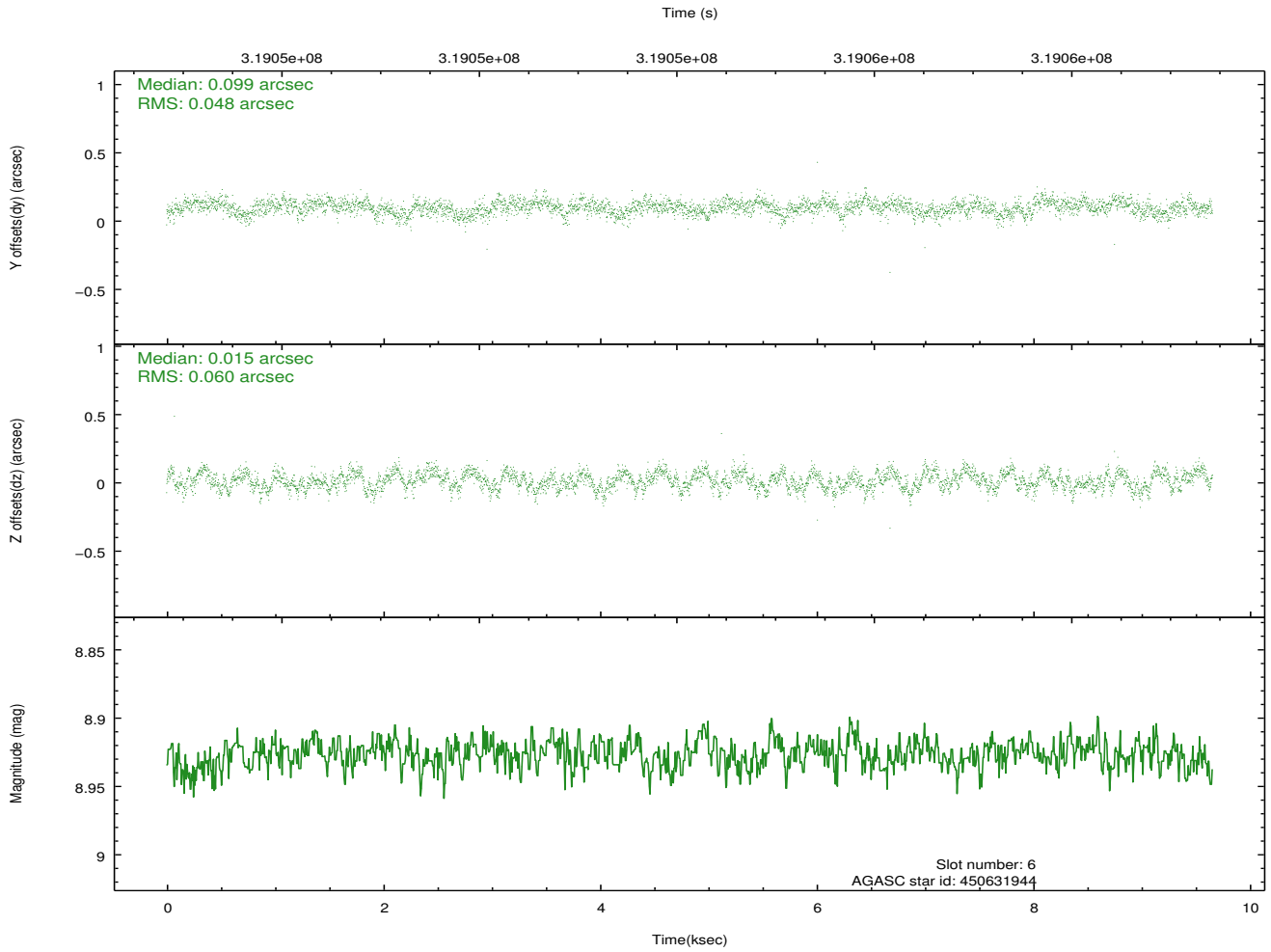
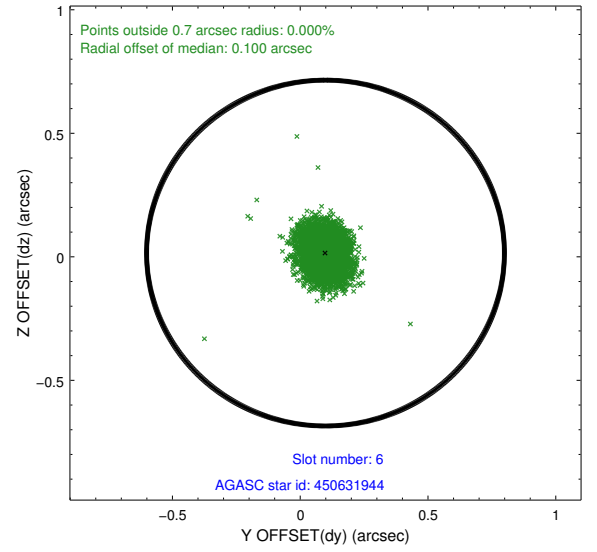
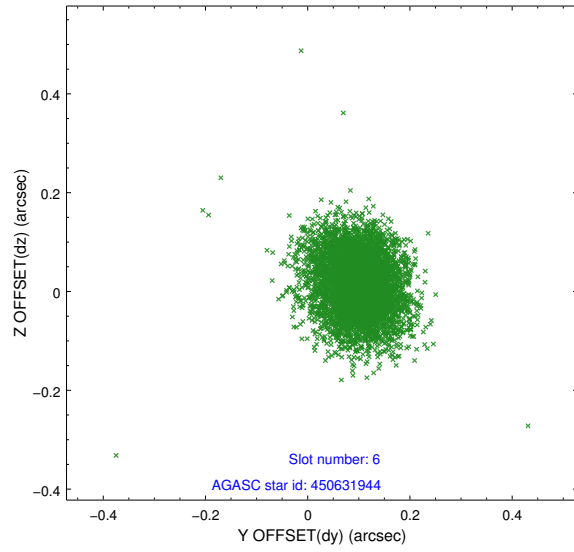
2.4.2 Slot 4



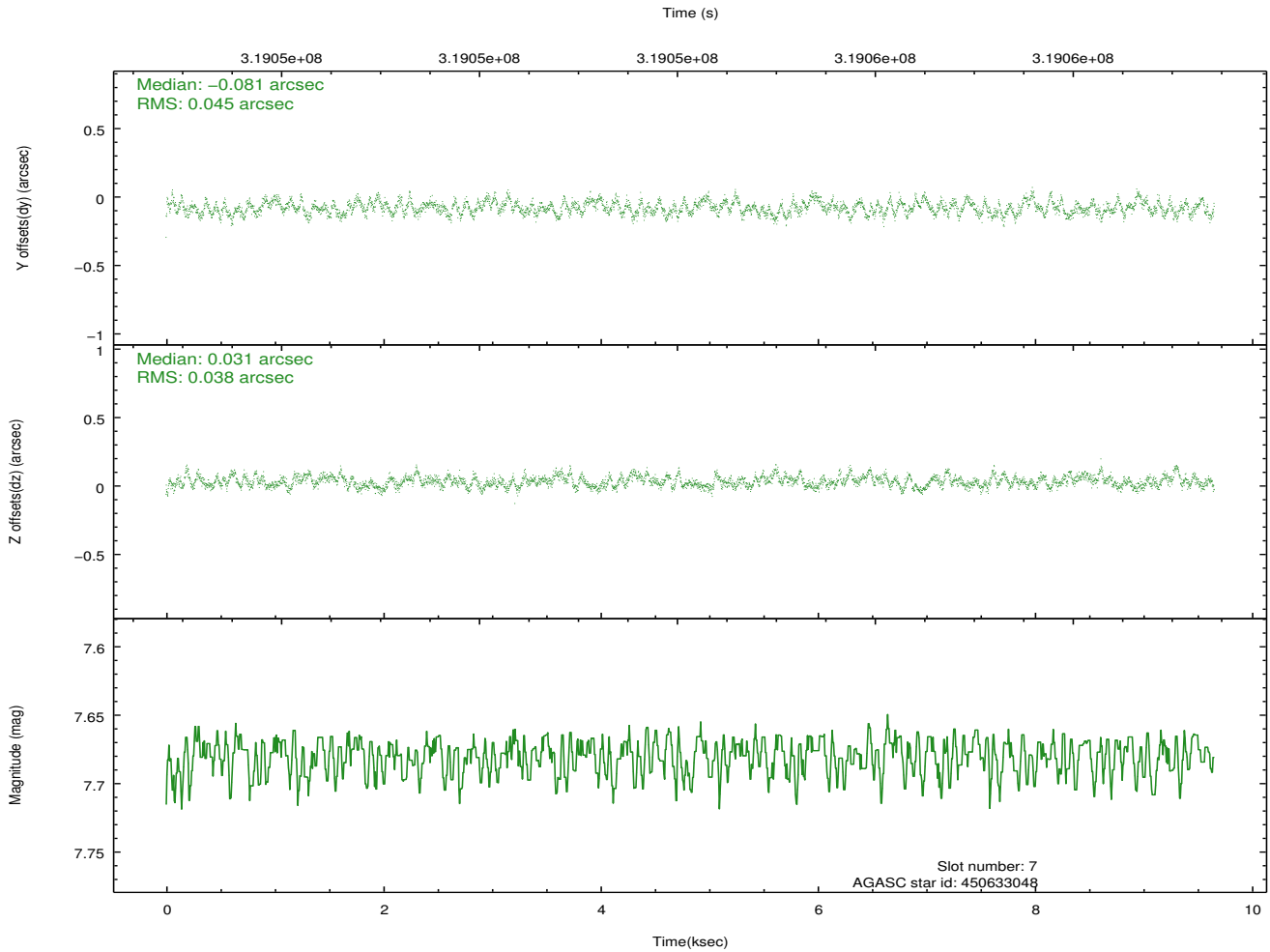
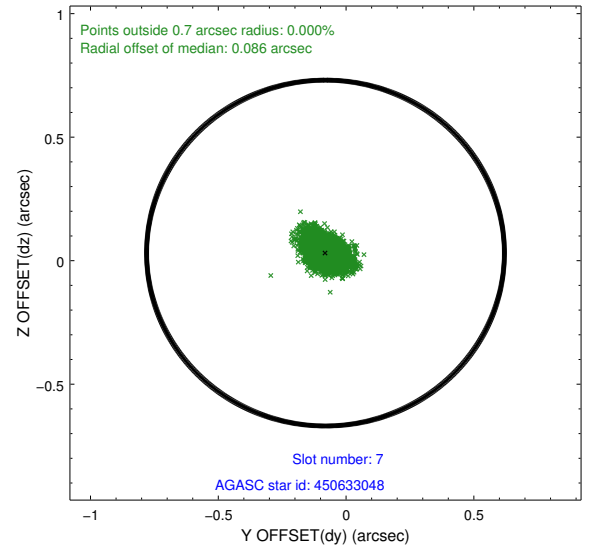
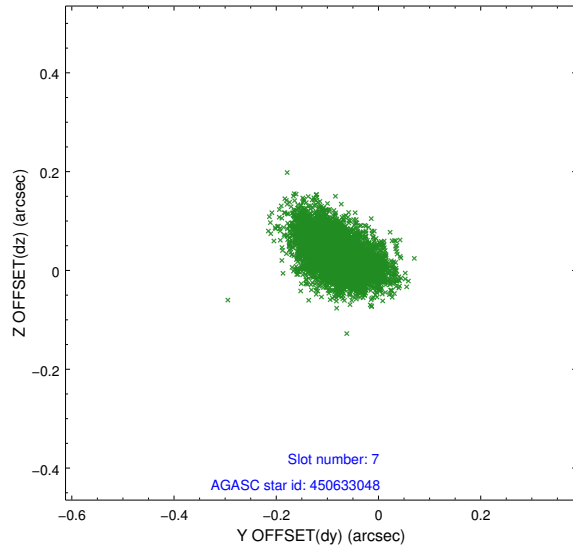
2.4.3 Slot 5



2.4.4 Slot 6

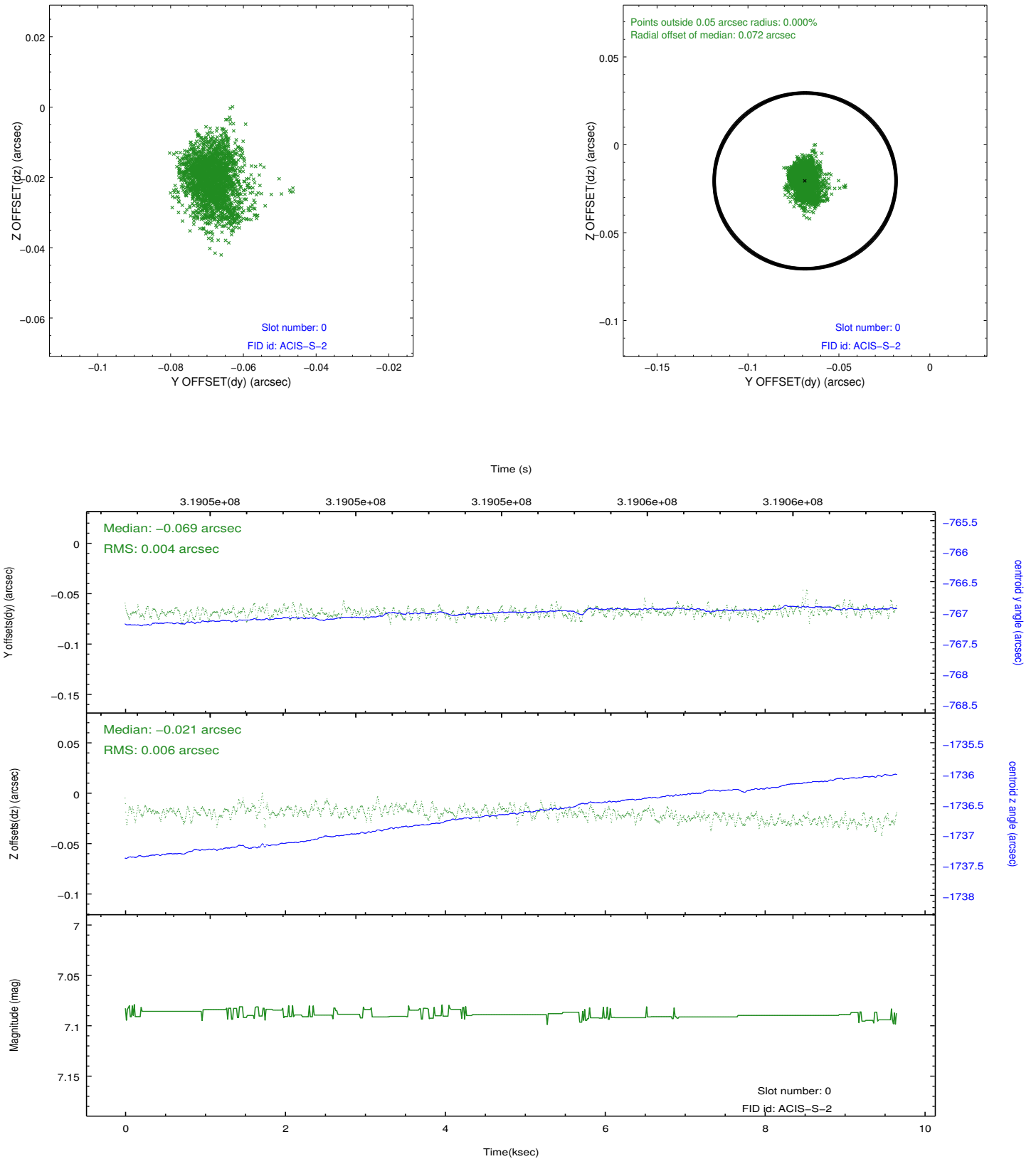


2.4.5 Slot 7

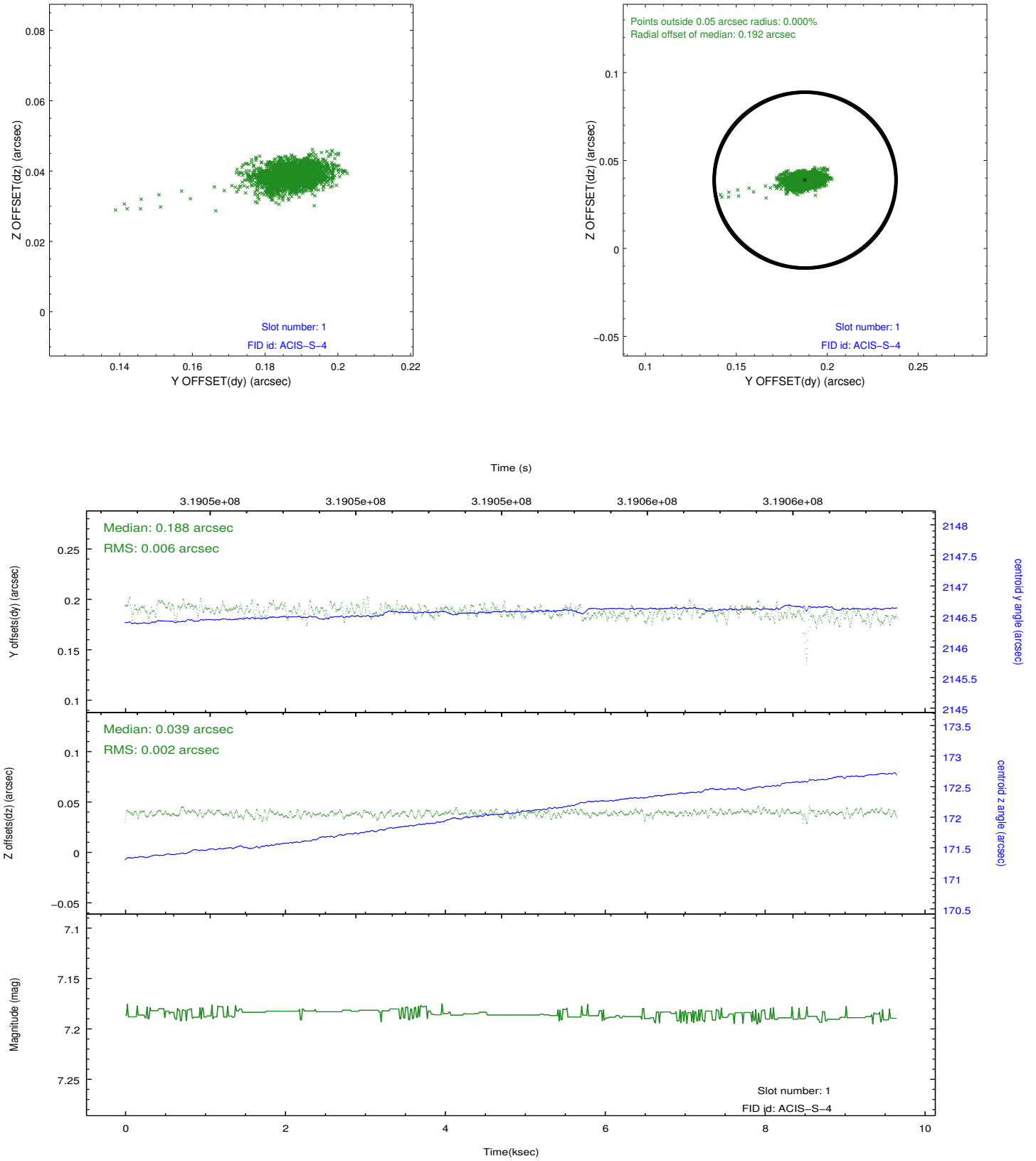


2.5 FID Slots

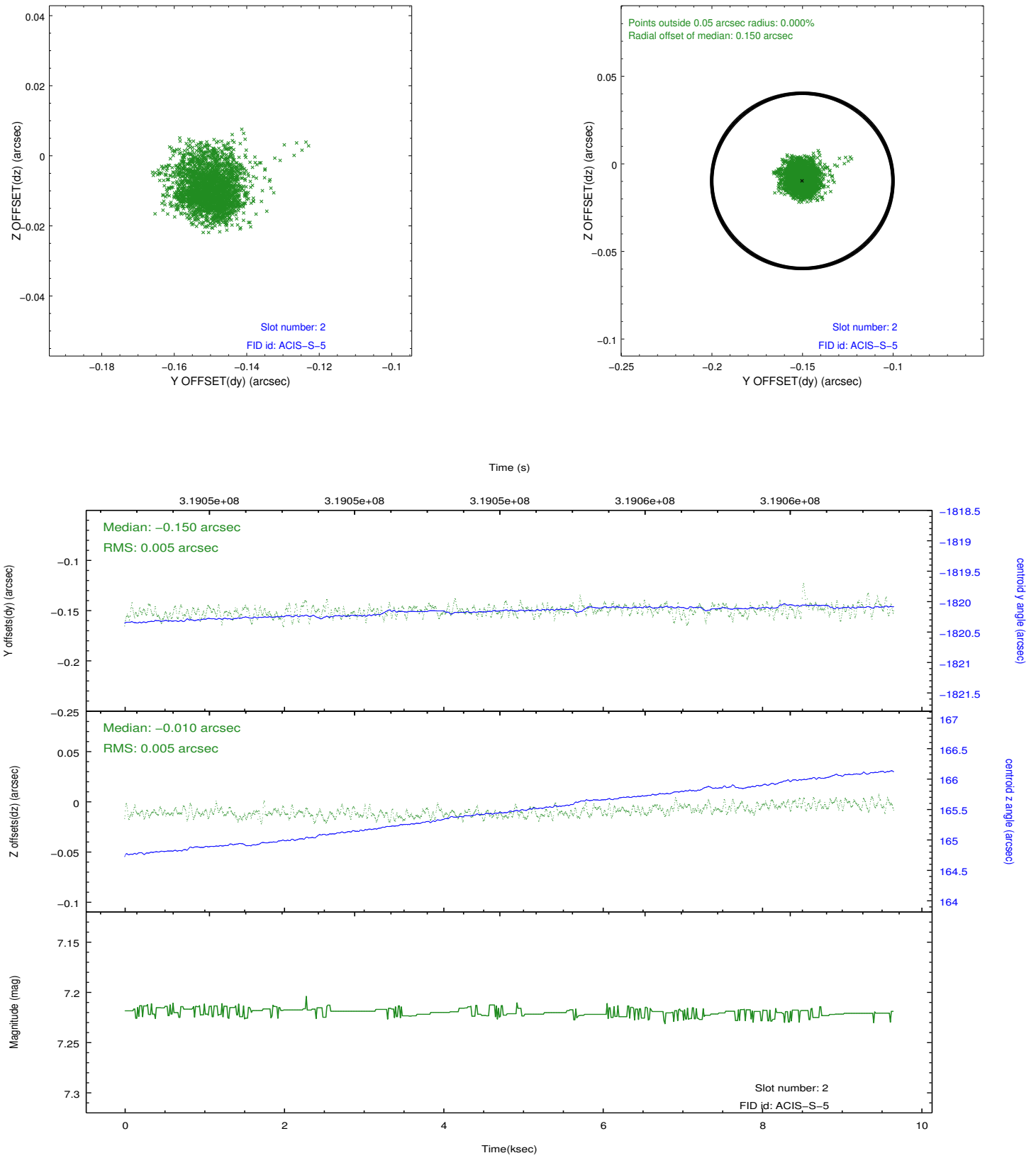
2.5.1 Slot 0



2.5.2 Slot 1



2.5.3 Slot 2



A Summary

A.1 Status

V&V Scientist	Jen Lauer
V&V Date (YYYY-MM-DD)	2012.05.10
V&V Edition	1
V&V Disposition and Status	OK
V&V Charge Time	9.64799996

A.2 Comments