

V&V Reference Report

L2 ASCDS Version : 8.4.4

Observation 9326 - L2 Version 2
Chandra X-Ray Center

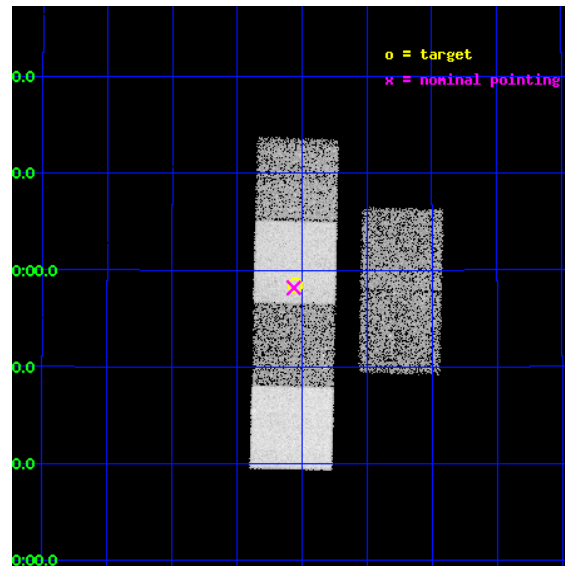
L2 Processing Date : May 7 2012

Contents

1	Front	2
2	OBI	3
2.1	OBI	3
2.1.1	Images	3
2.1.2	Bias	3
2.1.3	Parameters	4
2.1.4	Events	4
2.2	Compared Parameters	5
2.3	Aspect	6
2.4	Star Slots	9
2.4.1	Slot 3	9
2.4.2	Slot 4	10
2.4.3	Slot 5	11
2.4.4	Slot 6	12
2.4.5	Slot 7	13
2.5	FID Slots	14
2.5.1	Slot 0	14
2.5.2	Slot 1	15
2.5.3	Slot 2	16
A	Summary	17
A.1	Status	17
A.2	Comments	17

1 Front

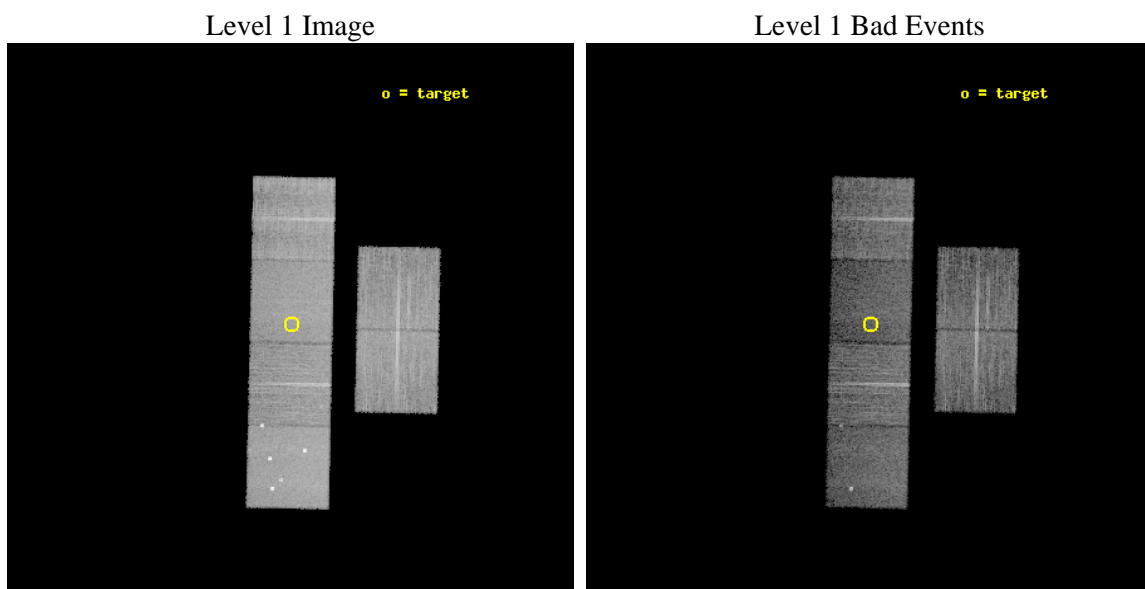
seq_num	701766	Sequence number
obs_id	9326	Observation id
title	A Chandra Survey of Nearby X-shaped Radio Galaxies	Proposal title
observer	Prof Christopher Reynolds	Principal investigator
object	J0516+2458 (3C136.1)	Source name
dtcycle	0	
cycle	P	events from which exps? Prim/Second/Both
ra_targ	79.012917	Observer's specified target RA [deg]
dec_targ	24.973611	Observer's specified target Dec [deg]
ra_nom	79.015818518421	Nominal RA [deg]
dec_nom	24.969593613578	Nominal Dec [deg]
roll_nom	271.21533585643	Nominal Roll [deg]
revision	2	Processing version of data
ontime	10040.546527565	Sum of GTIs [s]
livetime	9913.4070817412	Livetime [s]
ontime2	10043.828577816	Sum of GTIs [s]
ontime3	10043.664417803	Sum of GTIs [s]
ontime5	10040.505487561	Sum of GTIs [s]
ontime6	10040.464457452	Sum of GTIs [s]
ontime7	10040.546527565	Sum of GTIs [s]
ontime8	10043.6233778	Sum of GTIs [s]
l2events	115876	Number of level 2 events



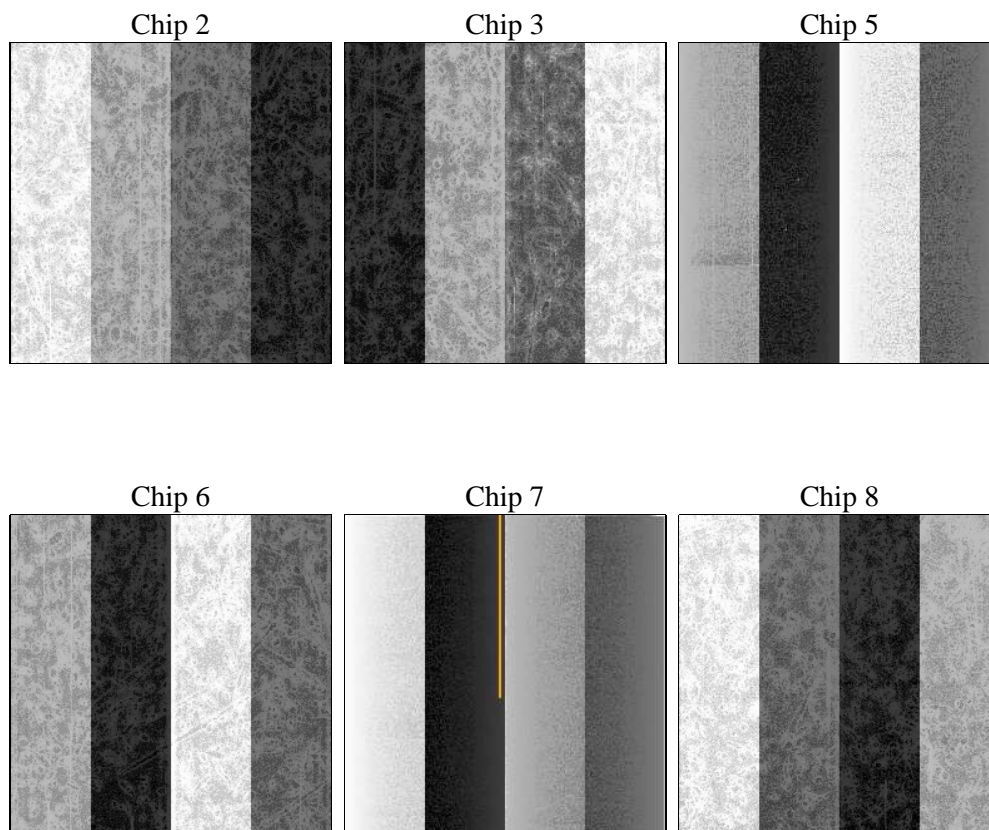
2 OBI

2.1 OBI

2.1.1 Images



2.1.2 Bias



2.1.3 Parameters

obi_num	0	Obi number	sched_exp_time	10000.000000	[s] Scheduled observation exposure time
ascdsver	8.4.4	Processing system revision	ontime	10040.546527565	Sum of GTIs [s]
caldsver	4.4.9	 	ontime2	10043.828577816	Sum of GTIs [s]
date	2012-05-08T01:42:50	Date and time of file creation	ontime3	10043.664417803	Sum of GTIs [s]
revision	2	Processing version of data	ontime5	10040.505487561	Sum of GTIs [s]
			ontime6	10040.464457452	Sum of GTIs [s]
			ontime7	10040.546527565	Sum of GTIs [s]
			ontime8	10043.6233778	Sum of GTIs [s]
			l1events	542346	Number of level 1 events

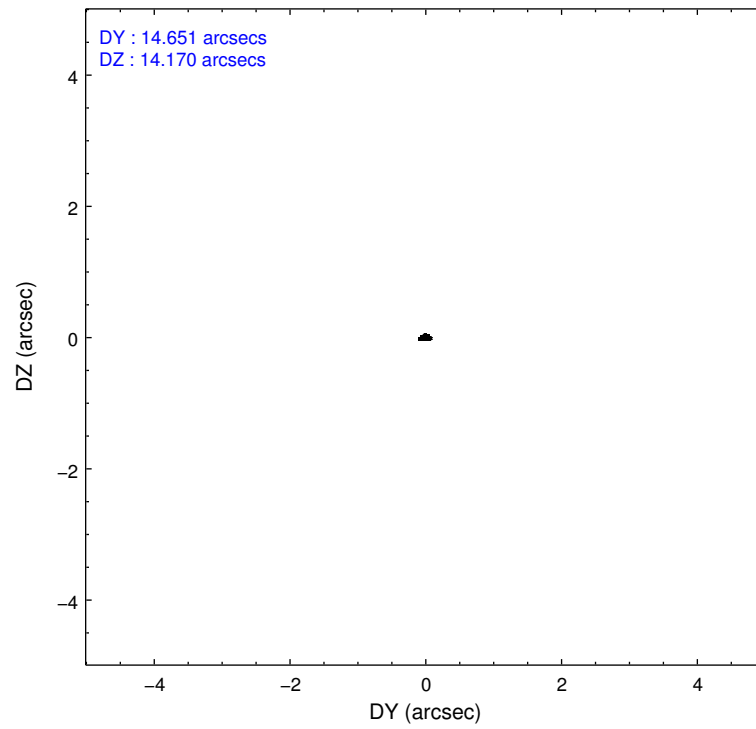
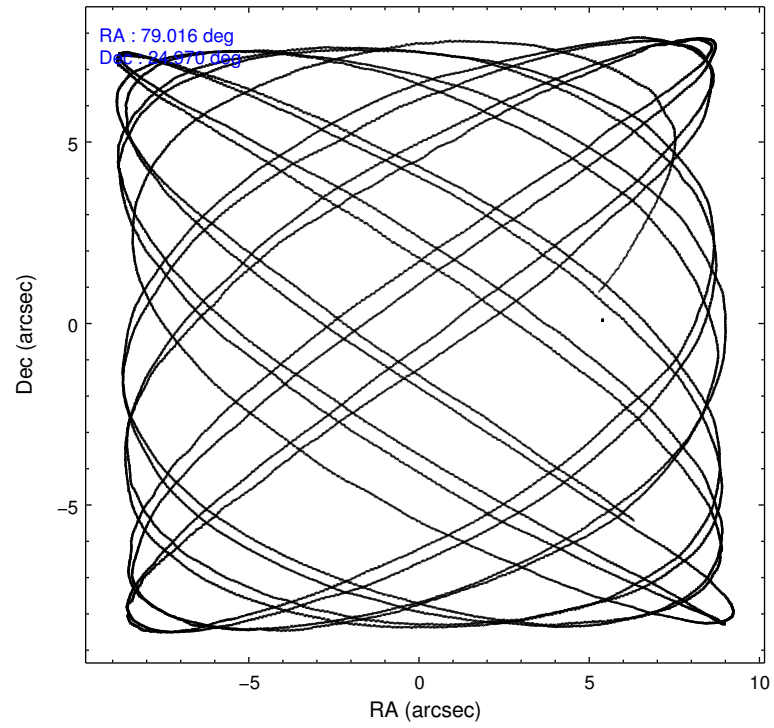
2.1.4 Events

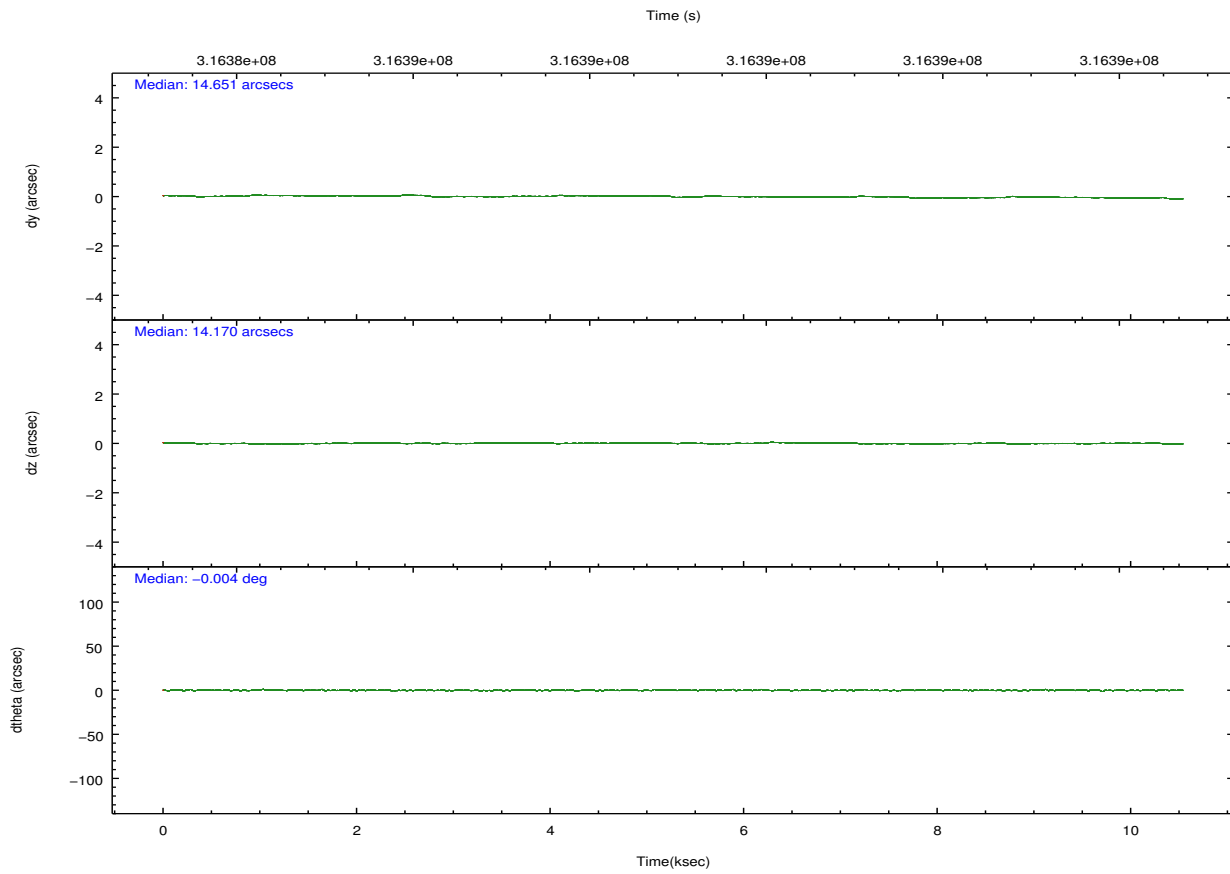
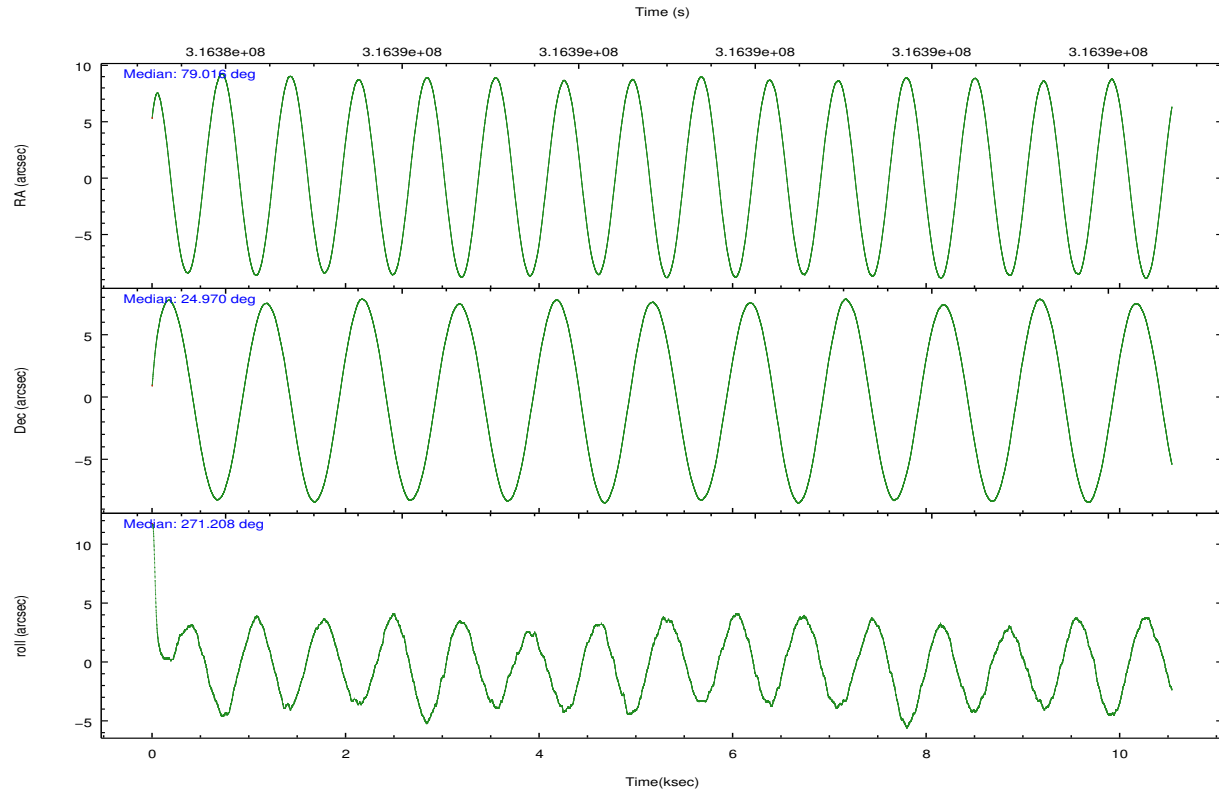
	ccd 2	ccd 3	ccd 5	ccd 6	ccd 7	ccd 8		ccd 2	ccd 3	ccd 5	ccd 6	ccd 7	ccd 8
level 1 events	84222	76379	115773	80411	87834	97727	grade 0 events	2752	2500	10455	2835	3581	6608
rejected events	76488	69263	55846	72241	48362	73820		3%	3%	9%	3%	4%	6%
rejected %	90%	90%	48%	89%	55%	75%	grade 1 events	50	40	364	33	105	73
								0%	0%	0%	0%	0%	0%
							grade 2 events	1918	1548	17151	1757	8029	5732
								2%	2%	14%	2%	9%	5%
							grade 3 events	829	792	2086	917	3638	2385
								0%	1%	1%	1%	4%	2%
							grade 4 events	831	834	1922	840	3505	2354
								0%	1%	1%	1%	3%	2%
							grade 5 events	2655	3247	8350	3091	9217	4629
								3%	4%	7%	3%	10%	4%
							grade 6 events	1407	1448	28324	1823	20728	6831
								1%	1%	24%	2%	23%	6%
							grade 7 events	73780	65970	47121	69115	39031	69115
								87%	86%	40%	85%	44%	70%

2.2 Compared Parameters

Parameter	Planned	Actual	Parameter	Planned	Actual
Instrument	ACIS	ACIS	Obspar format version number	7	7
Detector	ACIS-235678	ACIS-235678	Obspar file type	PREDICTED	ACTUAL
Grating	NONE	NONE	Obspar update status	NONE	UPDATED
Data mode	FAINT	FAINT	CCD I0 on	N	N
Observation mode	POINTING	POINTING	CCD I1 on	N	N
[deg] Pointing RA	78.999830	79.01581851842063	CCD I2 on	O2	Y
[deg] Pointing Dec	24.992728	24.9695936135785	CCD I3 on	O4	Y
[deg] Pointing Roll	271.065449	271.2153358564321	CCD S0 on	N	N
[mm] SIM focus pos	-0.684267	-0.6828225247311905	CCD S1 on	O1	Y
[mm] SIM defocus	0	0.001444936568705701	CCD S2 on	O5	Y
[mm] SIM translation stage pos	-190.132523	-190.1425803651734	CCD S3 on	Y	Y
[mm] SIM translation stage offset	0	0.01005778216563158	CCD S4 on	O3	Y
[s] Observation start time (MET)	316384220.184000	316383037.14407	CCD S5 on	N	N
Observation start date	2008-01-10T20:29:15	2008-01-10T20:10:37	Number of optional ACIS chips dropped	0	0
[s] Observation end time (MET)	316394220.184000	316394842.58214	On-chip summing requested	N	N
Observation end date	2008-01-10T23:15:55	2008-01-10T23:27:22	Subarray requested	NONE	NONE
Read mode	TIMED	TIMED	Alternating exposures requested	N	N
			[s] Primary exposure time	0.000000	3.2

2.3 Aspect



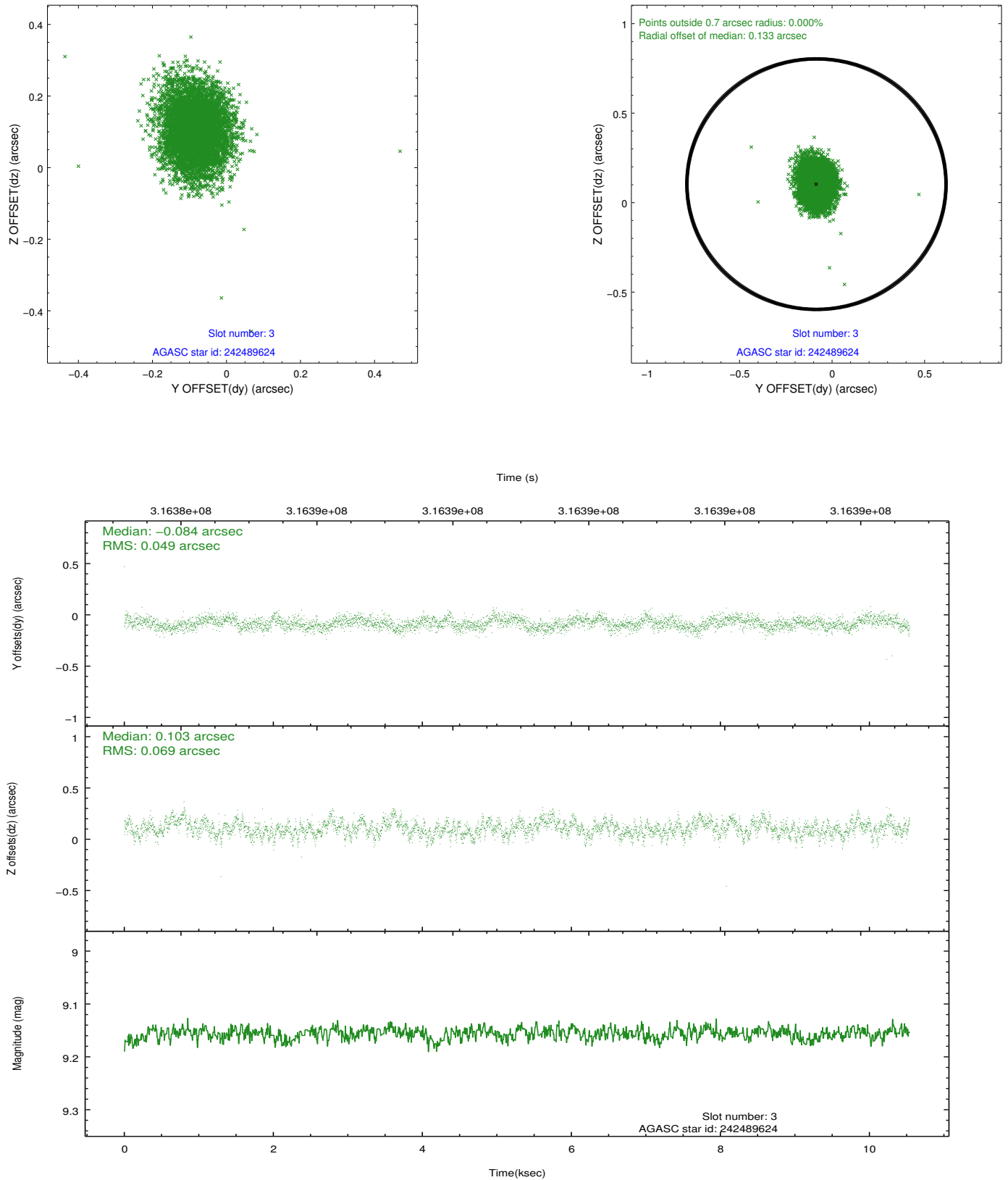


Slot Statistics

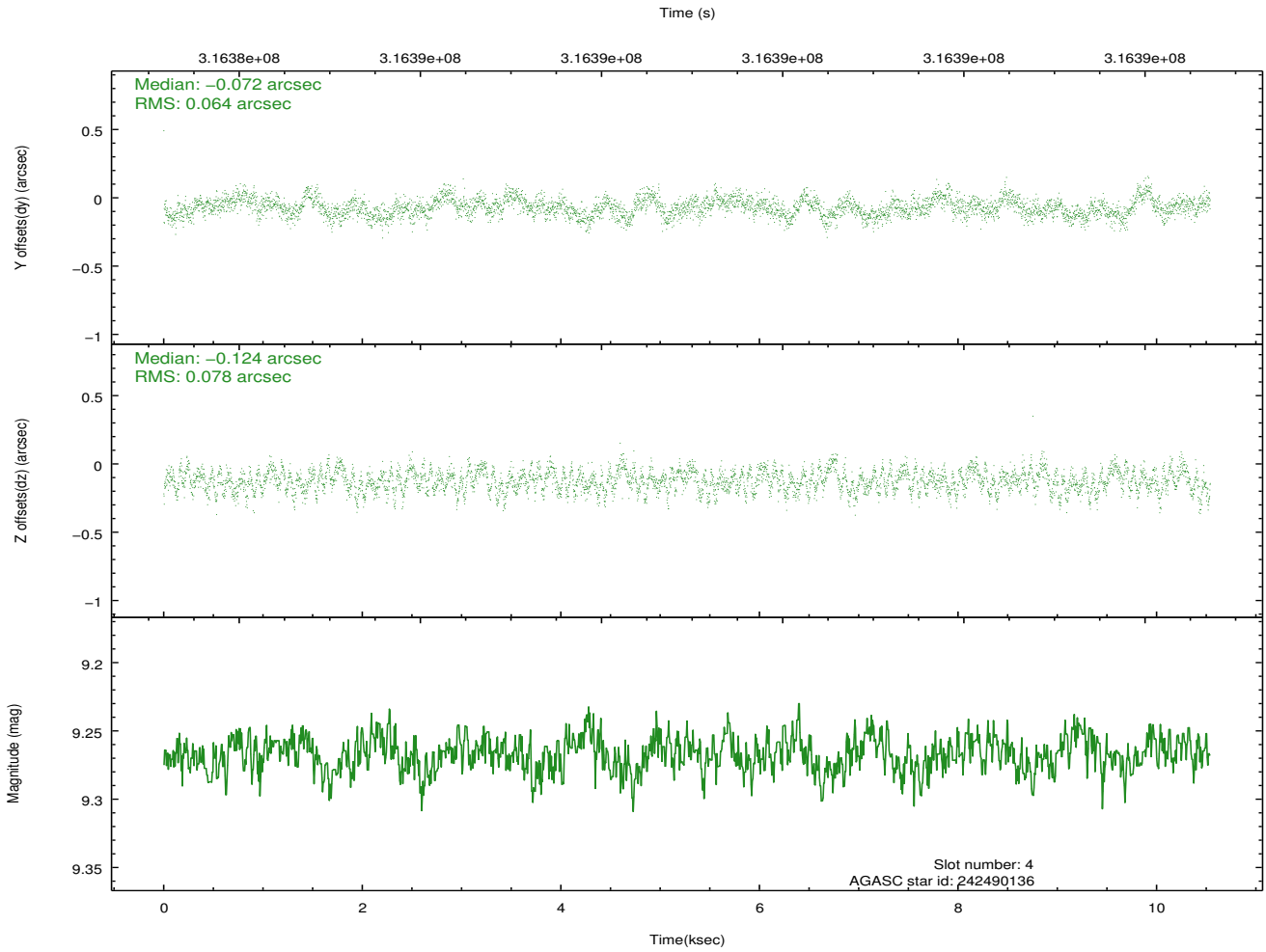
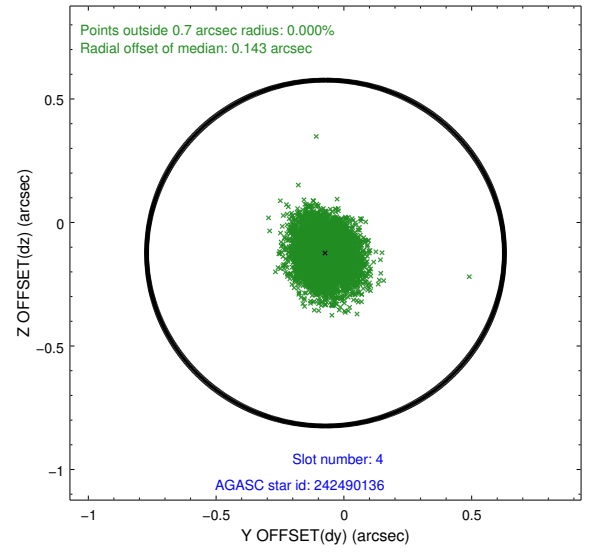
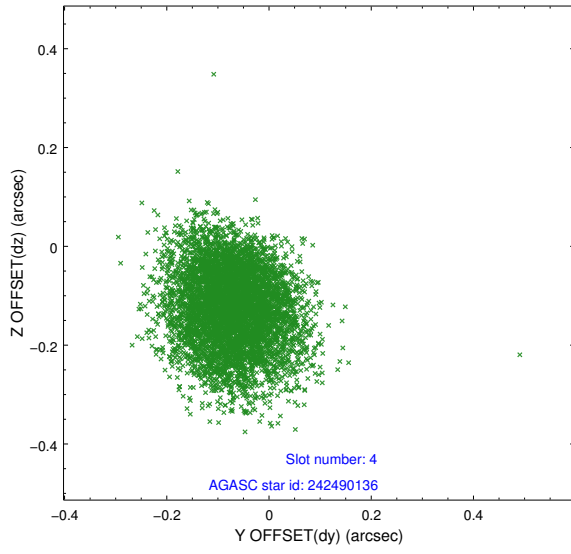
slot	status	id	mag	n_pts	med_dy	med_dz	dr1	dr2	ra	dec	mean_y	mean_z
0	FID	ACIS-S-2	7.10	2570	-0.086	-0.062	0.007	0.011	0.000000	0.000000	-767.70	-1735.54
1	FID	ACIS-S-4	7.19	2570	0.215	0.058	0.006	0.010	0.000000	0.000000	2145.66	172.55
2	FID	ACIS-S-5	7.22	2570	-0.160	0.013	0.007	0.012	0.000000	0.000000	-1819.97	166.74
3	GUIDE	242489624	9.16	5133	-0.084	0.103	0.088	0.145	78.564635	25.248163	-947.34	-1399.42
4	GUIDE	242490136	9.27	5135	-0.072	-0.124	0.108	0.171	78.472444	24.891335	330.29	-1728.88
5	GUIDE	242492528	9.26	5134	-0.025	-0.093	0.109	0.171	78.416090	25.270021	-1036.65	-1881.72
6	GUIDE	242496760	9.42	5133	0.204	0.068	0.105	0.174	78.831539	24.516102	1706.09	-582.81
7	GUIDE	242624352	8.97	5136	-0.026	0.045	0.084	0.135	79.587488	24.656537	1242.57	1900.43

2.4 Star Slots

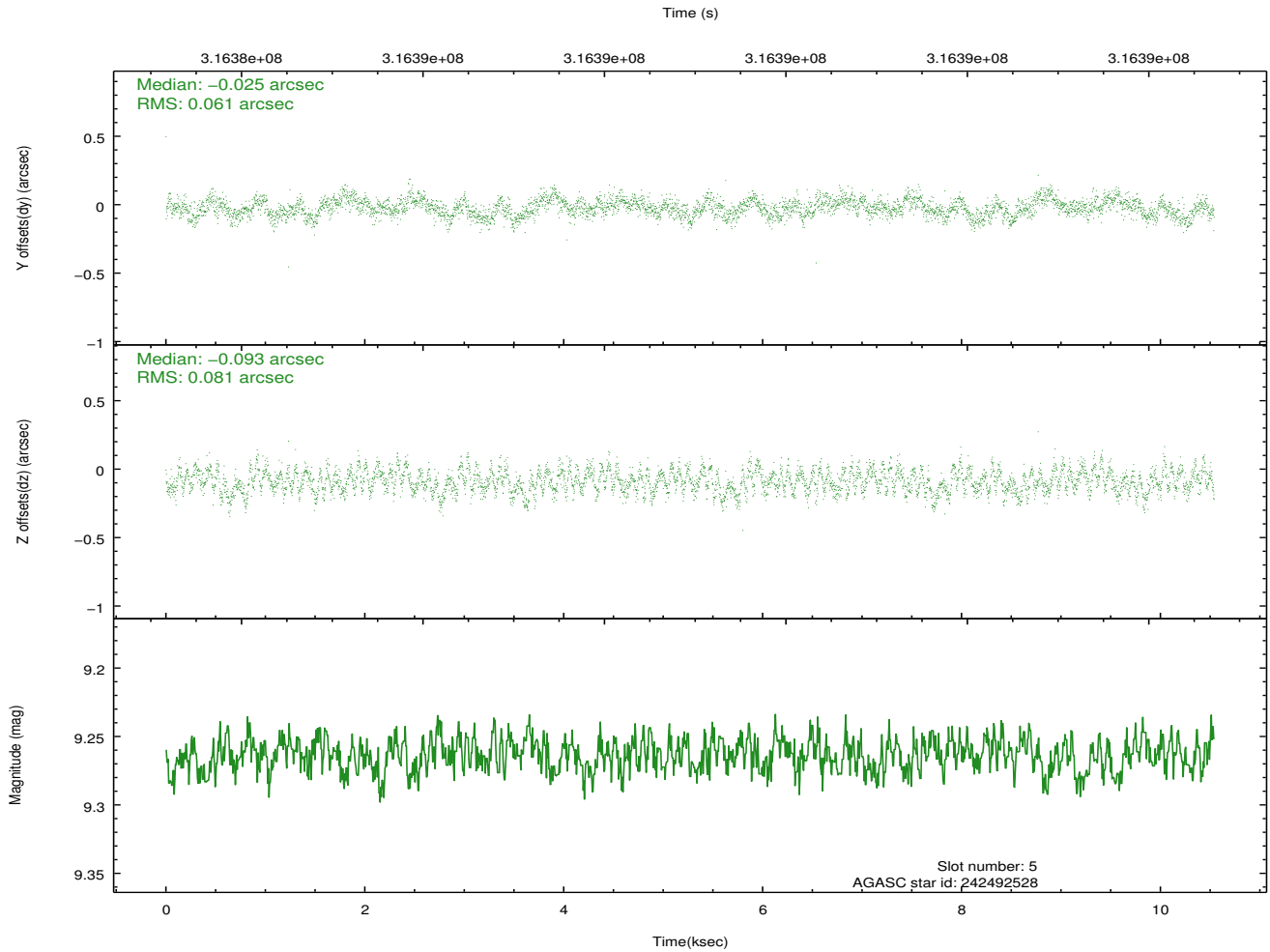
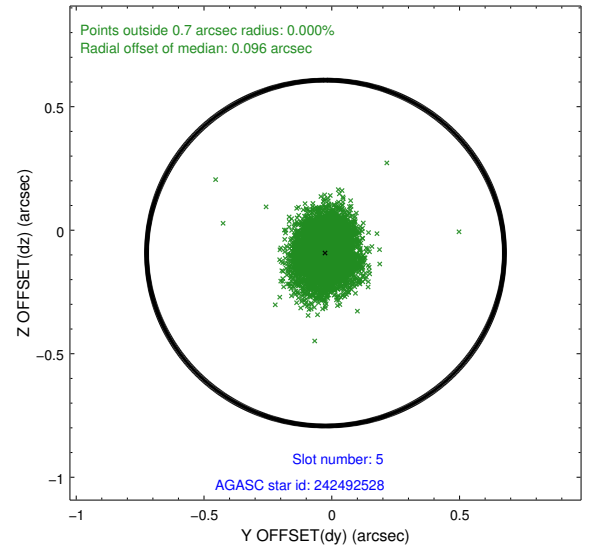
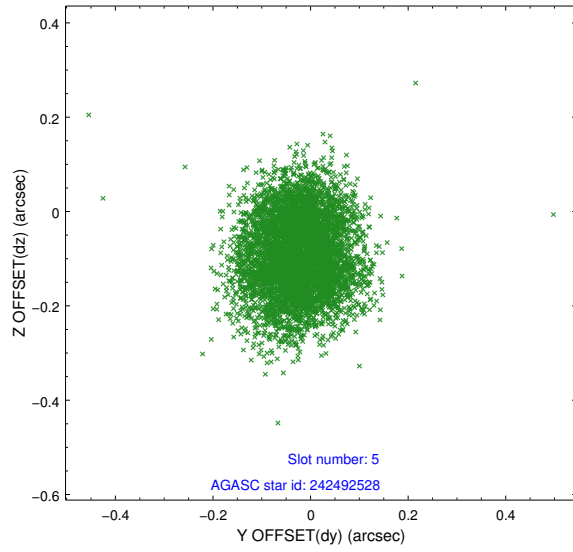
2.4.1 Slot 3



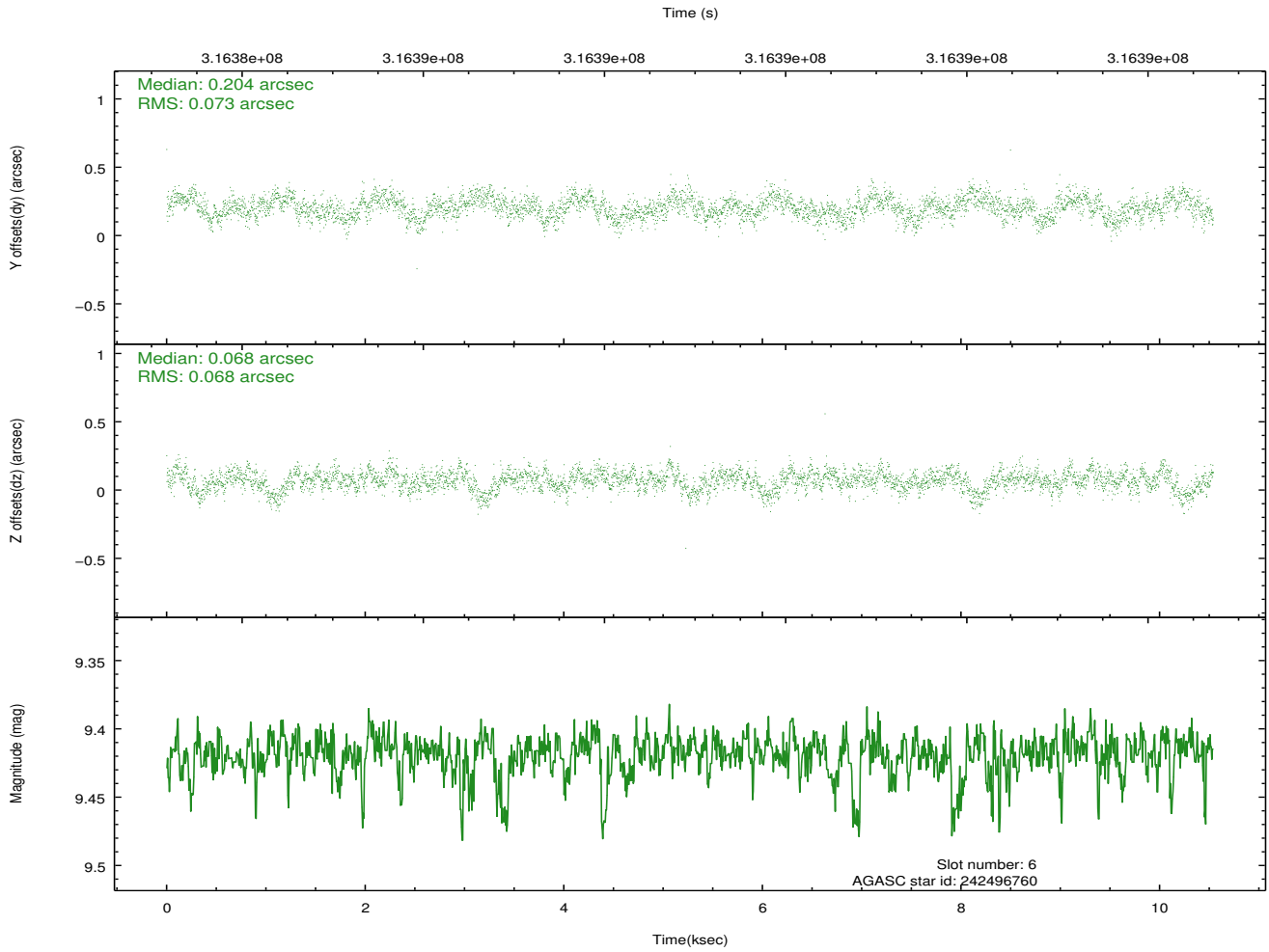
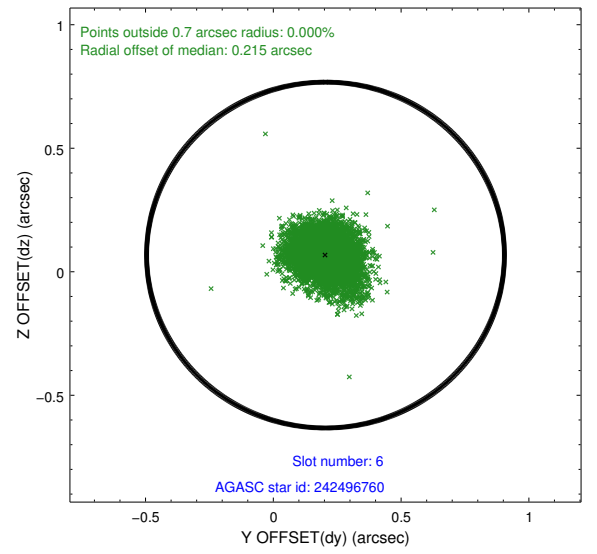
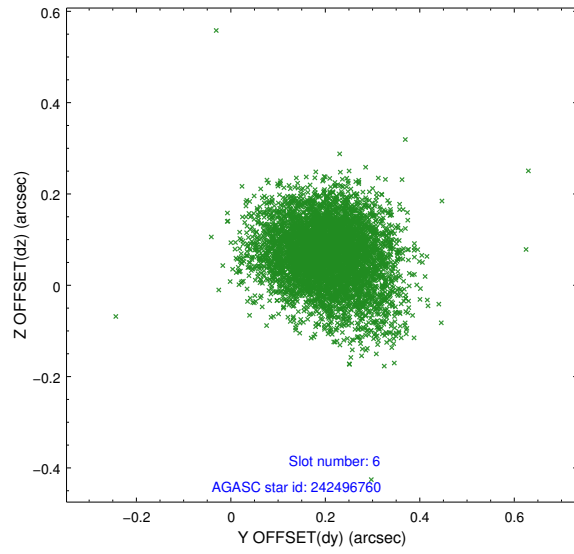
2.4.2 Slot 4



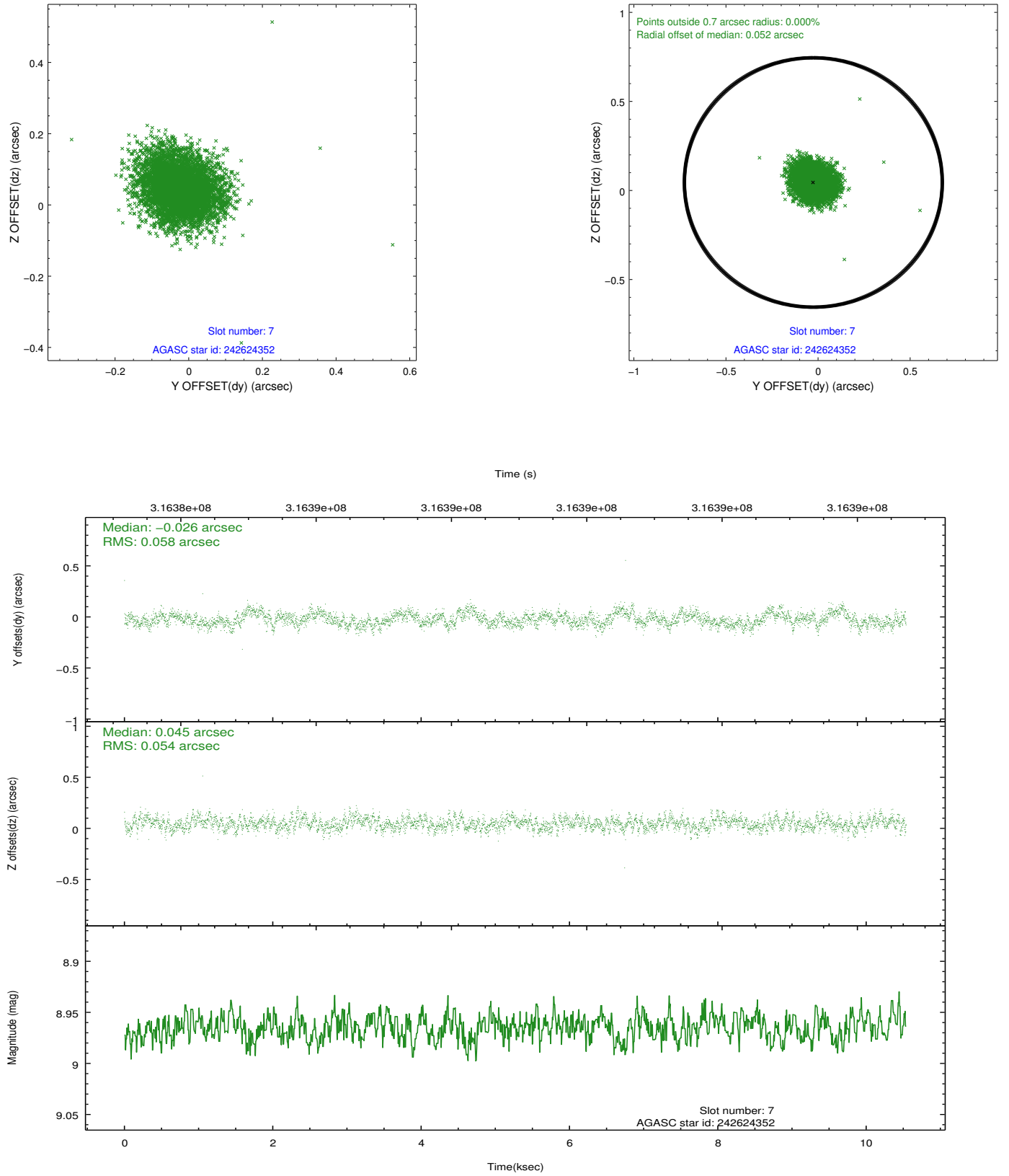
2.4.3 Slot 5



2.4.4 Slot 6

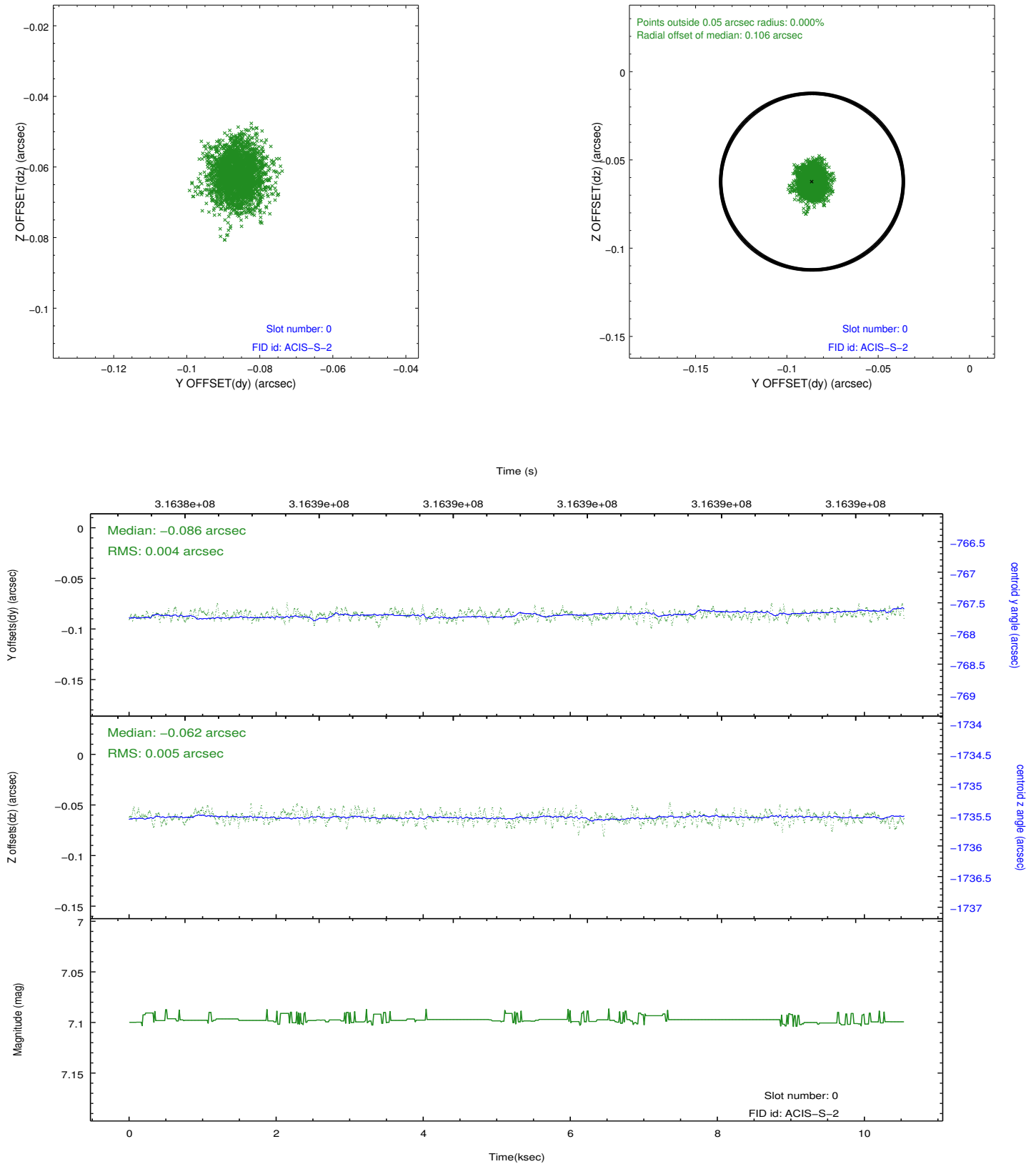


2.4.5 Slot 7

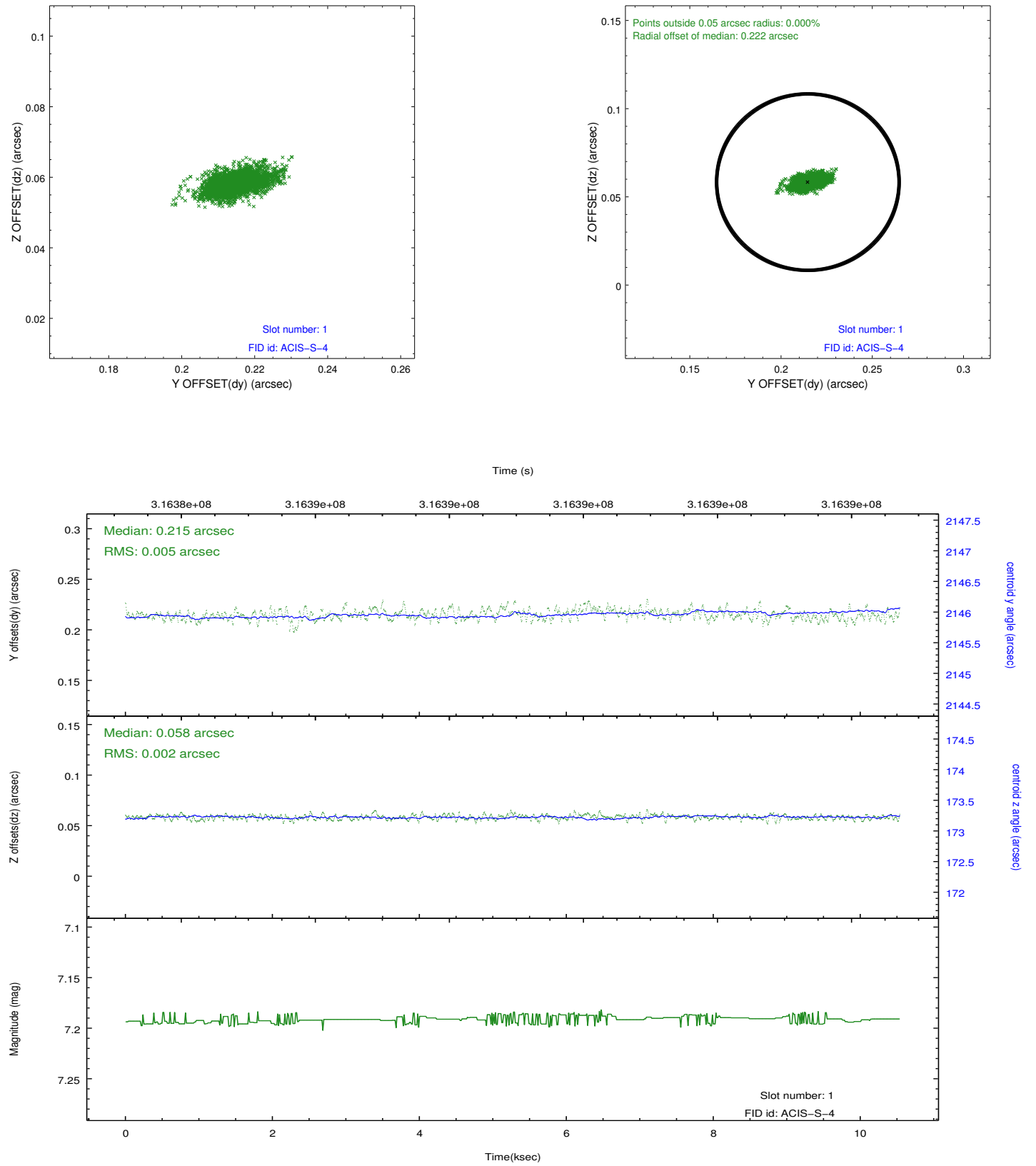


2.5 FID Slots

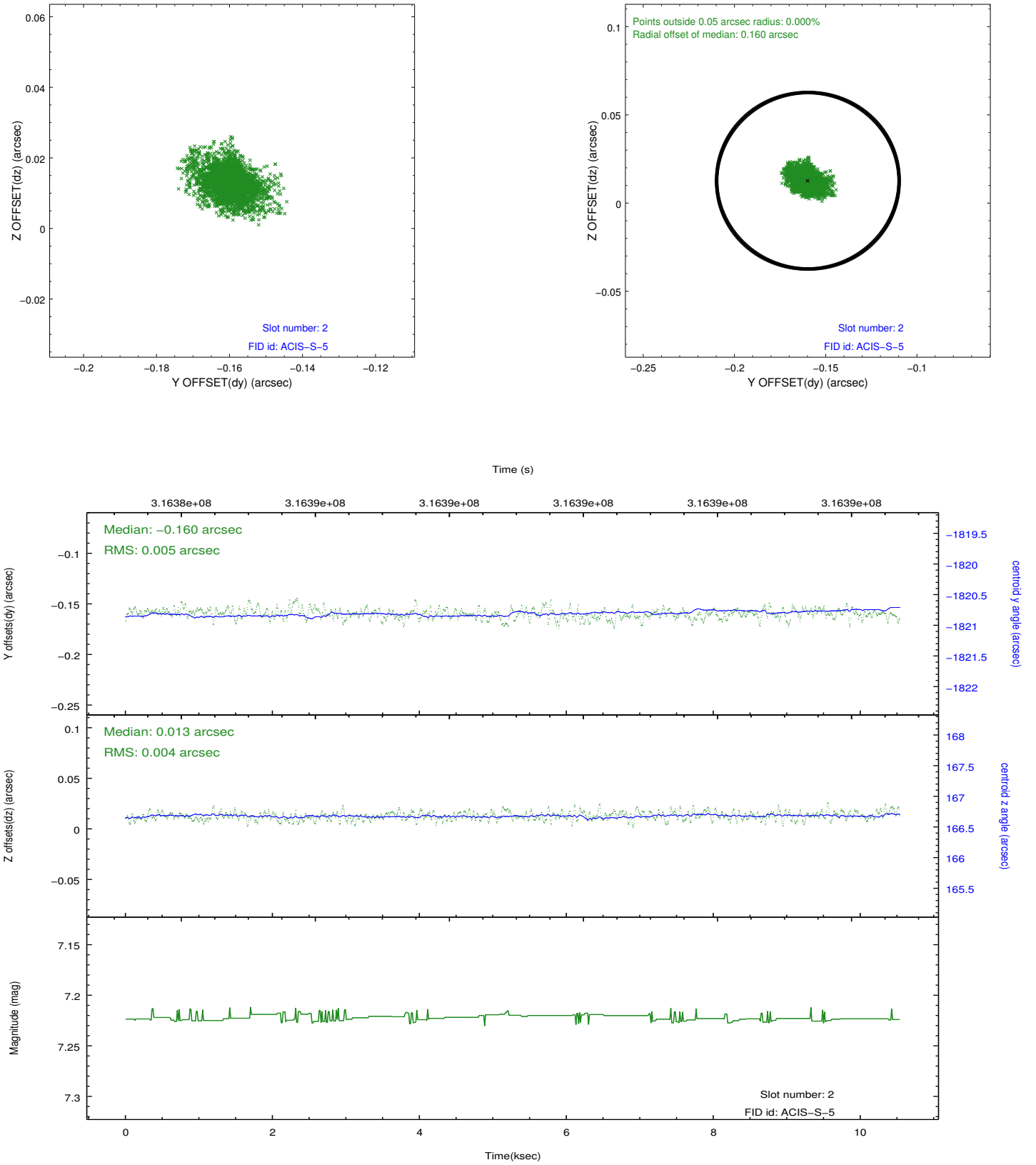
2.5.1 Slot 0



2.5.2 Slot 1



2.5.3 Slot 2



A Summary

A.1 Status

V&V Scientist	Joy Nichols
V&V Date (YYYY-MM-DD)	2012.05.09
V&V Edition	1
V&V Disposition and Status	OK
V&V Charge Time	10.0415589

A.2 Comments