

V&V Reference Report

L2 ASCDS Version : 8.4.4

Observation 9322 - L2 Version 2
Chandra X-Ray Center

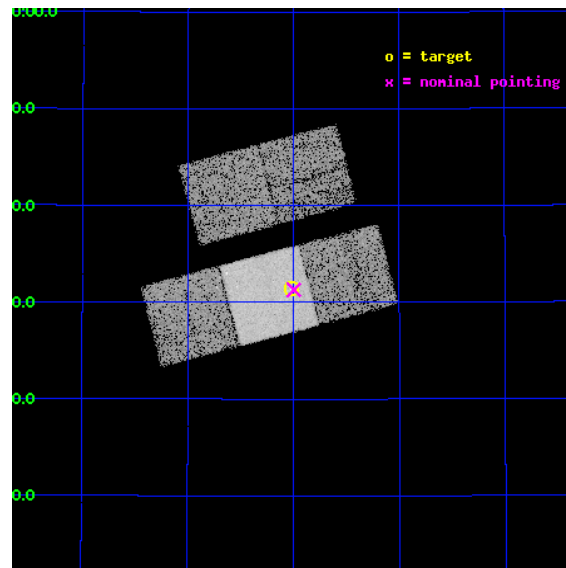
L2 Processing Date : May 9 2012

Contents

1	Front	2
2	OBI	3
2.1	OBI	3
2.1.1	Images	3
2.1.2	Bias	3
2.1.3	Parameters	4
2.1.4	Events	4
2.2	Compared Parameters	5
2.3	Aspect	6
2.4	Star Slots	9
2.4.1	Slot 3	9
2.4.2	Slot 4	10
2.4.3	Slot 5	11
2.4.4	Slot 6	12
2.4.5	Slot 7	13
2.5	FID Slots	14
2.5.1	Slot 0	14
2.5.2	Slot 1	15
2.5.3	Slot 2	16
A	Summary	17
A.1	Status	17
A.2	Comments	17

1 Front

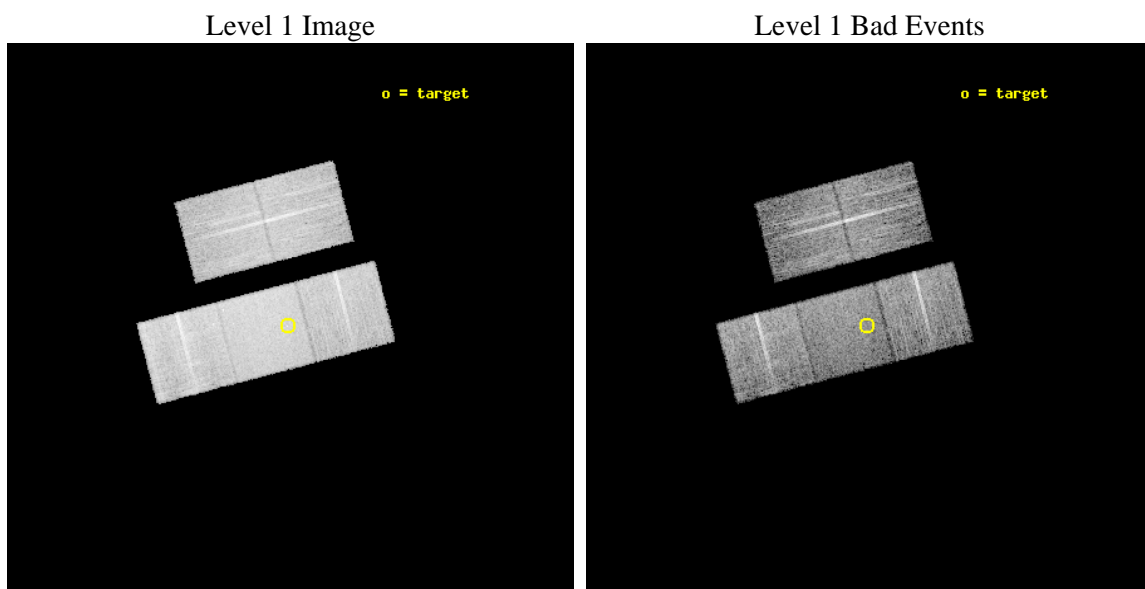
seq_num	701762	Sequence number
obs_id	9322	Observation id
title	Deconstructing the Accretion Disk Wind in Quasars	Proposal title
observer	Dr. Gordon Richards	Principal investigator
object	SDSS J1004+4231	Source name
dtcycle	0	
cycle	P	events from which exps? Prim/Second/Both
ra_targ	151.005417	Observer's specified target RA [deg]
dec_targ	42.523056	Observer's specified target Dec [deg]
ra_nom	150.99917074144	Nominal RA [deg]
dec_nom	42.521625912701	Nominal Dec [deg]
roll_nom	165.35983602859	Nominal Roll [deg]
revision	2	Processing version of data
ontime	7731.4000594616	Sum of GTIs [s]
livetime	7630.3836259108	Livetime [s]
ontime2	7731.4000594616	Sum of GTIs [s]
ontime3	7731.4000594616	Sum of GTIs [s]
ontime6	7731.4000594616	Sum of GTIs [s]
ontime7	7731.4000594616	Sum of GTIs [s]
ontime8	7731.4000594616	Sum of GTIs [s]
l2events	74118	Number of level 2 events



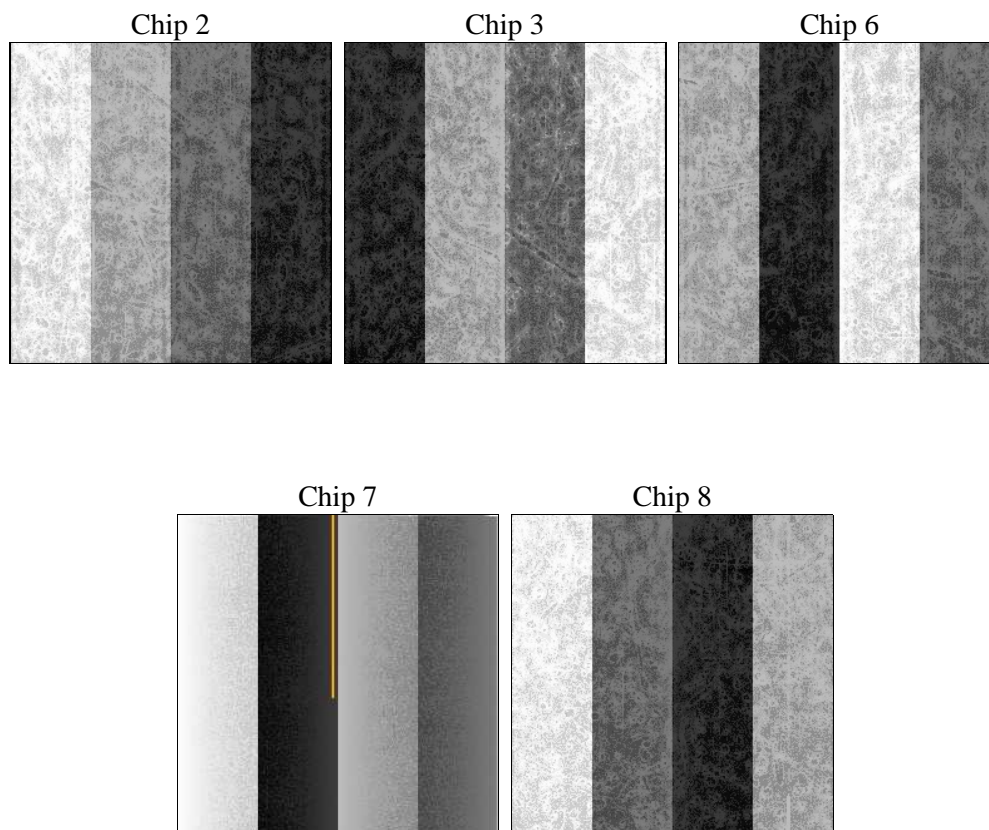
2 OBI

2.1 OBI

2.1.1 Images



2.1.2 Bias



2.1.3 Parameters

obi_num	1	Obi number	sched_exp_time	7700.000000	[s] Scheduled observation exposure time
ascdsver	8.4.4	Processing system revision	ontime	7731.4000594616	Sum of GTIs [s]
caldsver	4.4.9	 	ontime2	7731.4000594616	Sum of GTIs [s]
date	2012-05-09T18:26:46	Date and time of file creation	ontime3	7731.4000594616	Sum of GTIs [s]
revision	2	Processing version of data	ontime6	7731.4000594616	Sum of GTIs [s]
			ontime7	7731.4000594616	Sum of GTIs [s]
			ontime8	7731.4000594616	Sum of GTIs [s]
			l1events	422182	Number of level 1 events

2.1.4 Events

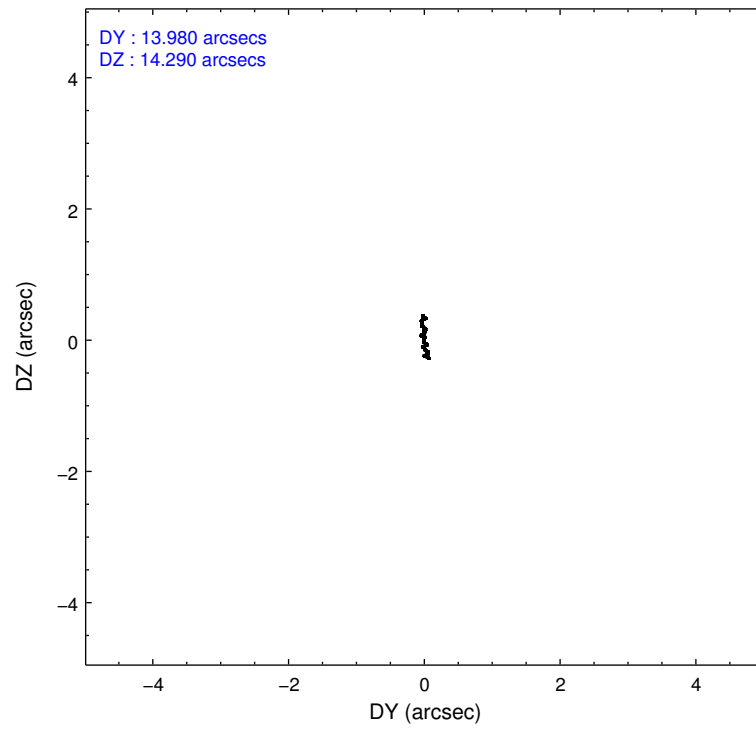
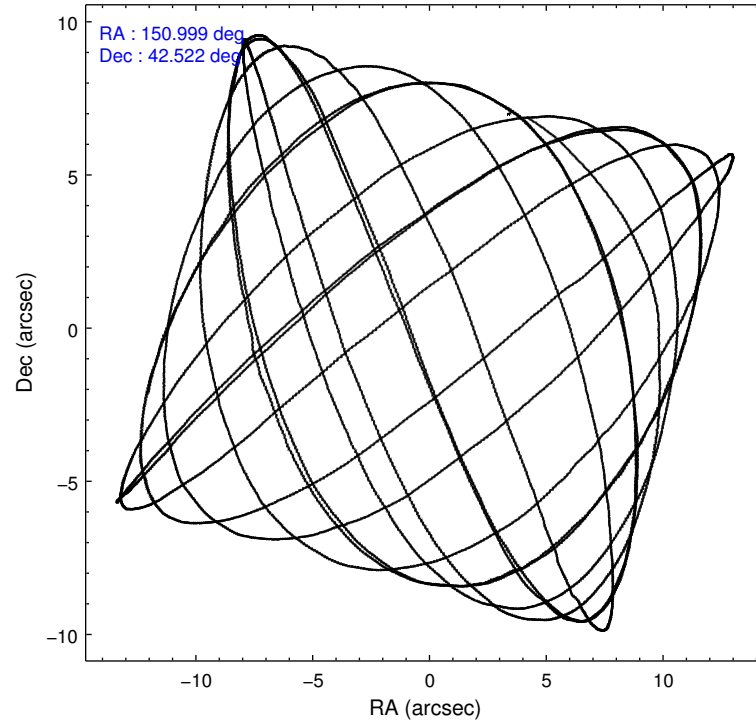
	ccd 2	ccd 3	ccd 6	ccd 7	ccd 8
level 1 events	74689	70435	77071	103291	96696
rejected events	66289	61626	67981	60177	74303
rejected %	88%	87%	88%	58%	76%

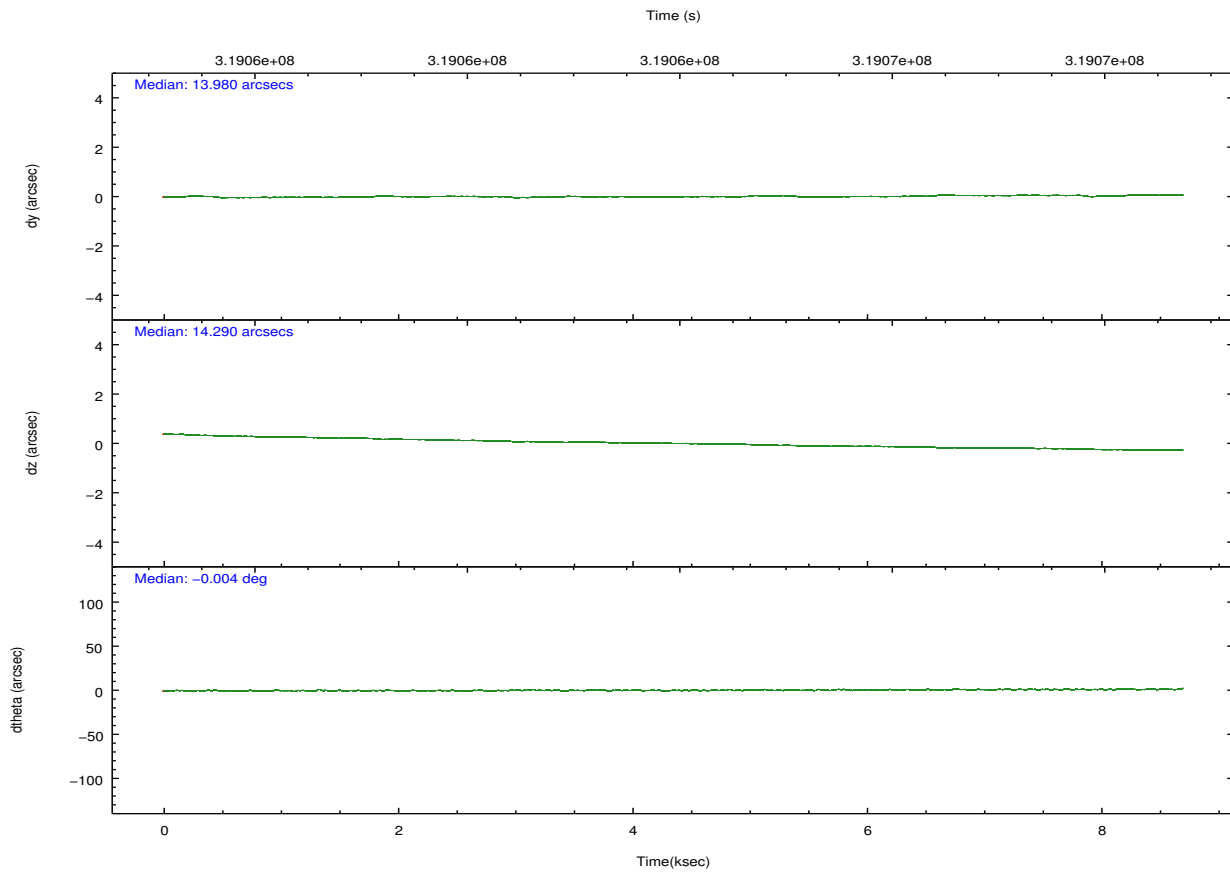
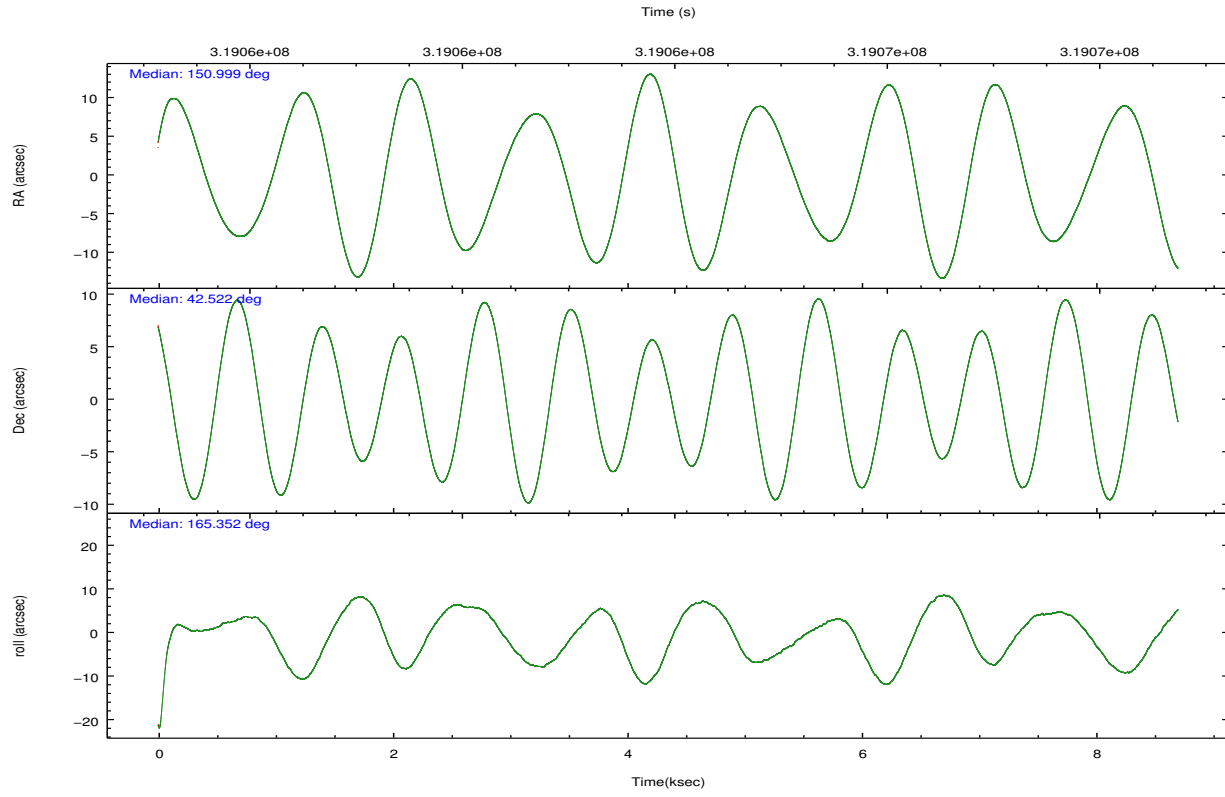
	ccd 2	ccd 3	ccd 6	ccd 7	ccd 8
grade 0 events	3599	3777	3489	3822	6952
	4%	5%	4%	3%	7%
grade 1 events	39	42	37	97	65
	0%	0%	0%	0%	0%
grade 2 events	1777	1777	2010	8812	5187
	2%	2%	2%	8%	5%
grade 3 events	778	860	887	3648	2362
	1%	1%	1%	3%	2%
grade 4 events	802	835	837	3680	2134
	1%	1%	1%	3%	2%
grade 5 events	2934	3336	3616	9822	4745
	3%	4%	4%	9%	4%
grade 6 events	1447	1565	1868	23169	5759
	1%	2%	2%	22%	5%
grade 7 events	63313	58243	64327	50241	69492
	84%	82%	83%	48%	71%

2.2 Compared Parameters

Parameter	Planned	Actual	Parameter	Planned	Actual
Instrument	ACIS	ACIS	Obspar format version number	7	7
Detector	ACIS-23678	ACIS-23678	Obspar file type	PREDICTED	ACTUAL
Grating	NONE	NONE	Obspar update status	NONE	UPDATED
Data mode	FAINT	FAINT	CCD I0 on	N	N
Observation mode	POINTING	POINTING	CCD I1 on	N	N
[deg] Pointing RA	151.034762	150.9991707414394	CCD I2 on	O1	Y
[deg] Pointing Dec	42.529228	42.52162591270103	CCD I3 on	Y	Y
[deg] Pointing Roll	165.179146	165.3598360285918	CCD S0 on	N	N
[mm] SIM focus pos	-0.684267	-0.6828225247311905	CCD S1 on	N	N
[mm] SIM defocus	0	0.001444936568705701	CCD S2 on	Y	Y
[mm] SIM translation stage pos	-190.132523	-190.1425803651734	CCD S3 on	Y	Y
[mm] SIM translation stage offset	0	0.01005778216563158	CCD S4 on	Y	Y
[s] Observation start time (MET)	319060576.184000	319059242.06134	CCD S5 on	N	N
Observation start date	2008-02-10T19:55:11	2008-02-10T19:34:02	Number of optional ACIS chips dropped	0	0
[s] Observation end time (MET)	319068276.184000	319068775.0743	On-chip summing requested	N	N
Observation end date	2008-02-10T22:03:31	2008-02-10T22:12:55	Subarray requested	NONE	NONE
Read mode	TIMED	TIMED	Alternating exposures requested	N	N
			[s] Primary exposure time	0.000000	3.1

2.3 Aspect



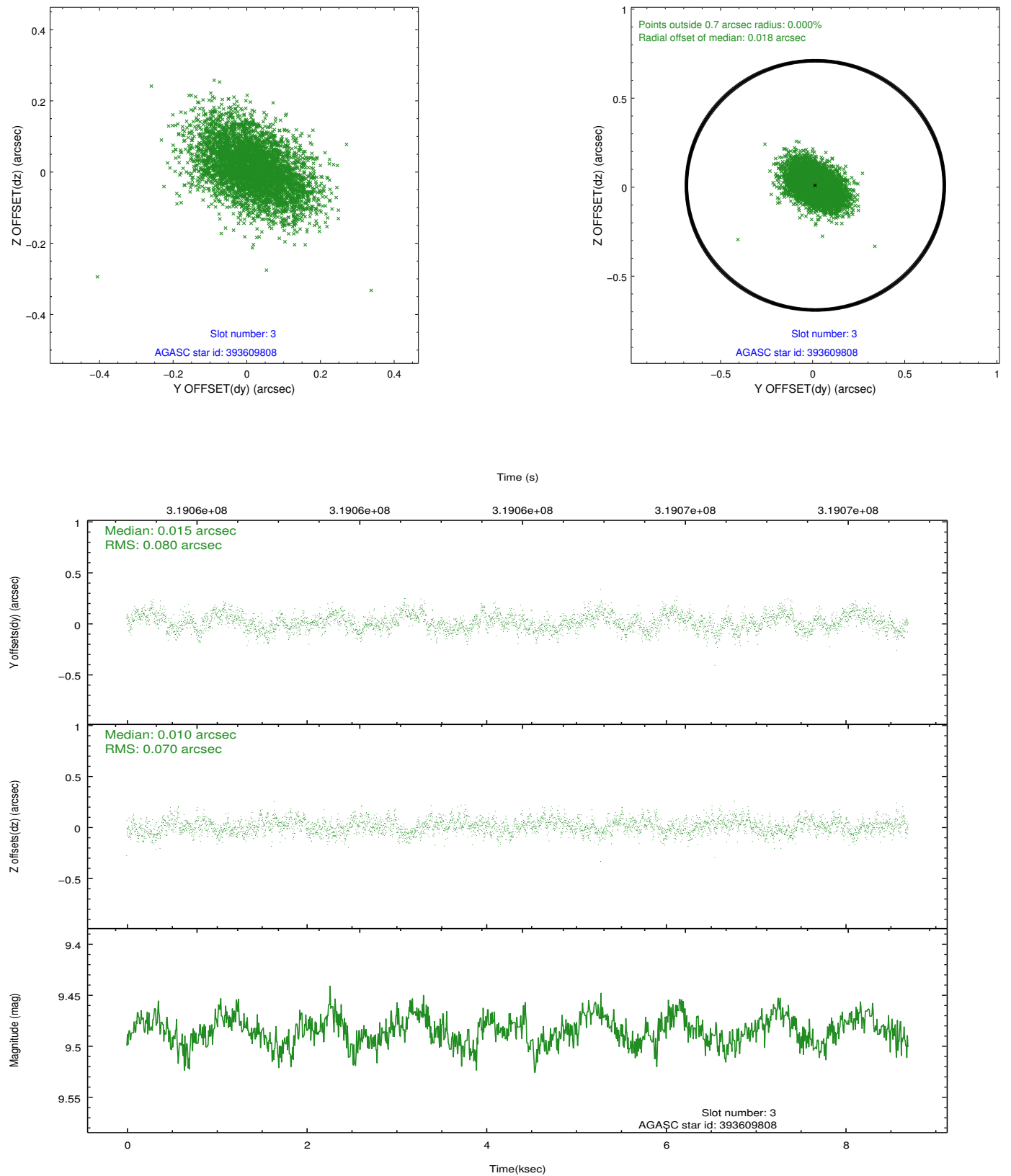


Slot Statistics

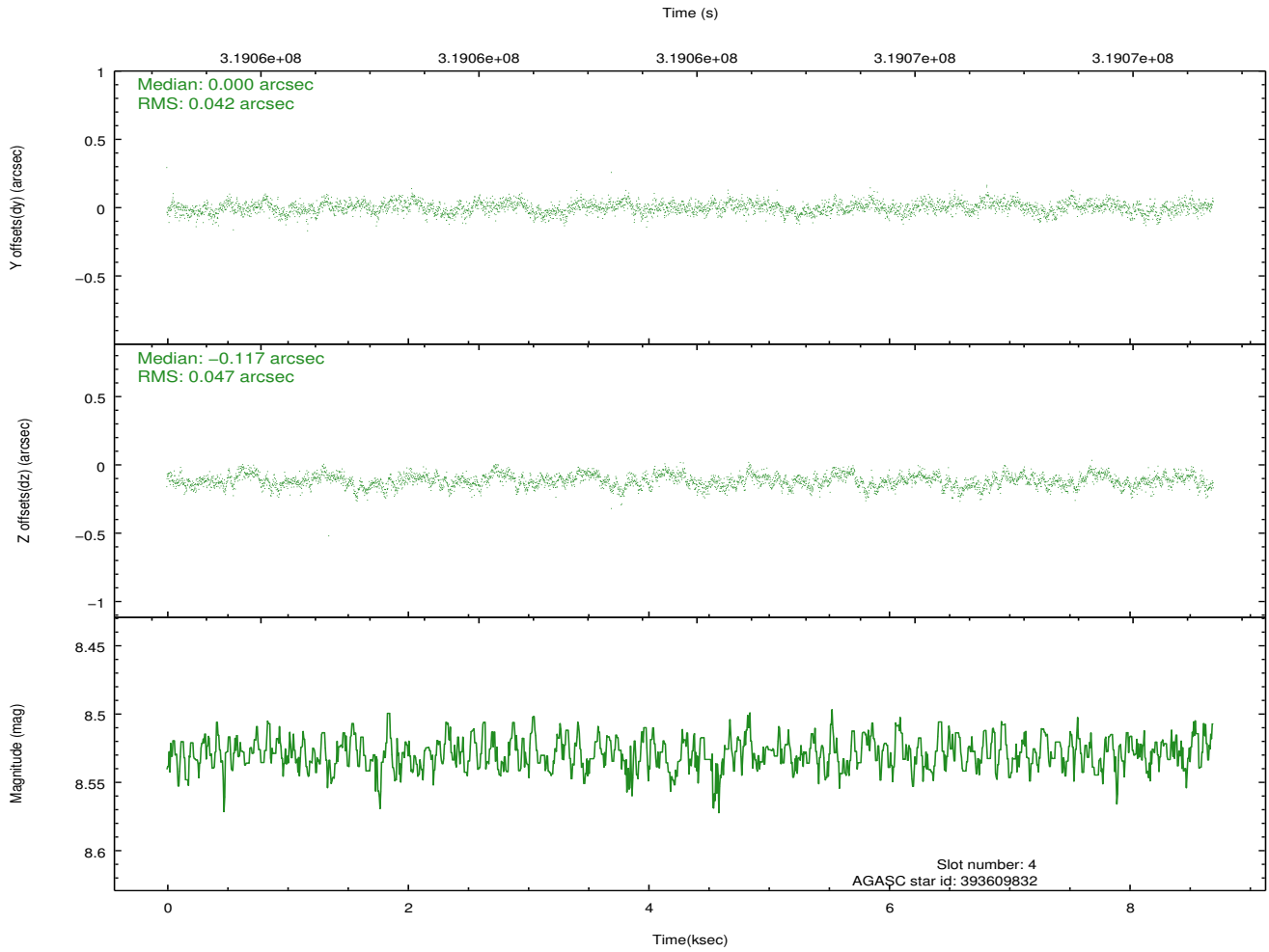
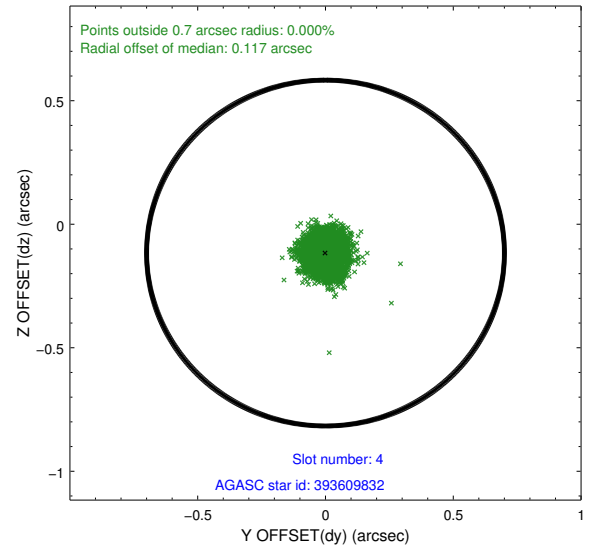
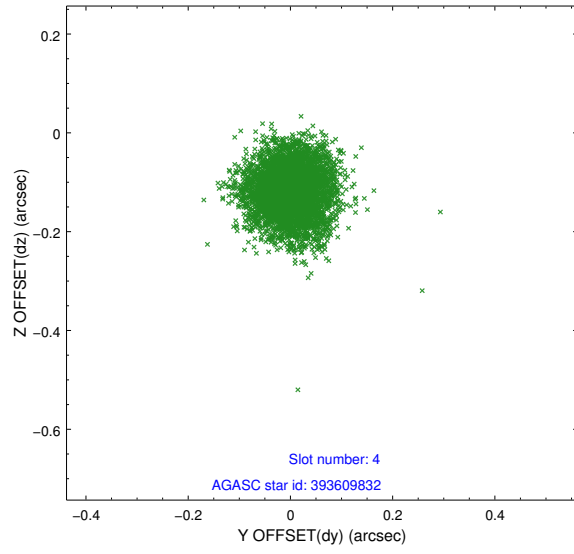
slot	status	id	mag	n_pts	med_dy	med_dz	dr1	dr2	ra	dec	mean_y	mean_z
0	FID	ACIS-S-2	7.09	2123	-0.062	-0.046	0.009	0.015	0.000000	0.000000	-766.98	-1735.65
1	FID	ACIS-S-4	7.19	2123	0.184	0.042	0.006	0.010	0.000000	0.000000	2146.24	172.28
2	FID	ACIS-S-5	7.22	2123	-0.154	0.012	0.008	0.014	0.000000	0.000000	-1819.11	166.61
3	GUIDE	393609808	9.48	4239	0.015	0.010	0.113	0.186	151.669223	41.918566	-2204.28	1684.78
4	GUIDE	393609832	8.53	4242	0.000	-0.117	0.067	0.108	151.117111	42.375145	-353.10	480.53
5	GUIDE	393611032	8.95	4240	-0.157	-0.081	0.098	0.150	150.838077	42.218320	220.81	1216.07
6	GUIDE	394008112	8.78	4244	-0.188	0.156	0.078	0.124	151.934398	43.019219	-1834.24	-2322.59
7	GUIDE	394011264	9.15	4242	0.327	0.031	0.097	0.162	150.360060	43.096961	2239.64	-1528.93

2.4 Star Slots

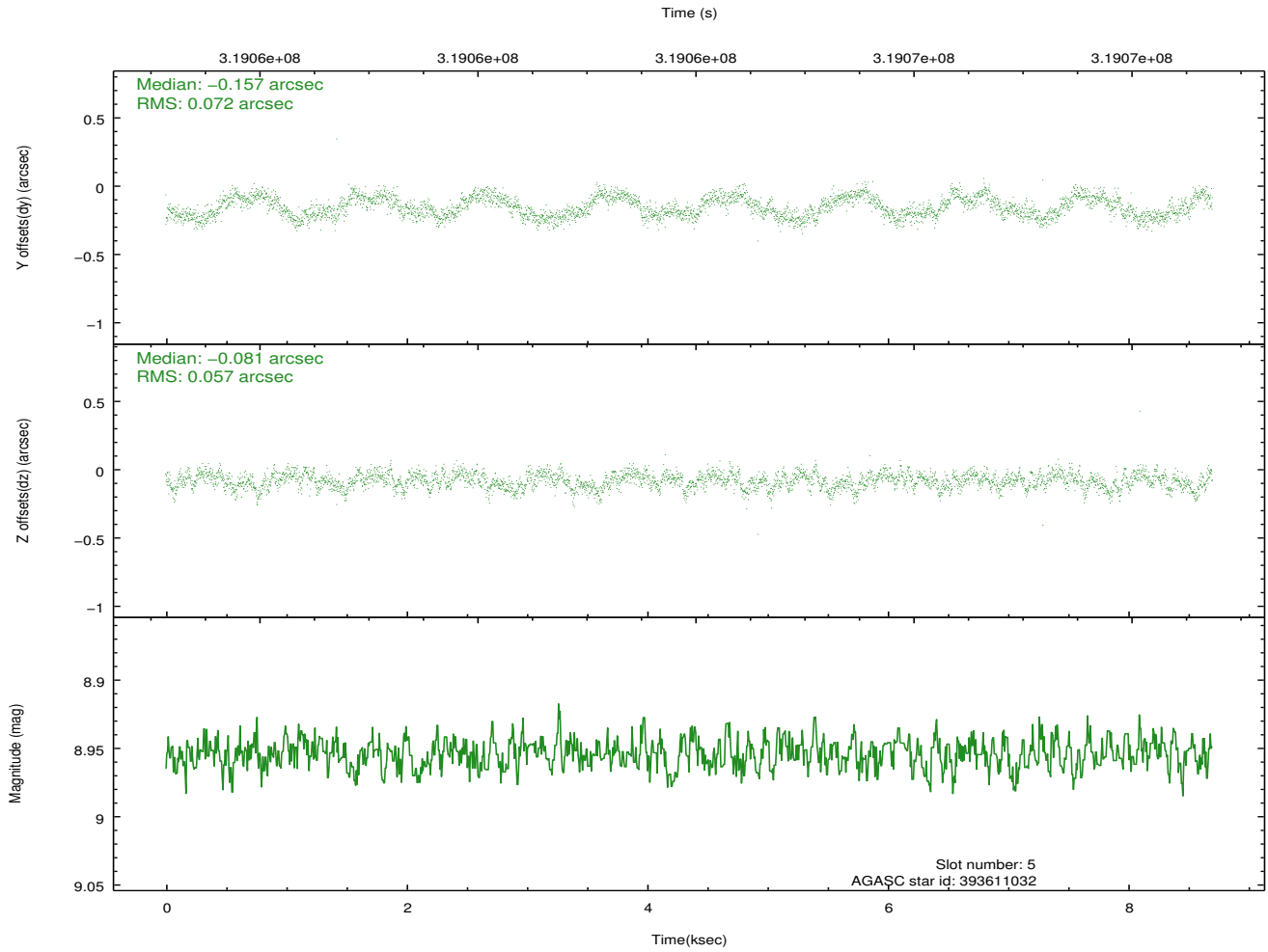
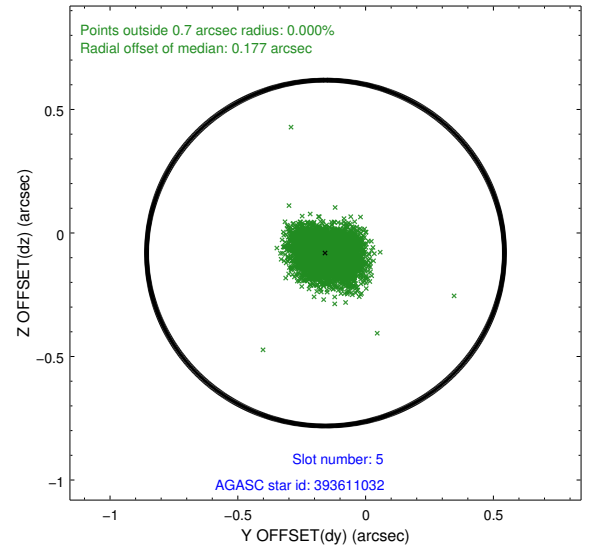
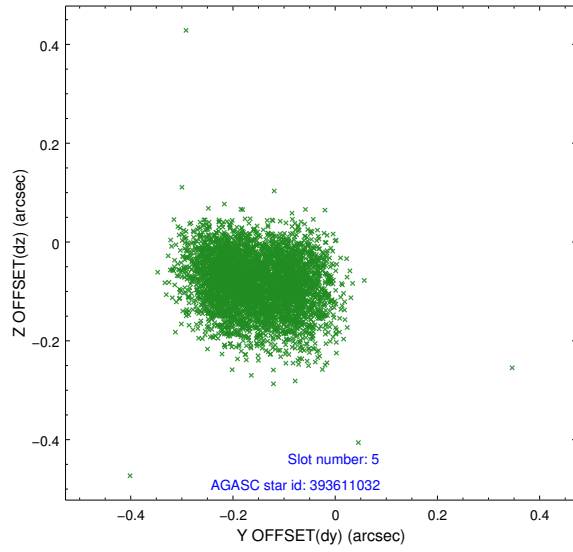
2.4.1 Slot 3



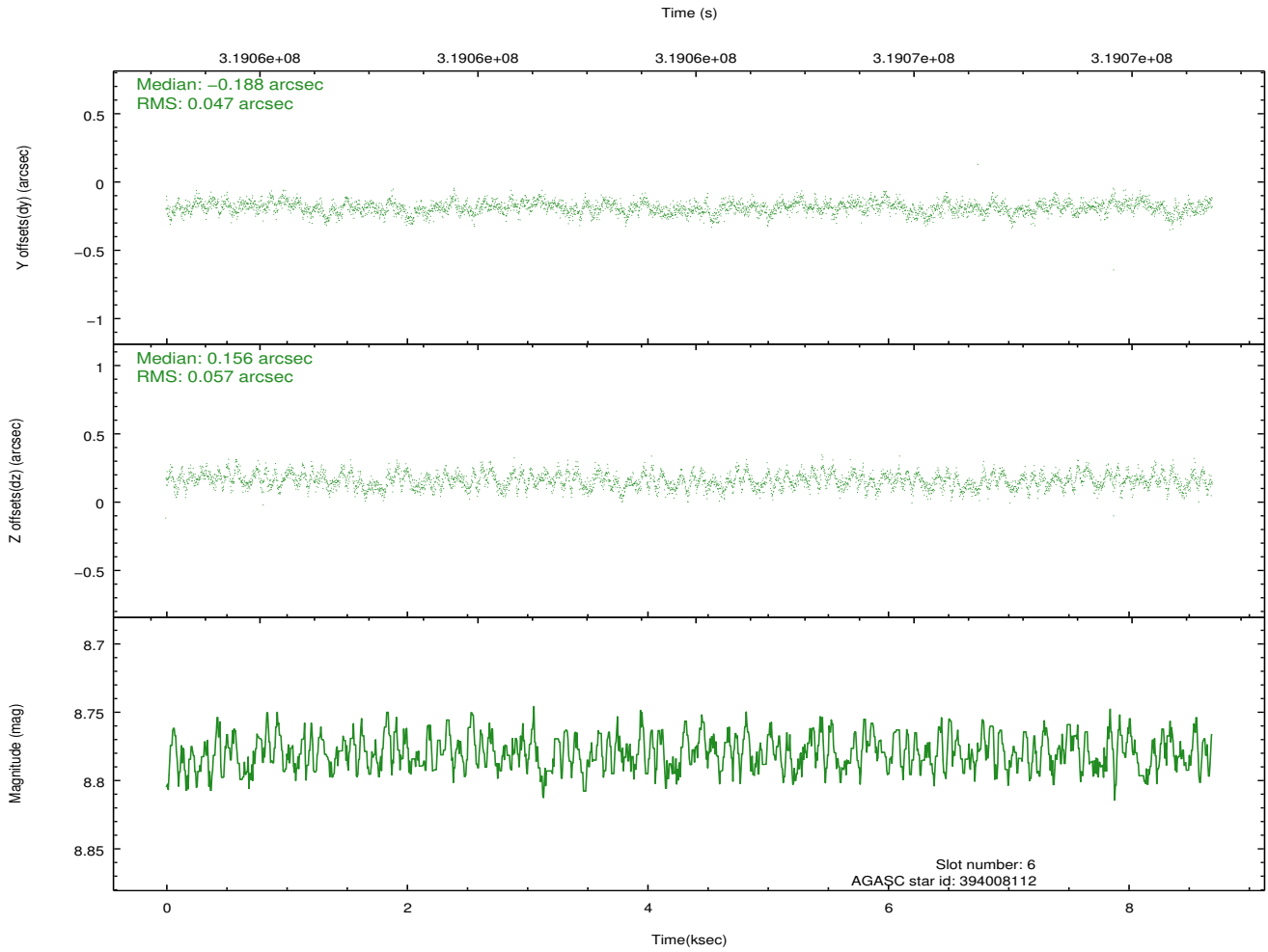
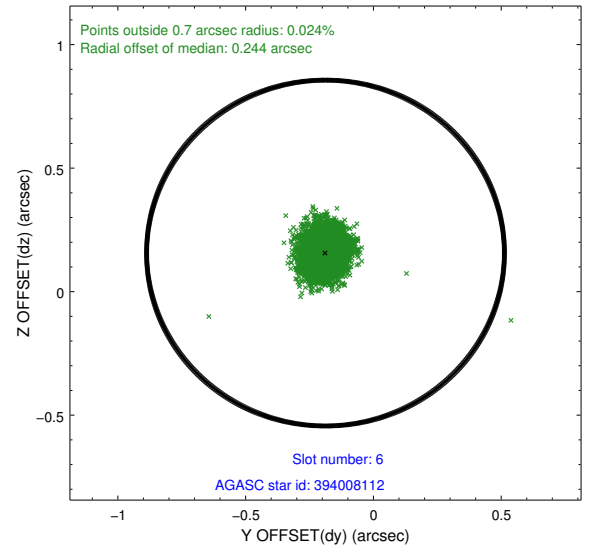
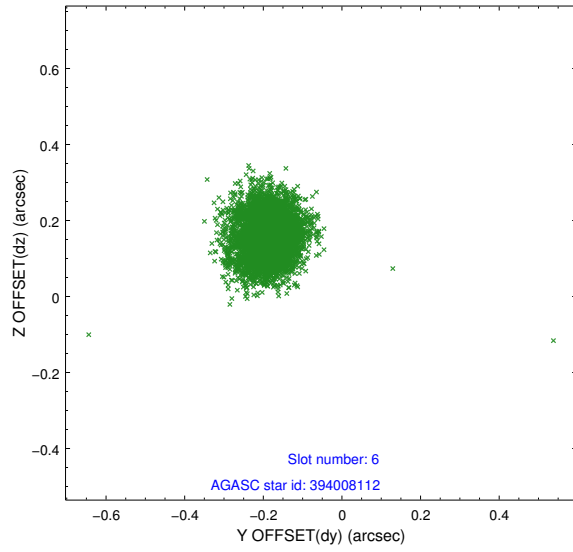
2.4.2 Slot 4



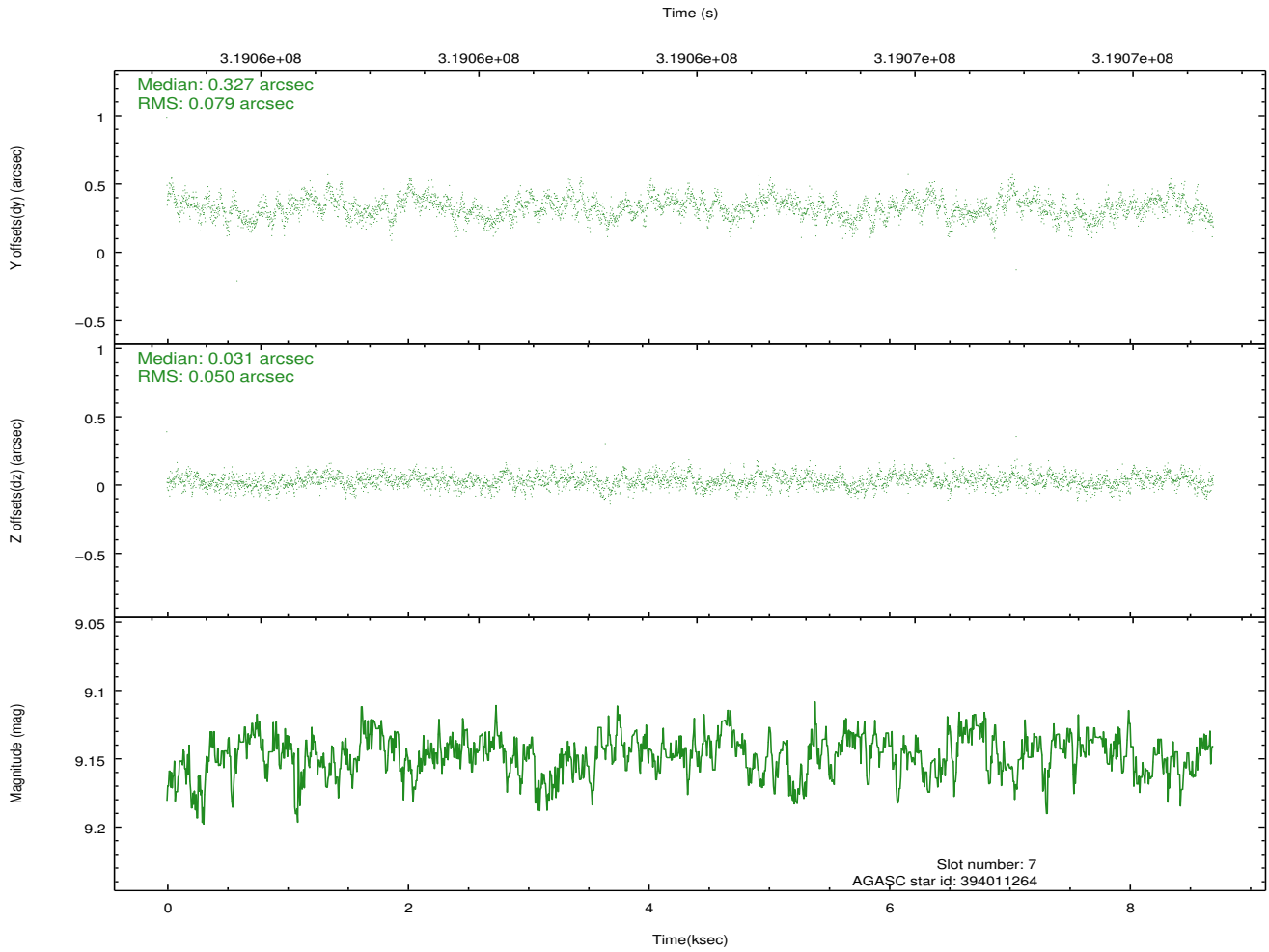
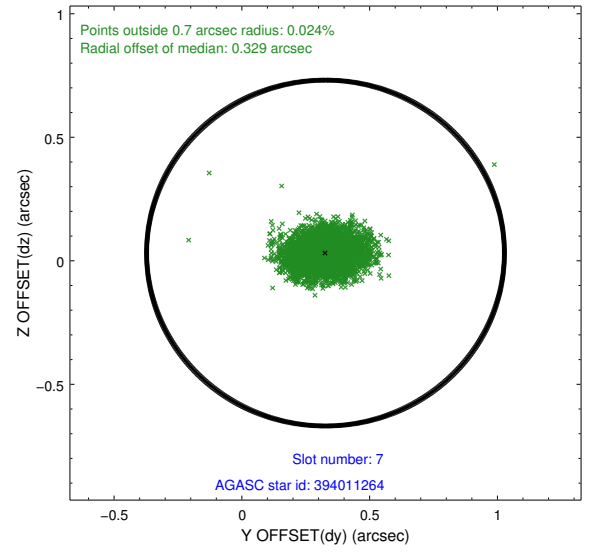
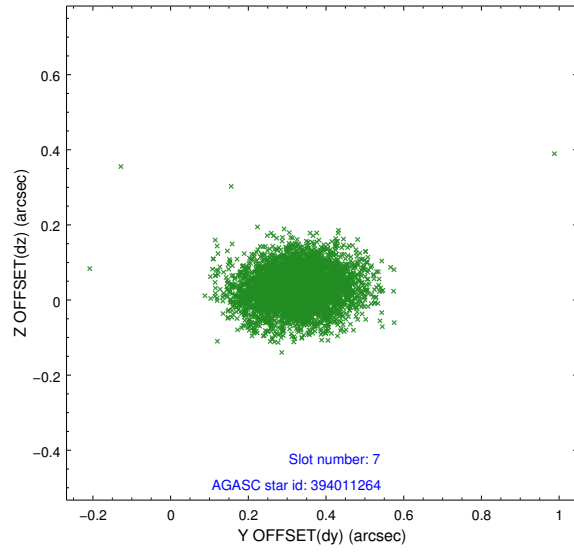
2.4.3 Slot 5



2.4.4 Slot 6

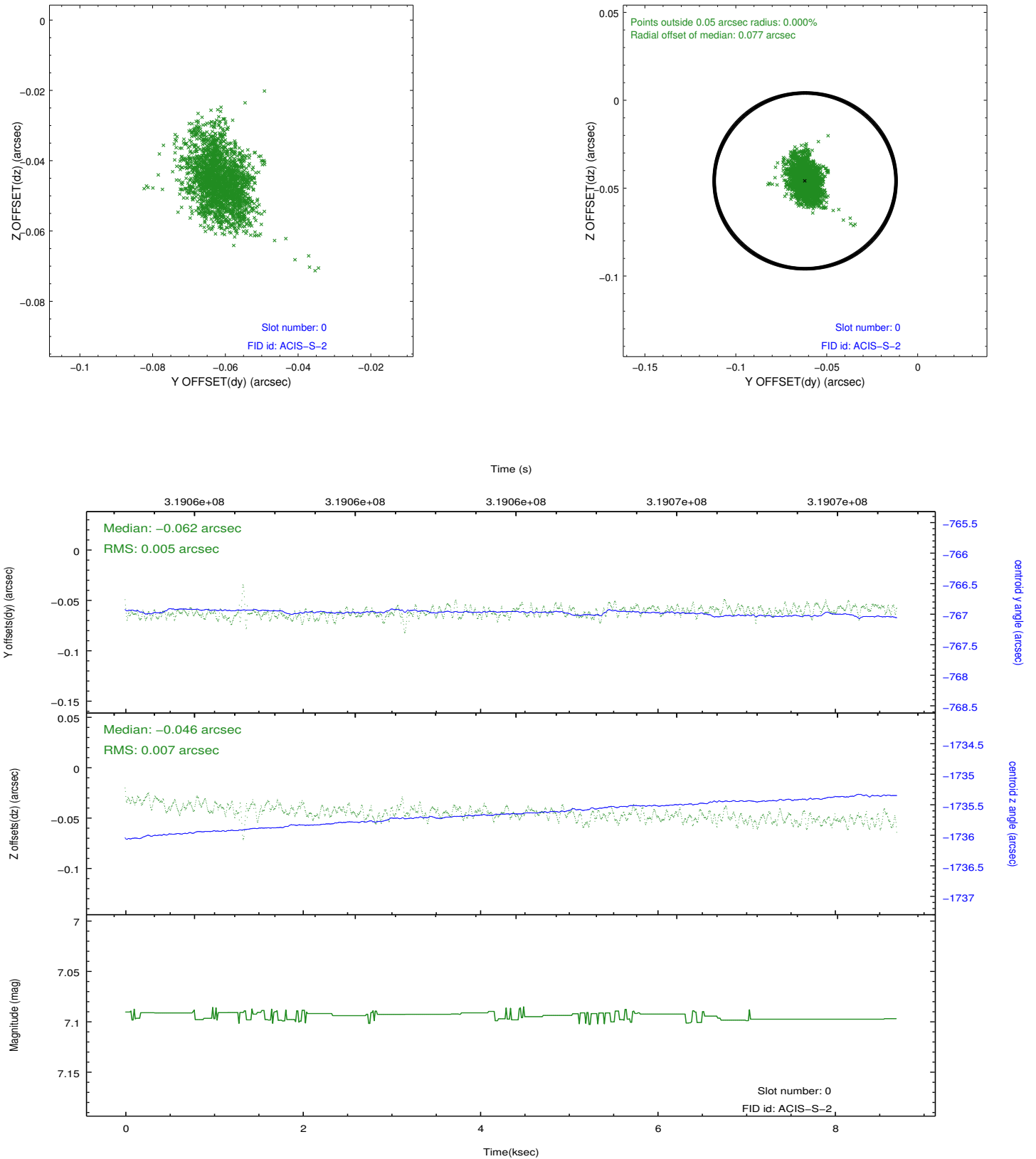


2.4.5 Slot 7

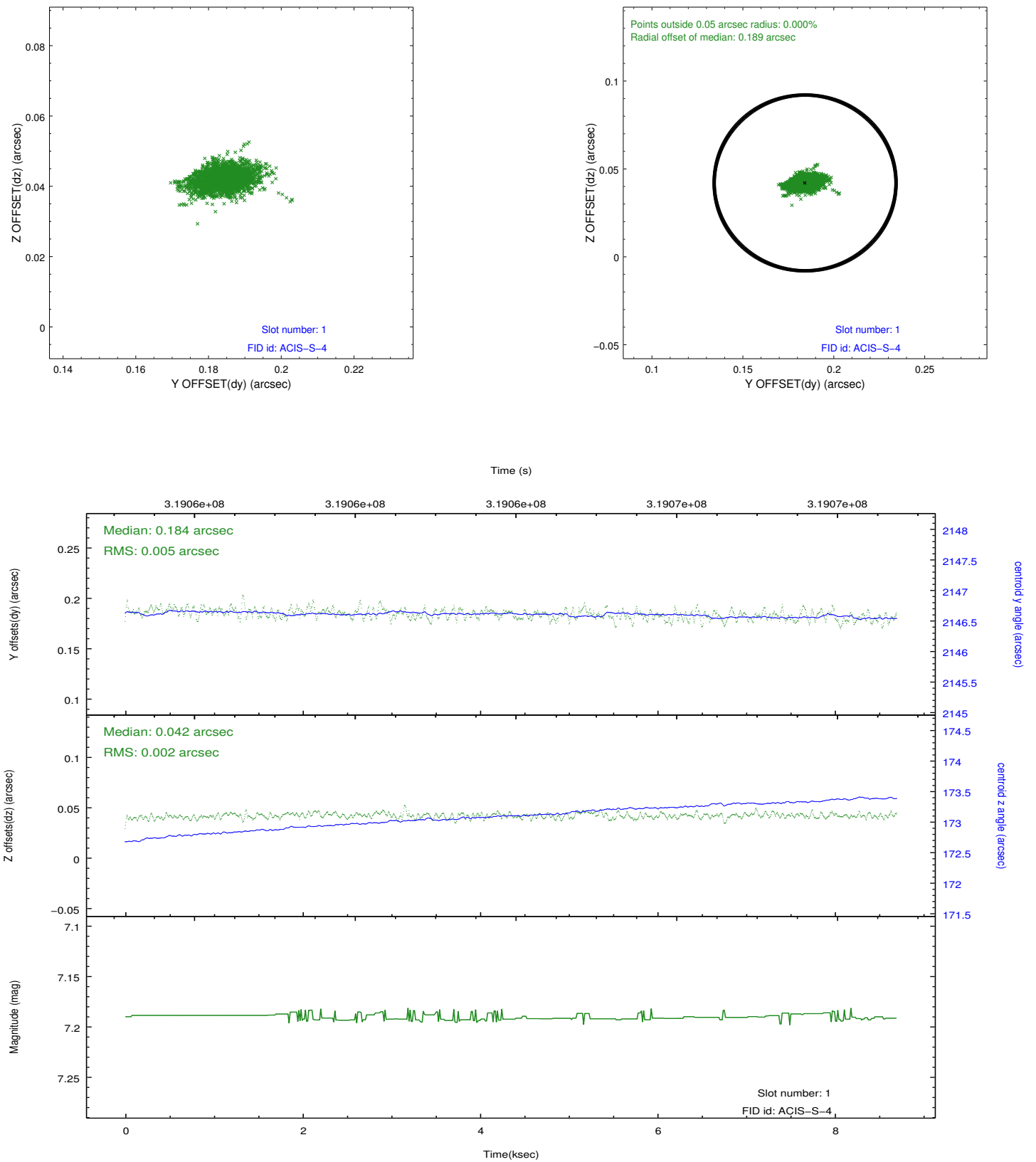


2.5 FID Slots

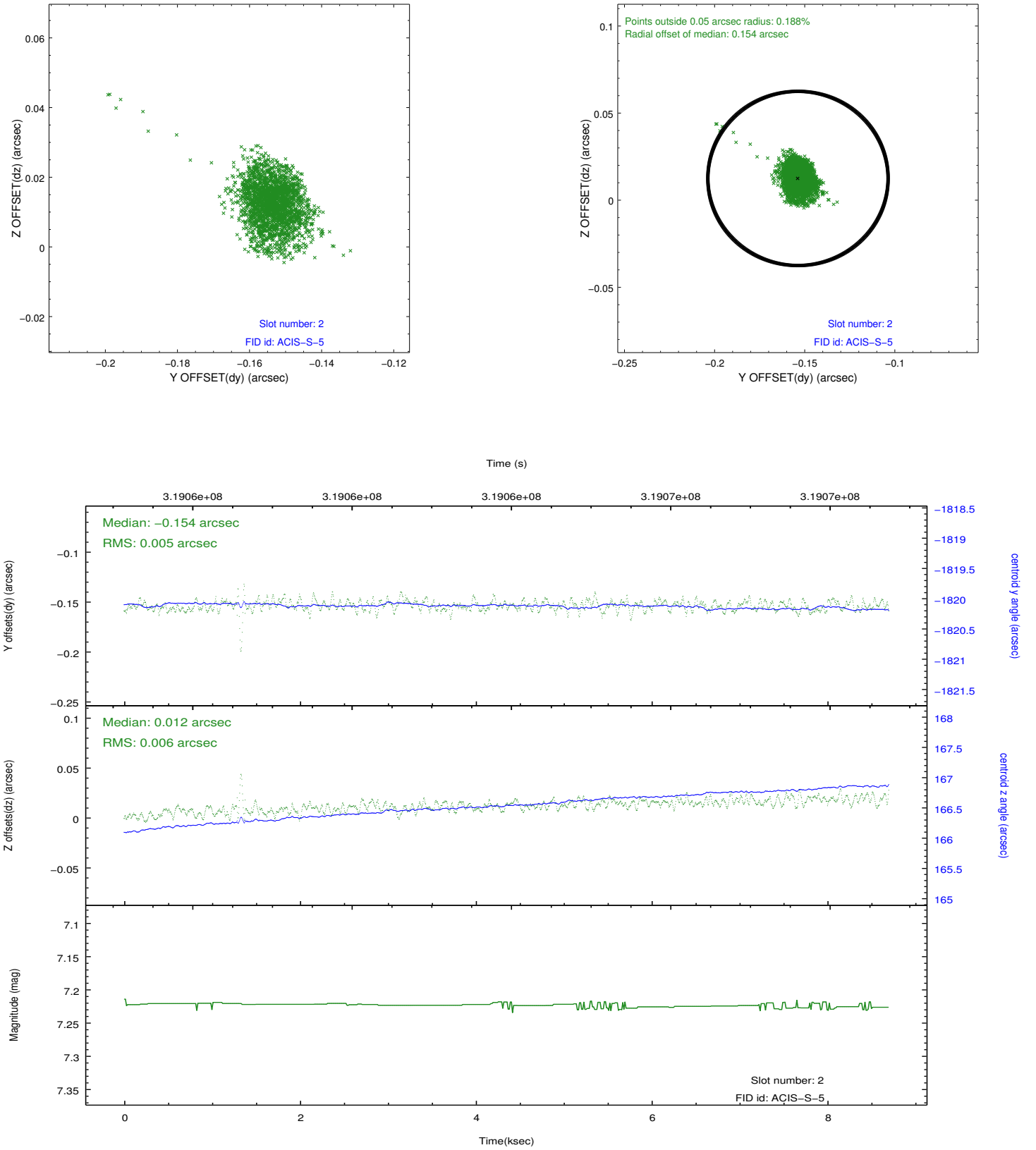
2.5.1 Slot 0



2.5.2 Slot 1



2.5.3 Slot 2



A Summary

A.1 Status

V&V Scientist	Jen Lauer
V&V Date (YYYY-MM-DD)	2012.05.11
V&V Edition	1
V&V Disposition and Status	OK
V&V Charge Time	7.73140005

A.2 Comments