

V&V Reference Report

L2 ASCDS Version : 8.4.4

Observation 9298 - L2 Version 2
Chandra X-Ray Center

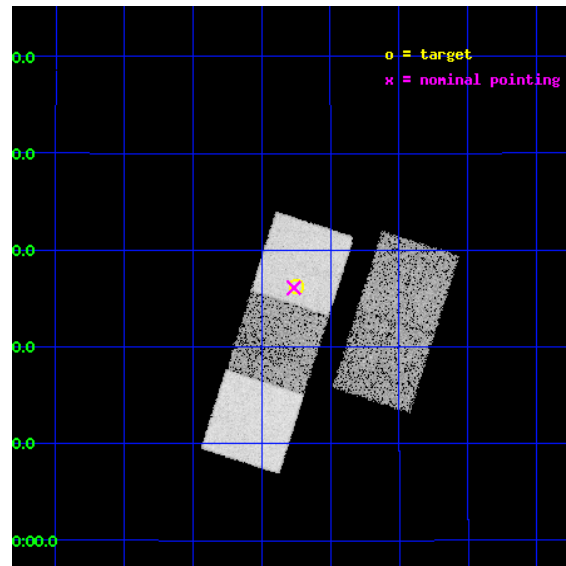
L2 Processing Date : May 5 2012

Contents

1	Front	2
2	OBI	3
2.1	OBI	3
2.1.1	Images	3
2.1.2	Bias	3
2.1.3	Parameters	4
2.1.4	Events	4
2.2	Compared Parameters	5
2.3	Aspect	6
2.4	Star Slots	9
2.4.1	Slot 3	9
2.4.2	Slot 4	10
2.4.3	Slot 5	11
2.4.4	Slot 6	12
2.4.5	Slot 7	13
2.5	FID Slots	14
2.5.1	Slot 0	14
2.5.2	Slot 1	15
2.5.3	Slot 2	16
A	Summary	17
A.1	Status	17
A.2	Comments	17

1 Front

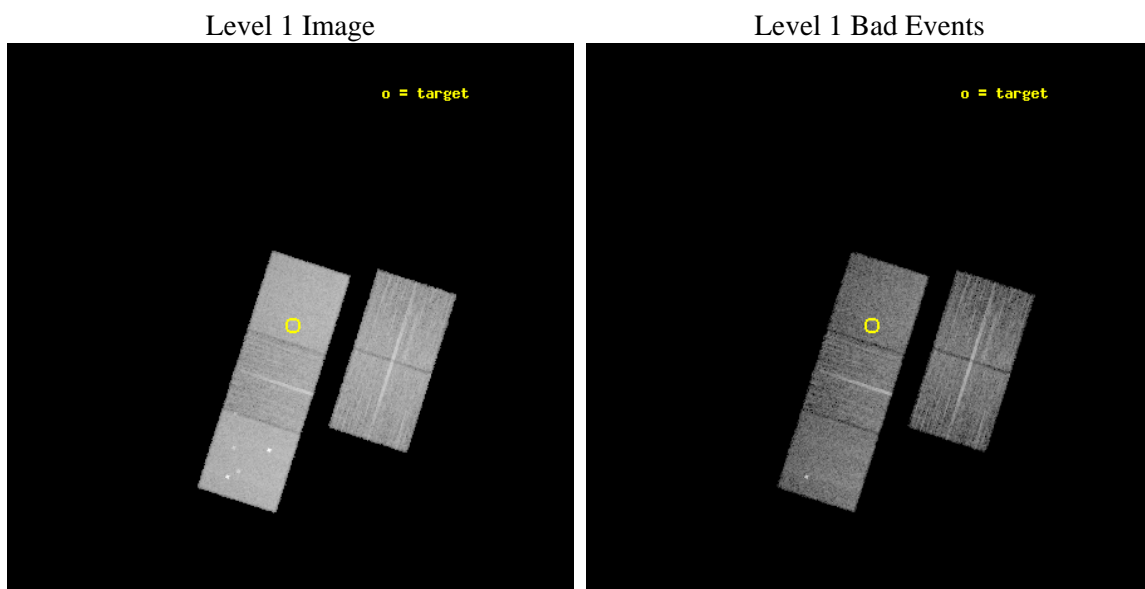
seq_num	701738	Sequence number
obs_id	9298	Observation id
title	Towards a Complete Sample: 3CR Extragalactic Radio Sources with $z < 0.3$	Proposal title
observer	Dr. Daniel Harris	Principal investigator
object	3C76.1	Source name
dtcycle	0	
cycle	P	events from which exps? Prim/Second/Both
ra_targ	45.8125	Observer's specified target RA [deg]
dec_targ	16.438333	Observer's specified target Dec [deg]
ra_nom	45.816296000814	Nominal RA [deg]
dec_nom	16.43520525664	Nominal Dec [deg]
roll_nom	287.73240966089	Nominal Roll [deg]
revision	2	Processing version of data
ontime	8162.3000627756	Sum of GTIs [s]
liveltime	8055.6536034576	Livetime [s]
ontime2	8162.3000627756	Sum of GTIs [s]
ontime3	8162.3000627756	Sum of GTIs [s]
ontime5	8162.3000627756	Sum of GTIs [s]
ontime6	8152.8771416545	Sum of GTIs [s]
ontime7	8162.3000627756	Sum of GTIs [s]
l2events	124664	Number of level 2 events



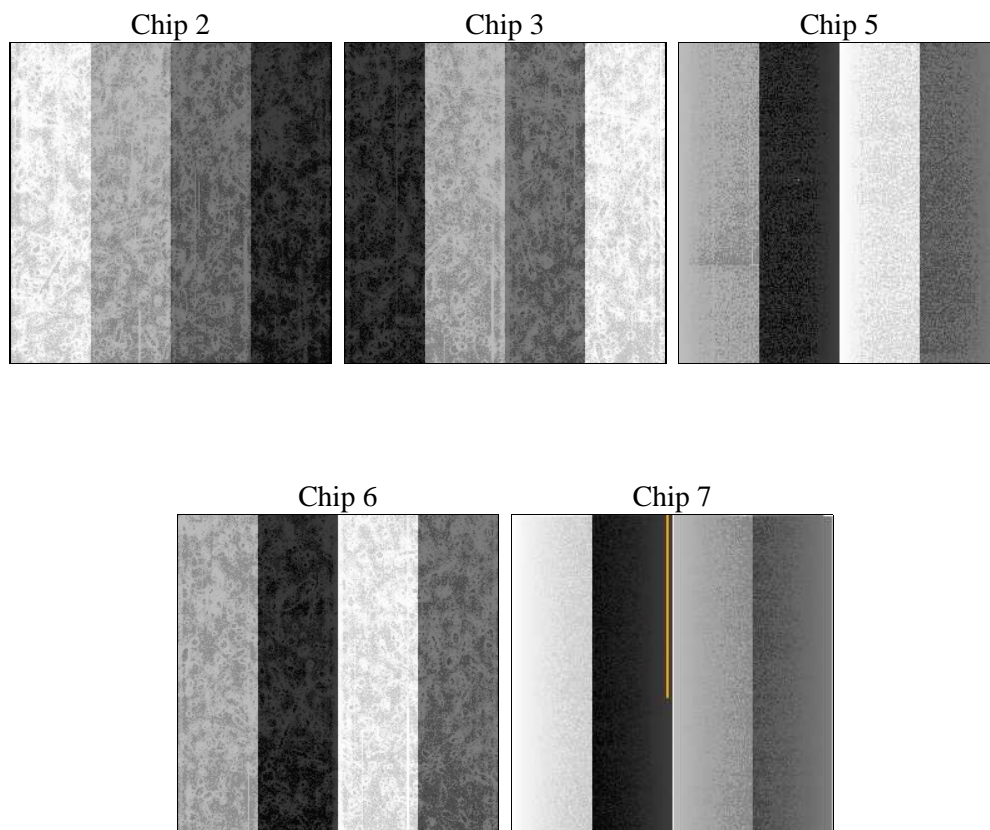
2 OBI

2.1 OBI

2.1.1 Images



2.1.2 Bias



2.1.3 Parameters

obi_num	0	Obi number	sched_exp_time	8000.000000	[s] Scheduled observation exposure time
ascdsver	8.4.4	Processing system revision	ontime	8162.3000627756	Sum of GTIs [s]
caldsver	4.4.9	 	ontime2	8162.3000627756	Sum of GTIs [s]
date	2012-05-05T22:11:02	Date and time of file creation	ontime3	8162.3000627756	Sum of GTIs [s]
revision	2	Processing version of data	ontime5	8162.3000627756	Sum of GTIs [s]
			ontime6	8152.8771416545	Sum of GTIs [s]
			ontime7	8162.3000627756	Sum of GTIs [s]
			l1events	494699	Number of level 1 events

2.1.4 Events

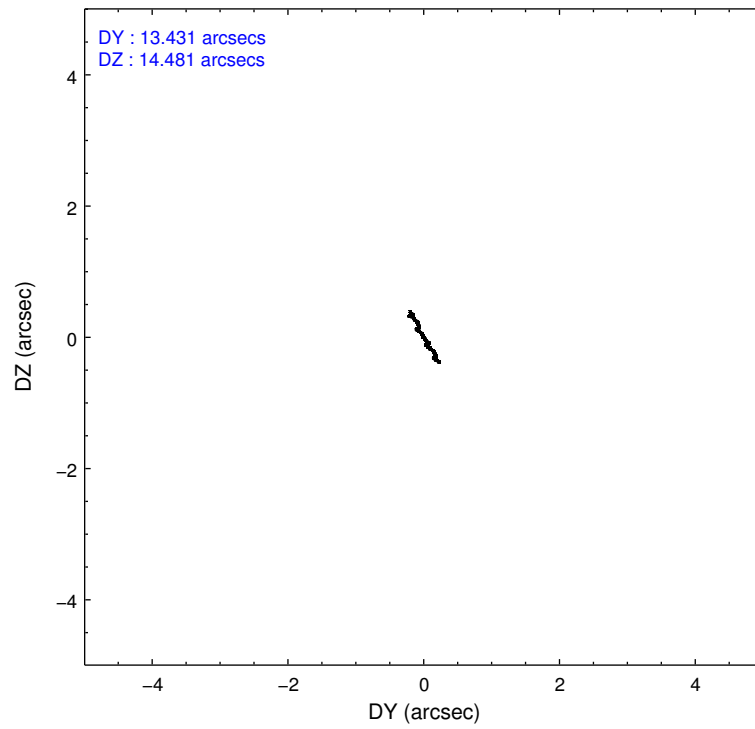
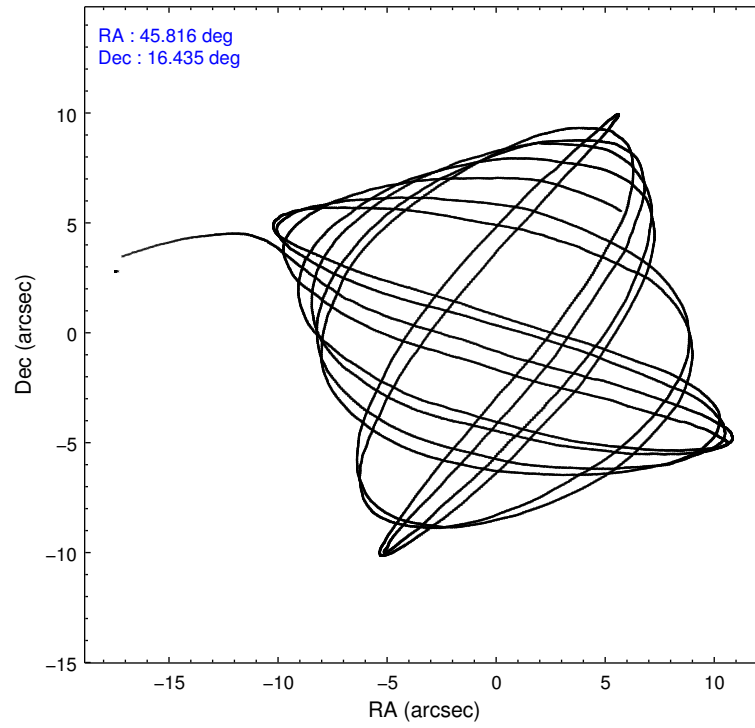
	ccd 2	ccd 3	ccd 5	ccd 6	ccd 7
level 1 events	82902	81603	132050	82437	115707
rejected events	73330	72118	72716	72950	68900
rejected %	88%	88%	55%	88%	59%

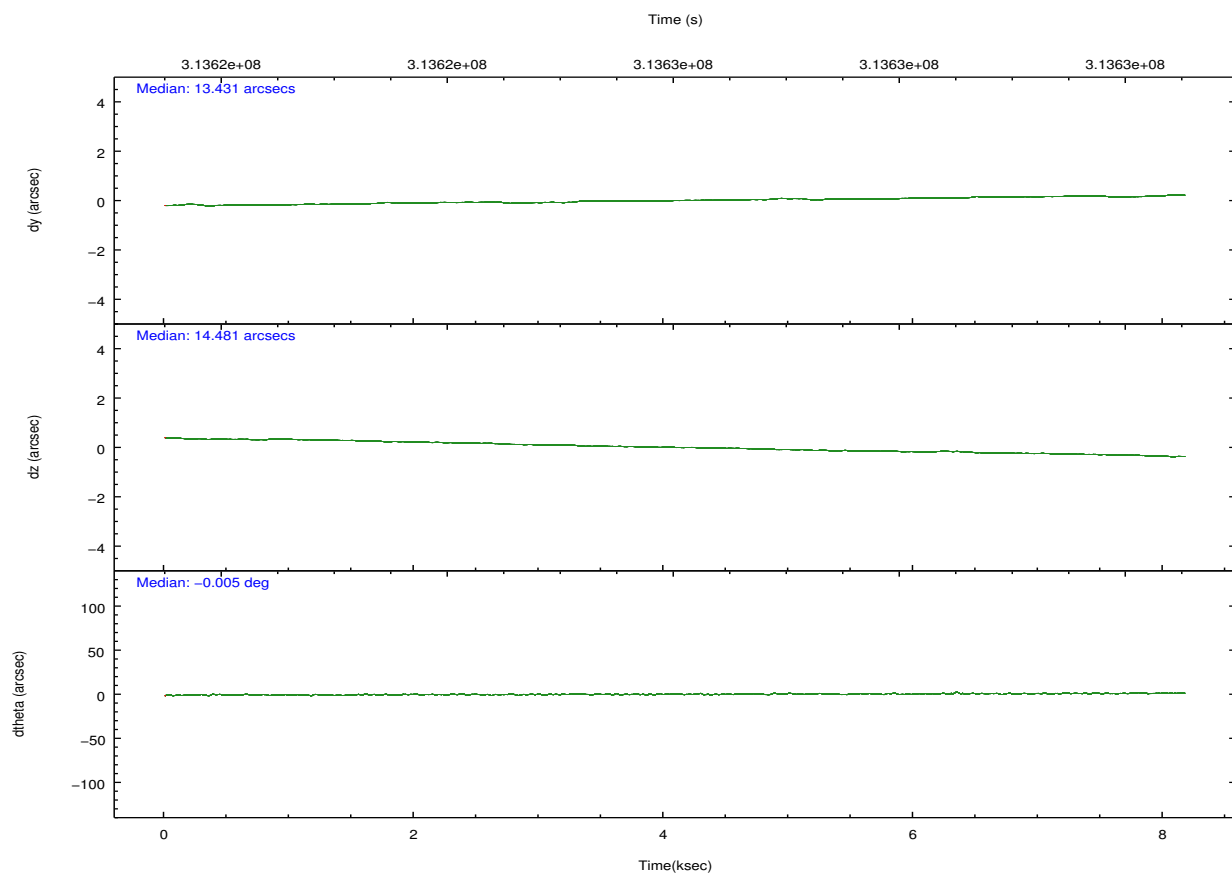
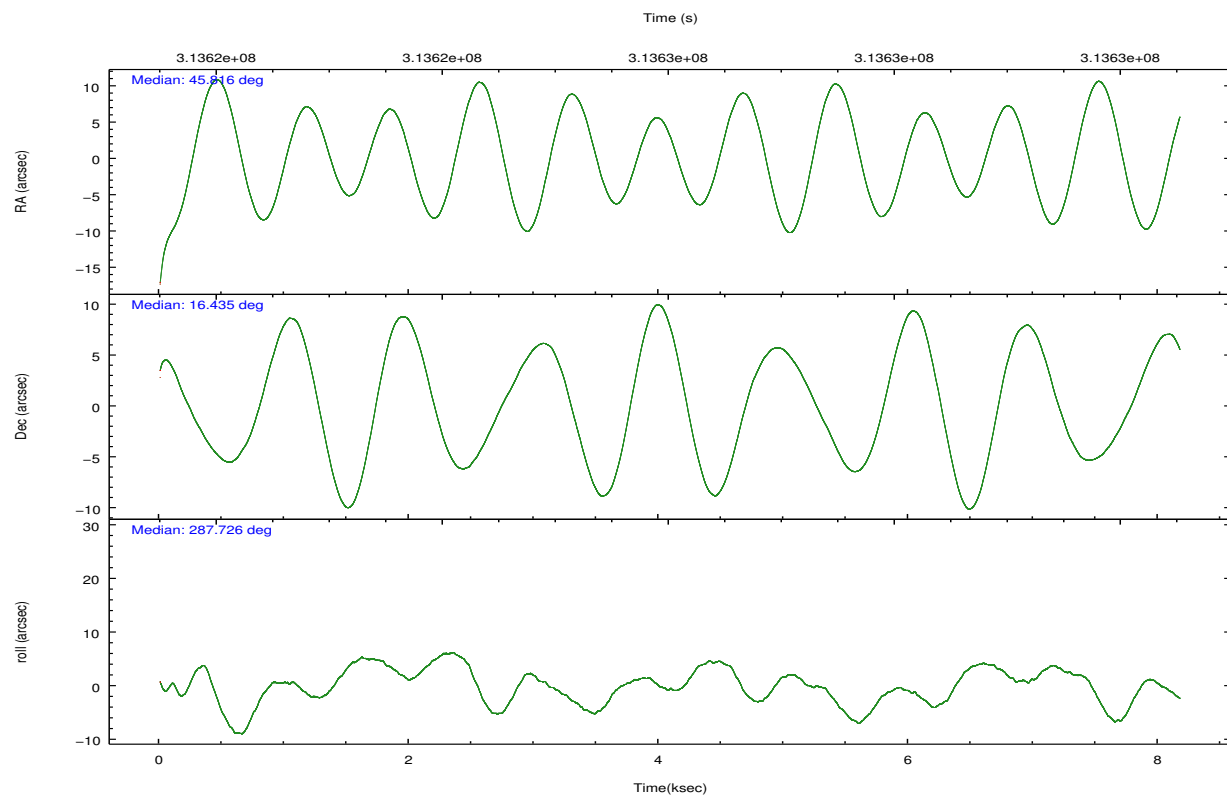
	ccd 2	ccd 3	ccd 5	ccd 6	ccd 7
grade 0 events	4381	4153	6792	3729	4010
	5%	5%	5%	4%	3%
grade 1 events	52	43	176	48	133
	0%	0%	0%	0%	0%
grade 2 events	2088	2020	18733	2144	9771
	2%	2%	14%	2%	8%
grade 3 events	886	964	2201	975	4172
	1%	1%	1%	1%	3%
grade 4 events	896	930	2083	983	4000
	1%	1%	1%	1%	3%
grade 5 events	3234	3907	9333	4045	10735
	3%	4%	7%	4%	9%
grade 6 events	1600	1727	31427	1965	26334
	1%	2%	23%	2%	22%
grade 7 events	69765	67859	61305	68548	56552
	84%	83%	46%	83%	48%

2.2 Compared Parameters

Parameter	Planned	Actual	Parameter	Planned	Actual
Instrument	ACIS	ACIS	Obspar format version number	7	7
Detector	ACIS-23567	ACIS-23567	Obspar file type	PREDICTED	ACTUAL
Grating	NONE	NONE	Obspar update status	NONE	UPDATED
Data mode	VFAINT	VFAINT	CCD I0 on	N	N
Observation mode	POINTING	POINTING	CCD I1 on	N	N
[deg] Pointing RA	45.794981	45.81629600081419	CCD I2 on	Y	Y
[deg] Pointing Dec	16.453293	16.43520525664019	CCD I3 on	Y	Y
[deg] Pointing Roll	287.581810	287.7324096608871	CCD S0 on	N	N
[mm] SIM focus pos	-0.684267	-0.6828225247311905	CCD S1 on	O1	Y
[mm] SIM defocus	0	0.001444936568705701	CCD S2 on	Y	Y
[mm] SIM translation stage pos	-190.132523	-190.1425803651734	CCD S3 on	Y	Y
[mm] SIM translation stage offset	0	0.01005778216563158	CCD S4 on	N	N
[s] Observation start time (MET)	313622104.184000	313620984.8854	CCD S5 on	N	N
Observation start date	2007-12-09T21:13:59	2007-12-09T20:56:24	Number of optional ACIS chips dropped	0	0
[s] Observation end time (MET)	313630104.184000	313631109.32339	On-chip summing requested	N	N
Observation end date	2007-12-09T23:27:19	2007-12-09T23:45:09	Subarray requested	NONE	NONE
Read mode	TIMED	TIMED	Alternating exposures requested	N	N
			[s] Primary exposure time	0.000000	3.1

2.3 Aspect



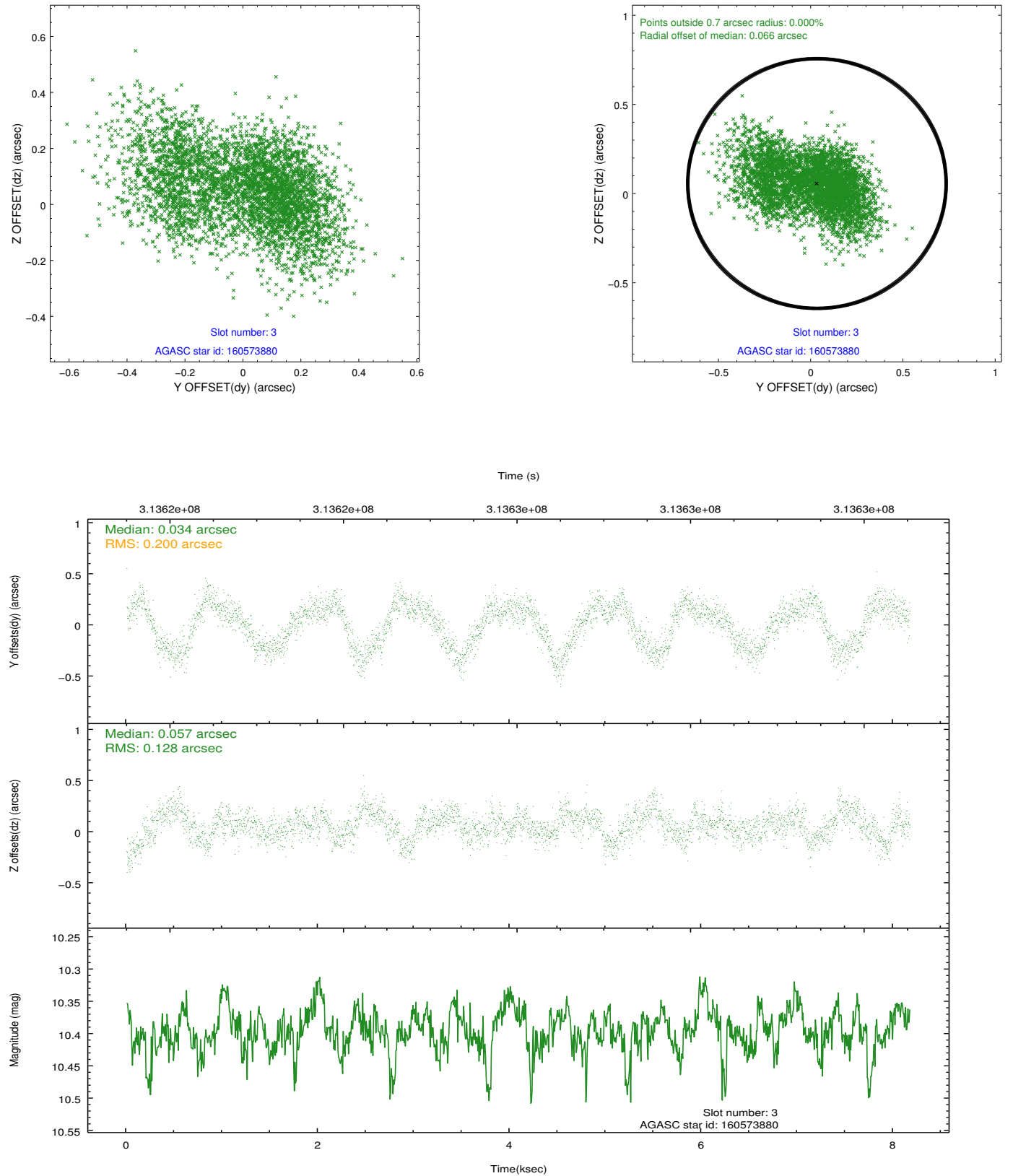


Slot Statistics

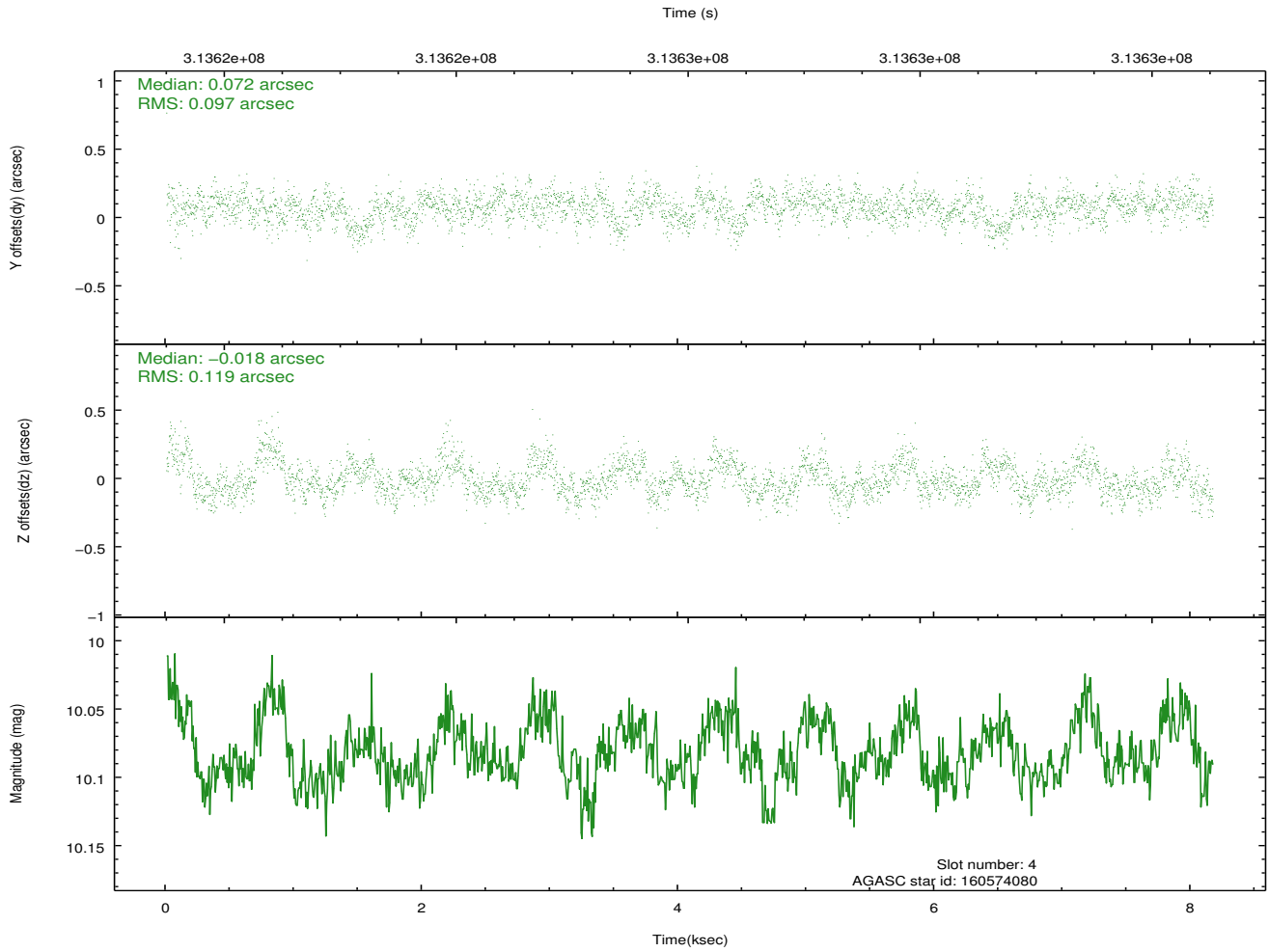
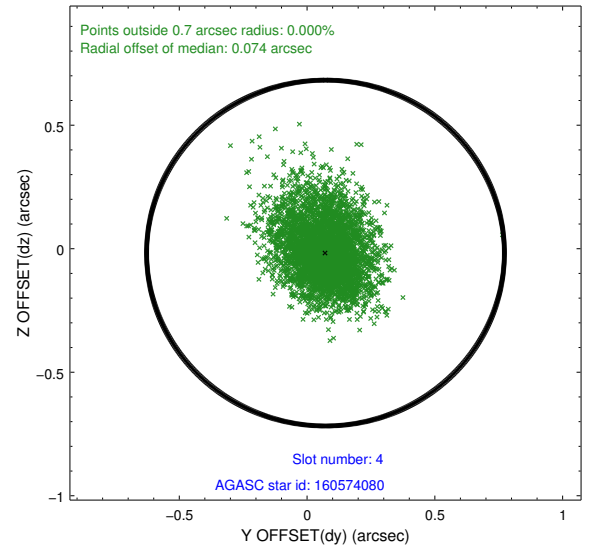
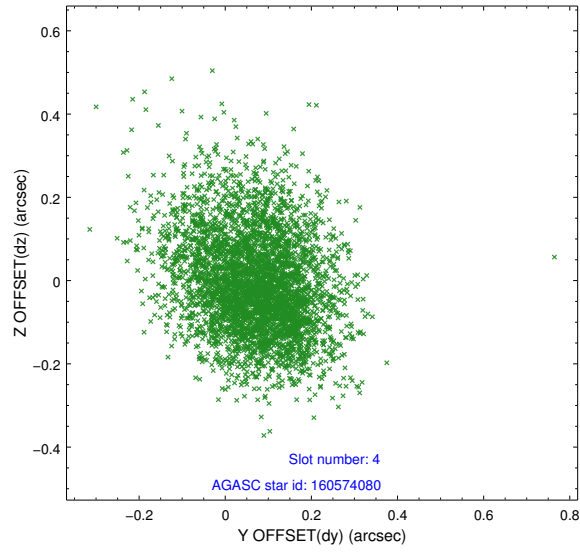
slot	status	id	mag	n_pts	med_dy	med_dz	dr1	dr2	ra	dec	mean_y	mean_z
0	FID	ACIS-S-2	7.09	1992	-0.049	-0.045	0.010	0.016	0.000000	0.000000	-766.39	-1735.86
1	FID	ACIS-S-4	7.19	1993	0.172	0.036	0.007	0.012	0.000000	0.000000	2146.78	172.02
2	FID	ACIS-S-5	7.22	1992	-0.153	0.018	0.009	0.015	0.000000	0.000000	-1818.48	166.42
3	GUIDE	160573880	10.39	3981	0.034	0.057	0.256	0.417	45.439602	16.027205	1090.47	-1634.86
4	GUIDE	160574080	10.08	3982	0.072	-0.018	0.160	0.267	45.553754	15.771431	2088.19	-1537.84
5	GUIDE	160440488	9.64	3982	0.001	-0.100	0.131	0.215	45.219031	15.950426	1122.10	-2446.55
6	GUIDE	160569472	9.66	3982	-0.020	-0.075	0.134	0.210	46.348961	16.986934	-1257.46	2398.85
7	GUIDE	160571432	10.11	3976	-0.061	0.118	0.249	0.387	46.205531	17.260475	-2345.33	2224.72

2.4 Star Slots

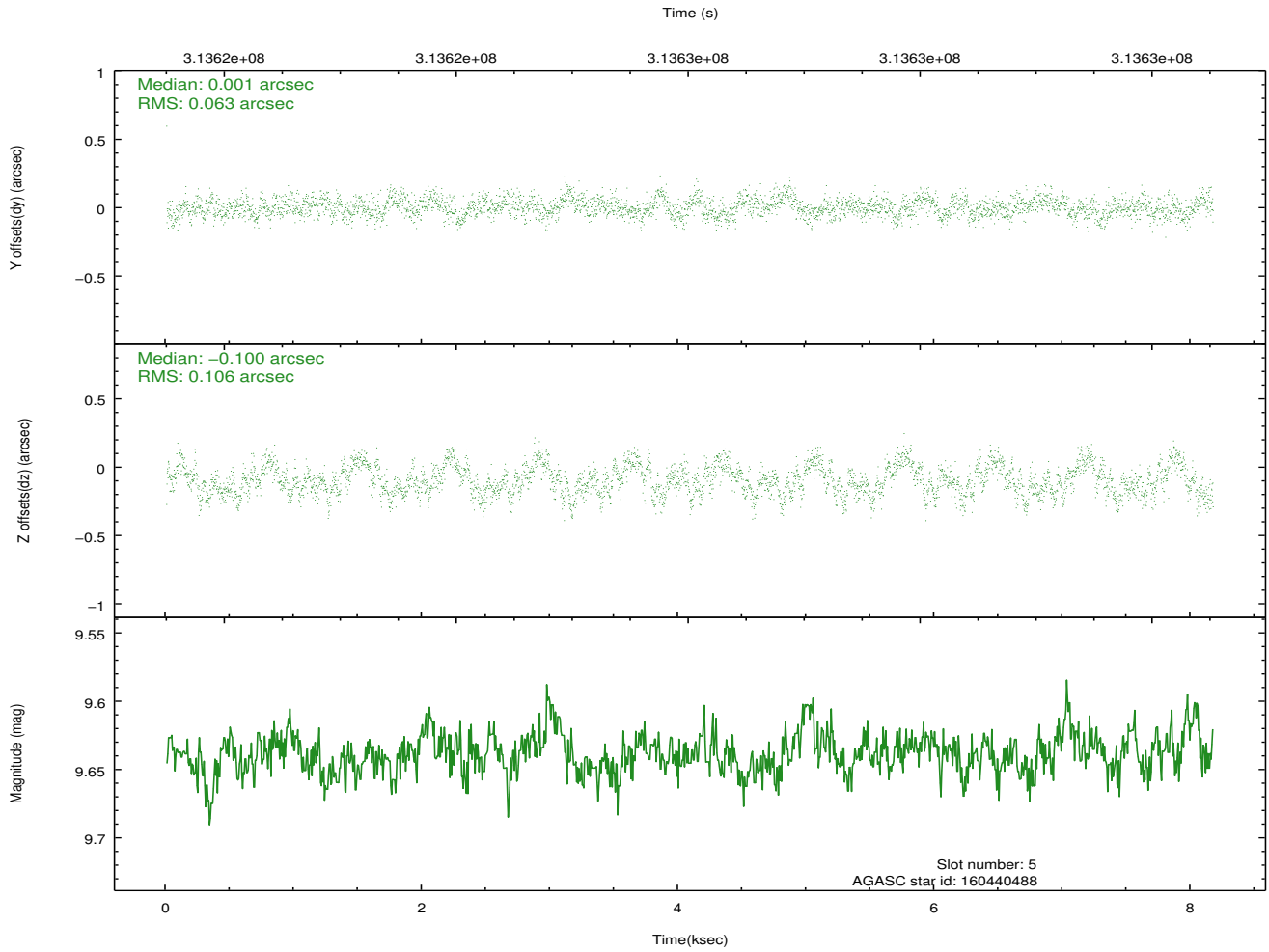
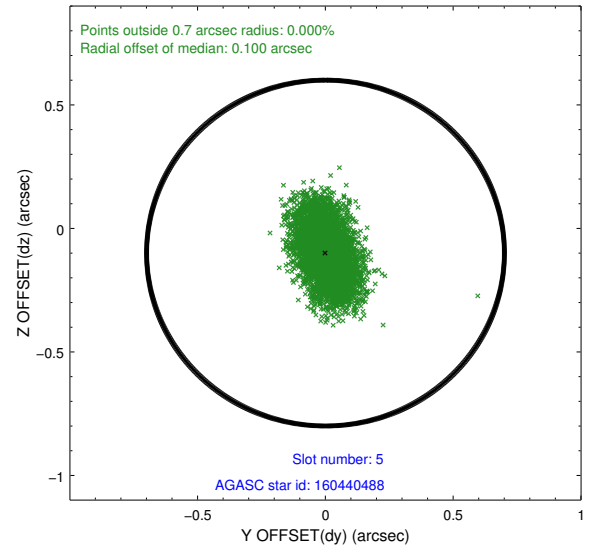
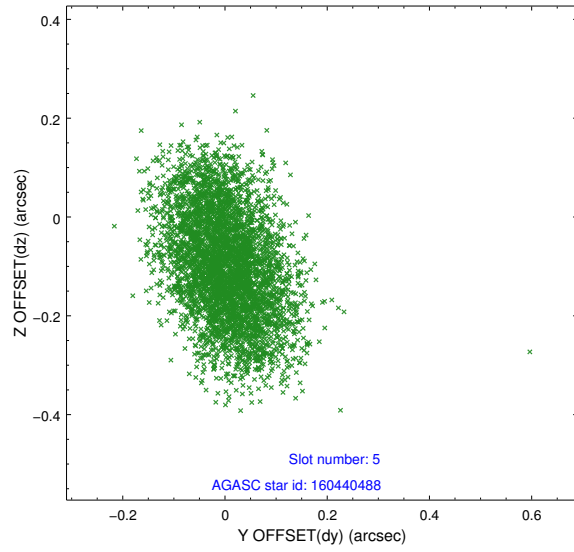
2.4.1 Slot 3



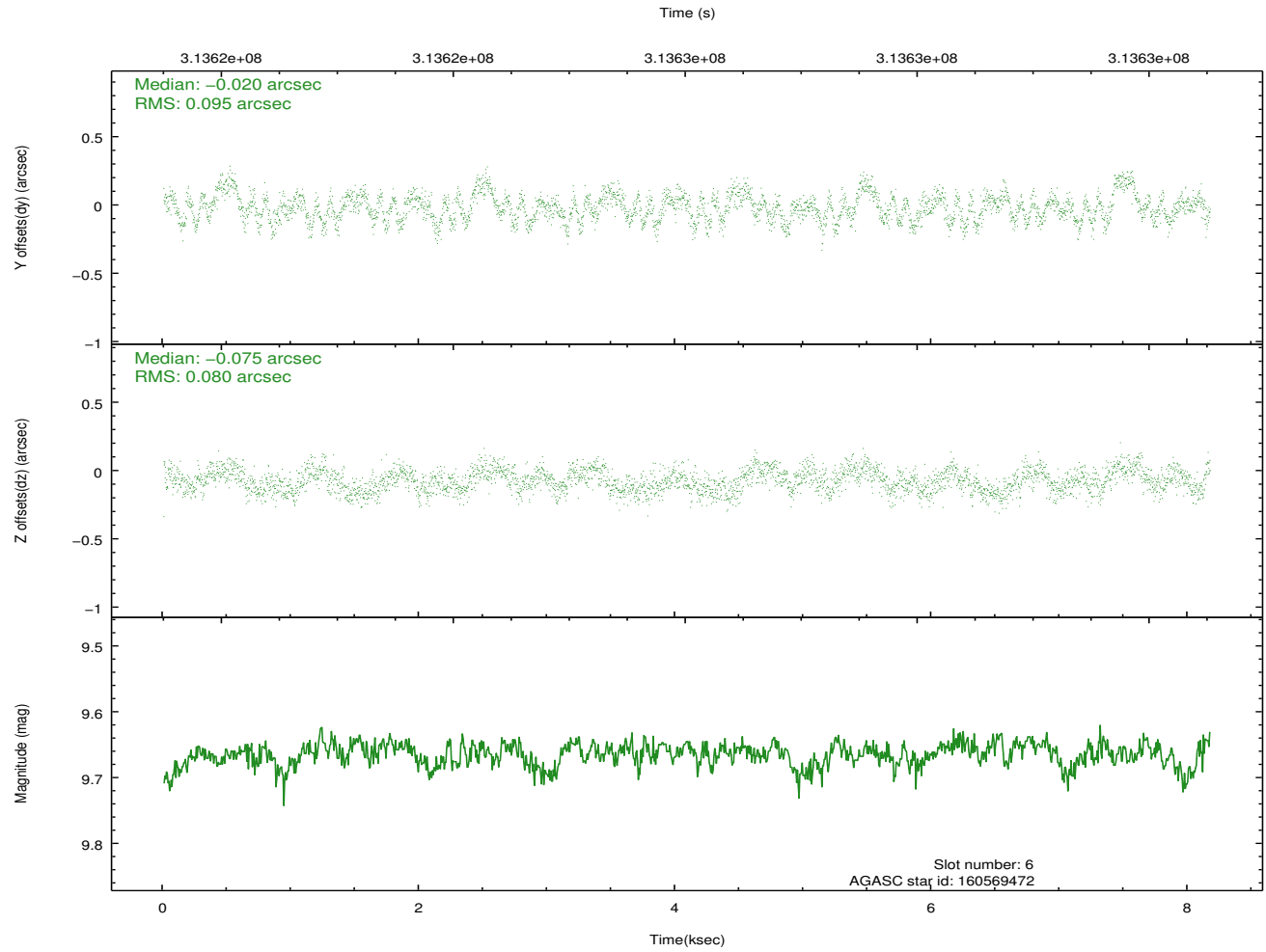
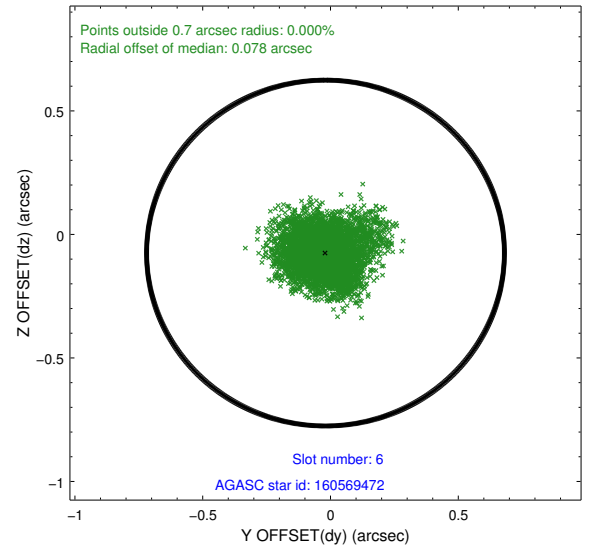
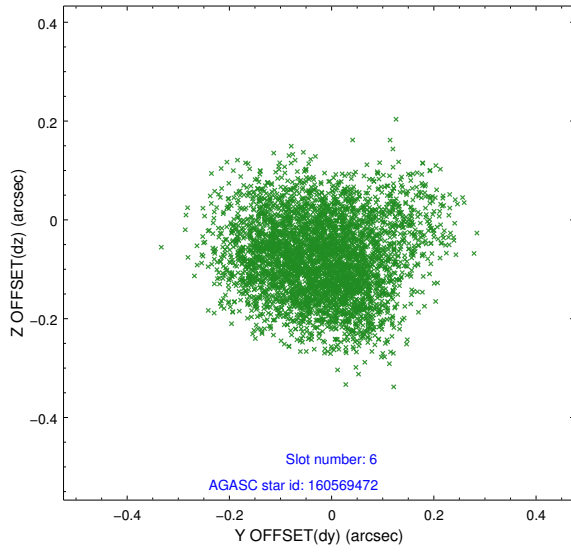
2.4.2 Slot 4



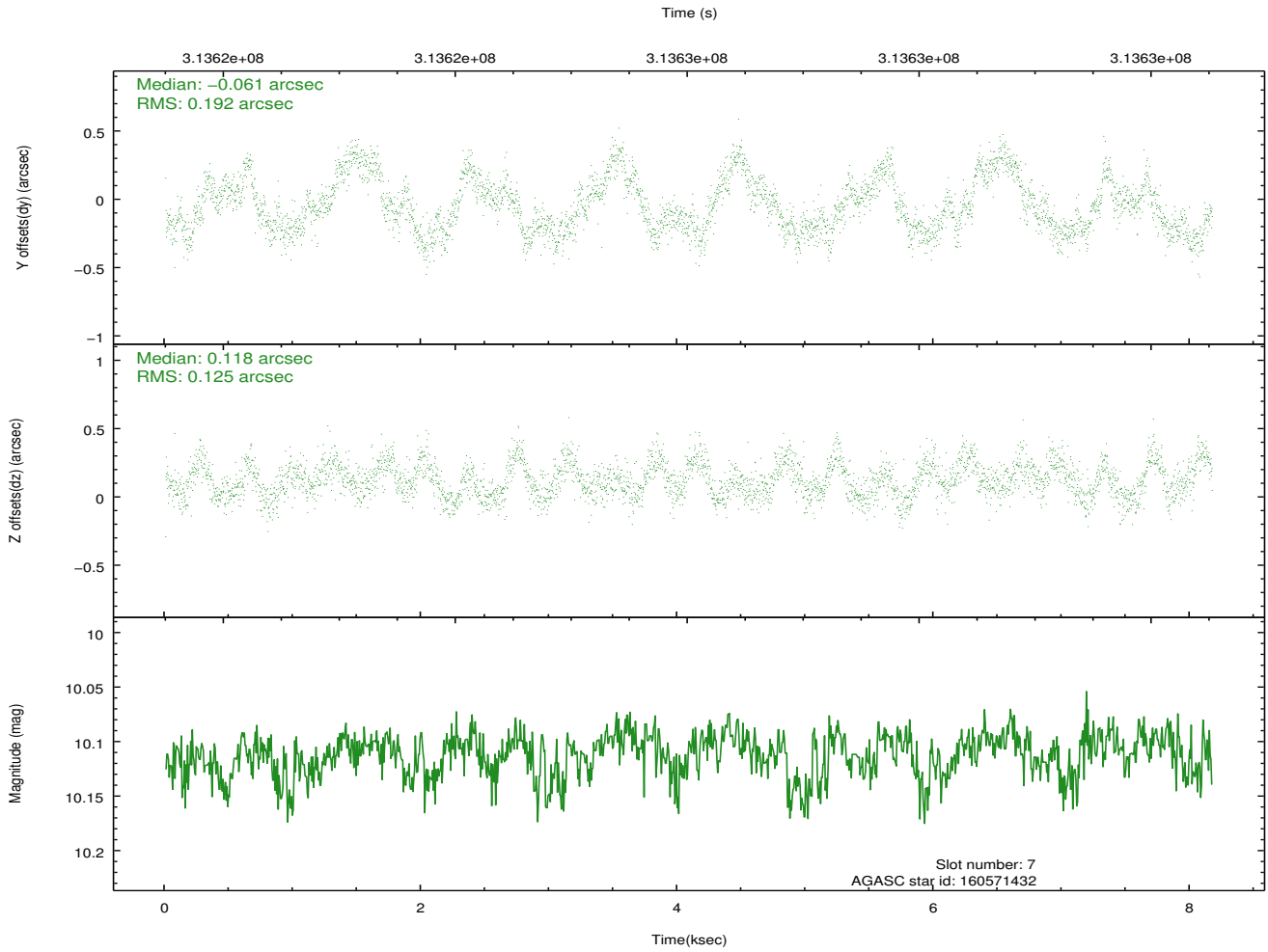
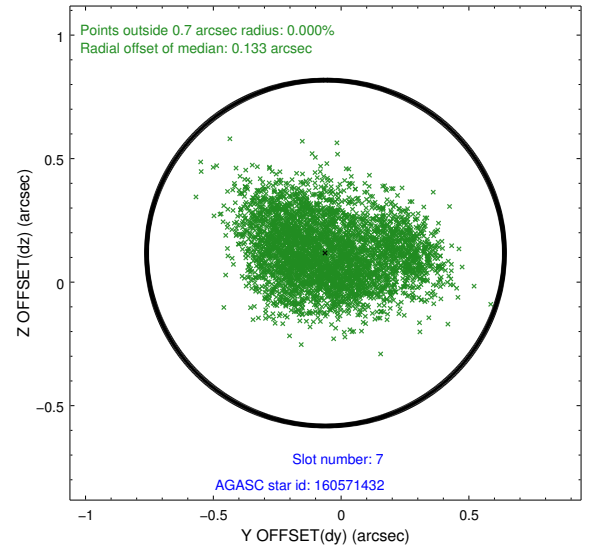
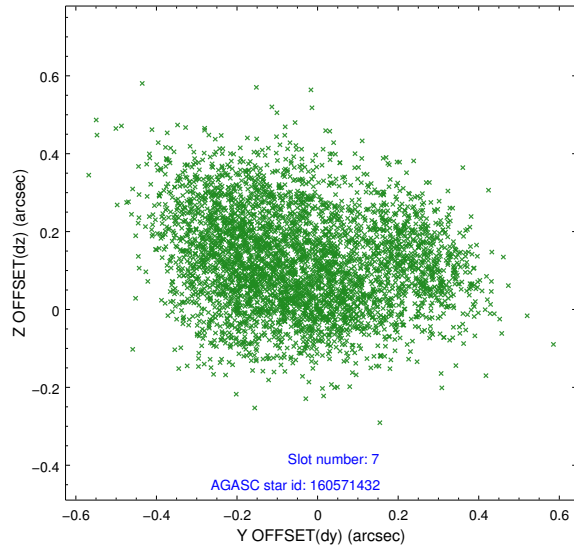
2.4.3 Slot 5



2.4.4 Slot 6

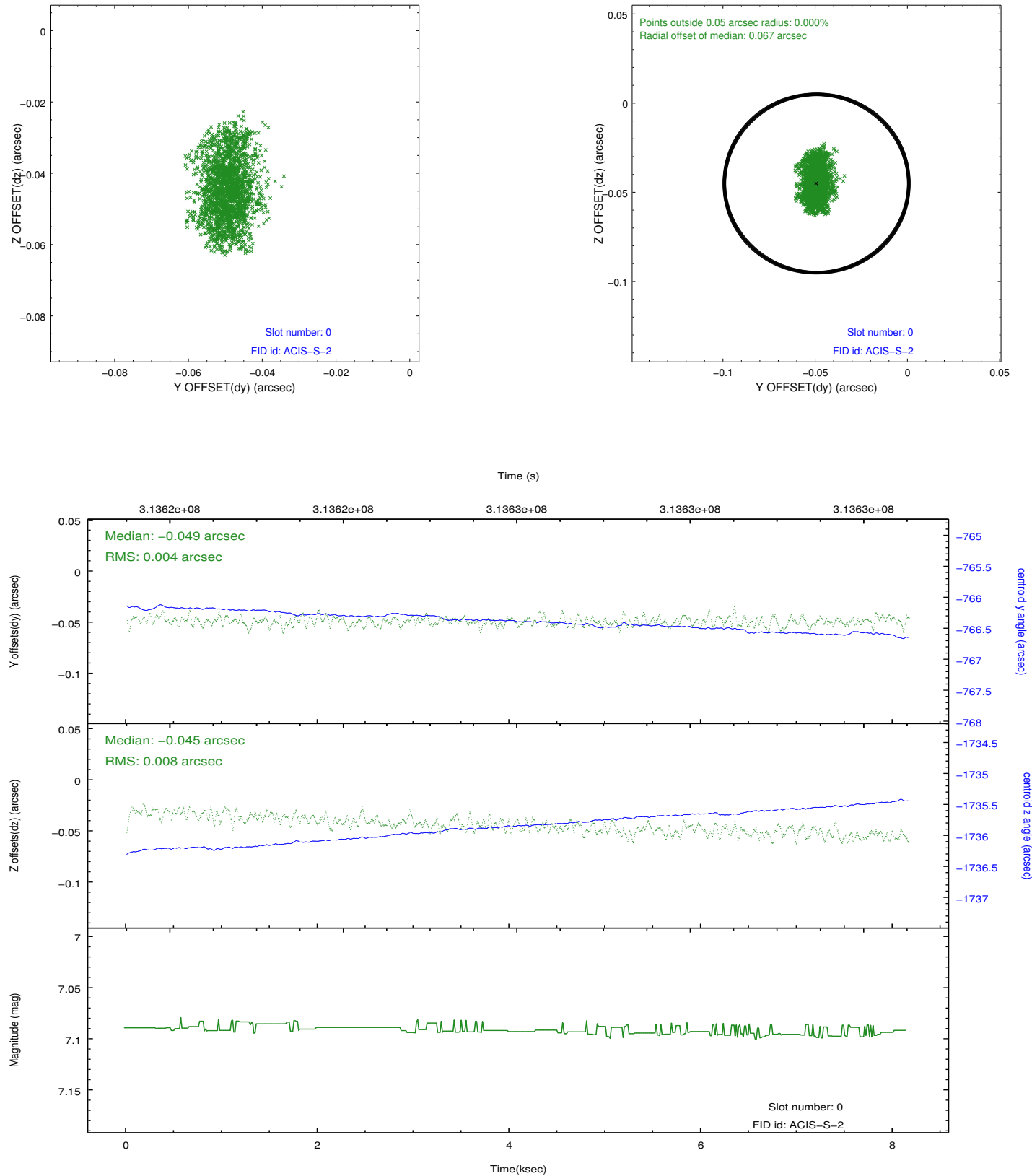


2.4.5 Slot 7

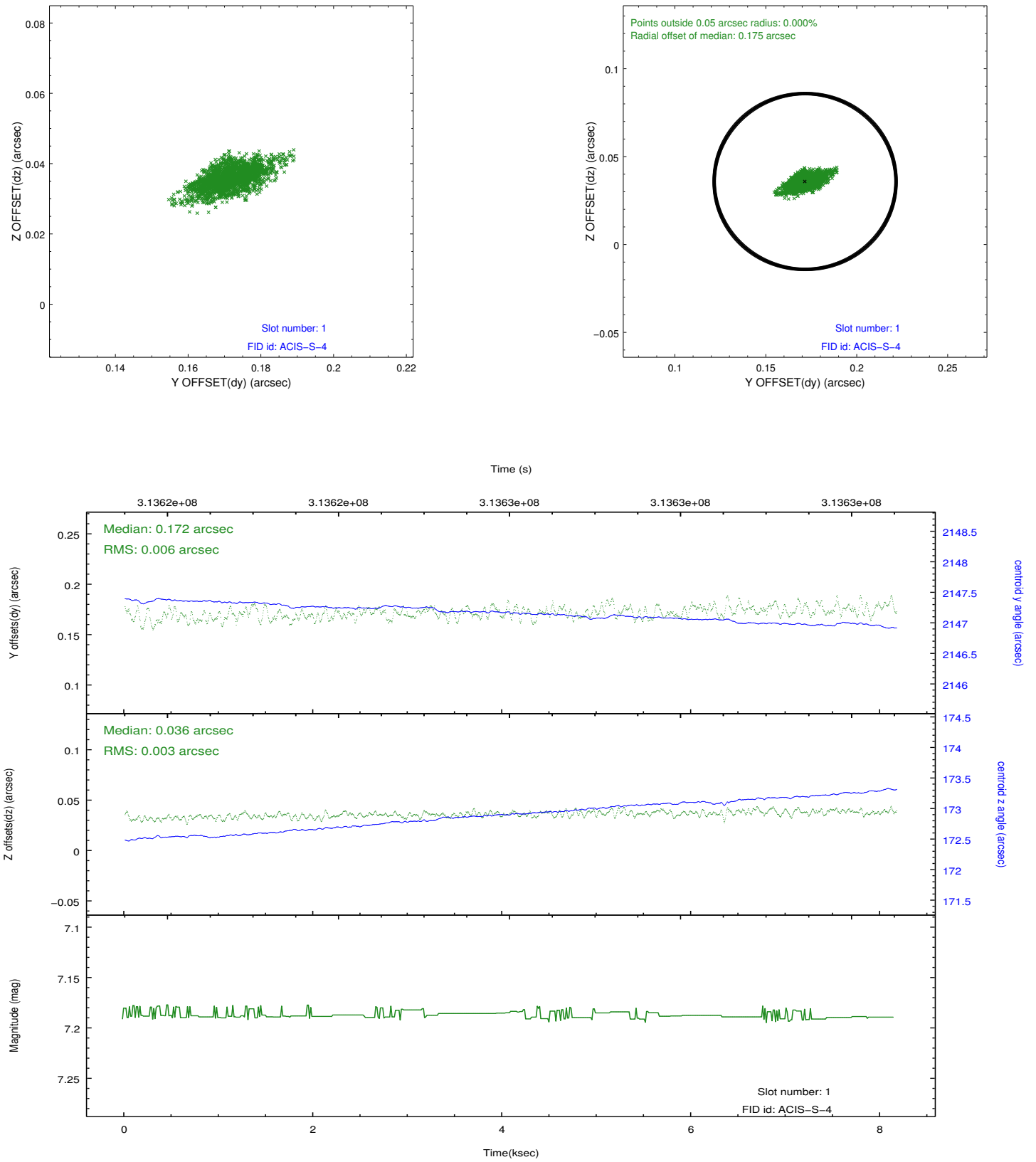


2.5 FID Slots

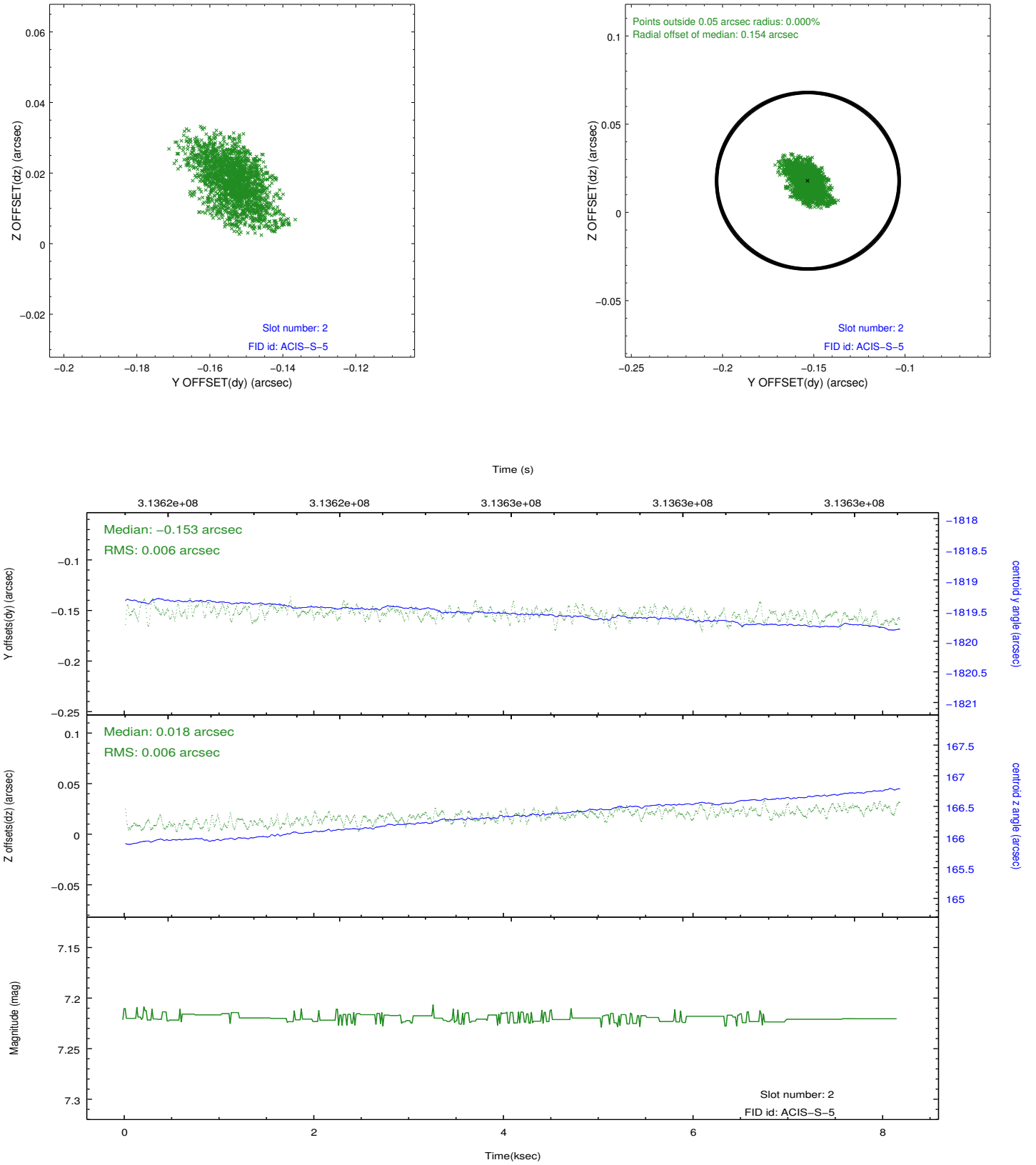
2.5.1 Slot 0



2.5.2 Slot 1



2.5.3 Slot 2



A Summary

A.1 Status

V&V Scientist	Jen Lauer
V&V Date (YYYY-MM-DD)	2012.05.08
V&V Edition	1
V&V Disposition and Status	OK
V&V Charge Time	8.16230006

A.2 Comments