

V&V Reference Report

L2 ASCDS Version : 8.4.4

Observation 9287 - L2 Version 2
Chandra X-Ray Center

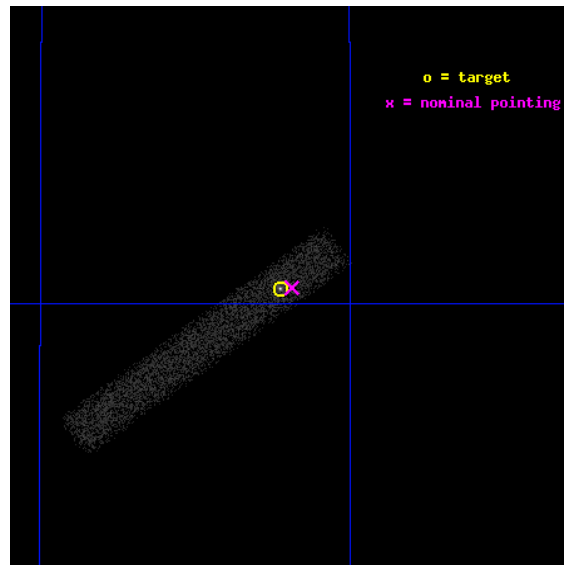
L2 Processing Date : May 13 2012

Contents

1	Front	2
2	OBI	3
2.1	OBI	3
2.1.1	Images	3
2.1.2	Bias	3
2.1.3	Parameters	4
2.1.4	Events	4
2.2	Compared Parameters	5
2.3	Aspect	6
2.4	Star Slots	9
2.4.1	Slot 3	9
2.4.2	Slot 4	10
2.4.3	Slot 5	11
2.4.4	Slot 6	12
2.4.5	Slot 7	13
2.5	FID Slots	14
2.5.1	Slot 0	14
2.5.2	Slot 1	15
2.5.3	Slot 2	16
A	Summary	17
A.1	Status	17
A.2	Comments	17

1 Front

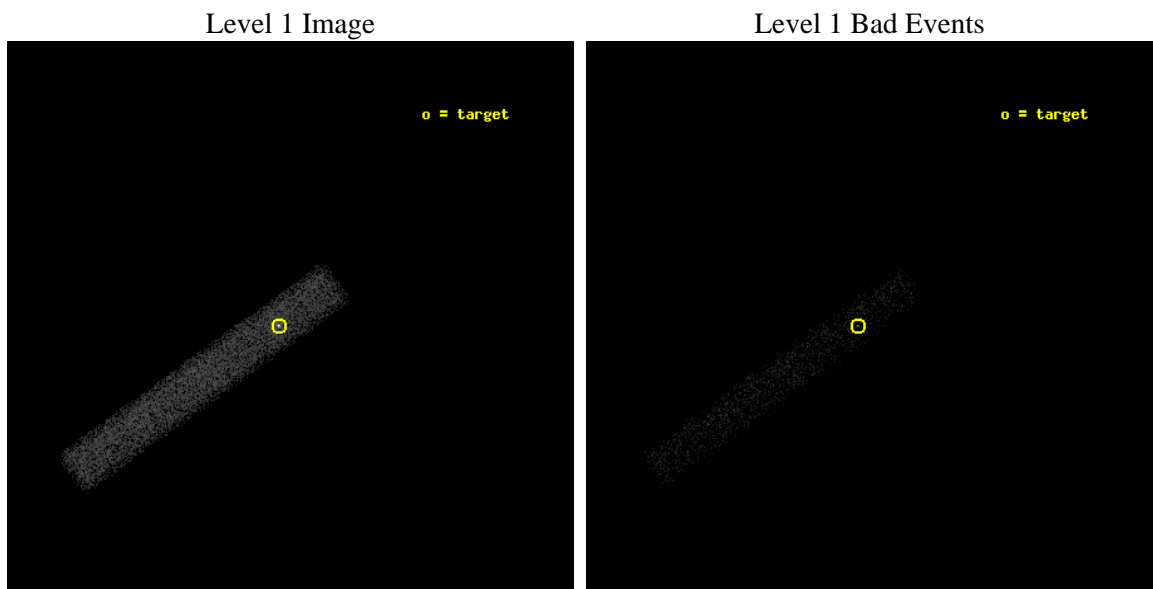
seq_num	701727	Sequence number
obs_id	9287	Observation id
title	Surveying X-ray Jets in Superluminal Blazars	Proposal title
observer	Dr. Matthew Lister	Principal investigator
object	1637+574	Source name
dtcycle	0	
cycle	P	events from which exps? Prim/Second/Both
ra_targ	249.555833	Observer's specified target RA [deg]
dec_targ	57.339972	Observer's specified target Dec [deg]
ra_nom	249.54685572906	Nominal RA [deg]
dec_nom	57.340369777767	Nominal Dec [deg]
roll_nom	144.2603606041	Nominal Roll [deg]
revision	2	Processing version of data
ontime	10183.59939301	Sum of GTIs [s]
livetime	9235.9871150101	Livetime [s]
ontime7	10183.59939301	Sum of GTIs [s]
l2events	11396	Number of level 2 events



2 OBI

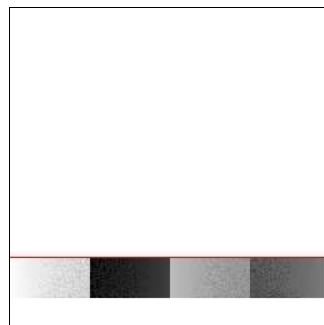
2.1 OBI

2.1.1 Images



2.1.2 Bias

Chip 7



2.1.3 Parameters

obi_num	0	Obi number	sched_exp_time	9999.353000	[s] Scheduled observation exposure time
ascdsver	8.4.4	Processing system revision	ontime	10183.59939301	Sum of GTIs [s]
caldsver	4.4.9	 	ontime7	10183.59939301	Sum of GTIs [s]
date	2012-05-13T12:36:09	Date and time of file creation	l1events	21376	Number of level 1 events
revision	2	Processing version of data			

2.1.4 Events

	ccd 7
level 1 events	21376
rejected events	9737
rejected %	45%

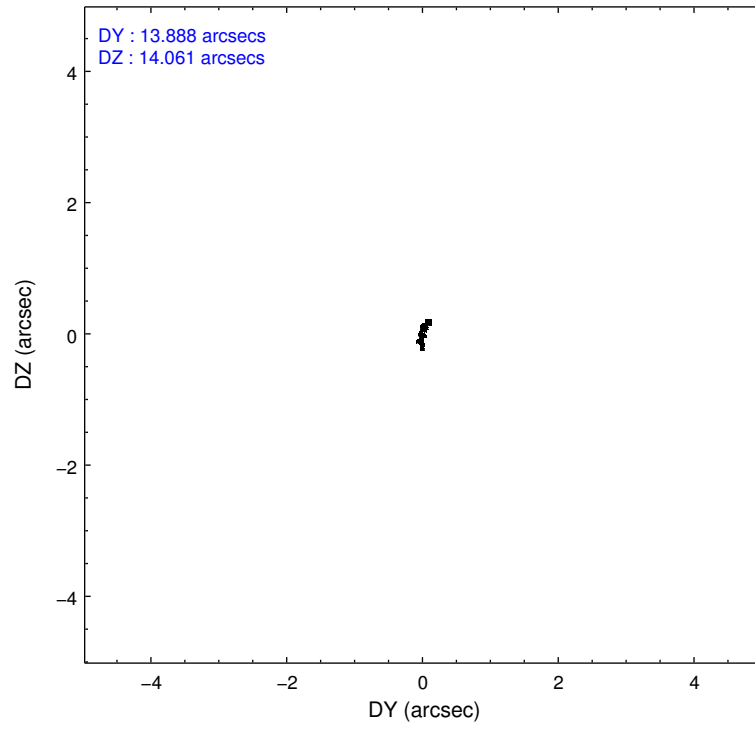
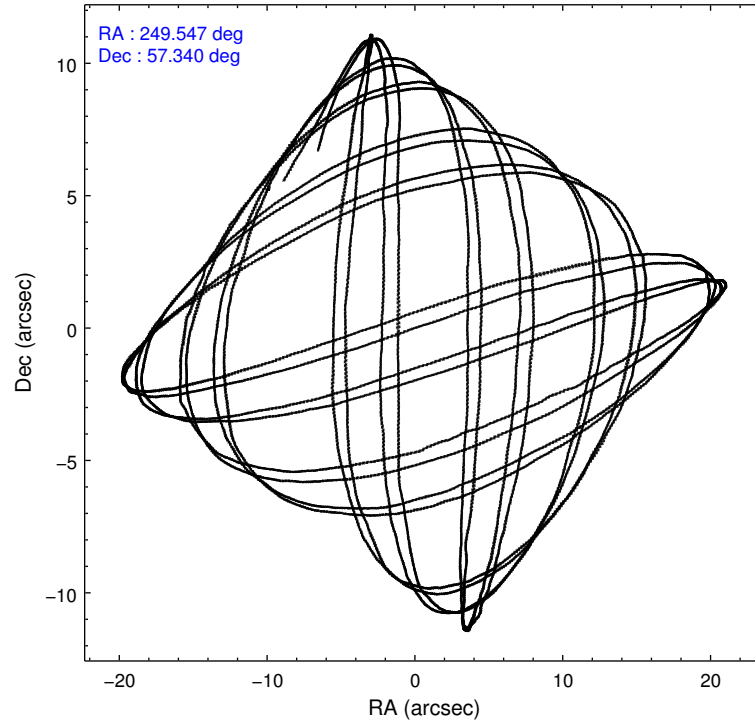
	ccd 7
grade 0 events	1731
	8%
grade 1 events	35
	0%
grade 2 events	2483
	11%
grade 3 events	1471
	6%
grade 4 events	1354
	6%
grade 5 events	1603
	7%
grade 6 events	4871
	22%
grade 7 events	7828
	36%

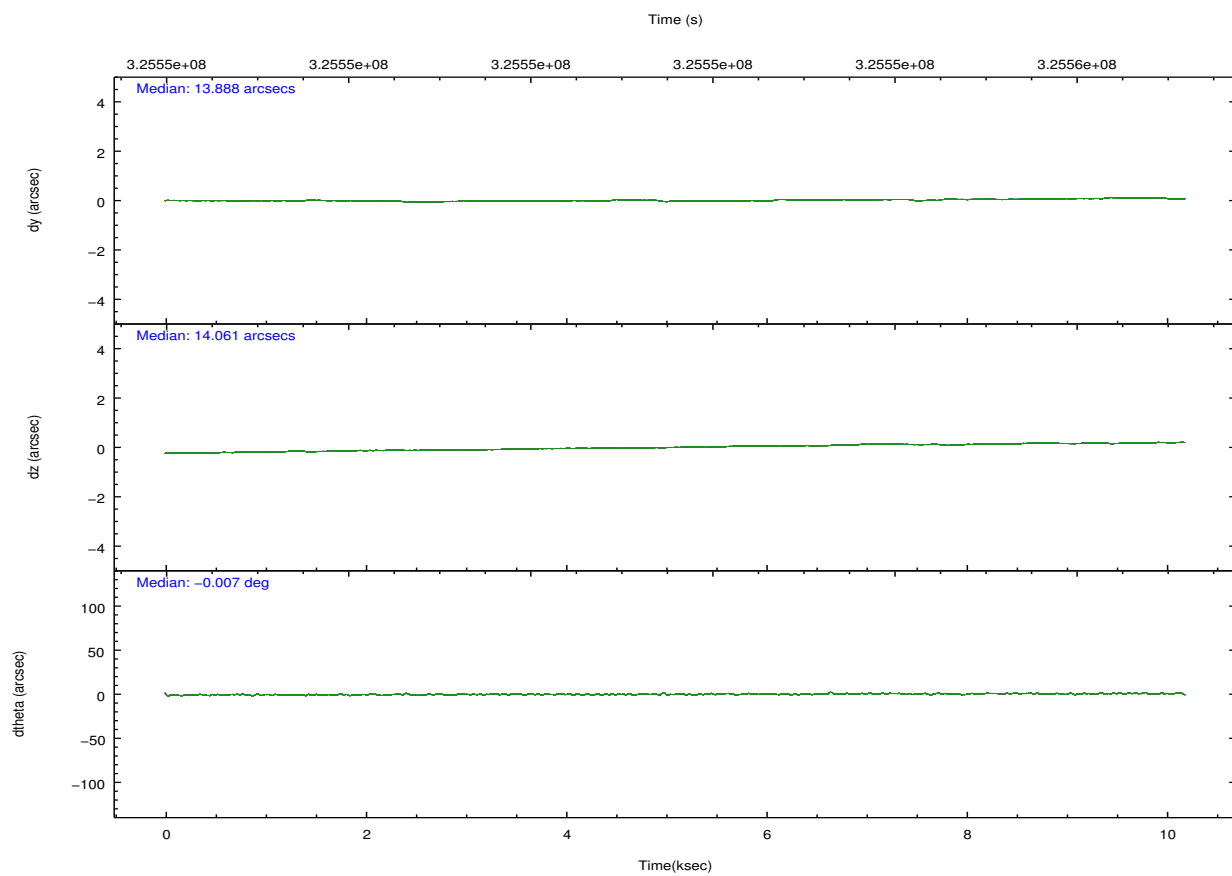
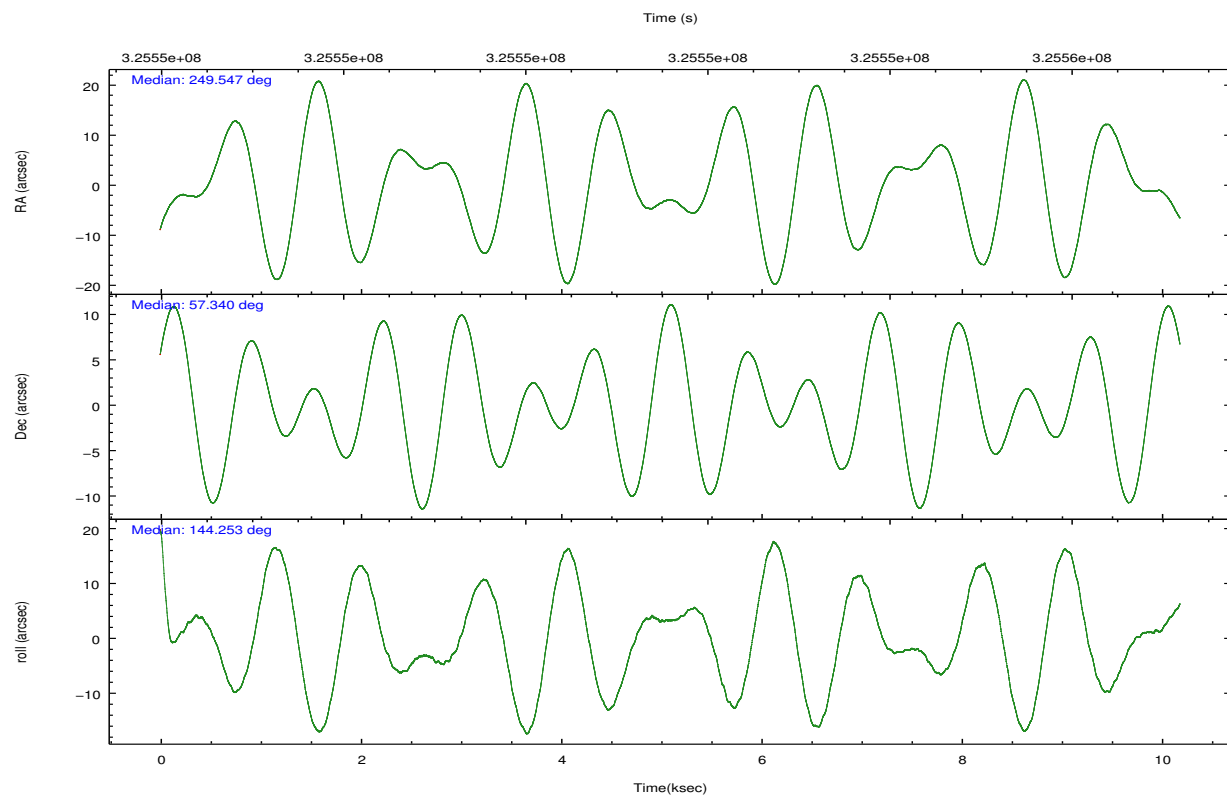
2.2 Compared Parameters

Parameter	Planned	Actual
Instrument	ACIS	ACIS
Detector	ACIS-7	ACIS-7
Grating	NONE	NONE
Data mode	VFAINT	VFAINT
Observation mode	POINTING	POINTING
[deg] Pointing RA	249.597341	249.5468557290569
[deg] Pointing Dec	57.337932	57.34036977776734
[deg] Pointing Roll	144.061211	144.2603606041047
[mm] SIM focus pos	-0.684267	-0.6828225247311905
[mm] SIM defocus	0	0.001444936568705701
[mm] SIM translation stage pos	-181.422523	-181.4329921605696
[mm] SIM translation stage offset	-8.710000000000001	-8.699530422438215
[s] Observation start time (MET)	325546670.184000	325545890.81428
Observation start date	2008-04-25T21:36:45	2008-04-25T21:24:50
[s] Observation end time (MET)	325556669.184000	325556884.45232
Observation end date	2008-04-26T00:23:24	2008-04-26T00:28:04
Read mode	TIMED	TIMED

Parameter	Planned	Actual
Obspar format version number	7	7
Obspar file type	PREDICTED	ACTUAL
Obspar update status	NONE	UPDATED
Number of optional ACIS chips dropped	0	0
On-chip summing requested	N	N
Subarray requested	CUSTOM	1/8
Subarray start row	100	100
Subarray row count	128	128
Alternating exposures requested	N	N
[s] Primary exposure time	0.000000	0.4

2.3 Aspect



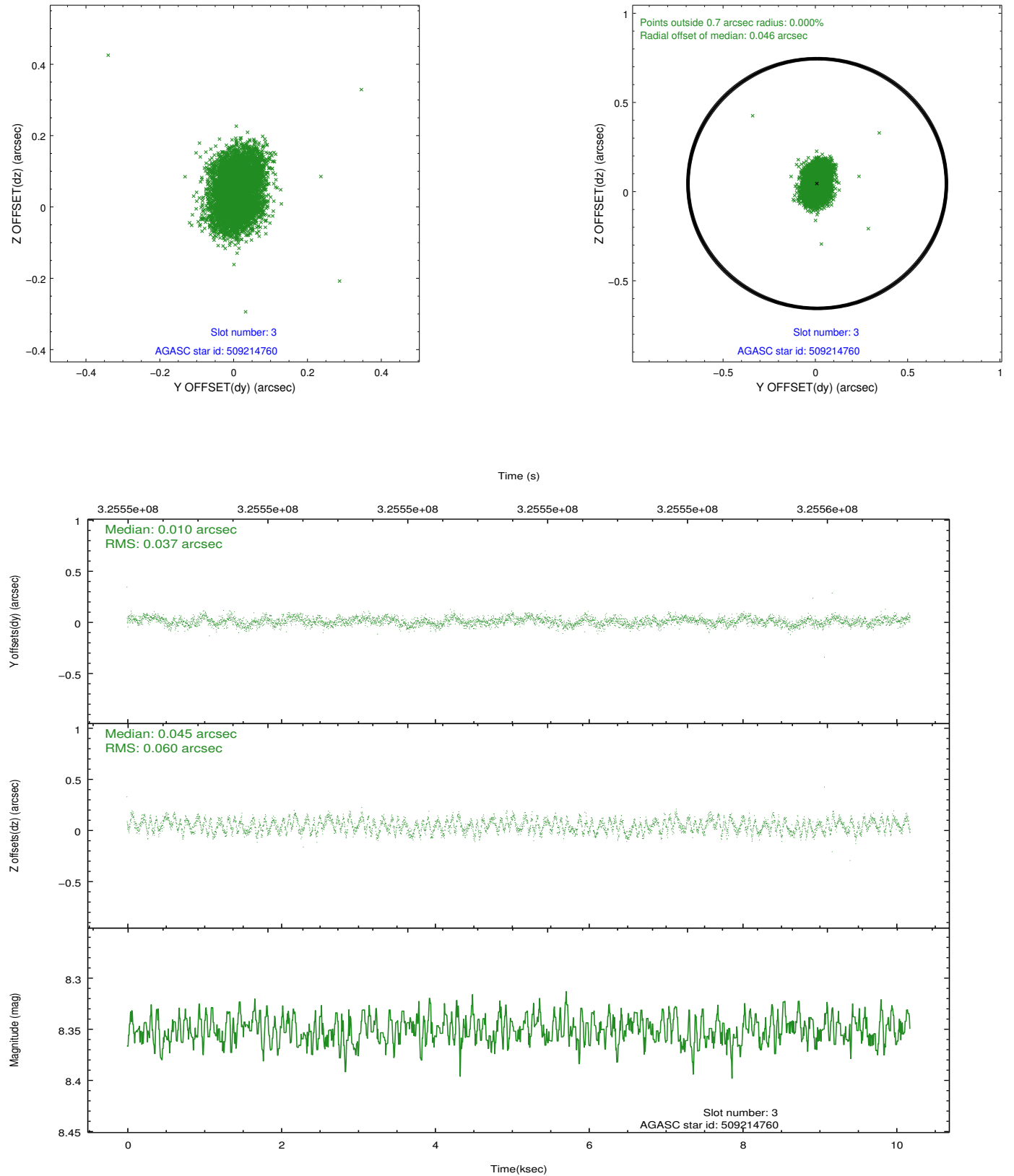


Slot Statistics

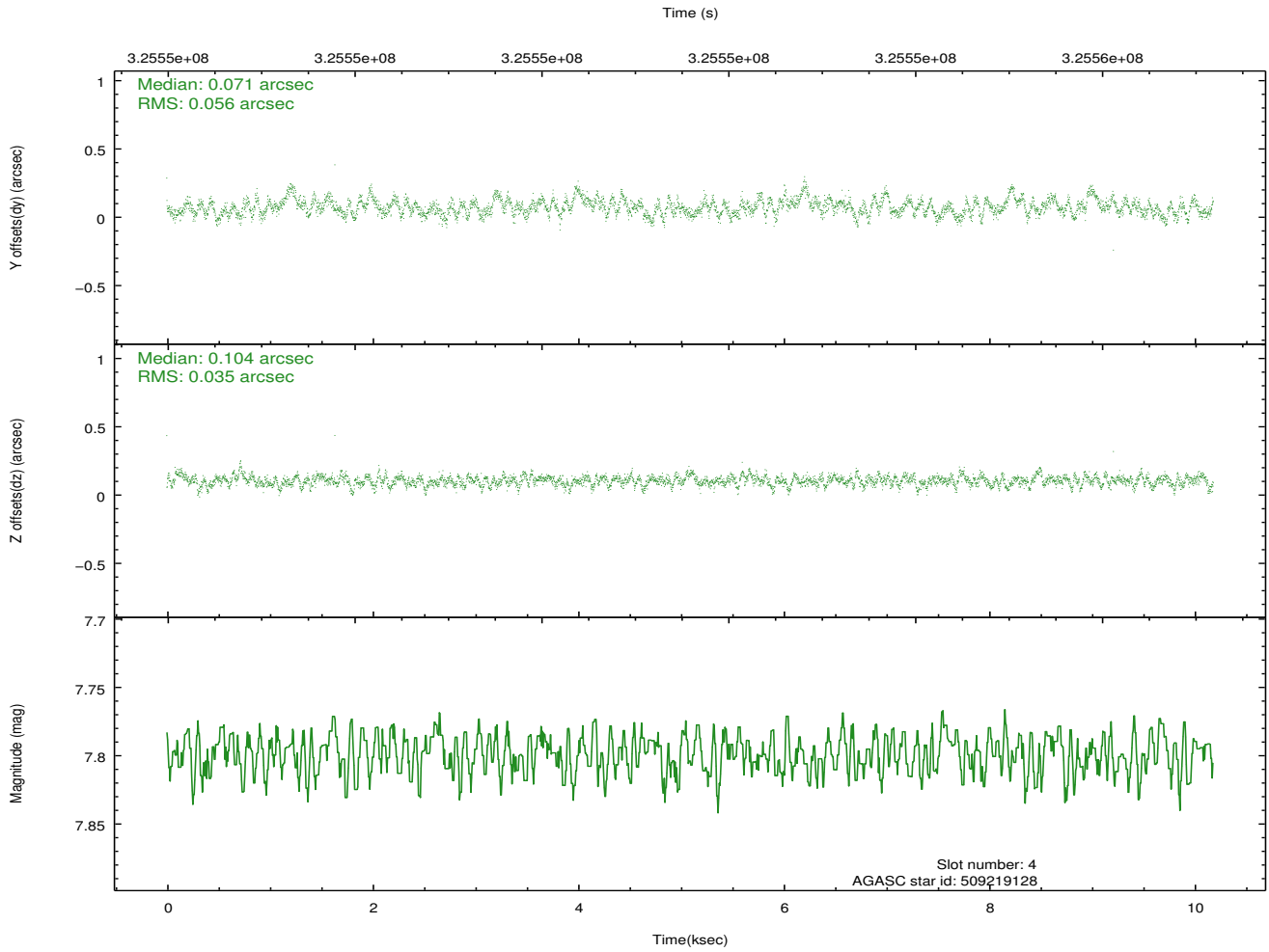
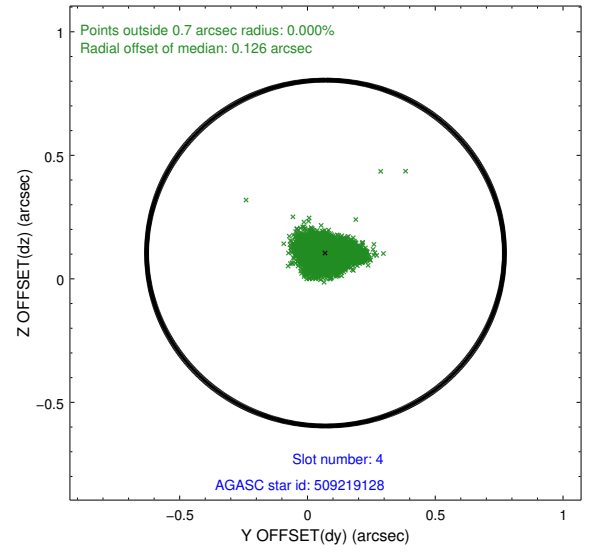
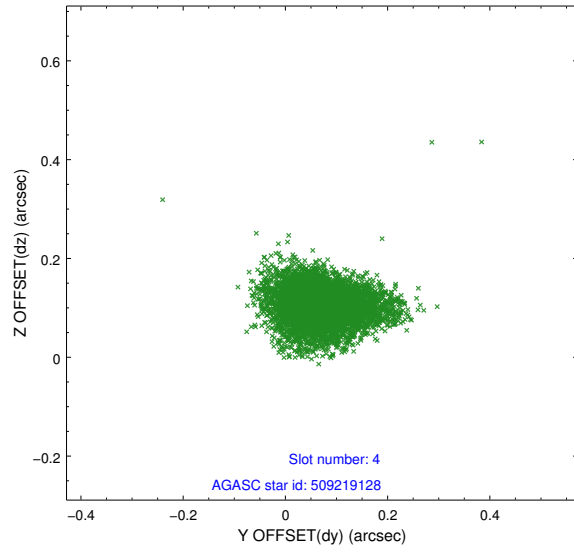
slot	status	id	mag	n_pts	med_dy	med_dz	dr1	dr2	ra	dec	mean_y	mean_z
0	FID	ACIS-S-1	7.04	2485	0.083	0.160	0.010	0.017	0.000000	0.000000	929.98	-1910.04
1	FID	ACIS-S-2	6.95	2484	-0.179	-0.110	0.008	0.012	0.000000	0.000000	-765.90	-1915.53
2	FID	ACIS-S-6	7.25	2485	0.076	-0.047	0.007	0.012	0.000000	0.000000	395.30	630.45
3	GUIDE	509214760	8.35	4966	0.010	0.045	0.075	0.119	250.589992	57.556199	-1082.37	-1772.33
4	GUIDE	509219128	7.80	4969	0.071	0.104	0.069	0.117	248.921955	57.781124	1989.47	-535.68
5	GUIDE	508699368	8.57	4968	-0.074	-0.250	0.086	0.135	248.778246	56.937415	462.10	2103.89
6	GUIDE	509228680	8.66	4967	0.051	-0.030	0.096	0.163	249.505439	58.204814	1973.52	-2423.62
7	GUIDE	509227784	9.24	4963	-0.056	0.136	0.108	0.178	250.982124	57.635413	-1515.15	-2455.42

2.4 Star Slots

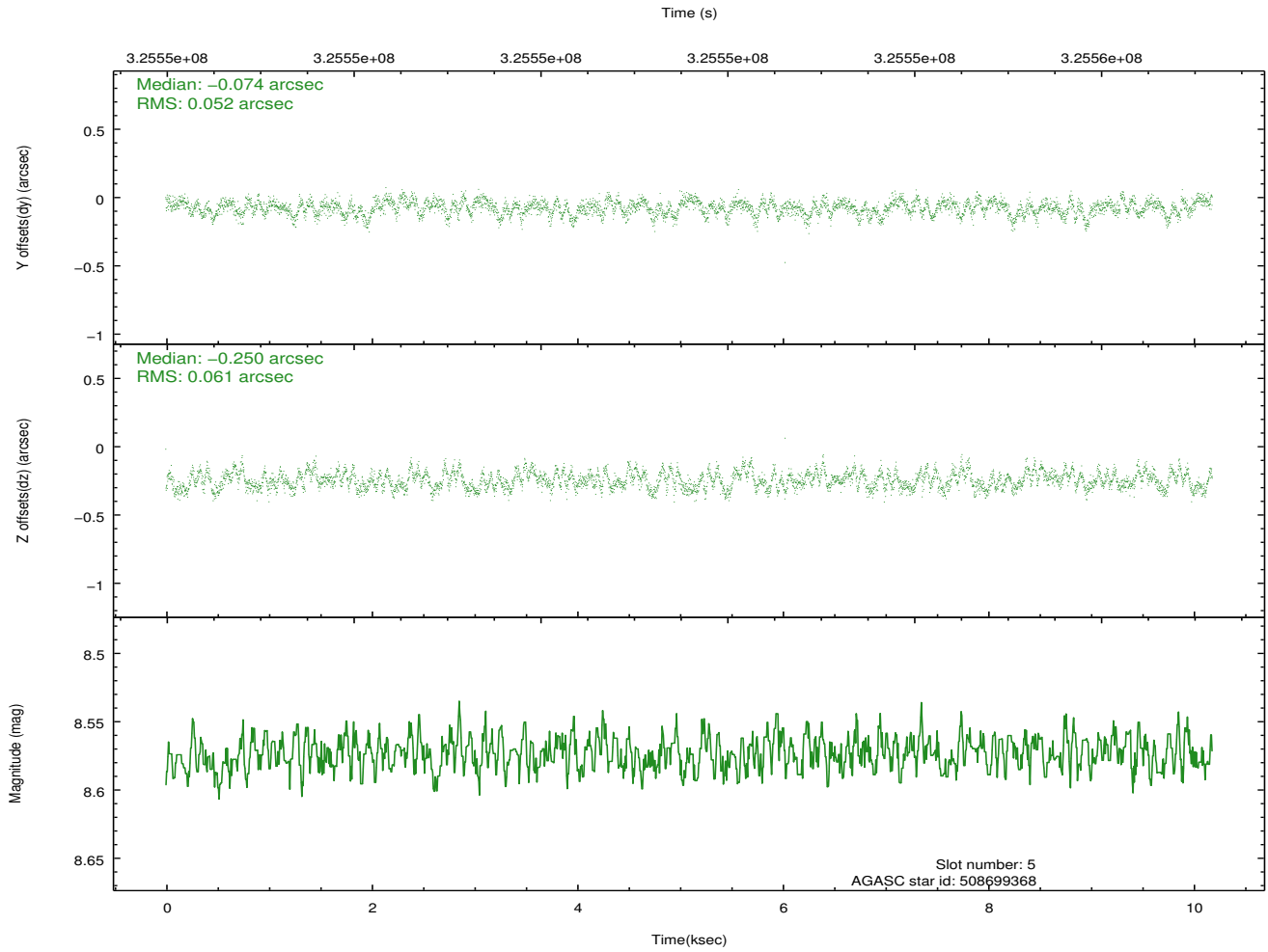
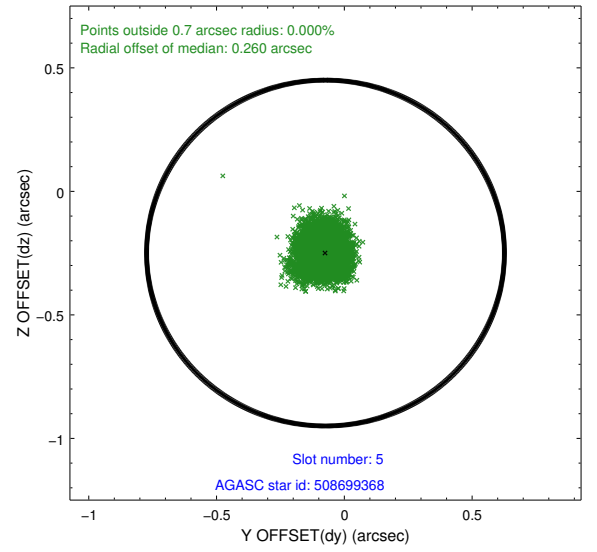
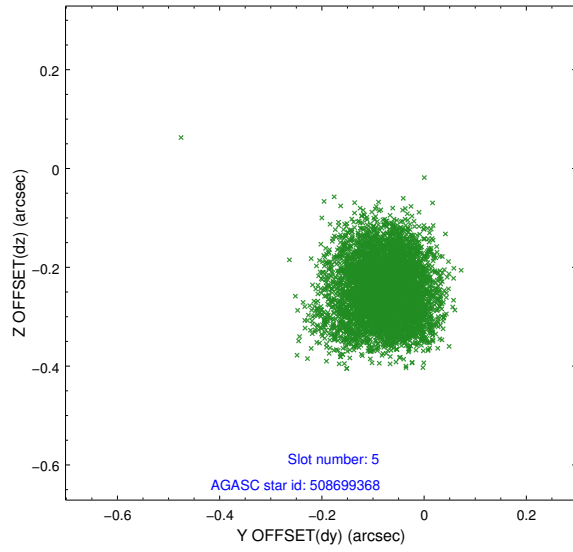
2.4.1 Slot 3



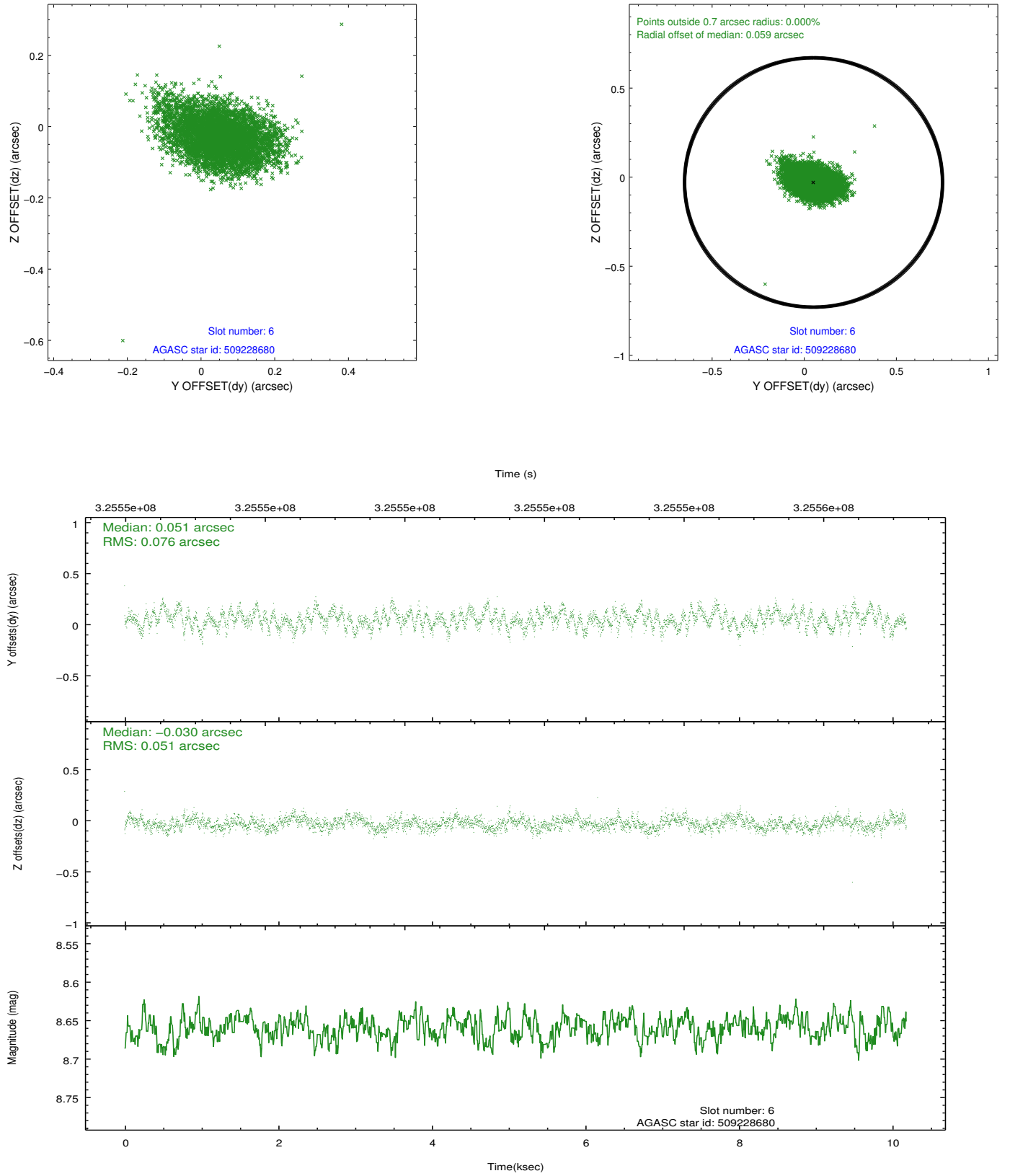
2.4.2 Slot 4



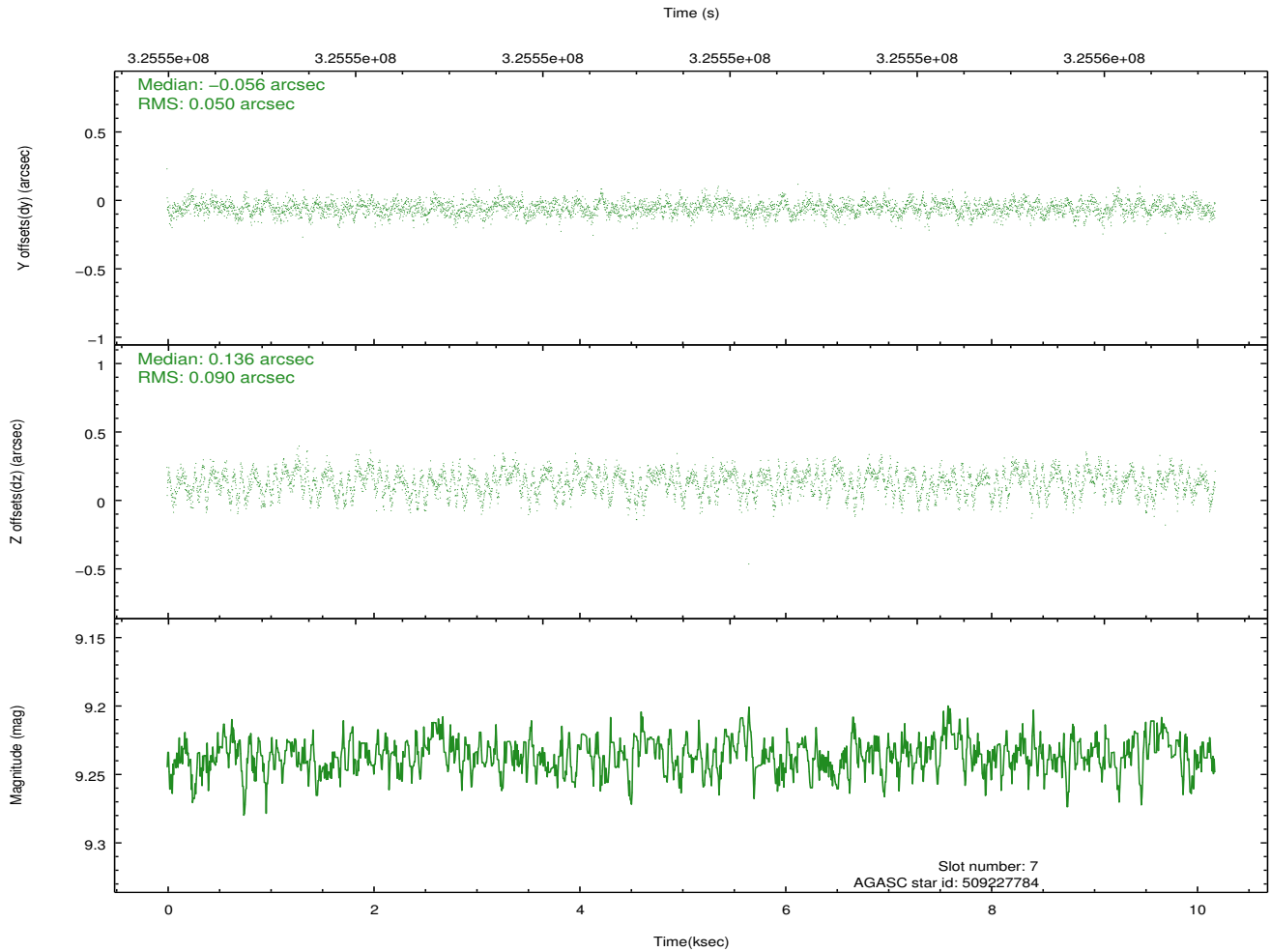
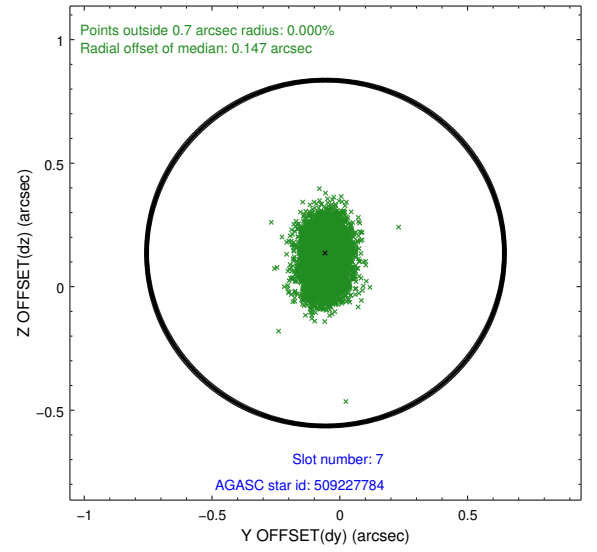
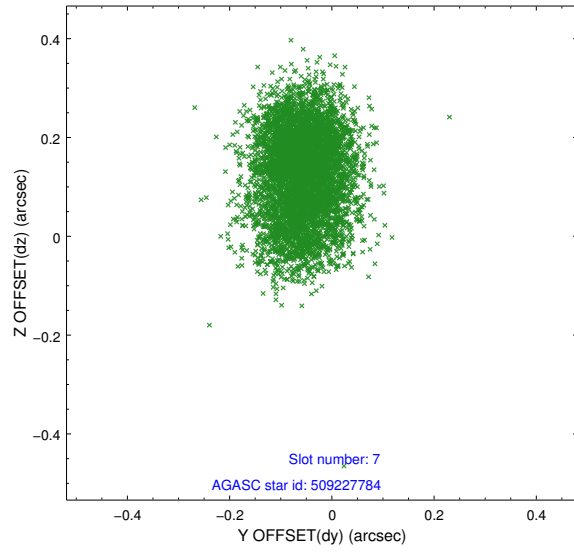
2.4.3 Slot 5



2.4.4 Slot 6

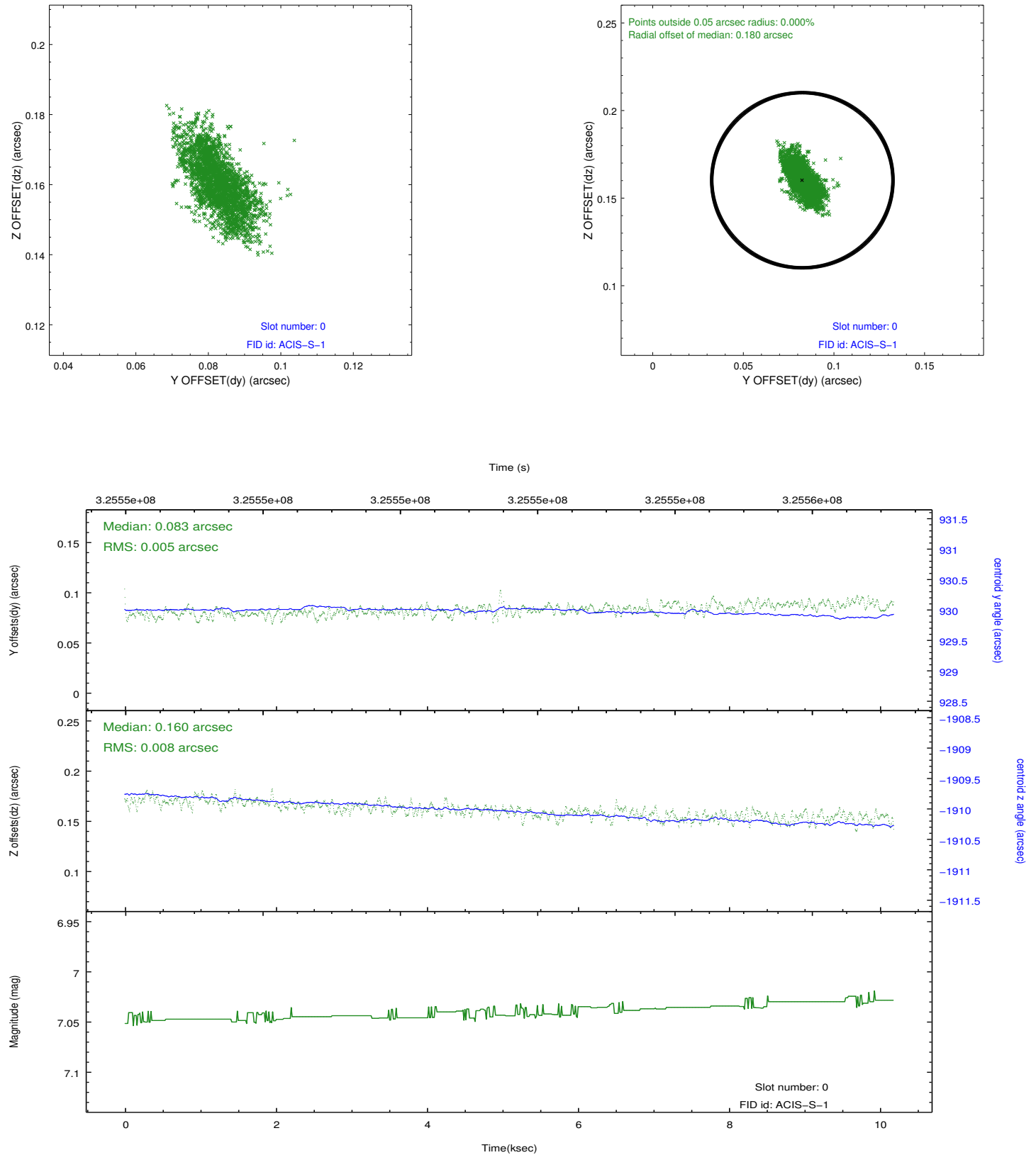


2.4.5 Slot 7

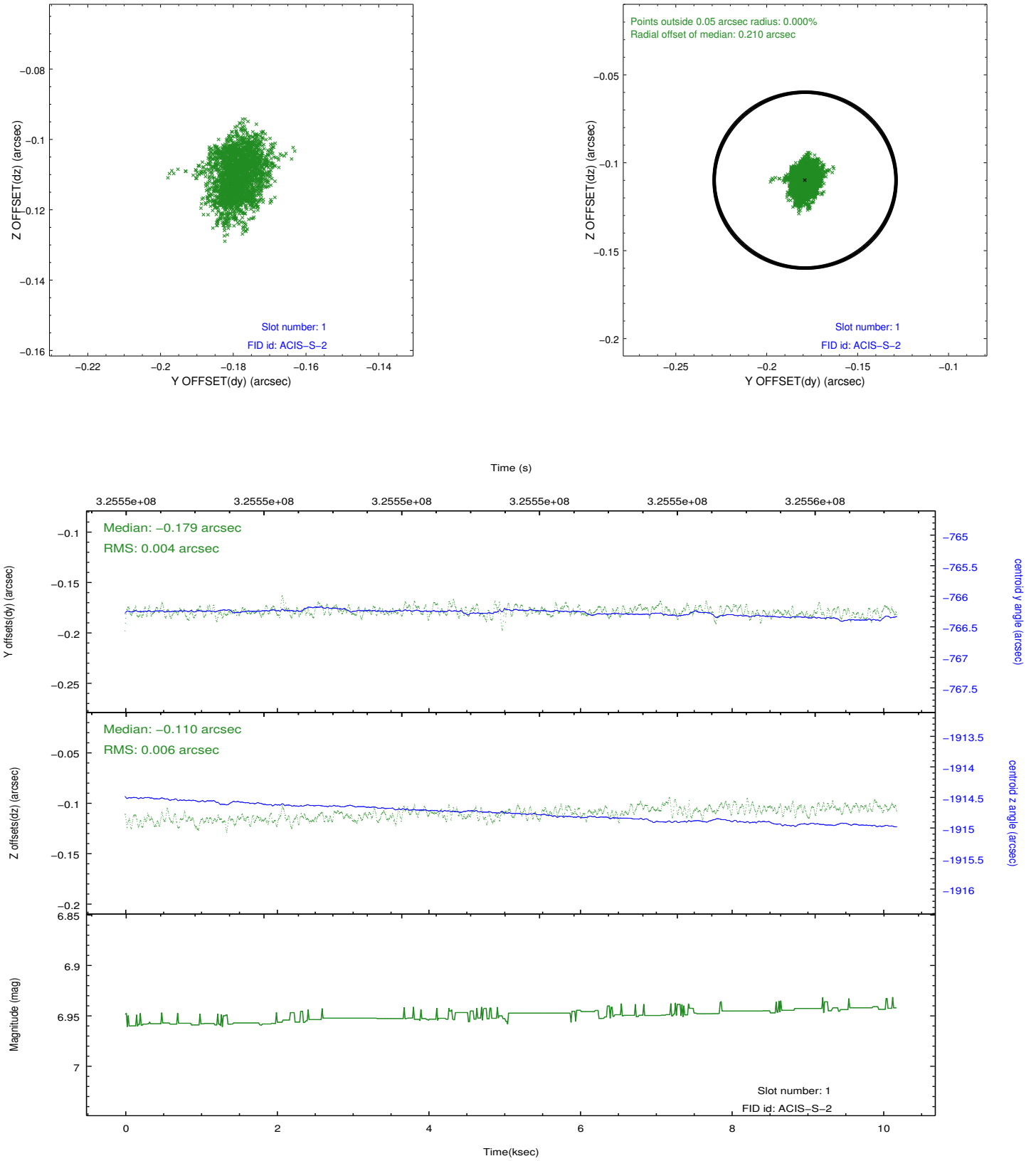


2.5 FID Slots

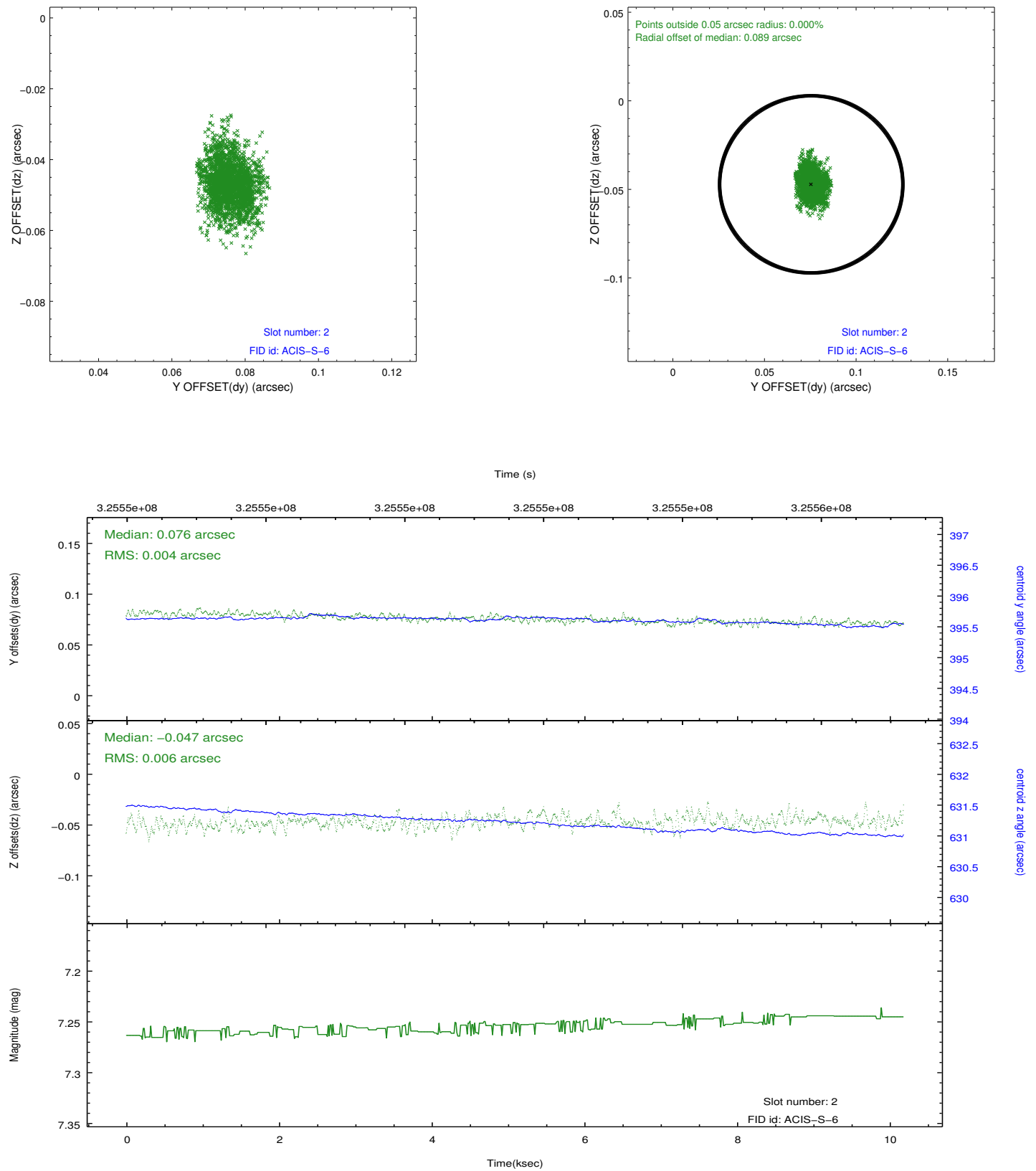
2.5.1 Slot 0



2.5.2 Slot 1



2.5.3 Slot 2



A Summary

A.1 Status

V&V Scientist	Beth Sundheim
V&V Date (YYYY-MM-DD)	2012.05.15
V&V Edition	1
V&V Disposition and Status	OK
V&V Charge Time	10.1835993

A.2 Comments