

V&V Reference Report

L2 ASCDS Version : 8.4.4

Observation 9278 - L2 Version 2
Chandra X-Ray Center

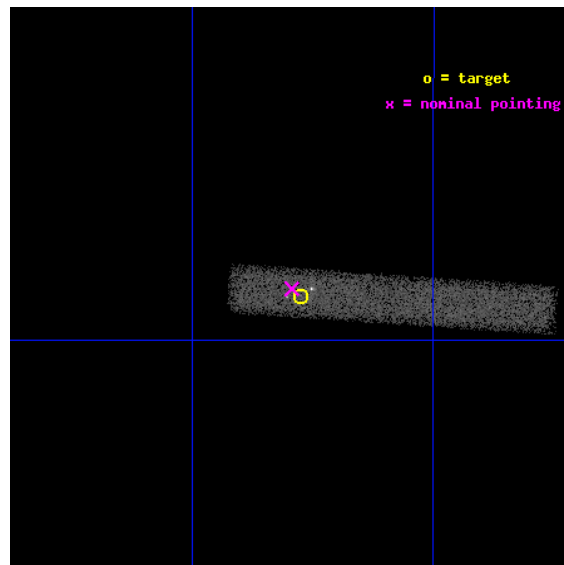
L2 Processing Date : May 10 2012

Contents

1	Front	2
2	OBI	3
2.1	OBI	3
2.1.1	Images	3
2.1.2	Bias	3
2.1.3	Parameters	4
2.1.4	Events	4
2.2	Compared Parameters	5
2.3	Aspect	6
2.4	Star Slots	9
2.4.1	Slot 3	9
2.4.2	Slot 4	10
2.4.3	Slot 5	11
2.4.4	Slot 6	12
2.4.5	Slot 7	13
2.5	FID Slots	14
2.5.1	Slot 0	14
2.5.2	Slot 1	15
2.5.3	Slot 2	16
A	Summary	17
A.1	Status	17
A.2	Comments	17

1 Front

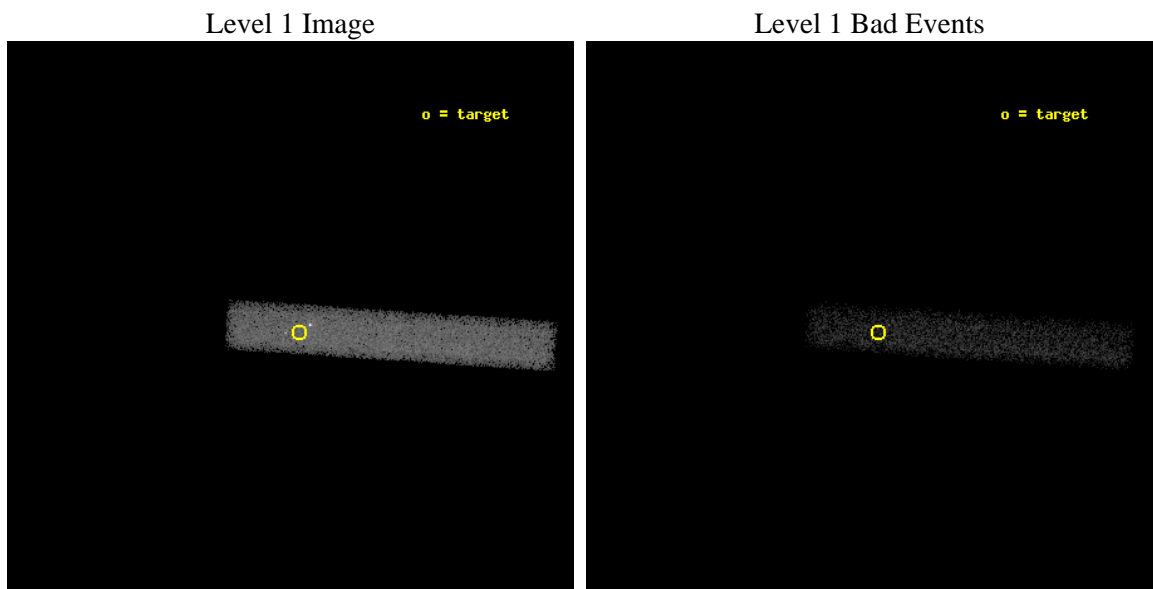
seq_num	701718	Sequence number
obs_id	9278	Observation id
title	The Chandra view of NGC~3621: A bulgeless galaxy hosting an AGN?	P
observer	Dr. Mario Gliozzi	Principal investigator
object	NGC3621	Source name
dtcycle	0	
cycle	P	events from which exps? Prim/Second/Both
ra_targ	169.56875	Observer's specified target RA [deg]
dec_targ	-32.814167	Observer's specified target Dec [deg]
ra_nom	169.57346430289	Nominal RA [deg]
dec_nom	-32.811349357097	Nominal Dec [deg]
roll_nom	3.8005833789094	Nominal Roll [deg]
revision	2	Processing version of data
ontime	23367.198607206	Sum of GTIs [s]
livetime	21192.815714862	Livetime [s]
ontime7	23367.198607206	Sum of GTIs [s]
l2events	21920	Number of level 2 events



2 OBI

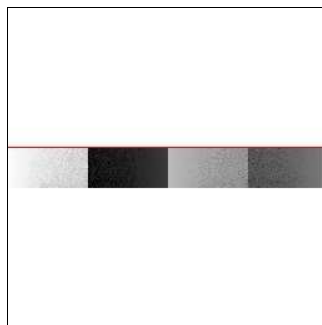
2.1 OBI

2.1.1 Images



2.1.2 Bias

Chip 7



2.1.3 Parameters

obi_num	0	Obi number	sched_exp_time	23185.672000	[s] Scheduled observation exposure time
ascdsver	8.4.4	Processing system revision	ontime	23367.198607206	Sum of GTIs [s]
caldsver	4.4.9	 	ontime7	23367.198607206	Sum of GTIs [s]
date	2012-05-10T22:56:26	Date and time of file creation	l1events	46511	Number of level 1 events
revision	2	Processing version of data			

2.1.4 Events

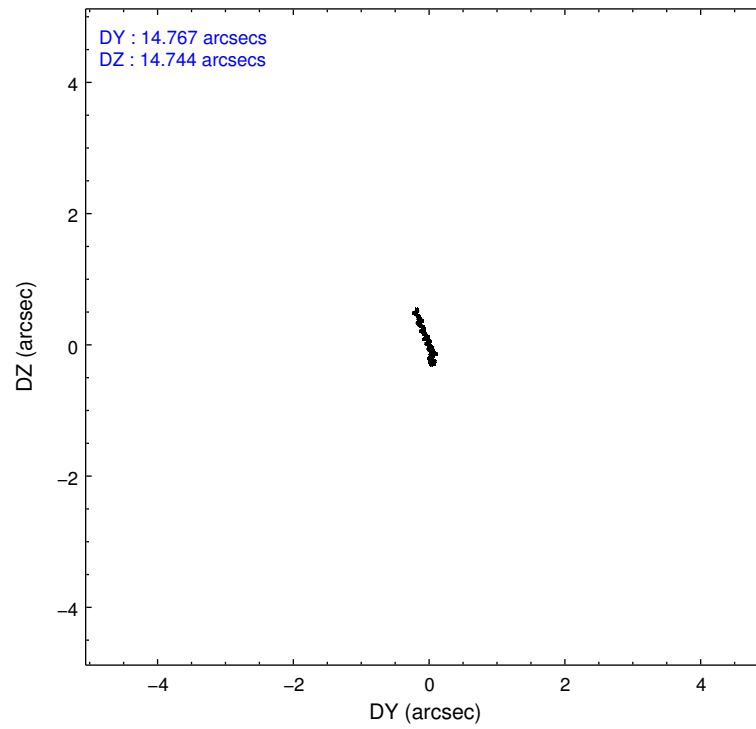
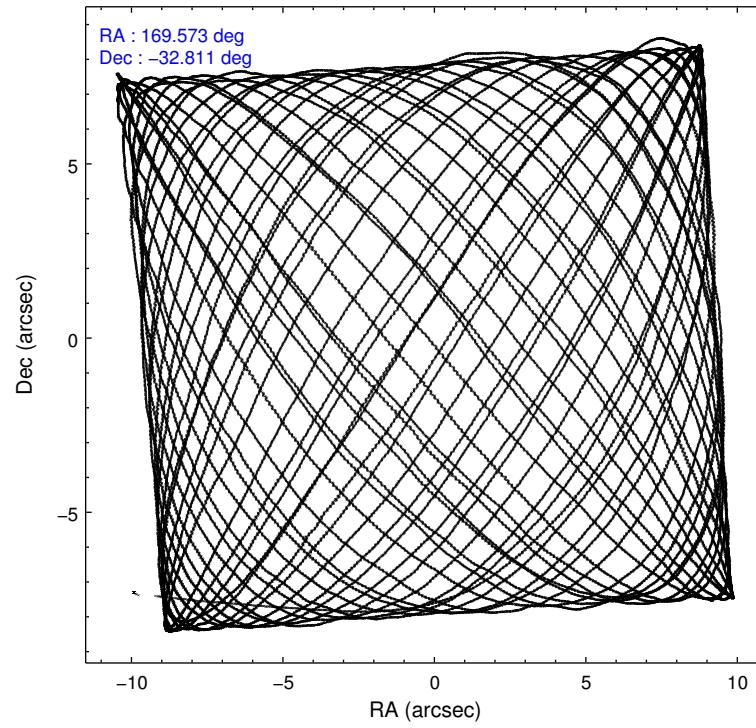
	ccd 7
level 1 events	46511
rejected events	23763
rejected %	51%

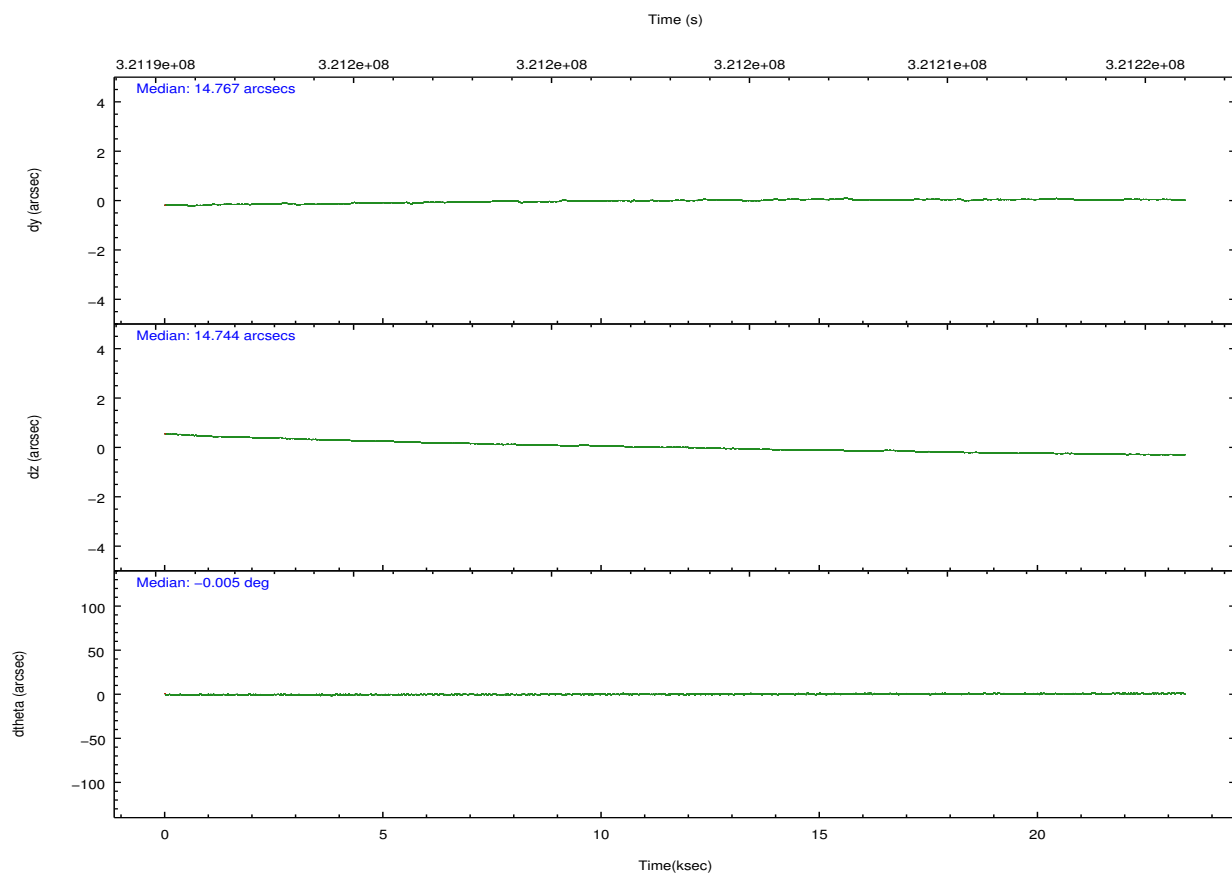
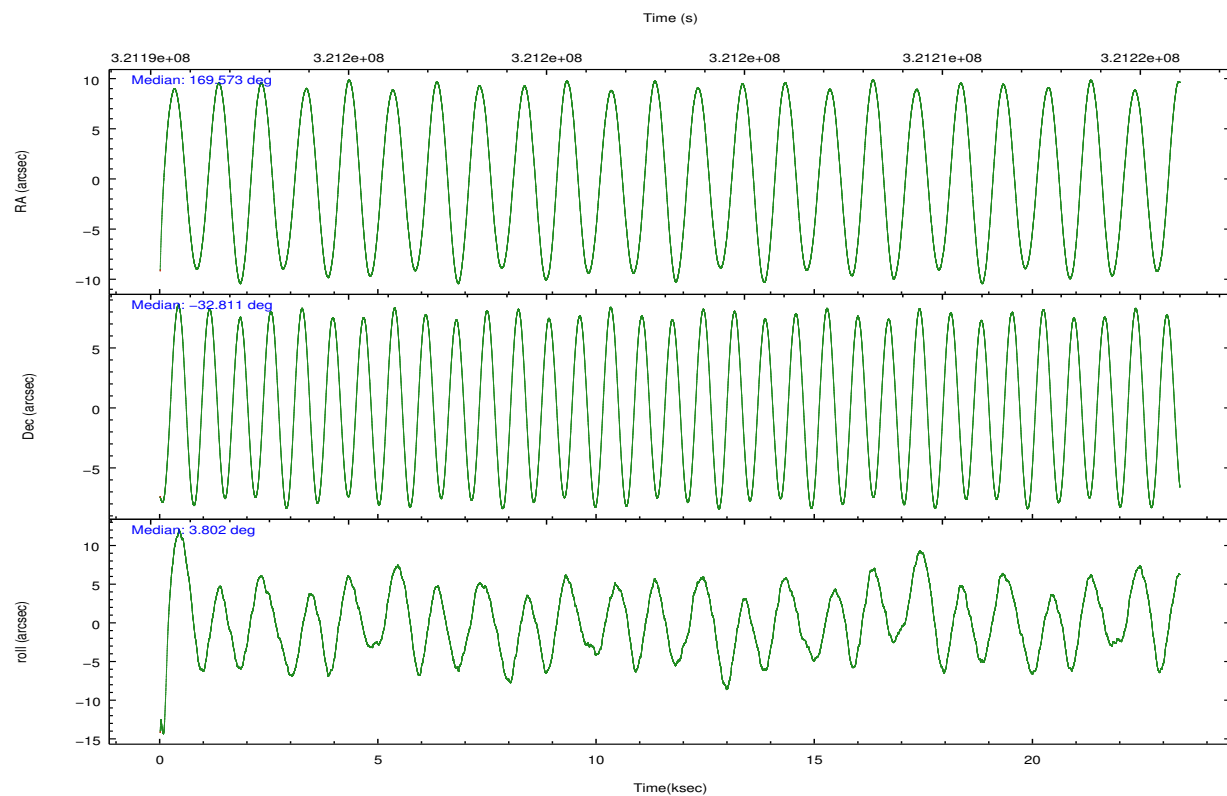
	ccd 7
grade 0 events	3045
	6%
grade 1 events	60
	0%
grade 2 events	4753
	10%
grade 3 events	2932
	6%
grade 4 events	2848
	6%
grade 5 events	4003
	8%
grade 6 events	10001
	21%
grade 7 events	18869
	40%

2.2 Compared Parameters

Parameter	Planned	Actual	Parameter	Planned	Actual
Instrument	ACIS	ACIS	Obspar format version number	7	7
Detector	ACIS-7	ACIS-7	Obspar file type	PREDICTED	ACTUAL
Grating	NONE	NONE	Obspar update status	NONE	UPDATED
Data mode	FAINT	FAINT	Number of optional ACIS chips dropped	0	0
Observation mode	POINTING	POINTING	On-chip summing requested	N	N
[deg] Pointing RA	169.546657	169.5734643028867	Subarray requested	CUSTOM	1/8
[deg] Pointing Dec	-32.826873	-32.81134935709687	Subarray start row	449	449
[deg] Pointing Roll	3.629425	3.800583378909386	Subarray row count	128	128
[mm] SIM focus pos	-0.684267	-0.6828225247311905	Alternating exposures requested	N	N
[mm] SIM defocus	0	0.001444936568705701	[s] Primary exposure time	0.000000	0.4
[mm] SIM translation stage pos	-190.132523	-190.1425803651734			
[mm] SIM translation stage offset	0	0.01005778216563158			
[s] Observation start time (MET)	321191619.184000	321190399.61482			
Observation start date	2008-03-06T11:52:34	2008-03-06T11:33:19			
[s] Observation end time (MET)	321214804.184000	321215028.82852			
Observation end date	2008-03-06T18:18:59	2008-03-06T18:23:48			
Read mode	TIMED	TIMED			

2.3 Aspect



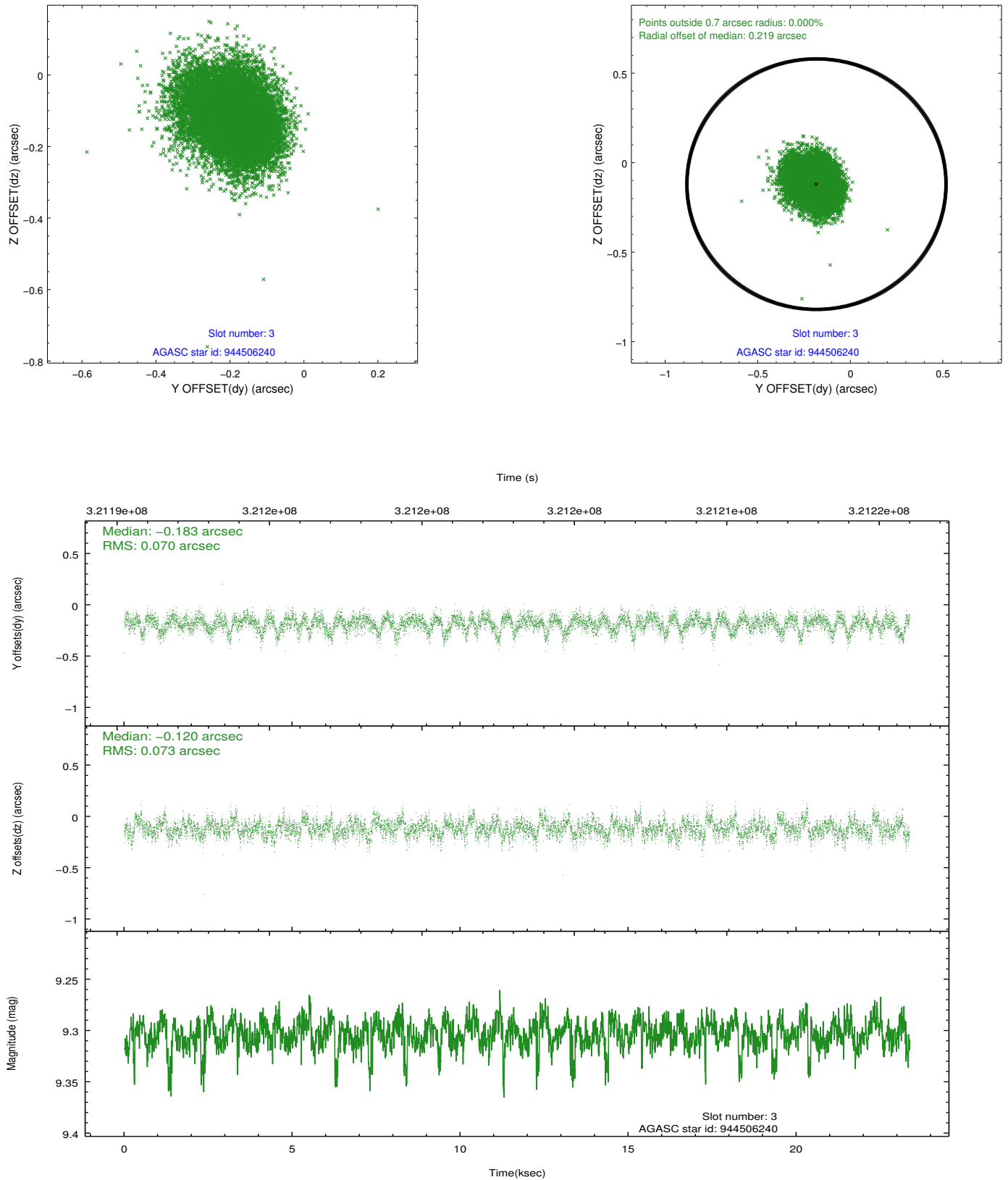


Slot Statistics

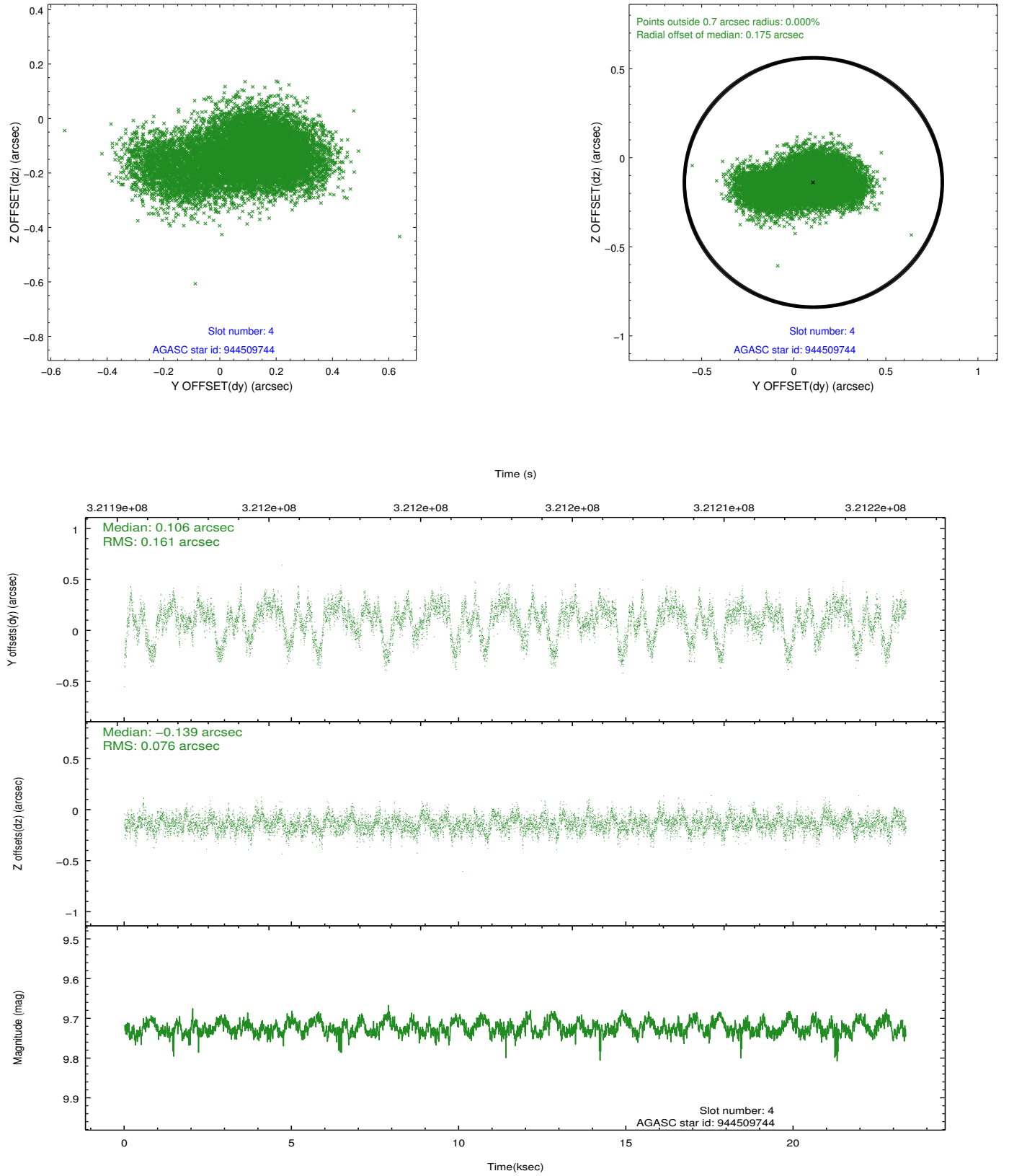
slot	status	id	mag	n_pts	med_dy	med_dz	dr1	dr2	ra	dec	mean_y	mean_z
0	FID	ACIS-S-2	7.10	5700	-0.098	-0.042	0.008	0.014	0.000000	0.000000	-767.78	-1736.14
1	FID	ACIS-S-4	7.19	5700	0.210	0.058	0.012	0.020	0.000000	0.000000	2145.71	172.33
2	FID	ACIS-S-5	7.22	5700	-0.141	-0.008	0.011	0.017	0.000000	0.000000	-1820.51	166.05
3	GUIDE	944506240	9.30	11383	-0.183	-0.120	0.107	0.175	169.445932	-32.597998	-252.80	841.40
4	GUIDE	944509744	9.72	11384	0.106	-0.139	0.179	0.339	170.145055	-32.943653	1777.43	-539.20
5	GUIDE	944516736	9.60	11391	-0.040	0.087	0.126	0.198	168.806989	-33.331700	-2335.73	-1680.66
6	GUIDE	944512232	9.21	11391	0.065	-0.045	0.090	0.145	169.072717	-32.561267	-1374.82	1041.96
7	GUIDE	944505648	10.08	11368	0.059	0.219	0.180	0.316	170.237292	-32.140130	2257.35	2327.60

2.4 Star Slots

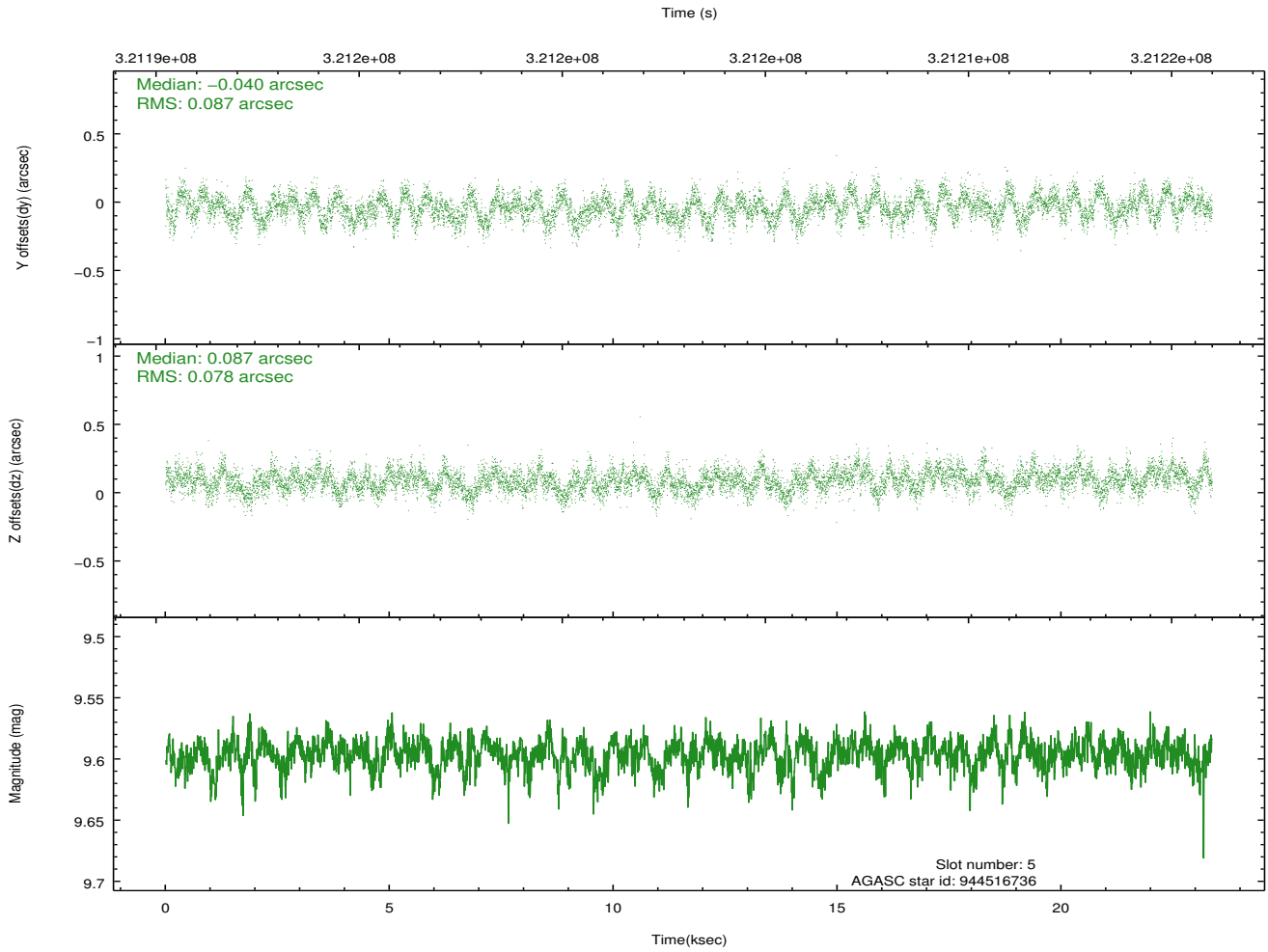
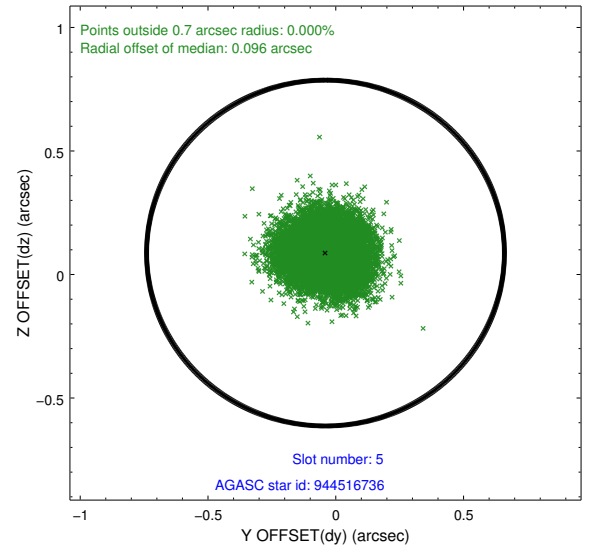
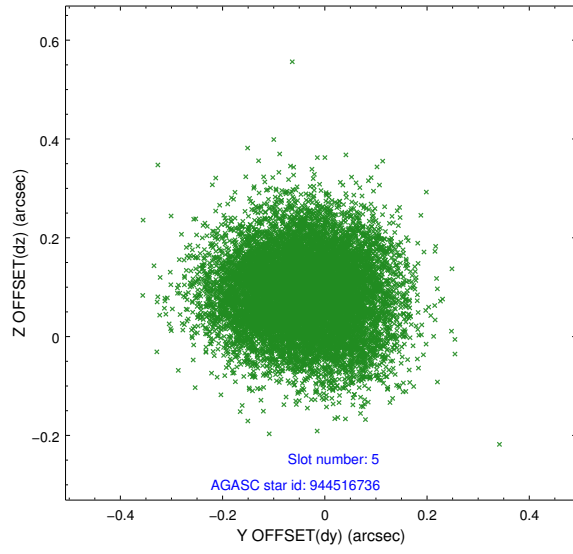
2.4.1 Slot 3



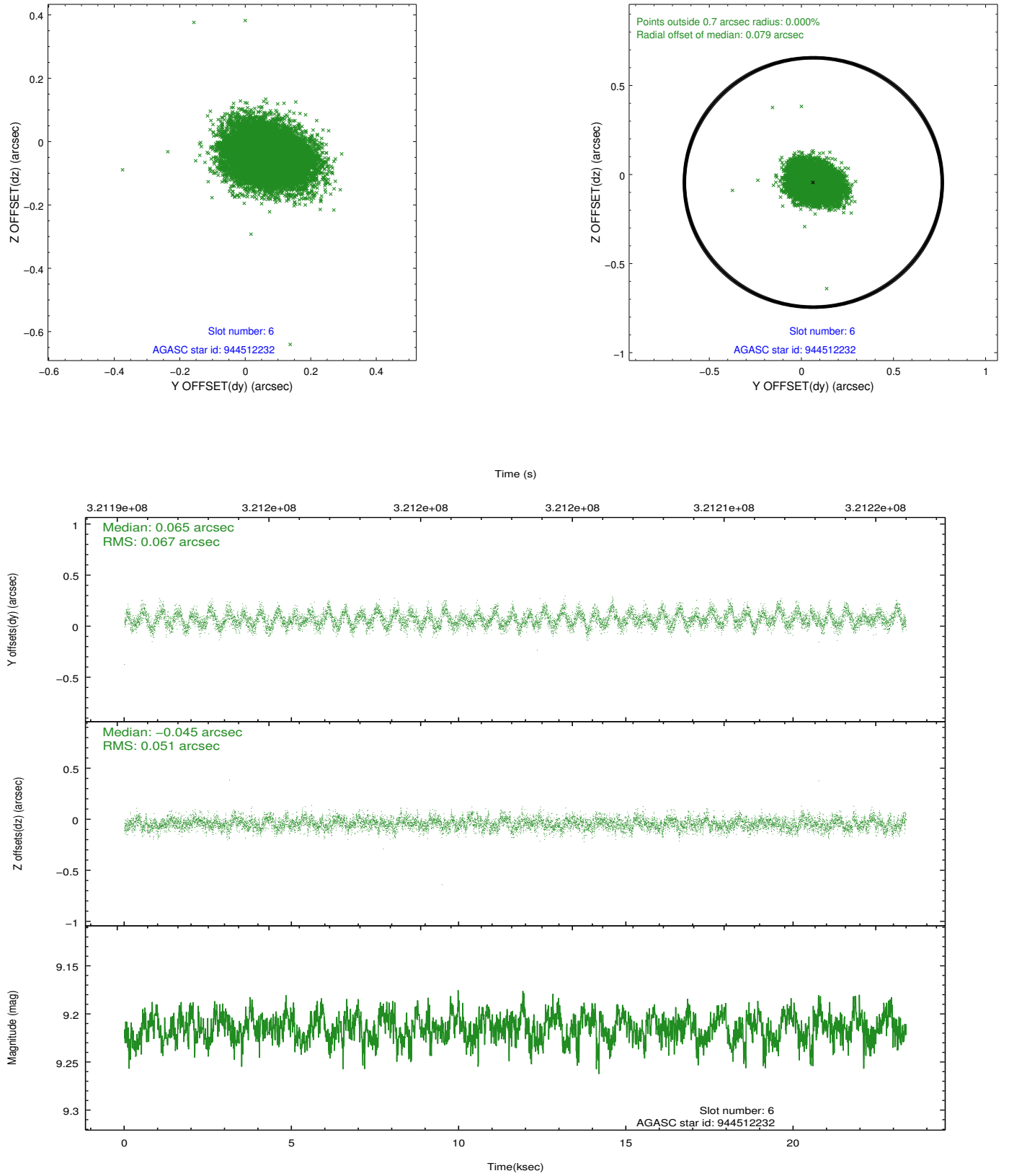
2.4.2 Slot 4



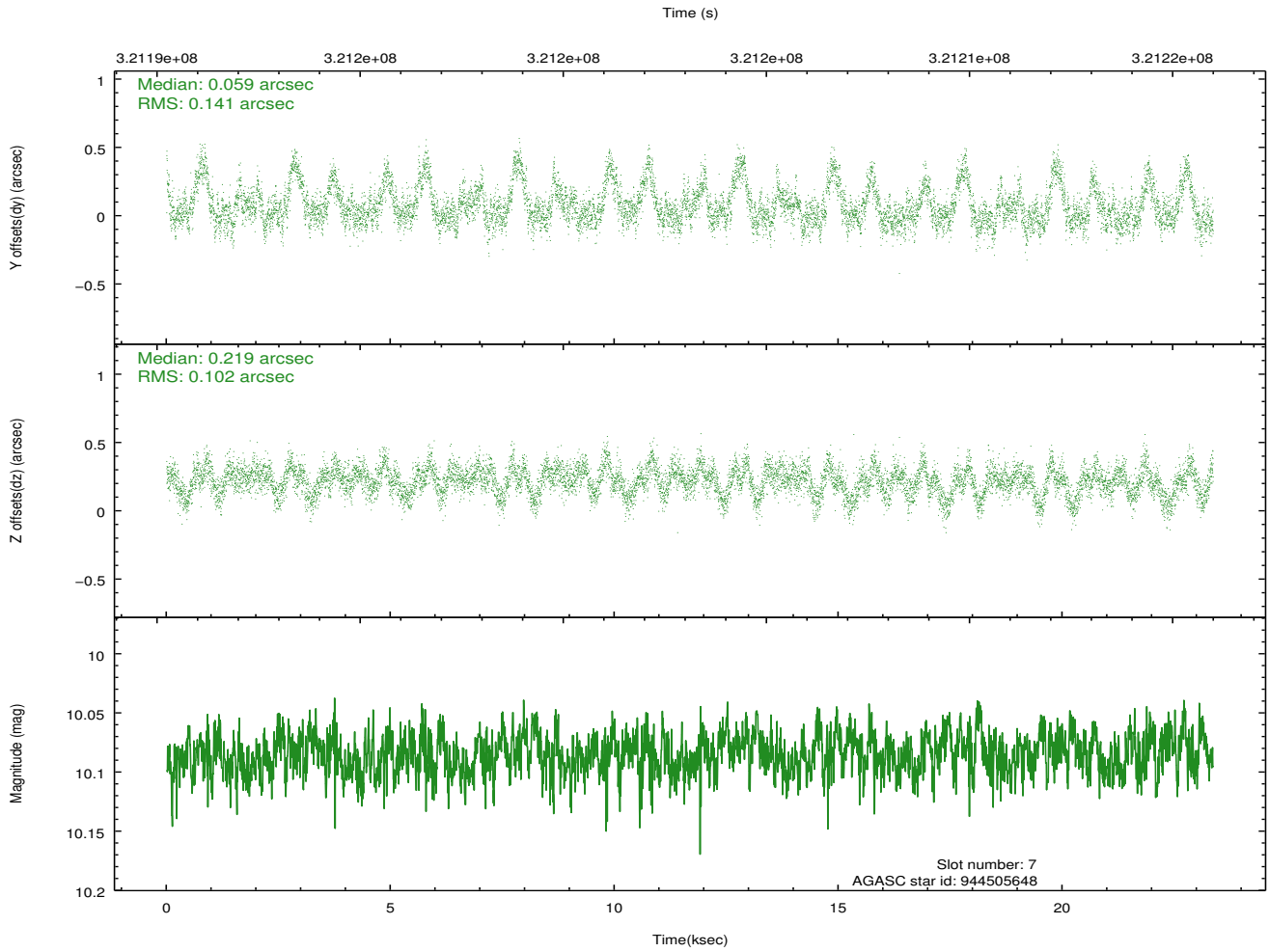
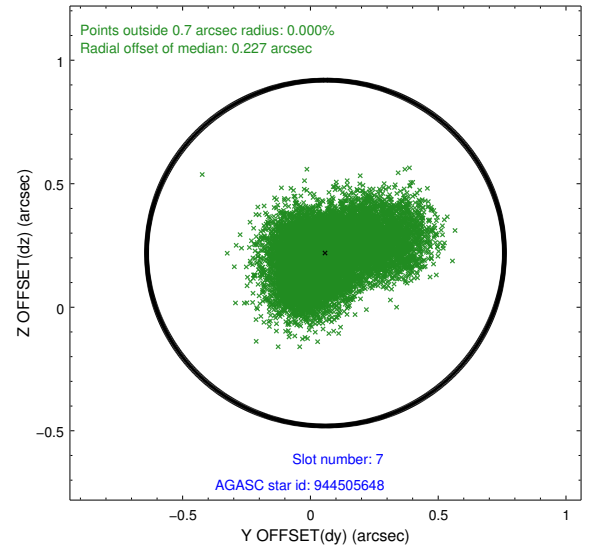
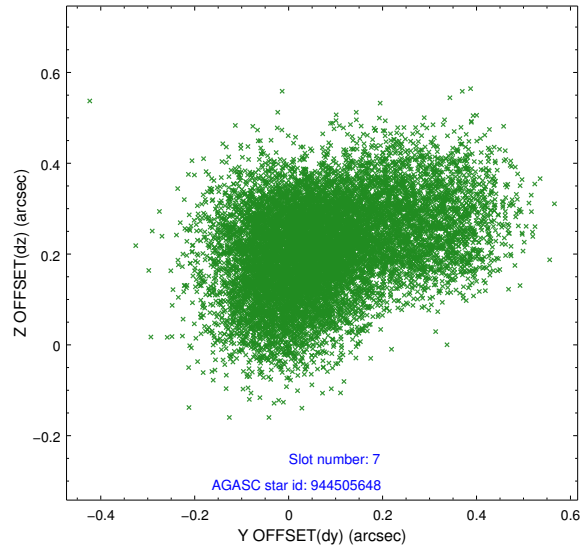
2.4.3 Slot 5



2.4.4 Slot 6

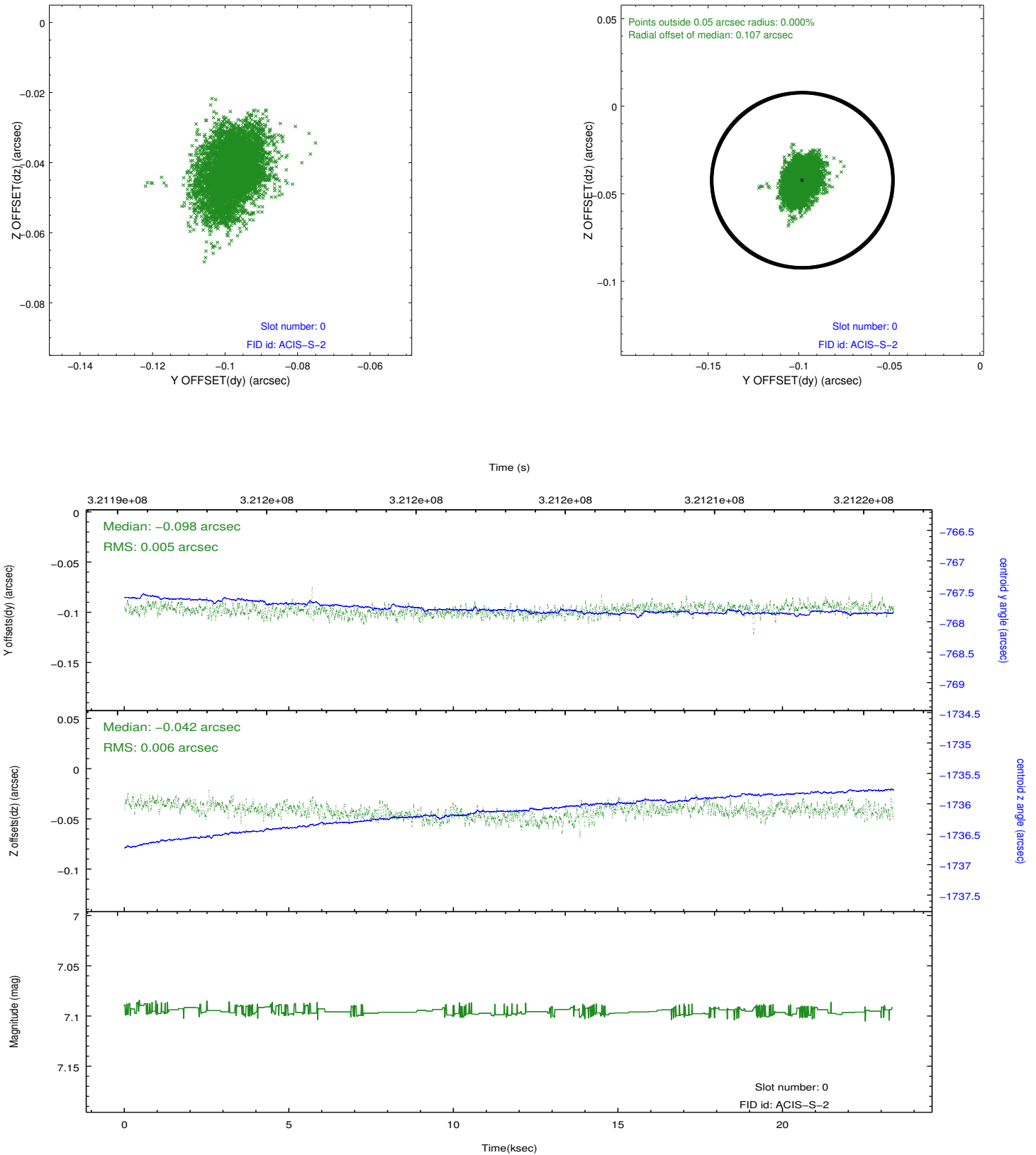


2.4.5 Slot 7

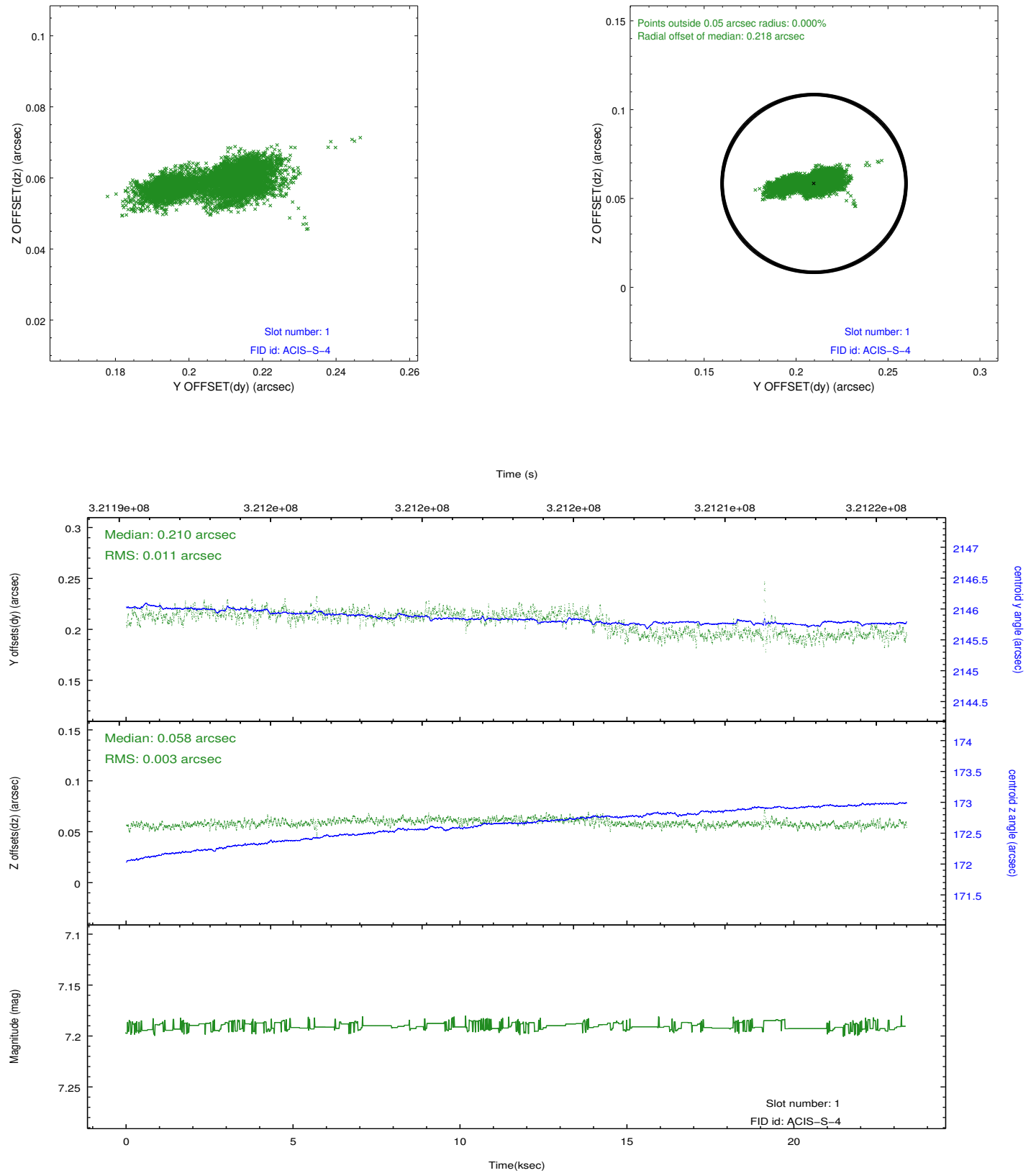


2.5 FID Slots

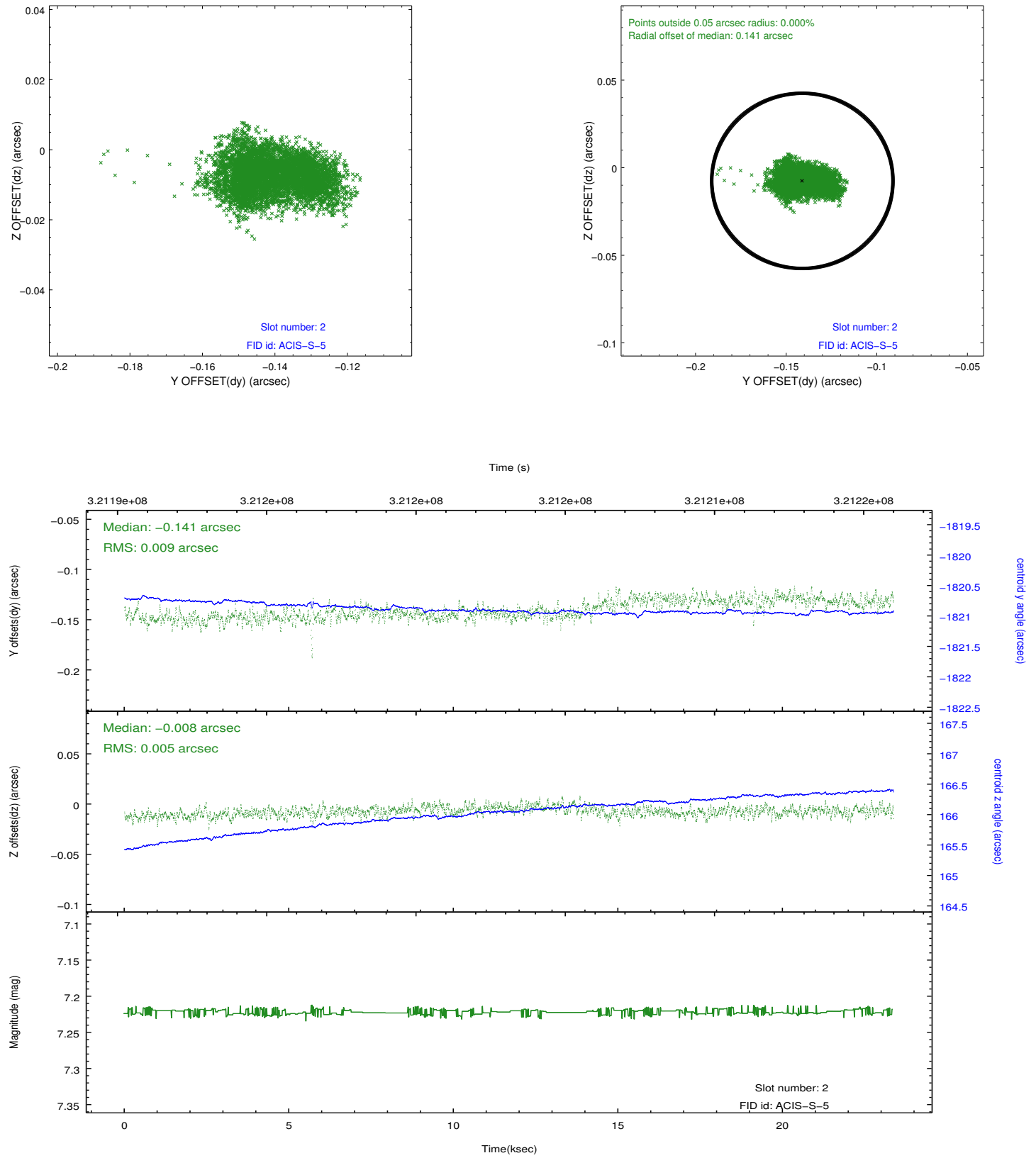
2.5.1 Slot 0



2.5.2 Slot 1



2.5.3 Slot 2



A Summary

A.1 Status

V&V Scientist	Beth Sundheim
V&V Date (YYYY-MM-DD)	2012.05.14
V&V Edition	1
V&V Disposition and Status	OK
V&V Charge Time	23.3671986

A.2 Comments