

# V&V Reference Report

## L2 ASCDS Version : 8.4.4

Observation 9257 - L2 Version 2  
Chandra X-Ray Center

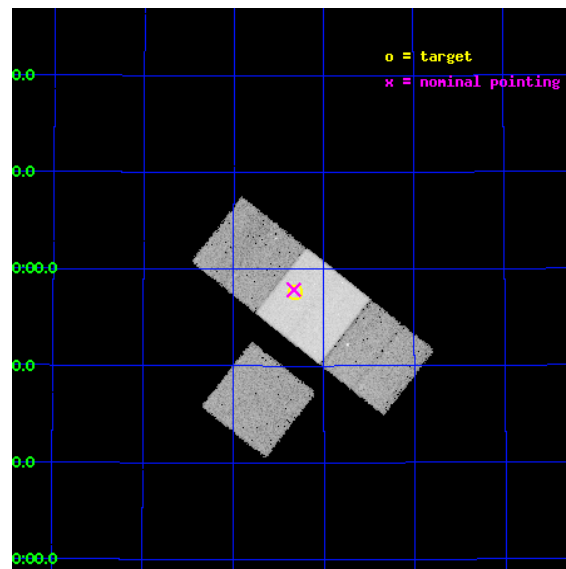
L2 Processing Date : May 8 2012

## Contents

<b>1</b>	<b>Front</b>	<b>2</b>
<b>2</b>	<b>OBI</b>	<b>3</b>
2.1	OBI . . . . .	3
2.1.1	Images . . . . .	3
2.1.2	Bias . . . . .	3
2.1.3	Parameters . . . . .	4
2.1.4	Events . . . . .	4
2.2	Compared Parameters . . . . .	5
2.3	Aspect . . . . .	6
2.4	Star Slots . . . . .	9
2.4.1	Slot 3 . . . . .	9
2.4.2	Slot 4 . . . . .	10
2.4.3	Slot 5 . . . . .	11
2.4.4	Slot 6 . . . . .	12
2.4.5	Slot 7 . . . . .	13
2.5	FID Slots . . . . .	14
2.5.1	Slot 0 . . . . .	14
2.5.2	Slot 1 . . . . .	15
2.5.3	Slot 2 . . . . .	16
<b>A</b>	<b>Summary</b>	<b>17</b>
A.1	Status . . . . .	17
A.2	Comments . . . . .	17

# 1 Front

seq_num	701698	Sequence number
obs_id	9257	Observation id
title	Orientation effects in the X-ray and multi-wavelength properties of high-z, 3CRR quasars.	Proposal title
observer	Dr. Belinda Wilkes	Principal investigator
object	3CRR 356	Source name
dtcycle	0	&#160
cycle	P	events from which exps? Prim/Second/Both
ra_targ	261.080417	Observer's specified target RA [deg]
dec_targ	50.960028	Observer's specified target Dec [deg]
ra_nom	261.08305262872	Nominal RA [deg]
dec_nom	50.964605012945	Nominal Dec [deg]
roll_nom	38.267670036651	Nominal Roll [deg]
revision	2	Processing version of data
ontime	20134.500154853	Sum of GTIs [s]
livetime	19871.428087526	Livetime [s]
ontime3	20134.500154853	Sum of GTIs [s]
ontime6	20134.500154853	Sum of GTIs [s]
ontime7	20134.500154853	Sum of GTIs [s]
ontime8	20131.359194577	Sum of GTIs [s]
l2events	172440	Number of level 2 events

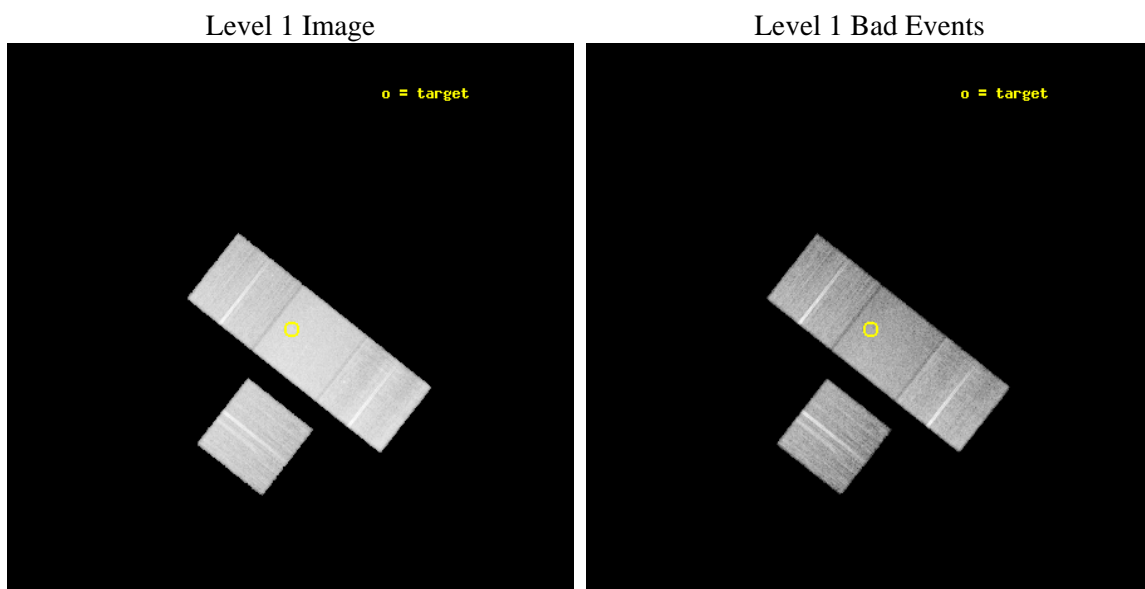




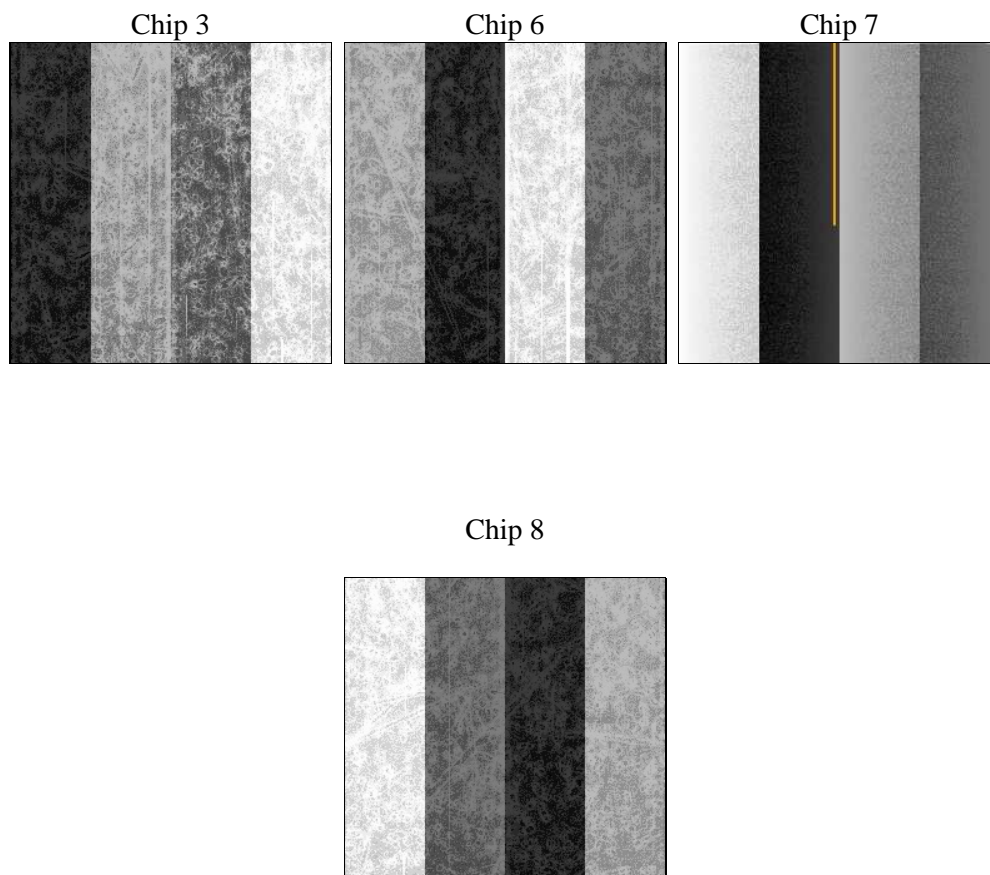
## 2 OBI

### 2.1 OBI

#### 2.1.1 Images



#### 2.1.2 Bias



### 2.1.3 Parameters

obi_num	1	Obi number	sched_exp_time	20000.000000	[s] Scheduled observation exposure time
ascdsver	8.4.4	Processing system revision	ontime	20134.500154853	Sum of GTIs [s]
caldsver	4.4.9	&#160	ontime3	20134.500154853	Sum of GTIs [s]
date	2012-05-08T03:45:45	Date and time of file creation	ontime6	20134.500154853	Sum of GTIs [s]
revision	2	Processing version of data	ontime7	20134.500154853	Sum of GTIs [s]
			ontime8	20131.359194577	Sum of GTIs [s]
			l1events	912672	Number of level 1 events

### 2.1.4 Events

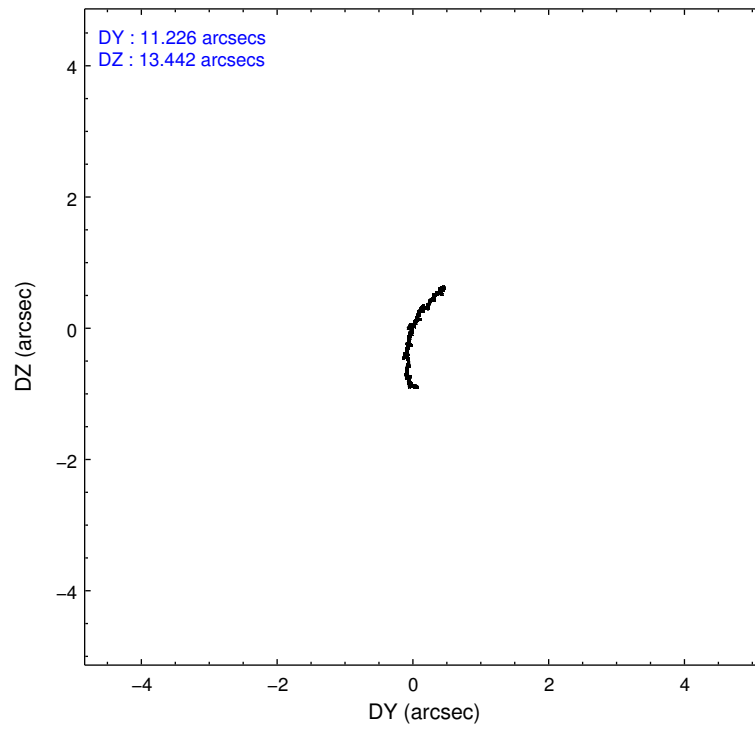
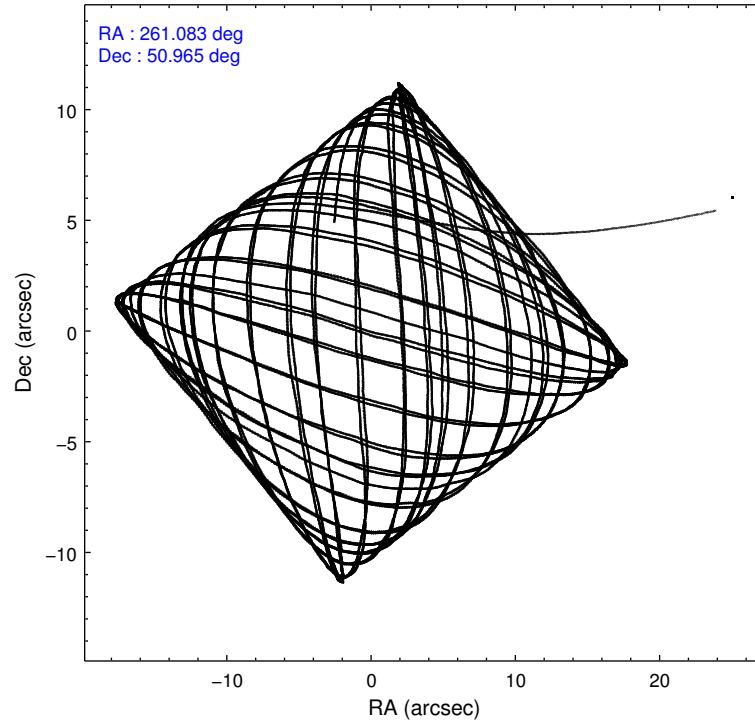
	ccd 3	ccd 6	ccd 7	ccd 8
level 1 events	194133	195752	271227	251560
rejected events	171496	172698	160881	195619
rejected %	88%	88%	59%	77%

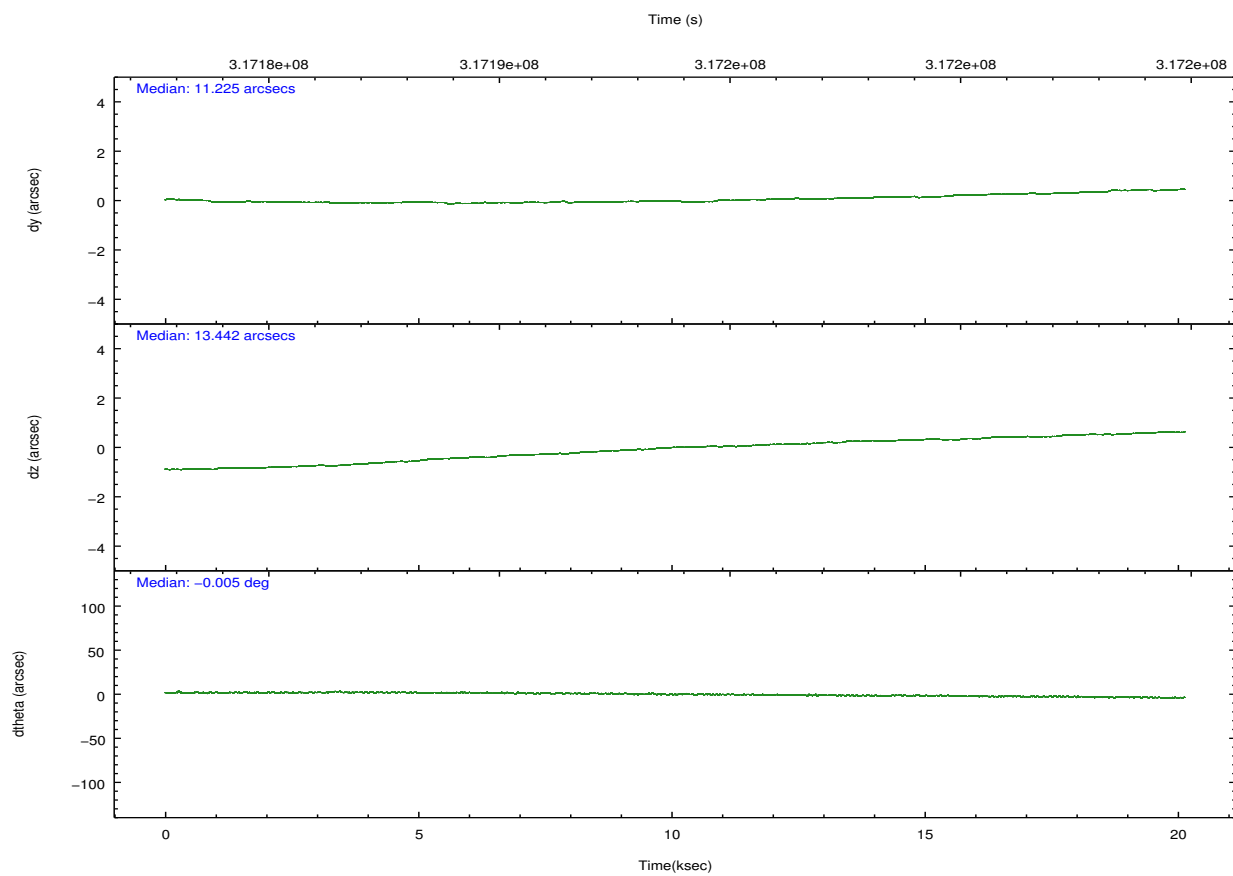
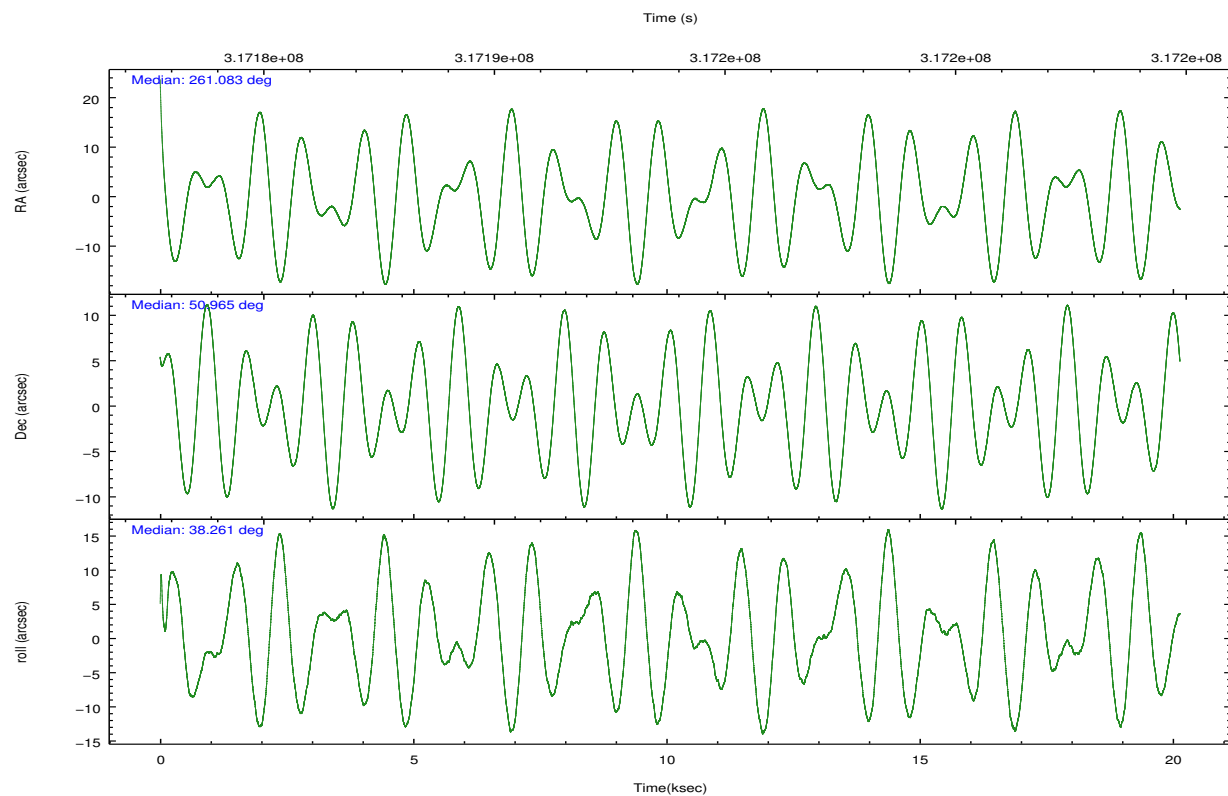
	ccd 3	ccd 6	ccd 7	ccd 8
grade 0 events	10069	9014	9680	17972
	5%	4%	3%	7%
grade 1 events	128	112	275	177
	0%	0%	0%	0%
grade 2 events	4632	5224	22783	13129
	2%	2%	8%	5%
grade 3 events	2157	2292	9575	6005
	1%	1%	3%	2%
grade 4 events	2183	2159	9708	5525
	1%	1%	3%	2%
grade 5 events	9141	9479	25277	12450
	4%	4%	9%	4%
grade 6 events	4130	4876	61086	14464
	2%	2%	22%	5%
grade 7 events	161693	162596	132843	181838
	83%	83%	48%	72%

## 2.2 Compared Parameters

Parameter	Planned	Actual	Parameter	Planned	Actual
Instrument	ACIS	ACIS	Obspar format version number	7	7
Detector	ACIS-3678	ACIS-3678	Obspar file type	PREDICTED	ACTUAL
Grating	NONE	NONE	Obspar update status	NONE	UPDATED
Data mode	FAINT	FAINT	CCD I0 on	N	N
Observation mode	POINTING	POINTING	CCD I1 on	N	N
[deg] Pointing RA	261.067553	261.0830526287207	CCD I2 on	N	N
[deg] Pointing Dec	50.939047	50.96460501294536	CCD I3 on	O1	Y
[deg] Pointing Roll	38.123068	38.26767003665135	CCD S0 on	N	N
[mm] SIM focus pos	-0.684267	-0.6828225247311905	CCD S1 on	N	N
[mm] SIM defocus	0	0.001444936568705701	CCD S2 on	O3	Y
[mm] SIM translation stage pos	-190.132523	-190.1400660498719	CCD S3 on	Y	Y
[mm] SIM translation stage offset	0	0.00754346686406393	CCD S4 on	O2	Y
[s] Observation start time (MET)	317183874.184000	317182732.4453	CCD S5 on	N	N
Observation start date	2008-01-20T02:36:49	2008-01-20T02:18:52	Number of optional ACIS chips dropped	0	0
[s] Observation end time (MET)	317203874.184000	317204713.05887	On-chip summing requested	N	N
Observation end date	2008-01-20T08:10:09	2008-01-20T08:25:13	Subarray requested	NONE	NONE
Read mode	TIMED	TIMED	Alternating exposures requested	N	N
			[s] Primary exposure time	0.000000	3.1

## 2.3 Aspect



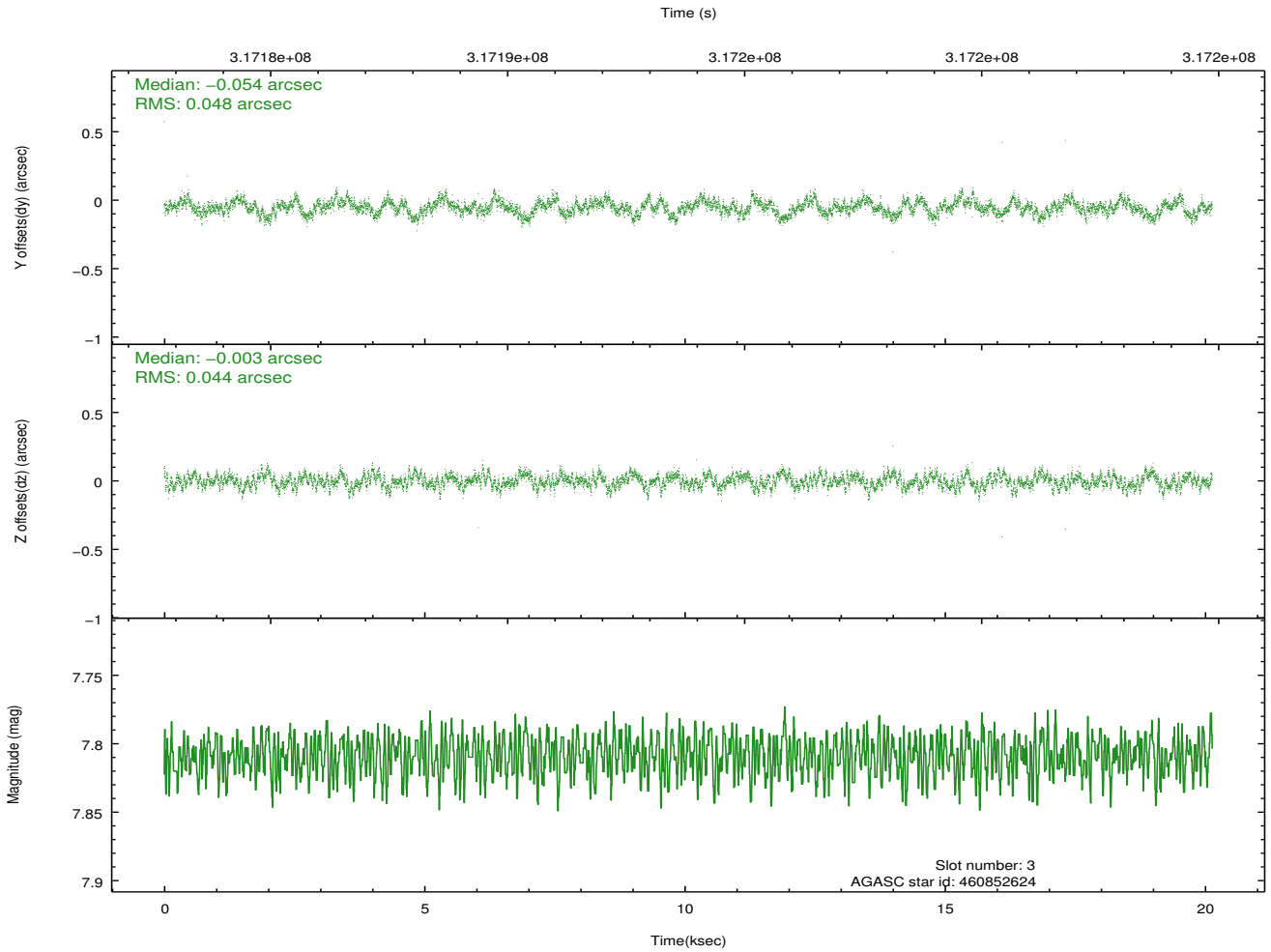
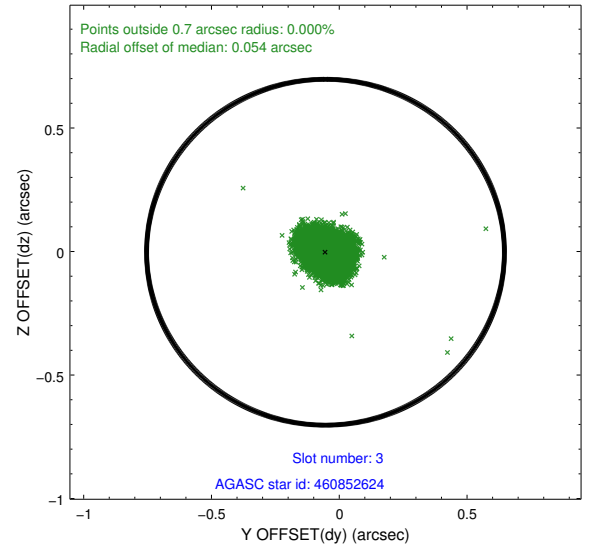
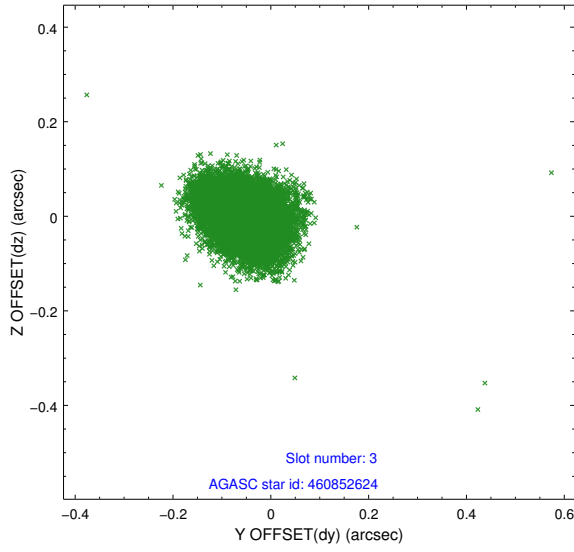


### Slot Statistics

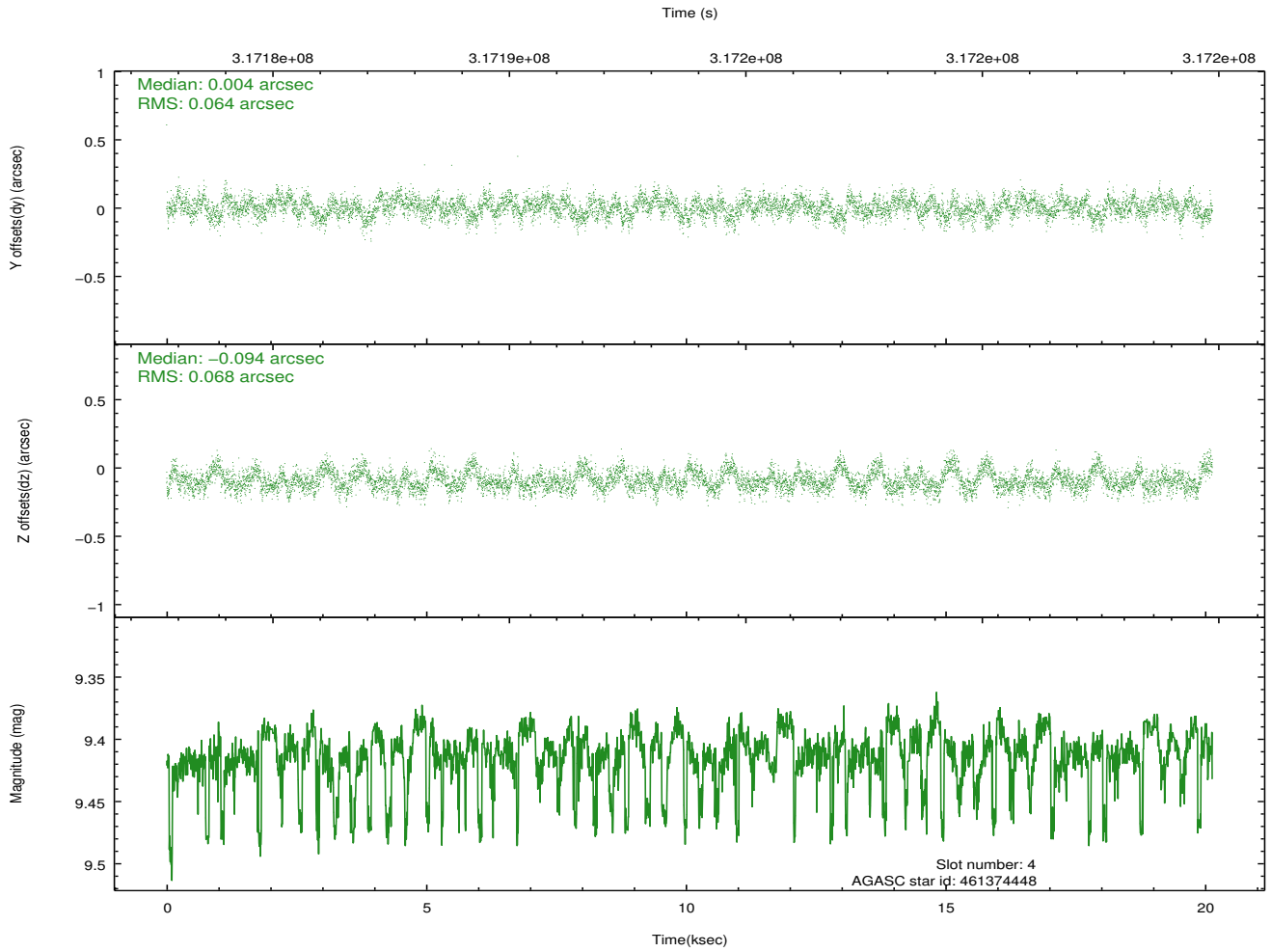
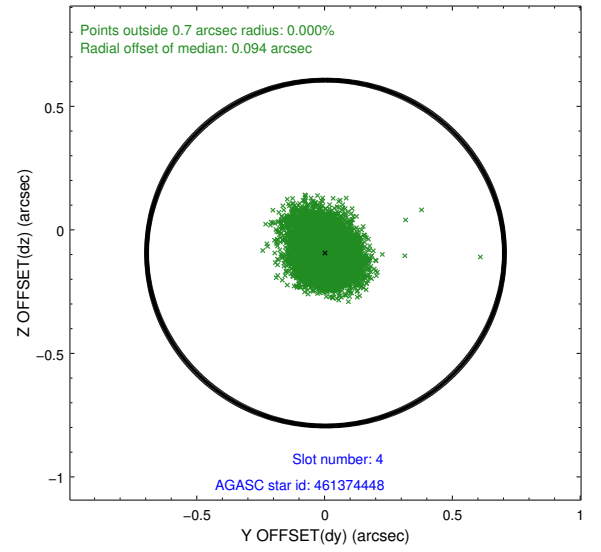
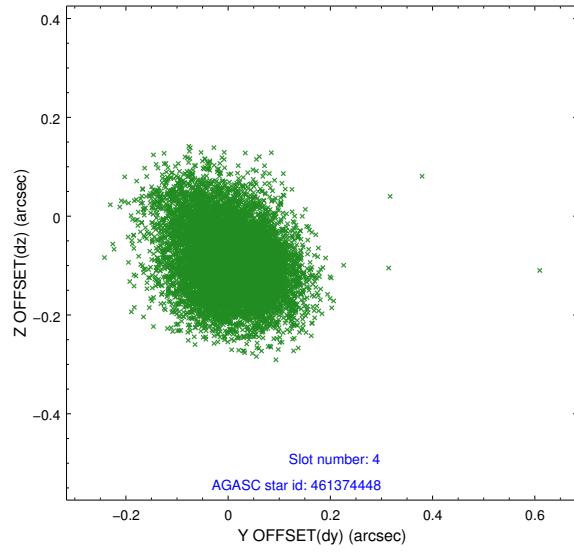
slot	status	id	mag	n_pts	med_dy	med_dz	dr1	dr2	ra	dec	mean_y	mean_z
0	FID	ACIS-S-1	7.19	4911	0.073	-0.030	0.015	0.041	0.000000	0.000000	931.93	-1730.36
1	FID	ACIS-S-5	7.23	4912	-0.112	0.057	0.007	0.012	0.000000	0.000000	-1817.12	167.14
2	FID	ACIS-S-6	7.33	4911	0.017	-0.013	0.012	0.035	0.000000	0.000000	397.26	811.21
3	GUIDE	460852624	7.81	9823	-0.054	-0.003	0.069	0.111	261.108560	50.425134	-1068.23	-1513.83
4	GUIDE	461374448	9.41	9751	0.004	-0.094	0.098	0.163	260.599692	50.866435	-995.44	452.83
5	GUIDE	461378056	8.97	9814	0.153	-0.024	0.076	0.120	260.306024	50.849106	-1555.84	820.81
6	GUIDE	461385840	7.63	9825	0.022	-0.009	0.073	0.110	261.154891	50.685749	-406.97	-840.39
7	GUIDE	461507992	9.34	9809	-0.118	0.122	0.105	0.177	261.907780	50.971769	1577.94	-1074.37

## 2.4 Star Slots

### 2.4.1 Slot 3

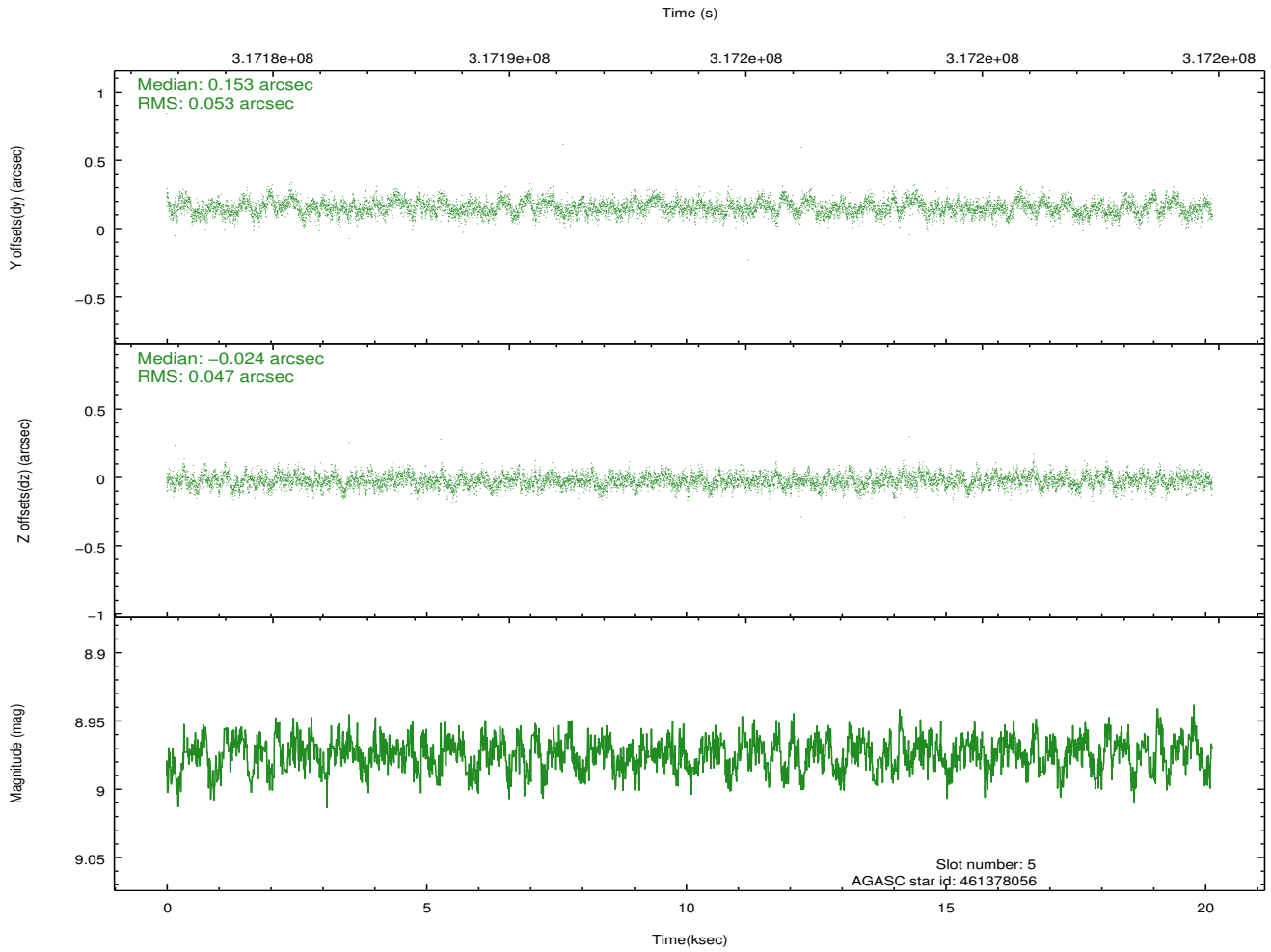
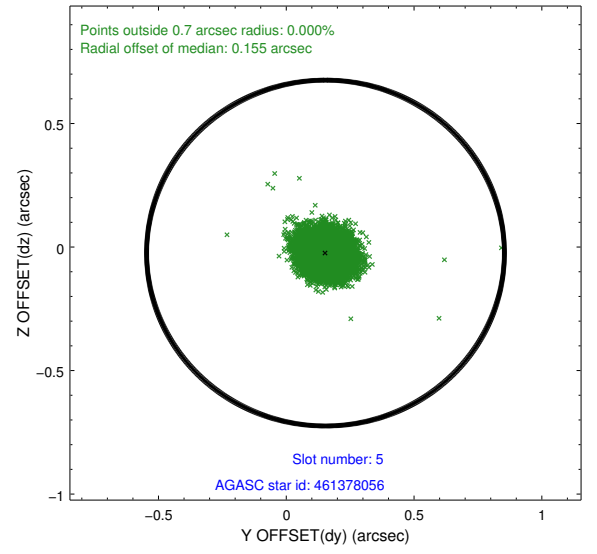
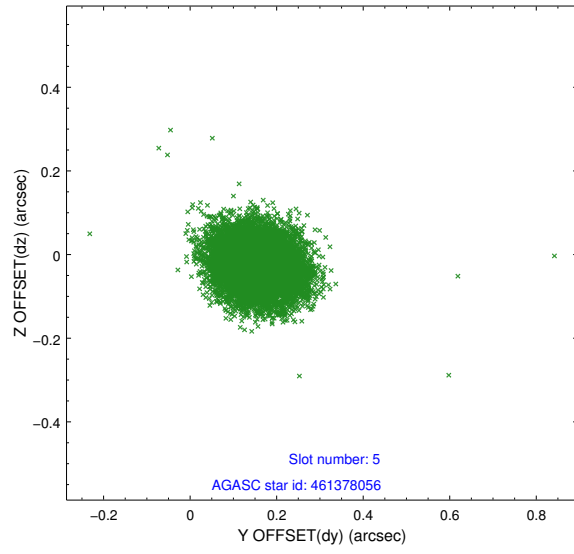


## 2.4.2 Slot 4

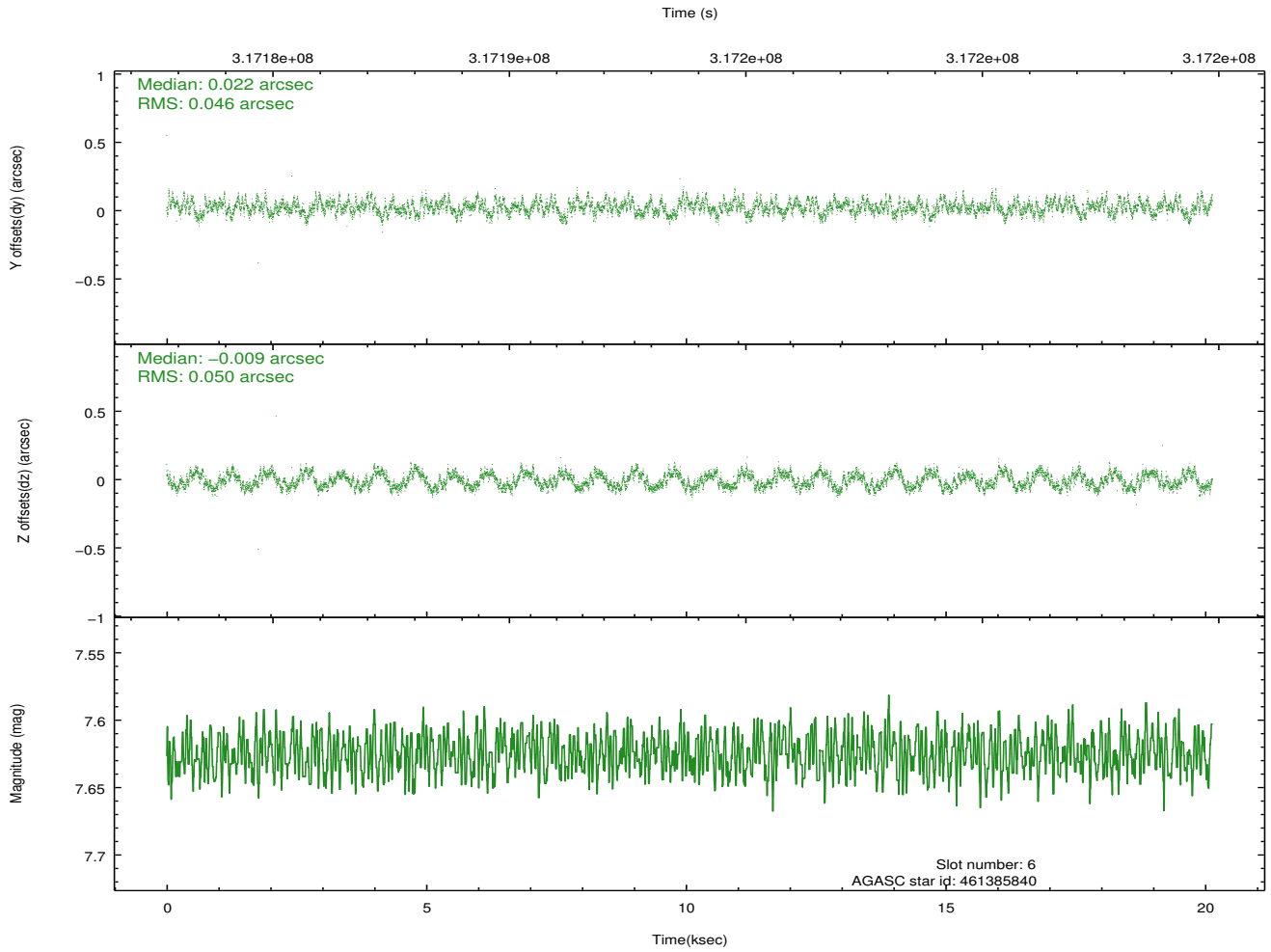
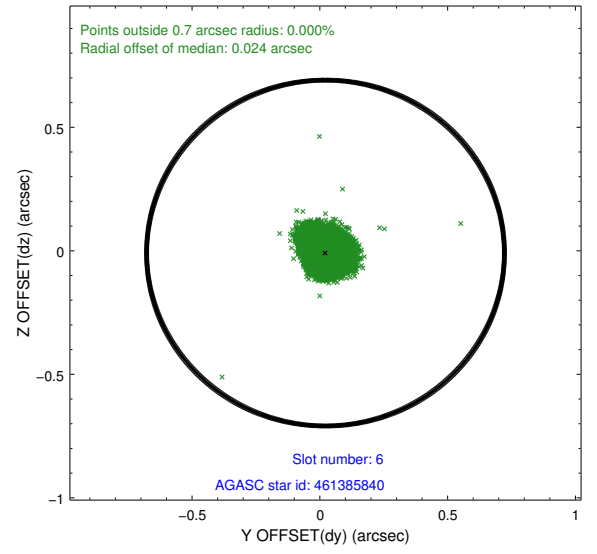
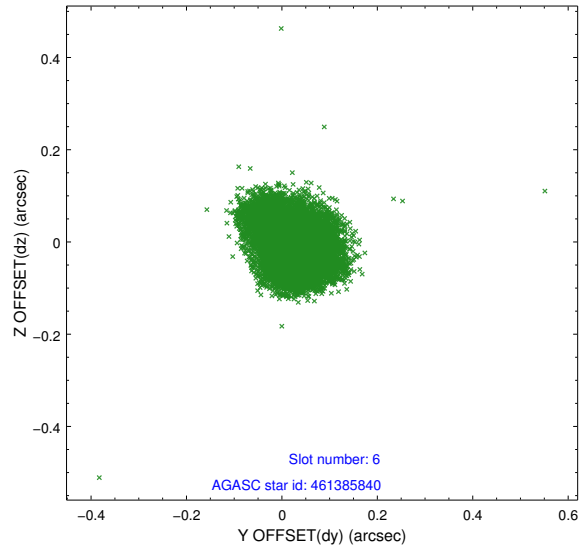




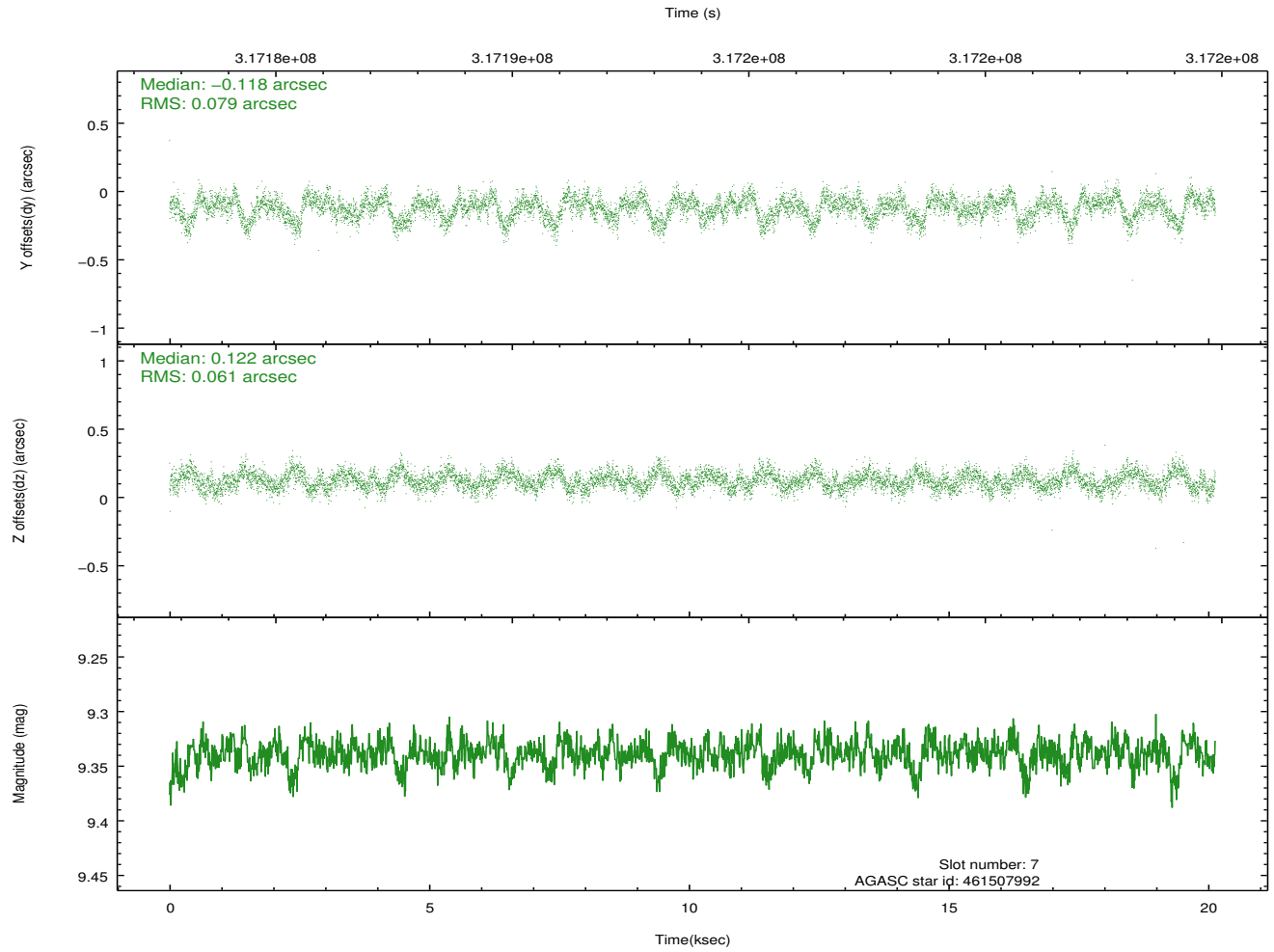
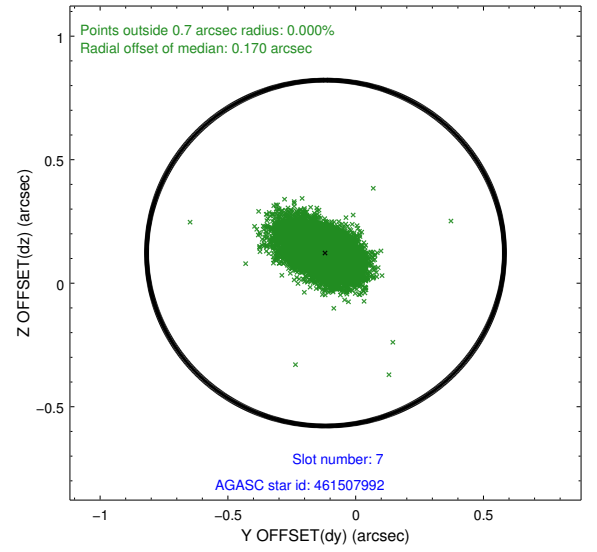
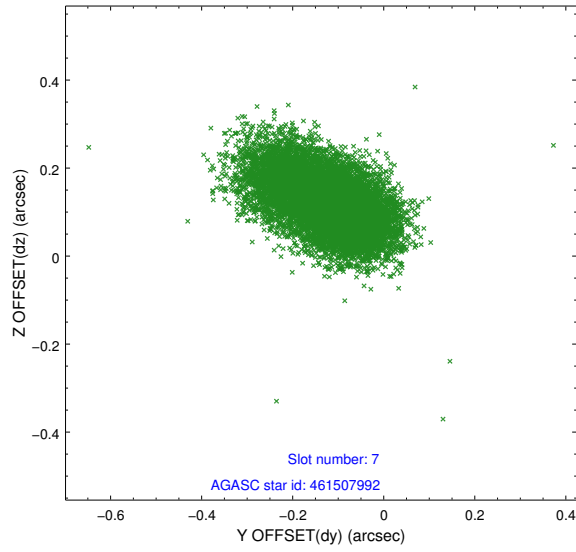
### 2.4.3 Slot 5



## 2.4.4 Slot 6

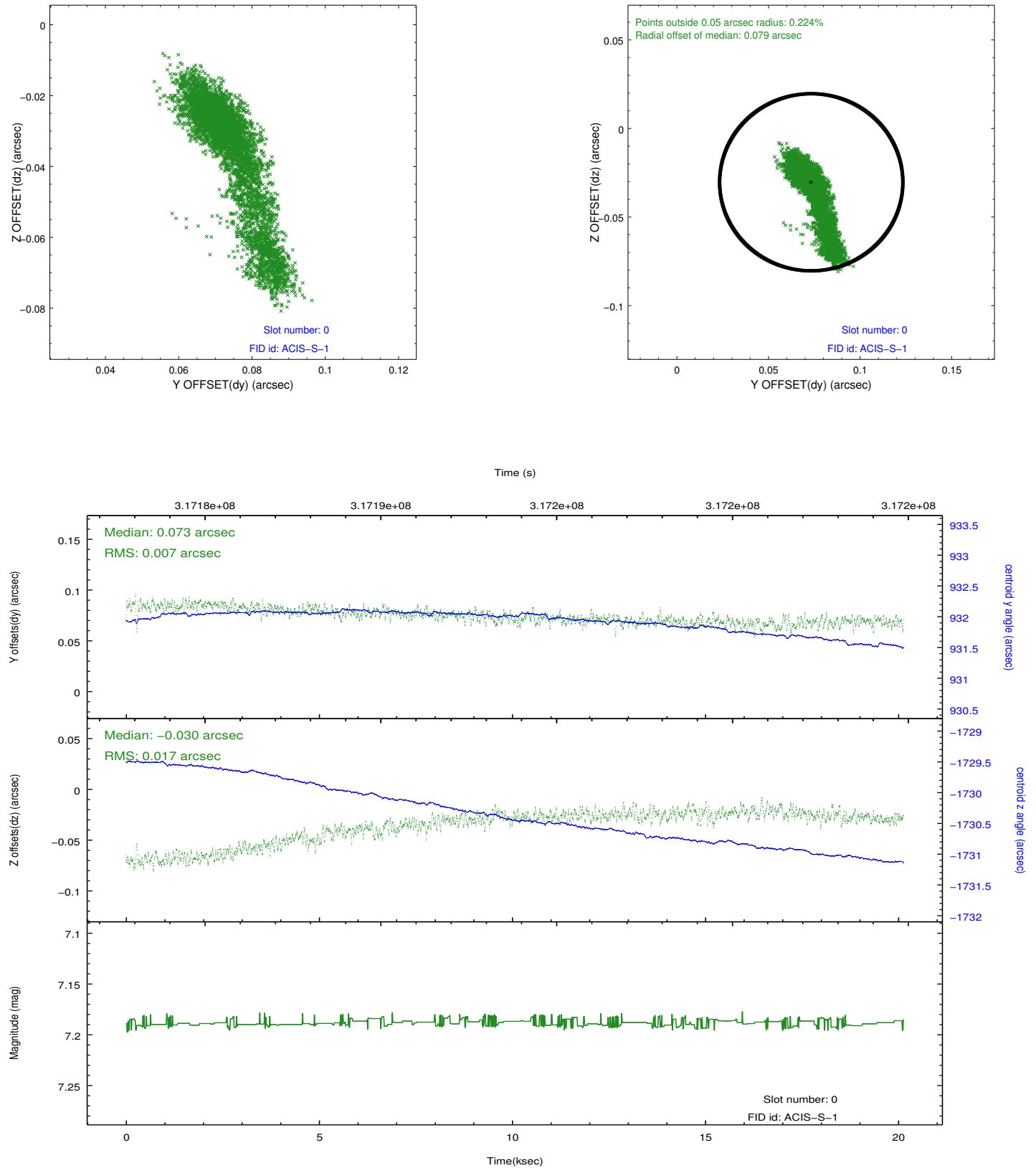


## 2.4.5 Slot 7

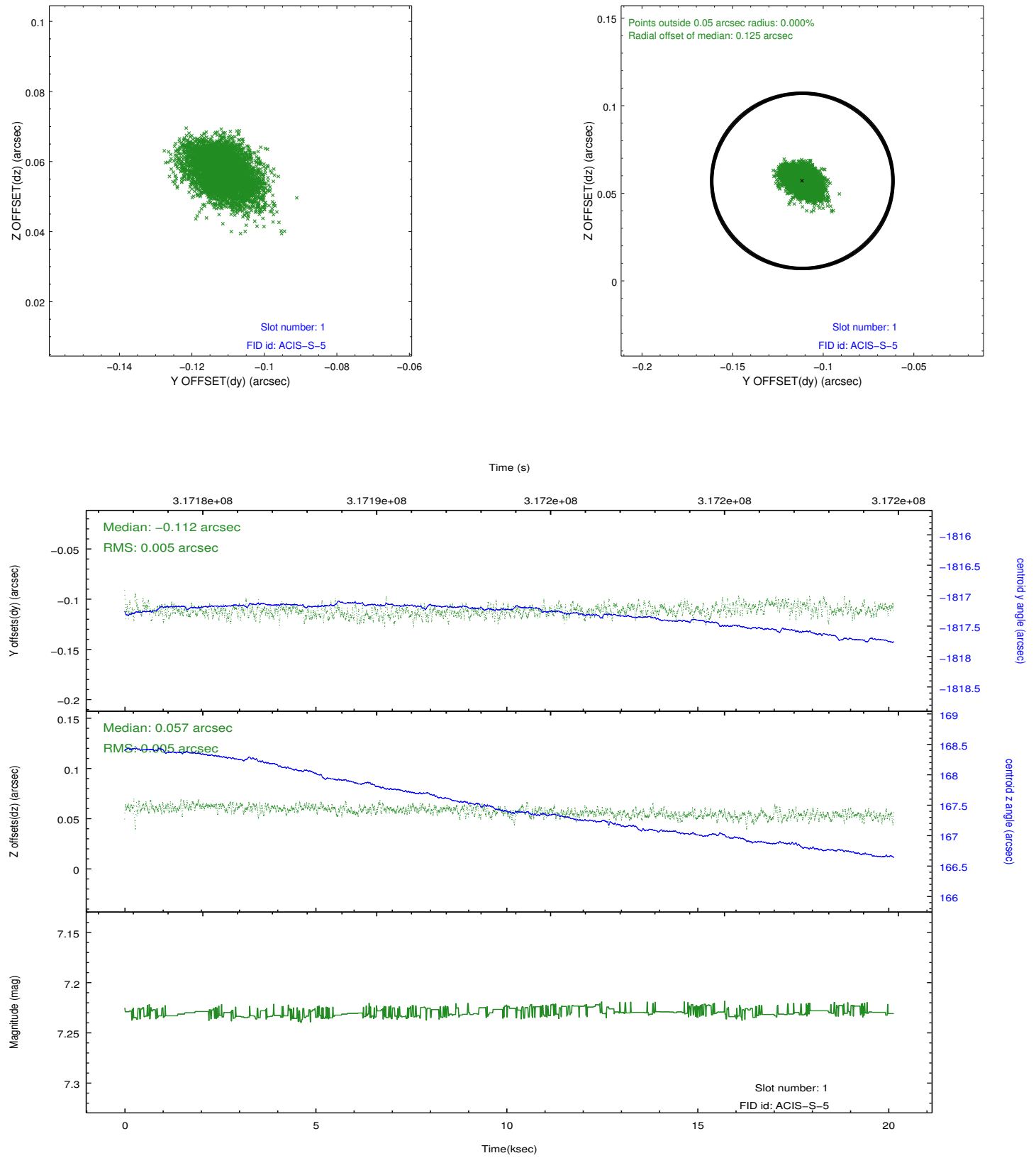


## 2.5 FID Slots

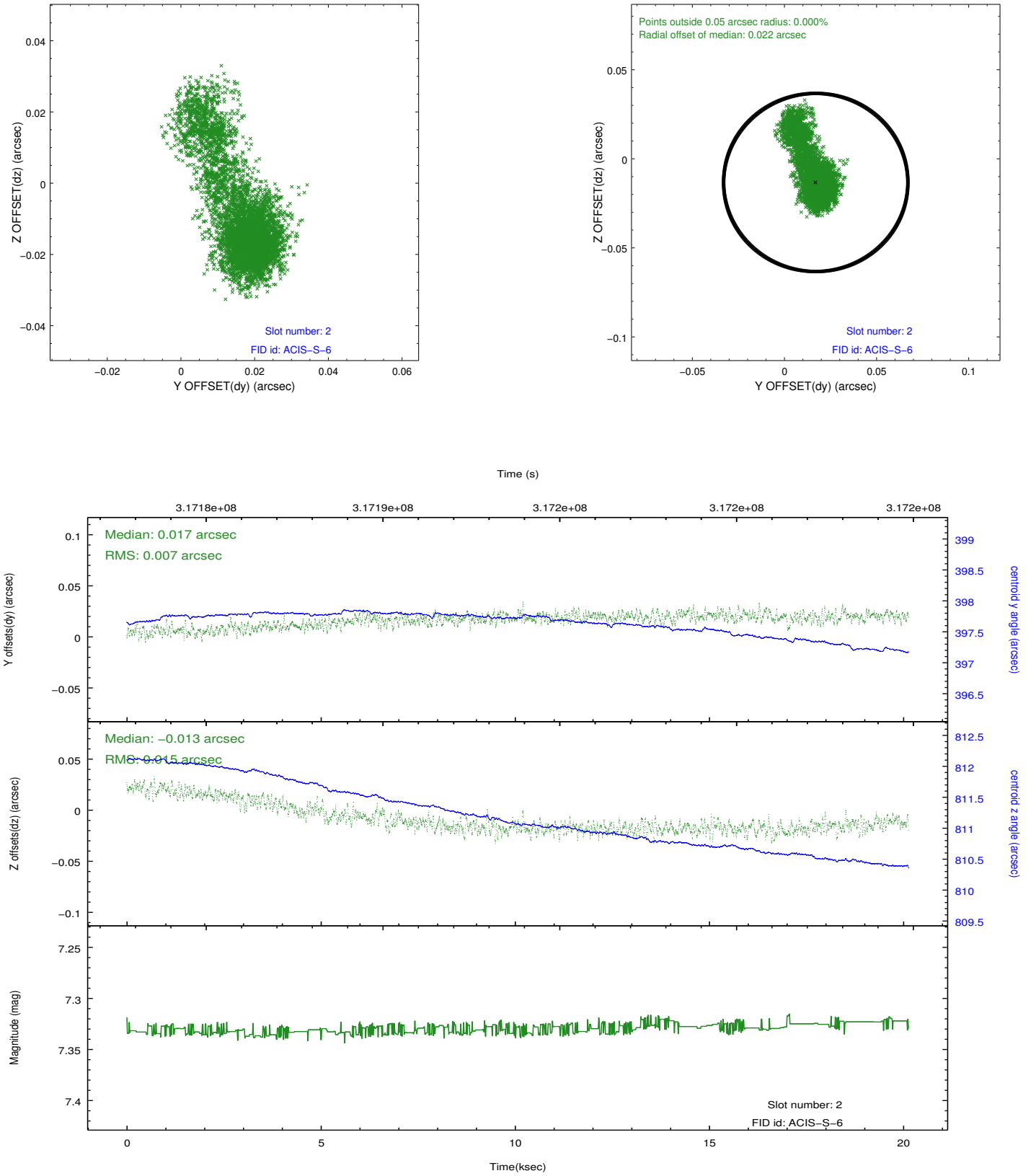
### 2.5.1 Slot 0



## 2.5.2 Slot 1



### 2.5.3 Slot 2



## A Summary

### A.1 Status

V&V Scientist	Jen Lauer
V&V Date (YYYY-MM-DD)	2012.05.10
V&V Edition	1
V&V Disposition and Status	OK
V&V Charge Time	20.1345001

### A.2 Comments