

# V&V Reference Report

## L2 ASCDS Version : 8.4.4

Observation 9222 - L2 Version 2  
Chandra X-Ray Center

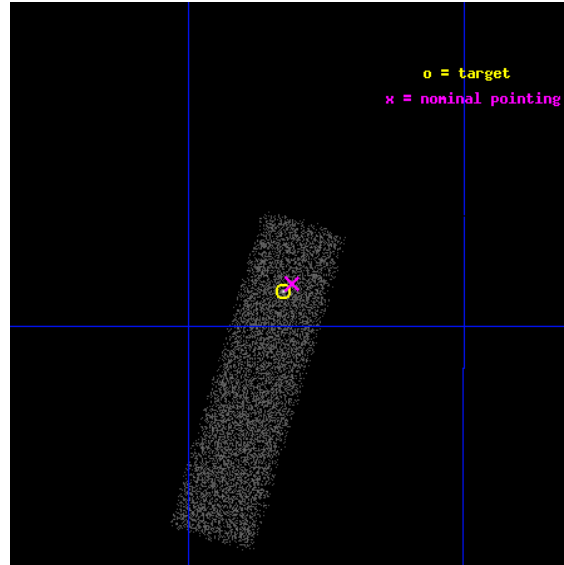
L2 Processing Date : May 16 2012

## Contents

<b>1</b>	<b>Front</b>	<b>2</b>
<b>2</b>	<b>OBI</b>	<b>3</b>
2.1	OBI . . . . .	3
2.1.1	Images . . . . .	3
2.1.2	Bias . . . . .	3
2.1.3	Parameters . . . . .	4
2.1.4	Events . . . . .	4
2.2	Compared Parameters . . . . .	5
2.3	Aspect . . . . .	6
2.4	Star Slots . . . . .	9
2.4.1	Slot 3 . . . . .	9
2.4.2	Slot 4 . . . . .	10
2.4.3	Slot 5 . . . . .	11
2.4.4	Slot 6 . . . . .	12
2.4.5	Slot 7 . . . . .	13
2.5	FID Slots . . . . .	14
2.5.1	Slot 0 . . . . .	14
2.5.2	Slot 1 . . . . .	15
2.5.3	Slot 2 . . . . .	16
<b>A</b>	<b>Summary</b>	<b>17</b>
A.1	Status . . . . .	17
A.2	Comments . . . . .	17

# 1 Front

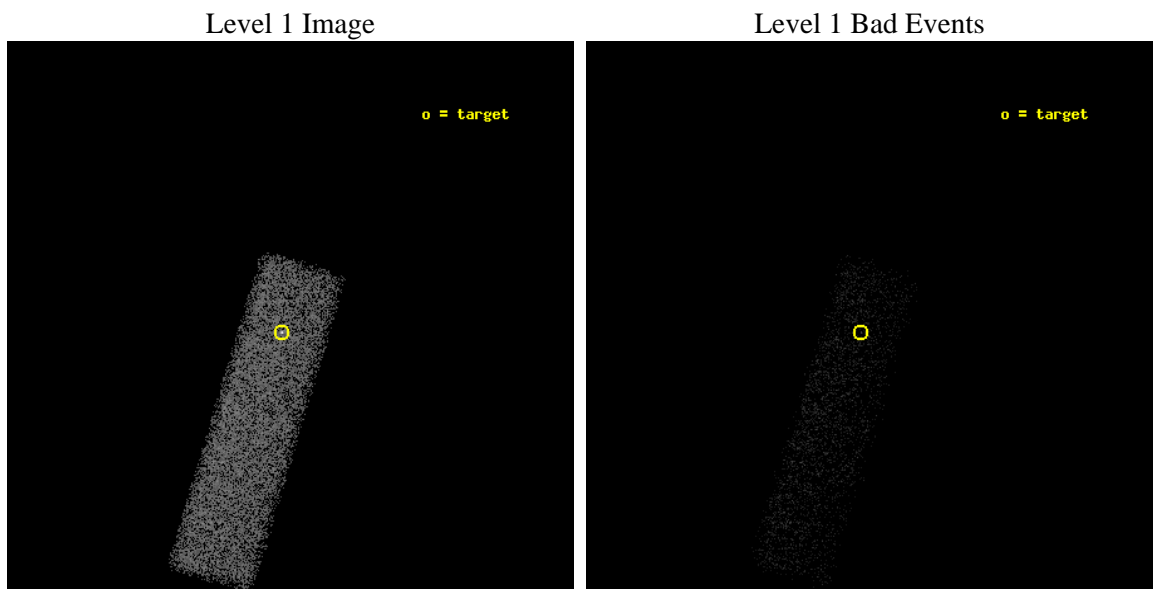
seq_num	701663	Sequence number
obs_id	9222	Observation id
title	A Simple Test of Quasar Outflow Models	Proposal title
observer	Professor Fred Hamann	Principal investigator
object	PKS 2044-168	Source name
dtcycle	0	&#160
cycle	P	events from which exps? Prim/Second/Both
ra_targ	311.832083	Observer's specified target RA [deg]
dec_targ	-16.651611	Observer's specified target Dec [deg]
ra_nom	311.82823148207	Nominal RA [deg]
dec_nom	-16.648365437356	Nominal Dec [deg]
roll_nom	106.8335376739	Nominal Roll [deg]
revision	2	Processing version of data
ontime	7142.4001064897	Sum of GTIs [s]
liveltime	6793.8743522208	Livetime [s]
ontime7	7142.4001064897	Sum of GTIs [s]
l2events	11250	Number of level 2 events



## 2 OBI

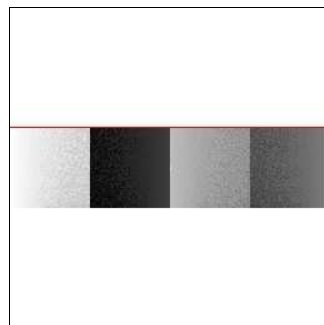
### 2.1 OBI

#### 2.1.1 Images



#### 2.1.2 Bias

Chip 7



### 2.1.3 Parameters

obi_num	0	Obi number	sched_exp_time	7000.000000	[s] Scheduled observation exposure time
ascdsver	8.4.4	Processing system revision	ontime	7142.4001064897	Sum of GTIs [s]
caldsver	4.4.9	&#160	ontime7	7142.4001064897	Sum of GTIs [s]
date	2012-05-16T14:53:15	Date and time of file creation	l1events	27535	Number of level 1 events
revision	2	Processing version of data			

### 2.1.4 Events

	<b>ccd 7</b>
level 1 events	27535
rejected events	15971
rejected %	58%

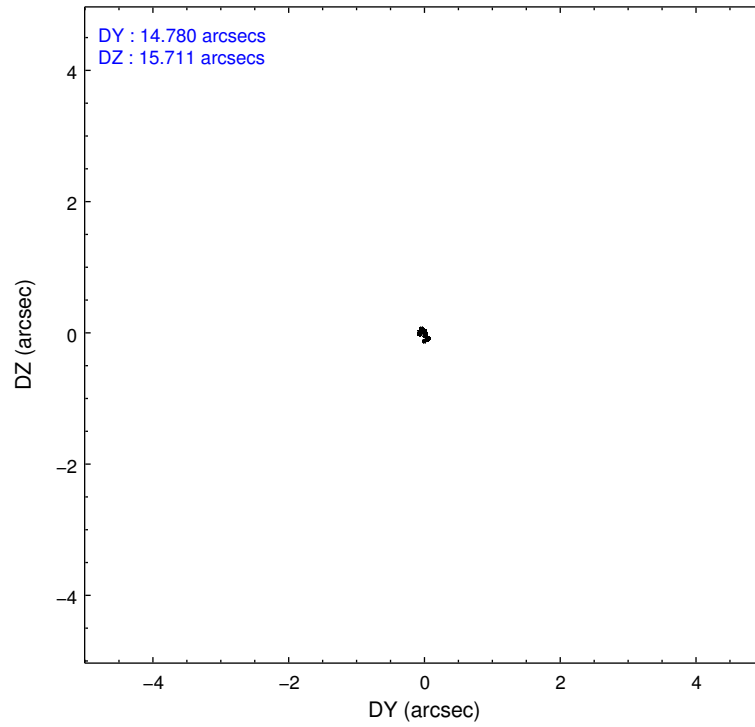
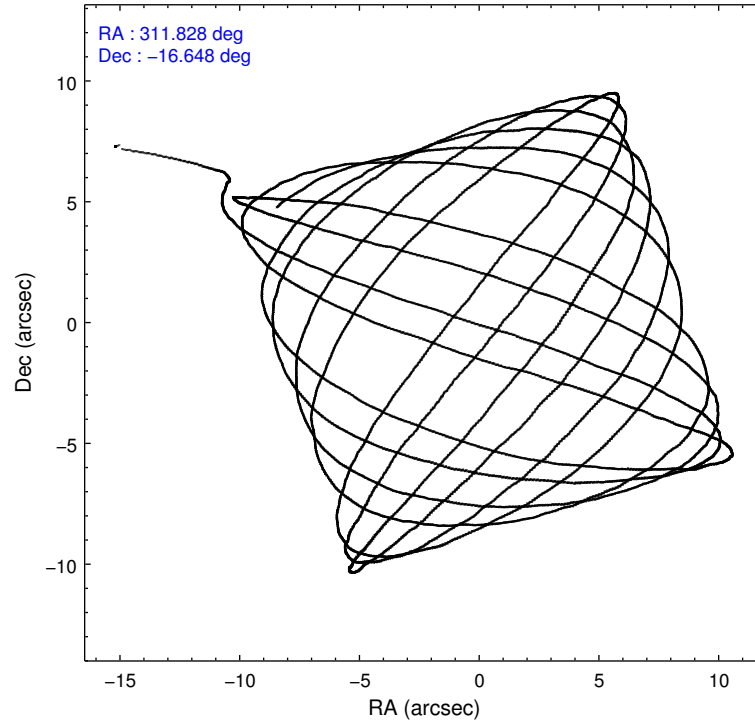
	<b>ccd 7</b>
grade 0 events	1427
	5%
grade 1 events	30
	0%
grade 2 events	2609
	9%
grade 3 events	1430
	5%
grade 4 events	1379
	5%
grade 5 events	2572
	9%
grade 6 events	6028
	21%
grade 7 events	12060
	43%

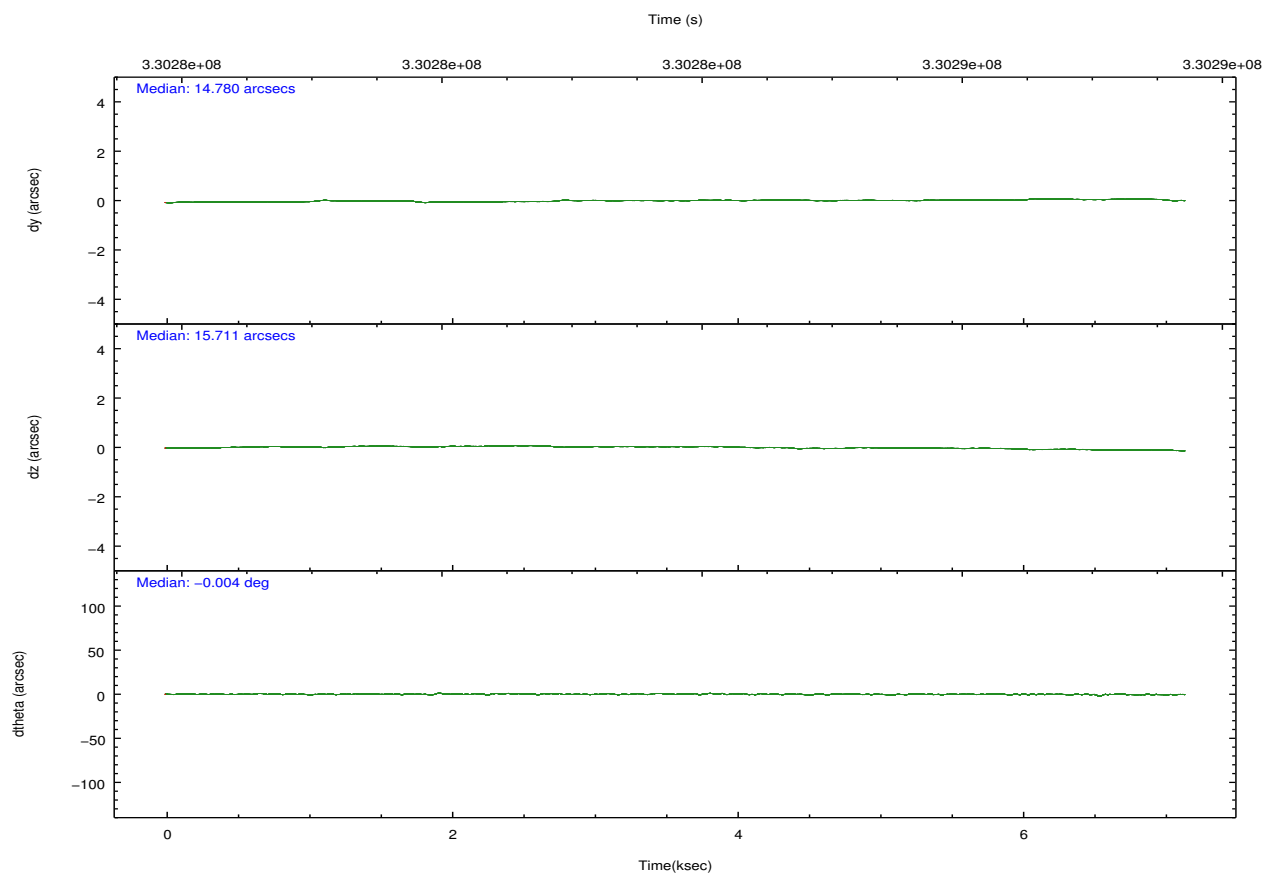
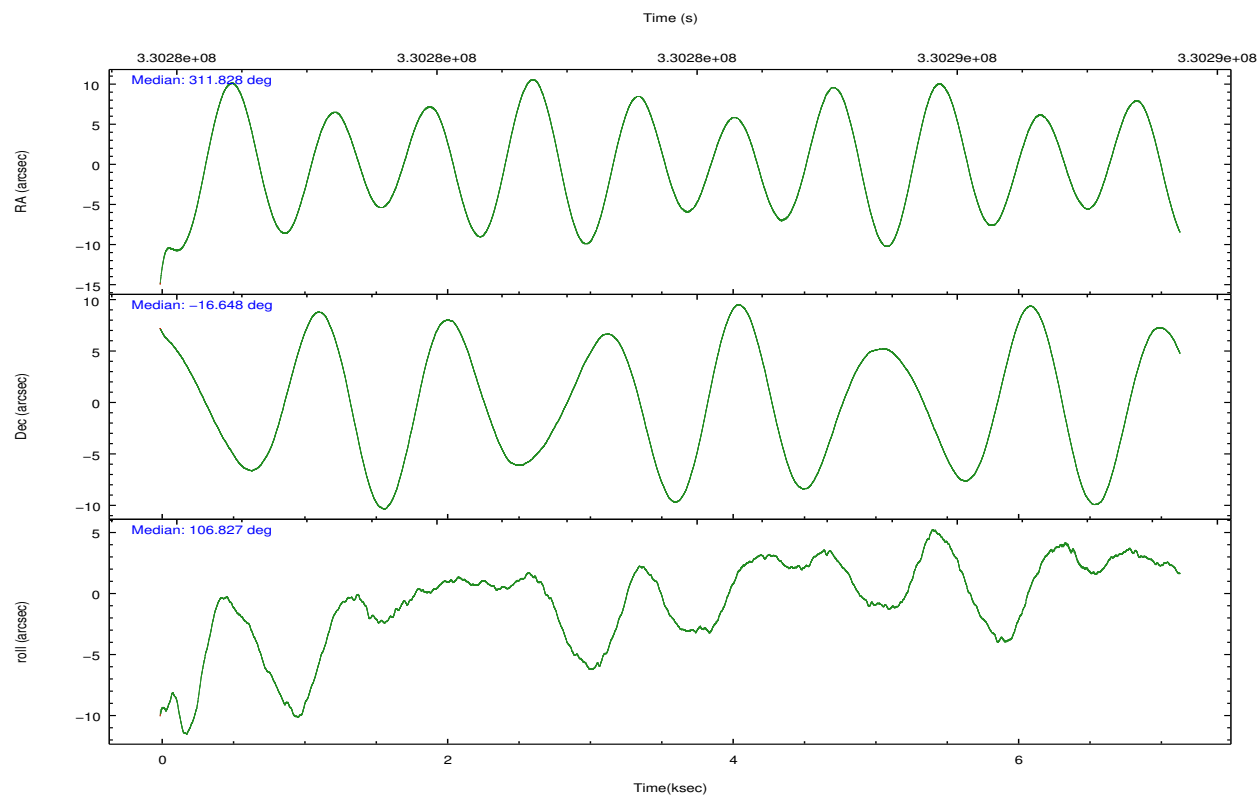


## 2.2 Compared Parameters

Parameter	Planned	Actual	Parameter	Planned	Actual
Instrument	ACIS	ACIS	Obspar format version number	7	7
Detector	ACIS-7	ACIS-7	Obspar file type	PREDICTED	ACTUAL
Grating	NONE	NONE	Obspar update status	NONE	UPDATED
Data mode	FAINT	FAINT	Number of optional ACIS chips dropped	0	0
Observation mode	POINTING	POINTING	On-chip summing requested	N	N
[deg] Pointing RA	311.849370	311.8282314820706	Subarray requested	CUSTOM	1/4
[deg] Pointing Dec	-16.666829	-16.64836543735622	Subarray start row	385	385
[deg] Pointing Roll	106.682976	106.8335376738961	Subarray row count	256	256
[mm] SIM focus pos	-0.684267	-0.6828225247311905	Alternating exposures requested	N	N
[mm] SIM defocus	0	0.001444936568705701	[s] Primary exposure time	0.000000	0.8
[mm] SIM translation stage pos	-190.132523	-190.1400660498719			
[mm] SIM translation stage offset	0	0.00754346686406393			
[s] Observation start time (MET)	330280354.184000	330279301.58274			
Observation start date	2008-06-19T16:31:29	2008-06-19T16:15:01			
[s] Observation end time (MET)	330287354.184000	330288492.24569			
Observation end date	2008-06-19T18:28:09	2008-06-19T18:48:12			
Read mode	TIMED	TIMED			

## 2.3 Aspect



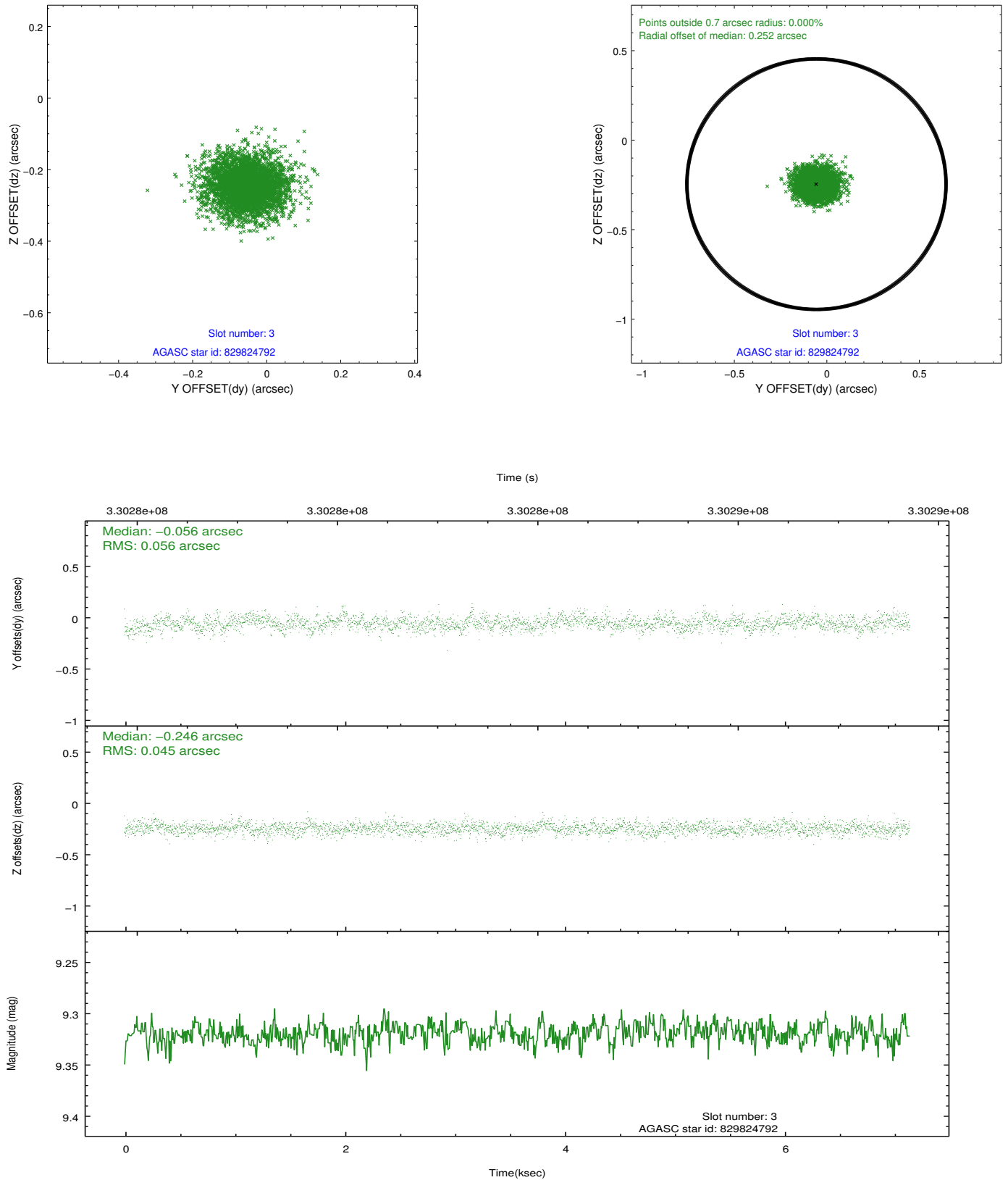


### Slot Statistics

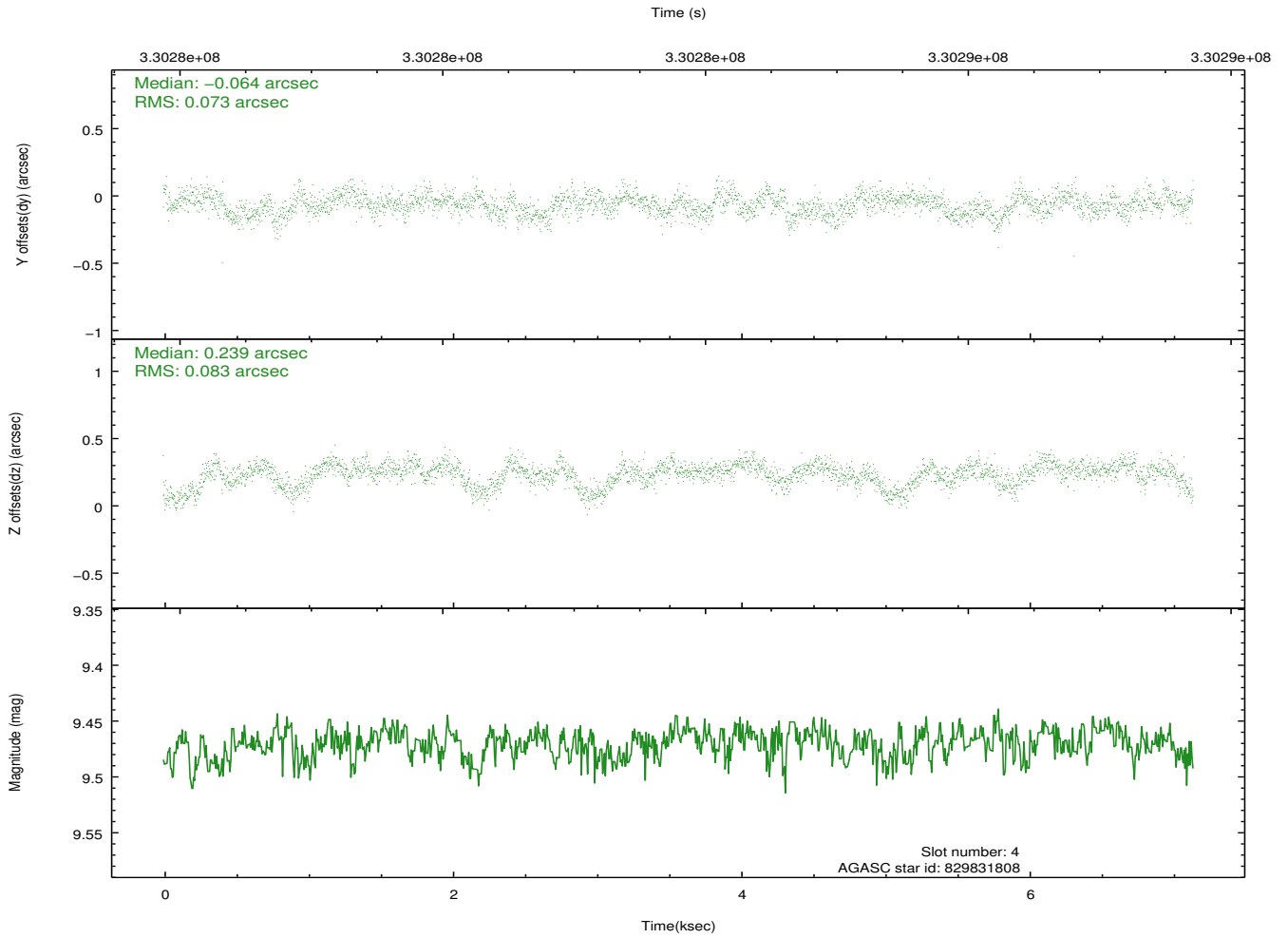
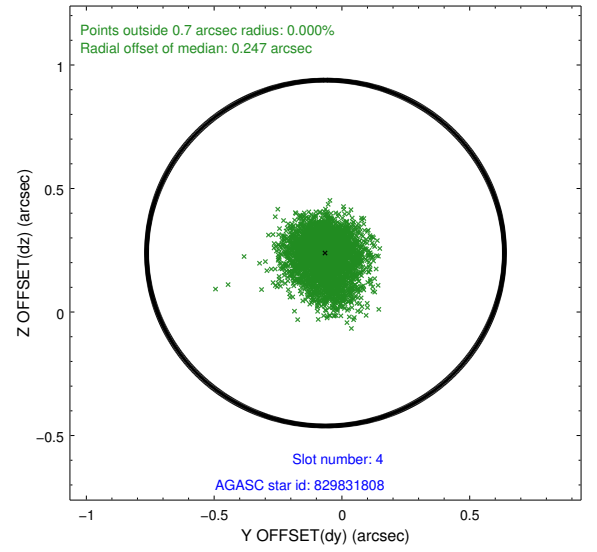
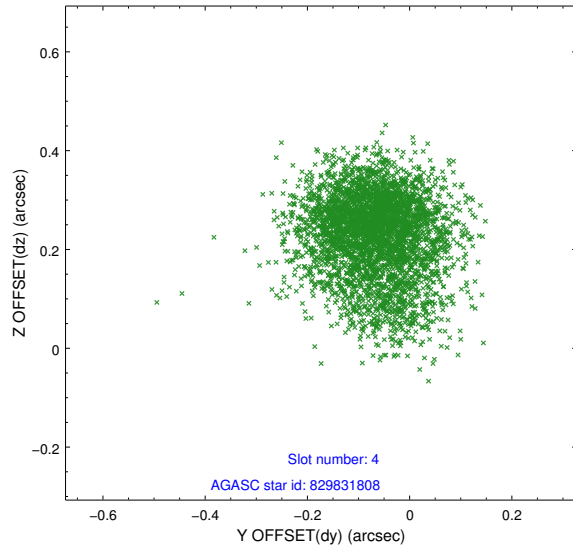
slot	status	id	mag	n_pts	med_dy	med_dz	dr1	dr2	ra	dec	mean_y	mean_z
0	FID	ACIS-S-2	6.89	1743	-0.083	-0.010	0.006	0.011	0.000000	0.000000	-767.81	-1737.11
1	FID	ACIS-S-4	6.98	1743	0.174	0.043	0.005	0.010	0.000000	0.000000	2145.34	170.60
2	FID	ACIS-S-5	7.00	1743	-0.122	-0.024	0.006	0.010	0.000000	0.000000	-1819.67	165.10
3	GUIDE	829824792	9.32	3481	-0.056	-0.246	0.076	0.124	311.639516	-16.270924	1573.08	285.69
4	GUIDE	829831808	9.47	3483	-0.064	0.239	0.117	0.193	311.929388	-16.117076	1816.92	-832.72
5	GUIDE	831531200	8.03	3486	0.236	0.071	0.069	0.109	312.054858	-16.738903	-451.79	-603.98
6	GUIDE	831533392	7.17	3486	-0.023	0.111	0.068	0.112	312.053841	-16.521325	298.54	-825.84
7	GUIDE	829827712	9.60	3480	-0.093	-0.163	0.127	0.191	311.222769	-16.352226	1702.38	1749.14

## 2.4 Star Slots

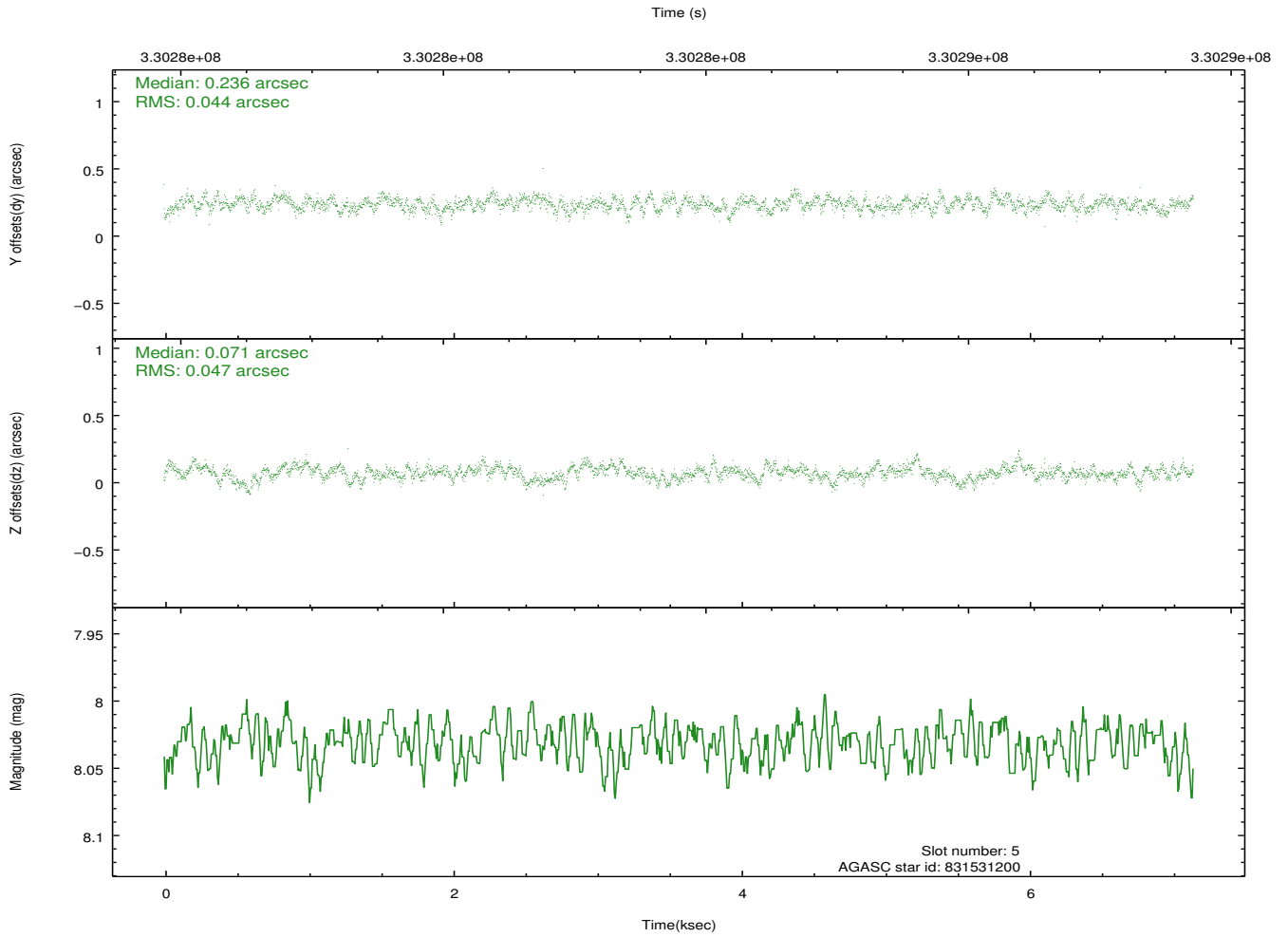
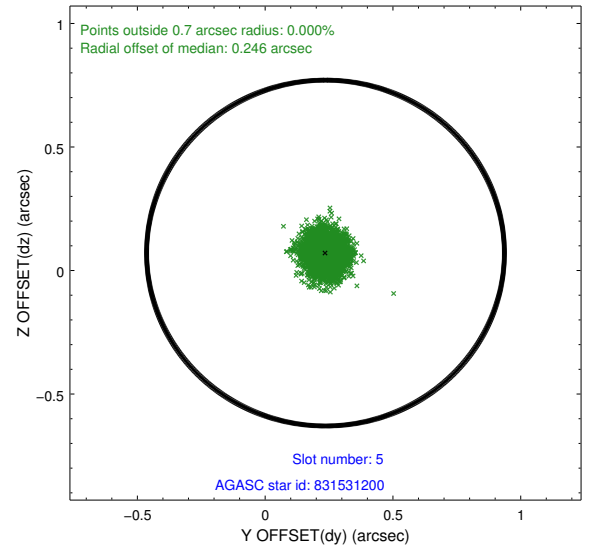
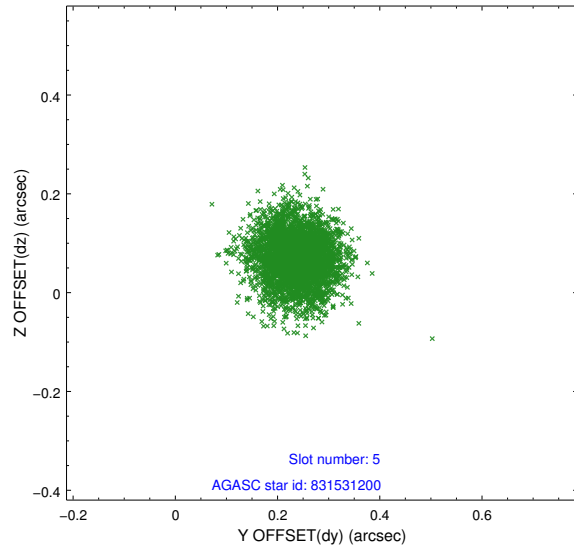
### 2.4.1 Slot 3



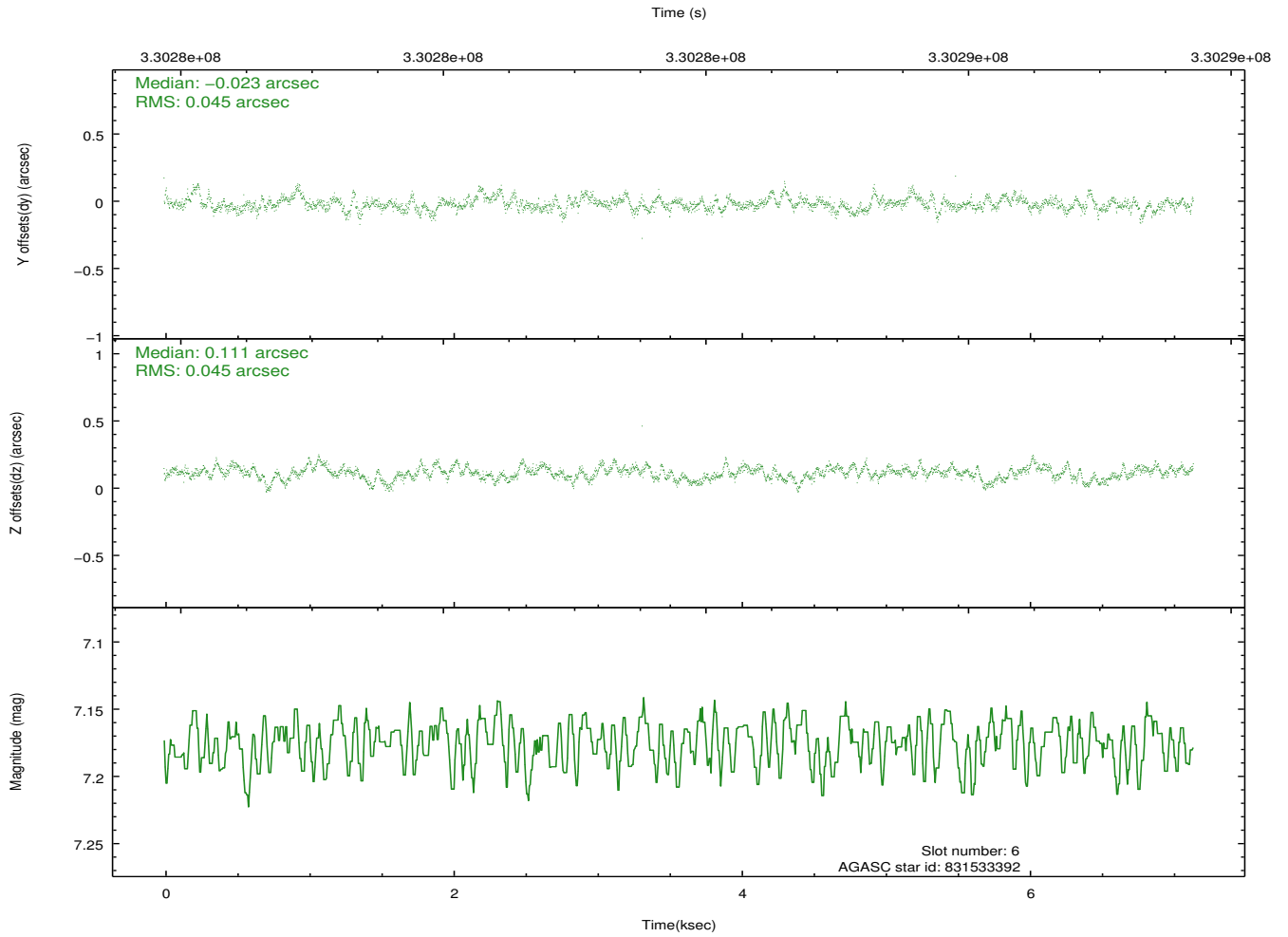
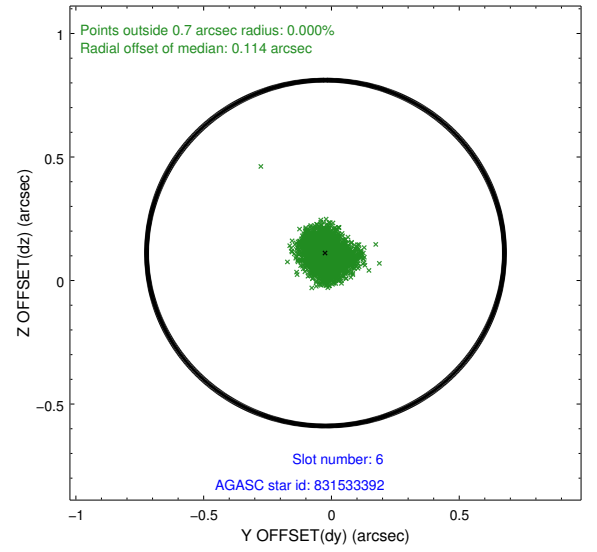
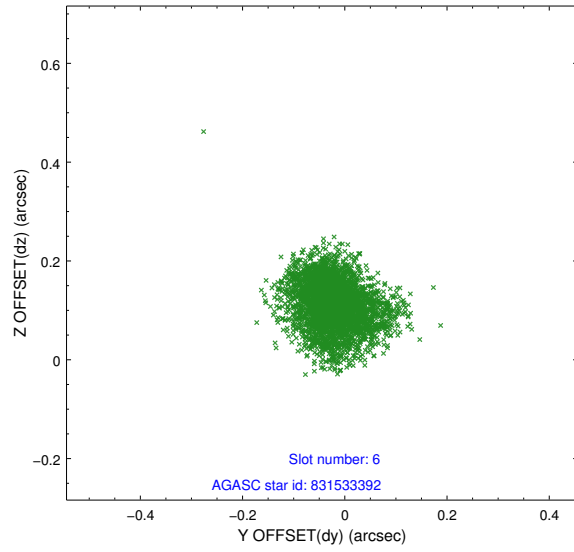
## 2.4.2 Slot 4



### 2.4.3 Slot 5

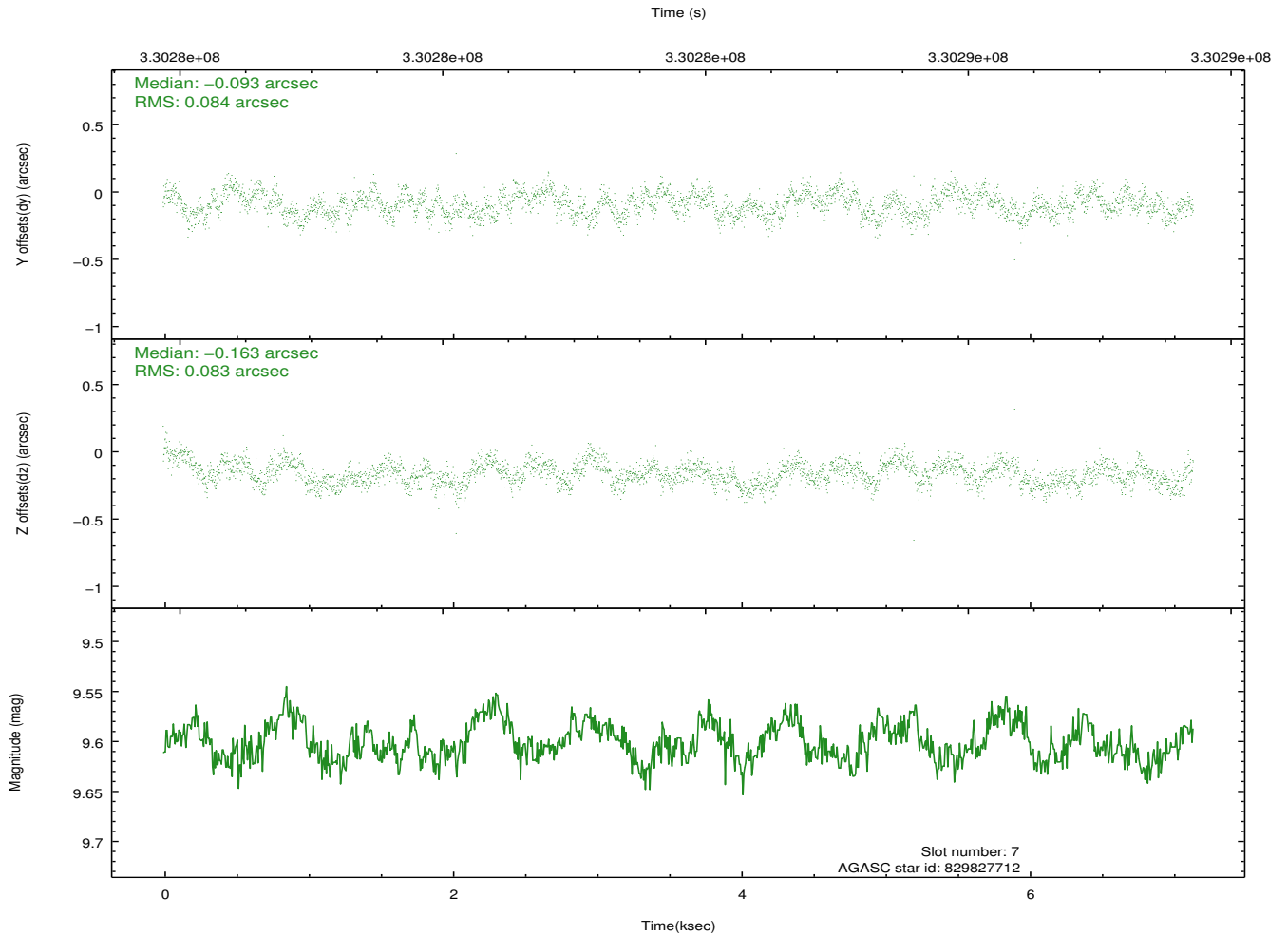
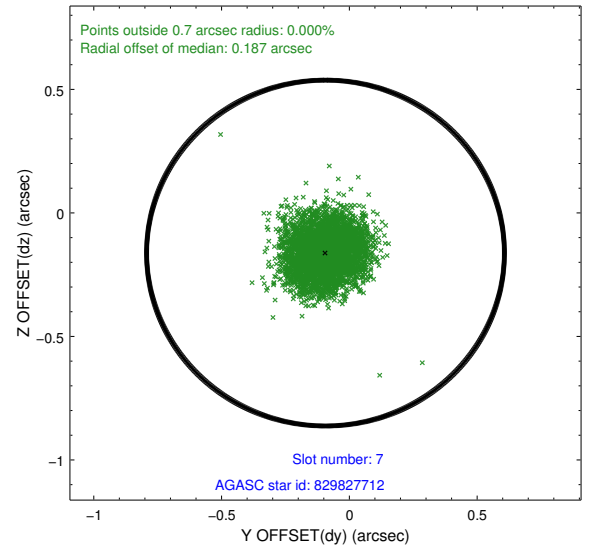
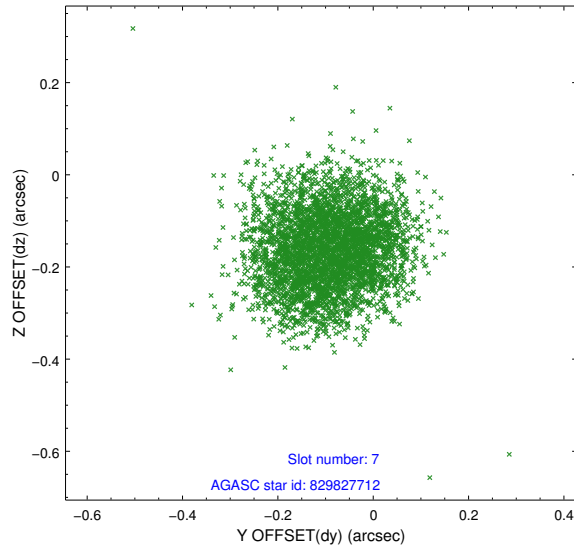


## 2.4.4 Slot 6



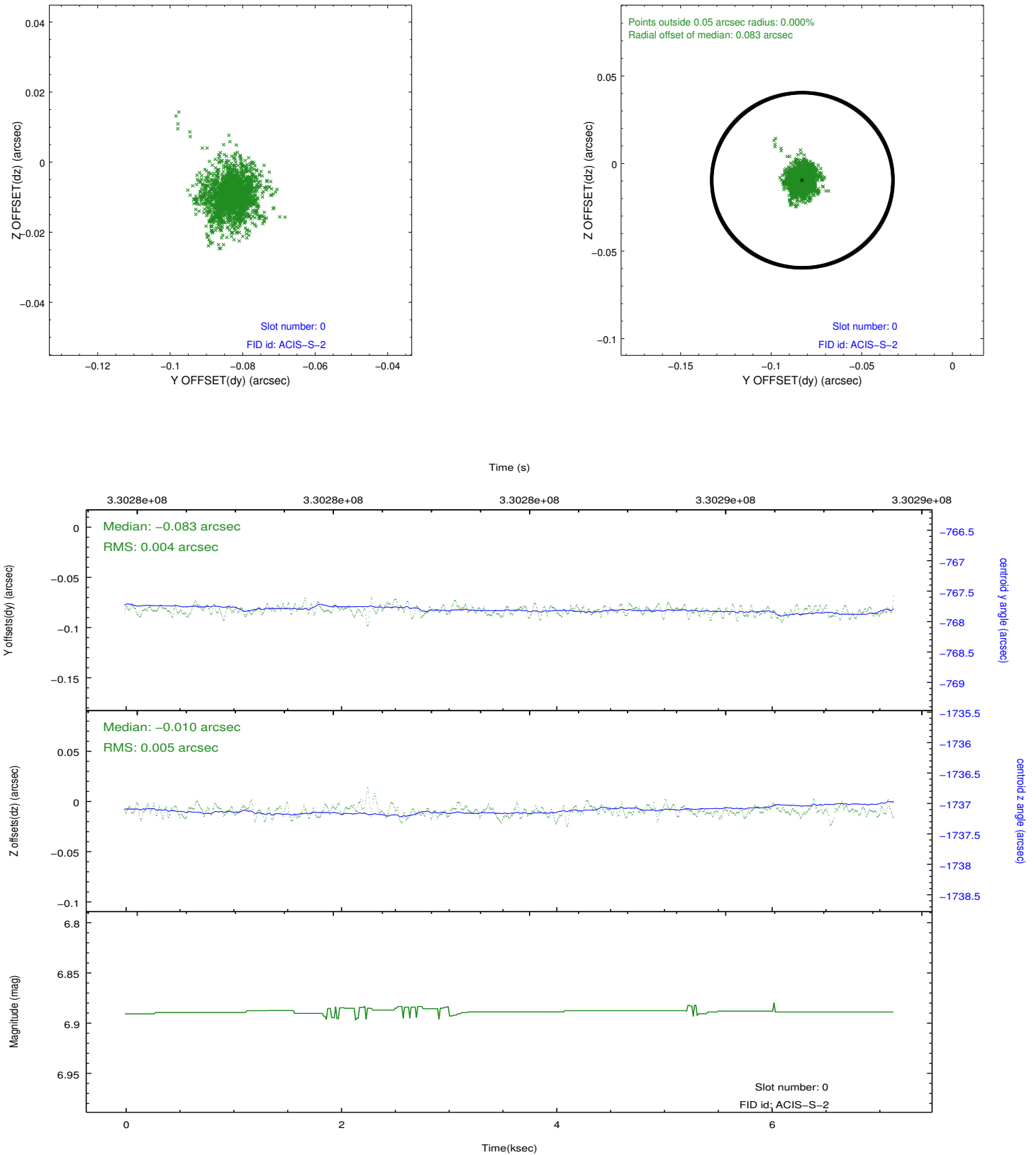


## 2.4.5 Slot 7

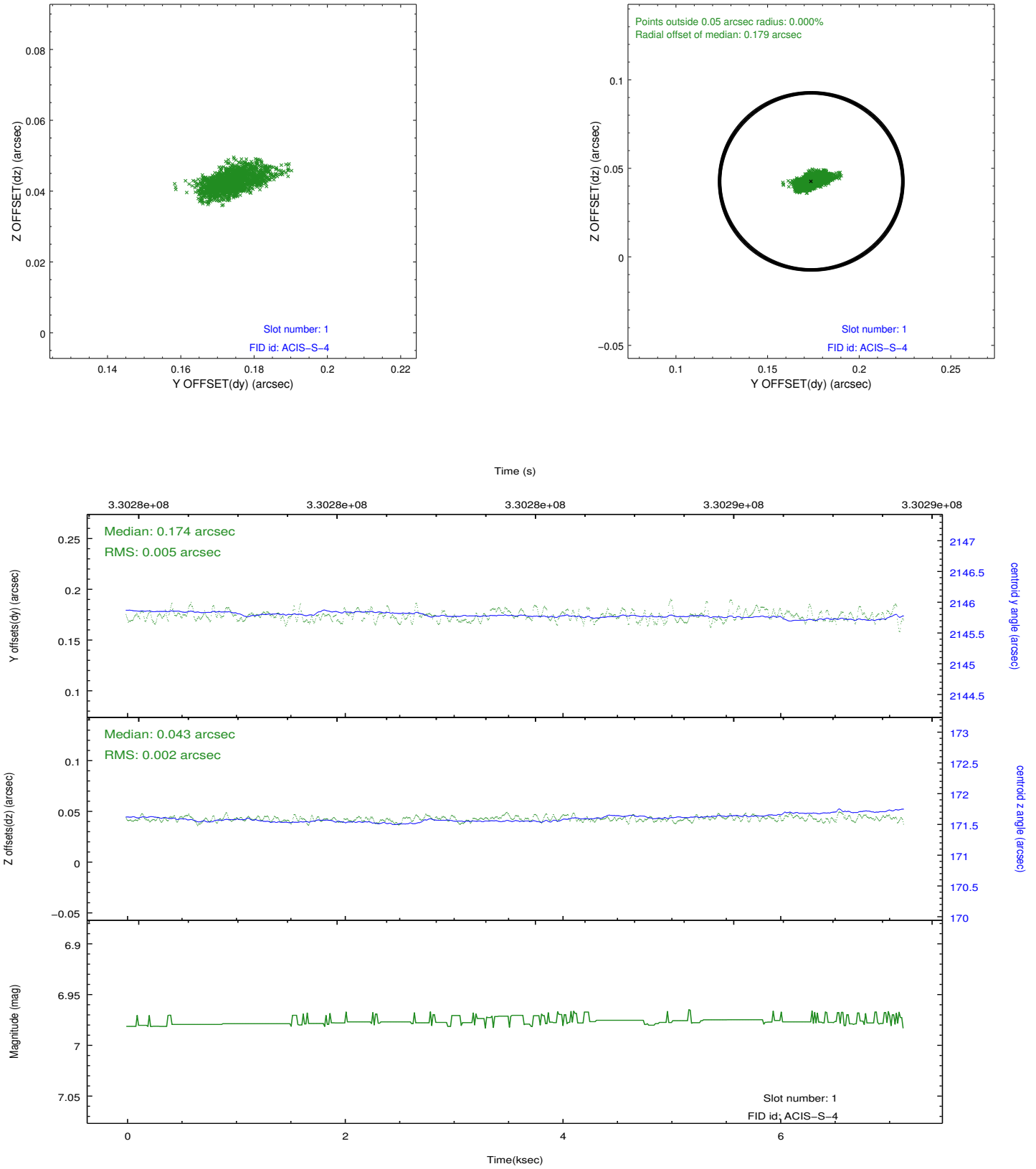


## 2.5 FID Slots

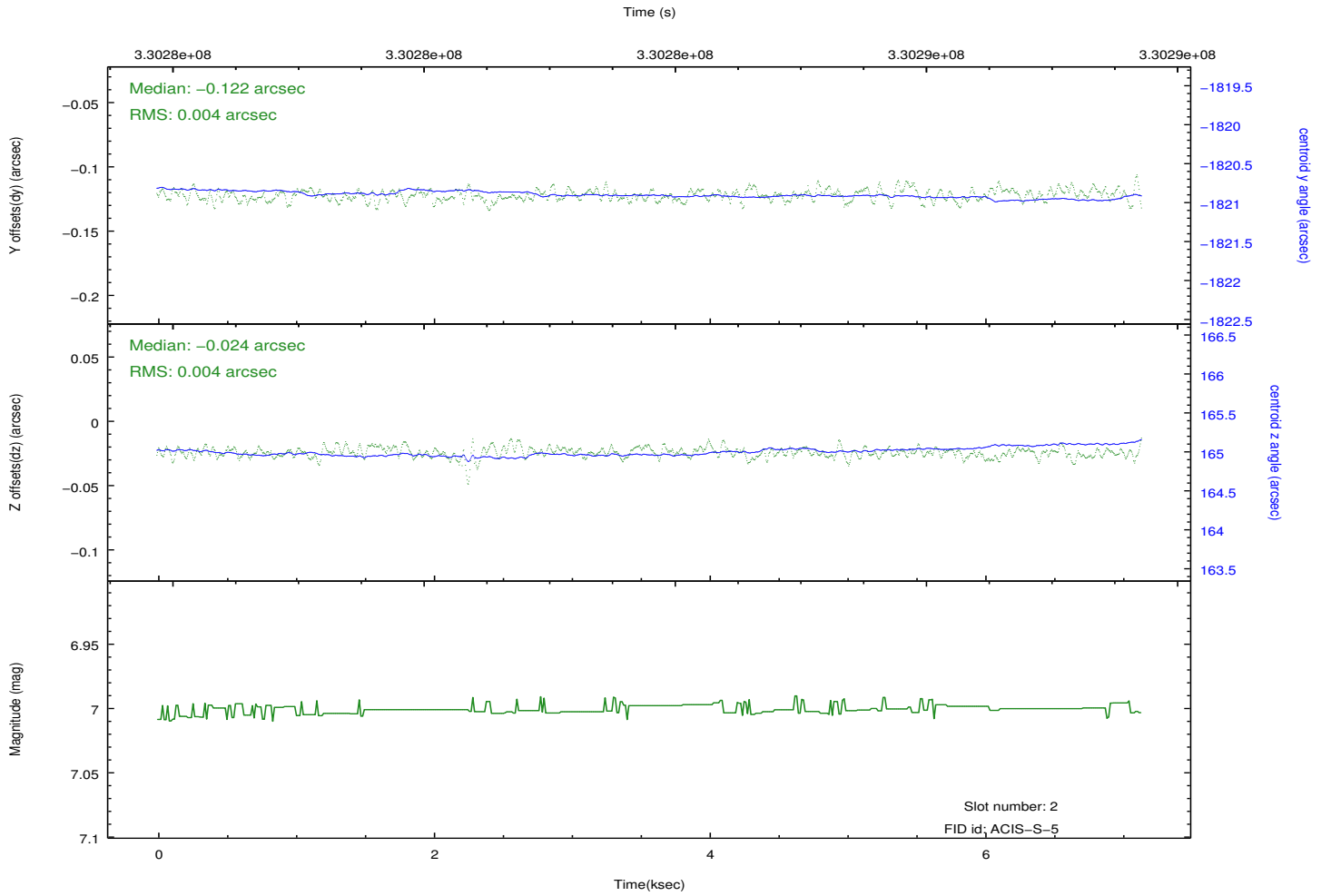
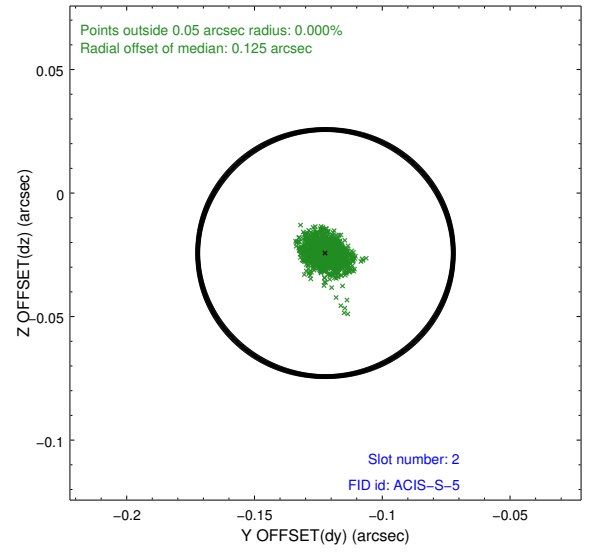
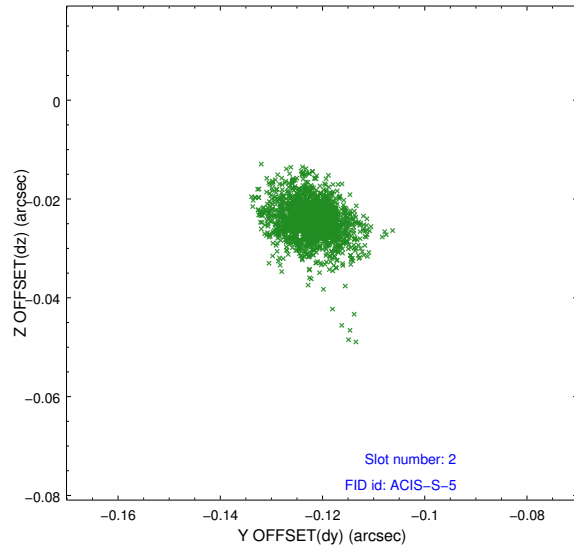
### 2.5.1 Slot 0



## 2.5.2 Slot 1



### 2.5.3 Slot 2



## A Summary

### A.1 Status

V&V Scientist	Beth Sundheim
V&V Date (YYYY-MM-DD)	2012.05.22
V&V Edition	1
V&V Disposition and Status	OK
V&V Charge Time	7.1424001

### A.2 Comments