

V&V Reference Report

L2 ASCDS Version : 8.4.4

Observation 9206 - L2 Version 2
Chandra X-Ray Center

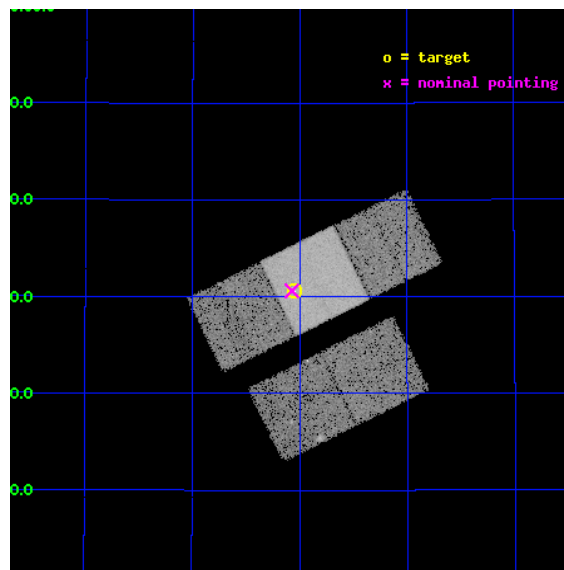
L2 Processing Date : May 23 2012

Contents

1	Front	2
2	OBI	3
2.1	OBI	3
2.1.1	Images	3
2.1.2	Bias	3
2.1.3	Parameters	4
2.1.4	Events	4
2.2	Compared Parameters	5
2.3	Aspect	6
2.4	Star Slots	9
2.4.1	Slot 3	9
2.4.2	Slot 4	10
2.4.3	Slot 5	11
2.4.4	Slot 6	12
2.4.5	Slot 7	13
2.5	FID Slots	14
2.5.1	Slot 0	14
2.5.2	Slot 1	15
2.5.3	Slot 2	16
A	Summary	17
A.1	Status	17
A.2	Comments	17

1 Front

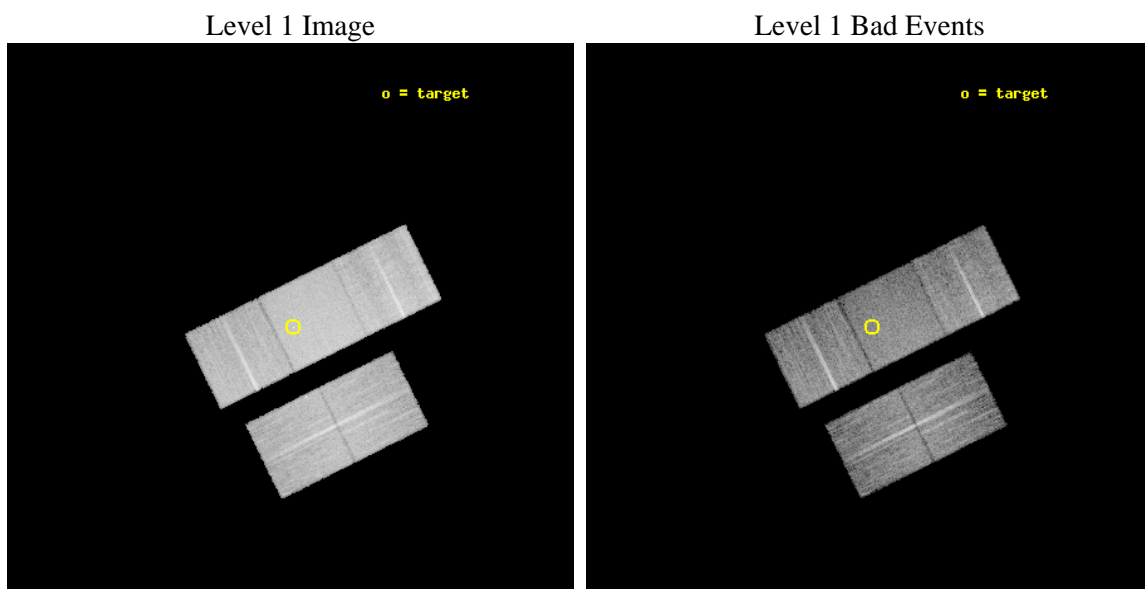
seq_num	701648	Sequence number
obs_id	9206	Observation id
title	Lower Luminosity AGNs at Cosmologically Interesting Redshifts: SEDs and Accretion Rates of $z \sim 0.36$ Seyferts	Proposal title
observer	Dr. Sarah Gallagher	Principal investigator
object	S99	Source name
dtcycle	0	
cycle	P	events from which exps? Prim/Second/Both
ra_targ	240.011667	Observer's specified target RA [deg]
dec_targ	41.509722	Observer's specified target Dec [deg]
ra_nom	240.01820467007	Nominal RA [deg]
dec_nom	41.510200086359	Nominal Dec [deg]
roll_nom	333.75995509373	Nominal Roll [deg]
revision	2	Processing version of data
ontime	10130.800077915	Sum of GTIs [s]
livetime	9998.4337167107	Livetime [s]
ontime2	10130.800077915	Sum of GTIs [s]
ontime3	10130.800077915	Sum of GTIs [s]
ontime6	10130.800077915	Sum of GTIs [s]
ontime7	10130.800077915	Sum of GTIs [s]
ontime8	10130.800077915	Sum of GTIs [s]
l2events	101016	Number of level 2 events



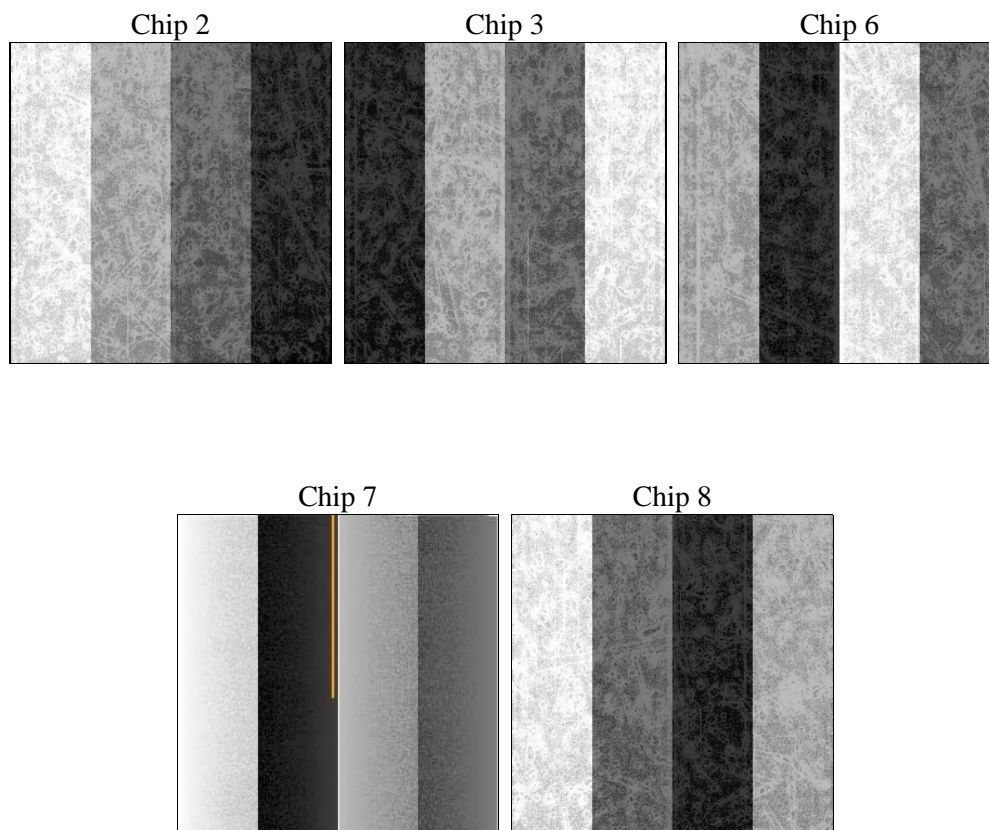
2 OBI

2.1 OBI

2.1.1 Images



2.1.2 Bias



2.1.3 Parameters

obi_num	0	Obi number	sched_exp_time	10100.000000	[s] Scheduled observation exposure time
ascdsver	8.4.4	Processing system revision	ontime	10130.800077915	Sum of GTIs [s]
caldsver	4.4.9	 	ontime2	10130.800077915	Sum of GTIs [s]
date	2012-05-23T12:03:08	Date and time of file creation	ontime3	10130.800077915	Sum of GTIs [s]
revision	2	Processing version of data	ontime6	10130.800077915	Sum of GTIs [s]
			ontime7	10130.800077915	Sum of GTIs [s]
			ontime8	10130.800077915	Sum of GTIs [s]
			l1events	558274	Number of level 1 events

2.1.4 Events

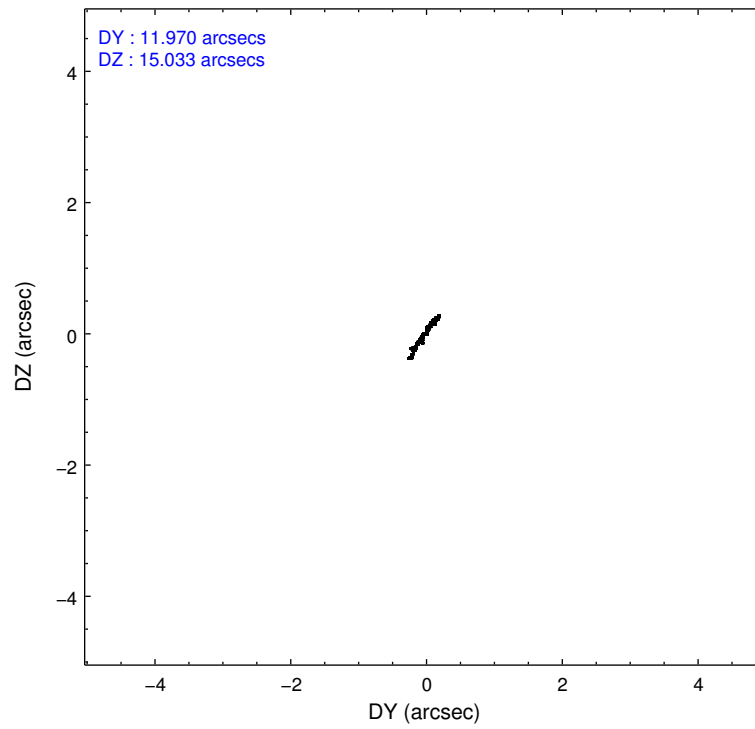
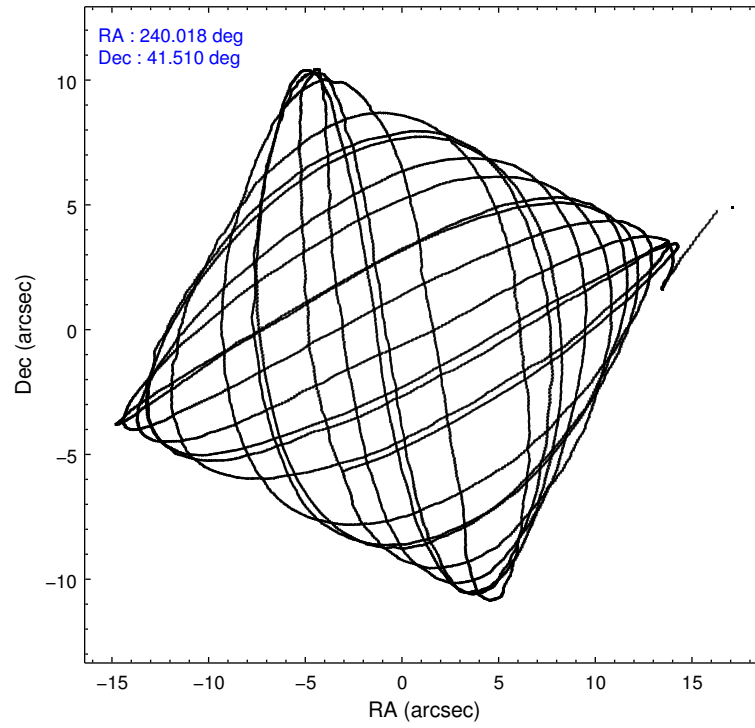
	ccd 2	ccd 3	ccd 6	ccd 7	ccd 8
level 1 events	95634	95189	101025	139257	127169
rejected events	83179	83231	88330	81713	96712
rejected %	86%	87%	87%	58%	76%

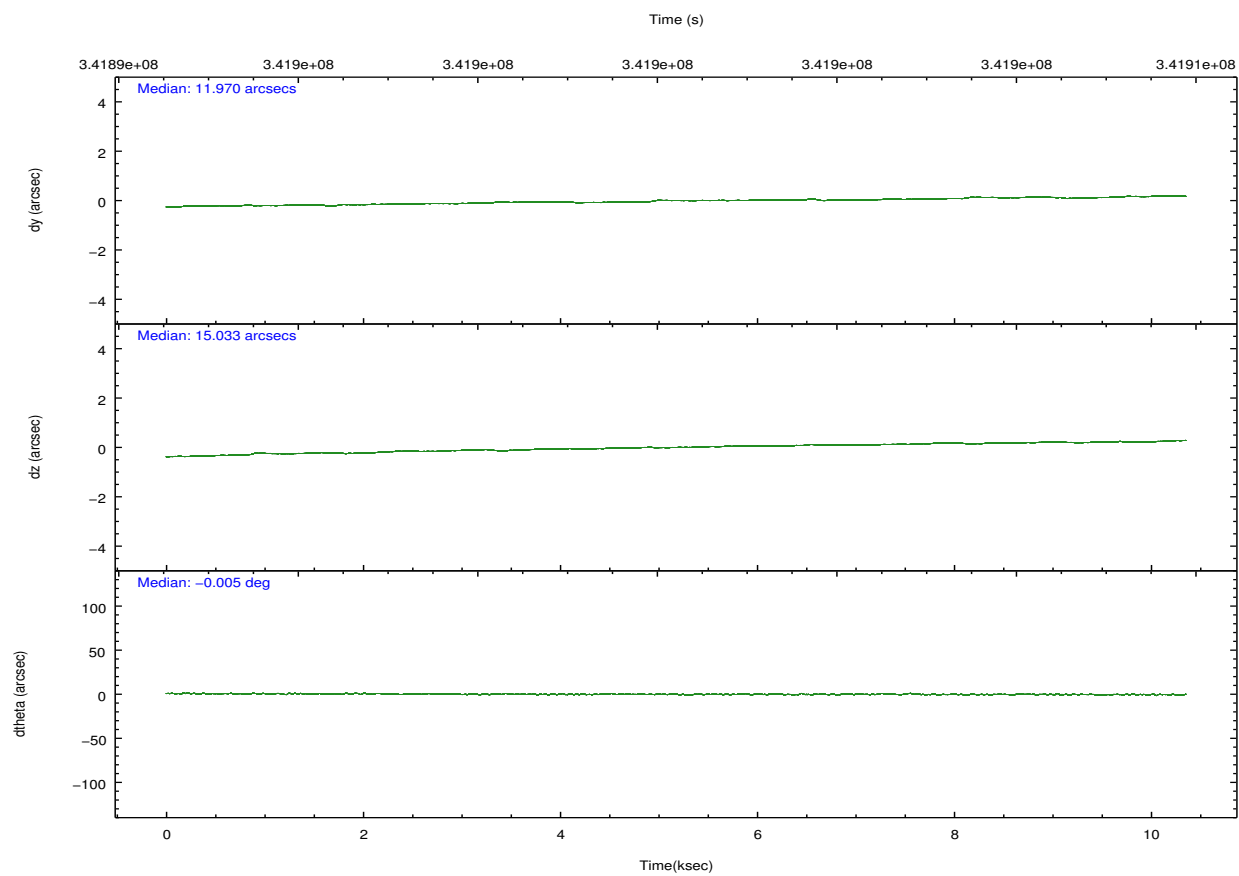
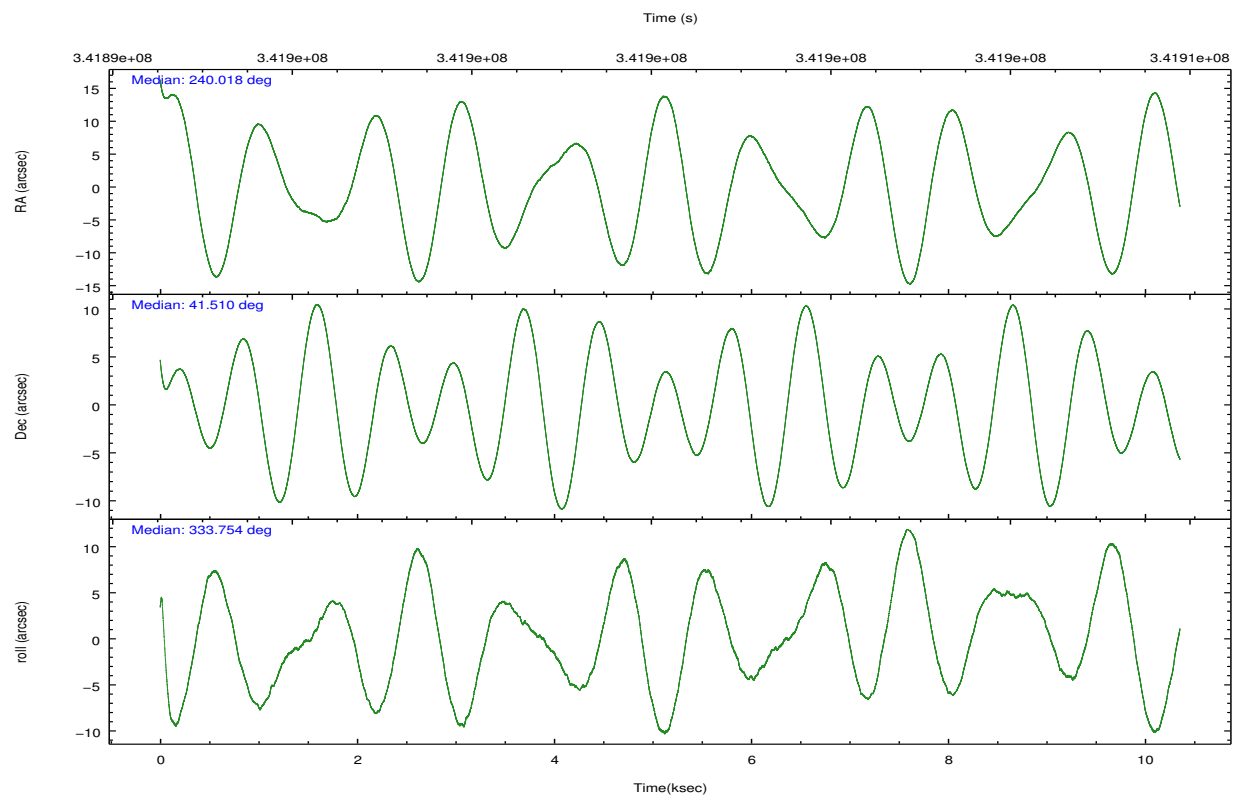
	ccd 2	ccd 3	ccd 6	ccd 7	ccd 8
grade 0 events	5816	5123	5115	4935	9371
	6%	5%	5%	3%	7%
grade 1 events	72	49	51	155	96
	0%	0%	0%	0%	0%
grade 2 events	2536	2357	2794	11694	6973
	2%	2%	2%	8%	5%
grade 3 events	1057	1168	1118	4750	3050
	1%	1%	1%	3%	2%
grade 4 events	1102	1151	1136	4573	2850
	1%	1%	1%	3%	2%
grade 5 events	3955	4659	4788	12950	6259
	4%	4%	4%	9%	4%
grade 6 events	1951	2164	2539	31618	8217
	2%	2%	2%	22%	6%
grade 7 events	79145	78518	83484	68582	90353
	82%	82%	82%	49%	71%

2.2 Compared Parameters

Parameter	Planned	Actual	Parameter	Planned	Actual
Instrument	ACIS	ACIS	Obspar format version number	7	7
Detector	ACIS-23678	ACIS-23678	Obspar file type	PREDICTED	ACTUAL
Grating	NONE	NONE	Obspar update status	NONE	UPDATED
Data mode	FAINT	FAINT	CCD I0 on	N	N
Observation mode	POINTING	POINTING	CCD I1 on	N	N
[deg] Pointing RA	239.981716	240.0182046700747	CCD I2 on	O1	Y
[deg] Pointing Dec	41.508013	41.51020008635871	CCD I3 on	Y	Y
[deg] Pointing Roll	333.627492	333.7599550937254	CCD S0 on	N	N
[mm] SIM focus pos	-0.684267	-0.6828225247311905	CCD S1 on	N	N
[mm] SIM defocus	0	0.001444936568705701	CCD S2 on	Y	Y
[mm] SIM translation stage pos	-190.132523	-190.1425803651734	CCD S3 on	Y	Y
[mm] SIM translation stage offset	0	0.01005778216563158	CCD S4 on	Y	Y
[s] Observation start time (MET)	341895290.184000	341894324.66284	CCD S5 on	N	N
Observation start date	2008-11-01T02:53:45	2008-11-01T02:38:44	Number of optional ACIS chips dropped	0	0
[s] Observation end time (MET)	341905390.184000	341906362.26344	On-chip summing requested	N	N
Observation end date	2008-11-01T05:42:05	2008-11-01T05:59:22	Subarray requested	NONE	NONE
Read mode	TIMED	TIMED	Alternating exposures requested	N	N
			[s] Primary exposure time	0.000000	3.1

2.3 Aspect



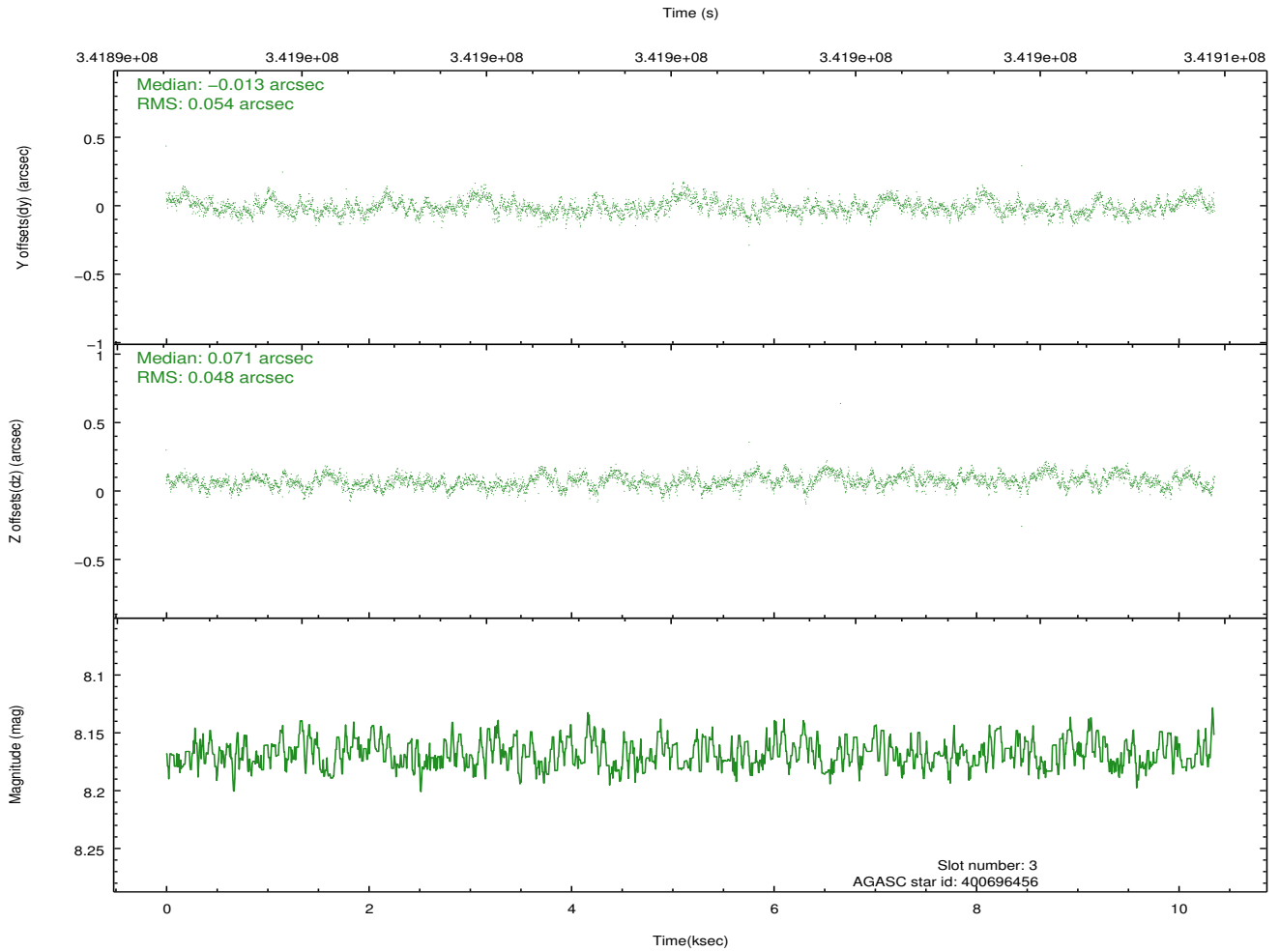
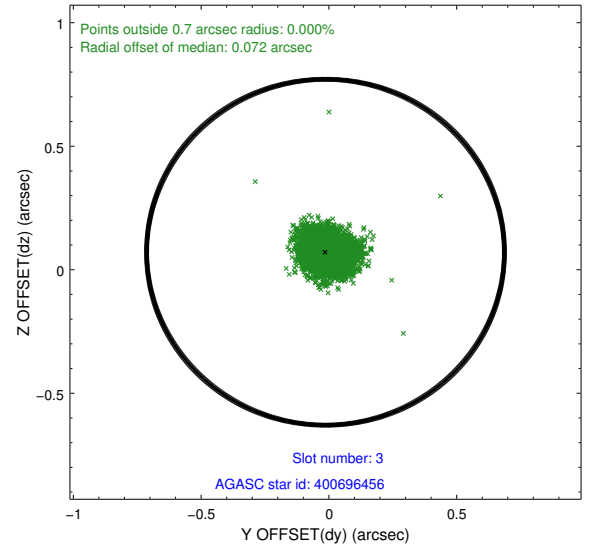
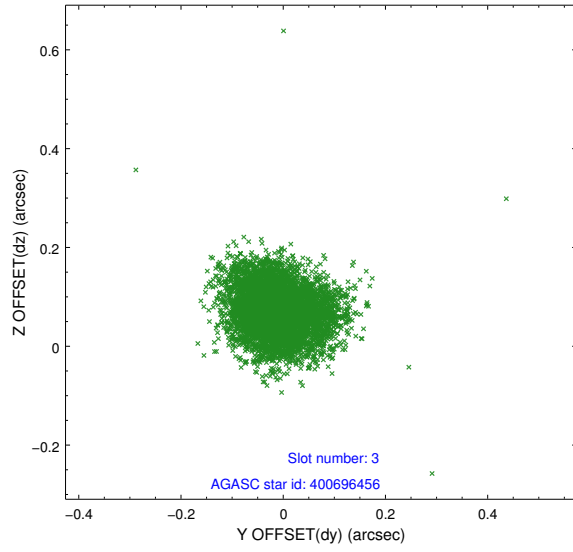


Slot Statistics

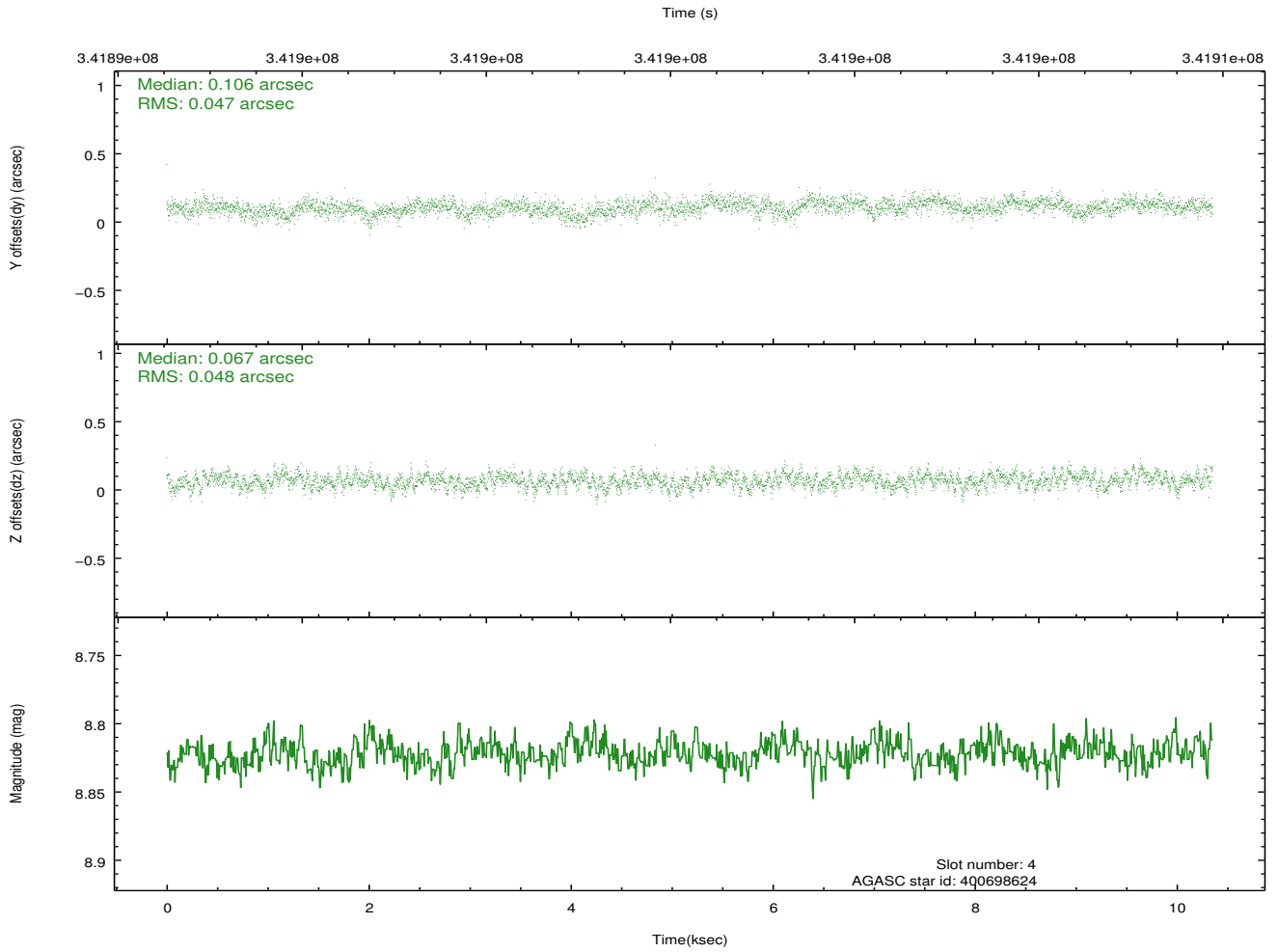
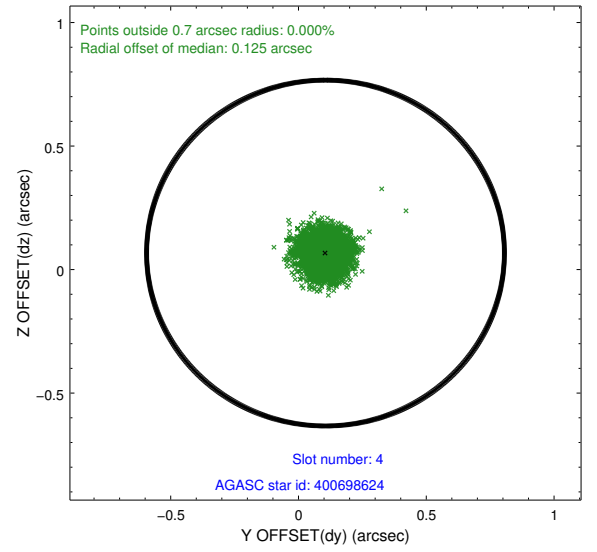
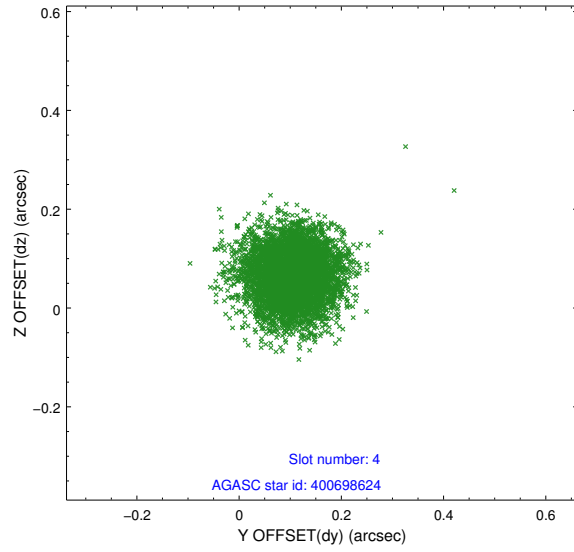
slot	status	id	mag	n_pts	med_dy	med_dz	dr1	dr2	ra	dec	mean_y	mean_z
0	FID	ACIS-S-2	6.85	2526	-0.034	0.014	0.012	0.017	0.000000	0.000000	-764.84	-1736.34
1	FID	ACIS-S-4	6.94	2525	0.088	0.013	0.013	0.018	0.000000	0.000000	2148.30	171.65
2	FID	ACIS-S-5	6.96	2526	-0.086	-0.018	0.012	0.017	0.000000	0.000000	-1817.11	165.82
3	GUIDE	400696456	8.17	5051	-0.013	0.071	0.077	0.121	239.985643	40.893125	993.01	-1978.25
4	GUIDE	400698624	8.82	5051	0.106	0.067	0.072	0.117	239.203608	41.571592	-1983.18	-717.81
5	GUIDE	401608920	7.97	5051	-0.154	-0.003	0.063	0.098	240.348186	41.796189	418.82	1367.95
6	GUIDE	401610912	9.64	5046	0.023	0.007	0.108	0.174	240.327123	41.408647	993.88	95.86
7	GUIDE	401614960	9.15	5049	0.038	-0.137	0.087	0.142	240.560353	41.585914	1269.67	947.78

2.4 Star Slots

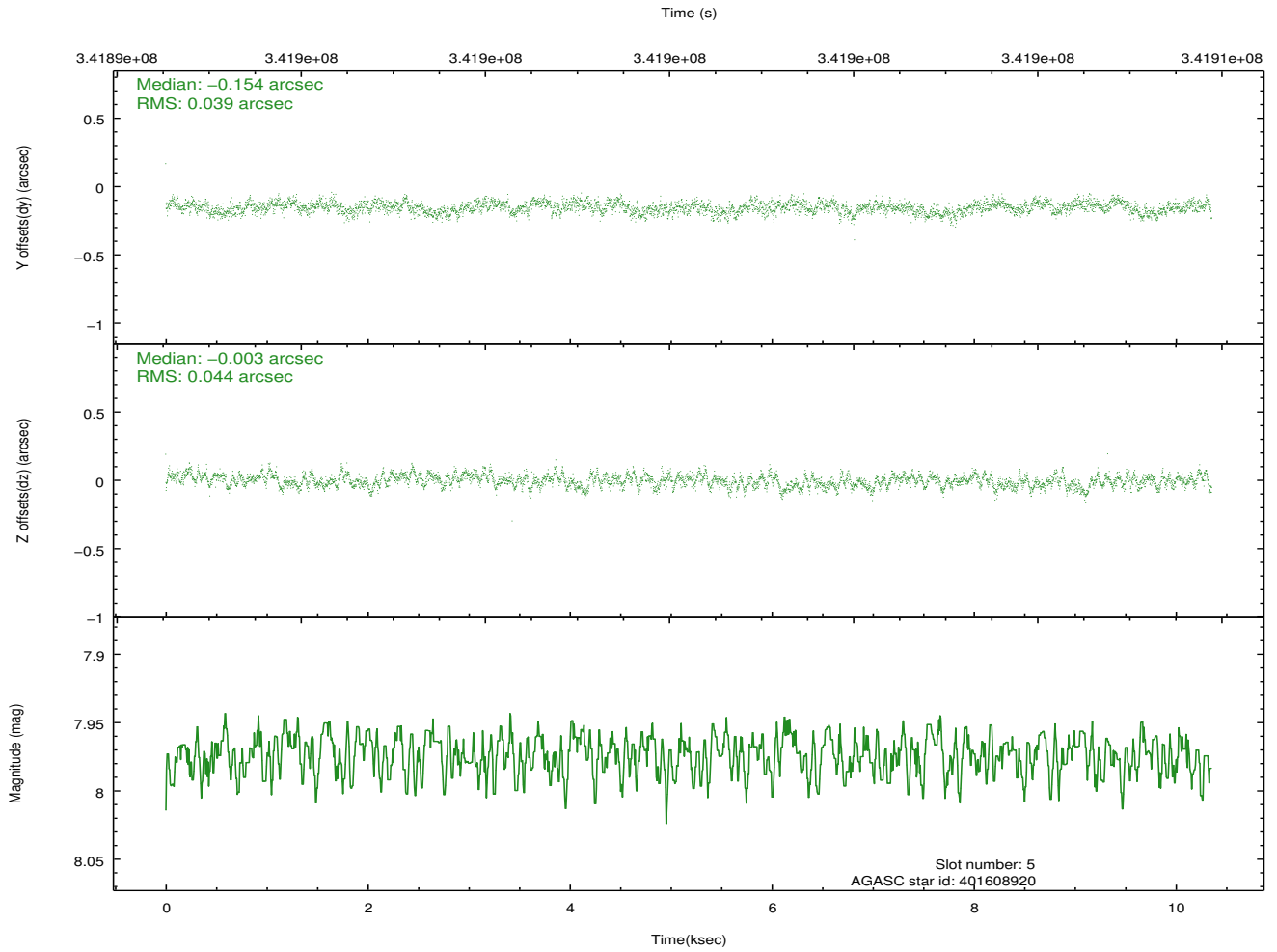
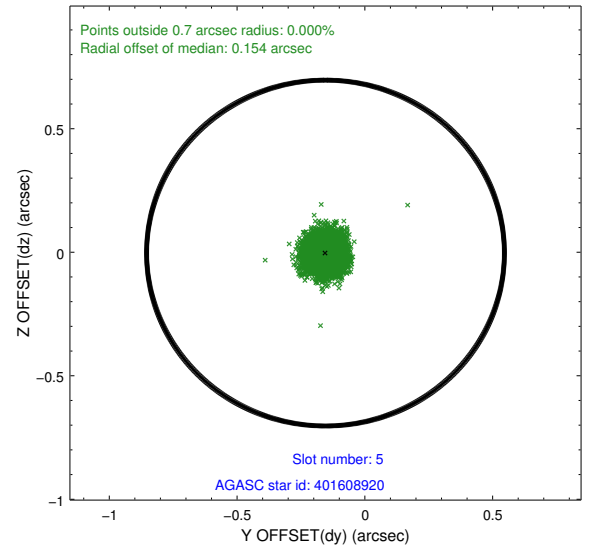
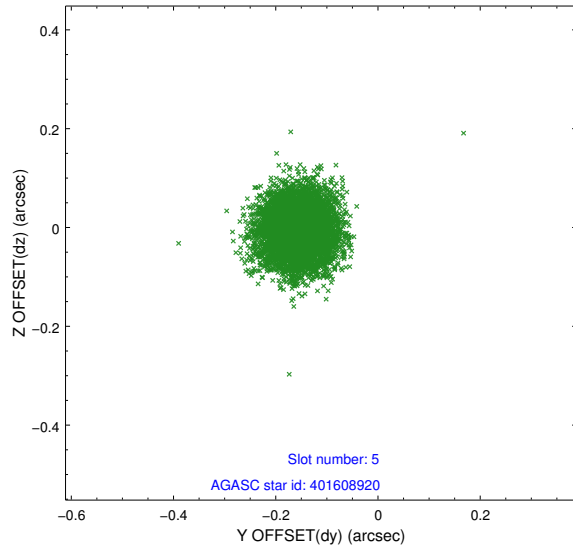
2.4.1 Slot 3



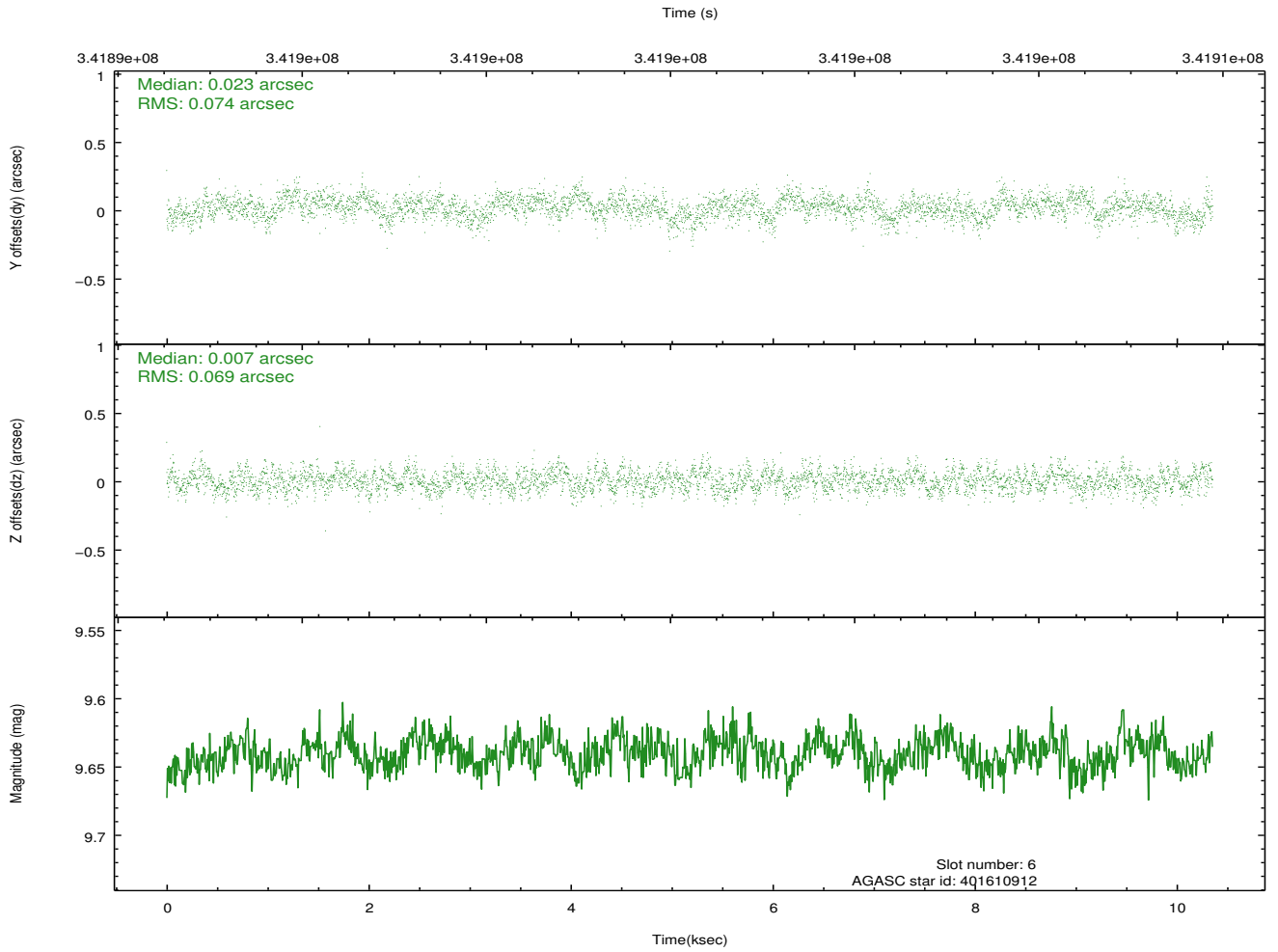
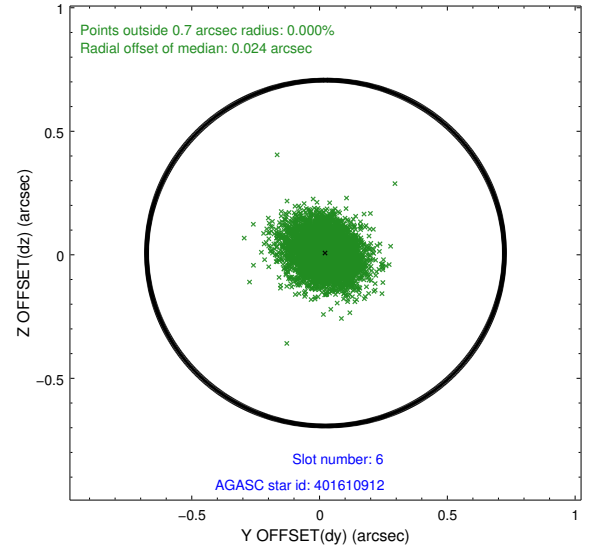
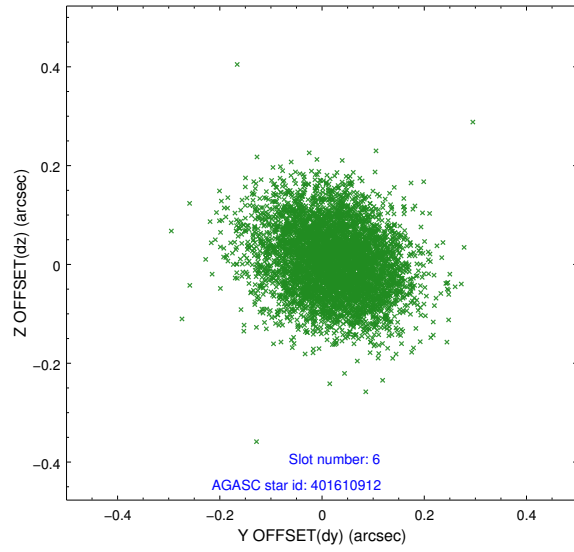
2.4.2 Slot 4



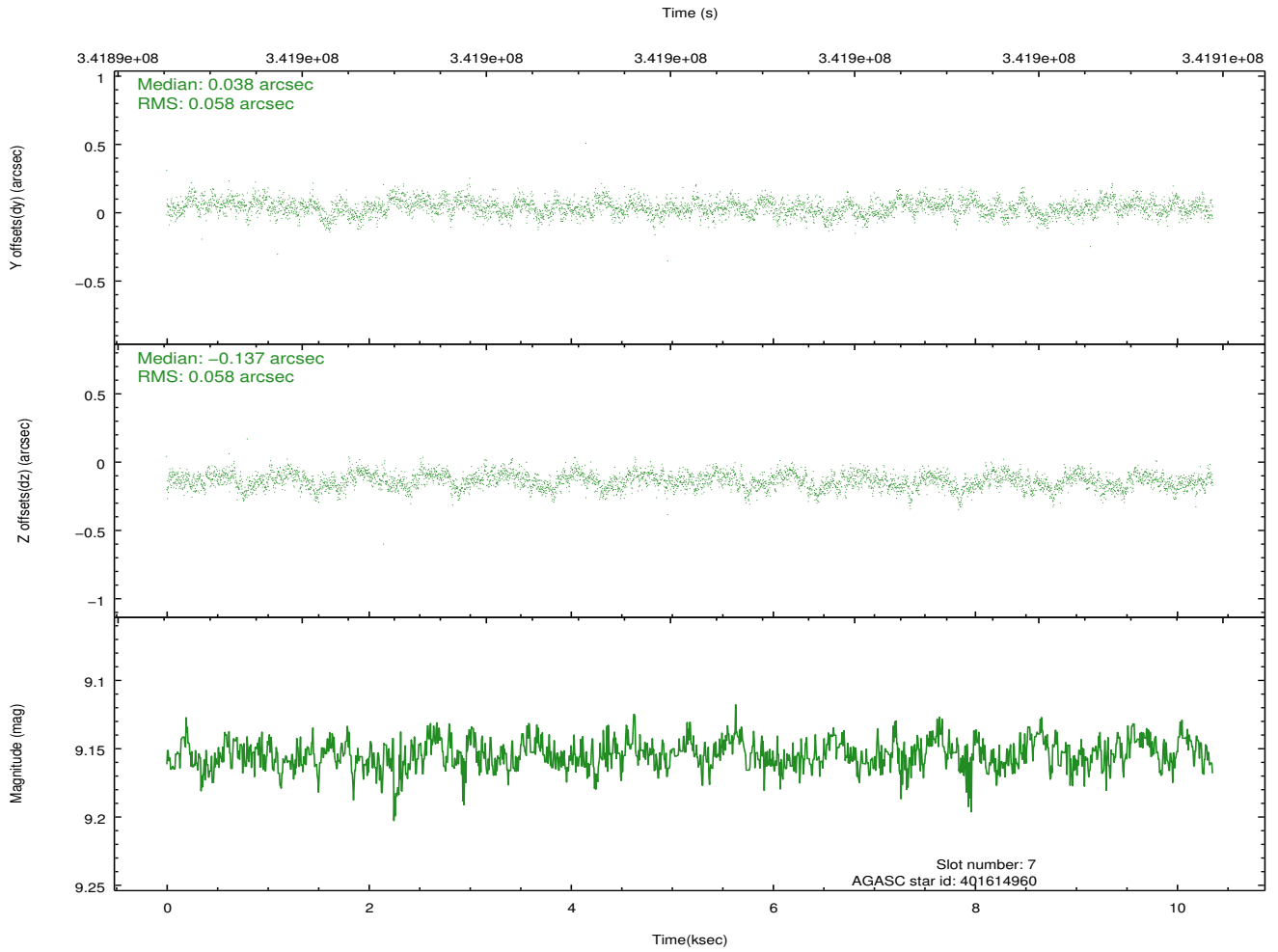
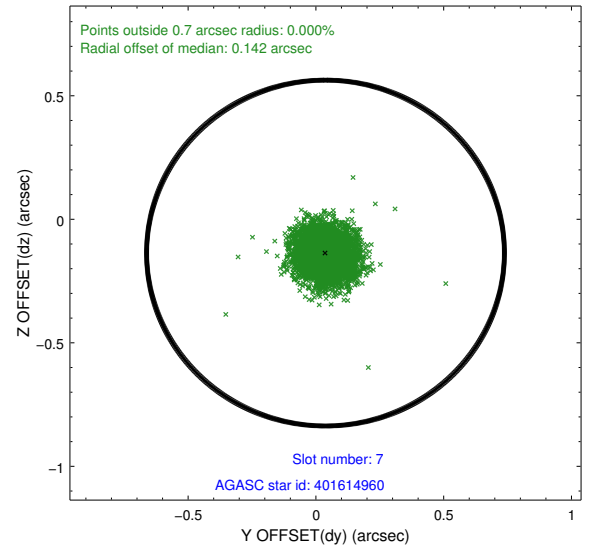
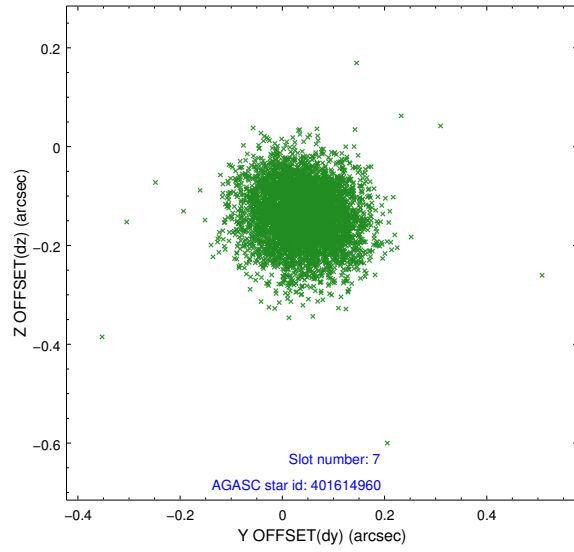
2.4.3 Slot 5



2.4.4 Slot 6

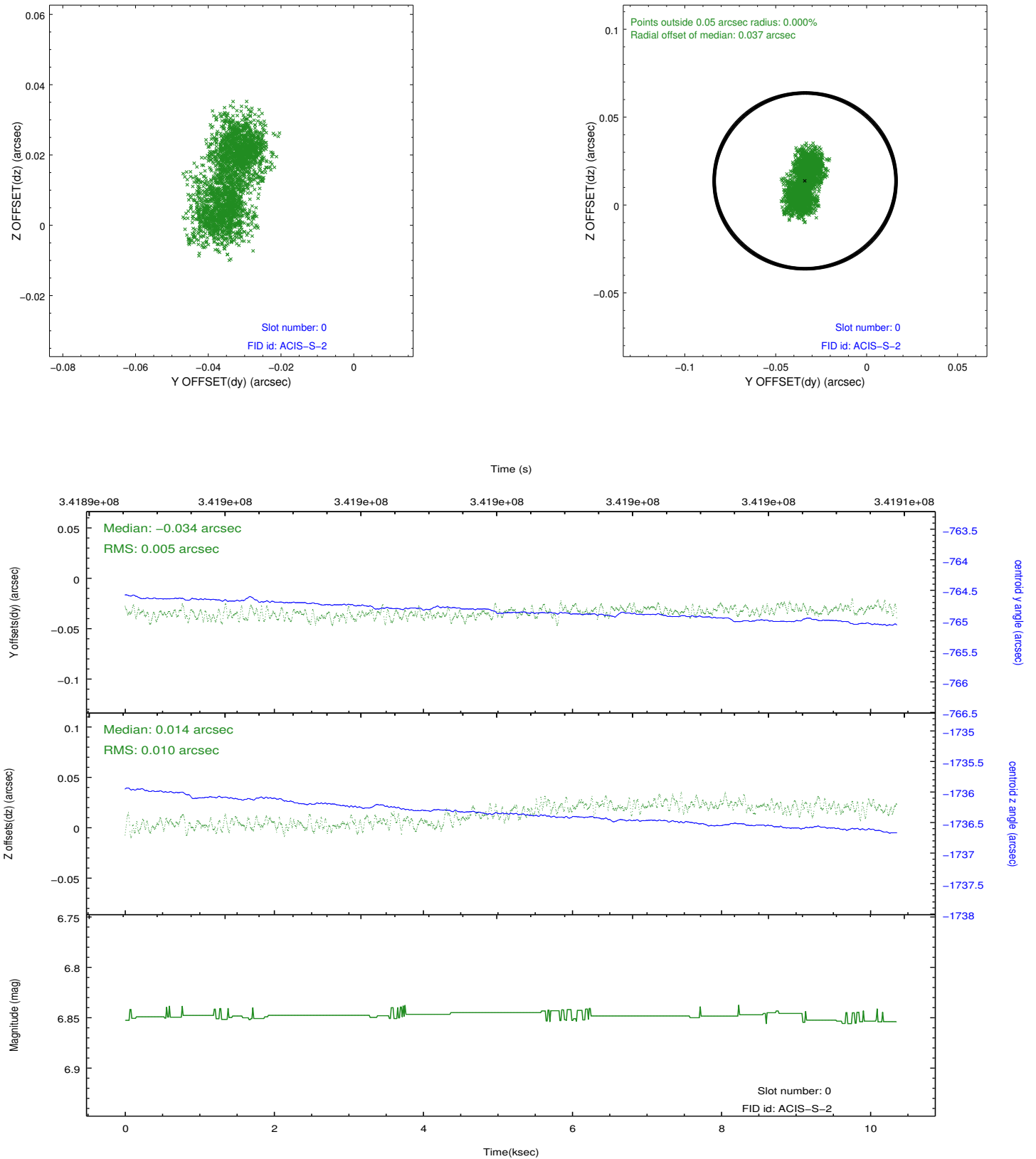


2.4.5 Slot 7

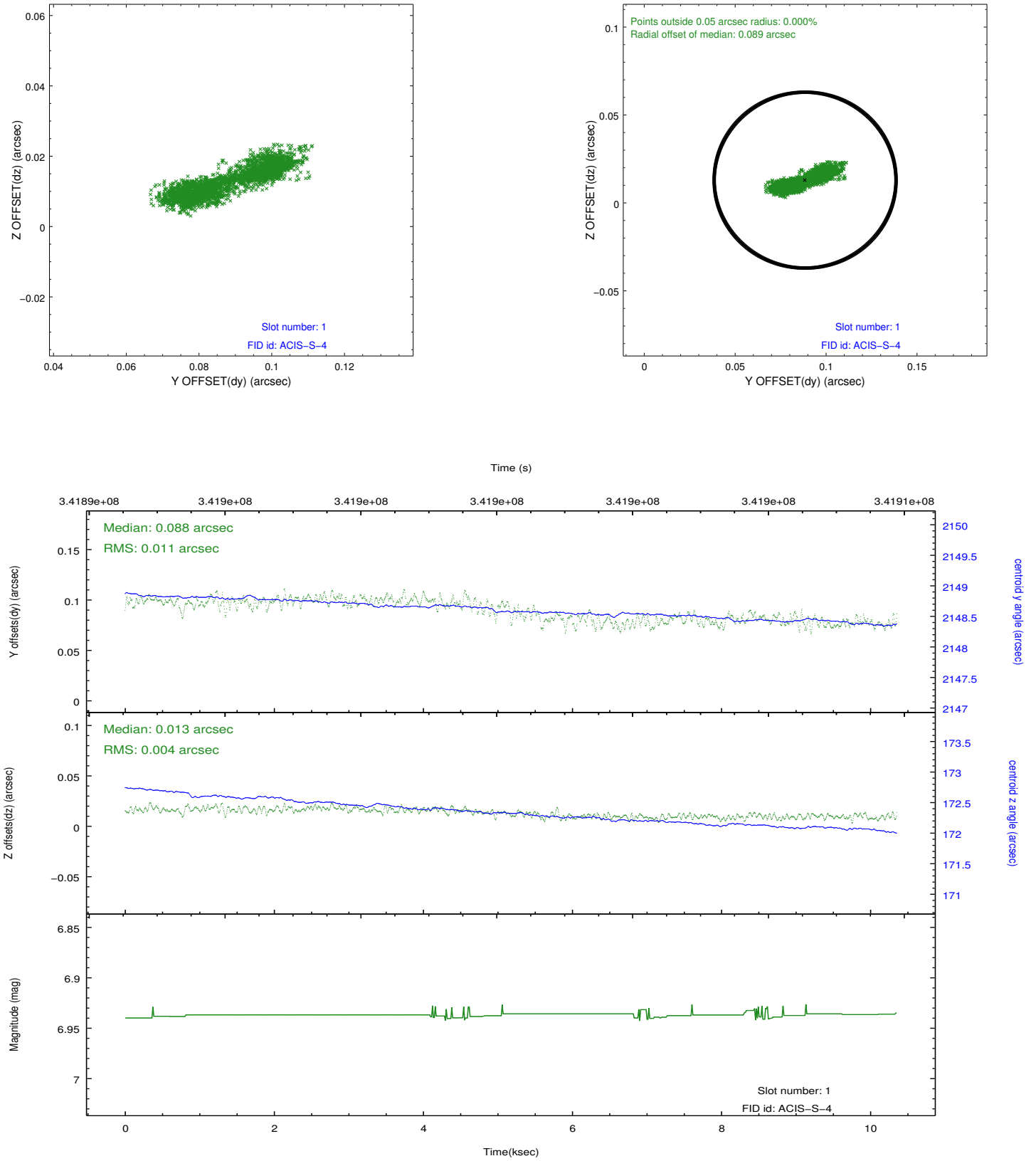


2.5 FID Slots

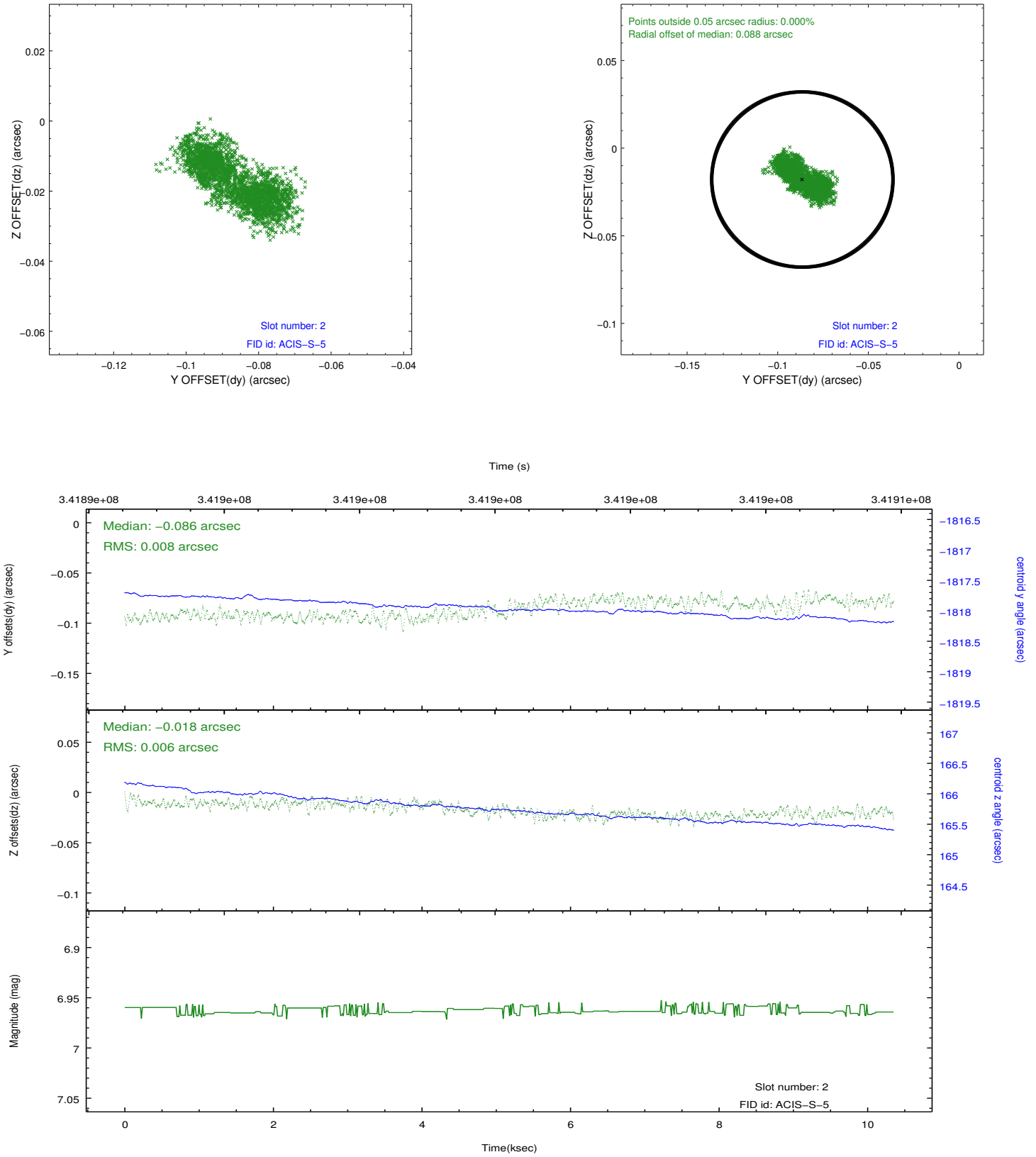
2.5.1 Slot 0



2.5.2 Slot 1



2.5.3 Slot 2



A Summary

A.1 Status

V&V Scientist	Jen Lauer
V&V Date (YYYY-MM-DD)	2012.05.31
V&V Edition	1
V&V Disposition and Status	OK
V&V Charge Time	10.1308

A.2 Comments

Joint proposal with HST and Spitzer.