

V&V Reference Report

L2 ASCDS Version : 8.4.4

Observation 9201 - L2 Version 2
Chandra X-Ray Center

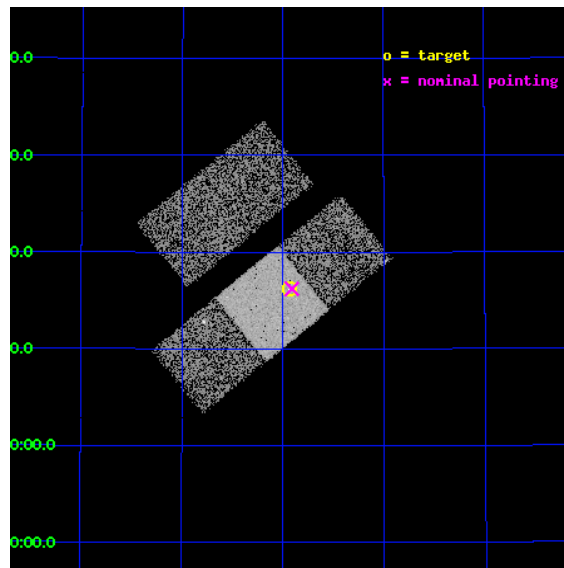
L2 Processing Date : May 12 2012

Contents

1	Front	2
2	OBI	3
2.1	OBI	3
2.1.1	Images	3
2.1.2	Bias	3
2.1.3	Parameters	4
2.1.4	Events	4
2.2	Compared Parameters	5
2.3	Aspect	6
2.4	Star Slots	9
2.4.1	Slot 3	9
2.4.2	Slot 4	10
2.4.3	Slot 5	11
2.4.4	Slot 6	12
2.4.5	Slot 7	13
2.5	FID Slots	14
2.5.1	Slot 0	14
2.5.2	Slot 1	15
2.5.3	Slot 2	16
A	Summary	17
A.1	Status	17
A.2	Comments	17

1 Front

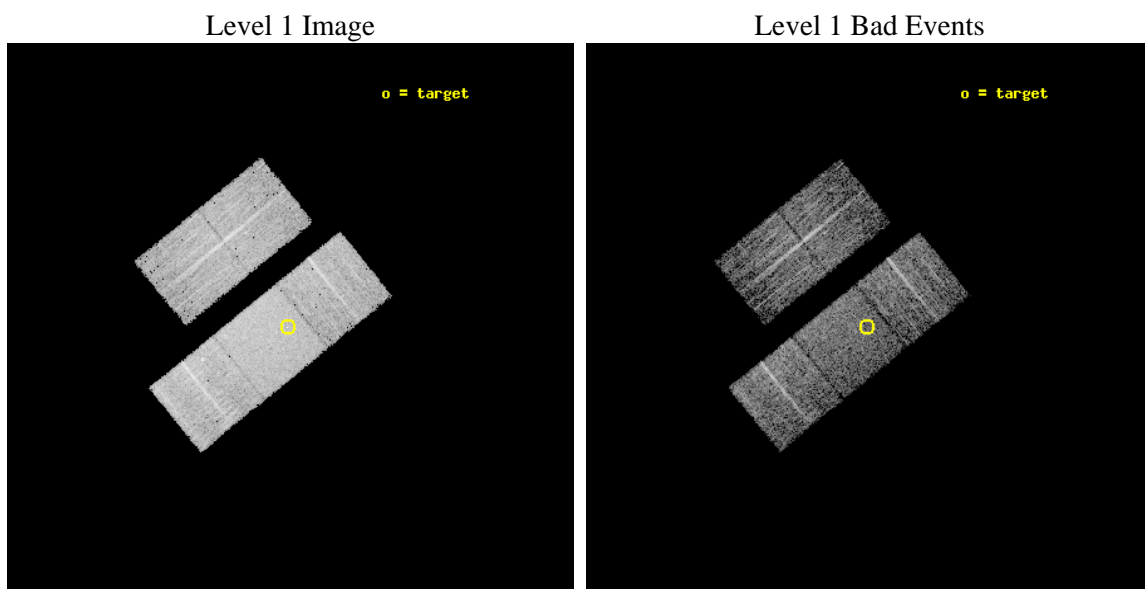
seq_num	701643	Sequence number
obs_id	9201	Observation id
title	Lower Luminosity AGNs at Cosmologically Interesting Redshifts: SEDs and Accretion Rates of $z \sim 0.36$ Seyferts	Proposal title
observer	Dr. Sarah Gallagher	Principal investigator
object	S28	Source name
dtcycle	0	
cycle	P	events from which exps? Prim/Second/Both
ra_targ	242.984583	Observer's specified target RA [deg]
dec_targ	45.269722	Observer's specified target Dec [deg]
ra_nom	242.97785355647	Nominal RA [deg]
dec_nom	45.270317097038	Nominal Dec [deg]
roll_nom	140.93346061332	Nominal Roll [deg]
revision	2	Processing version of data
ontime	3833.2966778278	Sum of GTIs [s]
livetime	3783.2118347001	Livetime [s]
ontime2	3833.1325178146	Sum of GTIs [s]
ontime3	3833.2145978212	Sum of GTIs [s]
ontime6	3833.2556378245	Sum of GTIs [s]
ontime7	3833.2966778278	Sum of GTIs [s]
ontime8	3833.1735578179	Sum of GTIs [s]
l2events	37574	Number of level 2 events



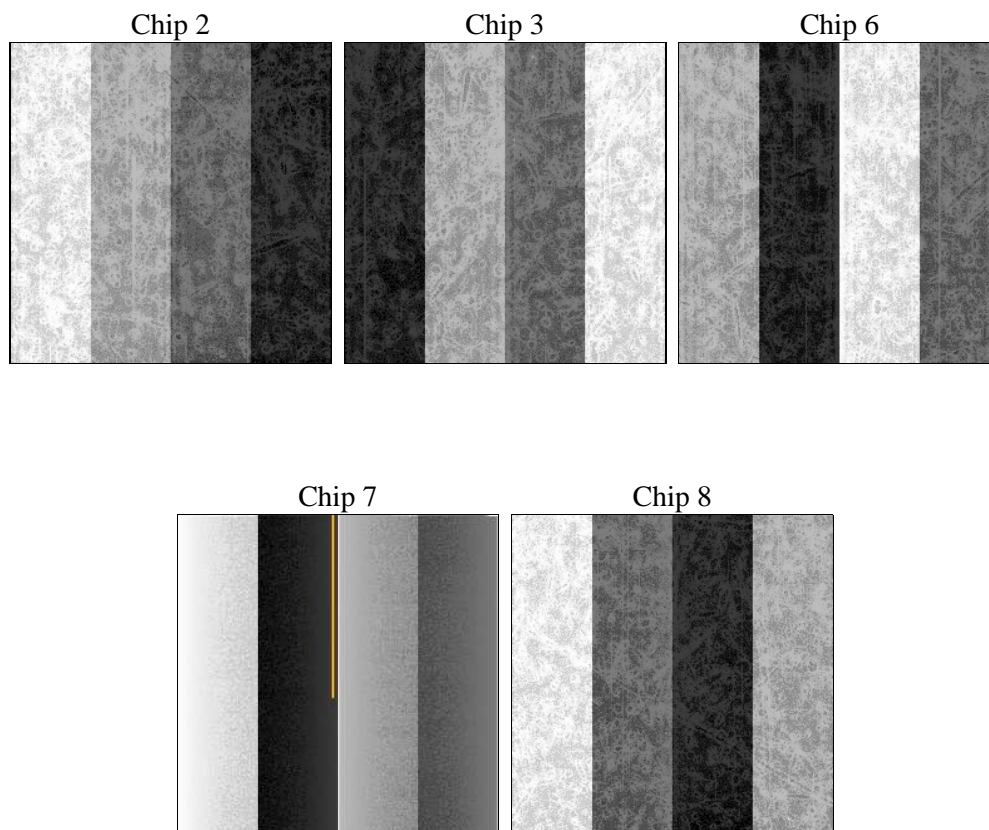
2 OBI

2.1 OBI

2.1.1 Images



2.1.2 Bias



2.1.3 Parameters

obi_num	0	Obi number	sched_exp_time	3800.000000	[s] Scheduled observation exposure time
ascdsver	8.4.4	Processing system revision	ontime	3833.2966778278	Sum of GTIs [s]
caldsver	4.4.9	 	ontime2	3833.1325178146	Sum of GTIs [s]
date	2012-05-13T01:03:36	Date and time of file creation	ontime3	3833.2145978212	Sum of GTIs [s]
revision	2	Processing version of data	ontime6	3833.2556378245	Sum of GTIs [s]
			ontime7	3833.2966778278	Sum of GTIs [s]
			ontime8	3833.1735578179	Sum of GTIs [s]
			l1events	208753	Number of level 1 events

2.1.4 Events

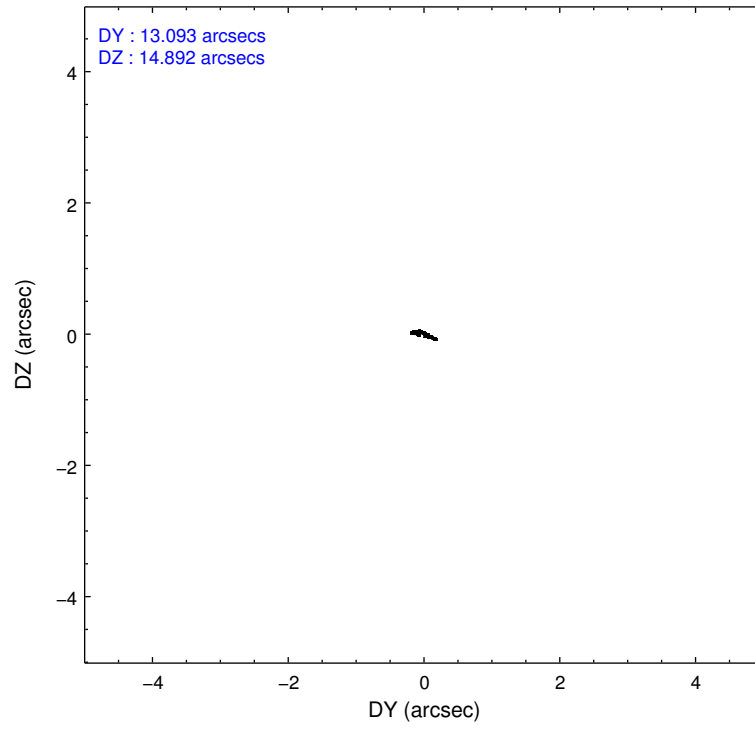
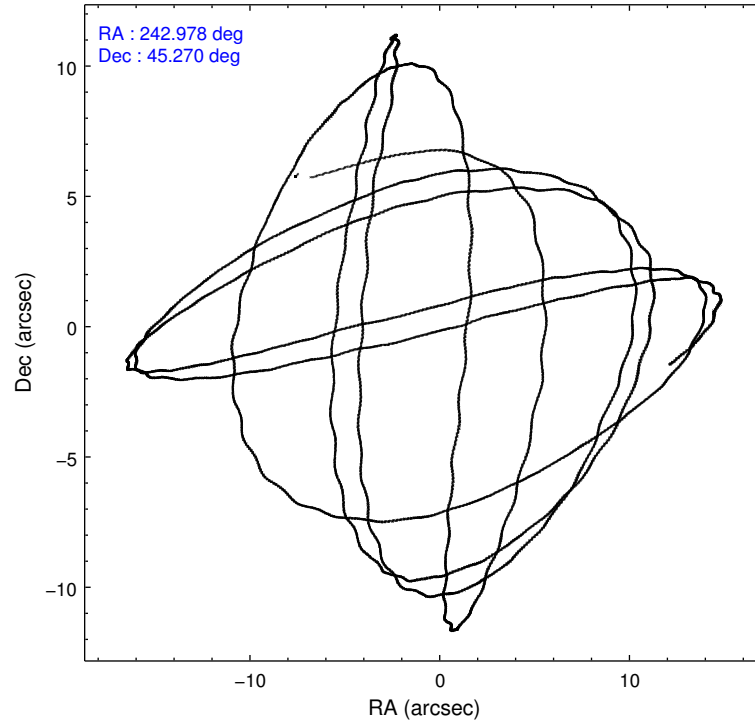
	ccd 2	ccd 3	ccd 6	ccd 7	ccd 8
level 1 events	35280	35947	37921	52185	47420
rejected events	30911	31505	33286	30504	36244
rejected %	87%	87%	87%	58%	76%

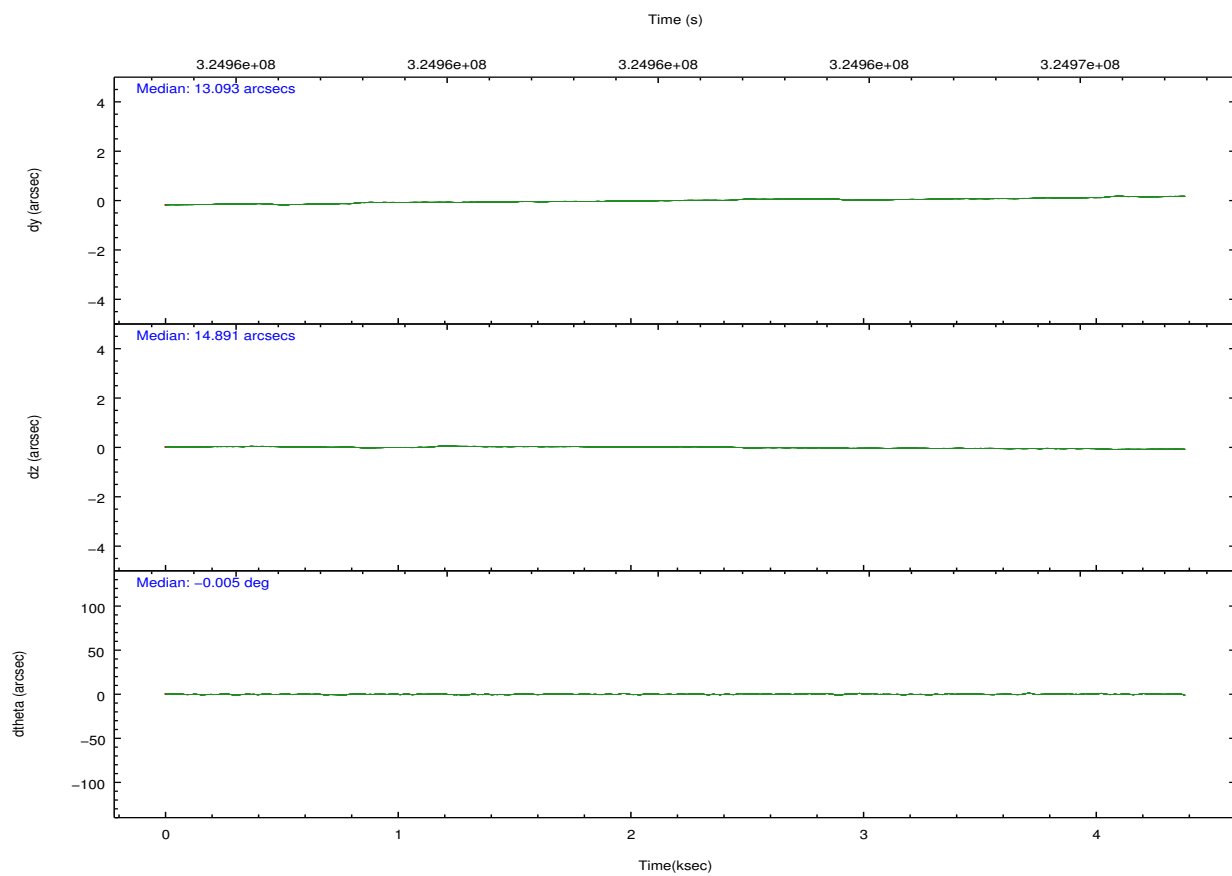
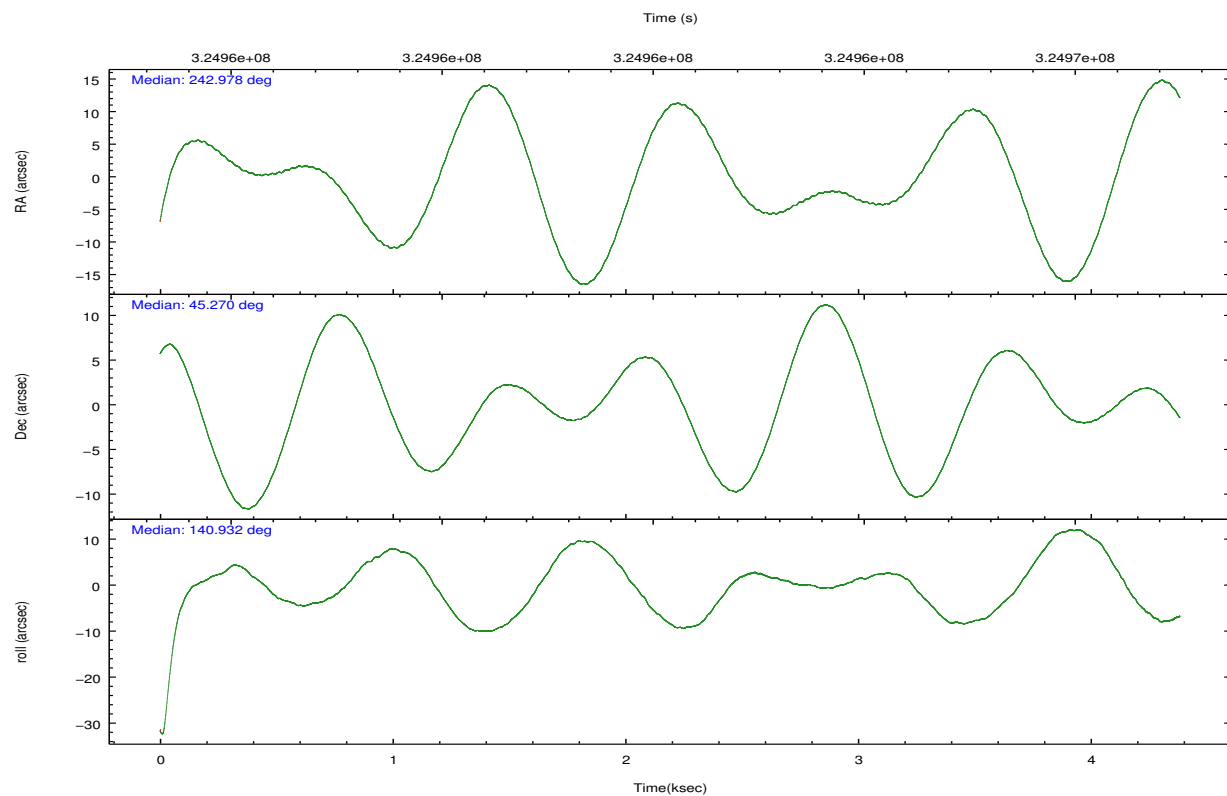
	ccd 2	ccd 3	ccd 6	ccd 7	ccd 8
grade 0 events	1996	1878	1859	1874	3675
	5%	5%	4%	3%	7%
grade 1 events	23	22	24	59	35
	0%	0%	0%	0%	0%
grade 2 events	879	886	959	4405	2464
	2%	2%	2%	8%	5%
grade 3 events	395	442	431	1919	1201
	1%	1%	1%	3%	2%
grade 4 events	398	444	439	1787	1028
	1%	1%	1%	3%	2%
grade 5 events	1453	1728	1775	4981	2322
	4%	4%	4%	9%	4%
grade 6 events	706	802	955	11732	2818
	2%	2%	2%	22%	5%
grade 7 events	29430	29745	31479	25428	33877
	83%	82%	83%	48%	71%

2.2 Compared Parameters

Parameter	Planned	Actual	Parameter	Planned	Actual
Instrument	ACIS	ACIS	Obspar format version number	7	7
Detector	ACIS-23678	ACIS-23678	Obspar file type	PREDICTED	ACTUAL
Grating	NONE	NONE	Obspar update status	NONE	UPDATED
Data mode	FAINT	FAINT	CCD I0 on	N	N
Observation mode	POINTING	POINTING	CCD I1 on	N	N
[deg] Pointing RA	243.016191	242.9778535564701	CCD I2 on	O1	Y
[deg] Pointing Dec	45.266395	45.27031709703826	CCD I3 on	Y	Y
[deg] Pointing Roll	140.749715	140.9334606133162	CCD S0 on	N	N
[mm] SIM focus pos	-0.684267	-0.6828225247311905	CCD S1 on	N	N
[mm] SIM defocus	0	0.001444936568705701	CCD S2 on	Y	Y
[mm] SIM translation stage pos	-190.132523	-190.1400660498719	CCD S3 on	Y	Y
[mm] SIM translation stage offset	0	0.00754346686406393	CCD S4 on	Y	Y
[s] Observation start time (MET)	324962470.184000	324961198.49829	CCD S5 on	N	N
Observation start date	2008-04-19T03:20:05	2008-04-19T02:59:58	Number of optional ACIS chips dropped	0	0
[s] Observation end time (MET)	324966270.184000	324967051.24858	On-chip summing requested	N	N
Observation end date	2008-04-19T04:23:25	2008-04-19T04:37:31	Subarray requested	NONE	NONE
Read mode	TIMED	TIMED	Alternating exposures requested	N	N
			[s] Primary exposure time	0.000000	3.1

2.3 Aspect



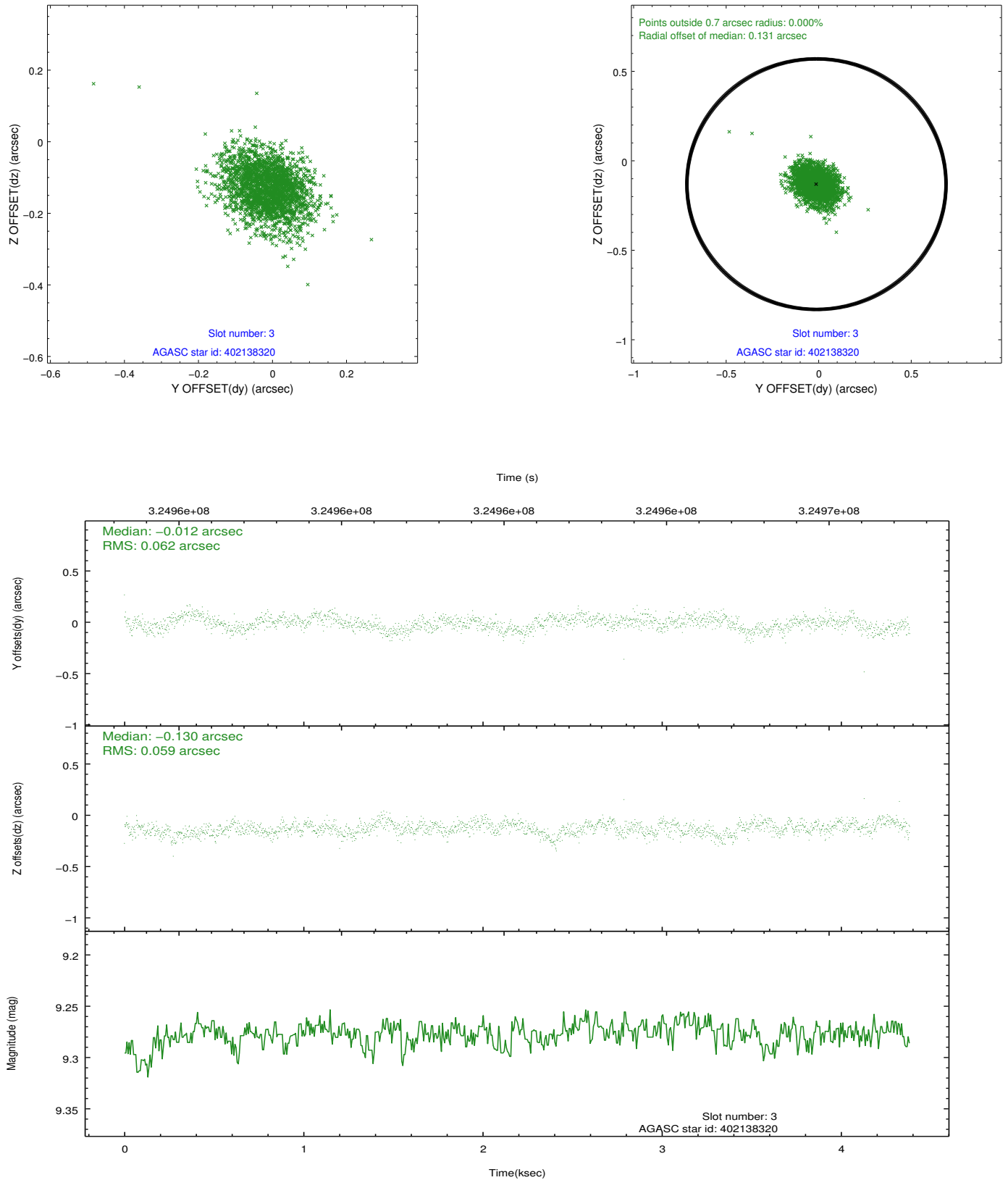


Slot Statistics

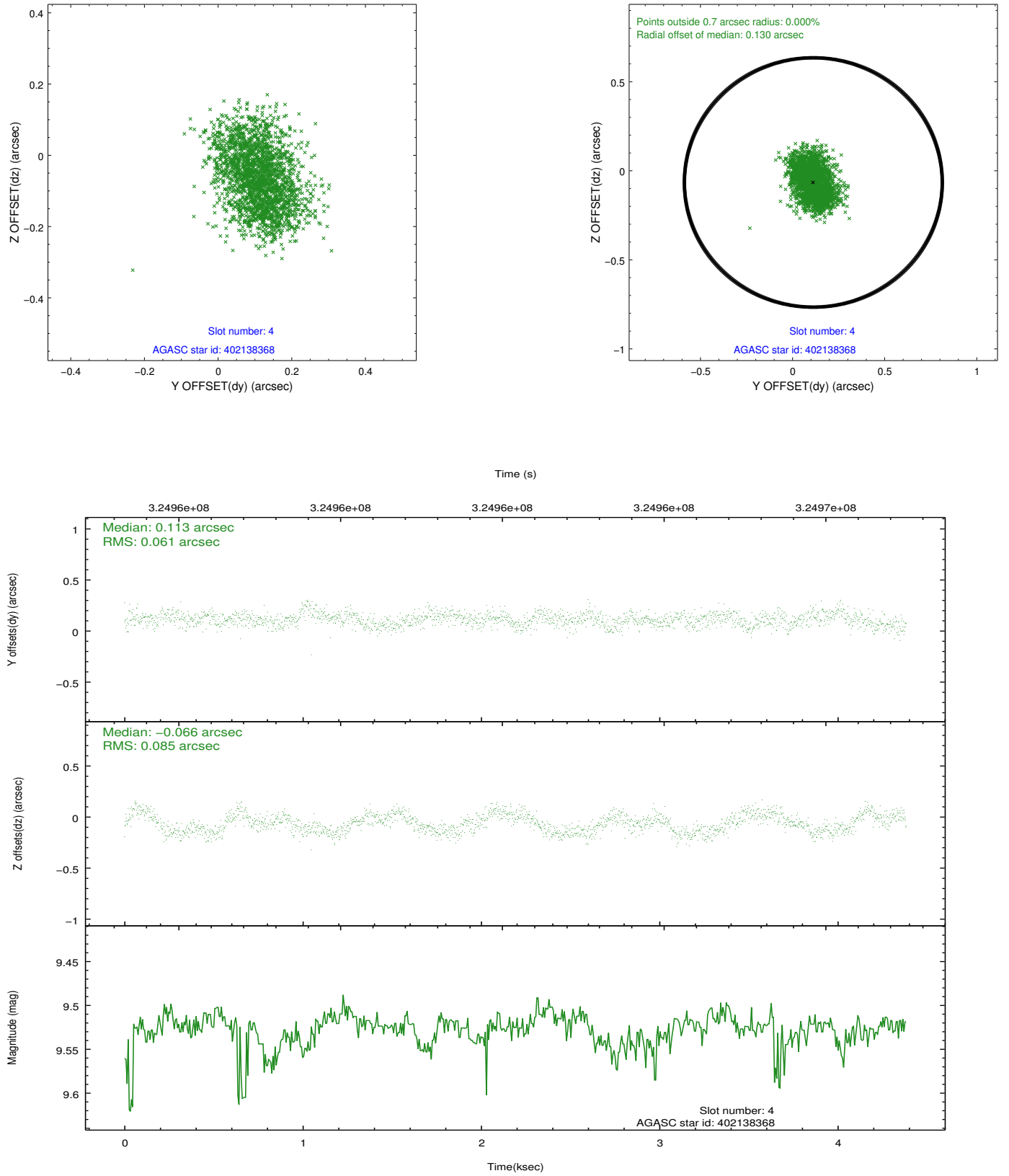
slot	status	id	mag	n_pts	med_dy	med_dz	dr1	dr2	ra	dec	mean_y	mean_z
0	FID	ACIS-S-2	6.85	1070	-0.043	0.008	0.007	0.012	0.000000	0.000000	-766.02	-1736.26
1	FID	ACIS-S-4	6.93	1070	0.108	0.018	0.007	0.016	0.000000	0.000000	2146.73	170.81
2	FID	ACIS-S-5	6.97	1069	-0.097	-0.018	0.008	0.014	0.000000	0.000000	-1817.14	165.99
3	GUIDE	402138320	9.28	2136	-0.012	-0.130	0.088	0.145	243.394453	44.959162	-1443.97	245.44
4	GUIDE	402138368	9.53	2123	0.113	-0.066	0.113	0.176	243.434527	44.777279	-1939.95	685.65
5	GUIDE	457579792	9.68	2136	-0.109	-0.001	0.127	0.222	242.994118	45.442314	442.98	-453.85
6	GUIDE	457580824	8.92	2139	0.058	0.068	0.074	0.122	242.592765	45.720980	1862.23	-595.74
7	GUIDE	457716784	10.05	2133	-0.044	0.114	0.213	0.327	243.989281	45.182068	-2093.05	-1338.37

2.4 Star Slots

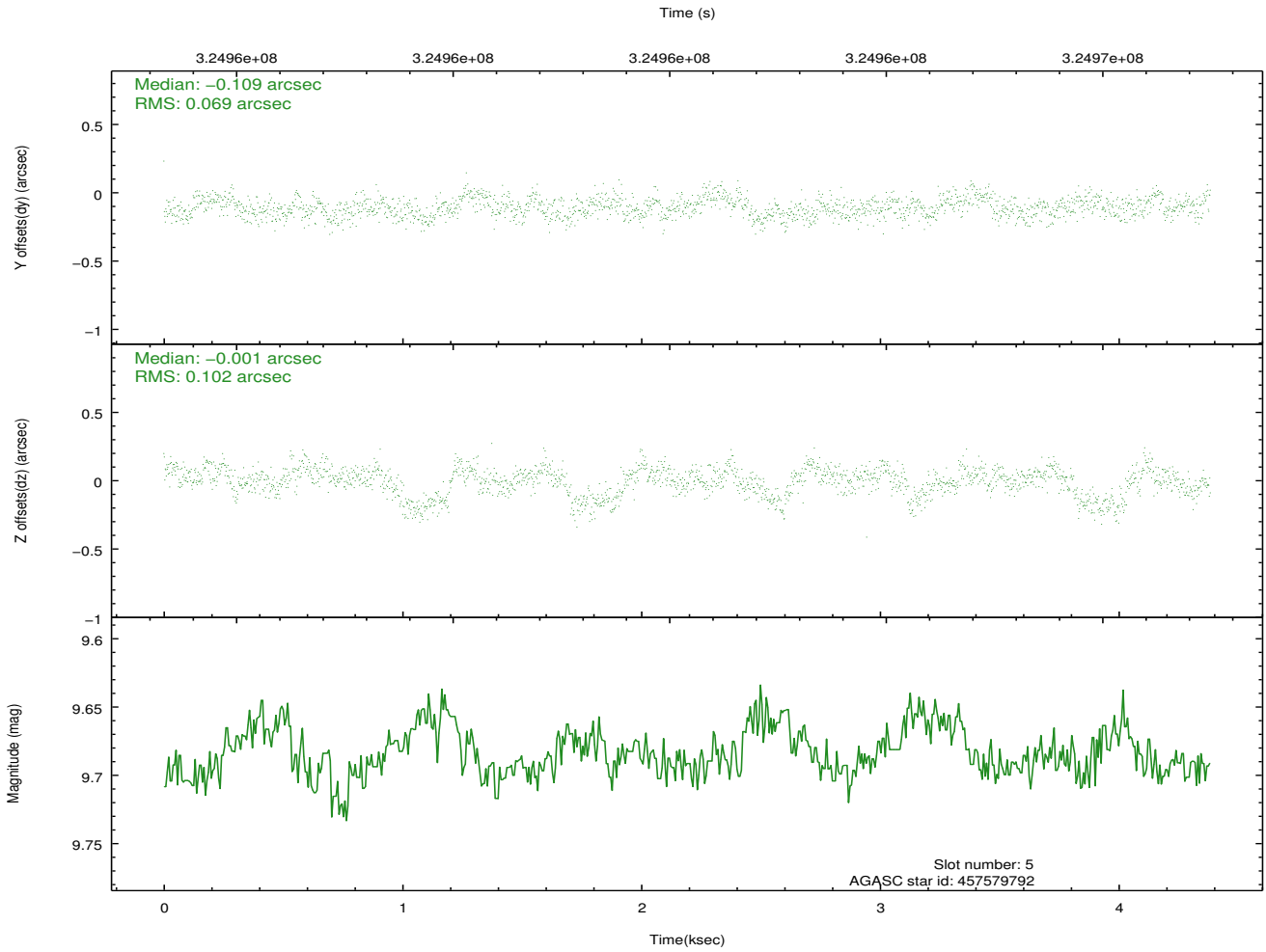
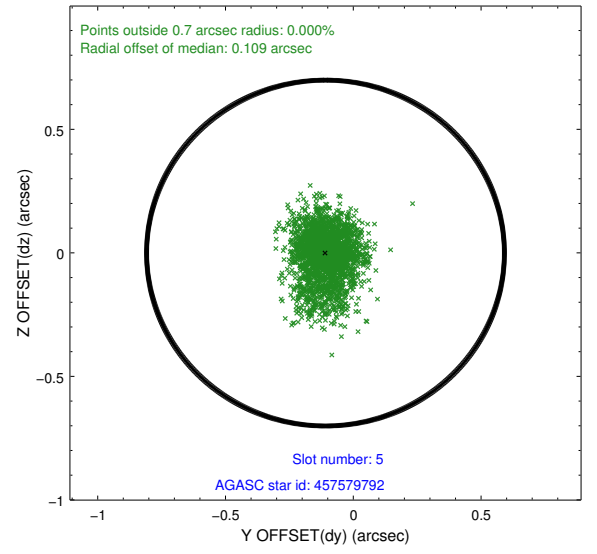
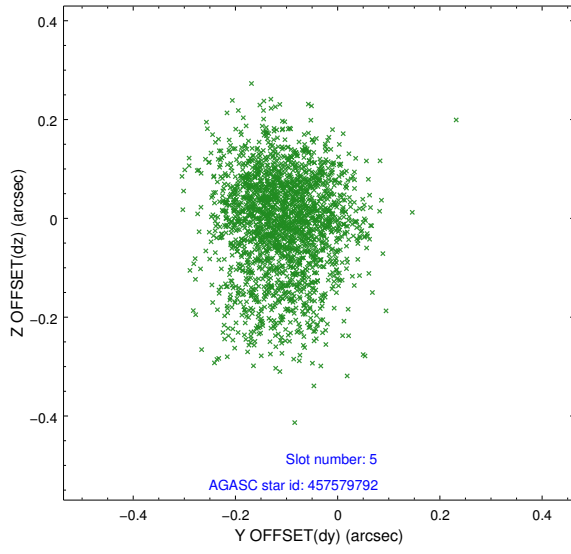
2.4.1 Slot 3



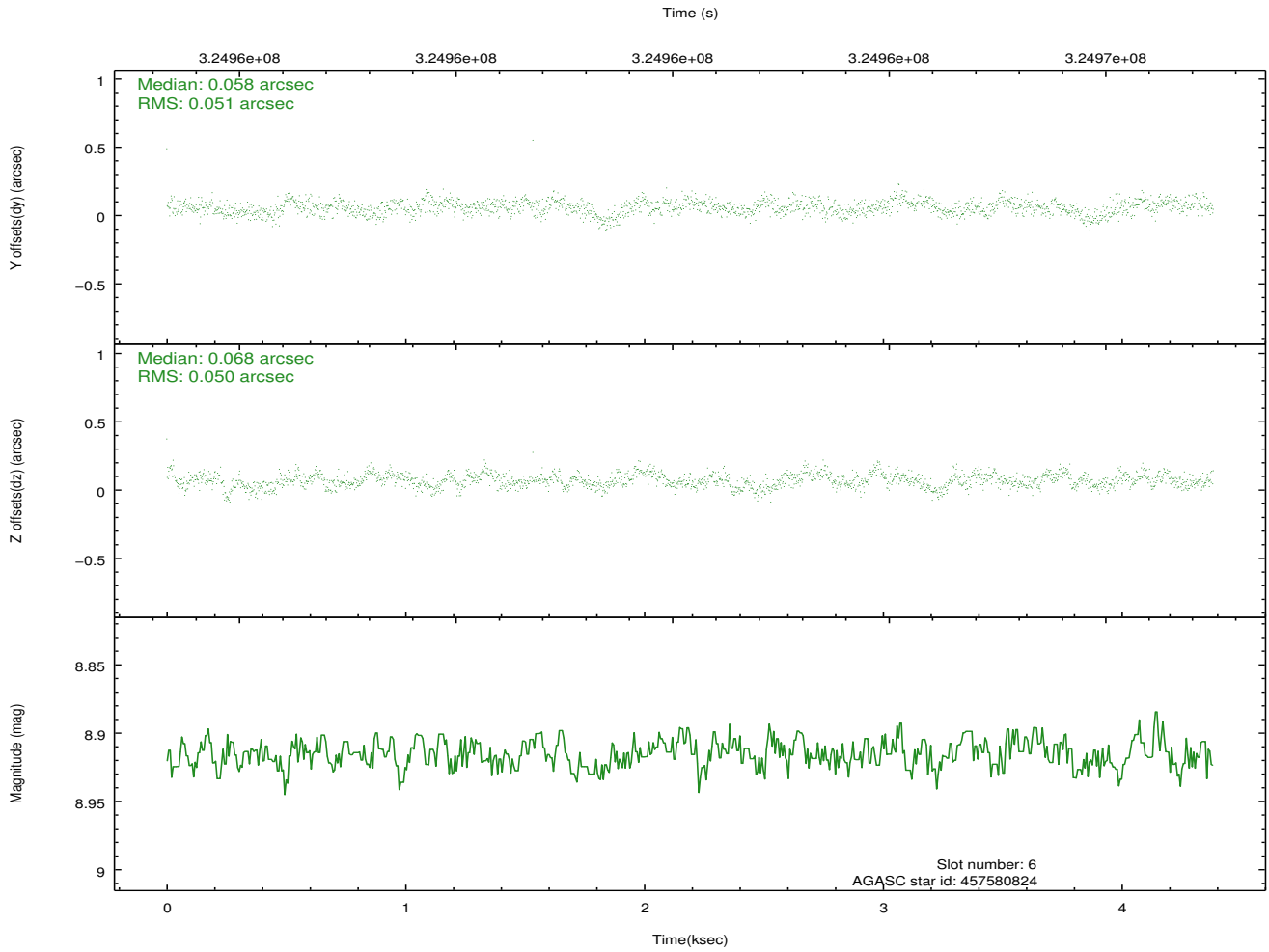
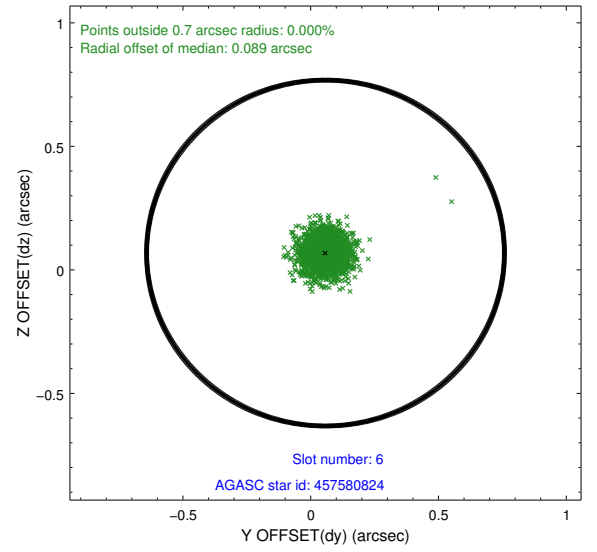
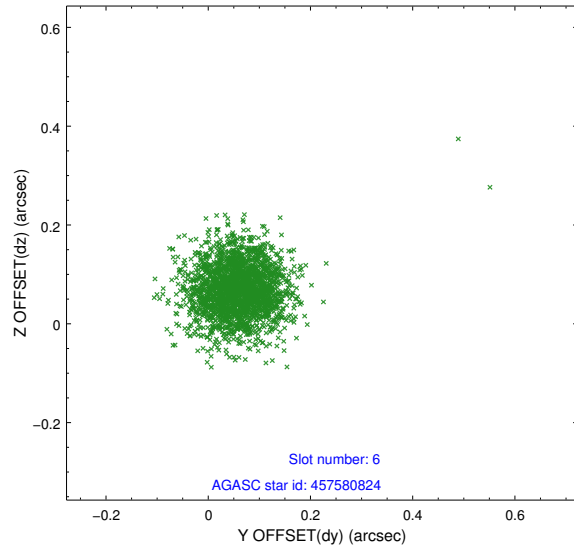
2.4.2 Slot 4



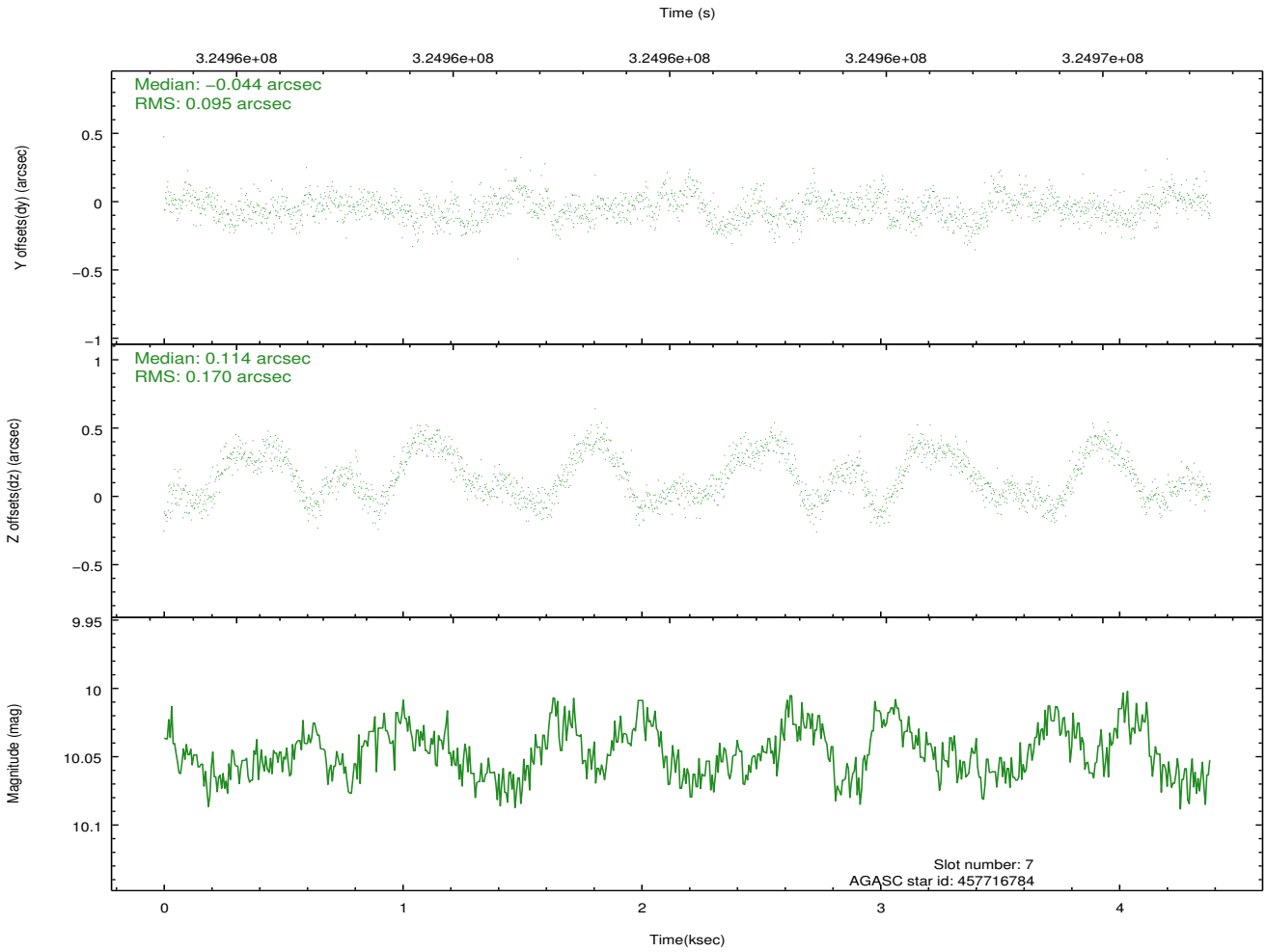
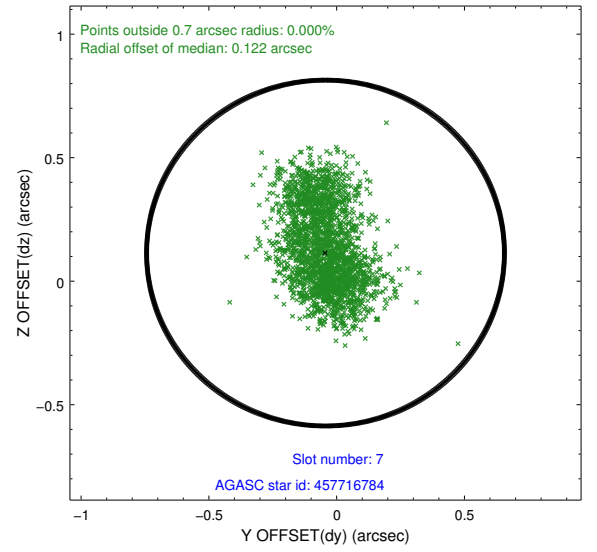
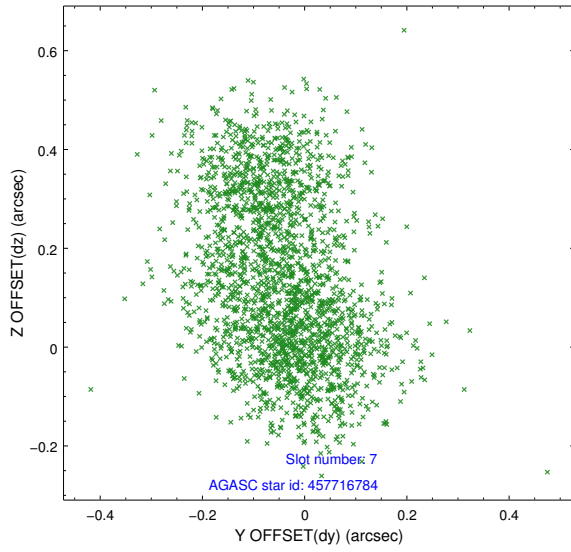
2.4.3 Slot 5



2.4.4 Slot 6

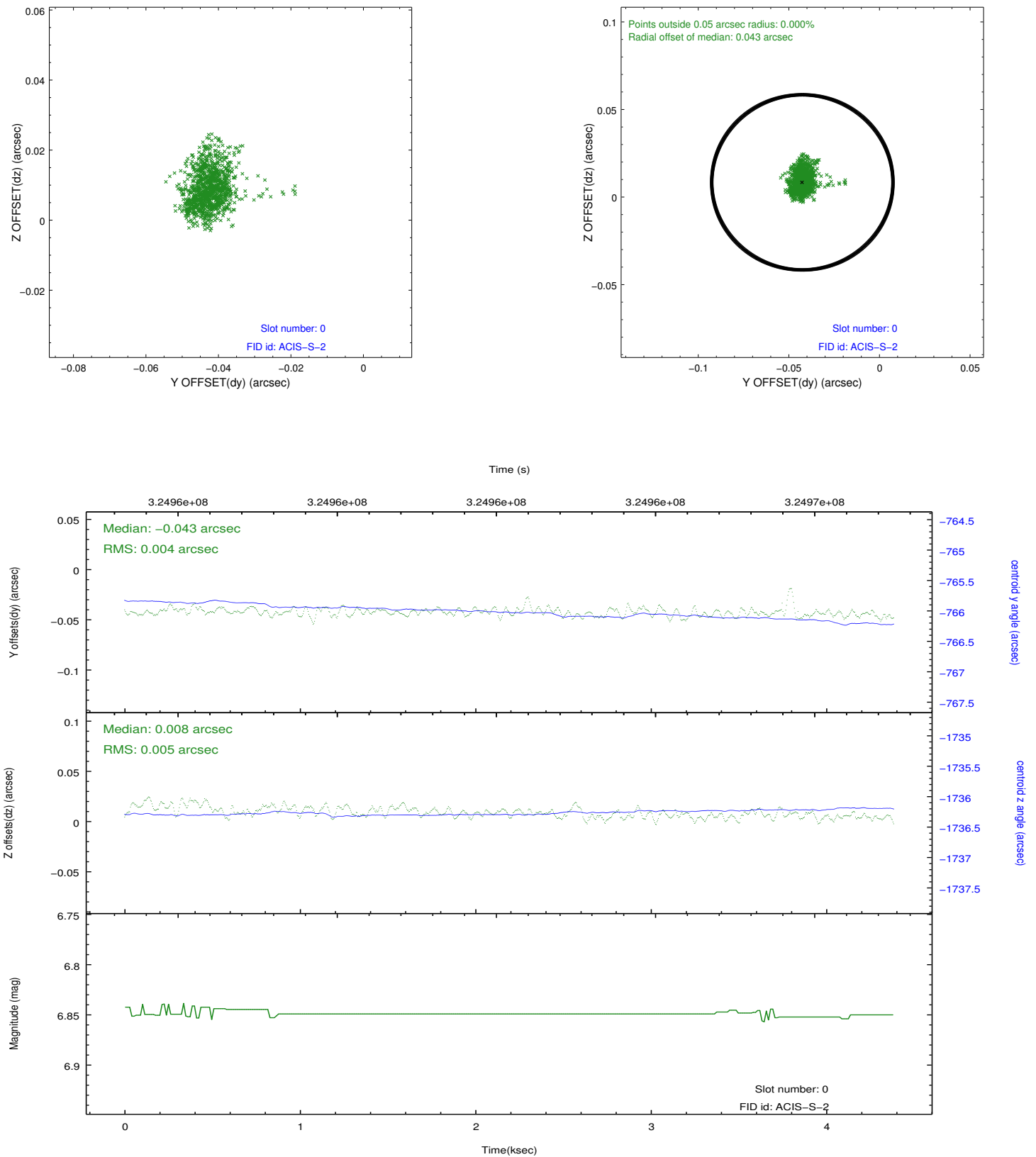


2.4.5 Slot 7

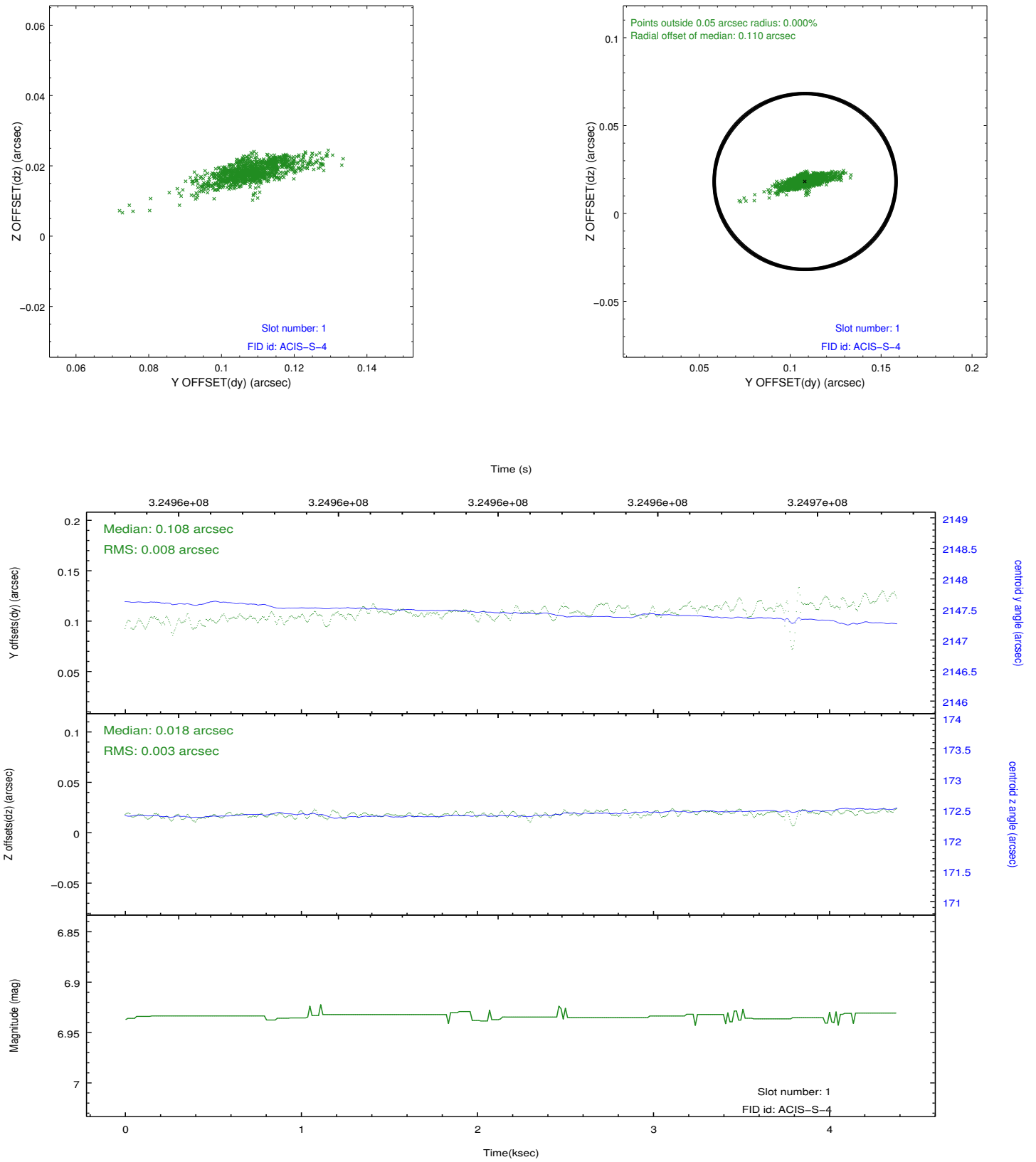


2.5 FID Slots

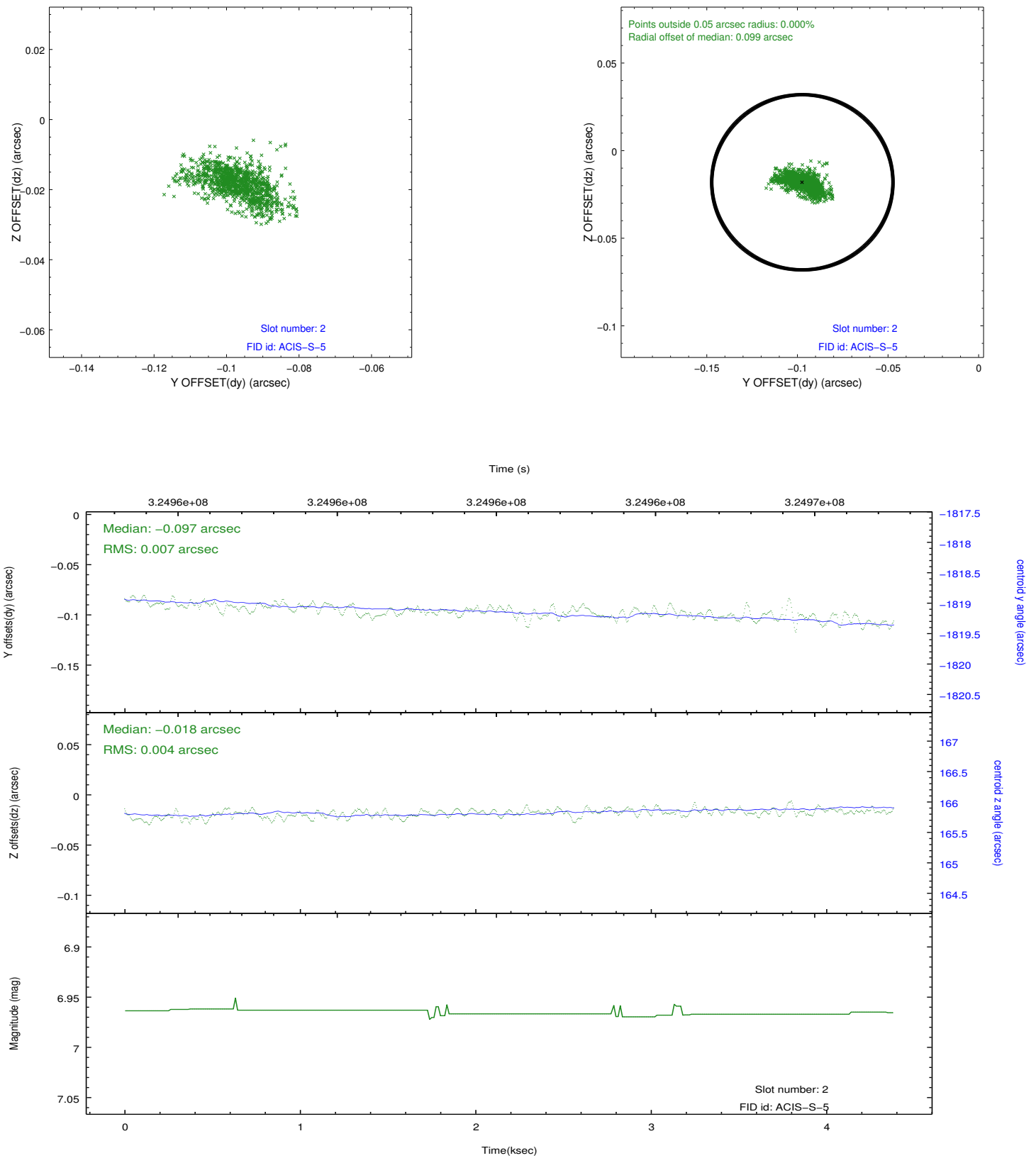
2.5.1 Slot 0



2.5.2 Slot 1



2.5.3 Slot 2



A Summary

A.1 Status

V&V Scientist	Jen Lauer
V&V Date (YYYY-MM-DD)	2012.05.15
V&V Edition	1
V&V Disposition and Status	OK
V&V Charge Time	3.83470002

A.2 Comments

Coordinated with HST and Spitzer.