

V&V Reference Report

L2 ASCDS Version : 8.4.4

Observation 9152 - L2 Version 2
Chandra X-Ray Center

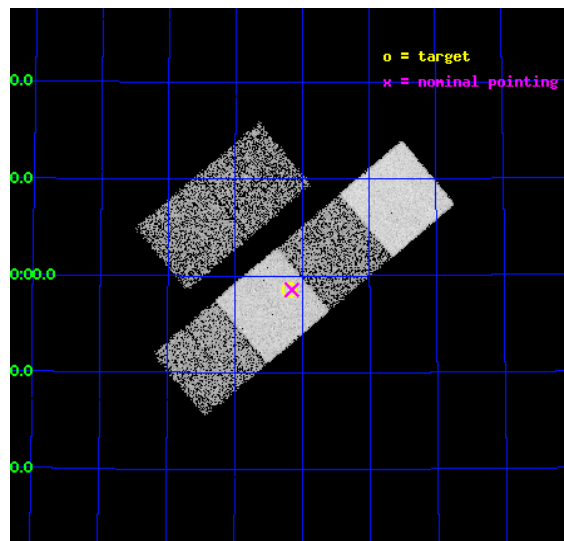
L2 Processing Date : May 10 2012

Contents

1	Front	2
2	OBI	3
2.1	OBI	3
2.1.1	Images	3
2.1.2	Bias	3
2.1.3	Parameters	4
2.1.4	Events	4
2.2	Compared Parameters	5
2.3	Aspect	6
2.4	Star Slots	9
2.4.1	Slot 3	9
2.4.2	Slot 4	10
2.4.3	Slot 5	11
2.4.4	Slot 6	12
2.4.5	Slot 7	13
2.5	FID Slots	14
2.5.1	Slot 0	14
2.5.2	Slot 1	15
2.5.3	Slot 2	16
A	Summary	17
A.1	Status	17
A.2	Comments	17

1 Front

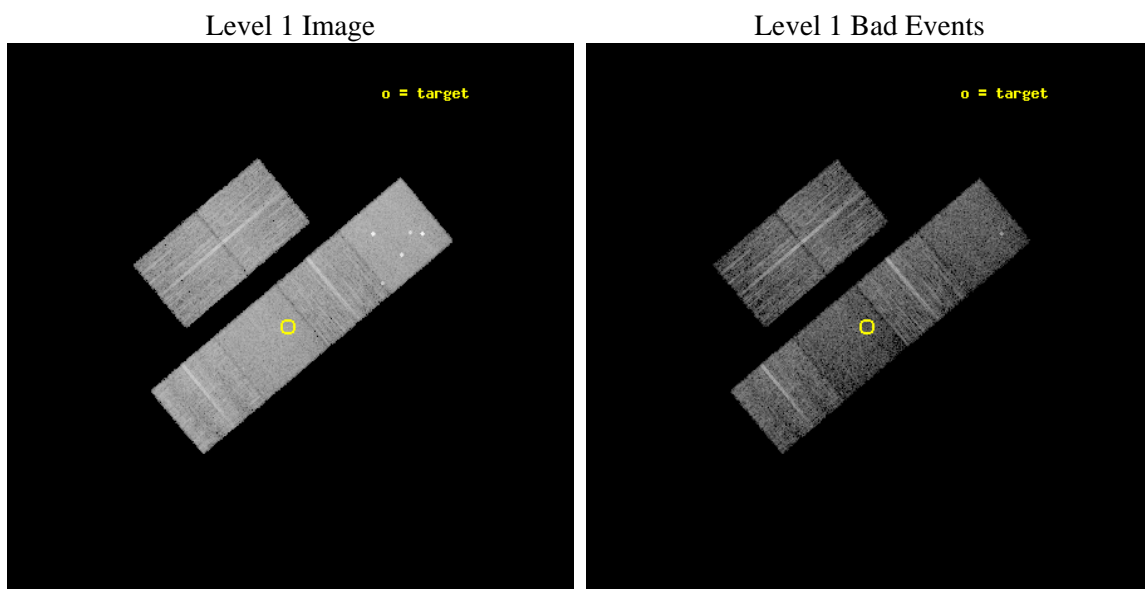
seq_num	701594	Sequence number
obs_id	9152	Observation id
title	Chandra ACIS Snapshots of the Brightest Radio-Loud Broad Absorption Line Quasars in the SDSS	Proposal title
observer	Professor Gordon Garmire	Principal investigator
object	SDSS J123411.73+615832.6	Source name
dtcycle	0	
cycle	P	events from which exps? Prim/Second/Both
ra_targ	188.54875	Observer's specified target RA [deg]
dec_targ	61.975694	Observer's specified target Dec [deg]
ra_nom	188.538540885	Nominal RA [deg]
dec_nom	61.976314976791	Nominal Dec [deg]
roll_nom	139.8189374966	Nominal Roll [deg]
revision	2	Processing version of data
ontime	6220.7999768853	Sum of GTIs [s]
livetime	6142.028461862	Livetime [s]
ontime2	6220.7999768853	Sum of GTIs [s]
ontime3	6220.7999768853	Sum of GTIs [s]
ontime5	6220.7999768853	Sum of GTIs [s]
ontime6	6217.5589565635	Sum of GTIs [s]
ontime7	6220.7999768853	Sum of GTIs [s]
ontime8	6220.7999768853	Sum of GTIs [s]
l2events	79996	Number of level 2 events



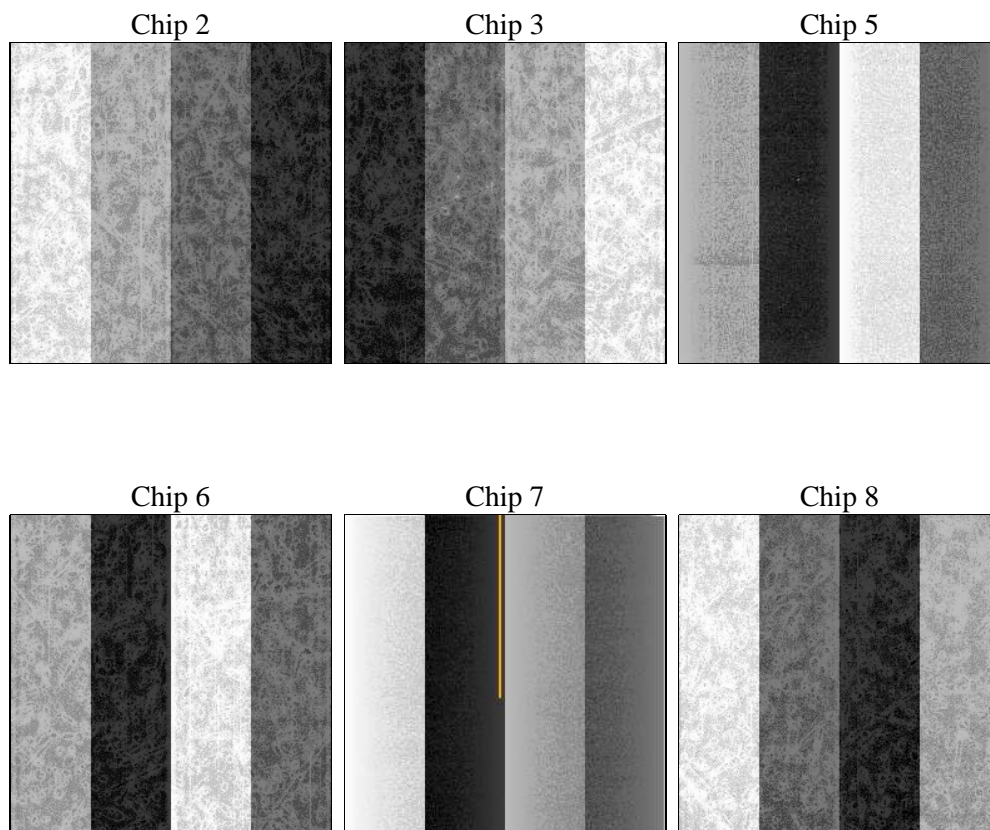
2 OBI

2.1 OBI

2.1.1 Images



2.1.2 Bias



2.1.3 Parameters

obi_num	1	Obi number	sched_exp_time	6037.377000	[s] Scheduled observation exposure time
ascdsver	8.4.4	Processing system revision	ontime	6220.7999768853	Sum of GTIs [s]
caldsver	4.4.9	 	ontime2	6220.7999768853	Sum of GTIs [s]
date	2012-05-10T08:12:04	Date and time of file creation	ontime3	6220.7999768853	Sum of GTIs [s]
revision	2	Processing version of data	ontime5	6220.7999768853	Sum of GTIs [s]
			ontime6	6217.5589565635	Sum of GTIs [s]
			ontime7	6220.7999768853	Sum of GTIs [s]
			ontime8	6220.7999768853	Sum of GTIs [s]
			l1events	365093	Number of level 1 events

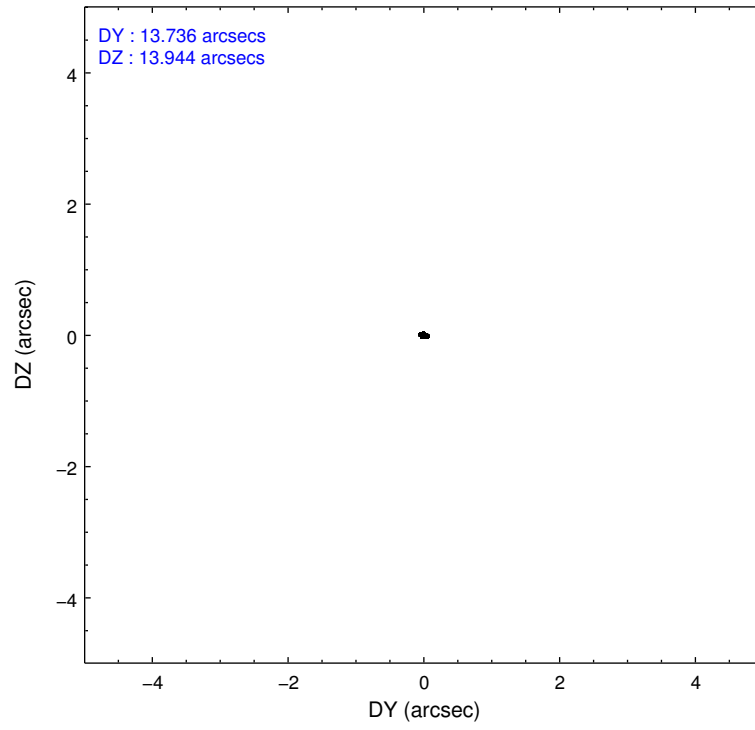
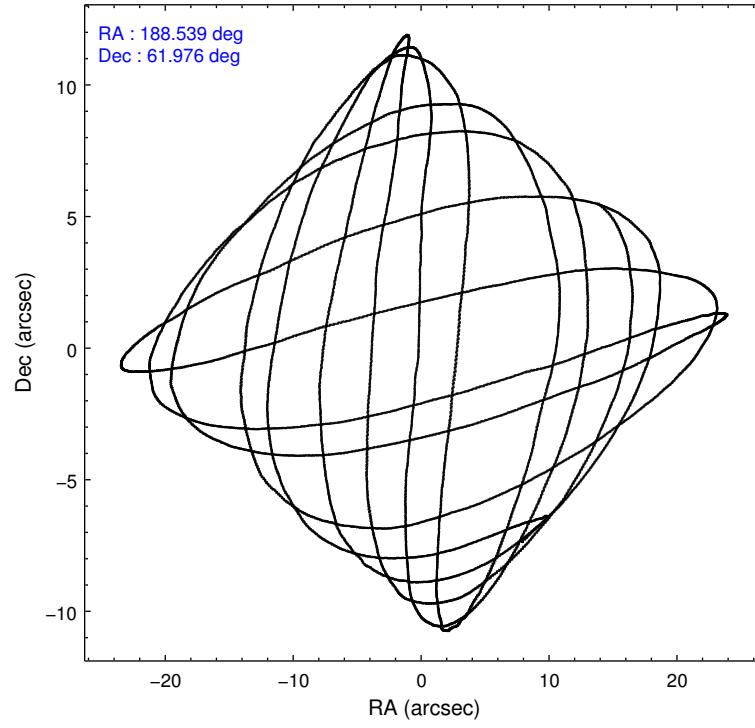
2.1.4 Events

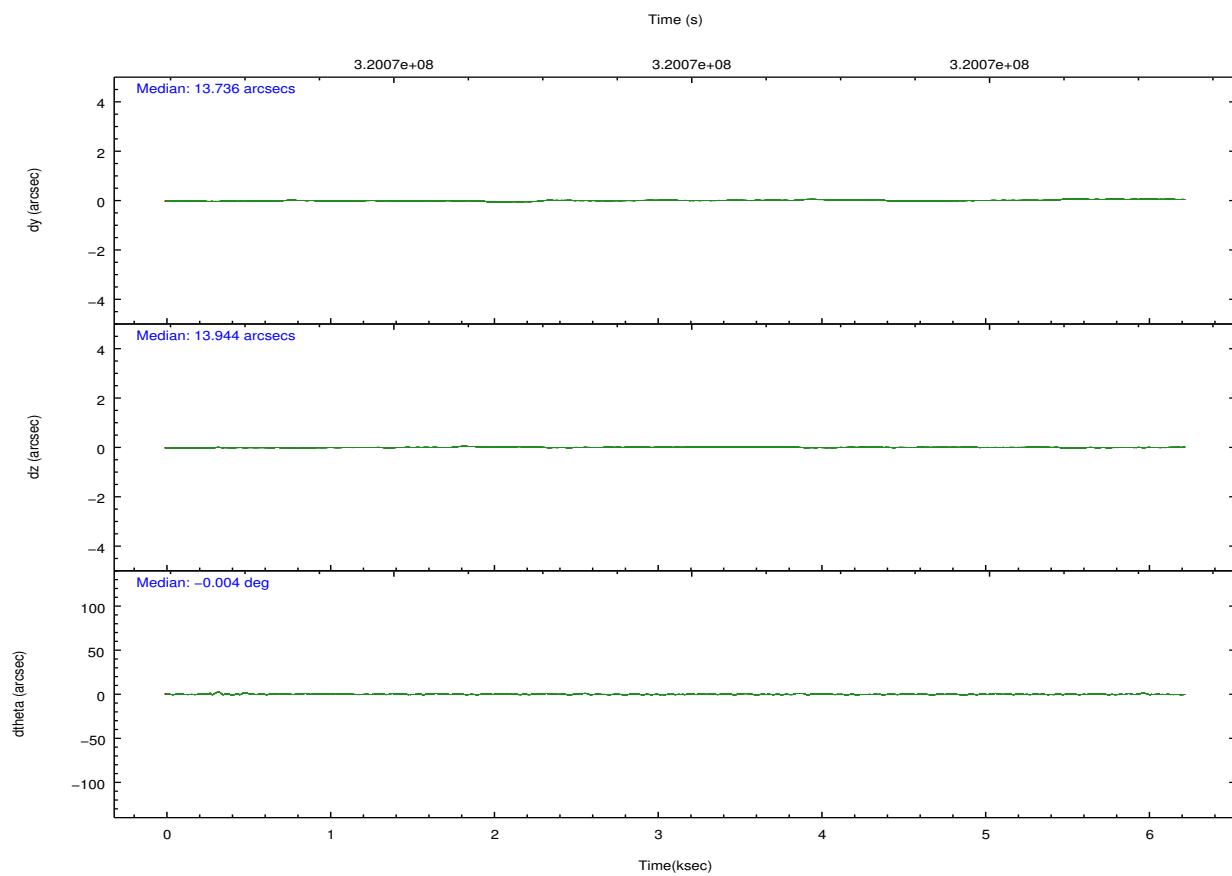
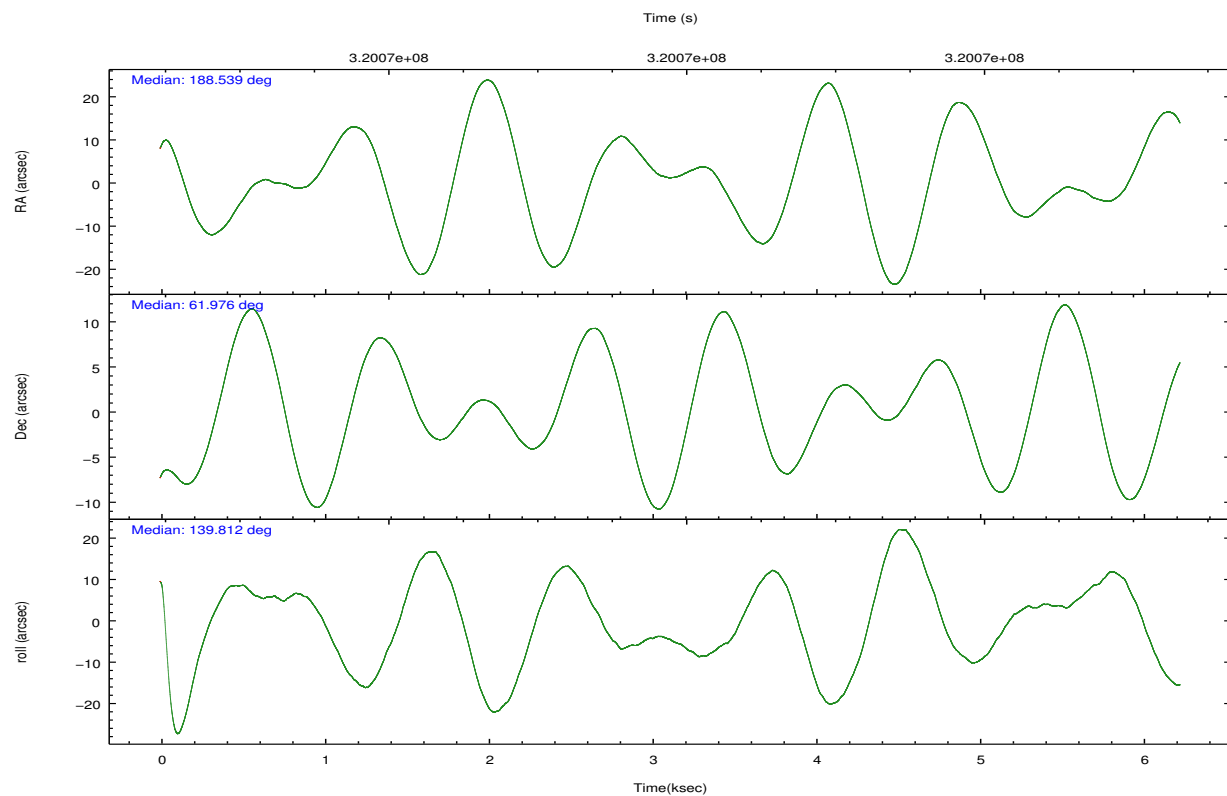
	ccd 2	ccd 3	ccd 5	ccd 6	ccd 7	ccd 8		ccd 2	ccd 3	ccd 5	ccd 6	ccd 7	ccd 8
level 1 events	57301	51084	77765	54562	60049	64332	grade 0 events	2169	2096	6796	2340	2622	5106
rejected events	52038	45885	37614	48750	32925	48917		3%	4%	8%	4%	4%	7%
rejected %	90%	89%	48%	89%	54%	76%	grade 1 events	35	35	448	32	66	48
								0%	0%	0%	0%	0%	0%
							grade 2 events	1254	1083	12003	1218	5539	3411
								2%	2%	15%	2%	9%	5%
							grade 3 events	560	570	1449	621	2532	1783
								0%	1%	1%	1%	4%	2%
							grade 4 events	525	578	1390	602	2490	1642
								0%	1%	1%	1%	4%	2%
							grade 5 events	1691	2036	5293	2141	6031	2917
								2%	3%	6%	3%	10%	4%
							grade 6 events	908	1033	19690	1218	14788	3969
								1%	2%	25%	2%	24%	6%
							grade 7 events	50159	43653	30696	46390	25981	45456
								87%	85%	39%	85%	43%	70%

2.2 Compared Parameters

Parameter	Planned	Actual	Parameter	Planned	Actual
Instrument	ACIS	ACIS	Obspar format version number	7	7
Detector	ACIS-235678	ACIS-235678	Obspar file type	PREDICTED	ACTUAL
Grating	NONE	NONE	Obspar update status	NONE	UPDATED
Data mode	VFAINT	VFAINT	CCD I0 on	N	N
Observation mode	POINTING	POINTING	CCD I1 on	N	N
[deg] Pointing RA	188.595948	188.5385408850039	CCD I2 on	O1	Y
[deg] Pointing Dec	61.971936	61.97631497679118	CCD I3 on	O2	Y
[deg] Pointing Roll	139.611525	139.8189374965983	CCD S0 on	N	N
[mm] SIM focus pos	-0.684267	-0.6828225247311905	CCD S1 on	O3	Y
[mm] SIM defocus	0	0.001444936568705701	CCD S2 on	Y	Y
[mm] SIM translation stage pos	-190.132523	-190.1425803651734	CCD S3 on	Y	Y
[mm] SIM translation stage offset	0	0.01005778216563158	CCD S4 on	Y	Y
[s] Observation start time (MET)	320066963.184000	320065793.1352	CCD S5 on	N	N
Observation start date	2008-02-22T11:28:18	2008-02-22T11:09:53	Number of optional ACIS chips dropped	0	0
[s] Observation end time (MET)	320073001.184000	320073226.43556	On-chip summing requested	N	N
Observation end date	2008-02-22T13:08:56	2008-02-22T13:13:46	Subarray requested	NONE	NONE
Read mode	TIMED	TIMED	Alternating exposures requested	N	N
			[s] Primary exposure time	0.000000	3.2

2.3 Aspect



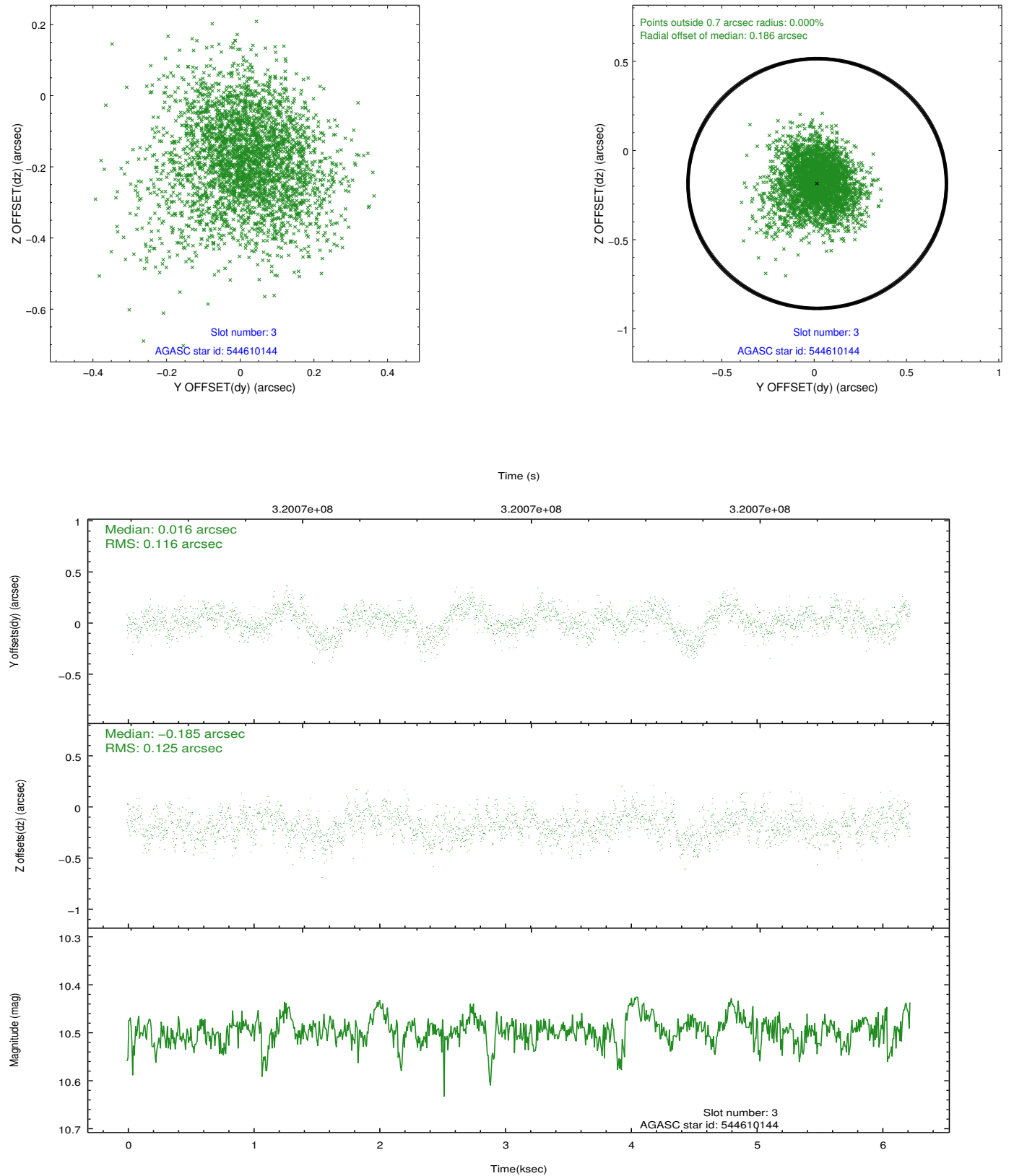


Slot Statistics

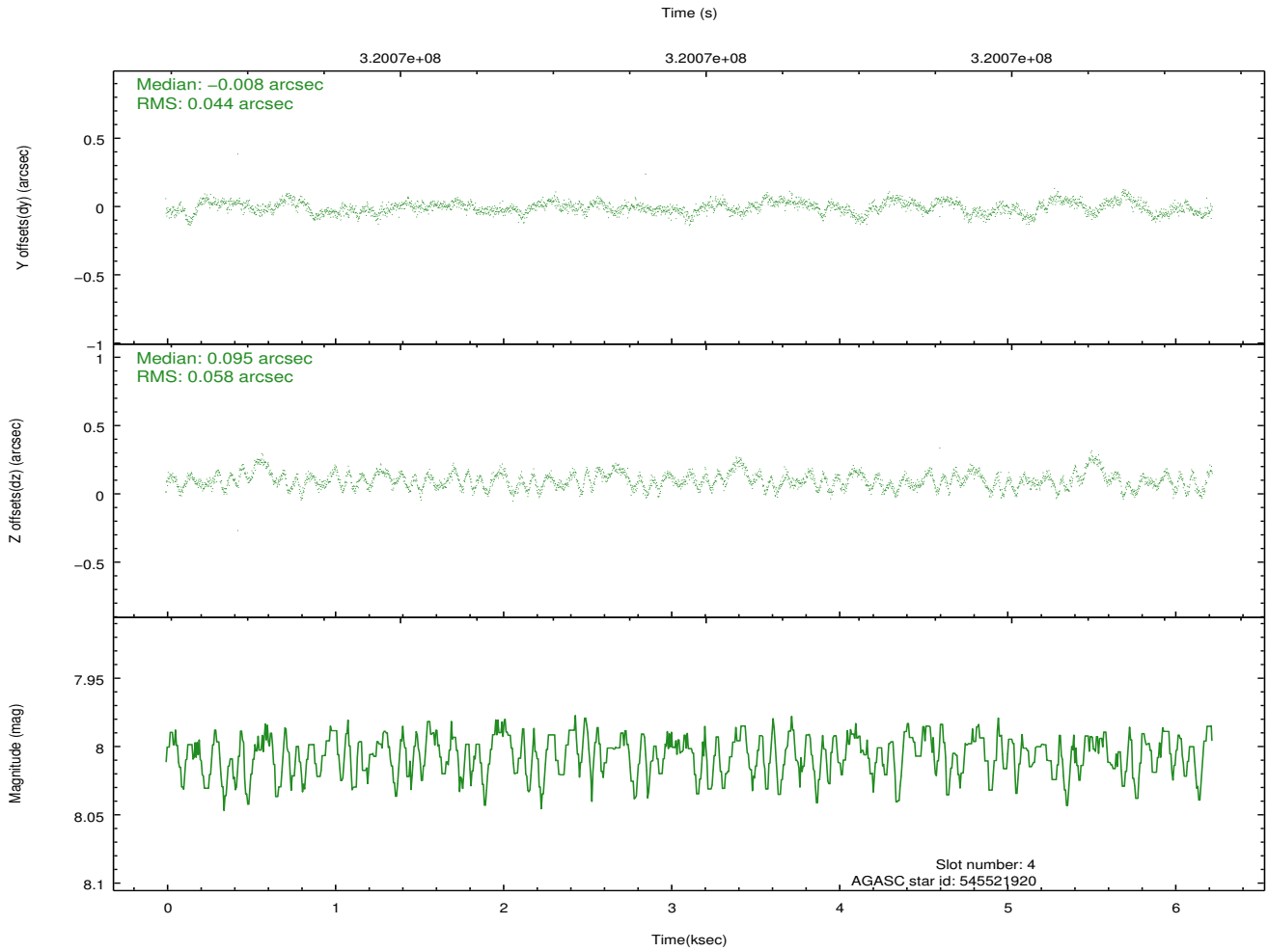
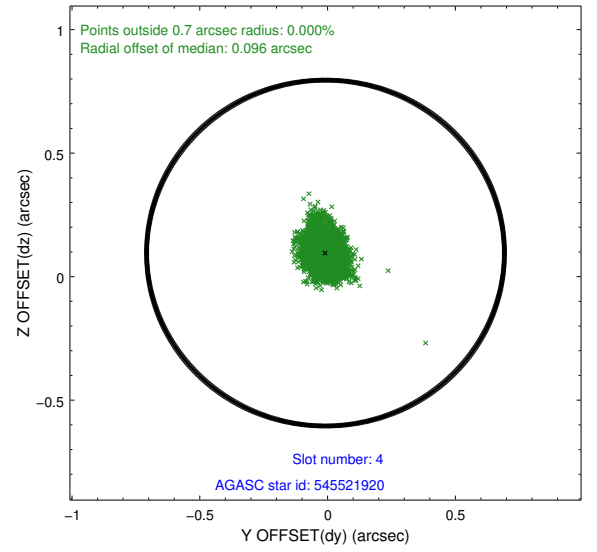
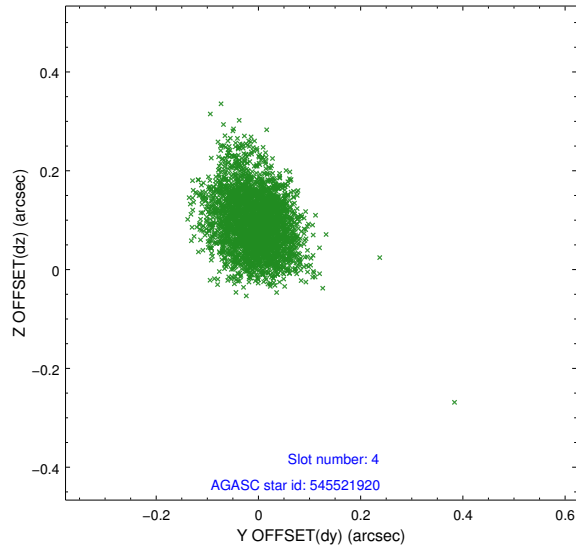
slot	status	id	mag	n_pts	med_dy	med_dz	dr1	dr2	ra	dec	mean_y	mean_z
0	FID	ACIS-S-2	7.10	1520	-0.051	-0.061	0.008	0.012	0.000000	0.000000	-766.72	-1735.30
1	FID	ACIS-S-4	7.20	1520	0.184	0.041	0.006	0.010	0.000000	0.000000	2146.35	172.30
2	FID	ACIS-S-5	7.23	1520	-0.164	0.029	0.007	0.011	0.000000	0.000000	-1818.47	167.04
3	GUIDE	544610144	10.49	3021	0.016	-0.185	0.181	0.301	188.053759	61.465061	-469.23	1990.77
4	GUIDE	545521920	8.01	3038	-0.008	0.095	0.077	0.125	190.203465	62.042567	-1879.07	-1976.60
5	GUIDE	545523592	10.21	3031	0.038	-0.075	0.208	0.334	188.664324	61.541019	-1094.59	1104.67
6	GUIDE	545916224	9.58	3034	-0.047	0.222	0.212	0.338	188.817359	62.651242	1306.63	-2099.74
7	GUIDE	544605560	10.25	3032	-0.016	-0.067	0.177	0.288	187.386670	62.313812	2351.29	358.28

2.4 Star Slots

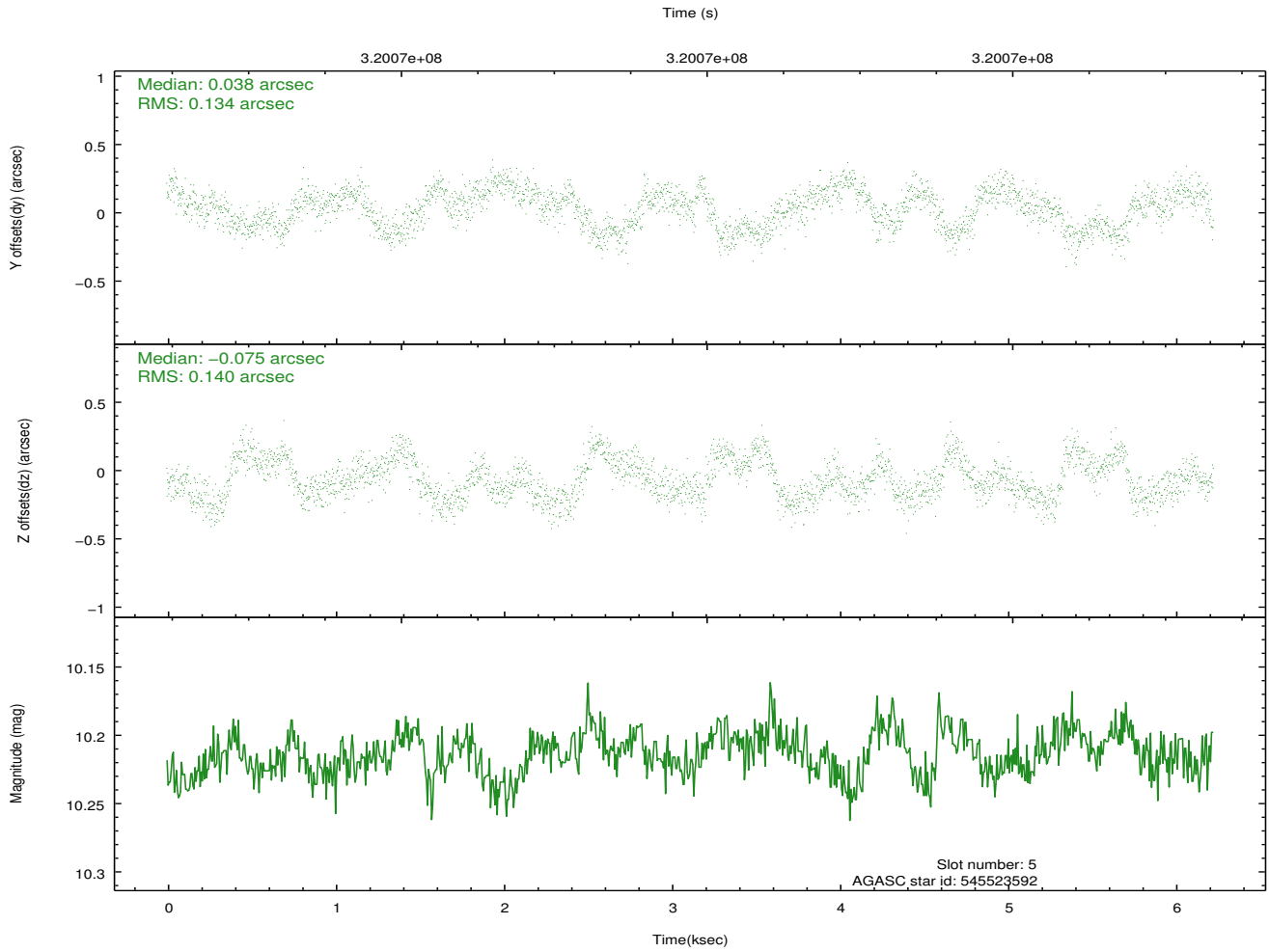
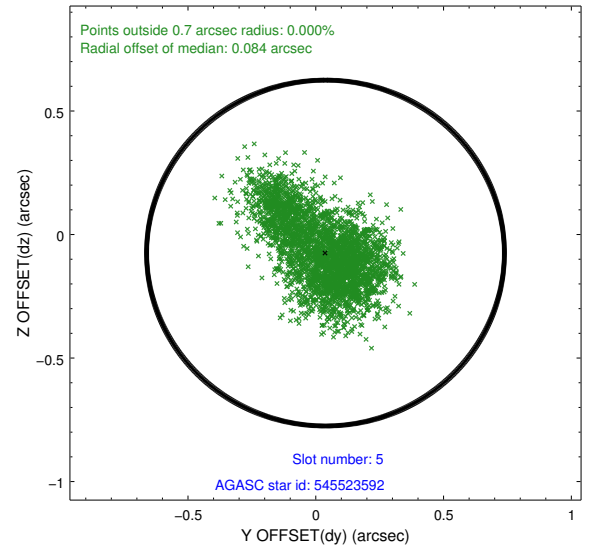
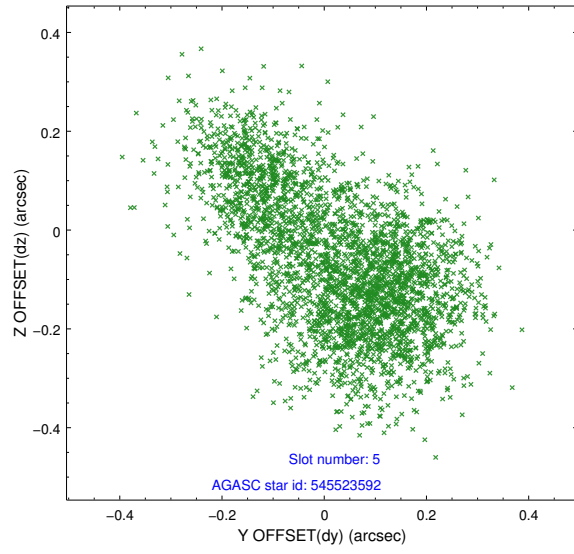
2.4.1 Slot 3



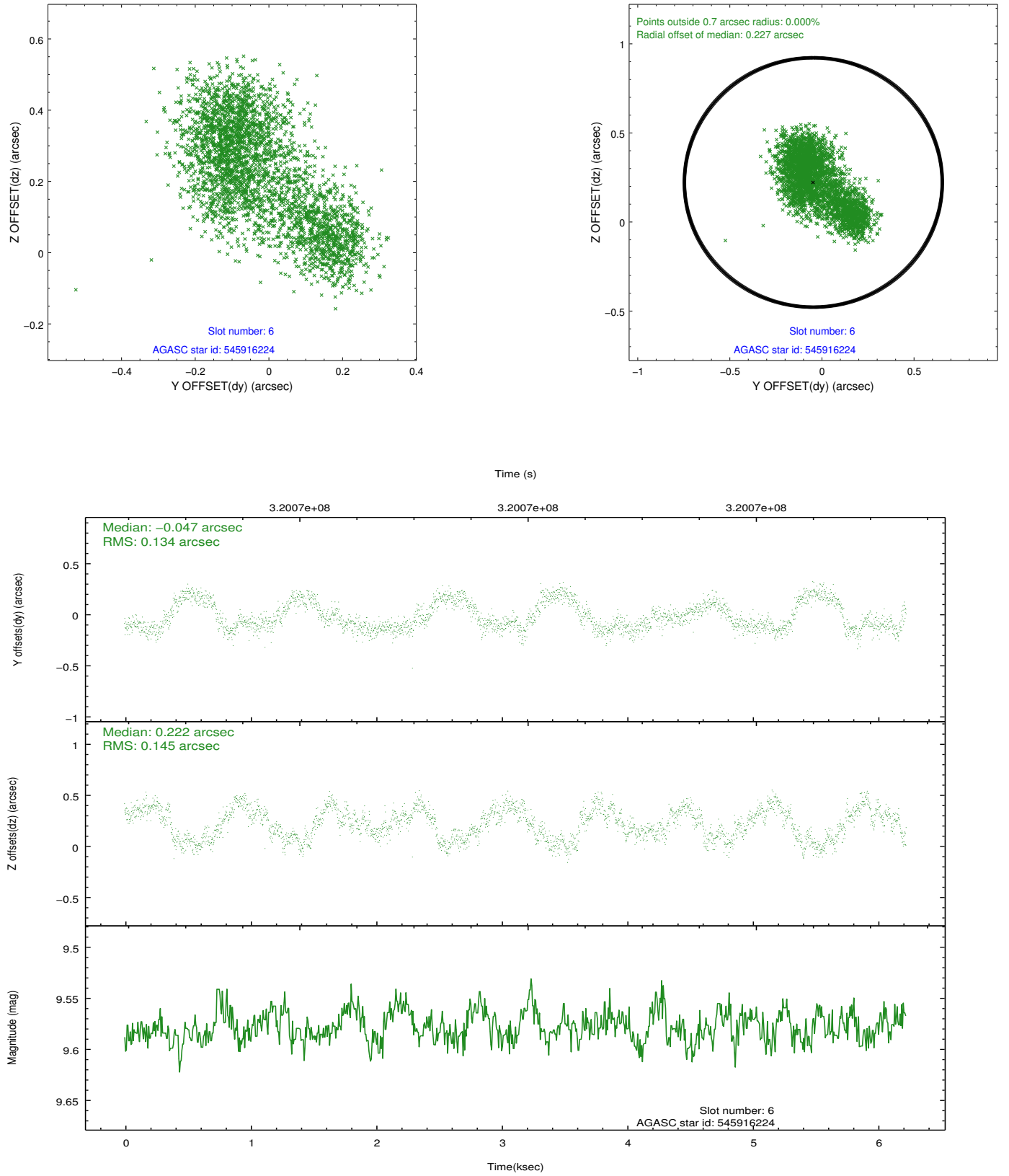
2.4.2 Slot 4



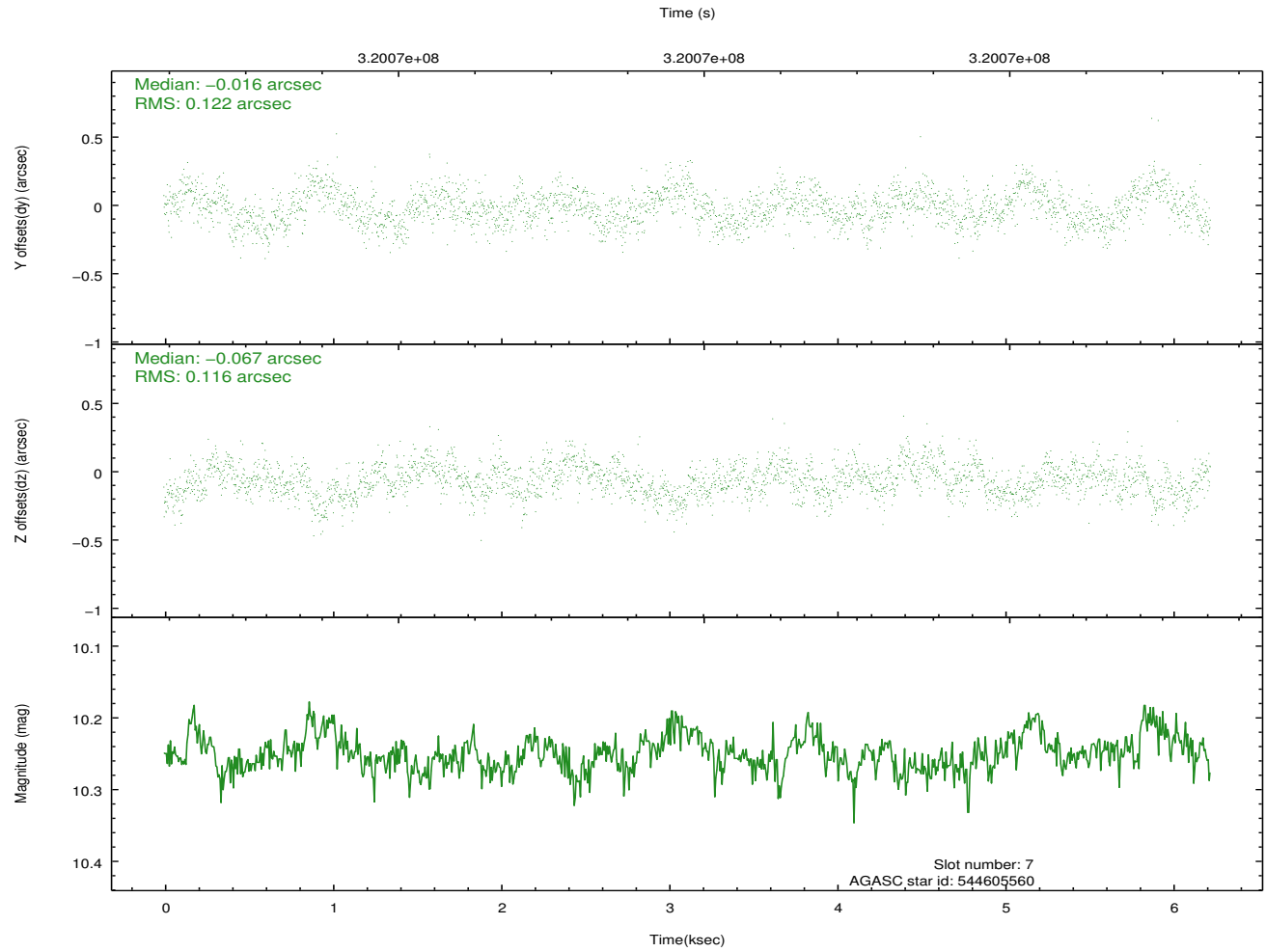
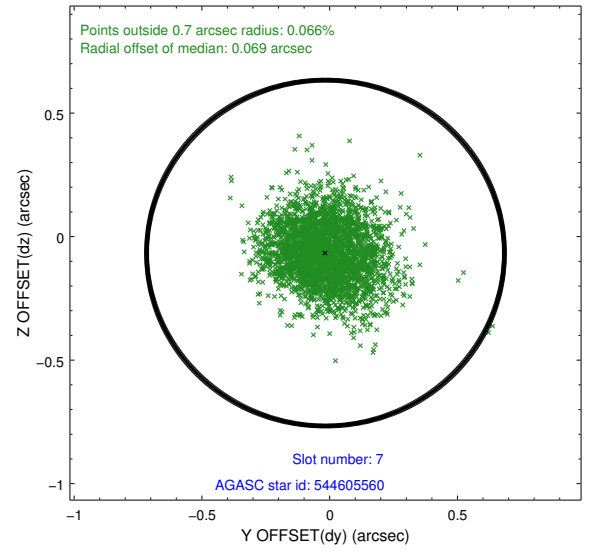
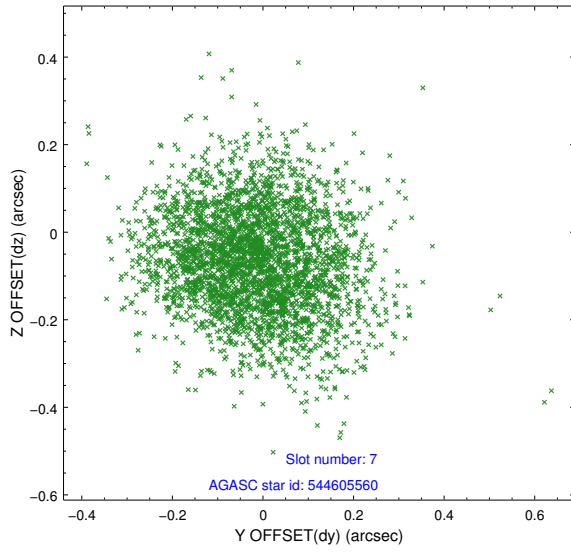
2.4.3 Slot 5



2.4.4 Slot 6

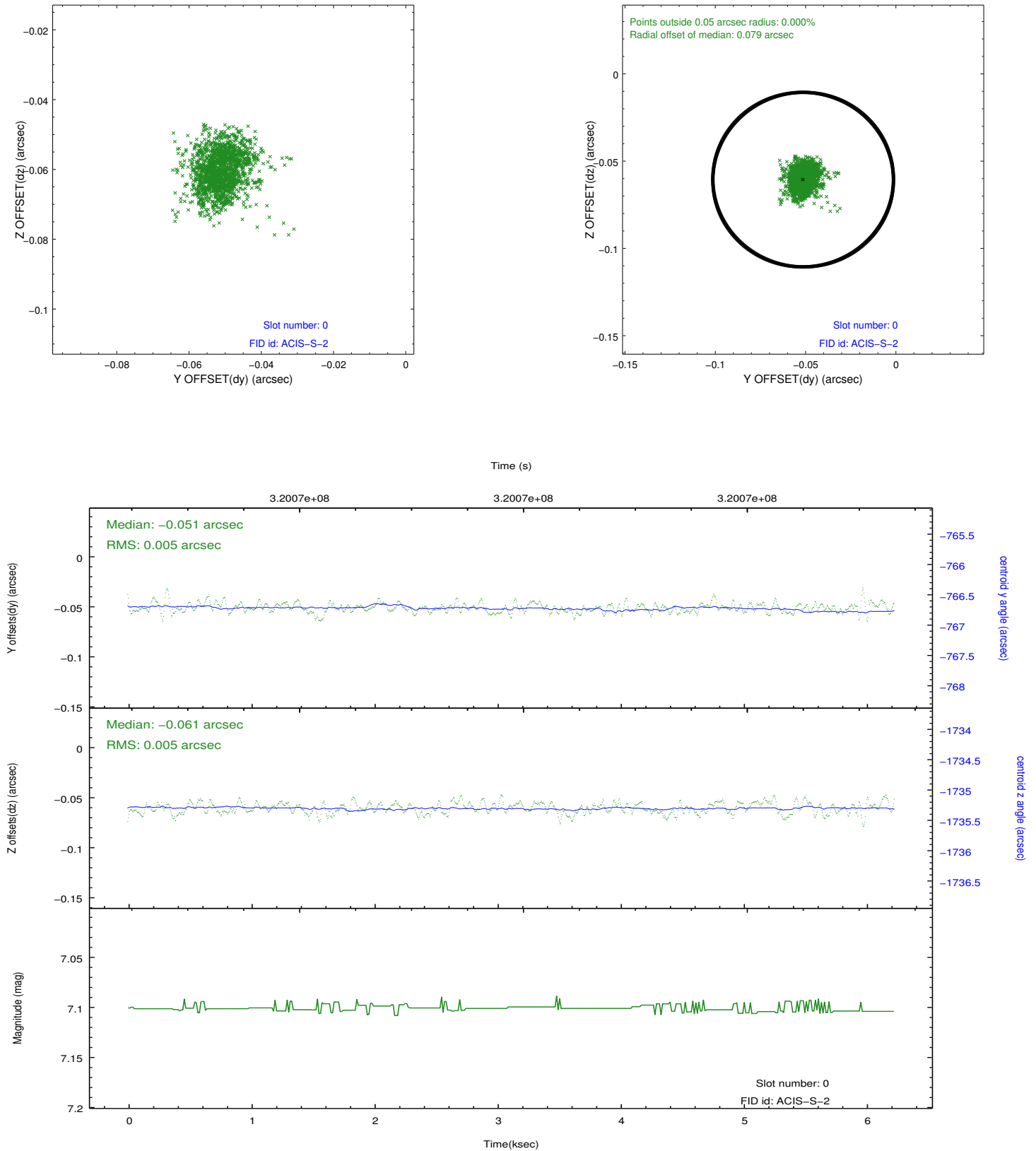


2.4.5 Slot 7

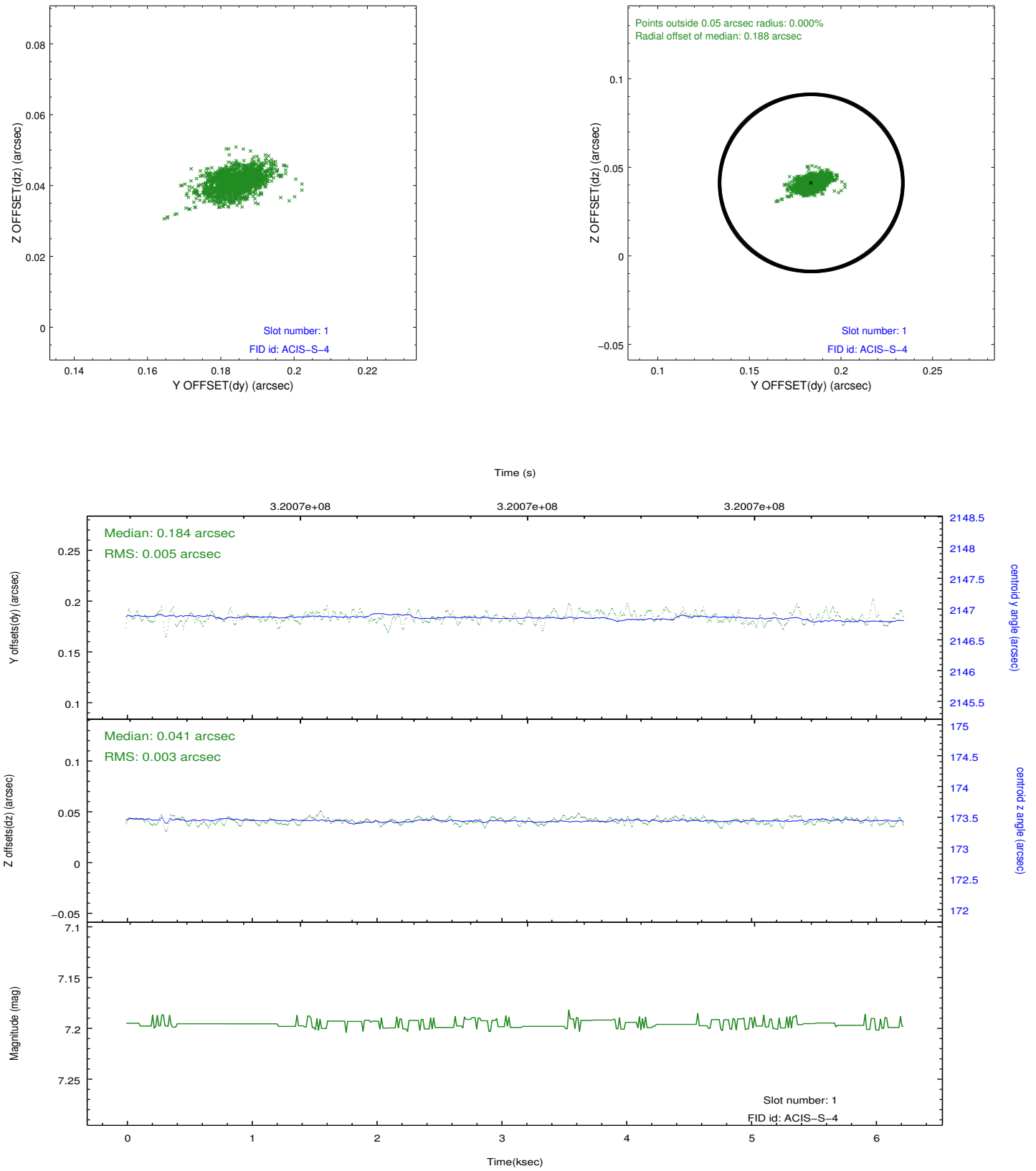


2.5 FID Slots

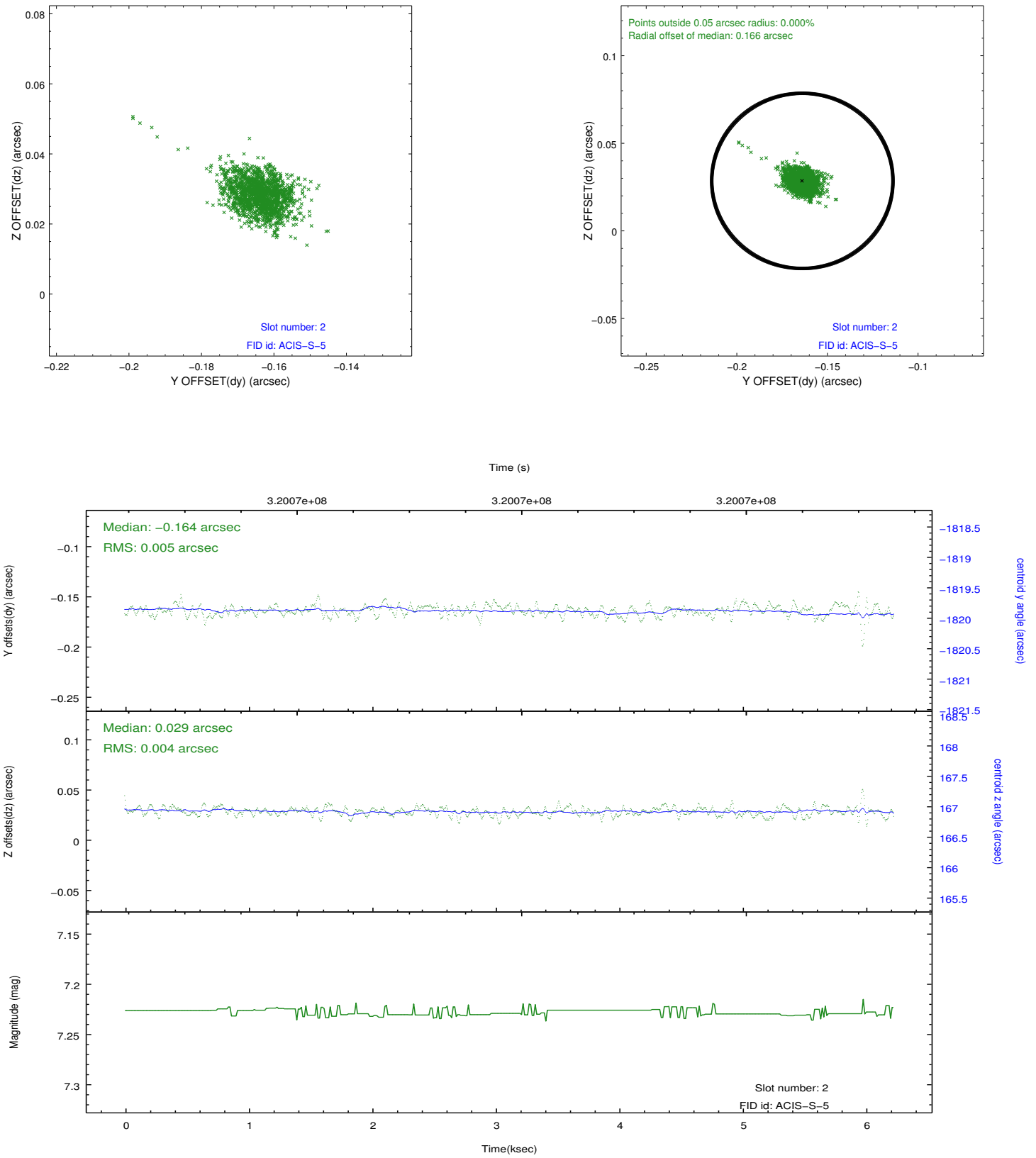
2.5.1 Slot 0



2.5.2 Slot 1



2.5.3 Slot 2



A Summary

A.1 Status

V&V Scientist	Jen Lauer
V&V Date (YYYY-MM-DD)	2012.05.13
V&V Edition	1
V&V Disposition and Status	OK
V&V Charge Time	6.22079997

A.2 Comments