

V&V Reference Report

L2 ASCDS Version : 8.4.4

Observation 9862 - L2 Version 2
Chandra X-Ray Center

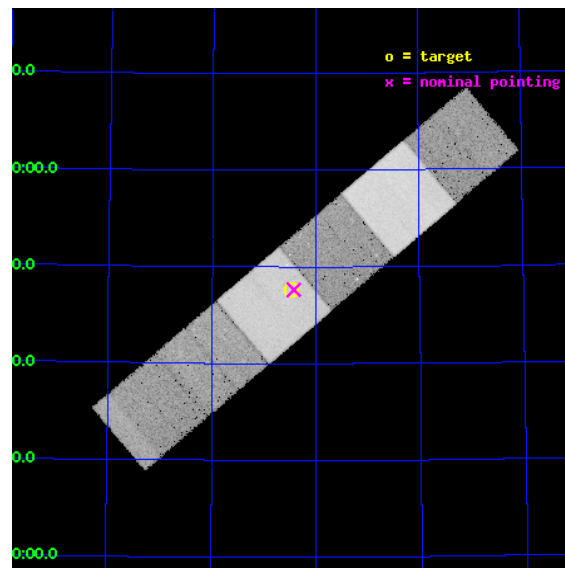
L2 Processing Date : May 15 2012

Contents

1	Front	2
2	OBI	3
2.1	OBI	3
2.1.1	Images	3
2.1.2	Bias	3
2.1.3	Parameters	4
2.1.4	Events	4
2.2	Compared Parameters	5
2.3	Aspect	6
2.4	Star Slots	9
2.4.1	Slot 3	9
2.4.2	Slot 4	10
2.4.3	Slot 5	11
2.4.4	Slot 6	12
2.4.5	Slot 7	13
2.5	FID Slots	14
2.5.1	Slot 0	14
2.5.2	Slot 1	15
2.5.3	Slot 2	16
A	Summary	17
A.1	Status	17
A.2	Comments	17

1 Front

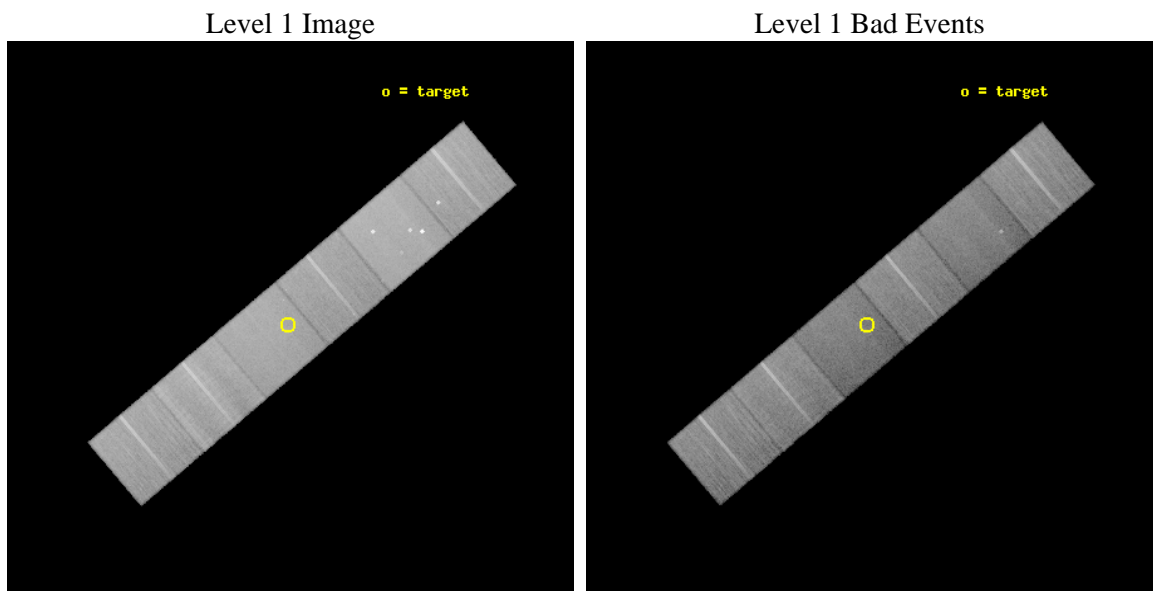
seq_num	501018	Sequence number
obs_id	9862	Observation id
title	An Unexpected Re-Brightening in SHB 080503: Afterglow or mini-Supernova, 2nd Epoch	Proposal title
observer	Professor Nathaniel Butler	Principal investigator
object	SHB 080503	Source name
dtcycle	0	
cycle	P	events from which exps? Prim/Second/Both
ra_targ	286.62	Observer's specified target RA [deg]
dec_targ	68.793194	Observer's specified target Dec [deg]
ra_nom	286.60675114901	Nominal RA [deg]
dec_nom	68.793938579902	Nominal Dec [deg]
roll_nom	139.71734499073	Nominal Roll [deg]
revision	2	Processing version of data
ontime	30147.199887753	Sum of GTIs [s]
livetime	29765.457890309	Livetime [s]
ontime4	30140.71790719	Sum of GTIs [s]
ontime5	30147.199887753	Sum of GTIs [s]
ontime6	30140.718016803	Sum of GTIs [s]
ontime7	30147.199887753	Sum of GTIs [s]
ontime8	30143.959016919	Sum of GTIs [s]
ontime9	30143.958917439	Sum of GTIs [s]
l2events	365107	Number of level 2 events



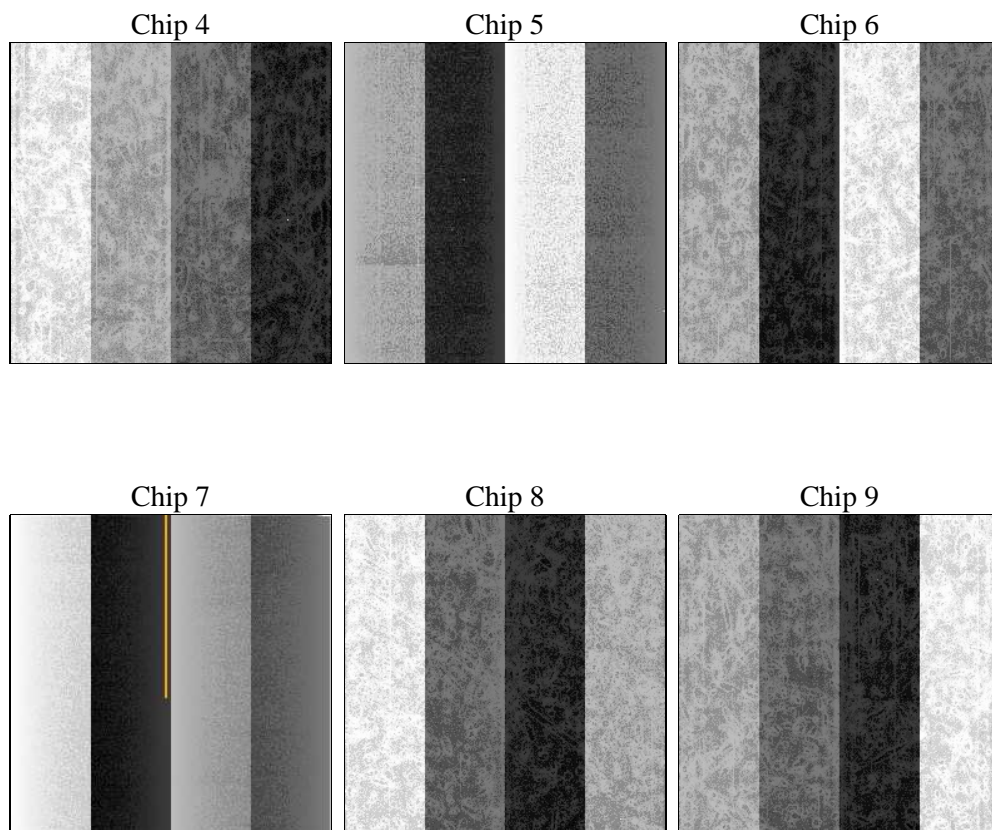
2 OBI

2.1 OBI

2.1.1 Images



2.1.2 Bias



2.1.3 Parameters

obi_num	0	Obi number	sched_exp_time	30000.000000	[s] Scheduled observation exposure time
ascdsver	8.4.4	Processing system revision	ontime	30147.199887753	Sum of GTIs [s]
caldsver	4.4.9	 	ontime4	30140.71790719	Sum of GTIs [s]
date	2012-05-15T16:20:28	Date and time of file creation	ontime5	30147.199887753	Sum of GTIs [s]
revision	2	Processing version of data	ontime6	30140.718016803	Sum of GTIs [s]
			ontime7	30147.199887753	Sum of GTIs [s]
			ontime8	30143.959016919	Sum of GTIs [s]
			ontime9	30143.958917439	Sum of GTIs [s]
			l1events	1655745	Number of level 1 events

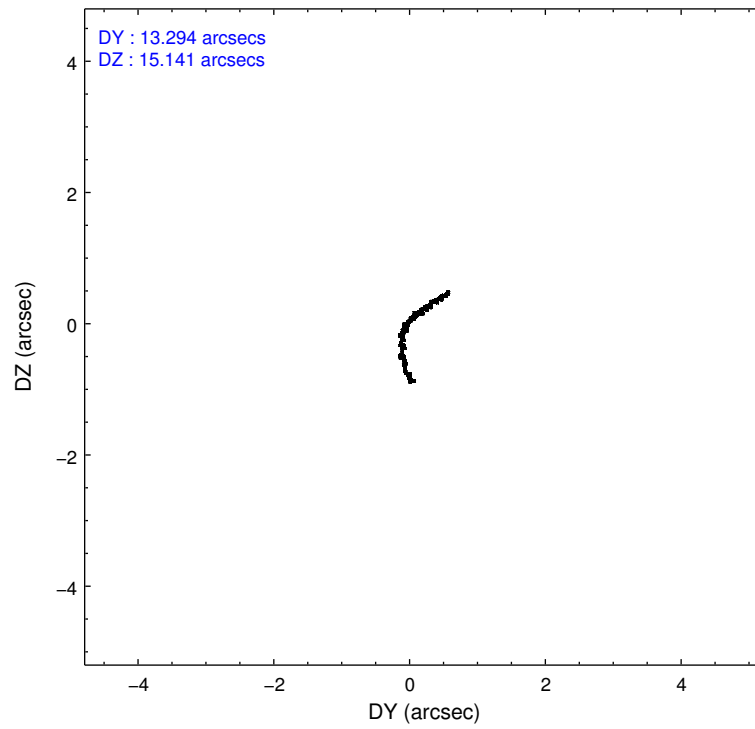
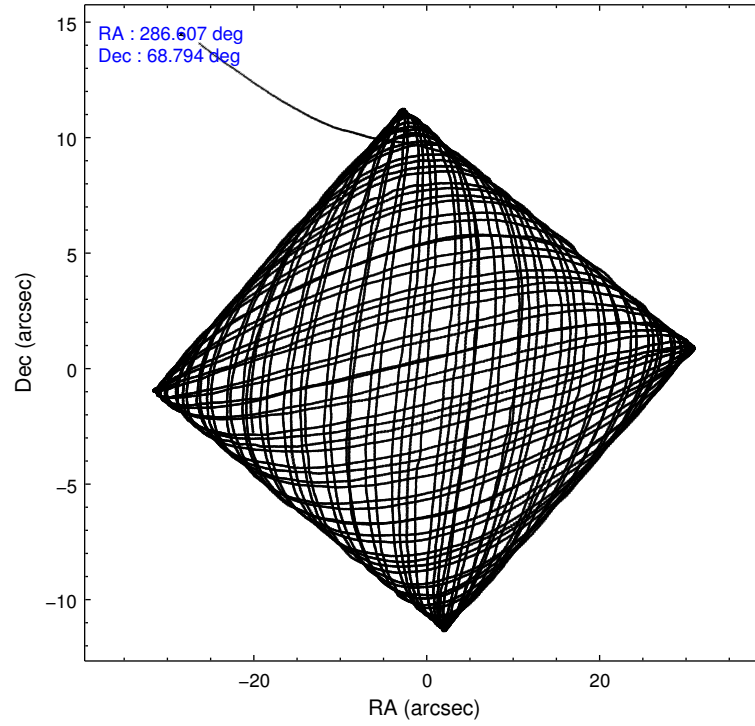
2.1.4 Events

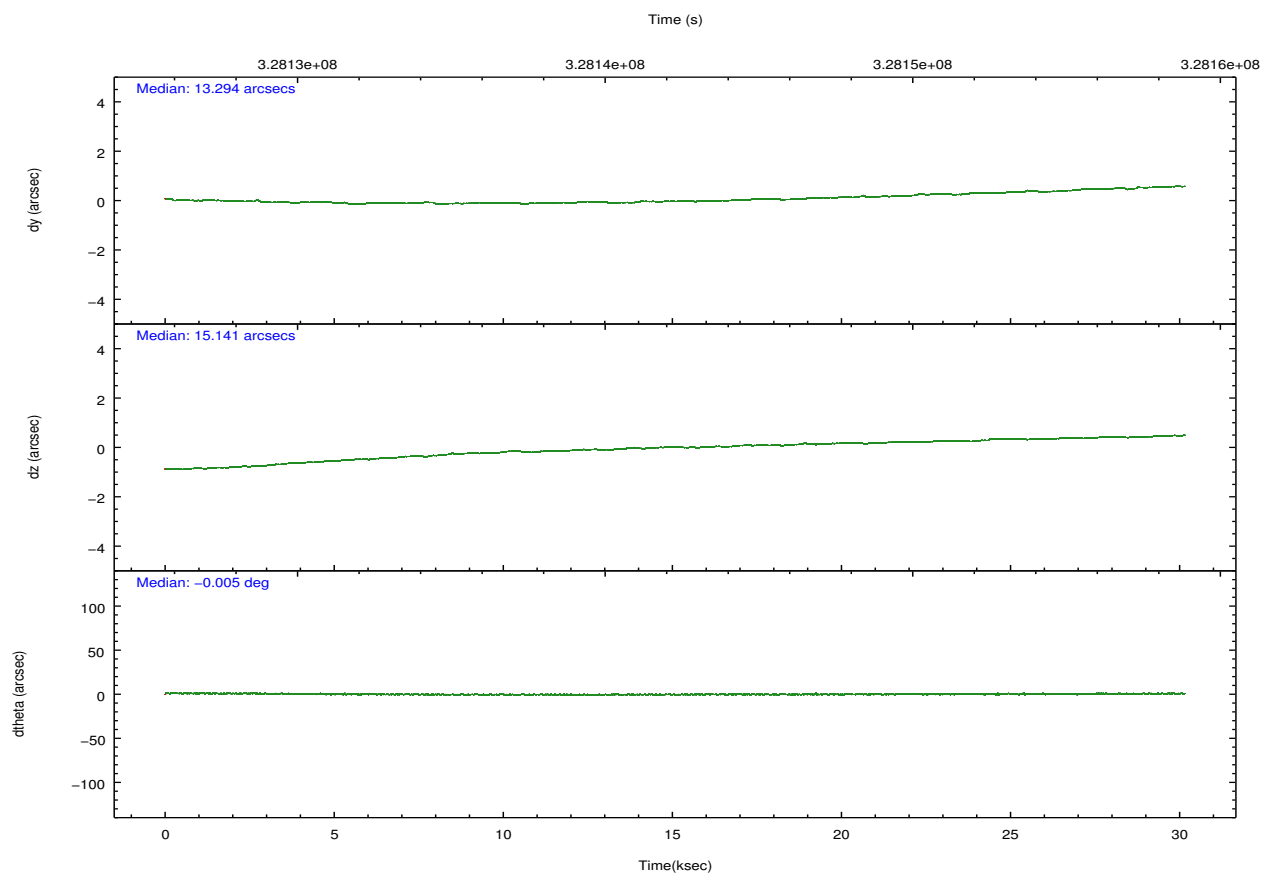
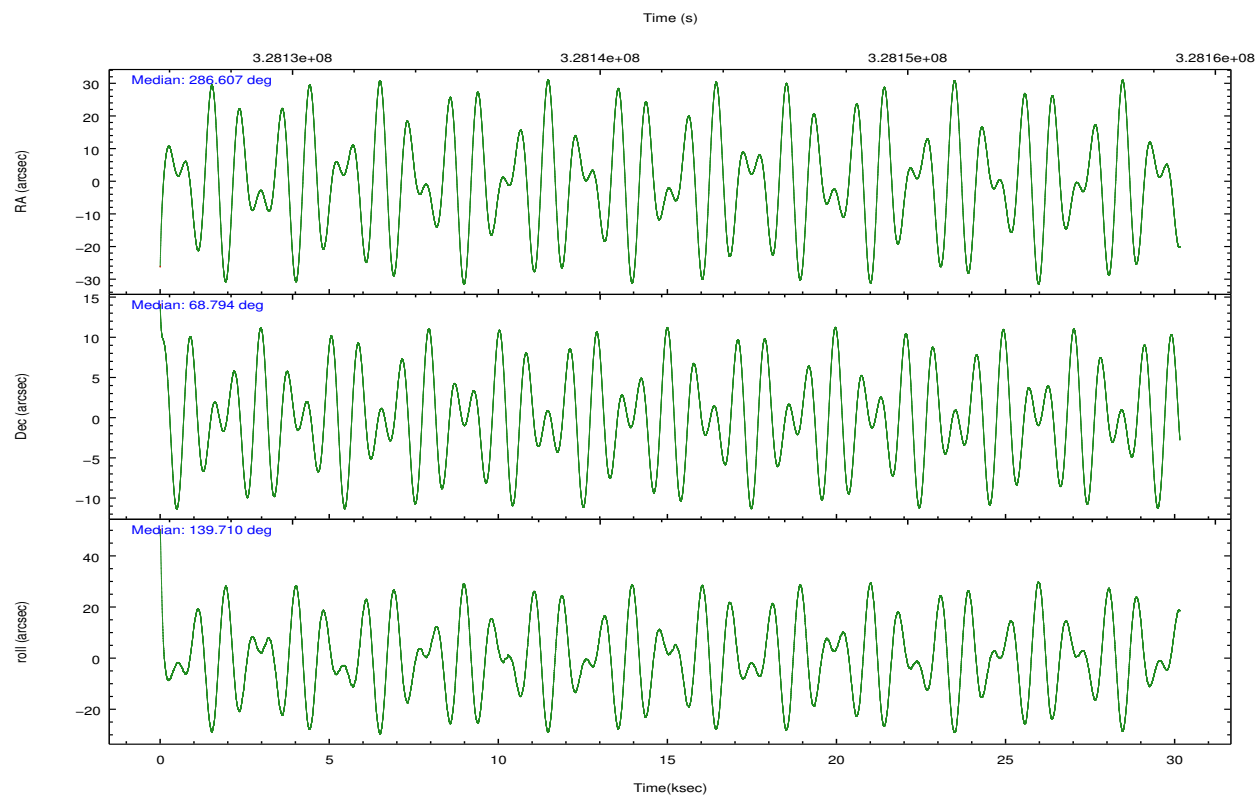
	ccd 4	ccd 5	ccd 6	ccd 7	ccd 8	ccd 9		ccd 4	ccd 5	ccd 6	ccd 7	ccd 8	ccd 9
level 1 events	277131	342147	233623	265829	300788	236227	grade 0 events	13655	24413	8903	11428	22330	9620
rejected events	247169	167220	208616	144383	225589	210166		4%	7%	3%	4%	7%	4%
rejected %	89%	48%	89%	54%	74%	88%	grade 1 events	275	1383	135	345	261	125
								0%	0%	0%	0%	0%	0%
							grade 2 events	6398	50696	5579	24822	17138	5584
								2%	14%	2%	9%	5%	2%
							grade 3 events	2932	7032	2642	11133	8075	2887
								1%	2%	1%	4%	2%	1%
							grade 4 events	2677	6773	2632	11108	7572	2737
								0%	1%	1%	4%	2%	1%
							grade 5 events	9501	26259	9582	27867	14262	10783
								3%	7%	4%	10%	4%	4%
							grade 6 events	4308	86052	5256	62991	20096	5239
								1%	25%	2%	23%	6%	2%
							grade 7 events	237385	139539	198894	116135	211054	199252
								85%	40%	85%	43%	70%	84%

2.2 Compared Parameters

Parameter	Planned	Actual	Parameter	Planned	Actual
Instrument	ACIS	ACIS	Obspar format version number	7	7
Detector	ACIS-456789	ACIS-456789	Obspar file type	PREDICTED	ACTUAL
Grating	NONE	NONE	Obspar update status	NONE	UPDATED
Data mode	VFAINT	VFAINT	CCD I0 on	N	N
Observation mode	POINTING	POINTING	CCD I1 on	N	N
[deg] Pointing RA	286.681294	286.606751149011	CCD I2 on	N	N
[deg] Pointing Dec	68.789374	68.79393857990205	CCD I3 on	N	N
[deg] Pointing Roll	139.491214	139.7173449907298	CCD S0 on	O1	Y
[mm] SIM focus pos	-0.684267	-0.6828225247311905	CCD S1 on	O3	Y
[mm] SIM defocus	0	0.001444936568705701	CCD S2 on	Y	Y
[mm] SIM translation stage pos	-190.132523	-190.1400660498719	CCD S3 on	Y	Y
[mm] SIM translation stage offset	0	0.00754346686406393	CCD S4 on	Y	Y
[s] Observation start time (MET)	328127357.184000	328126296.15256	CCD S5 on	O2	Y
Observation start date	2008-05-25T18:28:12	2008-05-25T18:11:36	Number of optional ACIS chips dropped	0	0
[s] Observation end time (MET)	328157357.184000	328158268.46662	On-chip summing requested	N	N
Observation end date	2008-05-26T02:48:12	2008-05-26T03:04:28	Subarray requested	NONE	NONE
Read mode	TIMED	TIMED	Alternating exposures requested	N	N
			[s] Primary exposure time	0.000000	3.2

2.3 Aspect



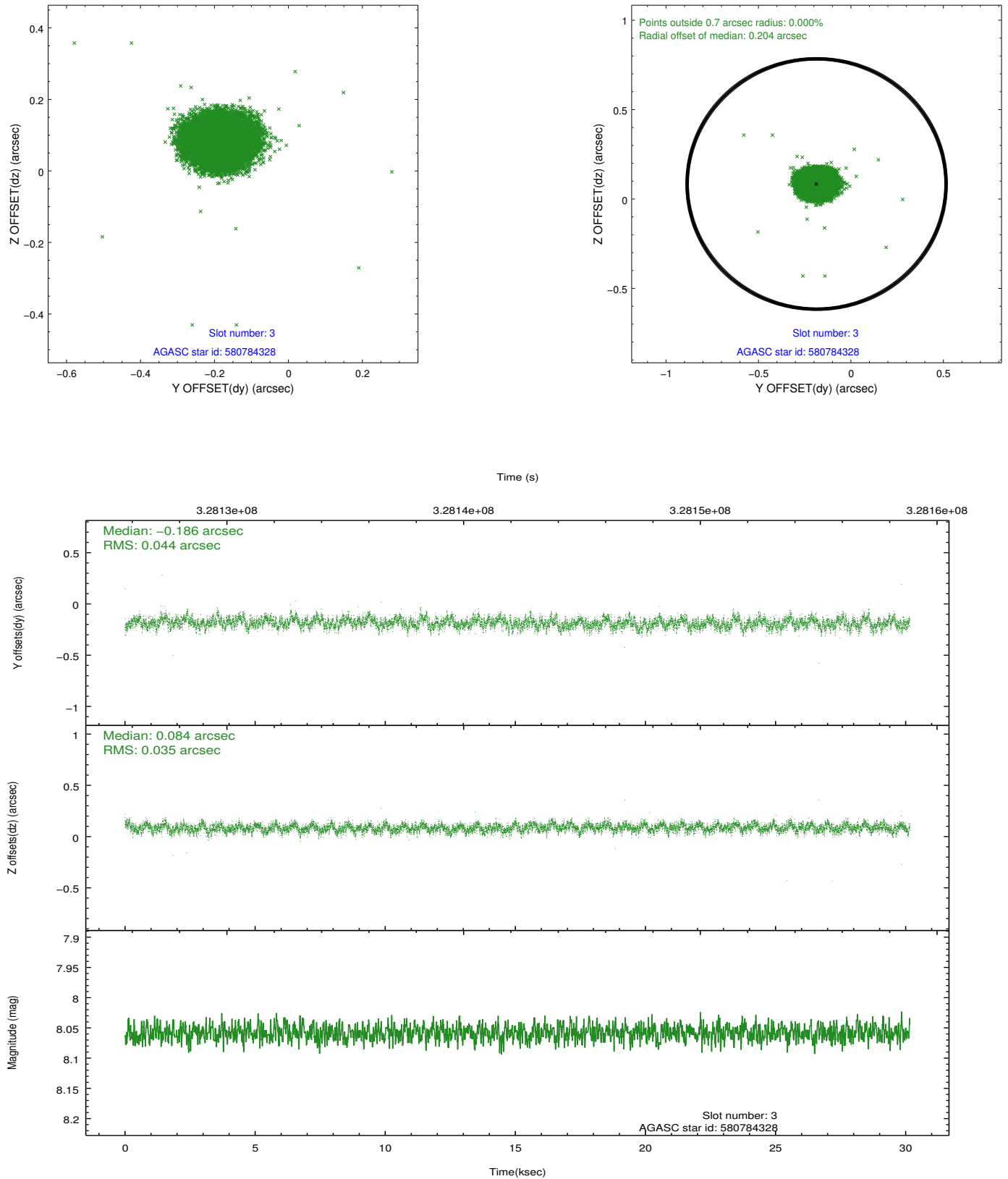


Slot Statistics

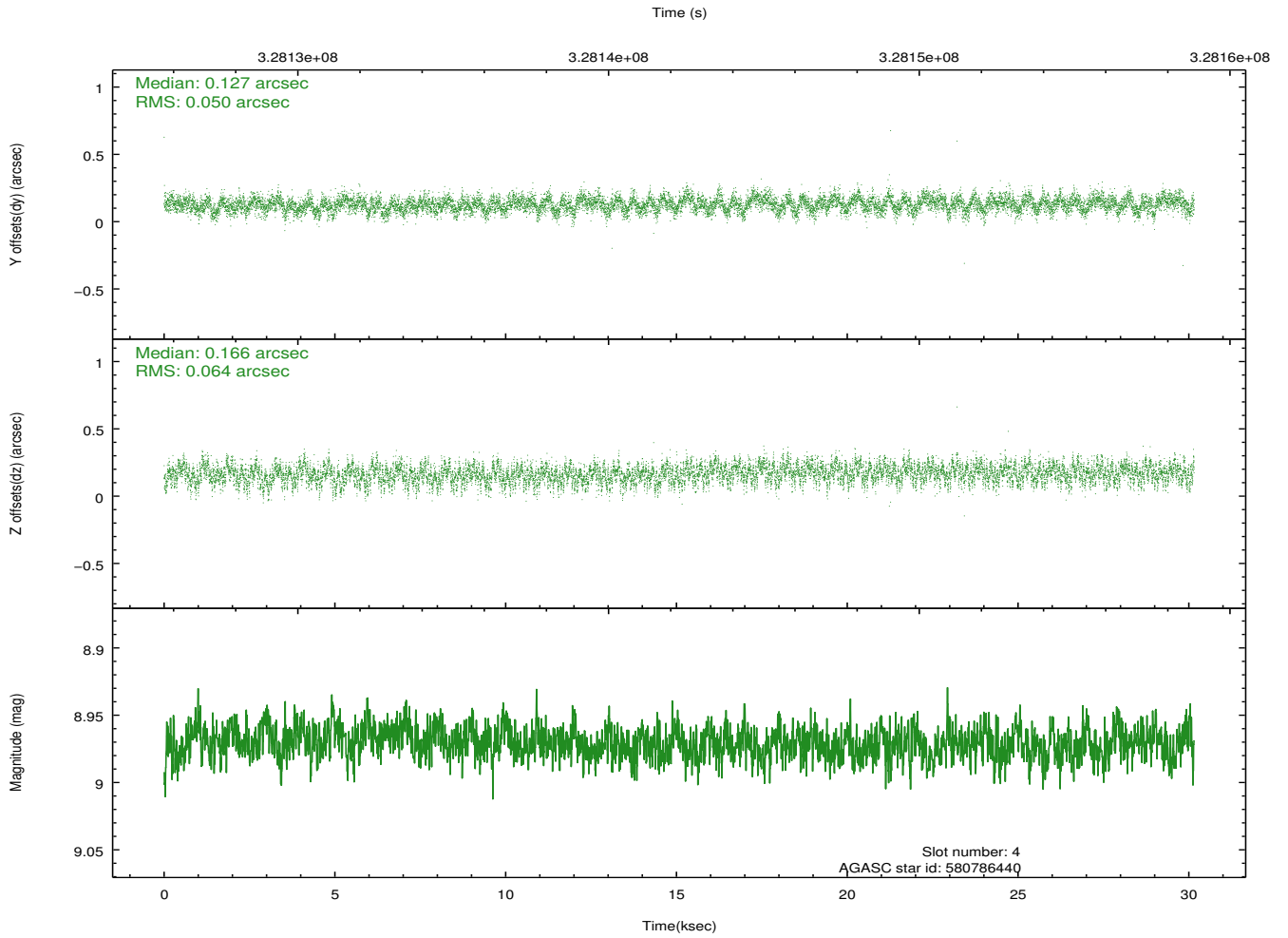
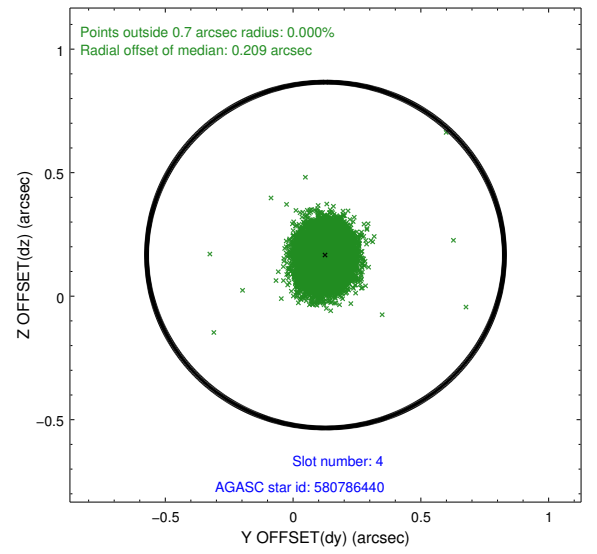
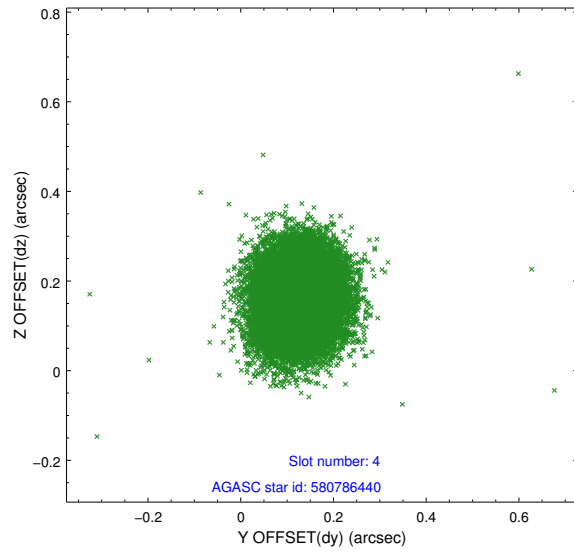
slot	status	id	mag	n_pts	med_dy	med_dz	dr1	dr2	ra	dec	mean_y	mean_z
0	FID	ACIS-S-2	6.85	7356	-0.046	0.011	0.012	0.019	0.000000	0.000000	-766.32	-1736.44
1	FID	ACIS-S-4	6.94	7356	0.122	0.019	0.008	0.015	0.000000	0.000000	2147.06	172.02
2	FID	ACIS-S-5	6.96	7354	-0.107	-0.022	0.011	0.018	0.000000	0.000000	-1819.16	165.67
3	GUIDE	580784328	8.06	14707	-0.186	0.084	0.059	0.096	285.766324	69.304741	2095.79	-660.66
4	GUIDE	580786440	8.97	14707	0.127	0.166	0.086	0.138	287.304436	69.196667	349.92	-1635.12
5	GUIDE	580789680	9.43	14704	0.190	0.008	0.128	0.197	286.742402	68.176896	-1494.91	1623.72
6	GUIDE	580794080	8.01	14709	-0.123	-0.081	0.073	0.115	284.693780	68.950915	2358.05	1195.75
7	GUIDE	580787176	7.54	14710	-0.016	-0.184	0.074	0.117	285.679069	68.325171	-65.34	2127.92

2.4 Star Slots

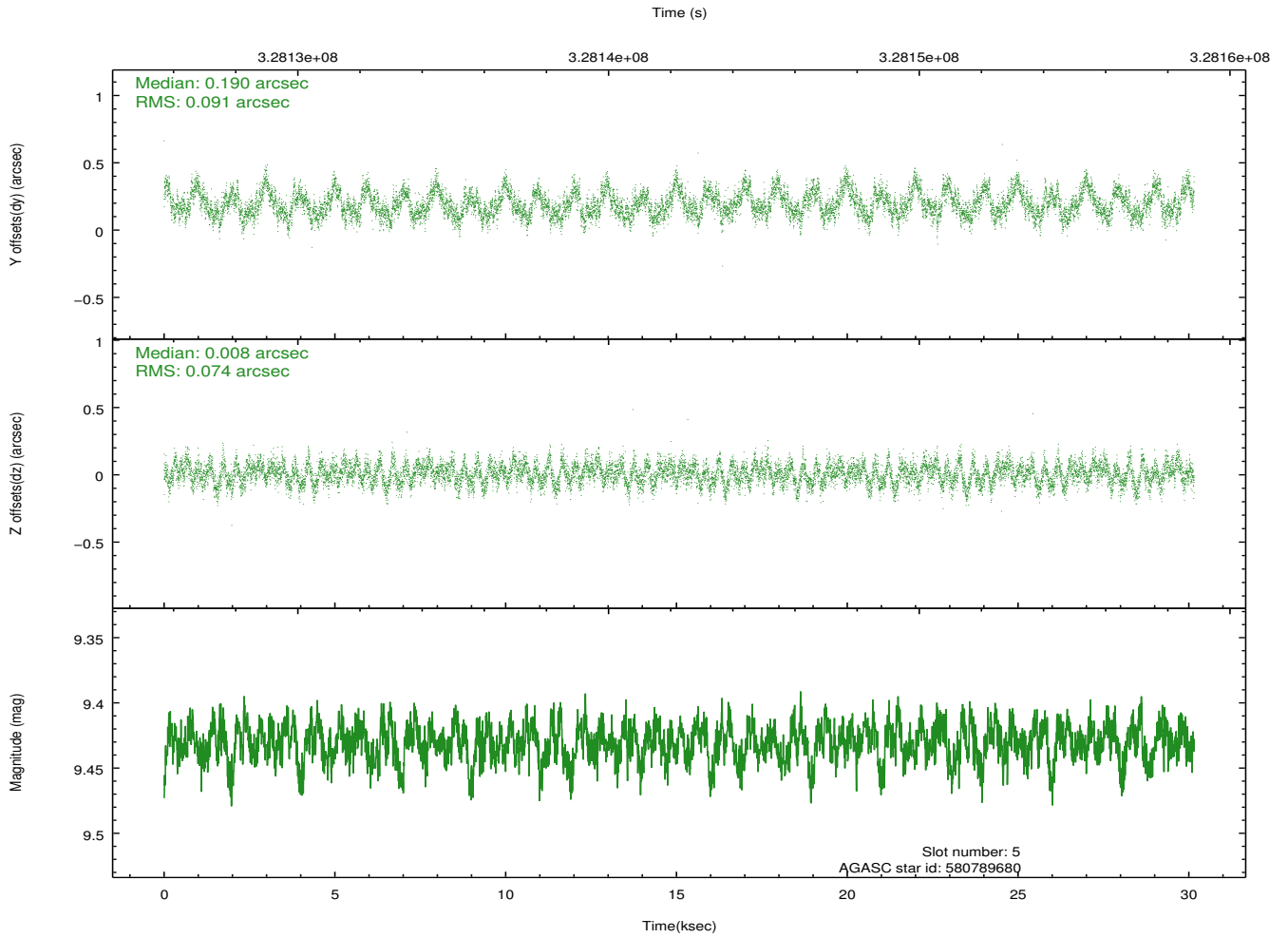
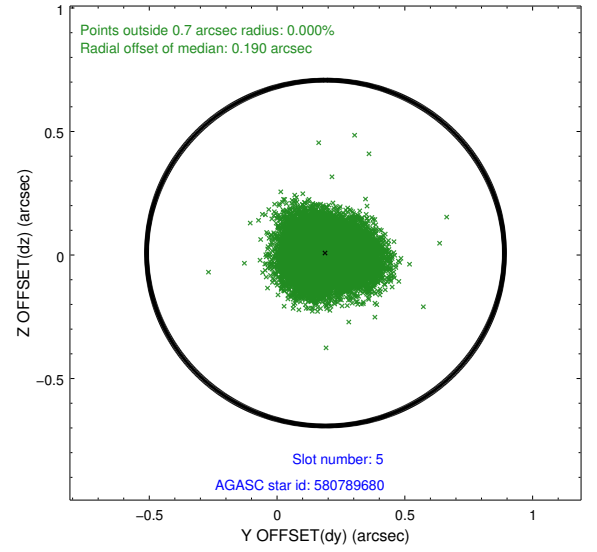
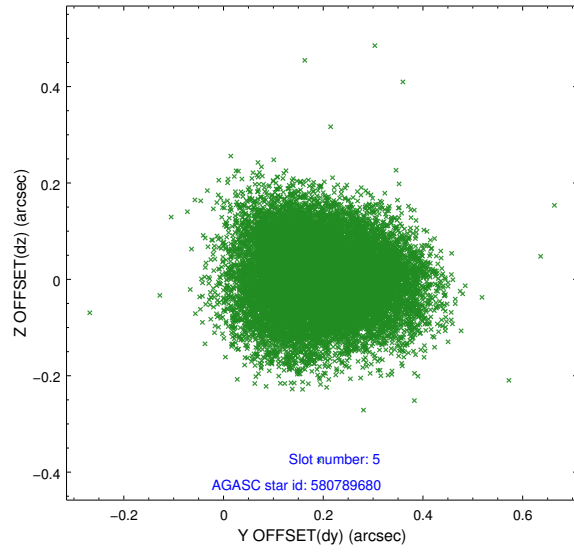
2.4.1 Slot 3



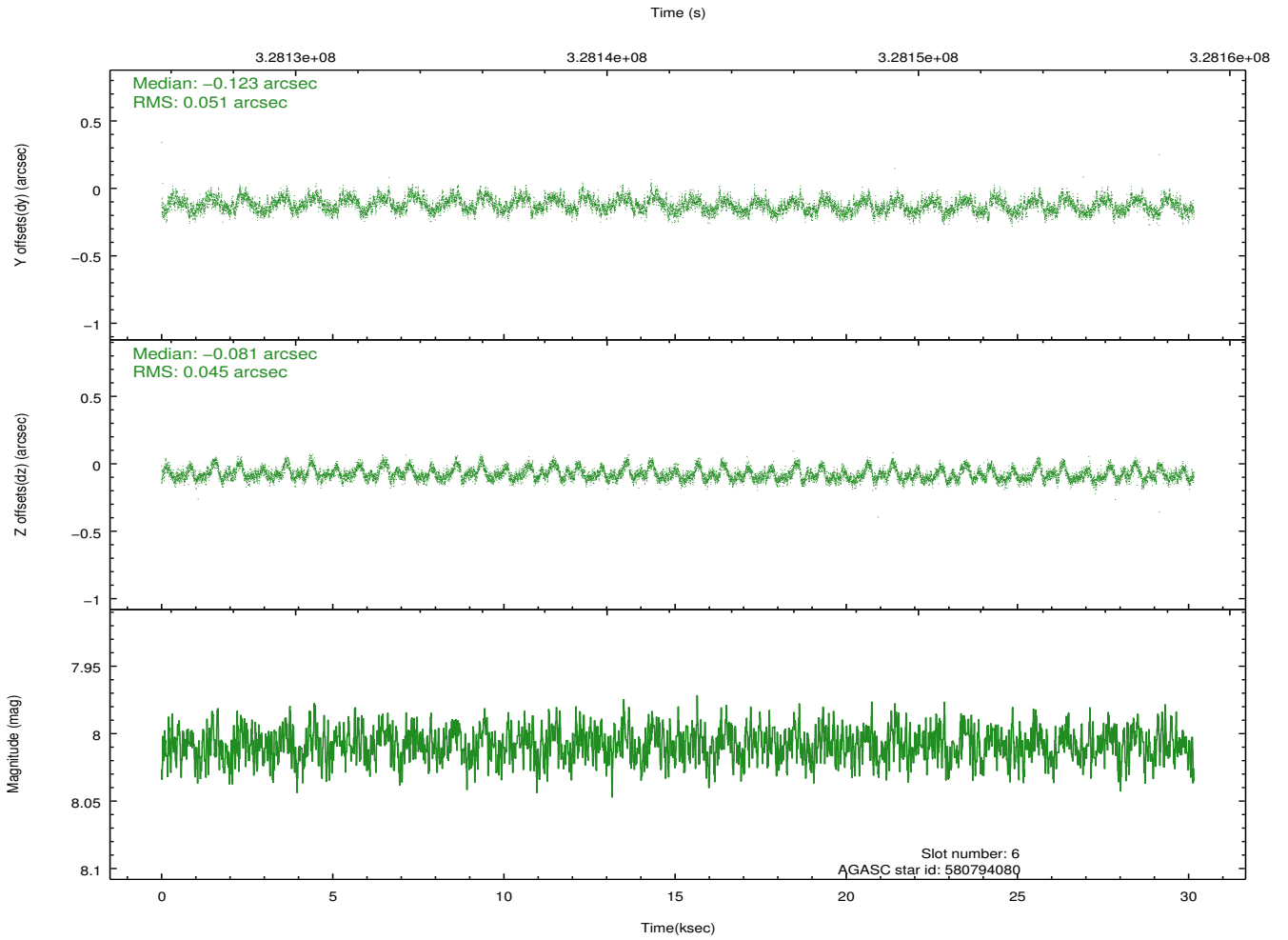
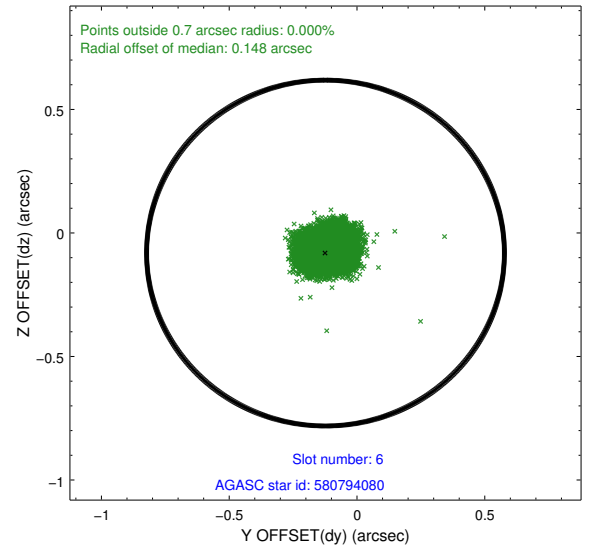
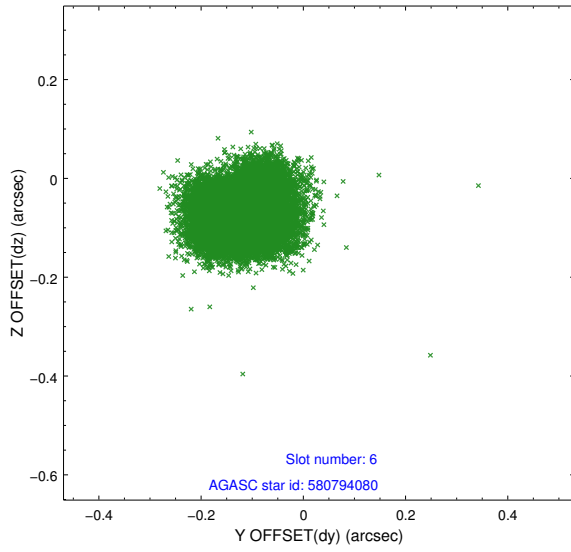
2.4.2 Slot 4



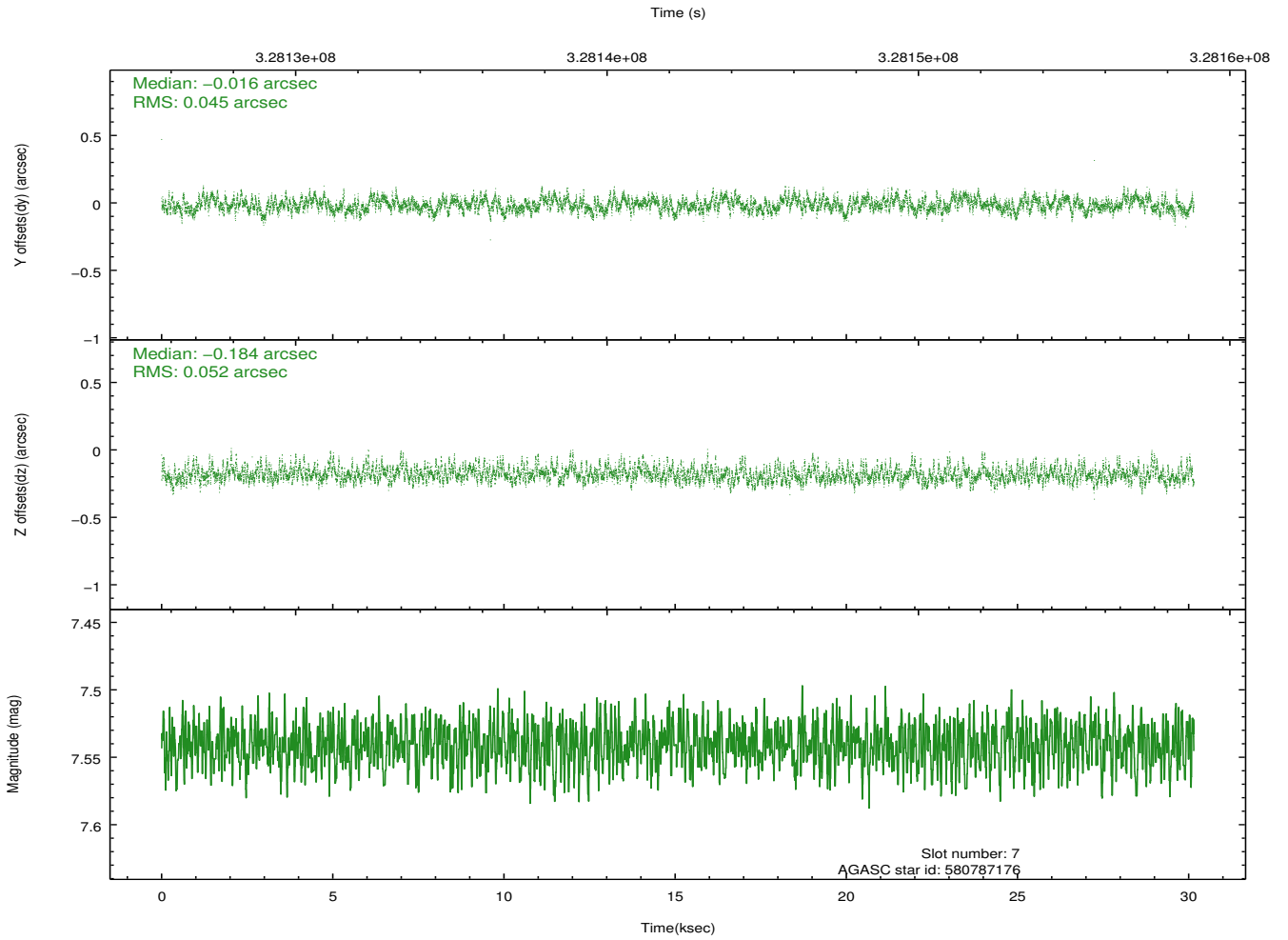
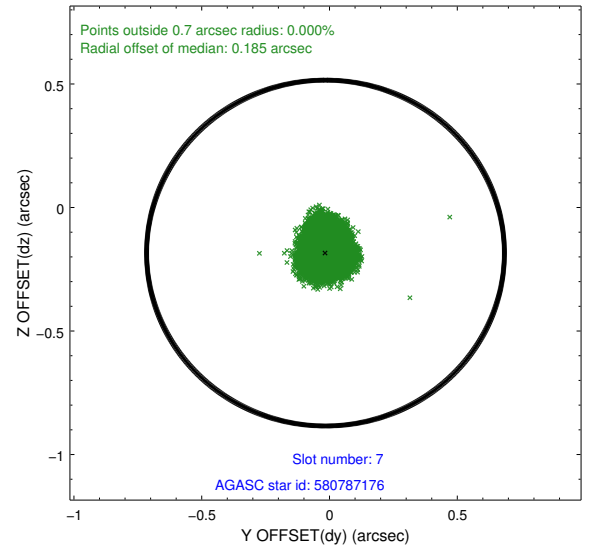
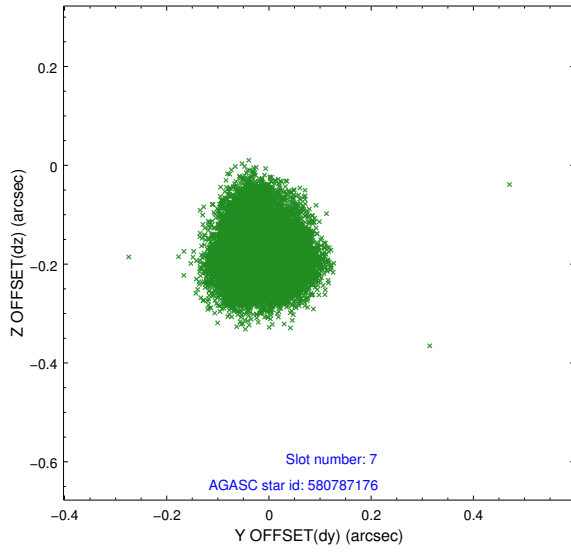
2.4.3 Slot 5



2.4.4 Slot 6

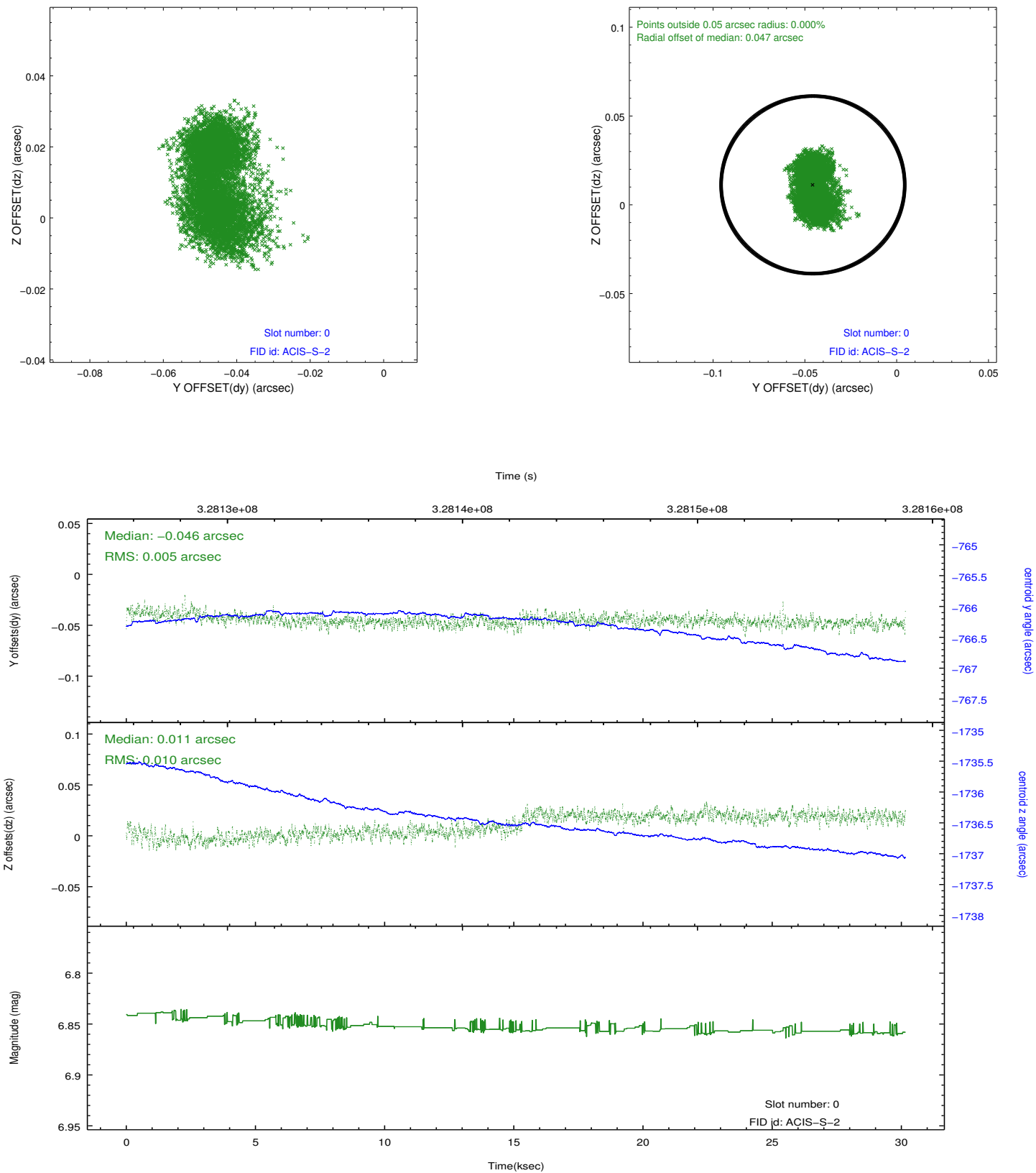


2.4.5 Slot 7

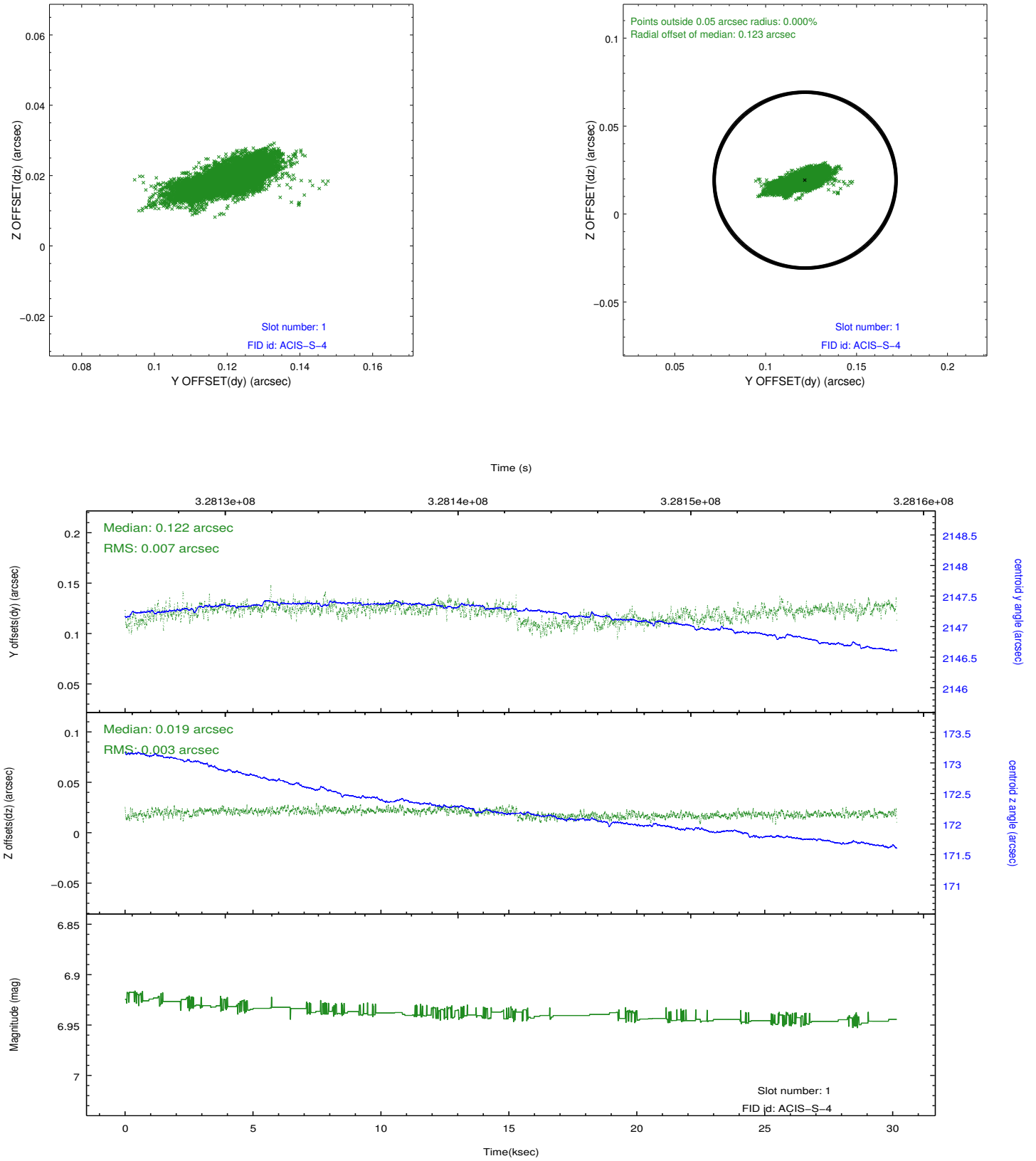


2.5 FID Slots

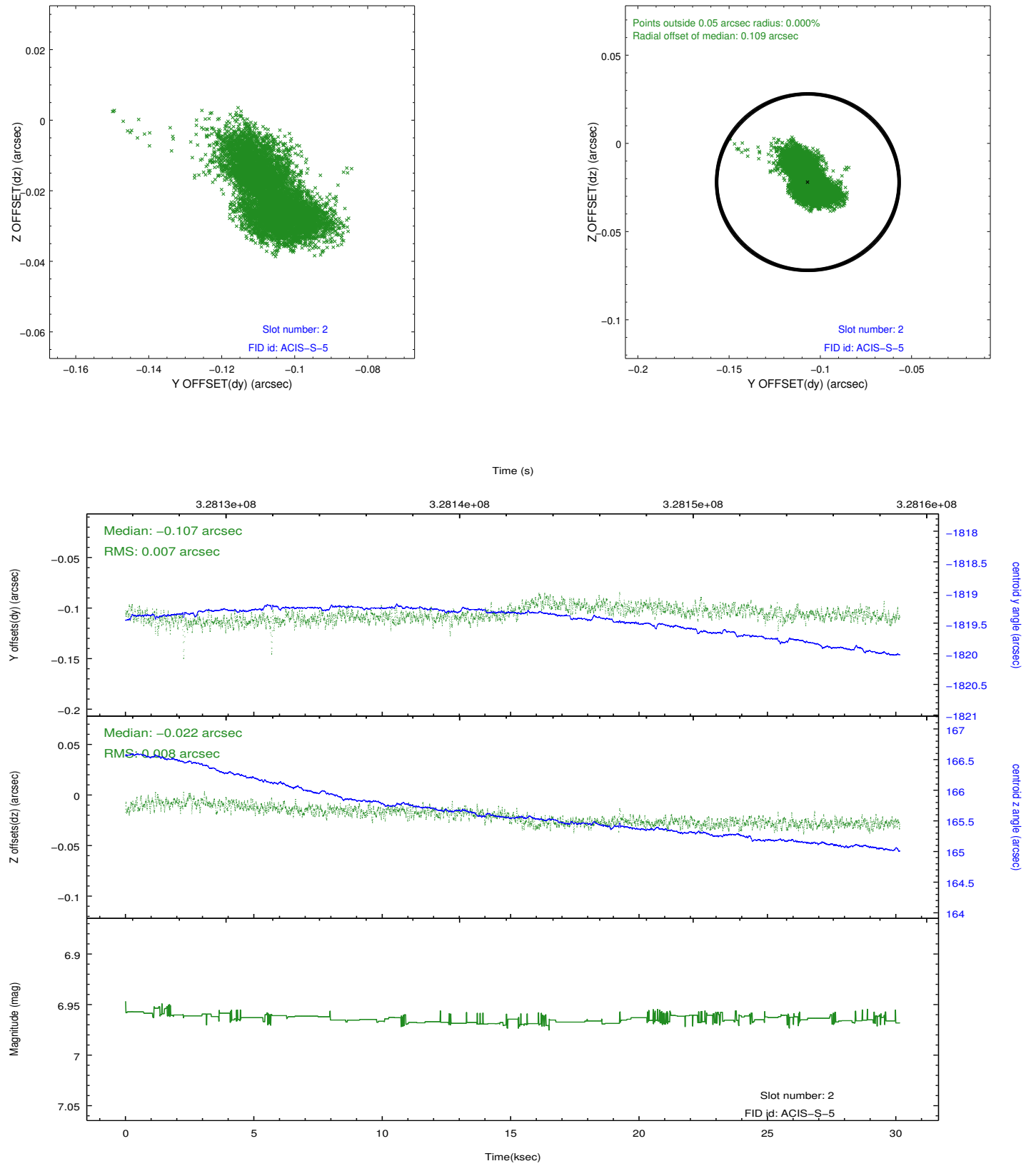
2.5.1 Slot 0



2.5.2 Slot 1



2.5.3 Slot 2



A Summary

A.1 Status

V&V Scientist	Beth Sundheim
V&V Date (YYYY-MM-DD)	2012.05.21
V&V Edition	1
V&V Disposition and Status	OK
V&V Charge Time	30.1471998

A.2 Comments