

V&V Reference Report

L2 ASCDS Version : 8.4.4

Observation 9812 - L2 Version 2
Chandra X-Ray Center

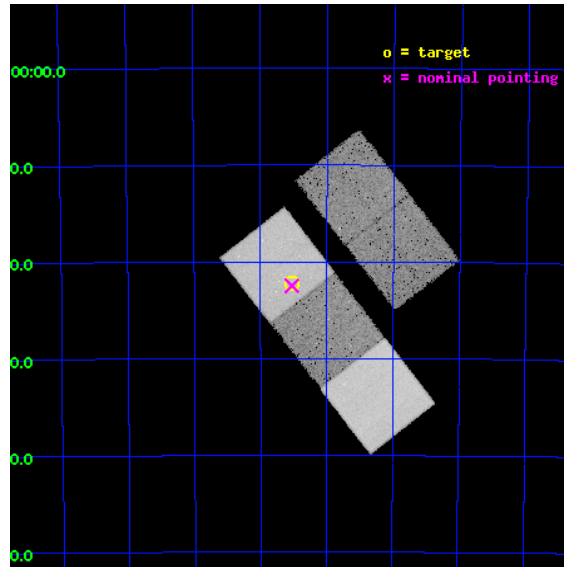
L2 Processing Date : May 14 2012

Contents

1	Front	2
2	OBI	3
2.1	OBI	3
2.1.1	Images	3
2.1.2	Bias	3
2.1.3	Parameters	4
2.1.4	Events	4
2.2	Compared Parameters	5
2.3	Aspect	6
2.4	Star Slots	9
2.4.1	Slot 3	9
2.4.2	Slot 4	10
2.4.3	Slot 5	11
2.4.4	Slot 6	12
2.4.5	Slot 7	13
2.5	FID Slots	14
2.5.1	Slot 0	14
2.5.2	Slot 1	15
2.5.3	Slot 2	16
A	Summary	17
A.1	Status	17
A.2	Comments	17

1 Front

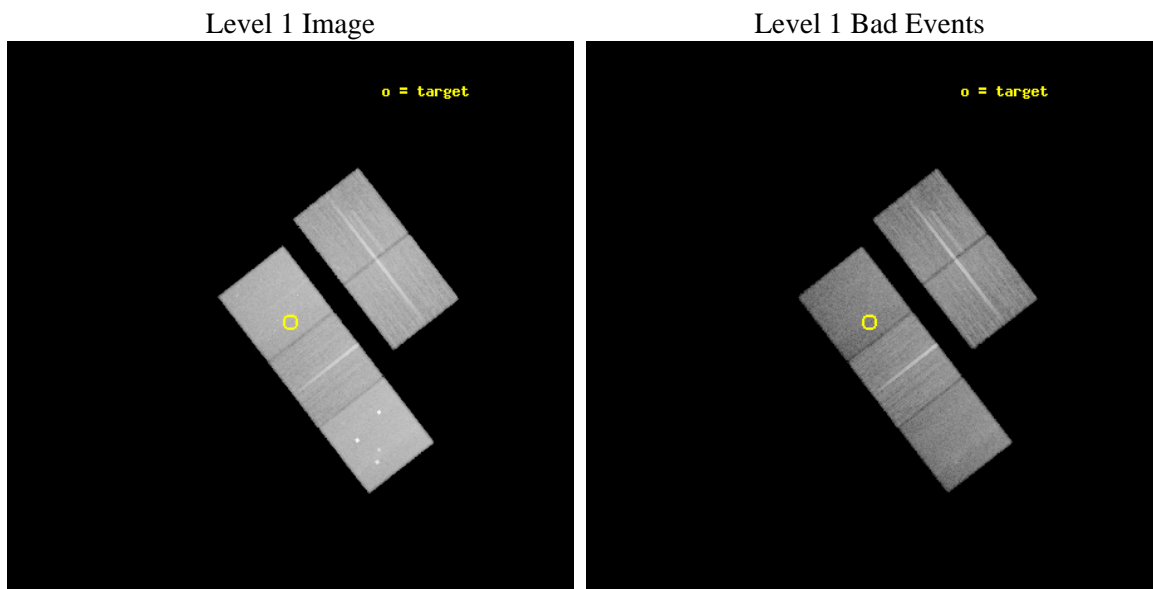
seq_num	500950	Sequence number
obs_id	9812	Observation id
title	The extreme late-time light curve of GRB 060729	Proposal title
observer	Dr. Dirk Grupe	Principal investigator
object	GRB 060729	Source name
dtcycle	0	
cycle	P	events from which exps? Prim/Second/Both
ra_targ	95.382917	Observer's specified target RA [deg]
dec_targ	-62.370139	Observer's specified target Dec [deg]
ra_nom	95.381798484249	Nominal RA [deg]
dec_nom	-62.374954842391	Nominal Dec [deg]
roll_nom	232.15563547216	Nominal Roll [deg]
revision	2	Processing version of data
ontime	26730.073299468	Sum of GTIs [s]
livetime	26380.825213416	Livetime [s]
ontime2	26726.768179119	Sum of GTIs [s]
ontime3	26723.66831857	Sum of GTIs [s]
ontime5	26730.032259464	Sum of GTIs [s]
ontime6	26729.991219461	Sum of GTIs [s]
ontime7	26730.073299468	Sum of GTIs [s]
l2events	296419	Number of level 2 events



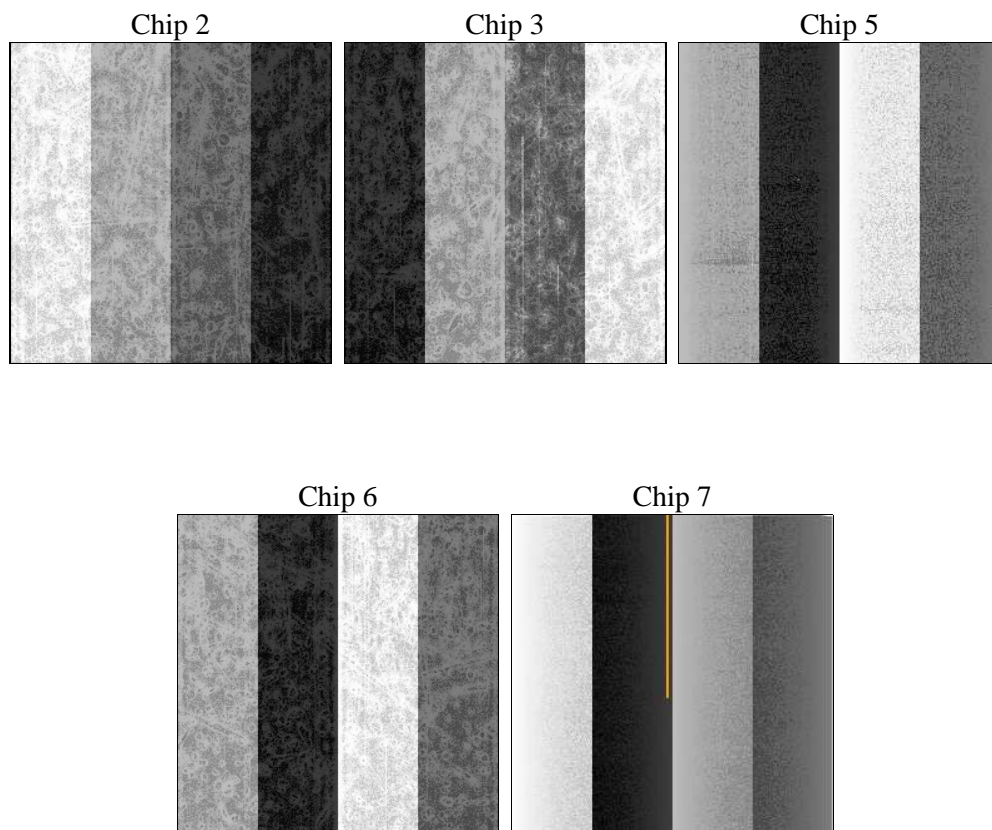
2 OBI

2.1 OBI

2.1.1 Images



2.1.2 Bias



2.1.3 Parameters

obi_num	0	Obi number	sched_exp_time	26661.975000	[s] Scheduled observation exposure time
ascdsver	8.4.4	Processing system revision	ontime	26730.073299468	Sum of GTIs [s]
caldbver	4.4.9	 	ontime2	26726.768179119	Sum of GTIs [s]
date	2012-05-14T01:22:23	Date and time of file creation	ontime3	26723.66831857	Sum of GTIs [s]
revision	2	Processing version of data	ontime5	26730.032259464	Sum of GTIs [s]
			ontime6	26729.991219461	Sum of GTIs [s]
			ontime7	26730.073299468	Sum of GTIs [s]
			l1events	1173293	Number of level 1 events

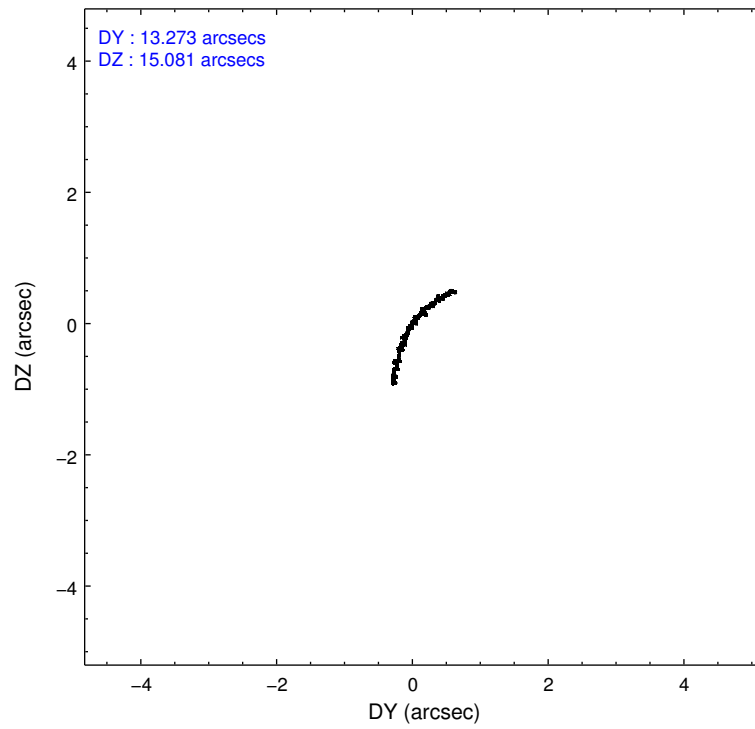
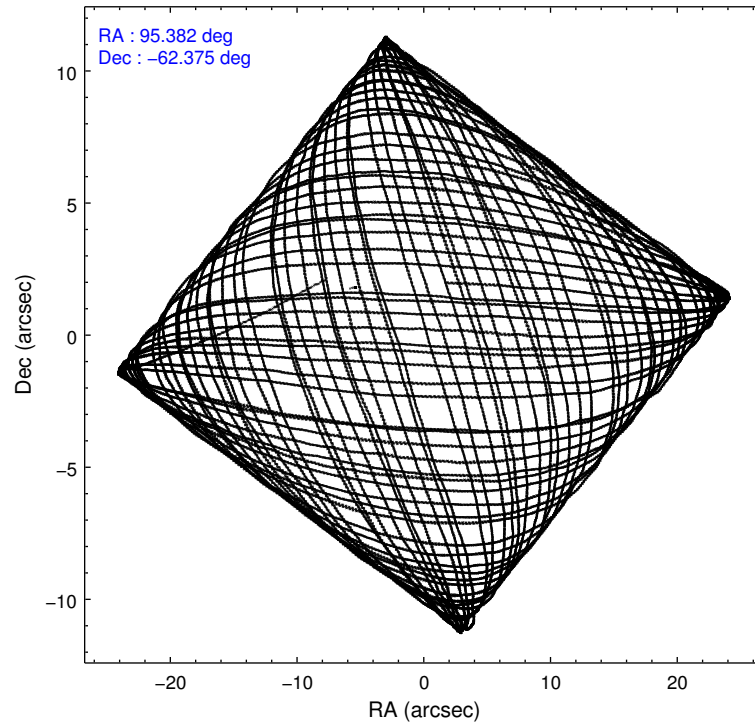
2.1.4 Events

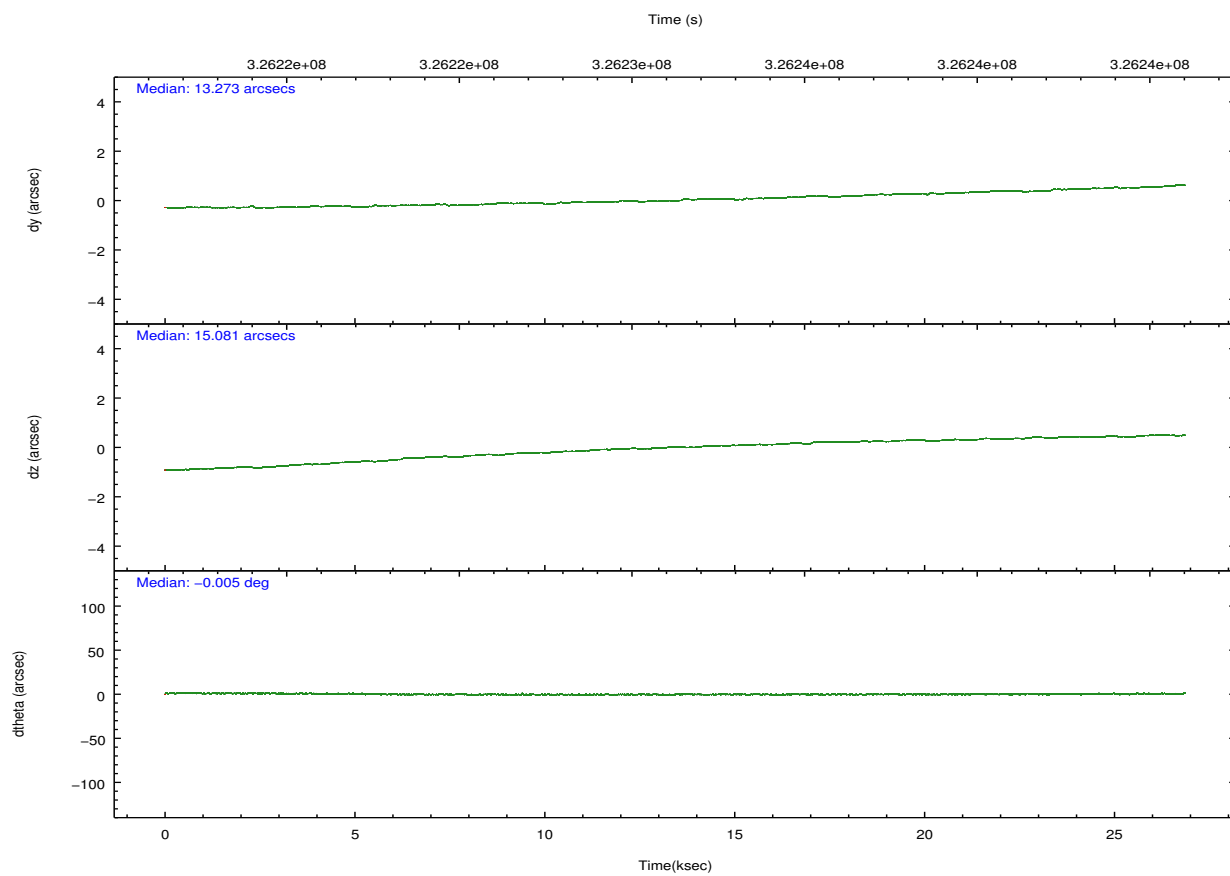
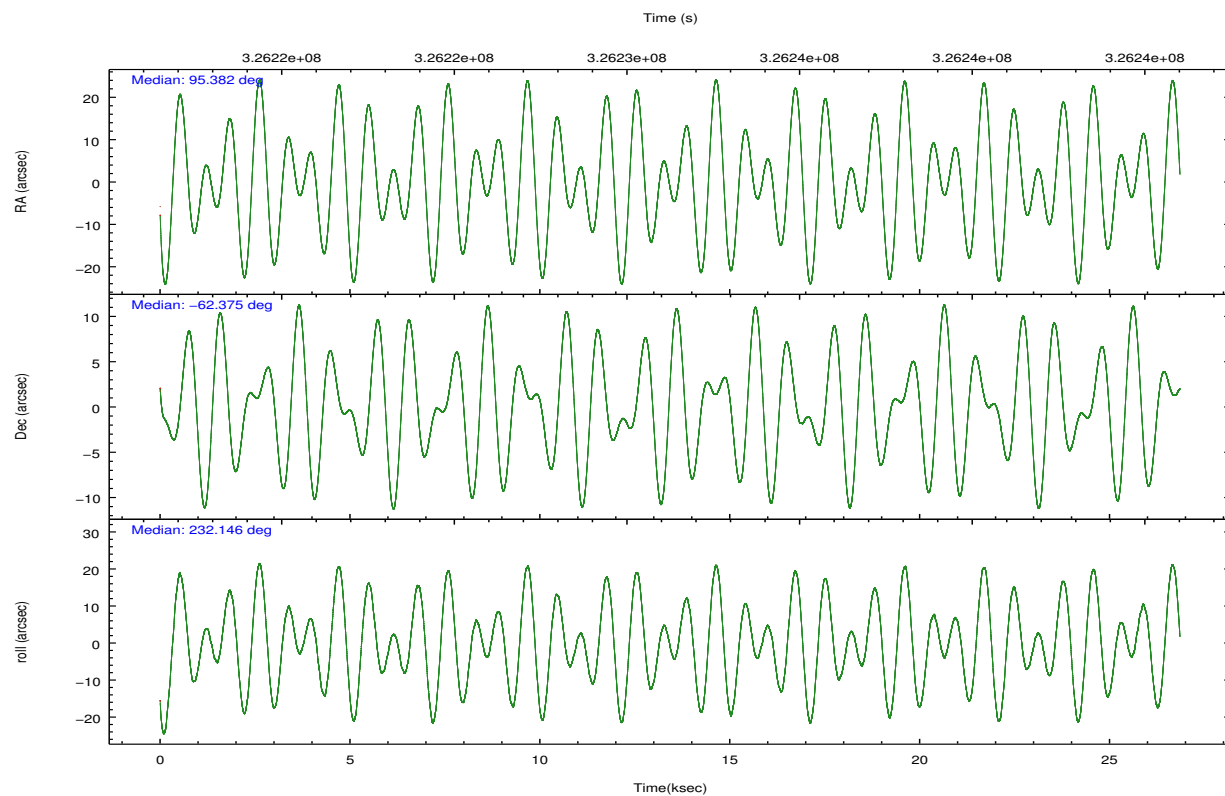
	ccd 2	ccd 3	ccd 5	ccd 6	ccd 7		ccd 2	ccd 3	ccd 5	ccd 6	ccd 7
level 1 events	218519	202448	301401	213122	237803	grade 0 events	7215	6963	21891	7656	10522
rejected events	198007	182733	148485	191113	128858		3%	3%	7%	3%	4%
rejected %	90%	90%	49%	89%	54%	grade 1 events	132	111	670	97	282
							0%	0%	0%	0%	0%
						grade 2 events	5092	4343	42598	4872	22240
							2%	2%	14%	2%	9%
						grade 3 events	2180	2260	6301	2337	10010
							0%	1%	2%	1%	4%
						grade 4 events	2211	2198	6086	2365	9949
							1%	1%	2%	1%	4%
						grade 5 events	6863	8502	23493	8734	25192
							3%	4%	7%	4%	10%
						grade 6 events	3818	3954	76072	4782	56251
							1%	1%	25%	2%	23%
						grade 7 events	191008	174117	124290	182279	103357
							87%	86%	41%	85%	43%

2.2 Compared Parameters

Parameter	Planned	Actual	Parameter	Planned	Actual
Instrument	ACIS	ACIS	Obspar format version number	7	7
Detector	ACIS-23567	ACIS-23567	Obspar file type	PREDICTED	ACTUAL
Grating	NONE	NONE	Obspar update status	NONE	UPDATED
Data mode	VFAINT	VFAINT	Number of optional ACIS chips dropped	0	0
Observation mode	POINTING	POINTING	On-chip summing requested	N	N
[deg] Pointing RA	95.389043	95.38179848424858	Subarray requested	NONE	NONE
[deg] Pointing Dec	-62.347823	-62.37495484239108	Alternating exposures requested	N	N
[deg] Pointing Roll	232.005427	232.1556354721594	[s] Primary exposure time	0.000000	3.1
[mm] SIM focus pos	-0.684267	-0.6828225247311905			
[mm] SIM defocus	0	0.001444936568705701			
[mm] SIM translation stage pos	-190.132523	-190.1400660498719			
[mm] SIM translation stage offset	0	0.00754346686406393			
[s] Observation start time (MET)	326218016.184000	326217070.07198			
Observation start date	2008-05-03T16:05:51	2008-05-03T15:51:10			
[s] Observation end time (MET)	326244678.184000	326244909.07334			
Observation end date	2008-05-03T23:30:13	2008-05-03T23:35:09			
Read mode	TIMED	TIMED			

2.3 Aspect



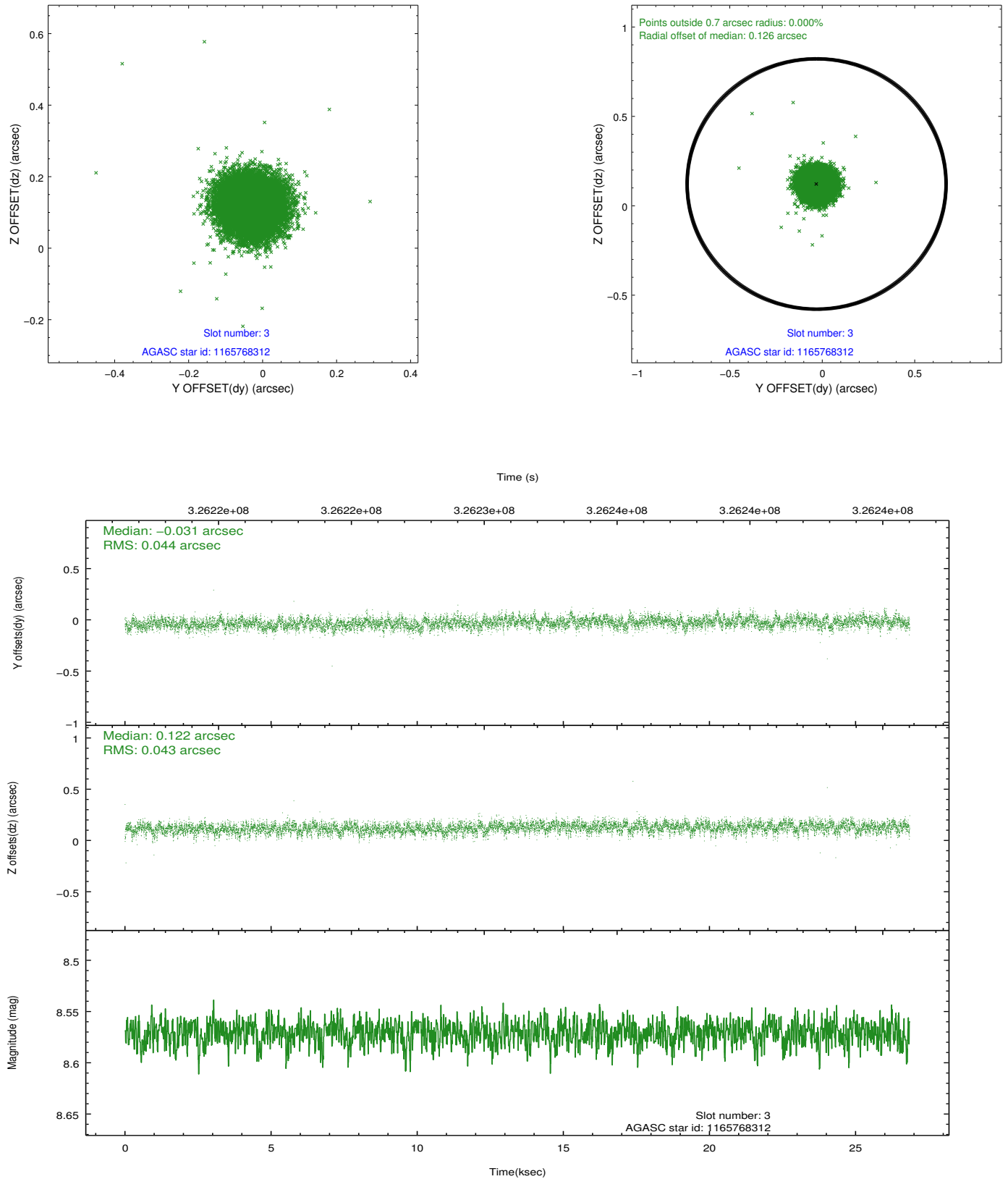


Slot Statistics

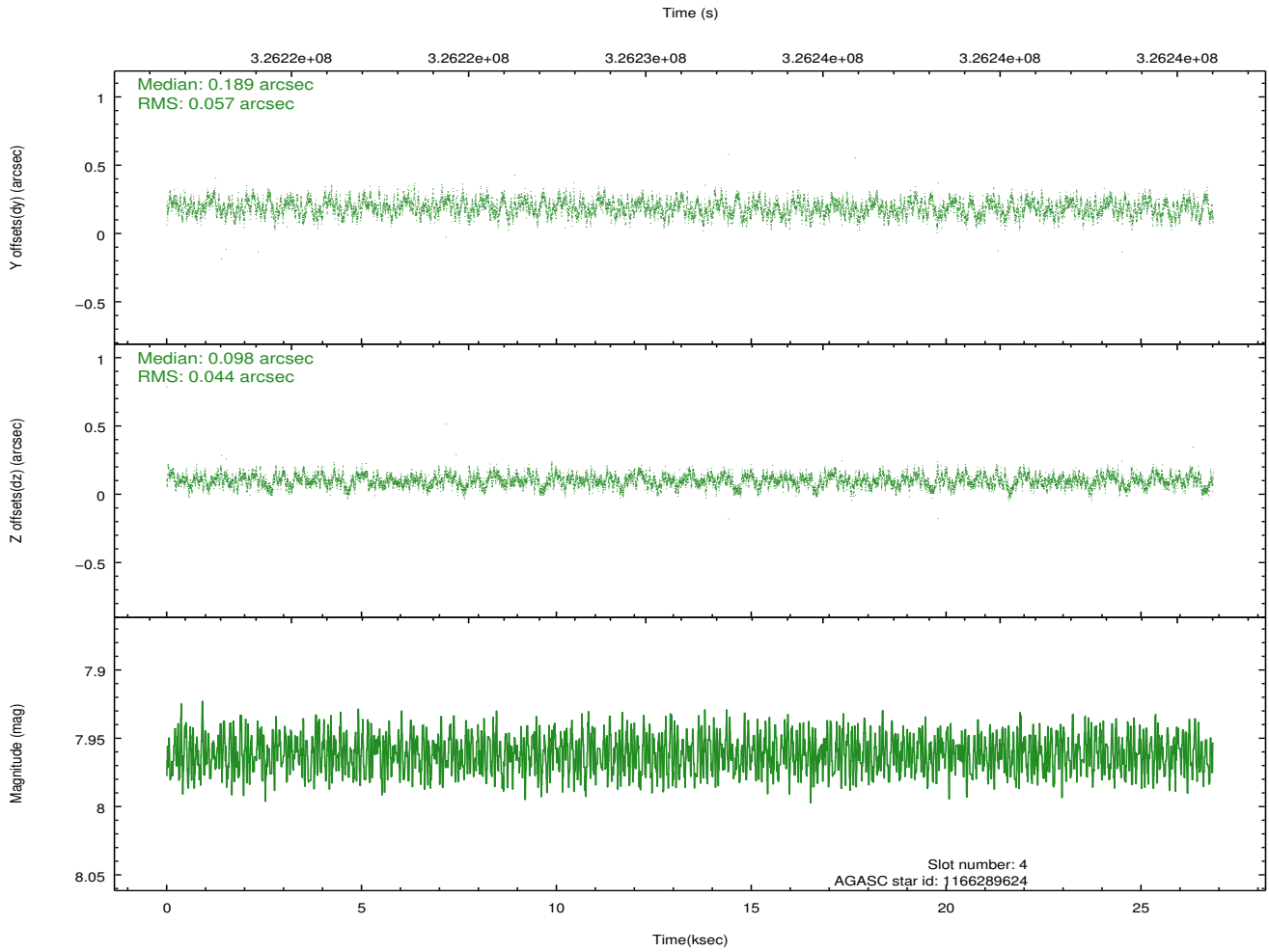
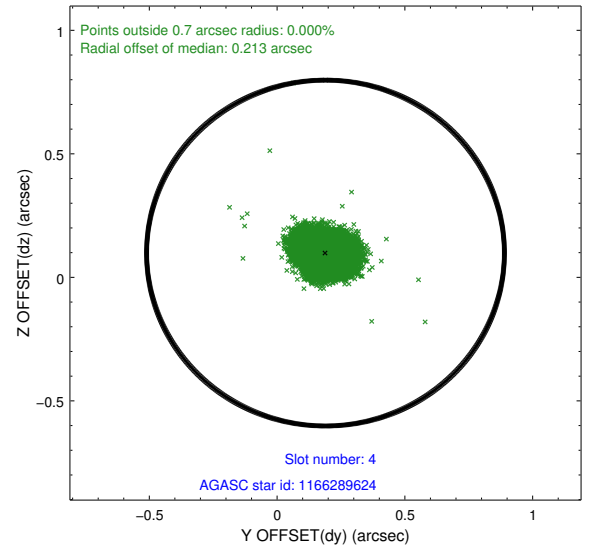
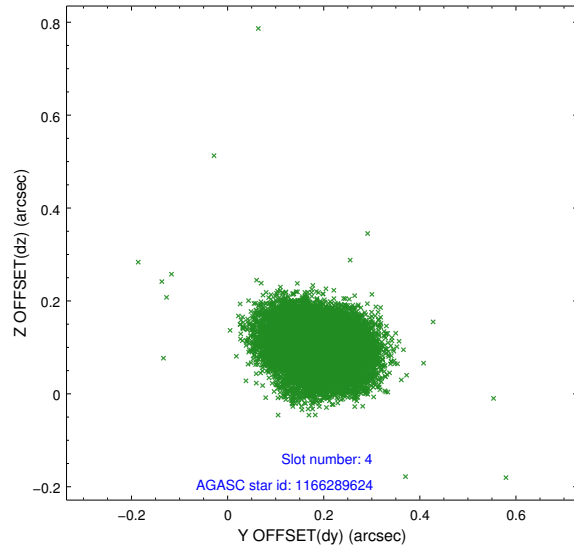
slot	status	id	mag	n_pts	med_dy	med_dz	dr1	dr2	ra	dec	mean_y	mean_z
0	FID	ACIS-S-2	6.86	6550	-0.048	0.007	0.013	0.022	0.000000	0.000000	-766.28	-1736.38
1	FID	ACIS-S-4	6.95	6549	0.127	0.022	0.009	0.016	0.000000	0.000000	2147.10	172.06
2	FID	ACIS-S-5	6.98	6550	-0.112	-0.020	0.013	0.020	0.000000	0.000000	-1819.08	165.75
3	GUIDE	1165768312	8.57	13093	-0.031	0.122	0.065	0.104	95.468462	-61.602862	-2196.67	-1543.70
4	GUIDE	1166289624	7.96	13095	0.189	0.098	0.077	0.120	95.229966	-62.354097	181.94	-194.96
5	GUIDE	1166290504	9.15	13089	-0.034	-0.074	0.094	0.152	94.421217	-62.304320	883.29	-1364.89
6	GUIDE	1166293432	7.19	13026	-0.050	-0.028	0.065	0.105	95.278960	-62.189330	-335.36	-496.69
7	GUIDE	1166293888	7.03	13098	-0.078	-0.124	0.068	0.114	96.952580	-62.149930	-2155.12	1652.89

2.4 Star Slots

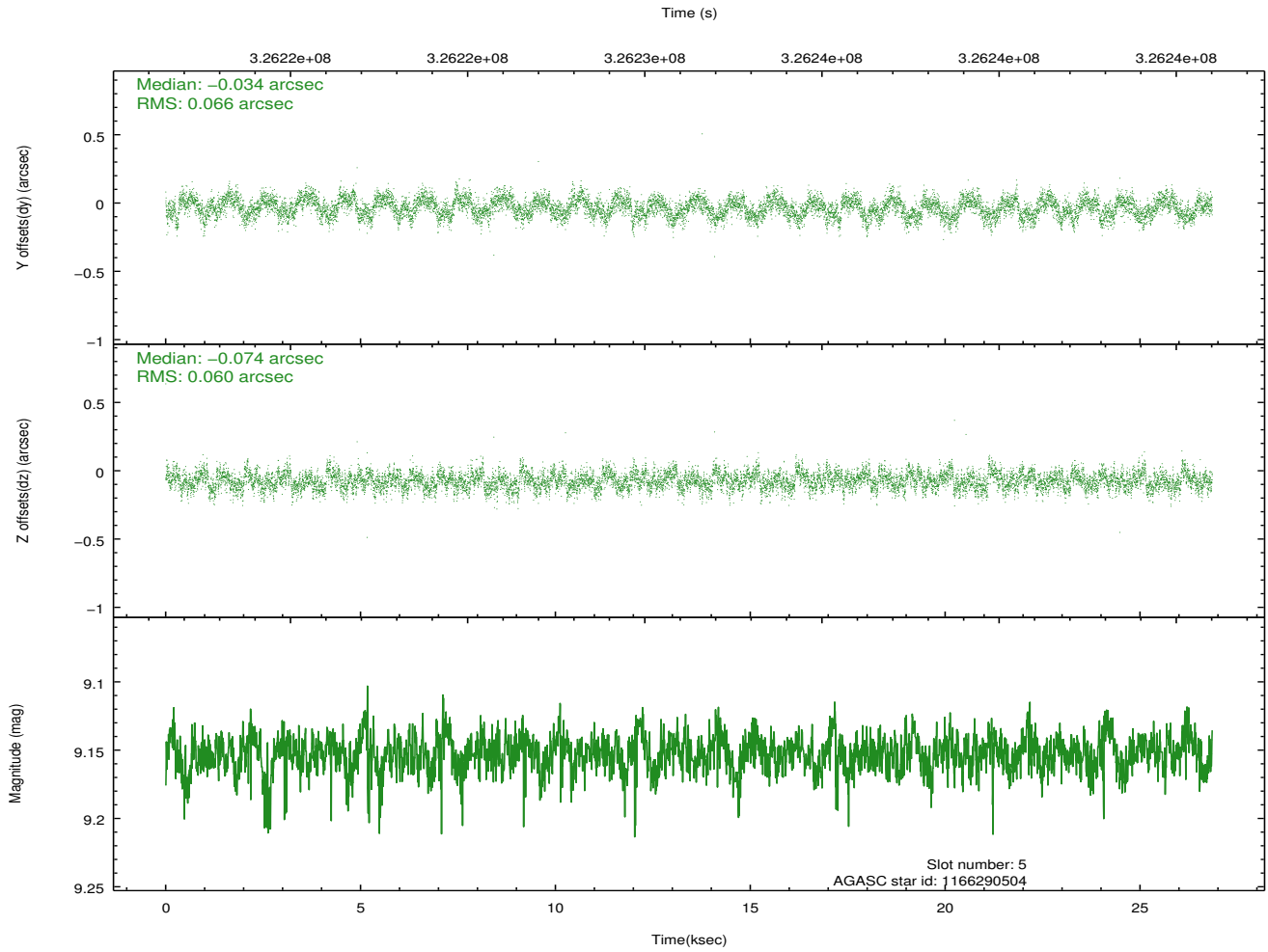
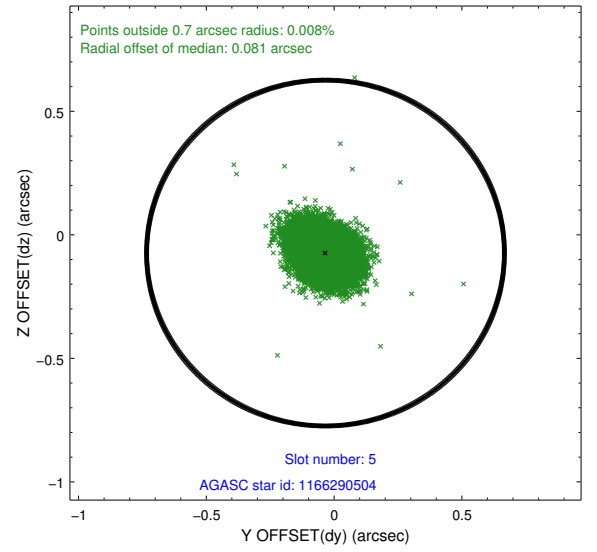
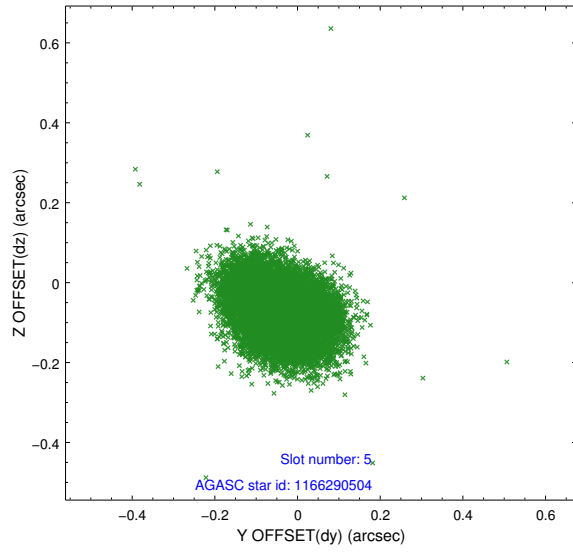
2.4.1 Slot 3



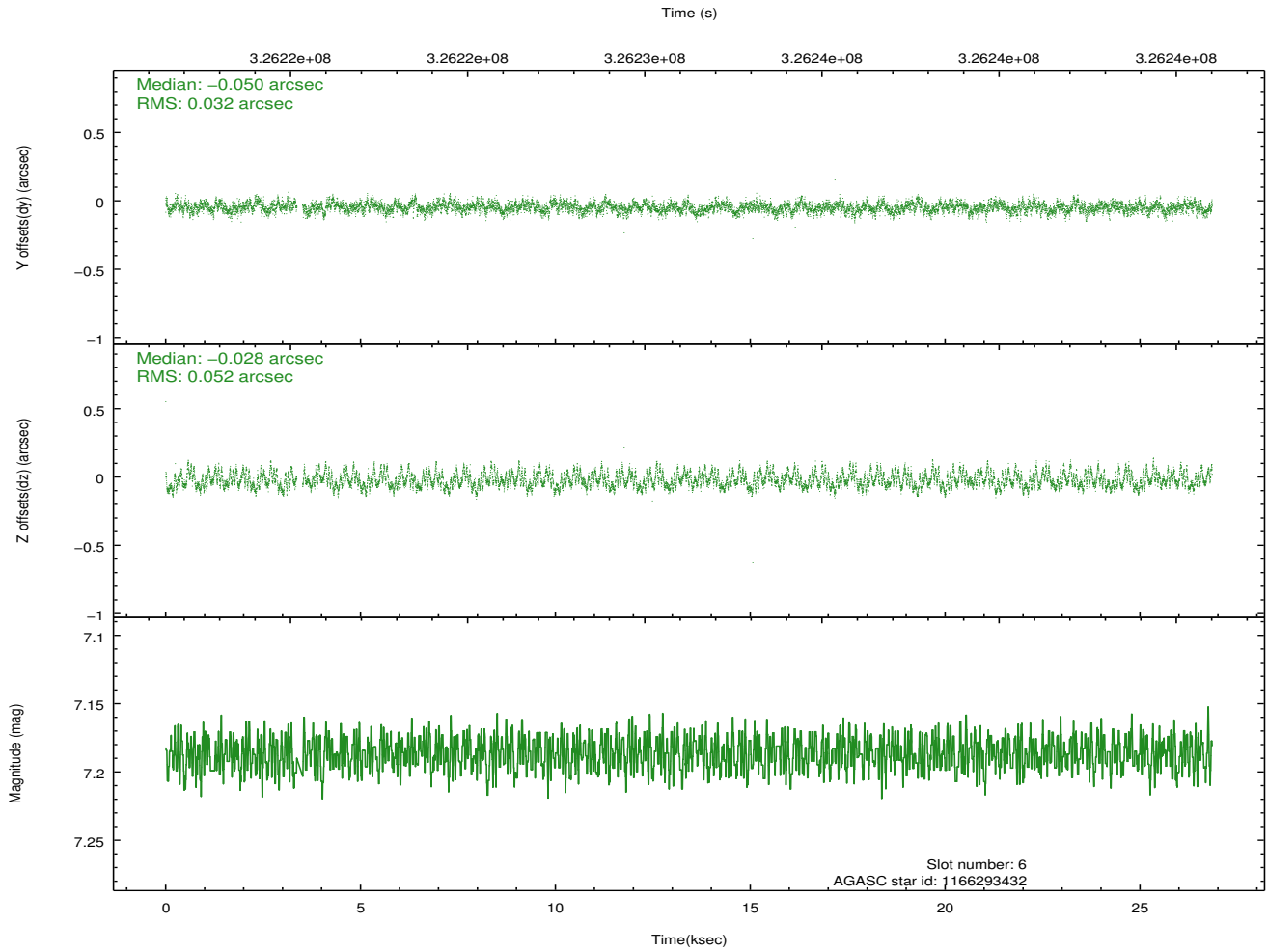
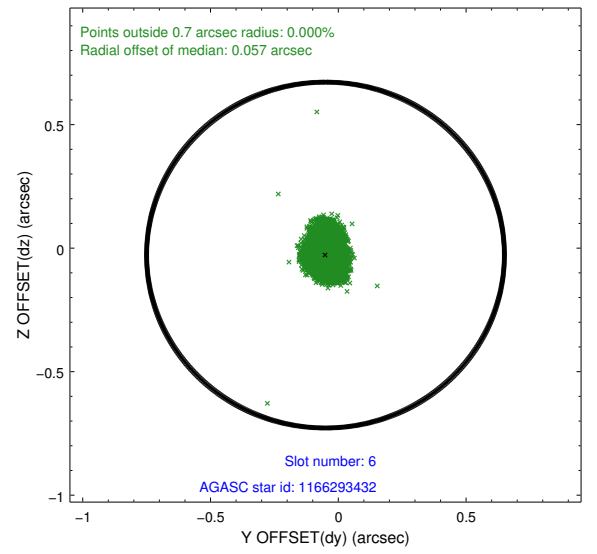
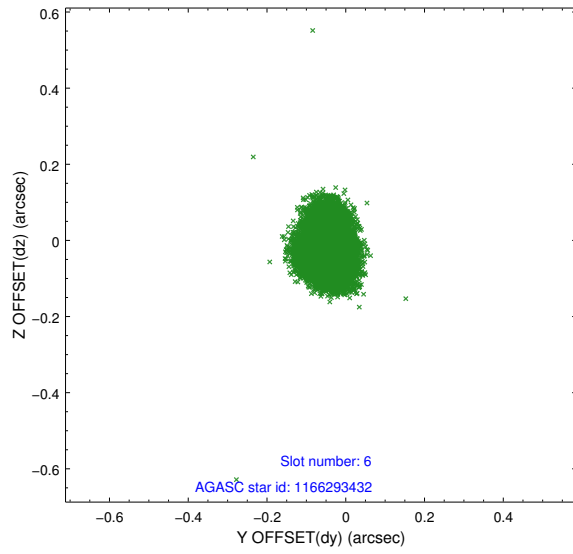
2.4.2 Slot 4



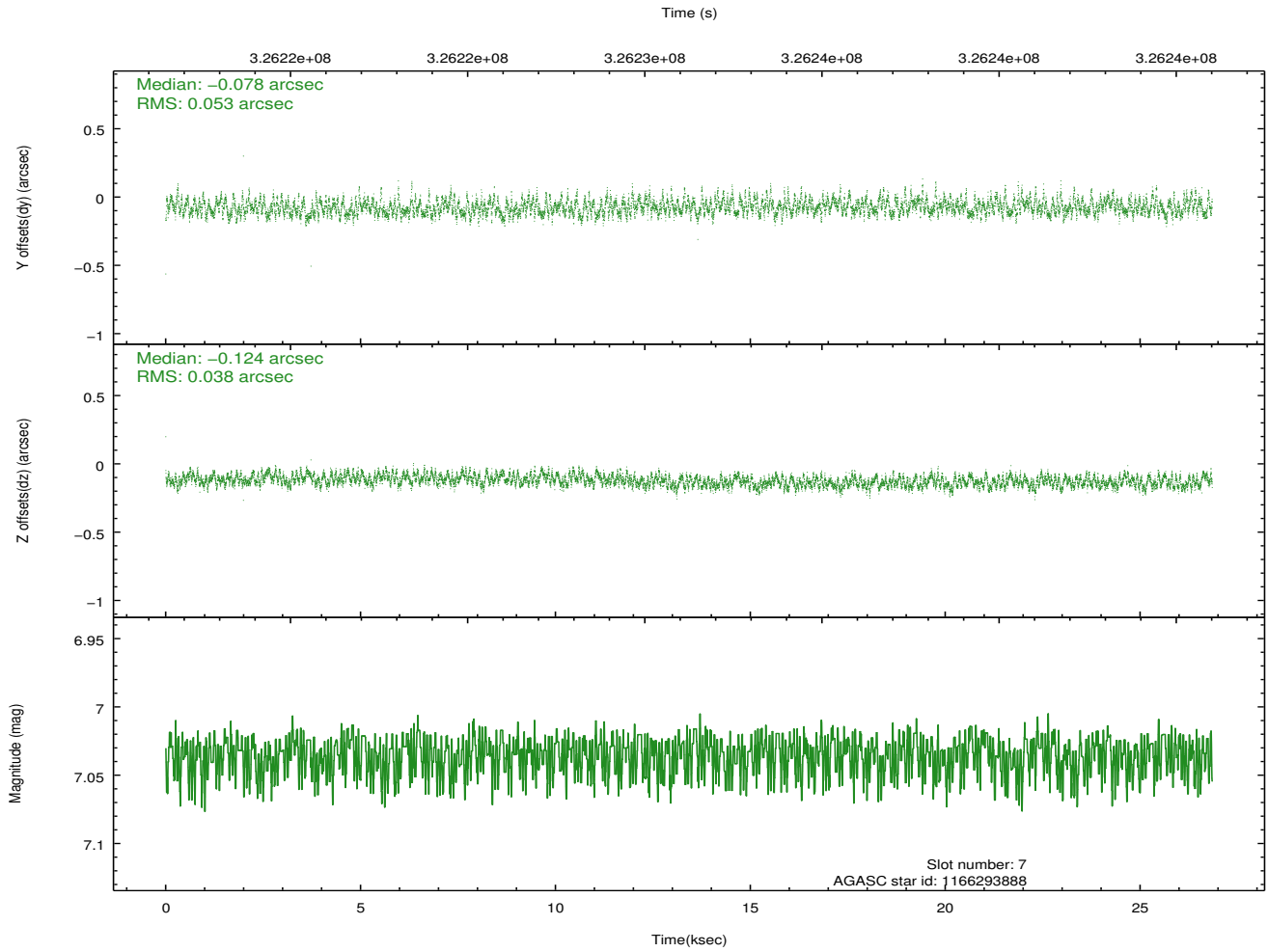
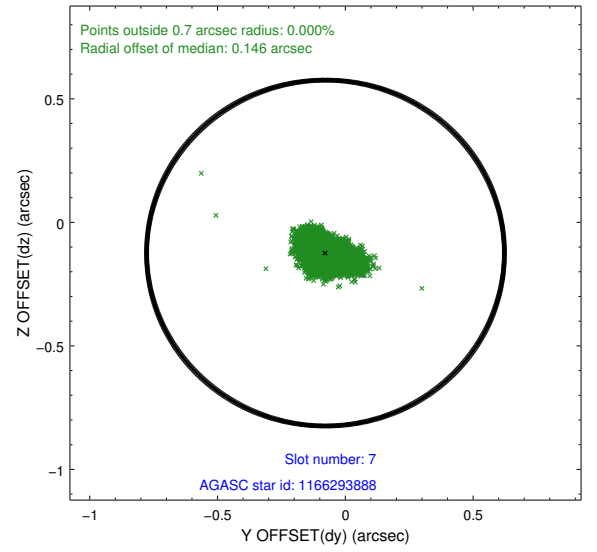
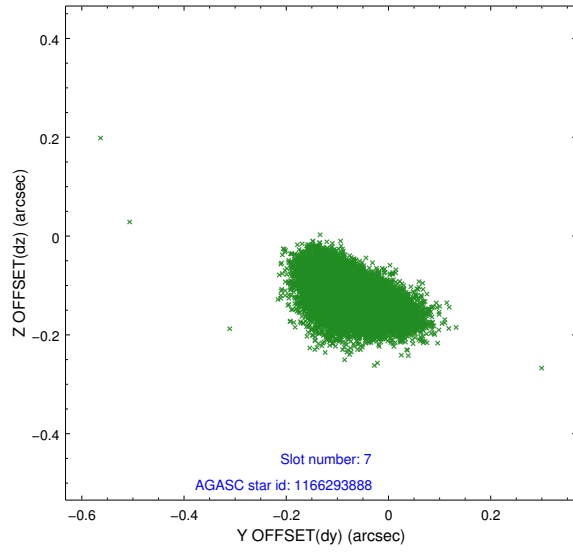
2.4.3 Slot 5



2.4.4 Slot 6

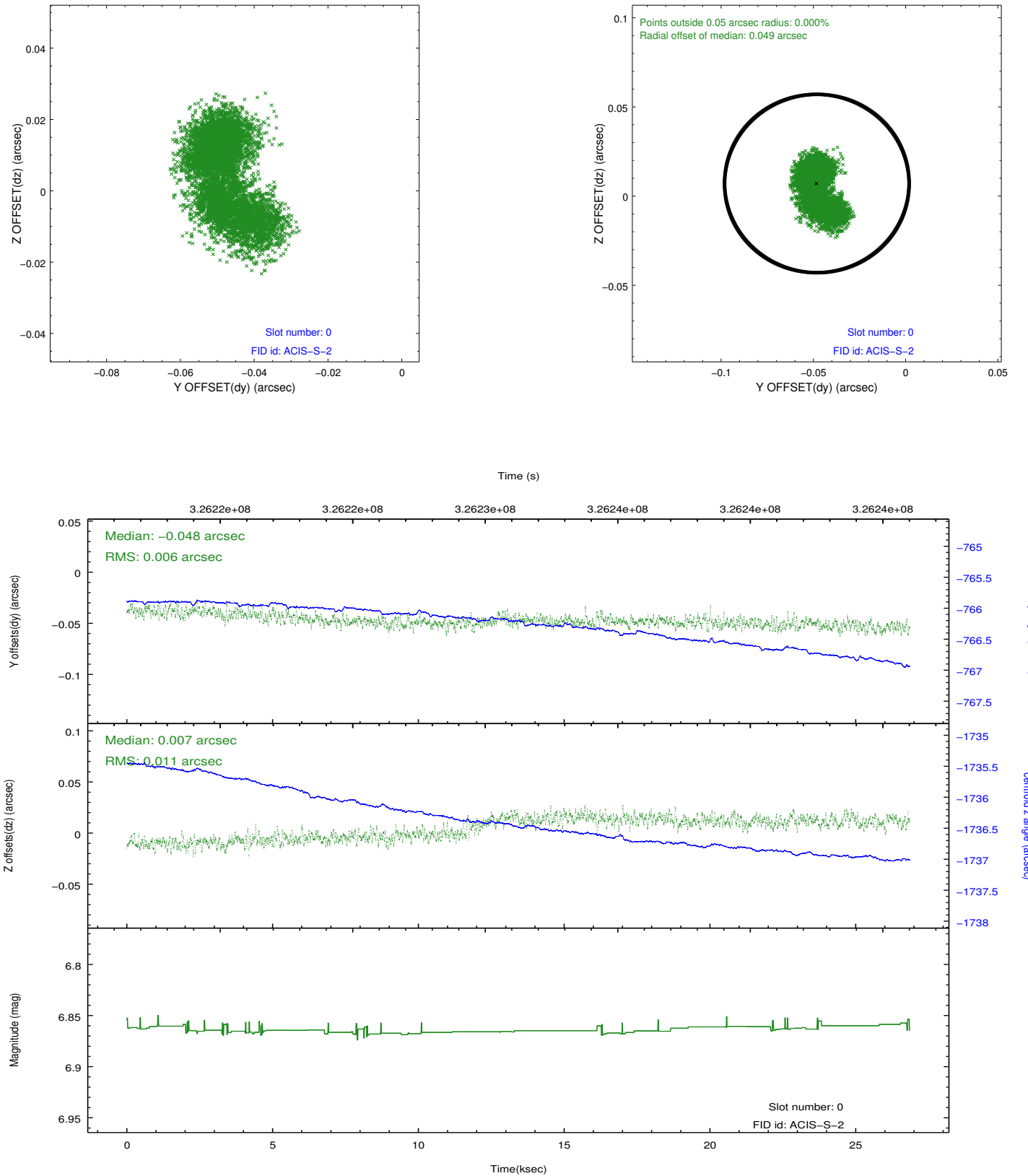


2.4.5 Slot 7

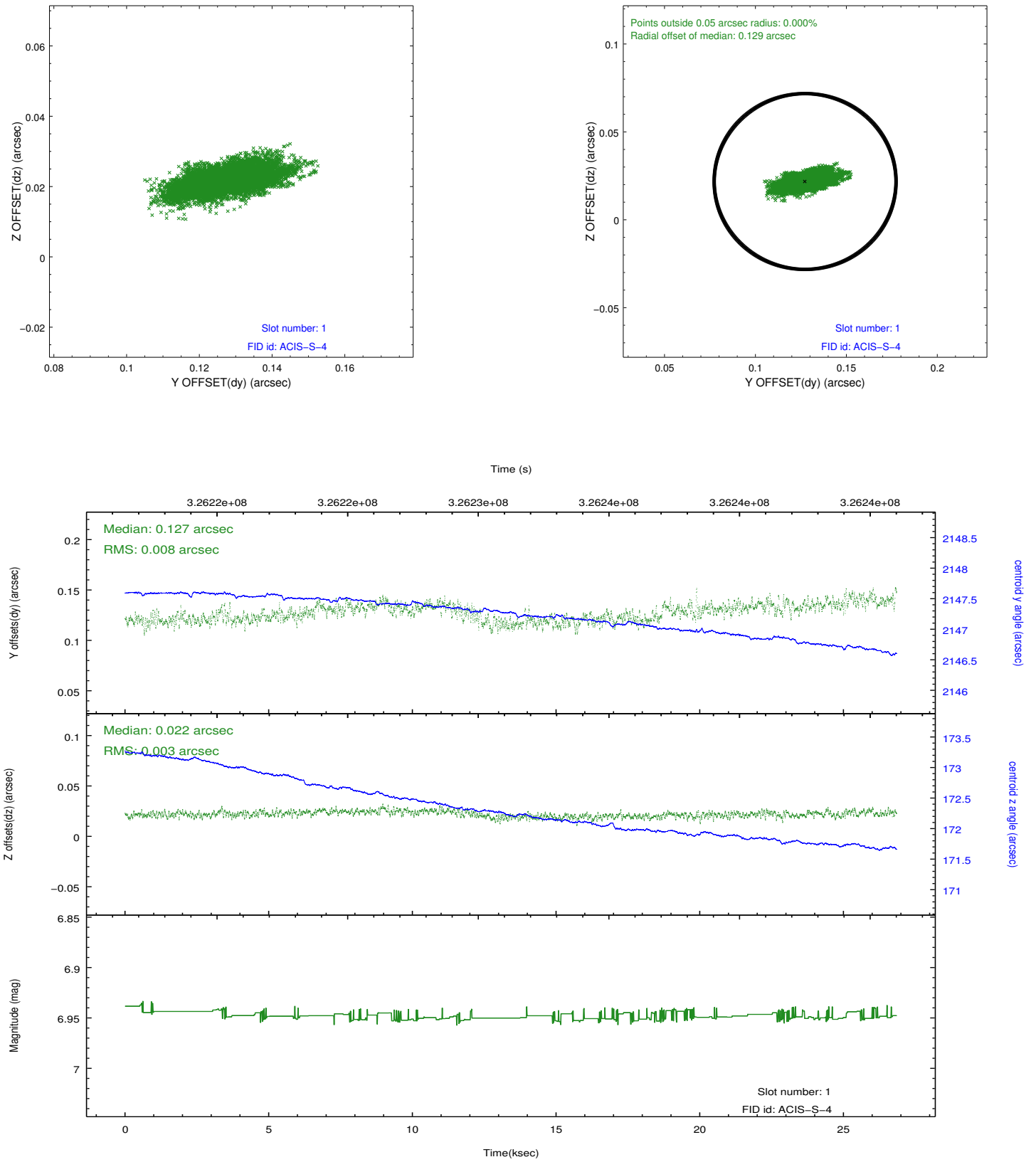


2.5 FID Slots

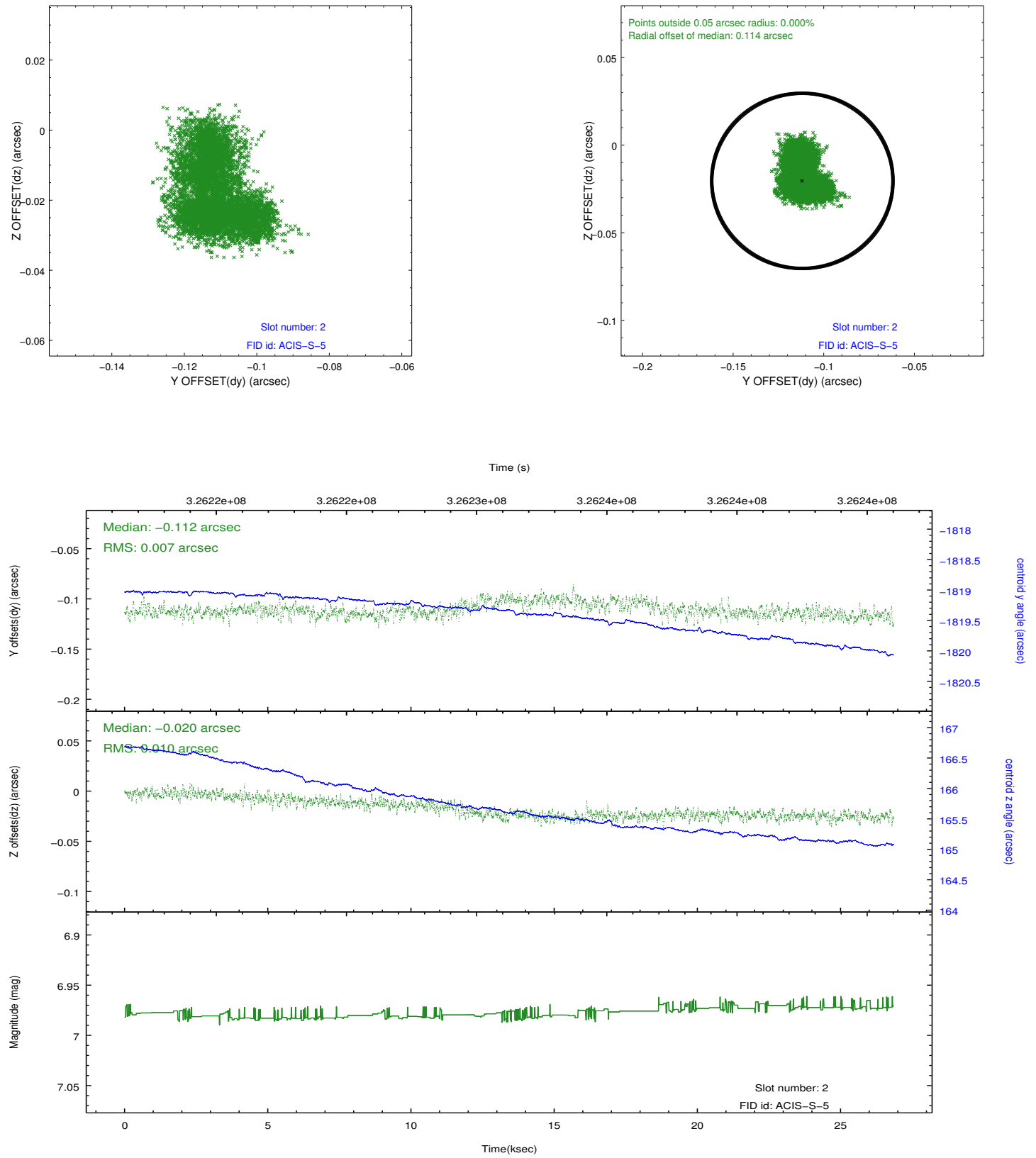
2.5.1 Slot 0



2.5.2 Slot 1



2.5.3 Slot 2



A Summary

A.1 Status

V&V Scientist	Jen Lauer
V&V Date (YYYY-MM-DD)	2012.05.15
V&V Edition	1
V&V Disposition and Status	OK
V&V Charge Time	26.7313002

A.2 Comments