

V&V Reference Report

L2 ASCDS Version : 8.4.4

Observation 9803 - L2 Version 2
Chandra X-Ray Center

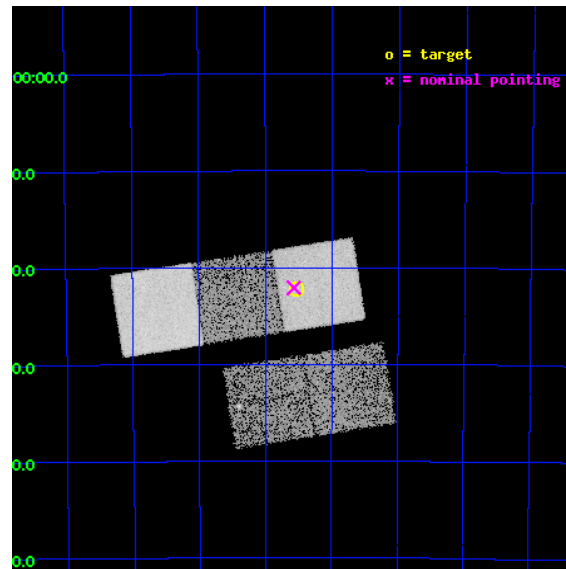
L2 Processing Date : May 7 2012

Contents

1	Front	2
2	OBI	3
2.1	OBI	3
2.1.1	Images	3
2.1.2	Bias	3
2.1.3	Parameters	4
2.1.4	Events	4
2.2	Compared Parameters	5
2.3	Aspect	6
2.4	Star Slots	9
2.4.1	Slot 3	9
2.4.2	Slot 4	10
2.4.3	Slot 5	11
2.4.4	Slot 6	12
2.4.5	Slot 7	13
2.5	FID Slots	14
2.5.1	Slot 0	14
2.5.2	Slot 1	15
2.5.3	Slot 2	16
A	Summary	17
A.1	Status	17
A.2	Comments	17

1 Front

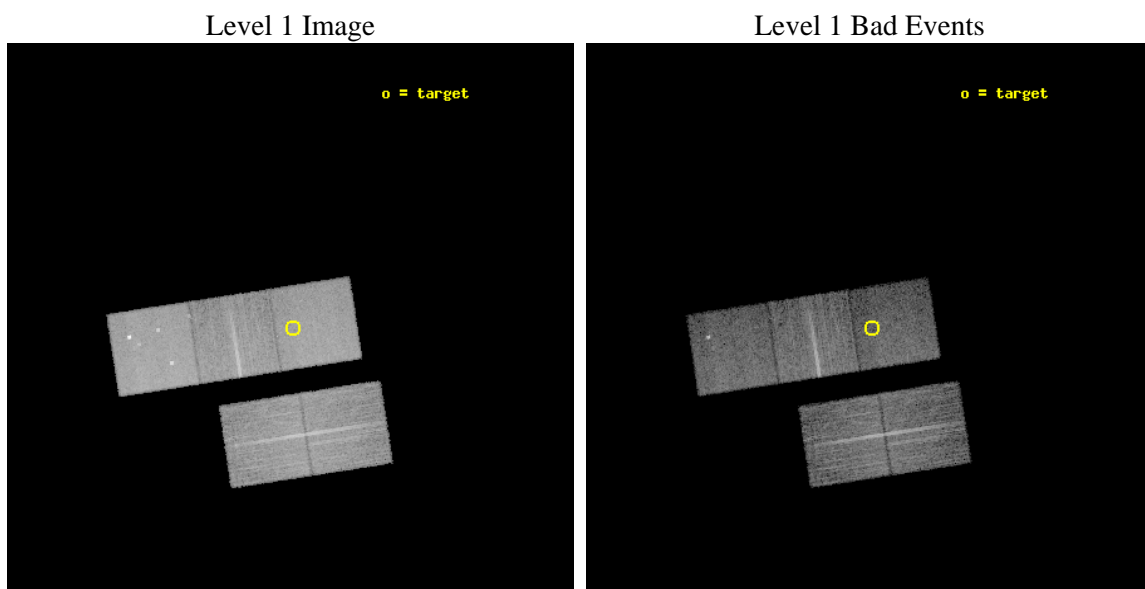
seq_num	500949	Sequence number
obs_id	9803	Observation id
title	The extreme late-time light curve of GRB 060729	Proposal title
observer	Dr. Dirk Grupe	Principal investigator
object	GRB 060729	Source name
dtcycle	0	
cycle	P	events from which exps? Prim/Second/Both
ra_targ	95.382917	Observer's specified target RA [deg]
dec_targ	-62.370139	Observer's specified target Dec [deg]
ra_nom	95.392541067895	Nominal RA [deg]
dec_nom	-62.368212301547	Nominal Dec [deg]
roll_nom	351.13080167705	Nominal Roll [deg]
revision	2	Processing version of data
ontime	10118.40007782	Sum of GTIs [s]
livetime	9986.1957317453	Livetime [s]
ontime2	10115.259117544	Sum of GTIs [s]
ontime3	10115.259107411	Sum of GTIs [s]
ontime5	10118.40007782	Sum of GTIs [s]
ontime6	10118.40007782	Sum of GTIs [s]
ontime7	10118.40007782	Sum of GTIs [s]
l2events	116765	Number of level 2 events



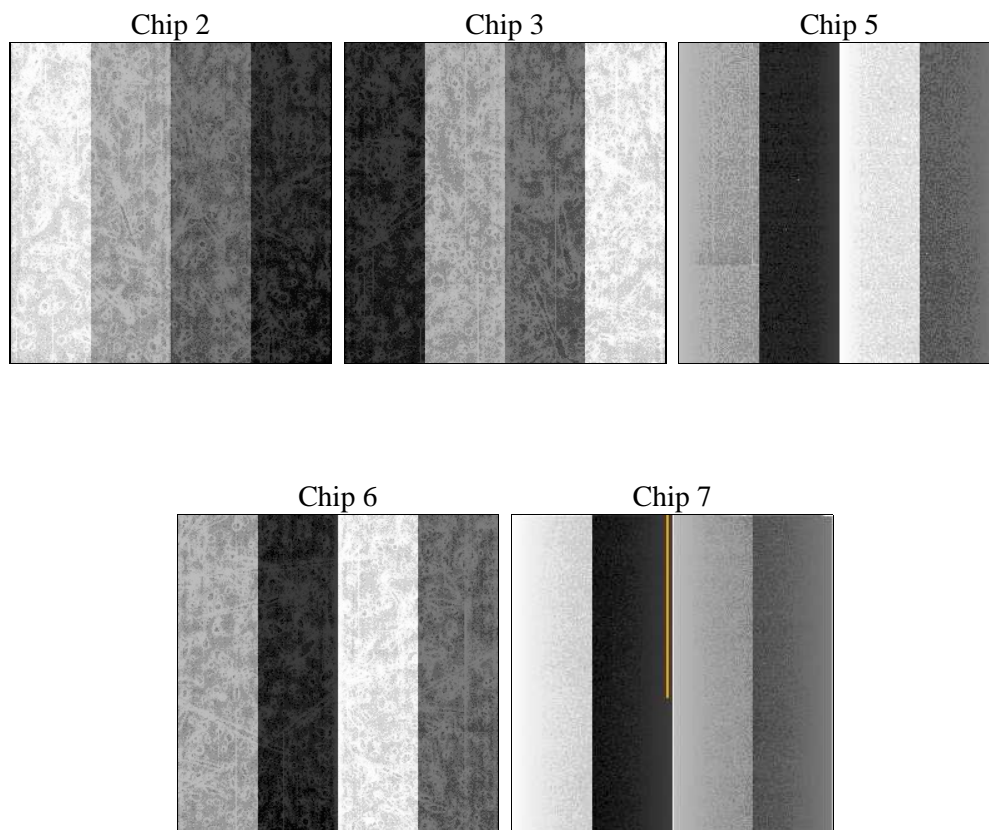
2 OBI

2.1 OBI

2.1.1 Images



2.1.2 Bias



2.1.3 Parameters

obi_num	0	Obi number	sched_exp_time	10000.000000	[s] Scheduled observation exposure time
ascdsver	8.4.4	Processing system revision	ontime	10118.40007782	Sum of GTIs [s]
caldsver	4.4.9	 	ontime2	10115.259117544	Sum of GTIs [s]
date	2012-05-07T15:30:21	Date and time of file creation	ontime3	10115.259107411	Sum of GTIs [s]
revision	2	Processing version of data	ontime5	10118.40007782	Sum of GTIs [s]
			ontime6	10118.40007782	Sum of GTIs [s]
			ontime7	10118.40007782	Sum of GTIs [s]
			l1events	492053	Number of level 1 events

2.1.4 Events

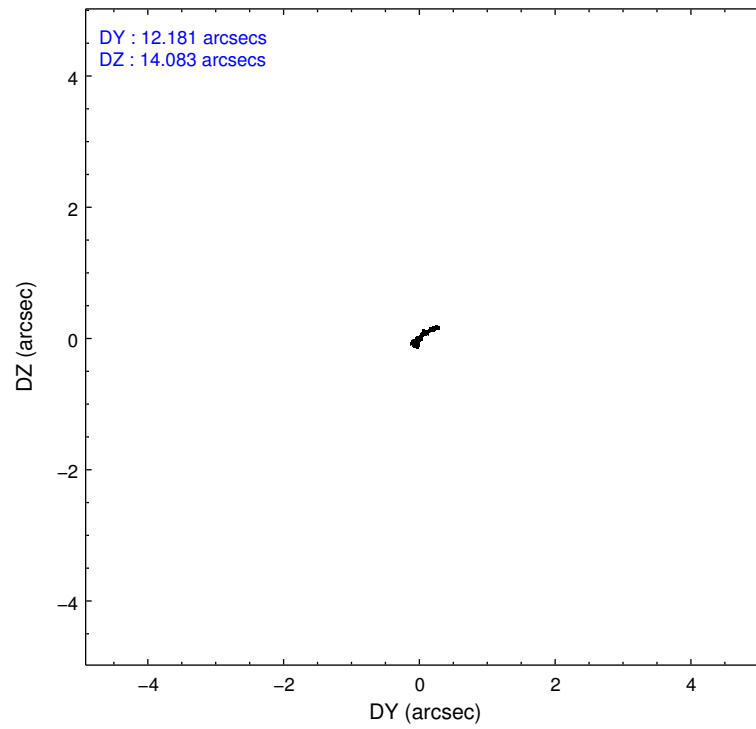
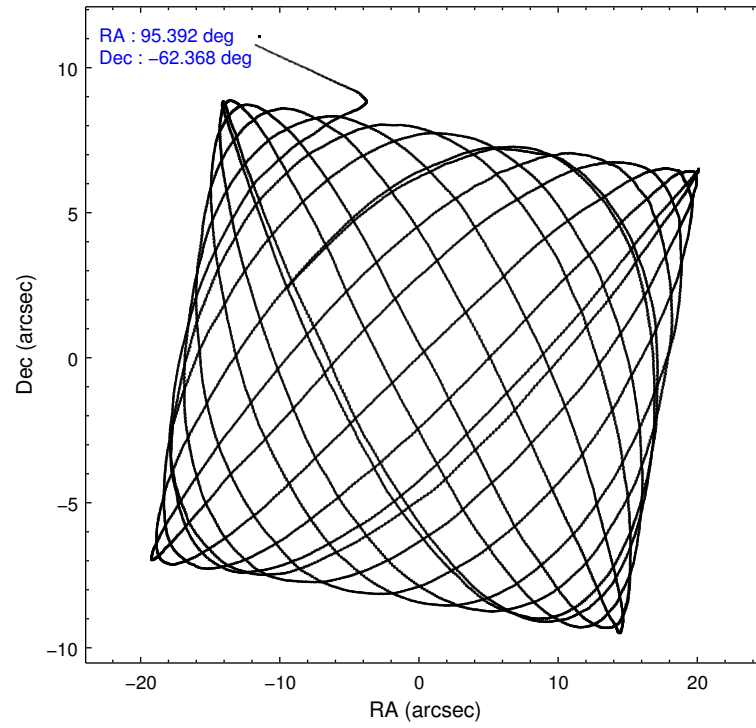
	ccd 2	ccd 3	ccd 5	ccd 6	ccd 7
level 1 events	89512	84637	127255	90507	100142
rejected events	81328	77129	66768	81904	57192
rejected %	90%	91%	52%	90%	57%

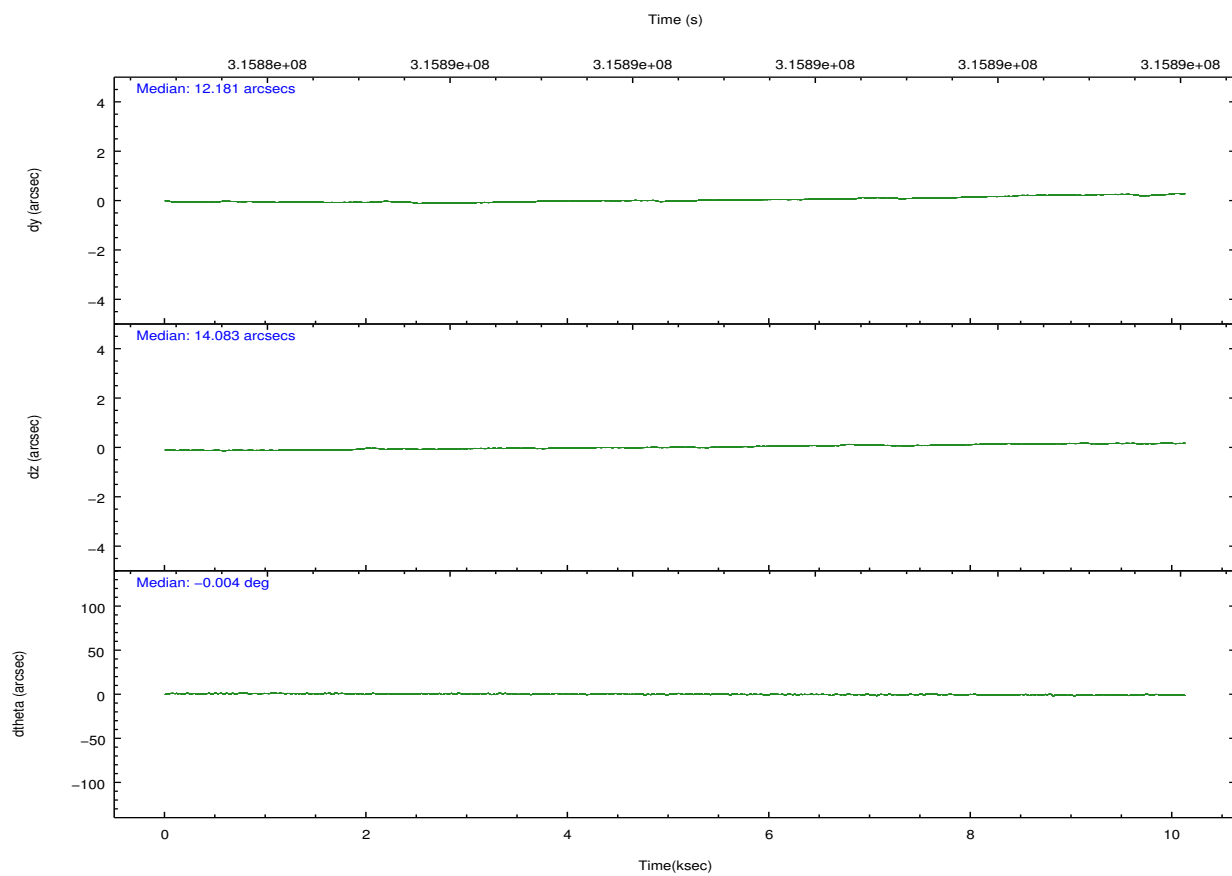
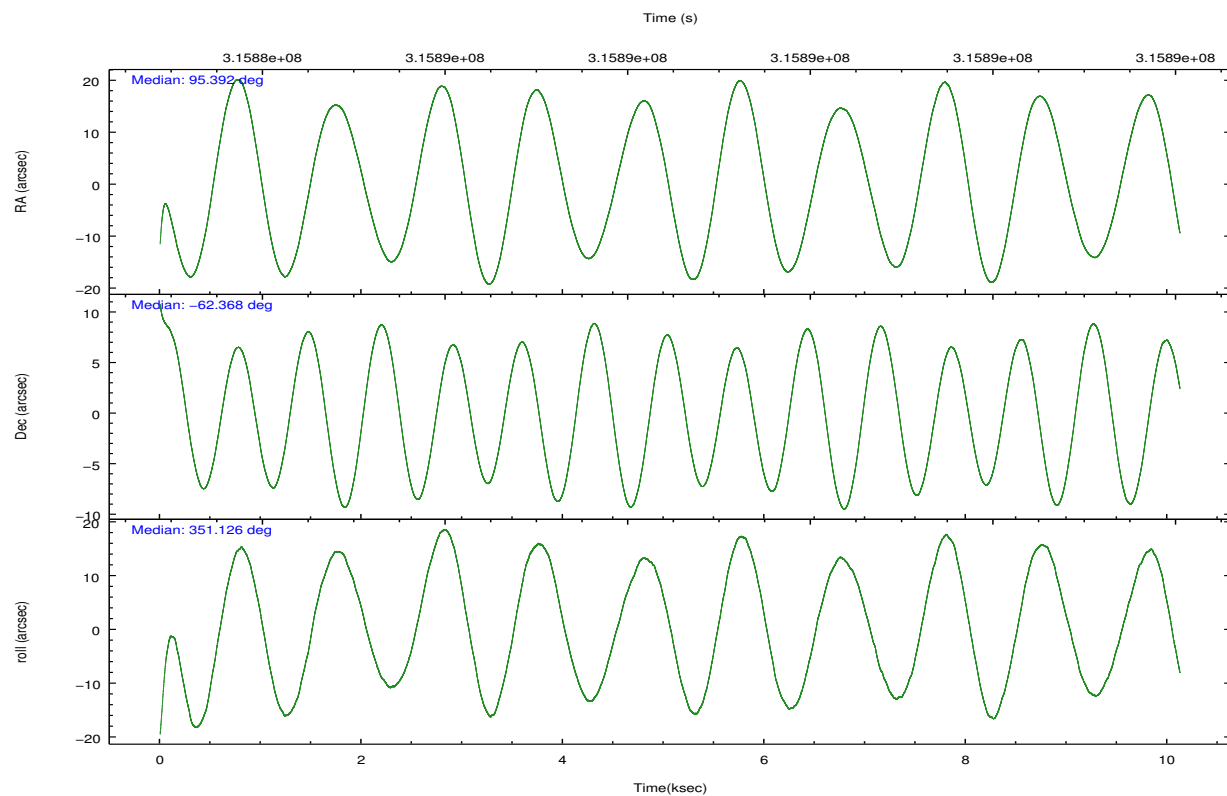
	ccd 2	ccd 3	ccd 5	ccd 6	ccd 7
grade 0 events	3146	2755	7623	3203	4241
	3%	3%	5%	3%	4%
grade 1 events	44	56	288	37	139
	0%	0%	0%	0%	0%
grade 2 events	2046	1743	19225	1968	9291
	2%	2%	15%	2%	9%
grade 3 events	944	910	2559	1037	4157
	1%	1%	2%	1%	4%
grade 4 events	937	924	2376	966	4153
	1%	1%	1%	1%	4%
grade 5 events	2775	3475	9720	3574	10599
	3%	4%	7%	3%	10%
grade 6 events	1582	1638	32365	1929	23661
	1%	1%	25%	2%	23%
grade 7 events	78038	73136	53099	77793	43901
	87%	86%	41%	85%	43%

2.2 Compared Parameters

Parameter	Planned	Actual	Parameter	Planned	Actual
Instrument	ACIS	ACIS	Obspar format version number	7	7
Detector	ACIS-23567	ACIS-23567	Obspar file type	PREDICTED	ACTUAL
Grating	NONE	NONE	Obspar update status	NONE	UPDATED
Data mode	VFAINT	VFAINT	Number of optional ACIS chips dropped	0	0
Observation mode	POINTING	POINTING	On-chip summing requested	N	N
[deg] Pointing RA	95.337836	95.39254106789507	Subarray requested	NONE	NONE
[deg] Pointing Dec	-62.378441	-62.36821230154695	Alternating exposures requested	N	N
[deg] Pointing Roll	350.925718	351.13080167705	[s] Primary exposure time	0.000000	3.1
[s] Window start time (MET)	312854465.184000	312854465.184000			
[s] Window stop time (MET)	320716865.184000	320716865.184000			
[mm] SIM focus pos	-0.684267	-0.6828225247311905			
[mm] SIM defocus	0	0.001444936568705701			
[mm] SIM translation stage pos	-190.132523	-190.1425803651734			
[mm] SIM translation stage offset	0	0.01005778216563158			
[s] Observation start time (MET)	315883523.184000	315882253.3823			
Observation start date	2008-01-05T01:24:18	2008-01-05T01:04:13			
[s] Observation end time (MET)	315893523.184000	315894199.24538			
Observation end date	2008-01-05T04:10:58	2008-01-05T04:23:19			
Read mode	TIMED	TIMED			

2.3 Aspect



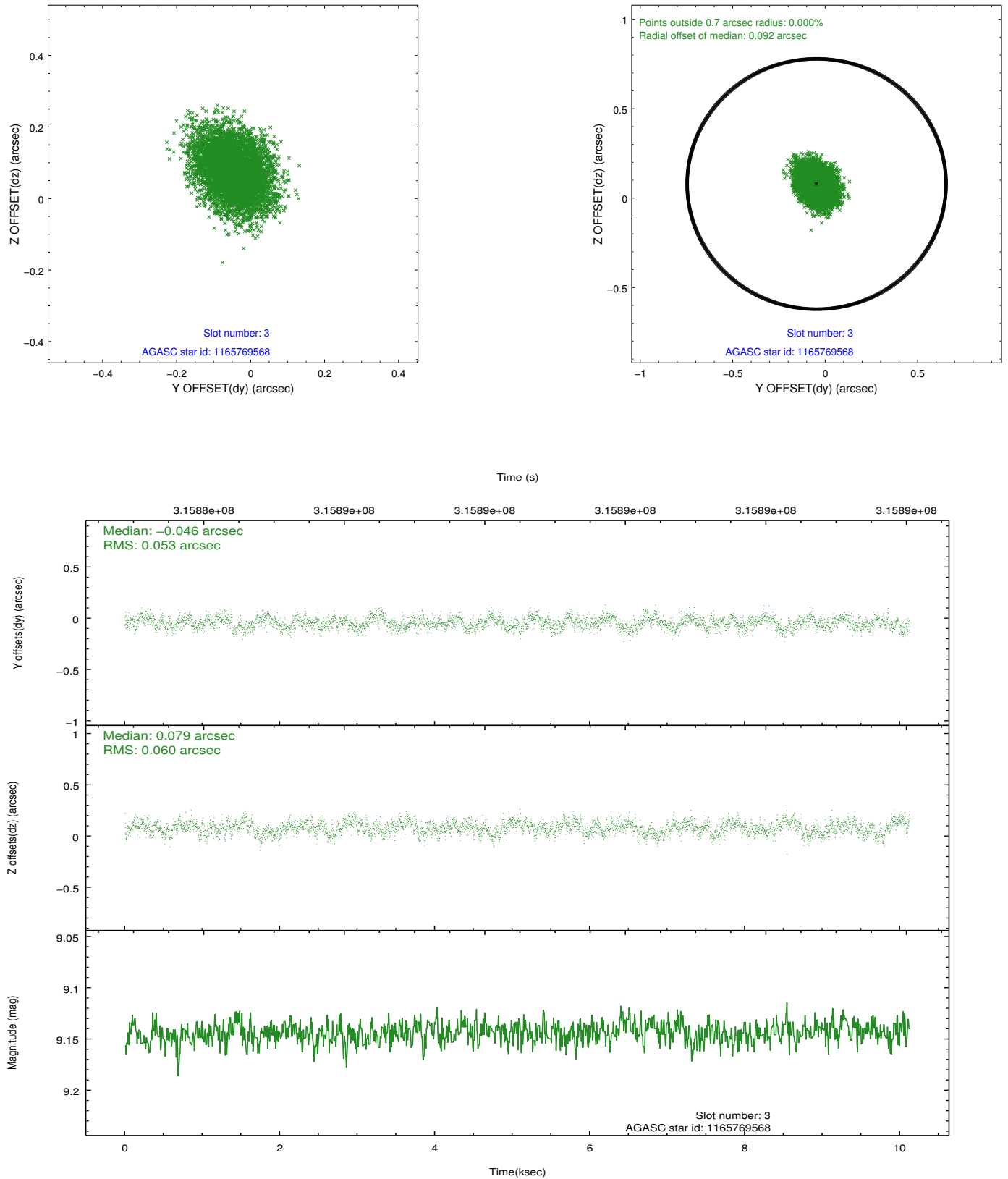


Slot Statistics

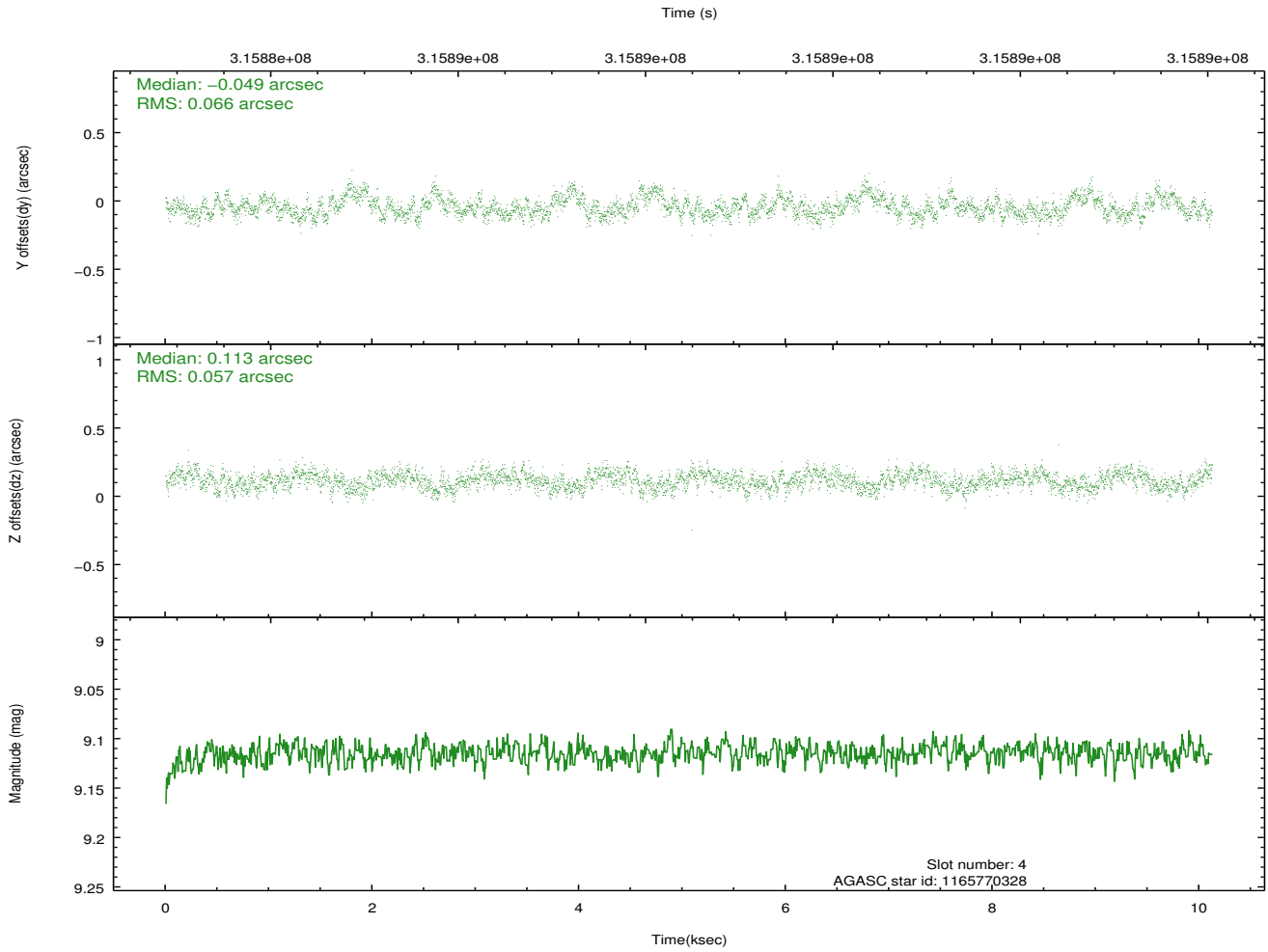
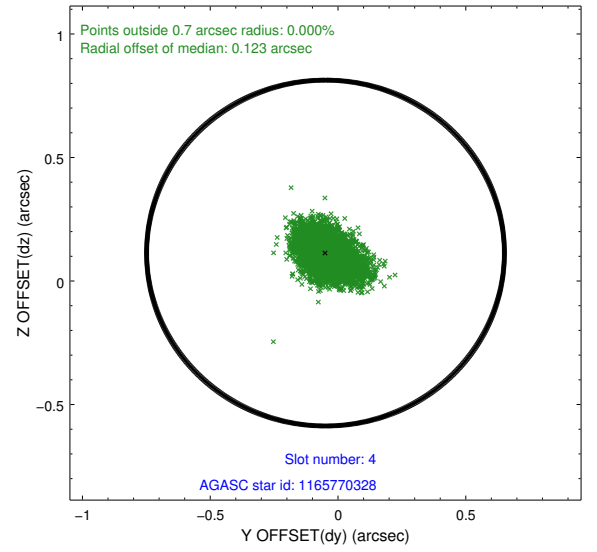
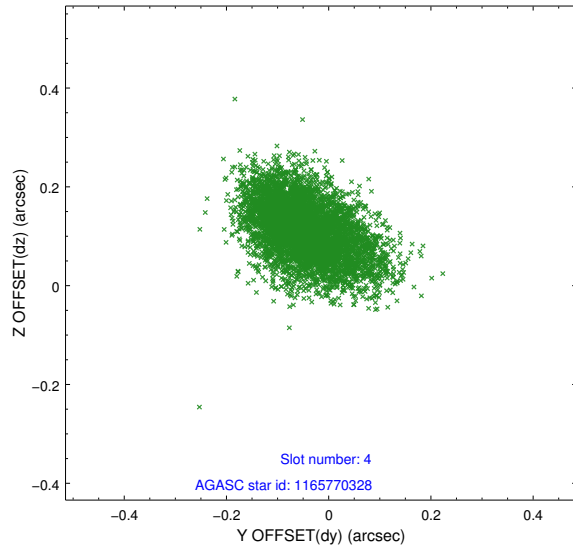
slot	status	id	mag	n_pts	med_dy	med_dz	dr1	dr2	ra	dec	mean_y	mean_z
0	FID	ACIS-S-2	7.09	2470	-0.038	-0.044	0.006	0.011	0.000000	0.000000	-765.14	-1735.45
1	FID	ACIS-S-4	7.19	2470	0.134	0.030	0.007	0.013	0.000000	0.000000	2148.06	172.58
2	FID	ACIS-S-5	7.23	2470	-0.127	0.023	0.007	0.012	0.000000	0.000000	-1817.41	166.82
3	GUIDE	1165769568	9.14	4936	-0.046	0.079	0.086	0.139	94.966799	-61.821220	-938.92	1879.58
4	GUIDE	1165770328	9.12	4930	-0.049	0.113	0.091	0.153	94.916512	-61.741093	-1070.73	2150.62
5	GUIDE	1166288232	8.45	4937	-0.014	-0.085	0.086	0.141	96.353495	-62.422658	1698.64	97.67
6	GUIDE	1166289624	7.96	4936	0.048	-0.209	0.061	0.097	95.229966	-62.354097	-190.97	57.80
7	GUIDE	1166282184	9.44	4926	0.052	0.117	0.152	0.242	96.401638	-62.167622	1648.45	1017.31

2.4 Star Slots

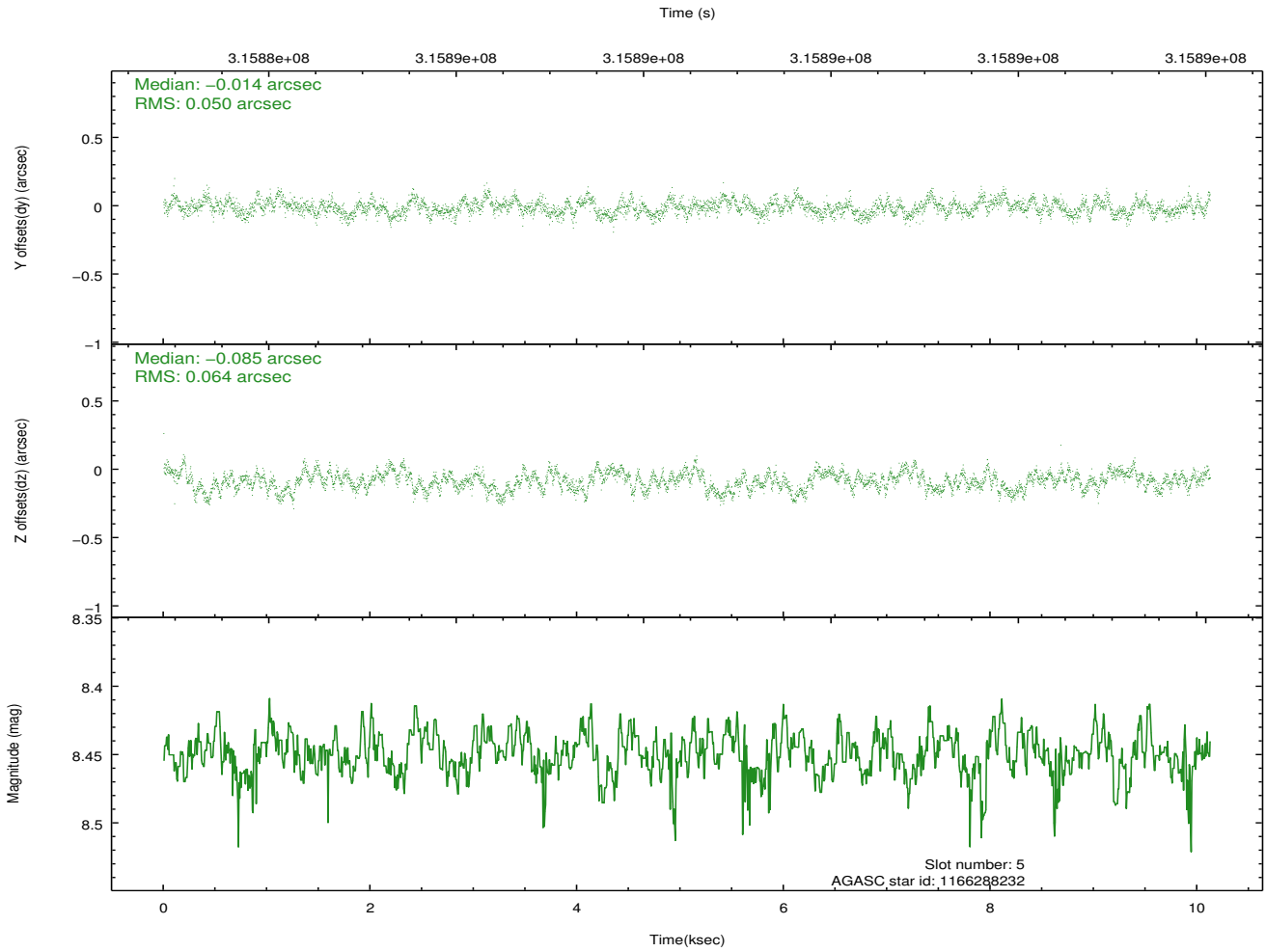
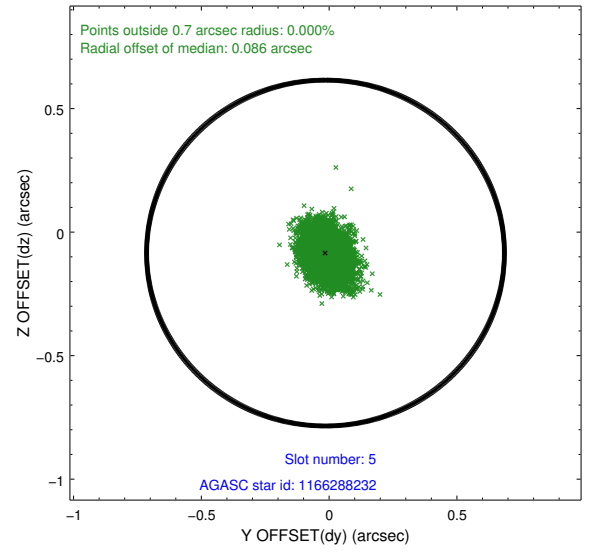
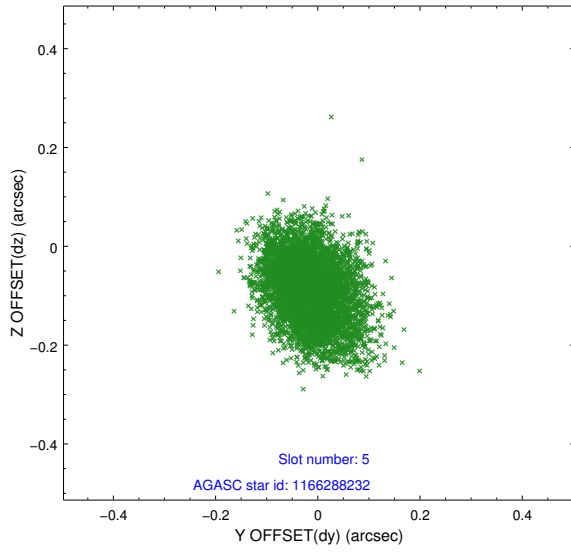
2.4.1 Slot 3



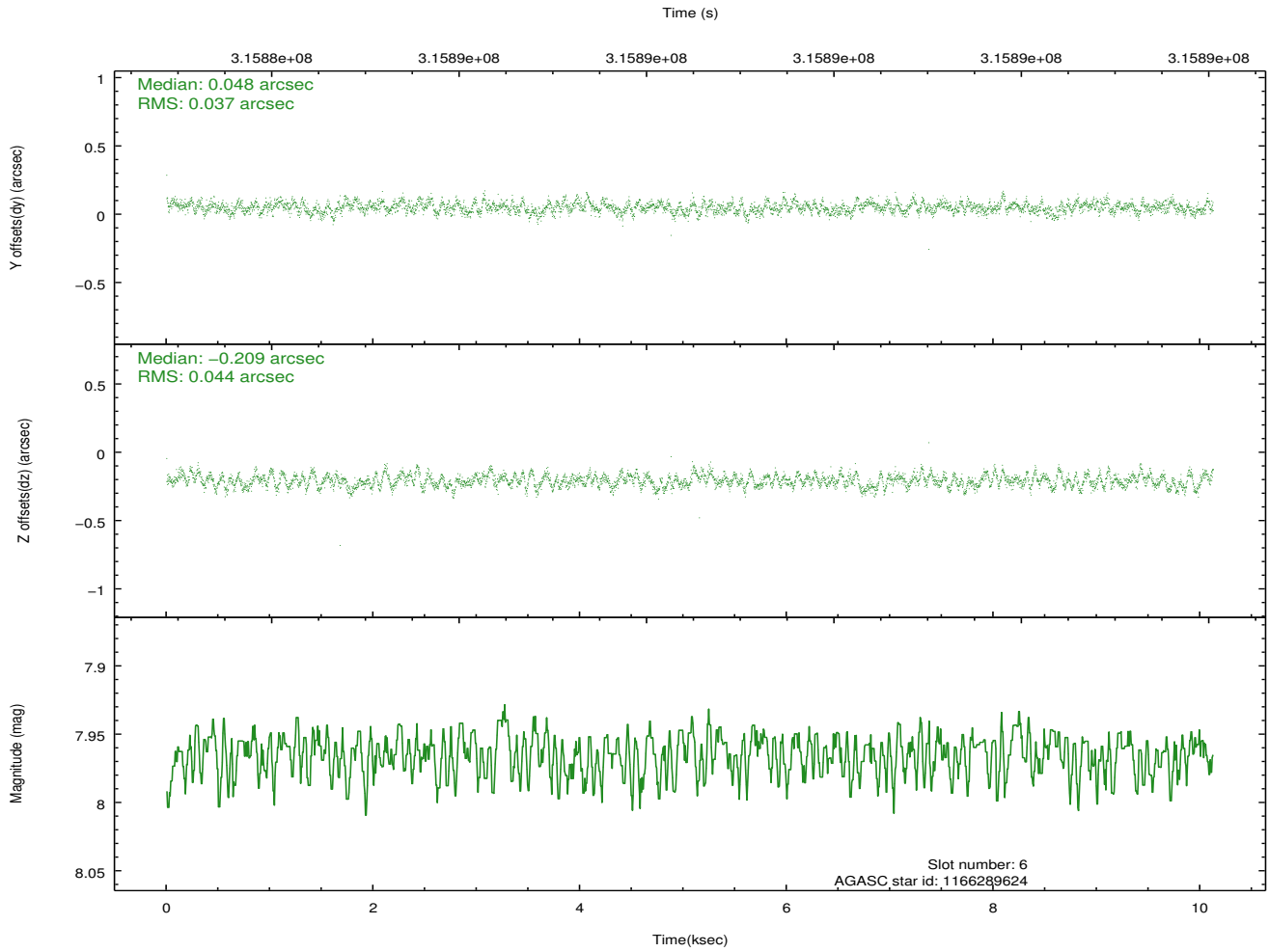
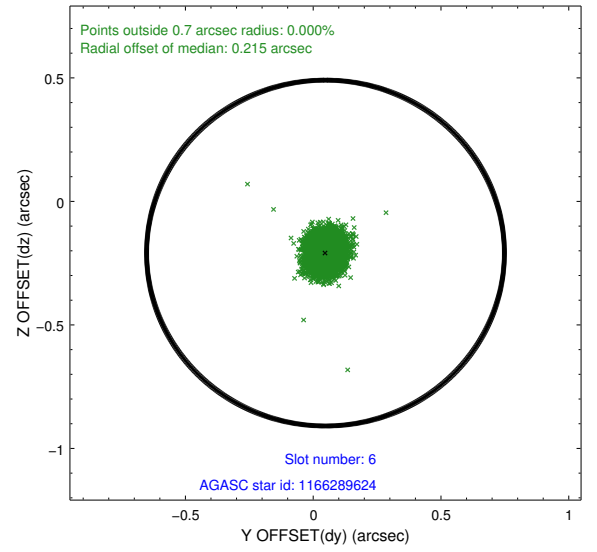
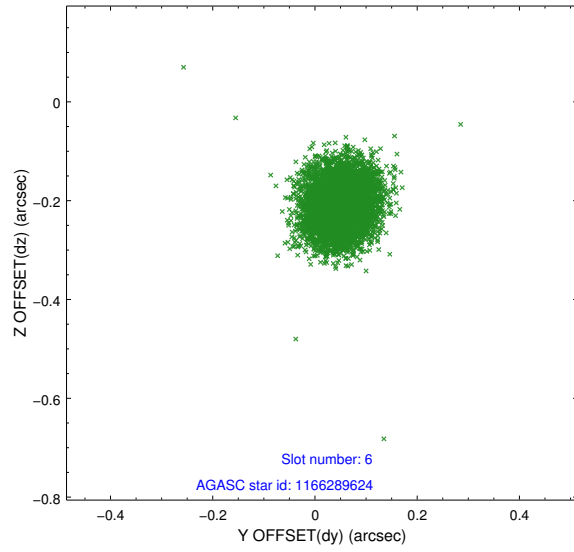
2.4.2 Slot 4



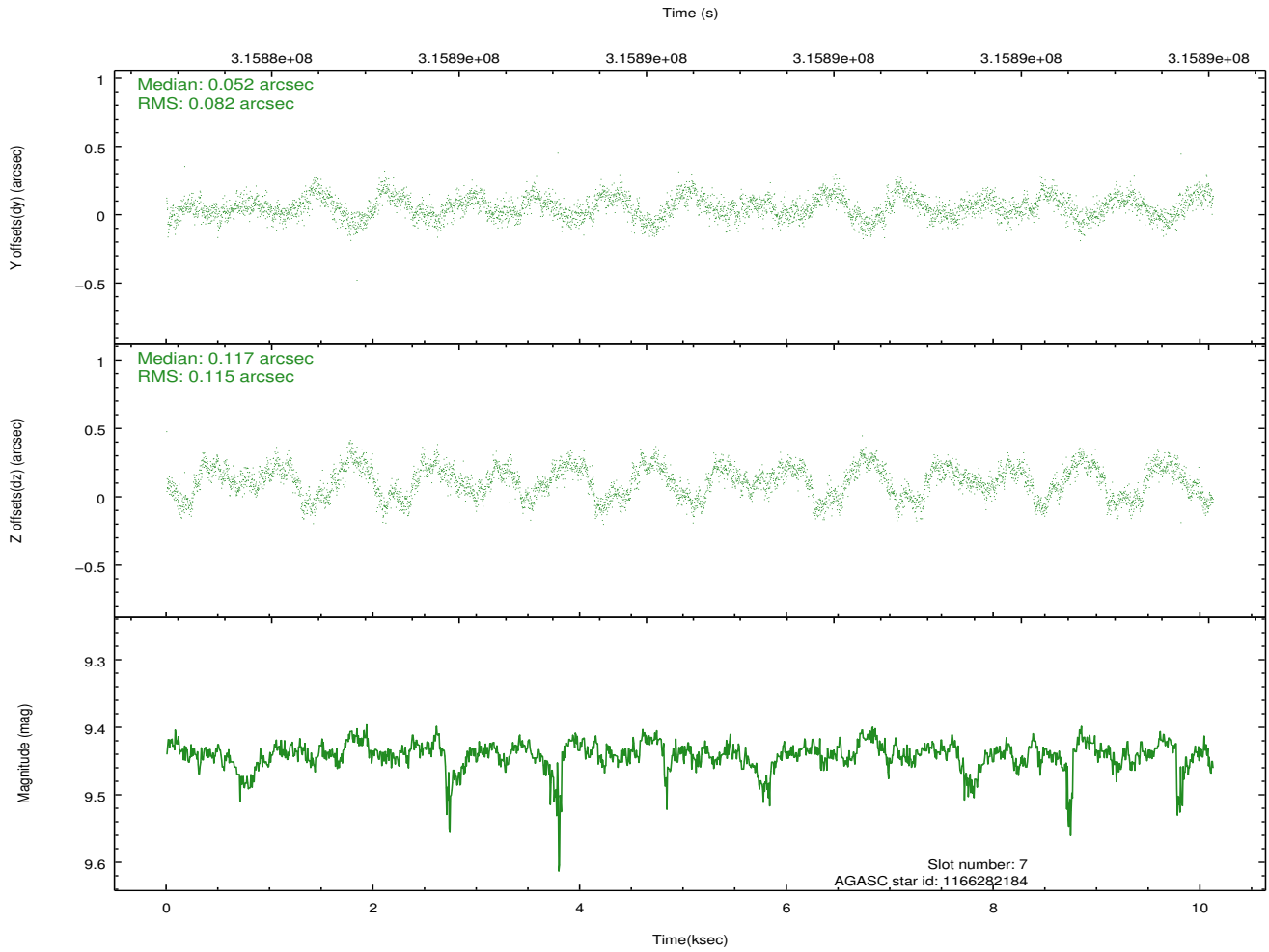
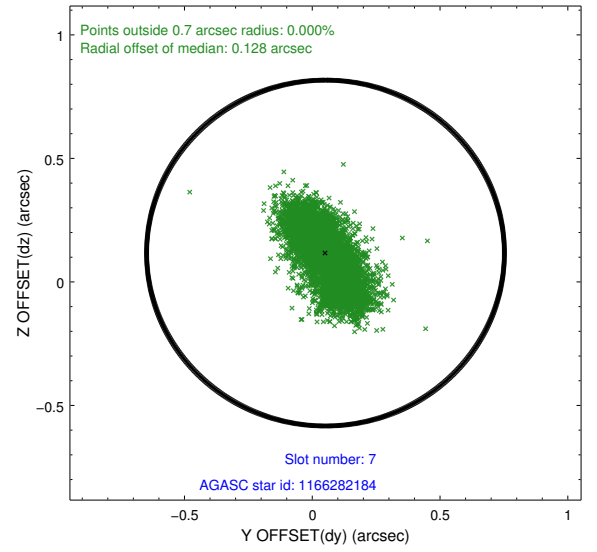
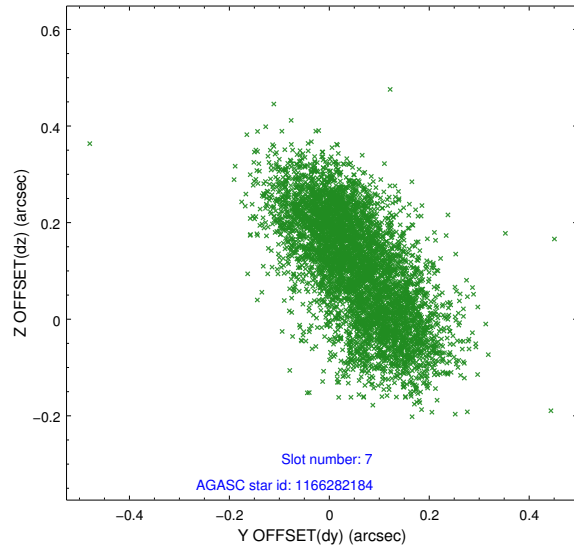
2.4.3 Slot 5



2.4.4 Slot 6

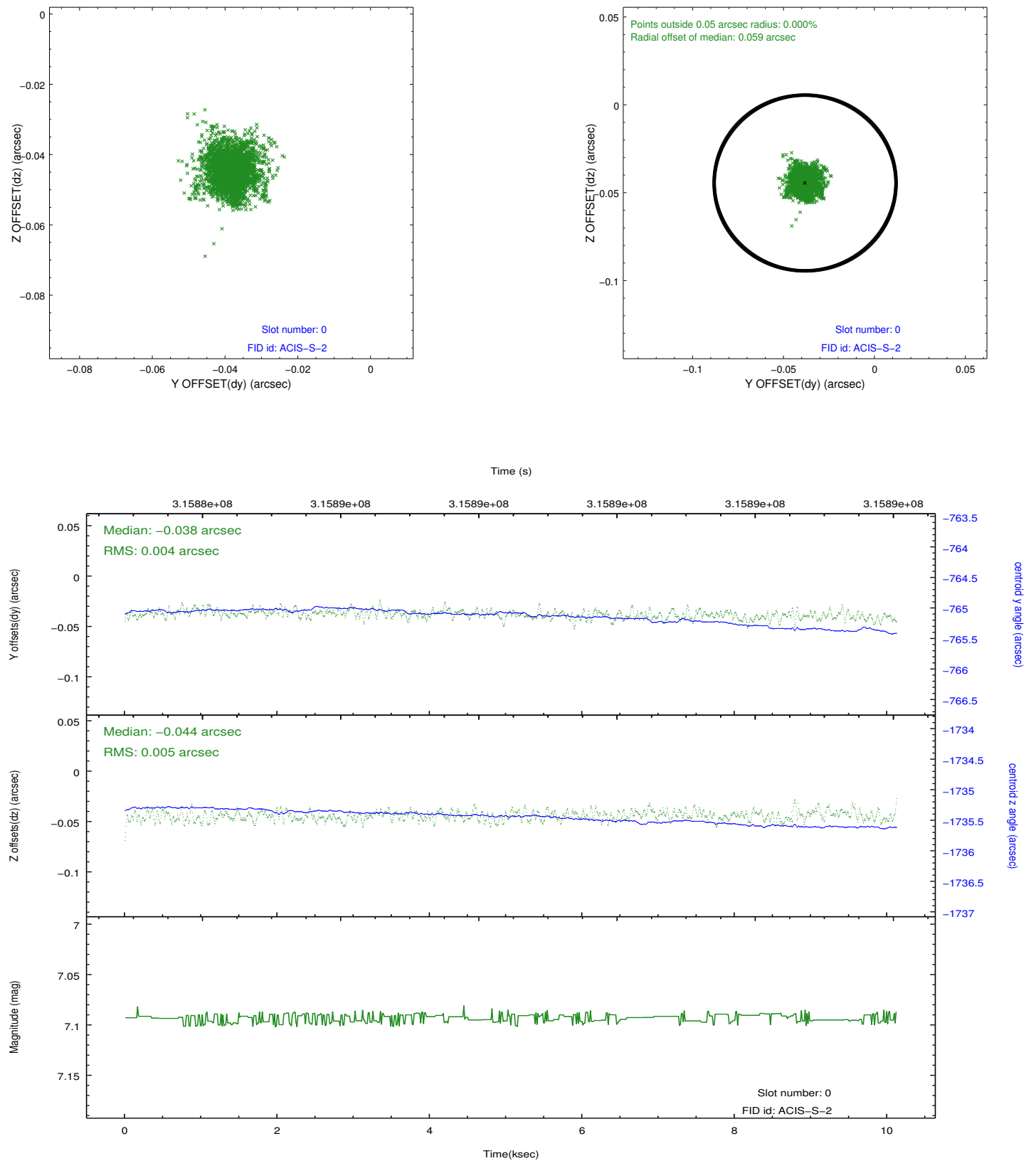


2.4.5 Slot 7

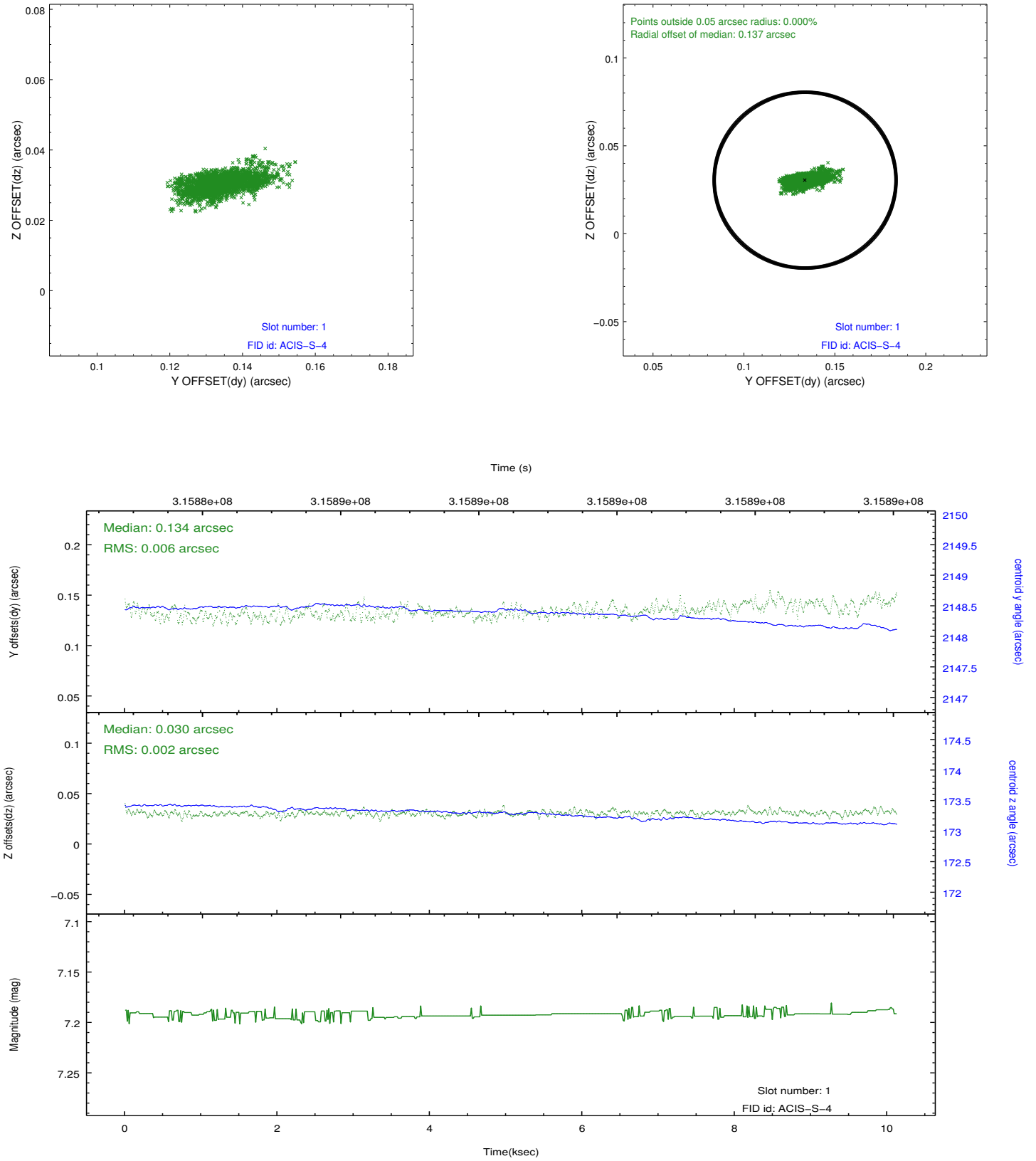


2.5 FID Slots

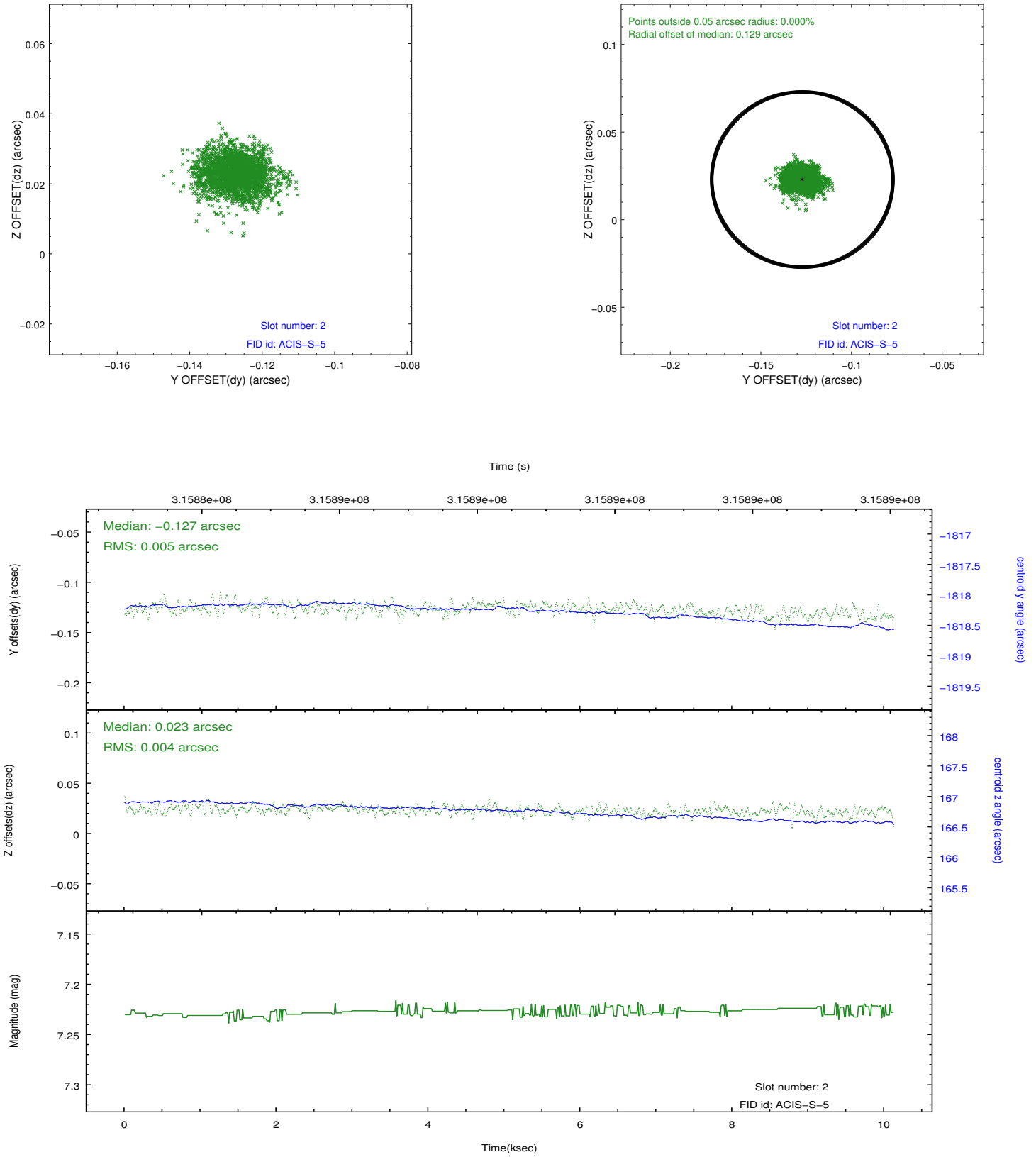
2.5.1 Slot 0



2.5.2 Slot 1



2.5.3 Slot 2



A Summary

A.1 Status

V&V Scientist	Jen Lauer
V&V Date (YYYY-MM-DD)	2012.05.09
V&V Edition	1
V&V Disposition and Status	OK
V&V Charge Time	10.1184

A.2 Comments

Window constraint met.