

V&V Reference Report

L2 ASCDS Version : 8.4.4

Observation 9145 - L2 Version 2
Chandra X-Ray Center

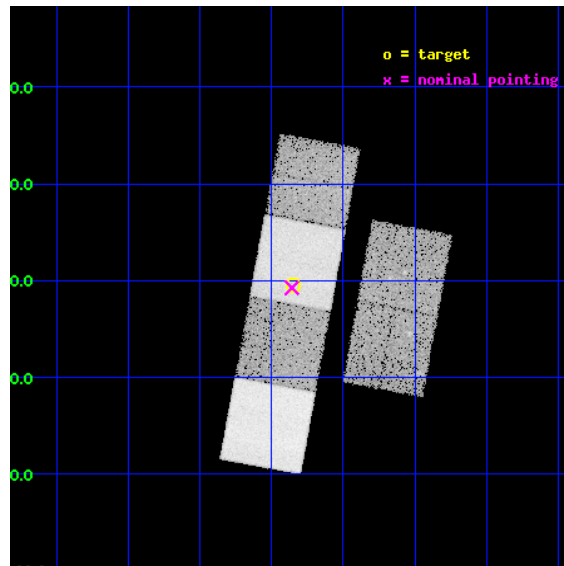
L2 Processing Date : May 2 2012

Contents

1	Front	2
2	OBI	3
2.1	OBI	3
2.1.1	Images	3
2.1.2	Bias	3
2.1.3	Parameters	4
2.1.4	Events	4
2.2	Compared Parameters	5
2.3	Aspect	6
2.4	Star Slots	9
2.4.1	Slot 3	9
2.4.2	Slot 4	10
2.4.3	Slot 5	11
2.4.4	Slot 6	12
2.4.5	Slot 7	13
2.5	FID Slots	14
2.5.1	Slot 0	14
2.5.2	Slot 1	15
2.5.3	Slot 2	16
A	Summary	17
A.1	Status	17
A.2	Comments	17

1 Front

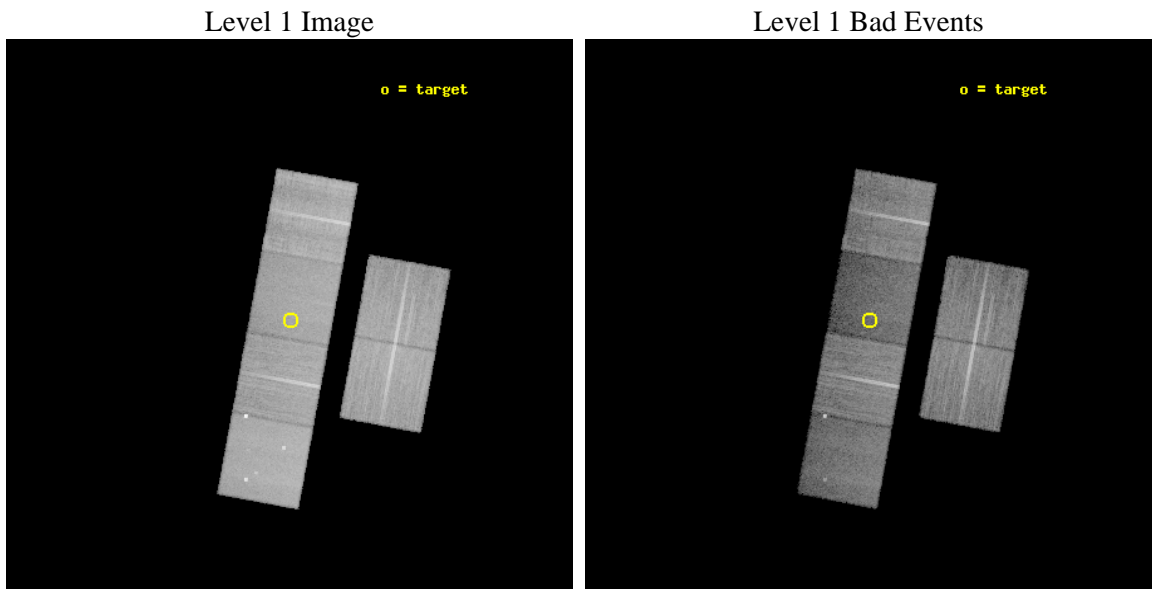
seq_num	501006	Sequence number
obs_id	9145	Observation id
title	PSRJ1832+0029: a unique probe of pulsar emission physics	Proposal
observer	Prof Duncan Lorimer	Principal investigator
object	PSR J1832+0029	Source name
dtcycle	0	
cycle	P	events from which exps? Prim/Second/Both
ra_targ	278.21125	Observer's specified target RA [deg]
dec_targ	0.491361	Observer's specified target Dec [deg]
ra_nom	278.21449095391	Nominal RA [deg]
dec_nom	0.48776481057413	Nominal Dec [deg]
roll_nom	280.49209150234	Nominal Roll [deg]
revision	2	Processing version of data
ontime	20124.799925089	Sum of GTIs [s]
livetime	19869.967590738	Livetime [s]
ontime2	20124.799925089	Sum of GTIs [s]
ontime3	20124.799925089	Sum of GTIs [s]
ontime5	20124.799925089	Sum of GTIs [s]
ontime6	20124.799925089	Sum of GTIs [s]
ontime7	20124.799925089	Sum of GTIs [s]
ontime8	20121.558954835	Sum of GTIs [s]
l2events	214486	Number of level 2 events



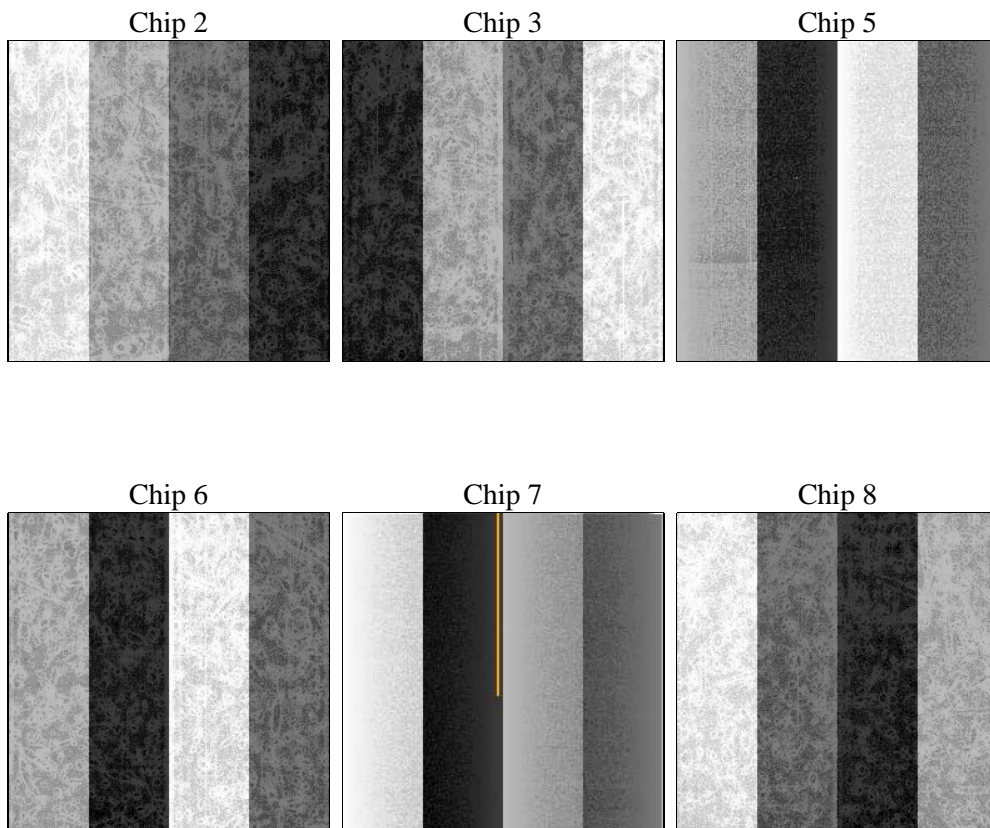
2 OBI

2.1 OBI

2.1.1 Images



2.1.2 Bias



2.1.3 Parameters

obi_num	0	Obi number	sched_exp_time	20000.000000	[s] Scheduled observation exposure time
ascdsver	8.4.4	Processing system revision	ontime	20124.799925089	Sum of GTIs [s]
caldsver	4.4.9	 	ontime2	20124.799925089	Sum of GTIs [s]
date	2012-05-02T22:23:19	Date and time of file creation	ontime3	20124.799925089	Sum of GTIs [s]
revision	2	Processing version of data	ontime5	20124.799925089	Sum of GTIs [s]
			ontime6	20124.799925089	Sum of GTIs [s]
			ontime7	20124.799925089	Sum of GTIs [s]
			ontime8	20121.558954835	Sum of GTIs [s]
			l1events	992758	Number of level 1 events

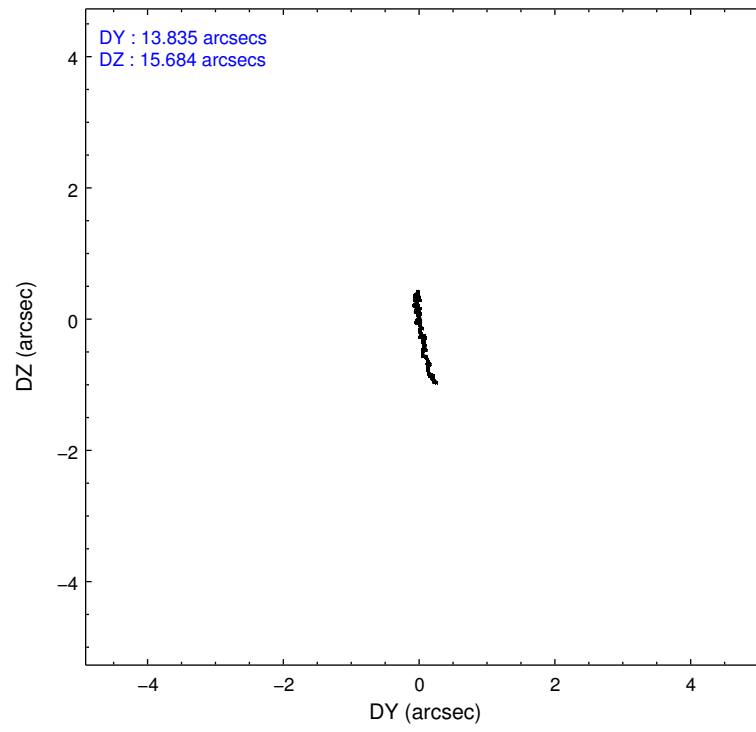
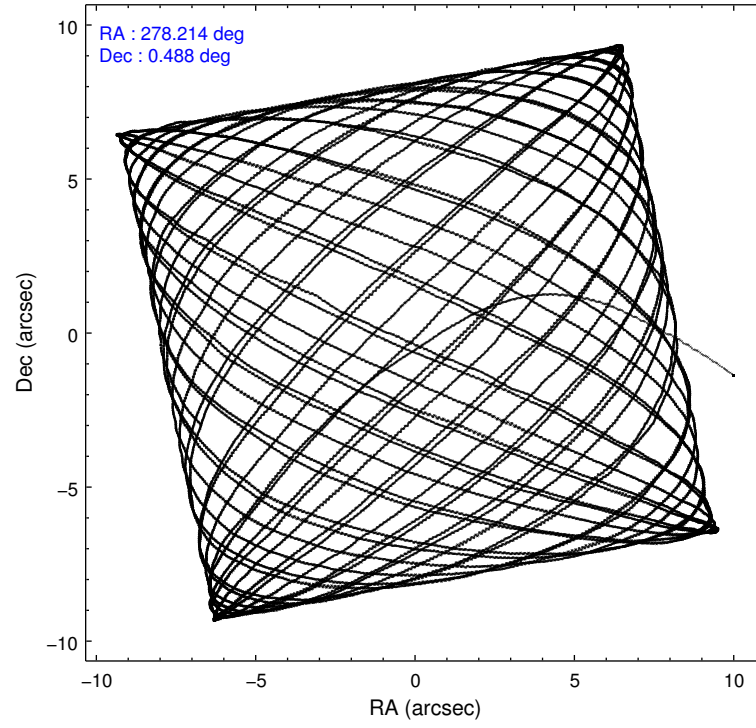
2.1.4 Events

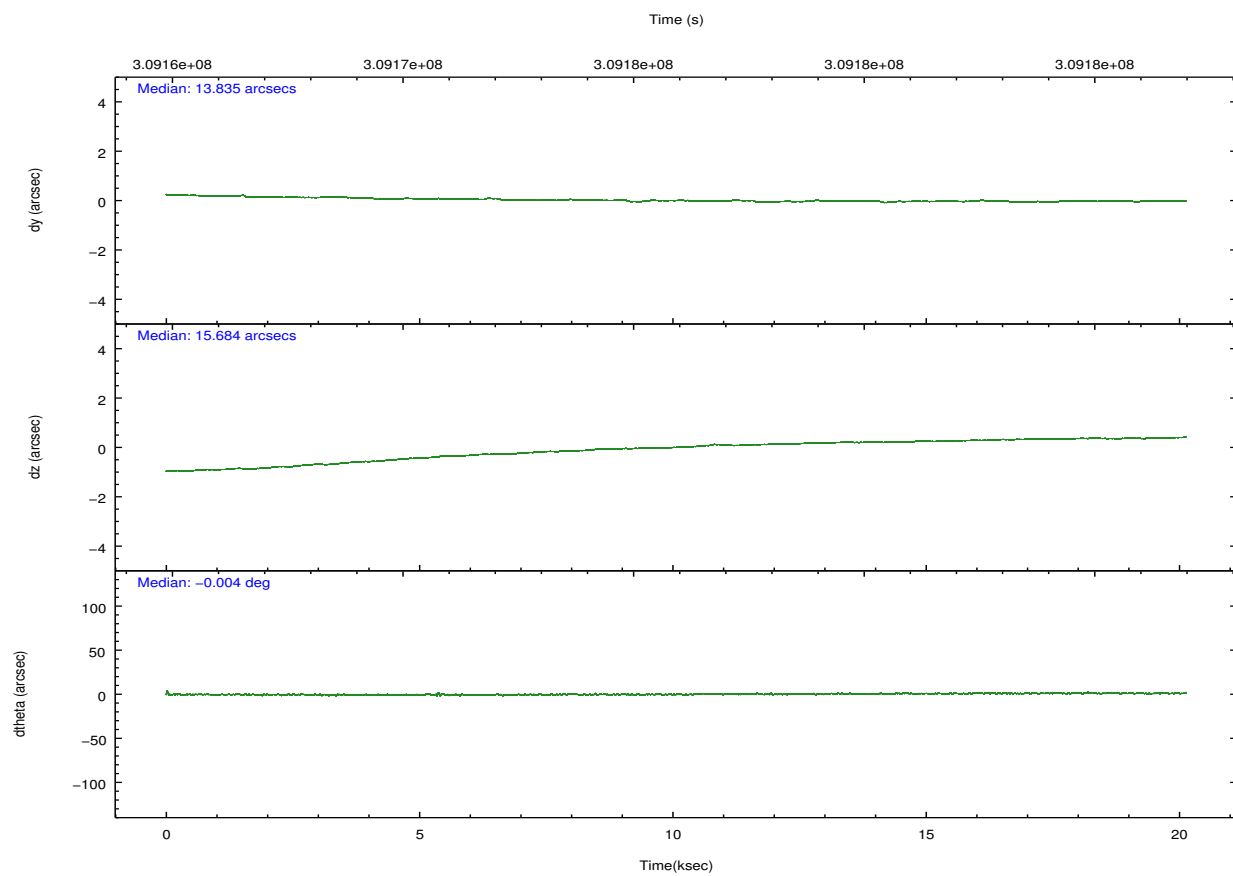
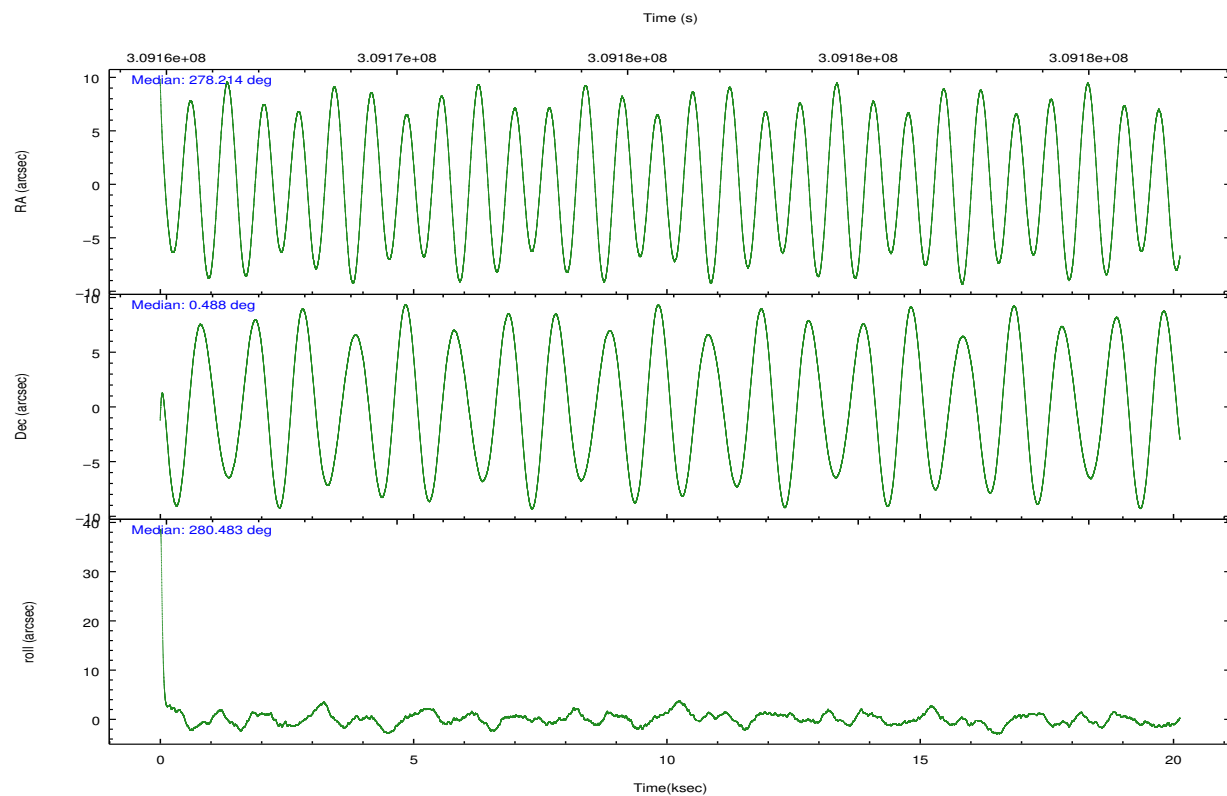
	ccd 2	ccd 3	ccd 5	ccd 6	ccd 7	ccd 8		ccd 2	ccd 3	ccd 5	ccd 6	ccd 7	ccd 8
level 1 events	168656	146238	193376	153259	144963	186266	grade 0 events	5457	5092	12010	5343	7312	12629
rejected events	153940	132546	90545	138145	73058	141021		3%	3%	6%	3%	5%	6%
rejected %	91%	90%	46%	90%	50%	75%	grade 1 events	89	76	1516	84	205	134
								0%	0%	0%	0%	0%	0%
							grade 2 events	3672	2989	30456	3421	15267	10580
								2%	2%	15%	2%	10%	5%
							grade 3 events	1462	1583	4806	1663	6773	4893
								0%	1%	2%	1%	4%	2%
							grade 4 events	1531	1582	4407	1662	6647	4690
								0%	1%	2%	1%	4%	2%
							grade 5 events	4189	4987	15507	5061	15241	7828
								2%	3%	8%	3%	10%	4%
							grade 6 events	2638	2491	51487	3092	36129	12562
								1%	1%	26%	2%	24%	6%
							grade 7 events	149618	127438	73187	132933	57389	132950
								88%	87%	37%	86%	39%	71%

2.2 Compared Parameters

Parameter	Planned	Actual	Parameter	Planned	Actual
Instrument	ACIS	ACIS	Obspar format version number	7	7
Detector	ACIS-235678	ACIS-235678	Obspar file type	PREDICTED	ACTUAL
Grating	NONE	NONE	Obspar update status	NONE	UPDATED
Data mode	VFAINT	VFAINT	CCD I0 on	N	N
Observation mode	POINTING	POINTING	CCD I1 on	N	N
[deg] Pointing RA	278.196465	278.2144909539062	CCD I2 on	Y	Y
[deg] Pointing Dec	0.508315	0.4877648105741311	CCD I3 on	Y	Y
[deg] Pointing Roll	280.335599	280.4920915023429	CCD S0 on	N	N
[mm] SIM focus pos	-0.684267	-0.6828225247311905	CCD S1 on	O1	Y
[mm] SIM defocus	0	0.001444936568705701	CCD S2 on	Y	Y
[mm] SIM translation stage pos	-190.132523	-190.1400660498719	CCD S3 on	Y	Y
[mm] SIM translation stage offset	0	0.00754346686406393	CCD S4 on	O2	Y
[s] Observation start time (MET)	309165983.184000	309164904.28274	CCD S5 on	N	N
Observation start date	2007-10-19T07:25:18	2007-10-19T07:08:24	Number of optional ACIS chips dropped	0	0
[s] Observation end time (MET)	309185983.184000	309186892.0713	On-chip summing requested	N	N
Observation end date	2007-10-19T12:58:38	2007-10-19T13:14:52	Subarray requested	NONE	NONE
Read mode	TIMED	TIMED	Alternating exposures requested	N	N
			[s] Primary exposure time	0.000000	3.2

2.3 Aspect



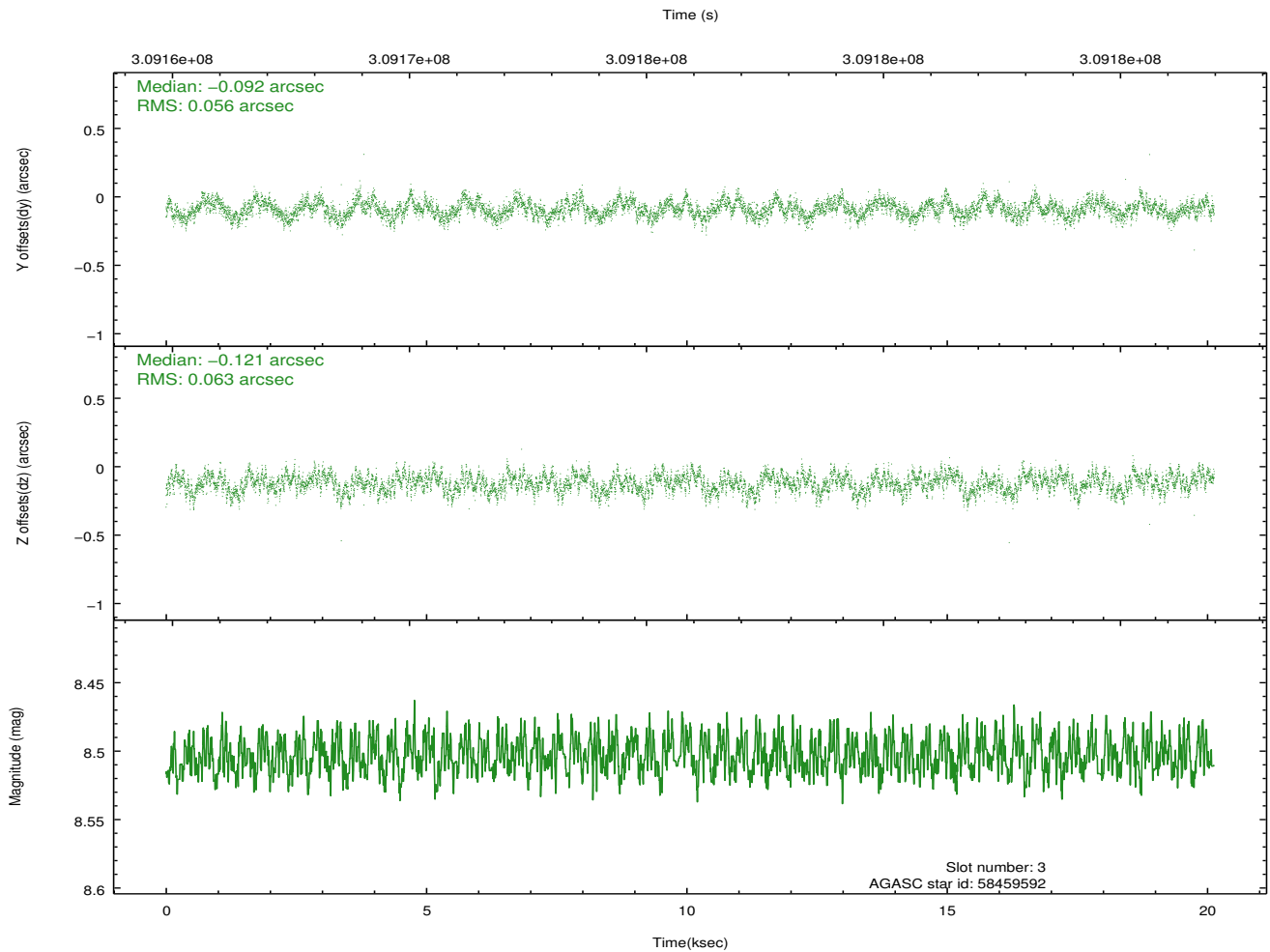
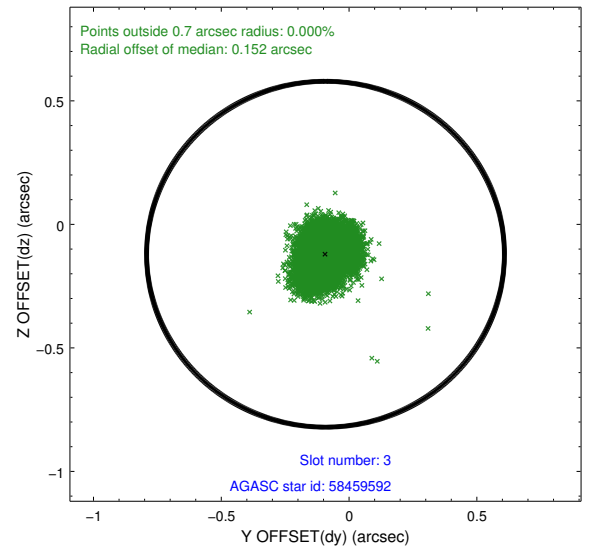
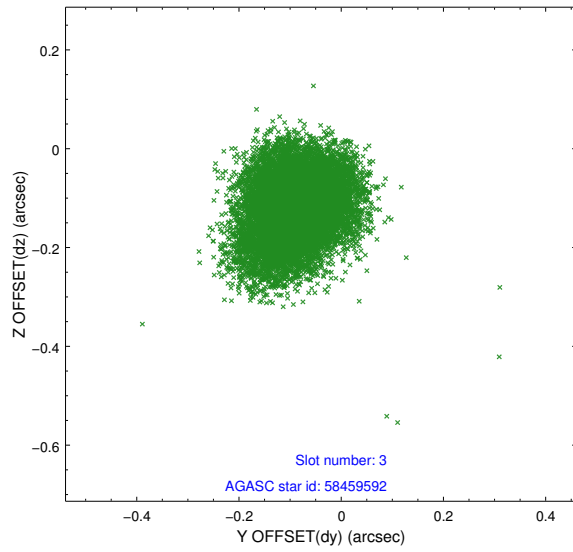


Slot Statistics

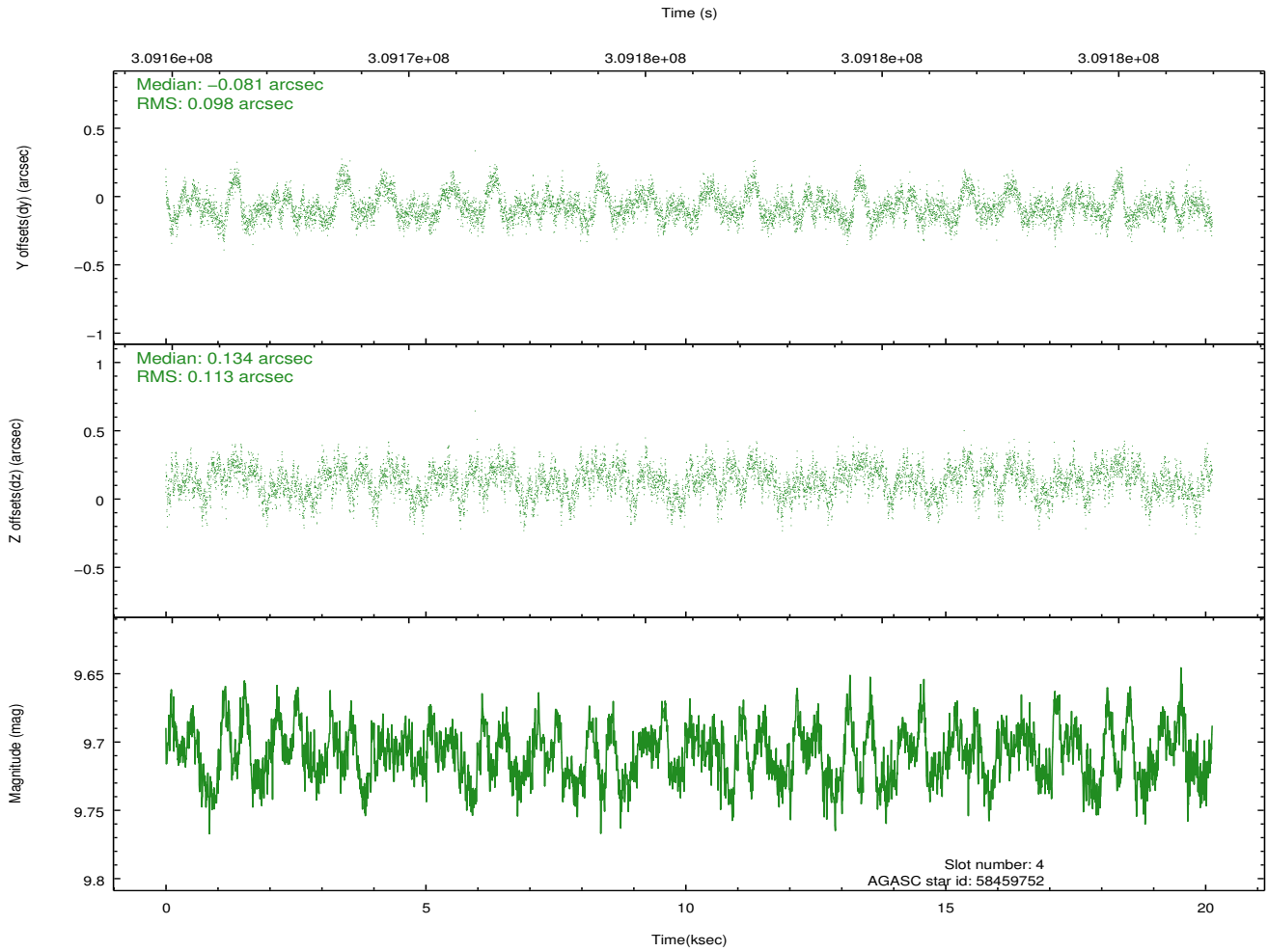
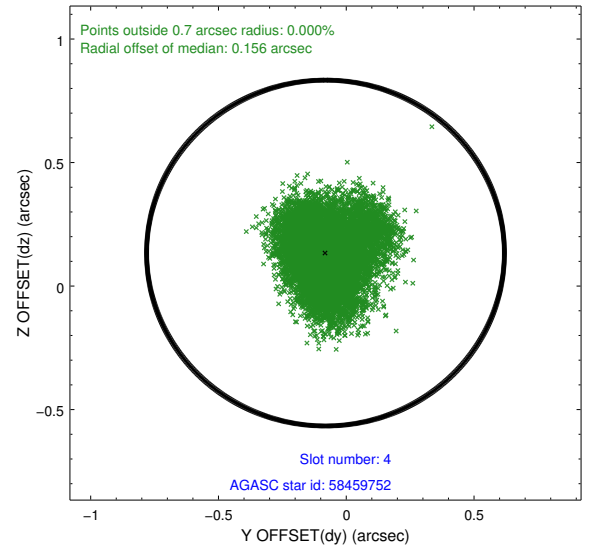
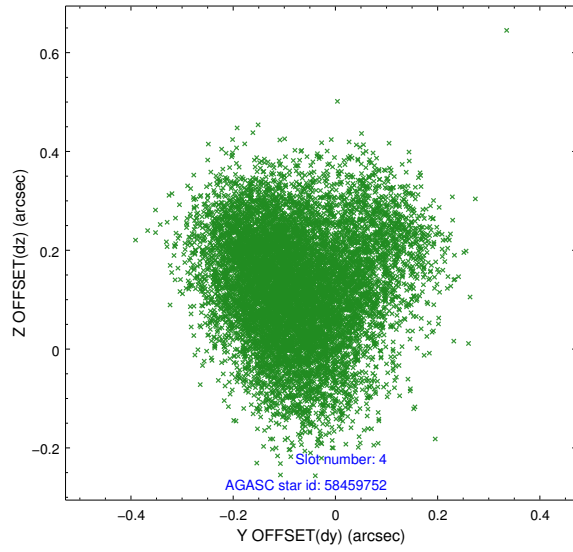
slot	status	id	mag	n_pts	med_dy	med_dz	dr1	dr2	ra	dec	mean_y	mean_z
0	FID	ACIS-S-2	7.09	4909	-0.067	-0.023	0.012	0.019	0.000000	0.000000	-766.86	-1737.00
1	FID	ACIS-S-4	7.19	4910	0.197	0.039	0.012	0.021	0.000000	0.000000	2146.59	171.37
2	FID	ACIS-S-5	7.22	4909	-0.162	-0.007	0.007	0.012	0.000000	0.000000	-1819.57	165.19
3	GUIDE	58459592	8.50	9818	-0.092	-0.121	0.091	0.143	277.654166	0.379940	104.96	-2003.29
4	GUIDE	58459752	9.71	9810	-0.081	0.134	0.160	0.257	278.755576	0.676218	-233.34	2088.38
5	GUIDE	58460104	9.14	9816	-0.043	-0.064	0.099	0.154	278.228099	0.595419	-287.75	168.66
6	GUIDE	58460224	8.87	9814	-0.003	-0.169	0.108	0.167	277.730600	0.429564	-21.42	-1700.44
7	GUIDE	58461392	10.04	9798	0.213	0.219	0.150	0.240	278.854913	0.020871	2151.88	2017.90

2.4 Star Slots

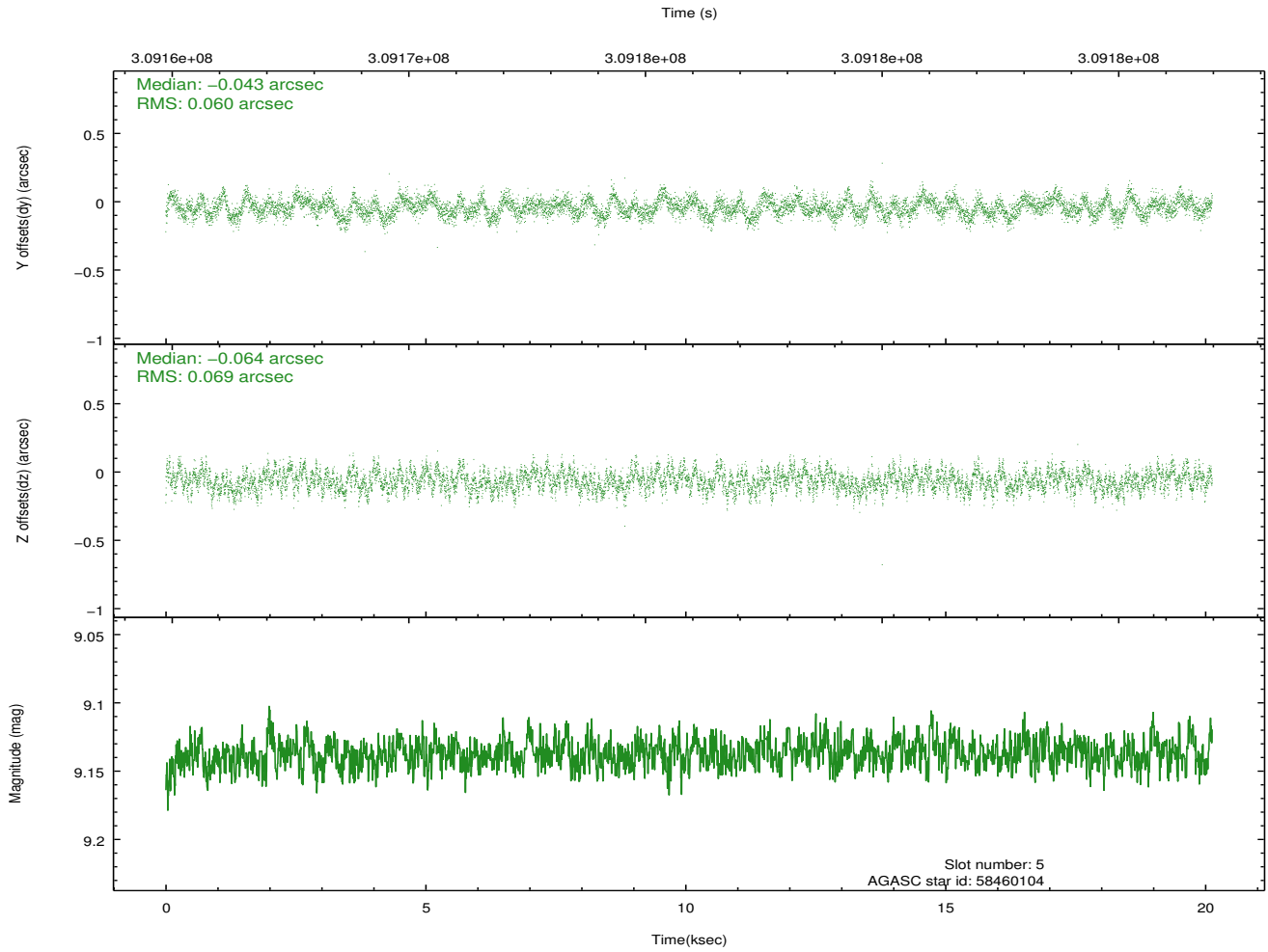
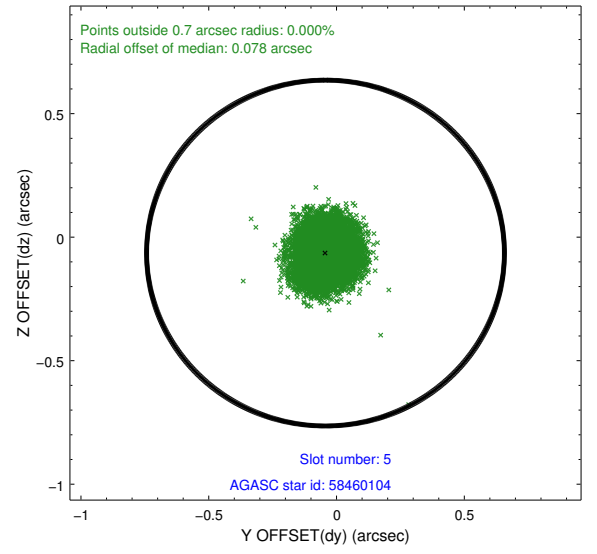
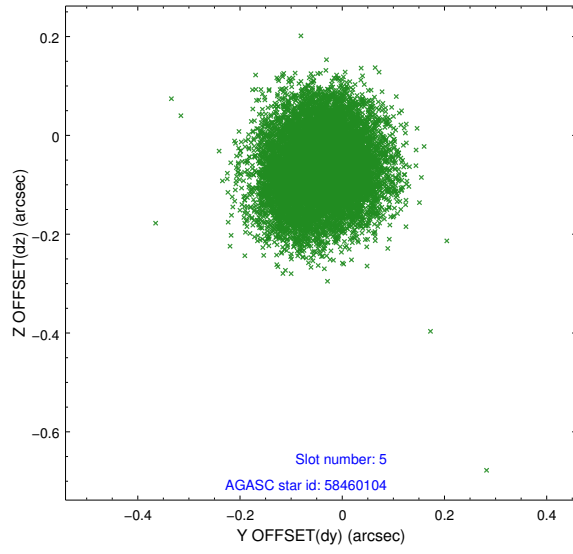
2.4.1 Slot 3



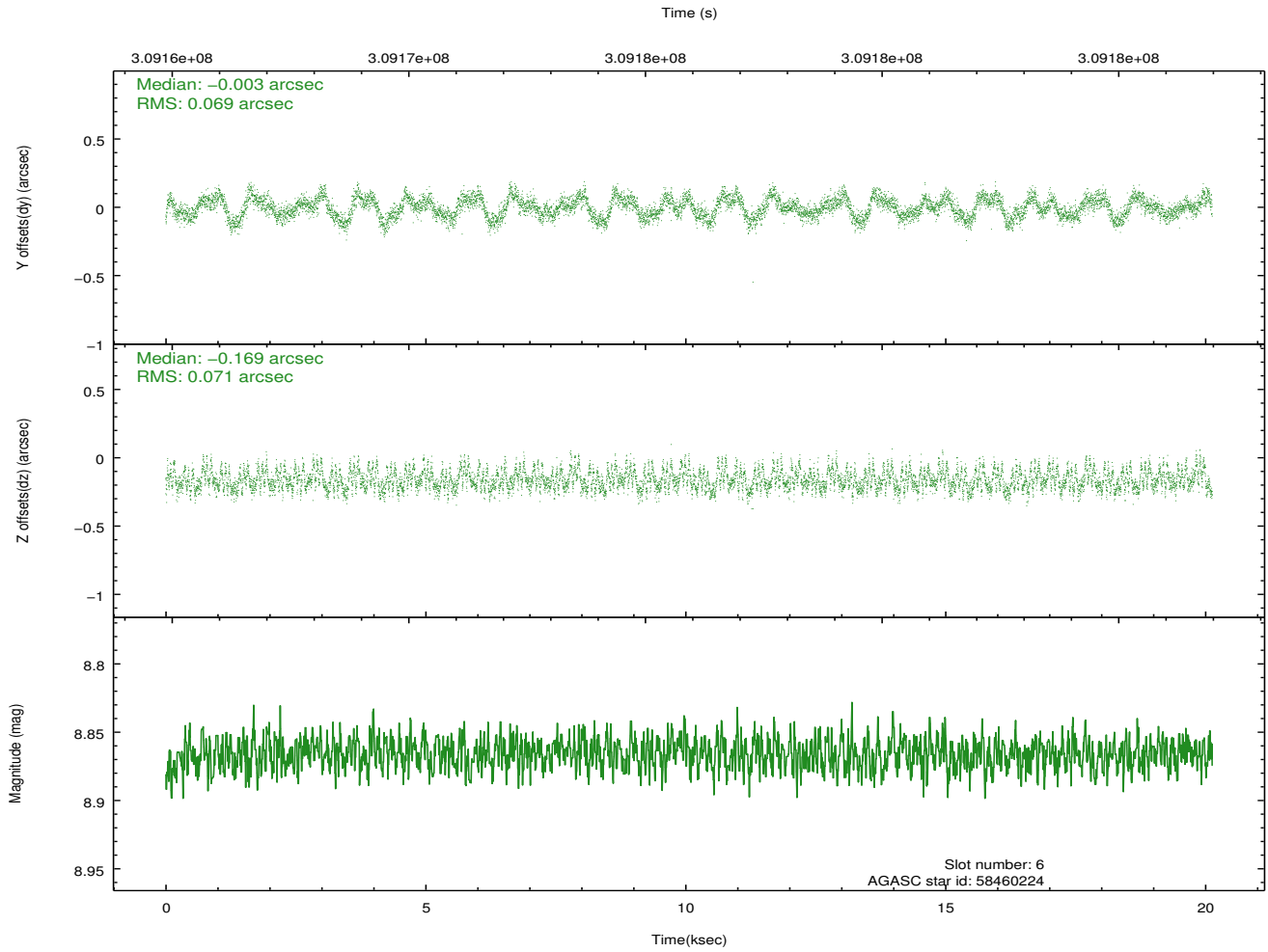
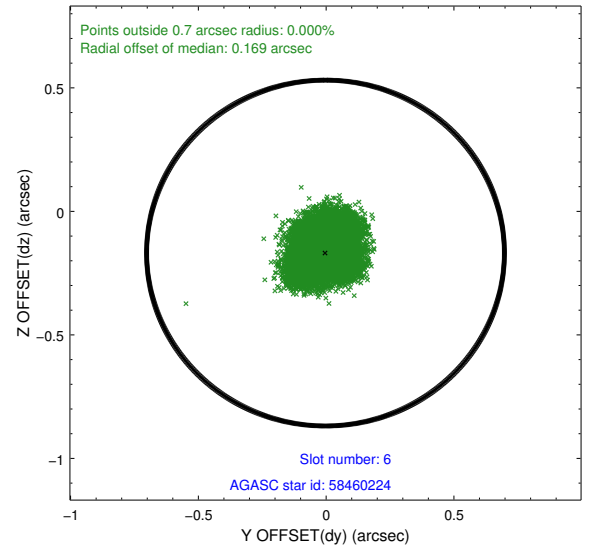
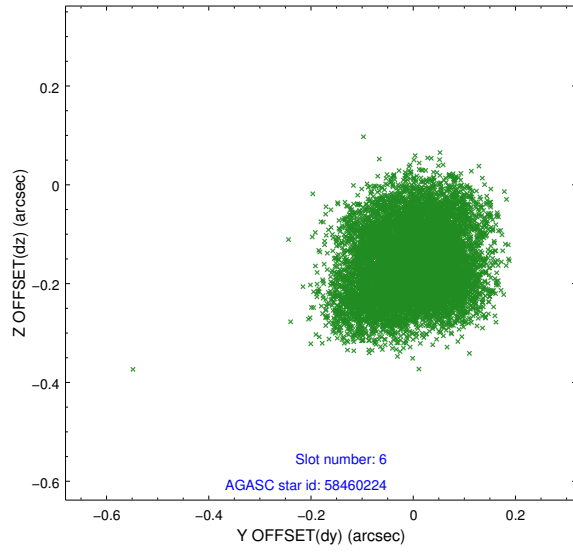
2.4.2 Slot 4



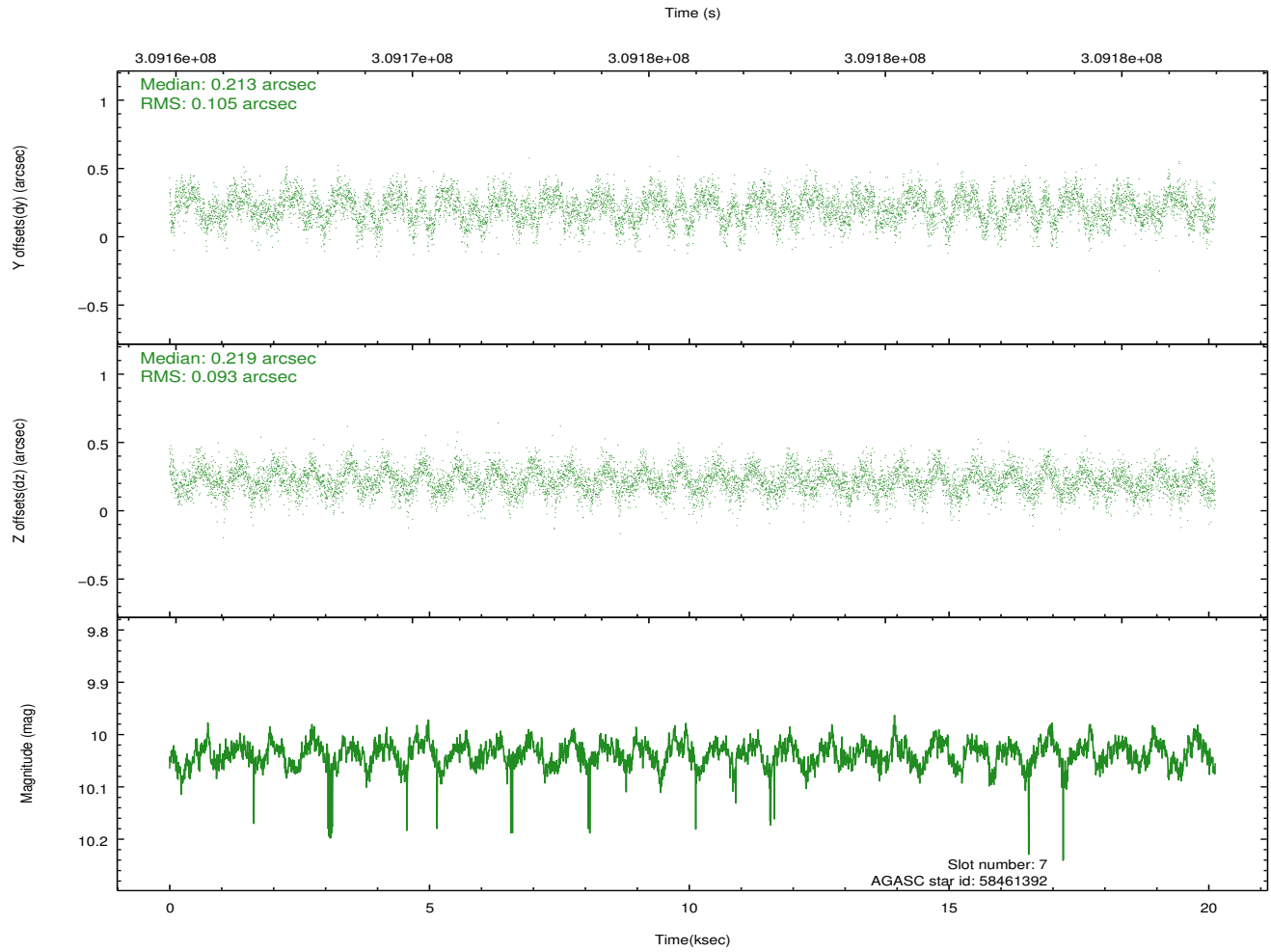
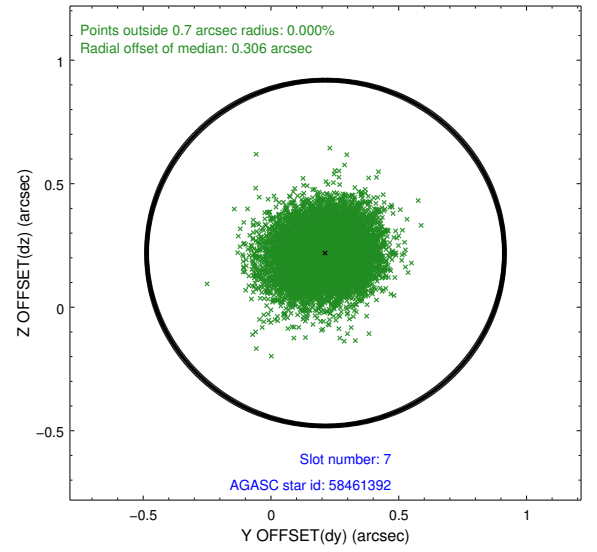
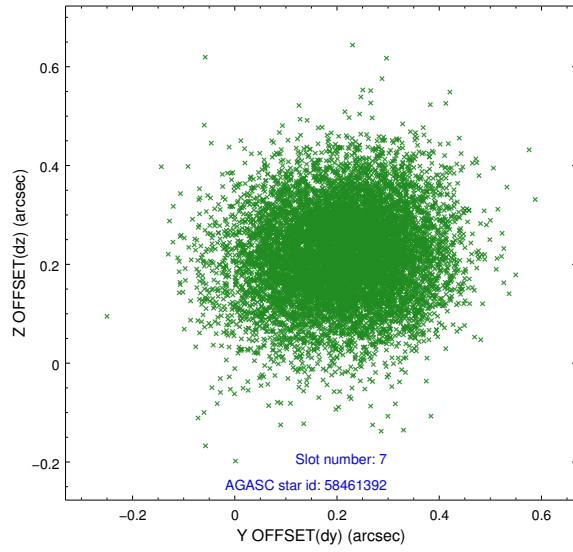
2.4.3 Slot 5



2.4.4 Slot 6

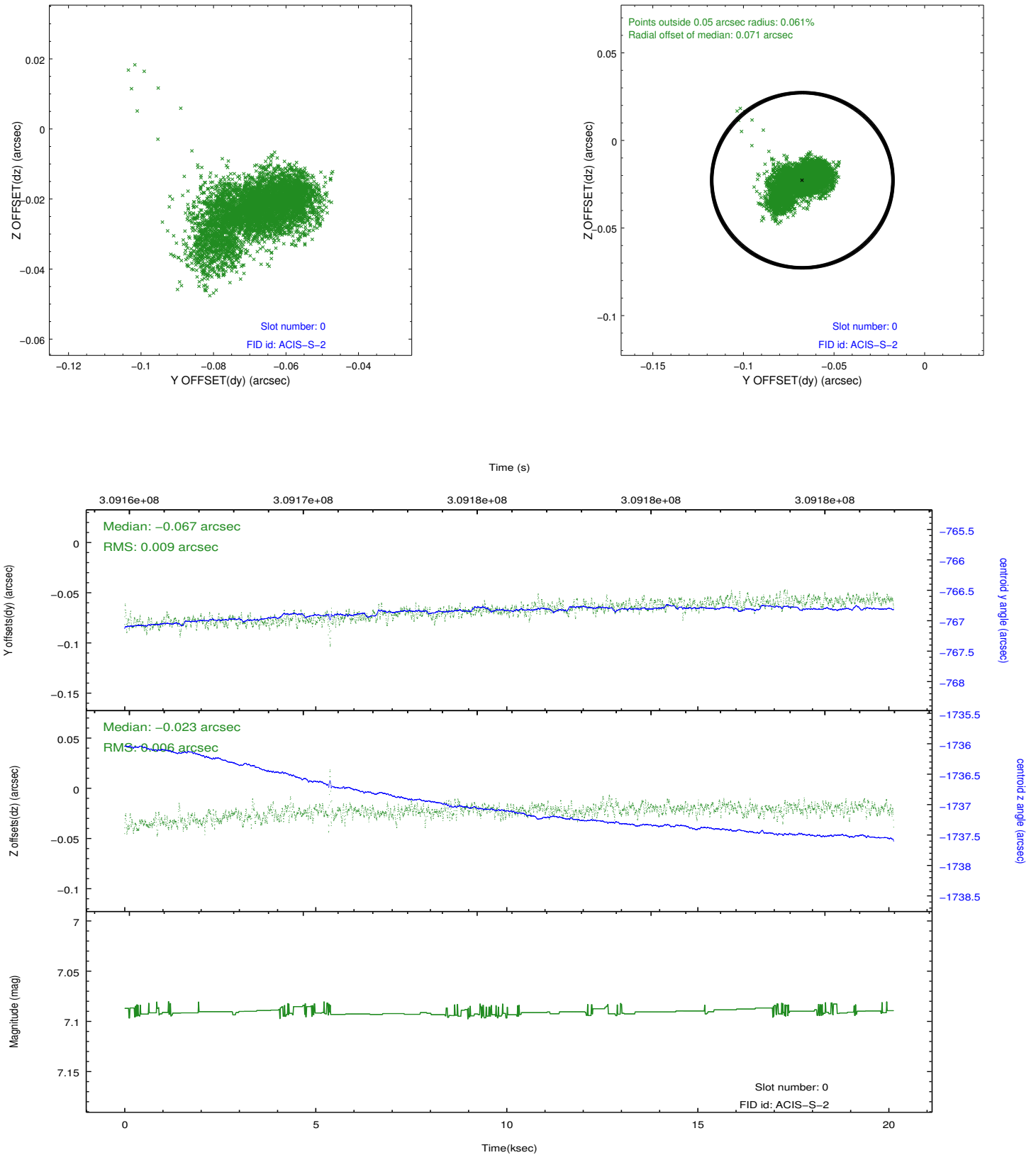


2.4.5 Slot 7

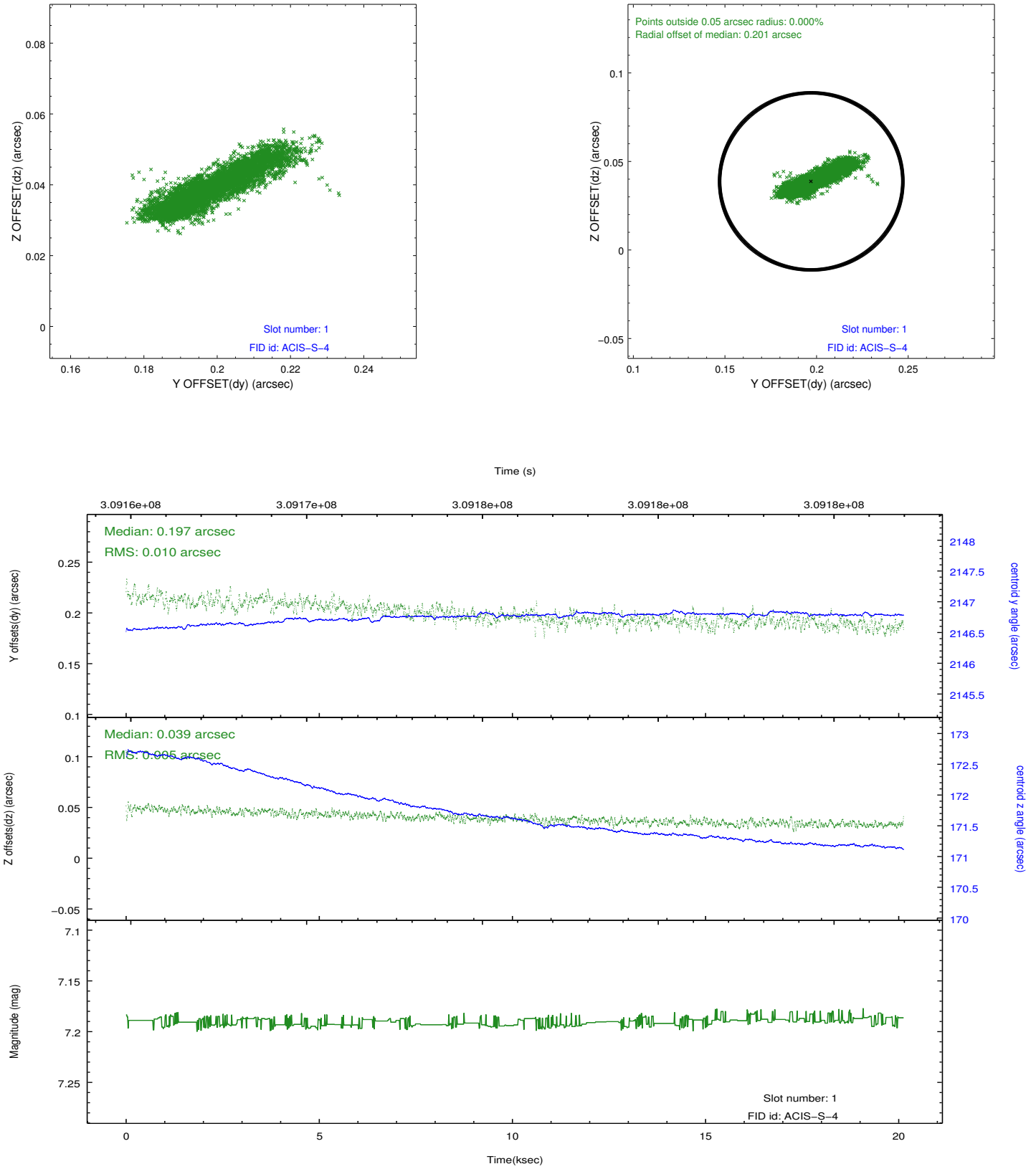


2.5 FID Slots

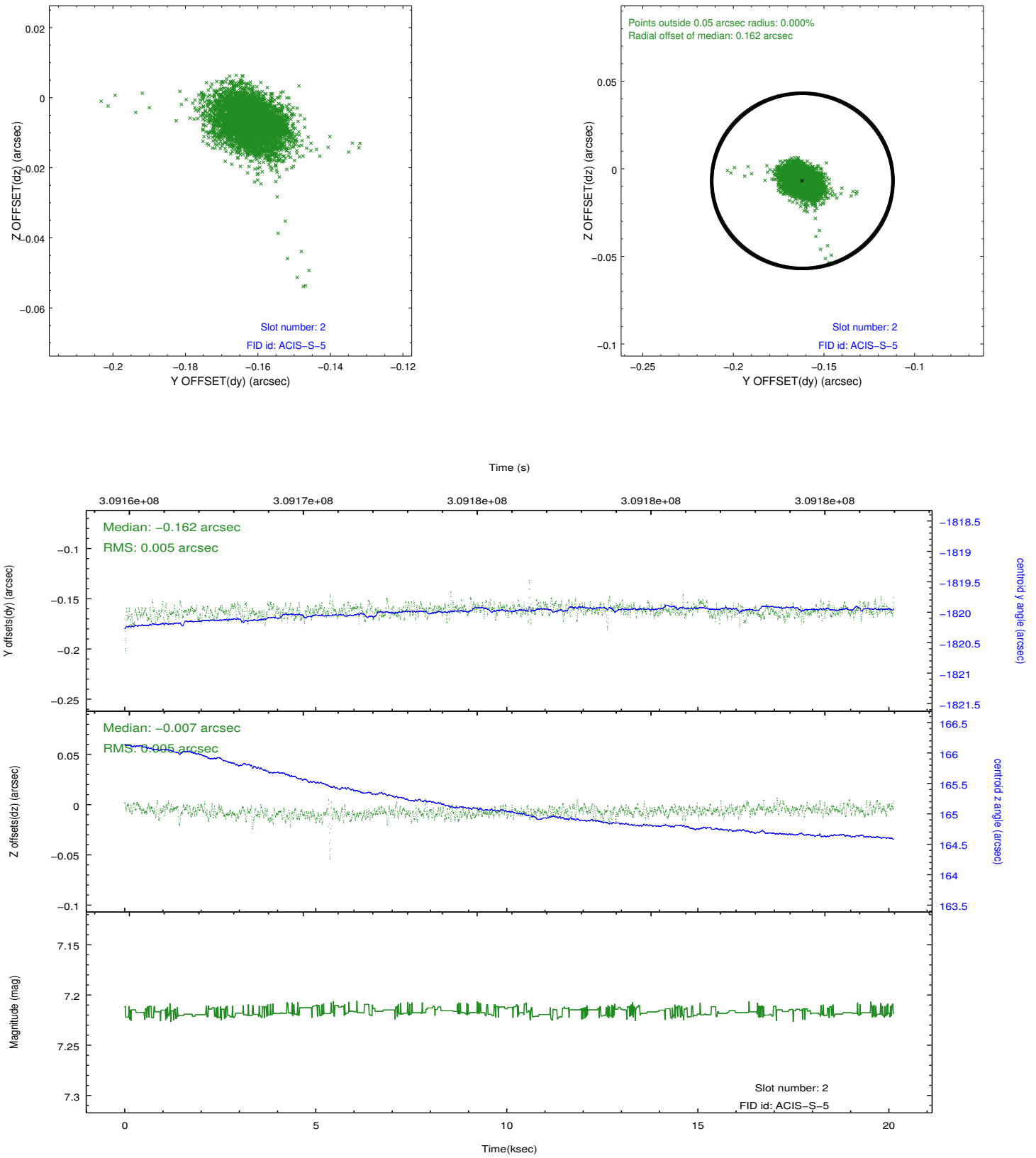
2.5.1 Slot 0



2.5.2 Slot 1



2.5.3 Slot 2



A Summary

A.1 Status

V&V Scientist	Jen Lauer
V&V Date (YYYY-MM-DD)	2012.05.04
V&V Edition	1
V&V Disposition and Status	OK
V&V Charge Time	20.1247999

A.2 Comments