

V&V Reference Report

L2 ASCDS Version : 8.4.4

Observation 9139 - L2 Version 2
Chandra X-Ray Center

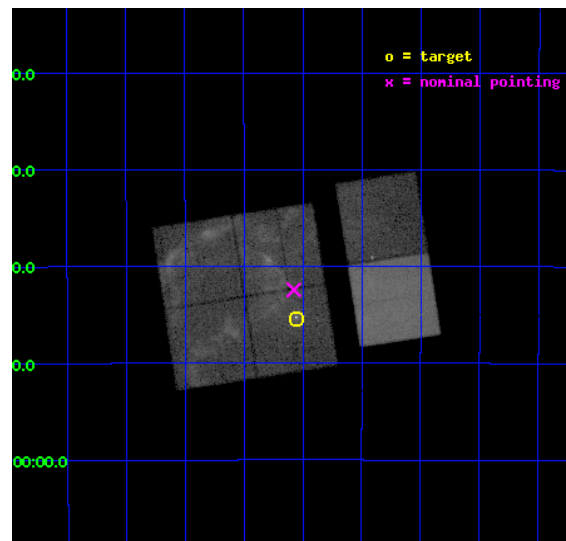
L2 Processing Date : May 13 2012

Contents

1	Front	2
2	OBI	3
2.1	OBI	3
2.1.1	Images	3
2.1.2	Bias	3
2.1.3	Parameters	4
2.1.4	Events	4
2.2	Compared Parameters	5
2.3	Aspect	6
2.4	Star Slots	9
2.4.1	Slot 3	9
2.4.2	Slot 4	10
2.4.3	Slot 5	11
2.4.4	Slot 6	12
2.4.5	Slot 7	13
2.5	FID Slots	14
2.5.1	Slot 0	14
2.5.2	Slot 1	15
2.5.3	Slot 2	16
A	Summary	17
A.1	Status	17
A.2	Comments	17

1 Front

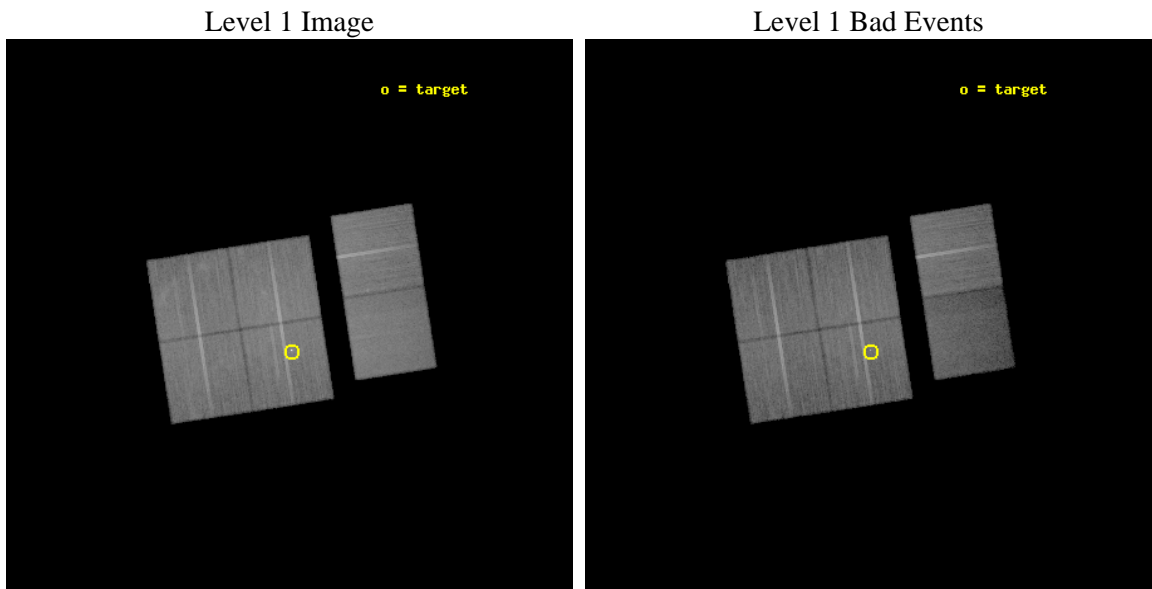
seq_num	501000	Sequence number
obs_id	9139	Observation id
title	HESS J1731-347: The first TeV pulsar wind nebula from a supersonic pulsar with an X-ray bow shock geometry?	Proposal title
observer	Dr. Gerd Puehlhofer	Principal investigator
object	HESS J1731-347-XC	Source name
dtcycle	0	
cycle	P	events from which exps? Prim/Second/Both
ra_targ	263.0125	Observer's specified target RA [deg]
dec_targ	-34.757083	Observer's specified target Dec [deg]
ra_nom	263.01911671048	Nominal RA [deg]
dec_nom	-34.707126323159	Nominal Dec [deg]
roll_nom	81.21246699669	Nominal Roll [deg]
revision	2	Processing version of data
ontime	29606.358899474	Sum of GTIs [s]
livetime	29231.46535628	Livetime [s]
ontime0	29609.599889755	Sum of GTIs [s]
ontime1	29609.599889755	Sum of GTIs [s]
ontime2	29606.358929455	Sum of GTIs [s]
ontime3	29606.358899474	Sum of GTIs [s]
ontime6	29609.599889755	Sum of GTIs [s]
ontime7	29609.599889755	Sum of GTIs [s]
l2events	268259	Number of level 2 events



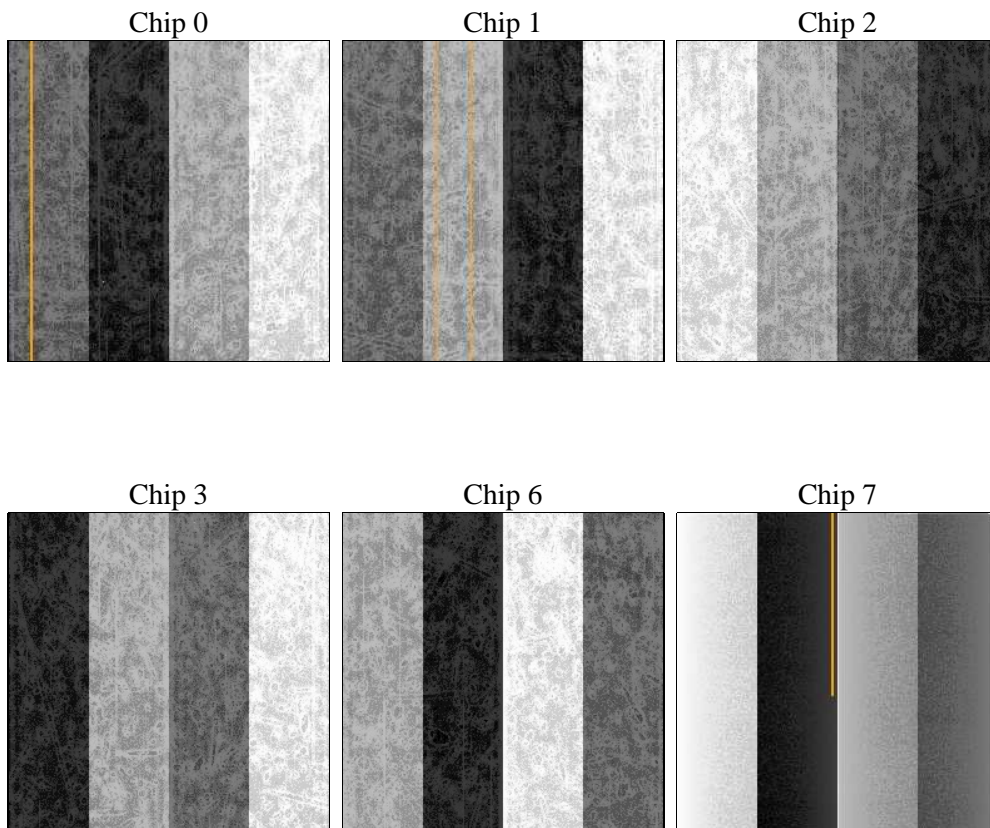
2 OBI

2.1 OBI

2.1.1 Images



2.1.2 Bias



2.1.3 Parameters

obi_num	0	Obi number	sched_exp_time	29455.073000	[s] Scheduled observation exposure time
ascdsver	8.4.4	Processing system revision	ontime	29606.358899474	Sum of GTIs [s]
caldsver	4.4.9	 	ontime0	29609.599889755	Sum of GTIs [s]
date	2012-05-13T14:09:27	Date and time of file creation	ontime1	29609.599889755	Sum of GTIs [s]
revision	2	Processing version of data	ontime2	29606.358929455	Sum of GTIs [s]
			ontime3	29606.358899474	Sum of GTIs [s]
			ontime6	29609.599889755	Sum of GTIs [s]
			ontime7	29609.599889755	Sum of GTIs [s]
			l1events	1384873	Number of level 1 events

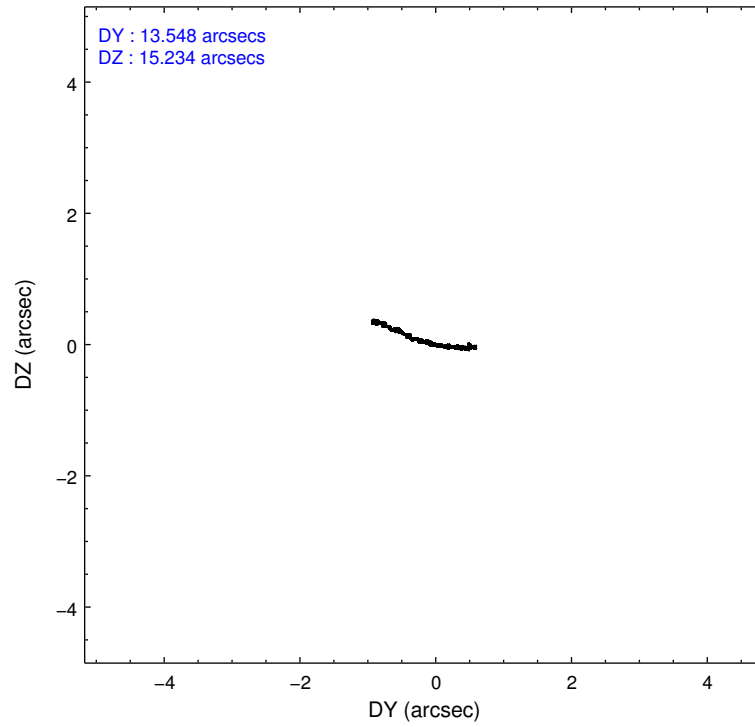
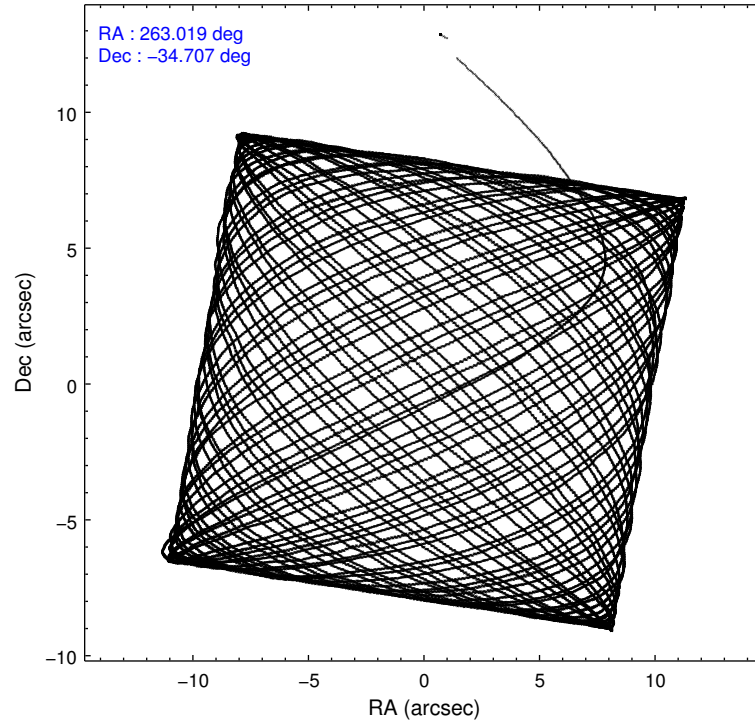
2.1.4 Events

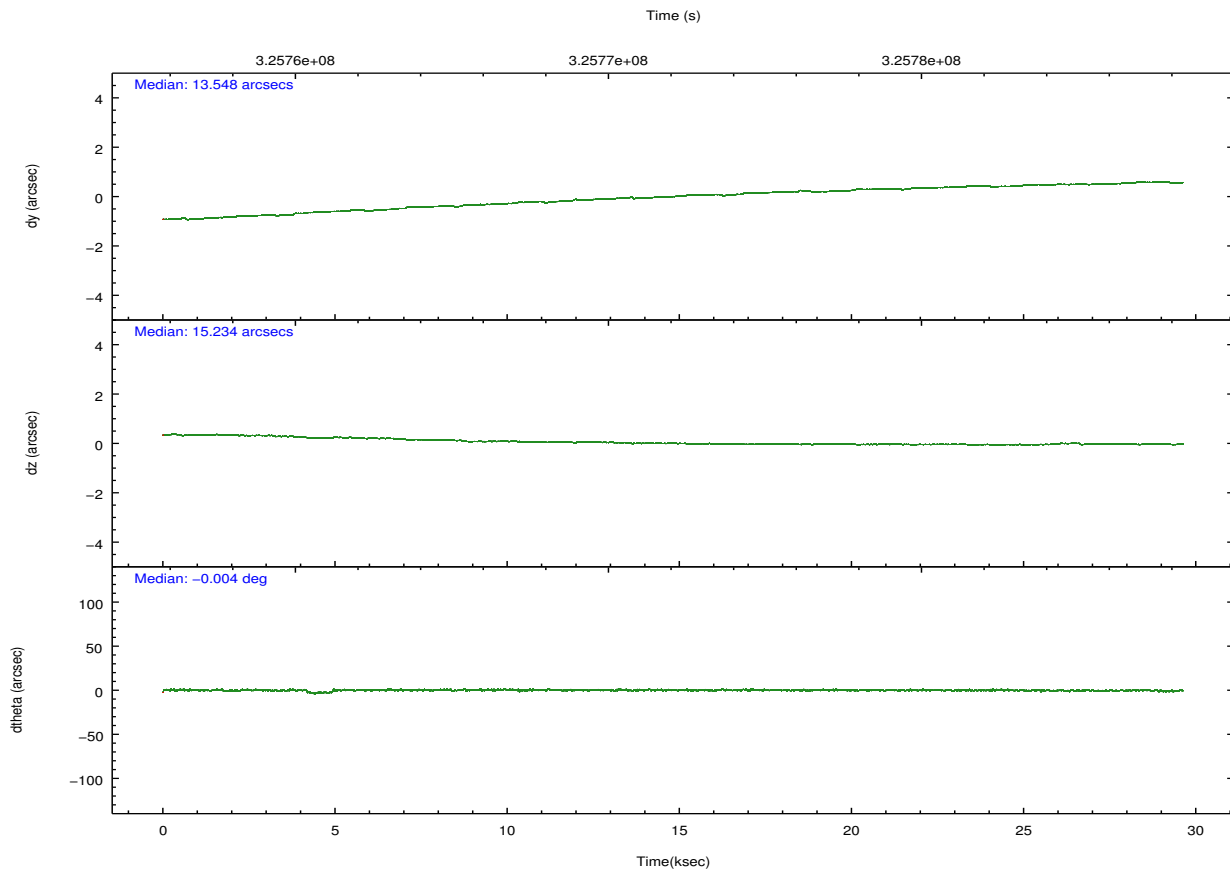
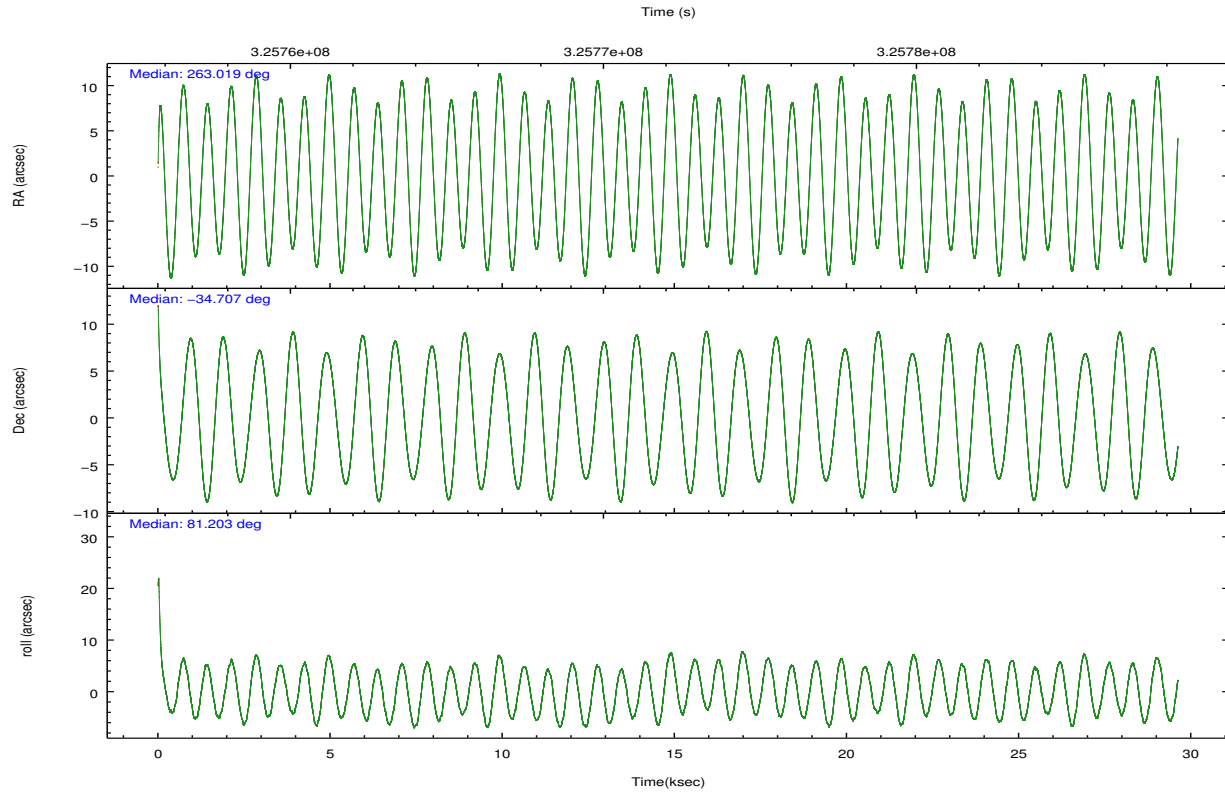
	ccd 0	ccd 1	ccd 2	ccd 3	ccd 6	ccd 7		ccd 0	ccd 1	ccd 2	ccd 3	ccd 6	ccd 7
level 1 events	224874	213375	256638	236192	233523	220271	grade 0 events	21949	17420	24636	21324	11996	12237
rejected events	185342	178603	213789	198150	205718	108499		9%	8%	9%	9%	5%	5%
rejected %	82%	83%	83%	83%	88%	49%	grade 1 events	229	181	251	547	148	342
								0%	0%	0%	0%	0%	0%
							grade 2 events	7285	6649	7737	6525	5805	23970
								3%	3%	3%	2%	2%	10%
							grade 3 events	3106	3061	3071	3006	2630	10702
								1%	1%	1%	1%	1%	4%
							grade 4 events	2985	2936	3242	2952	2561	10540
								1%	1%	1%	1%	1%	4%
							grade 5 events	6746	7473	6301	7890	7672	23185
								2%	3%	2%	3%	3%	10%
							grade 6 events	4459	4908	4437	4437	4979	54998
								1%	2%	1%	1%	2%	24%
							grade 7 events	178115	170747	206963	189511	197732	84297
								79%	80%	80%	80%	84%	38%

2.2 Compared Parameters

Parameter	Planned	Actual	Parameter	Planned	Actual
Instrument	ACIS	ACIS	Obspar format version number	7	7
Detector	ACIS-012367	ACIS-012367	Obspar file type	PREDICTED	ACTUAL
Grating	NONE	NONE	Obspar update status	NONE	UPDATED
Data mode	VFAINT	VFAINT	CCD I0 on	Y	Y
Observation mode	POINTING	POINTING	CCD I1 on	Y	Y
[deg] Pointing RA	263.031367	263.0191167104834	CCD I2 on	Y	Y
[deg] Pointing Dec	-34.732710	-34.70712632315939	CCD I3 on	Y	Y
[deg] Pointing Roll	81.010754	81.21246699669007	CCD S0 on	N	N
[mm] SIM focus pos	-0.782348	-0.7809083437167272	CCD S1 on	N	N
[mm] SIM defocus	0	0.001439871863259334	CCD S2 on	O2	Y
[mm] SIM translation stage pos	-220.402463	-220.3923077582418	CCD S3 on	O1	Y
[mm] SIM translation stage offset	-13.19	-13.20014524468789	CCD S4 on	N	N
[s] Observation start time (MET)	325757422.184000	325756272.58703	CCD S5 on	N	N
Observation start date	2008-04-28T08:09:17	2008-04-28T07:51:12	Number of optional ACIS chips dropped	0	0
[s] Observation end time (MET)	325786877.184000	325787108.68854	On-chip summing requested	N	N
Observation end date	2008-04-28T16:20:12	2008-04-28T16:25:08	Subarray requested	NONE	NONE
Read mode	TIMED	TIMED	Alternating exposures requested	N	N
			[s] Primary exposure time	0.000000	3.2

2.3 Aspect



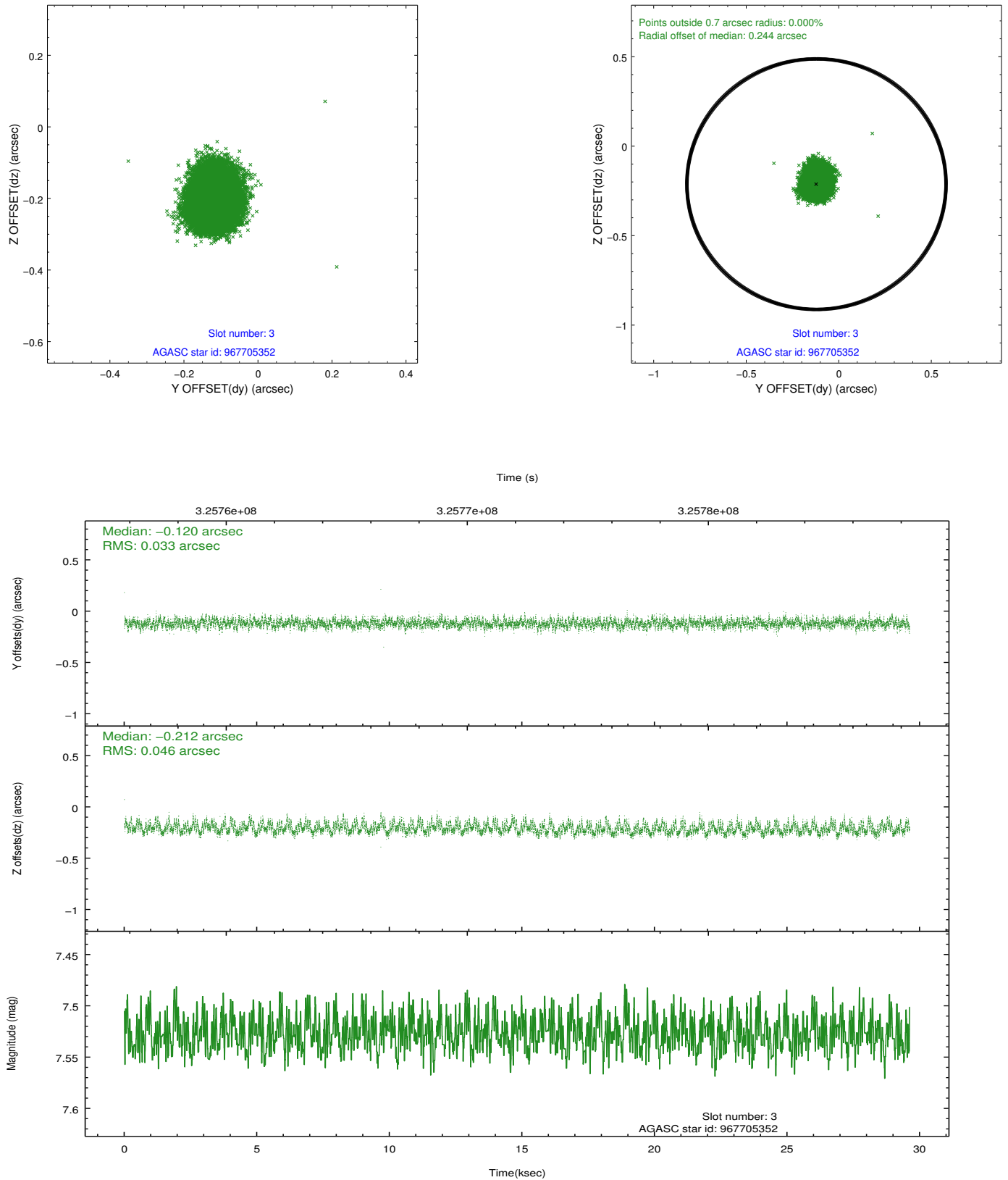


Slot Statistics

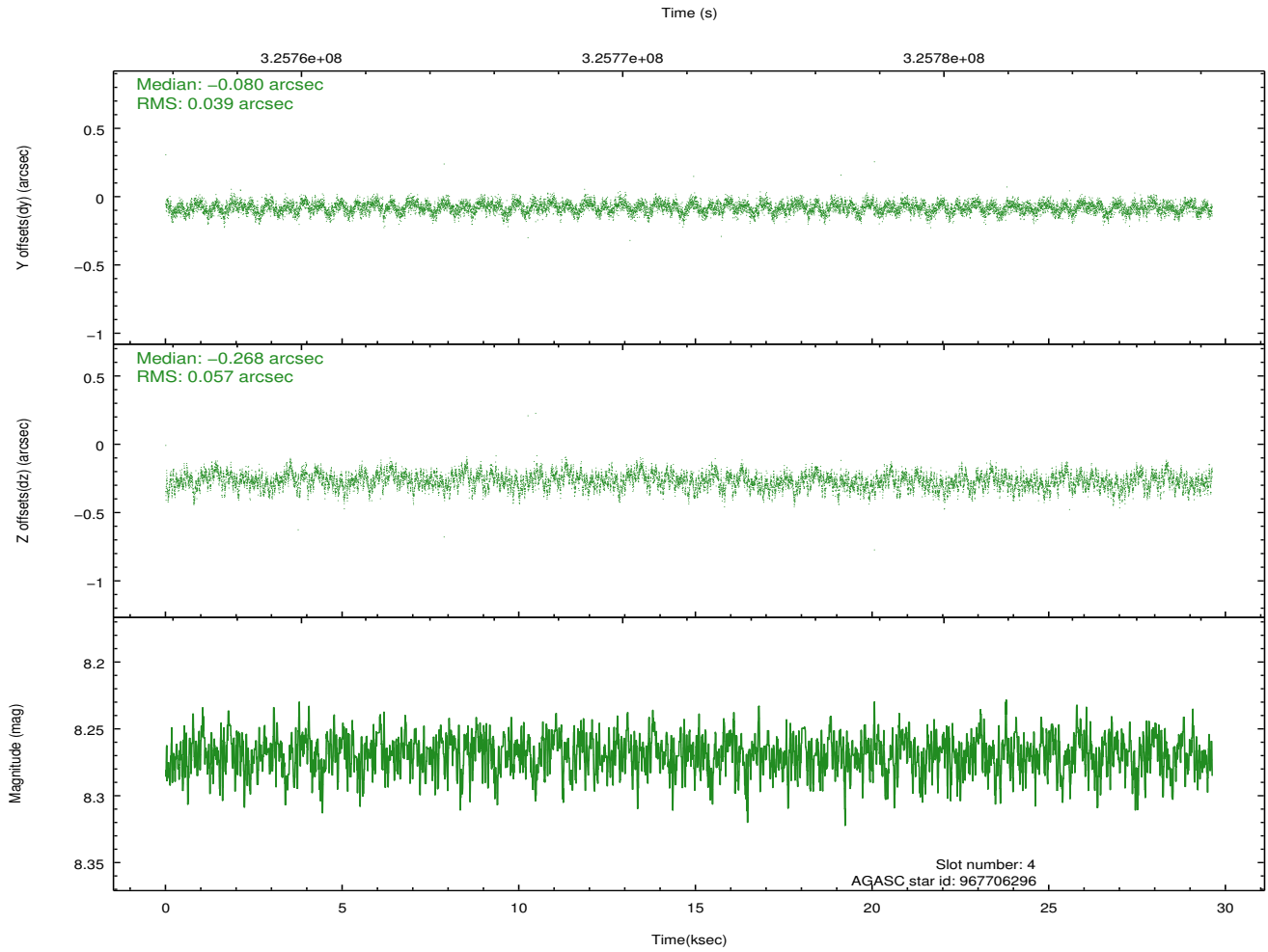
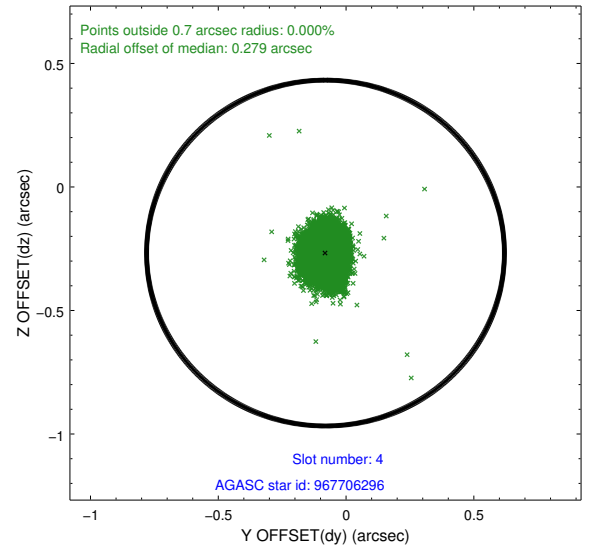
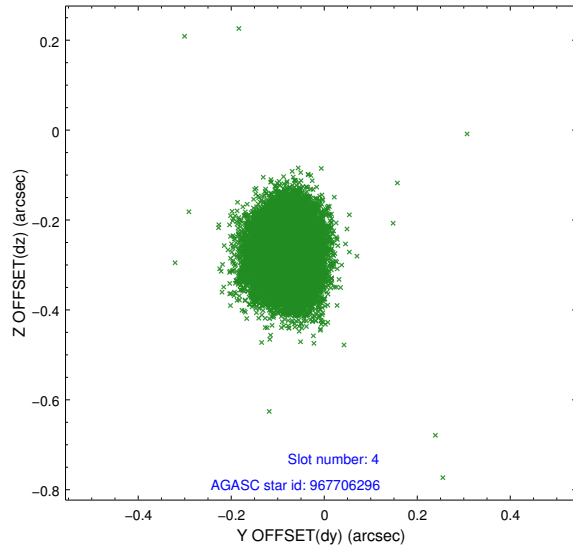
slot	status	id	mag	n_pts	med_dy	med_dz	dr1	dr2	ra	dec	mean_y	mean_z
0	FID	ACIS-I-1	6.99	7224	0.175	-0.221	0.014	0.026	0.000000	0.000000	925.98	-1110.15
1	FID	ACIS-I-4	6.93	7224	0.031	0.093	0.012	0.019	0.000000	0.000000	2145.12	791.58
2	FID	ACIS-I-5	7.00	7225	-0.304	0.199	0.011	0.021	0.000000	0.000000	-1822.45	787.85
3	GUIDE	967705352	7.53	14448	-0.120	-0.212	0.060	0.096	262.627740	-34.539041	499.26	1290.71
4	GUIDE	967706296	8.27	14448	-0.080	-0.268	0.073	0.119	262.582774	-34.480498	685.94	1456.24
5	GUIDE	967708376	9.20	14405	0.329	0.165	0.100	0.157	263.159741	-35.002821	-900.77	-525.74
6	GUIDE	967837824	7.47	14449	-0.243	0.125	0.048	0.078	263.710184	-34.276828	1930.17	-1738.79
7	GUIDE	967839136	8.43	14440	0.115	0.193	0.074	0.125	263.702969	-34.908984	-322.66	-2058.50

2.4 Star Slots

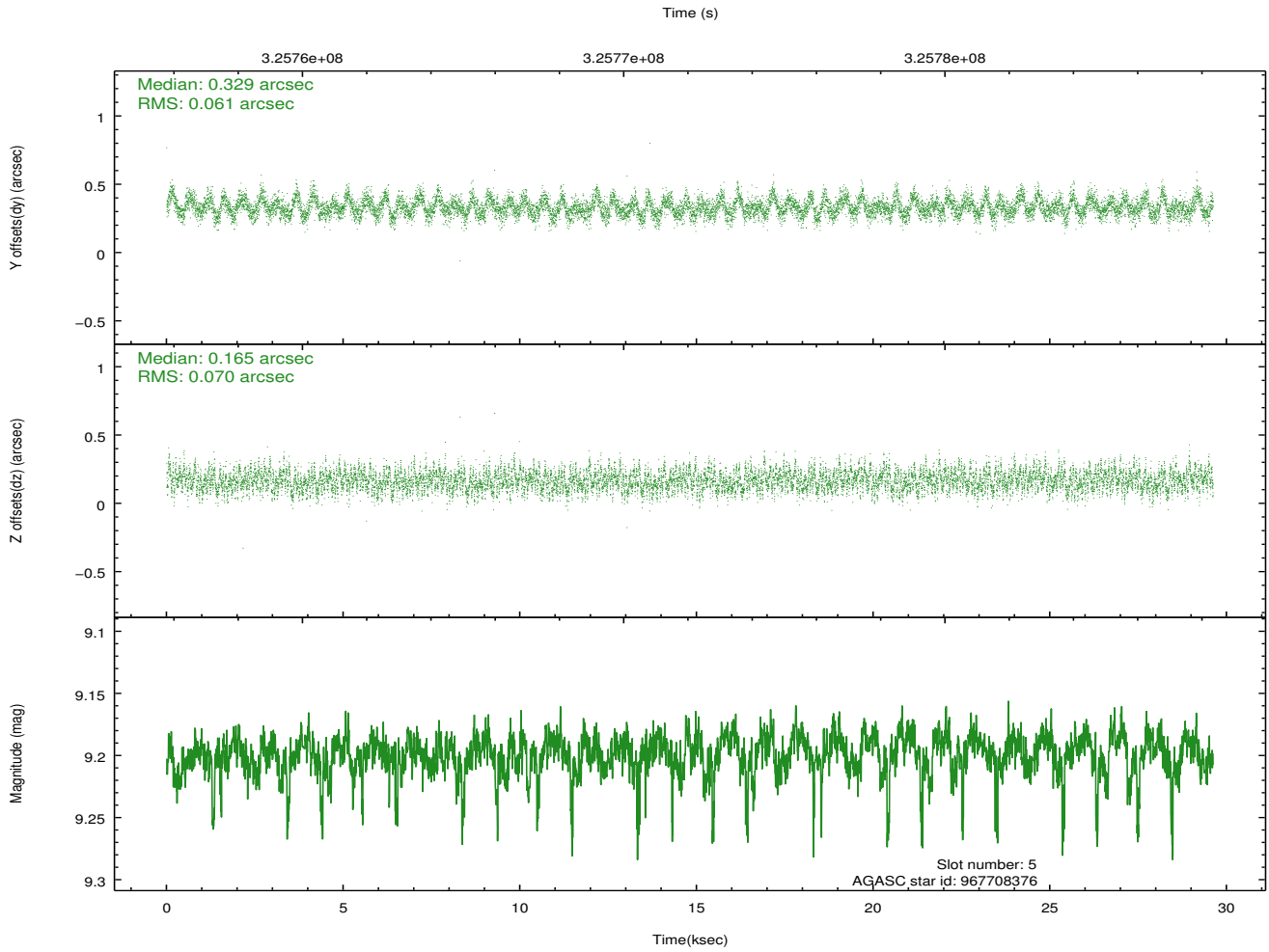
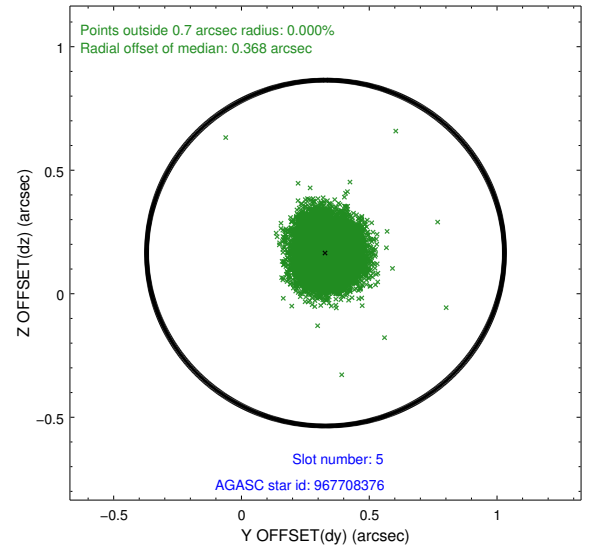
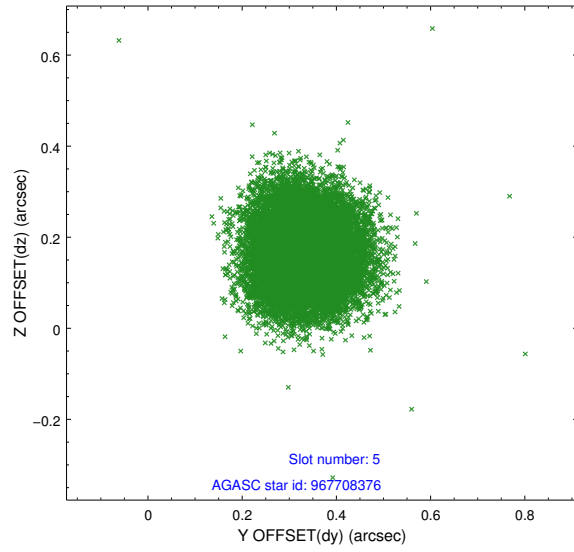
2.4.1 Slot 3



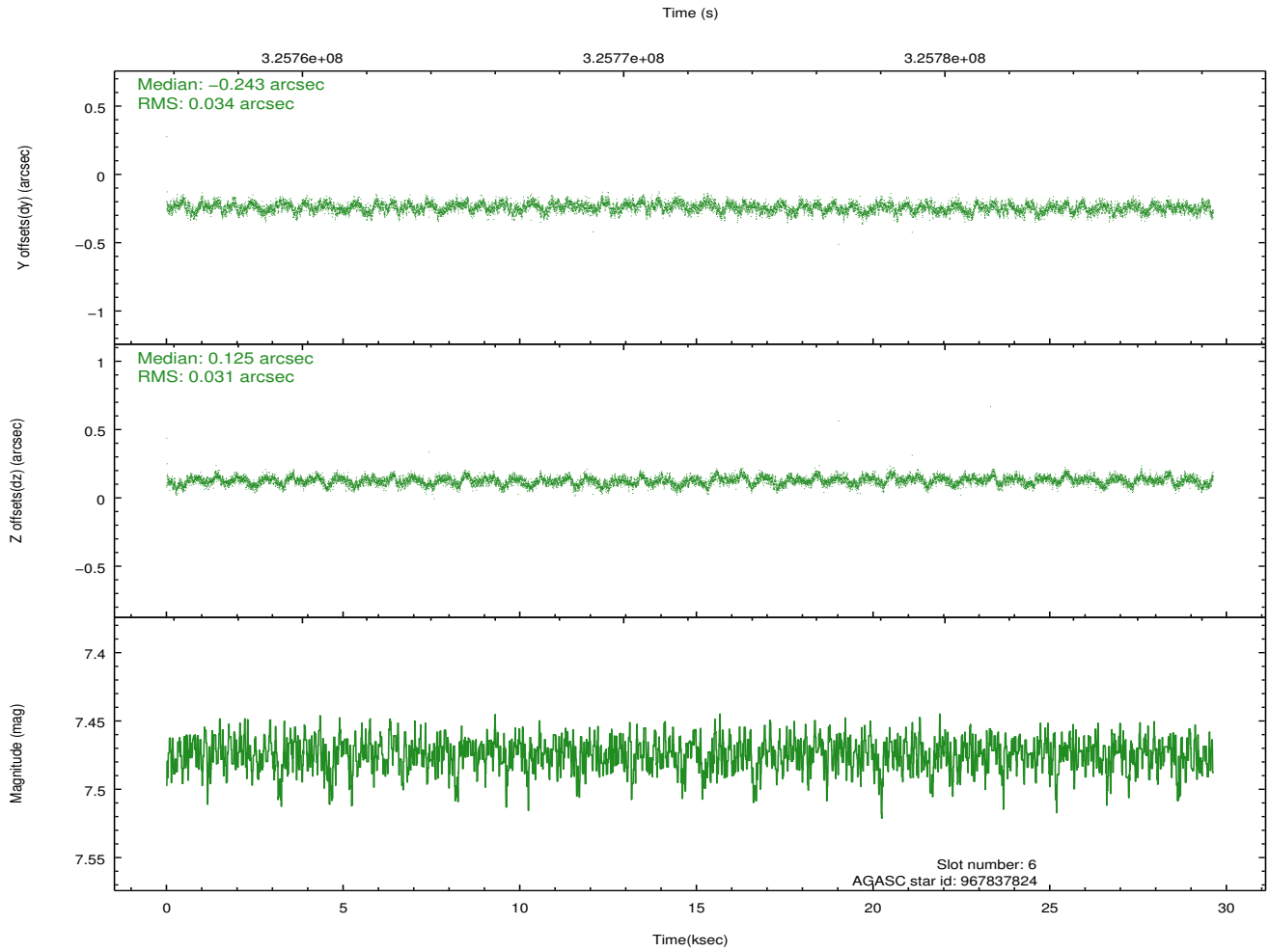
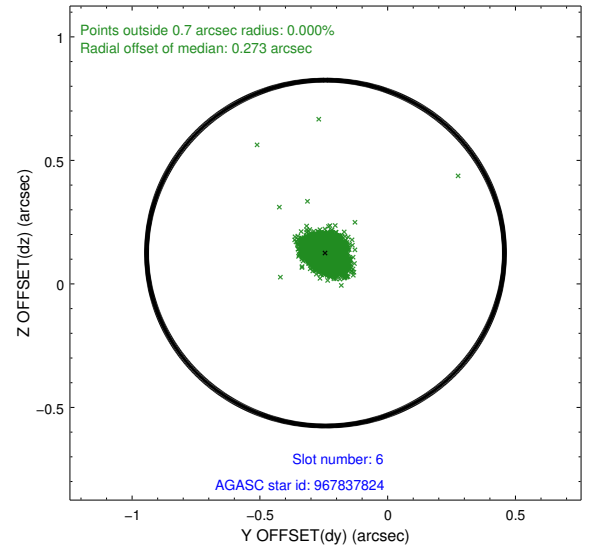
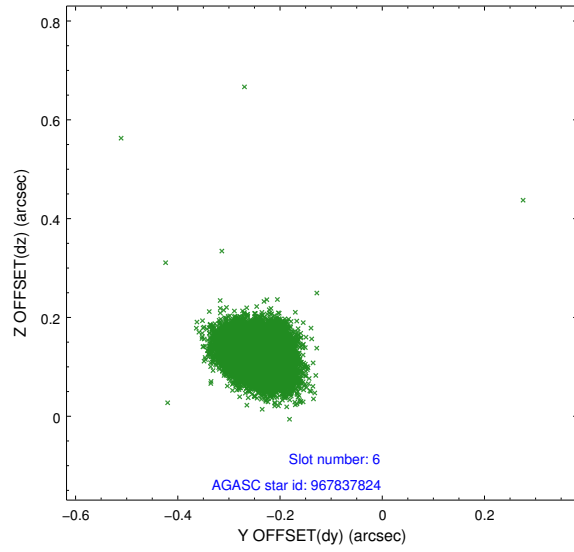
2.4.2 Slot 4



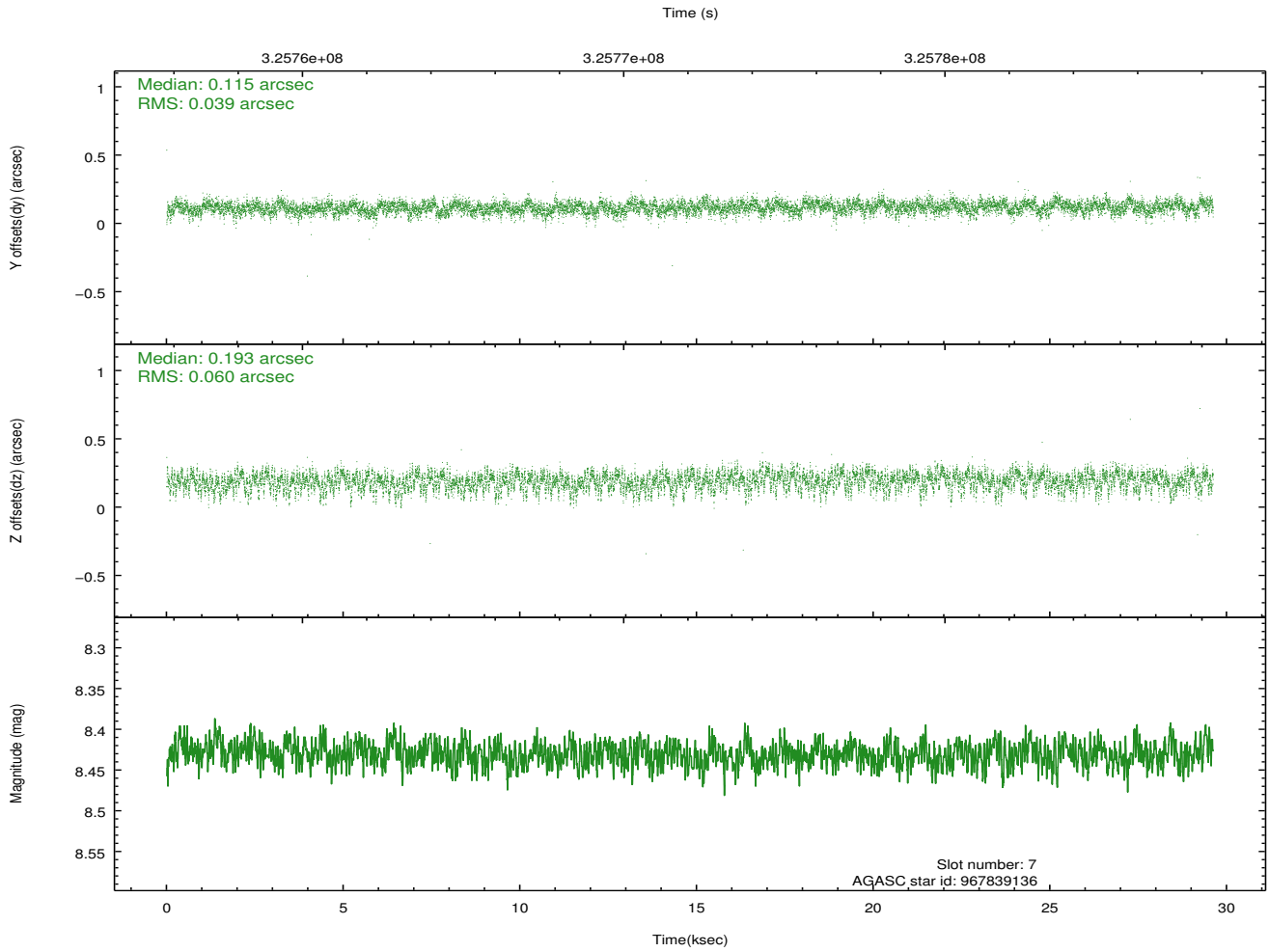
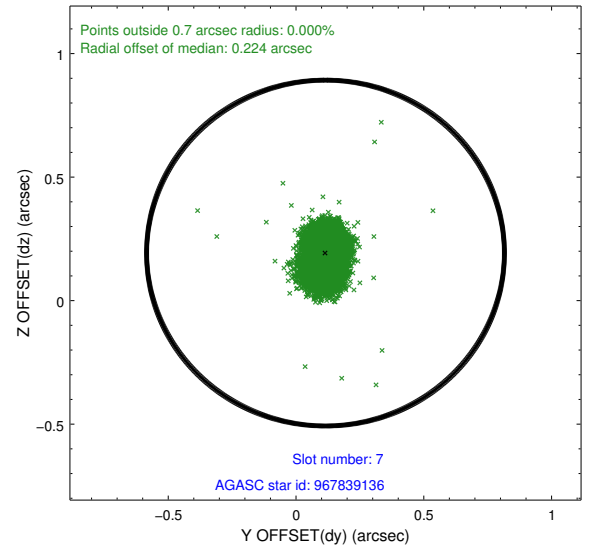
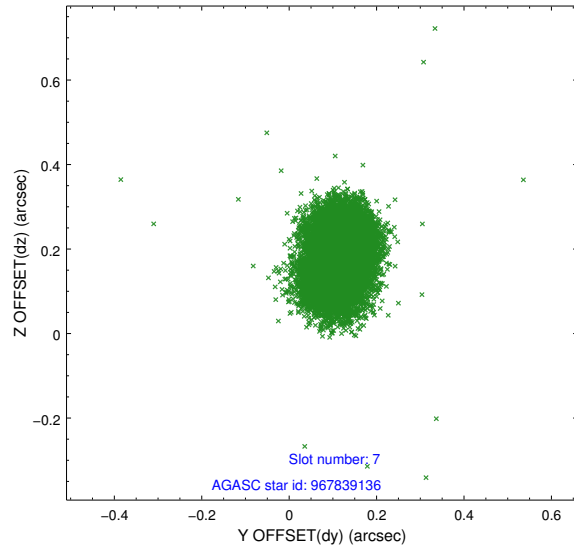
2.4.3 Slot 5



2.4.4 Slot 6

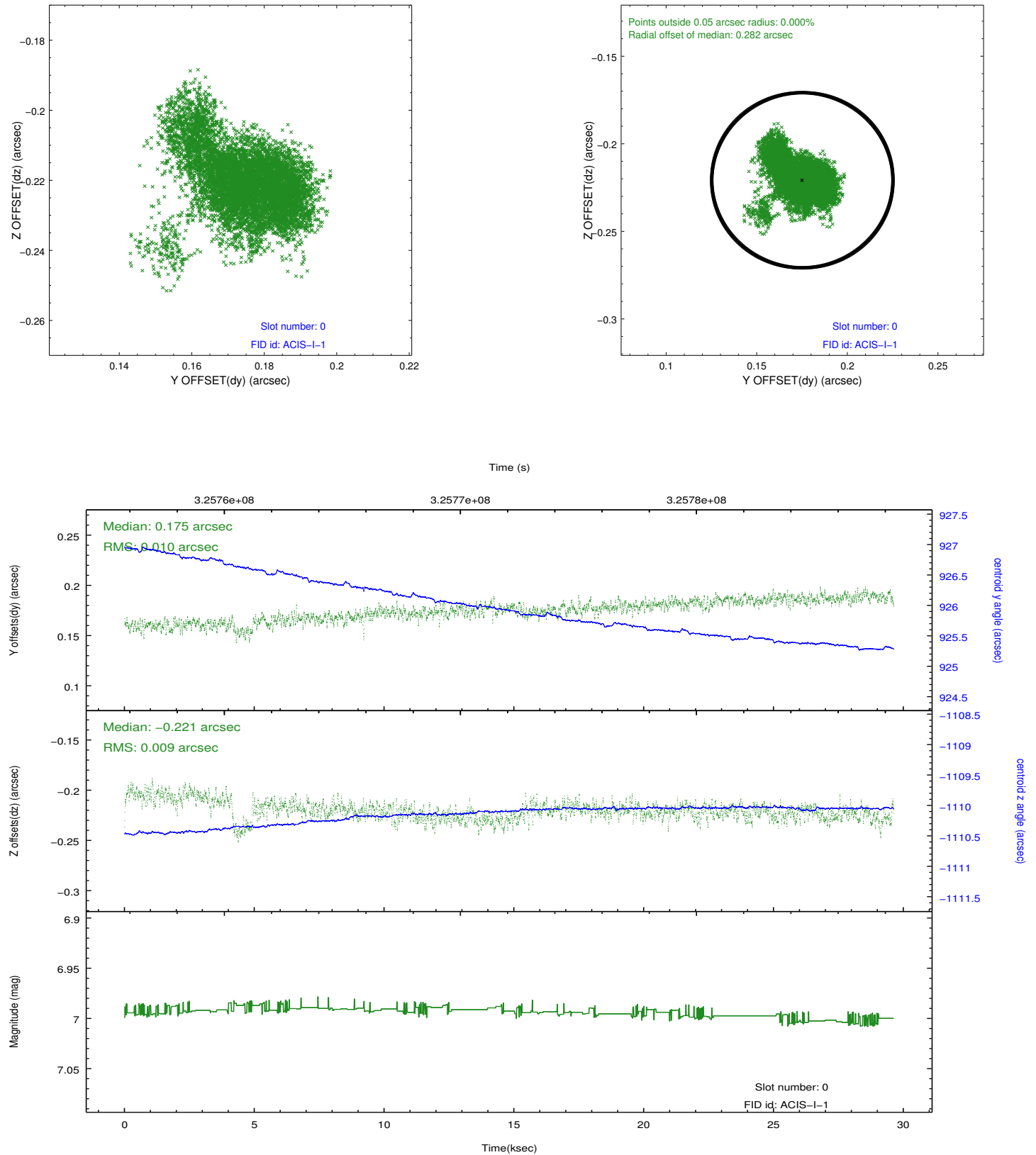


2.4.5 Slot 7

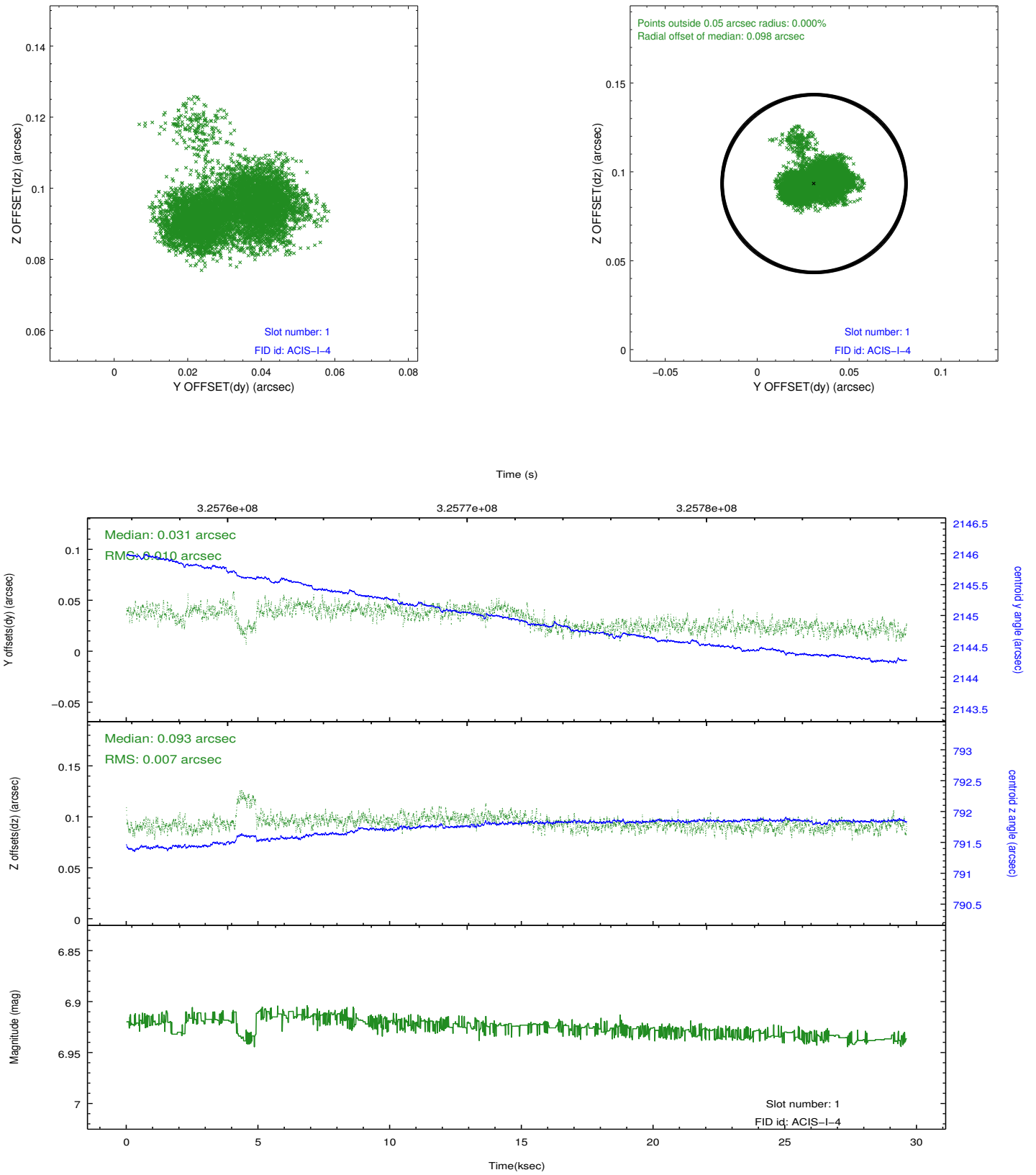


2.5 FID Slots

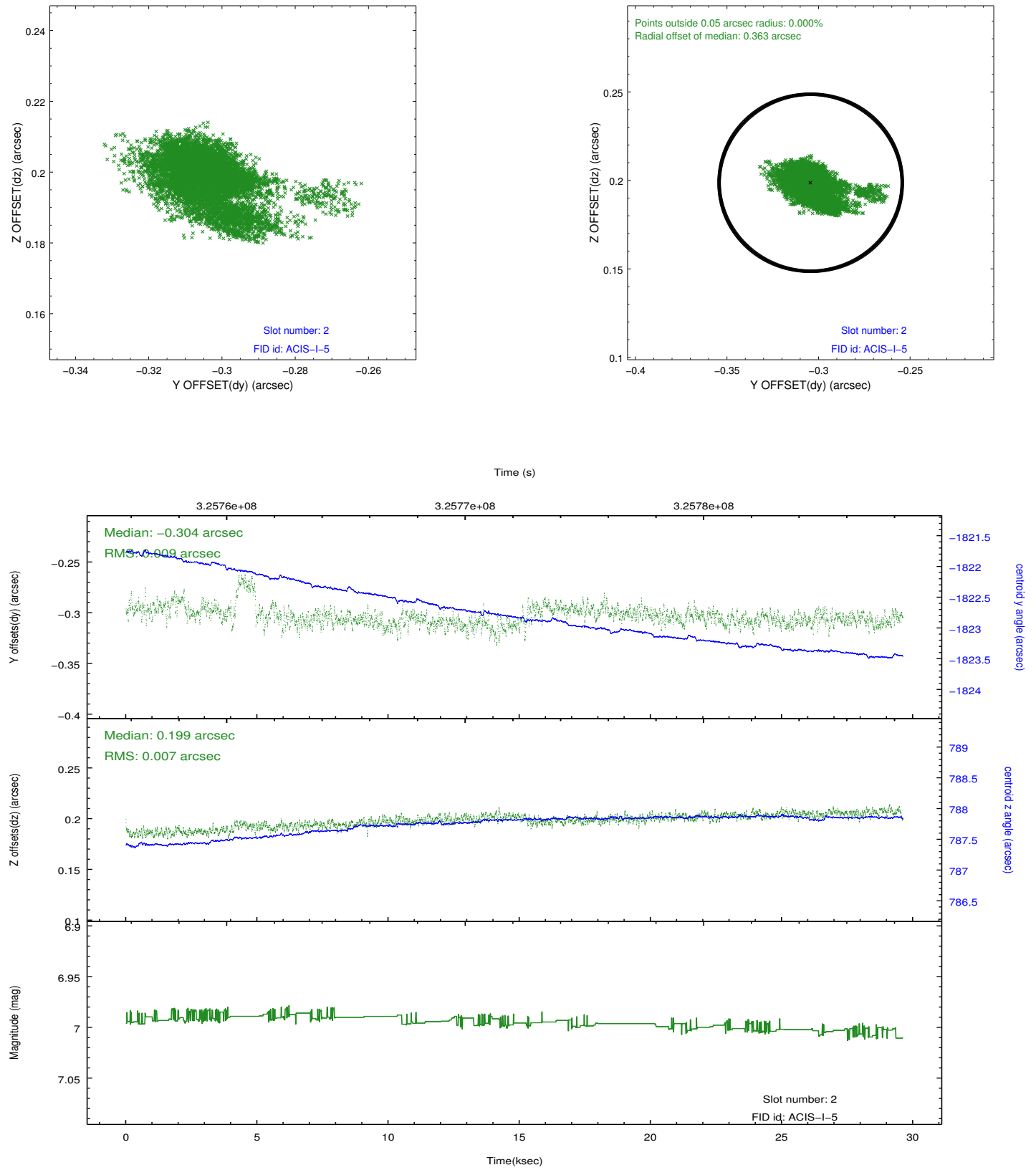
2.5.1 Slot 0



2.5.2 Slot 1



2.5.3 Slot 2



A Summary

A.1 Status

V&V Scientist	Jen Lauer
V&V Date (YYYY-MM-DD)	2012.05.15
V&V Edition	1
V&V Disposition and Status	OK
V&V Charge Time	29.6063588

A.2 Comments

Roll preference met.