

V&V Reference Report

L2 ASCDS Version : 8.4.4

Observation 9114 - L2 Version 3
Chandra X-Ray Center

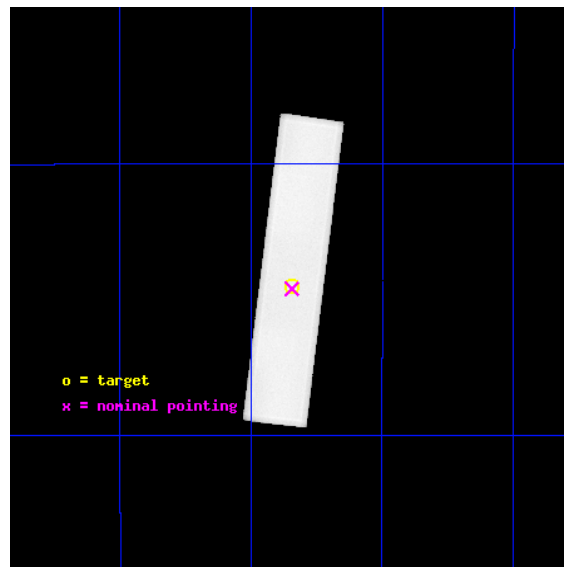
L2 Processing Date : Aug 12 2012

Contents

1	Front	2
2	OBI	3
2.1	OBI	3
2.1.1	Images	3
2.1.2	Parameters	4
2.1.3	Events	4
2.2	Compared Parameters	5
2.3	Aspect	6
2.4	Star Slots	9
2.4.1	Slot 3	9
2.4.2	Slot 4	10
2.4.3	Slot 5	11
2.4.4	Slot 6	12
2.4.5	Slot 7	13
2.5	FID Slots	14
2.5.1	Slot 0	14
2.5.2	Slot 1	15
2.5.3	Slot 2	16
A	Summary	17
A.1	Status	17
A.2	Comments	17

1 Front

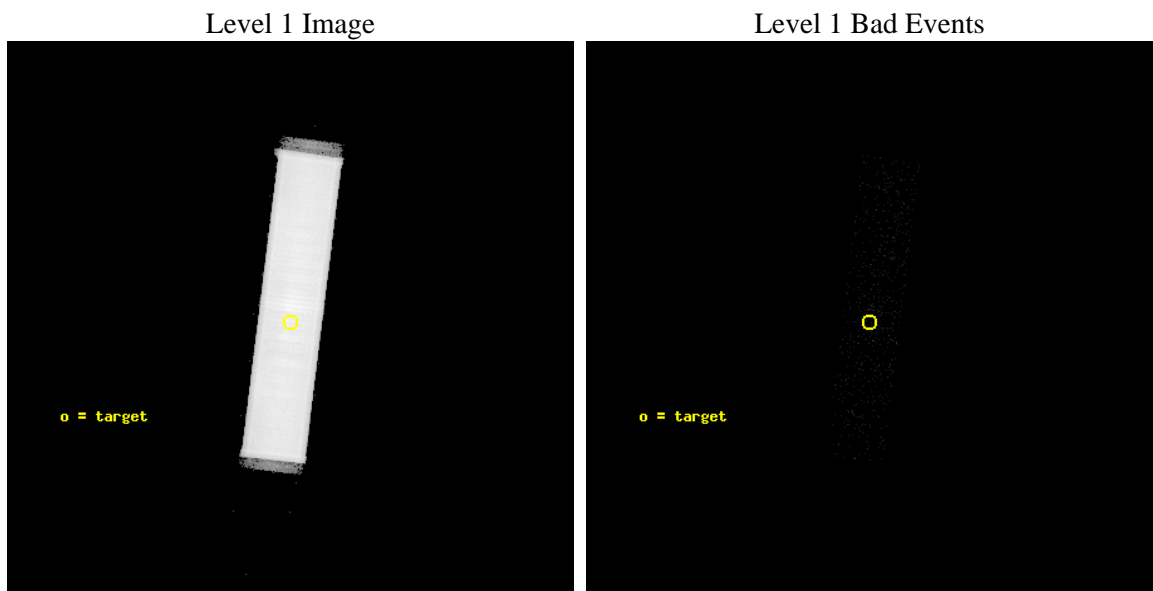
seq_num	500976	Sequence number
obs_id	9114	Observation id
title	A Search for X-ray Pulsations from Rotation-Powered Millisecond Pulsars	Proposal title
observer	Dr. Kent Wood	Principal investigator
object	PSR J1843-1113	Source name
ra_targ	280.921667	Observer's specified target RA [deg]
dec_targ	-11.225278	Observer's specified target Dec [deg]
ra_nom	280.92217383934	Nominal RA [deg]
dec_nom	-11.230093493133	Nominal Dec [deg]
roll_nom	277.06744140288	Nominal Roll [deg]
revision	3	Processing version of data
ontime	20132.025993228	[s]
livetime	20000.420007705	Ontime multiplied by DTCOR
l2events	1466771	Number of level 2 events



2 OBI

2.1 OBI

2.1.1 Images



2.1.2 Parameters

obi_num	0	Obi number	sched_exp_time	20000.000000	[s] Scheduled observation exposure time
ascdsver	8.4.5	Processing system revision	ontime	20132.025993228	[s]
caldsver	4.5.1.1	 	l1events	1994920	Number of level 1 events
date	2012-08-12T22:21:55	Date and time of file creation			
revision	3	Processing version of data			

2.1.3 Events

Level 1 Events

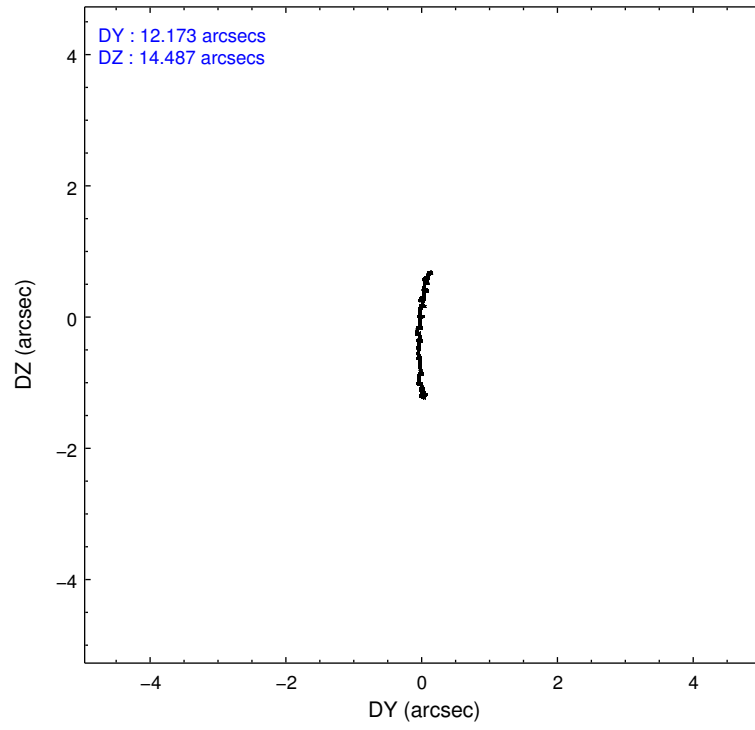
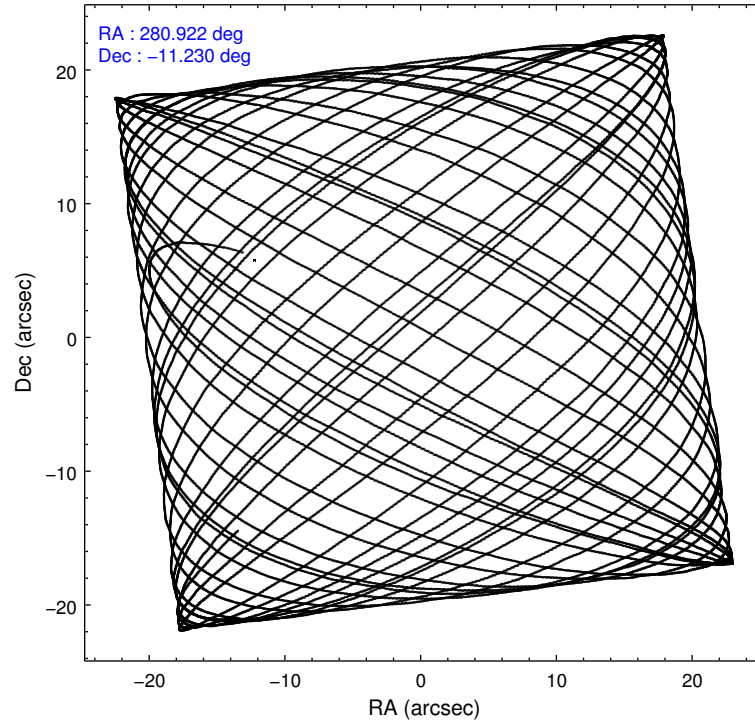
	segment 1	segment 2	segment 3
level 1 events	1761	1993149	10
rejected events	94	109929	8
rejected %	5%	5%	80%

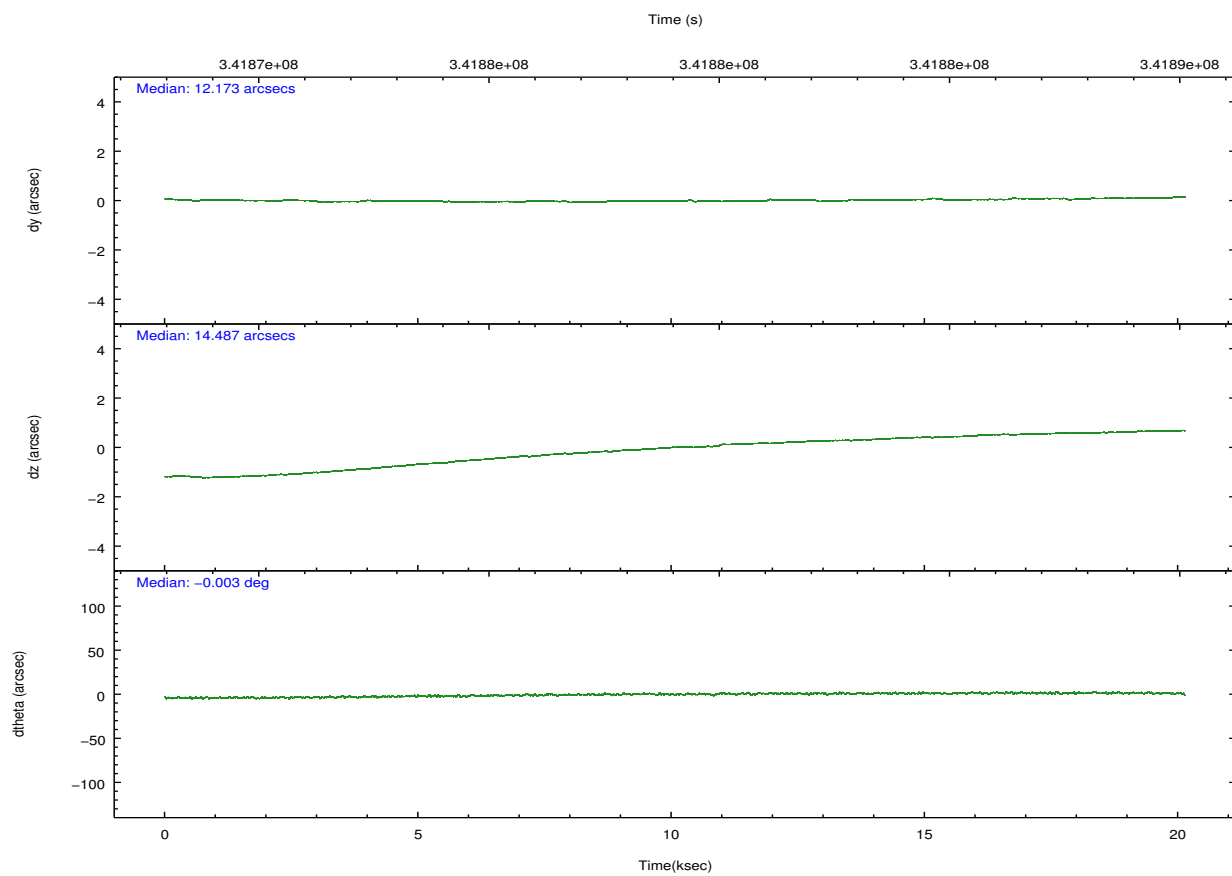
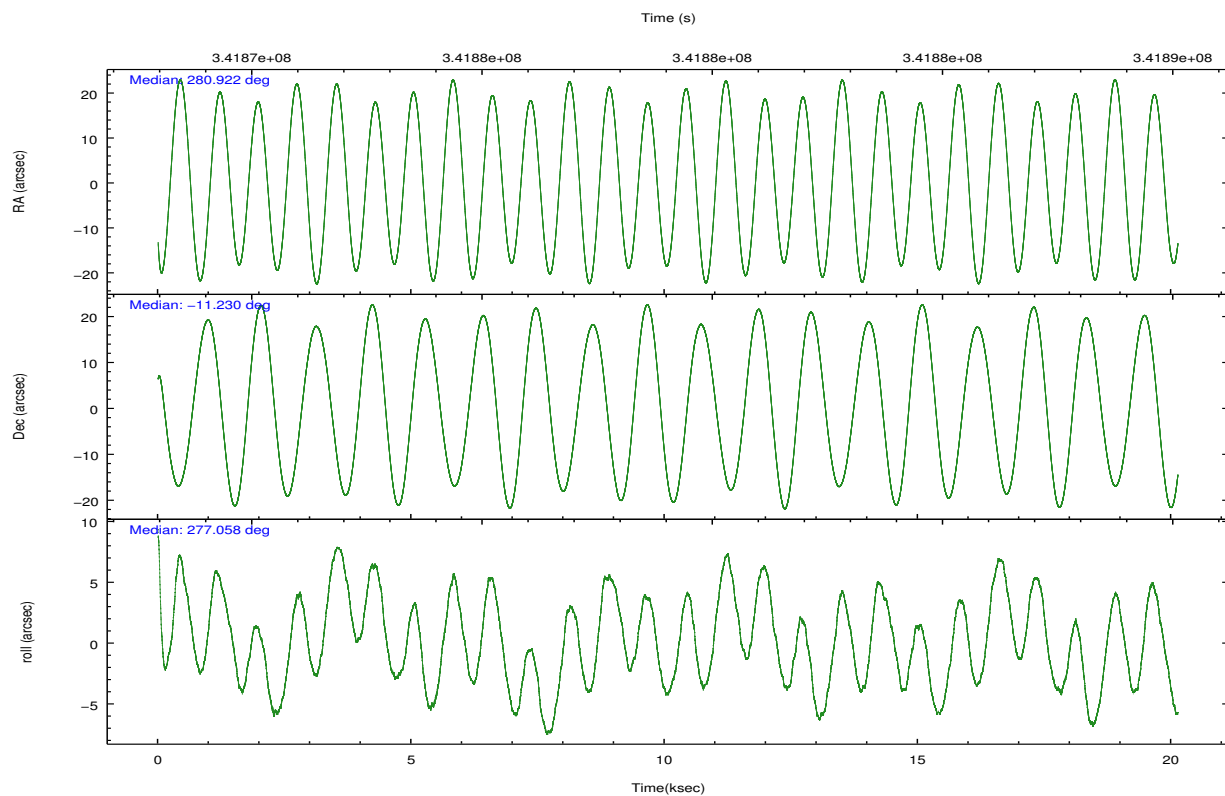
2.2 Compared Parameters

Parameter	Planned	Actual
Instrument	HRC	HRC
Detector	HRC-S	HRC-S
Grating	NONE	NONE
Data mode	OBSERVING	OBSERVING
Observation mode	POINTING	POINTING
[deg] Pointing RA	280.903407	280.9221738393419
[deg] Pointing Dec	-11.207994	-11.23009349313254
[deg] Pointing Roll	276.996448	277.0674414028847
[mm] SIM focus pos	-1.533336	-1.526339935833849
[mm] SIM defocus	7.710433287538843e-07	0.006996703570447904
[mm] SIM translation stage pos	250.455976	250.466033080201
[mm] SIM translation stage offset	0	-0.01005468664627074
[s] Observation start time (MET)	341869105.184000	341867862.23654
Observation start date	2008-10-31T19:37:20	2008-10-31T19:17:42
[s] Observation end time (MET)	341889105.184000	341890268.73764
Observation end date	2008-11-01T01:10:40	2008-11-01T01:31:08

Parameter	Planned	Actual
Obspar format version number	7	7
Obspar file type	PREDICTED	ACTUAL
Obspar update status	NONE	UPDATED

2.3 Aspect



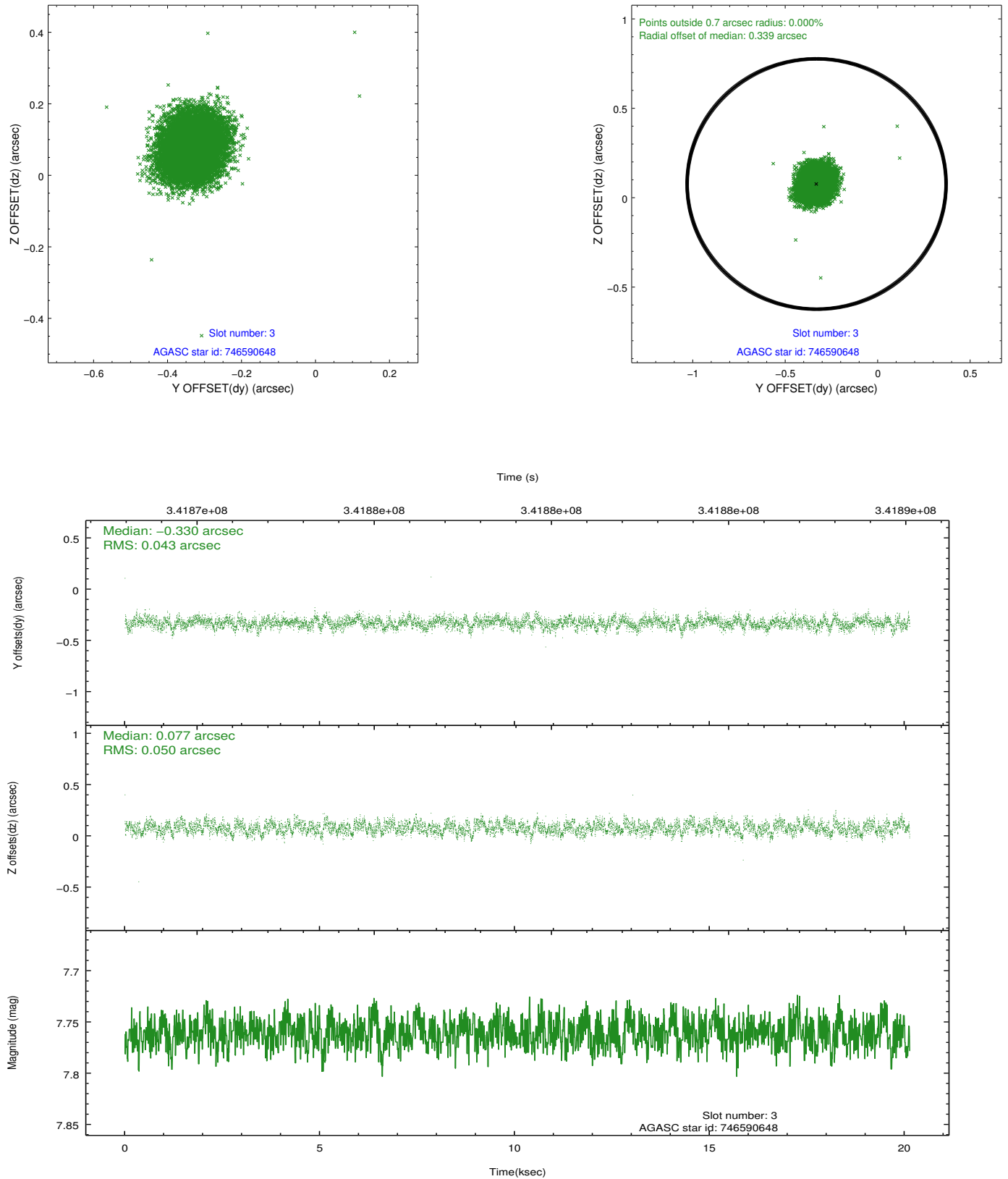


Slot Statistics

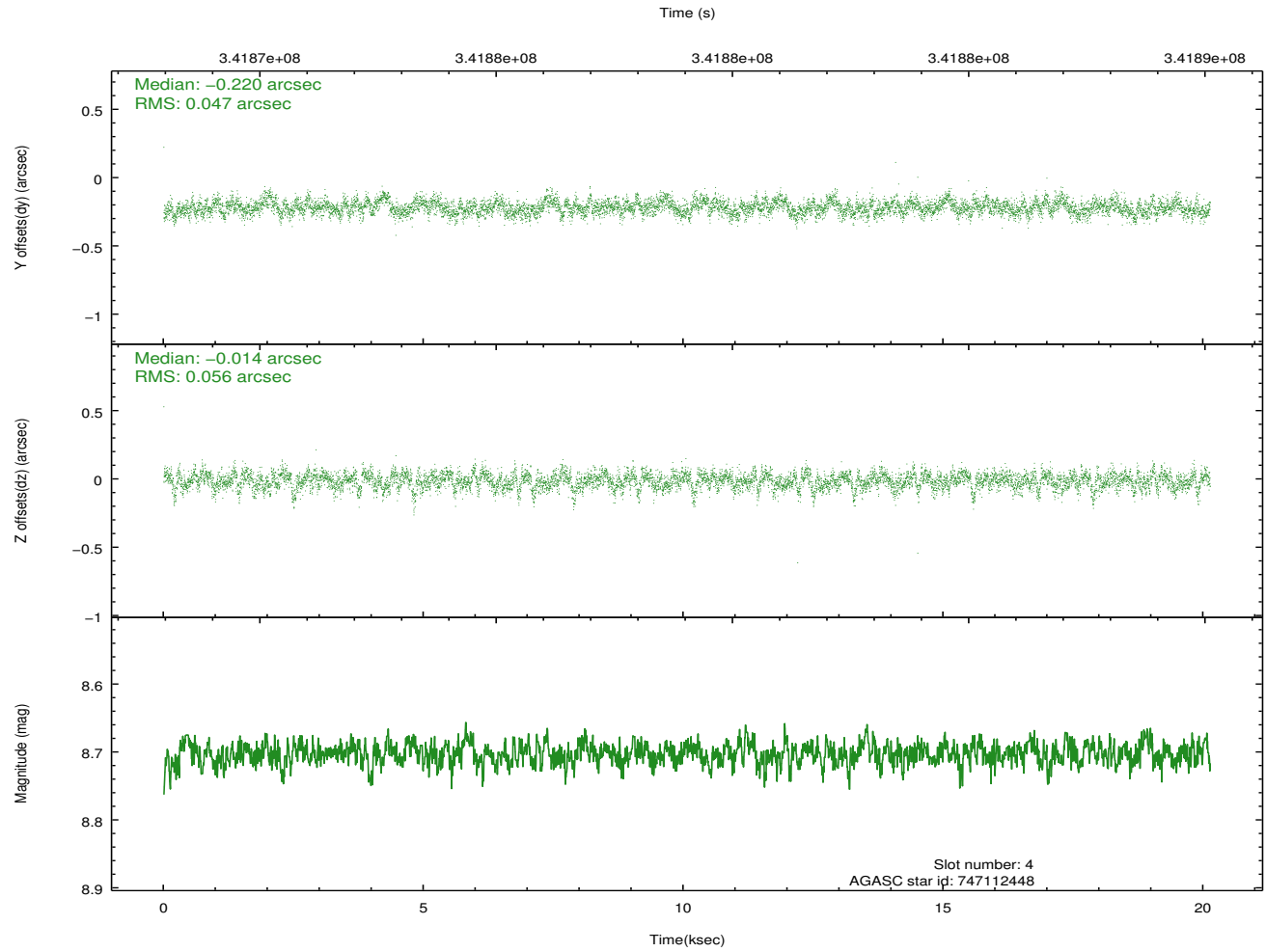
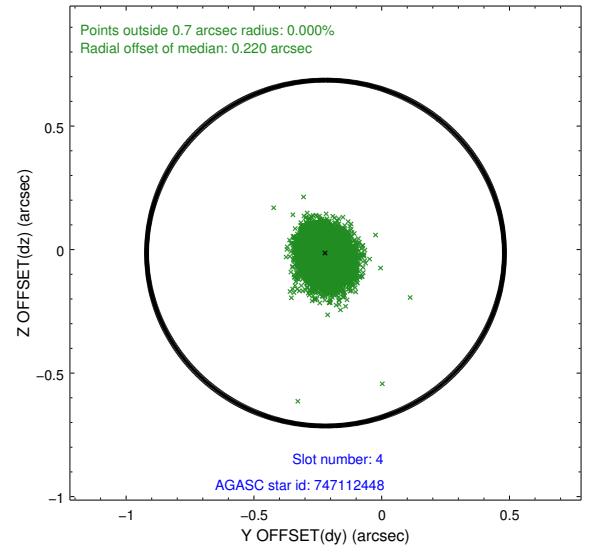
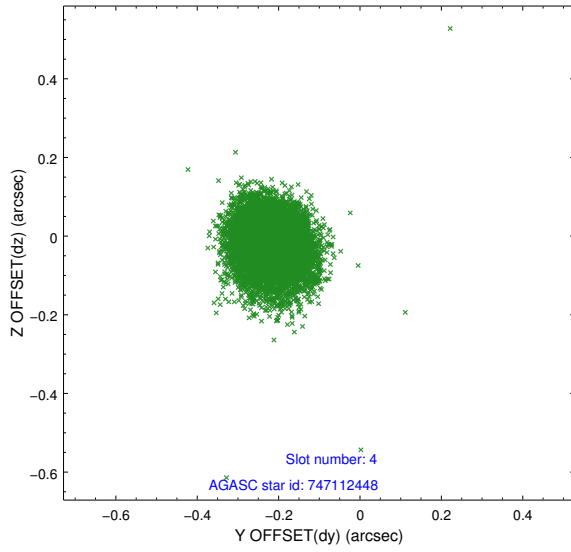
slot	status	id	mag	n_pts	med_dy	med_dz	dr1	dr2	ra	dec	mean_y	mean_z
0	FID	HRC-S-1	7.06	4911	0.083	-0.211	0.016	0.052	0.000000	0.000000	-1166.50	-463.20
1	FID	HRC-S-2	7.04	4910	0.250	-0.132	0.007	0.013	0.000000	0.000000	1233.09	-455.87
2	FID	HRC-S-3	7.05	4910	0.056	0.041	0.018	0.057	0.000000	0.000000	-1168.99	566.45
3	GUIDE	746590648	7.76	9819	-0.330	0.077	0.071	0.111	280.928306	-10.732974	-1686.46	295.67
4	GUIDE	747112448	8.70	9816	-0.220	-0.014	0.076	0.127	280.611895	-11.424760	649.79	-1115.73
5	GUIDE	747112488	8.94	9814	0.264	-0.183	0.089	0.143	280.422751	-11.367966	367.22	-1754.08
6	GUIDE	747116872	7.40	9820	0.206	0.022	0.070	0.112	281.268126	-11.455028	1040.53	1169.12
7	GUIDE	747116952	9.14	9734	0.078	0.104	0.110	0.173	280.912296	-11.495248	1030.80	-94.30

2.4 Star Slots

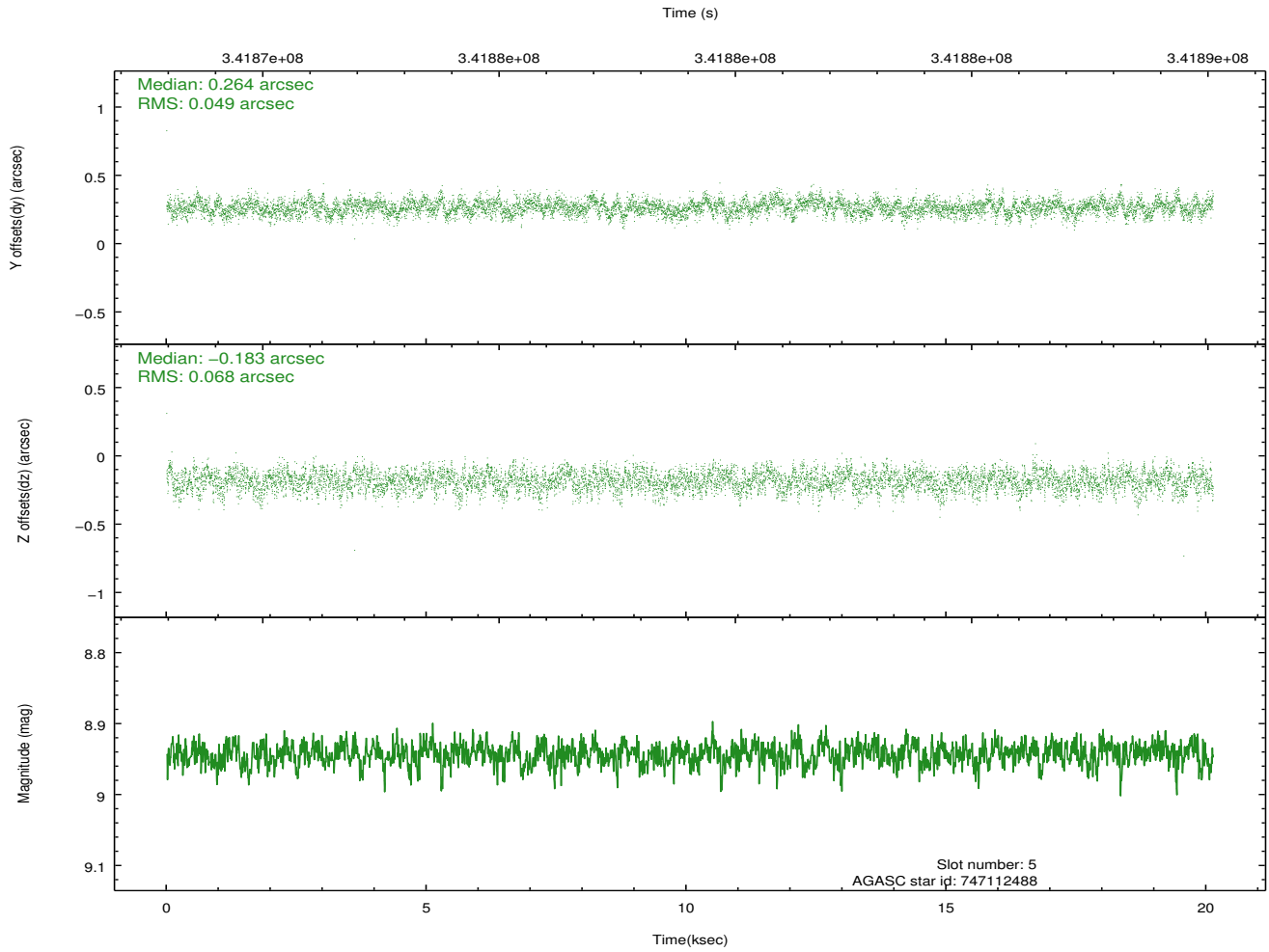
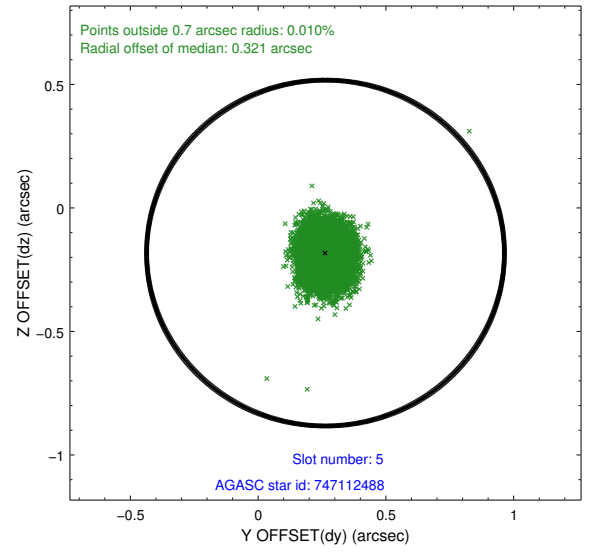
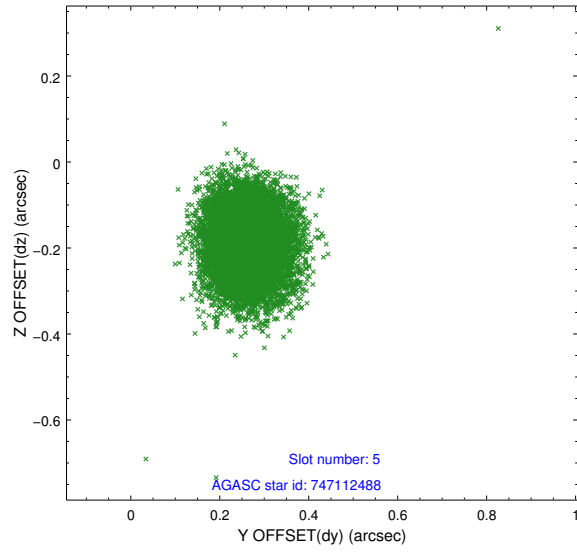
2.4.1 Slot 3



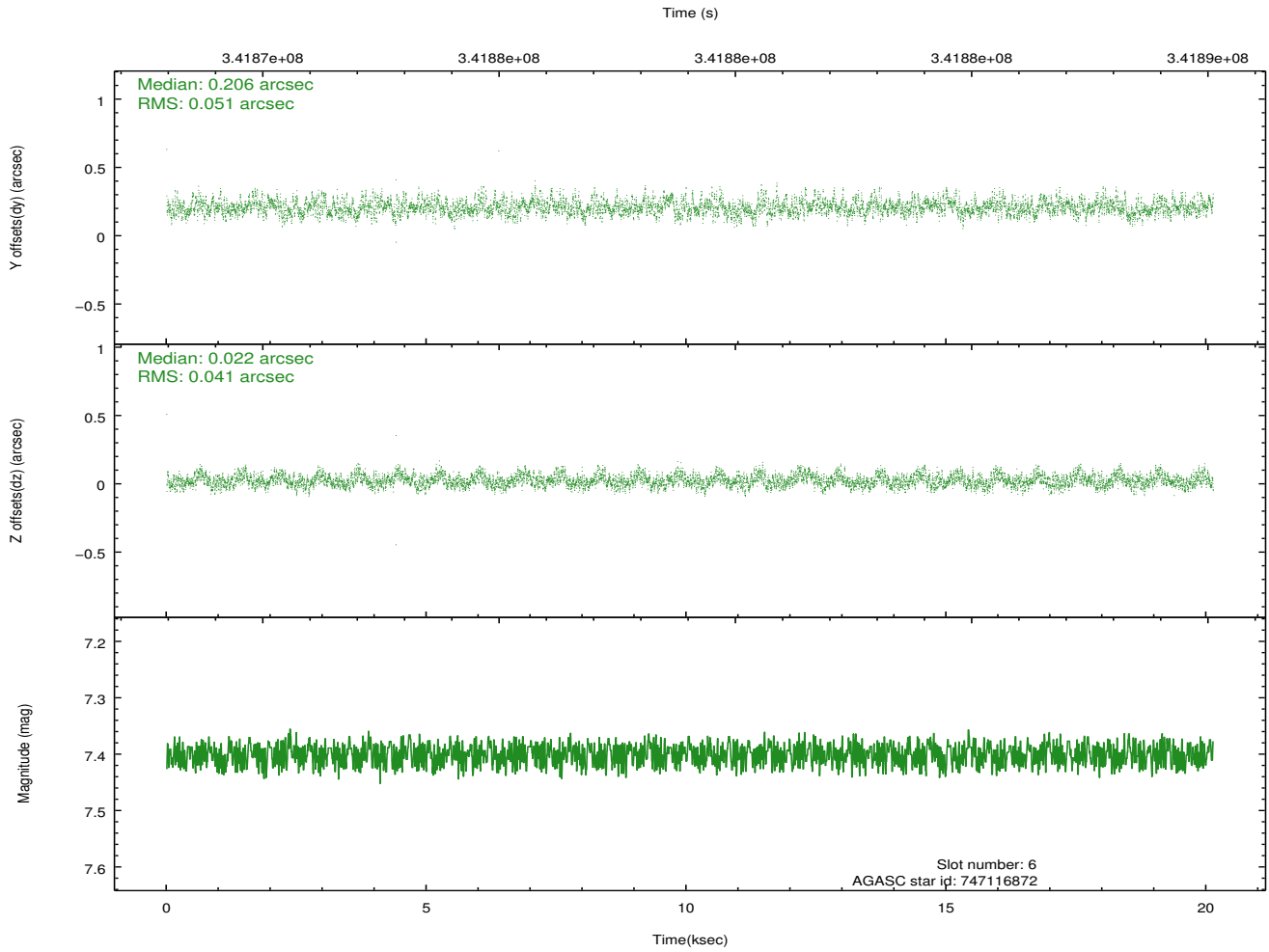
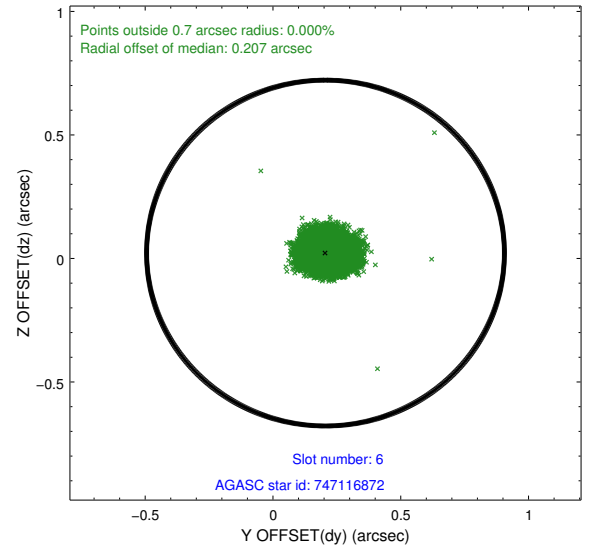
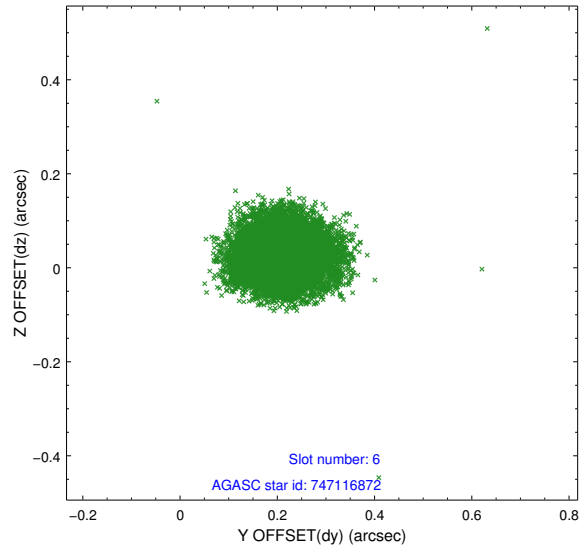
2.4.2 Slot 4



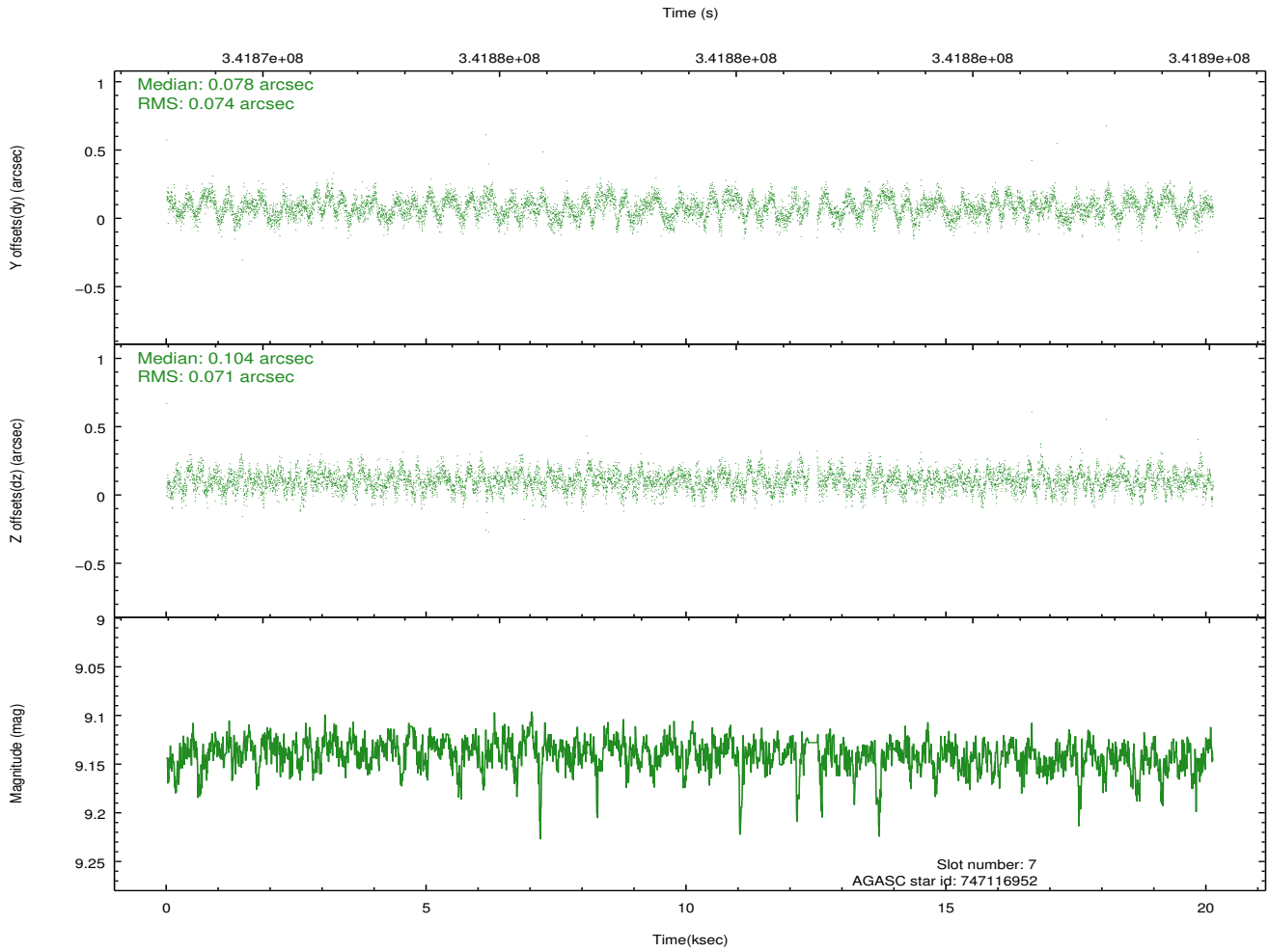
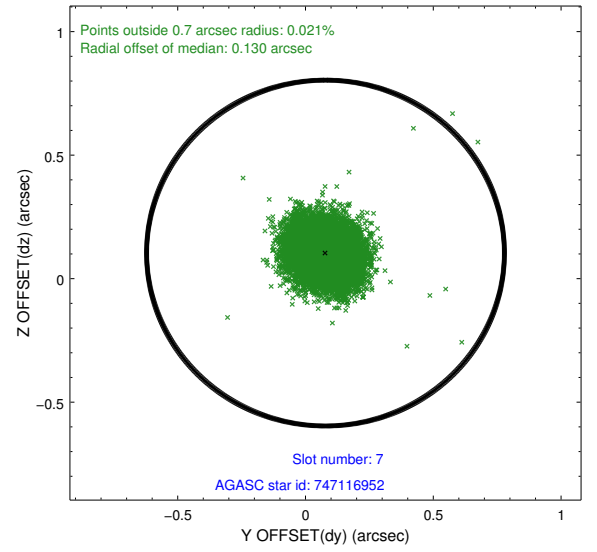
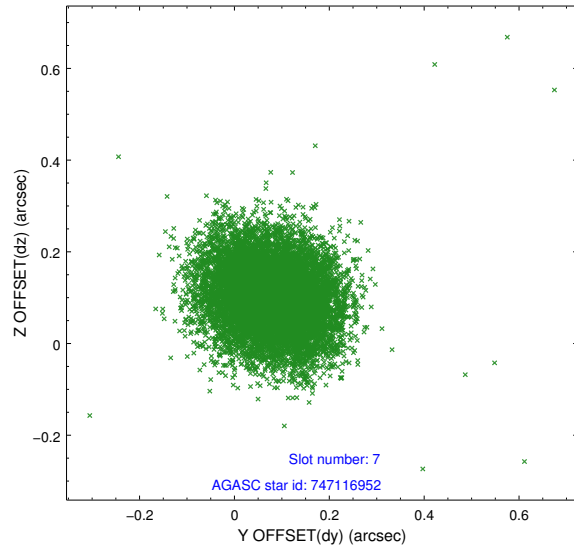
2.4.3 Slot 5



2.4.4 Slot 6

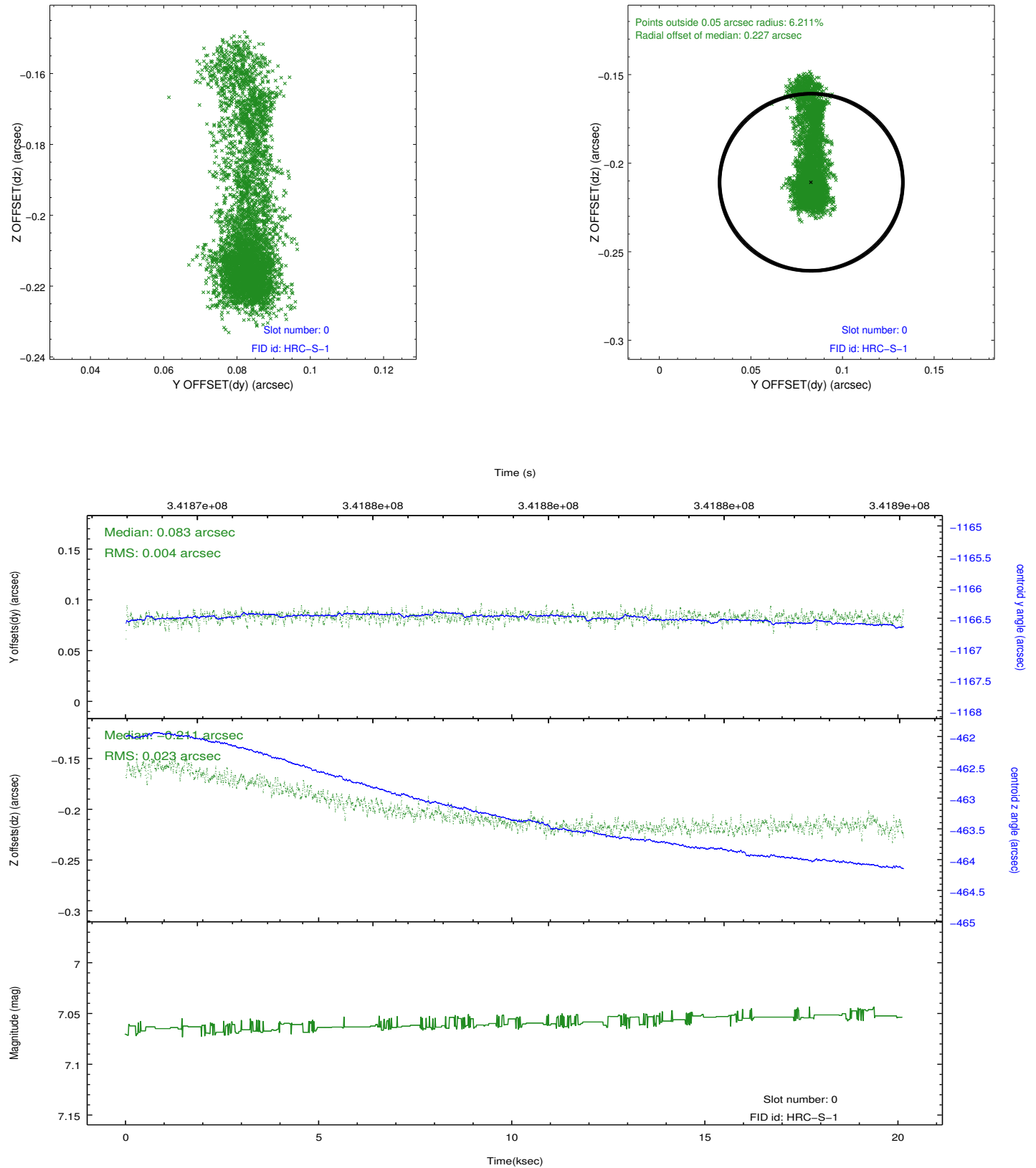


2.4.5 Slot 7

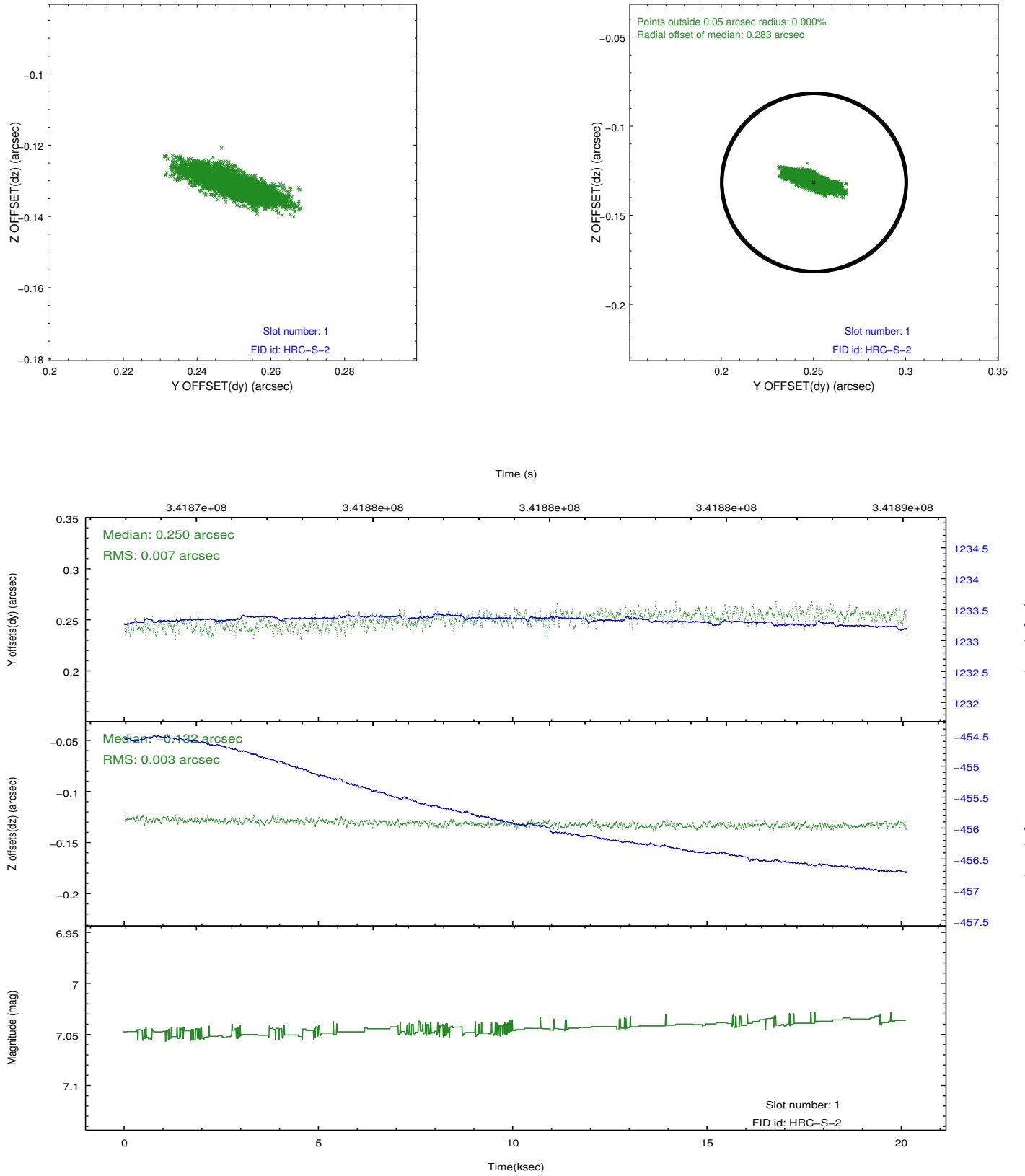


2.5 FID Slots

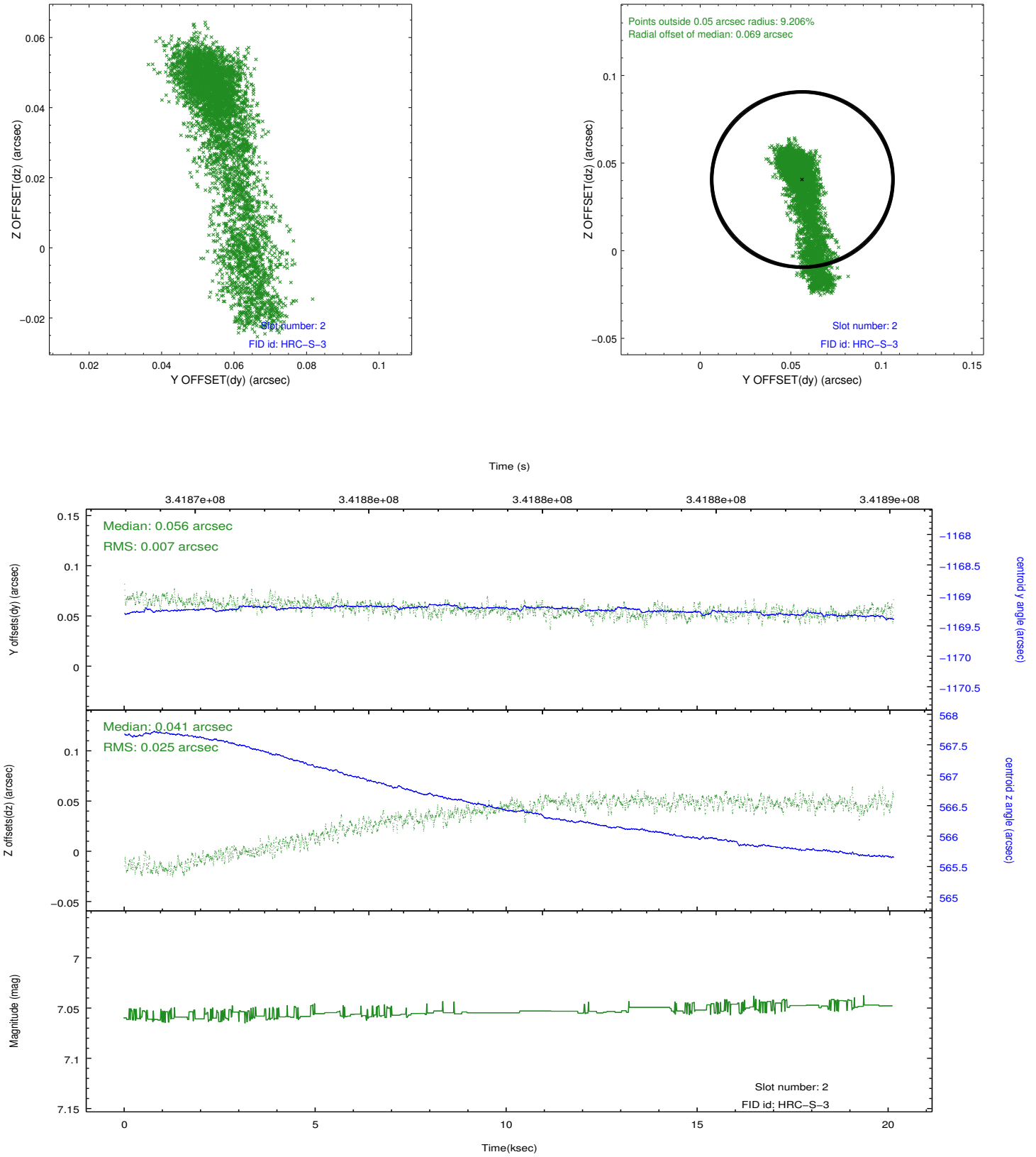
2.5.1 Slot 0



2.5.2 Slot 1



2.5.3 Slot 2



A Summary

A.1 Status

V&V Scientist	Beth Sundheim
V&V Date (YYYY-MM-DD)	2012.08.20
V&V Edition	1
V&V Disposition and Status	OK
V&V Charge Time	20.1317697

A.2 Comments