

V&V Reference Report

L2 ASCDS Version : 8.4.4

Observation 9108 - L2 Version 2
Chandra X-Ray Center

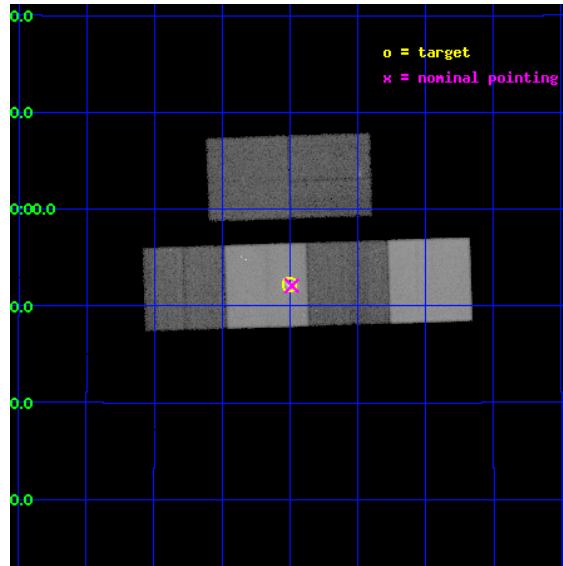
L2 Processing Date : May 18 2012

Contents

1	Front	2
2	OBI	3
2.1	OBI	3
2.1.1	Images	3
2.1.2	Bias	3
2.1.3	Parameters	4
2.1.4	Events	4
2.2	Compared Parameters	5
2.3	Aspect	6
2.4	Star Slots	9
2.4.1	Slot 3	9
2.4.2	Slot 4	10
2.4.3	Slot 5	11
2.4.4	Slot 6	12
2.4.5	Slot 7	13
2.5	FID Slots	14
2.5.1	Slot 0	14
2.5.2	Slot 1	15
2.5.3	Slot 2	16
A	Summary	17
A.1	Status	17
A.2	Comments	17

1 Front

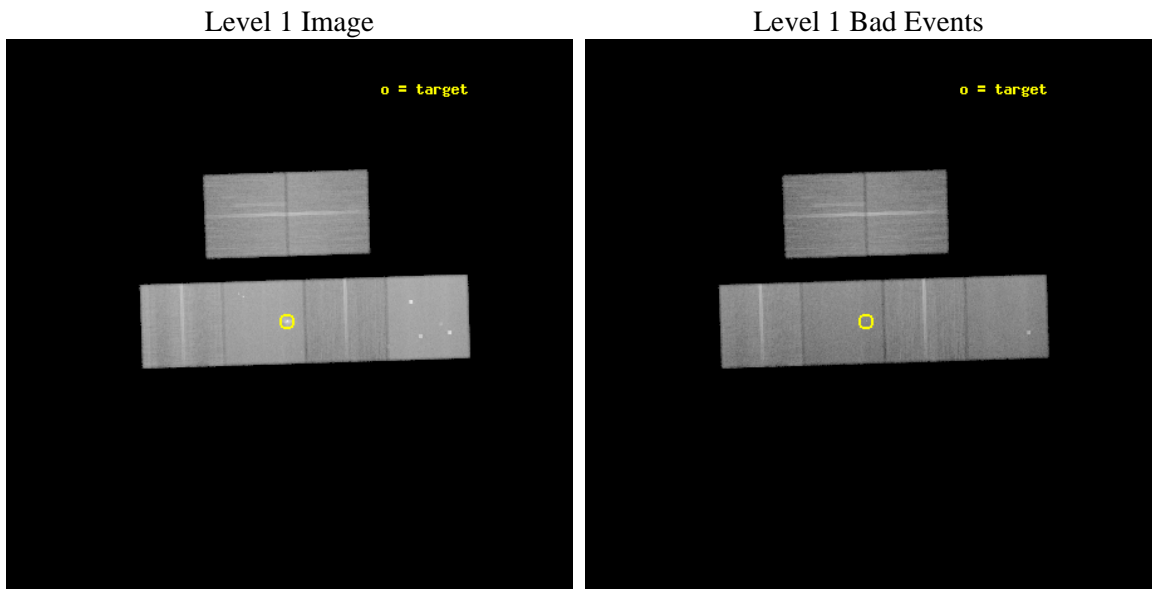
seq_num	500971	Sequence number
obs_id	9108	Observation id
title	A Deep Chandra Observation of G54.1+0.3	Proposal title
observer	Dr. Patrick Slane	Principal investigator
object	G54.1+0.3	Source name
dtcycle	0	
cycle	P	events from which exps? Prim/Second/Both
ra_targ	292.625833	Observer's specified target RA [deg]
dec_targ	18.870611	Observer's specified target Dec [deg]
ra_nom	292.62139587224	Nominal RA [deg]
dec_nom	18.868190421921	Nominal Dec [deg]
roll_nom	178.15805131406	Nominal Roll [deg]
revision	2	Processing version of data
ontime	35110.399869263	Sum of GTIs [s]
livetime	34665.810845174	Livetime [s]
ontime2	35110.399869263	Sum of GTIs [s]
ontime3	35107.158839047	Sum of GTIs [s]
ontime5	35110.399869263	Sum of GTIs [s]
ontime6	35110.399869263	Sum of GTIs [s]
ontime7	35110.399869263	Sum of GTIs [s]
ontime8	35110.399869263	Sum of GTIs [s]
l2events	590610	Number of level 2 events



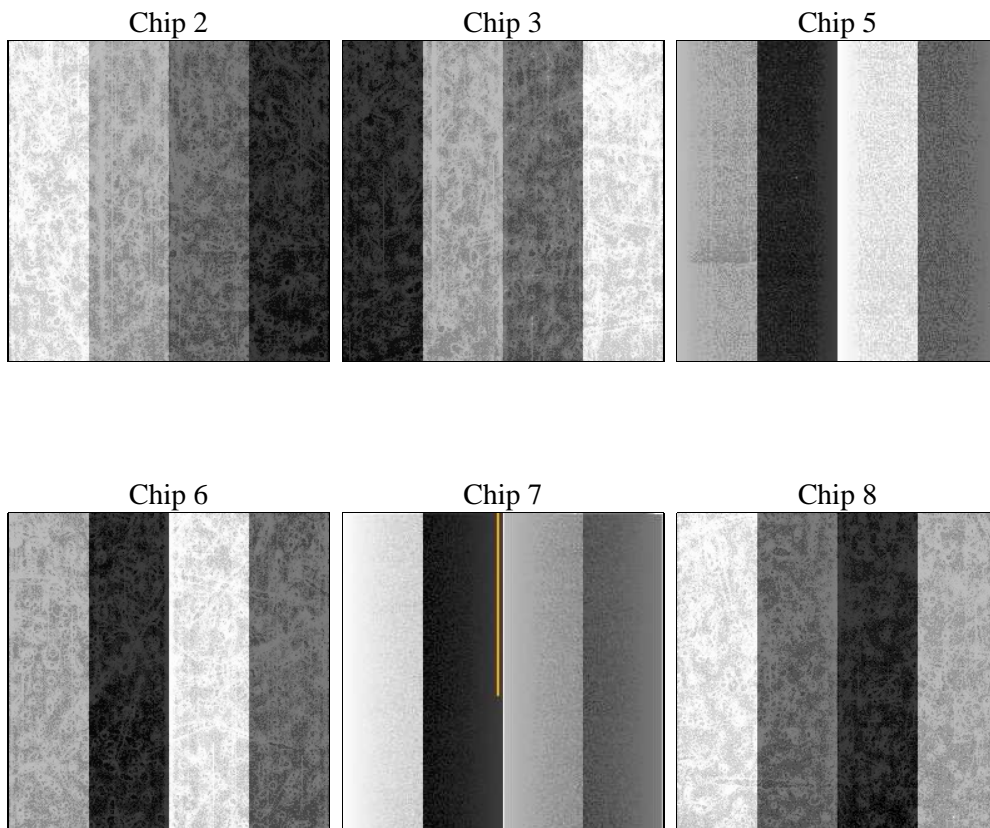
2 OBI

2.1 OBI

2.1.1 Images



2.1.2 Bias



2.1.3 Parameters

obi_num	0	Obi number	sched_exp_time	35000.000000	[s] Scheduled observation exposure time
ascdsver	8.4.4	Processing system revision	ontime	35110.399869263	Sum of GTIs [s]
caldsver	4.4.9	 	ontime2	35110.399869263	Sum of GTIs [s]
date	2012-05-18T04:06:06	Date and time of file creation	ontime3	35107.158839047	Sum of GTIs [s]
revision	2	Processing version of data	ontime5	35110.399869263	Sum of GTIs [s]
			ontime6	35110.399869263	Sum of GTIs [s]
			ontime7	35110.399869263	Sum of GTIs [s]
			ontime8	35110.399869263	Sum of GTIs [s]
			l1events	2503750	Number of level 1 events

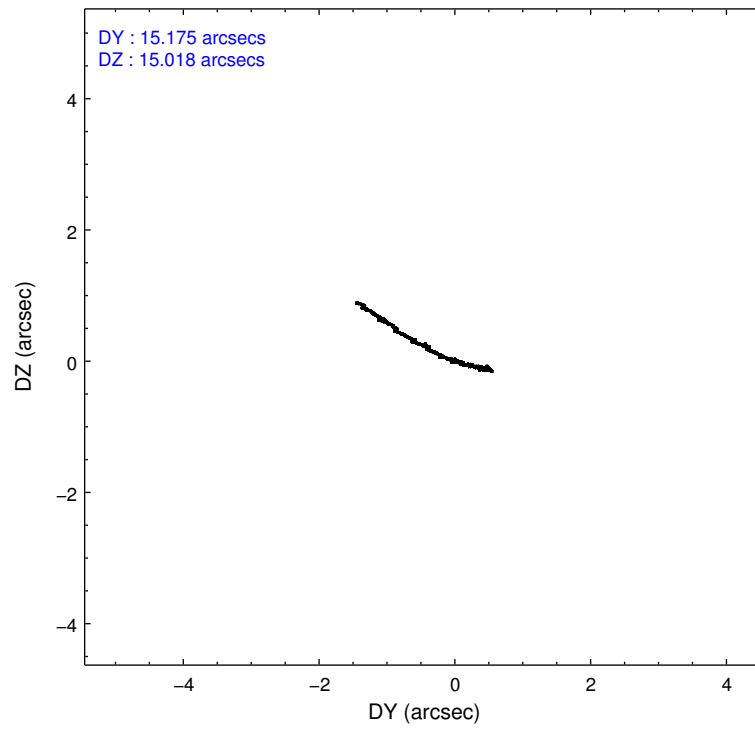
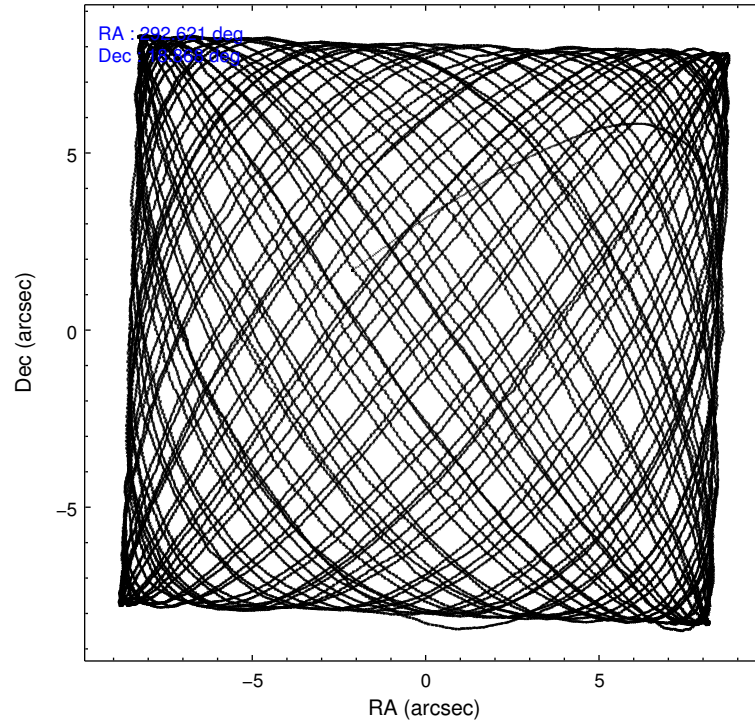
2.1.4 Events

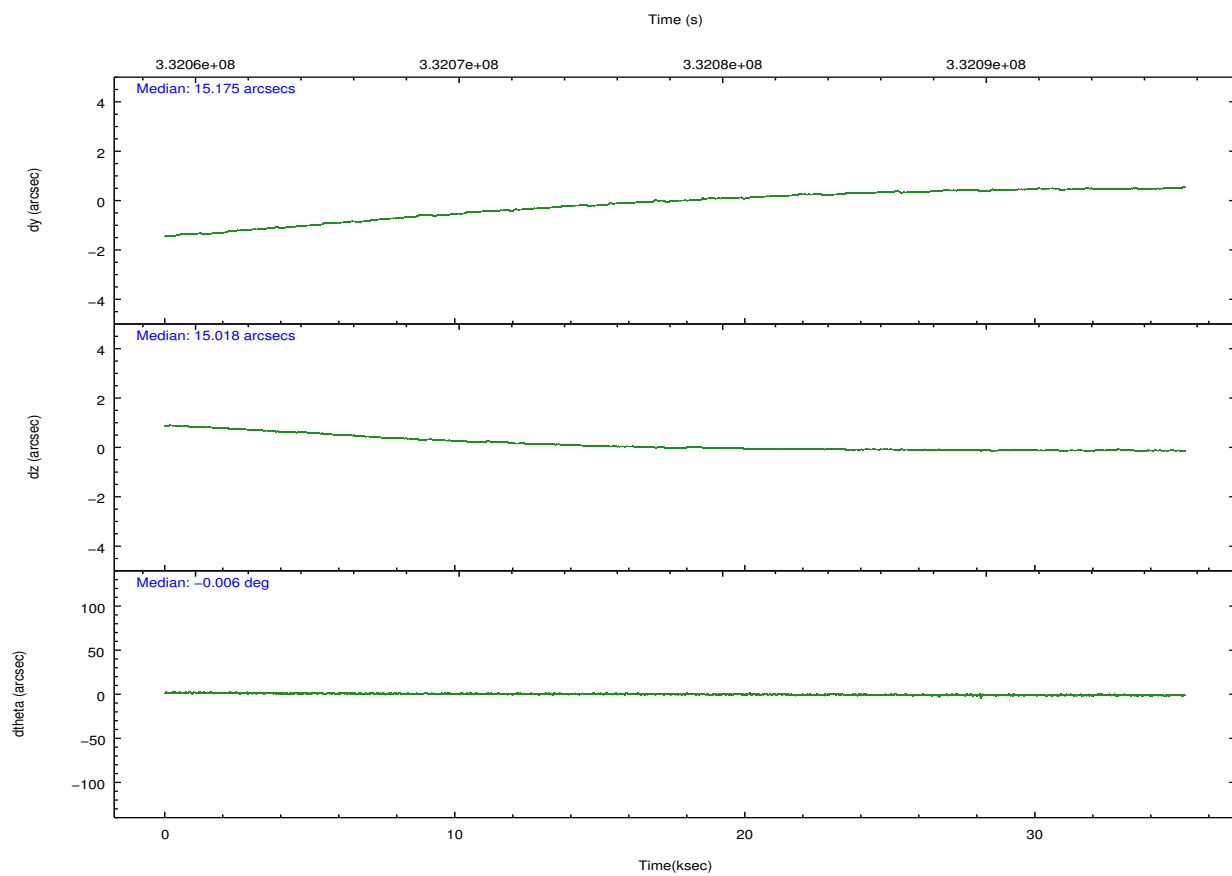
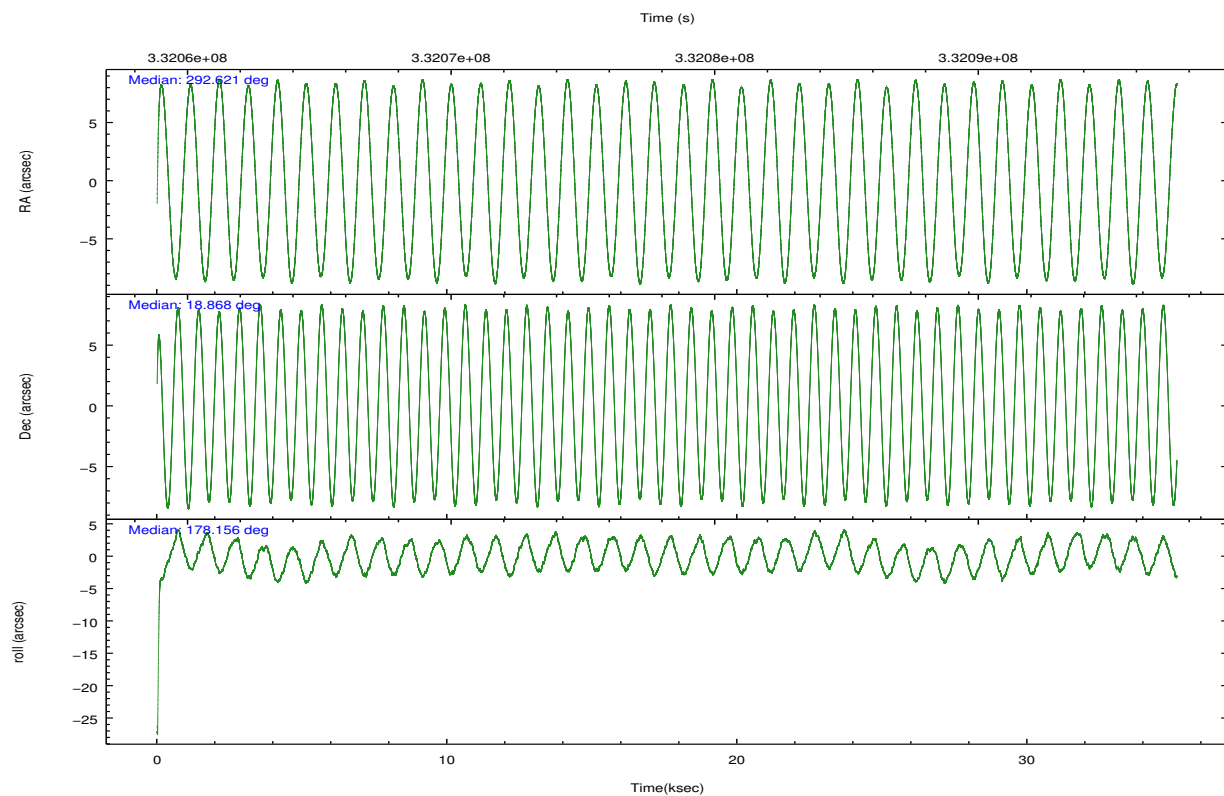
	ccd 2	ccd 3	ccd 5	ccd 6	ccd 7	ccd 8		ccd 2	ccd 3	ccd 5	ccd 6	ccd 7	ccd 8
level 1 events	350127	333558	539580	350011	496211	434263	grade 0 events	17302	18036	27162	17249	20641	32348
rejected events	309487	292546	289467	307025	280446	332095		4%	5%	5%	4%	4%	7%
rejected %	88%	87%	53%	87%	56%	76%	grade 1 events	249	256	773	199	555	341
								0%	0%	0%	0%	0%	0%
							grade 2 events	8964	8159	76440	9355	44999	23151
								2%	2%	14%	2%	9%	5%
							grade 3 events	3672	3939	8576	4004	18875	10487
								1%	1%	1%	1%	3%	2%
							grade 4 events	3788	3762	8194	3842	18437	9980
								1%	1%	1%	1%	3%	2%
							grade 5 events	13974	16080	37867	16583	44420	21890
								3%	4%	7%	4%	8%	5%
							grade 6 events	6922	7129	129810	8547	112854	26227
								1%	2%	24%	2%	22%	6%
							grade 7 events	295256	276197	250758	290232	235430	309839
								84%	82%	46%	82%	47%	71%

2.2 Compared Parameters

Parameter	Planned	Actual	Parameter	Planned	Actual
Instrument	ACIS	ACIS	Obspar format version number	7	7
Detector	ACIS-235678	ACIS-235678	Obspar file type	PREDICTED	ACTUAL
Grating	NONE	NONE	Obspar update status	NONE	UPDATED
Data mode	FAINT	FAINT	CCD I0 on	N	N
Observation mode	POINTING	POINTING	CCD I1 on	N	N
[deg] Pointing RA	292.646678	292.6213958722354	CCD I2 on	O2	Y
[deg] Pointing Dec	18.881433	18.86819042192082	CCD I3 on	O3	Y
[deg] Pointing Roll	177.993253	178.1580513140579	CCD S0 on	N	N
[mm] SIM focus pos	-0.684267	-0.6828225247311905	CCD S1 on	O1	Y
[mm] SIM defocus	0	0.001444936568705701	CCD S2 on	O5	Y
[mm] SIM translation stage pos	-190.132523	-190.1425803651734	CCD S3 on	Y	Y
[mm] SIM translation stage offset	0	0.01005778216563158	CCD S4 on	O4	Y
[s] Observation start time (MET)	332060783.184000	332059742.04486	CCD S5 on	N	N
Observation start date	2008-07-10T07:05:18	2008-07-10T06:49:02	Number of optional ACIS chips dropped	0	0
[s] Observation end time (MET)	332095783.184000	332096686.12167	On-chip summing requested	N	N
Observation end date	2008-07-10T16:48:38	2008-07-10T17:04:46	Subarray requested	NONE	NONE
Read mode	TIMED	TIMED	Alternating exposures requested	N	N
			[s] Primary exposure time	0.000000	3.2

2.3 Aspect



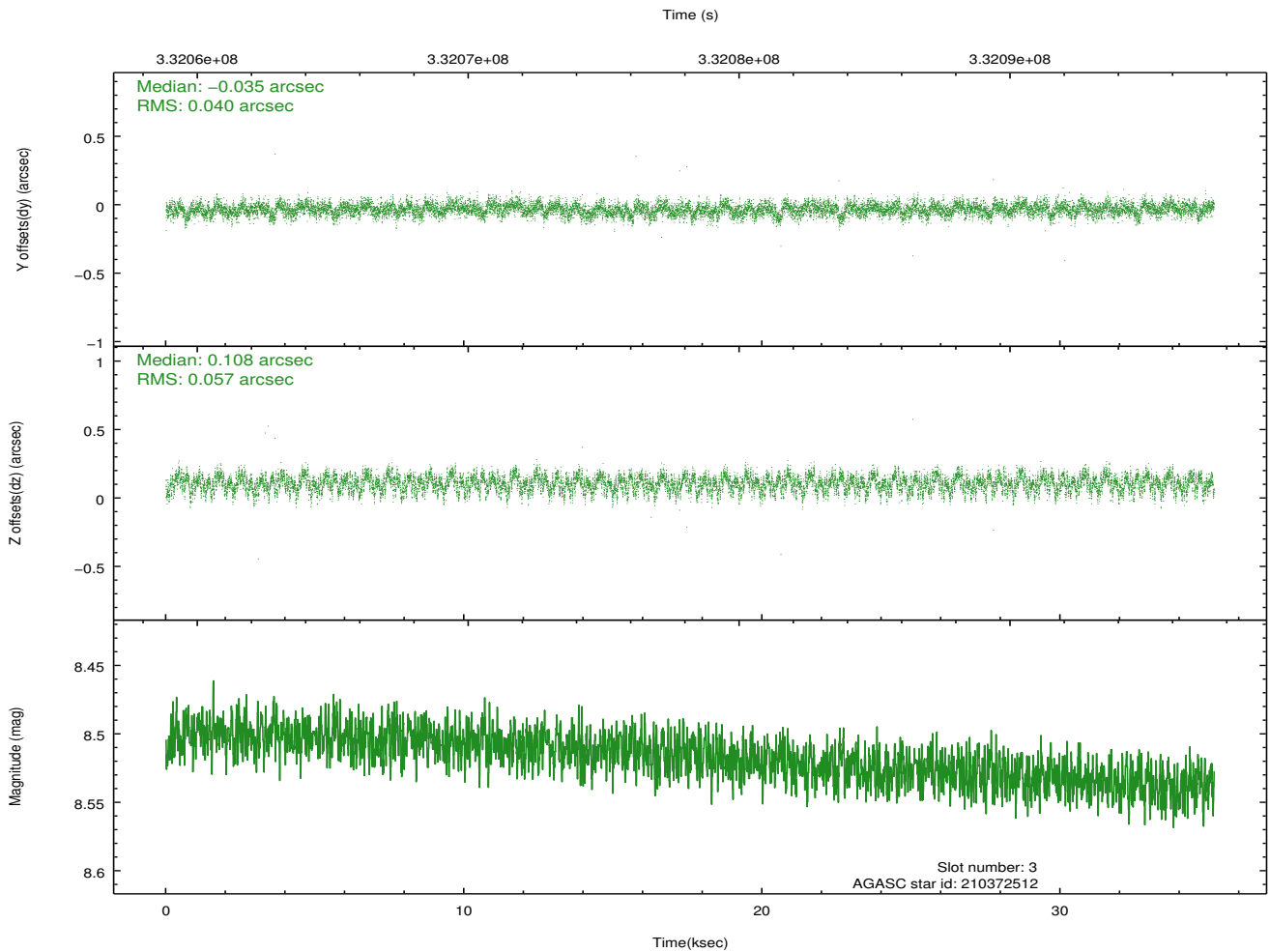
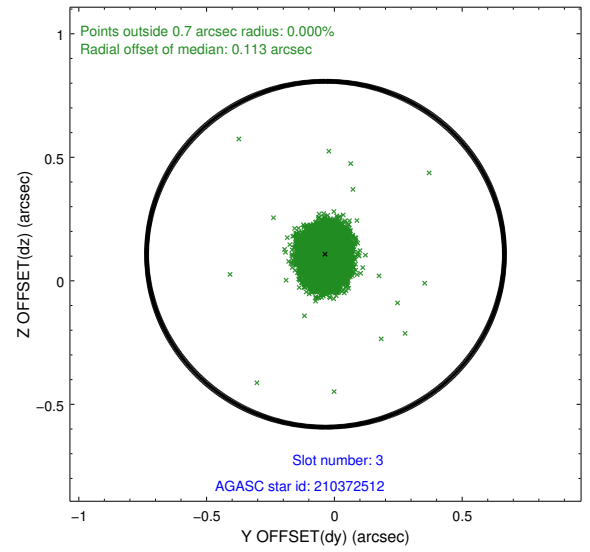
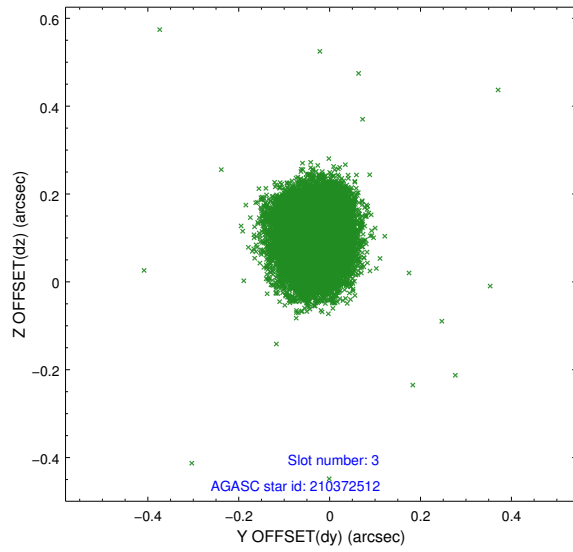


Slot Statistics

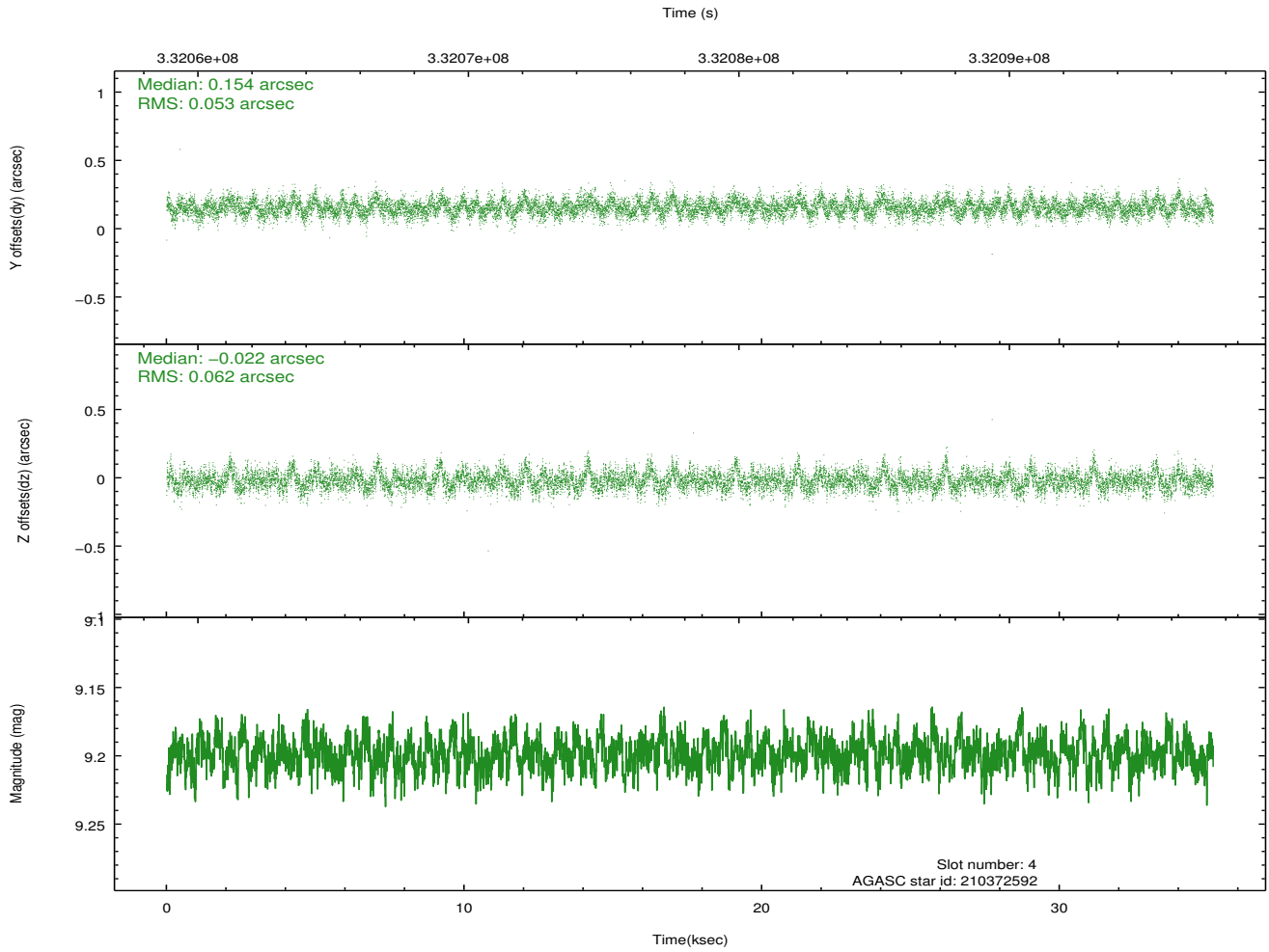
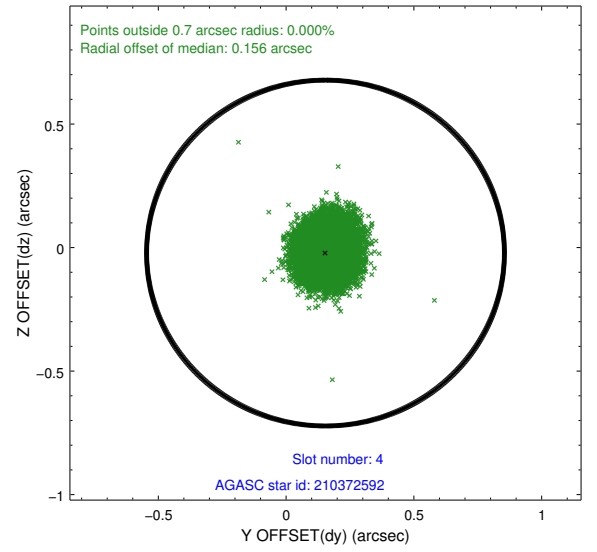
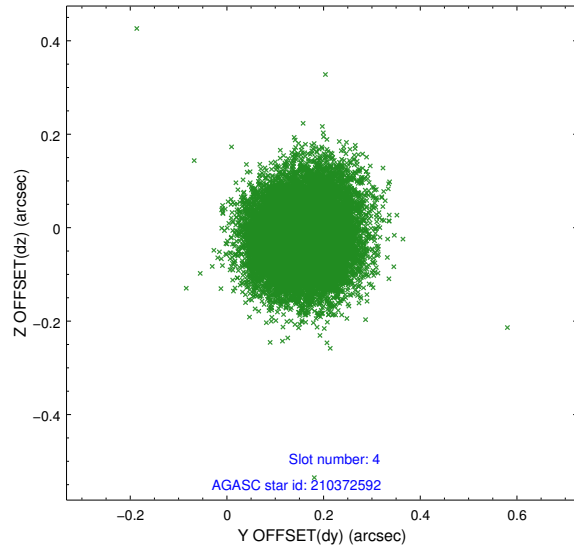
slot	status	id	mag	n_pts	med_dy	med_dz	dr1	dr2	ra	dec	mean_y	mean_z
0	FID	ACIS-S-1	6.98	8576	0.035	-0.025	0.020	0.052	0.000000	0.000000	928.12	-1732.15
1	FID	ACIS-S-5	7.02	8575	-0.100	0.020	0.026	0.039	0.000000	0.000000	-1821.02	165.39
2	FID	ACIS-S-6	7.11	8576	0.045	0.019	0.022	0.034	0.000000	0.000000	393.61	809.42
3	GUIDE	210372512	8.52	17145	-0.035	0.108	0.074	0.118	292.201979	18.486300	1467.66	1473.14
4	GUIDE	210372592	9.20	17135	0.154	-0.022	0.086	0.142	292.900736	18.702395	-888.04	613.32
5	GUIDE	210375784	7.15	17153	-0.104	-0.284	0.059	0.096	292.707024	18.250669	-285.86	2261.93
6	GUIDE	210910720	8.97	17140	0.135	0.249	0.070	0.114	293.320637	18.950574	-2284.27	-333.09
7	GUIDE	210370904	7.79	17150	-0.151	-0.055	0.060	0.096	292.563039	18.704932	262.78	645.17

2.4 Star Slots

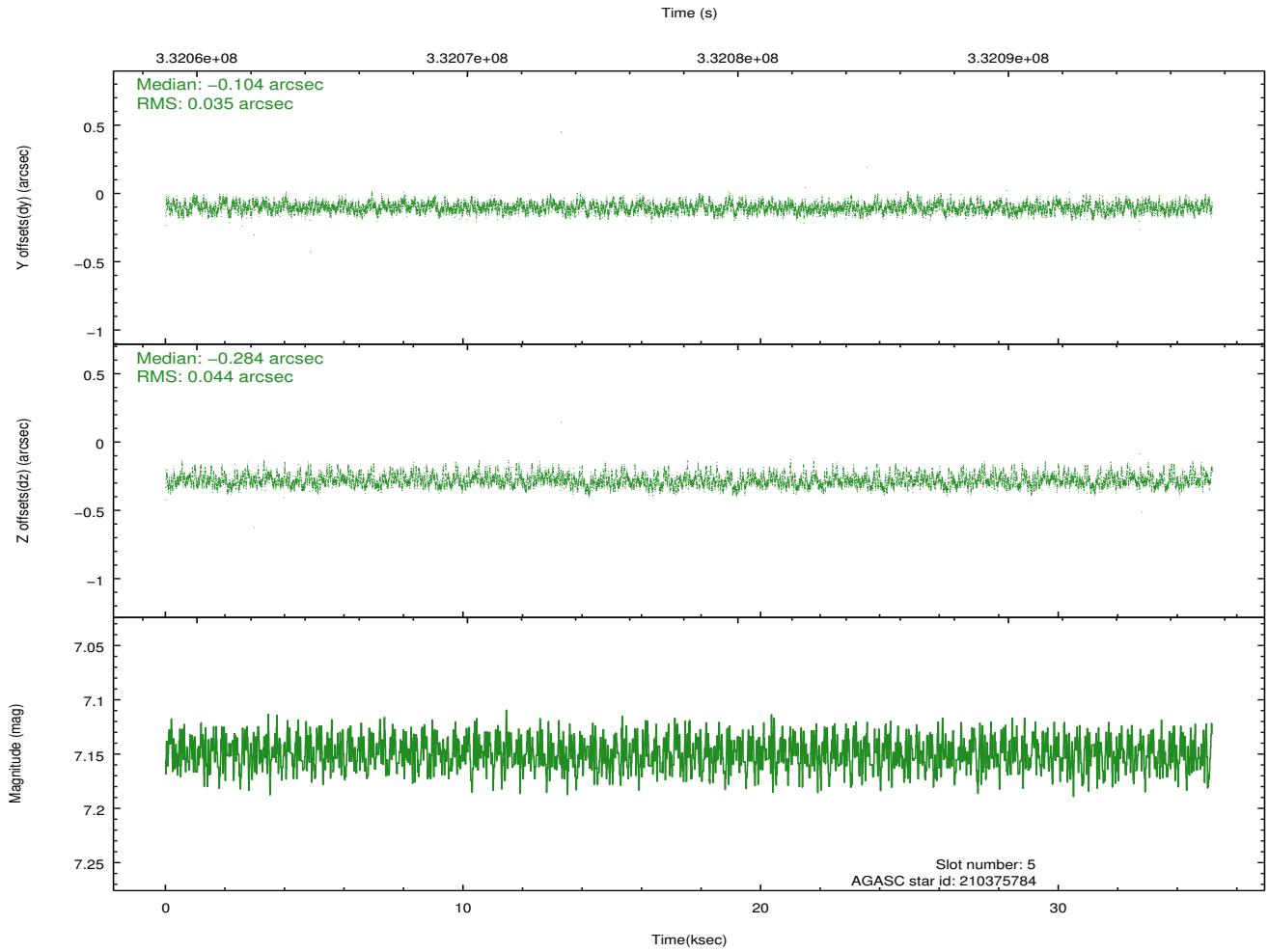
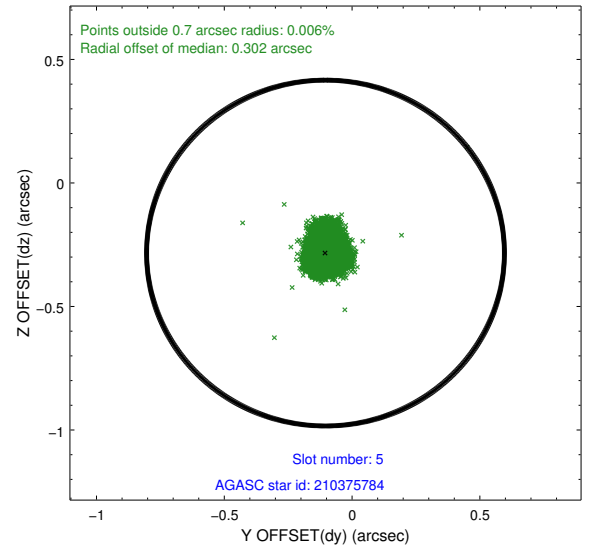
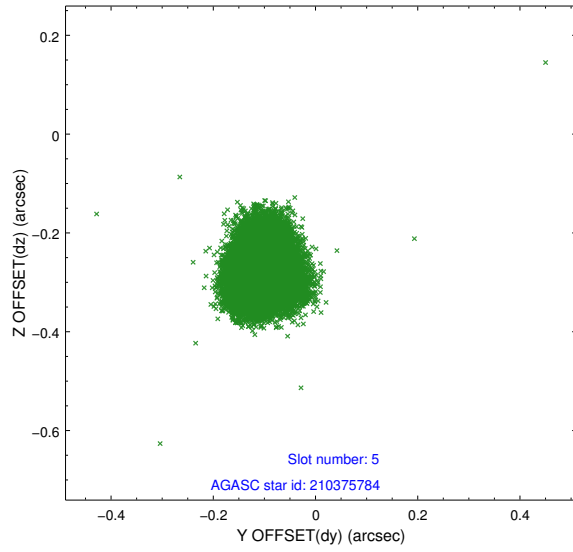
2.4.1 Slot 3



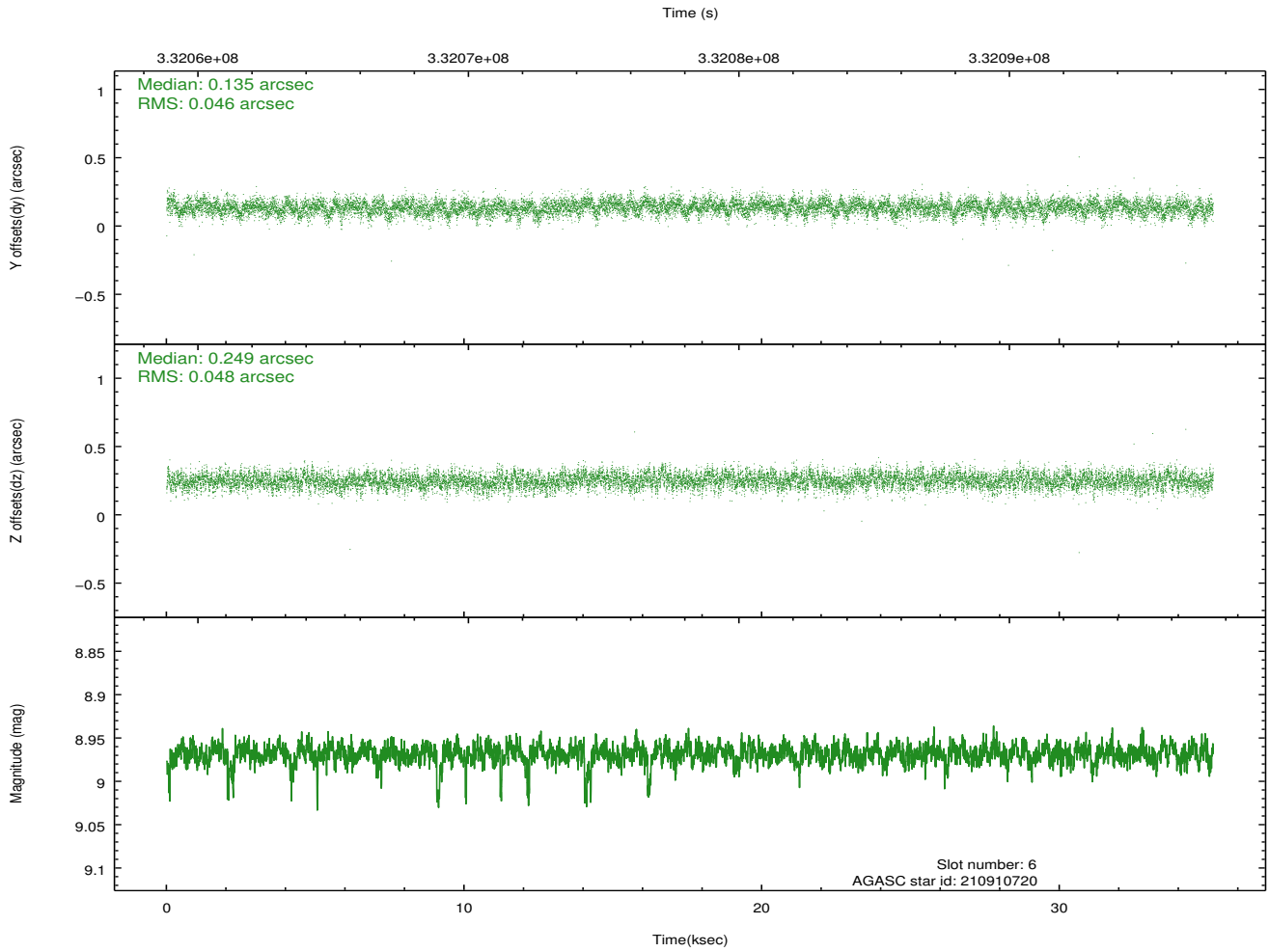
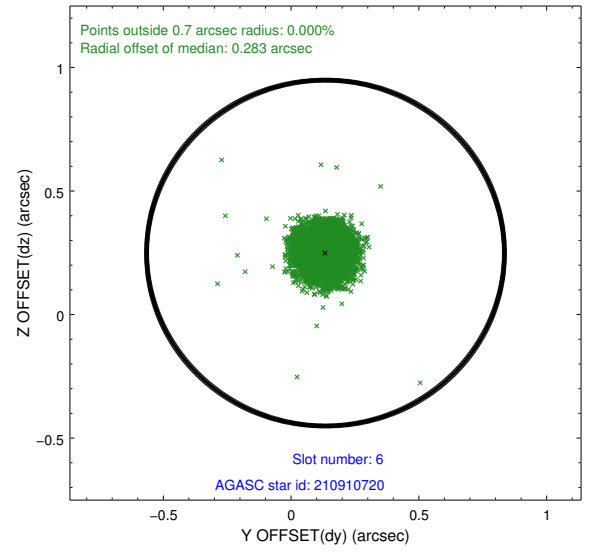
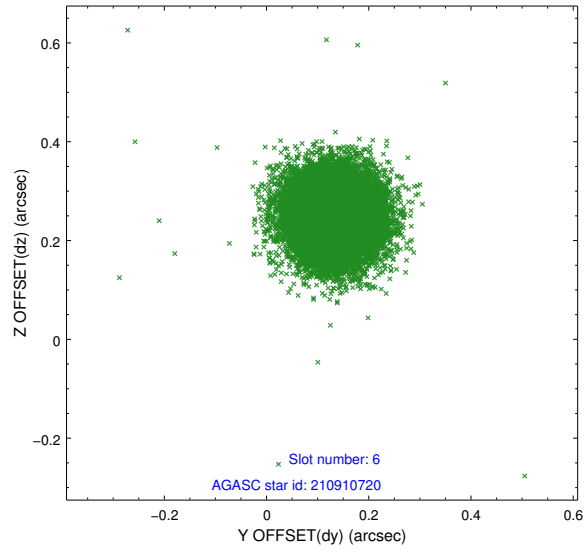
2.4.2 Slot 4



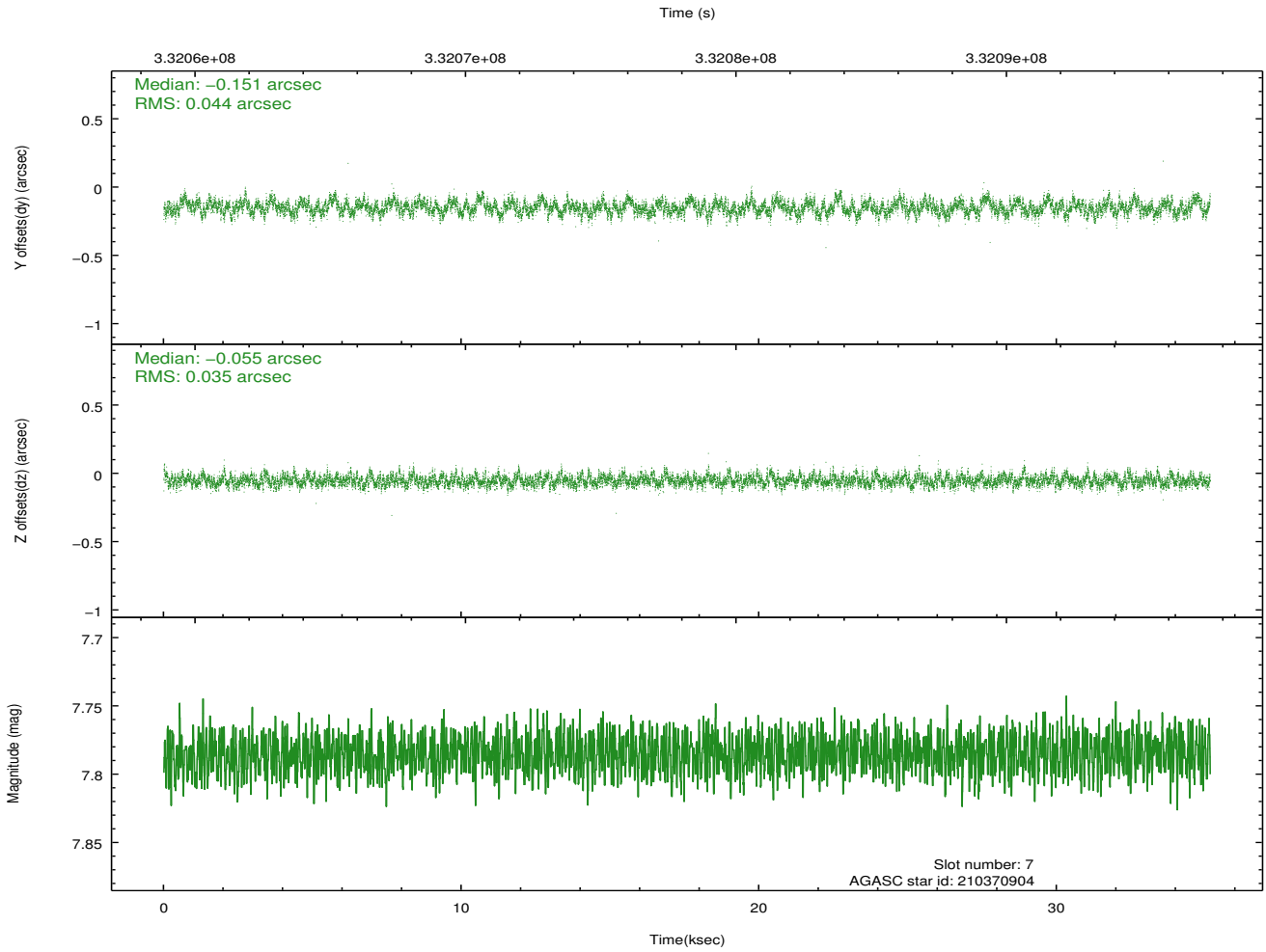
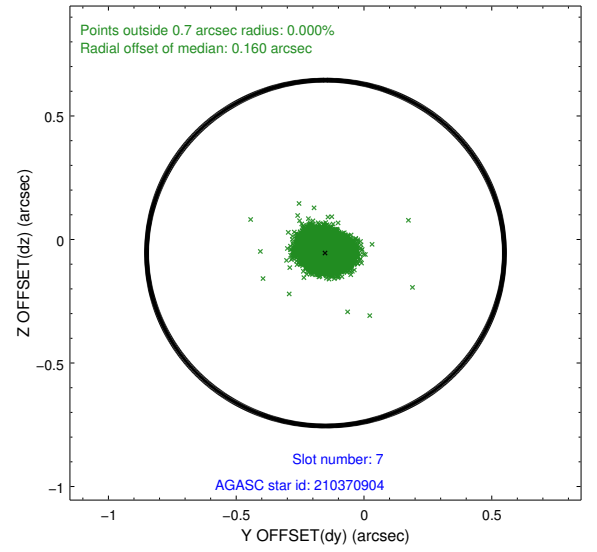
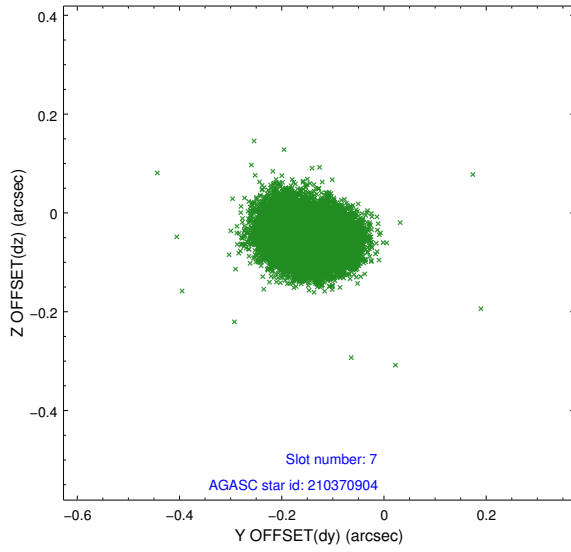
2.4.3 Slot 5



2.4.4 Slot 6

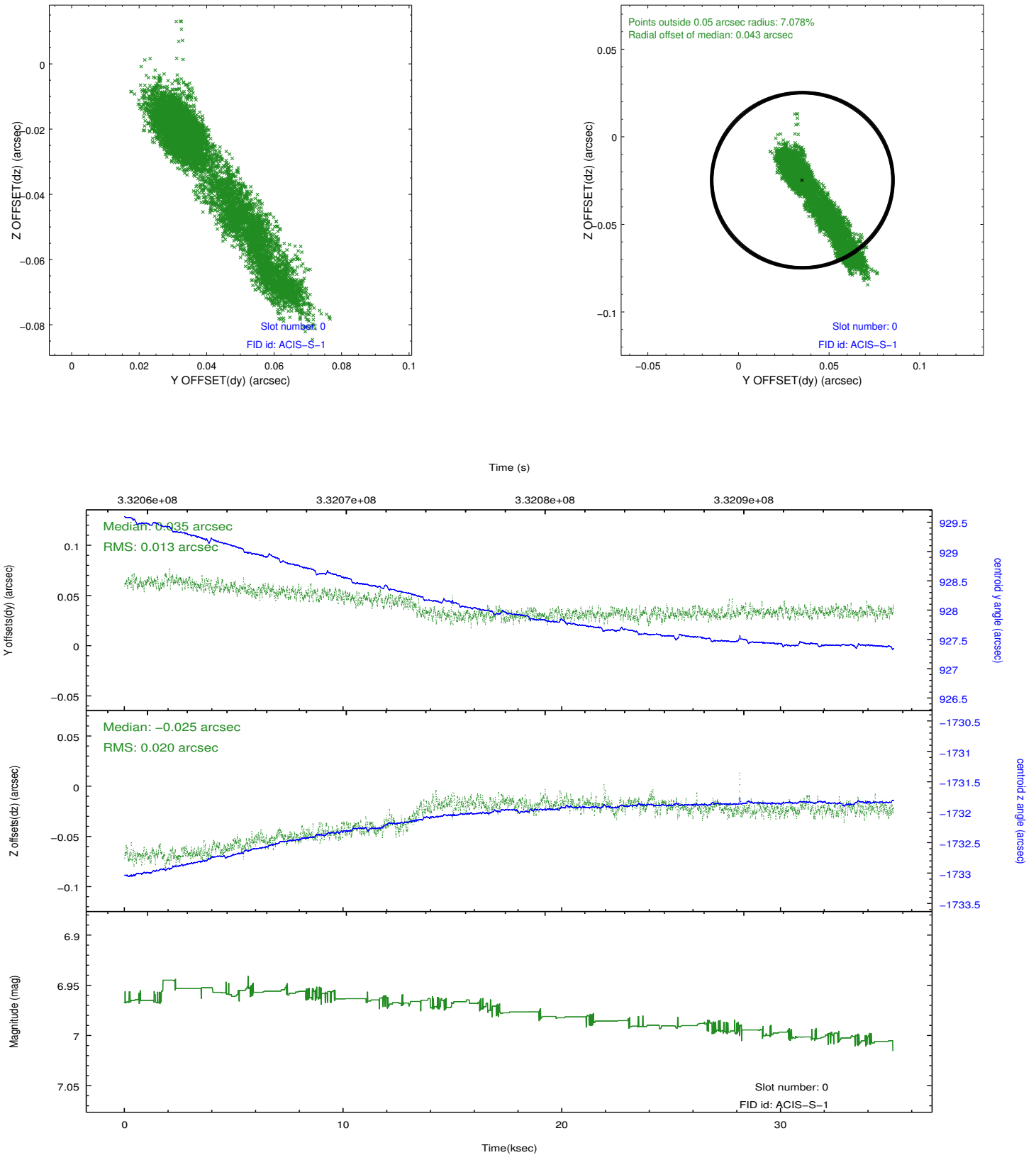


2.4.5 Slot 7

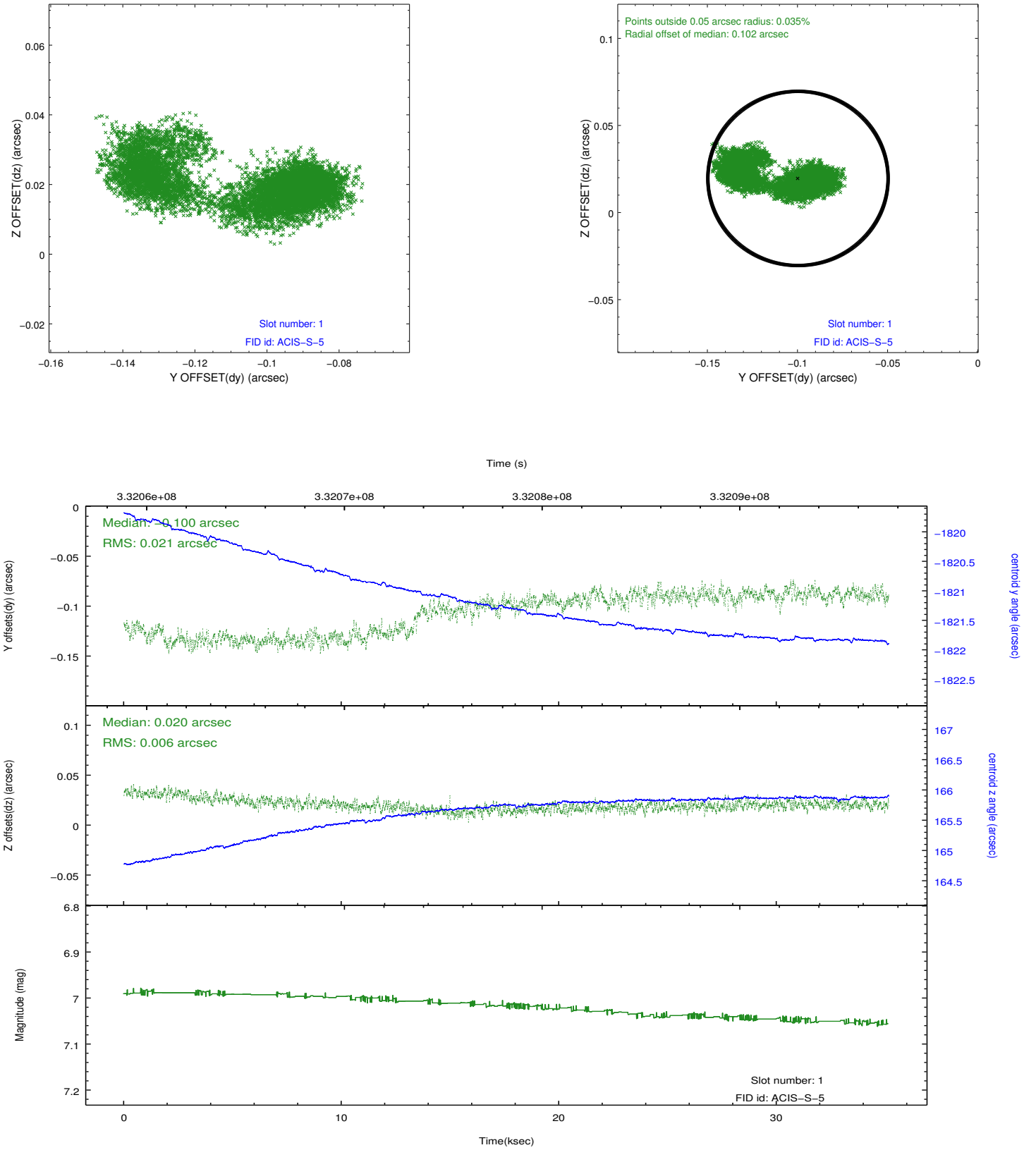


2.5 FID Slots

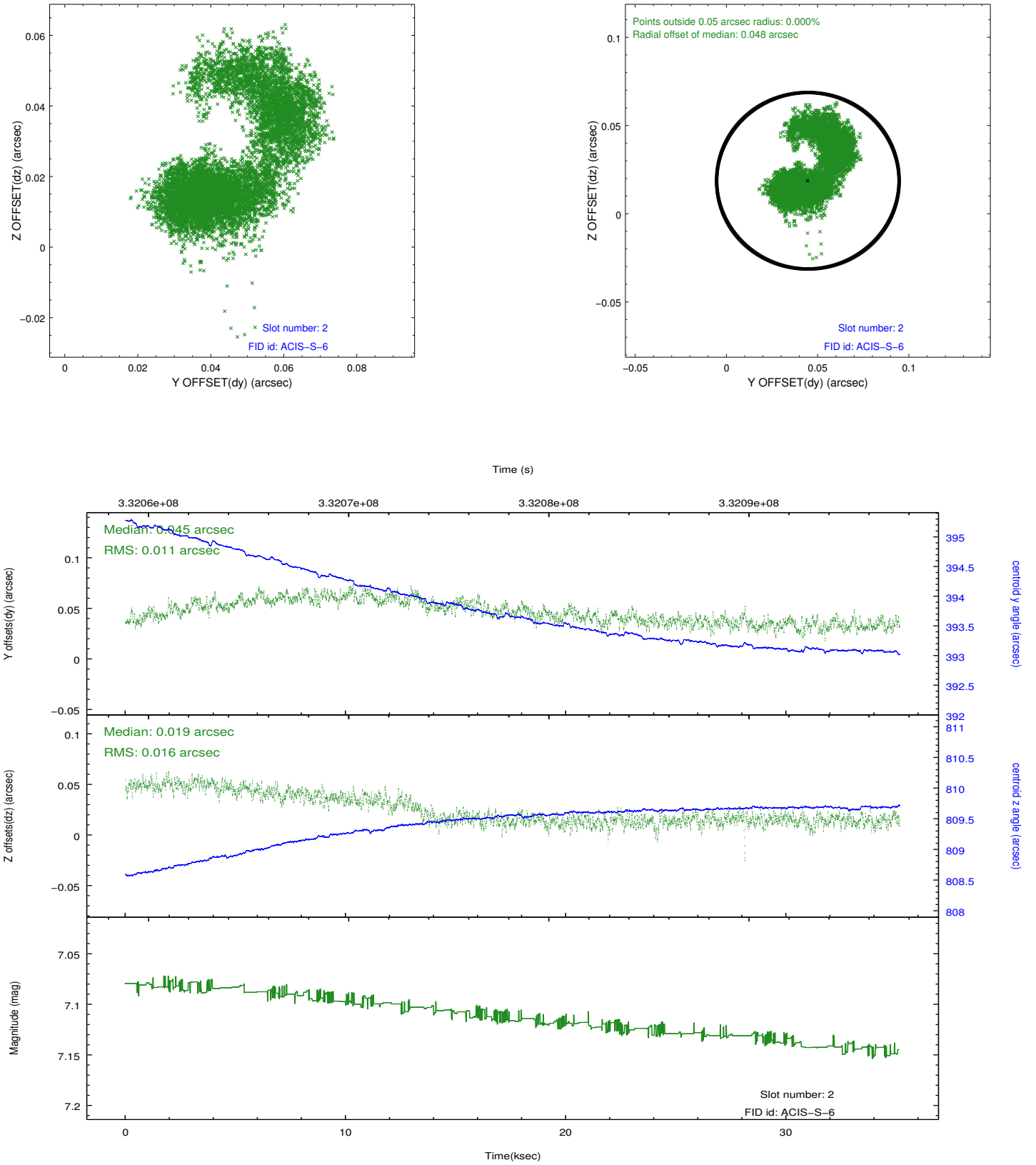
2.5.1 Slot 0



2.5.2 Slot 1



2.5.3 Slot 2



A Summary

A.1 Status

V&V Scientist	Beth Sundheim
V&V Date (YYYY-MM-DD)	2012.05.25
V&V Edition	1
V&V Disposition and Status	OK
V&V Charge Time	35.1103998

A.2 Comments