

# V&V Reference Report

## L2 ASCDS Version : 8.4.4

Observation 9103 - L2 Version 2  
Chandra X-Ray Center

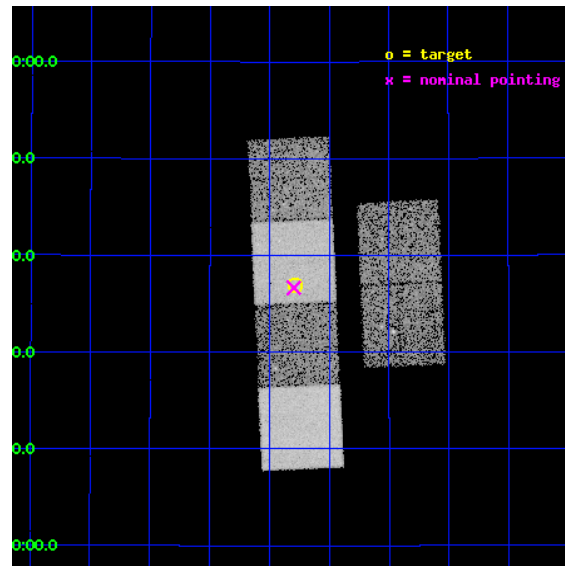
L2 Processing Date : May 5 2012

## Contents

<b>1</b>	<b>Front</b>	<b>2</b>
<b>2</b>	<b>OBI</b>	<b>3</b>
2.1	OBI . . . . .	3
2.1.1	Images . . . . .	3
2.1.2	Bias . . . . .	3
2.1.3	Parameters . . . . .	4
2.1.4	Events . . . . .	4
2.2	Compared Parameters . . . . .	5
2.3	Aspect . . . . .	6
2.4	Star Slots . . . . .	9
2.4.1	Slot 3 . . . . .	9
2.4.2	Slot 4 . . . . .	10
2.4.3	Slot 5 . . . . .	11
2.4.4	Slot 6 . . . . .	12
2.4.5	Slot 7 . . . . .	13
2.5	FID Slots . . . . .	14
2.5.1	Slot 0 . . . . .	14
2.5.2	Slot 1 . . . . .	15
2.5.3	Slot 2 . . . . .	16
<b>A</b>	<b>Summary</b>	<b>17</b>
A.1	Status . . . . .	17
A.2	Comments . . . . .	17

# 1 Front

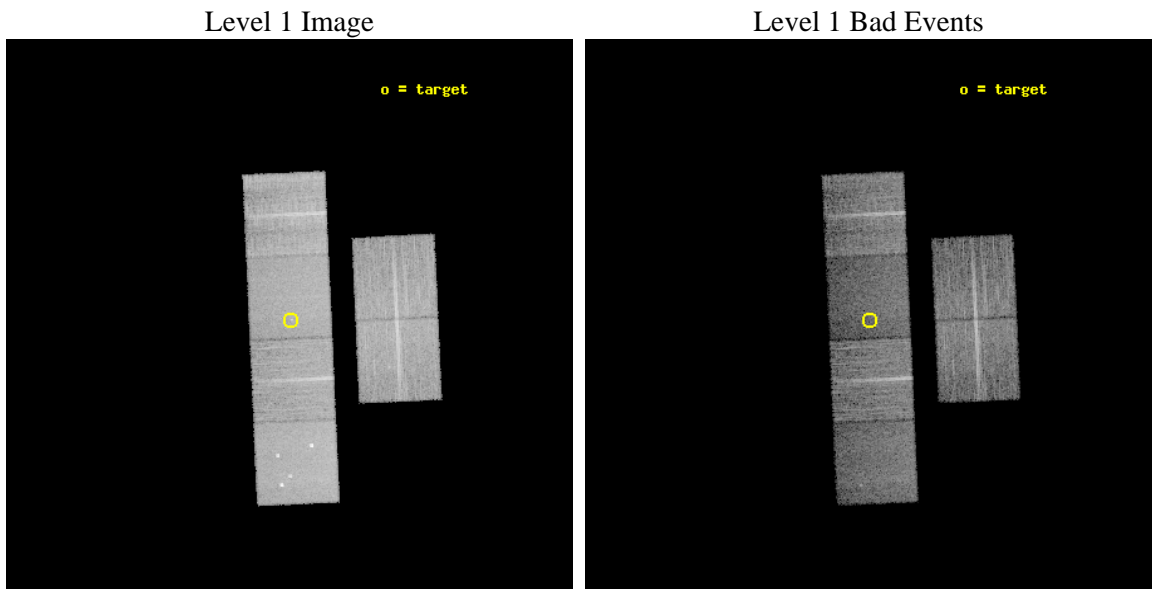
seq_num	500966	Sequence number
obs_id	9103	Observation id
title	Chandra Observations of New X-ray Supernovae	Proposal title
observer	Prof. David Pooley	Principal investigator
object	SN 2007pk	Source name
dtcycle	0	&#160
cycle	P	events from which exps? Prim/Second/Both
ra_targ	22.94625	Observer's specified target RA [deg]
dec_targ	33.615028	Observer's specified target Dec [deg]
ra_nom	22.949050273481	Nominal RA [deg]
dec_nom	33.610765966161	Nominal Dec [deg]
roll_nom	267.4094269738	Nominal Roll [deg]
revision	2	Processing version of data
ontime	10182.399962127	Sum of GTIs [s]
livetime	10053.464282702	Livetime [s]
ontime2	10182.399962127	Sum of GTIs [s]
ontime3	10182.399962127	Sum of GTIs [s]
ontime5	10182.399962127	Sum of GTIs [s]
ontime6	10182.399962127	Sum of GTIs [s]
ontime7	10182.399962127	Sum of GTIs [s]
ontime8	10182.399962127	Sum of GTIs [s]
l2events	124375	Number of level 2 events



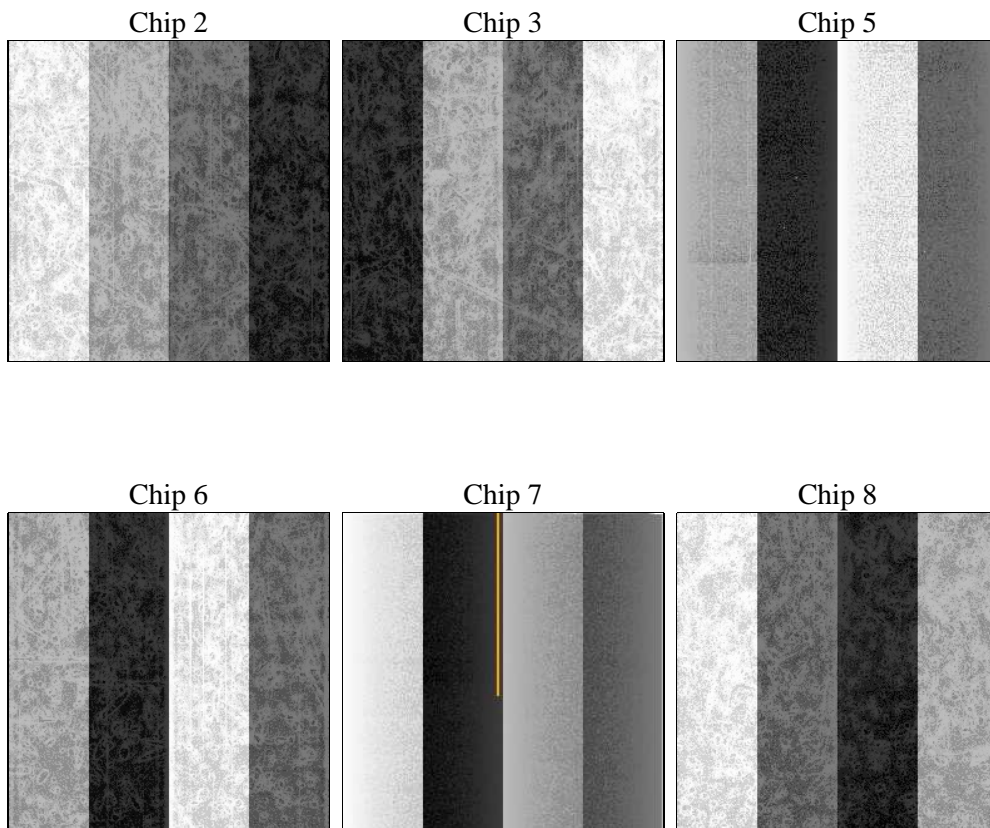
## 2 OBI

### 2.1 OBI

#### 2.1.1 Images



#### 2.1.2 Bias



### 2.1.3 Parameters

obi_num	0	Obi number	sched_exp_time	10000.000000	[s] Scheduled observation exposure time
ascdsver	8.4.4	Processing system revision	ontime	10182.399962127	Sum of GTIs [s]
caldsver	4.4.9	&#160	ontime2	10182.399962127	Sum of GTIs [s]
date	2012-05-05T21:13:01	Date and time of file creation	ontime3	10182.399962127	Sum of GTIs [s]
revision	2	Processing version of data	ontime5	10182.399962127	Sum of GTIs [s]
			ontime6	10182.399962127	Sum of GTIs [s]
			ontime7	10182.399962127	Sum of GTIs [s]
			ontime8	10182.399962127	Sum of GTIs [s]
			l1events	614015	Number of level 1 events

### 2.1.4 Events

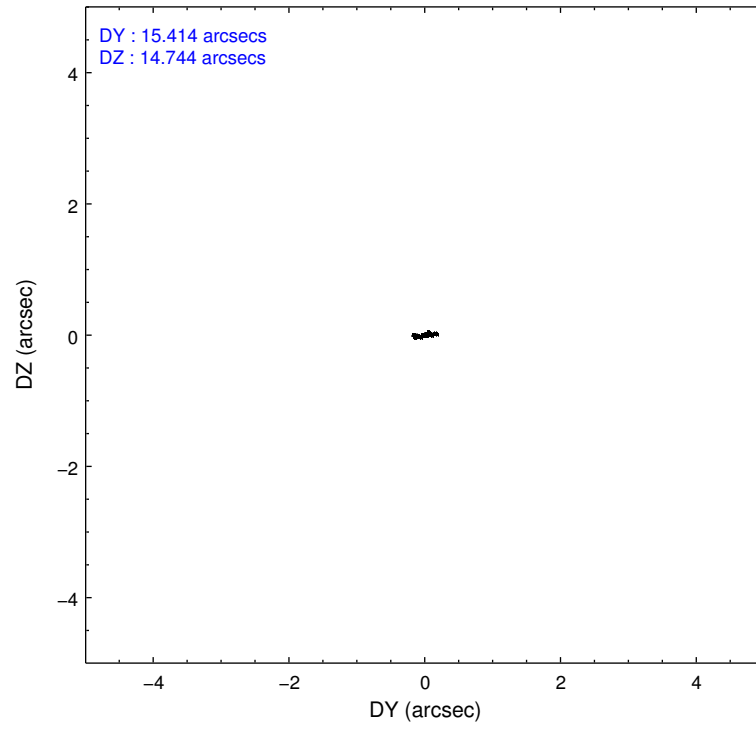
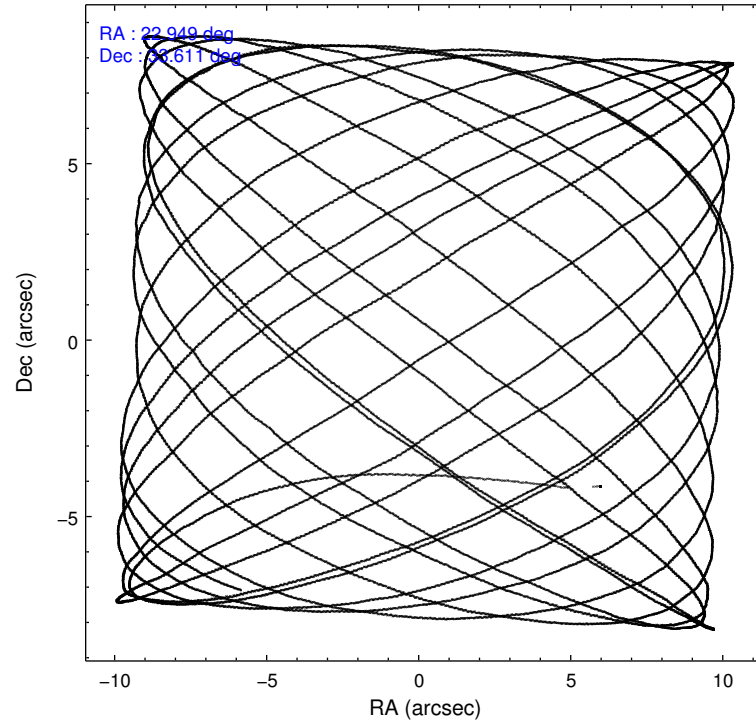
	ccd 2	ccd 3	ccd 5	ccd 6	ccd 7	ccd 8		ccd 2	ccd 3	ccd 5	ccd 6	ccd 7	ccd 8
level 1 events	95801	89138	124349	93804	99592	111331	grade 0 events	3101	2938	8023	3201	4286	7922
rejected events	87630	81507	65035	85290	56848	86334		3%	3%	6%	3%	4%	7%
rejected %	91%	91%	52%	90%	57%	77%	grade 1 events	47	46	253	41	134	89
								0%	0%	0%	0%	0%	0%
							grade 2 events	2099	1701	18425	1936	9223	6245
								2%	1%	14%	2%	9%	5%
							grade 3 events	865	930	2414	955	4073	2838
								0%	1%	1%	1%	4%	2%
							grade 4 events	1005	935	2297	991	4105	2598
								1%	1%	1%	1%	4%	2%
							grade 5 events	3066	3538	9266	3532	10390	5080
								3%	3%	7%	3%	10%	4%
							grade 6 events	1581	1608	31787	1933	23677	7159
								1%	1%	25%	2%	23%	6%
							grade 7 events	84037	77442	51884	81215	43704	79400
								87%	86%	41%	86%	43%	71%

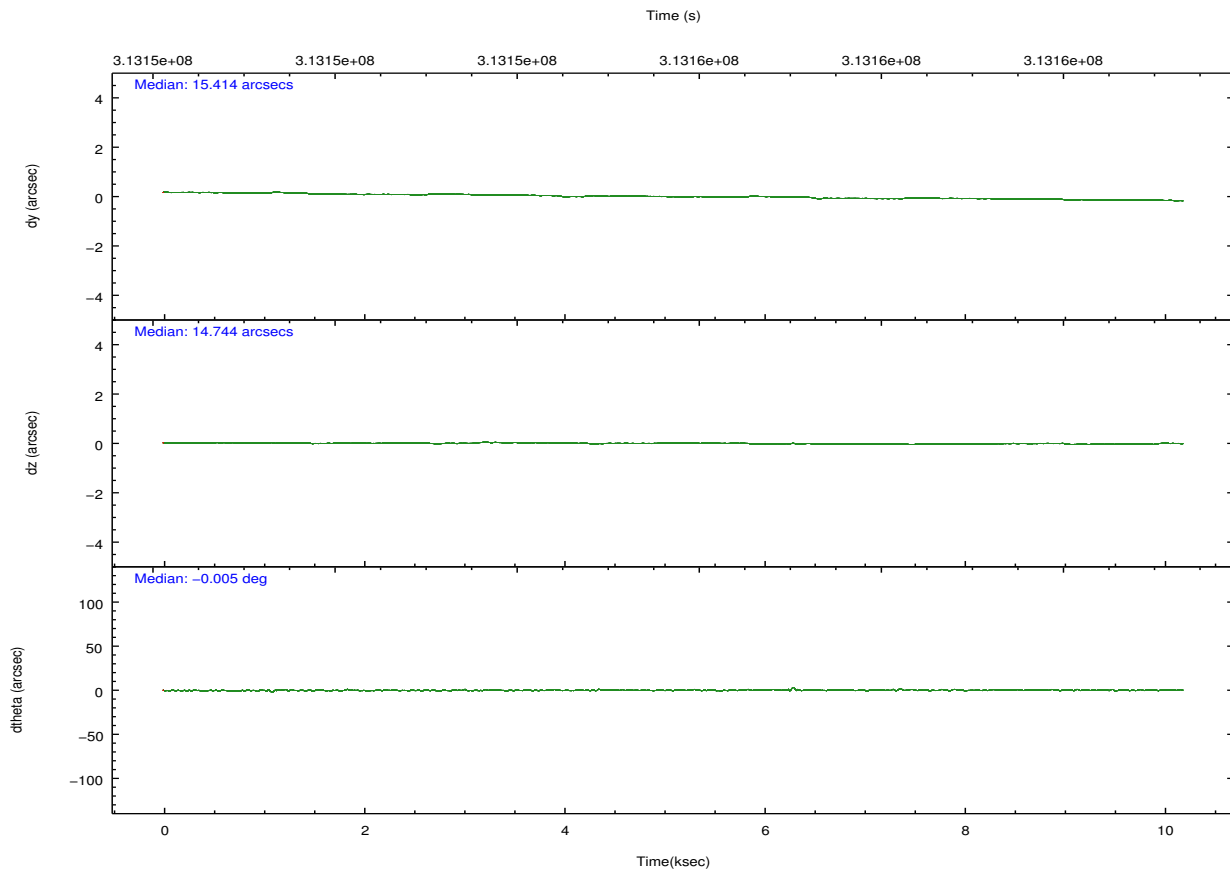
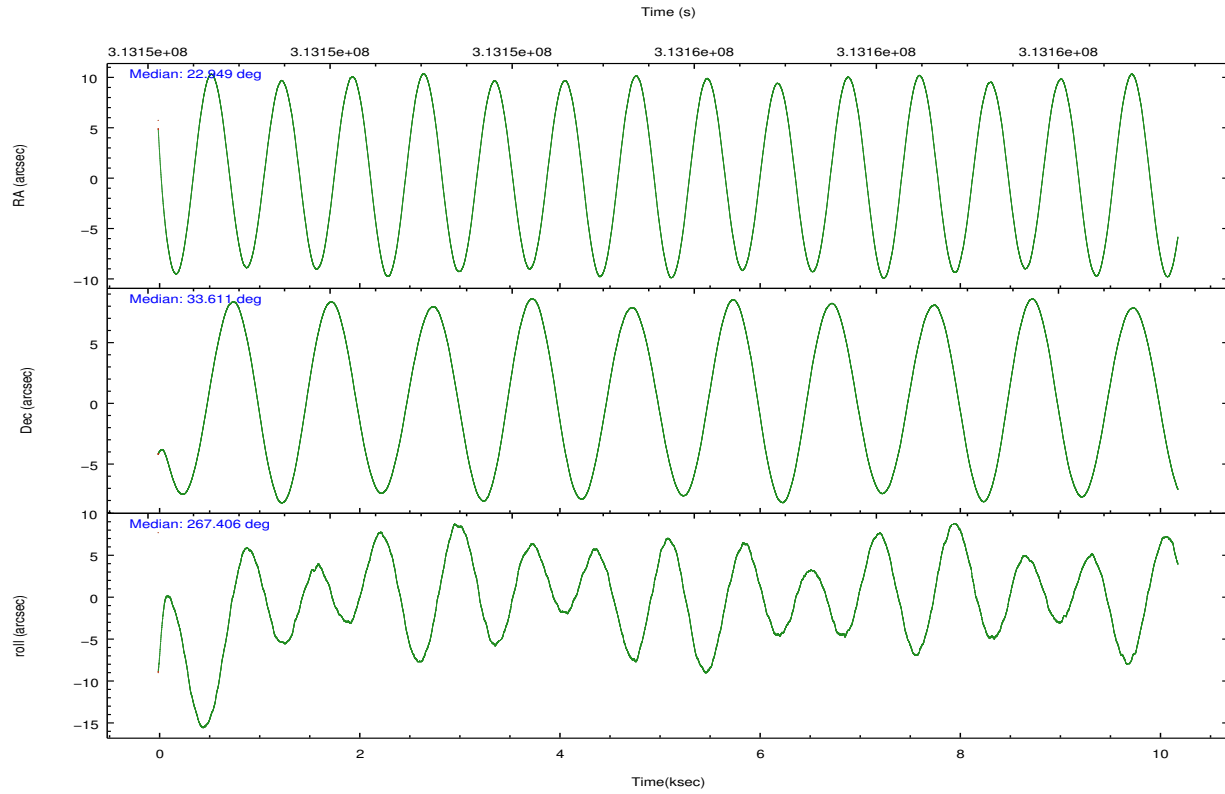


## 2.2 Compared Parameters

Parameter	Planned	Actual	Parameter	Planned	Actual
Instrument	ACIS	ACIS	Obspar format version number	7	7
Detector	ACIS-235678	ACIS-235678	Obspar file type	PREDICTED	ACTUAL
Grating	NONE	NONE	Obspar update status	NONE	UPDATED
Data mode	VFAINT	VFAINT	CCD I0 on	N	N
Observation mode	POINTING	POINTING	CCD I1 on	N	N
[deg] Pointing RA	22.933567	22.94905027348059	CCD I2 on	O1	Y
[deg] Pointing Dec	33.634890	33.61076596616103	CCD I3 on	O2	Y
[deg] Pointing Roll	267.261372	267.4094269738021	CCD S0 on	N	N
[mm] SIM focus pos	-0.684267	-0.6828225247311905	CCD S1 on	Y	Y
[mm] SIM defocus	0	0.001444936568705701	CCD S2 on	Y	Y
[mm] SIM translation stage pos	-190.132523	-190.1400660498719	CCD S3 on	Y	Y
[mm] SIM translation stage offset	0	0.00754346686406393	CCD S4 on	Y	Y
[s] Observation start time (MET)	313150798.184000	313149422.33761	CCD S5 on	N	N
Observation start date	2007-12-04T10:18:53	2007-12-04T09:57:02	Number of optional ACIS chips dropped	0	0
[s] Observation end time (MET)	313160798.184000	313161427.65069	On-chip summing requested	N	N
Observation end date	2007-12-04T13:05:33	2007-12-04T13:17:07	Subarray requested	NONE	NONE
Read mode	TIMED	TIMED	Alternating exposures requested	N	N
			[s] Primary exposure time	0.000000	3.2

## 2.3 Aspect



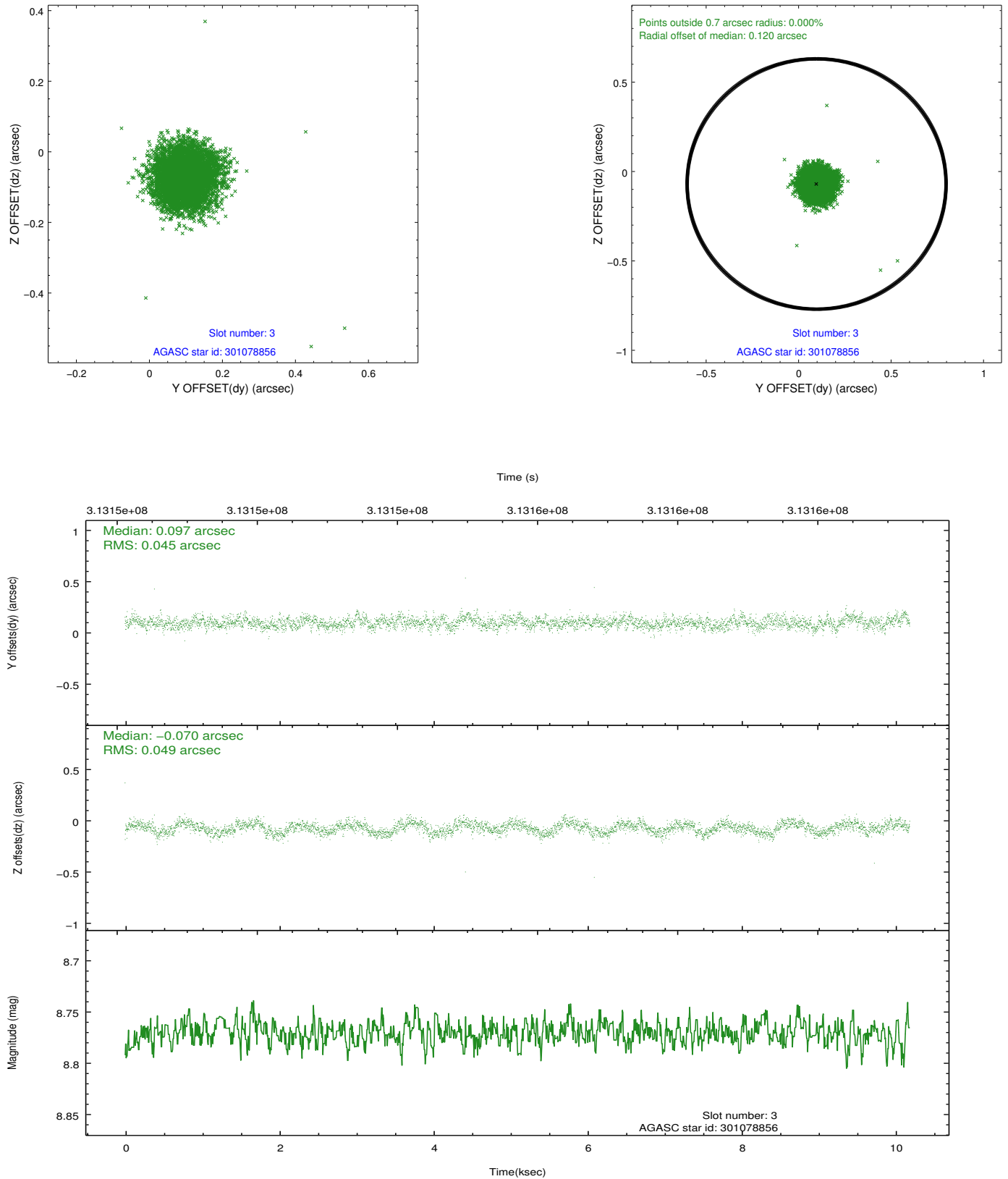


### Slot Statistics

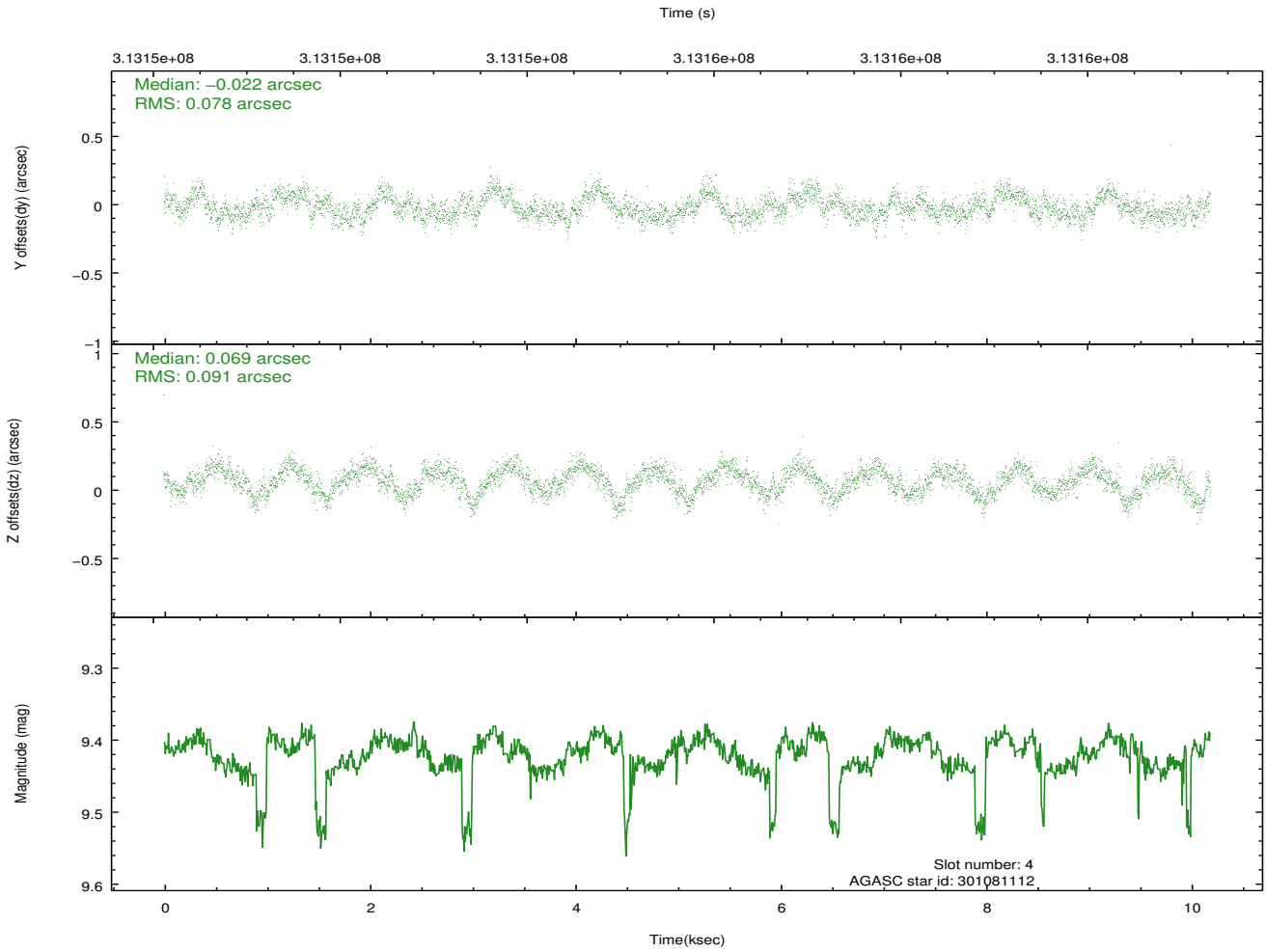
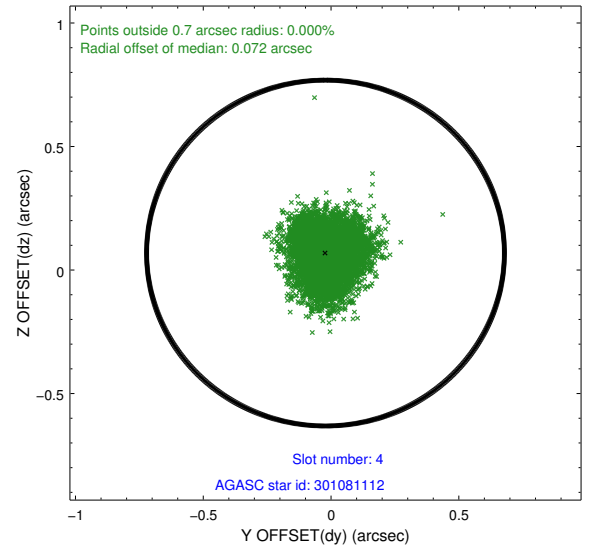
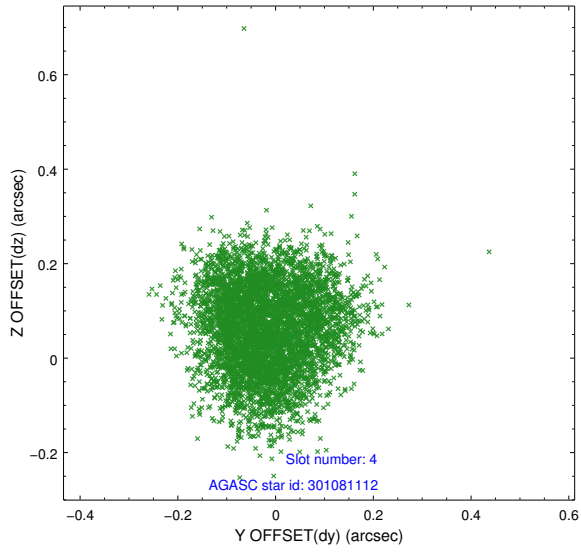
slot	status	id	mag	n_pts	med_dy	med_dz	dr1	dr2	ra	dec	mean_y	mean_z
0	FID	ACIS-S-2	7.09	2485	-0.106	-0.034	0.007	0.011	0.000000	0.000000	-768.49	-1736.15
1	FID	ACIS-S-4	7.19	2486	0.197	0.060	0.006	0.011	0.000000	0.000000	2144.84	171.91
2	FID	ACIS-S-5	7.22	2485	-0.122	-0.018	0.008	0.013	0.000000	0.000000	-1820.70	166.06
3	GUIDE	301078856	8.77	4965	0.097	-0.070	0.071	0.109	22.571949	33.128942	1869.92	-1001.78
4	GUIDE	301081112	9.42	4941	-0.022	0.069	0.129	0.196	23.544549	33.024503	2101.90	1947.11
5	GUIDE	301596784	7.78	4970	-0.023	-0.088	0.068	0.105	23.240683	33.852878	-828.75	880.51
6	GUIDE	301607840	8.55	4967	-0.055	0.046	0.075	0.117	22.721261	34.173904	-1908.59	-723.91
7	GUIDE	301468696	9.72	4894	-0.002	0.052	0.123	0.197	22.346675	34.089931	-1557.26	-1825.65

## 2.4 Star Slots

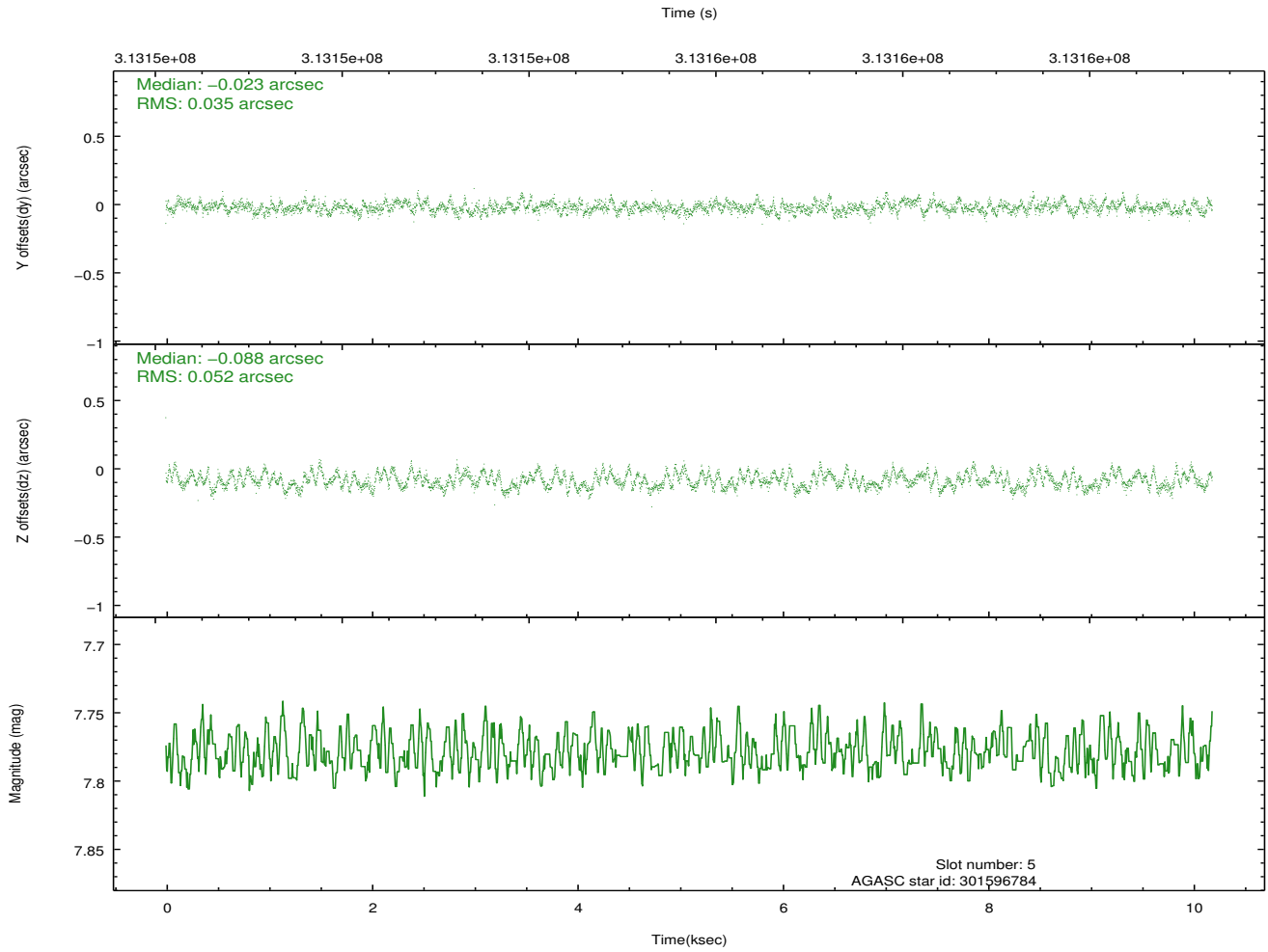
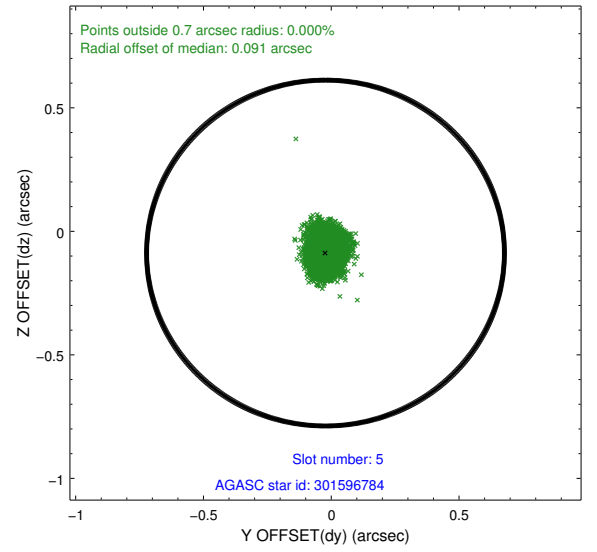
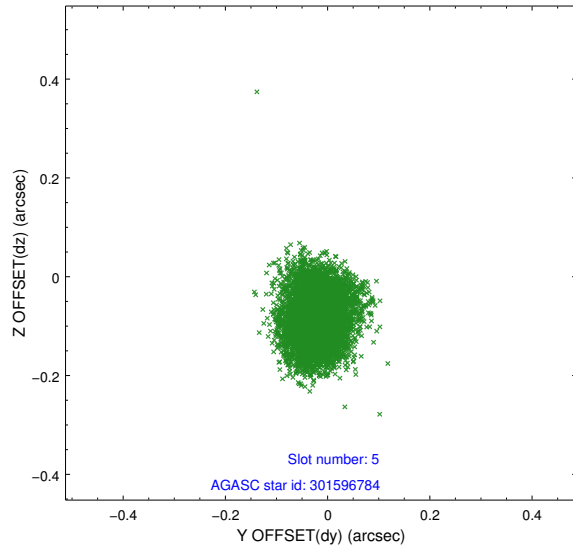
### 2.4.1 Slot 3



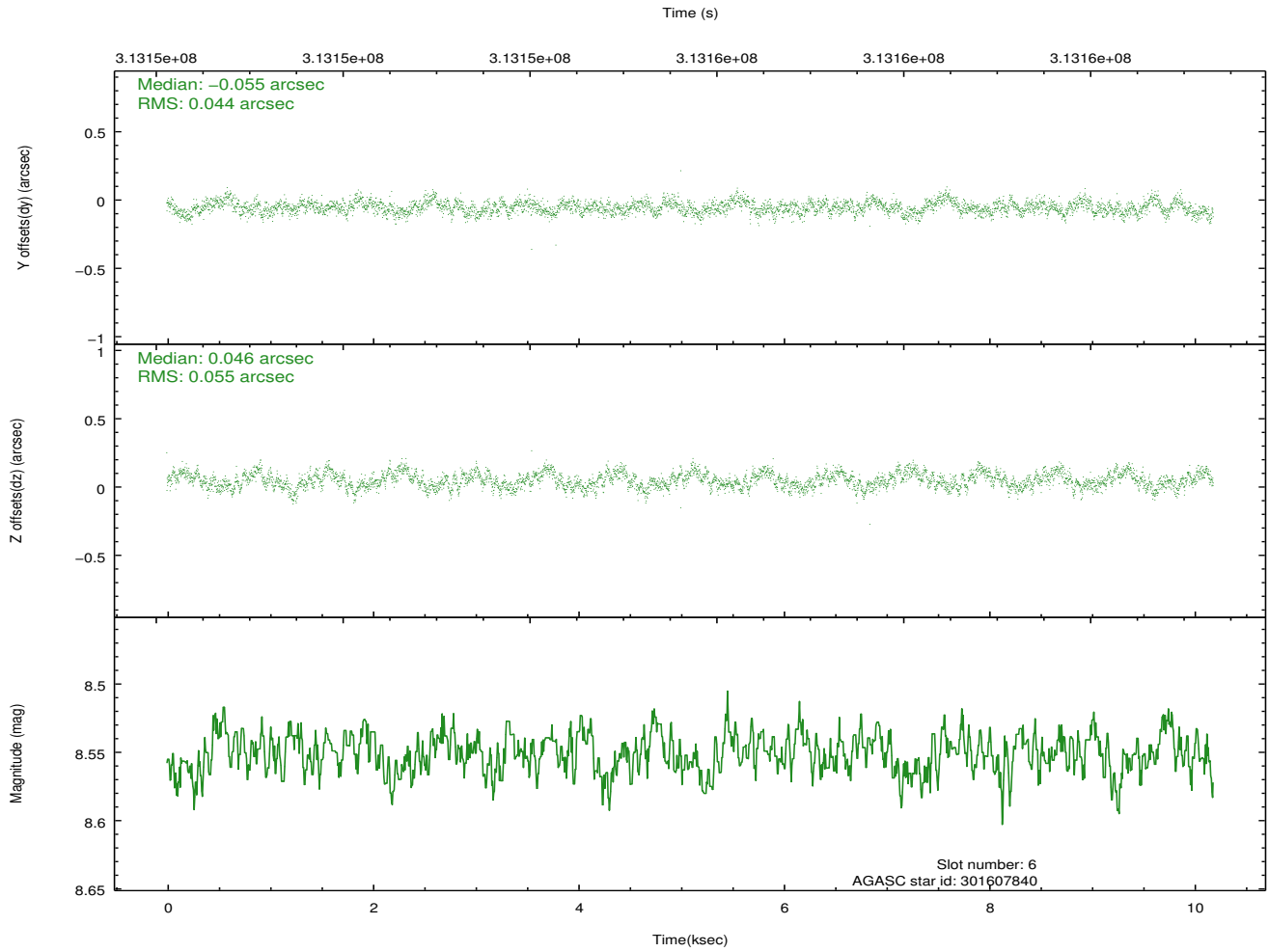
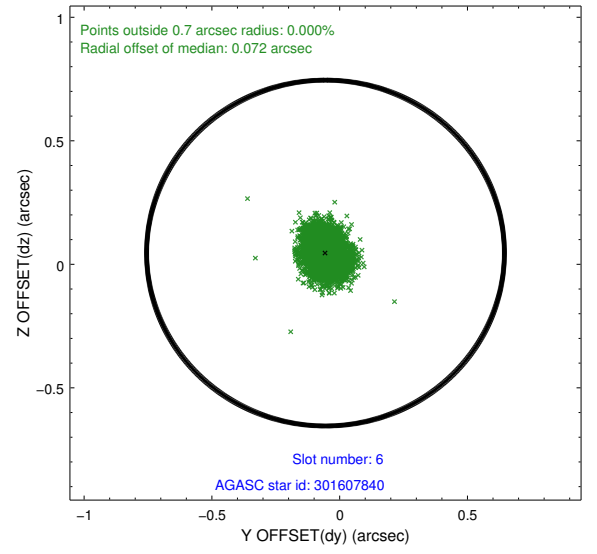
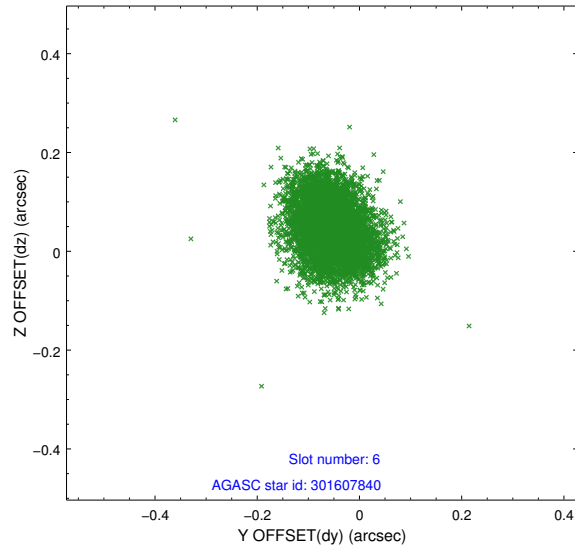
## 2.4.2 Slot 4



### 2.4.3 Slot 5

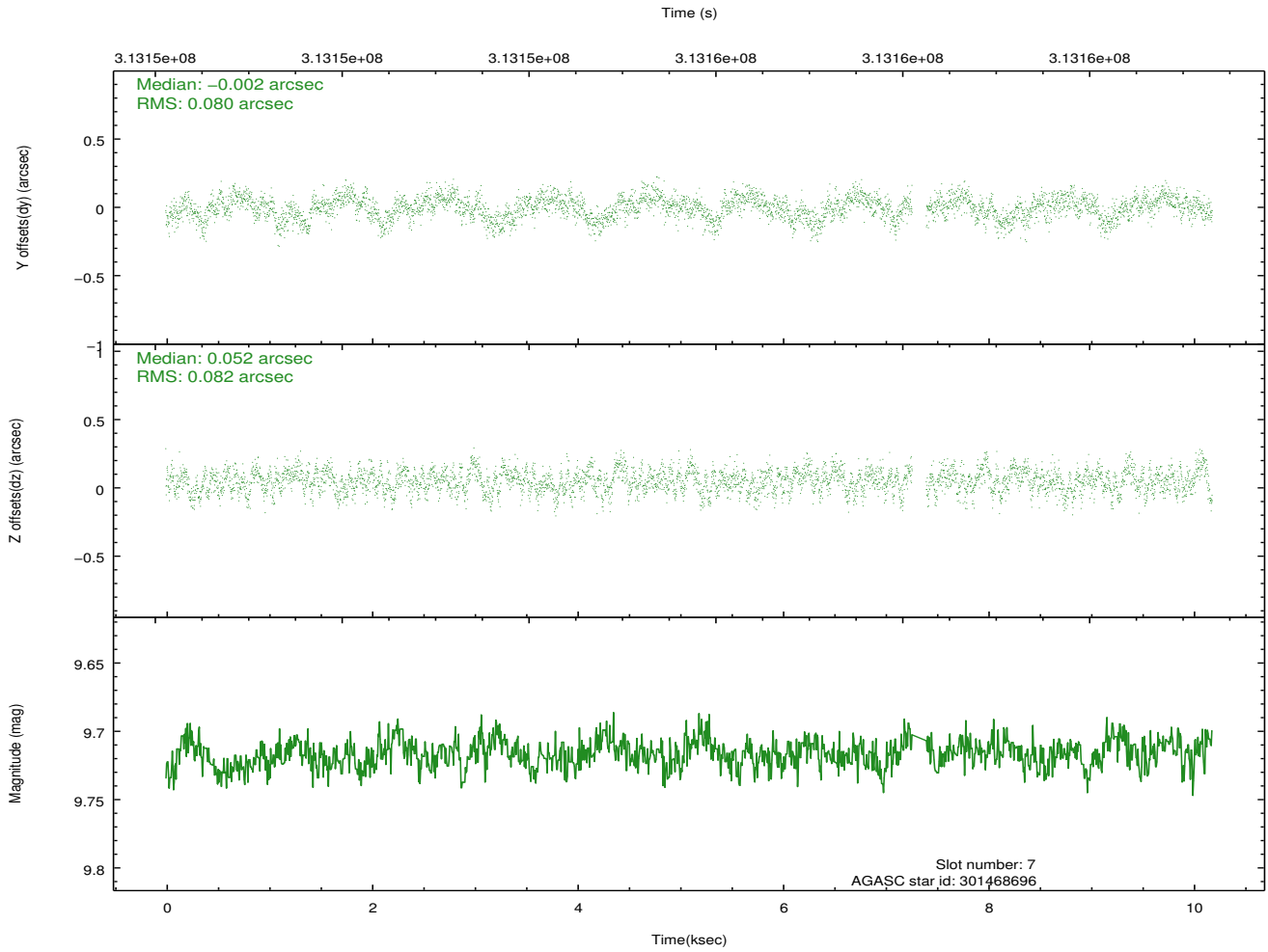
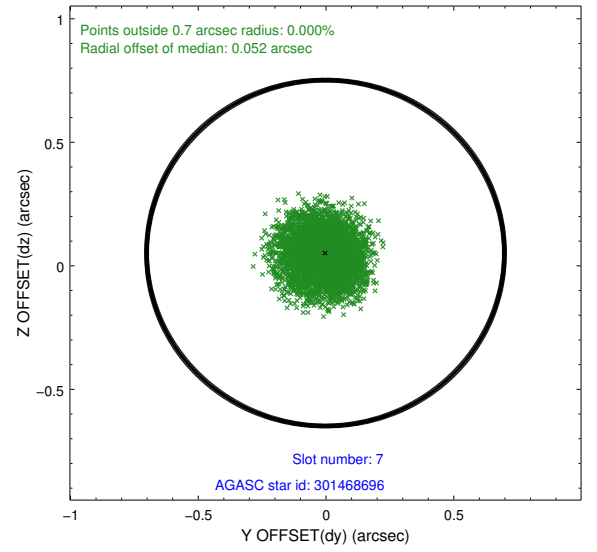
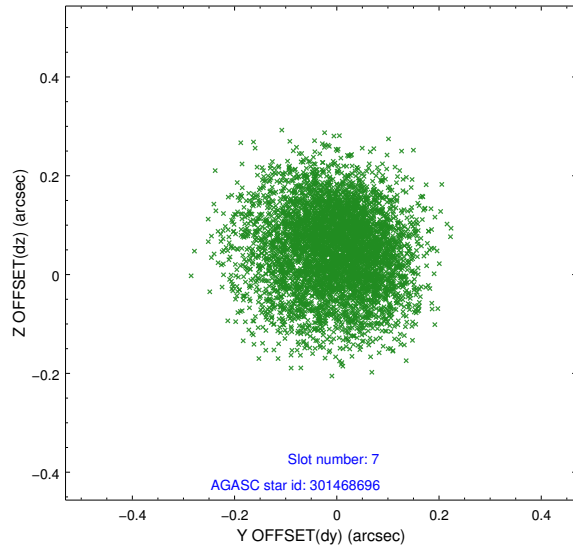


## 2.4.4 Slot 6



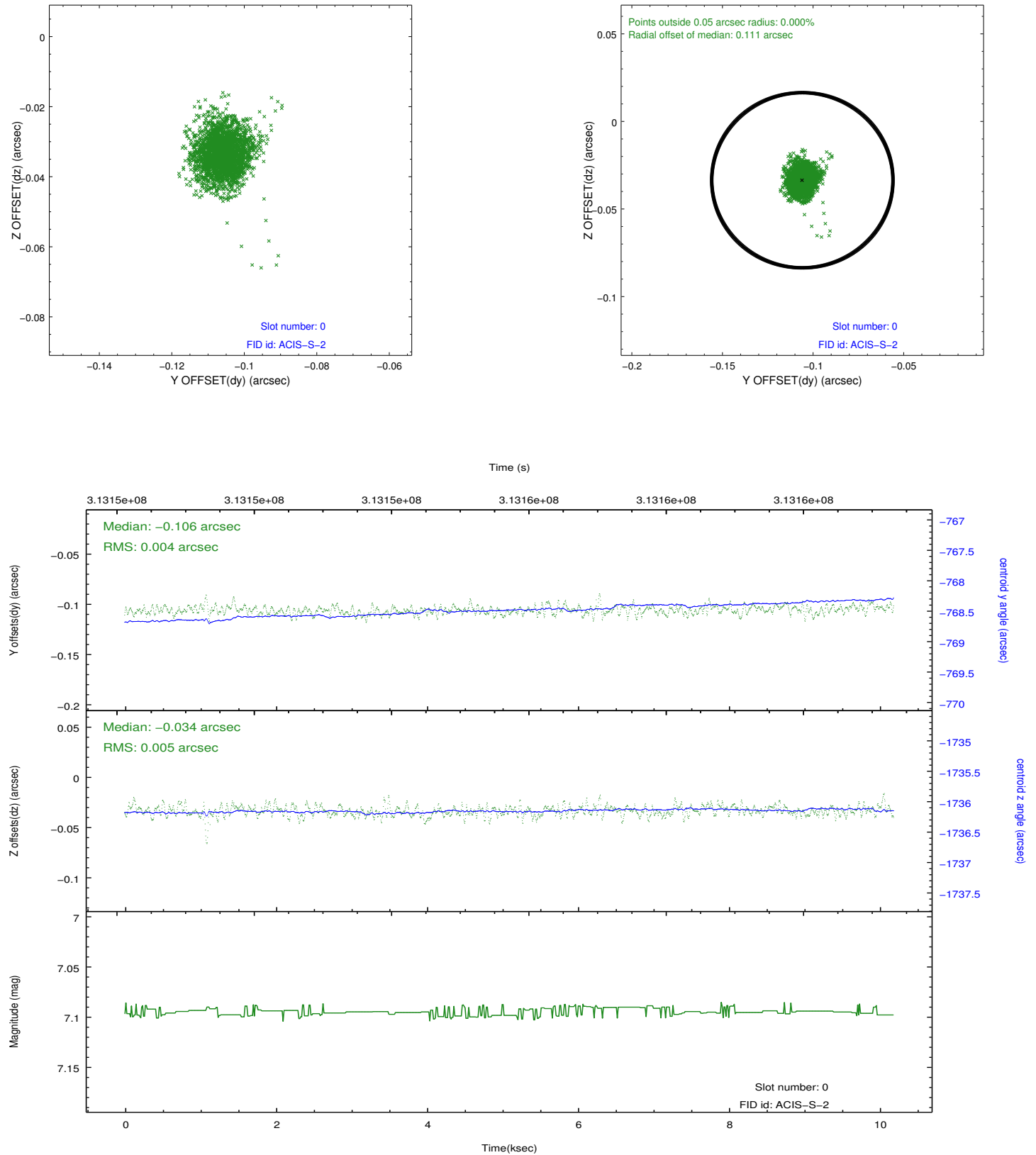


## 2.4.5 Slot 7

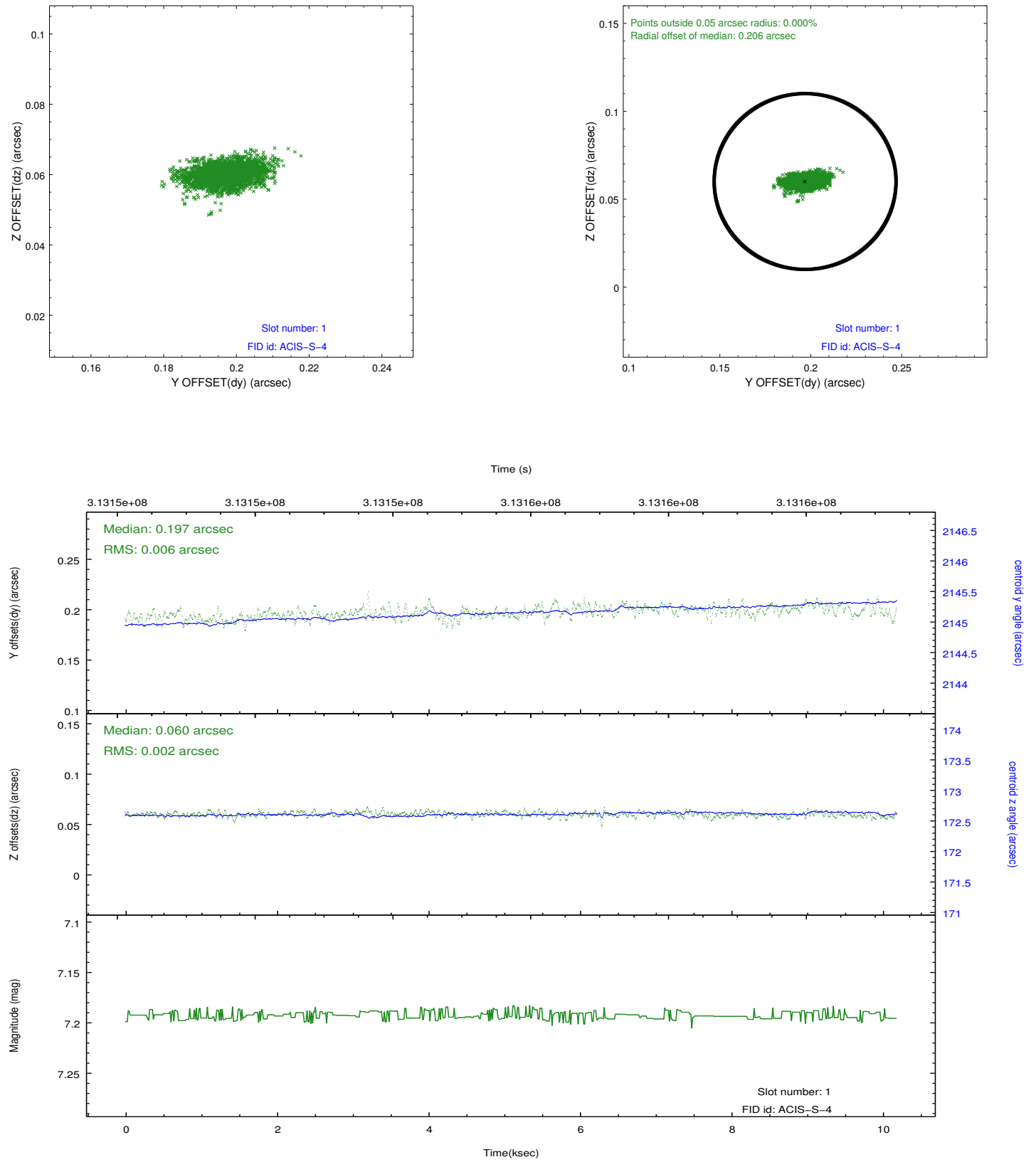


## 2.5 FID Slots

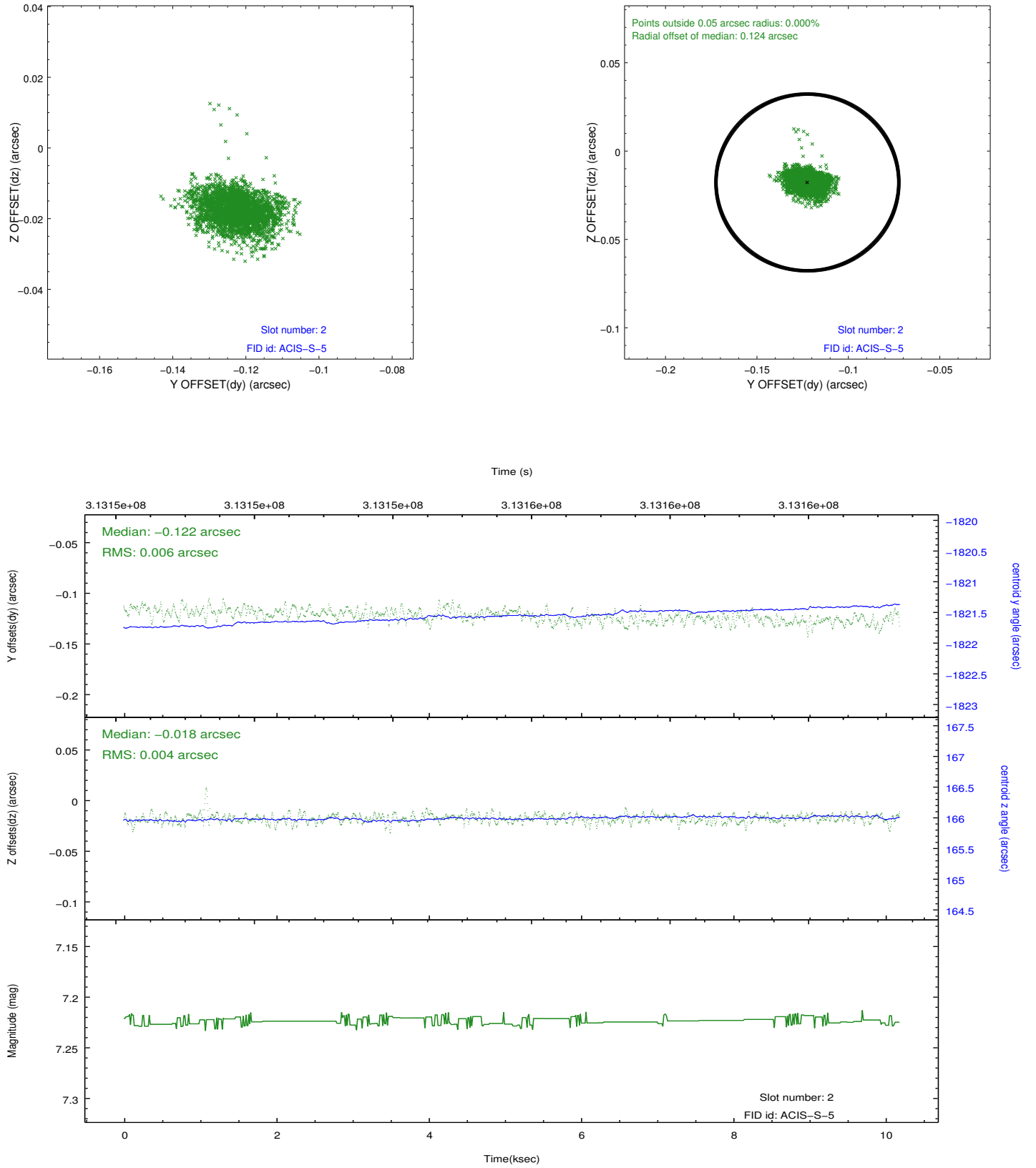
### 2.5.1 Slot 0



## 2.5.2 Slot 1



### 2.5.3 Slot 2



## A Summary

### A.1 Status

V&V Scientist	Jen Lauer
V&V Date (YYYY-MM-DD)	2012.05.08
V&V Edition	1
V&V Disposition and Status	OK
V&V Charge Time	10.1823999

### A.2 Comments