

V&V Reference Report

L2 ASCDS Version : 8.4.4

Observation 9084 - L2 Version 2
Chandra X-Ray Center

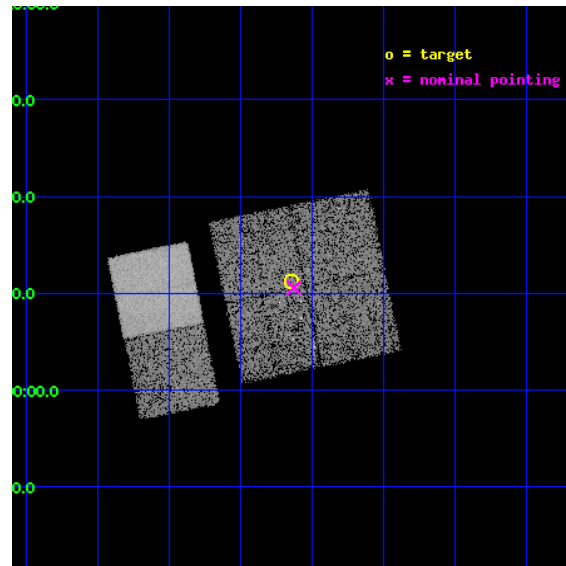
L2 Processing Date : May 19 2012

Contents

1	Front	2
2	OBI	3
2.1	OBI	3
2.1.1	Images	3
2.1.2	Bias	3
2.1.3	Parameters	4
2.1.4	Events	4
2.2	Compared Parameters	5
2.3	Aspect	6
2.4	Star Slots	9
2.4.1	Slot 3	9
2.4.2	Slot 4	10
2.4.3	Slot 5	11
2.4.4	Slot 6	12
2.4.5	Slot 7	13
2.5	FID Slots	14
2.5.1	Slot 0	14
2.5.2	Slot 1	15
2.5.3	Slot 2	16
A	Summary	17
A.1	Status	17
A.2	Comments	17

1 Front

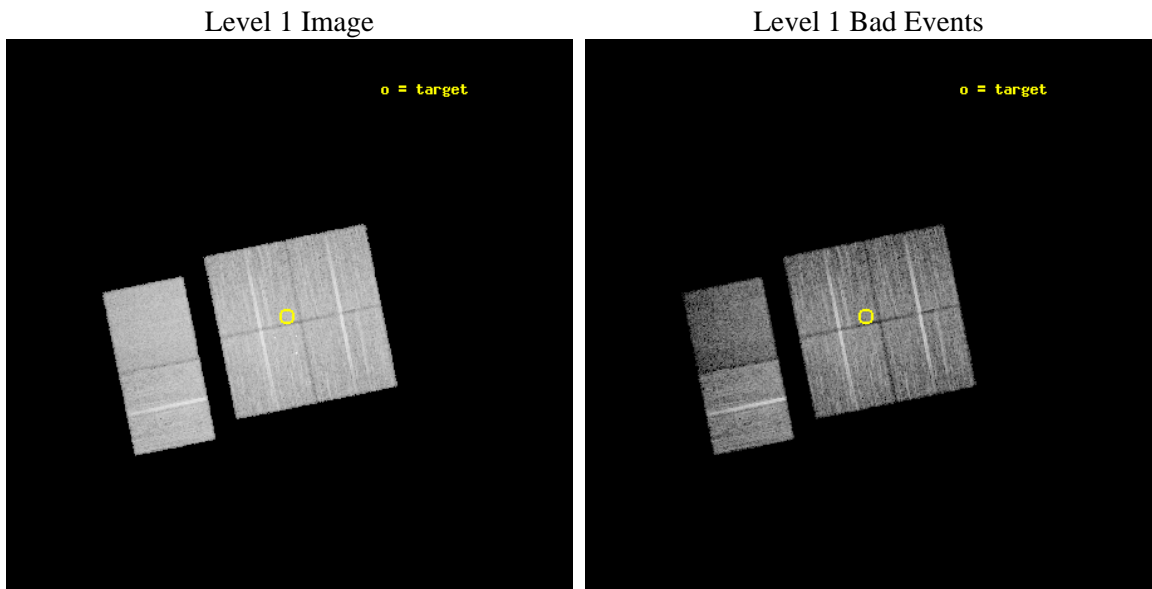
seq_num	500947	Sequence number
obs_id	9084	Observation id
title	Snap-shot survey of potential GeV and TeV pulsars	Proposal title
observer	Professor Gordon Garmire	Principal investigator
object	J1841-0345	Source name
dtcycle	0	
cycle	P	events from which exps? Prim/Second/Both
ra_targ	280.410833	Observer's specified target RA [deg]
dec_targ	-3.811833	Observer's specified target Dec [deg]
ra_nom	280.40651619086	Nominal RA [deg]
dec_nom	-3.8239570249303	Nominal Dec [deg]
roll_nom	258.5295233056	Nominal Roll [deg]
revision	2	Processing version of data
ontime	10137.558972061	Sum of GTIs [s]
livetime	10009.191096251	Livetime [s]
ontime0	10137.558982015	Sum of GTIs [s]
ontime1	10137.558952093	Sum of GTIs [s]
ontime2	10140.799962282	Sum of GTIs [s]
ontime3	10137.558972061	Sum of GTIs [s]
ontime6	10140.799962282	Sum of GTIs [s]
ontime7	10140.799962282	Sum of GTIs [s]
l2events	69707	Number of level 2 events



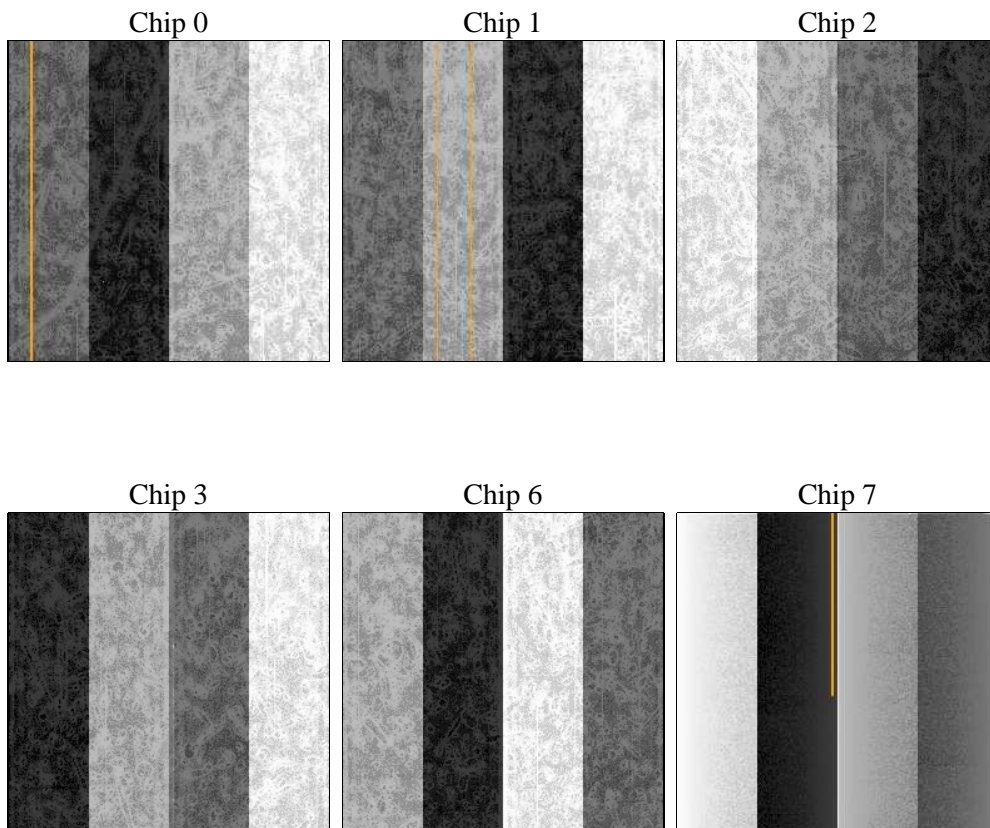
2 OBI

2.1 OBI

2.1.1 Images



2.1.2 Bias



2.1.3 Parameters

obi_num	0	Obi number	sched_exp_time	10000.000000	[s] Scheduled observation exposure time
ascdsver	8.4.4	Processing system revision	ontime	10137.558972061	Sum of GTIs [s]
caldsver	4.4.9	 	ontime0	10137.558982015	Sum of GTIs [s]
date	2012-05-19T21:08:04	Date and time of file creation	ontime1	10137.558952093	Sum of GTIs [s]
revision	2	Processing version of data	ontime2	10140.799962282	Sum of GTIs [s]
			ontime3	10137.558972061	Sum of GTIs [s]
			ontime6	10140.799962282	Sum of GTIs [s]
			ontime7	10140.799962282	Sum of GTIs [s]
			l1events	464159	Number of level 1 events

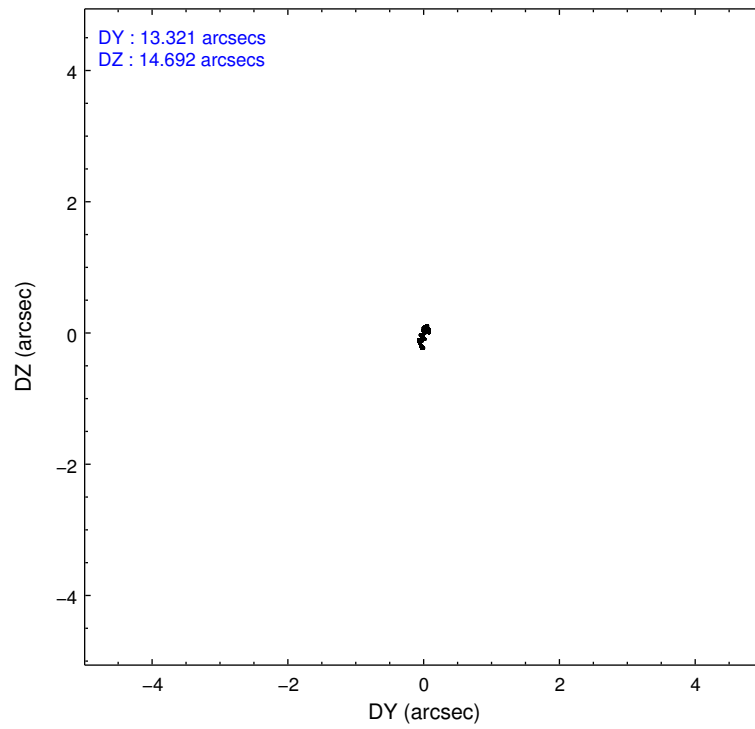
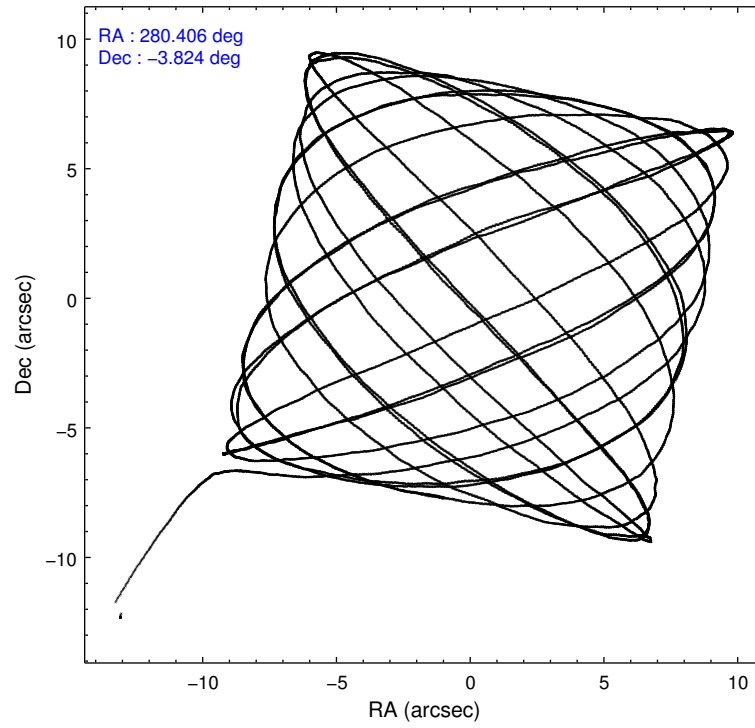
2.1.4 Events

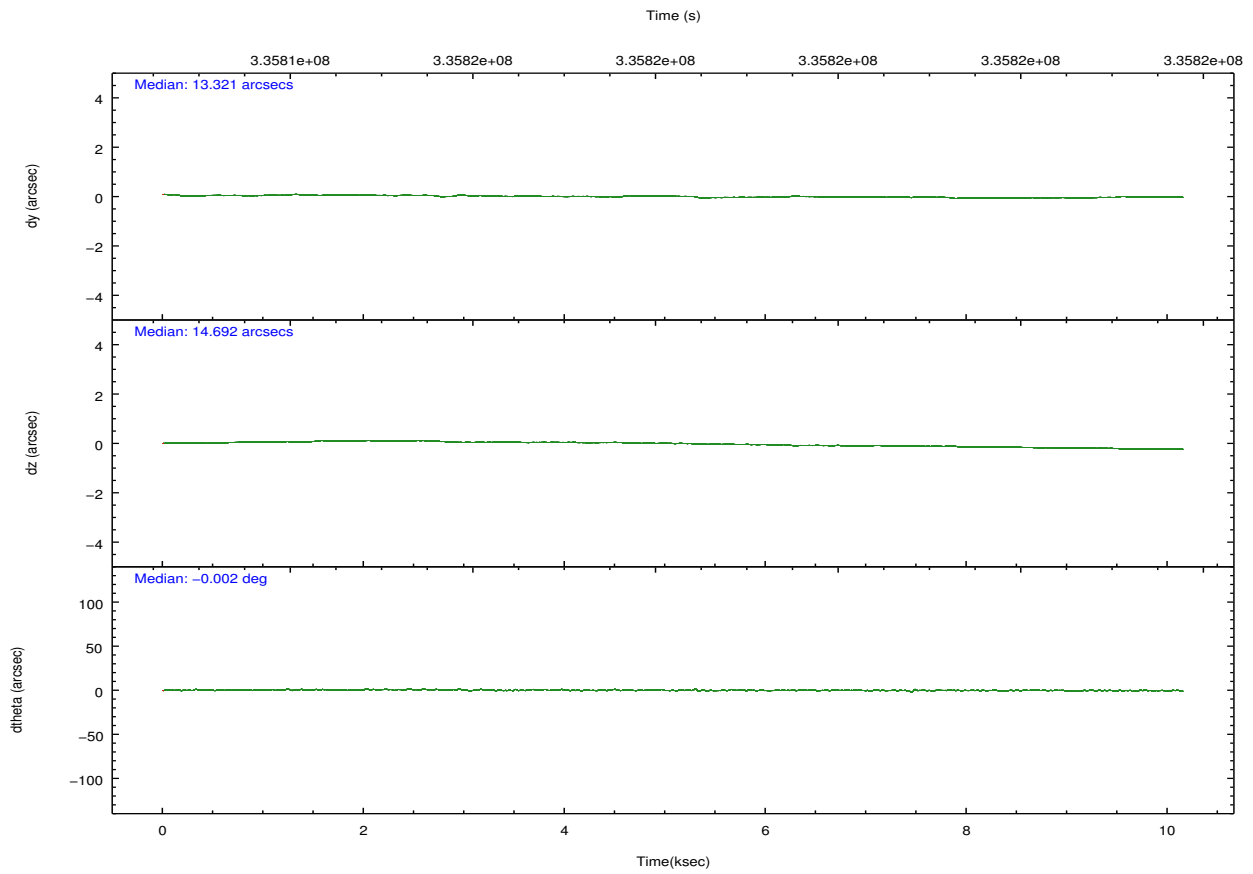
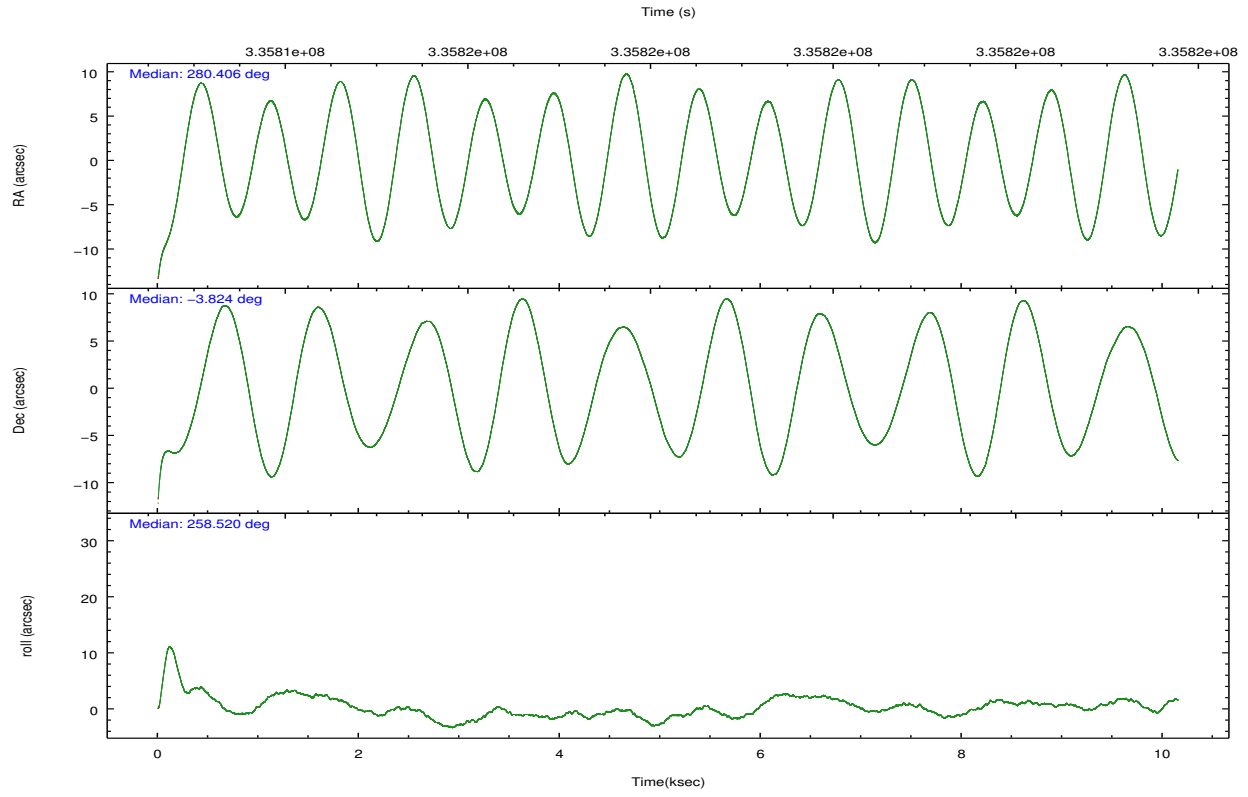
	ccd 0	ccd 1	ccd 2	ccd 3	ccd 6	ccd 7		ccd 0	ccd 1	ccd 2	ccd 3	ccd 6	ccd 7
level 1 events	74255	70094	84725	76075	82793	76217	grade 0 events	3193	3190	3713	2952	3289	3753
rejected events	66245	61838	76182	68444	74231	39454		4%	4%	4%	3%	3%	4%
rejected %	89%	88%	89%	89%	89%	51%	grade 1 events	42	34	65	34	40	113
								0%	0%	0%	0%	0%	0%
							grade 2 events	1924	1807	1990	1684	1879	7944
								2%	2%	2%	2%	2%	10%
							grade 3 events	870	897	781	867	896	3383
								1%	1%	0%	1%	1%	4%
							grade 4 events	765	847	862	789	904	3396
								1%	1%	1%	1%	1%	4%
							grade 5 events	2279	2557	2150	2750	2672	8159
								3%	3%	2%	3%	3%	10%
							grade 6 events	1397	1648	1333	1446	1739	18851
								1%	2%	1%	1%	2%	24%
							grade 7 events	63785	59114	73831	65553	71374	30618
								85%	84%	87%	86%	86%	40%

2.2 Compared Parameters

Parameter	Planned	Actual	Parameter	Planned	Actual
Instrument	ACIS	ACIS	Obspar format version number	7	7
Detector	ACIS-012367	ACIS-012367	Obspar file type	PREDICTED	ACTUAL
Grating	NONE	NONE	Obspar update status	NONE	UPDATED
Data mode	VFAINT	VFAINT	CCD I0 on	Y	Y
Observation mode	POINTING	POINTING	CCD I1 on	Y	Y
[deg] Pointing RA	280.397686	280.4065161908587	CCD I2 on	Y	Y
[deg] Pointing Dec	-3.797888	-3.823957024930303	CCD I3 on	Y	Y
[deg] Pointing Roll	258.320263	258.5295233055976	CCD S0 on	N	N
[mm] SIM focus pos	-0.782348	-0.7809083437167272	CCD S1 on	N	N
[mm] SIM defocus	0	0.001439871863259334	CCD S2 on	O2	Y
[mm] SIM translation stage pos	-232.122463	-232.1215886400192	CCD S3 on	O1	Y
[mm] SIM translation stage offset	-1.47	-1.470864362910476	CCD S4 on	N	N
[s] Observation start time (MET)	335813278.184000	335812149.63853	CCD S5 on	N	N
Observation start date	2008-08-22T17:26:53	2008-08-22T17:09:09	Number of optional ACIS chips dropped	0	0
[s] Observation end time (MET)	335823278.184000	335823794.6641	On-chip summing requested	N	N
Observation end date	2008-08-22T20:13:33	2008-08-22T20:23:14	Subarray requested	NONE	NONE
Read mode	TIMED	TIMED	Alternating exposures requested	N	N
			[s] Primary exposure time	0.000000	3.2

2.3 Aspect



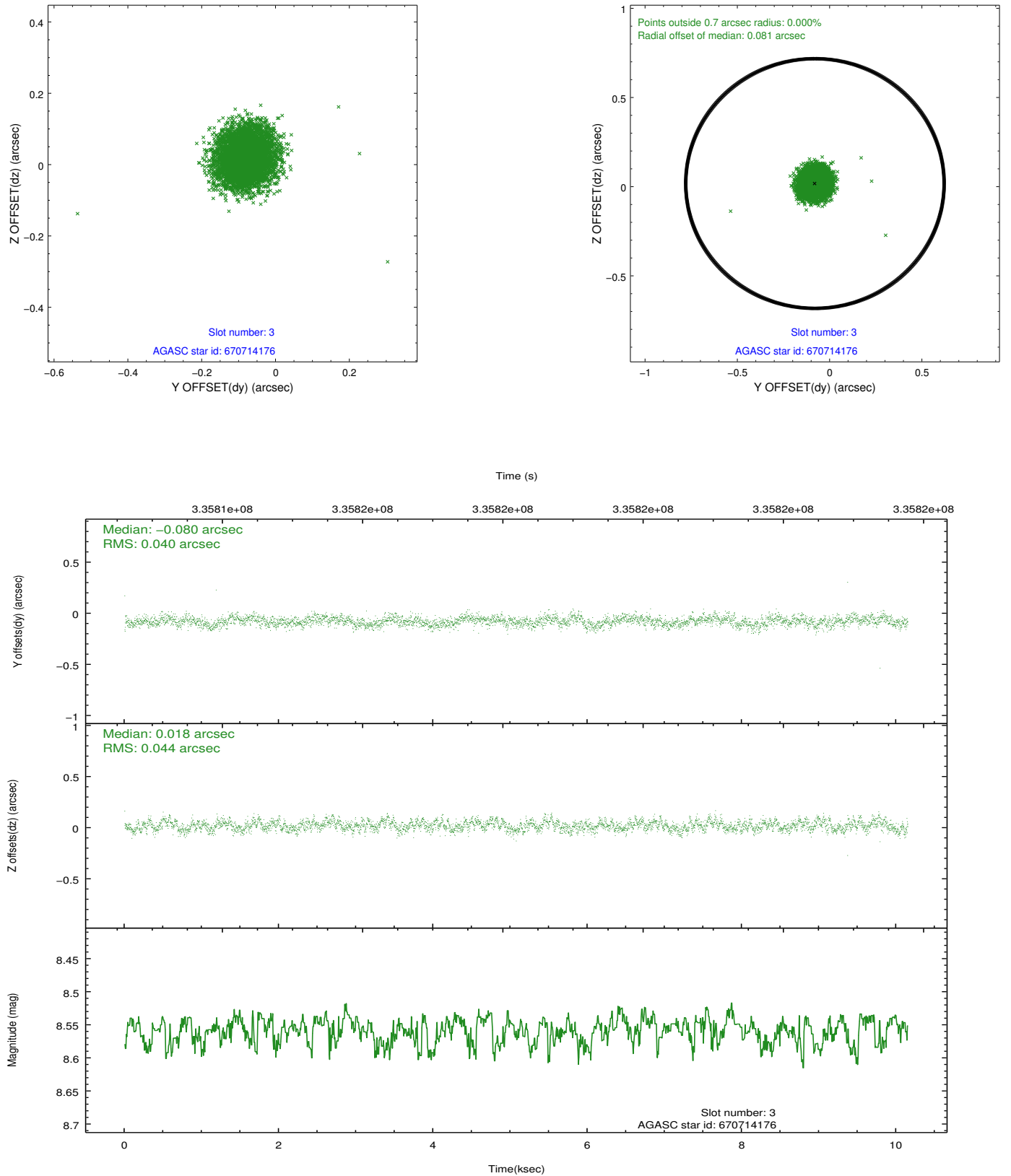


Slot Statistics

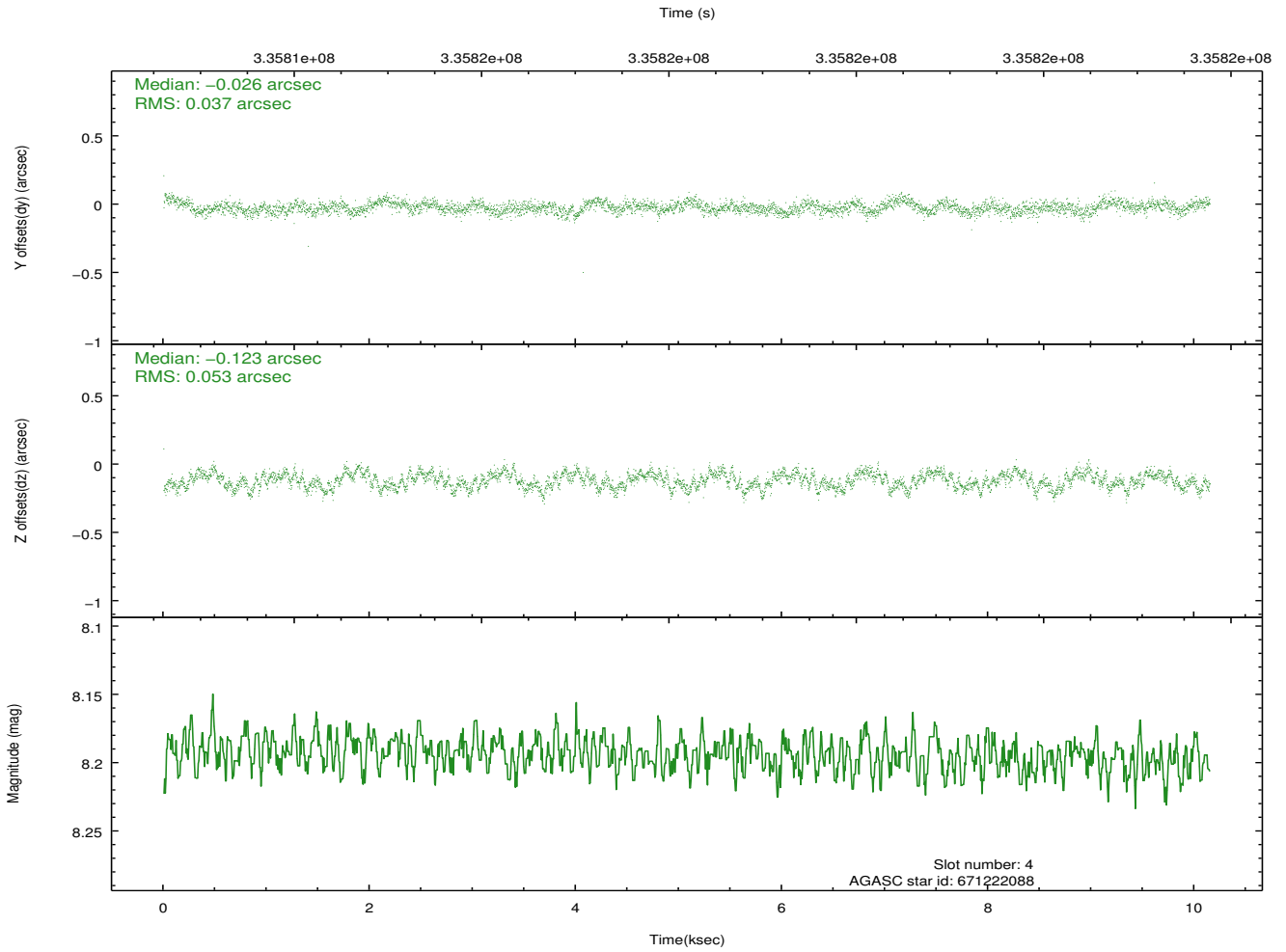
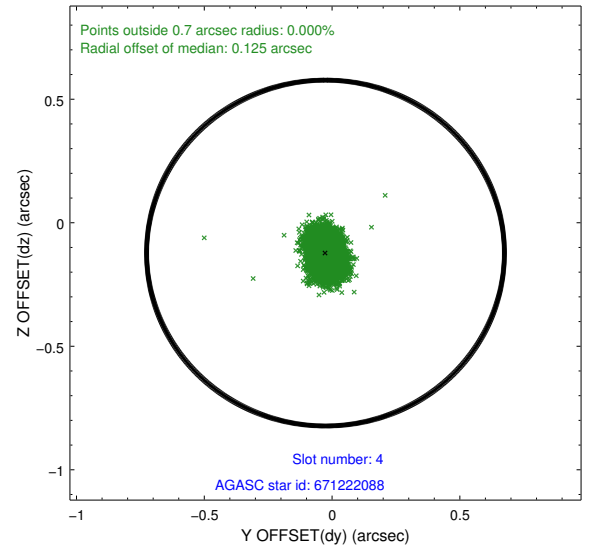
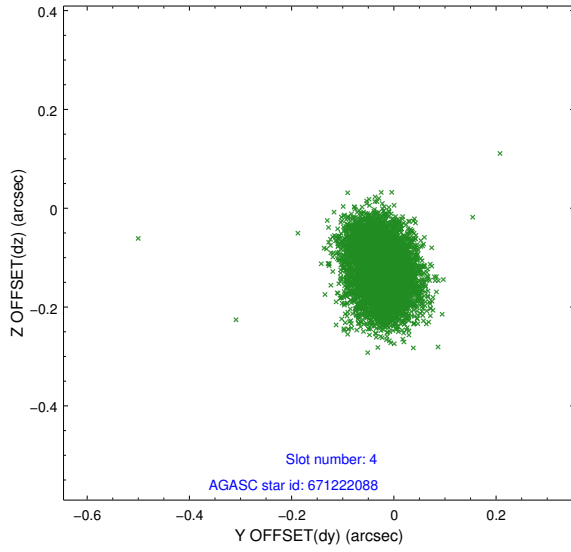
slot	status	id	mag	n_pts	med_dy	med_dz	dr1	dr2	ra	dec	mean_y	mean_z
0	FID	ACIS-I-1	7.06	2475	0.038	-0.000	0.008	0.014	0.000000	0.000000	926.19	-868.36
1	FID	ACIS-I-5	7.05	2476	-0.238	0.037	0.007	0.011	0.000000	0.000000	-1821.90	1028.89
2	FID	ACIS-I-6	7.06	2476	0.109	0.034	0.007	0.011	0.000000	0.000000	391.24	1673.98
3	GUIDE	670714176	8.56	4949	-0.080	0.018	0.063	0.100	280.233424	-3.684215	-280.84	-660.60
4	GUIDE	671222088	8.19	4951	-0.026	-0.123	0.069	0.109	280.484932	-4.110652	1039.42	534.81
5	GUIDE	671224408	8.95	4948	-0.023	0.102	0.067	0.110	280.545473	-4.404085	2030.47	961.82
6	GUIDE	671225720	9.10	4938	0.034	-0.111	0.117	0.182	279.761394	-4.102444	1538.30	-2014.72
7	GUIDE	671224168	7.34	4951	0.095	0.114	0.052	0.083	280.307659	-3.817213	134.43	-302.71

2.4 Star Slots

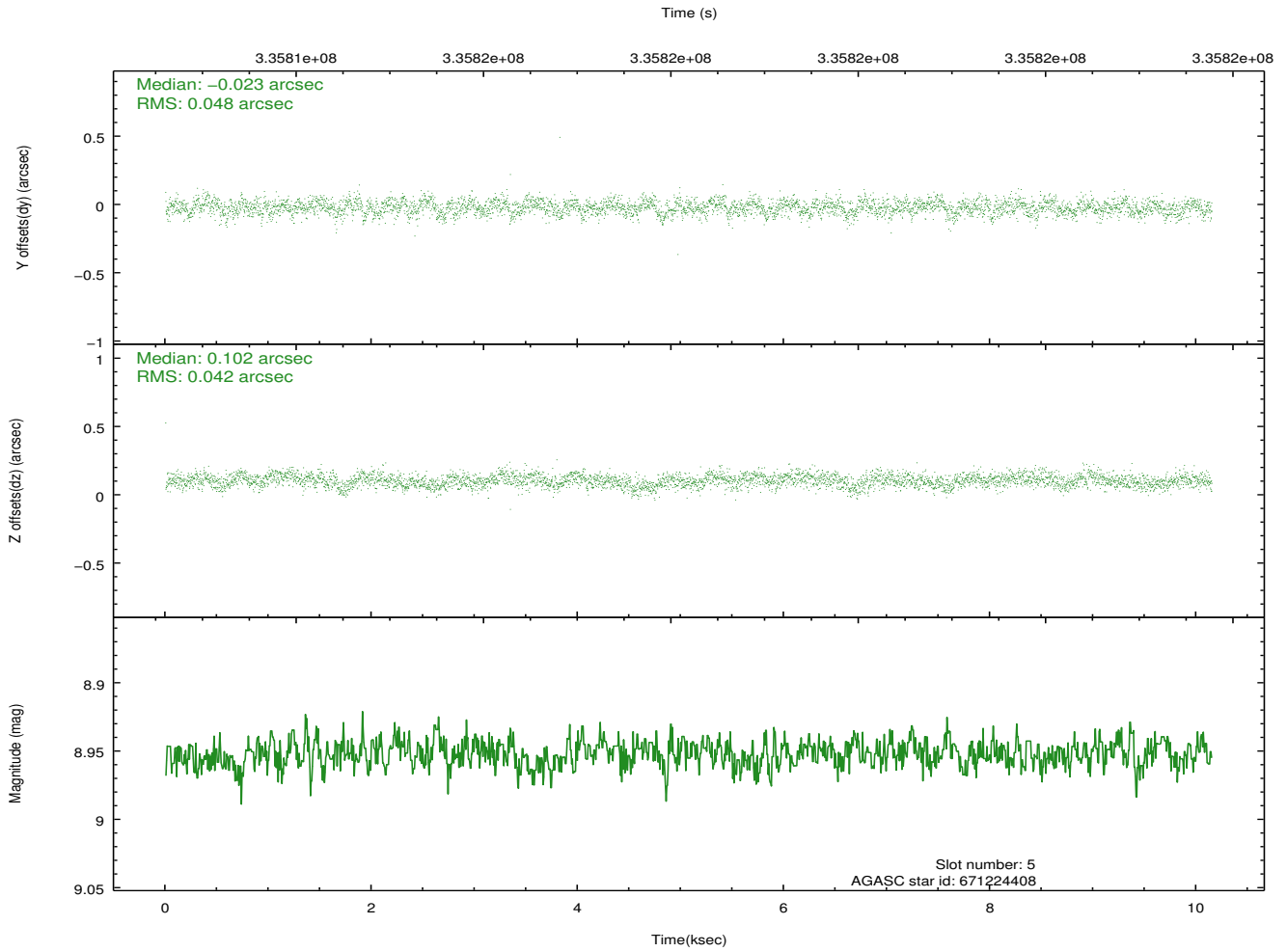
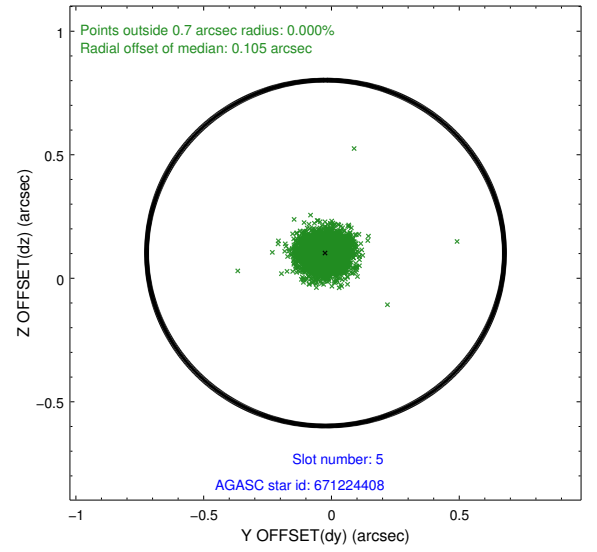
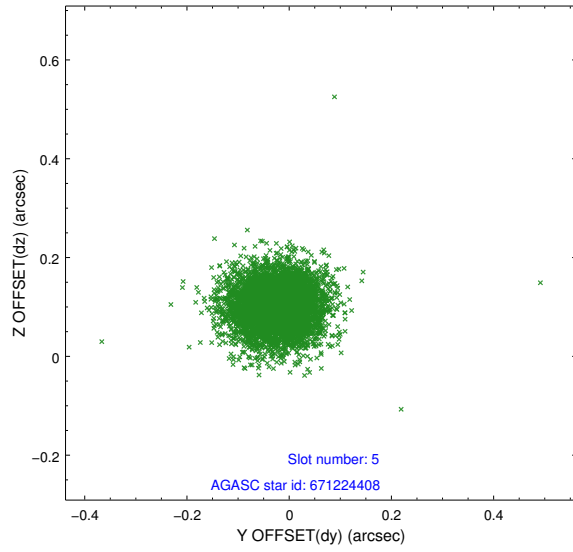
2.4.1 Slot 3



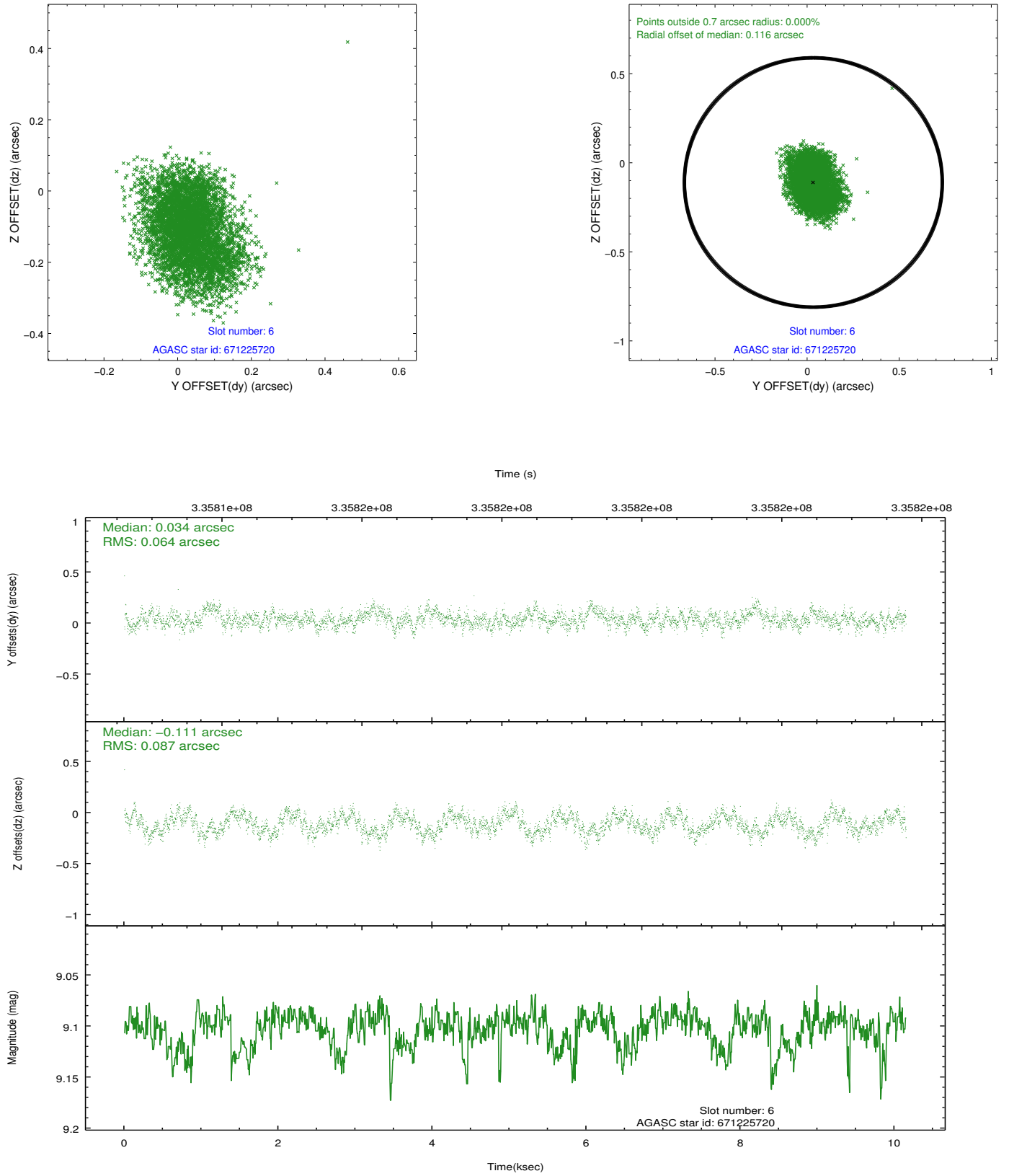
2.4.2 Slot 4



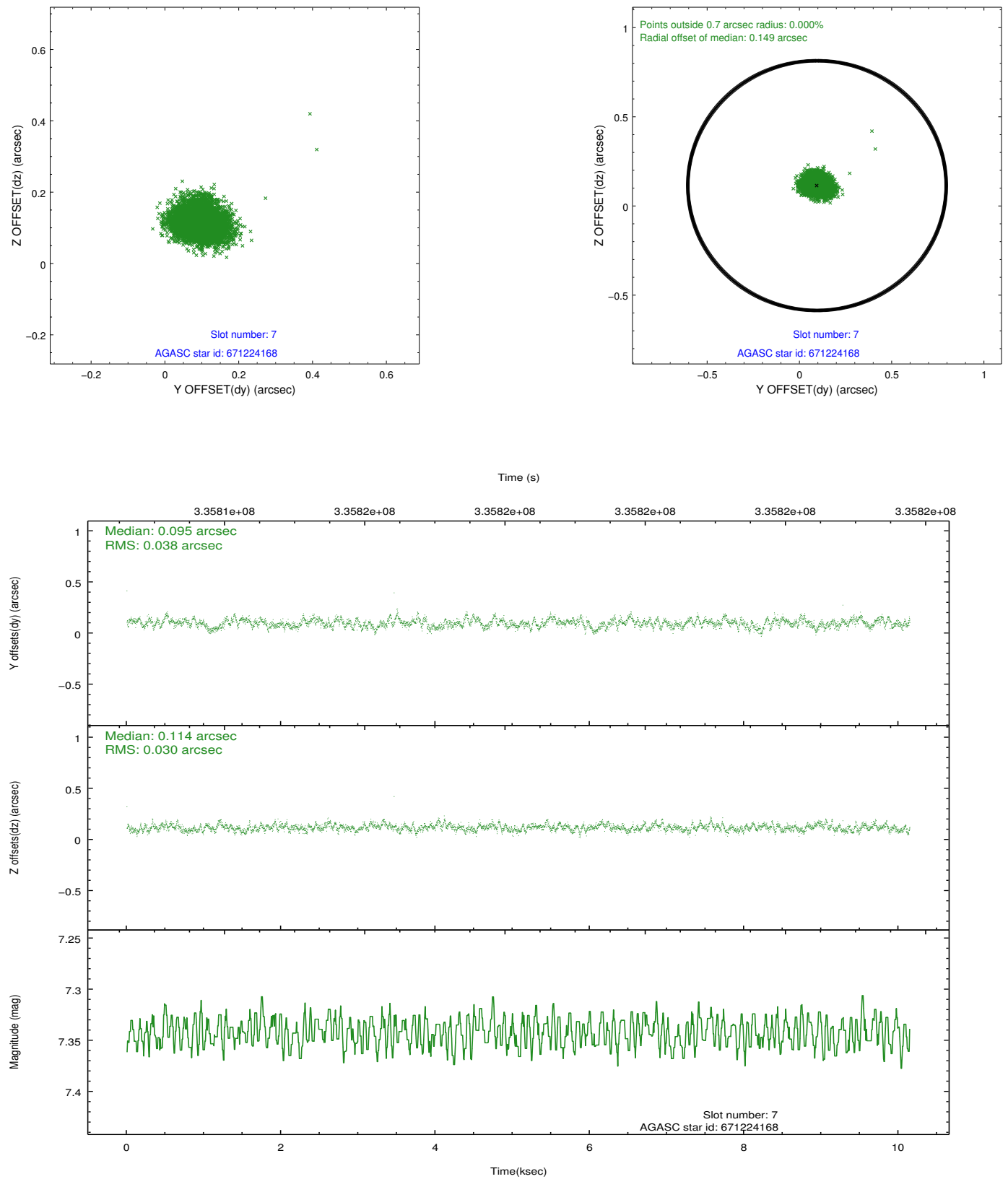
2.4.3 Slot 5



2.4.4 Slot 6

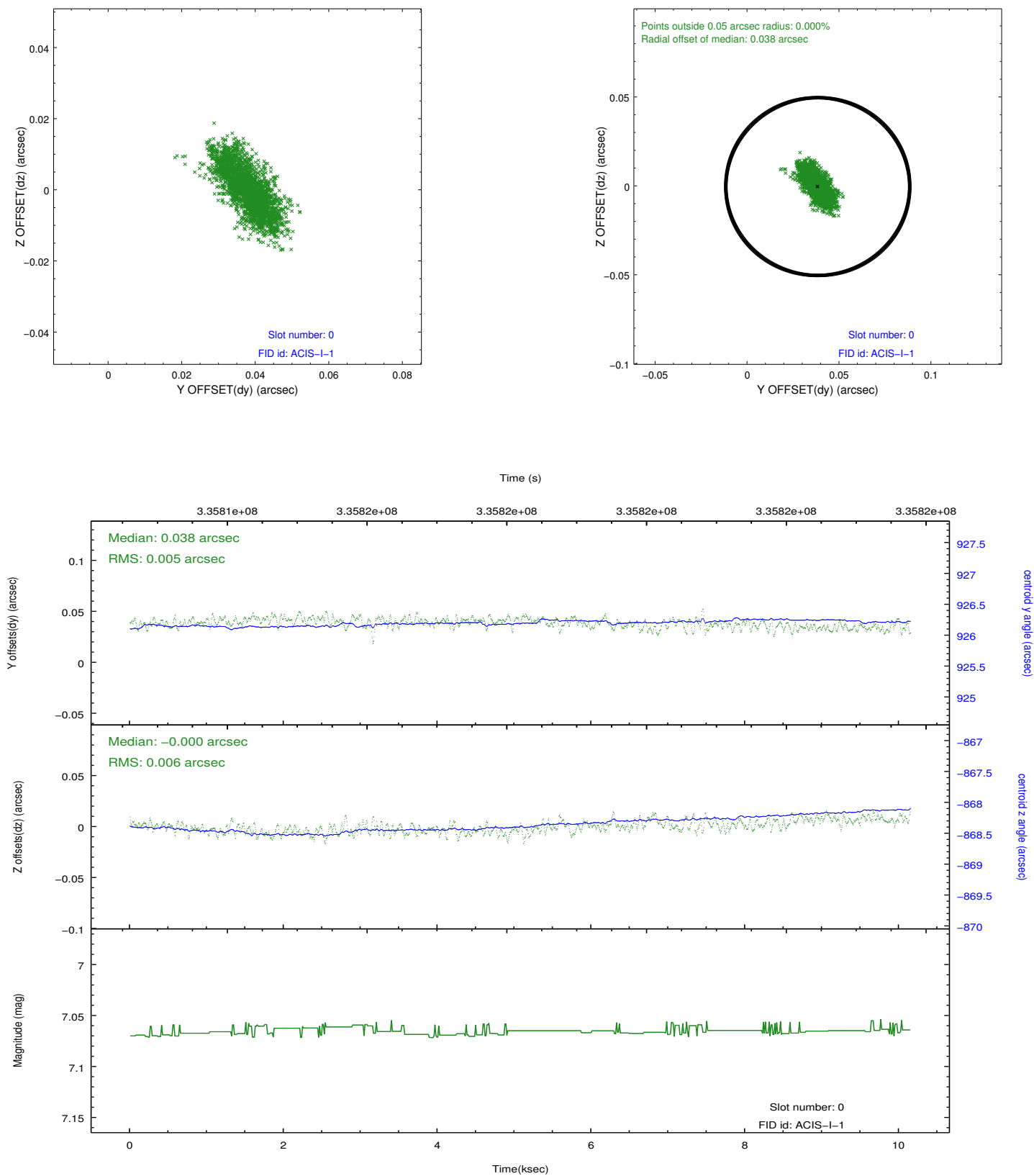


2.4.5 Slot 7

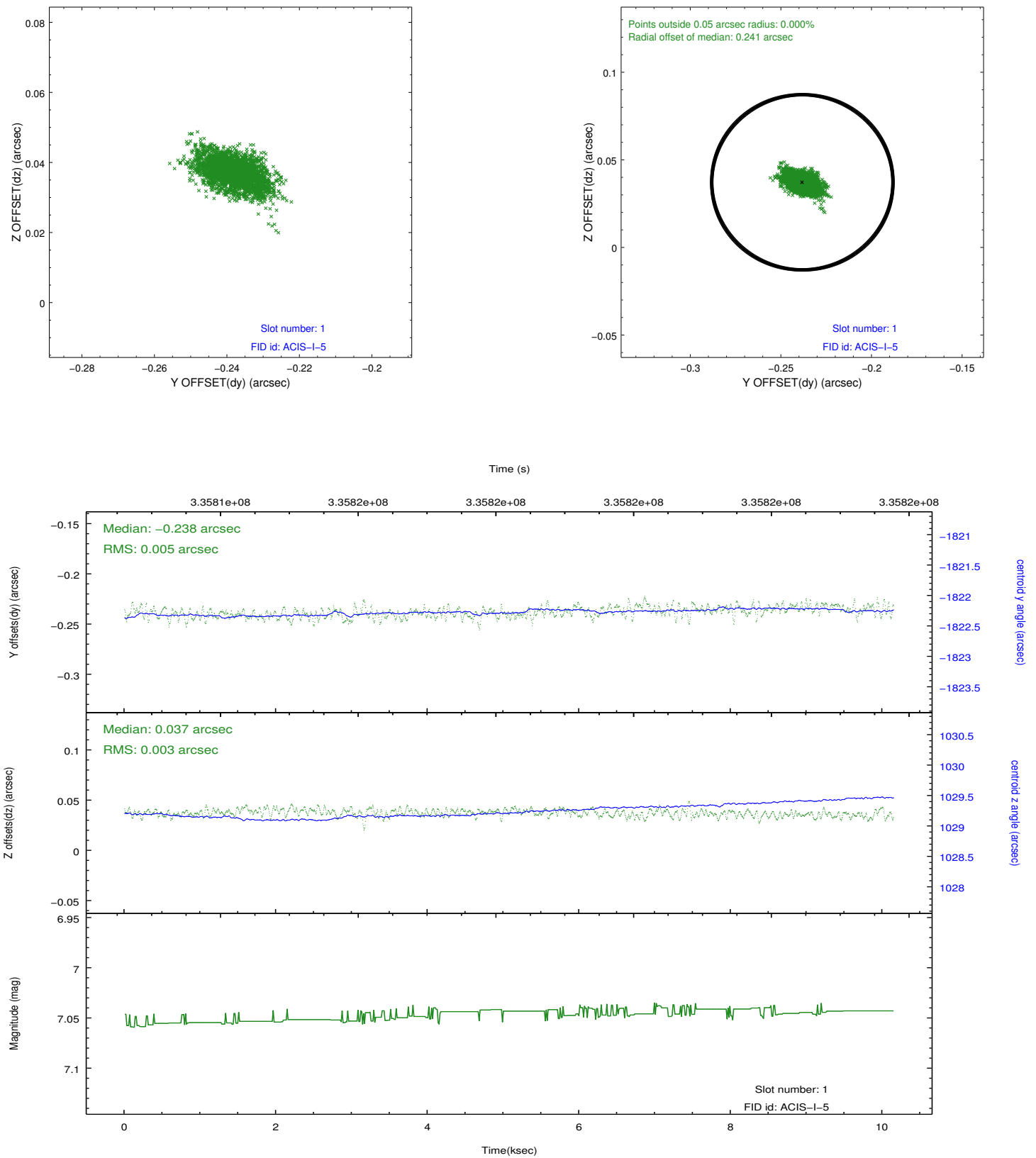


2.5 FID Slots

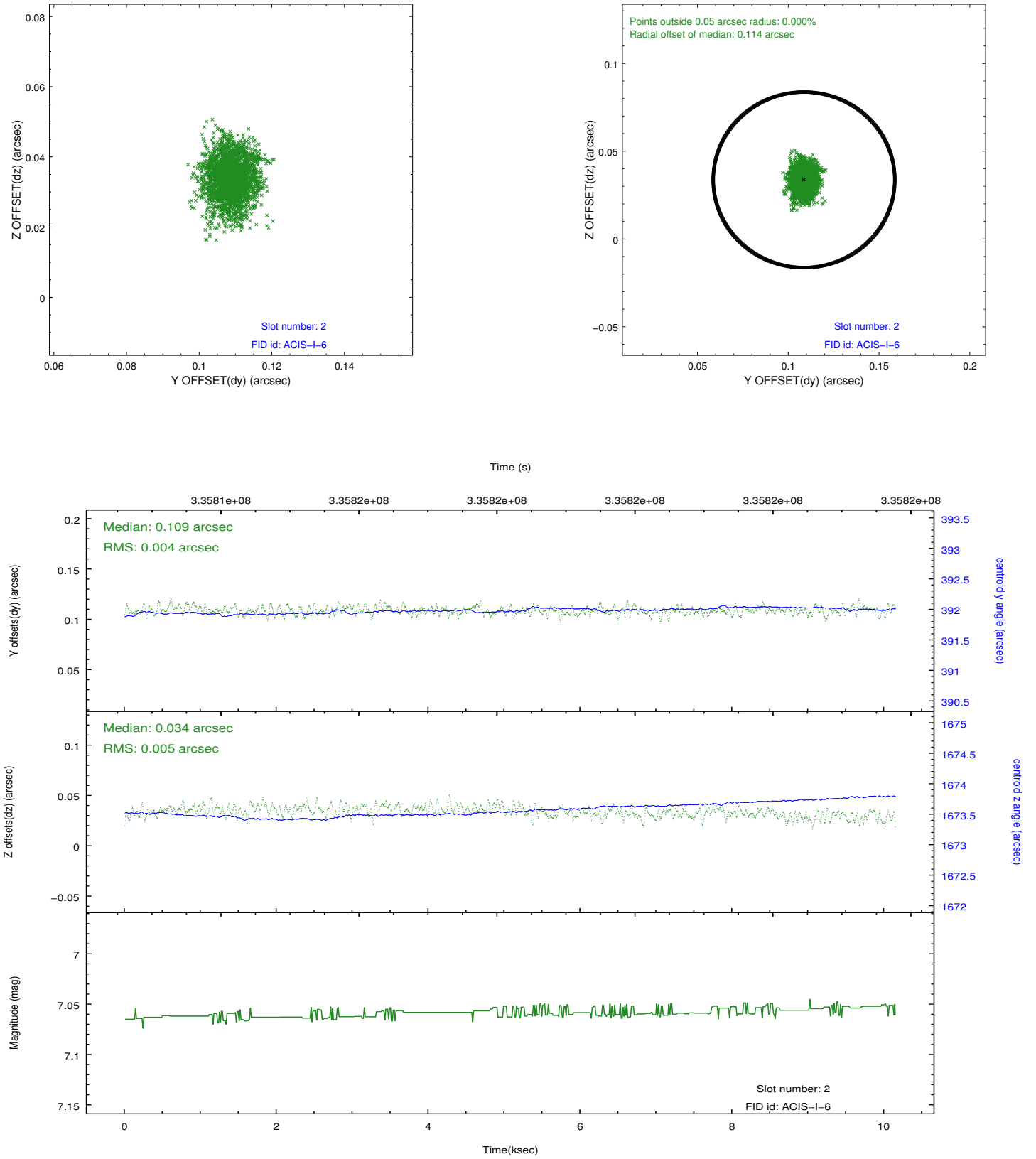
2.5.1 Slot 0



2.5.2 Slot 1



2.5.3 Slot 2



A Summary

A.1 Status

V&V Scientist	Beth Sundheim
V&V Date (YYYY-MM-DD)	2012.05.27
V&V Edition	1
V&V Disposition and Status	OK
V&V Charge Time	10.1375589

A.2 Comments