

V&V Reference Report

L2 ASCDS Version : 8.4.4

Observation 9080 - L2 Version 2
Chandra X-Ray Center

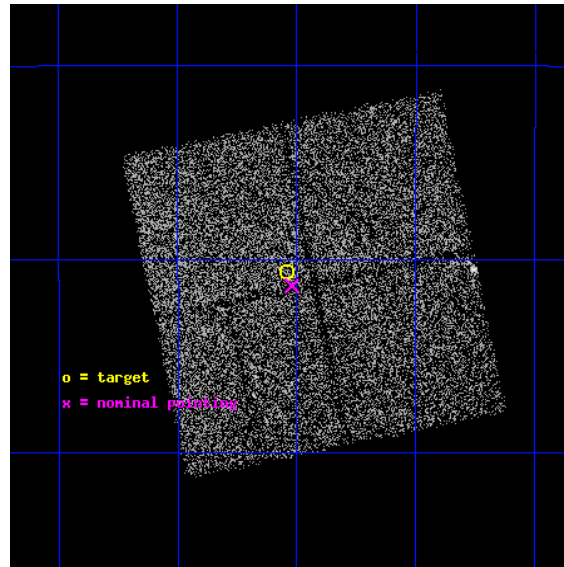
L2 Processing Date : May 25 2012

Contents

1	Front	2
2	OBI	3
2.1	OBI	3
2.1.1	Images	3
2.1.2	Bias	3
2.1.3	Parameters	4
2.1.4	Events	4
2.2	Compared Parameters	5
2.3	Aspect	6
2.4	Star Slots	9
2.4.1	Slot 3	9
2.4.2	Slot 4	10
2.4.3	Slot 5	11
2.4.4	Slot 6	12
2.4.5	Slot 7	13
2.5	FID Slots	14
2.5.1	Slot 0	14
2.5.2	Slot 1	15
2.5.3	Slot 2	16
A	Summary	17
A.1	Status	17
A.2	Comments	17

1 Front

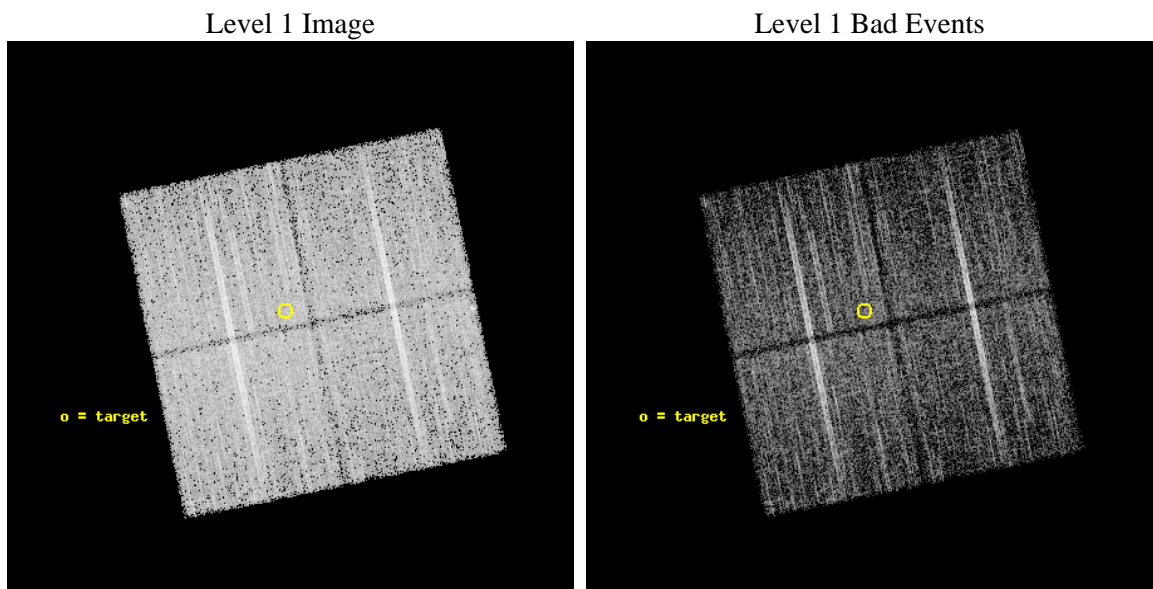
seq_num	500943	Sequence number
obs_id	9080	Observation id
title	Snap-shot survey of potential GeV and TeV pulsars	Proposal title
observer	Professor Gordon Garmire	Principal investigator
object	J1730-3350	Source name
dtcycle	0	
cycle	P	events from which exps? Prim/Second/Both
ra_targ	262.635417	Observer's specified target RA [deg]
dec_targ	-33.844278	Observer's specified target Dec [deg]
ra_nom	262.63021024804	Nominal RA [deg]
dec_nom	-33.856314364114	Nominal Dec [deg]
roll_nom	258.32453616304	Nominal Roll [deg]
revision	2	Processing version of data
ontime	10055.93789506	Sum of GTIs [s]
livetime	9924.5496633869	Livetime [s]
ontime0	10055.81477505	Sum of GTIs [s]
ontime1	10055.855815053	Sum of GTIs [s]
ontime2	10055.896855056	Sum of GTIs [s]
ontime3	10055.93789506	Sum of GTIs [s]
l2events	31059	Number of level 2 events



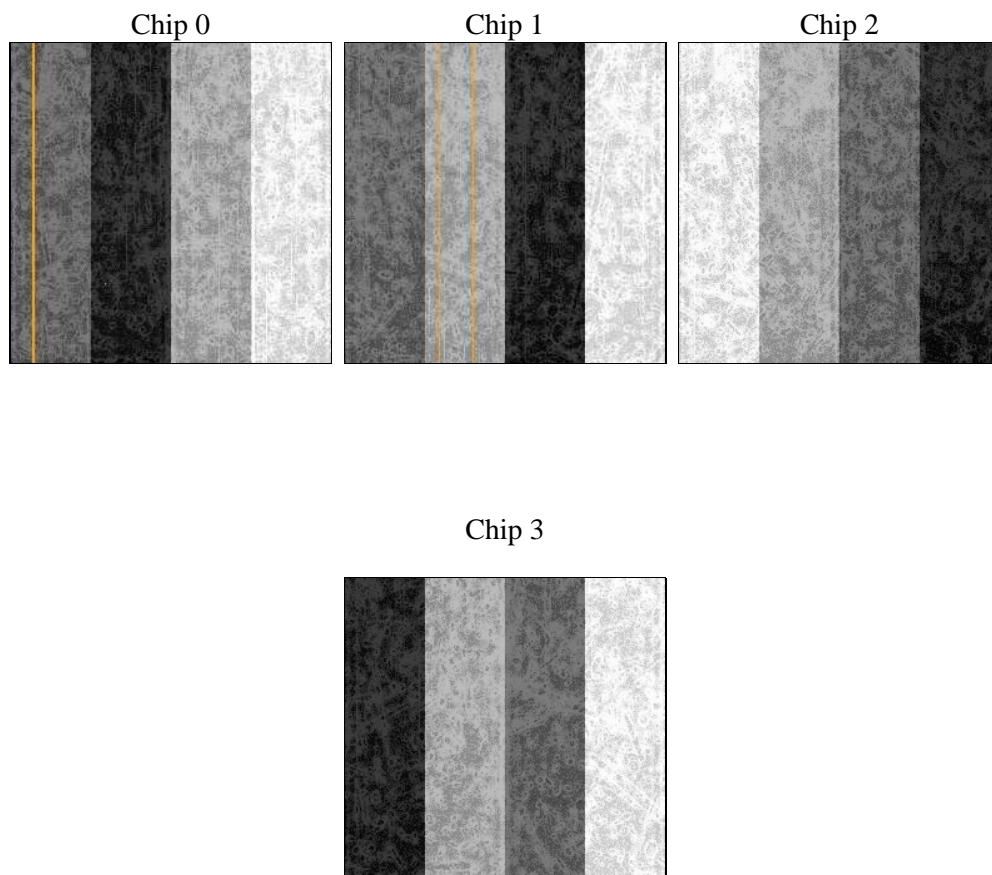
2 OBI

2.1 OBI

2.1.1 Images



2.1.2 Bias



2.1.3 Parameters

obi_num	0	Obi number	sched_exp_time	10000.000000	[s] Scheduled observation exposure time
ascdsver	8.4.4	Processing system revision	ontime	10055.93789506	Sum of GTIs [s]
caldsver	4.4.9	 	ontime0	10055.81477505	Sum of GTIs [s]
date	2012-05-25T04:25:16	Date and time of file creation	ontime1	10055.855815053	Sum of GTIs [s]
revision	2	Processing version of data	ontime2	10055.896855056	Sum of GTIs [s]
			ontime3	10055.93789506	Sum of GTIs [s]
			l1events	313467	Number of level 1 events

2.1.4 Events

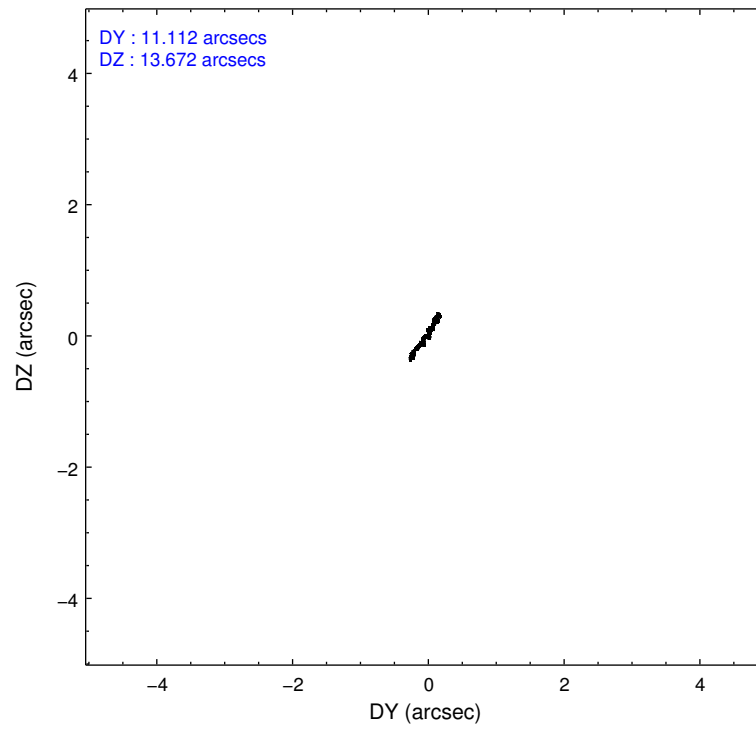
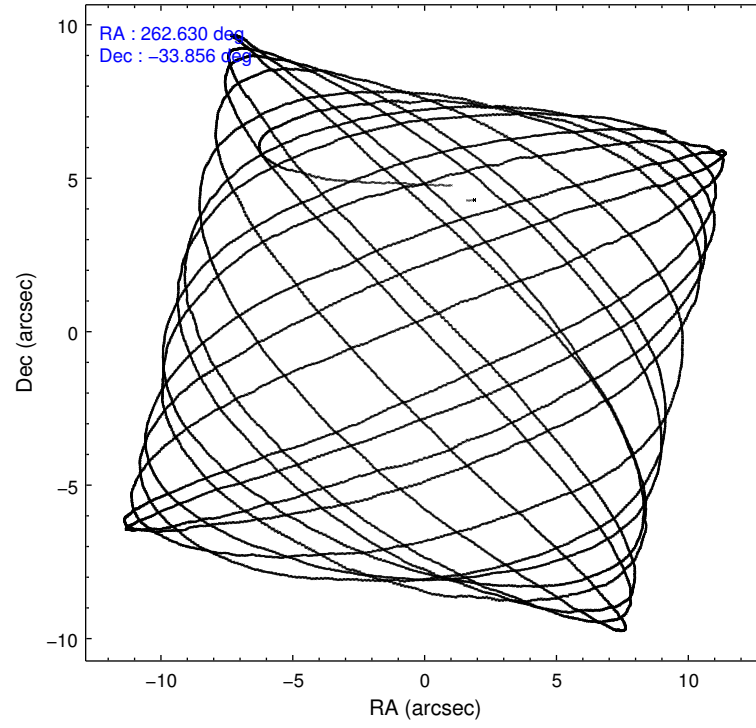
	ccd 0	ccd 1	ccd 2	ccd 3
level 1 events	73801	71387	85732	82547
rejected events	64996	62157	76146	72758
rejected %	88%	87%	88%	88%

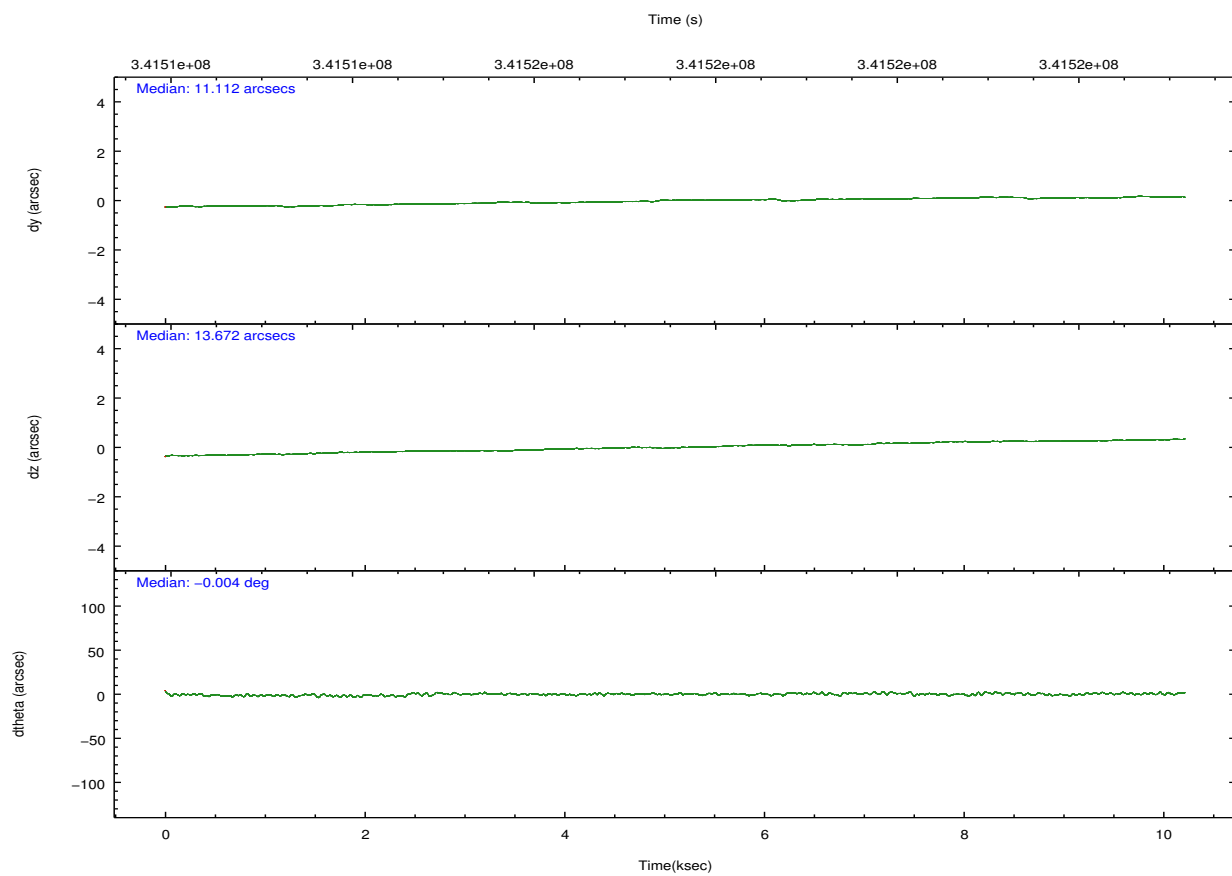
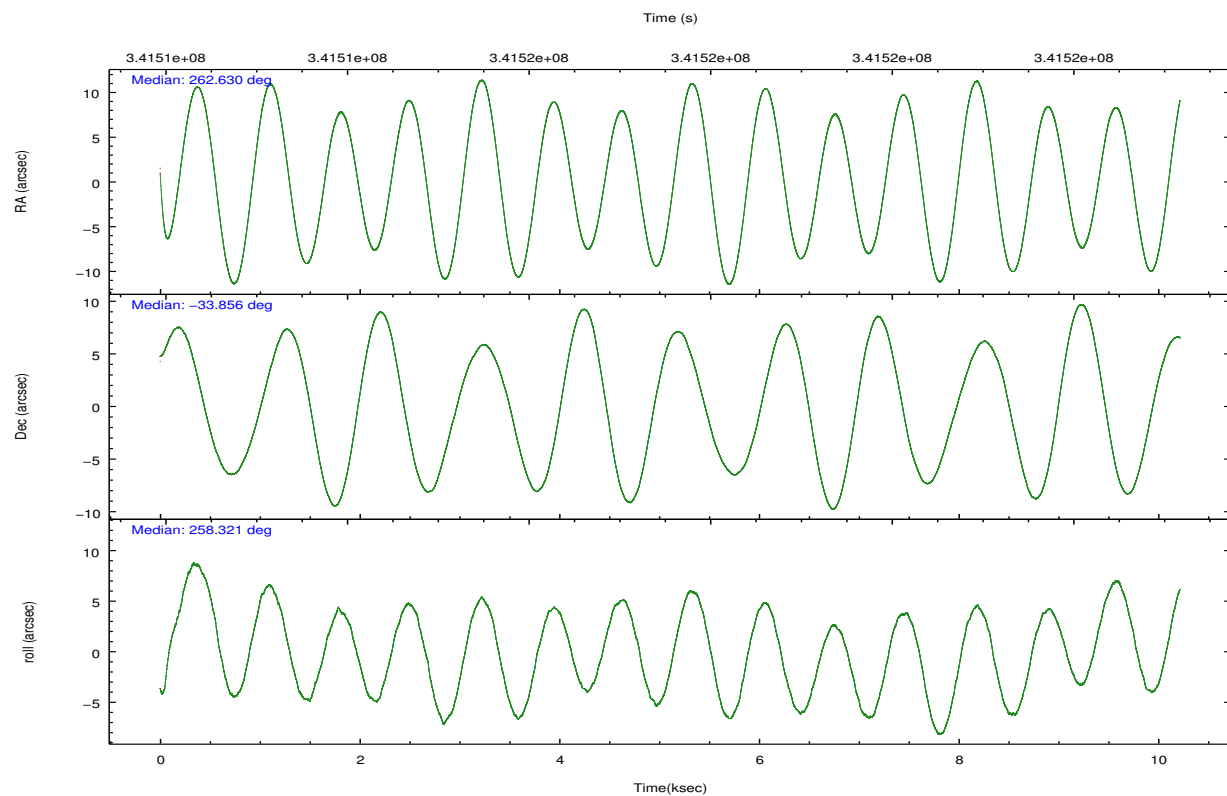
	ccd 0	ccd 1	ccd 2	ccd 3
grade 0 events	3585	3631	4300	4496
	4%	5%	5%	5%
grade 1 events	41	47	45	56
	0%	0%	0%	0%
grade 2 events	1984	1932	2031	1923
	2%	2%	2%	2%
grade 3 events	901	1040	884	917
	1%	1%	1%	1%
grade 4 events	875	940	870	896
	1%	1%	1%	1%
grade 5 events	2302	2659	2148	2761
	3%	3%	2%	3%
grade 6 events	1465	1698	1504	1559
	1%	2%	1%	1%
grade 7 events	62648	59440	73950	69939
	84%	83%	86%	84%

2.2 Compared Parameters

Parameter	Planned	Actual	Parameter	Planned	Actual
Instrument	ACIS	ACIS	Obspar format version number	7	7
Detector	ACIS-0123	ACIS-0123	Obspar file type	PREDICTED	ACTUAL
Grating	NONE	NONE	Obspar update status	NONE	UPDATED
Data mode	VFAINT	VFAINT	Number of optional ACIS chips dropped	0	0
Observation mode	POINTING	POINTING	On-chip summing requested	N	N
[deg] Pointing RA	262.619694	262.6302102480376	Subarray requested	NONE	NONE
[deg] Pointing Dec	-33.830286	-33.85631436411374	Alternating exposures requested	N	N
[deg] Pointing Roll	258.110001	258.3245361630434	[s] Primary exposure time	0.000000	3.1
[mm] SIM focus pos	-0.782348	-0.7809083437167272			
[mm] SIM defocus	0	0.001439871863259334			
[mm] SIM translation stage pos	-232.122463	-232.1215886400192			
[mm] SIM translation stage offset	-1.47	-1.470864362910476			
[s] Observation start time (MET)	341512660.184000	341511776.70647			
Observation start date	2008-10-27T16:36:35	2008-10-27T16:22:56			
[s] Observation end time (MET)	341522660.184000	341522969.70702			
Observation end date	2008-10-27T19:23:15	2008-10-27T19:29:29			
Read mode	TIMED	TIMED			

2.3 Aspect



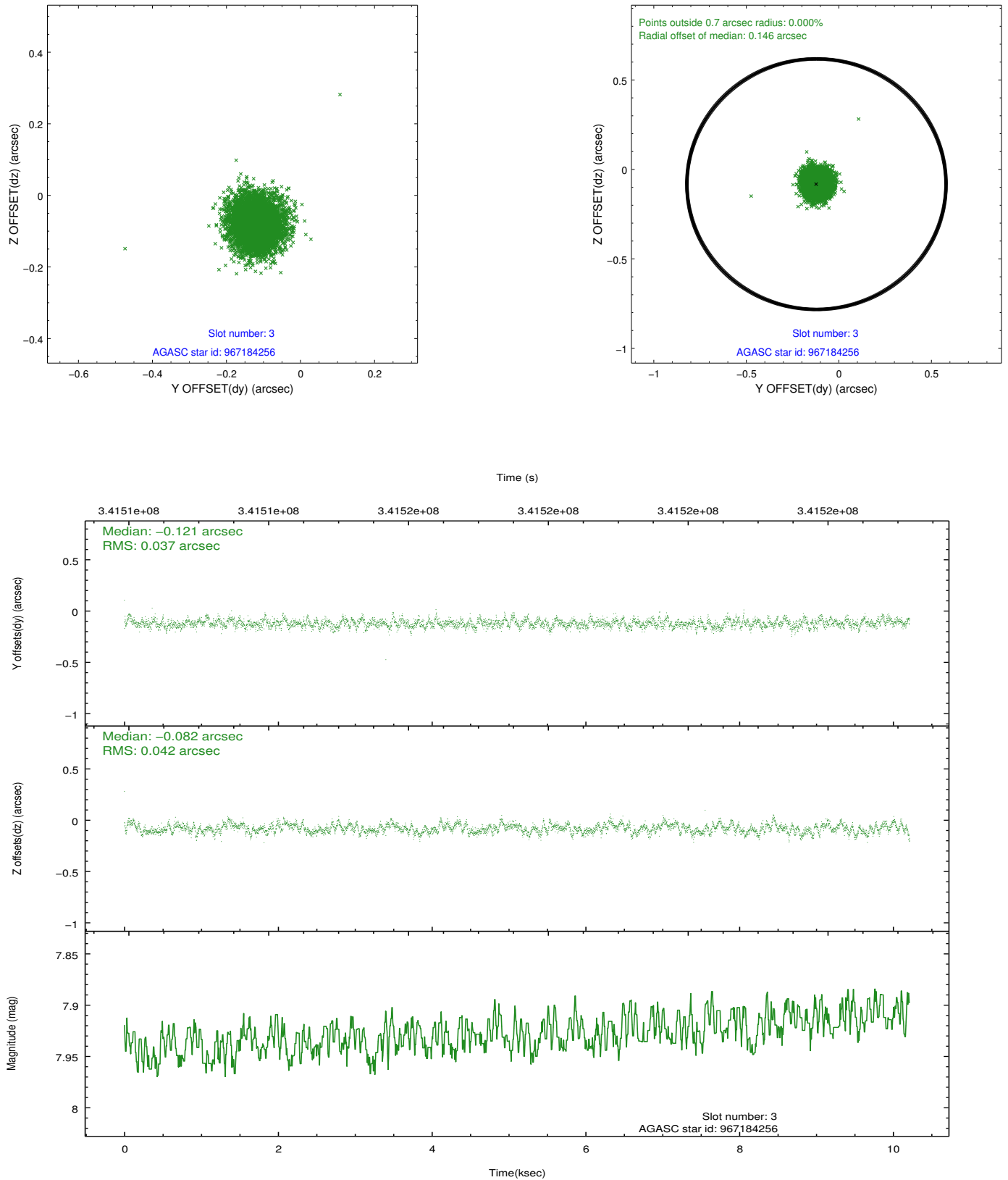


Slot Statistics

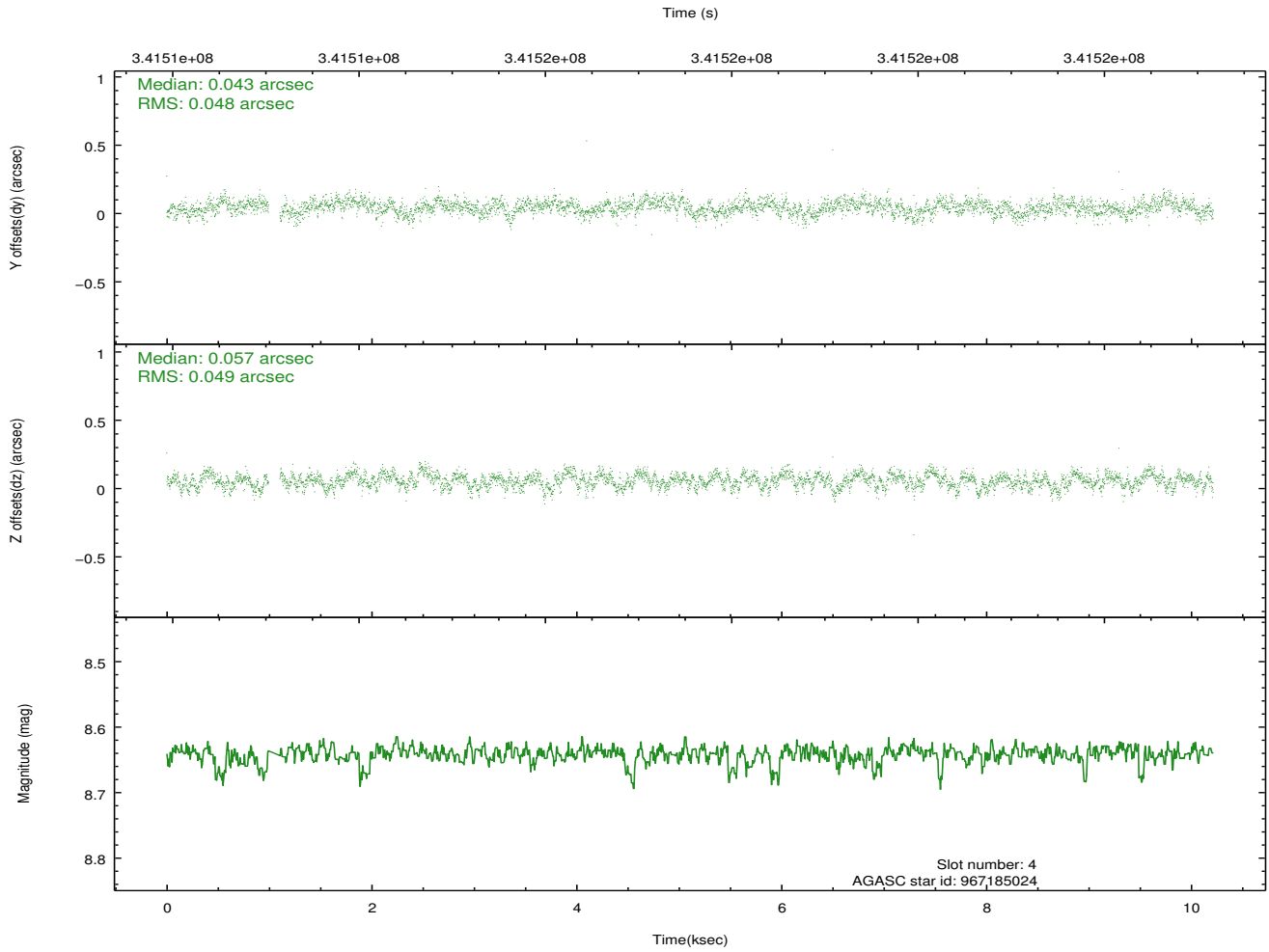
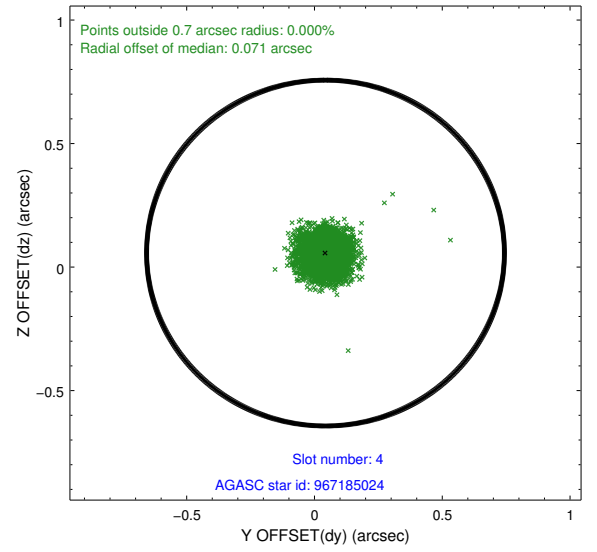
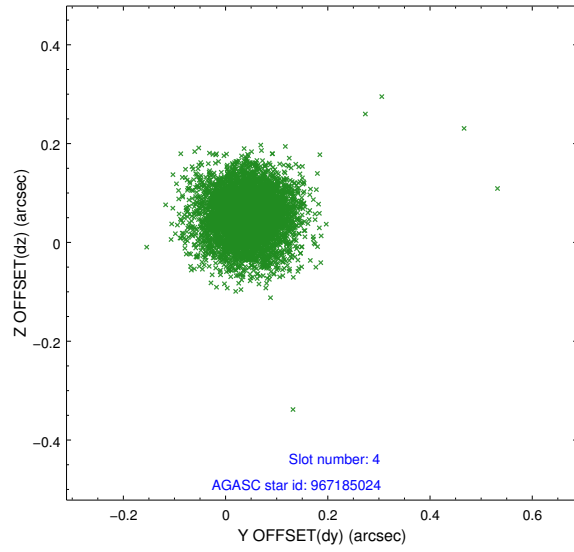
slot	status	id	mag	n_pts	med_dy	med_dz	dr1	dr2	ra	dec	mean_y	mean_z
0	FID	ACIS-I-1	7.02	2492	-0.052	0.059	0.011	0.019	0.000000	0.000000	928.44	-867.26
1	FID	ACIS-I-2	6.95	2492	-0.124	-0.068	0.008	0.014	0.000000	0.000000	-765.51	-873.96
2	FID	ACIS-I-4	6.95	2491	0.079	0.076	0.008	0.016	0.000000	0.000000	2148.07	1032.51
3	GUIDE	967184256	7.93	4982	-0.121	-0.082	0.059	0.095	262.701584	-33.609898	-826.50	76.87
4	GUIDE	967185024	8.64	4919	0.043	0.057	0.072	0.116	262.820462	-33.346243	-1828.68	232.16
5	GUIDE	967705480	8.57	4981	0.061	0.040	0.080	0.126	262.356652	-33.760572	-81.62	-821.21
6	GUIDE	967706296	8.30	4981	0.140	-0.061	0.054	0.087	262.582774	-34.480498	2313.73	375.21
7	GUIDE	967708640	7.16	4983	-0.124	0.046	0.054	0.086	263.157598	-33.796198	-446.89	1550.66

2.4 Star Slots

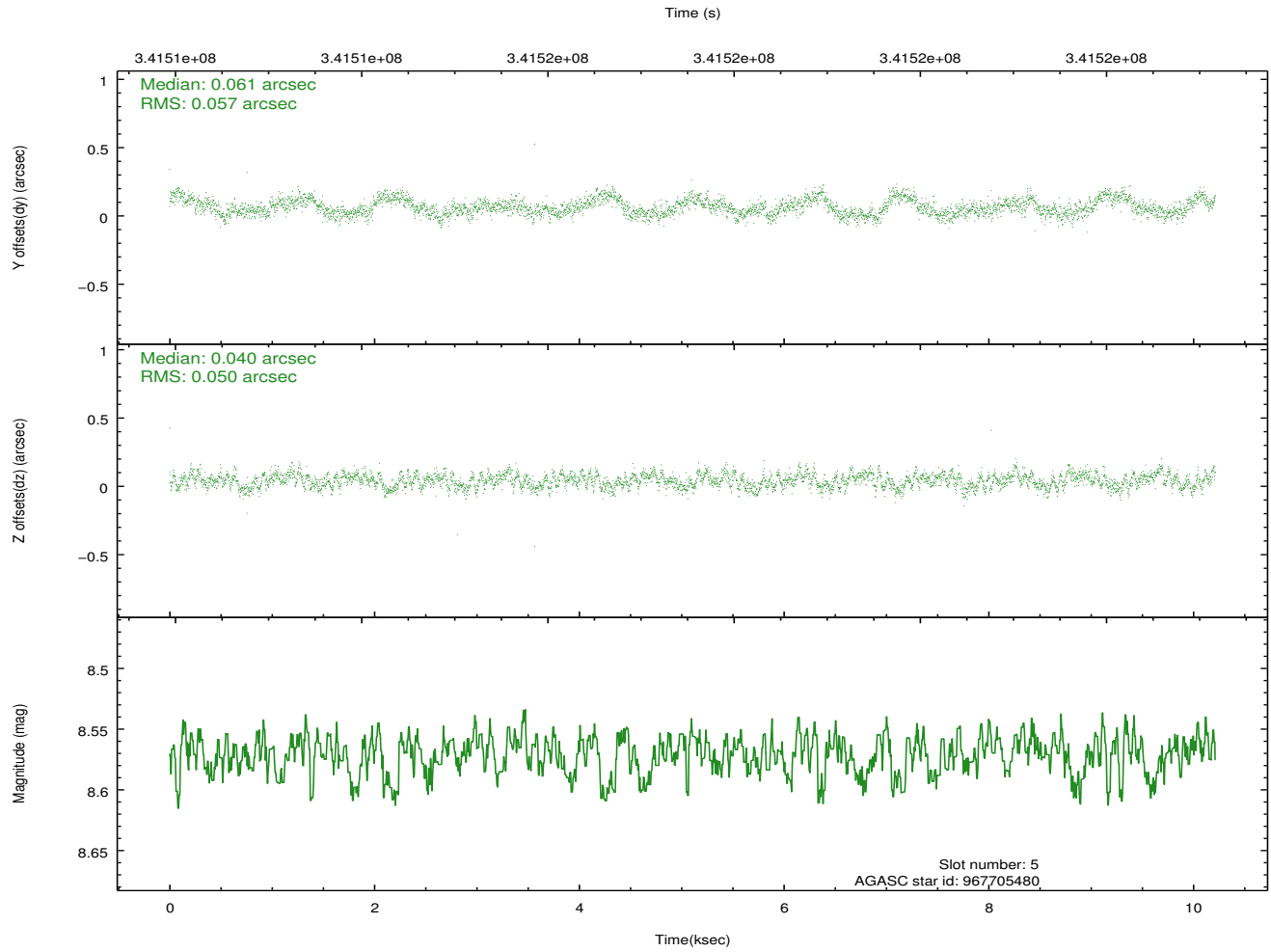
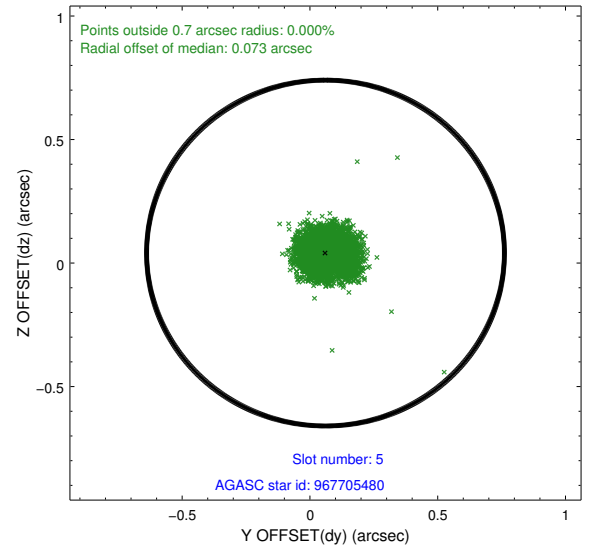
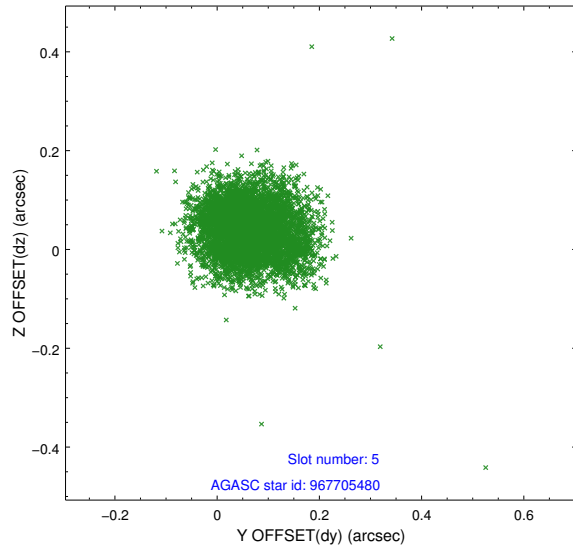
2.4.1 Slot 3



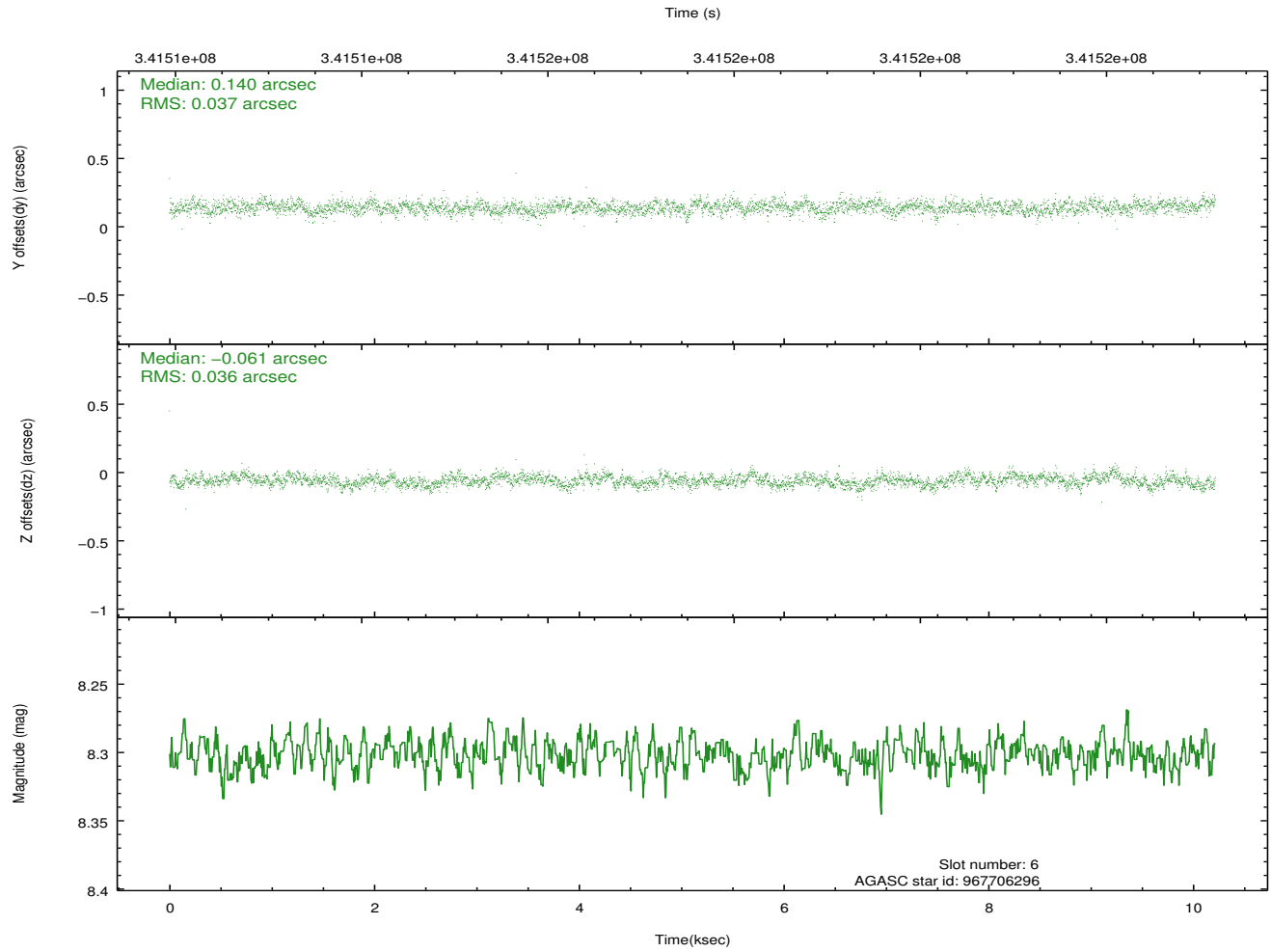
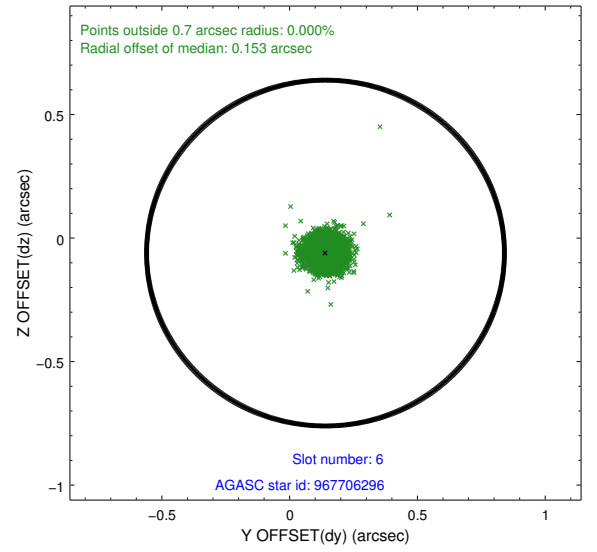
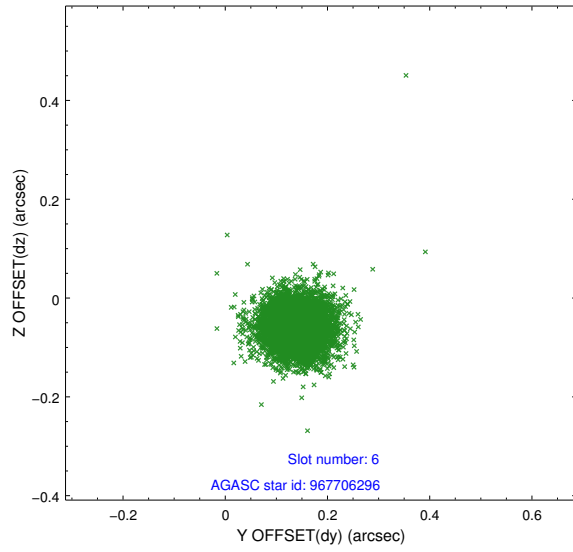
2.4.2 Slot 4



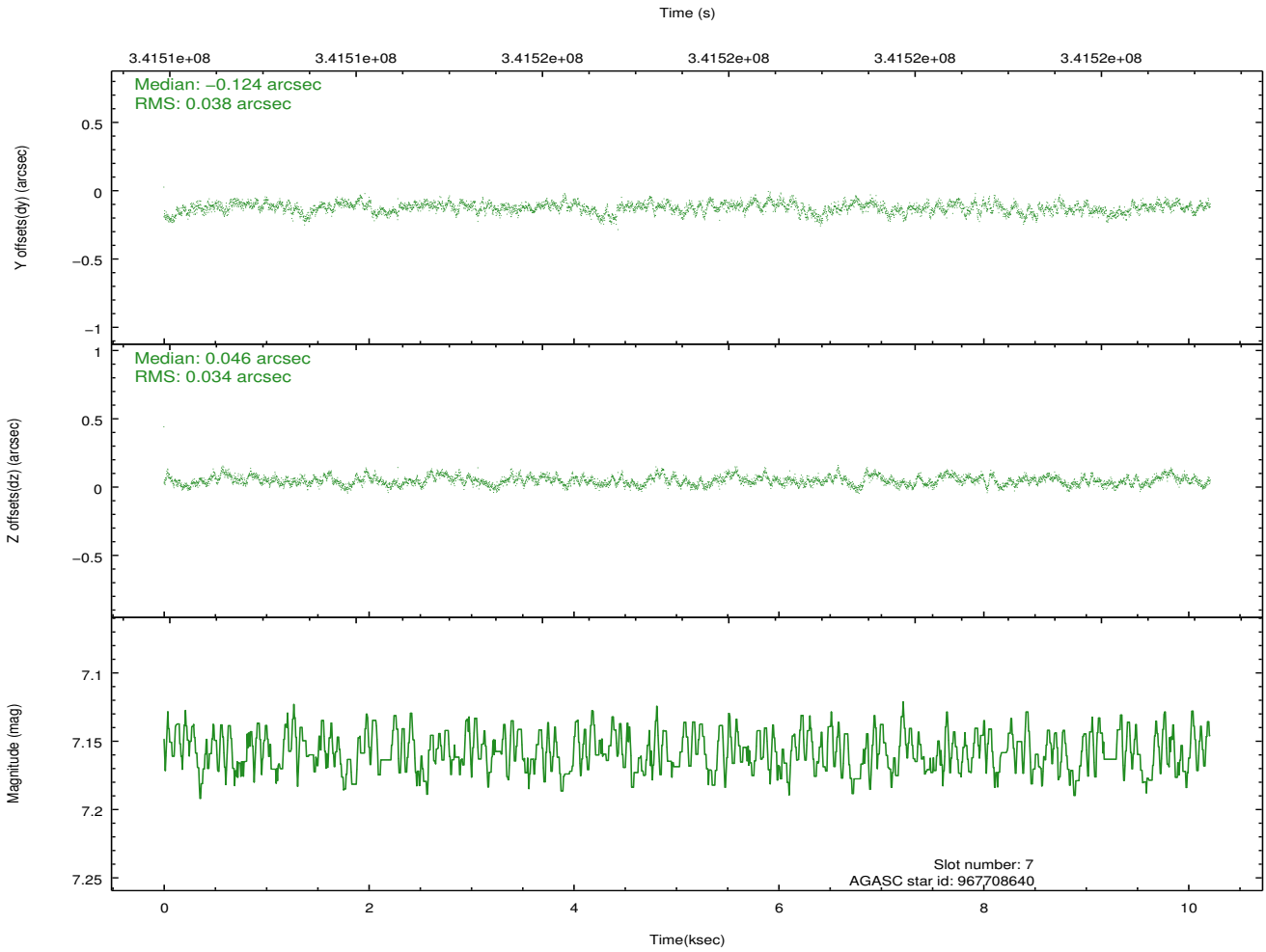
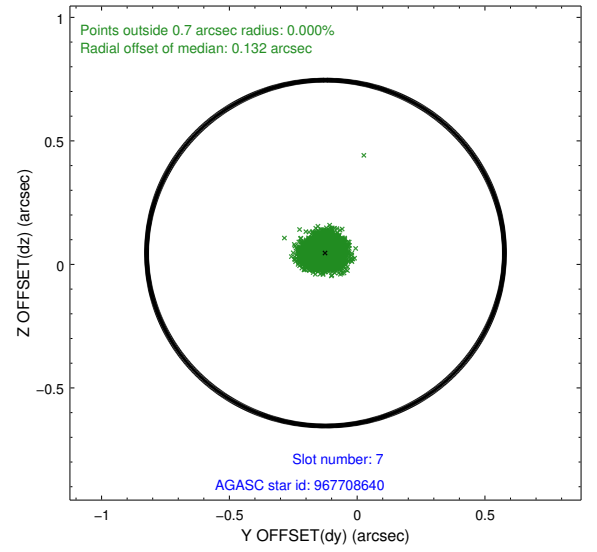
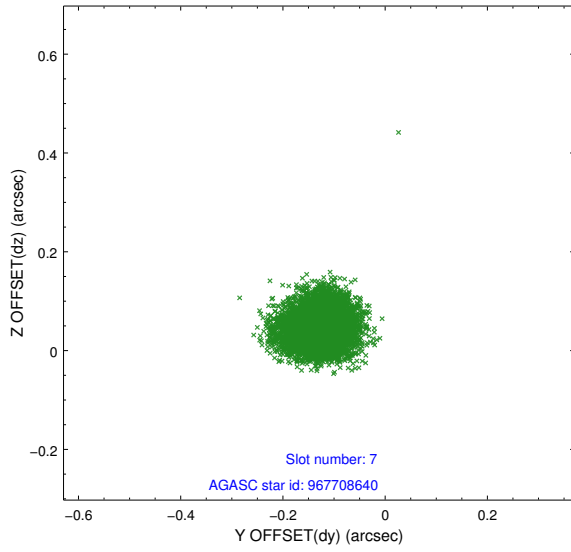
2.4.3 Slot 5



2.4.4 Slot 6

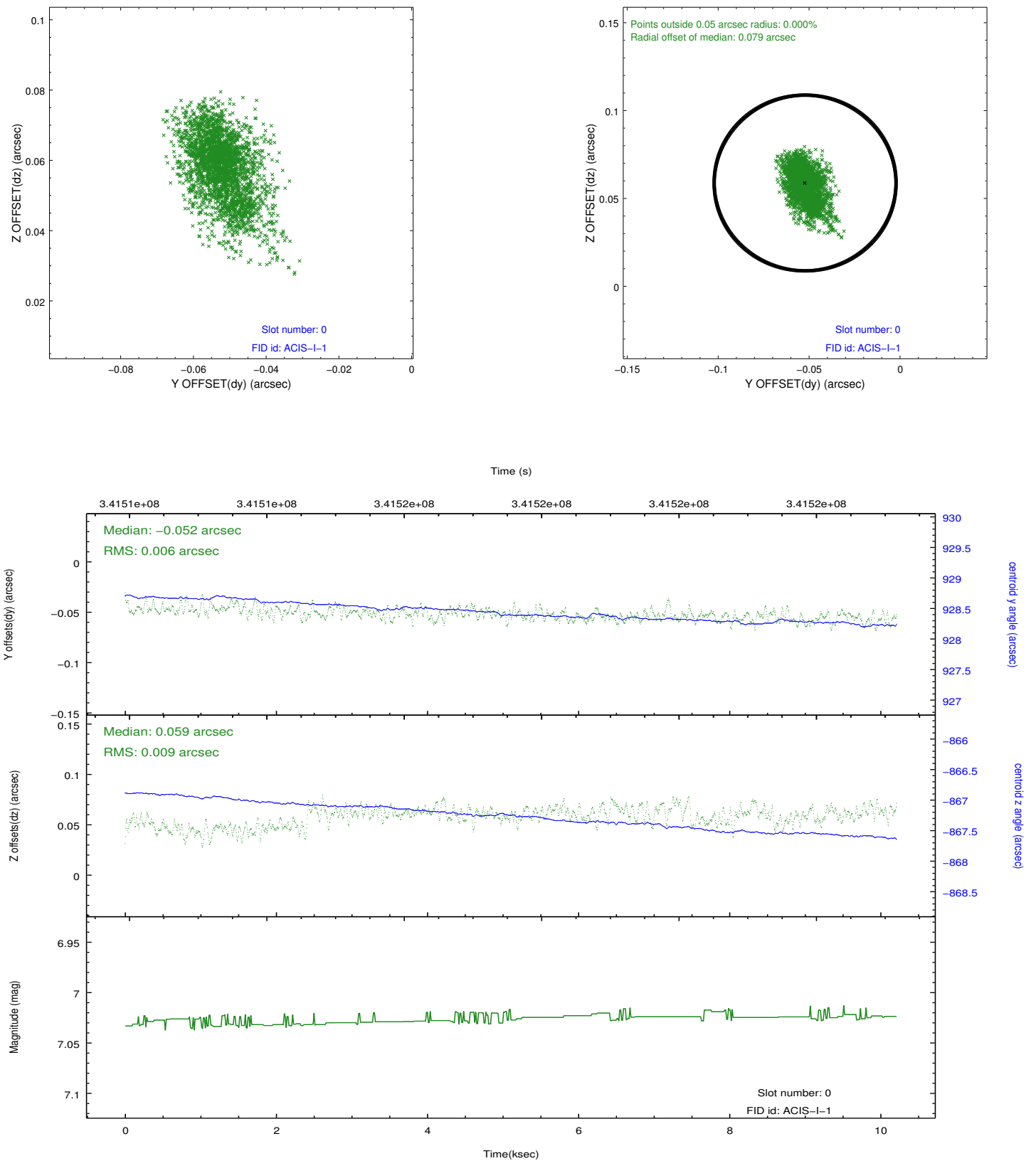


2.4.5 Slot 7

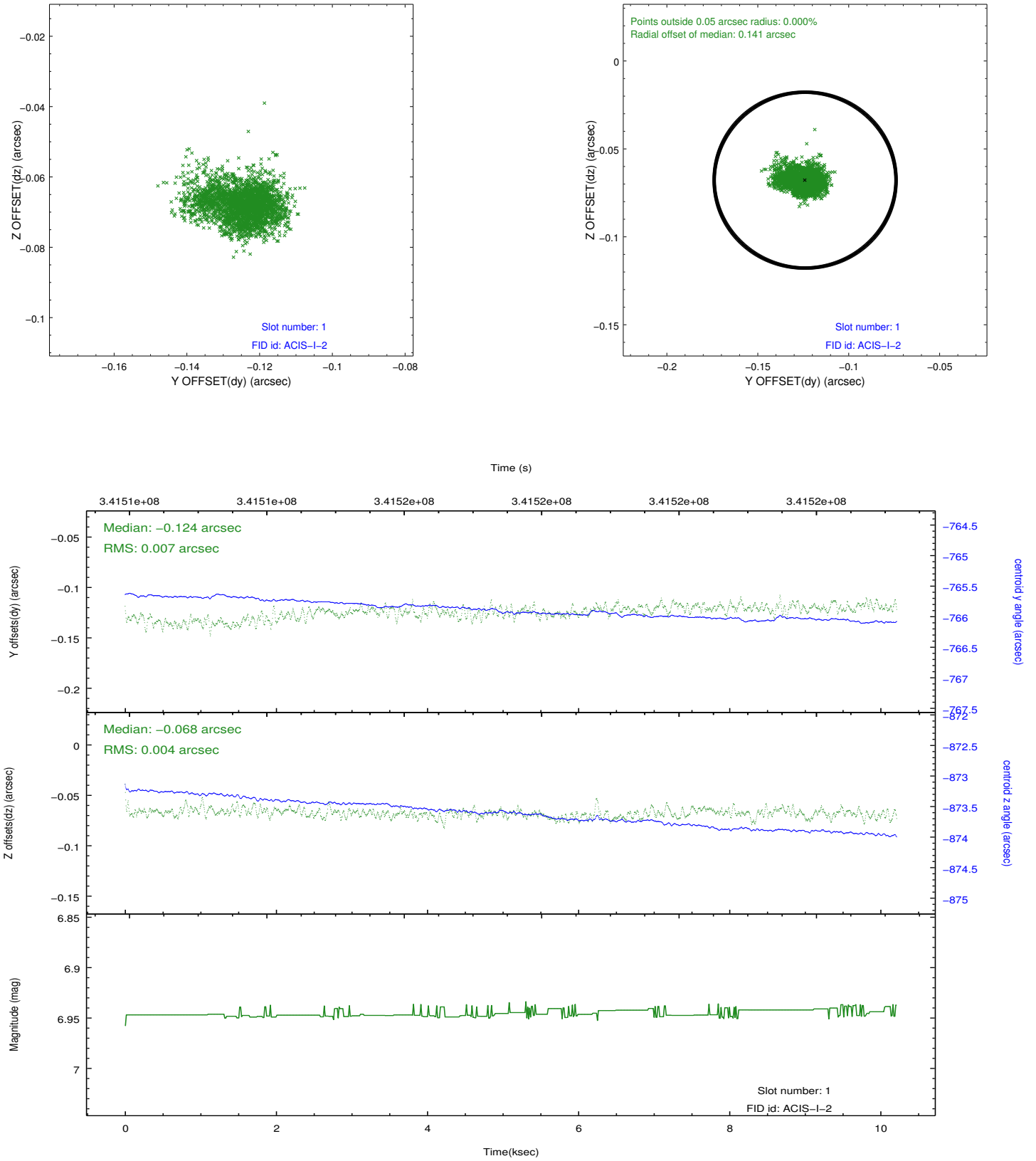


2.5 FID Slots

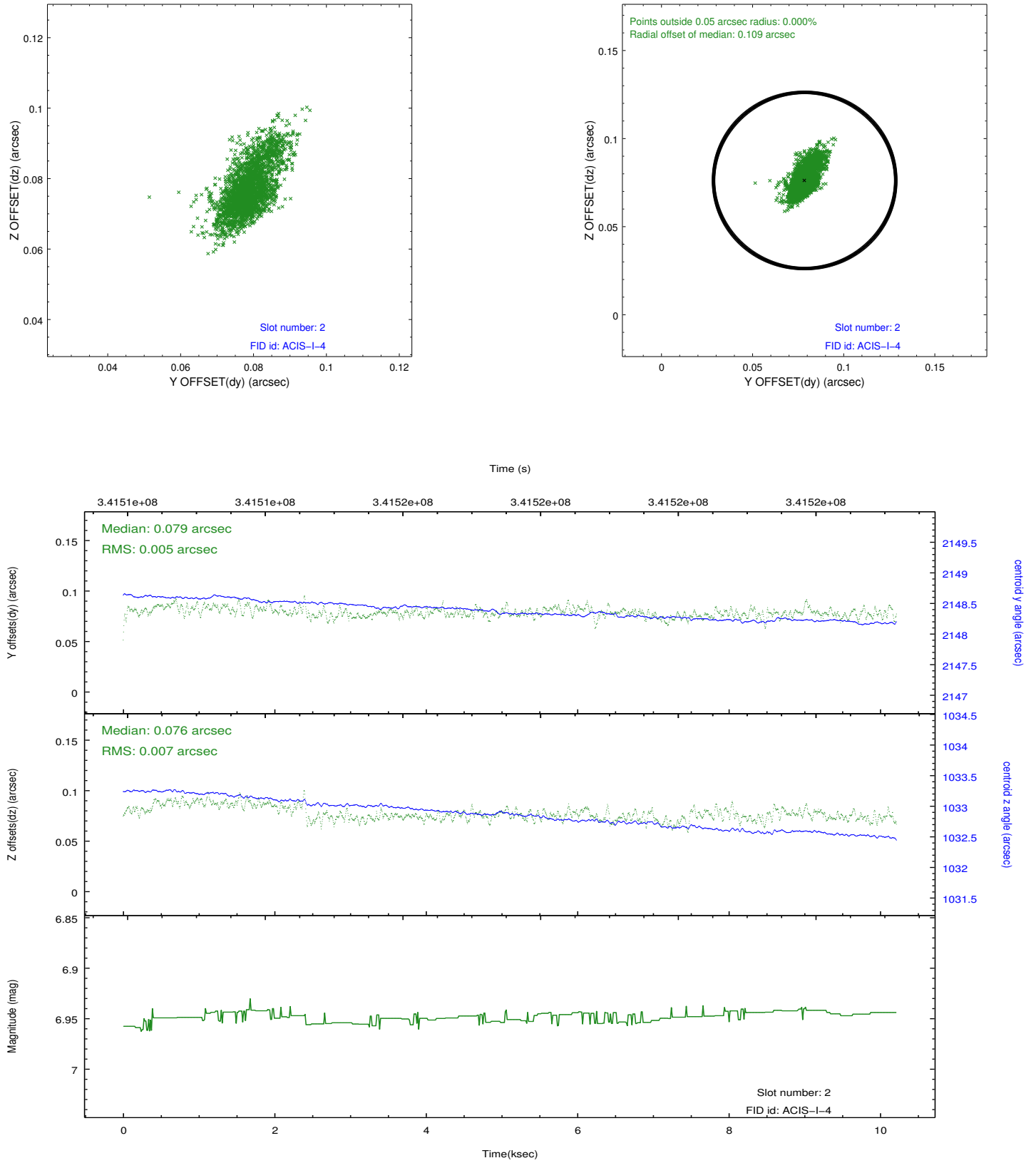
2.5.1 Slot 0



2.5.2 Slot 1



2.5.3 Slot 2



A Summary

A.1 Status

V&V Scientist	Joy Nichols
V&V Date (YYYY-MM-DD)	2012.06.01
V&V Edition	1
V&V Disposition and Status	OK
V&V Charge Time	10.0564

A.2 Comments