

# V&V Reference Report

## L2 ASCDS Version : 8.4.4

Observation 9077 - L2 Version 2  
Chandra X-Ray Center

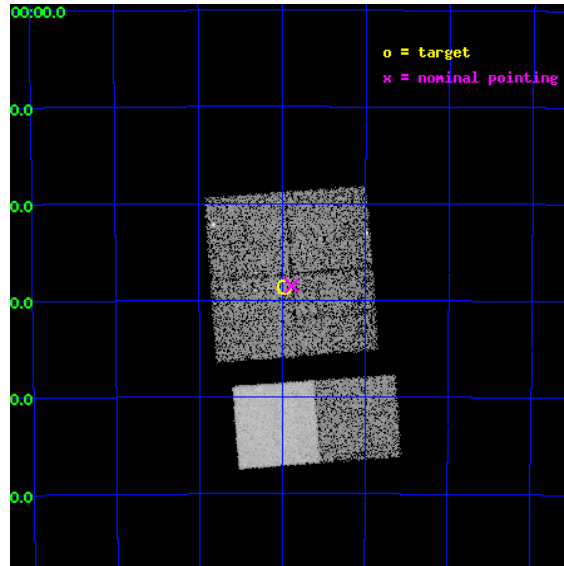
L2 Processing Date : May 20 2012

## Contents

<b>1</b>	<b>Front</b>	<b>2</b>
<b>2</b>	<b>OBI</b>	<b>3</b>
2.1	OBI . . . . .	3
2.1.1	Images . . . . .	3
2.1.2	Bias . . . . .	3
2.1.3	Parameters . . . . .	4
2.1.4	Events . . . . .	4
2.2	Compared Parameters . . . . .	5
2.3	Aspect . . . . .	6
2.4	Star Slots . . . . .	9
2.4.1	Slot 3 . . . . .	9
2.4.2	Slot 4 . . . . .	10
2.4.3	Slot 5 . . . . .	11
2.4.4	Slot 6 . . . . .	12
2.4.5	Slot 7 . . . . .	13
2.5	FID Slots . . . . .	14
2.5.1	Slot 0 . . . . .	14
2.5.2	Slot 1 . . . . .	15
2.5.3	Slot 2 . . . . .	16
<b>A</b>	<b>Summary</b>	<b>17</b>
A.1	Status . . . . .	17
A.2	Comments . . . . .	17

# 1 Front

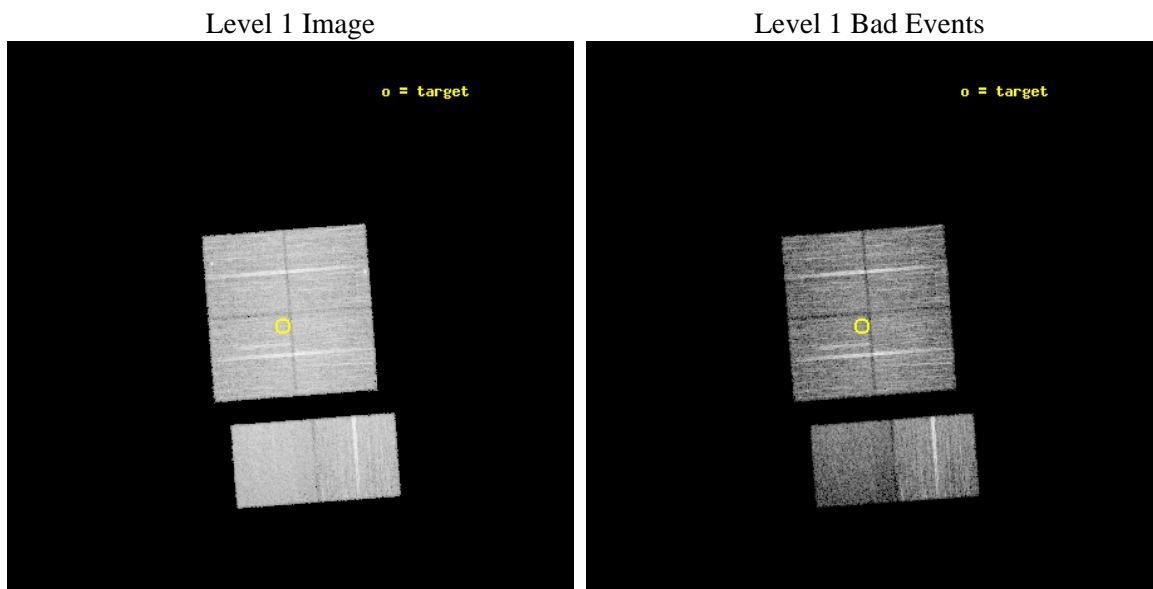
seq_num	500940	Sequence number
obs_id	9077	Observation id
title	Snap-shot survey of potential GeV and TeV pulsars	Proposal title
observer	Professor Gordon Garmire	Principal investigator
object	J0940-5428	Source name
dtcycle	0	&#160
cycle	P	events from which exps? Prim/Second/Both
ra_targ	145.2425	Observer's specified target RA [deg]
dec_targ	-54.477944	Observer's specified target Dec [deg]
ra_nom	145.22100918497	Nominal RA [deg]
dec_nom	-54.475236489024	Nominal Dec [deg]
roll_nom	175.70253154817	Nominal Roll [deg]
revision	2	Processing version of data
ontime	10171.923330843	Sum of GTIs [s]
livetime	10043.120312831	Livetime [s]
ontime0	10171.800210834	Sum of GTIs [s]
ontime1	10171.841250837	Sum of GTIs [s]
ontime2	10171.88229084	Sum of GTIs [s]
ontime3	10171.923330843	Sum of GTIs [s]
ontime6	10172.00541085	Sum of GTIs [s]
ontime7	10171.964370847	Sum of GTIs [s]
l2events	66919	Number of level 2 events



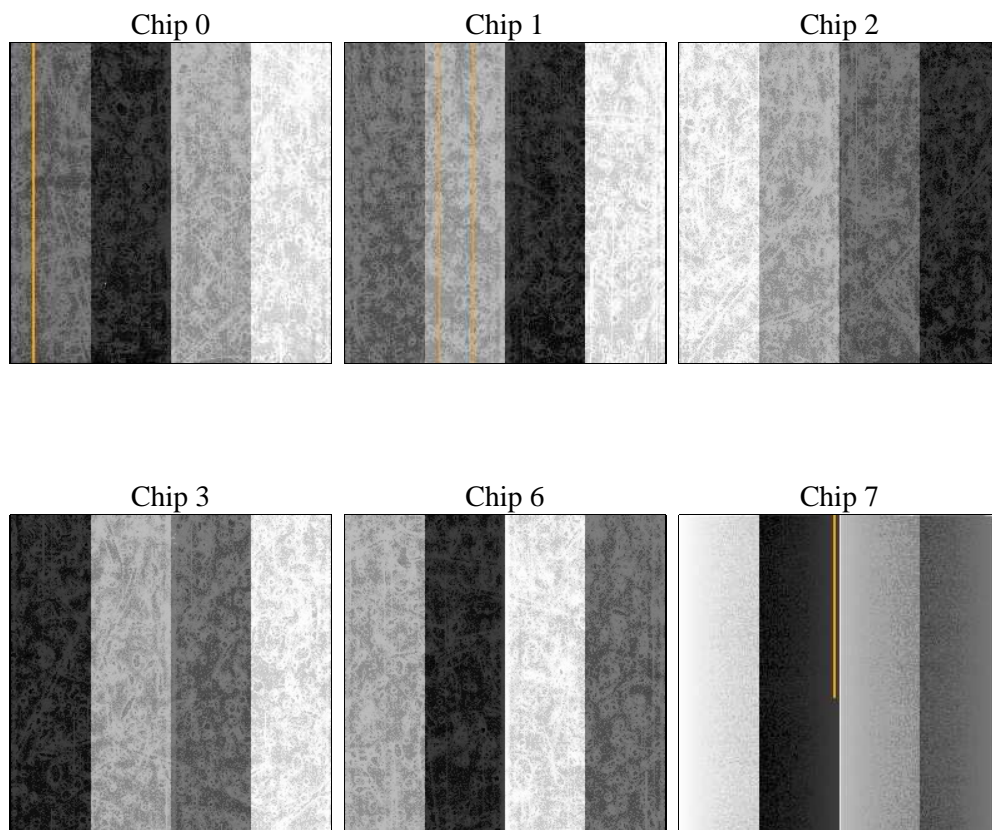
## 2 OBI

### 2.1 OBI

#### 2.1.1 Images



#### 2.1.2 Bias



### 2.1.3 Parameters

obi_num	0	Obi number	sched_exp_time	10000.000000	[s] Scheduled observation exposure time
ascdsver	8.4.4	Processing system revision	ontime	10171.923330843	Sum of GTIs [s]
caldsver	4.4.9	&#160	ontime0	10171.800210834	Sum of GTIs [s]
date	2012-05-20T08:48:25	Date and time of file creation	ontime1	10171.841250837	Sum of GTIs [s]
revision	2	Processing version of data	ontime2	10171.88229084	Sum of GTIs [s]
			ontime3	10171.923330843	Sum of GTIs [s]
			ontime6	10172.00541085	Sum of GTIs [s]
			ontime7	10171.964370847	Sum of GTIs [s]
			l1events	450809	Number of level 1 events

### 2.1.4 Events

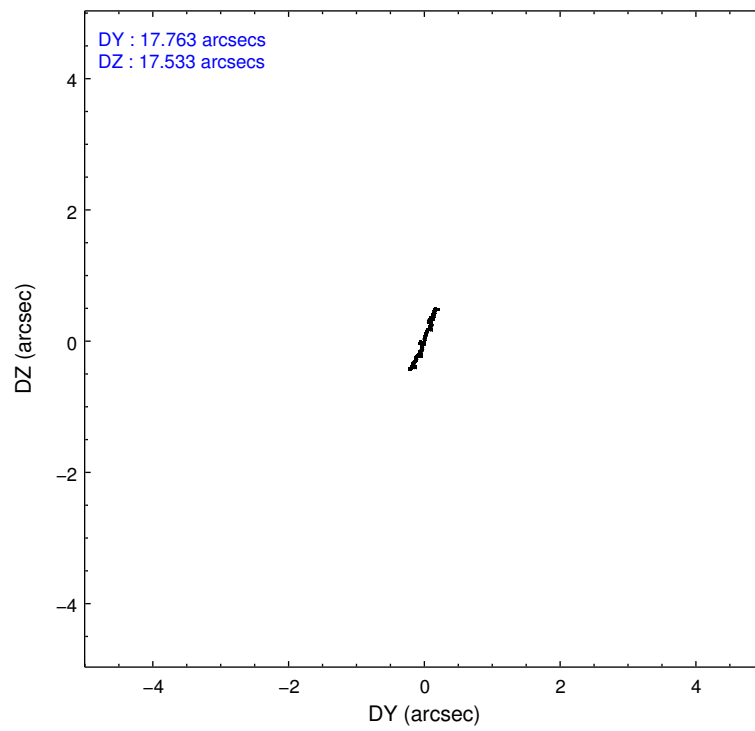
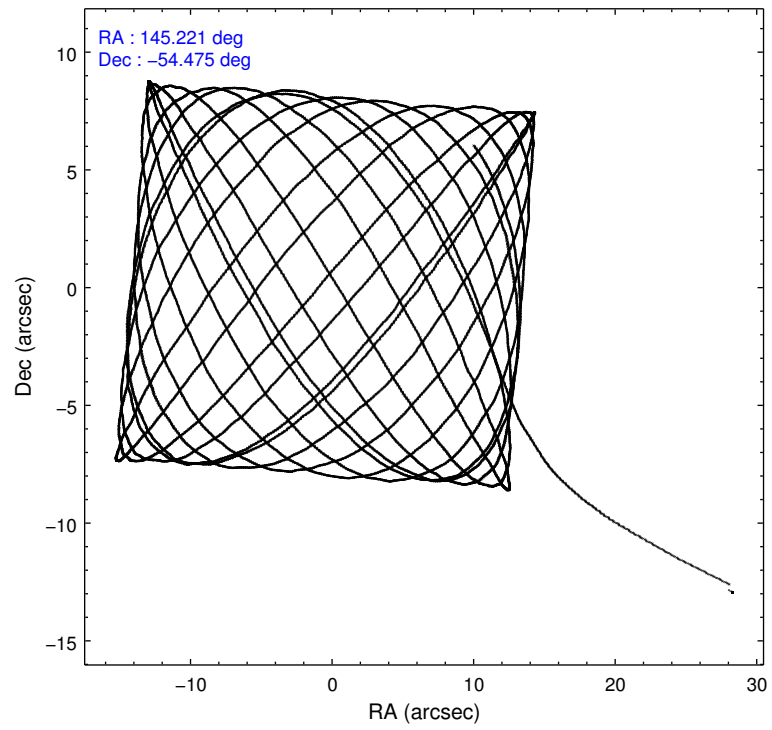
	ccd 0	ccd 1	ccd 2	ccd 3	ccd 6	ccd 7		ccd 0	ccd 1	ccd 2	ccd 3	ccd 6	ccd 7
level 1 events	74801	69406	81715	73330	77580	73977	grade 0 events	3072	2940	2670	2813	2887	3673
rejected events	66711	61266	74433	66115	69576	37817		4%	4%	3%	3%	3%	4%
rejected %	89%	88%	91%	90%	89%	51%	grade 1 events	36	33	53	45	49	120
								0%	0%	0%	0%	0%	0%
							grade 2 events	1943	1792	1736	1548	1804	7690
								2%	2%	2%	2%	2%	10%
							grade 3 events	891	916	763	780	827	3361
								1%	1%	0%	1%	1%	4%
							grade 4 events	807	864	789	776	854	3310
								1%	1%	0%	1%	1%	4%
							grade 5 events	2259	2506	2095	2596	2726	7922
								3%	3%	2%	3%	3%	10%
							grade 6 events	1380	1632	1325	1305	1632	18139
								1%	2%	1%	1%	2%	24%
							grade 7 events	64413	58723	72284	63467	66801	29762
								86%	84%	88%	86%	86%	40%

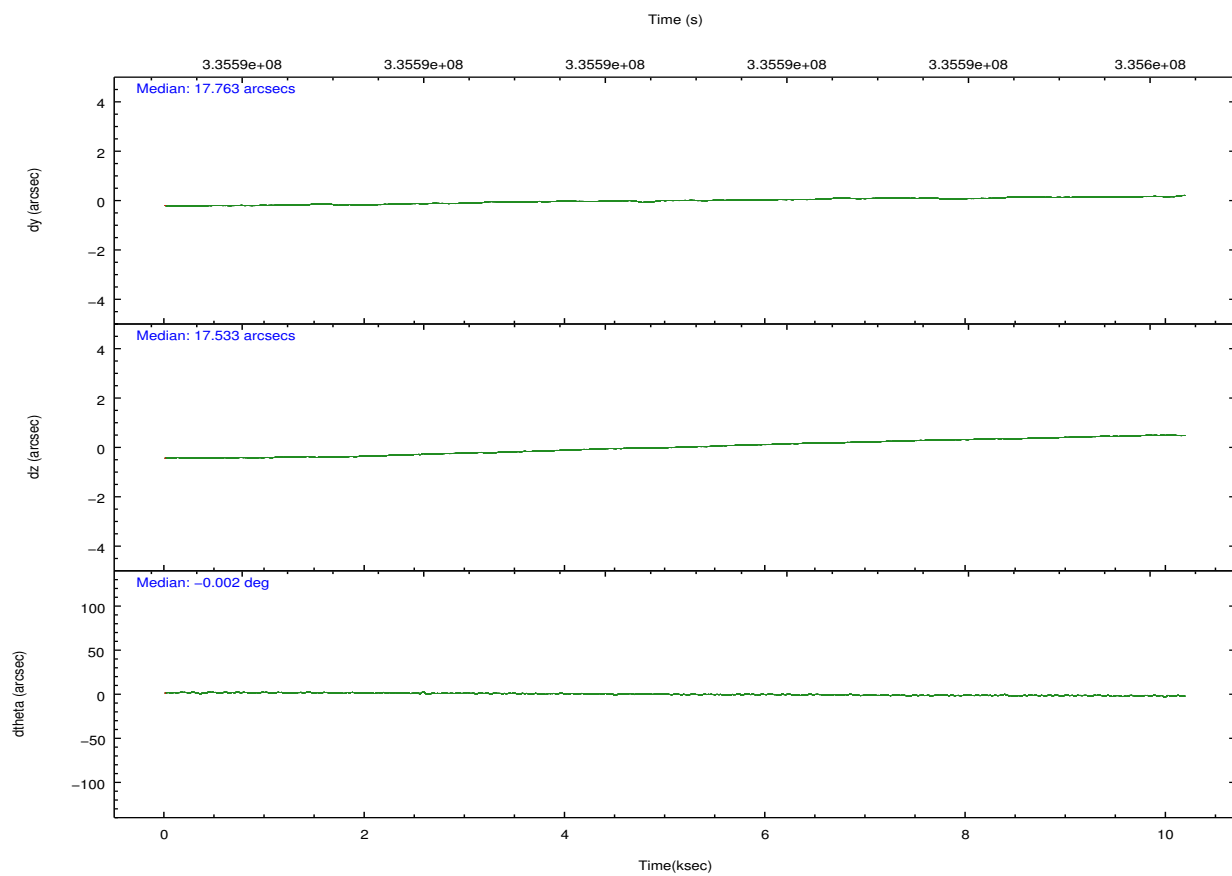
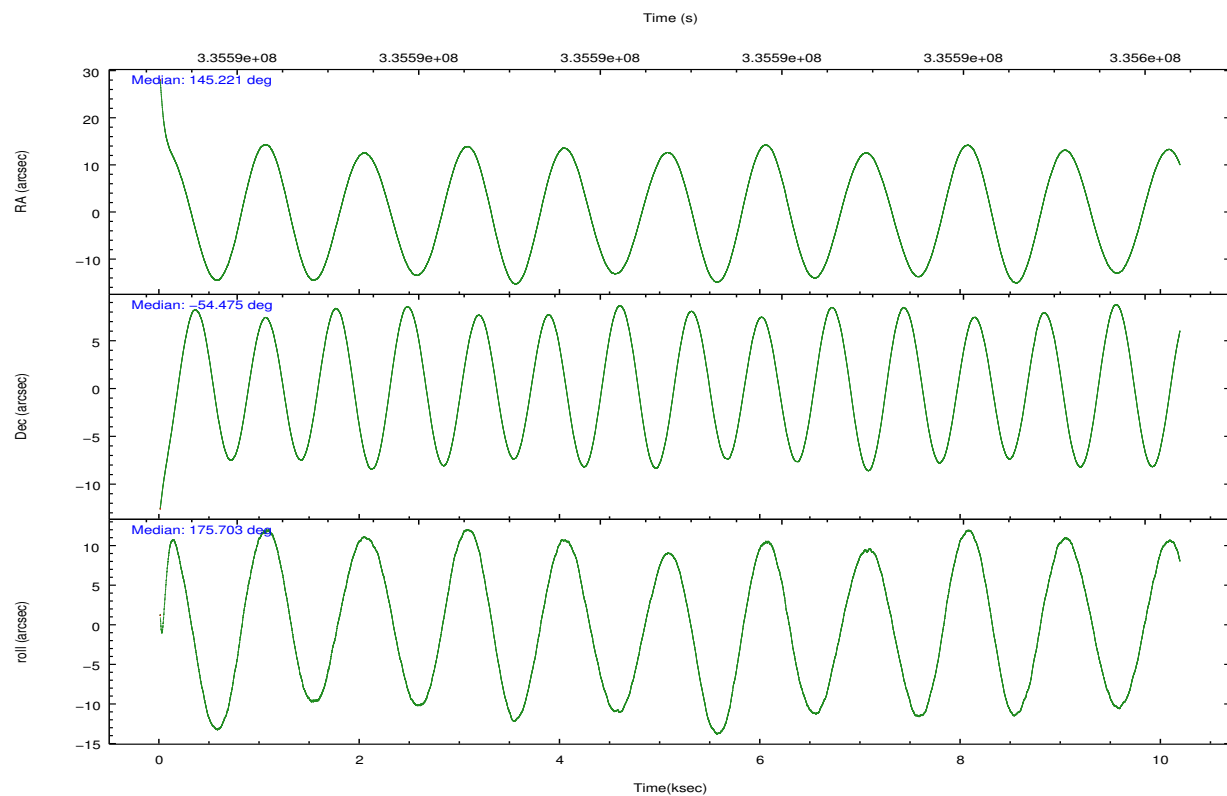


## 2.2 Compared Parameters

Parameter	Planned	Actual	Parameter	Planned	Actual
Instrument	ACIS	ACIS	Obspar format version number	7	7
Detector	ACIS-012367	ACIS-012367	Obspar file type	PREDICTED	ACTUAL
Grating	NONE	NONE	Obspar update status	NONE	UPDATED
Data mode	VFAINT	VFAINT	CCD I0 on	Y	Y
Observation mode	POINTING	POINTING	CCD I1 on	Y	Y
[deg] Pointing RA	145.263479	145.2210091849717	CCD I2 on	Y	Y
[deg] Pointing Dec	-54.463176	-54.47523648902359	CCD I3 on	Y	Y
[deg] Pointing Roll	175.528438	175.7025315481728	CCD S0 on	N	N
[mm] SIM focus pos	-0.782348	-0.7809083437167272	CCD S1 on	N	N
[mm] SIM defocus	0	0.001439871863259334	CCD S2 on	O2	Y
[mm] SIM translation stage pos	-232.122463	-232.1190743247176	CCD S3 on	O1	Y
[mm] SIM translation stage offset	-1.47	-1.473378678212043	CCD S4 on	N	N
[s] Observation start time (MET)	335585860.184000	335584789.25236	CCD S5 on	N	N
Observation start date	2008-08-20T02:16:35	2008-08-20T01:59:49	Number of optional ACIS chips dropped	0	0
[s] Observation end time (MET)	335595860.184000	335596777.14045	On-chip summing requested	N	N
Observation end date	2008-08-20T05:03:15	2008-08-20T05:19:37	Subarray requested	NONE	NONE
Read mode	TIMED	TIMED	Alternating exposures requested	N	N
			[s] Primary exposure time	0.000000	3.2

## 2.3 Aspect



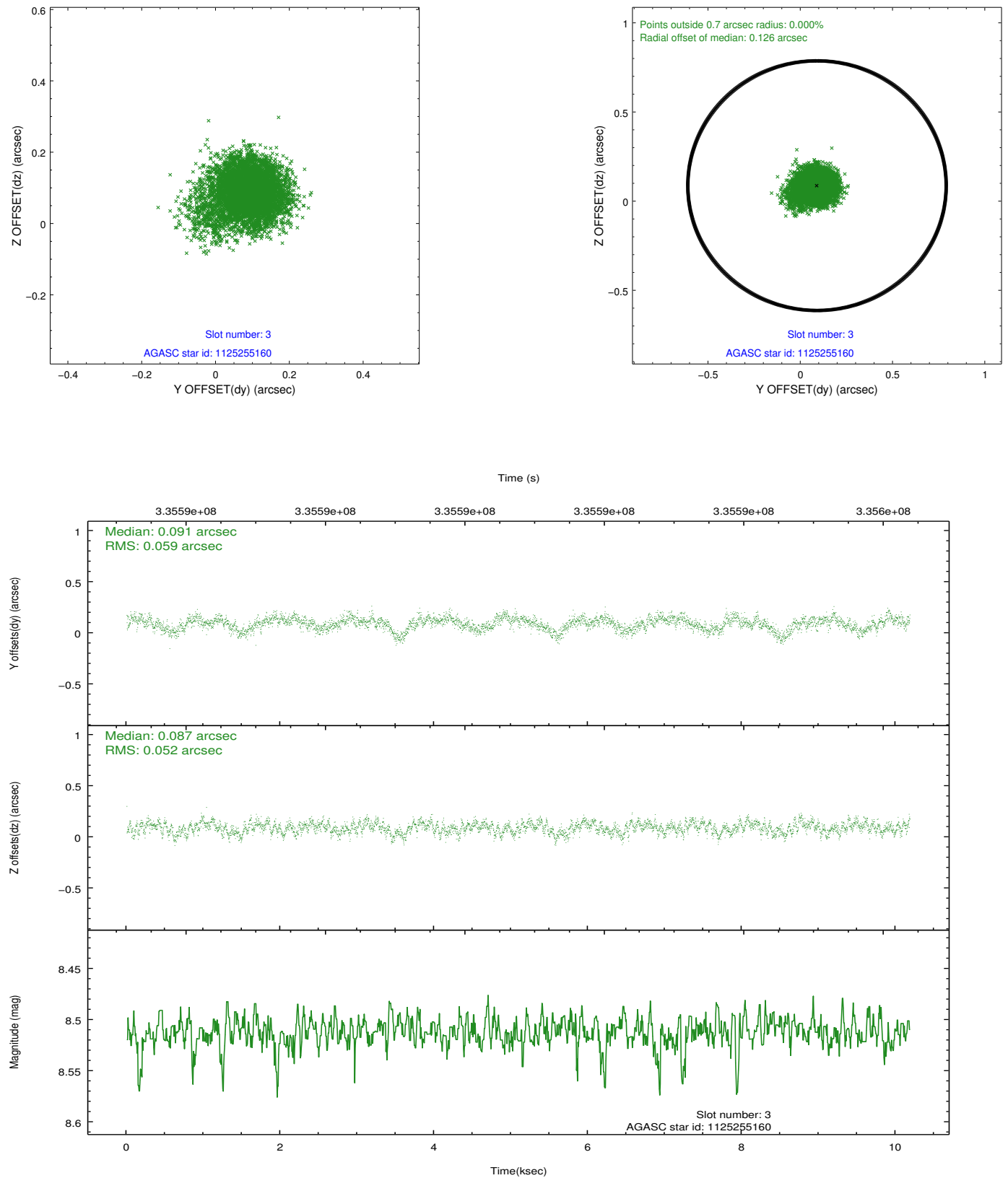


### Slot Statistics

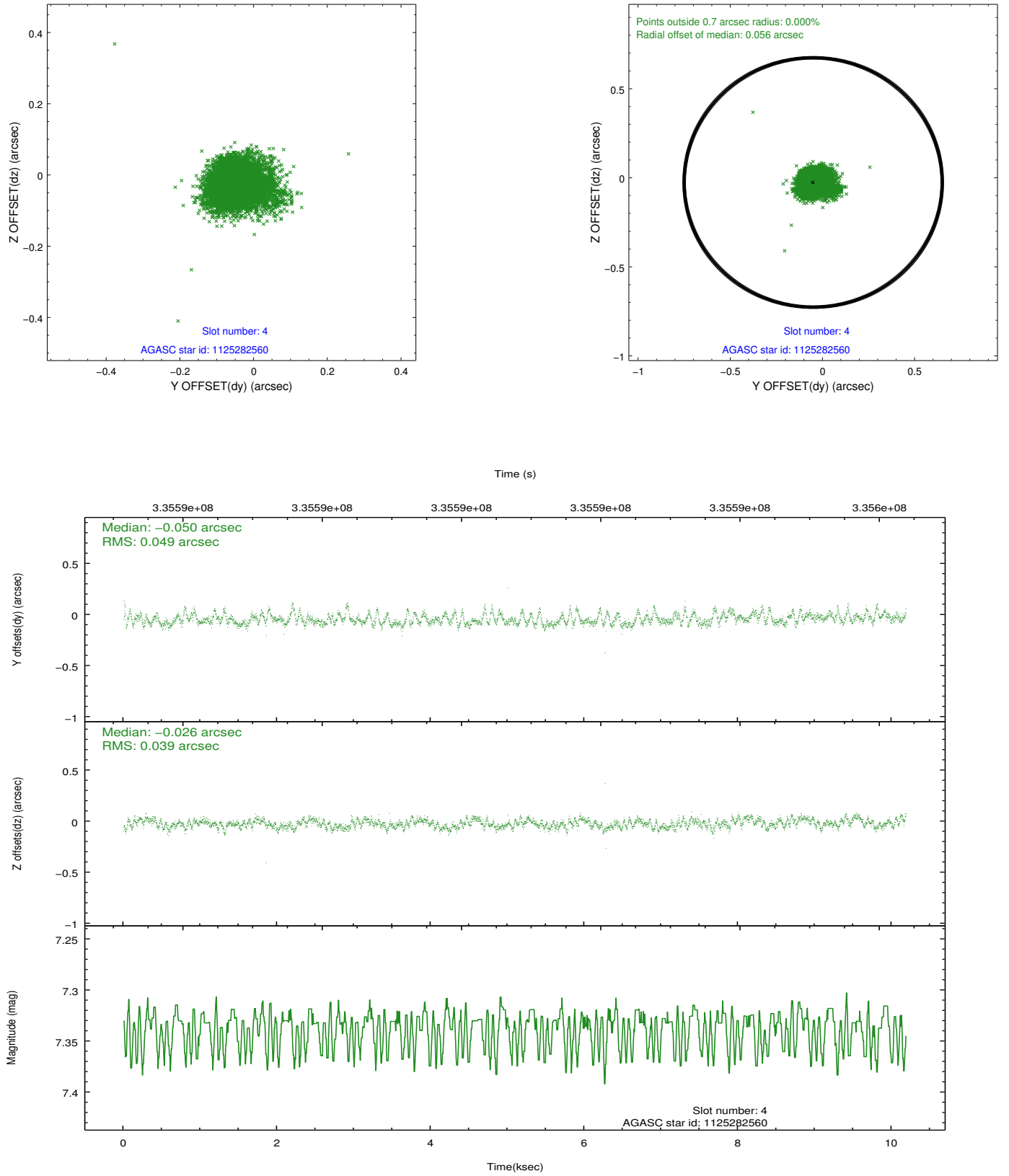
slot	status	id	mag	n_pts	med_dy	med_dz	dr1	dr2	ra	dec	mean_y	mean_z
0	FID	ACIS-I-1	7.04	2484	0.049	0.016	0.019	0.037	0.000000	0.000000	921.65	-871.35
1	FID	ACIS-I-5	7.03	2484	-0.208	0.062	0.011	0.021	0.000000	0.000000	-1826.42	1025.92
2	FID	ACIS-I-6	7.04	2484	0.069	-0.008	0.012	0.020	0.000000	0.000000	386.66	1670.93
3	GUIDE	1125255160	8.51	4964	0.091	0.087	0.082	0.139	144.707821	-54.325137	1201.88	-399.94
4	GUIDE	1125282560	7.34	4967	-0.050	-0.026	0.065	0.107	146.322735	-54.247438	-2161.32	-931.54
5	GUIDE	1125778008	7.33	4968	0.055	-0.056	0.092	0.140	144.860774	-54.753366	752.31	1108.88
6	GUIDE	1125795792	8.22	4967	-0.005	0.070	0.065	0.105	146.202403	-54.447122	-1955.49	-197.50
7	GUIDE	1125790736	8.71	4963	-0.082	-0.071	0.103	0.157	144.506555	-55.021010	1399.95	2132.19

## 2.4 Star Slots

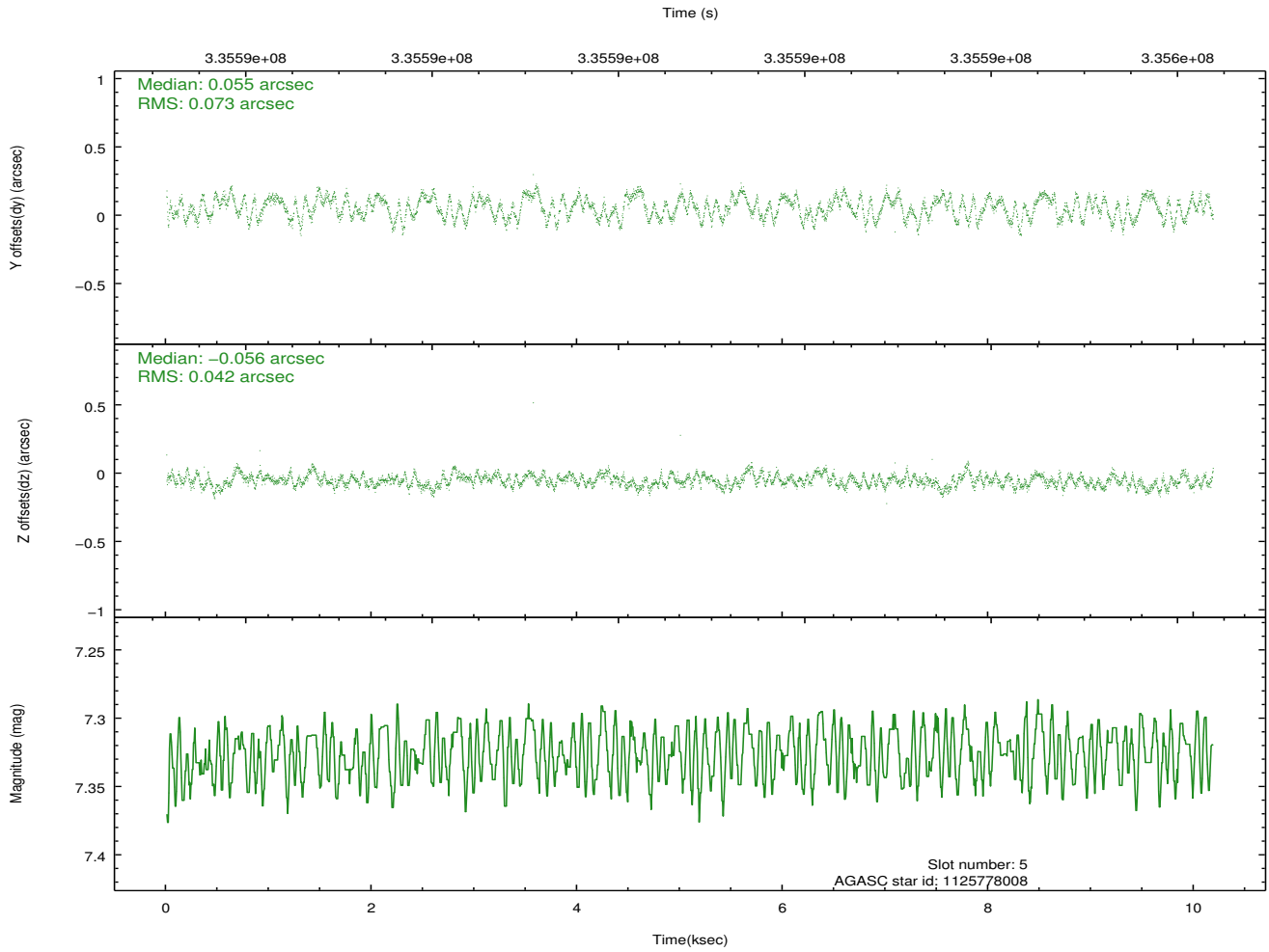
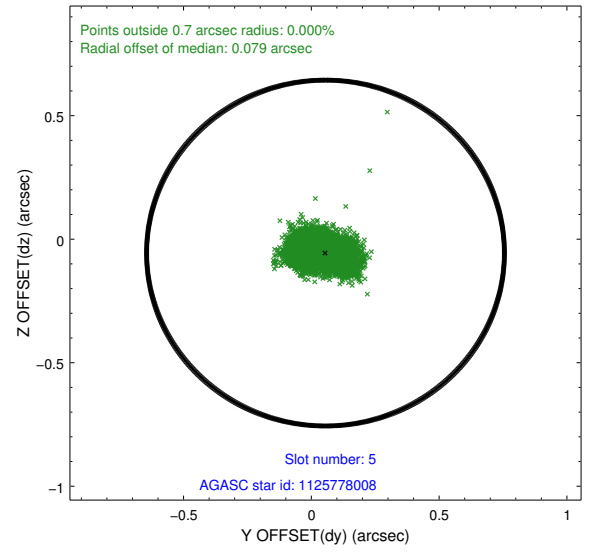
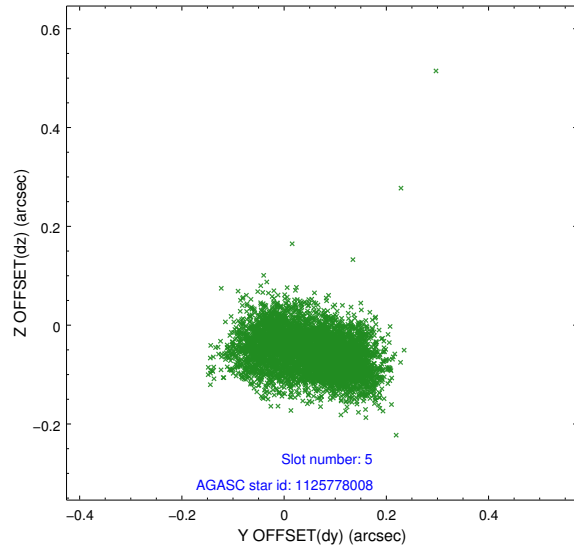
### 2.4.1 Slot 3



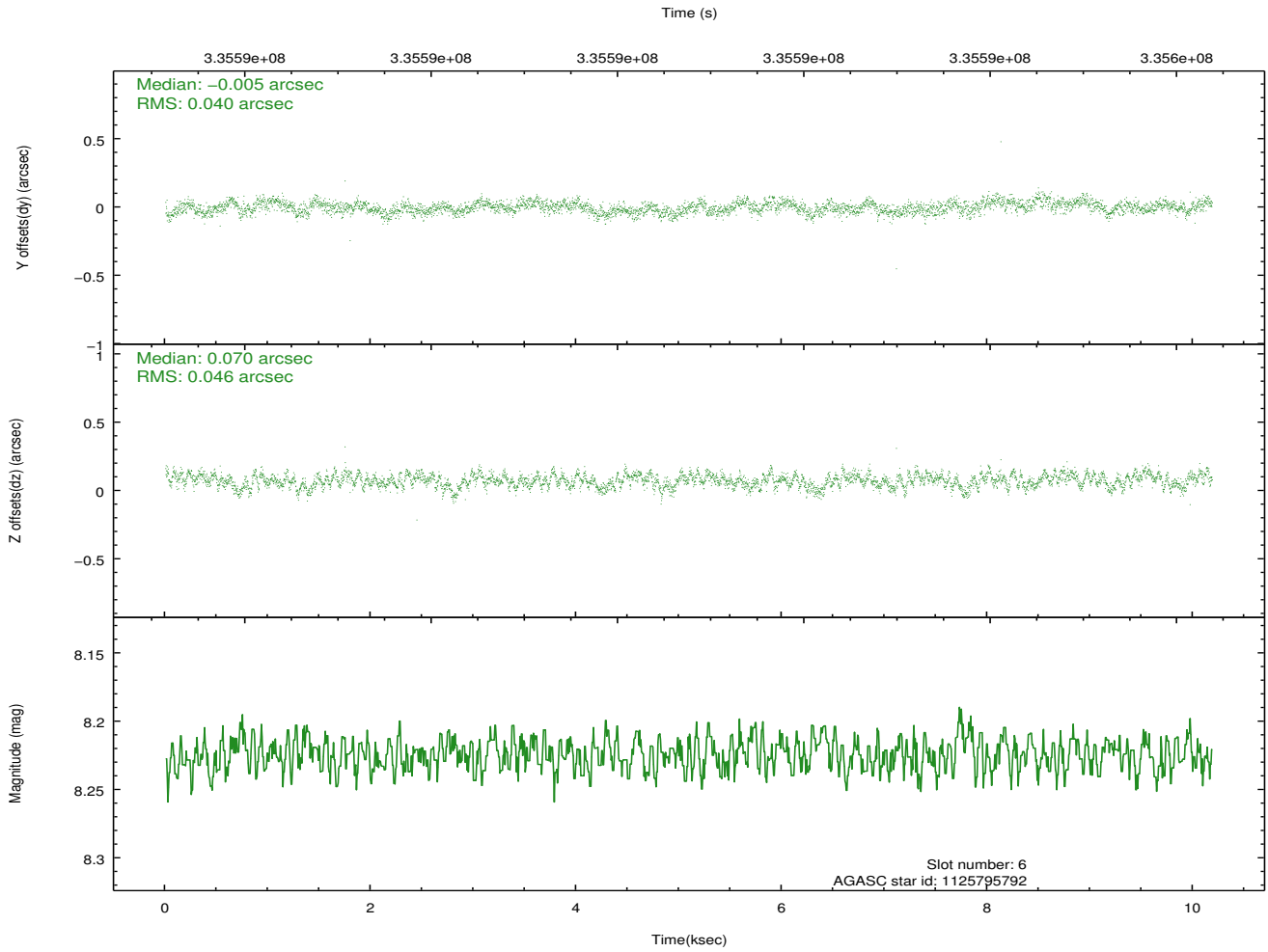
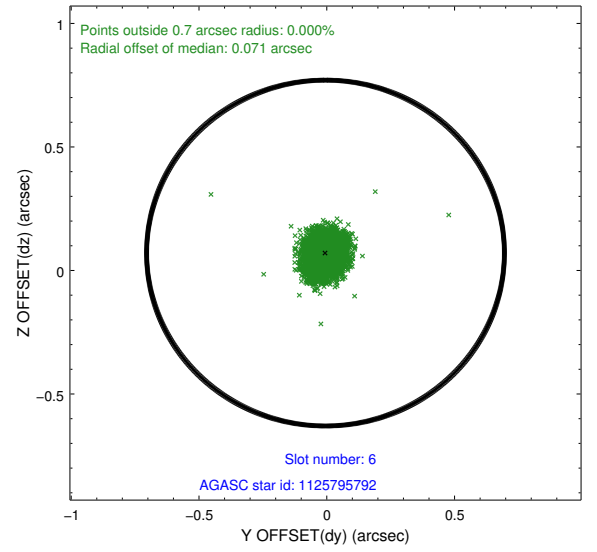
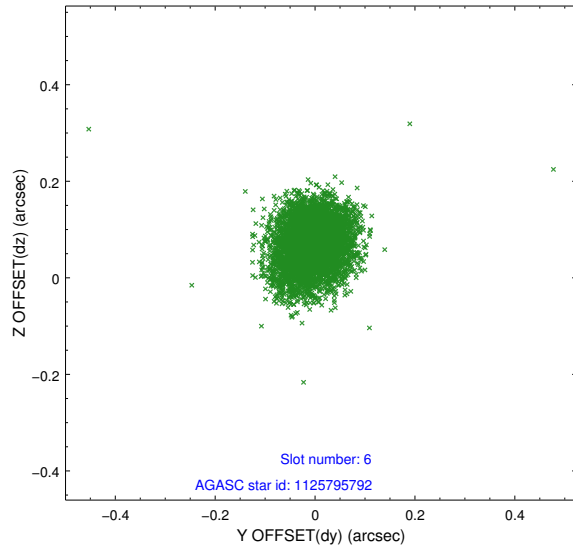
## 2.4.2 Slot 4



### 2.4.3 Slot 5

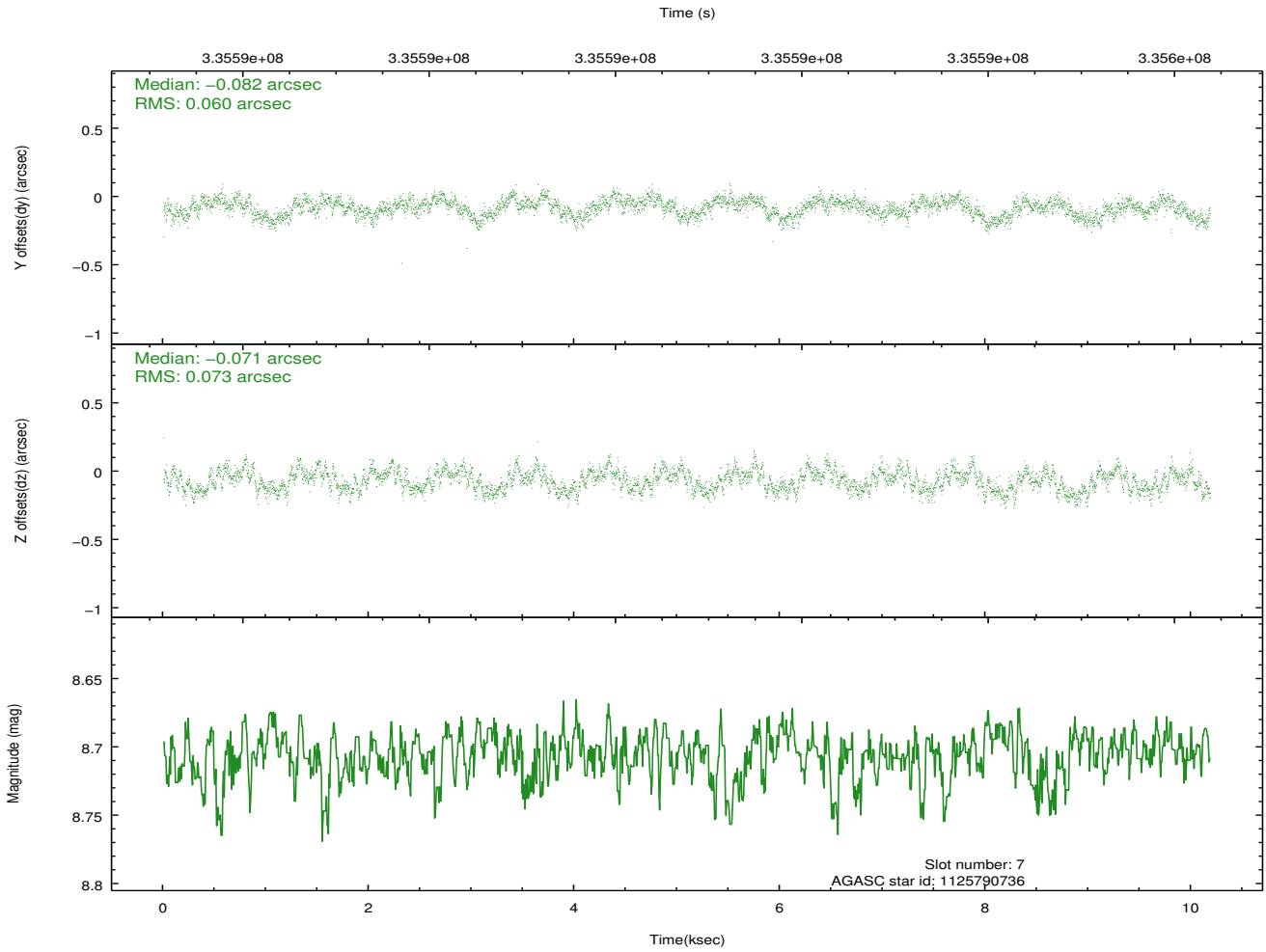
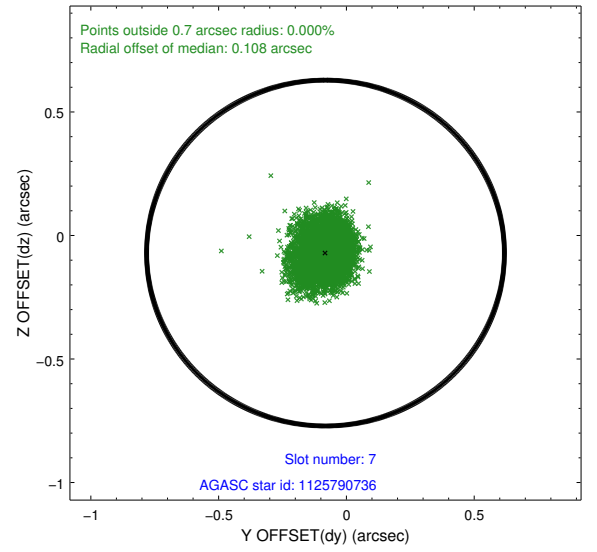
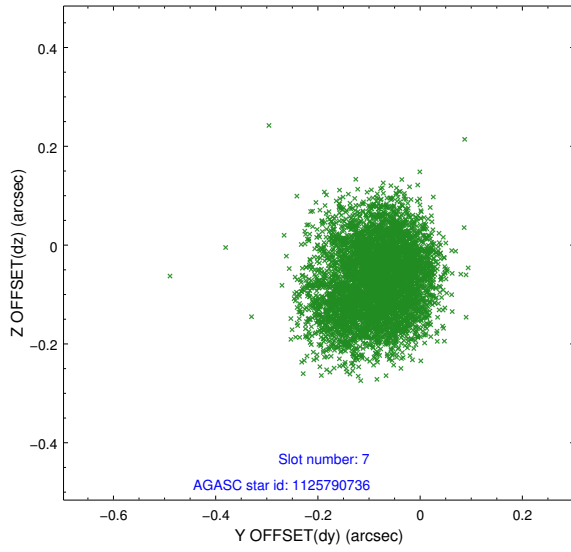


## 2.4.4 Slot 6



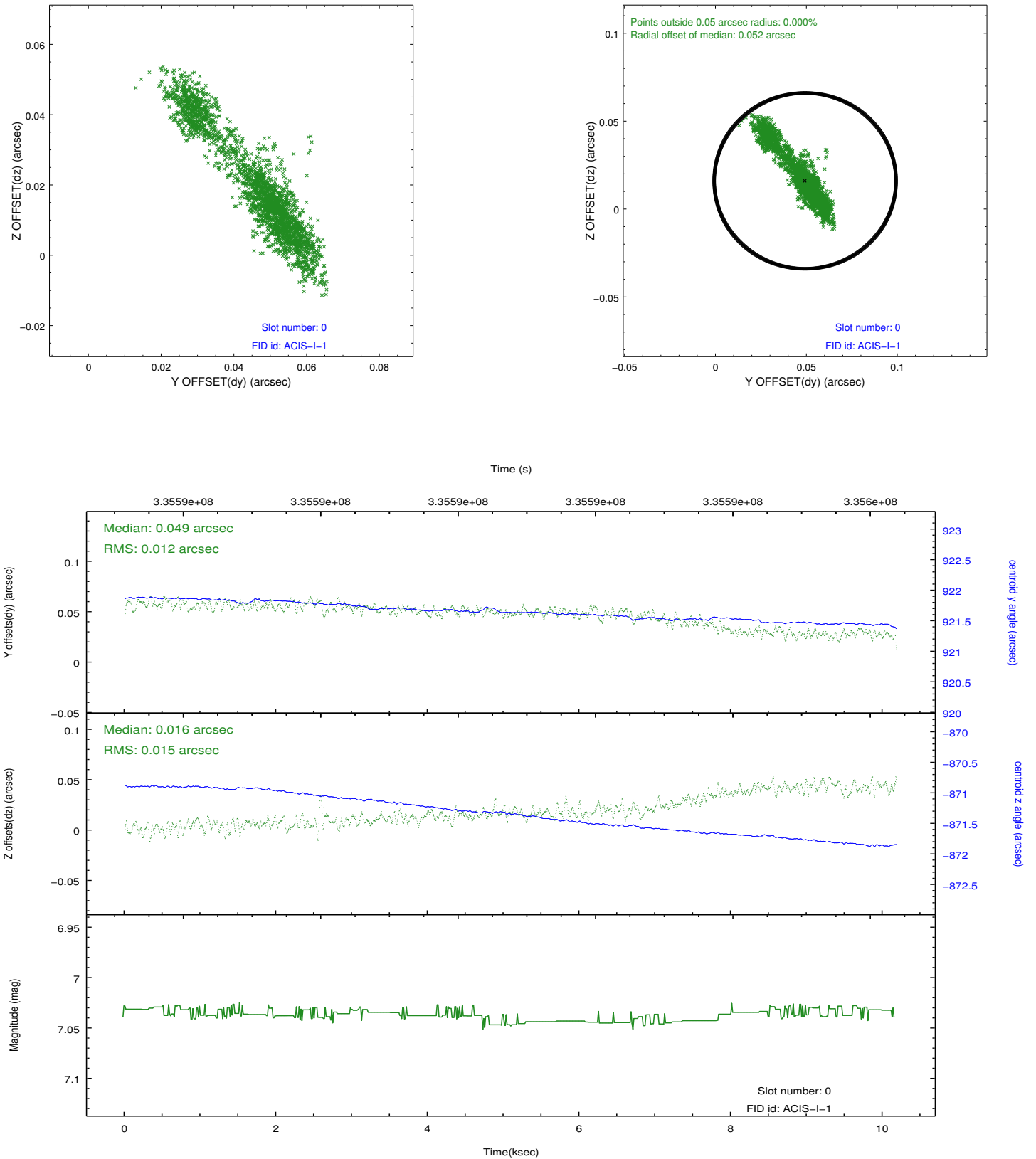


## 2.4.5 Slot 7

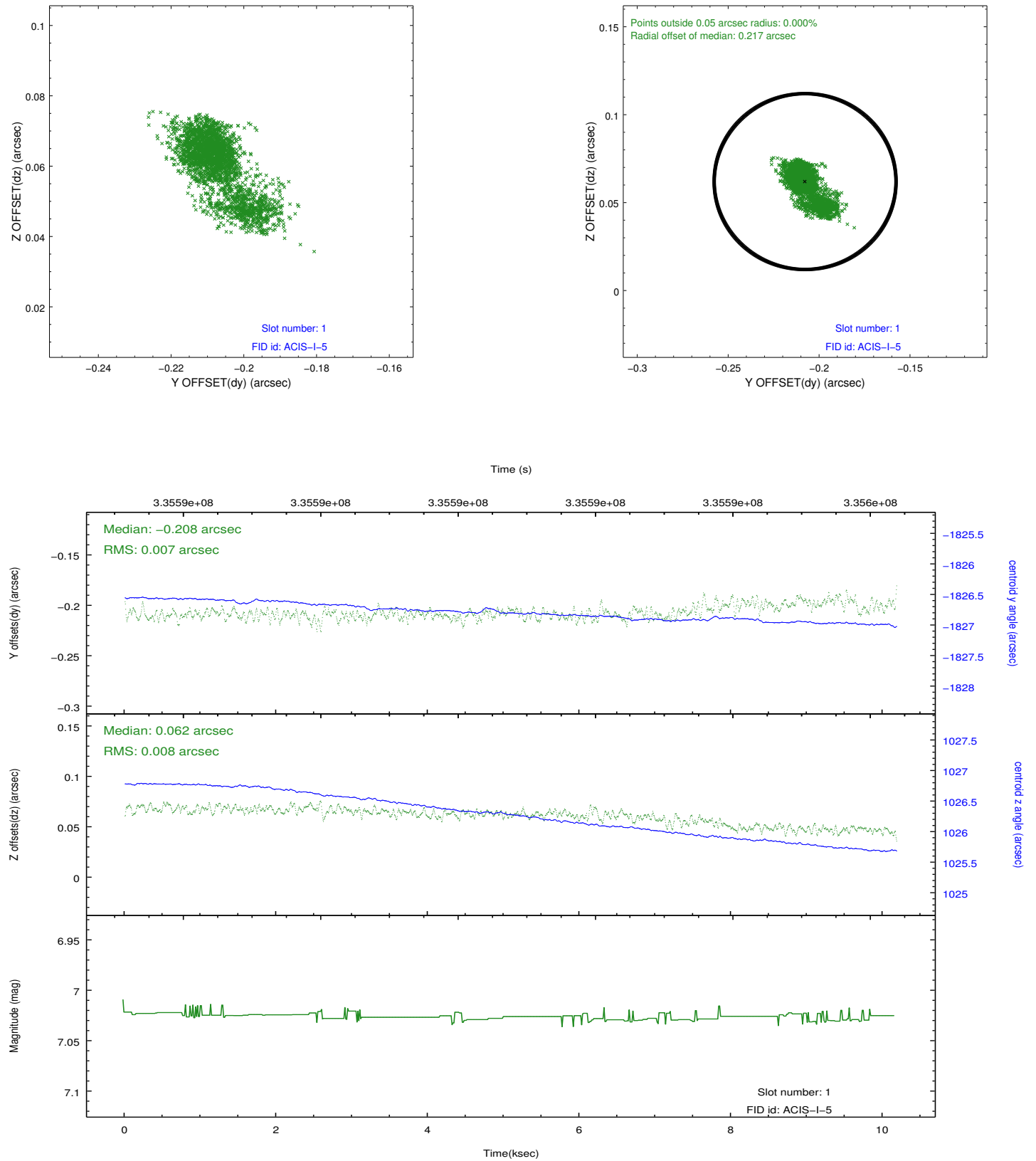


## 2.5 FID Slots

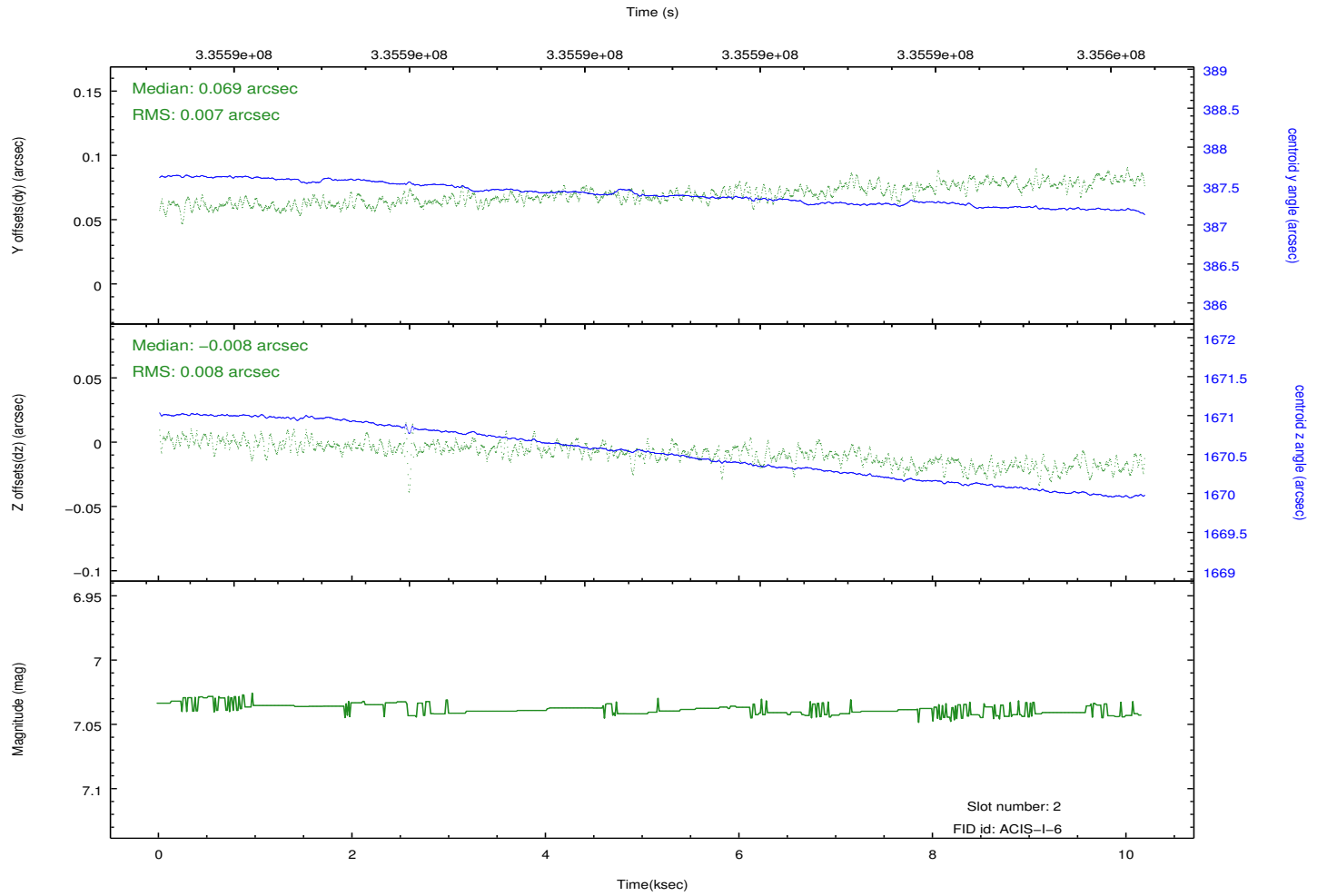
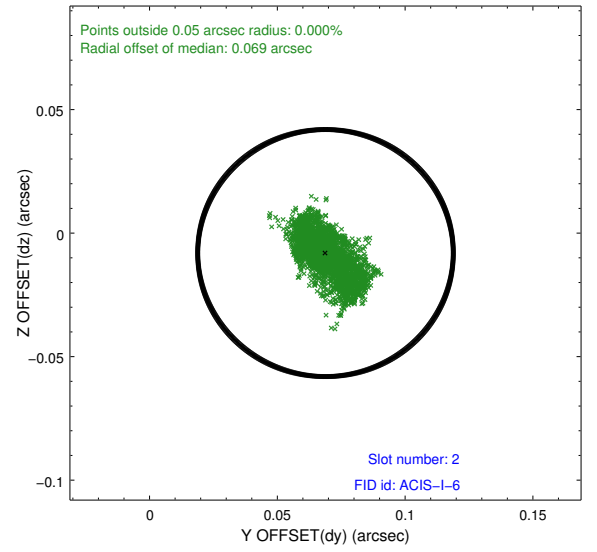
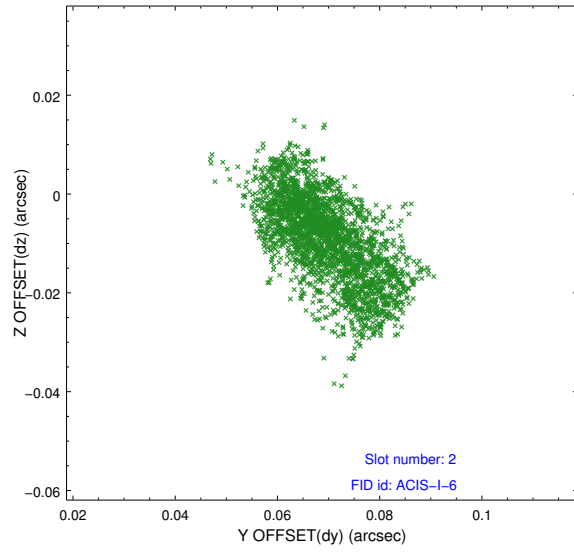
### 2.5.1 Slot 0



## 2.5.2 Slot 1



### 2.5.3 Slot 2



# A Summary

## A.1 Status

V&V Scientist	Jen Lauer
V&V Date (YYYY-MM-DD)	2012.05.29
V&V Edition	1
V&V Disposition and Status	OK
V&V Charge Time	10.1727999

## A.2 Comments

Aspect Team has examined this observation and indicated the larger than normal SIM offset is not unexpected so soon after the Normal Sun Mode anomaly, and that it is within tolerance of acceptable pointing during the observation. The science potential of the observation is not affected.