

# V&V Reference Report

## L2 ASCDS Version : 8.4.4

Observation 9048 - L2 Version 2  
Chandra X-Ray Center

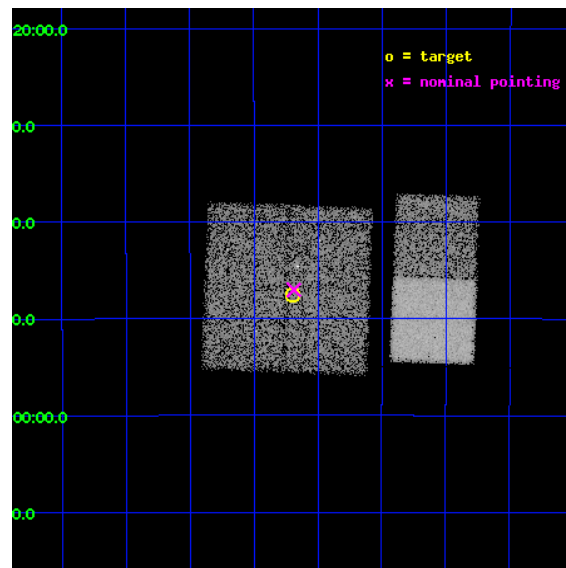
L2 Processing Date : Jun 1 2012

## Contents

<b>1</b>	<b>Front</b>	<b>2</b>
<b>2</b>	<b>OBI</b>	<b>3</b>
2.1	OBI . . . . .	3
2.1.1	Images . . . . .	3
2.1.2	Bias . . . . .	3
2.1.3	Parameters . . . . .	4
2.1.4	Events . . . . .	4
2.2	Compared Parameters . . . . .	5
2.3	Aspect . . . . .	6
2.4	Star Slots . . . . .	9
2.4.1	Slot 3 . . . . .	9
2.4.2	Slot 4 . . . . .	10
2.4.3	Slot 5 . . . . .	11
2.4.4	Slot 6 . . . . .	12
2.4.5	Slot 7 . . . . .	13
2.5	FID Slots . . . . .	14
2.5.1	Slot 0 . . . . .	14
2.5.2	Slot 1 . . . . .	15
2.5.3	Slot 2 . . . . .	16
<b>A</b>	<b>Summary</b>	<b>17</b>
A.1	Status . . . . .	17
A.2	Comments . . . . .	17

# 1 Front

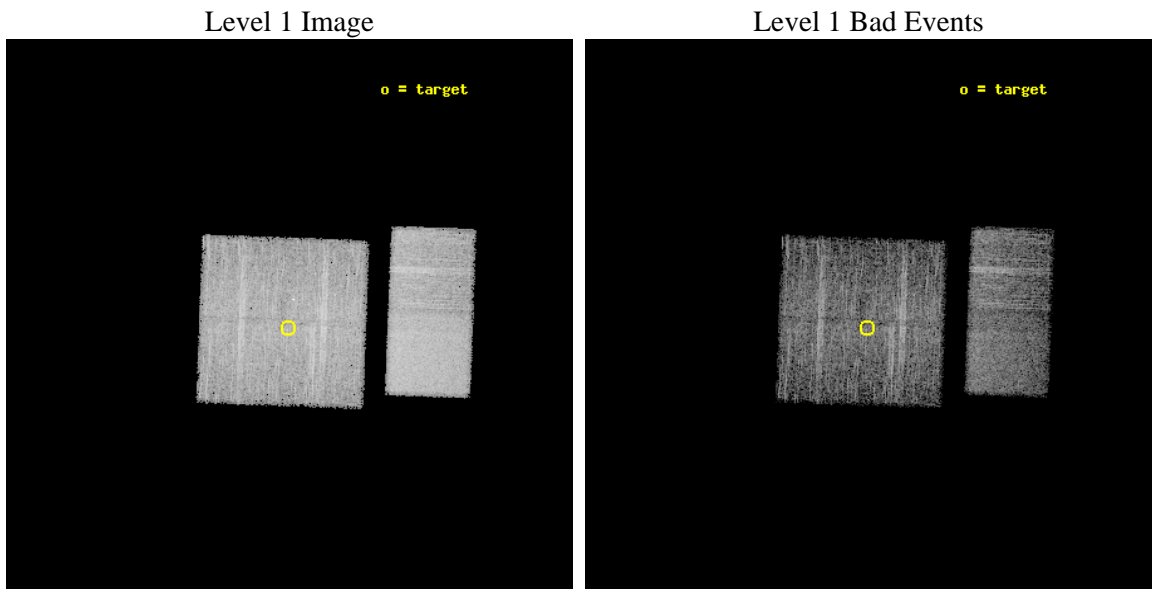
seq_num	400899	Sequence number
obs_id	9048	Observation id
title	Localization and Spectra of INTEGRAL-Selected Sources in the Galactic Plane	Proposal title
observer	Dr. John Tomsick	Principal investigator
object	IGR J17507-2647	Source name
dtcycle	0	&#160
cycle	P	events from which exps? Prim/Second/Both
ra_targ	267.675	Observer's specified target RA [deg]
dec_targ	-26.791944	Observer's specified target Dec [deg]
ra_nom	267.67191960946	Nominal RA [deg]
dec_nom	-26.783806198856	Nominal Dec [deg]
roll_nom	92.133470520898	Nominal Roll [deg]
revision	2	Processing version of data
ontime	4758.165417254	Sum of GTIs [s]
livetime	4697.9146617175	Livetime [s]
ontime0	4758.0422972441	Sum of GTIs [s]
ontime1	4758.0833372474	Sum of GTIs [s]
ontime2	4758.1243772507	Sum of GTIs [s]
ontime3	4758.165417254	Sum of GTIs [s]
ontime6	4758.2474972606	Sum of GTIs [s]
ontime7	4758.2064572573	Sum of GTIs [s]
l2events	57341	Number of level 2 events



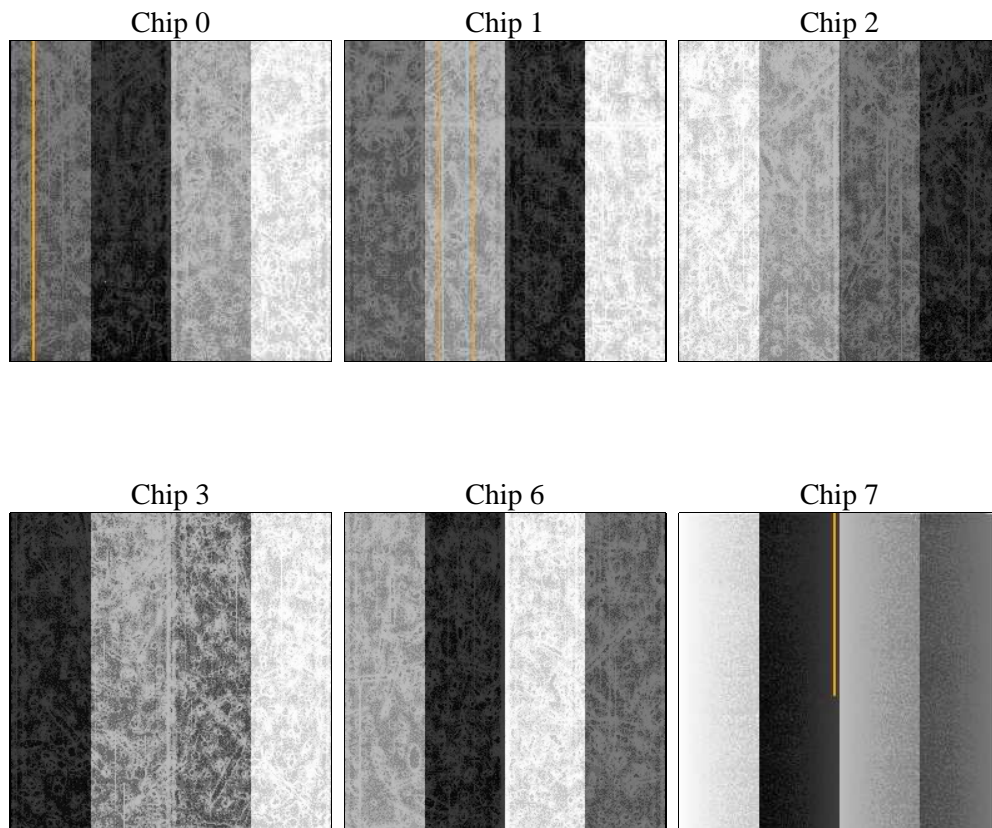
## 2 OBI

### 2.1 OBI

#### 2.1.1 Images



#### 2.1.2 Bias



### 2.1.3 Parameters

obi_num	0	Obi number	sched_exp_time	5000.000000	[s] Scheduled observation exposure time
ascdsver	8.4.4	Processing system revision	ontime	4758.165417254	Sum of GTIs [s]
caldsver	4.4.9	&#160	ontime0	4758.0422972441	Sum of GTIs [s]
date	2012-06-01T06:29:24	Date and time of file creation	ontime1	4758.0833372474	Sum of GTIs [s]
revision	2	Processing version of data	ontime2	4758.1243772507	Sum of GTIs [s]
			ontime3	4758.165417254	Sum of GTIs [s]
			ontime6	4758.2474972606	Sum of GTIs [s]
			ontime7	4758.2064572573	Sum of GTIs [s]
			l1events	305076	Number of level 1 events

### 2.1.4 Events

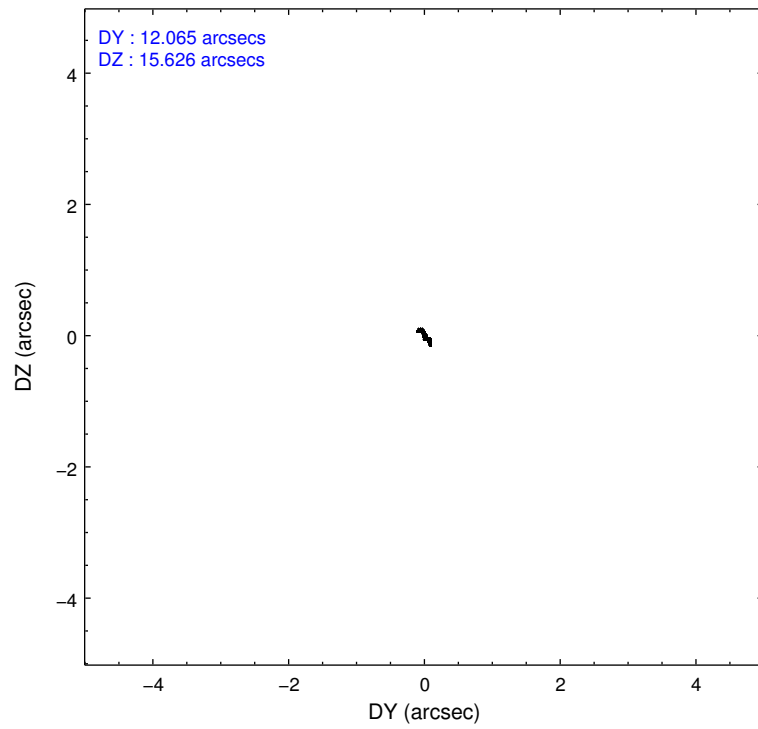
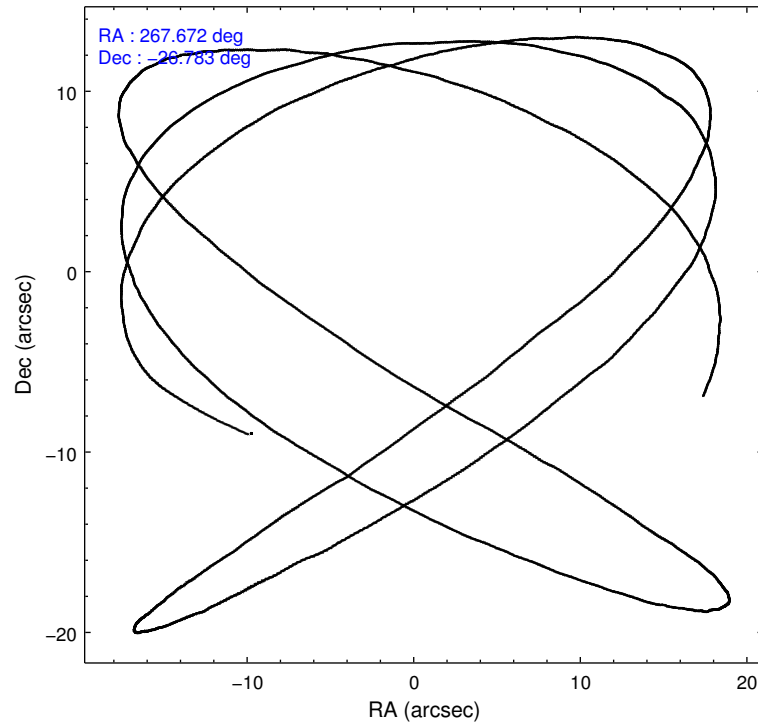
	ccd 0	ccd 1	ccd 2	ccd 3	ccd 6	ccd 7		ccd 0	ccd 1	ccd 2	ccd 3	ccd 6	ccd 7
level 1 events	45256	45898	47551	47791	49914	68666	grade 0 events	2784	2760	3273	2781	2839	2580
rejected events	38704	39242	40756	41500	43158	39514		6%	6%	6%	5%	5%	3%
rejected %	85%	85%	85%	86%	86%	57%	grade 1 events	36	23	44	51	22	85
								0%	0%	0%	0%	0%	0%
							grade 2 events	1461	1521	1312	1253	1408	6098
								3%	3%	2%	2%	2%	8%
							grade 3 events	603	577	594	560	594	2499
								1%	1%	1%	1%	1%	3%
							grade 4 events	581	588	561	616	560	2388
								1%	1%	1%	1%	1%	3%
							grade 5 events	1978	2170	1946	2430	2383	6416
								4%	4%	4%	5%	4%	9%
							grade 6 events	1135	1219	1065	1089	1362	15633
								2%	2%	2%	2%	2%	22%
							grade 7 events	36678	37040	38756	39011	40746	32967
								81%	80%	81%	81%	81%	48%

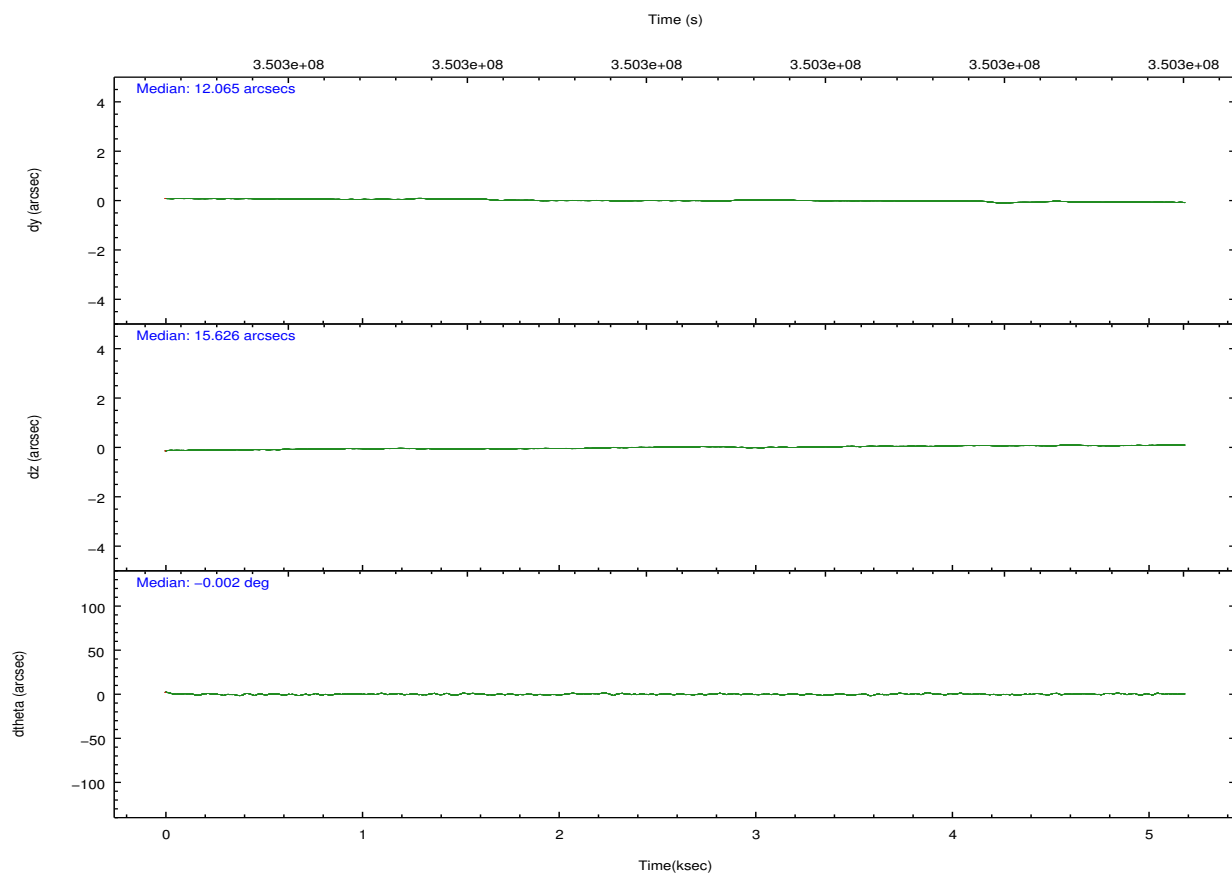
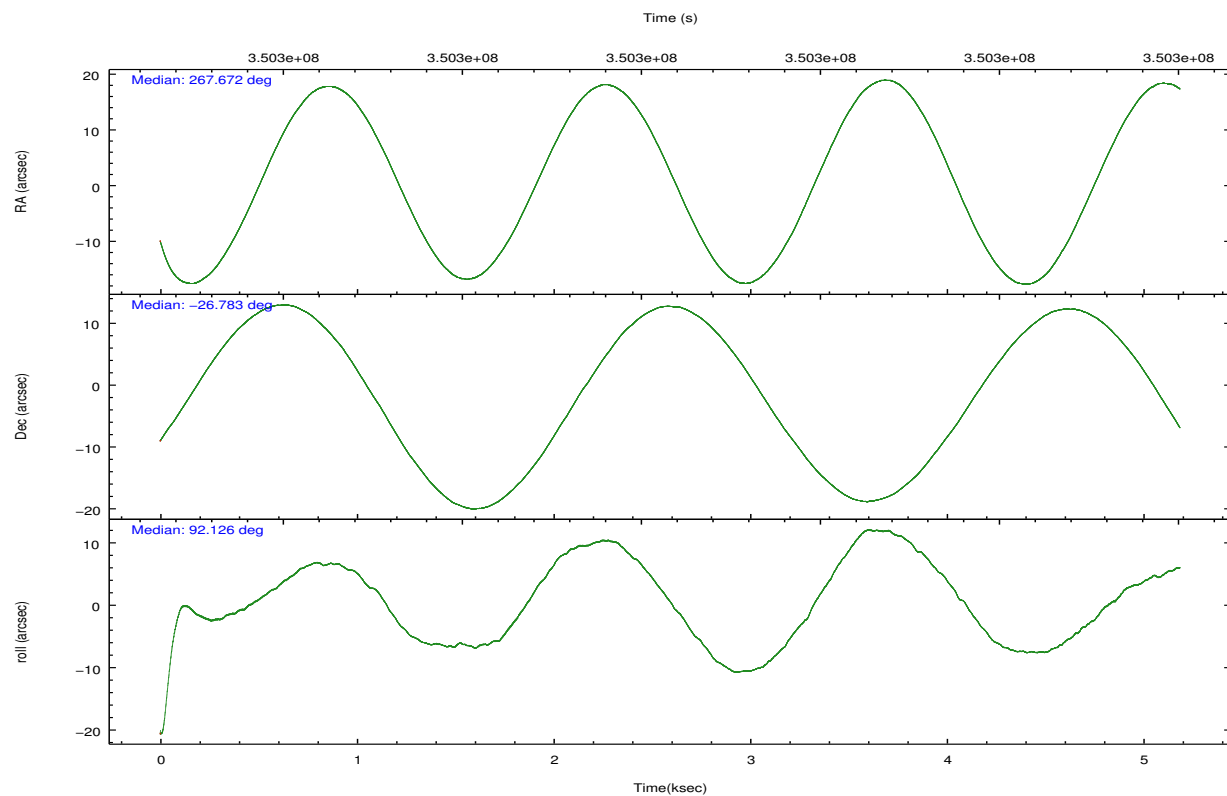


## 2.2 Compared Parameters

Parameter	Planned	Actual	Parameter	Planned	Actual
Instrument	ACIS	ACIS	Obspar format version number	7	7
Detector	ACIS-012367	ACIS-012367	Obspar file type	PREDICTED	ACTUAL
Grating	NONE	NONE	Obspar update status	NONE	UPDATED
Data mode	FAINT	FAINT	CCD I0 on	Y	Y
Observation mode	POINTING	POINTING	CCD I1 on	Y	Y
[deg] Pointing RA	267.688479	267.6719196094608	CCD I2 on	Y	Y
[deg] Pointing Dec	-26.807545	-26.78380619885576	CCD I3 on	Y	Y
[deg] Pointing Roll	91.932306	92.13347052089756	CCD S0 on	N	N
[mm] SIM focus pos	-0.782348	-0.7809083437167272	CCD S1 on	N	N
[mm] SIM defocus	0	0.001439871863259334	CCD S2 on	O1	Y
[mm] SIM translation stage pos	-233.592463	-233.5874344608287	CCD S3 on	O2	Y
[mm] SIM translation stage offset	0	-0.005018542100998502	CCD S4 on	N	N
[s] Observation start time (MET)	350297752.184000	350297227.41572	CCD S5 on	N	N
Observation start date	2009-02-06T08:54:46	2009-02-06T08:47:07	Number of optional ACIS chips dropped	0	0
[s] Observation end time (MET)	350302752.184000	350302989.96601	On-chip summing requested	N	N
Observation end date	2009-02-06T10:18:06	2009-02-06T10:23:09	Subarray requested	NONE	NONE
Read mode	TIMED	TIMED	Alternating exposures requested	N	N
			[s] Primary exposure time	0.000000	3.2

## 2.3 Aspect



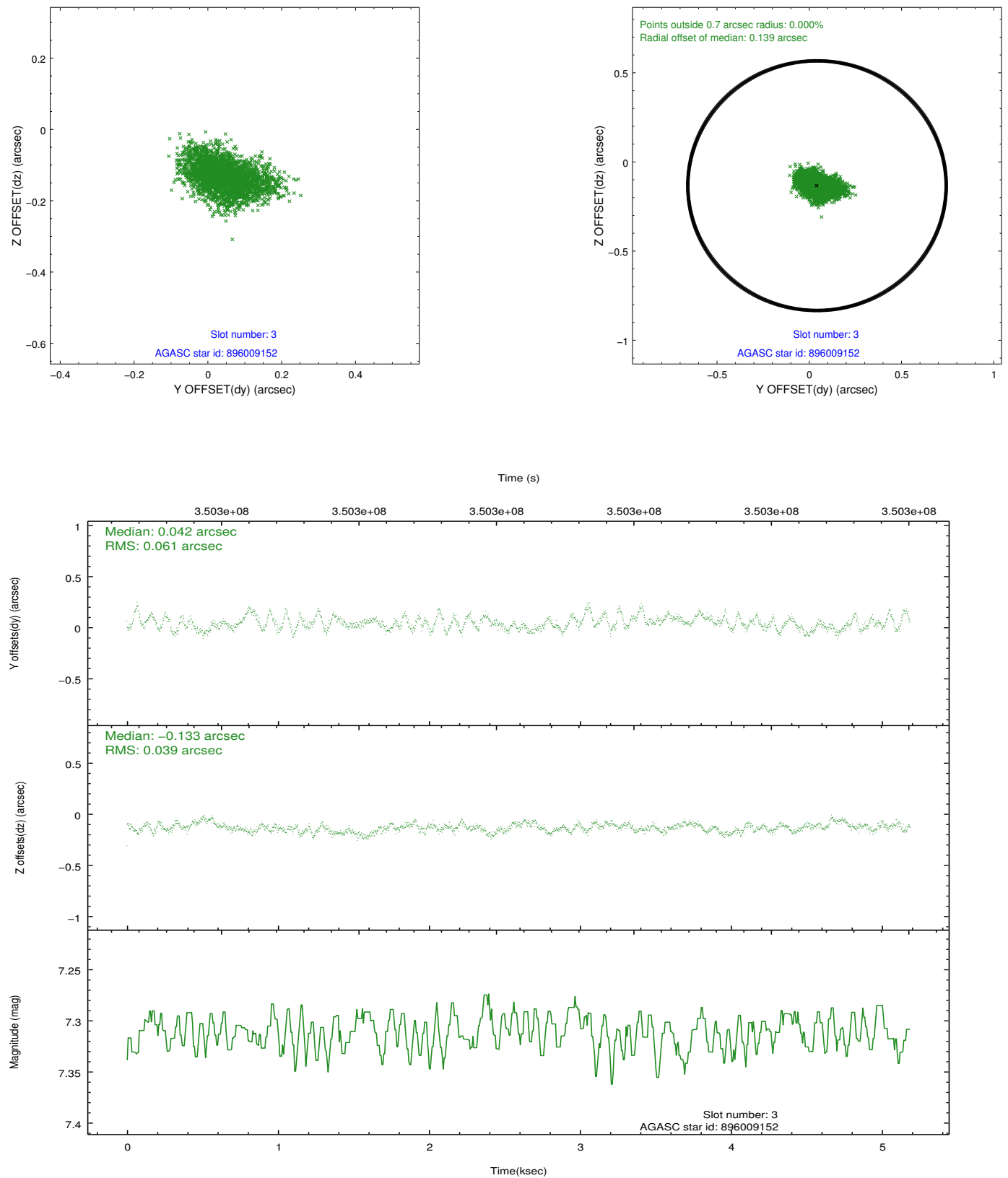


### Slot Statistics

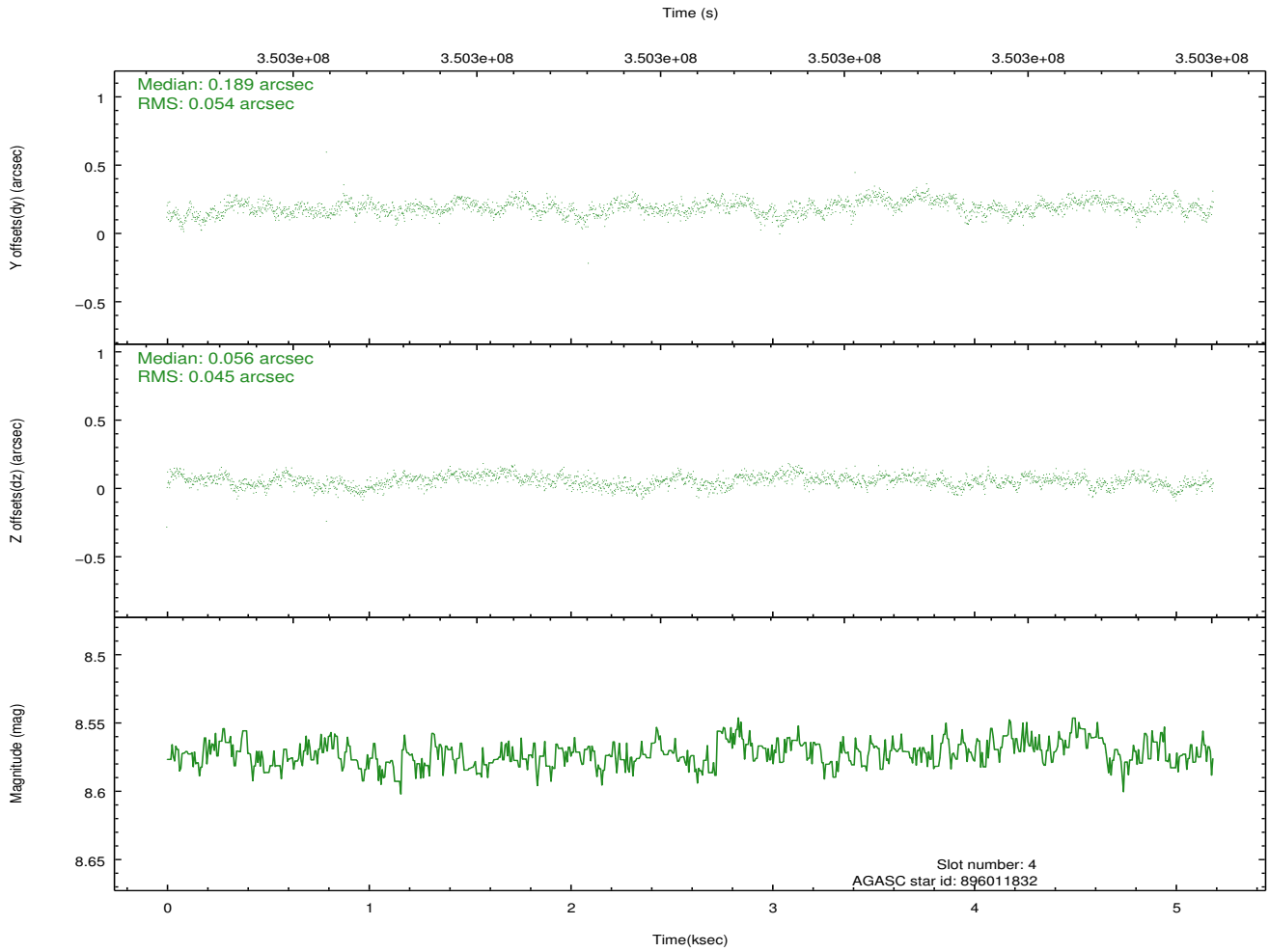
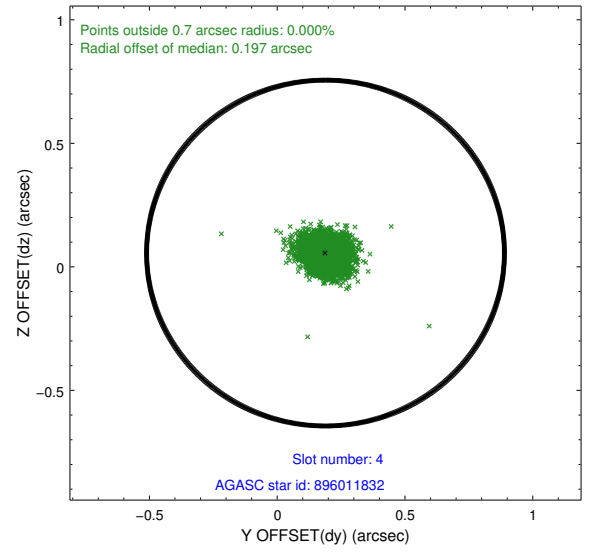
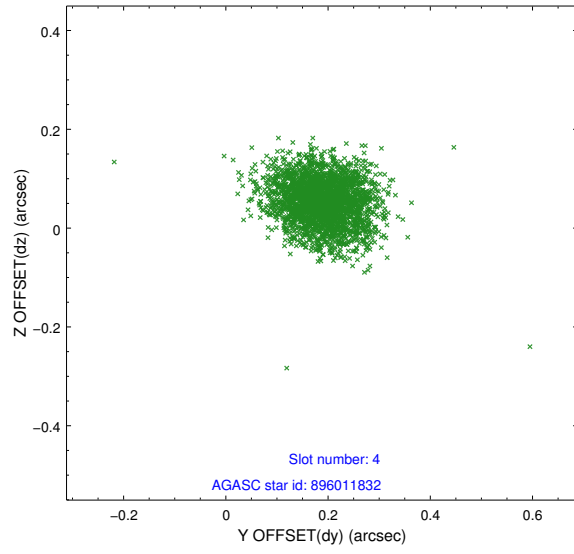
slot	status	id	mag	n_pts	med_dy	med_dz	dr1	dr2	ra	dec	mean_y	mean_z
0	FID	ACIS-I-1	7.01	1266	-0.013	0.025	0.008	0.013	0.000000	0.000000	927.46	-839.21
1	FID	ACIS-I-2	6.94	1266	-0.093	-0.077	0.008	0.015	0.000000	0.000000	-766.07	-846.34
2	FID	ACIS-I-6	7.01	1266	0.015	0.118	0.007	0.015	0.000000	0.000000	392.58	1702.10
3	GUIDE	896009152	7.31	2530	0.042	-0.133	0.076	0.127	267.588100	-27.061669	-905.73	352.39
4	GUIDE	896011832	8.57	2529	0.189	0.056	0.074	0.118	267.406704	-27.398054	-2097.49	972.00
5	GUIDE	897712576	8.13	2530	-0.178	0.182	0.058	0.092	268.256910	-26.333794	1636.17	-1889.58
6	GUIDE	897717760	7.26	2531	0.046	0.034	0.068	0.102	268.392593	-27.282645	-1792.43	-2194.69
7	GUIDE	896011536	9.36	2525	-0.094	-0.133	0.116	0.209	267.007333	-26.766562	212.57	2182.35

## 2.4 Star Slots

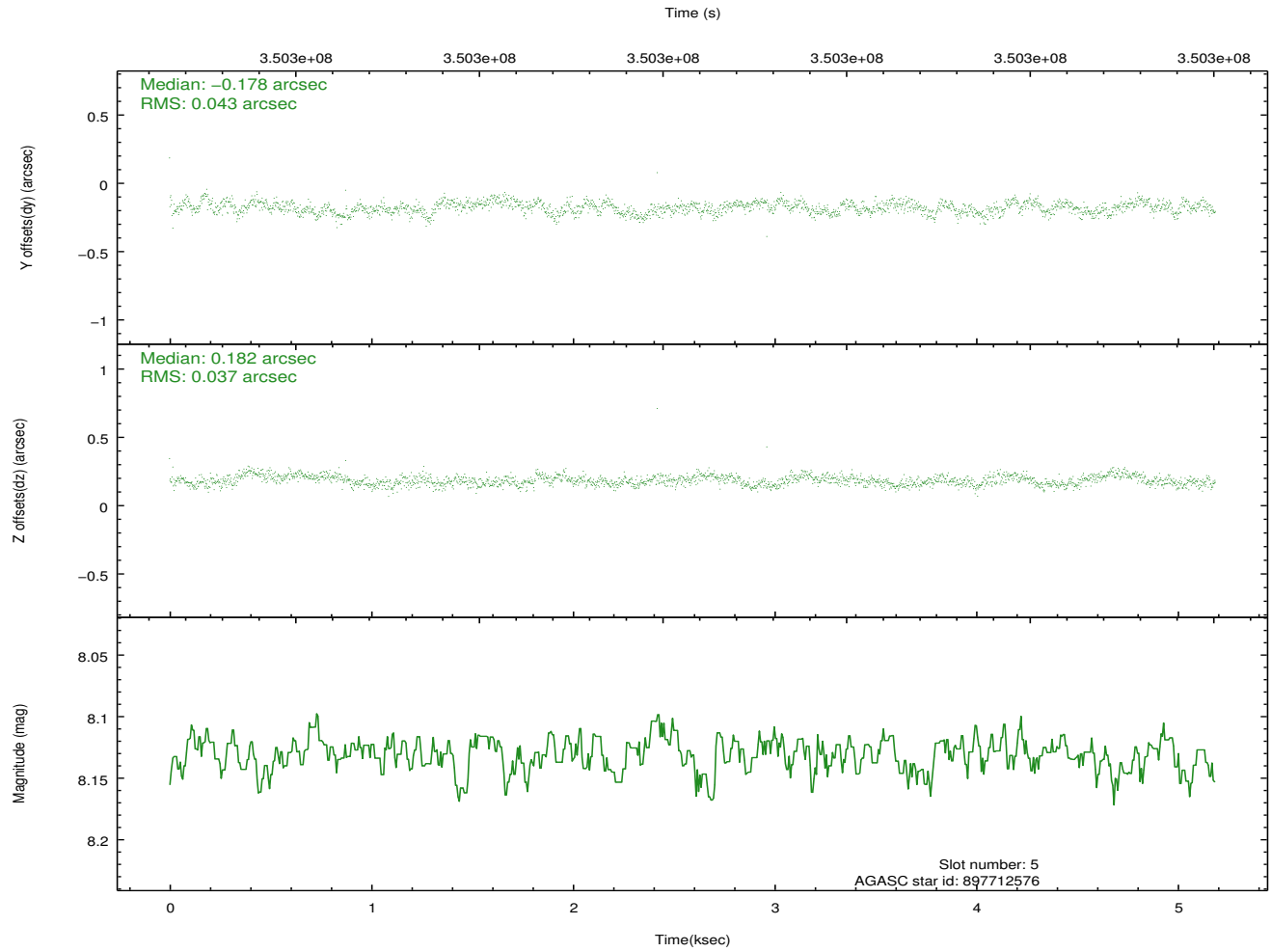
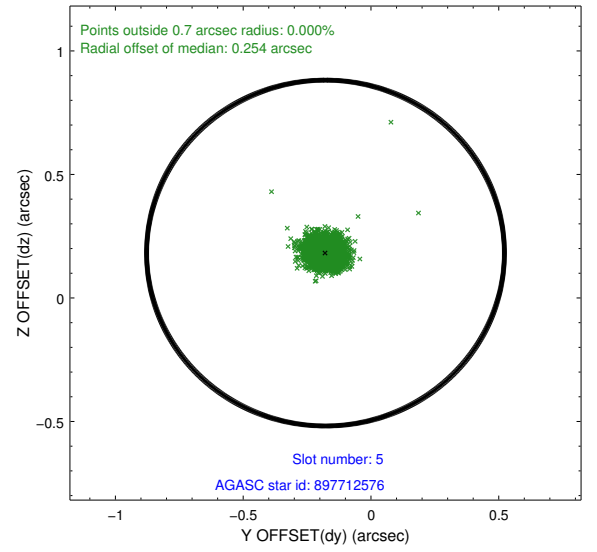
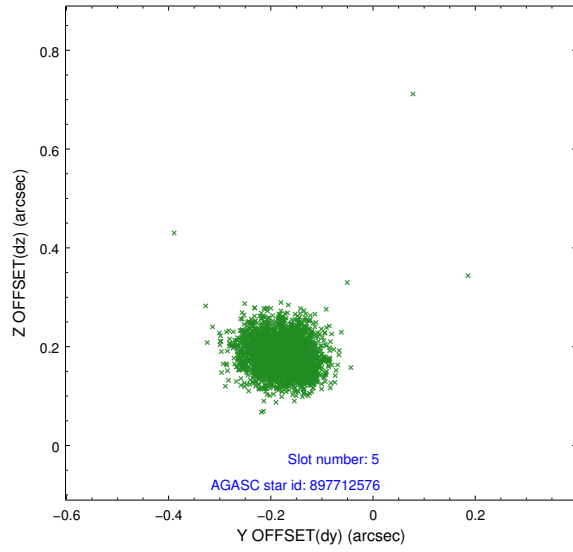
### 2.4.1 Slot 3



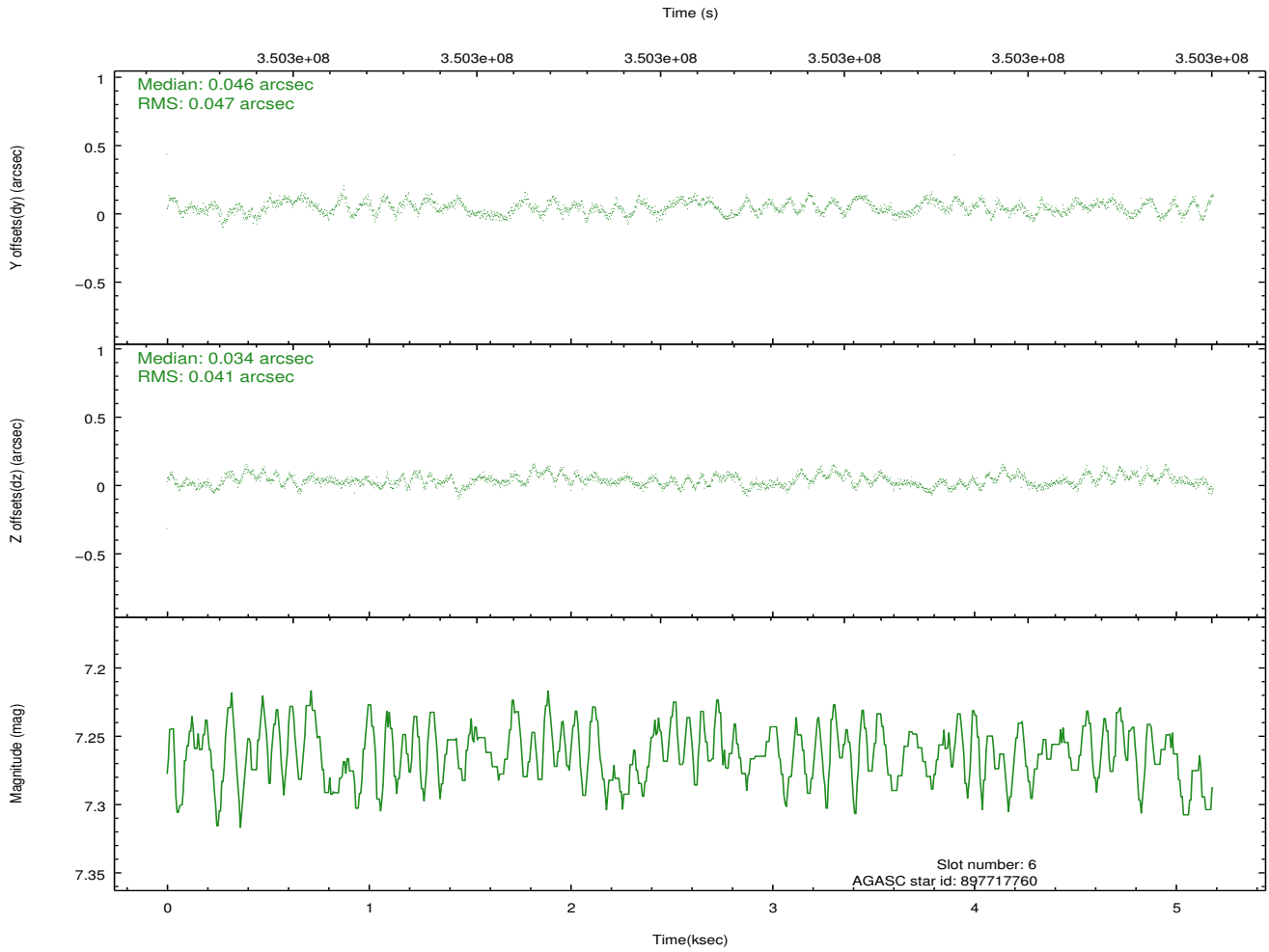
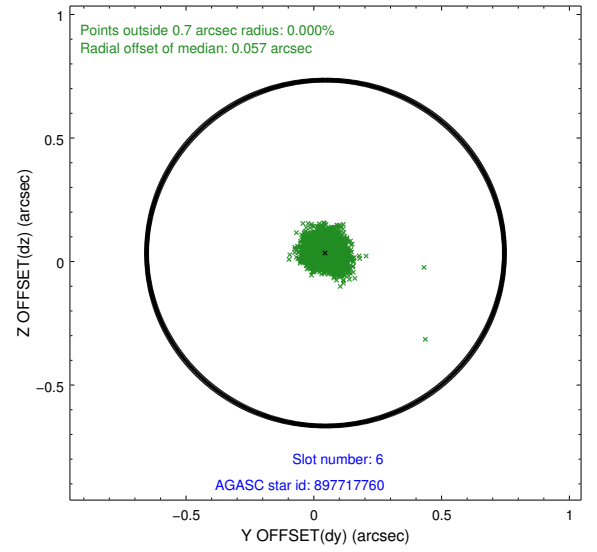
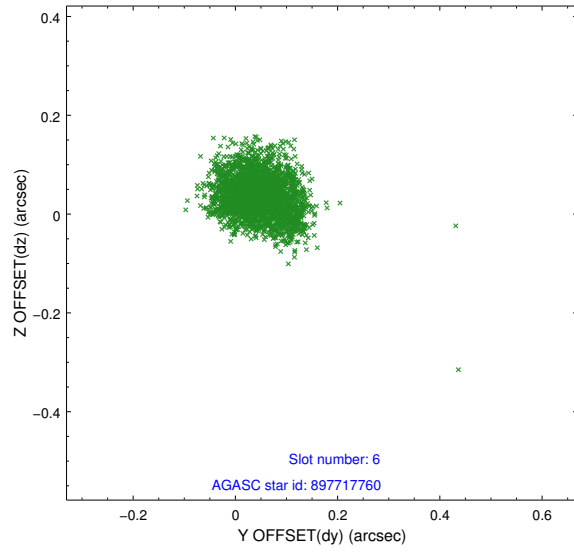
## 2.4.2 Slot 4



### 2.4.3 Slot 5

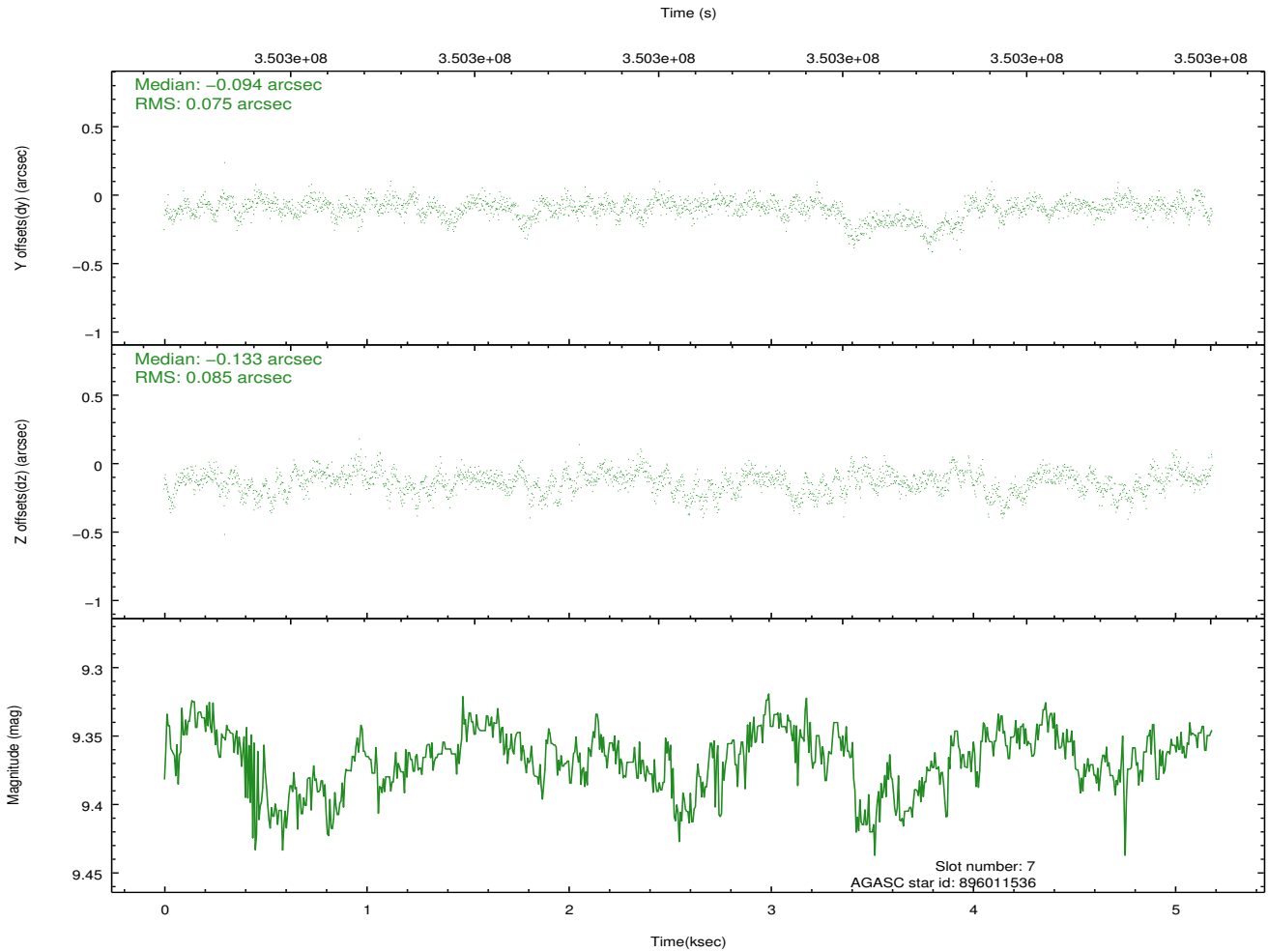
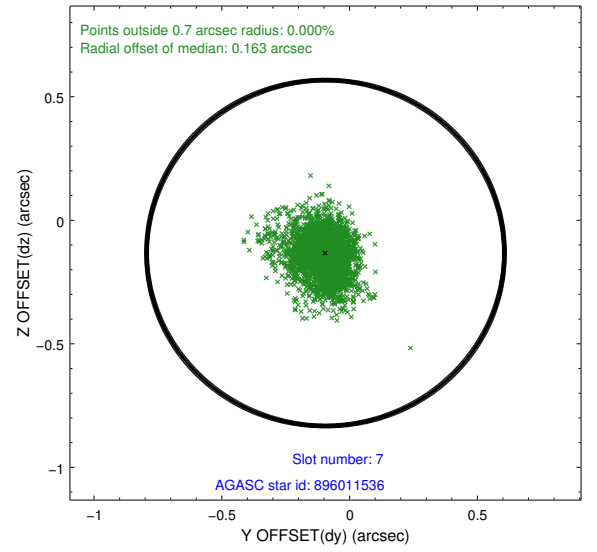
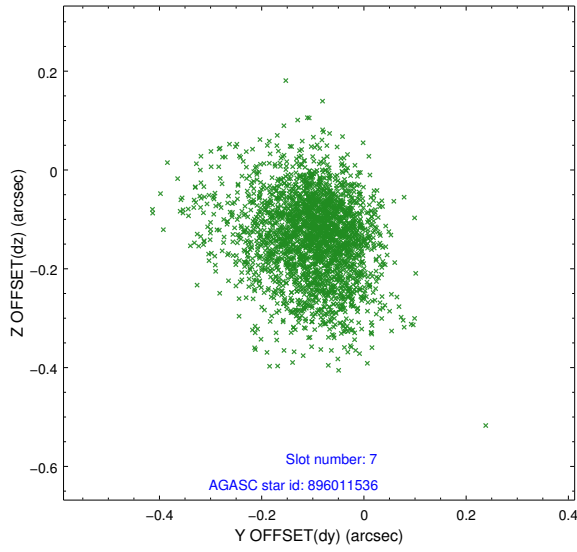


## 2.4.4 Slot 6



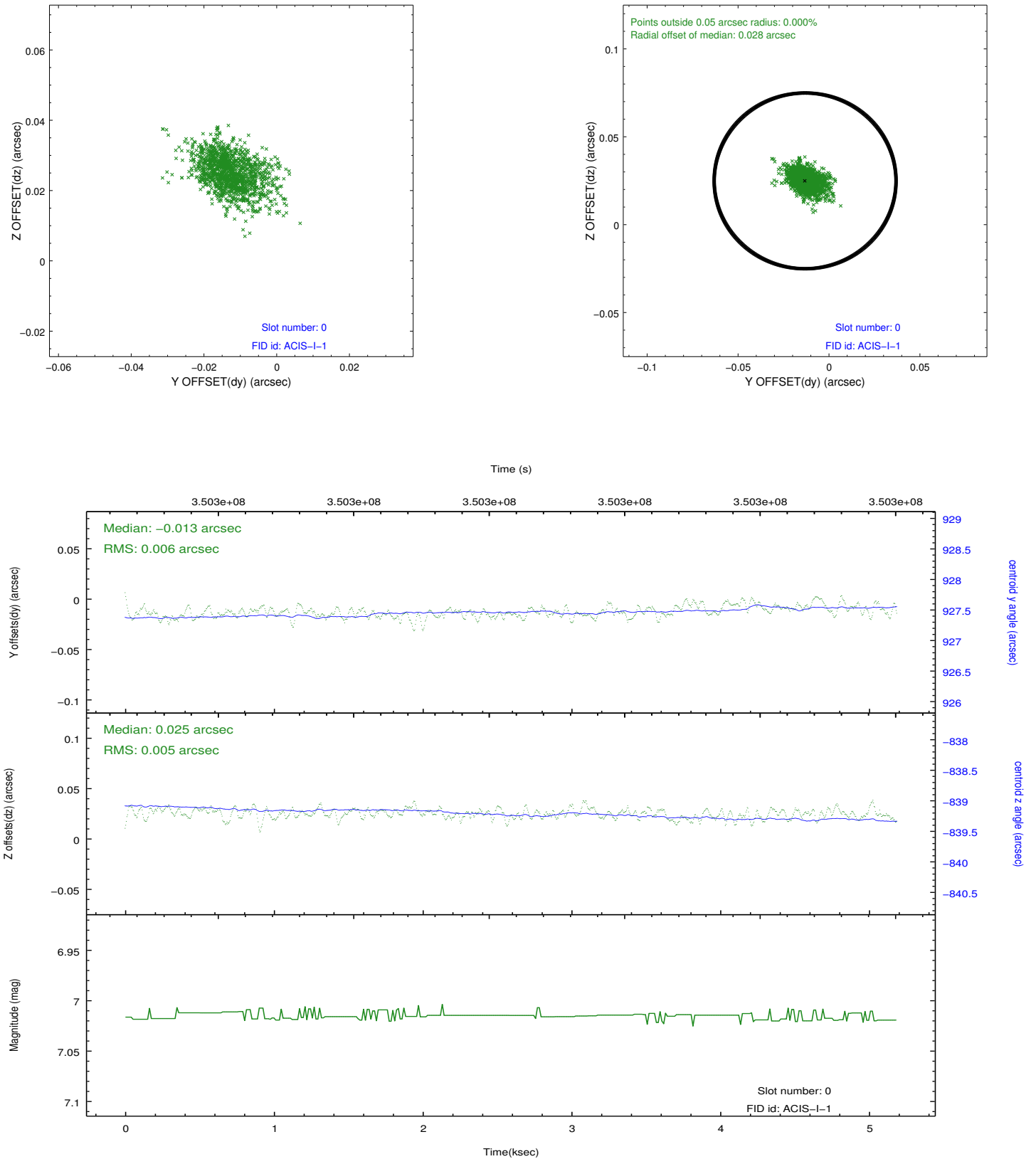


## 2.4.5 Slot 7

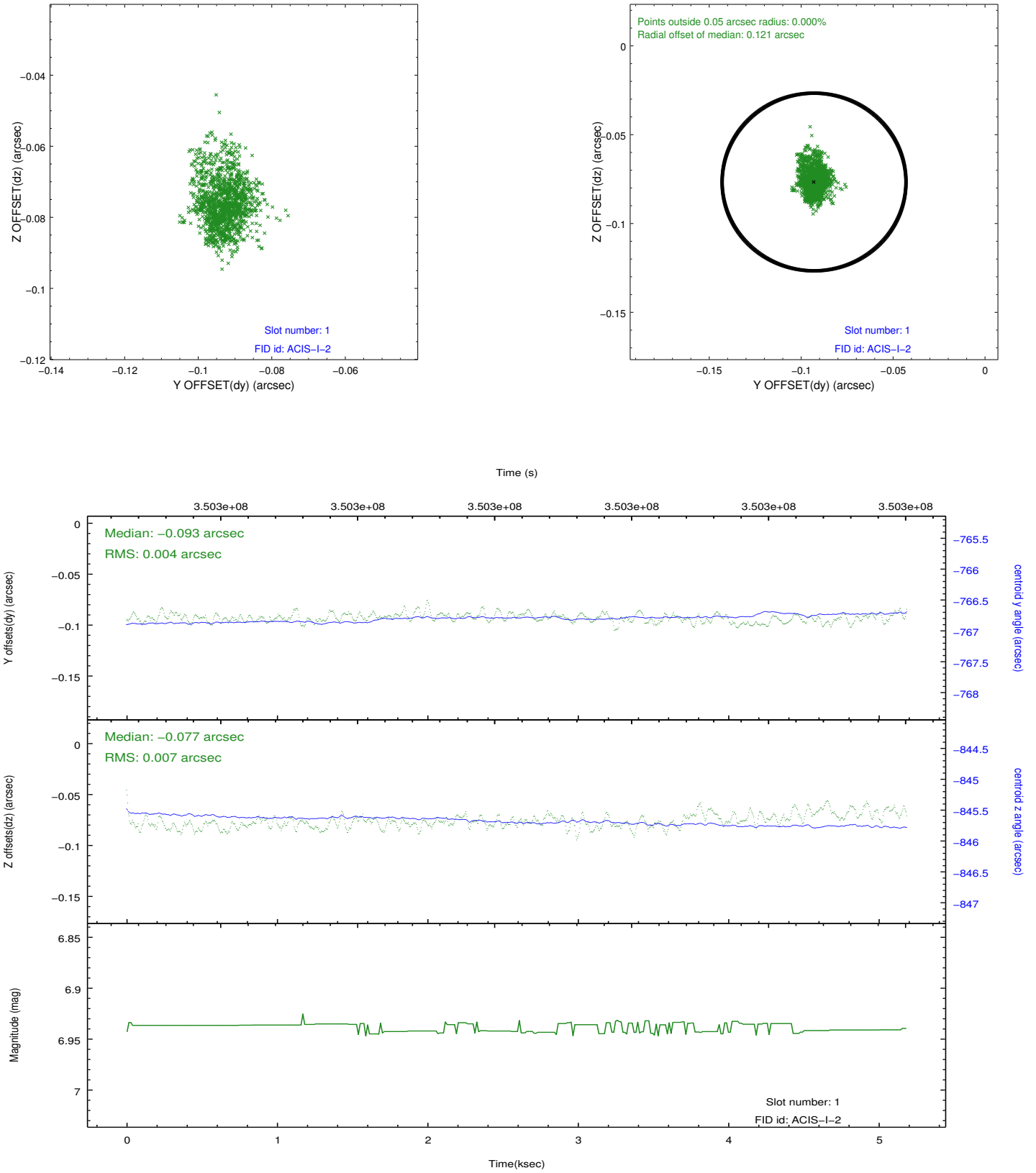


## 2.5 FID Slots

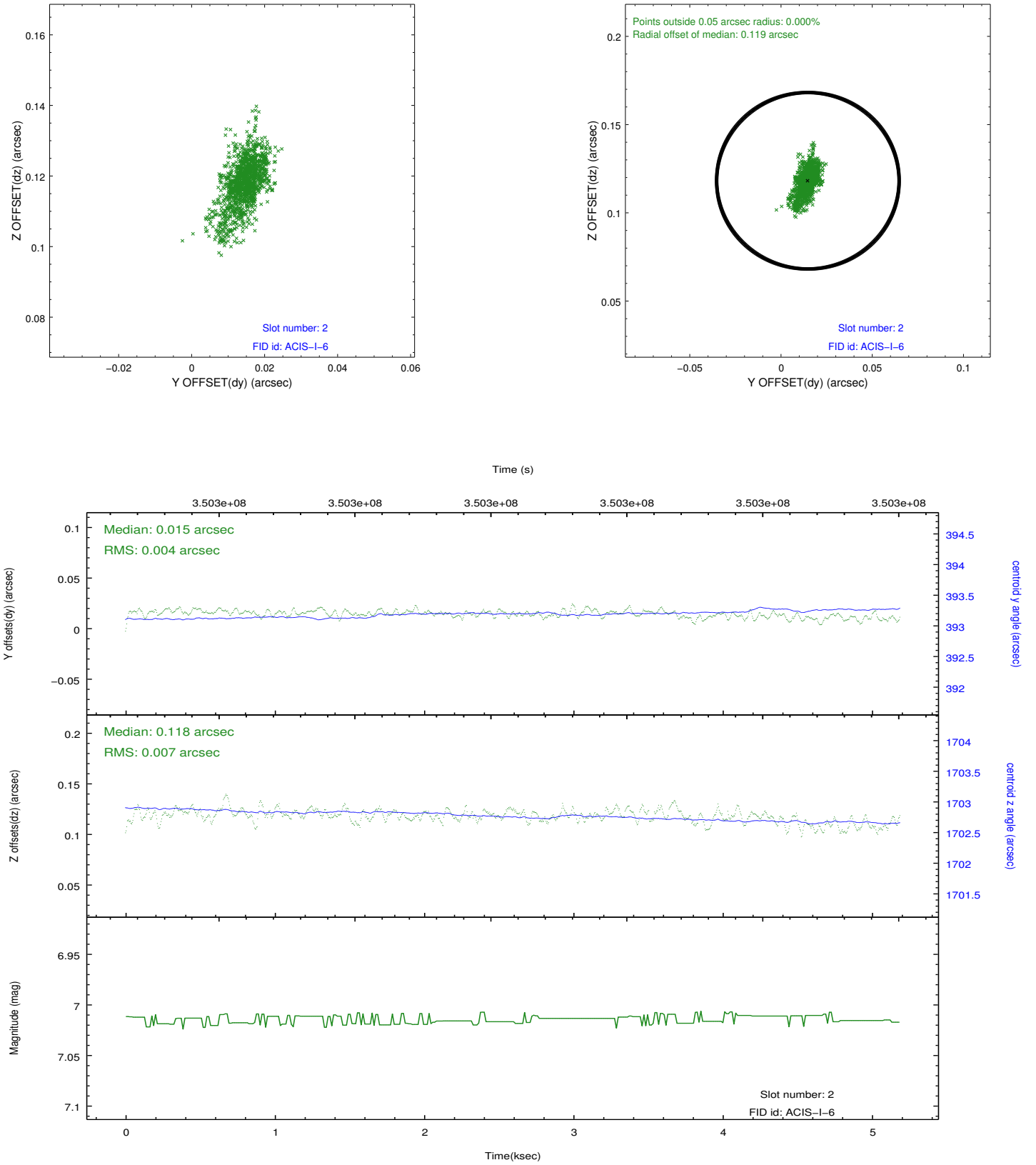
### 2.5.1 Slot 0



## 2.5.2 Slot 1



### 2.5.3 Slot 2



## A Summary

### A.1 Status

V&V Scientist	Jen Lauer
V&V Date (YYYY-MM-DD)	2012.06.06
V&V Edition	1
V&V Disposition and Status	OK
V&V Charge Time	4.75839998

### A.2 Comments

Joint Proposal: NOAO