

# V&V Reference Report

## L2 ASCDS Version : 8.4.4

Observation 8988 - L2 Version 2  
Chandra X-Ray Center

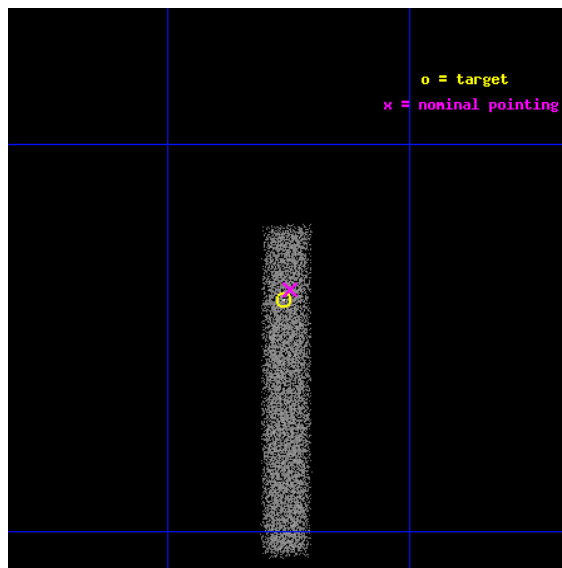
L2 Processing Date : May 10 2012

## Contents

<b>1</b>	<b>Front</b>	<b>2</b>
<b>2</b>	<b>OBI</b>	<b>3</b>
2.1	OBI . . . . .	3
2.1.1	Images . . . . .	3
2.1.2	Bias . . . . .	3
2.1.3	Parameters . . . . .	4
2.1.4	Events . . . . .	4
2.2	Compared Parameters . . . . .	5
2.3	Aspect . . . . .	6
2.4	Star Slots . . . . .	9
2.4.1	Slot 3 . . . . .	9
2.4.2	Slot 4 . . . . .	10
2.4.3	Slot 5 . . . . .	11
2.4.4	Slot 6 . . . . .	12
2.4.5	Slot 7 . . . . .	13
2.5	FID Slots . . . . .	14
2.5.1	Slot 0 . . . . .	14
2.5.2	Slot 1 . . . . .	15
2.5.3	Slot 2 . . . . .	16
<b>A</b>	<b>Summary</b>	<b>17</b>
A.1	Status . . . . .	17
A.2	Comments . . . . .	17

# 1 Front

seq_num	400839	Sequence number
obs_id	8988	Observation id
title	Following a black hole candidate X-ray transient to quiescence	Pro
observer	dr Peter Jonker	Principal investigator
object	H 1743-322	Source name
dtcycle	0	&#160
cycle	P	events from which exps? Prim/Second/Both
ra_targ	266.565	Observer's specified target RA [deg]
dec_targ	-32.2333	Observer's specified target Dec [deg]
ra_nom	266.56198597309	Nominal RA [deg]
dec_nom	-32.229200761248	Nominal Dec [deg]
roll_nom	90.075564119633	Nominal Roll [deg]
revision	2	Processing version of data
ontime	15142.399097443	Sum of GTIs [s]
livetime	13733.356700021	Livetime [s]
ontime7	15142.399097443	Sum of GTIs [s]
l2events	12338	Number of level 2 events

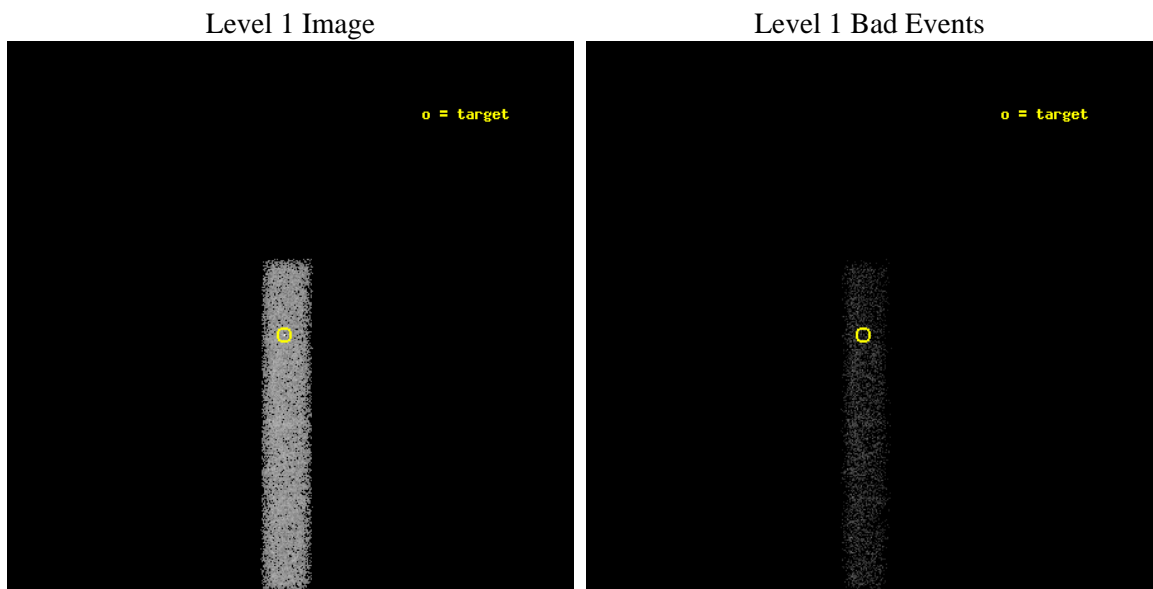




## 2 OBI

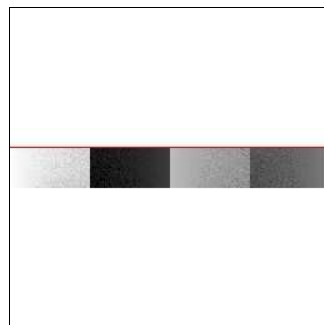
### 2.1 OBI

#### 2.1.1 Images



#### 2.1.2 Bias

Chip 7



### 2.1.3 Parameters

obi_num	0	Obi number	sched_exp_time	15000.000000	[s] Scheduled observation exposure time
ascdsver	8.4.4	Processing system revision	ontime	15142.399097443	Sum of GTIs [s]
caldsver	4.4.9	&#160	ontime7	15142.399097443	Sum of GTIs [s]
date	2012-05-10T23:18:21	Date and time of file creation	l1events	28629	Number of level 1 events
revision	2	Processing version of data			

### 2.1.4 Events

	<b>ccd 7</b>
level 1 events	28629
rejected events	15775
rejected %	55%

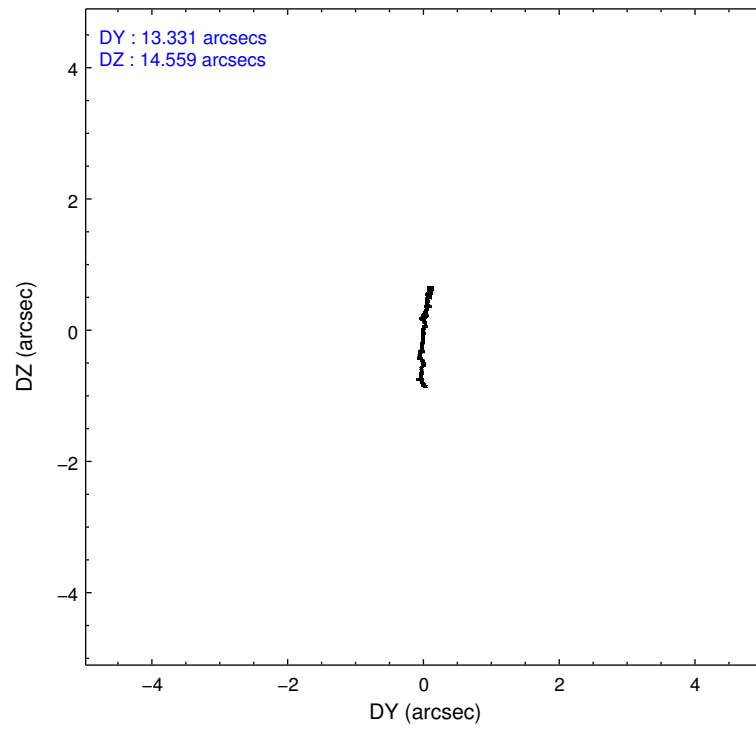
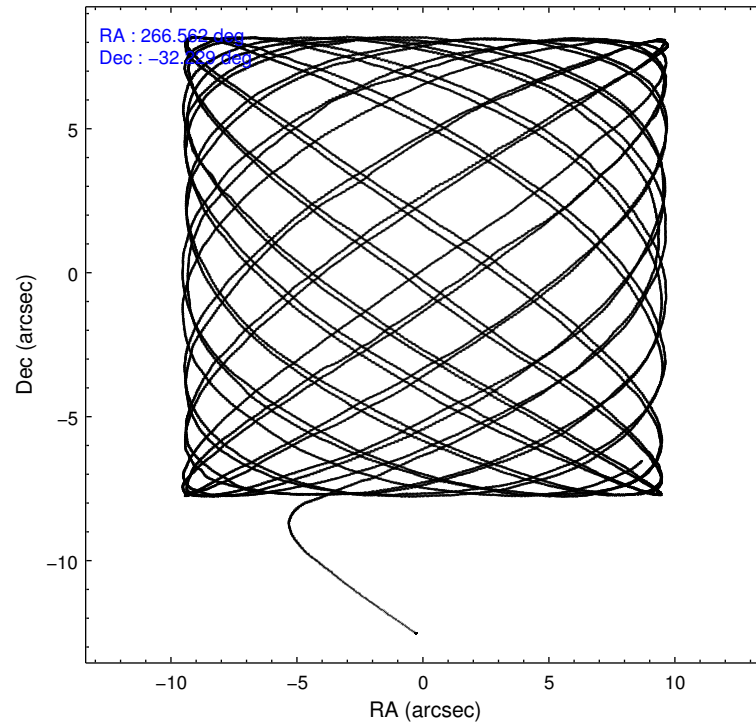
	<b>ccd 7</b>
grade 0 events	1418
	4%
grade 1 events	39
	0%
grade 2 events	2699
	9%
grade 3 events	1670
	5%
grade 4 events	1642
	5%
grade 5 events	2587
	9%
grade 6 events	6068
	21%
grade 7 events	12506
	43%

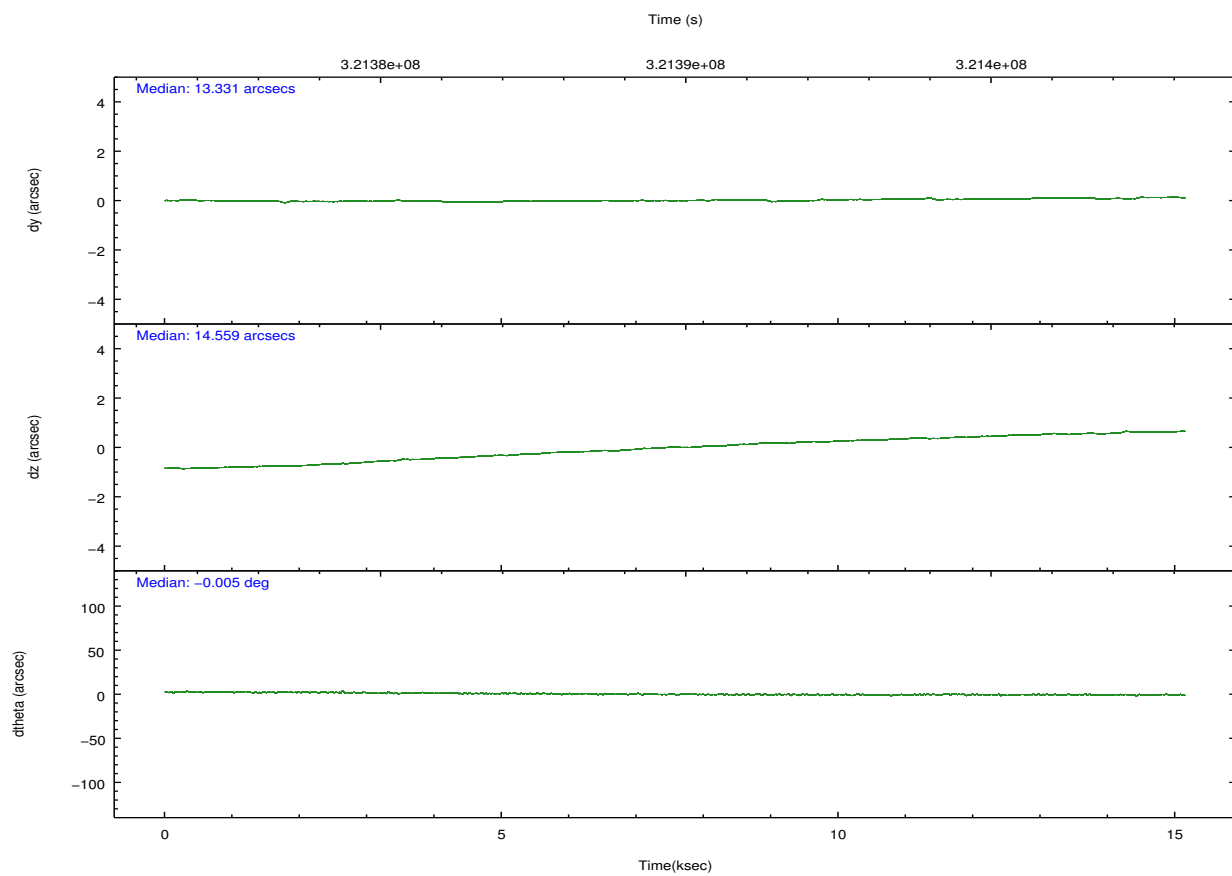
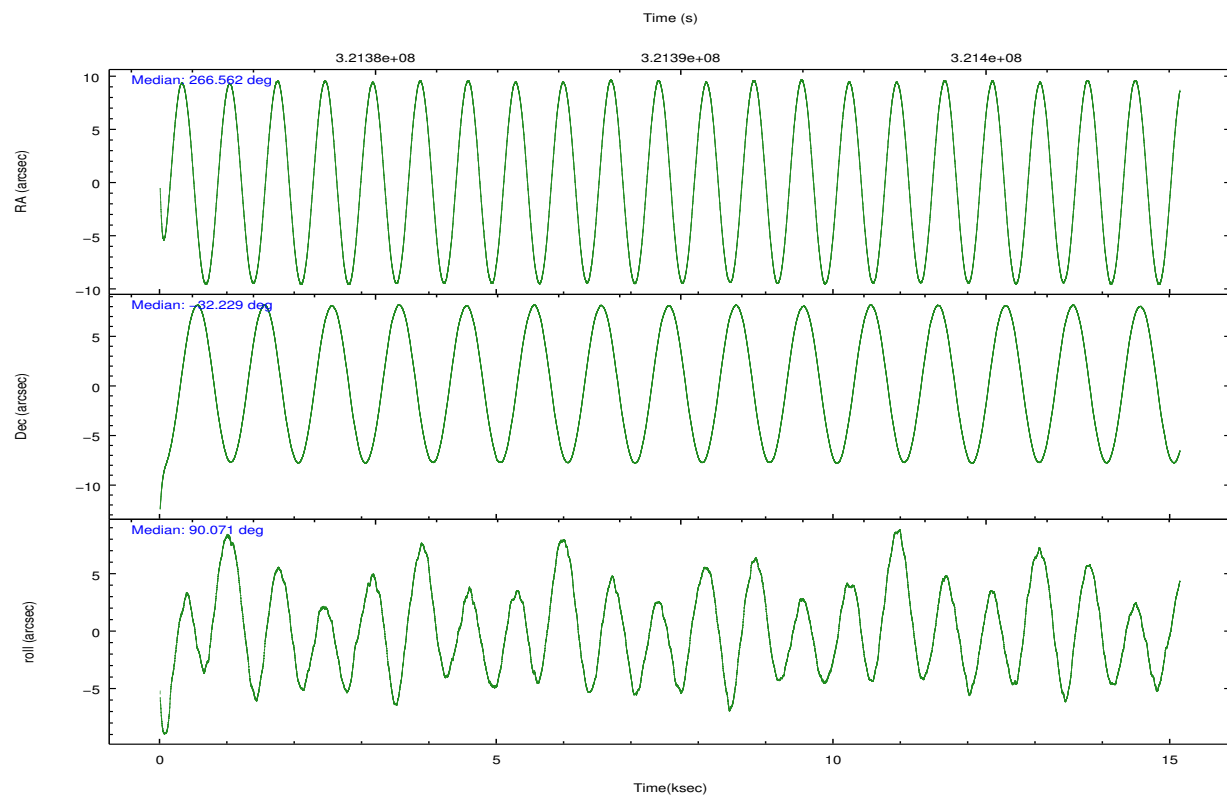
## 2.2 Compared Parameters

Parameter	Planned	Actual
Instrument	ACIS	ACIS
Detector	ACIS-7	ACIS-7
Grating	NONE	NONE
Data mode	FAINT	FAINT
Observation mode	POINTING	POINTING
[deg] Pointing RA	266.578567	266.5619859730853
[deg] Pointing Dec	-32.252647	-32.22920076124764
[deg] Pointing Roll	89.927782	90.07556411963257
[mm] SIM focus pos	-0.684267	-0.6828225247311905
[mm] SIM defocus	0	0.001444936568705701
[mm] SIM translation stage pos	-190.132523	-190.1425803651734
[mm] SIM translation stage offset	0	0.01005778216563158
[s] Observation start time (MET)	321382393.184000	321381388.8991
Observation start date	2008-03-08T16:52:08	2008-03-08T16:36:28
[s] Observation end time (MET)	321397393.184000	321398159.94992
Observation end date	2008-03-08T21:02:08	2008-03-08T21:15:59
Read mode	TIMED	TIMED

Parameter	Planned	Actual
Obspar format version number	7	7
Obspar file type	PREDICTED	ACTUAL
Obspar update status	NONE	UPDATED
Number of optional ACIS chips dropped	0	0
On-chip summing requested	N	N
Subarray requested	CUSTOM	1/8
Subarray start row	449	449
Subarray row count	128	128
Alternating exposures requested	N	N
[s] Primary exposure time	0.000000	0.4

## 2.3 Aspect



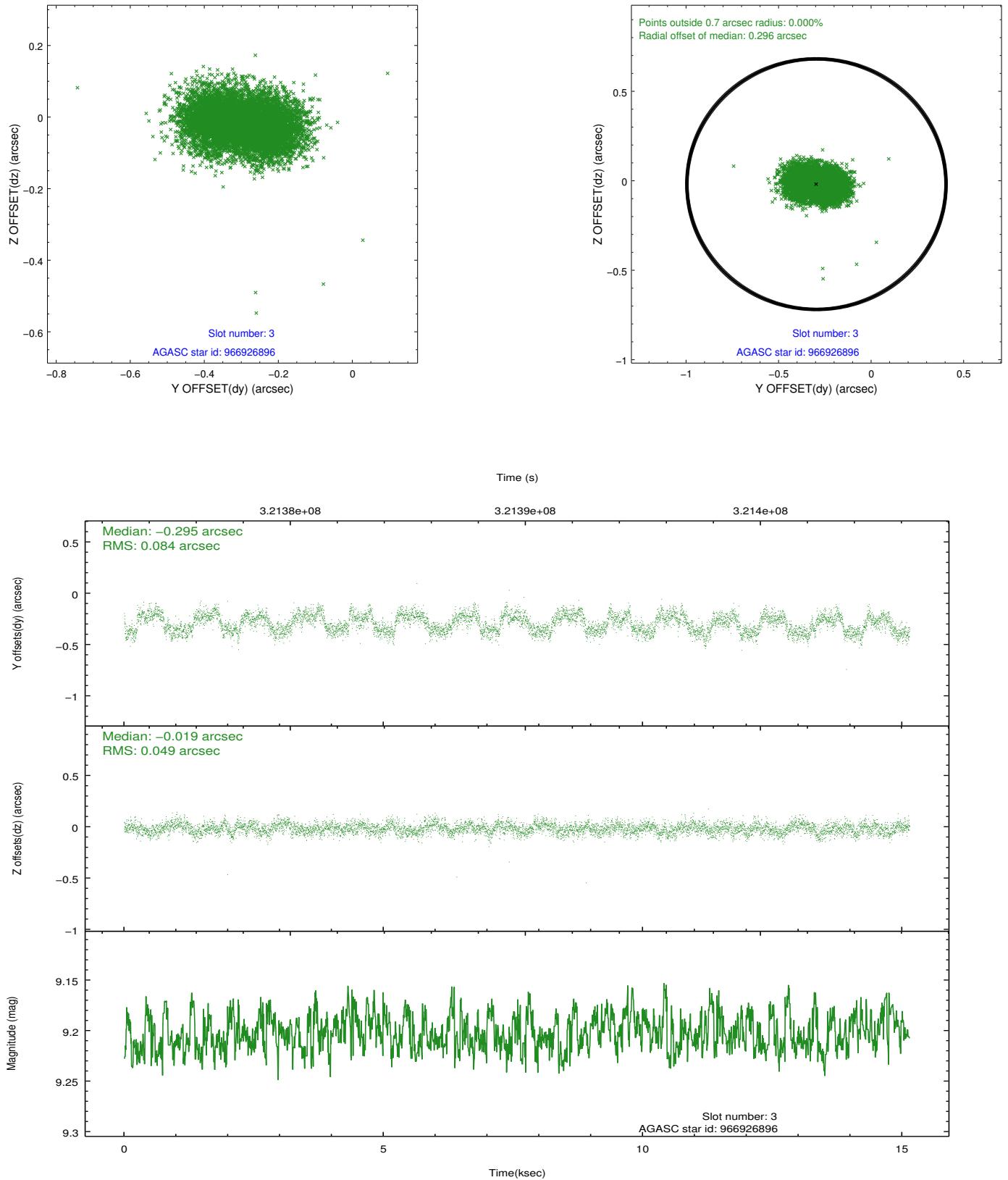


### Slot Statistics

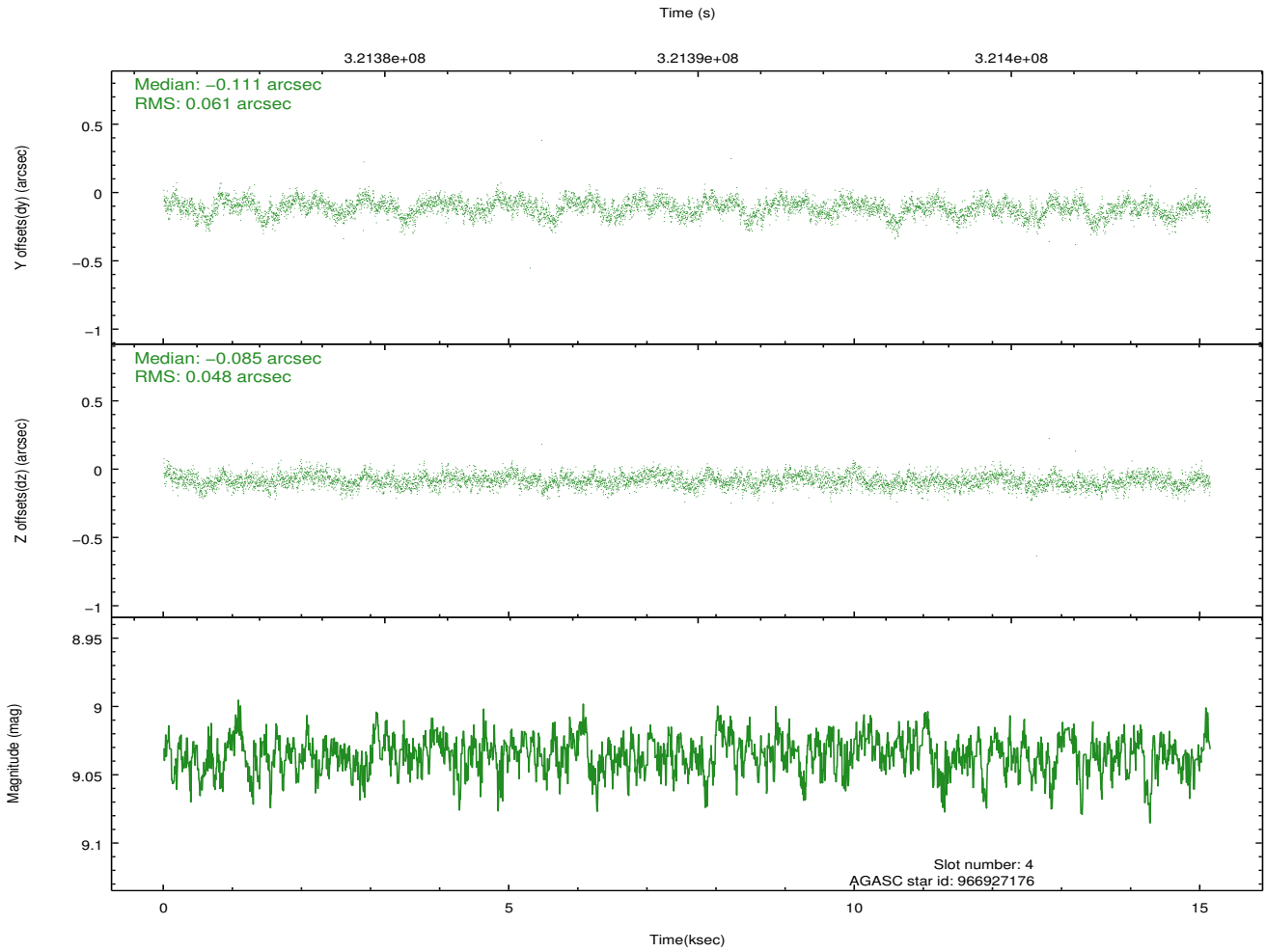
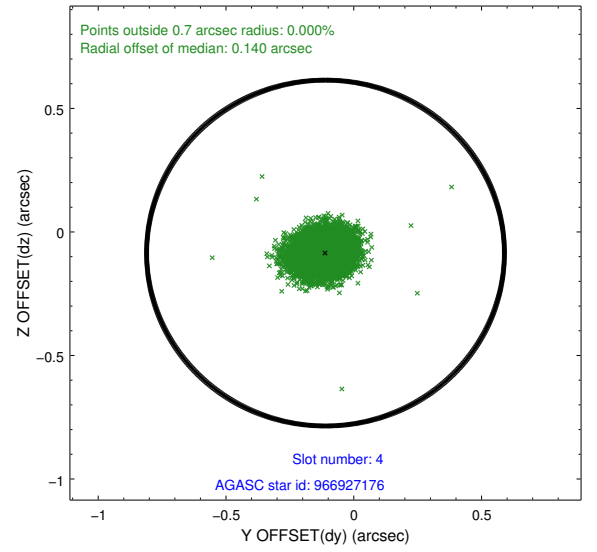
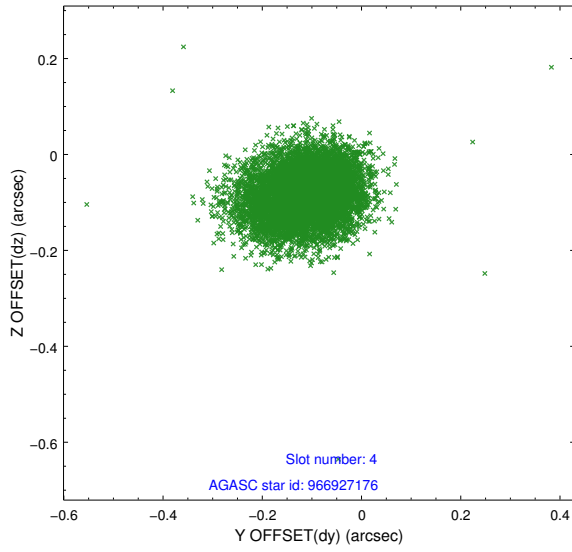
slot	status	id	mag	n_pts	med_dy	med_dz	dr1	dr2	ra	dec	mean_y	mean_z
0	FID	ACIS-S-2	7.10	3694	-0.058	-0.050	0.021	0.031	0.000000	0.000000	-766.30	-1735.87
1	FID	ACIS-S-4	7.19	3694	0.181	0.040	0.008	0.015	0.000000	0.000000	2147.05	172.42
2	FID	ACIS-S-5	7.22	3694	-0.157	0.017	0.018	0.026	0.000000	0.000000	-1818.89	166.36
3	GUIDE	966926896	9.20	7382	-0.295	-0.019	0.105	0.161	266.197771	-31.663459	2117.34	1169.65
4	GUIDE	966927176	9.03	7344	-0.111	-0.085	0.082	0.134	265.946853	-31.673679	2076.44	1938.36
5	GUIDE	967442688	8.38	7379	0.023	-0.123	0.062	0.100	266.096113	-32.373763	-440.83	1466.40
6	GUIDE	967446352	7.74	7383	0.216	0.221	0.066	0.104	267.069988	-32.671157	-1508.08	-1490.67
7	GUIDE	967448136	8.78	7383	0.171	0.005	0.091	0.146	265.900071	-32.546602	-1067.43	2057.33

## 2.4 Star Slots

### 2.4.1 Slot 3

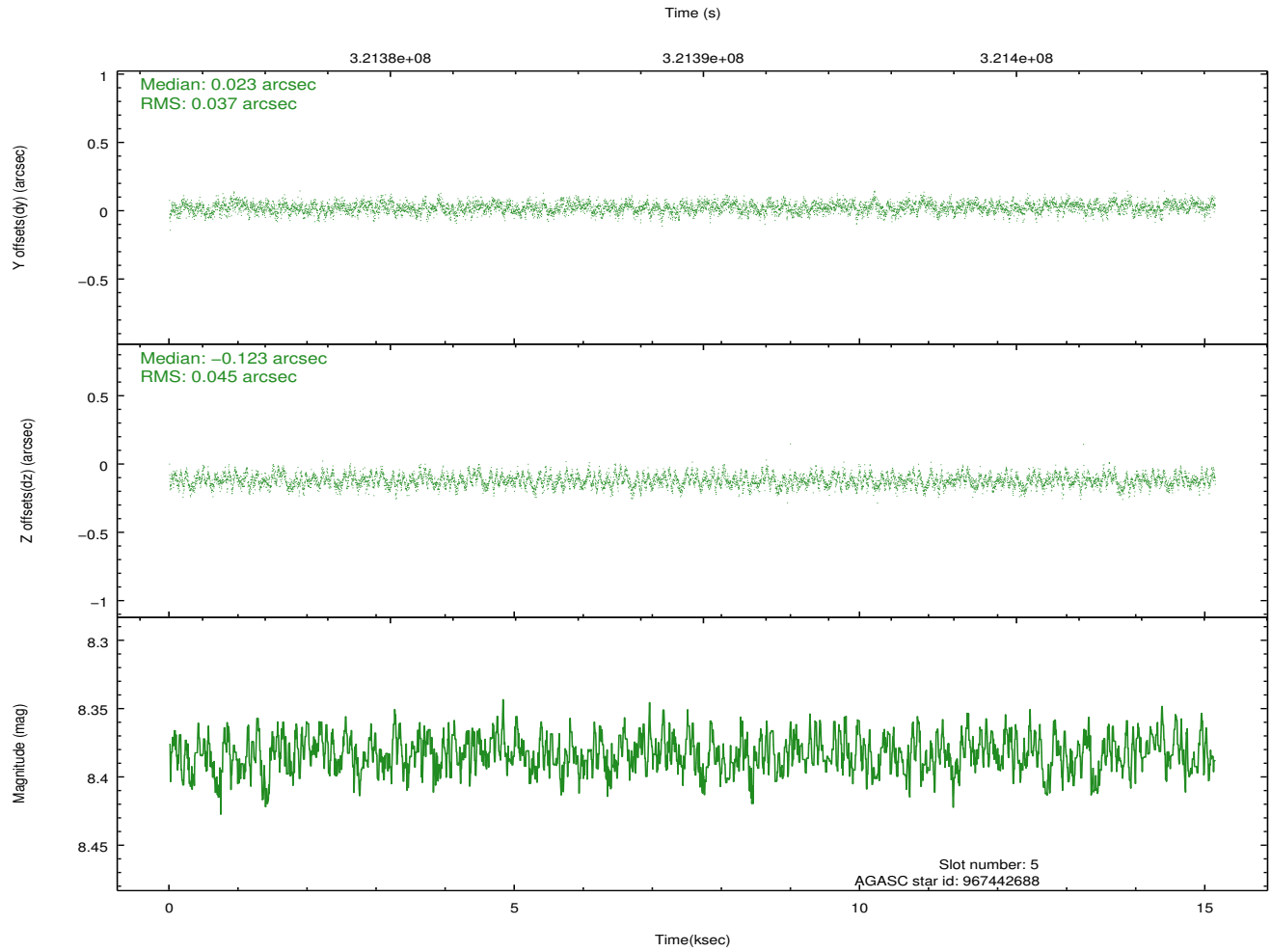
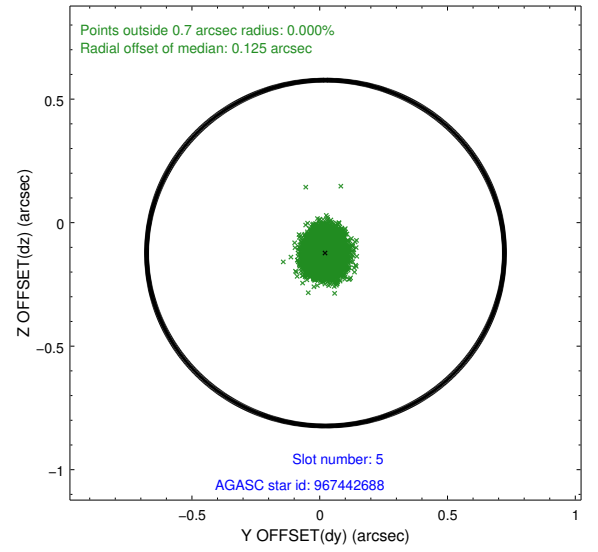
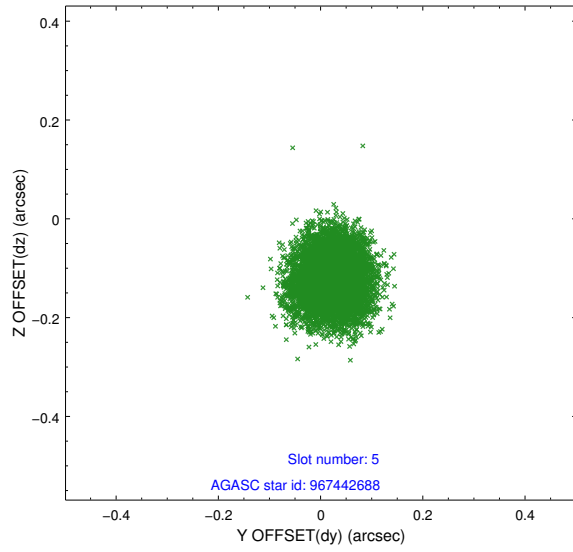


## 2.4.2 Slot 4

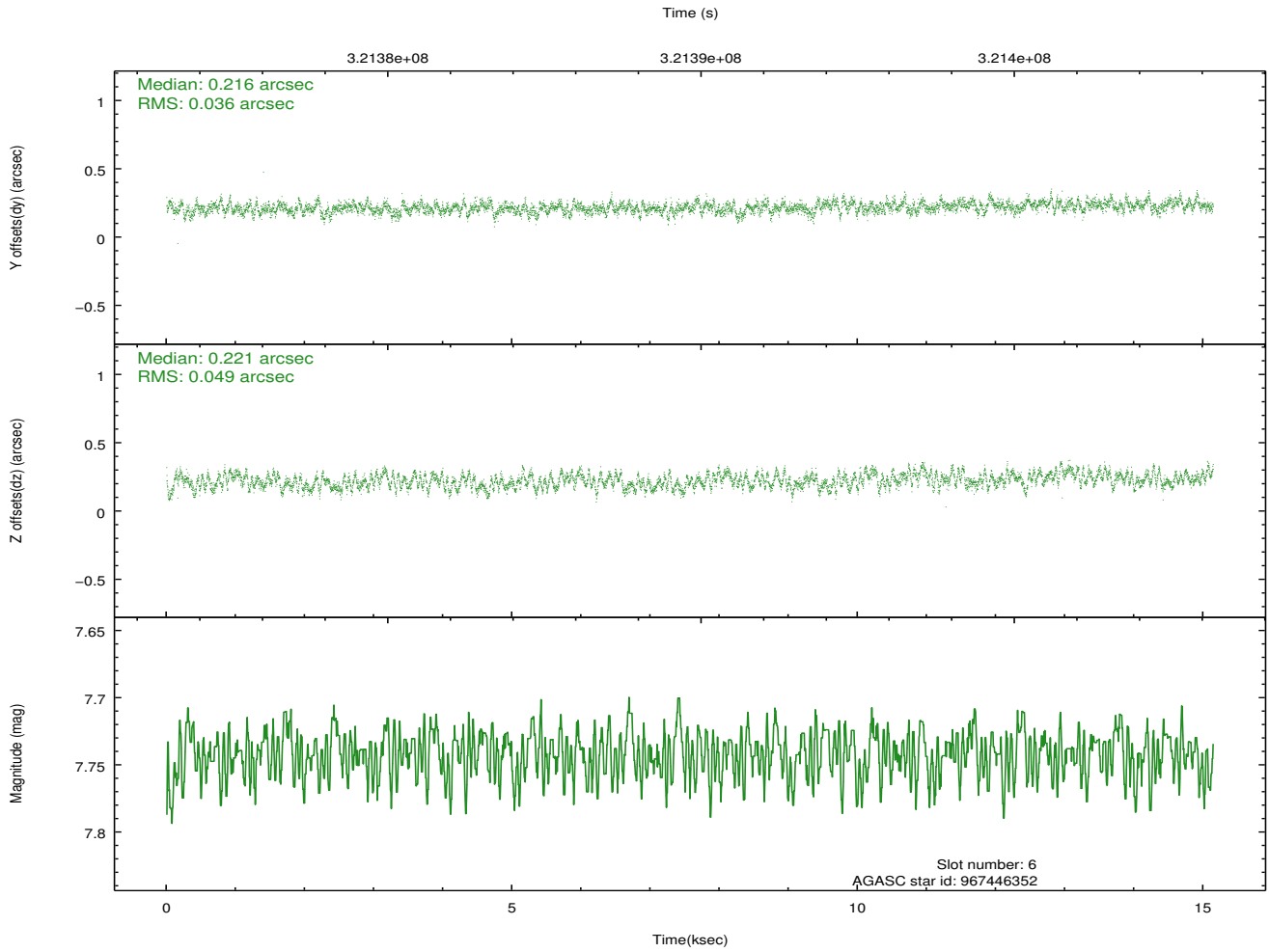
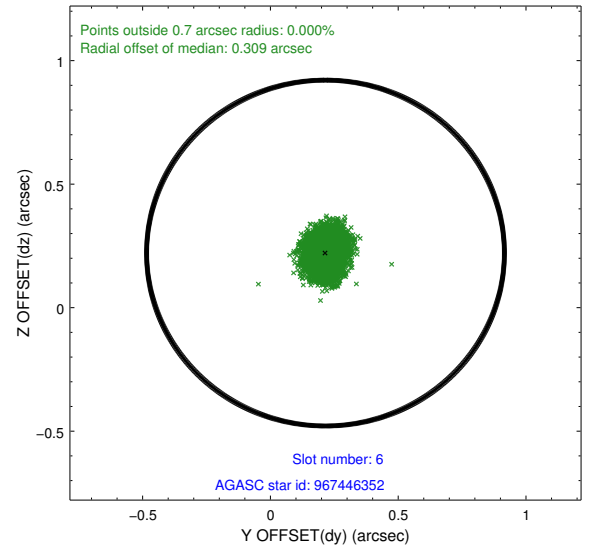
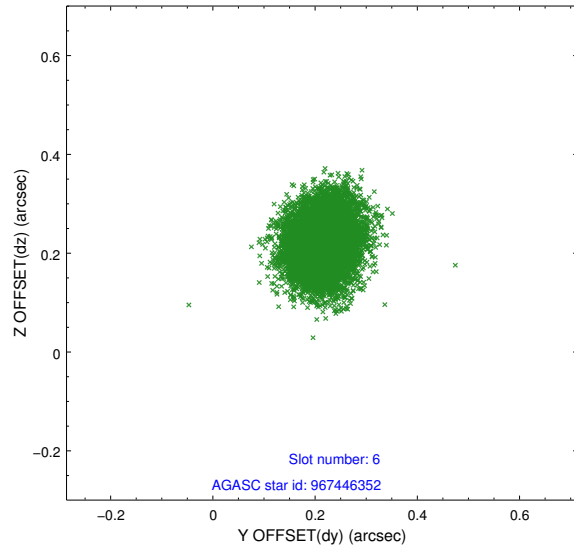




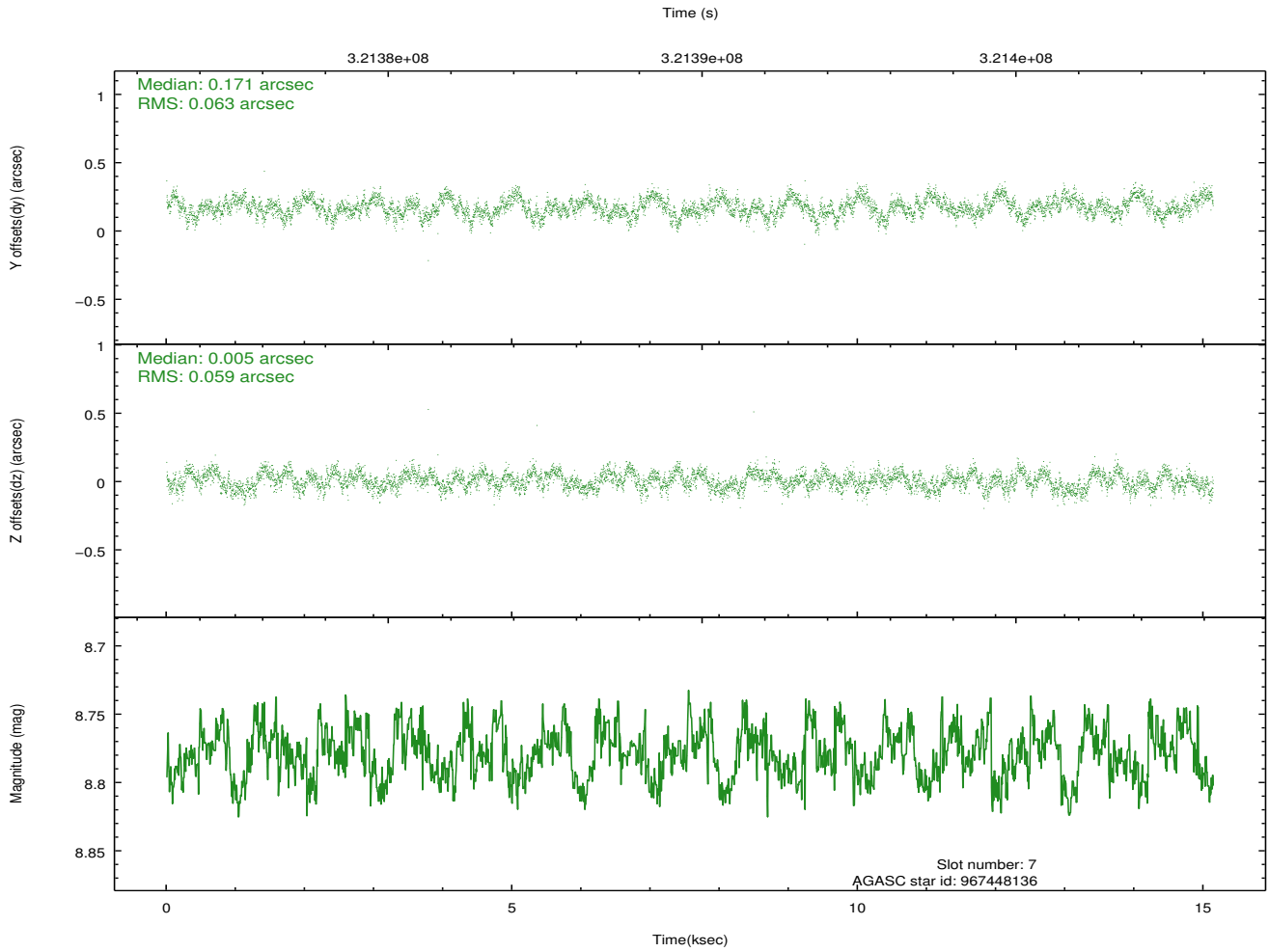
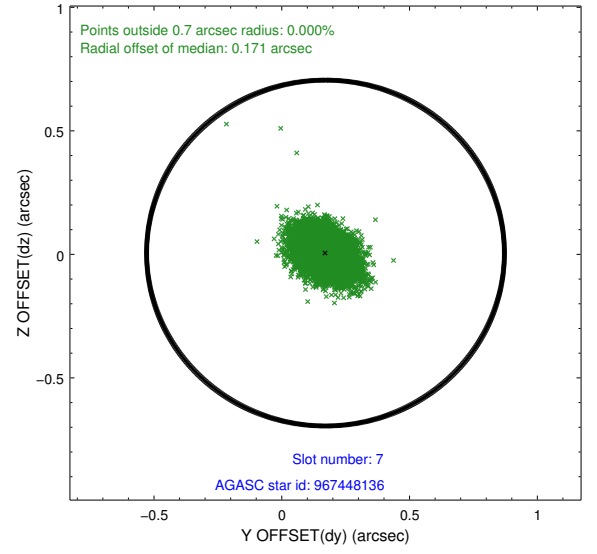
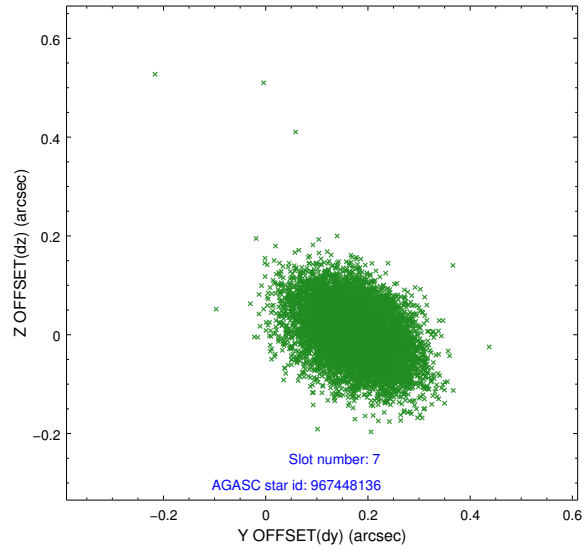
### 2.4.3 Slot 5



## 2.4.4 Slot 6

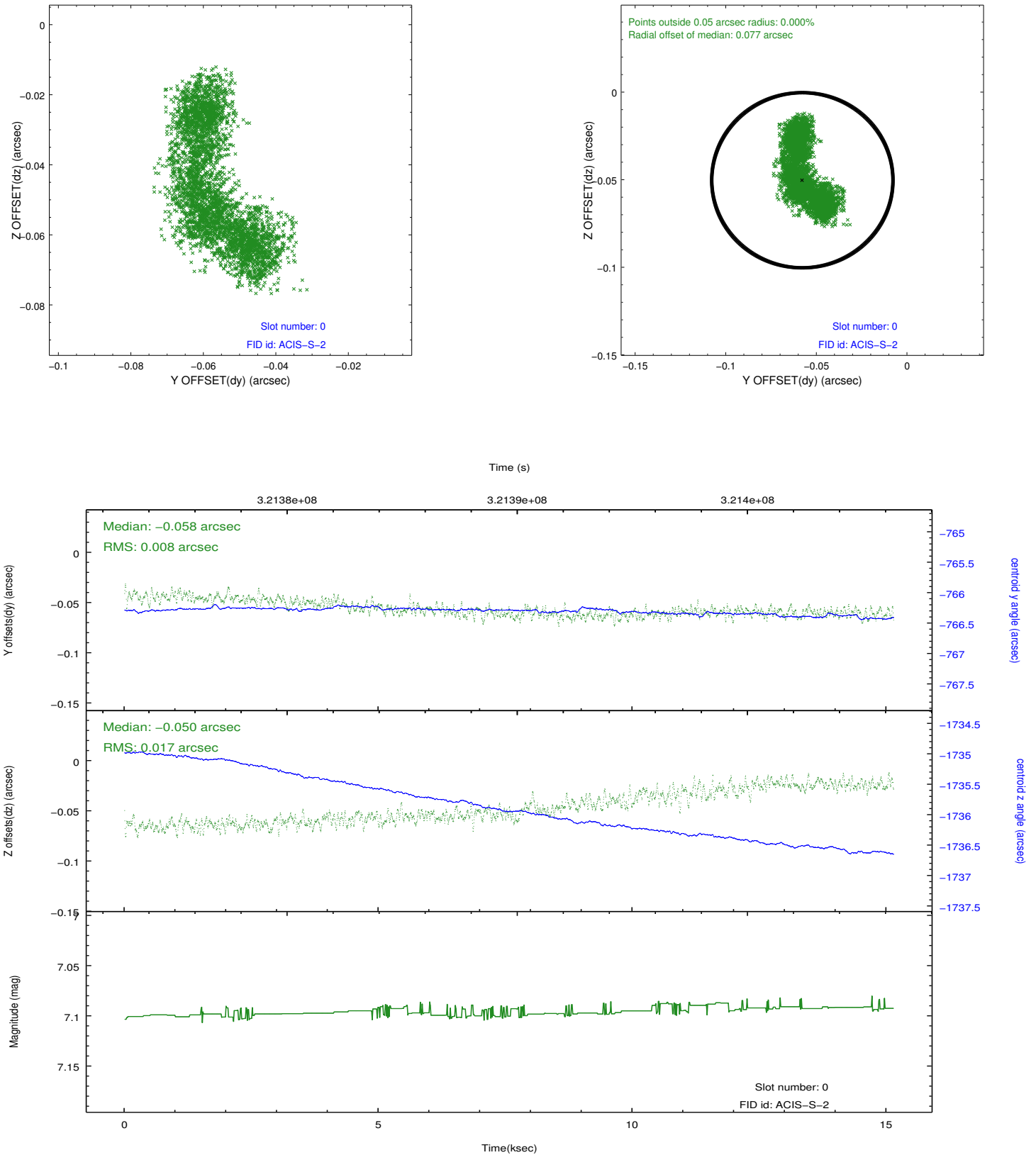


## 2.4.5 Slot 7

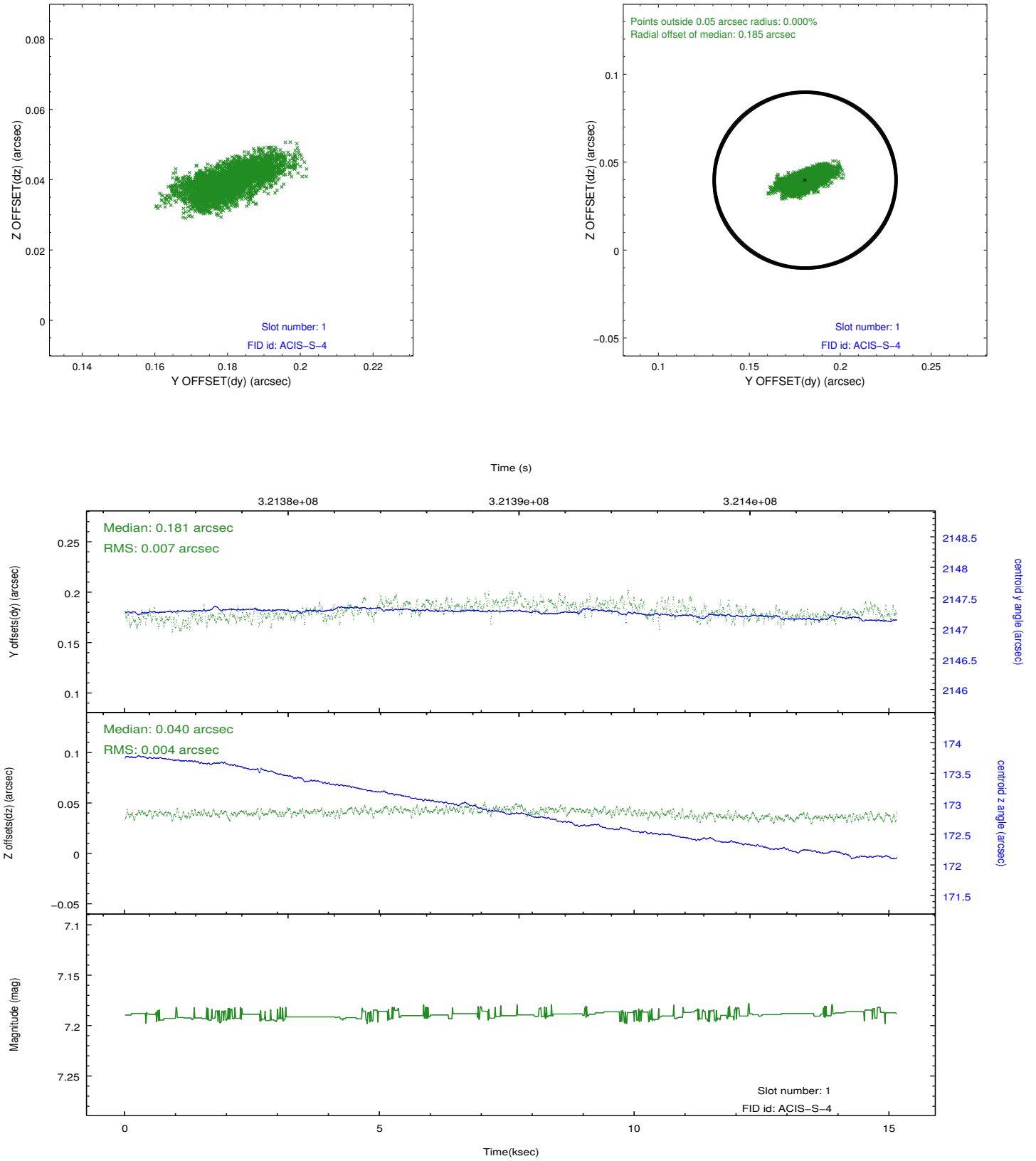


## 2.5 FID Slots

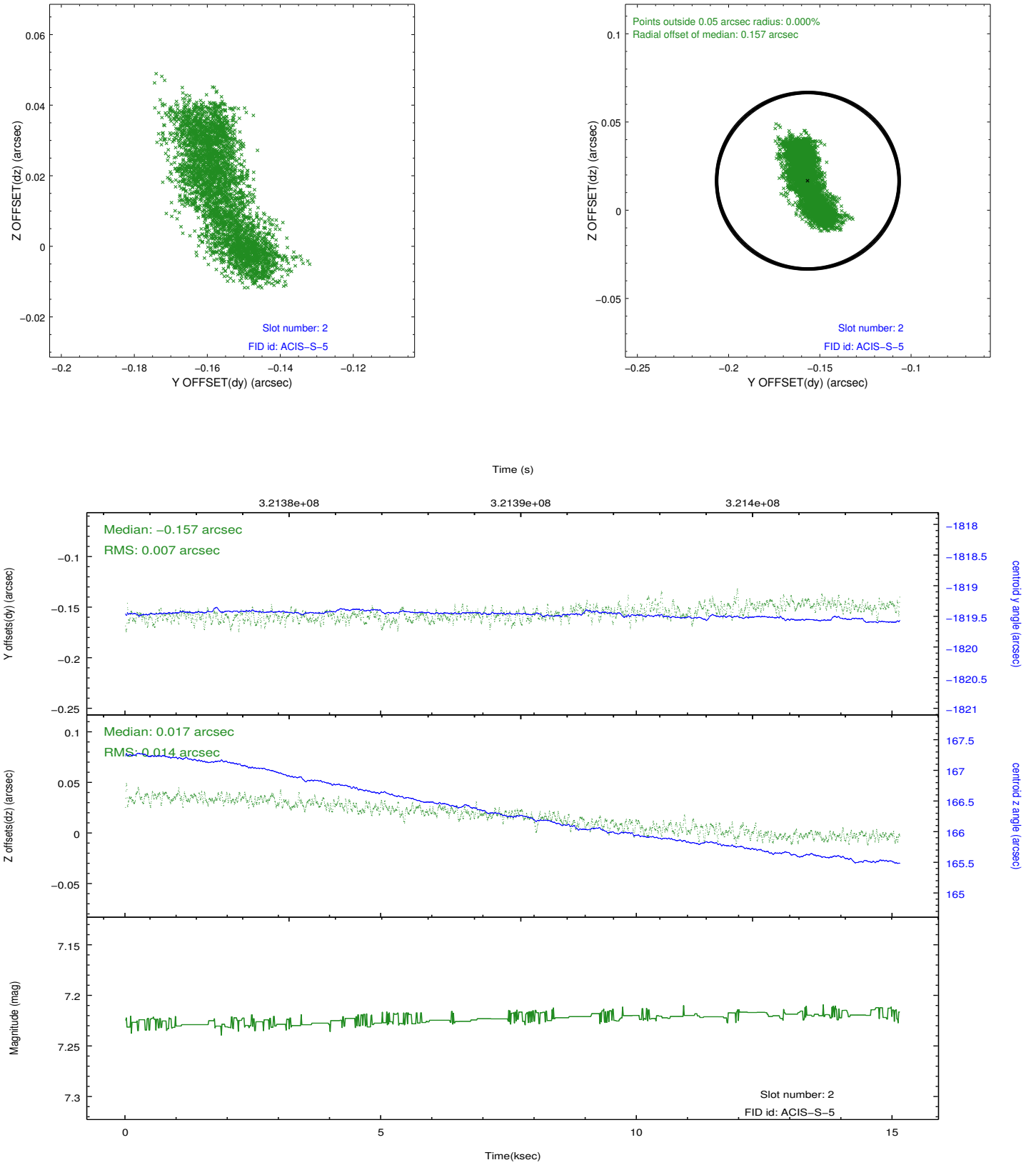
### 2.5.1 Slot 0



## 2.5.2 Slot 1



### 2.5.3 Slot 2



# A Summary

## A.1 Status

V&V Scientist	Jen Lauer
V&V Date (YYYY-MM-DD)	2012.05.14
V&V Edition	1
V&V Disposition and Status	OK
V&V Charge Time	15.142399

## A.2 Comments

Joint Proposal: NRAO. Monitor constraint met.