

V&V Reference Report

L2 ASCDS Version : 8.4.4

Observation 8946 - L2 Version 2
Chandra X-Ray Center

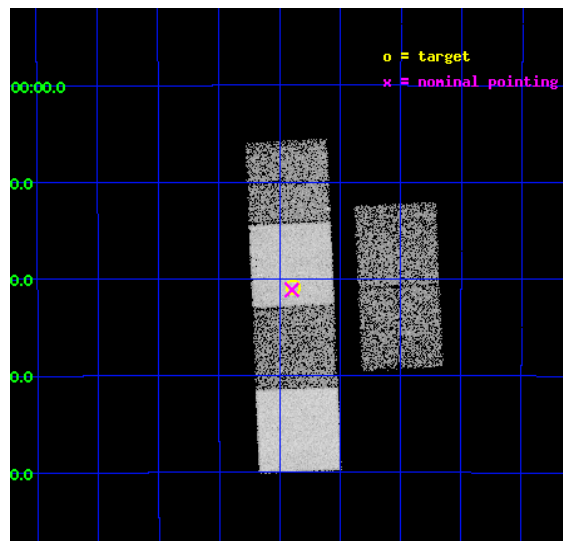
L2 Processing Date : May 23 2012

Contents

1	Front	2
2	OBI	3
2.1	OBI	3
2.1.1	Images	3
2.1.2	Bias	3
2.1.3	Parameters	4
2.1.4	Events	4
2.2	Compared Parameters	5
2.3	Aspect	6
2.4	Star Slots	9
2.4.1	Slot 3	9
2.4.2	Slot 4	10
2.4.3	Slot 5	11
2.4.4	Slot 6	12
2.4.5	Slot 7	13
2.5	FID Slots	14
2.5.1	Slot 0	14
2.5.2	Slot 1	15
2.5.3	Slot 2	16
A	Summary	17
A.1	Status	17
A.2	Comments	17

1 Front

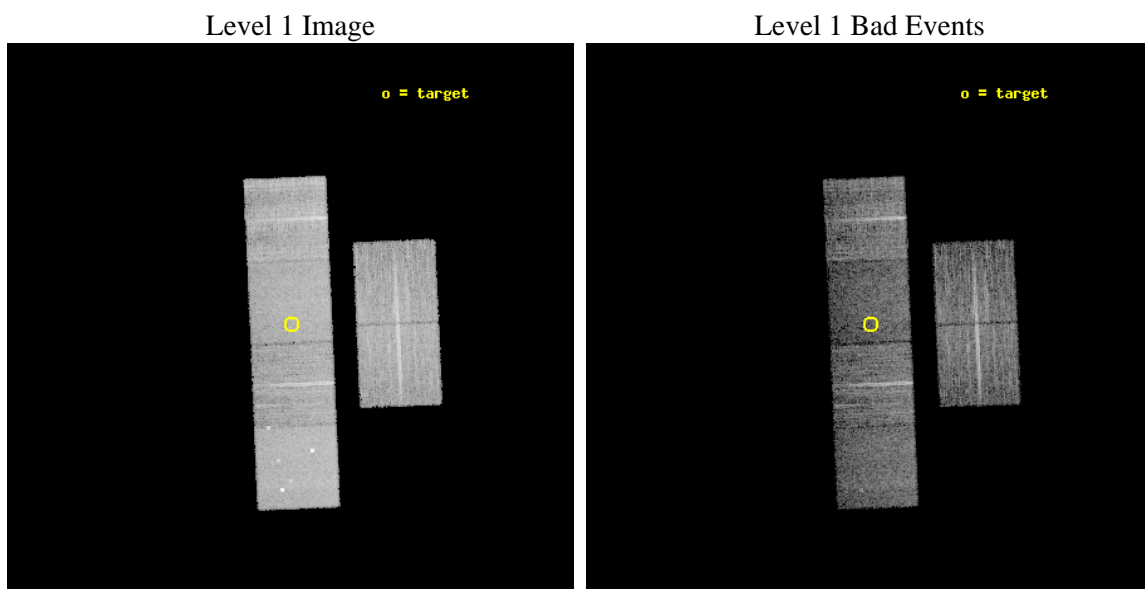
seq_num	300202	Sequence number
obs_id	8946	Observation id
title	A Chandra Legacy Survey of Dynamically Active Globular Clusters	Pr
observer	Prof. David Pooley	Principal investigator
object	NGC 6637	Source name
dtcycle	0	
cycle	P	events from which exps? Prim/Second/Both
ra_targ	277.846667	Observer's specified target RA [deg]
dec_targ	-32.348056	Observer's specified target Dec [deg]
ra_nom	277.8494292096	Nominal RA [deg]
dec_nom	-32.352254237986	Nominal Dec [deg]
roll_nom	267.50650020395	Nominal Roll [deg]
revision	2	Processing version of data
ontime	7452.7999722958	Sum of GTIs [s]
livetime	7358.4281315092	Livetime [s]
ontime2	7452.7999722958	Sum of GTIs [s]
ontime3	7449.5589919686	Sum of GTIs [s]
ontime5	7452.7999722958	Sum of GTIs [s]
ontime6	7452.7999722958	Sum of GTIs [s]
ontime7	7452.7999722958	Sum of GTIs [s]
ontime8	7452.7999722958	Sum of GTIs [s]
l2events	94134	Number of level 2 events



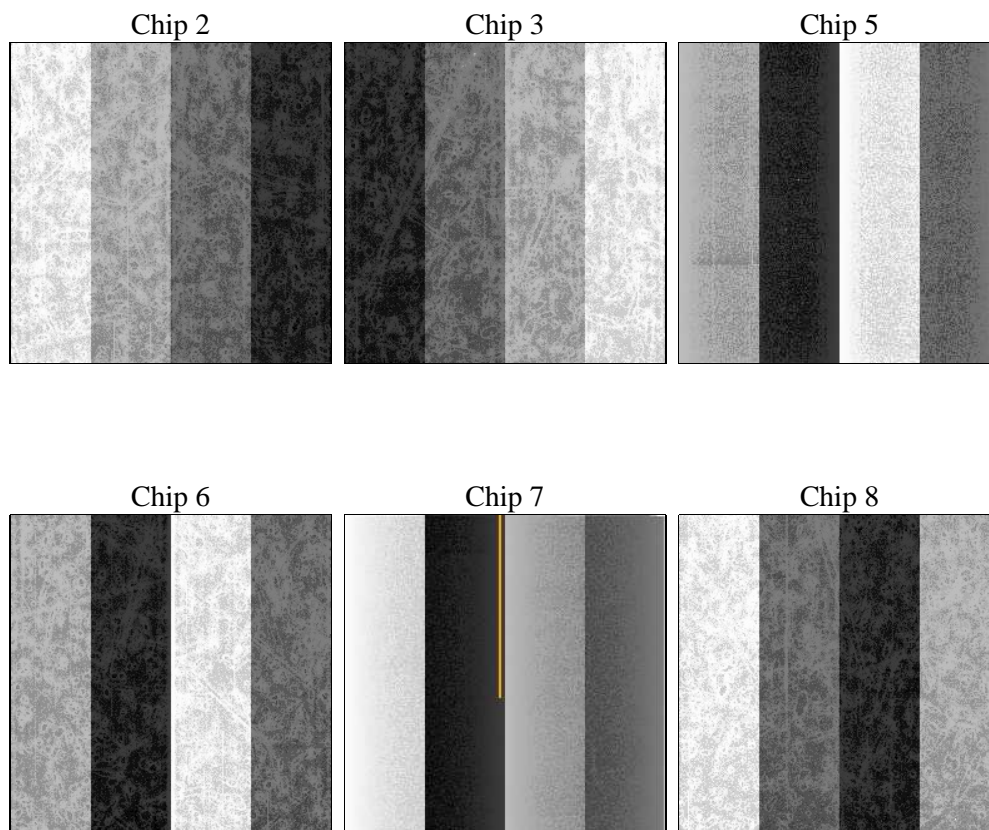
2 OBI

2.1 OBI

2.1.1 Images



2.1.2 Bias



2.1.3 Parameters

obi_num	0	Obi number	sched_exp_time	7300.000000	[s] Scheduled observation exposure time
ascdsver	8.4.4	Processing system revision	ontime	7452.7999722958	Sum of GTIs [s]
caldbver	4.4.9	 	ontime2	7452.7999722958	Sum of GTIs [s]
date	2012-05-23T11:54:01	Date and time of file creation	ontime3	7449.5589919686	Sum of GTIs [s]
revision	2	Processing version of data	ontime5	7452.7999722958	Sum of GTIs [s]
			ontime6	7452.7999722958	Sum of GTIs [s]
			ontime7	7452.7999722958	Sum of GTIs [s]
			ontime8	7452.7999722958	Sum of GTIs [s]
			l1events	421048	Number of level 1 events

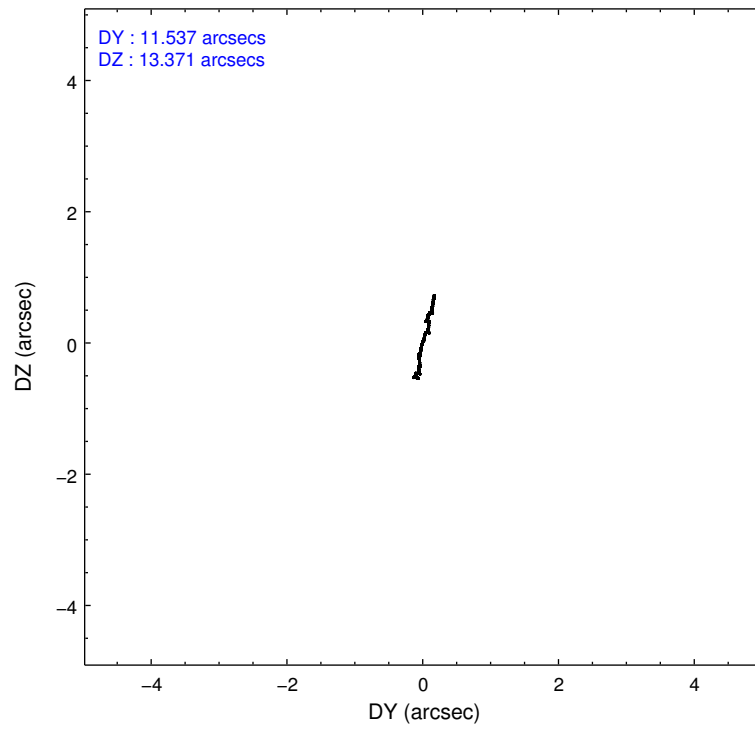
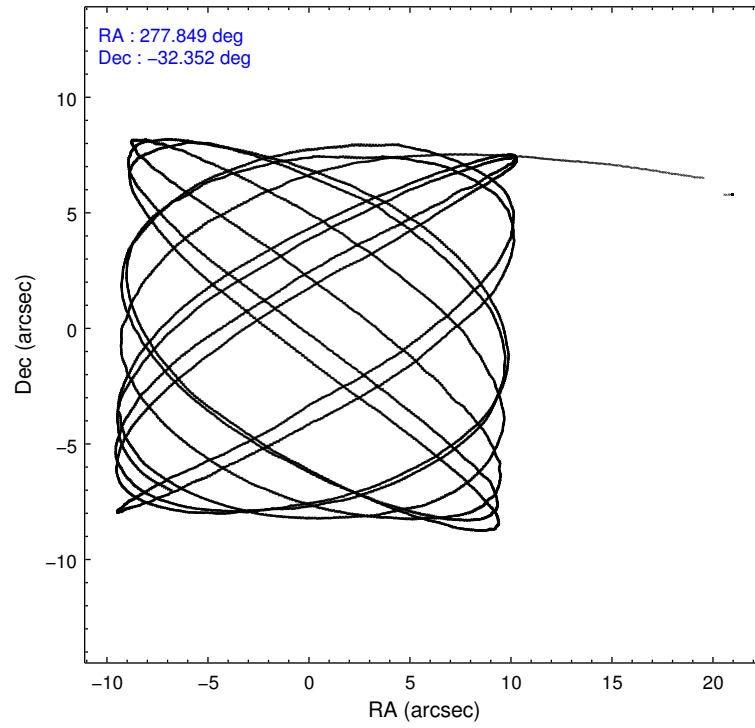
2.1.4 Events

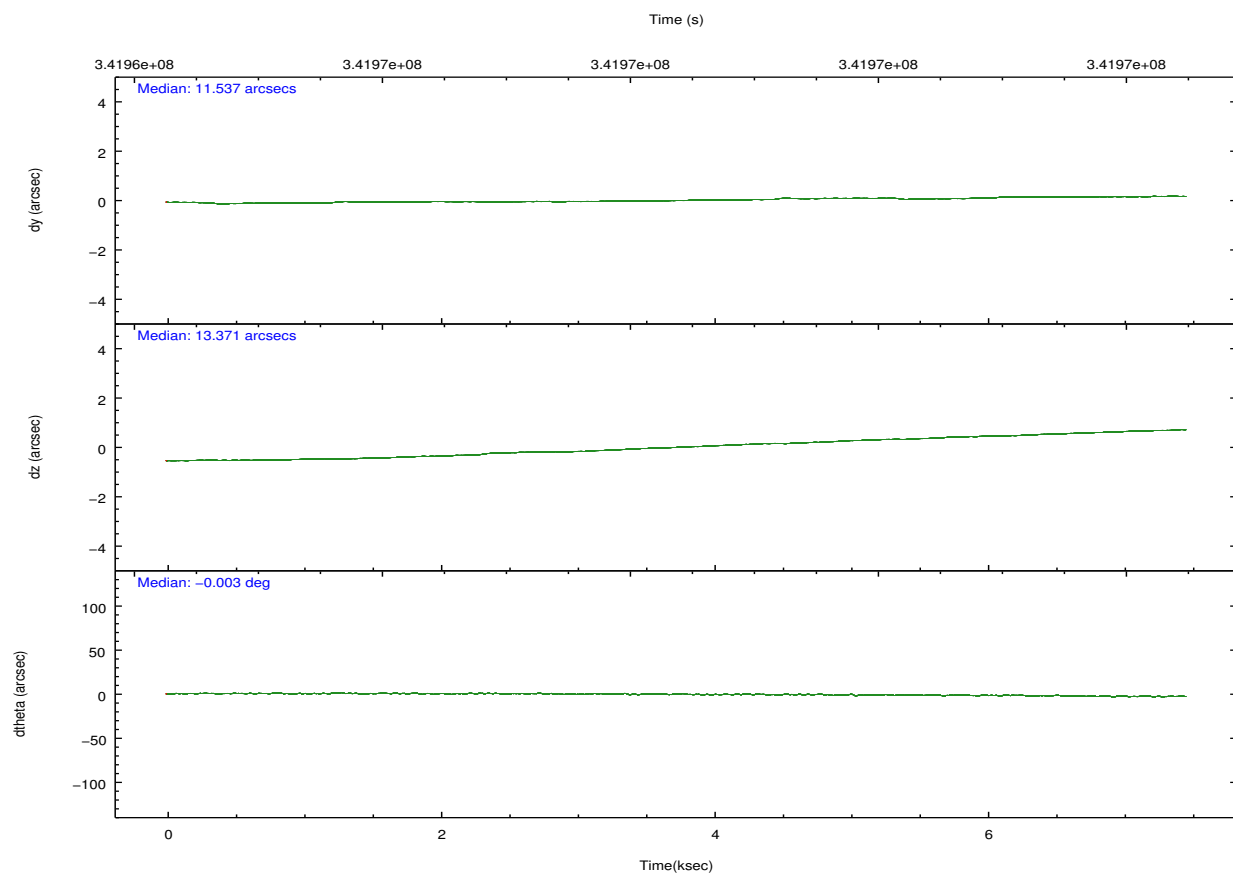
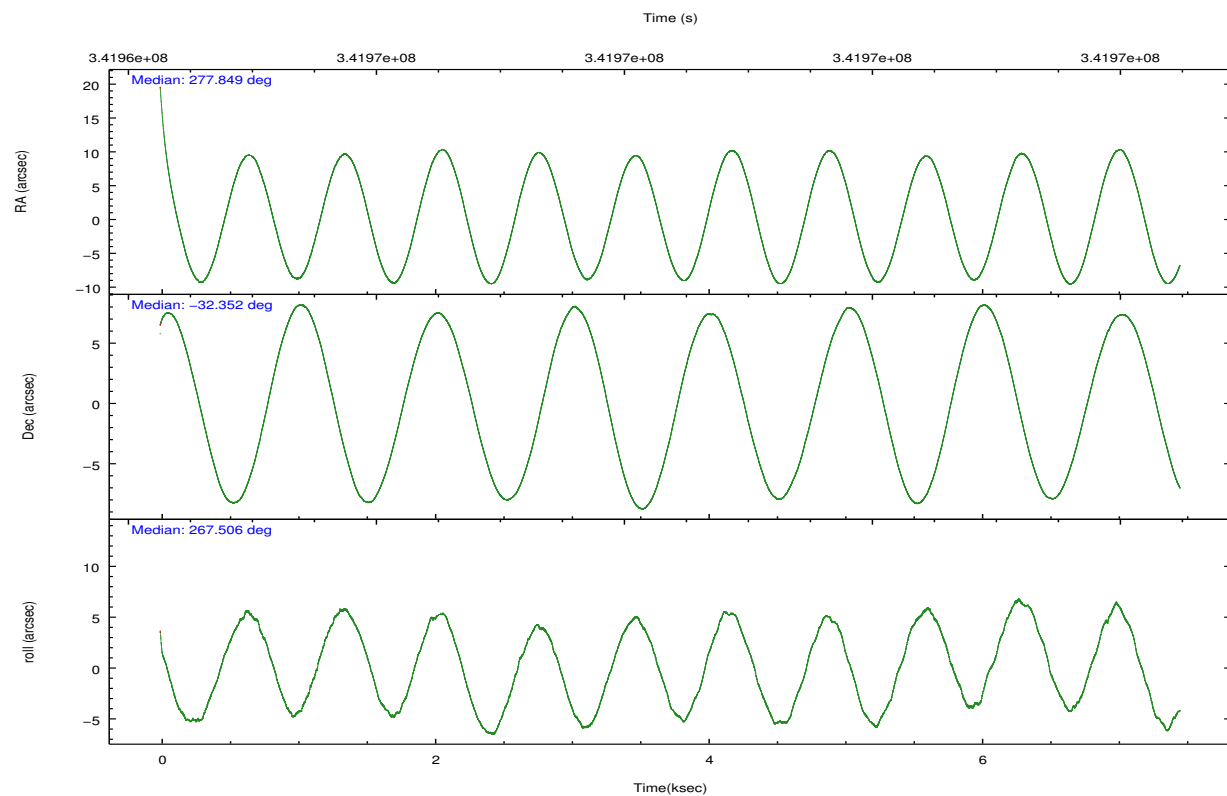
	ccd 2	ccd 3	ccd 5	ccd 6	ccd 7	ccd 8		ccd 2	ccd 3	ccd 5	ccd 6	ccd 7	ccd 8
level 1 events	64418	59192	88795	60481	70008	78154	grade 0 events	2538	2229	6368	2611	3445	5686
rejected events	58127	53304	43660	53709	37910	59473		3%	3%	7%	4%	4%	7%
rejected %	90%	90%	49%	88%	54%	76%	grade 1 events	50	33	261	32	106	70
								0%	0%	0%	0%	0%	0%
							grade 2 events	1541	1221	13377	1440	6707	4478
								2%	2%	15%	2%	9%	5%
							grade 3 events	622	699	1893	723	3009	2068
								0%	1%	2%	1%	4%	2%
							grade 4 events	604	645	1832	704	3000	1978
								0%	1%	2%	1%	4%	2%
							grade 5 events	2062	2483	6809	2496	7379	3607
								3%	4%	7%	4%	10%	4%
							grade 6 events	1110	1220	22558	1416	16544	4923
								1%	2%	25%	2%	23%	6%
							grade 7 events	55891	50662	35697	51059	29818	55344
								86%	85%	40%	84%	42%	70%

2.2 Compared Parameters

Parameter	Planned	Actual	Parameter	Planned	Actual
Instrument	ACIS	ACIS	Obspar format version number	7	7
Detector	ACIS-235678	ACIS-235678	Obspar file type	PREDICTED	ACTUAL
Grating	NONE	NONE	Obspar update status	NONE	UPDATED
Data mode	VFAINT	VFAINT	CCD I0 on	N	N
Observation mode	POINTING	POINTING	CCD I1 on	N	N
[deg] Pointing RA	277.834129	277.8494292095956	CCD I2 on	O1	Y
[deg] Pointing Dec	-32.328218	-32.3522542379856	CCD I3 on	O2	Y
[deg] Pointing Roll	267.341699	267.5065002039541	CCD S0 on	N	N
[mm] SIM focus pos	-0.684267	-0.6828225247311905	CCD S1 on	Y	Y
[mm] SIM defocus	0	0.001444936568705701	CCD S2 on	Y	Y
[mm] SIM translation stage pos	-190.132523	-190.1425803651734	CCD S3 on	Y	Y
[mm] SIM translation stage offset	0	0.01005778216563158	CCD S4 on	Y	Y
[s] Observation start time (MET)	341964784.184000	341963651.56626	CCD S5 on	N	N
Observation start date	2008-11-01T22:11:59	2008-11-01T21:54:11	Number of optional ACIS chips dropped	0	0
[s] Observation end time (MET)	341972084.184000	341972399.9417	On-chip summing requested	N	N
Observation end date	2008-11-02T00:13:39	2008-11-02T00:19:59	Subarray requested	NONE	NONE
Read mode	TIMED	TIMED	Alternating exposures requested	N	N
			[s] Primary exposure time	0.000000	3.2

2.3 Aspect



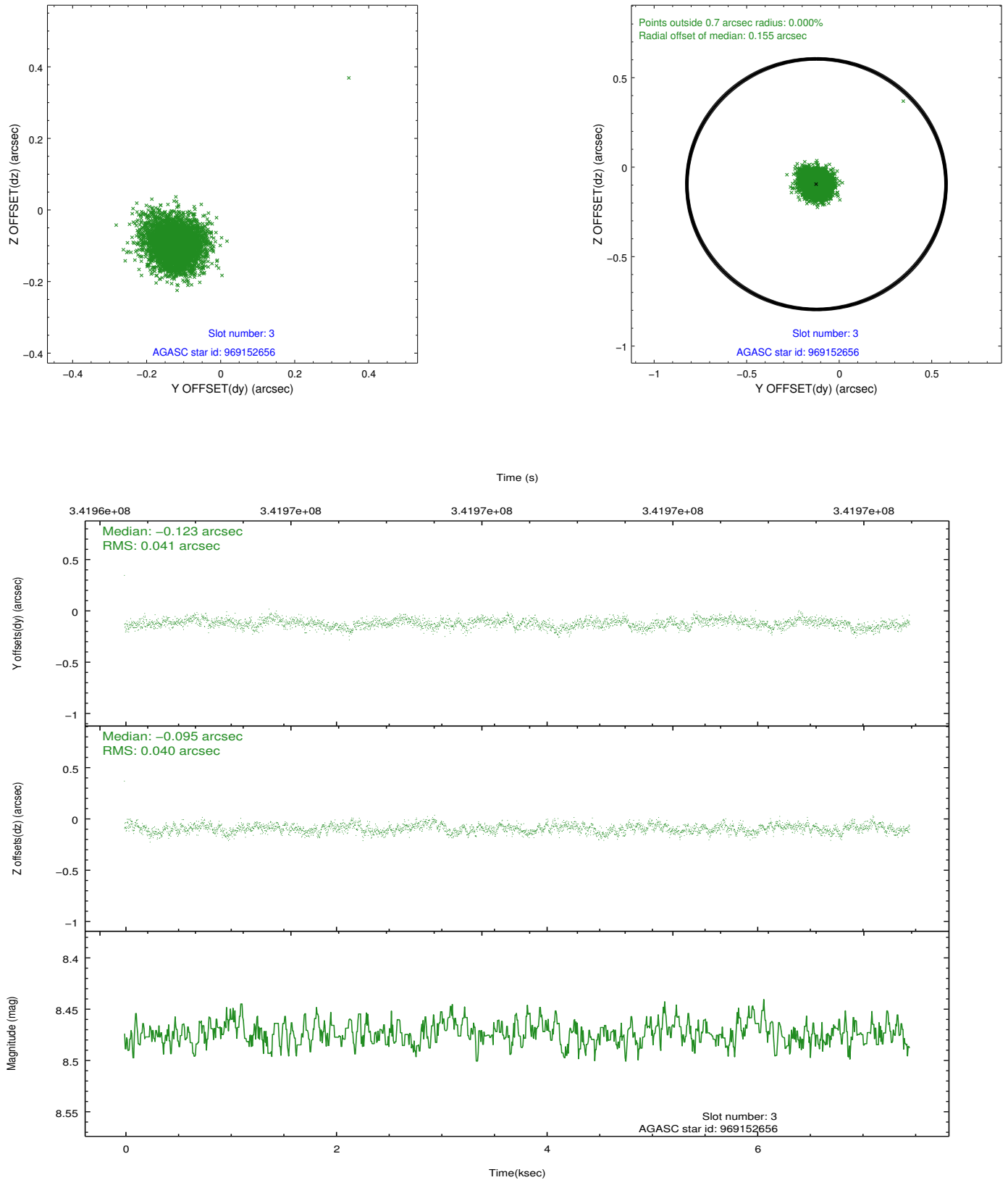


Slot Statistics

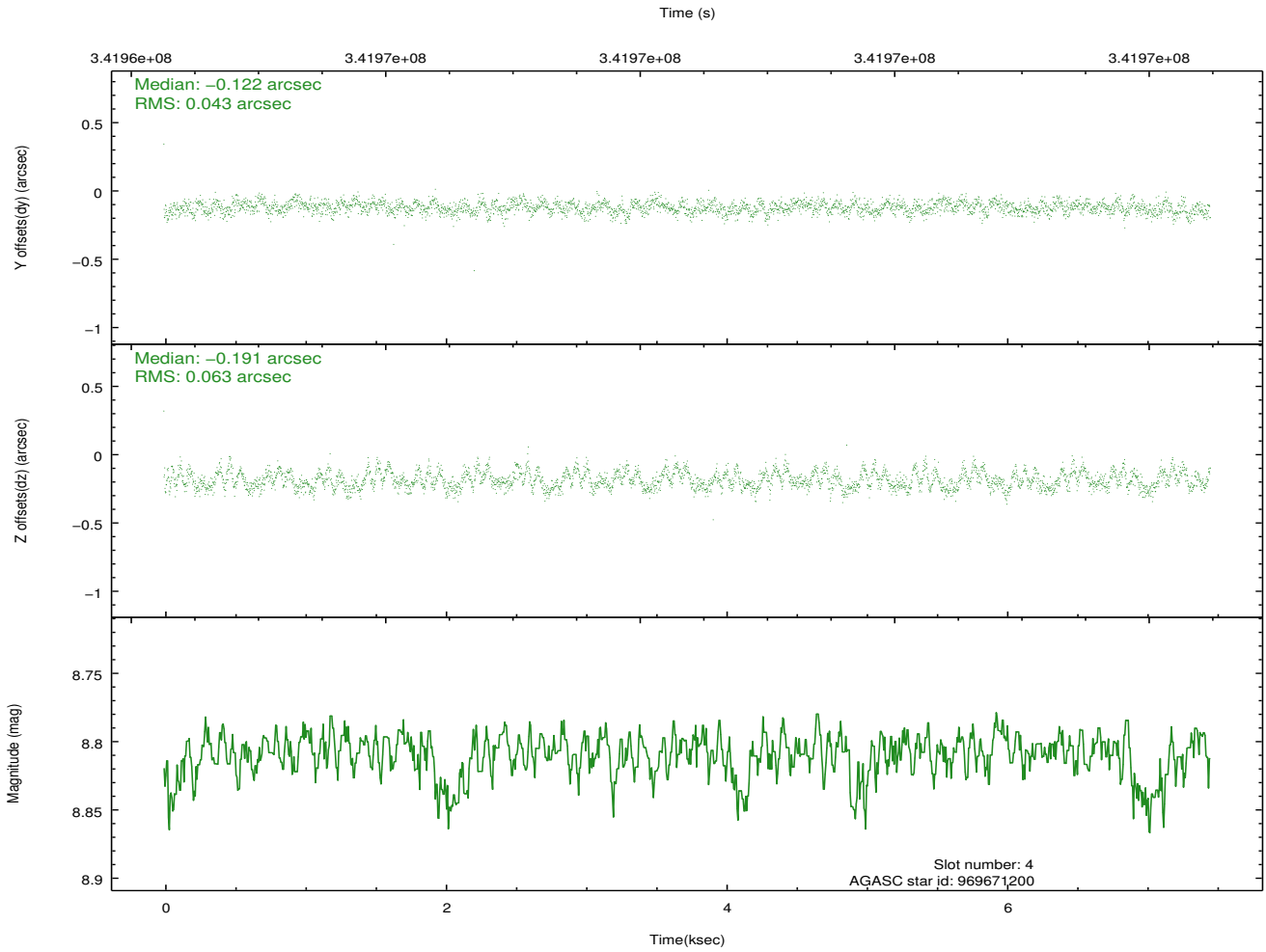
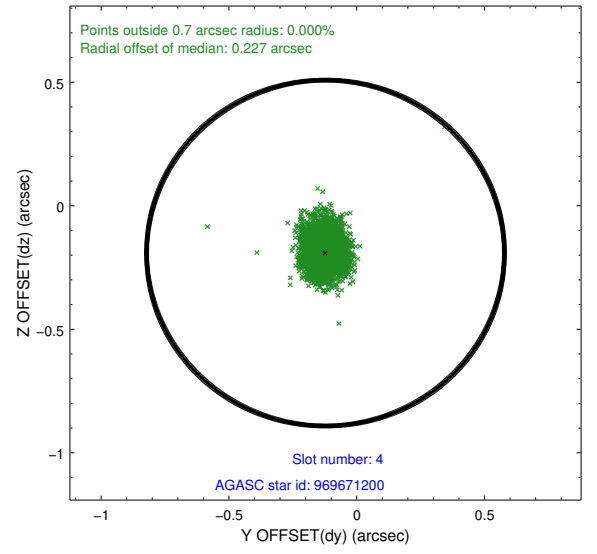
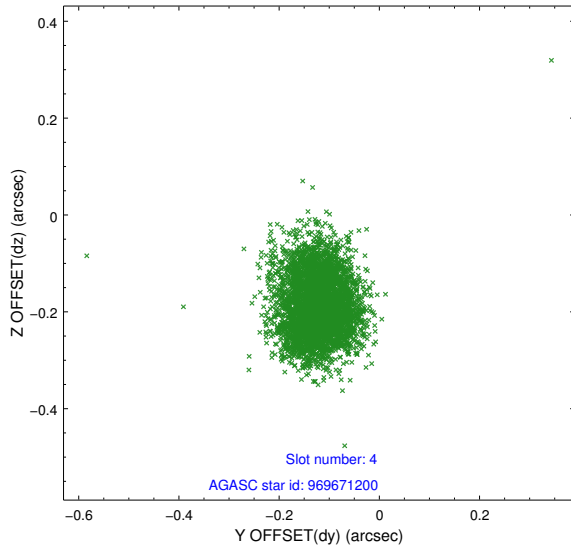
slot	status	id	mag	n_pts	med_dy	med_dz	dr1	dr2	ra	dec	mean_y	mean_z
0	FID	ACIS-S-2	6.93	1820	-0.021	-0.025	0.009	0.015	0.000000	0.000000	-764.47	-1734.69
1	FID	ACIS-S-4	7.03	1820	0.102	0.017	0.009	0.016	0.000000	0.000000	2148.60	173.01
2	FID	ACIS-S-5	7.06	1820	-0.112	0.016	0.007	0.012	0.000000	0.000000	-1816.40	167.60
3	GUIDE	969152656	8.47	3633	-0.123	-0.095	0.061	0.098	277.510274	-31.746264	-2044.71	-1087.52
4	GUIDE	969671200	8.81	3632	-0.122	-0.191	0.080	0.127	277.159614	-31.885575	-1489.62	-2133.38
5	GUIDE	969671576	7.92	3639	0.156	0.053	0.058	0.099	278.098202	-32.939052	2160.75	898.78
6	GUIDE	969671736	7.55	3639	0.104	0.163	0.066	0.112	278.521339	-32.961135	2187.60	2180.27
7	GUIDE	969153128	9.02	3634	-0.023	0.068	0.076	0.124	277.829581	-31.673113	-2354.22	-122.45

2.4 Star Slots

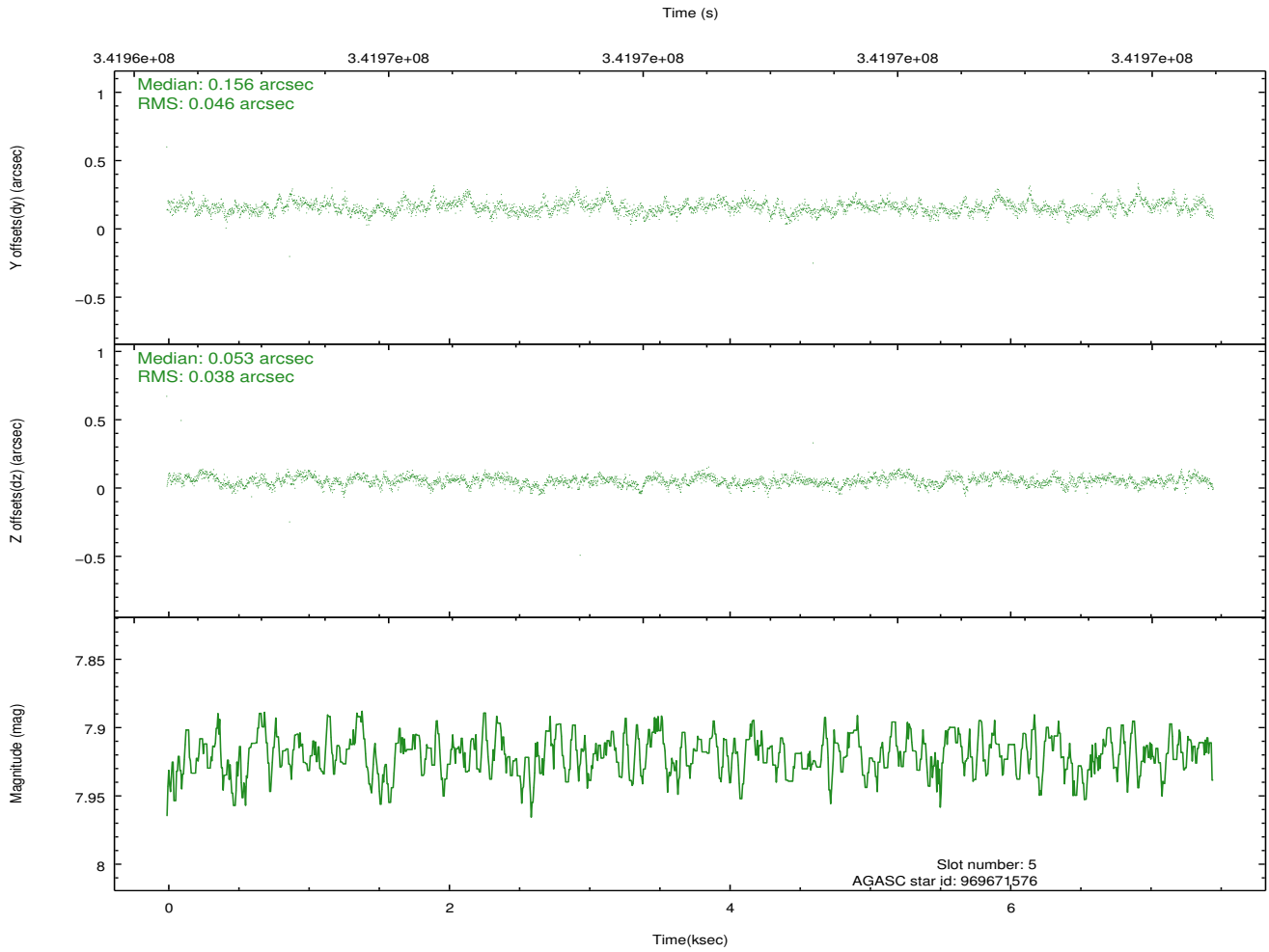
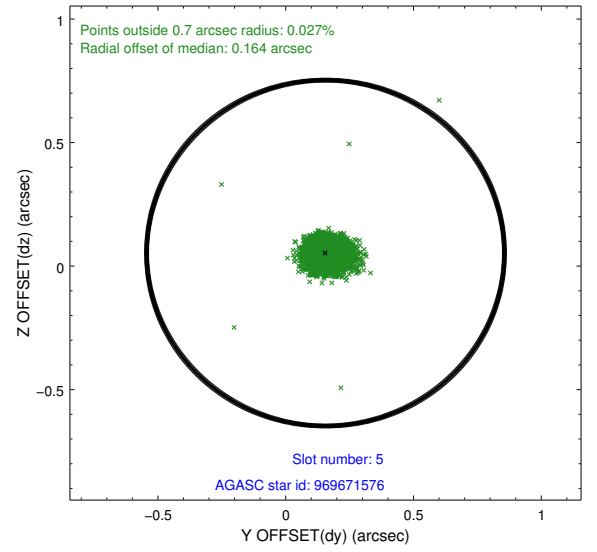
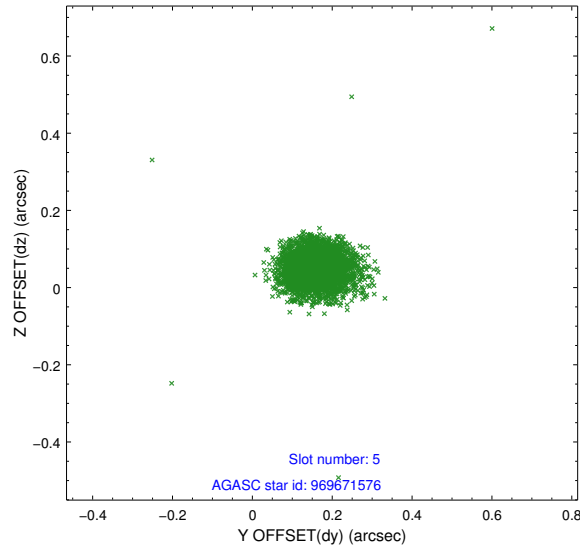
2.4.1 Slot 3



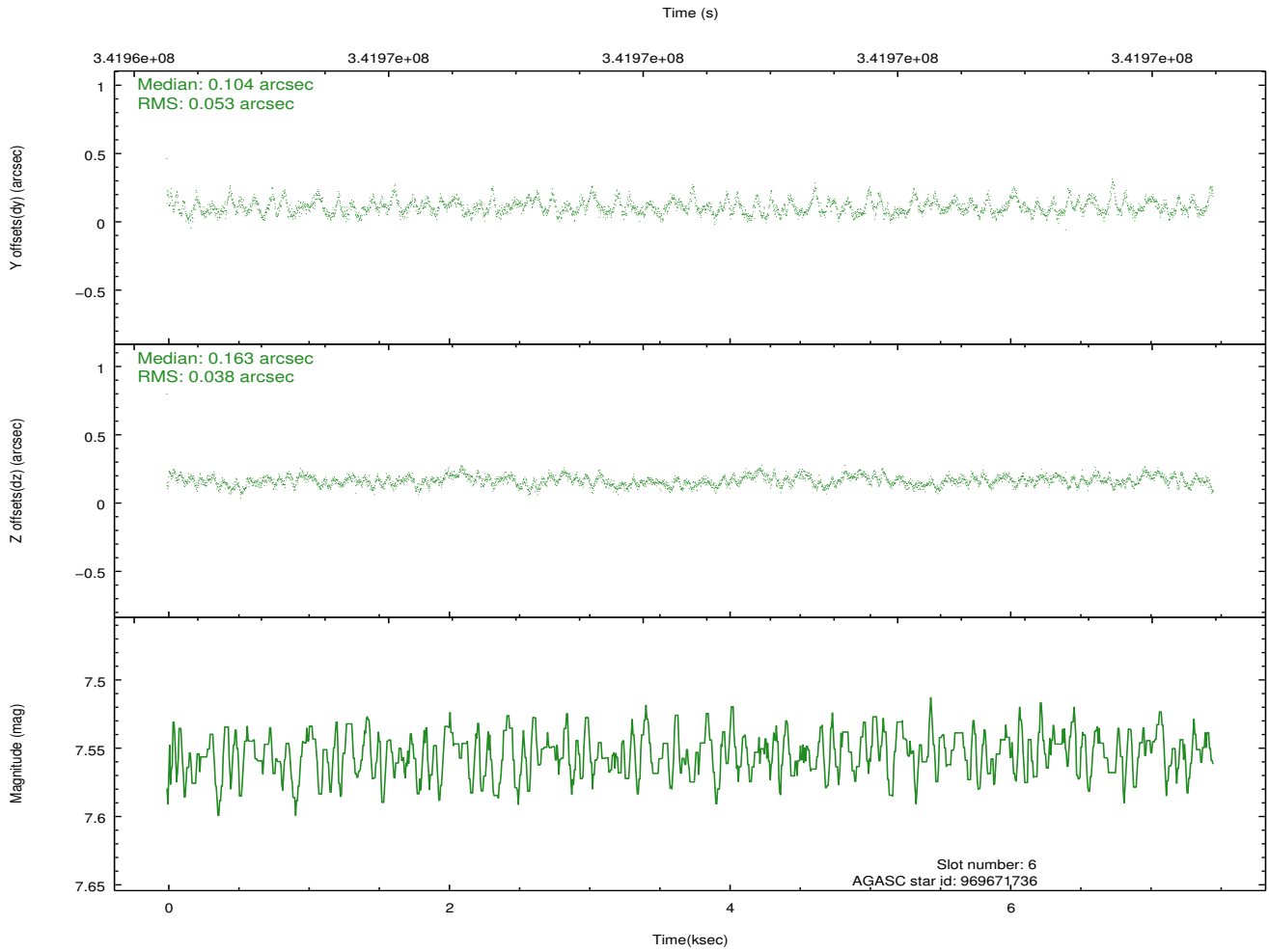
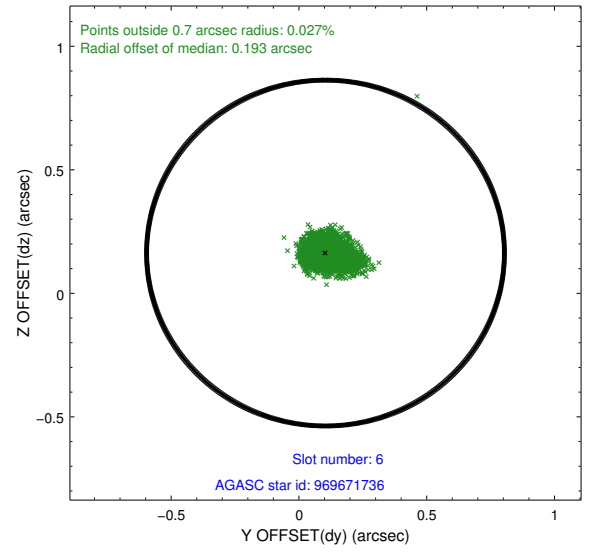
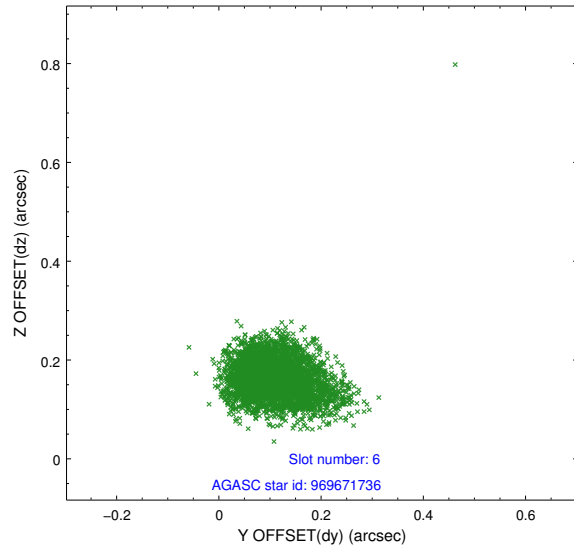
2.4.2 Slot 4



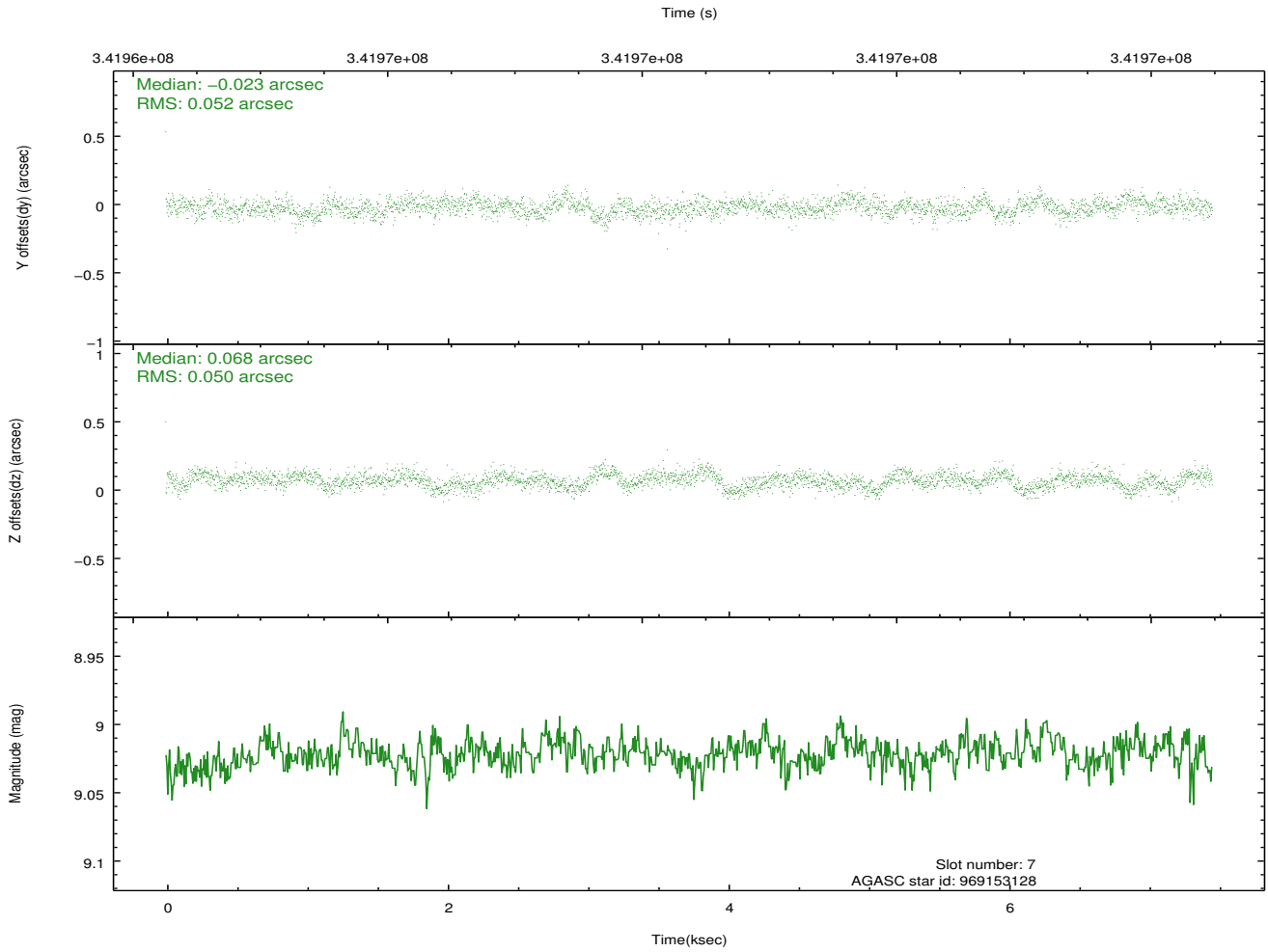
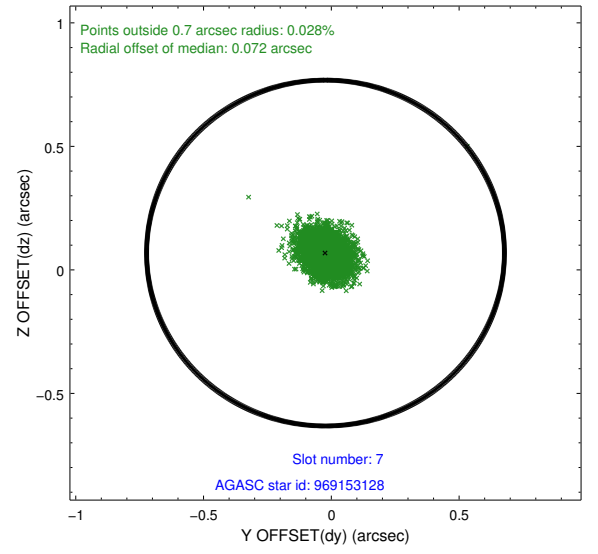
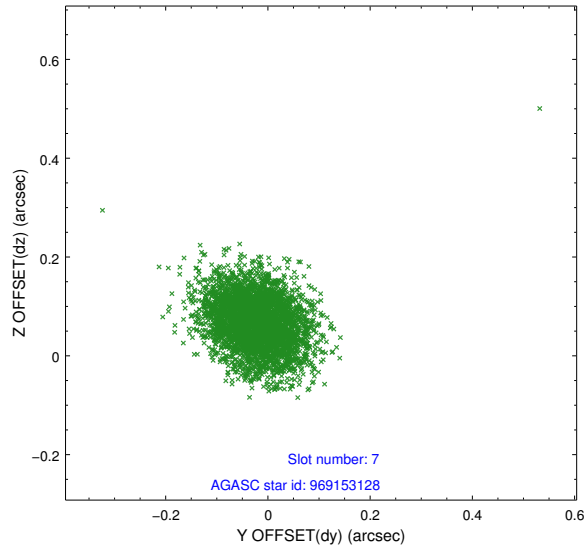
2.4.3 Slot 5



2.4.4 Slot 6

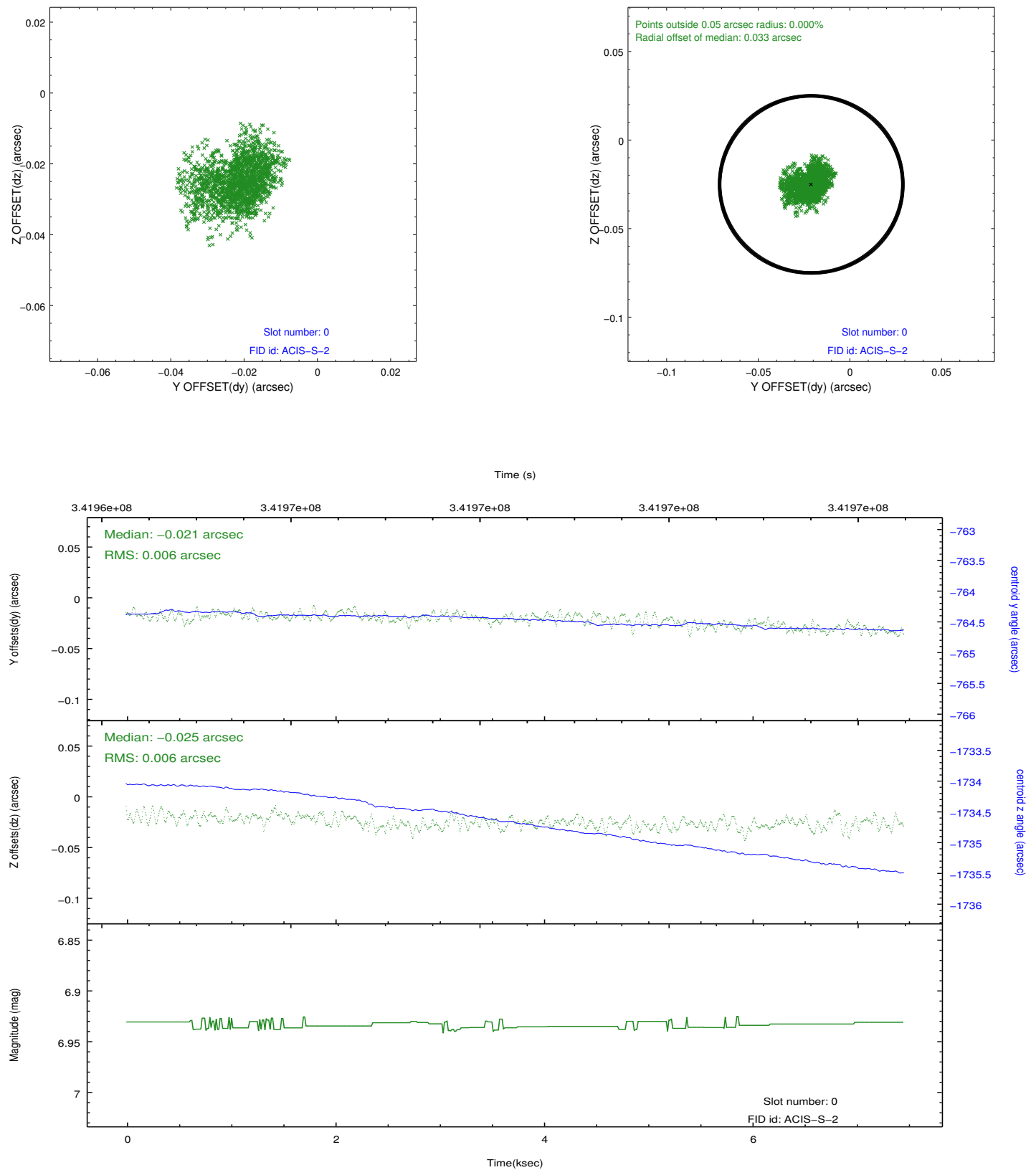


2.4.5 Slot 7

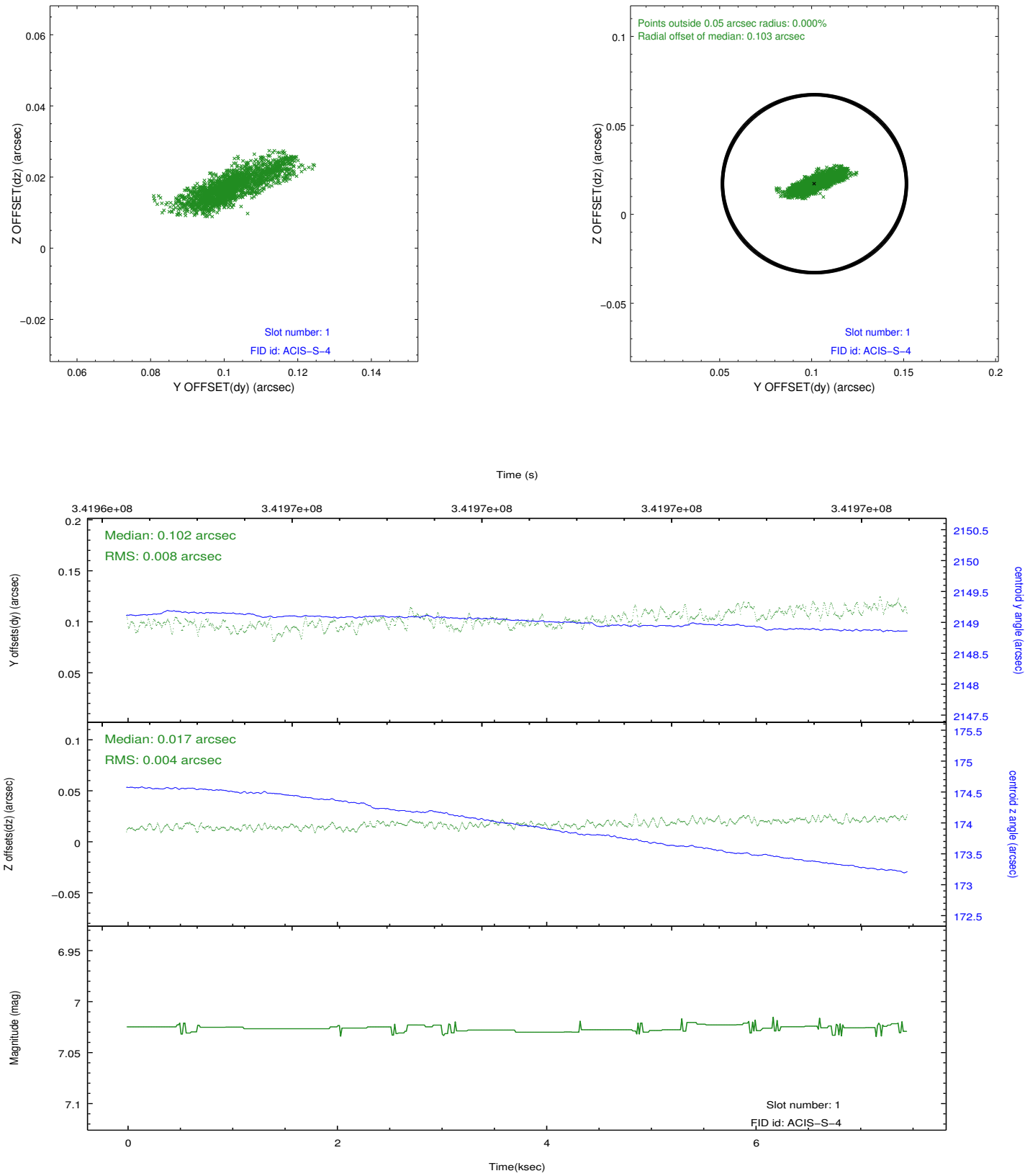


2.5 FID Slots

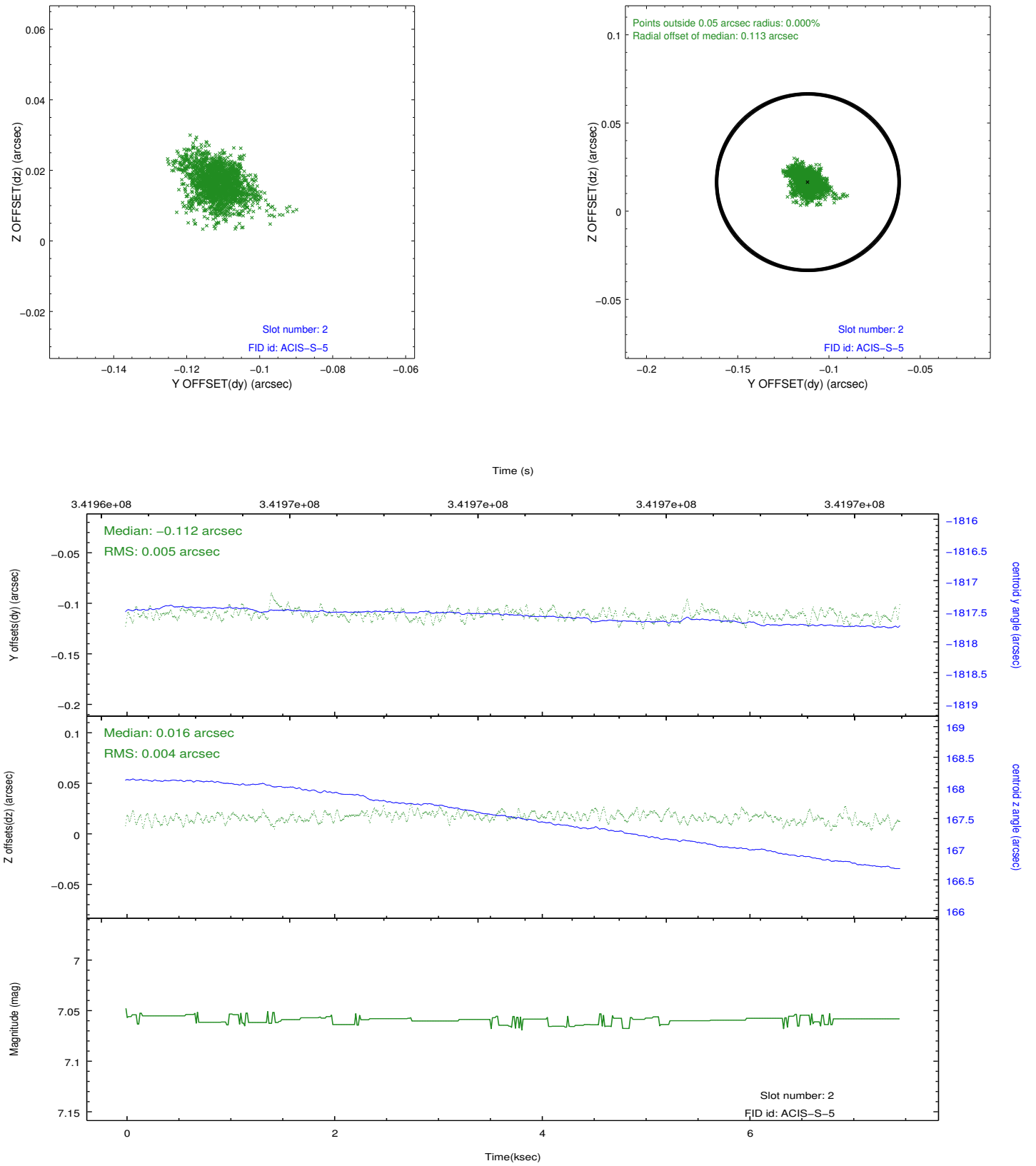
2.5.1 Slot 0



2.5.2 Slot 1



2.5.3 Slot 2



A Summary

A.1 Status

V&V Scientist	Jen Lauer
V&V Date (YYYY-MM-DD)	2012.05.31
V&V Edition	1
V&V Disposition and Status	OK
V&V Charge Time	7.45279997

A.2 Comments