

V&V Reference Report

L2 ASCDS Version : 8.4.4

Observation 10870 - L2 Version 2
Chandra X-Ray Center

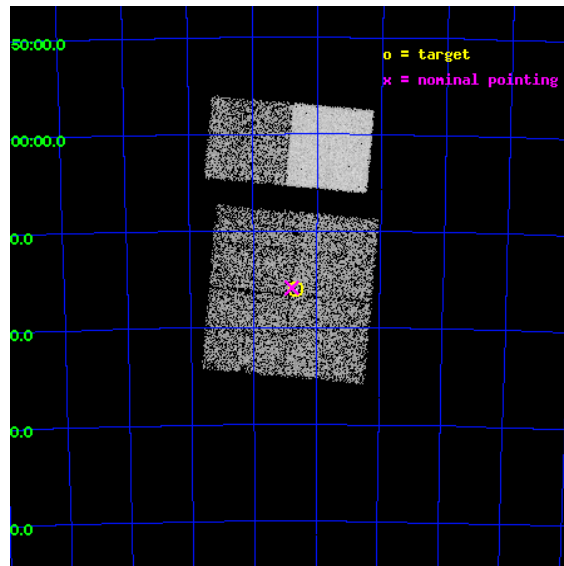
L2 Processing Date : Jun 1 2012

Contents

1	Front	2
2	OBI	3
2.1	OBI	3
2.1.1	Images	3
2.1.2	Bias	3
2.1.3	Parameters	4
2.1.4	Events	4
2.2	Compared Parameters	5
2.3	Aspect	6
2.4	Star Slots	9
2.4.1	Slot 3	9
2.4.2	Slot 4	10
2.4.3	Slot 5	11
2.4.4	Slot 6	12
2.4.5	Slot 7	13
2.5	FID Slots	14
2.5.1	Slot 0	14
2.5.2	Slot 1	15
2.5.3	Slot 2	16
A	Summary	17
A.1	Status	17
A.2	Comments	17

1 Front

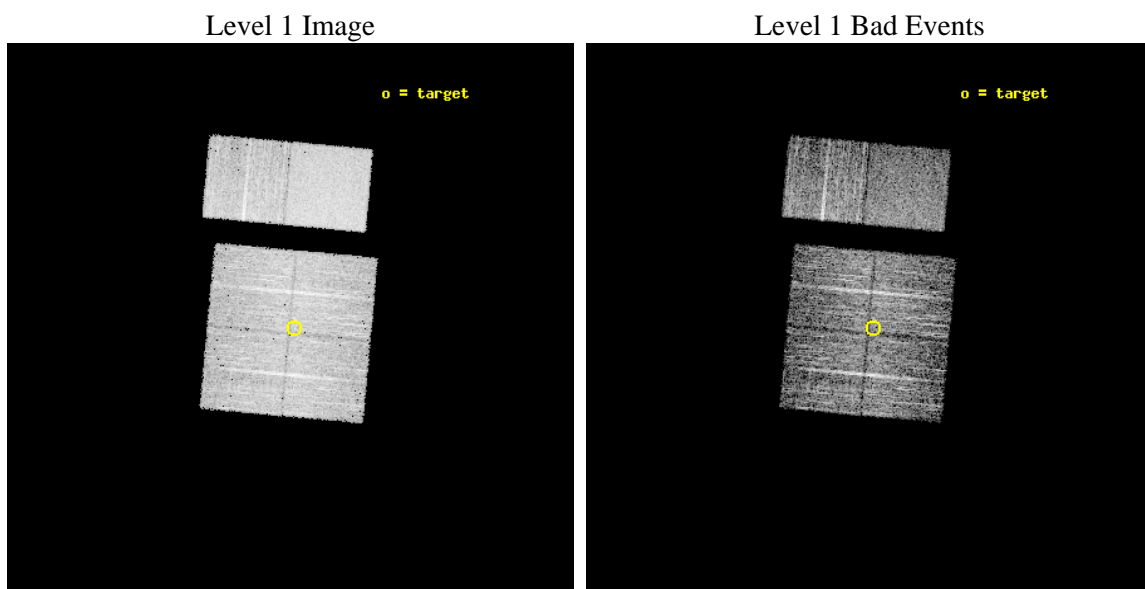
seq_num	200470	Sequence number
obs_id	10870	Observation id
title	Probing the Gas in the Planet Forming Regions of Protoplanetary Disks	Proposal title
observer	Dr. Nuria Calvet	Principal investigator
object	T35/SZ27	Source name
dtcycle	0	
cycle	P	events from which exps? Prim/Second/Both
ra_targ	167.162917	Observer's specified target RA [deg]
dec_targ	-77.267833	Observer's specified target Dec [deg]
ra_nom	167.19640571294	Nominal RA [deg]
dec_nom	-77.264782092448	Nominal Dec [deg]
roll_nom	5.2413985002648	Nominal Roll [deg]
revision	2	Processing version of data
ontime	4217.5999843478	Sum of GTIs [s]
livetime	4164.1941938122	Livetime [s]
ontime0	4217.5999843478	Sum of GTIs [s]
ontime1	4217.5999843478	Sum of GTIs [s]
ontime2	4217.5999843478	Sum of GTIs [s]
ontime3	4217.5999843478	Sum of GTIs [s]
ontime6	4217.5999843478	Sum of GTIs [s]
ontime7	4217.5999843478	Sum of GTIs [s]
l2events	46883	Number of level 2 events



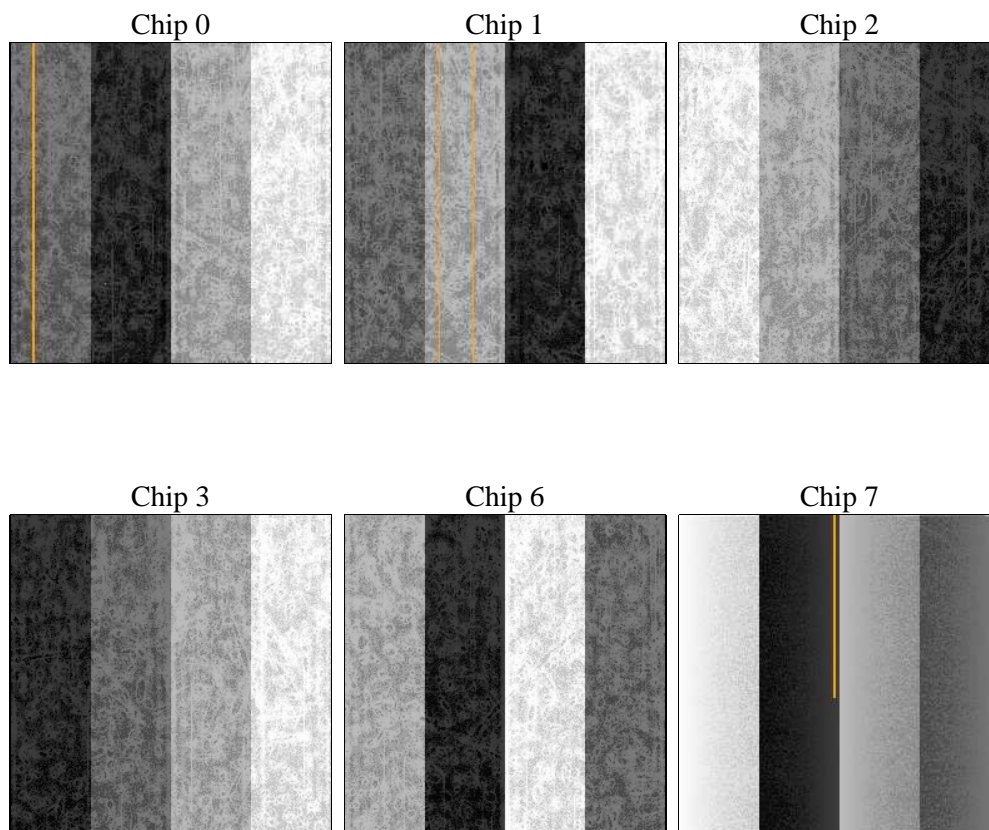
2 OBI

2.1 OBI

2.1.1 Images



2.1.2 Bias



2.1.3 Parameters

obi_num	0	Obi number	sched_exp_time	4150.000000	[s] Scheduled observation exposure time
ascdsver	8.4.4	Processing system revision	ontime	4217.5999843478	Sum of GTIs [s]
caldsver	4.4.9	 	ontime0	4217.5999843478	Sum of GTIs [s]
date	2012-06-01T22:55:46	Date and time of file creation	ontime1	4217.5999843478	Sum of GTIs [s]
revision	2	Processing version of data	ontime2	4217.5999843478	Sum of GTIs [s]
			ontime3	4217.5999843478	Sum of GTIs [s]
			ontime6	4217.5999843478	Sum of GTIs [s]
			ontime7	4217.5999843478	Sum of GTIs [s]
			l1events	268358	Number of level 1 events

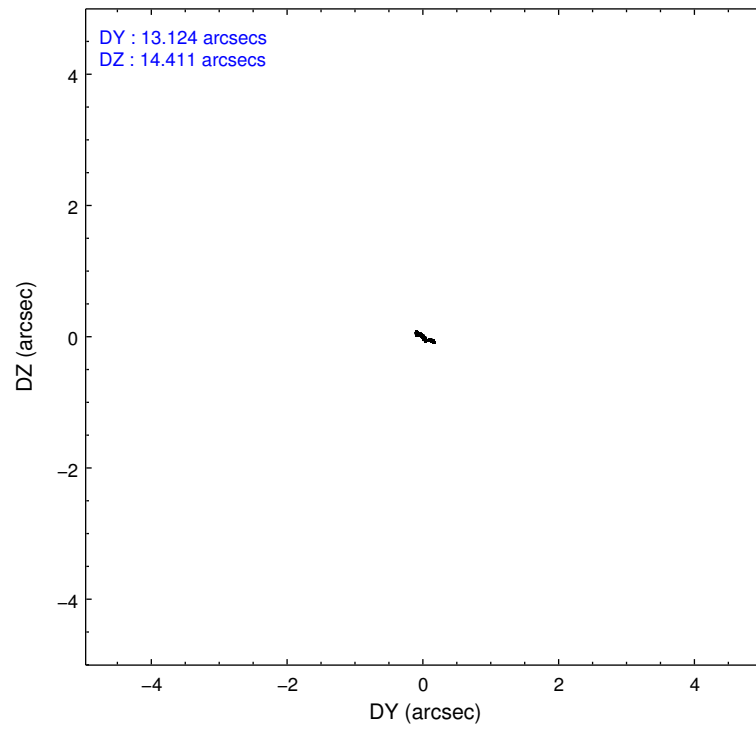
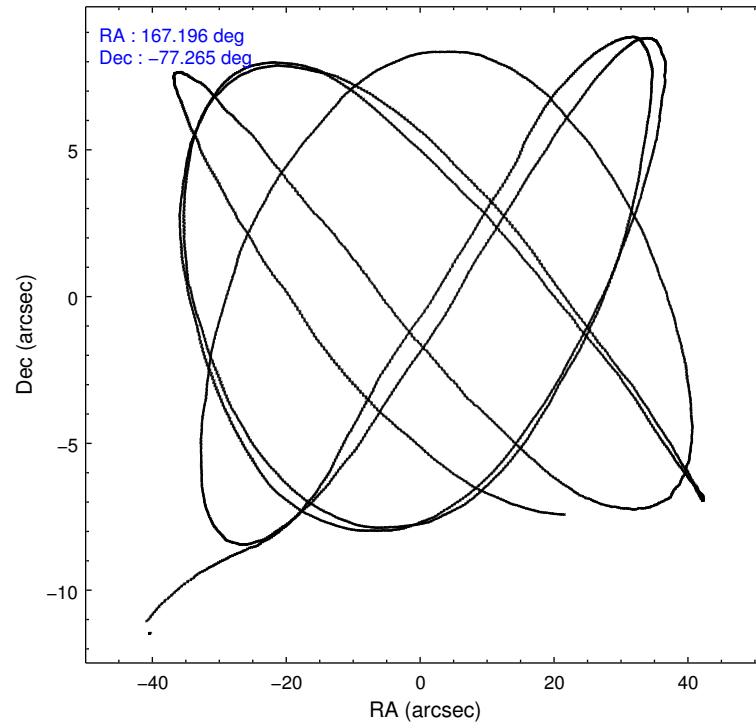
2.1.4 Events

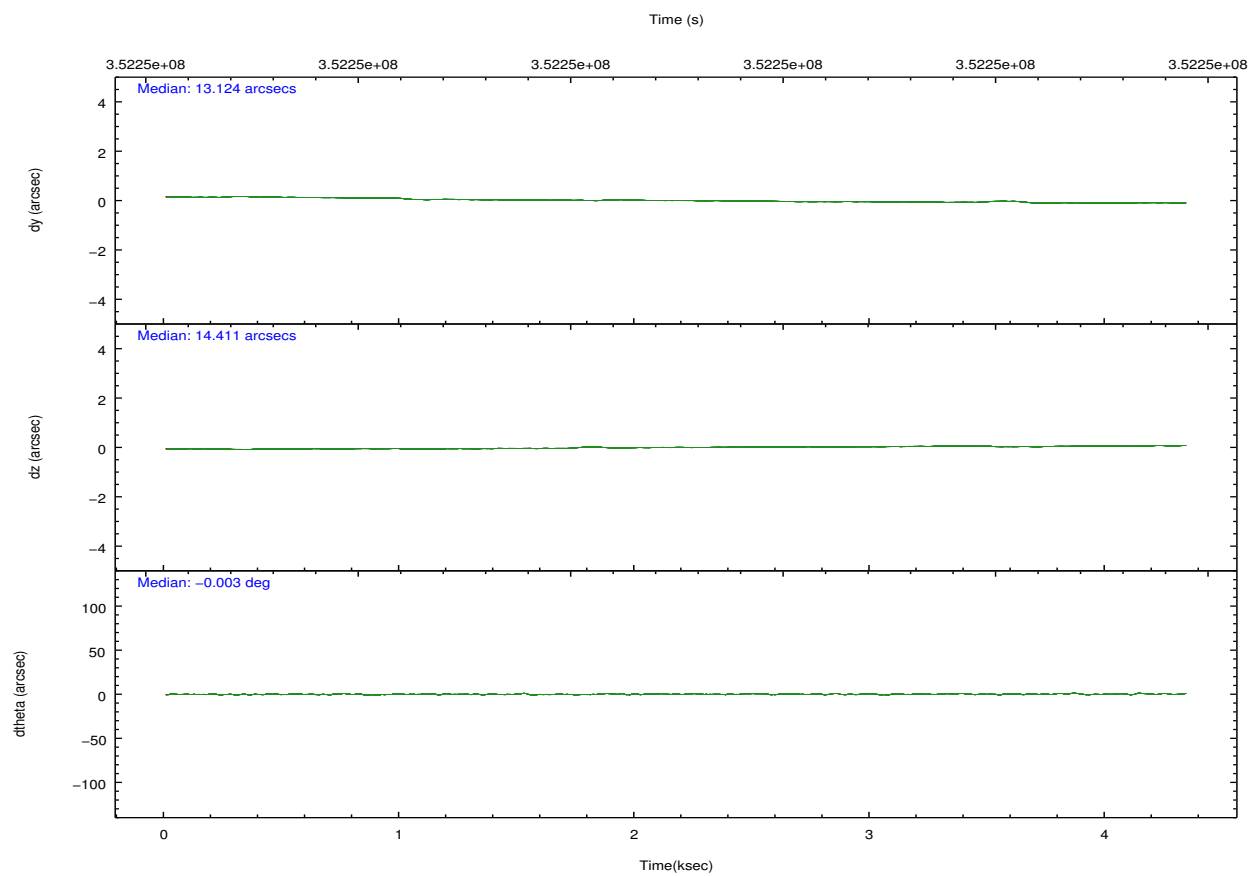
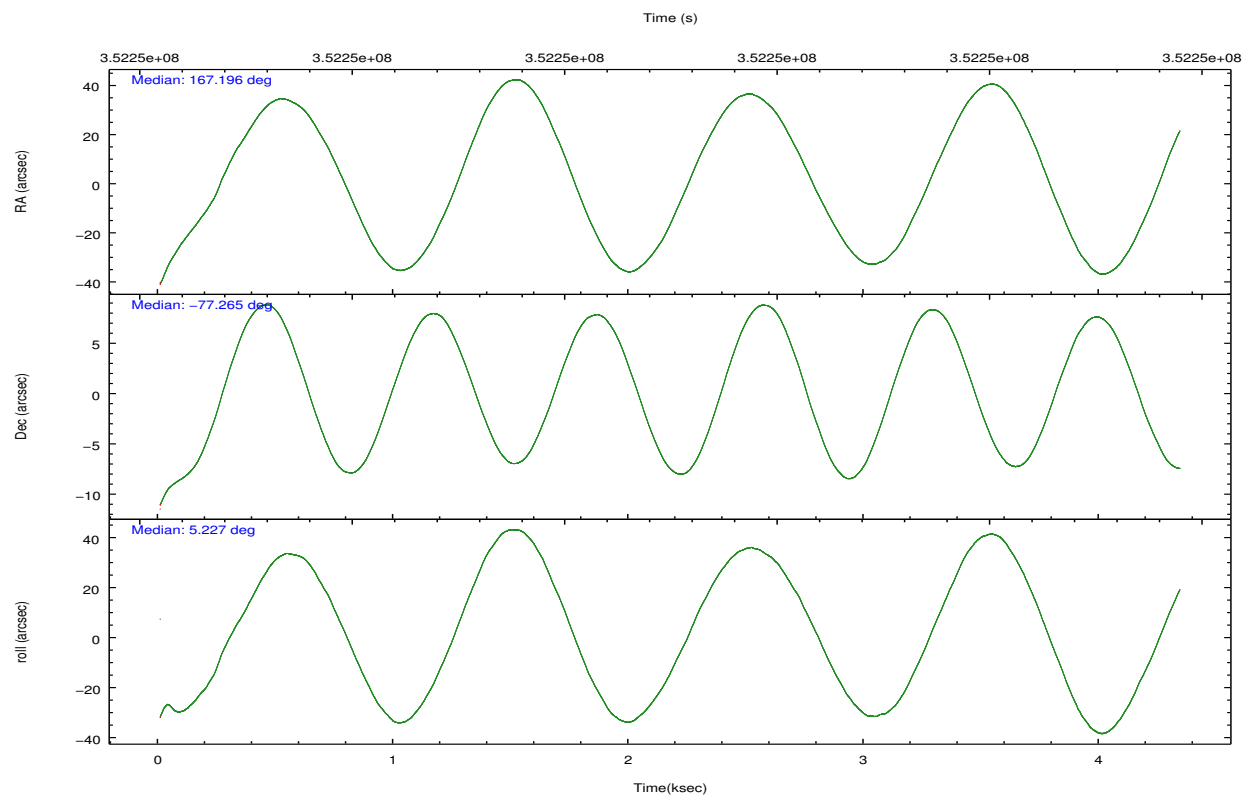
	ccd 0	ccd 1	ccd 2	ccd 3	ccd 6	ccd 7		ccd 0	ccd 1	ccd 2	ccd 3	ccd 6	ccd 7
level 1 events	38811	40255	40823	43735	44546	60188	grade 0 events	2150	2163	2068	2283	2021	2076
rejected events	33578	34689	35916	38443	39335	35521		5%	5%	5%	5%	4%	3%
rejected %	86%	86%	87%	87%	88%	59%	grade 1 events	27	18	30	29	26	50
								0%	0%	0%	0%	0%	0%
							grade 2 events	1210	1303	1079	1037	1155	5069
								3%	3%	2%	2%	2%	8%
							grade 3 events	499	472	451	495	462	2026
								1%	1%	1%	1%	1%	3%
							grade 4 events	426	491	445	489	494	2066
								1%	1%	1%	1%	1%	3%
							grade 5 events	1845	1833	1670	2033	2039	5769
								4%	4%	4%	4%	4%	9%
							grade 6 events	953	1139	871	994	1087	13463
								2%	2%	2%	2%	2%	22%
							grade 7 events	31701	32836	34209	36375	37262	29669
								81%	81%	83%	83%	83%	49%

2.2 Compared Parameters

Parameter	Planned	Actual	Parameter	Planned	Actual
Instrument	ACIS	ACIS	Obspar format version number	7	7
Detector	ACIS-012367	ACIS-012367	Obspar file type	PREDICTED	ACTUAL
Grating	NONE	NONE	Obspar update status	NONE	UPDATED
Data mode	FAINT	FAINT	Number of optional ACIS chips dropped	0	0
Observation mode	POINTING	POINTING	On-chip summing requested	N	N
[deg] Pointing RA	167.095092	167.1964057129361	Subarray requested	NONE	NONE
[deg] Pointing Dec	-77.280687	-77.26478209244809	Alternating exposures requested	N	N
[deg] Pointing Roll	4.933837	5.241398500264829	[s] Primary exposure time	0.000000	3.2
[mm] SIM focus pos	-0.782348	-0.7809083437167272			
[mm] SIM defocus	0	0.001439871863259334			
[mm] SIM translation stage pos	-233.592463	-233.5874344608287			
[mm] SIM translation stage offset	0	-0.005018542100998502			
[s] Observation start time (MET)	352248517.184000	352247497.06246			
Observation start date	2009-02-28T22:47:31	2009-02-28T22:31:37			
[s] Observation end time (MET)	352252667.184000	352253200.67524			
Observation end date	2009-02-28T23:56:41	2009-03-01T00:06:40			
Read mode	TIMED	TIMED			

2.3 Aspect



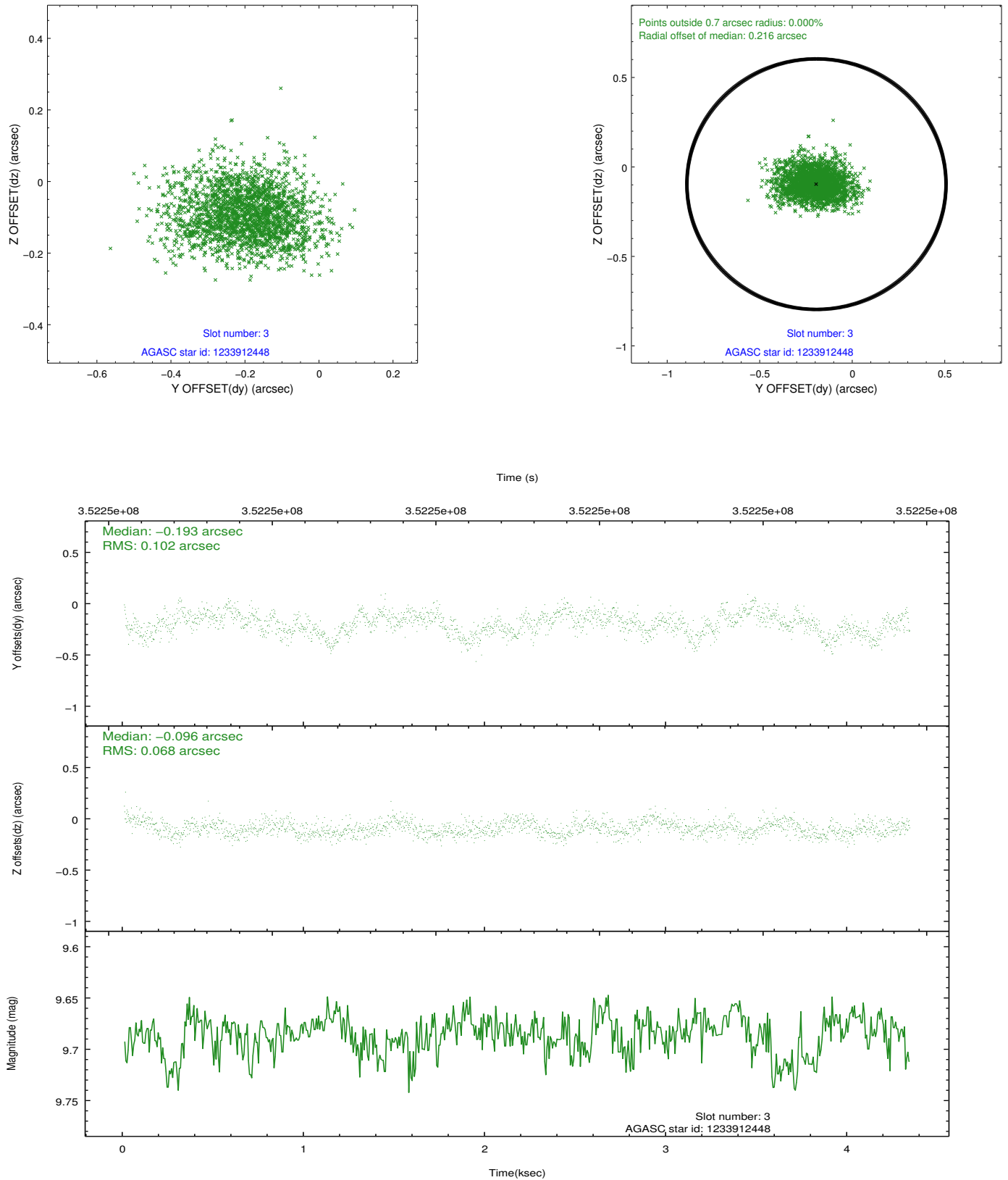


Slot Statistics

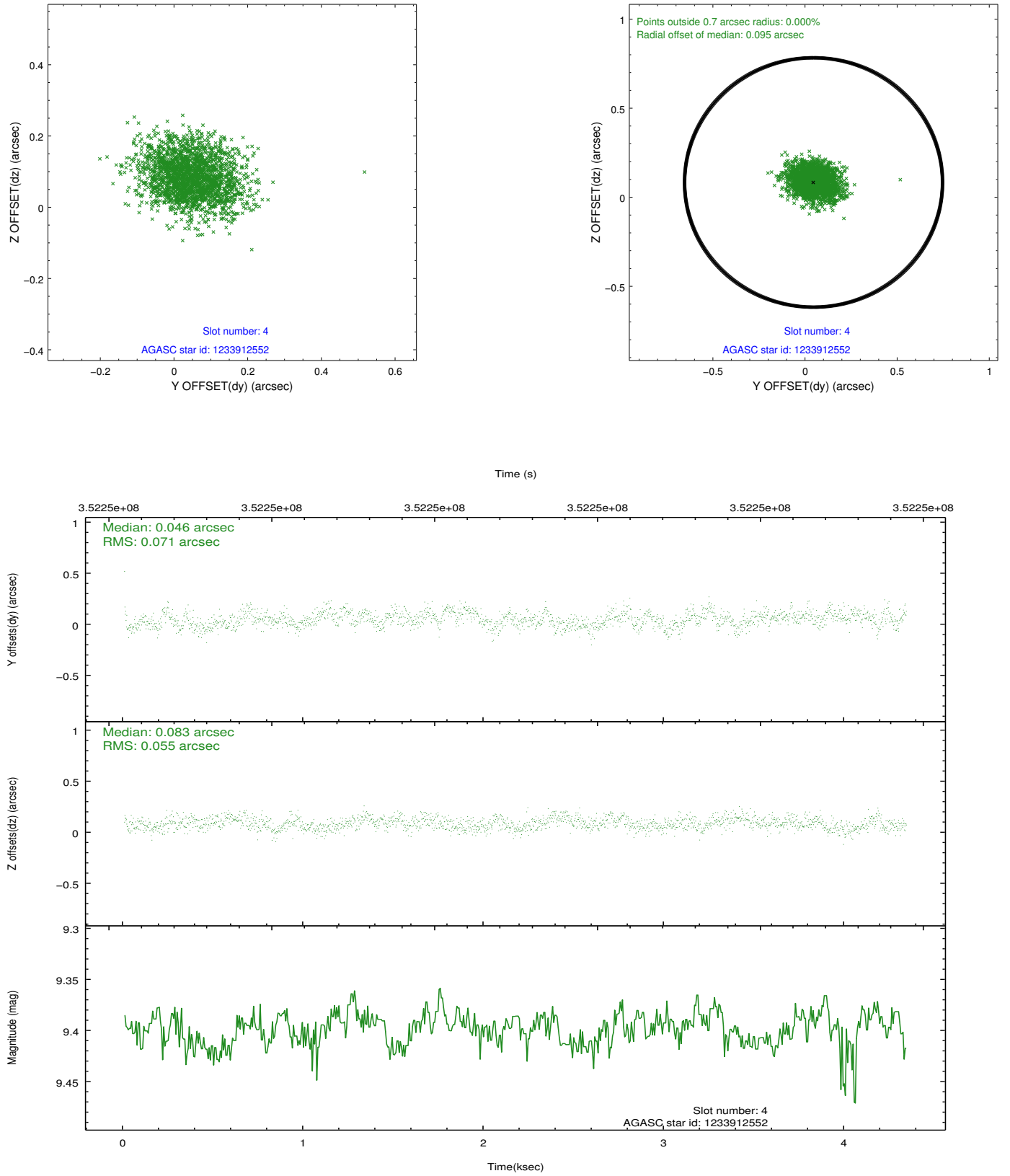
slot	status	id	mag	n_pts	med_dy	med_dz	dr1	dr2	ra	dec	mean_y	mean_z
0	FID	ACIS-I-1	7.11	1058	0.034	0.006	0.006	0.011	0.000000	0.000000	926.43	-837.97
1	FID	ACIS-I-5	7.11	1058	-0.214	0.041	0.006	0.010	0.000000	0.000000	-1821.17	1058.80
2	FID	ACIS-I-6	7.11	1058	0.089	0.023	0.007	0.010	0.000000	0.000000	390.43	1704.93
3	GUIDE	1233912448	9.68	2116	-0.193	-0.096	0.127	0.217	169.582957	-77.121294	2034.50	358.40
4	GUIDE	1233912552	9.40	2114	0.046	0.083	0.096	0.157	169.875278	-77.654227	2013.20	-1573.40
5	GUIDE	1233913328	9.46	2106	-0.010	-0.103	0.099	0.163	168.791214	-77.037709	1439.52	733.57
6	GUIDE	1233913352	9.32	2116	0.237	0.242	0.121	0.191	165.333422	-77.603525	-1456.51	-1060.53
7	GUIDE	1233409960	9.09	2112	-0.076	-0.130	0.099	0.159	167.458448	-76.613256	507.82	2366.41

2.4 Star Slots

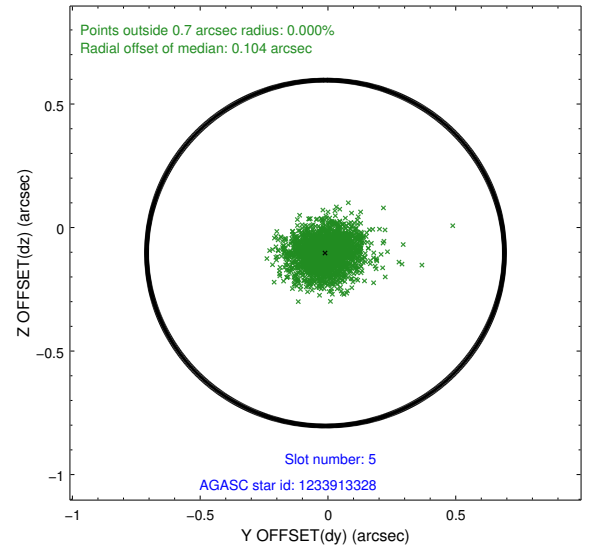
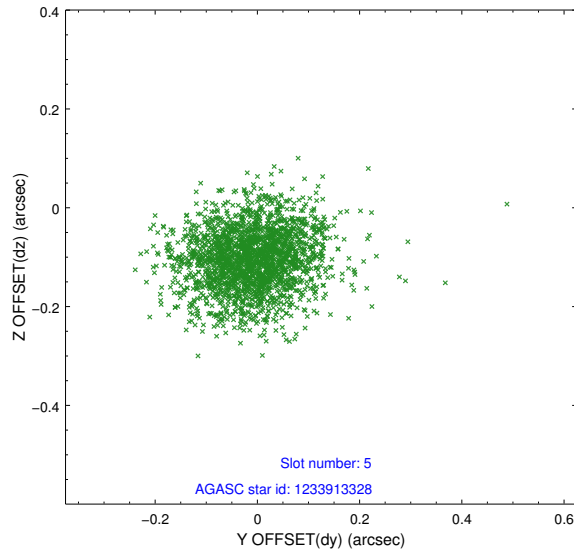
2.4.1 Slot 3



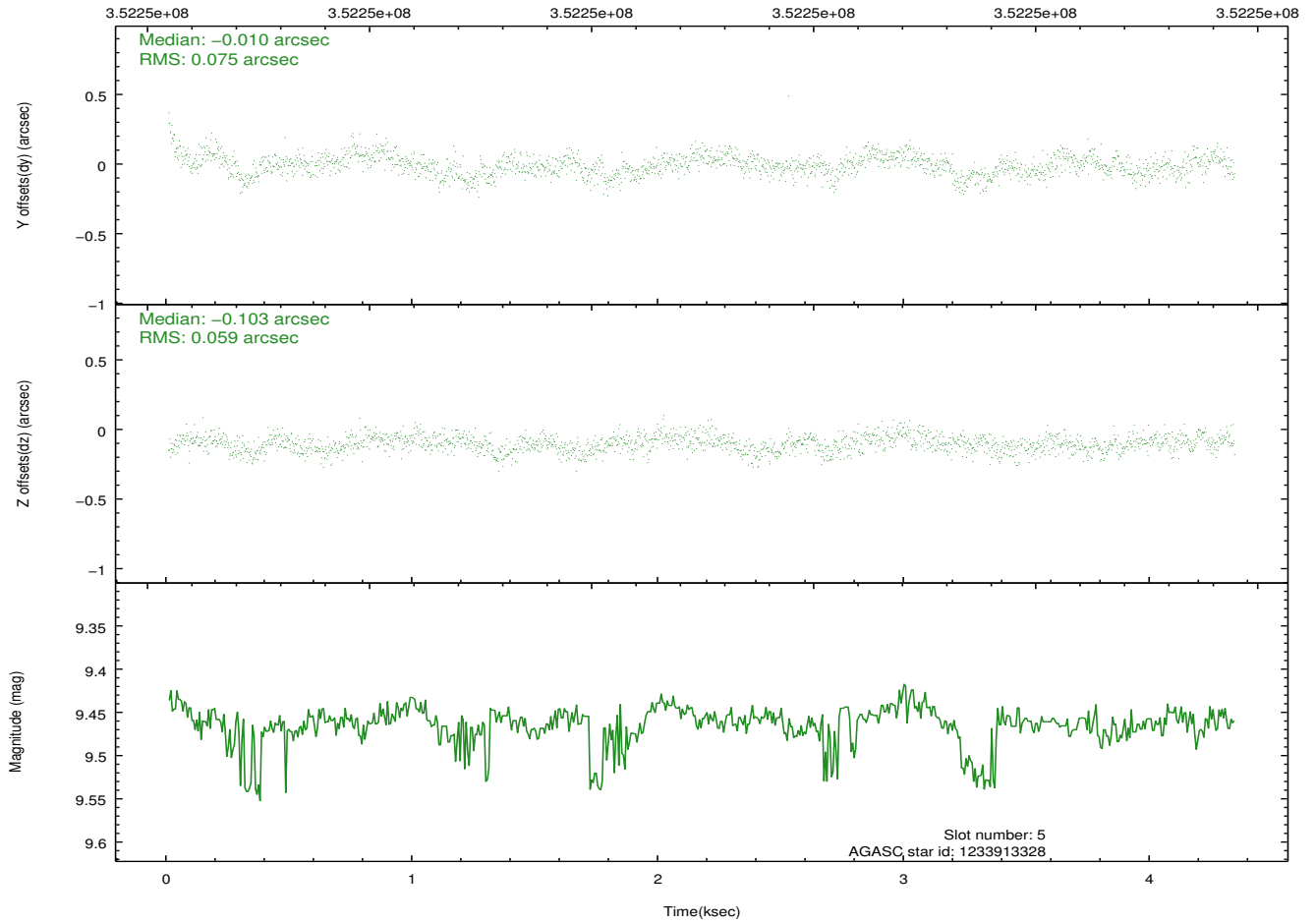
2.4.2 Slot 4



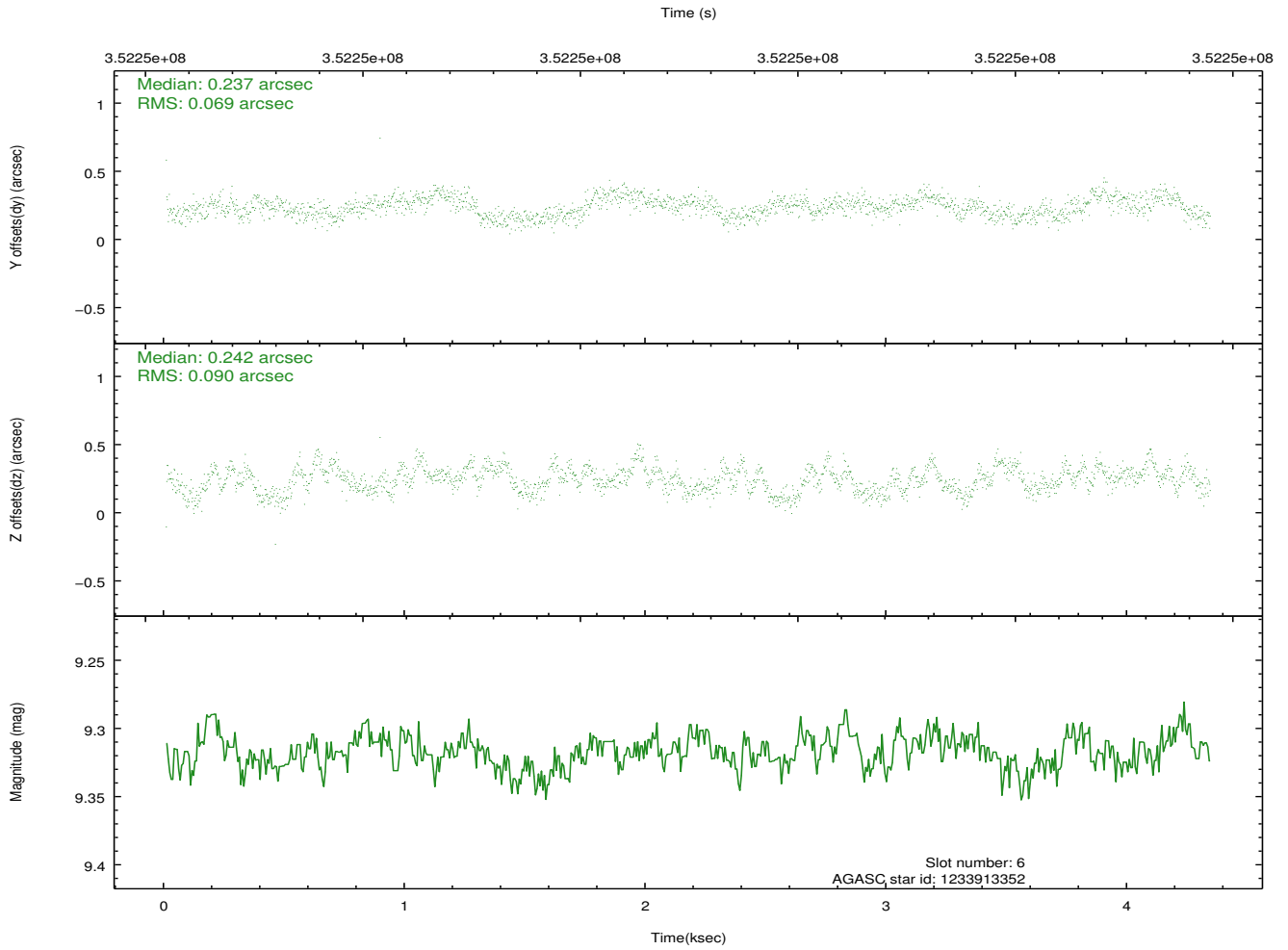
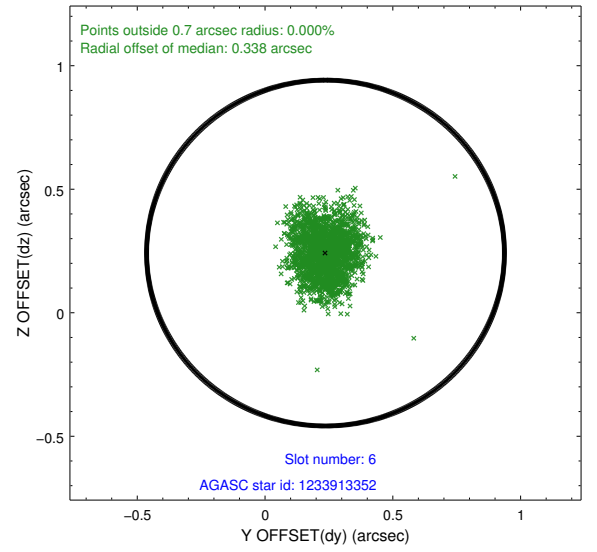
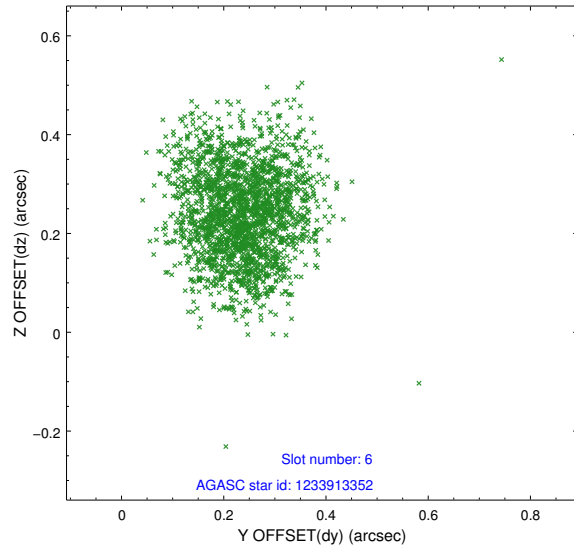
2.4.3 Slot 5



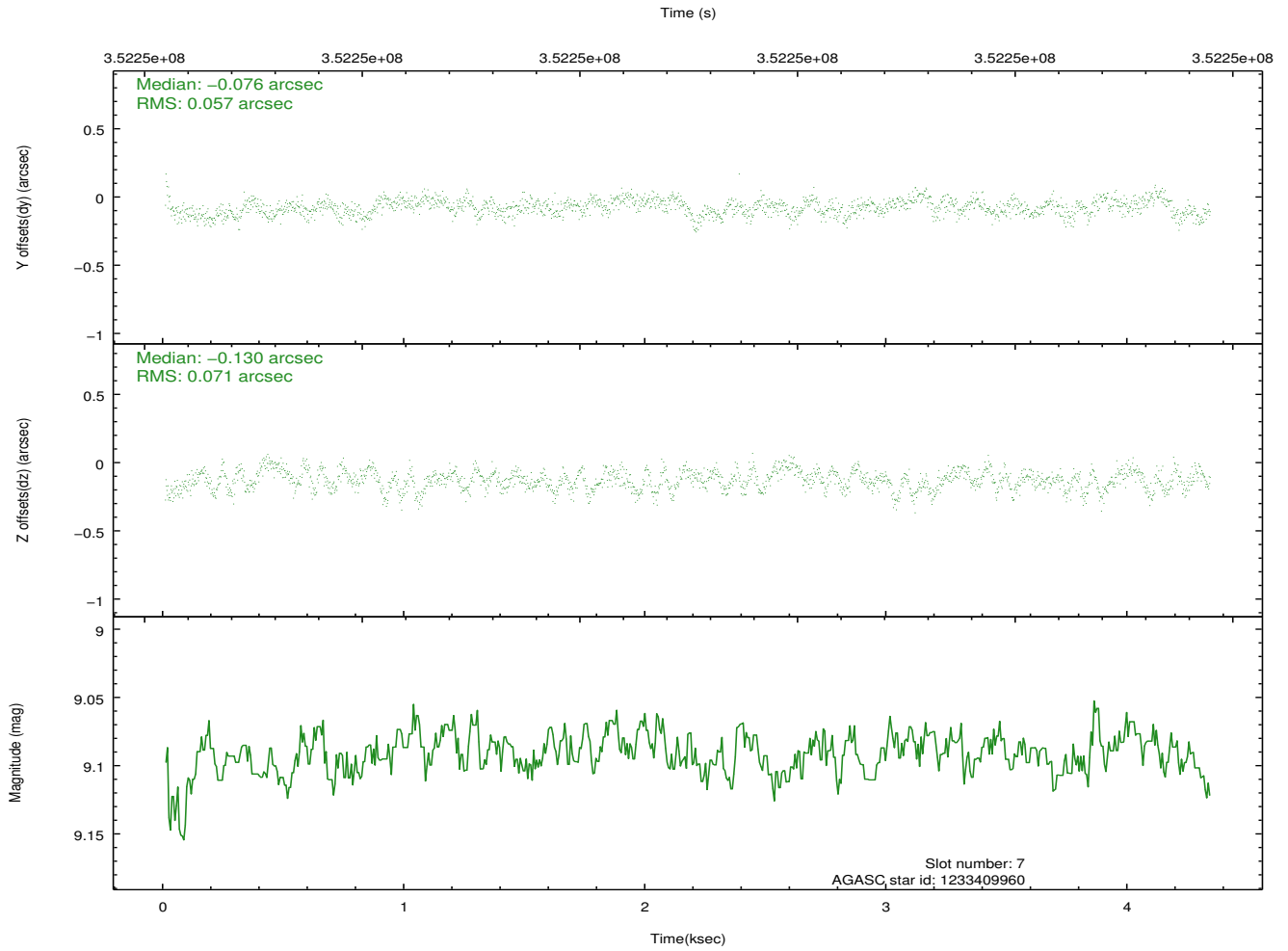
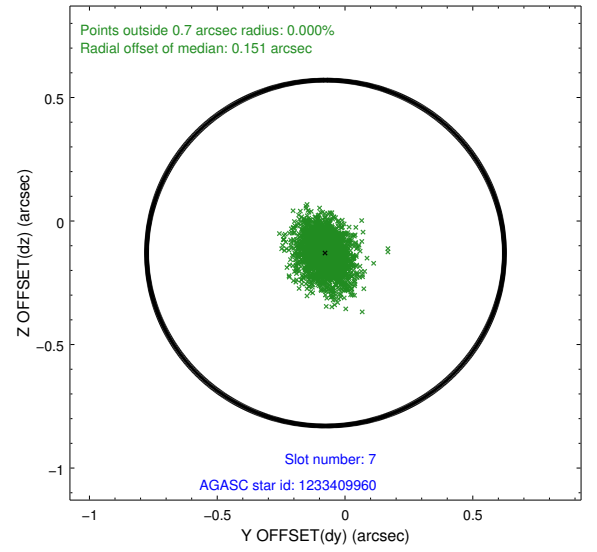
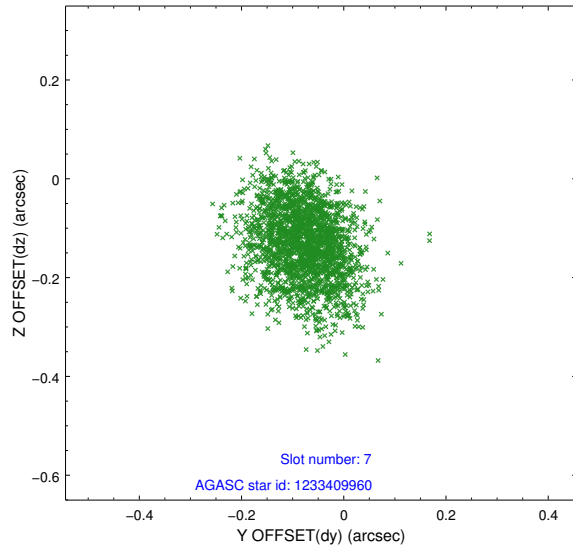
Time (s)



2.4.4 Slot 6

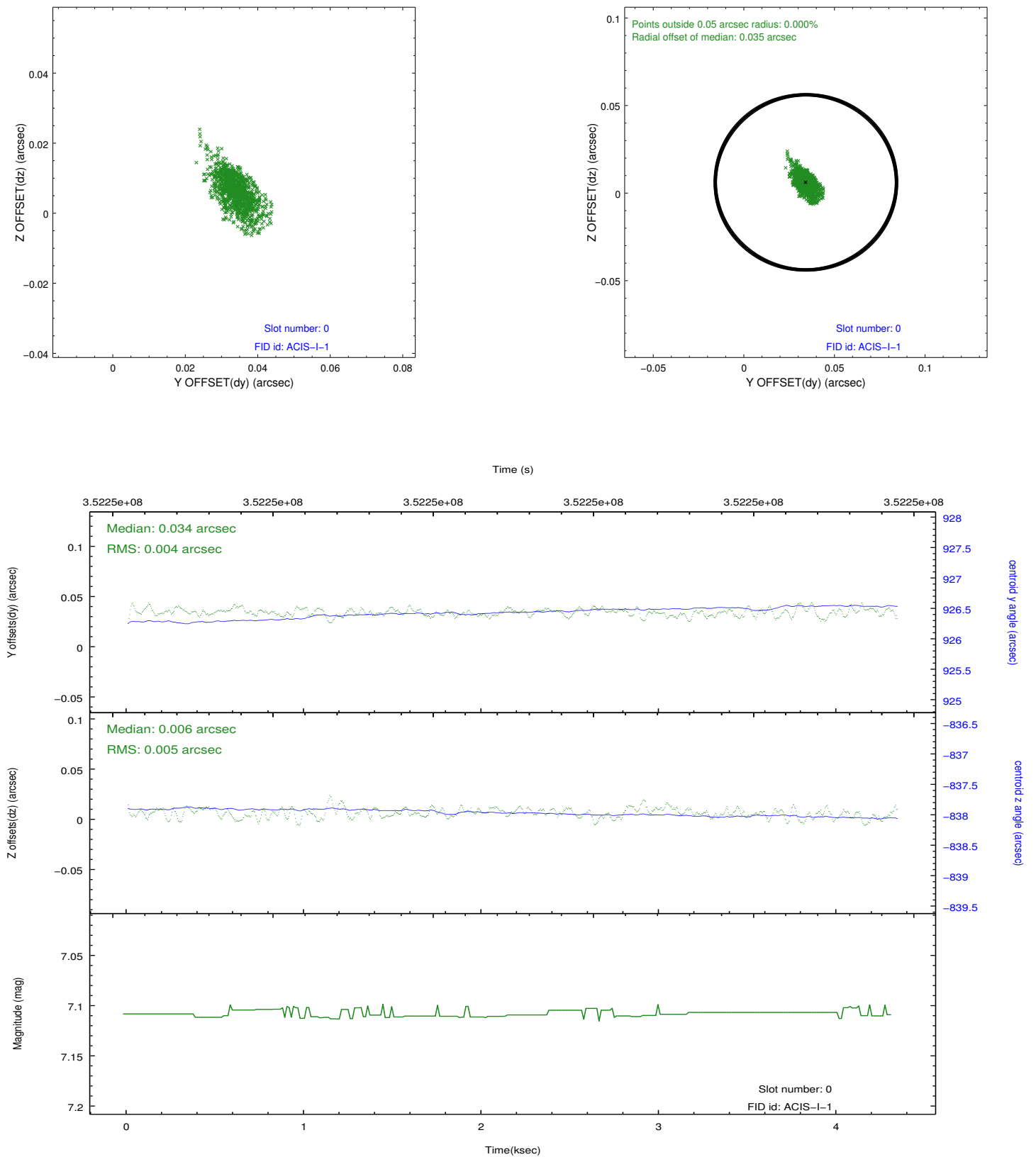


2.4.5 Slot 7

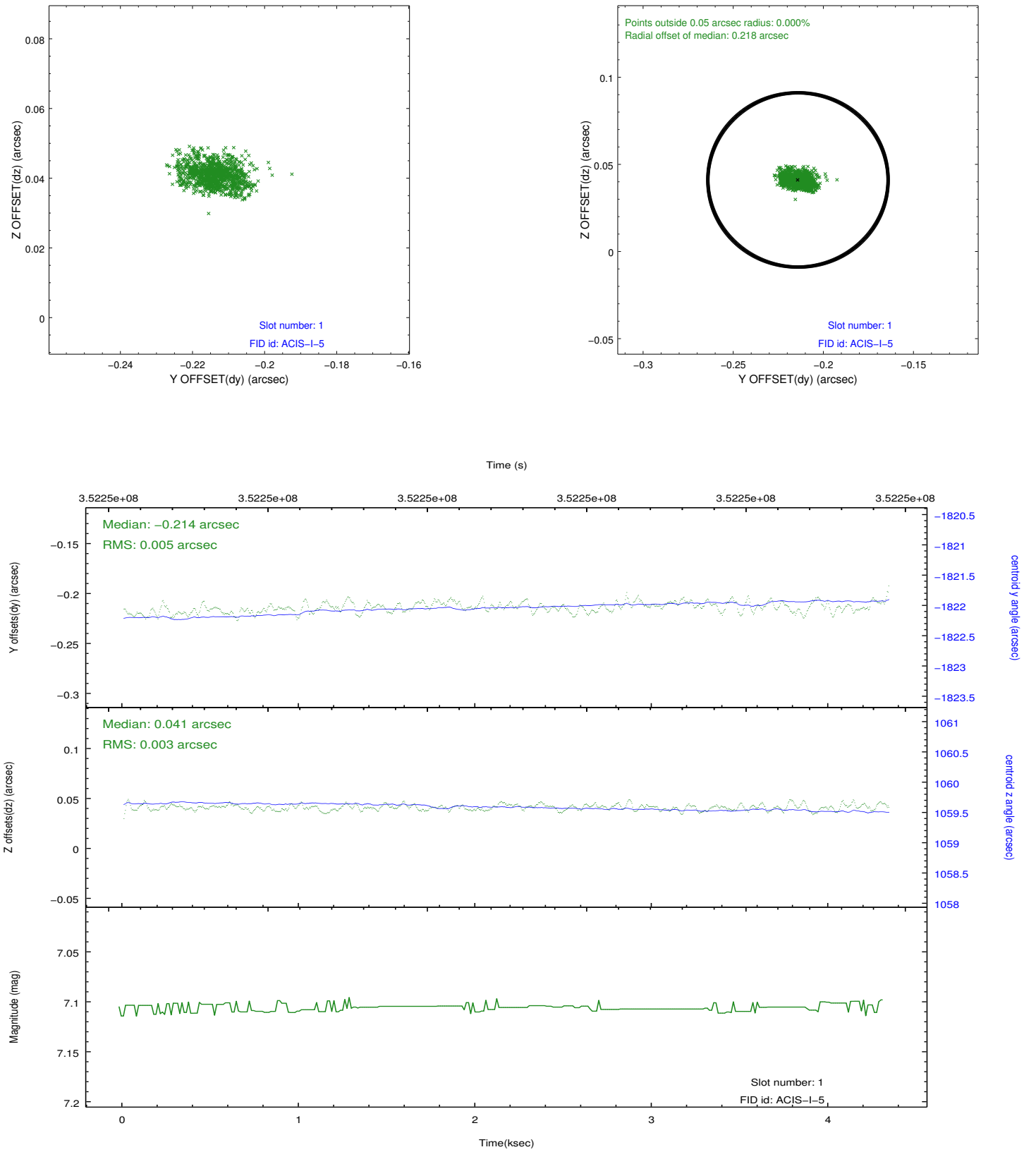


2.5 FID Slots

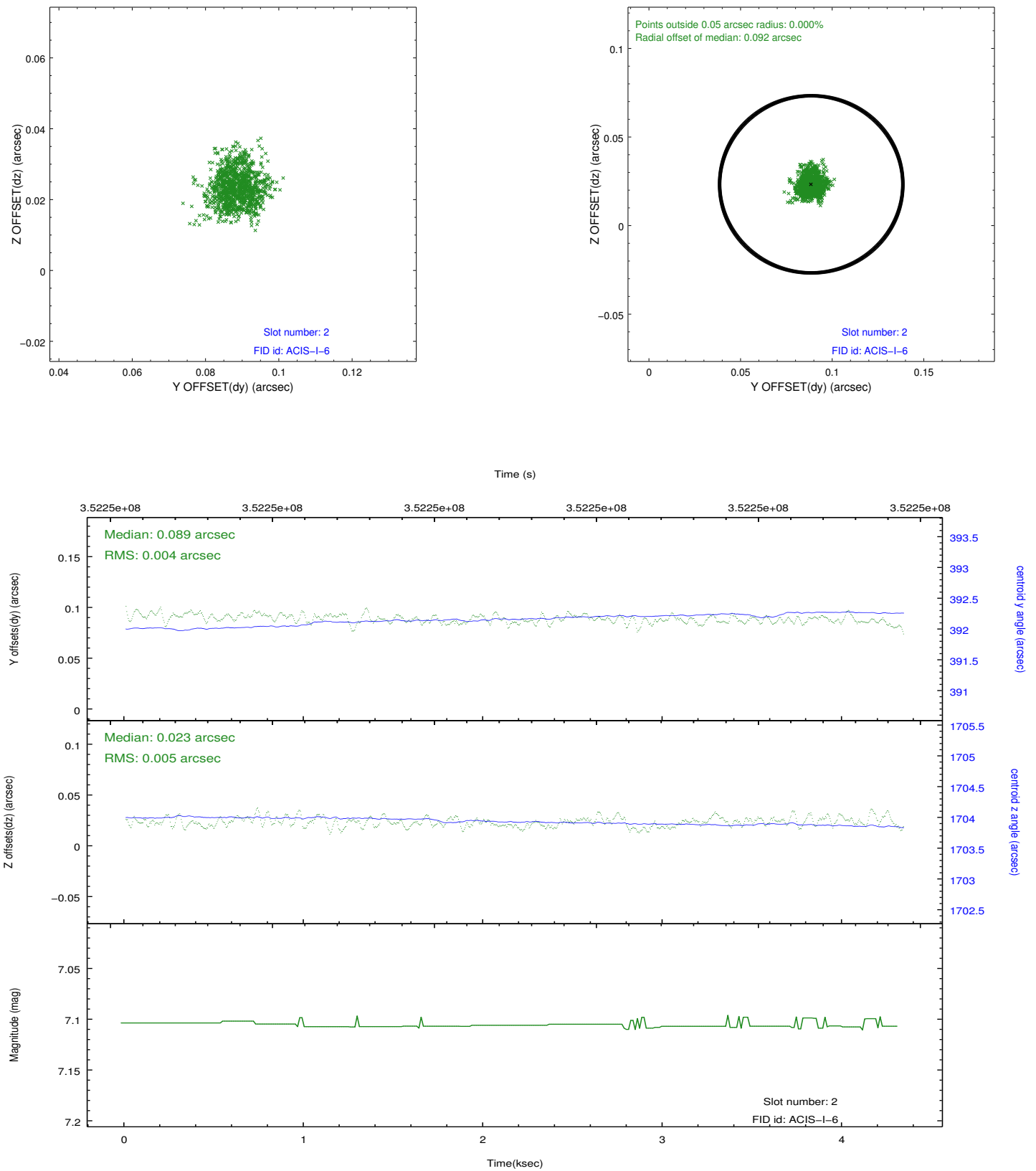
2.5.1 Slot 0



2.5.2 Slot 1



2.5.3 Slot 2



A Summary

A.1 Status

V&V Scientist	Jen Lauer
V&V Date (YYYY-MM-DD)	2012.06.06
V&V Edition	1
V&V Disposition and Status	OK
V&V Charge Time	4.21759998

A.2 Comments

Joint Proposal: CX0-Spitzer