

# V&V Reference Report

## L2 ASCDS Version : 8.4.4

Observation 8239 - L2 Version 2  
Chandra X-Ray Center

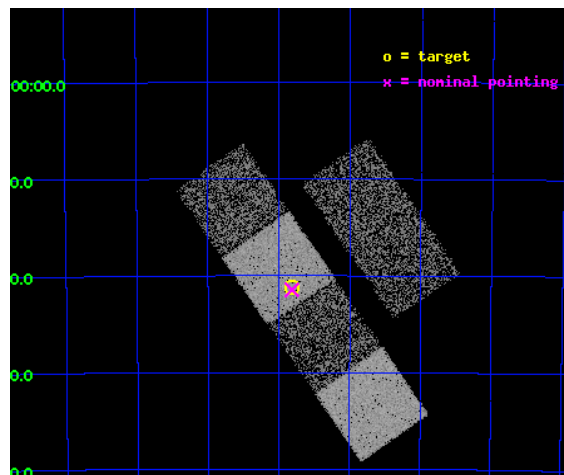
L2 Processing Date : Apr 30 2012

## Contents

<b>1</b>	<b>Front</b>	<b>2</b>
<b>2</b>	<b>OBI</b>	<b>3</b>
2.1	OBI . . . . .	3
2.1.1	Images . . . . .	3
2.1.2	Bias . . . . .	3
2.1.3	Parameters . . . . .	4
2.1.4	Events . . . . .	4
2.2	Compared Parameters . . . . .	5
2.3	Aspect . . . . .	6
2.4	Star Slots . . . . .	9
2.4.1	Slot 3 . . . . .	9
2.4.2	Slot 4 . . . . .	10
2.4.3	Slot 5 . . . . .	11
2.4.4	Slot 6 . . . . .	12
2.4.5	Slot 7 . . . . .	13
2.5	FID Slots . . . . .	14
2.5.1	Slot 0 . . . . .	14
2.5.2	Slot 1 . . . . .	15
2.5.3	Slot 2 . . . . .	16
<b>A</b>	<b>Summary</b>	<b>17</b>
A.1	Status . . . . .	17
A.2	Comments . . . . .	17

# 1 Front

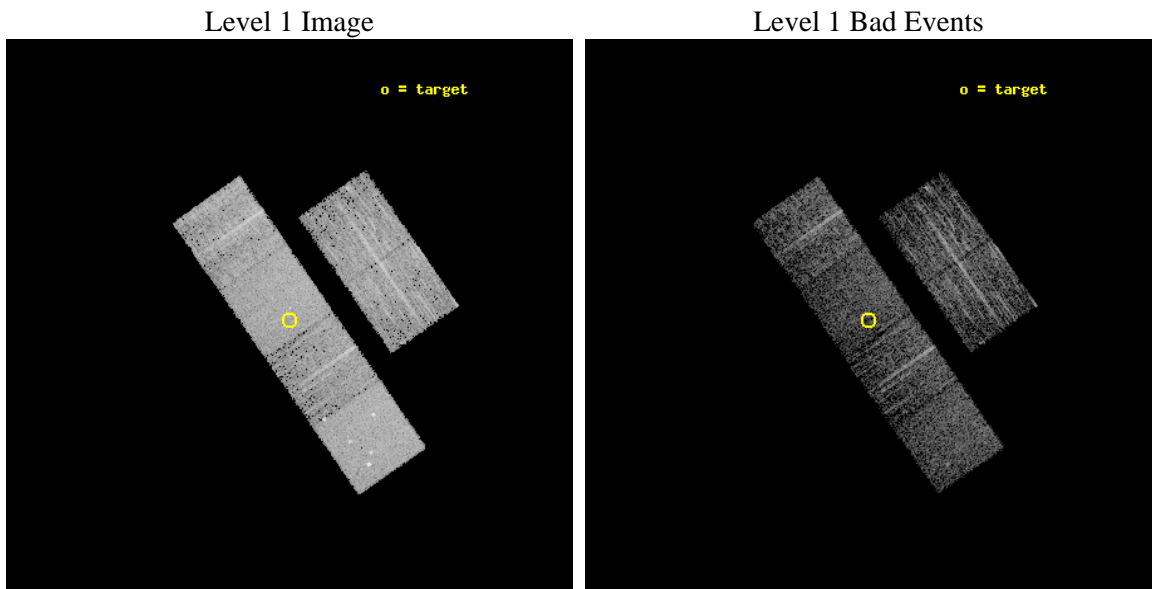
seq_num	900729	Sequence number
obs_id	8239	Observation id
title	Chandra Identification of Compact ASCA Galactic Objects - Part II	&#160
observer	Dr. Stephen Murray	Principal investigator
object	AX J143148-6021	Source name
dtcycle	0	&#160
cycle	P	events from which exps? Prim/Second/Both
ra_targ	217.954167	Observer's specified target RA [deg]
dec_targ	-60.353	Observer's specified target Dec [deg]
ra_nom	217.9539260594	Nominal RA [deg]
dec_nom	-60.357709041049	Nominal Dec [deg]
roll_nom	235.25269952581	Nominal Roll [deg]
revision	2	Processing version of data
ontime	2652.7999901772	Sum of GTIs [s]
livetime	2619.2086393771	Livetime [s]
ontime2	2652.7999901772	Sum of GTIs [s]
ontime3	2652.7999901772	Sum of GTIs [s]
ontime5	2652.7999901772	Sum of GTIs [s]
ontime6	2652.7999901772	Sum of GTIs [s]
ontime7	2652.7999901772	Sum of GTIs [s]
ontime8	2652.7999901772	Sum of GTIs [s]
l2events	43172	Number of level 2 events



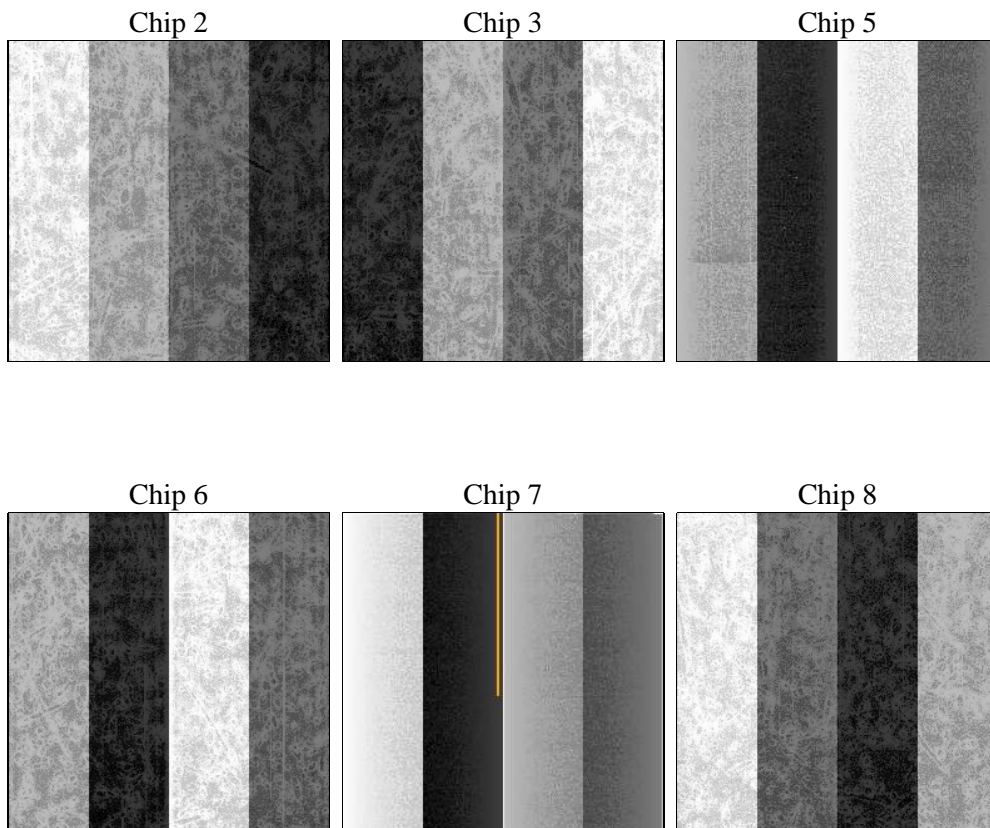
## 2 OBI

### 2.1 OBI

#### 2.1.1 Images



#### 2.1.2 Bias



### 2.1.3 Parameters

obi_num	0	Obi number	sched_exp_time	2500.000000	[s] Scheduled observation exposure time
ascdsver	8.4.4	Processing system revision	ontime	2652.7999901772	Sum of GTIs [s]
caldsver	4.4.9	&#160	ontime2	2652.7999901772	Sum of GTIs [s]
date	2012-04-30T13:19:35	Date and time of file creation	ontime3	2652.7999901772	Sum of GTIs [s]
revision	2	Processing version of data	ontime5	2652.7999901772	Sum of GTIs [s]
			ontime6	2652.7999901772	Sum of GTIs [s]
			ontime7	2652.7999901772	Sum of GTIs [s]
			ontime8	2652.7999901772	Sum of GTIs [s]
			l1events	217011	Number of level 1 events

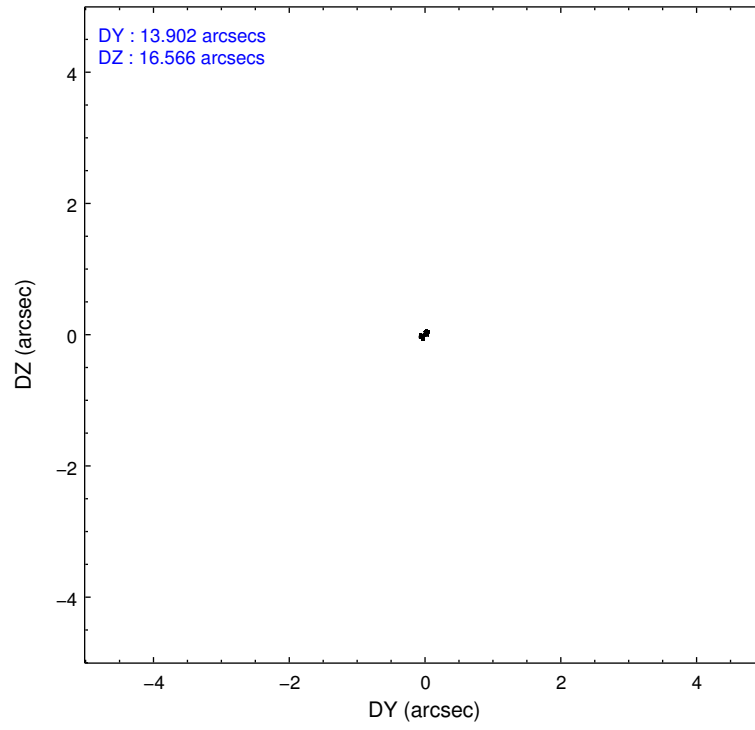
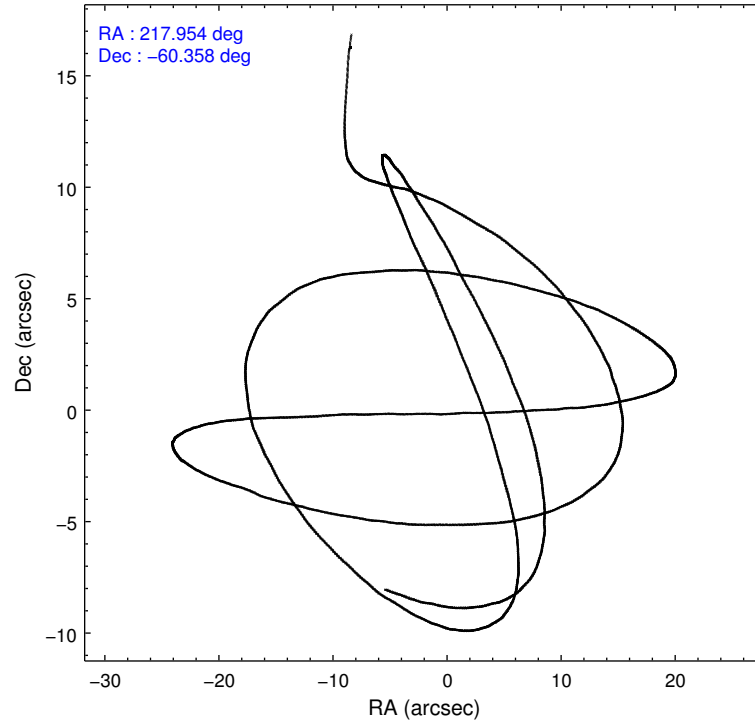
### 2.1.4 Events

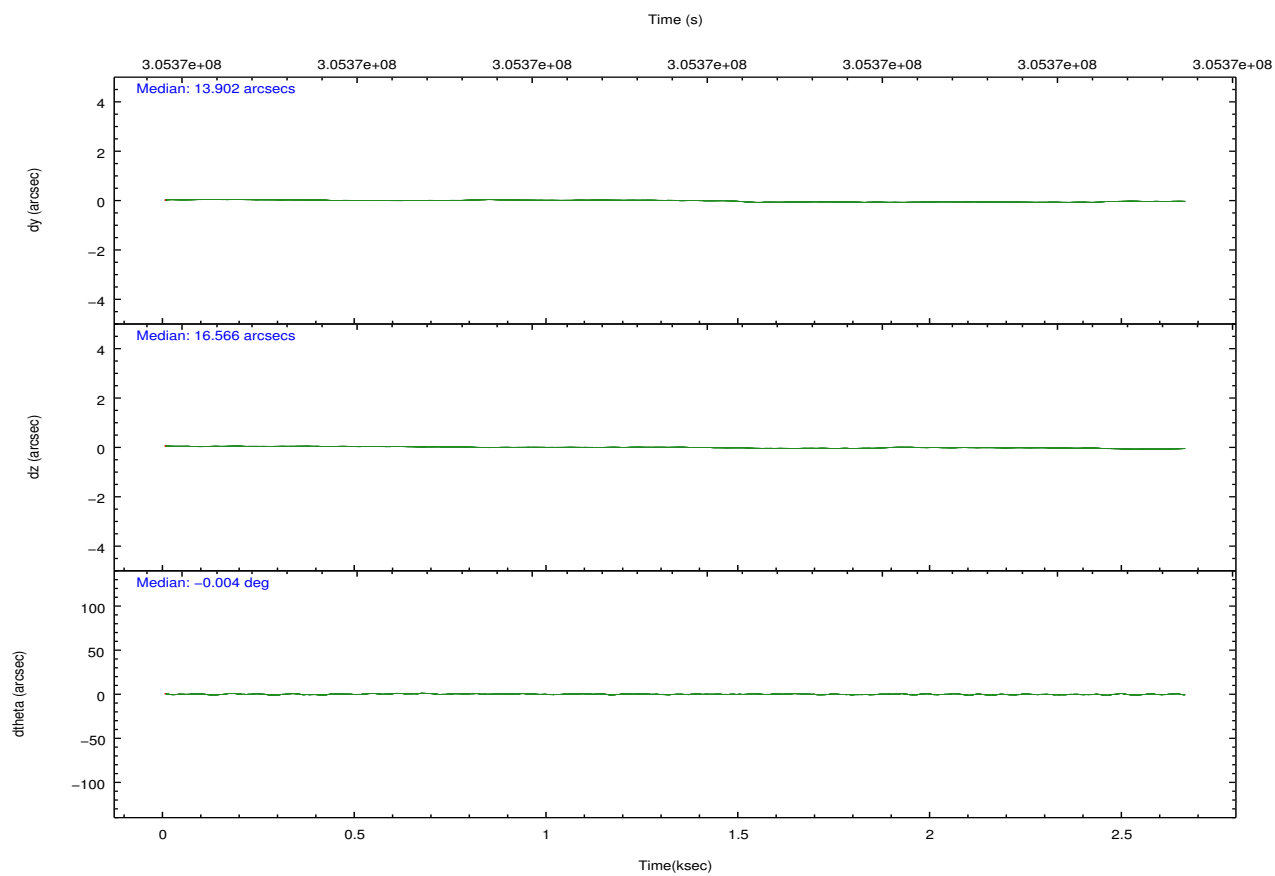
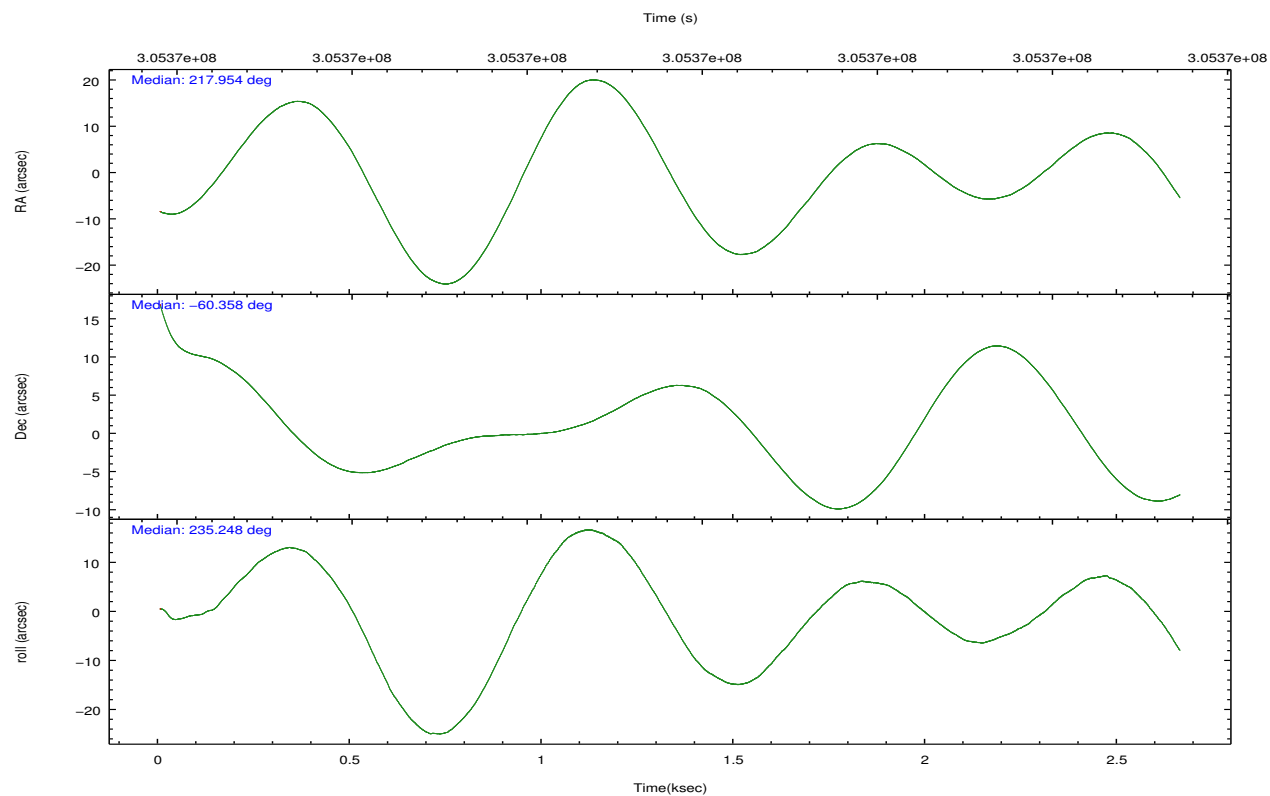
	ccd 2	ccd 3	ccd 5	ccd 6	ccd 7	ccd 8		ccd 2	ccd 3	ccd 5	ccd 6	ccd 7	ccd 8
level 1 events	31884	29595	46115	29792	40842	38783	grade 0 events	1702	1547	2567	1517	1538	2996
rejected events	28649	26554	27111	26621	25748	30473		5%	5%	5%	5%	3%	7%
rejected %	89%	89%	58%	89%	63%	78%	grade 1 events	25	31	132	8	29	34
								0%	0%	0%	0%	0%	0%
							grade 2 events	739	724	6637	804	3582	2150
								2%	2%	14%	2%	8%	5%
							grade 3 events	311	342	872	340	1480	957
								0%	1%	1%	1%	3%	2%
							grade 4 events	344	328	816	338	1597	901
								1%	1%	1%	1%	3%	2%
							grade 5 events	1131	1388	3291	1383	3702	1861
								3%	4%	7%	4%	9%	4%
							grade 6 events	633	649	11102	672	9267	2462
								1%	2%	24%	2%	22%	6%
							grade 7 events	26999	24586	20698	24730	19647	27422
								84%	83%	44%	83%	48%	70%

## 2.2 Compared Parameters

Parameter	Planned	Actual	Parameter	Planned	Actual
Instrument	ACIS	ACIS	Obspar format version number	7	7
Detector	ACIS-235678	ACIS-235678	Obspar file type	PREDICTED	ACTUAL
Grating	NONE	NONE	Obspar update status	NONE	UPDATED
Data mode	FAINT	FAINT	CCD I0 on	N	N
Observation mode	POINTING	POINTING	CCD I1 on	N	N
[deg] Pointing RA	217.957457	217.9539260593963	CCD I2 on	O2	Y
[deg] Pointing Dec	-60.330561	-60.35770904104909	CCD I3 on	O3	Y
[deg] Pointing Roll	235.099124	235.2526995258104	CCD S0 on	N	N
[mm] SIM focus pos	-0.684267	-0.6828225247311905	CCD S1 on	O1	Y
[mm] SIM defocus	0	0.001444936568705701	CCD S2 on	O5	Y
[mm] SIM translation stage pos	-190.132523	-190.1400660498719	CCD S3 on	Y	Y
[mm] SIM translation stage offset	0	0.00754346686406393	CCD S4 on	O4	Y
[s] Observation start time (MET)	305366246.184000	305364970.79972	CCD S5 on	N	N
Observation start date	2007-09-05T07:56:21	2007-09-05T07:36:10	Number of optional ACIS chips dropped	0	0
[s] Observation end time (MET)	305368746.184000	305369620.19994	On-chip summing requested	N	N
Observation end date	2007-09-05T08:38:01	2007-09-05T08:53:40	Subarray requested	NONE	NONE
Read mode	TIMED	TIMED	Alternating exposures requested	N	N
			[s] Primary exposure time	0.000000	3.2

## 2.3 Aspect





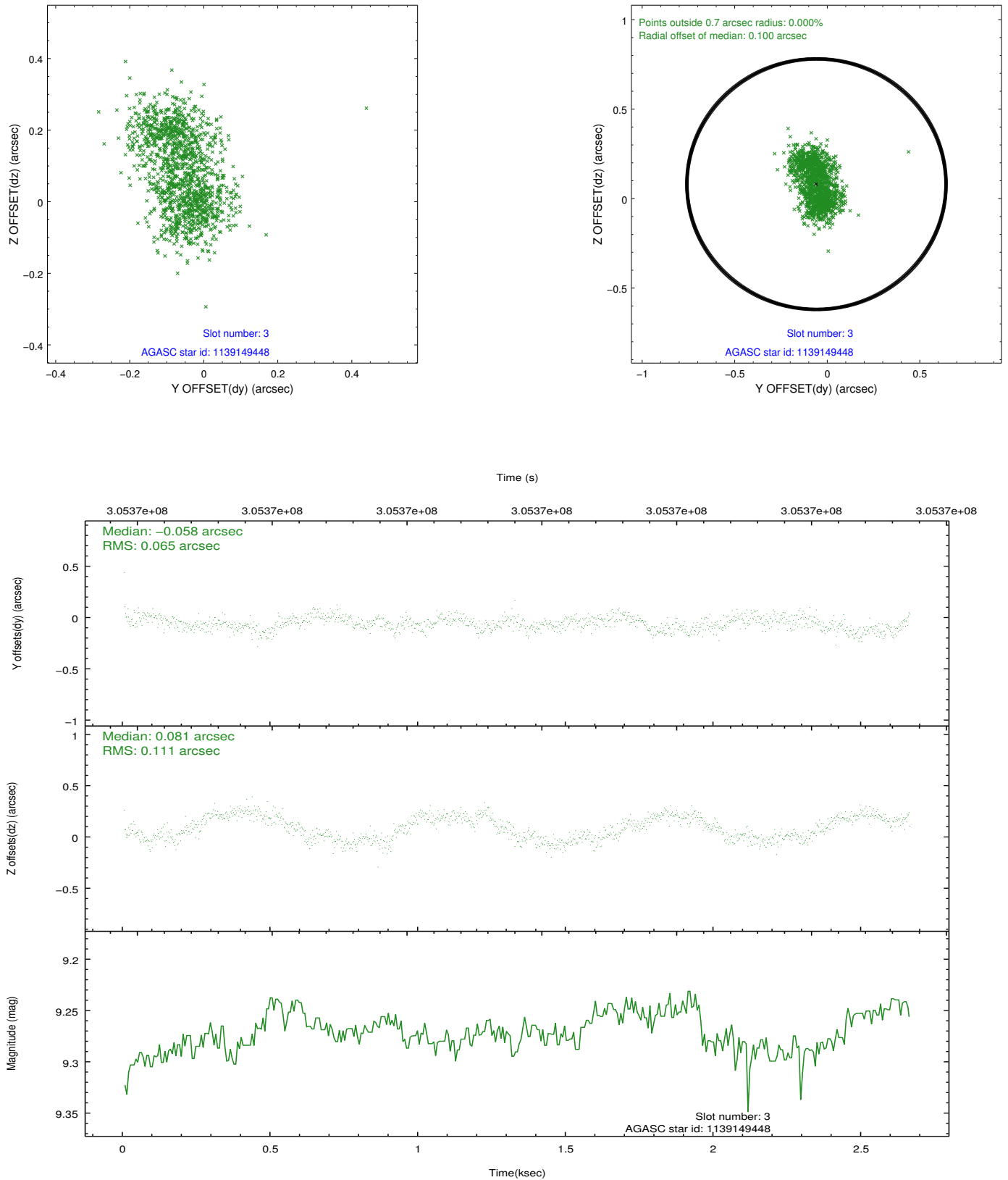
### Slot Statistics

slot	status	id	mag	n_pts	med_dy	med_dz	dr1	dr2	ra	dec	mean_y	mean_z
0	FID	ACIS-S-2	7.09	649	-0.048	-0.039	0.008	0.013	0.000000	0.000000	-766.89	-1738.02
1	FID	ACIS-S-4	7.19	649	0.187	0.034	0.007	0.014	0.000000	0.000000	2145.53	168.00
2	FID	ACIS-S-5	7.22	649	-0.171	0.014	0.008	0.014	0.000000	0.000000	-1816.73	164.44
3	GUIDE	1139149448	9.27	1298	-0.058	0.081	0.140	0.204	218.205634	-59.960157	-1347.84	-395.59
4	GUIDE	1139171280	9.37	1297	-0.194	-0.076	0.089	0.146	218.060123	-59.634097	-2163.08	-1281.81
5	GUIDE	1180435968	8.76	1298	0.297	-0.053	0.091	0.145	216.447722	-60.494423	2040.47	-1841.05
6	GUIDE	1180607792	9.26	1298	0.040	-0.063	0.092	0.154	218.783899	-60.204433	-1208.10	956.49
7	GUIDE	1139171368	9.23	1297	-0.089	0.106	0.092	0.147	218.581220	-59.799114	-2211.00	-164.43

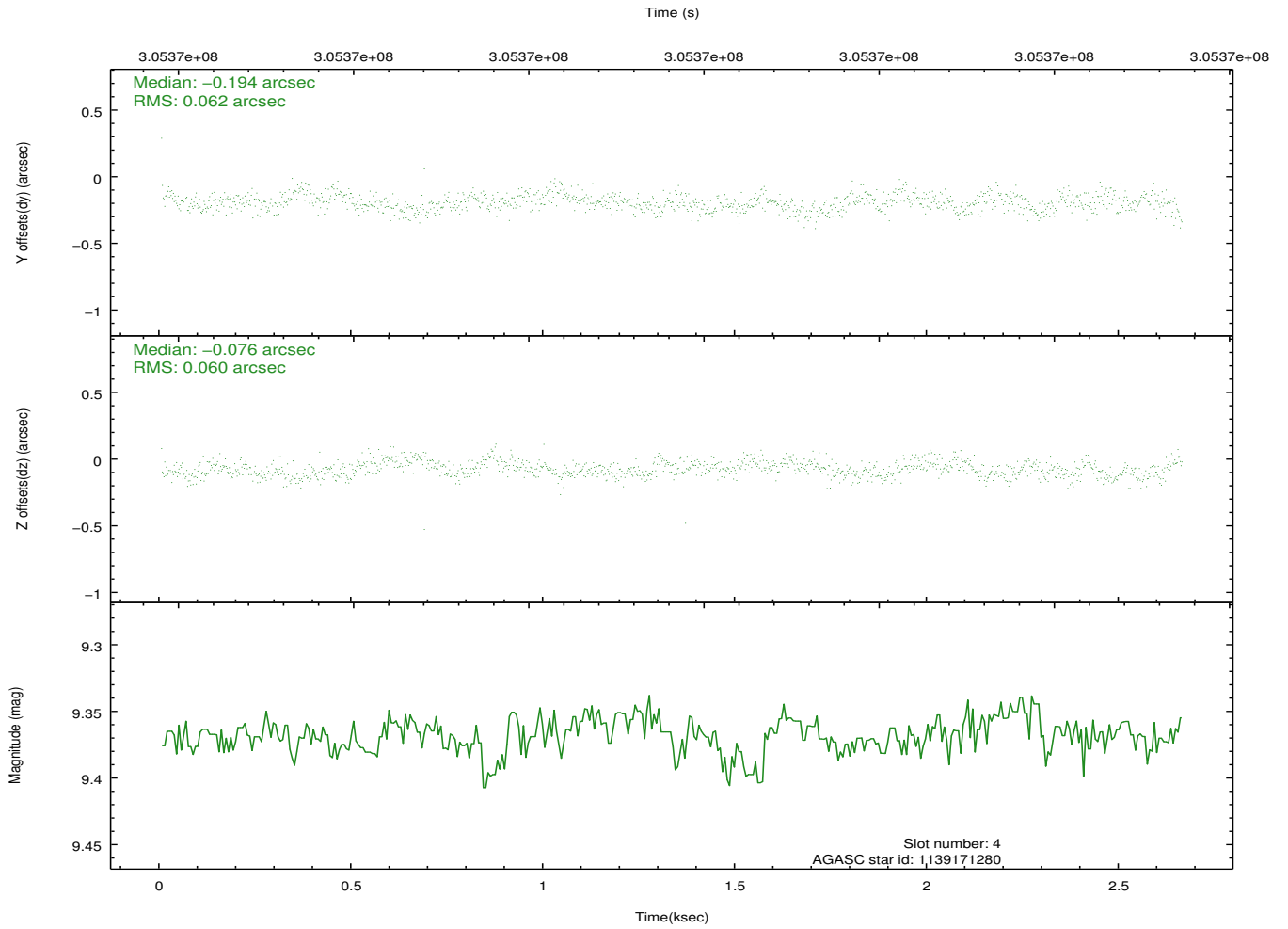
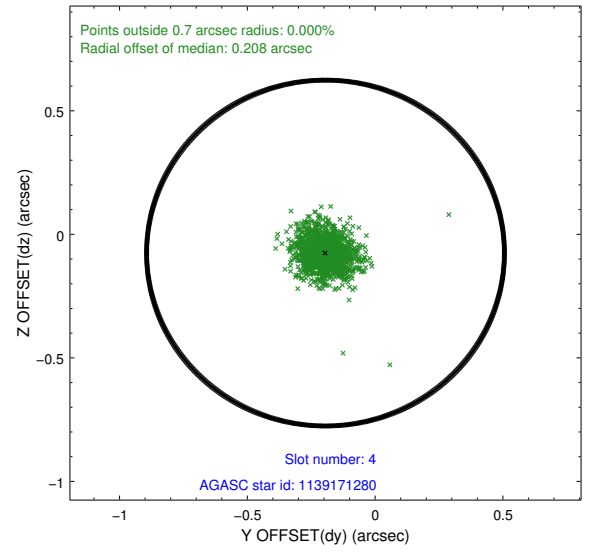
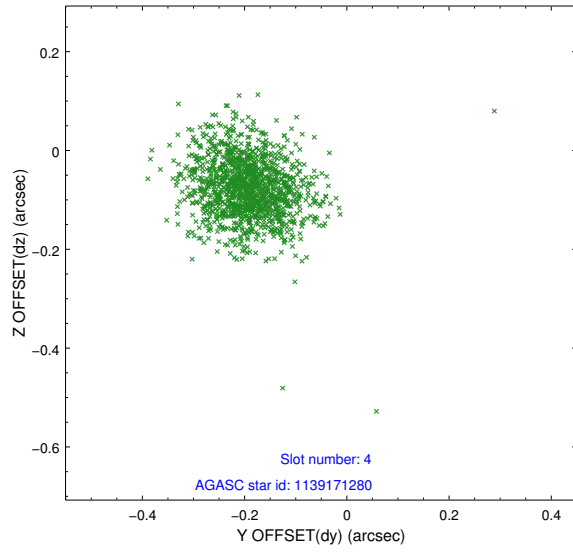


## 2.4 Star Slots

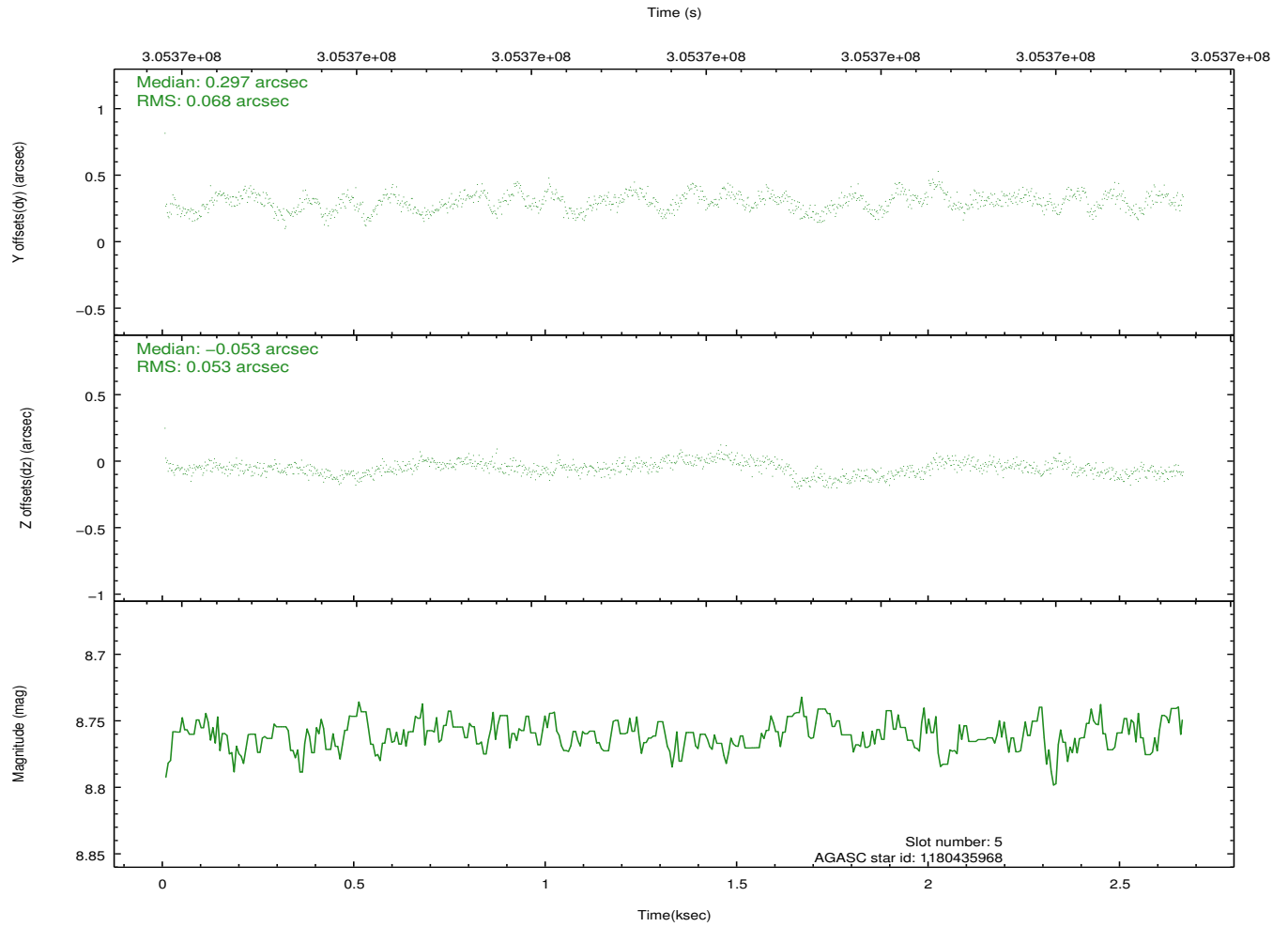
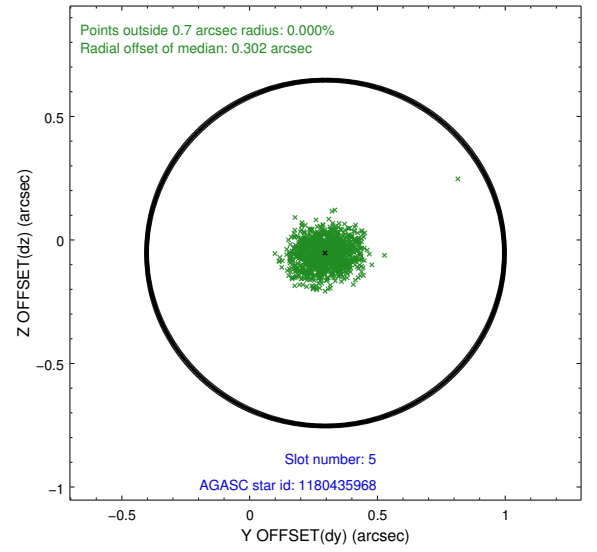
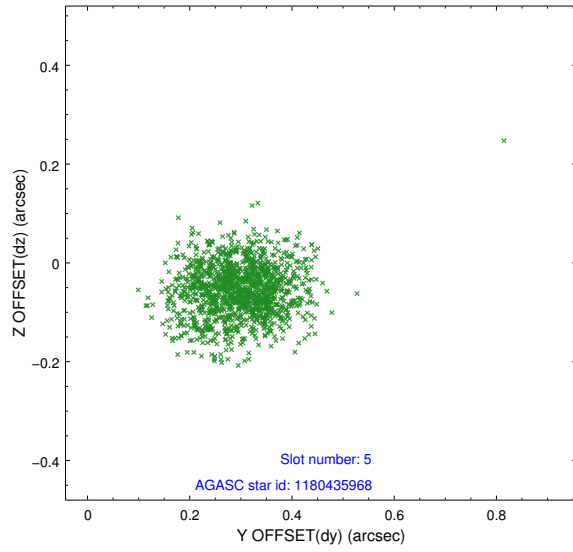
### 2.4.1 Slot 3



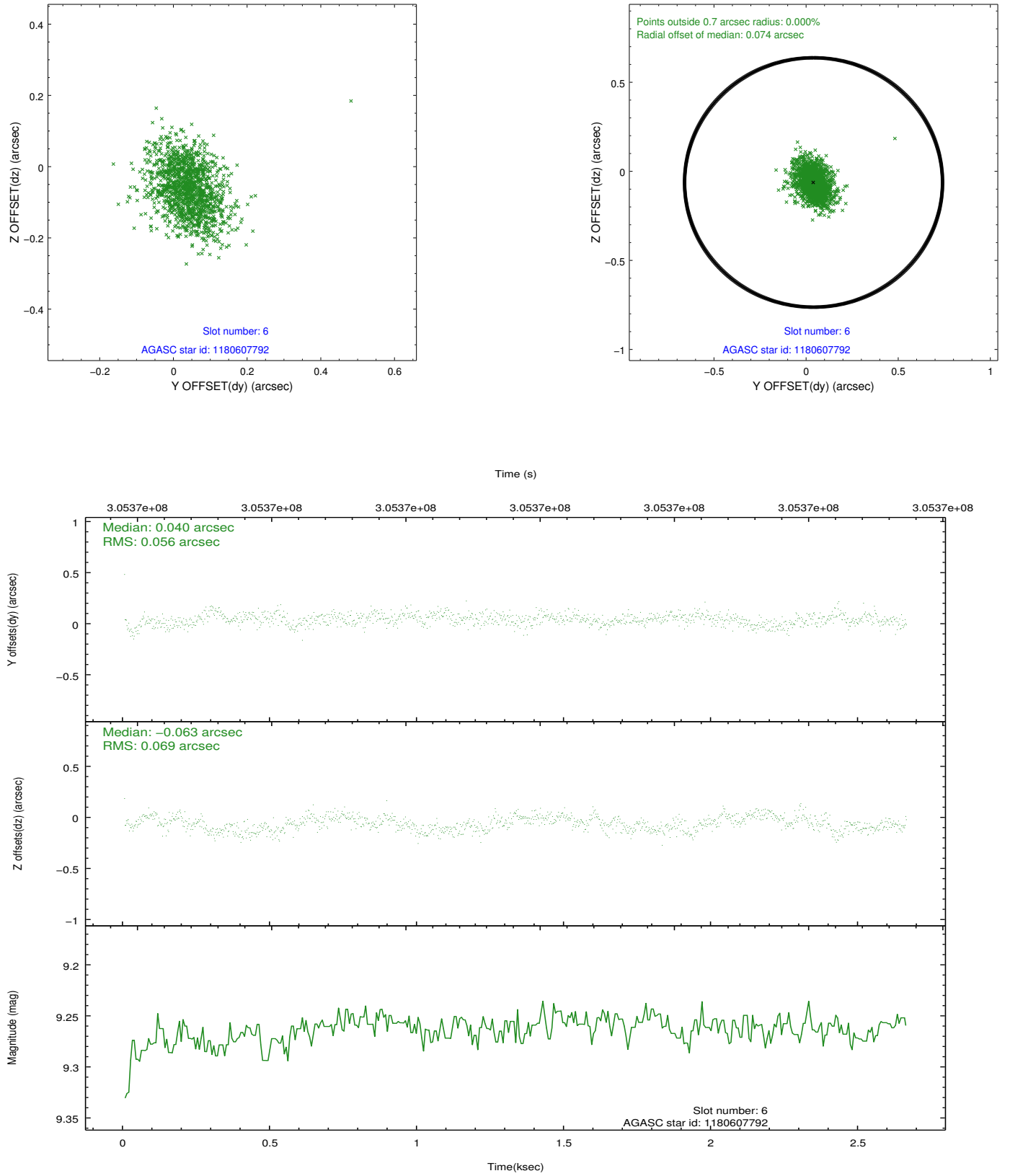
## 2.4.2 Slot 4



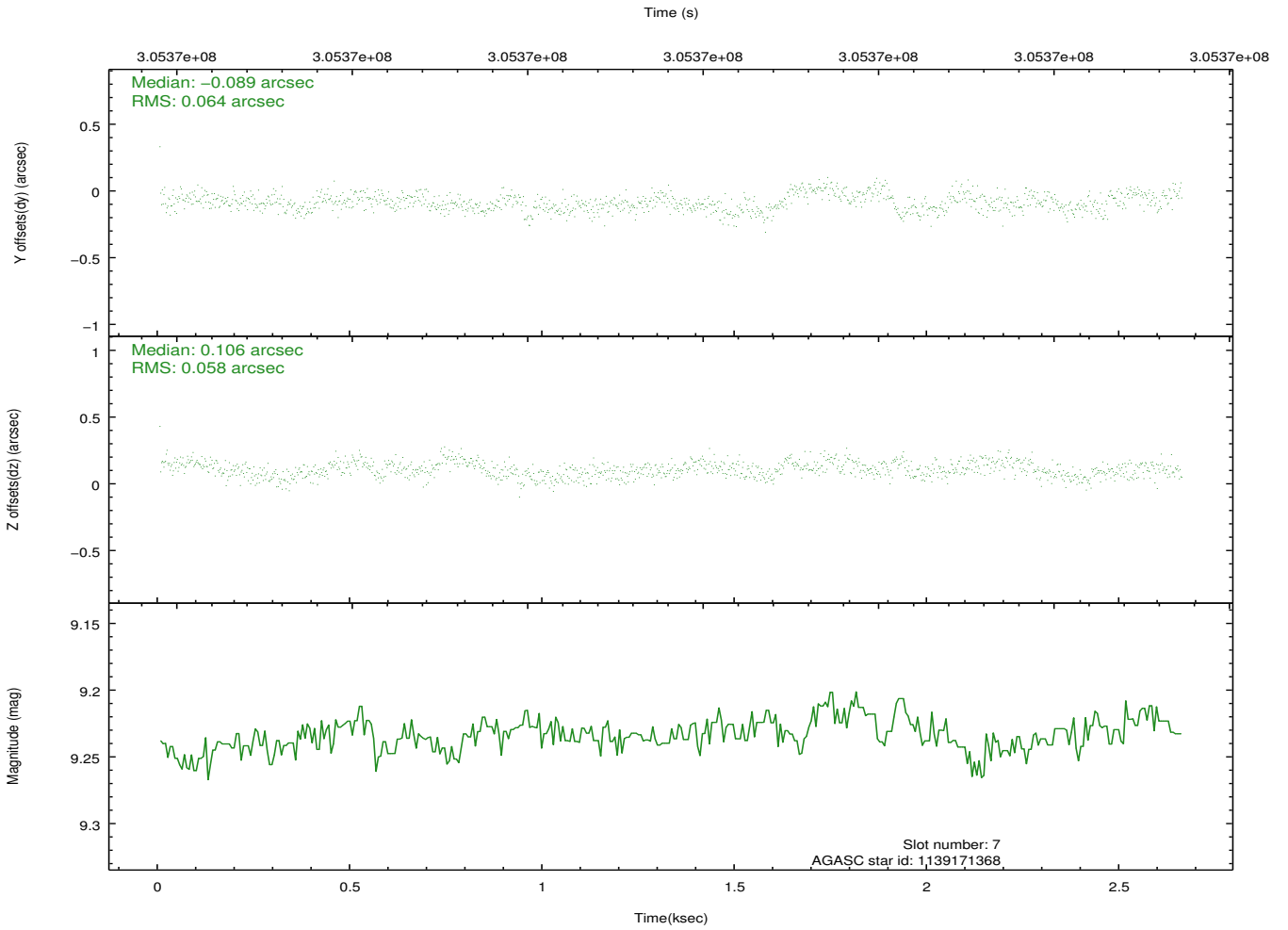
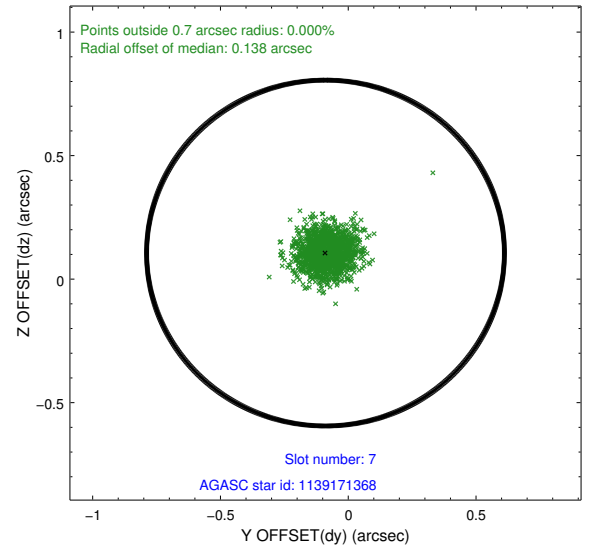
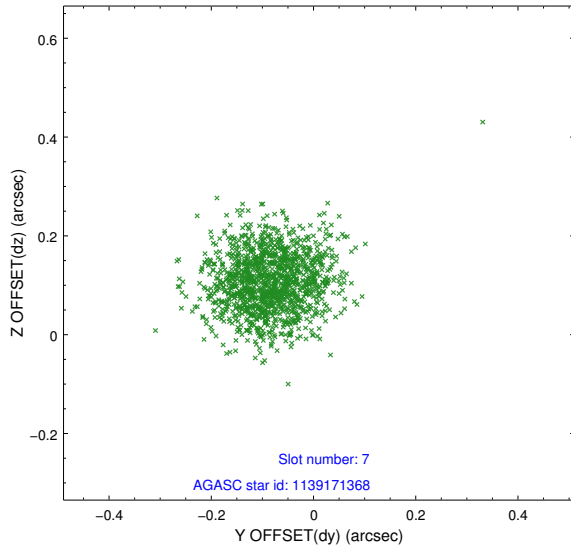
### 2.4.3 Slot 5



## 2.4.4 Slot 6

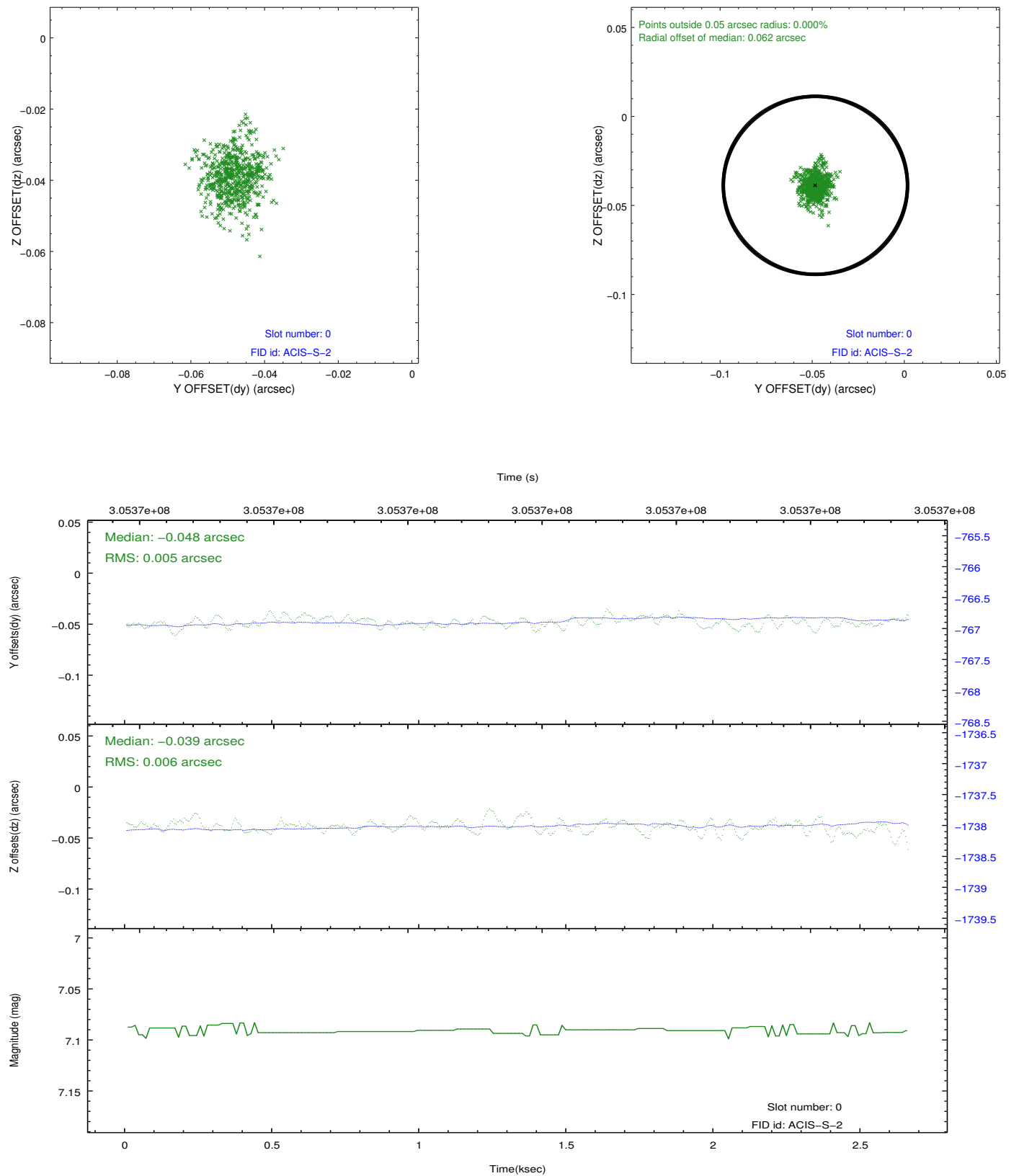


## 2.4.5 Slot 7

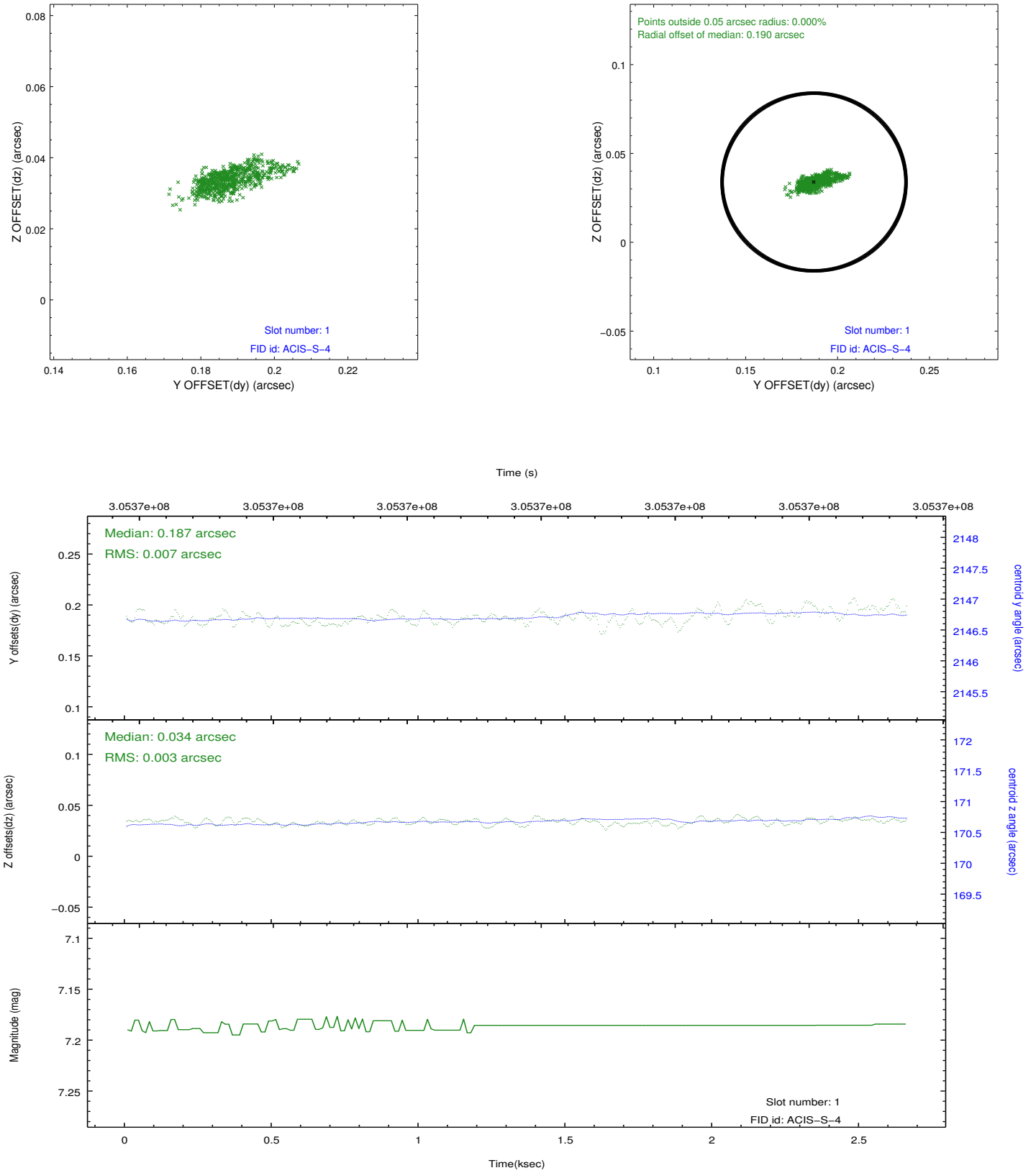


## 2.5 FID Slots

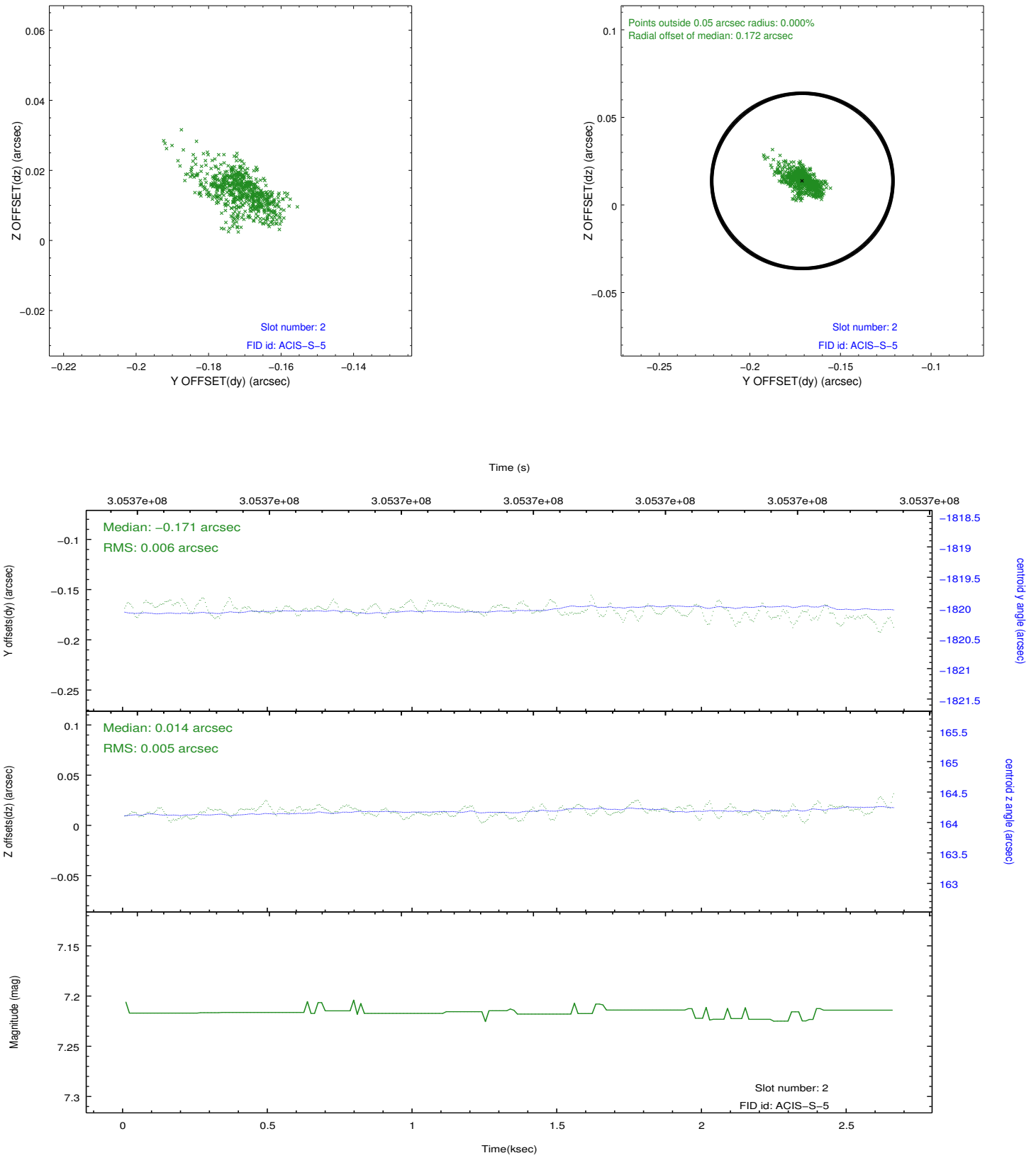
### 2.5.1 Slot 0



## 2.5.2 Slot 1



### 2.5.3 Slot 2





## A Summary

### A.1 Status

V&V Scientist	Jen Lauer
V&V Date (YYYY-MM-DD)	2012.05.02
V&V Edition	1
V&V Disposition and Status	OK
V&V Charge Time	2.65279999

### A.2 Comments