

V&V Reference Report

L2 ASCDS Version : 8.4.4

Observation 8238 - L2 Version 2
Chandra X-Ray Center

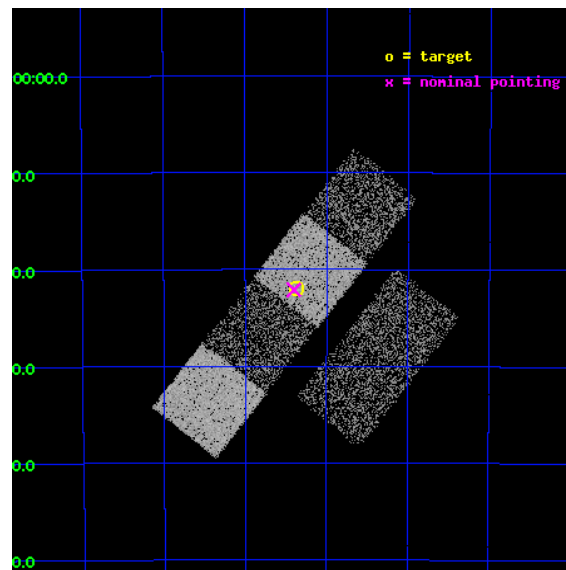
L2 Processing Date : Apr 26 2012

Contents

1	Front	2
2	OBI	3
2.1	OBI	3
2.1.1	Images	3
2.1.2	Bias	3
2.1.3	Parameters	4
2.1.4	Events	4
2.2	Compared Parameters	5
2.3	Aspect	6
2.4	Star Slots	9
2.4.1	Slot 3	9
2.4.2	Slot 4	10
2.4.3	Slot 5	11
2.4.4	Slot 6	12
2.4.5	Slot 7	13
2.5	FID Slots	14
2.5.1	Slot 0	14
2.5.2	Slot 1	15
2.5.3	Slot 2	16
A	Summary	17
A.1	Status	17
A.2	Comments	17

1 Front

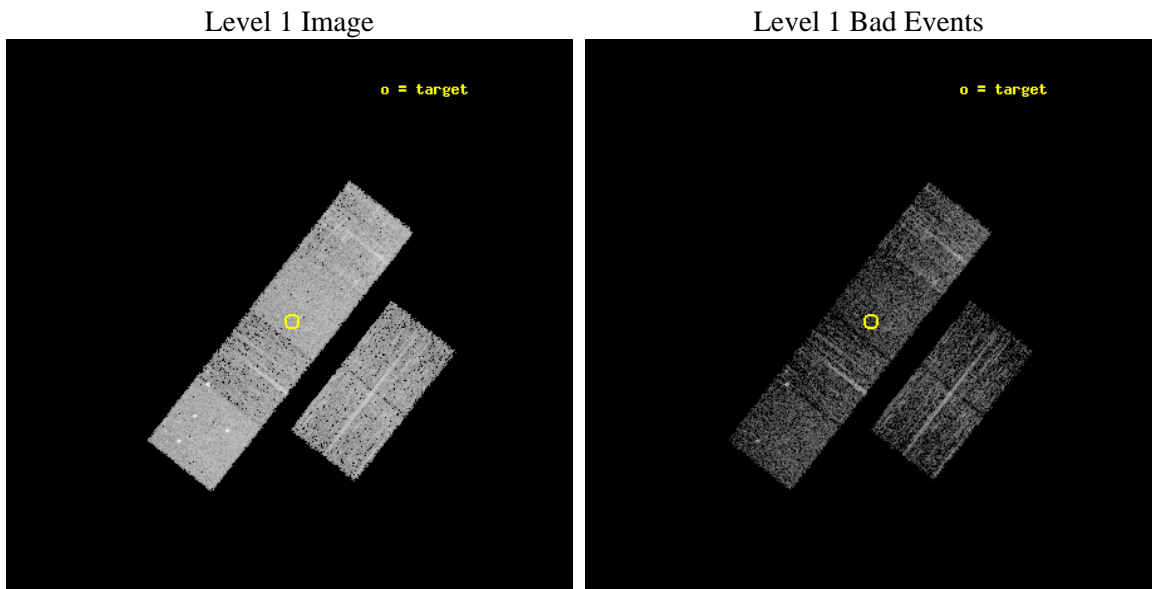
seq_num	900728	Sequence number
obs_id	8238	Observation id
title	Chandra Identification of Compact ASCA Galactic Objects - Part II	
observer	Dr. Stephen Murray	Principal investigator
object	AX J154122-5522	Source name
dtcycle	0	
cycle	P	events from which exps? Prim/Second/Both
ra_targ	235.342083	Observer's specified target RA [deg]
dec_targ	-55.367	Observer's specified target Dec [deg]
ra_nom	235.35035994002	Nominal RA [deg]
dec_nom	-55.3685086608	Nominal Dec [deg]
roll_nom	308.18552055532	Nominal Roll [deg]
revision	2	Processing version of data
ontime	1958.399992764	Sum of GTIs [s]
livetime	1933.6015528487	Livetime [s]
ontime2	1958.399992764	Sum of GTIs [s]
ontime3	1958.399992764	Sum of GTIs [s]
ontime5	1958.399992764	Sum of GTIs [s]
ontime6	1958.399992764	Sum of GTIs [s]
ontime7	1958.399992764	Sum of GTIs [s]
ontime8	1955.1589924097	Sum of GTIs [s]
l2events	31847	Number of level 2 events



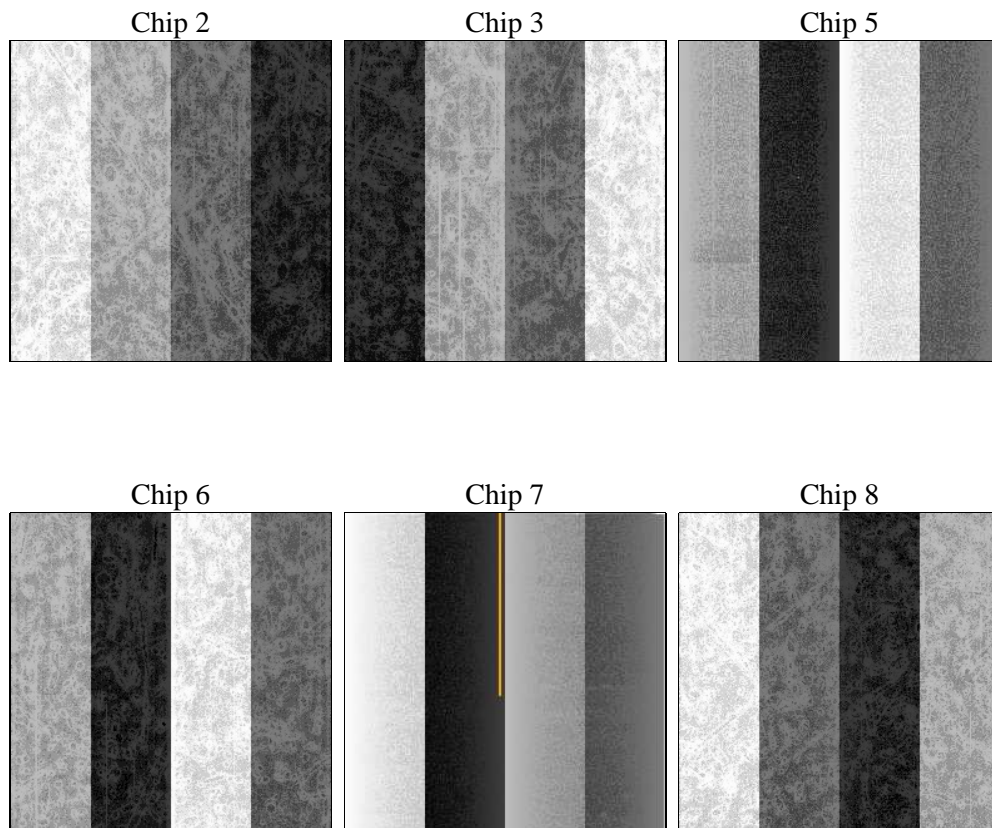
2 OBI

2.1 OBI

2.1.1 Images



2.1.2 Bias



2.1.3 Parameters

obi_num	0	Obi number	sched_exp_time	2200.000000	[s] Scheduled observation exposure time
ascdsver	8.4.4	Processing system revision	ontime	1958.399992764	Sum of GTIs [s]
caldbver	4.4.9	 	ontime2	1958.399992764	Sum of GTIs [s]
date	2012-04-27T01:21:53	Date and time of file creation	ontime3	1958.399992764	Sum of GTIs [s]
revision	2	Processing version of data	ontime5	1958.399992764	Sum of GTIs [s]
			ontime6	1958.399992764	Sum of GTIs [s]
			ontime7	1958.399992764	Sum of GTIs [s]
			ontime8	1955.1589924097	Sum of GTIs [s]
			l1events	142216	Number of level 1 events

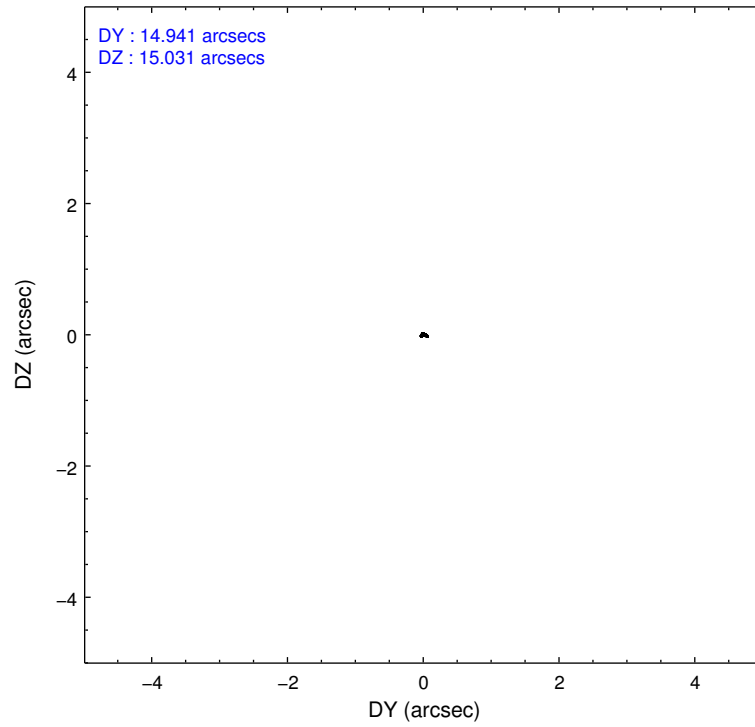
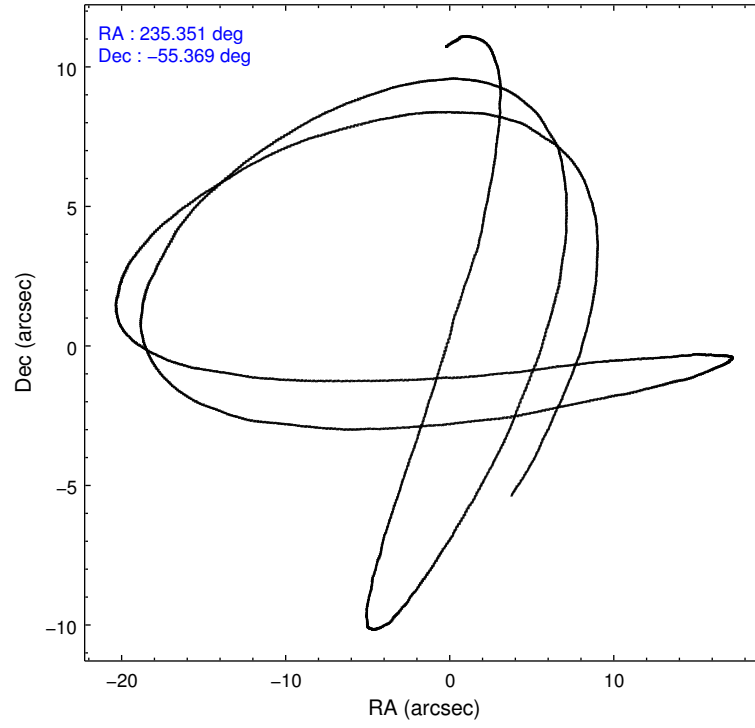
2.1.4 Events

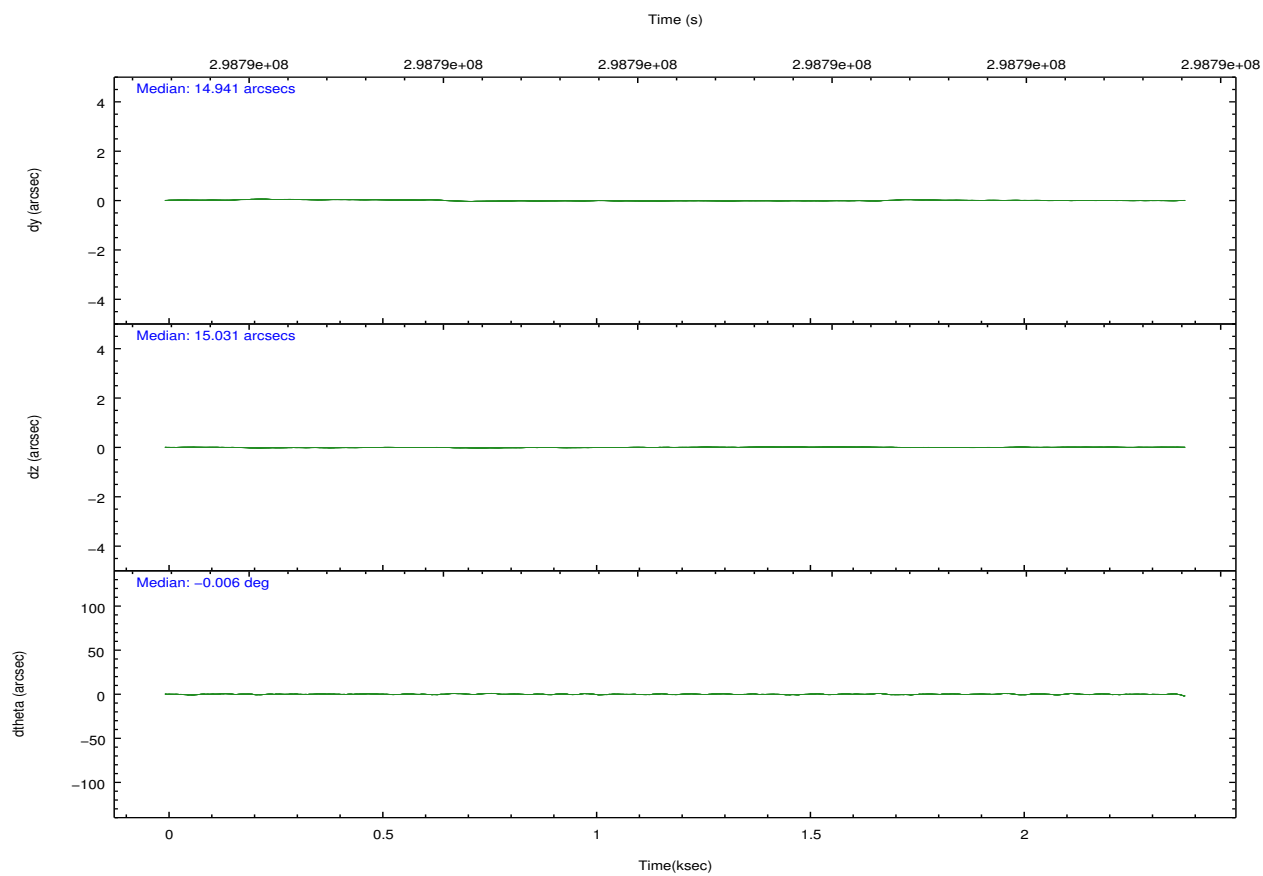
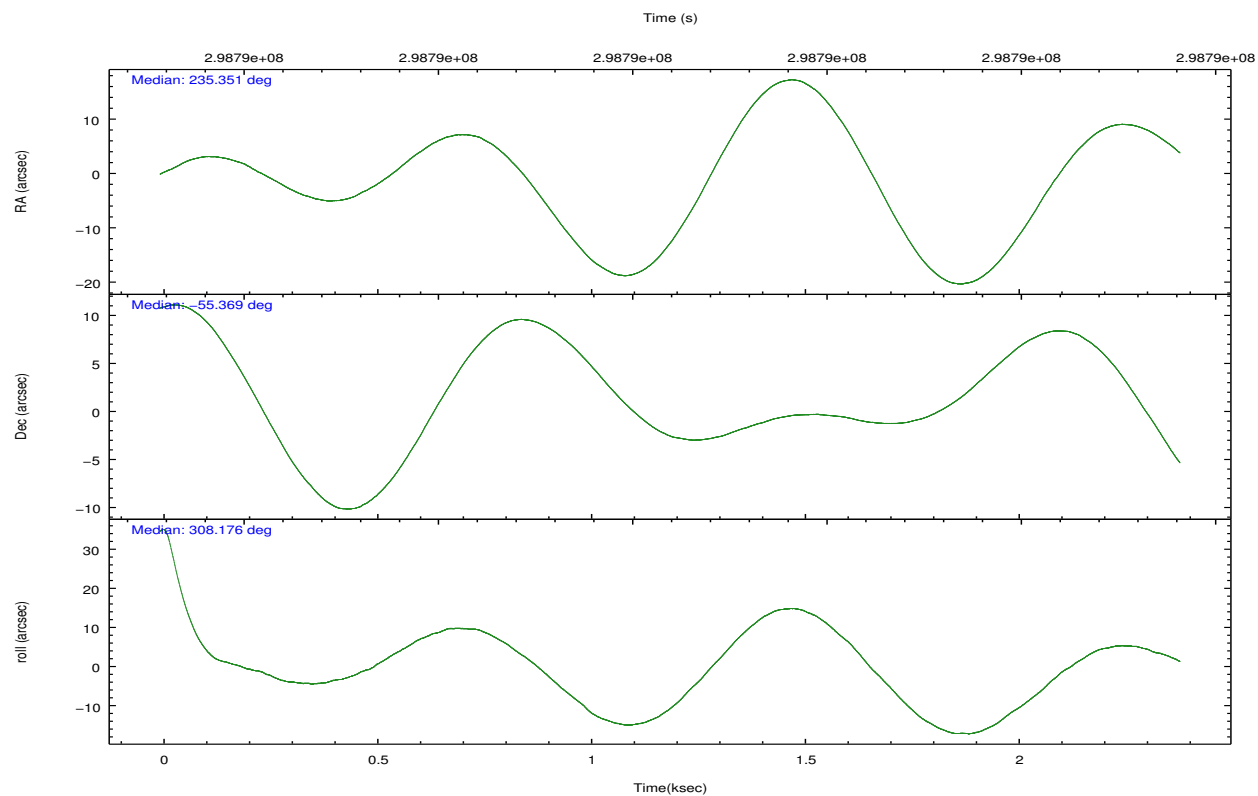
	ccd 2	ccd 3	ccd 5	ccd 6	ccd 7	ccd 8		ccd 2	ccd 3	ccd 5	ccd 6	ccd 7	ccd 8
level 1 events	20627	17833	30707	19103	26212	27734	grade 0 events	1002	1013	1757	936	933	1754
rejected events	18341	15592	16234	16780	15177	22415		4%	5%	5%	4%	3%	6%
rejected %	88%	87%	52%	87%	57%	80%	grade 1 events	12	13	132	10	26	41
								0%	0%	0%	0%	0%	0%
							grade 2 events	518	391	4231	475	2274	1113
								2%	2%	13%	2%	8%	4%
							grade 3 events	173	220	537	212	993	580
								0%	1%	1%	1%	3%	2%
							grade 4 events	214	240	488	223	924	538
								1%	1%	1%	1%	3%	1%
							grade 5 events	730	844	2218	933	2433	1107
								3%	4%	7%	4%	9%	3%
							grade 6 events	380	383	7472	482	5925	1351
								1%	2%	24%	2%	22%	4%
							grade 7 events	17598	14729	13872	15832	12704	21250
								85%	82%	45%	82%	48%	76%

2.2 Compared Parameters

Parameter	Planned	Actual	Parameter	Planned	Actual
Instrument	ACIS	ACIS	Obspar format version number	7	7
Detector	ACIS-235678	ACIS-235678	Obspar file type	PREDICTED	ACTUAL
Grating	NONE	NONE	Obspar update status	NONE	UPDATED
Data mode	FAINT	FAINT	CCD I0 on	N	N
Observation mode	POINTING	POINTING	CCD I1 on	N	N
[deg] Pointing RA	235.305196	235.3503599400167	CCD I2 on	O2	Y
[deg] Pointing Dec	-55.358853	-55.36850866079974	CCD I3 on	O3	Y
[deg] Pointing Roll	307.991699	308.1855205553177	CCD S0 on	N	N
[mm] SIM focus pos	-0.684267	-0.6828225247311905	CCD S1 on	O1	Y
[mm] SIM defocus	0	0.001444936568705701	CCD S2 on	O5	Y
[mm] SIM translation stage pos	-190.132523	-190.1400660498719	CCD S3 on	Y	Y
[mm] SIM translation stage offset	0	0.00754346686406393	CCD S4 on	O4	Y
[s] Observation start time (MET)	298787087.184000	298786660.90921	CCD S5 on	N	N
Observation start date	2007-06-21T04:23:42	2007-06-21T04:17:40	Number of optional ACIS chips dropped	0	0
[s] Observation end time (MET)	298789287.184000	298789930.65937	On-chip summing requested	N	N
Observation end date	2007-06-21T05:00:22	2007-06-21T05:12:10	Subarray requested	NONE	NONE
Read mode	TIMED	TIMED	Alternating exposures requested	N	N
			[s] Primary exposure time	0.000000	3.2

2.3 Aspect



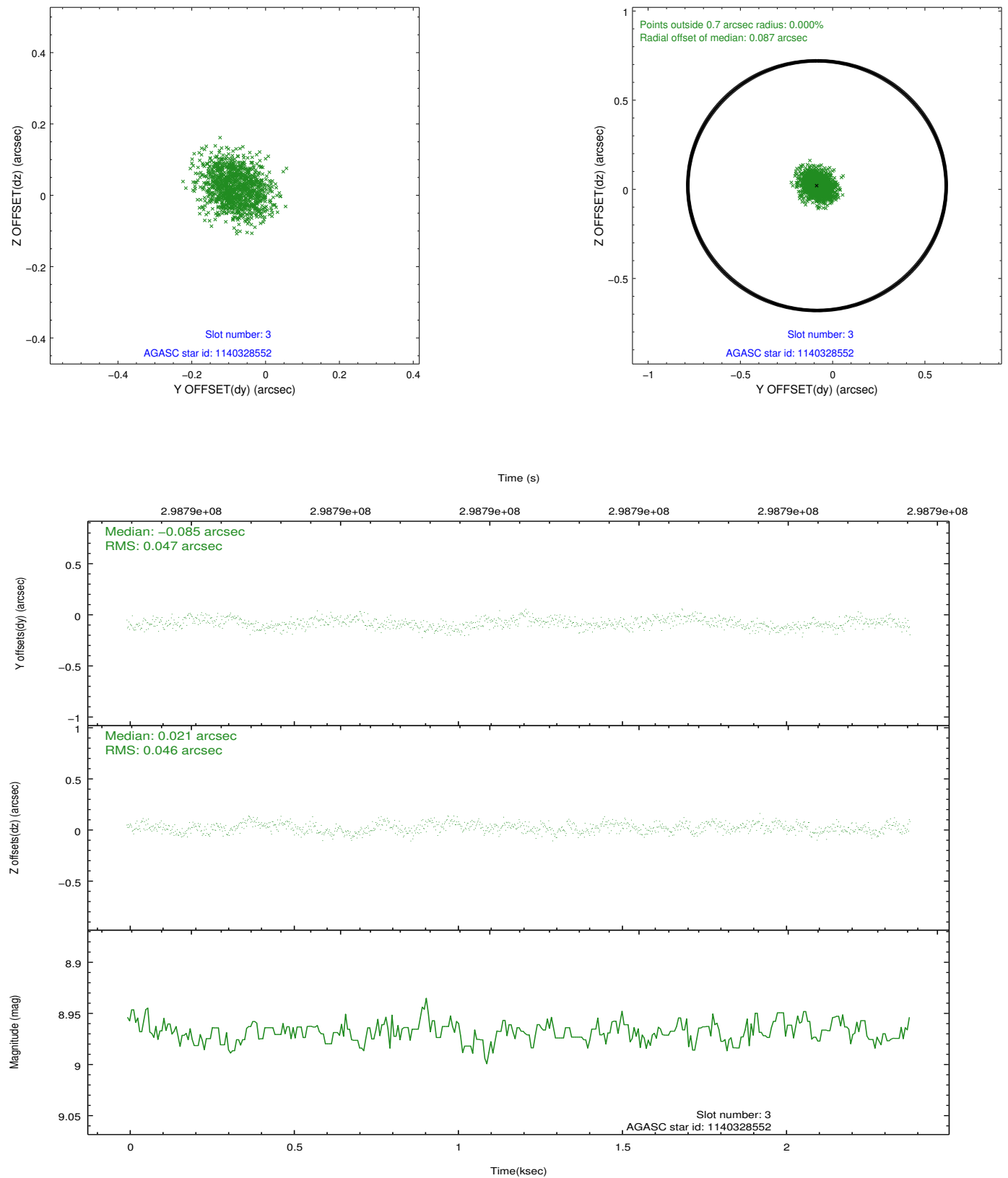


Slot Statistics

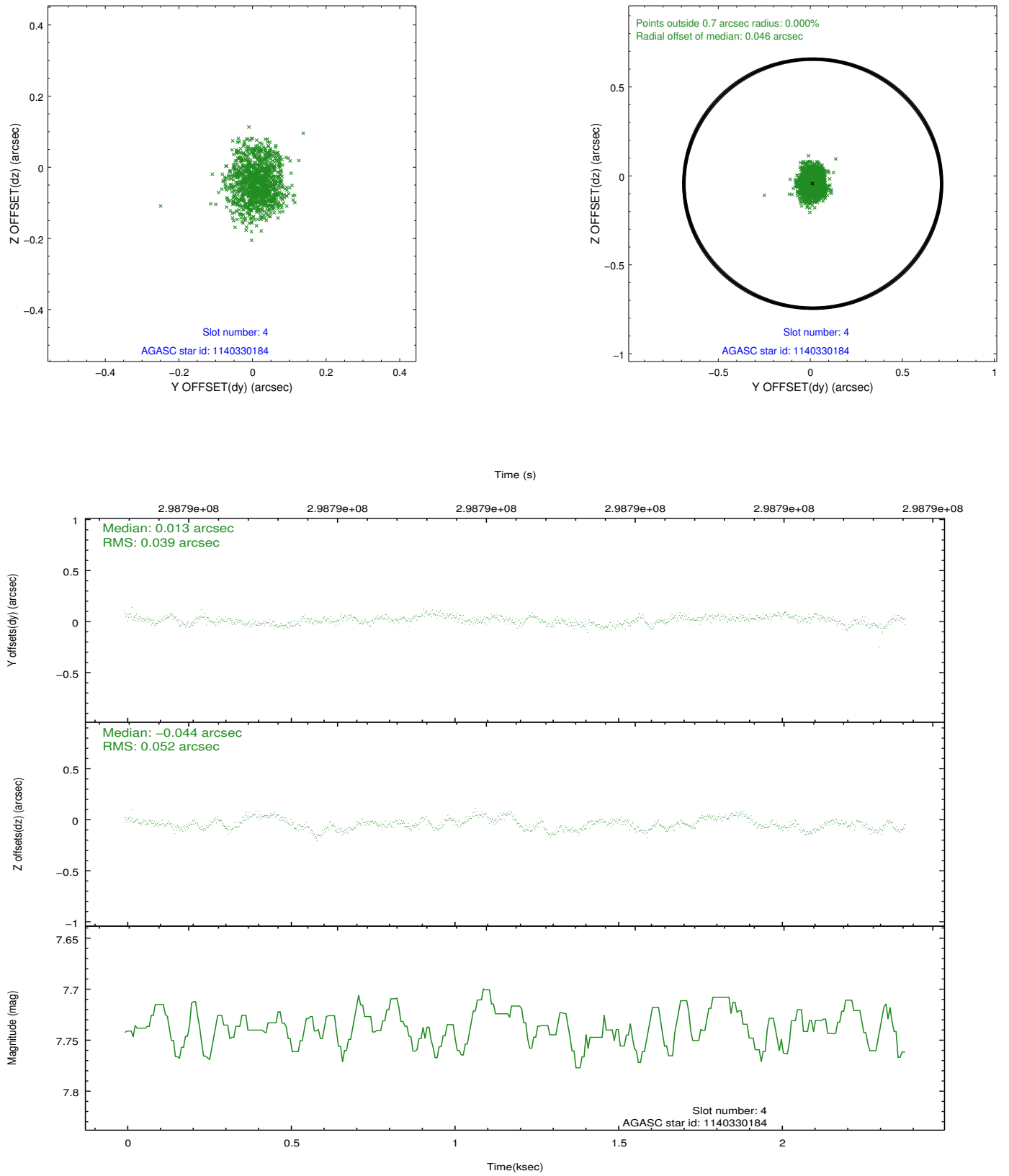
slot	status	id	mag	n_pts	med_dy	med_dz	dr1	dr2	ra	dec	mean_y	mean_z
0	FID	ACIS-S-1	7.18	582	0.018	-0.053	0.007	0.010	0.000000	0.000000	928.14	-1732.09
1	FID	ACIS-S-4	7.20	582	0.176	0.033	0.006	0.010	0.000000	0.000000	2147.20	169.35
2	FID	ACIS-S-5	7.22	582	-0.220	0.033	0.005	0.010	0.000000	0.000000	-1817.49	166.00
3	GUIDE	1140328552	8.97	1164	-0.085	0.021	0.070	0.112	236.070419	-55.504029	1379.27	902.14
4	GUIDE	1140330184	7.74	1165	0.013	-0.044	0.070	0.108	236.200034	-55.100922	413.44	2016.49
5	GUIDE	1140333696	8.34	1164	0.077	0.027	0.063	0.102	234.616228	-55.826377	475.66	-2137.18
6	GUIDE	1140333808	8.58	1165	0.124	-0.068	0.071	0.126	235.205997	-55.090200	-886.89	431.34
7	GUIDE	1140334912	9.69	1163	-0.139	0.061	0.146	0.233	234.670399	-55.799141	463.04	-1991.80

2.4 Star Slots

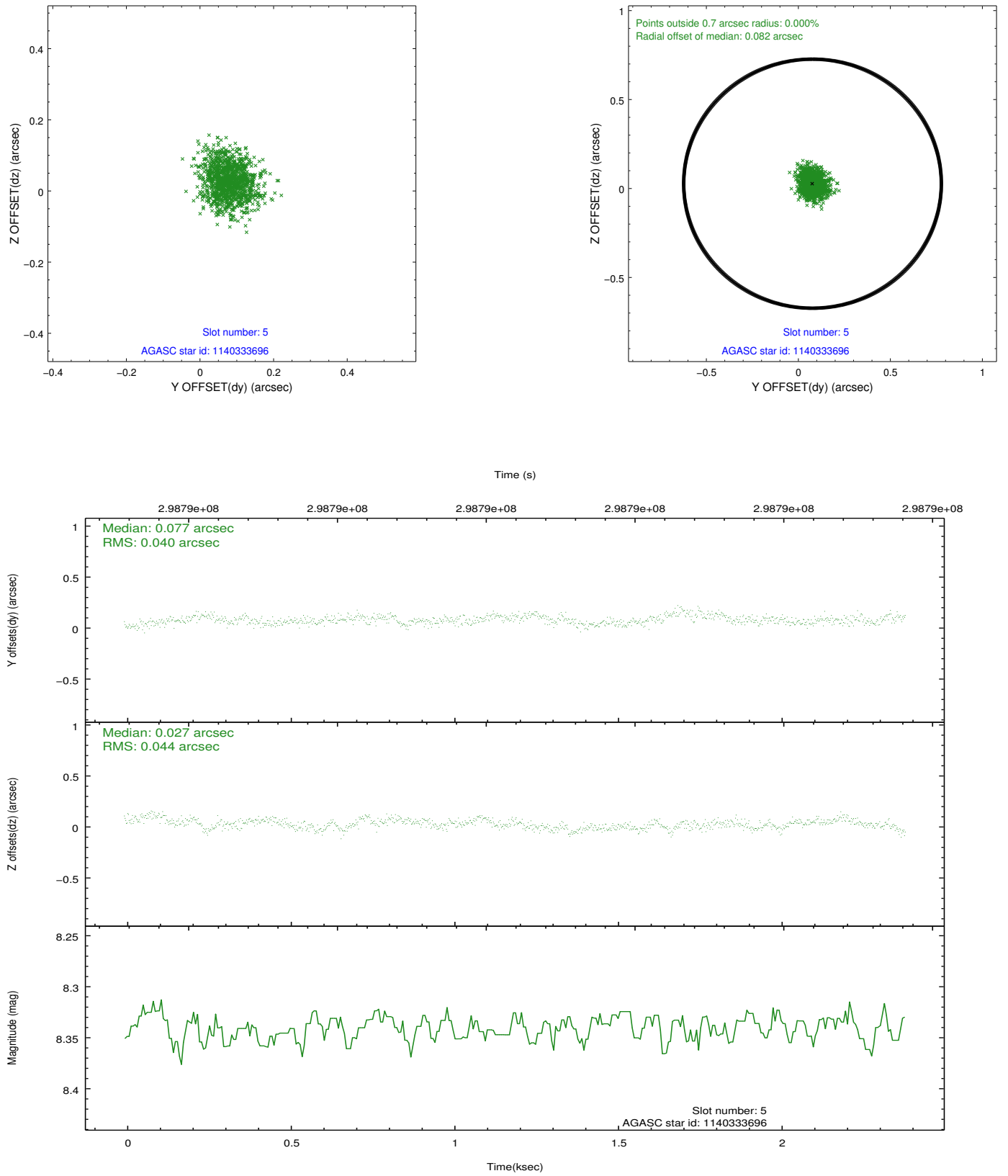
2.4.1 Slot 3



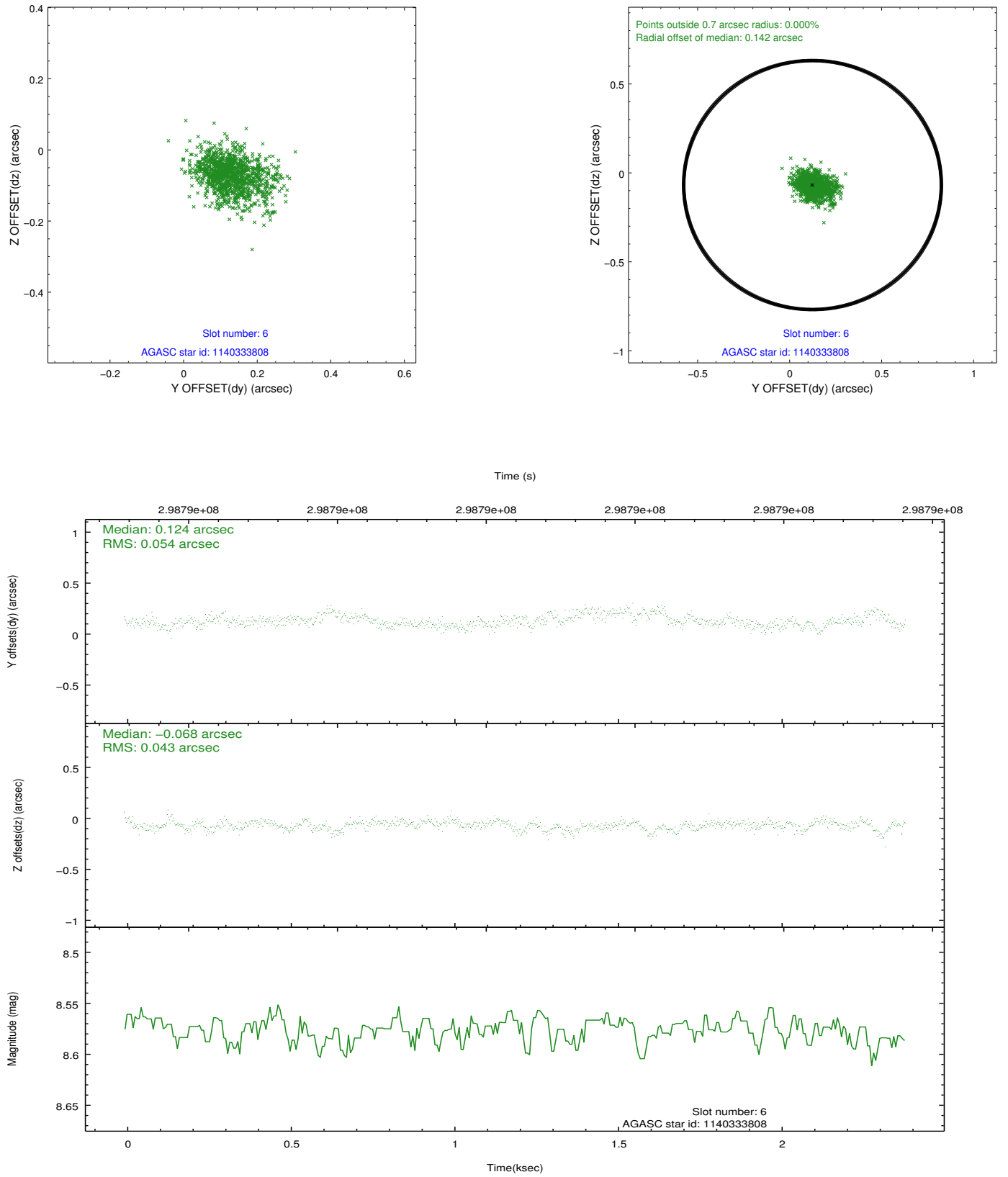
2.4.2 Slot 4



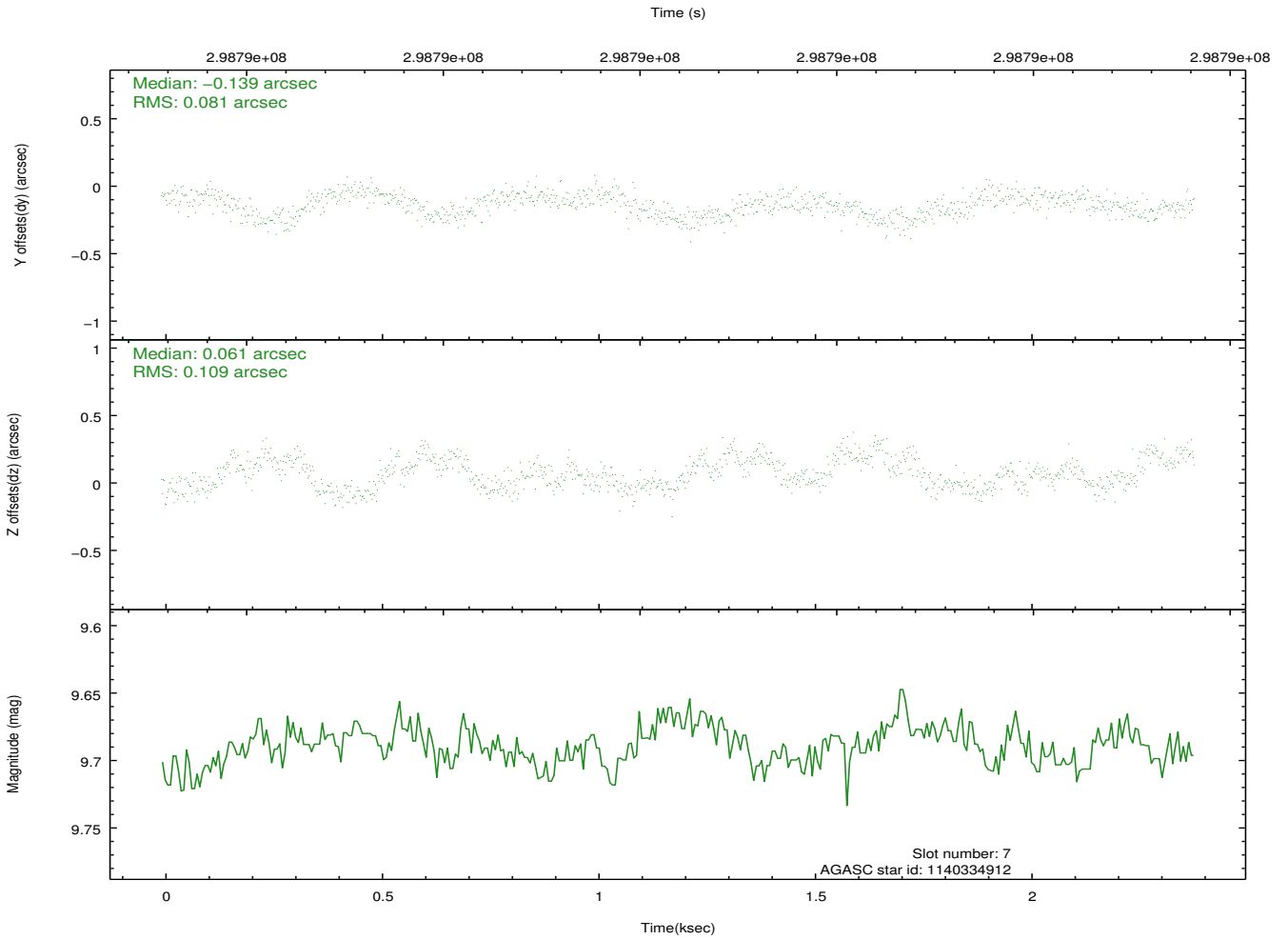
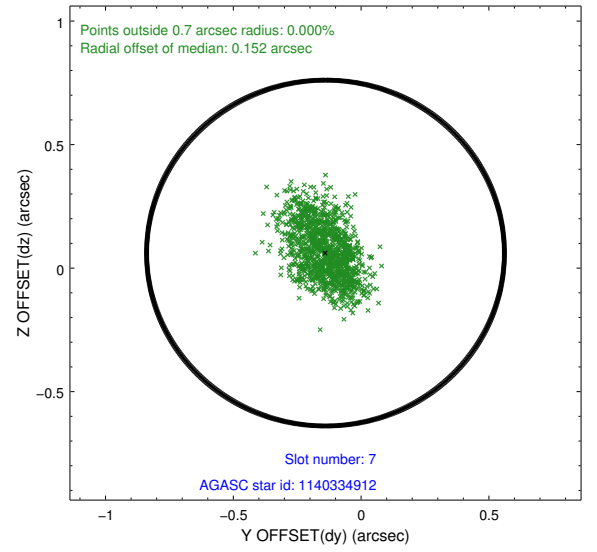
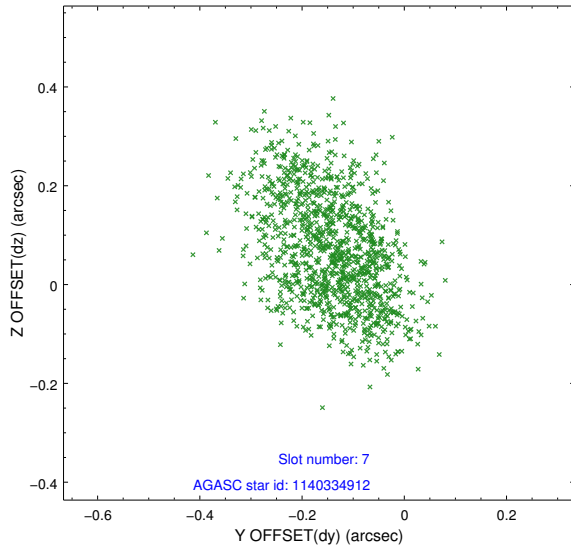
2.4.3 Slot 5



2.4.4 Slot 6

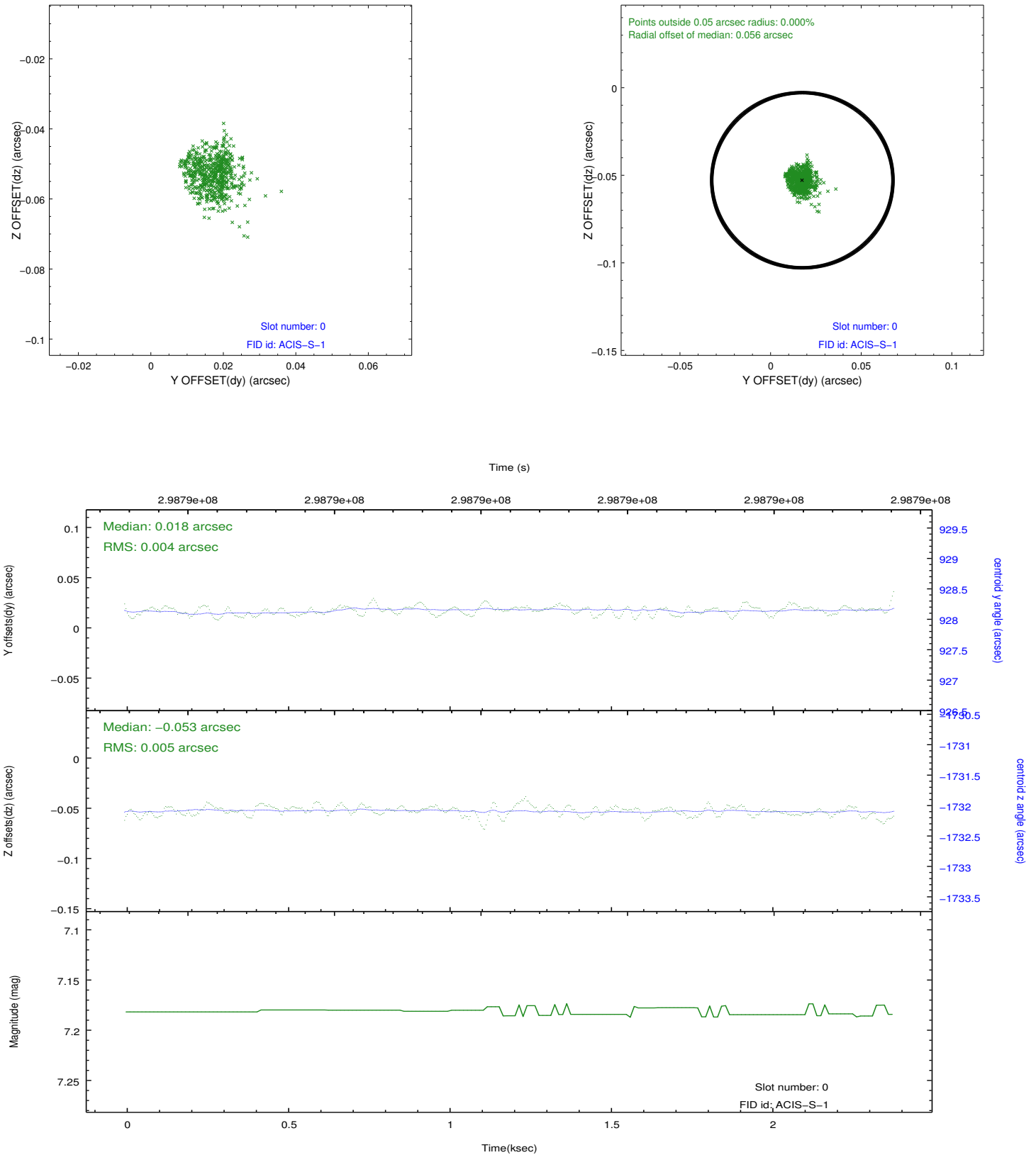


2.4.5 Slot 7

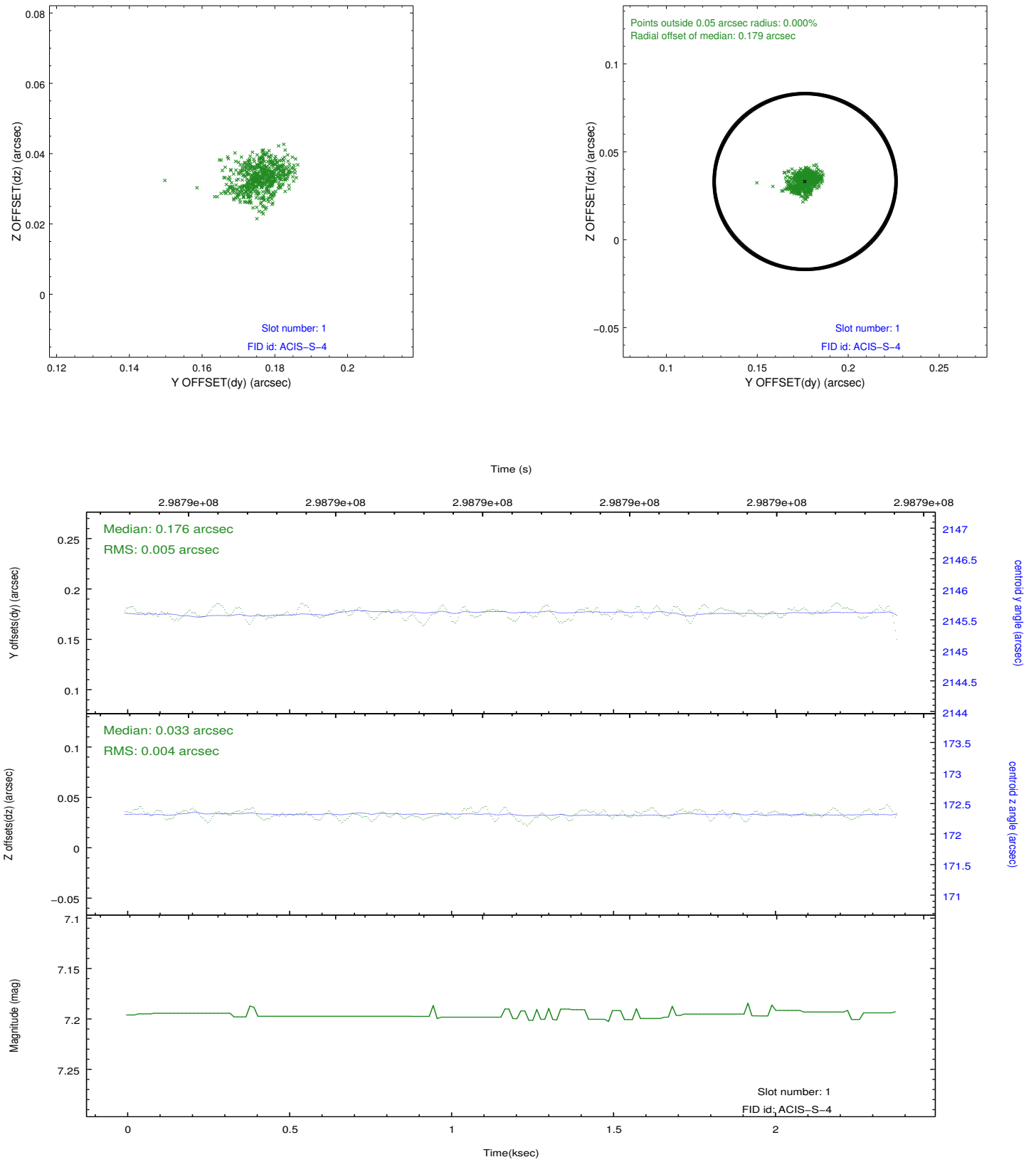


2.5 FID Slots

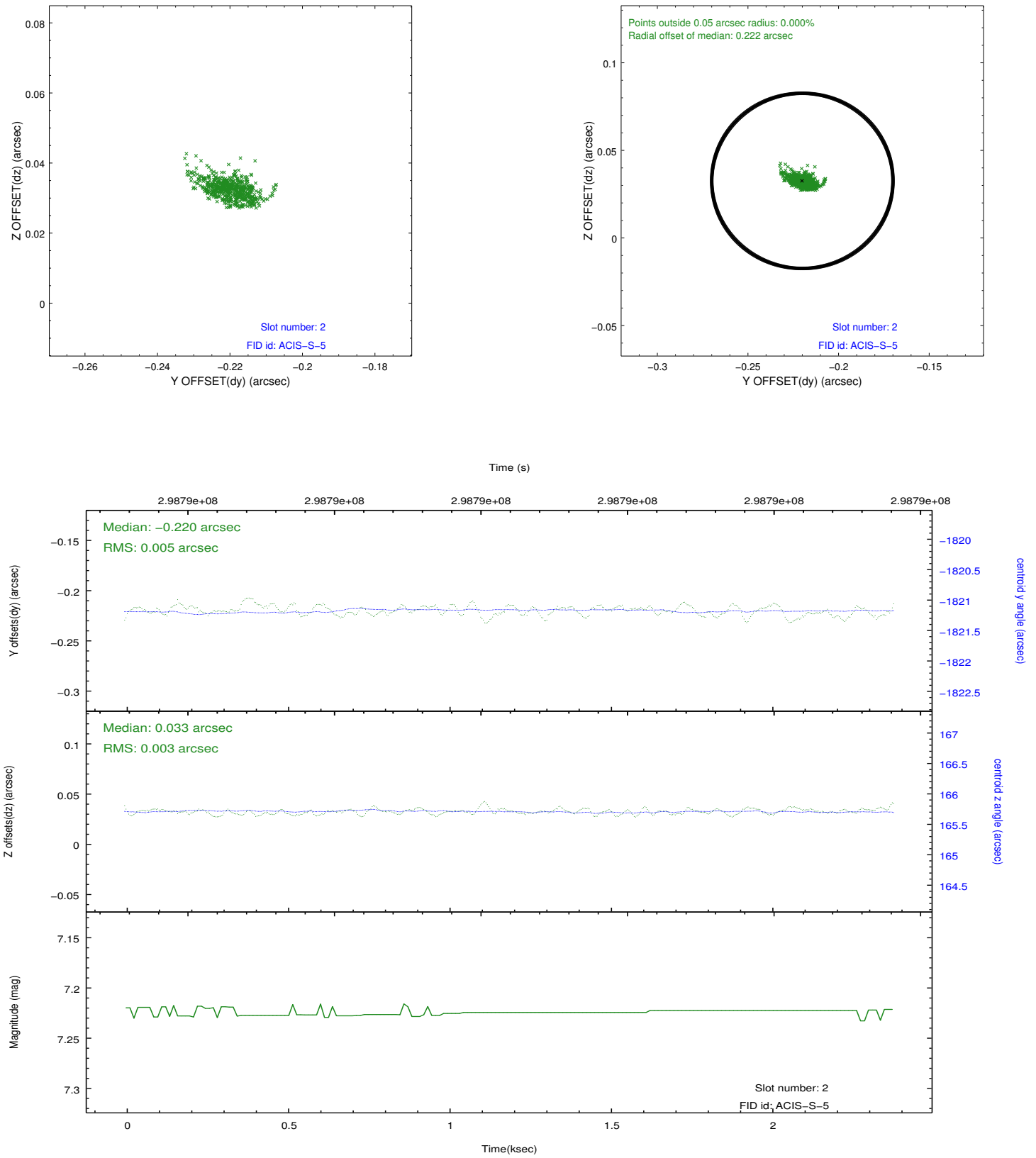
2.5.1 Slot 0



2.5.2 Slot 1



2.5.3 Slot 2



A Summary

A.1 Status

V&V Scientist	Jen Lauer
V&V Date (YYYY-MM-DD)	2012.04.27
V&V Edition	1
V&V Disposition and Status	OK
V&V Charge Time	1.95839999

A.2 Comments