

V&V Reference Report

L2 ASCDS Version : 8.4.4

Observation 8151 - L2 Version 2
Chandra X-Ray Center

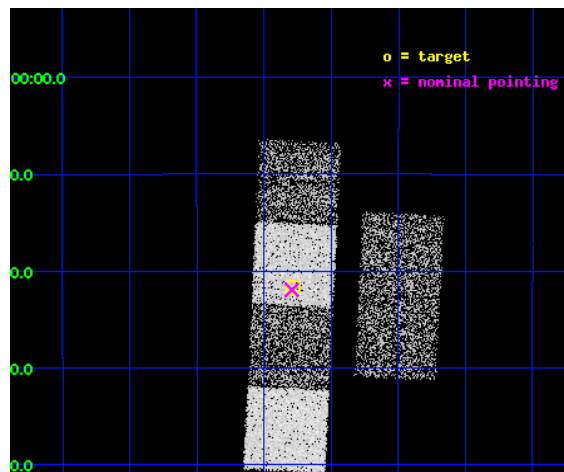
L2 Processing Date : May 3 2012

Contents

1	Front	2
2	OBI	3
2.1	OBI	3
2.1.1	Images	3
2.1.2	Bias	3
2.1.3	Parameters	4
2.1.4	Events	4
2.2	Compared Parameters	5
2.3	Aspect	6
2.4	Star Slots	9
2.4.1	Slot 3	9
2.4.2	Slot 4	10
2.4.3	Slot 5	11
2.4.4	Slot 6	12
2.4.5	Slot 7	13
2.5	FID Slots	14
2.5.1	Slot 0	14
2.5.2	Slot 1	15
2.5.3	Slot 2	16
A	Summary	17
A.1	Status	17
A.2	Comments	17

1 Front

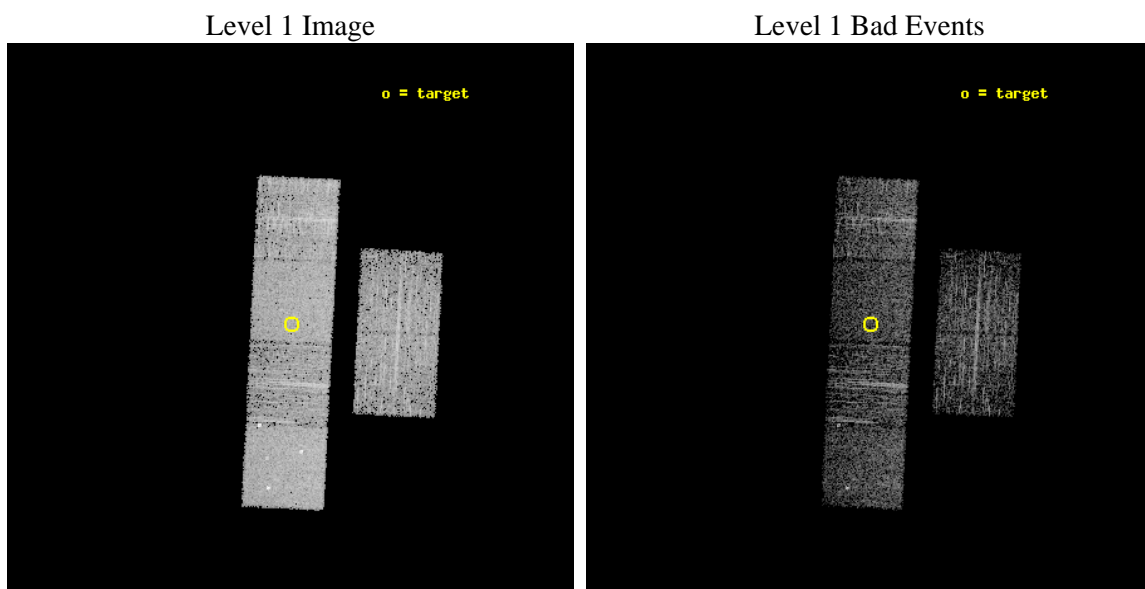
seq_num	900692	Sequence number
obs_id	8151	Observation id
title	ChICAGO GTO: Chandra Identification of Compact ASCA Galactic Objects	
observer	Dr. Stephen Murray	Principal investigator
object	AX J180816-2021	Source name
dtcycle	0	
cycle	P	events from which exps? Prim/Second/Both
ra_targ	272.07	Observer's specified target RA [deg]
dec_targ	-20.362	Observer's specified target Dec [deg]
ra_nom	272.07294812521	Nominal RA [deg]
dec_nom	-20.365936996269	Nominal Dec [deg]
roll_nom	272.82883889704	Nominal Roll [deg]
revision	2	Processing version of data
ontime	2134.3999921083	Sum of GTIs [s]
livetime	2107.3729342269	Livetime [s]
ontime2	2134.3999921083	Sum of GTIs [s]
ontime3	2134.3999921083	Sum of GTIs [s]
ontime5	2134.3999921083	Sum of GTIs [s]
ontime6	2134.3999921083	Sum of GTIs [s]
ontime7	2134.3999921083	Sum of GTIs [s]
ontime8	2131.1590217352	Sum of GTIs [s]
l2events	34458	Number of level 2 events



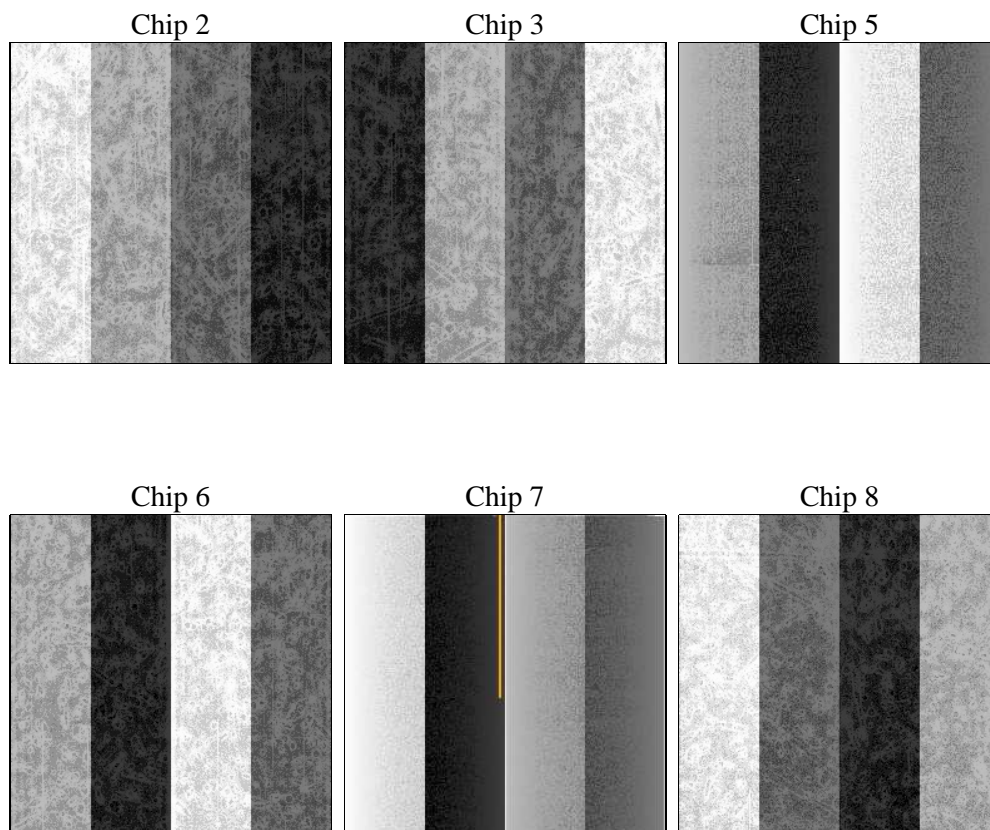
2 OBI

2.1 OBI

2.1.1 Images



2.1.2 Bias



2.1.3 Parameters

obi_num	0	Obi number	sched_exp_time	2380.000000	[s] Scheduled observation exposure time
ascdsver	8.4.4	Processing system revision	ontime	2134.3999921083	Sum of GTIs [s]
caldsver	4.4.9	 	ontime2	2134.3999921083	Sum of GTIs [s]
date	2012-05-03T12:28:07	Date and time of file creation	ontime3	2134.3999921083	Sum of GTIs [s]
revision	2	Processing version of data	ontime5	2134.3999921083	Sum of GTIs [s]
			ontime6	2134.3999921083	Sum of GTIs [s]
			ontime7	2134.3999921083	Sum of GTIs [s]
			ontime8	2131.1590217352	Sum of GTIs [s]
			l1events	151709	Number of level 1 events

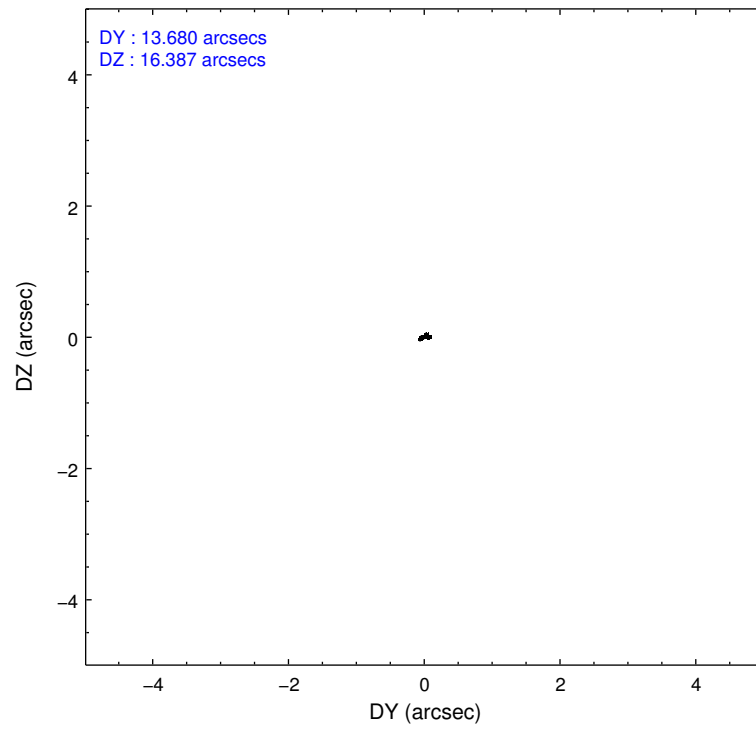
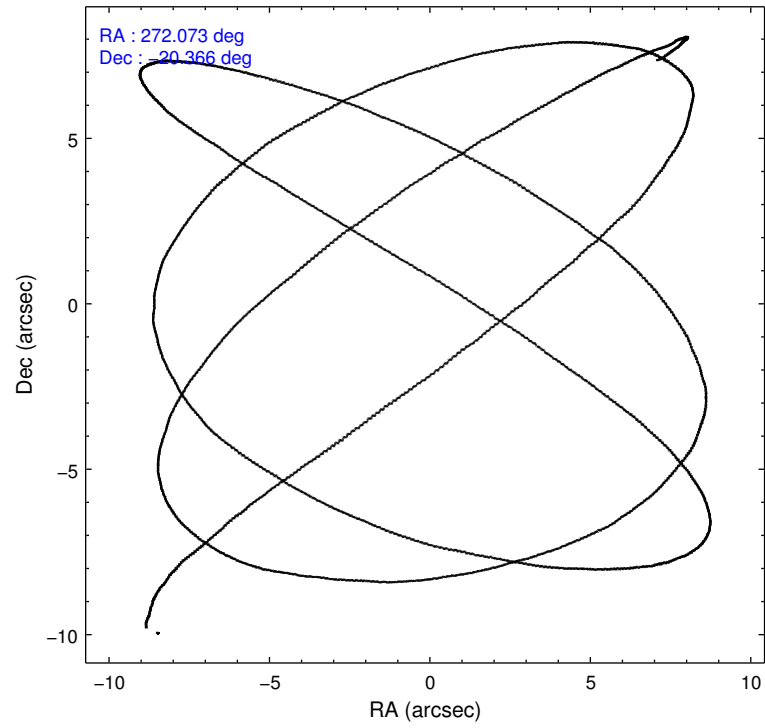
2.1.4 Events

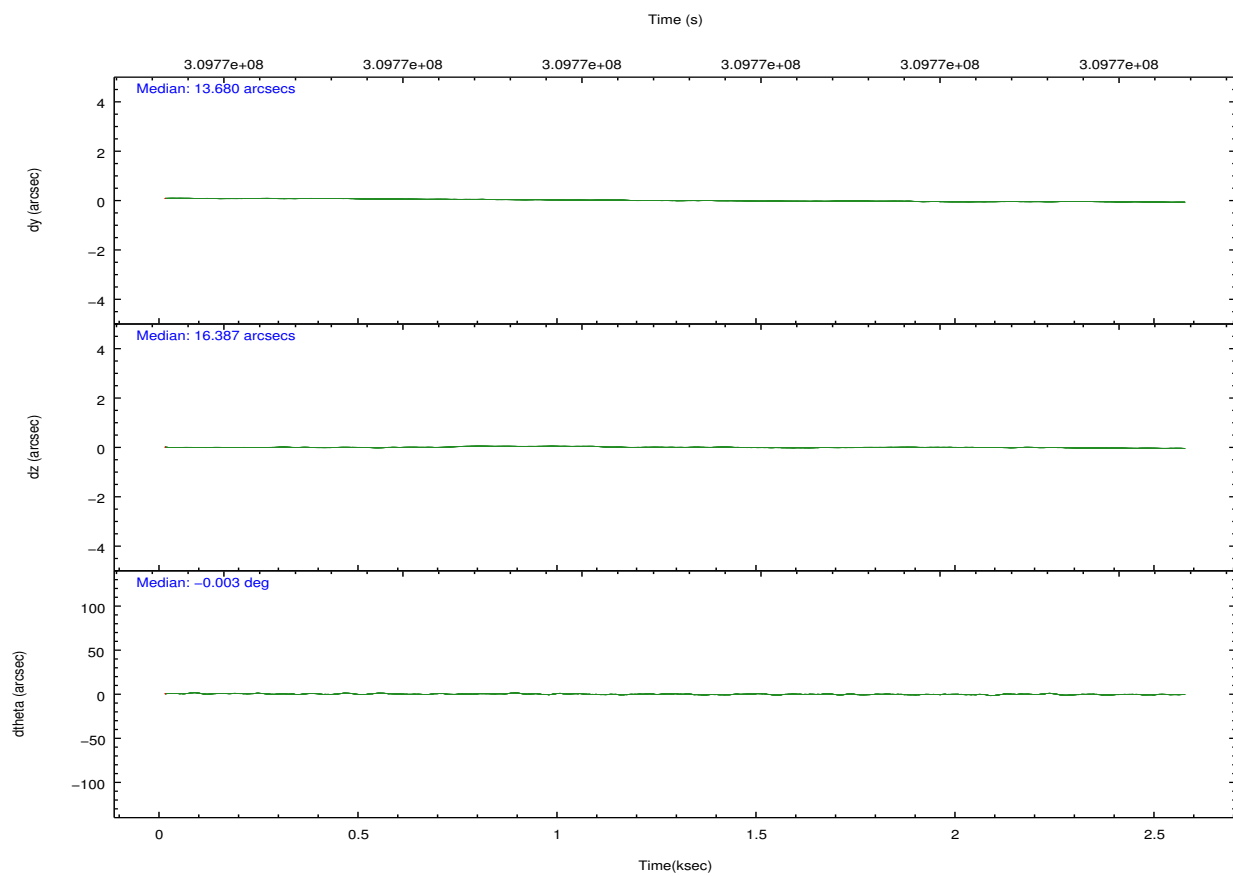
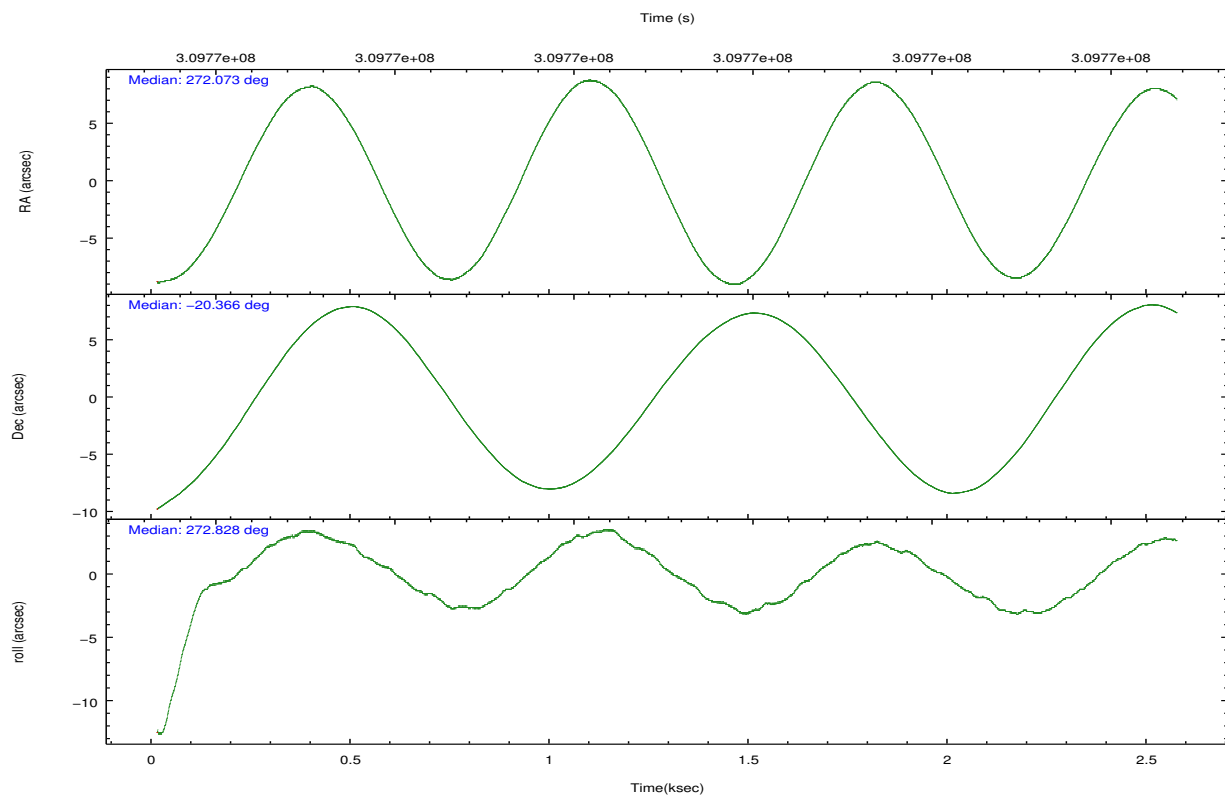
	ccd 2	ccd 3	ccd 5	ccd 6	ccd 7	ccd 8		ccd 2	ccd 3	ccd 5	ccd 6	ccd 7	ccd 8
level 1 events	20538	20197	32554	21322	28173	28925	grade 0 events	1235	1158	1675	1072	998	1899
rejected events	17908	17635	17413	18652	16485	22868		6%	5%	5%	5%	3%	6%
rejected %	87%	87%	53%	87%	58%	79%	grade 1 events	24	15	229	12	27	28
								0%	0%	0%	0%	0%	0%
							grade 2 events	494	486	4494	585	2434	1357
								2%	2%	13%	2%	8%	4%
							grade 3 events	252	248	574	257	1005	635
								1%	1%	1%	1%	3%	2%
							grade 4 events	230	252	590	261	992	592
								1%	1%	1%	1%	3%	2%
							grade 5 events	760	870	2362	930	2582	1267
								3%	4%	7%	4%	9%	4%
							grade 6 events	428	423	7848	505	6294	1580
								2%	2%	24%	2%	22%	5%
							grade 7 events	17115	16745	14782	17700	13841	21567
								83%	82%	45%	83%	49%	74%

2.2 Compared Parameters

Parameter	Planned	Actual	Parameter	Planned	Actual
Instrument	ACIS	ACIS	Obspar format version number	7	7
Detector	ACIS-235678	ACIS-235678	Obspar file type	PREDICTED	ACTUAL
Grating	NONE	NONE	Obspar update status	NONE	UPDATED
Data mode	FAINT	FAINT	CCD I0 on	N	N
Observation mode	POINTING	POINTING	CCD I1 on	N	N
[deg] Pointing RA	272.056782	272.0729481252059	CCD I2 on	O2	Y
[deg] Pointing Dec	-20.343226	-20.36593699626911	CCD I3 on	O3	Y
[deg] Pointing Roll	272.666611	272.8288388970376	CCD S0 on	N	N
[mm] SIM focus pos	-0.684267	-0.6828225247311905	CCD S1 on	O1	Y
[mm] SIM defocus	0	0.001444936568705701	CCD S2 on	O5	Y
[mm] SIM translation stage pos	-190.132523	-190.1425803651734	CCD S3 on	Y	Y
[mm] SIM translation stage offset	0	0.01005778216563158	CCD S4 on	O4	Y
[s] Observation start time (MET)	309770661.184000	309770136.06195	CCD S5 on	N	N
Observation start date	2007-10-26T07:23:16	2007-10-26T07:15:36	Number of optional ACIS chips dropped	0	0
[s] Observation end time (MET)	309773041.184000	309773198.7621	On-chip summing requested	N	N
Observation end date	2007-10-26T08:02:56	2007-10-26T08:06:38	Subarray requested	NONE	NONE
Read mode	TIMED	TIMED	Alternating exposures requested	N	N
			[s] Primary exposure time	0.000000	3.2

2.3 Aspect



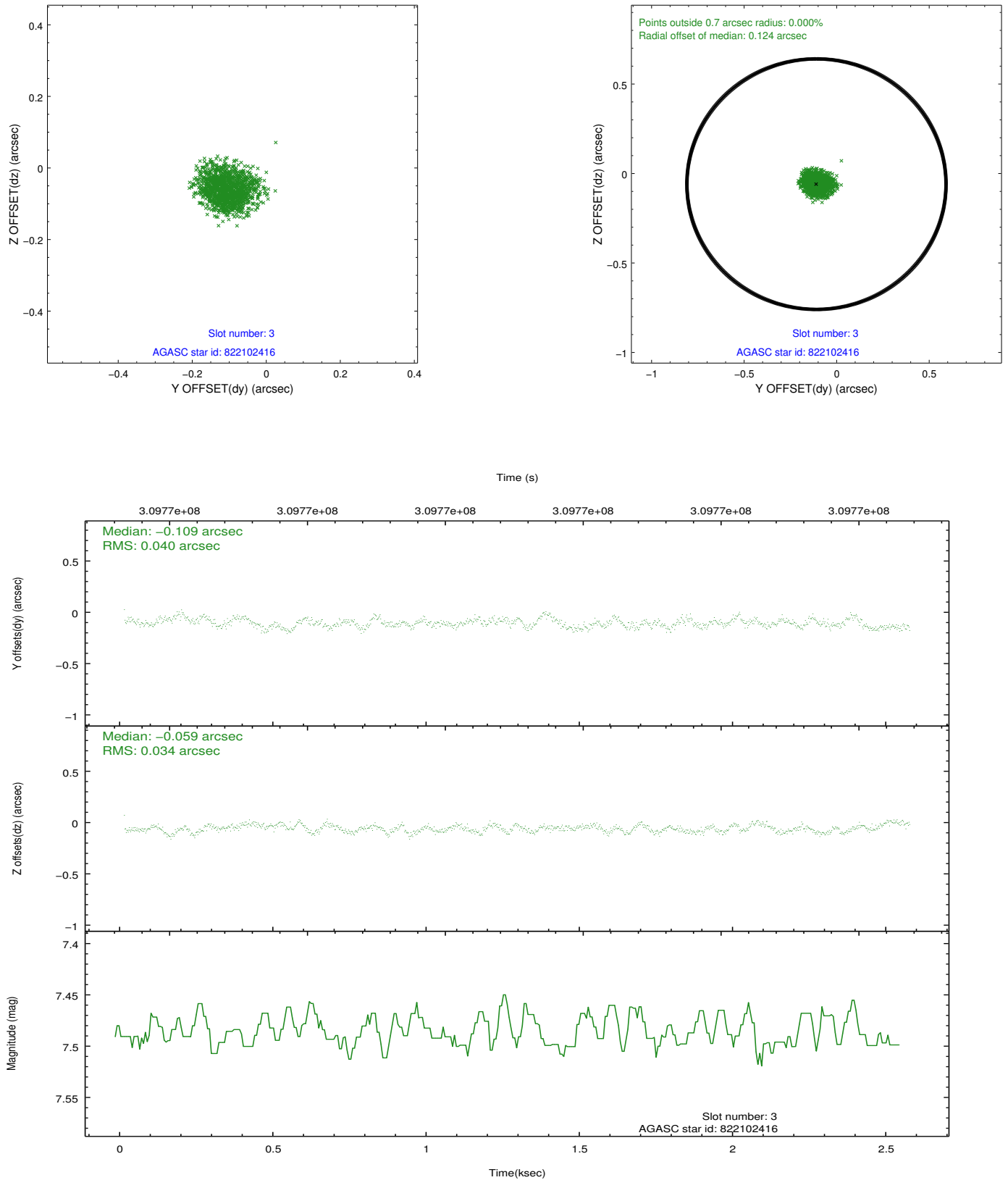


Slot Statistics

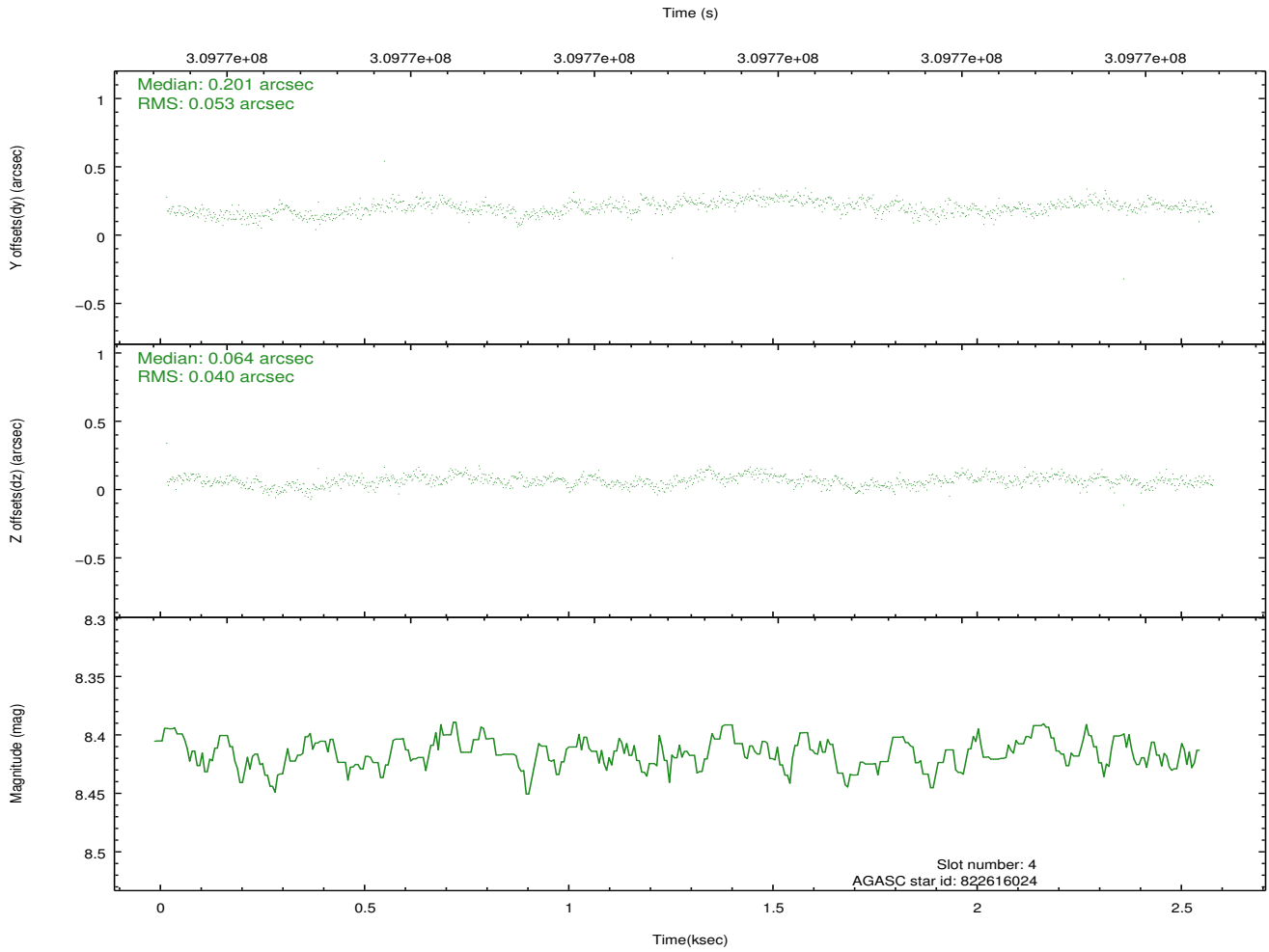
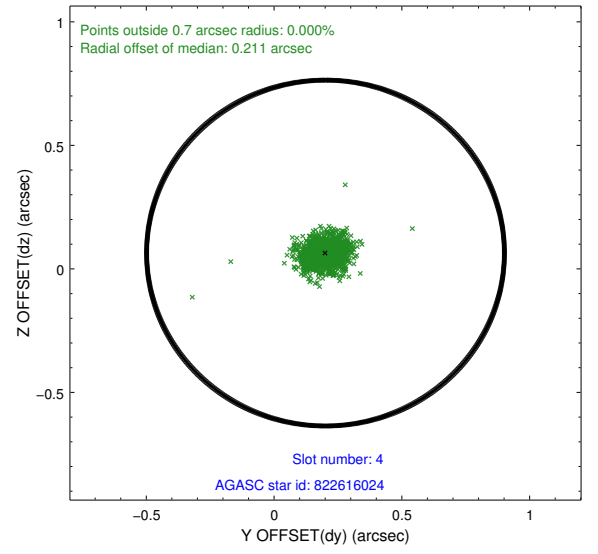
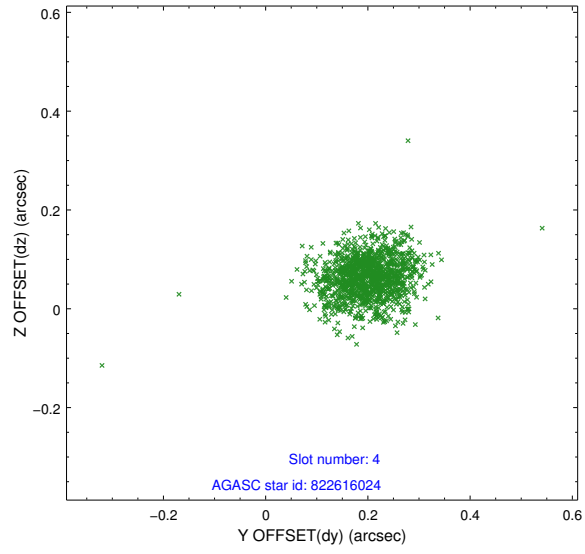
slot	status	id	mag	n_pts	med_dy	med_dz	dr1	dr2	ra	dec	mean_y	mean_z
0	FID	ACIS-S-2	7.09	626	-0.094	-0.069	0.010	0.022	0.000000	0.000000	-766.75	-1737.81
1	FID	ACIS-S-4	7.18	626	0.114	0.038	0.009	0.014	0.000000	0.000000	2145.62	168.11
2	FID	ACIS-S-6	7.32	626	-0.048	0.038	0.009	0.014	0.000000	0.000000	398.55	808.41
3	GUIDE	822102416	7.49	1251	-0.109	-0.059	0.057	0.089	272.173216	-20.087156	-902.05	436.04
4	GUIDE	822616024	8.42	1251	0.201	0.064	0.068	0.110	272.218514	-20.919122	2096.71	447.54
5	GUIDE	822617304	8.96	1250	0.247	0.154	0.069	0.112	272.421826	-20.831304	1816.08	1145.67
6	GUIDE	820386176	7.35	1251	-0.268	-0.217	0.063	0.101	271.388808	-19.754205	-2217.34	-2161.76
7	GUIDE	822098736	8.47	1249	-0.071	0.057	0.073	0.118	272.269355	-19.875225	-1650.44	795.59

2.4 Star Slots

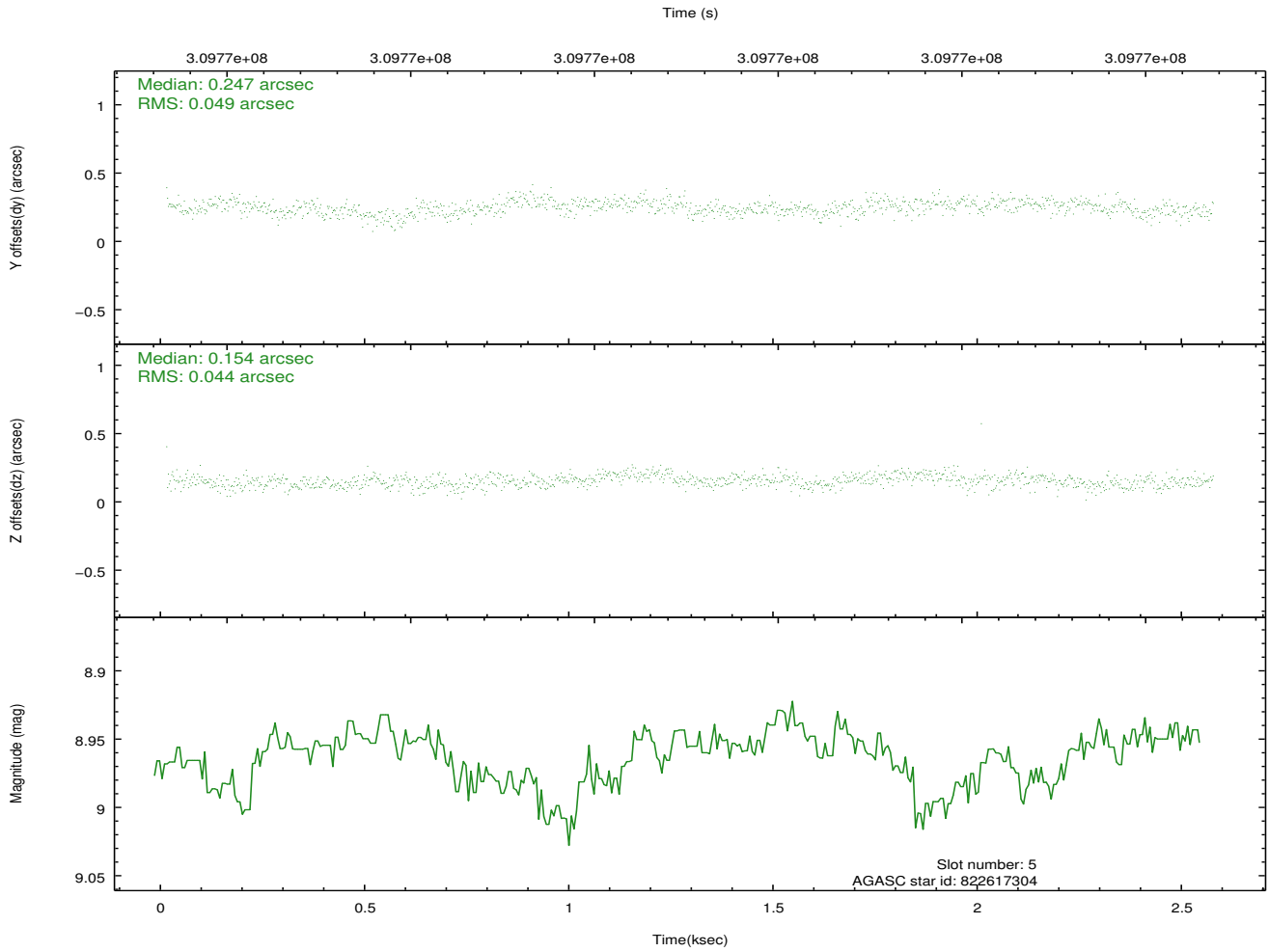
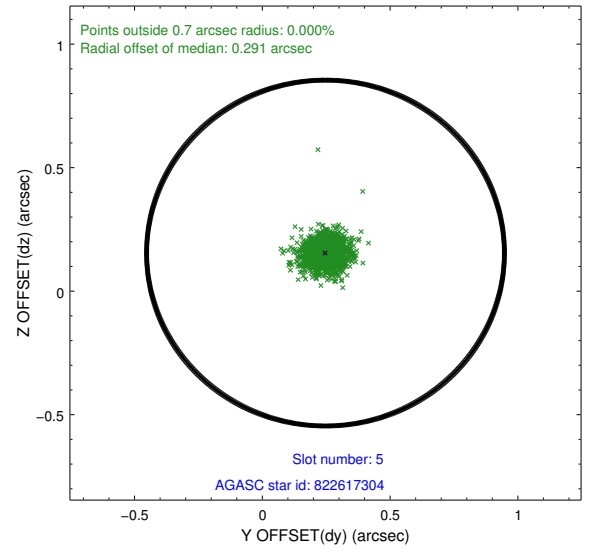
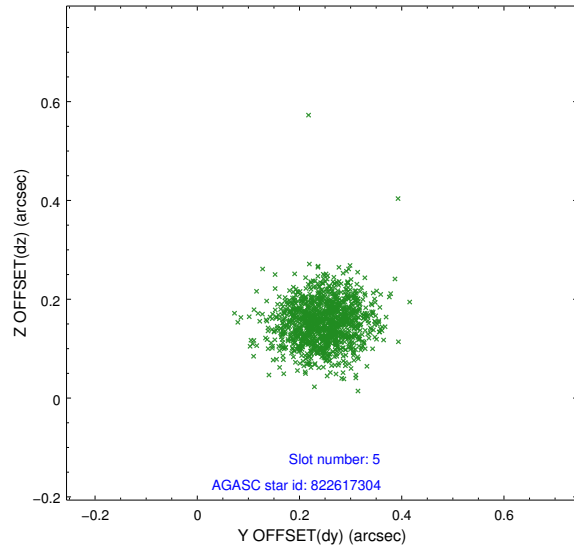
2.4.1 Slot 3



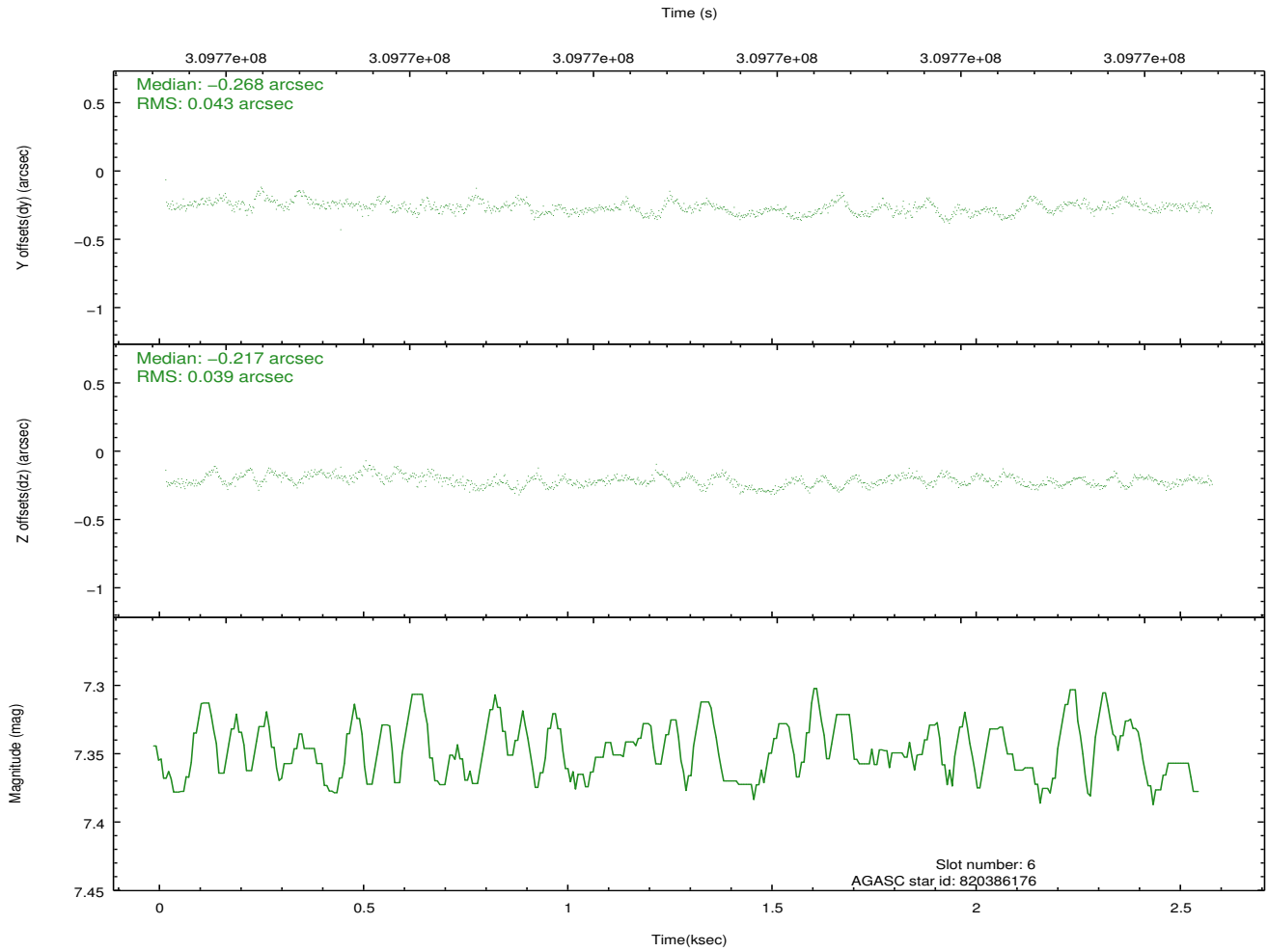
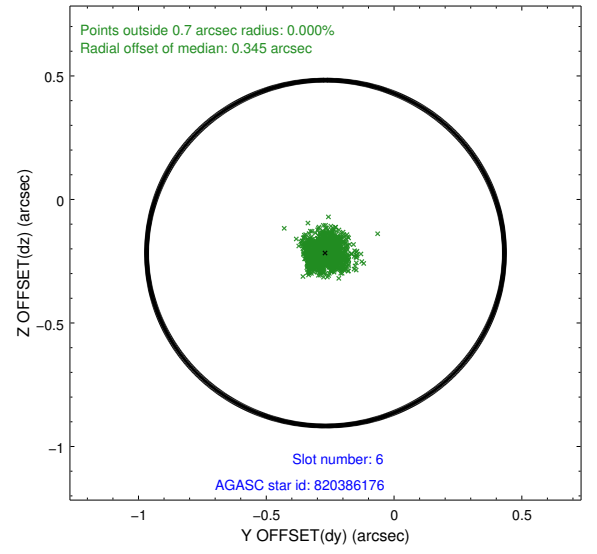
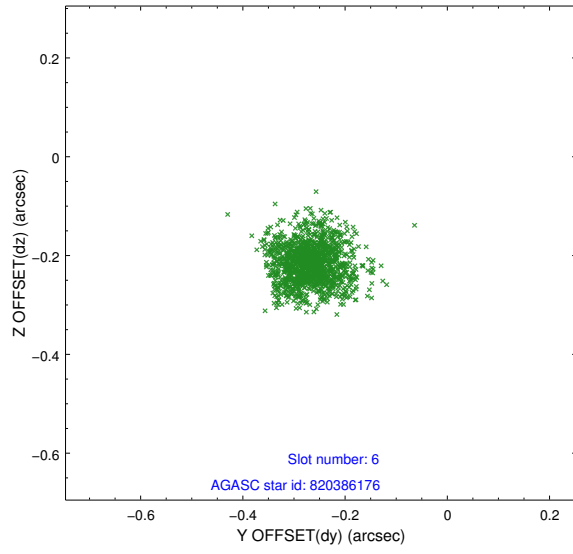
2.4.2 Slot 4



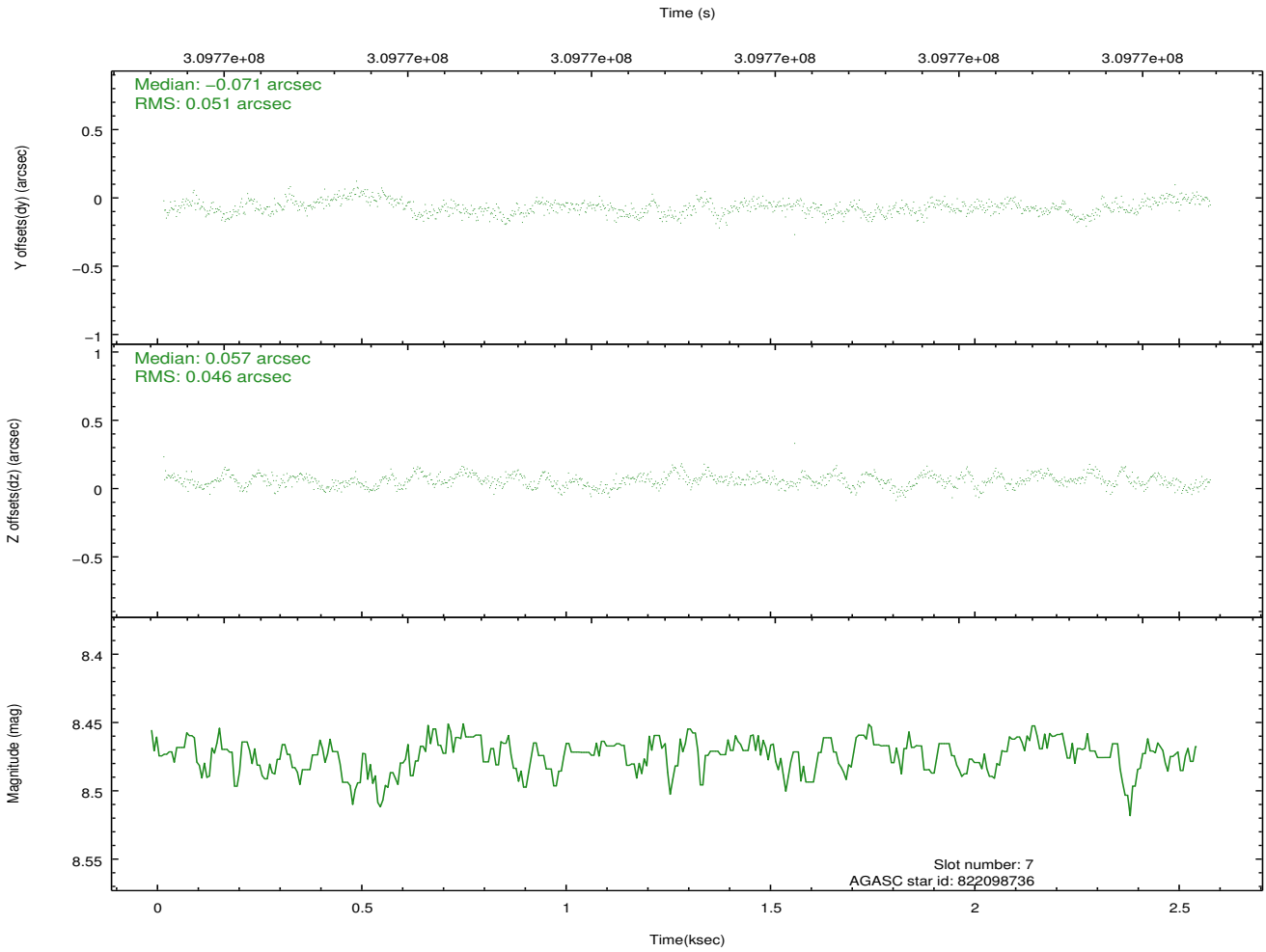
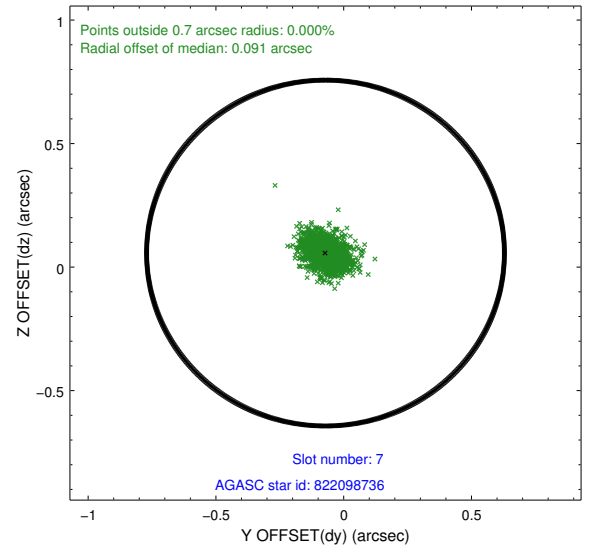
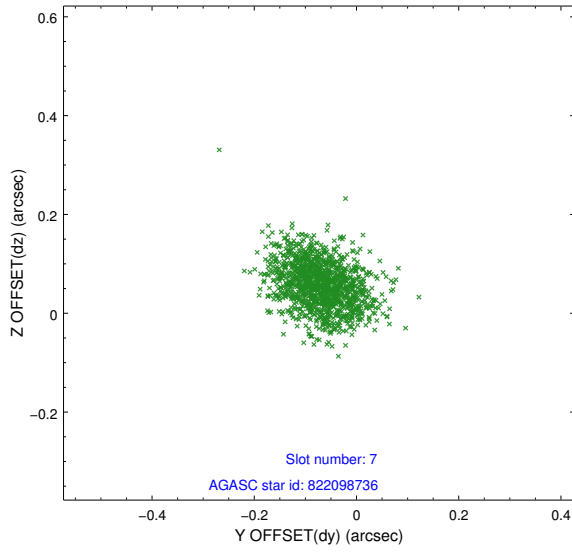
2.4.3 Slot 5



2.4.4 Slot 6

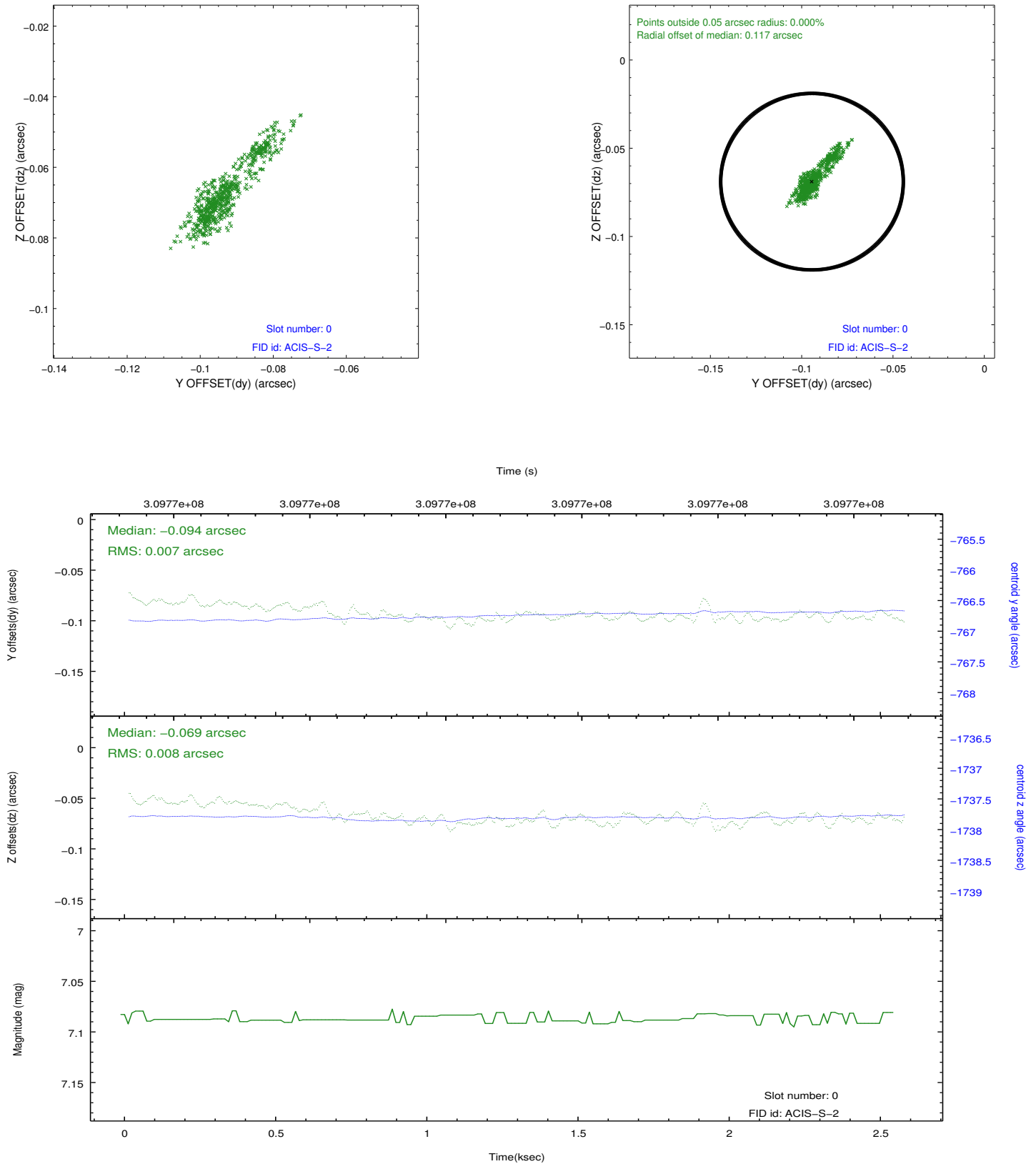


2.4.5 Slot 7

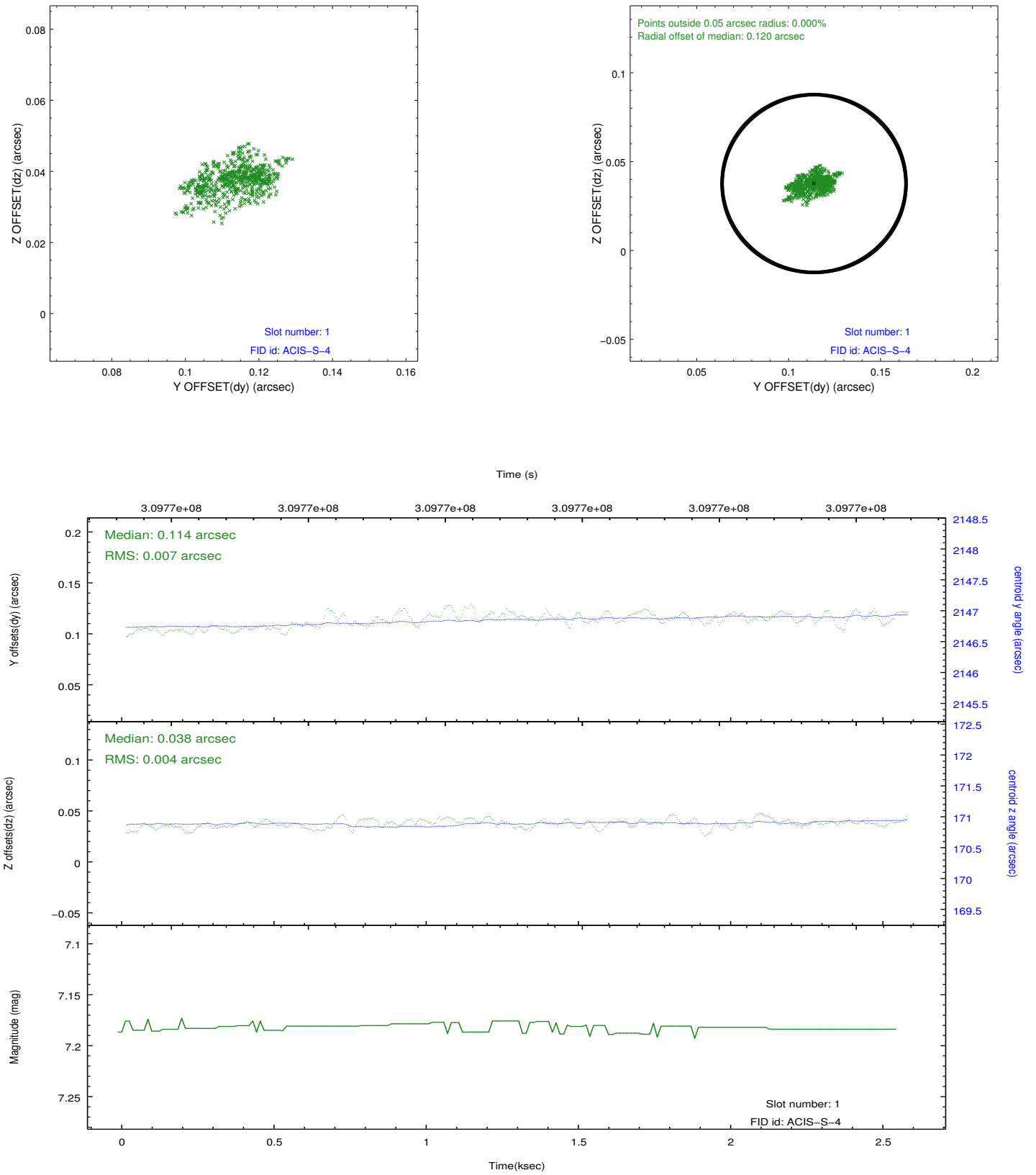


2.5 FID Slots

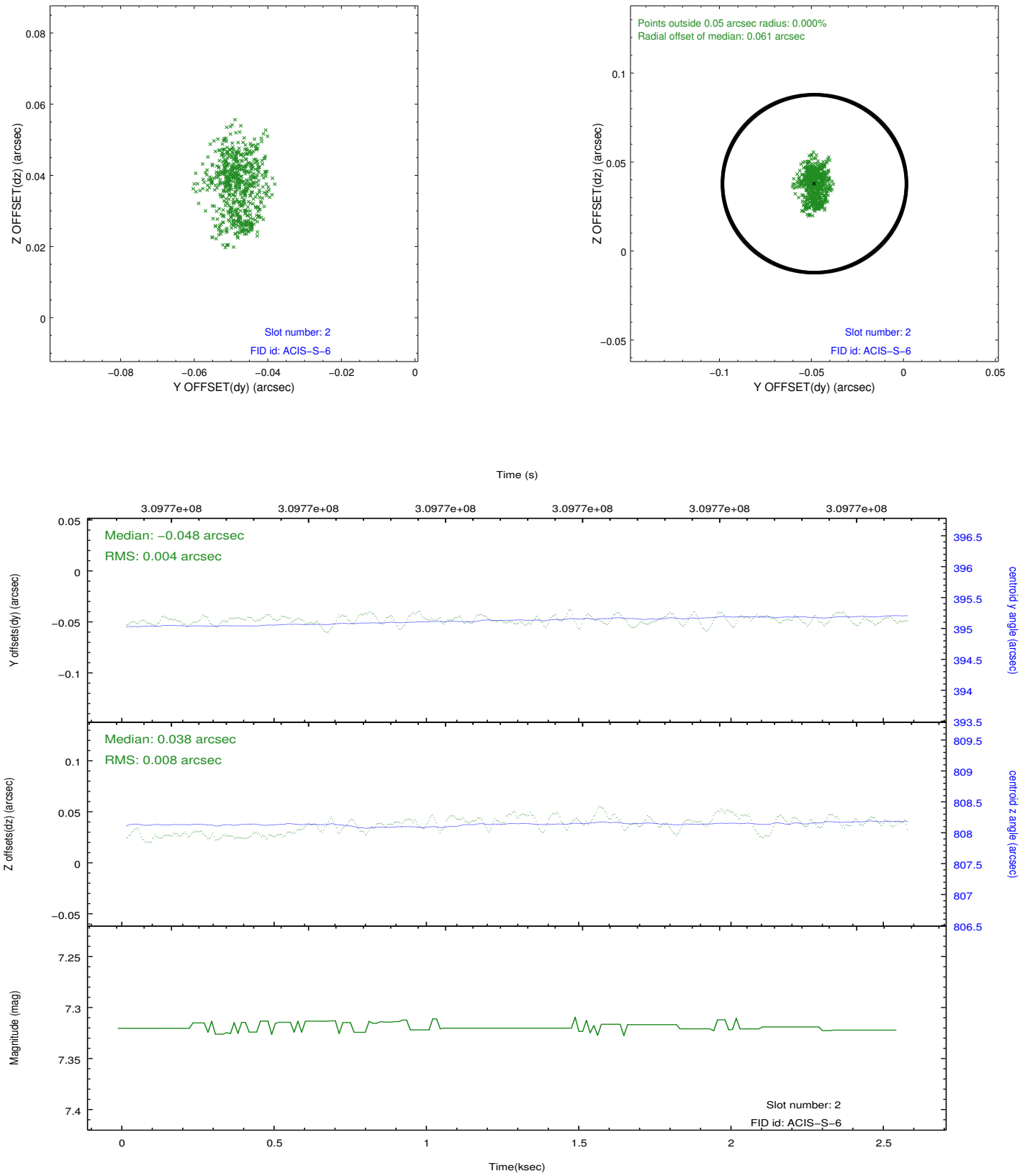
2.5.1 Slot 0



2.5.2 Slot 1



2.5.3 Slot 2



A Summary

A.1 Status

V&V Scientist	Jen Lauer
V&V Date (YYYY-MM-DD)	2012.05.04
V&V Edition	1
V&V Disposition and Status	OK
V&V Charge Time	2.13439999

A.2 Comments