

V&V Reference Report

L2 ASCDS Version : 8.4.4

Observation 8128 - L2 Version 2
Chandra X-Ray Center

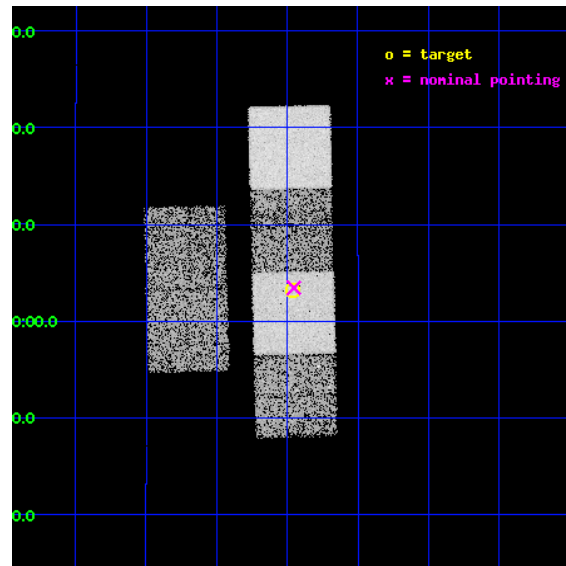
L2 Processing Date : May 10 2012

Contents

1	Front	2
2	OBI	3
2.1	OBI	3
2.1.1	Images	3
2.1.2	Bias	3
2.1.3	Parameters	4
2.1.4	Events	4
2.2	Compared Parameters	5
2.3	Aspect	6
2.4	Star Slots	9
2.4.1	Slot 3	9
2.4.2	Slot 4	10
2.4.3	Slot 5	11
2.4.4	Slot 6	12
2.4.5	Slot 7	13
2.5	FID Slots	14
2.5.1	Slot 0	14
2.5.2	Slot 1	15
2.5.3	Slot 2	16
A	Summary	17
A.1	Status	17
A.2	Comments	17

1 Front

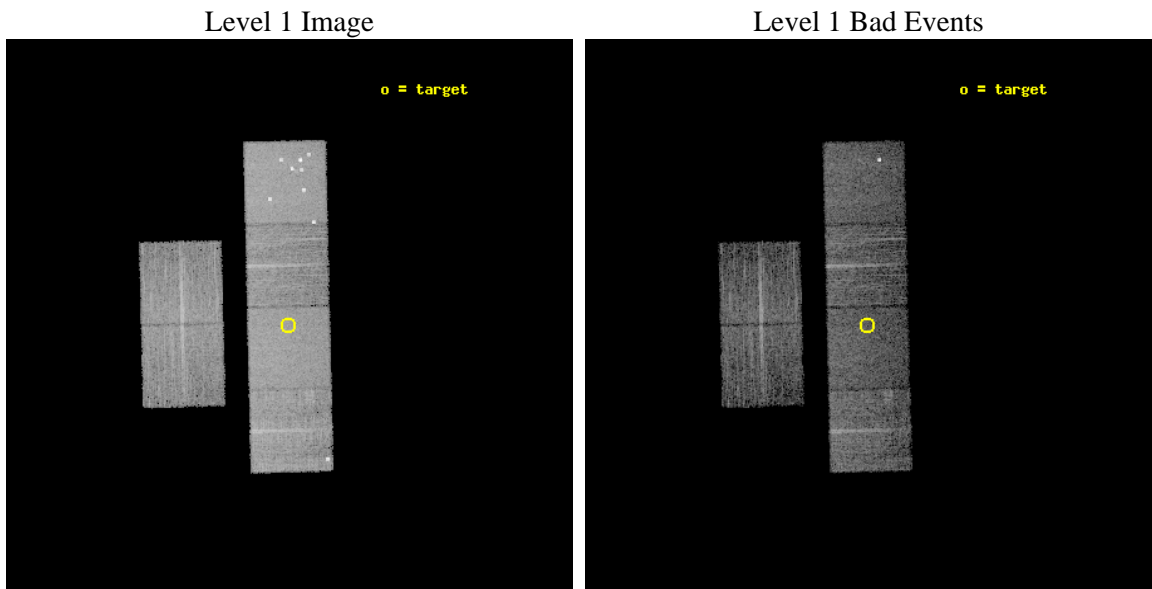
seq_num	900669	Sequence number
obs_id	8128	Observation id
title	The Duty Cycle of Supermassive Black Holes: X-raying Virgo	Proposa
observer	Prof Tommaso Treu	Principal investigator
object	856	Source name
dtcycle	0	
cycle	P	events from which exps? Prim/Second/Both
ra_targ	186.490833	Observer's specified target RA [deg]
dec_targ	10.053556	Observer's specified target Dec [deg]
ra_nom	186.48833636148	Nominal RA [deg]
dec_nom	10.057688577895	Nominal Dec [deg]
roll_nom	88.65882244682	Nominal Roll [deg]
revision	2	Processing version of data
ontime	5158.3999808431	Sum of GTIs [s]
livetime	5093.0812142701	Livetime [s]
ontime2	5158.3999808431	Sum of GTIs [s]
ontime3	5158.3999808431	Sum of GTIs [s]
ontime5	5158.3999808431	Sum of GTIs [s]
ontime6	5158.3999808431	Sum of GTIs [s]
ontime7	5158.3999808431	Sum of GTIs [s]
ontime8	5155.1589505076	Sum of GTIs [s]
l2events	82684	Number of level 2 events



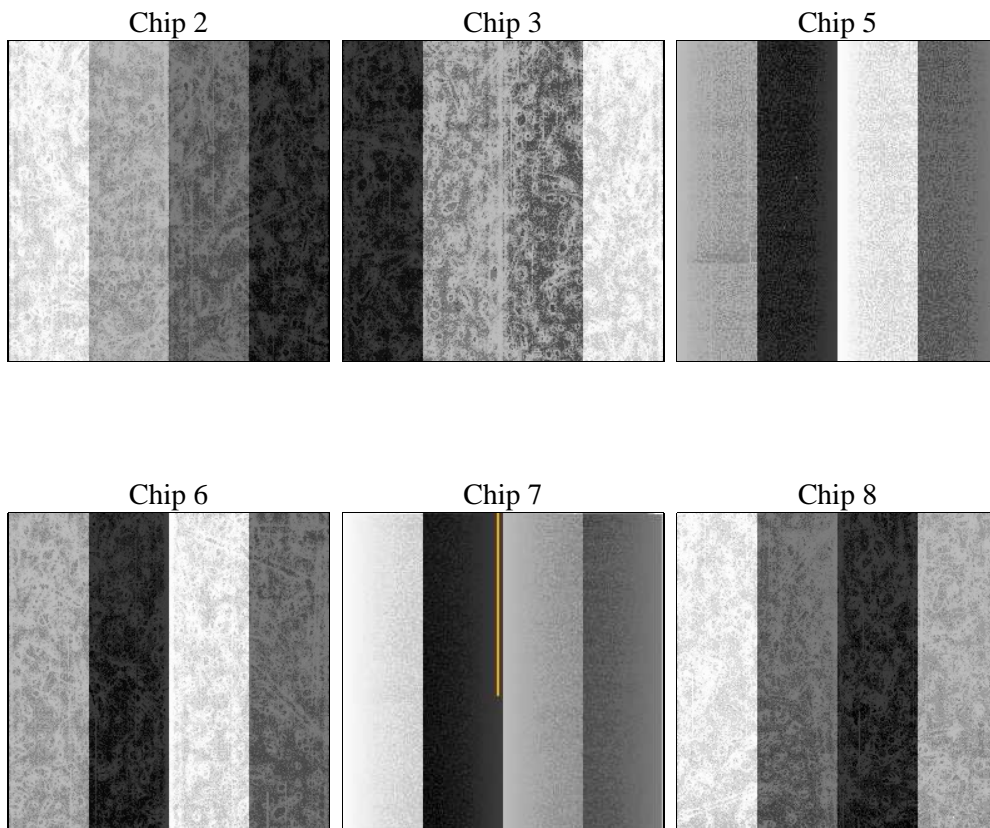
2 OBI

2.1 OBI

2.1.1 Images



2.1.2 Bias



2.1.3 Parameters

obi_num	1	Obi number	sched_exp_time	5400.000000	[s] Scheduled observation exposure time
ascdsver	8.4.4	Processing system revision	ontime	5158.3999808431	Sum of GTIs [s]
caldsver	4.4.9	 	ontime2	5158.3999808431	Sum of GTIs [s]
date	2012-05-10T08:36:25	Date and time of file creation	ontime3	5158.3999808431	Sum of GTIs [s]
revision	2	Processing version of data	ontime5	5158.3999808431	Sum of GTIs [s]
			ontime6	5158.3999808431	Sum of GTIs [s]
			ontime7	5158.3999808431	Sum of GTIs [s]
			ontime8	5155.1589505076	Sum of GTIs [s]
			l1events	379502	Number of level 1 events

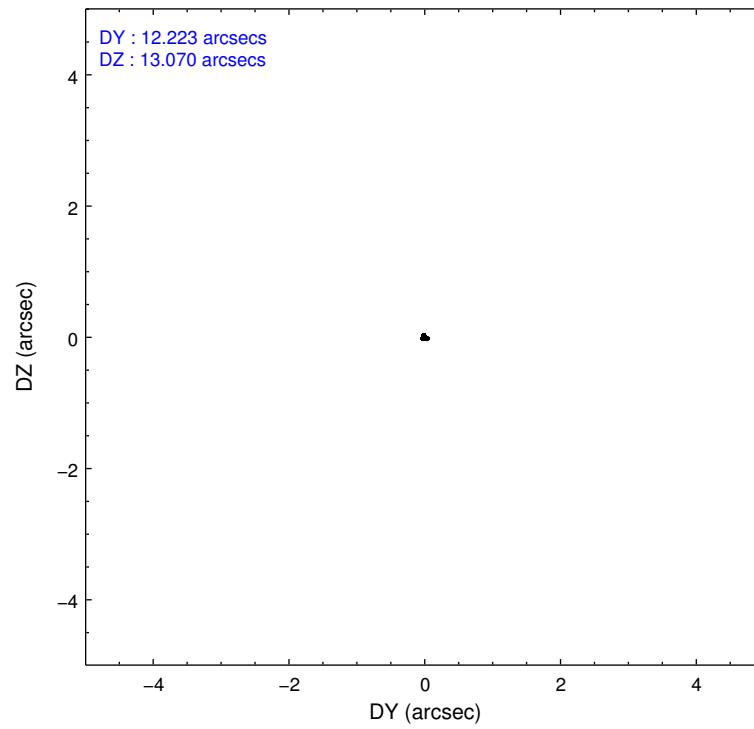
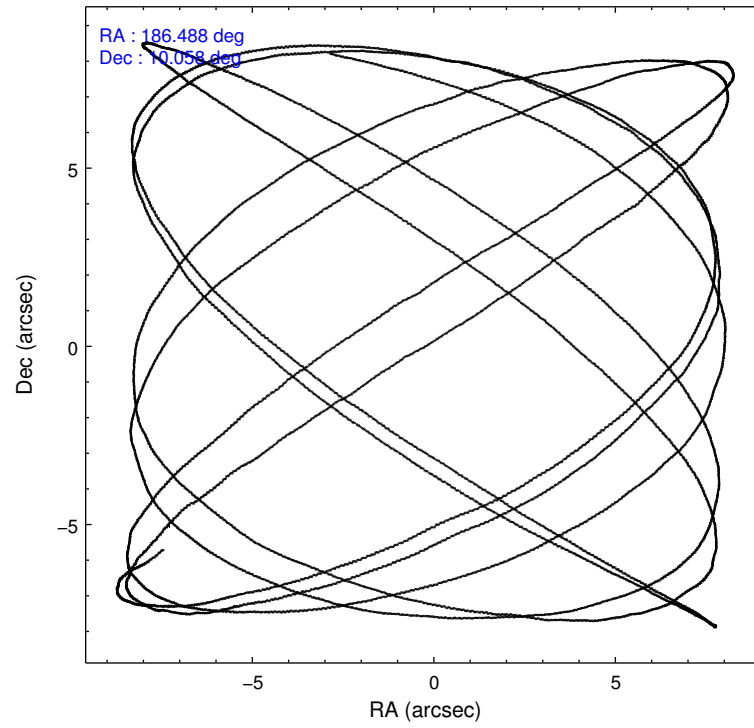
2.1.4 Events

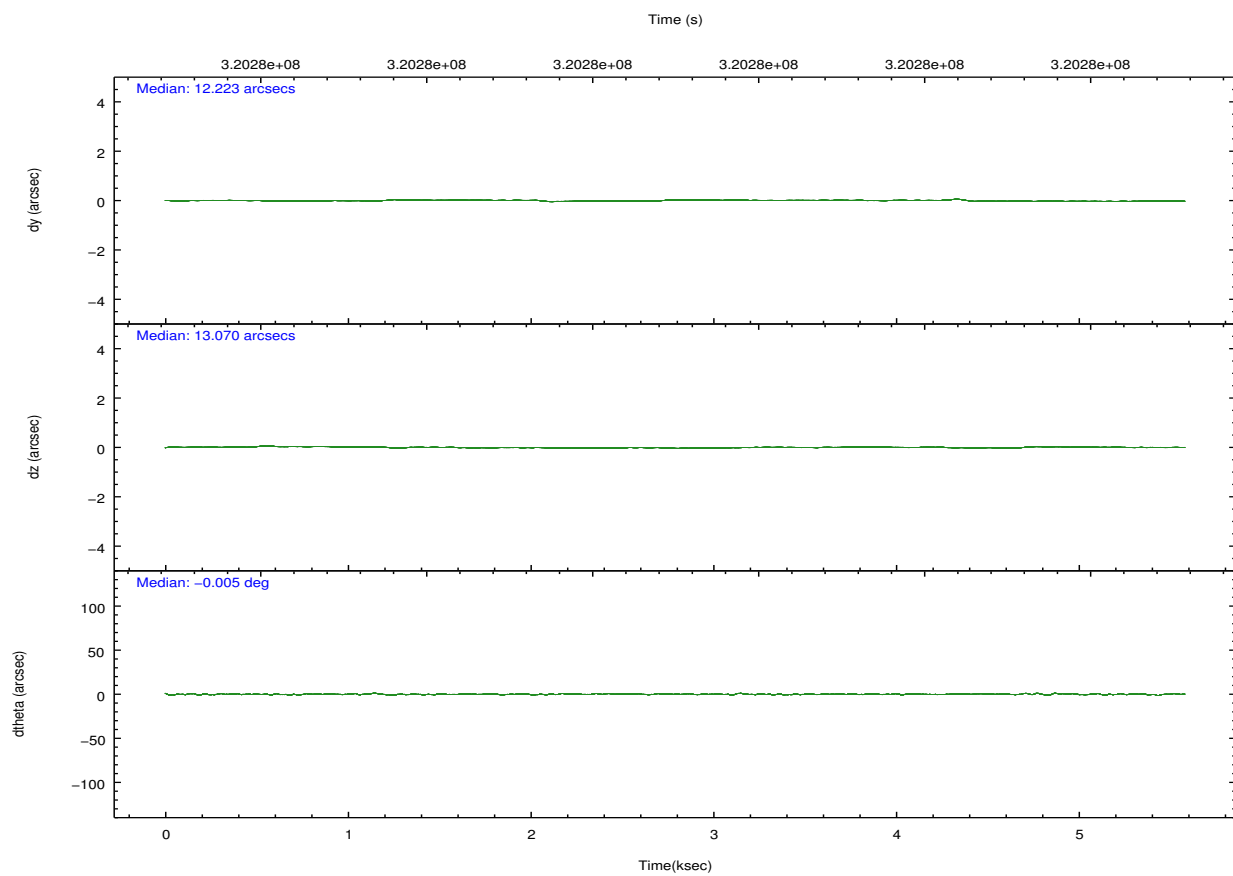
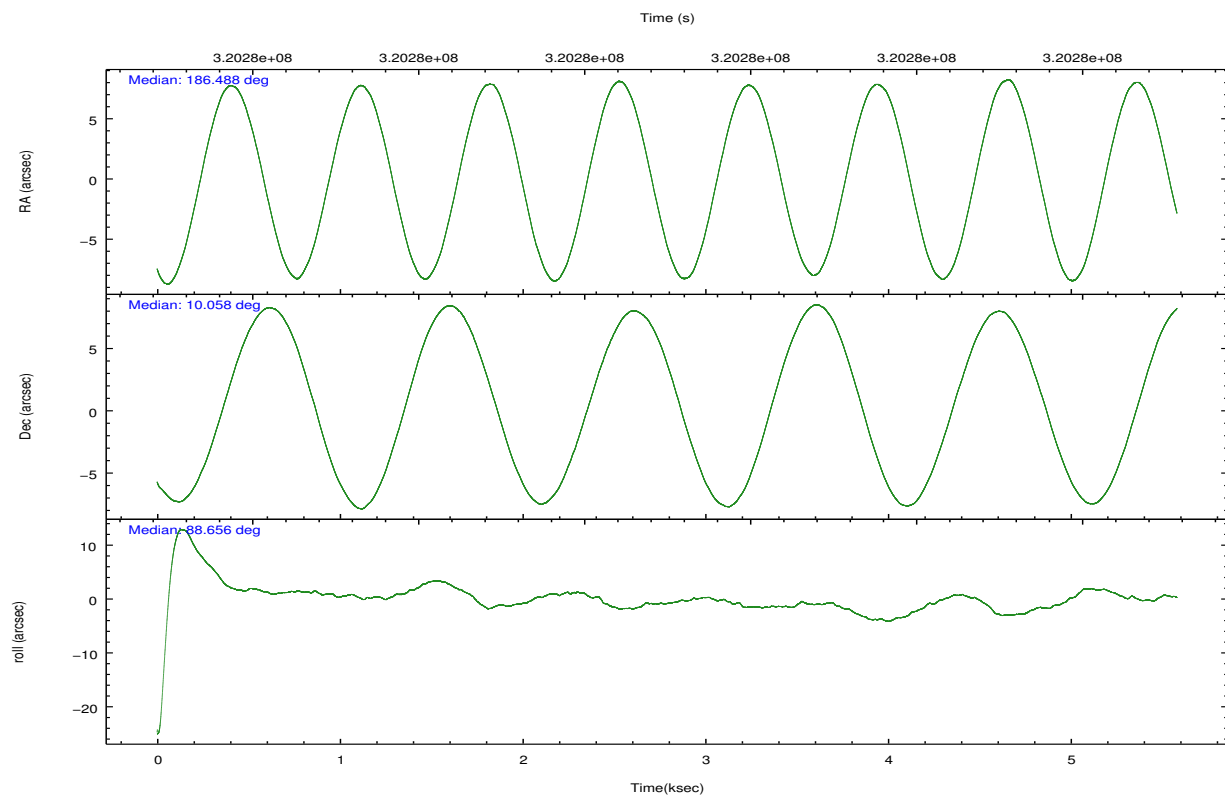
	ccd 2	ccd 3	ccd 5	ccd 6	ccd 7	ccd 8		ccd 2	ccd 3	ccd 5	ccd 6	ccd 7	ccd 8
level 1 events	53080	48528	88077	51216	68887	69714	grade 0 events	2536	2687	8422	2266	2387	5953
rejected events	47202	42467	44188	45153	40771	53559		4%	5%	9%	4%	3%	8%
rejected %	88%	87%	50%	88%	59%	76%	grade 1 events	31	31	117	26	84	69
								0%	0%	0%	0%	0%	0%
							grade 2 events	1246	1145	11968	1345	5687	3373
								2%	2%	13%	2%	8%	4%
							grade 3 events	571	576	1455	603	2340	1442
								1%	1%	1%	1%	3%	2%
							grade 4 events	538	557	1197	571	2322	1376
								1%	1%	1%	1%	3%	1%
							grade 5 events	2041	2296	5146	2298	6297	3096
								3%	4%	5%	4%	9%	4%
							grade 6 events	992	1101	20882	1283	15394	4017
								1%	2%	23%	2%	22%	5%
							grade 7 events	45125	40135	38890	42824	34376	50388
								85%	82%	44%	83%	49%	72%

2.2 Compared Parameters

Parameter	Planned	Actual	Parameter	Planned	Actual
Instrument	ACIS	ACIS	Obspar format version number	7	7
Detector	ACIS-235678	ACIS-235678	Obspar file type	PREDICTED	ACTUAL
Grating	NONE	NONE	Obspar update status	NONE	UPDATED
Data mode	FAINT	FAINT	CCD I0 on	N	N
Observation mode	POINTING	POINTING	CCD I1 on	N	N
[deg] Pointing RA	186.501991	186.4883363614809	CCD I2 on	O1	Y
[deg] Pointing Dec	10.033933	10.05768857789458	CCD I3 on	O2	Y
[deg] Pointing Roll	88.499814	88.65882244681964	CCD S0 on	N	N
[mm] SIM focus pos	-0.684267	-0.6828225247311905	CCD S1 on	O3	Y
[mm] SIM defocus	0	0.001444936568705701	CCD S2 on	Y	Y
[mm] SIM translation stage pos	-190.132523	-190.1400660498719	CCD S3 on	Y	Y
[mm] SIM translation stage offset	0	0.00754346686406393	CCD S4 on	O4	Y
[s] Observation start time (MET)	320275891.184000	320275508.65788	CCD S5 on	N	N
Observation start date	2008-02-24T21:30:26	2008-02-24T21:25:08	Number of optional ACIS chips dropped	0	0
[s] Observation end time (MET)	320281291.184000	320281518.23317	On-chip summing requested	N	N
Observation end date	2008-02-24T23:00:26	2008-02-24T23:05:18	Subarray requested	NONE	NONE
Read mode	TIMED	TIMED	Alternating exposures requested	N	N
			[s] Primary exposure time	0.000000	3.2

2.3 Aspect



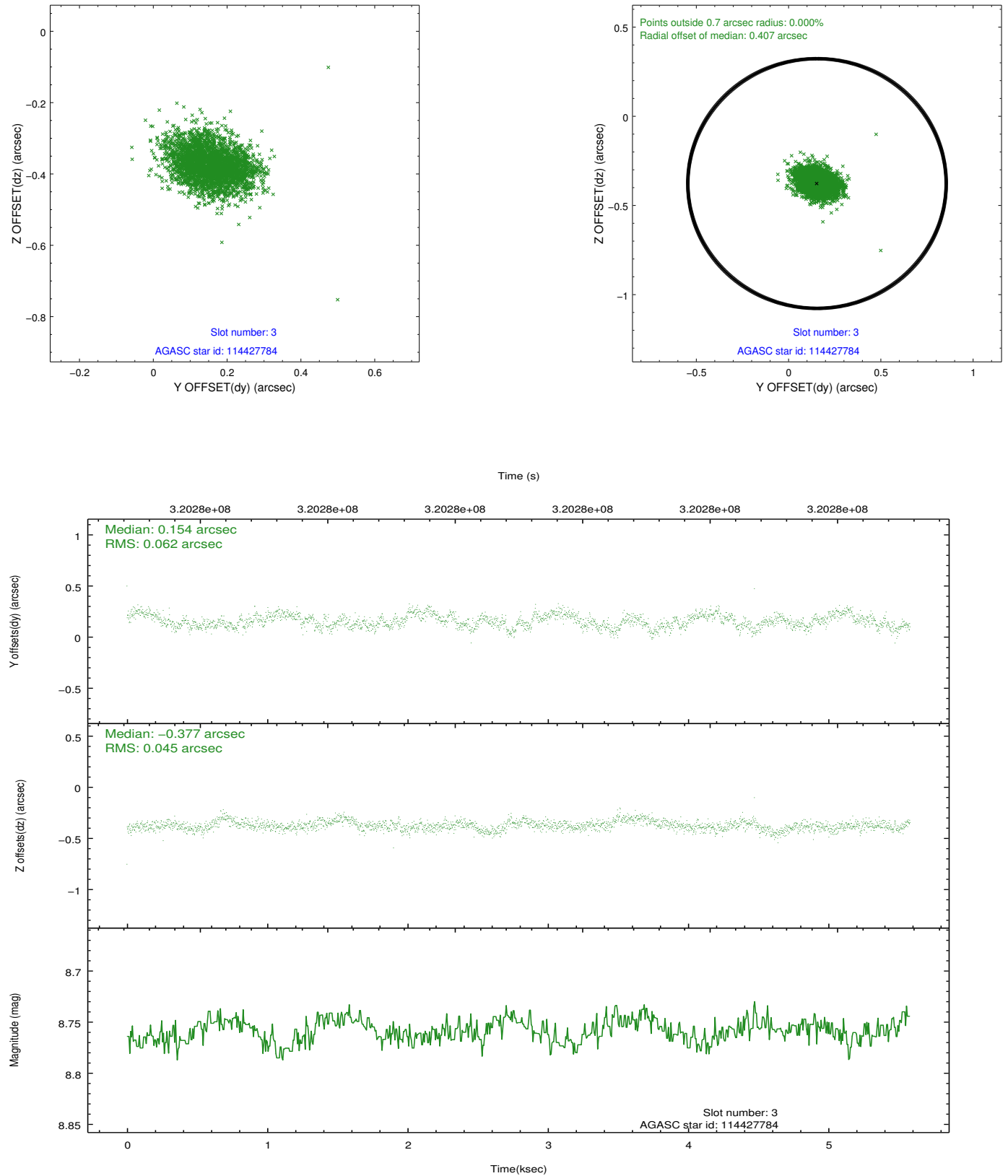


Slot Statistics

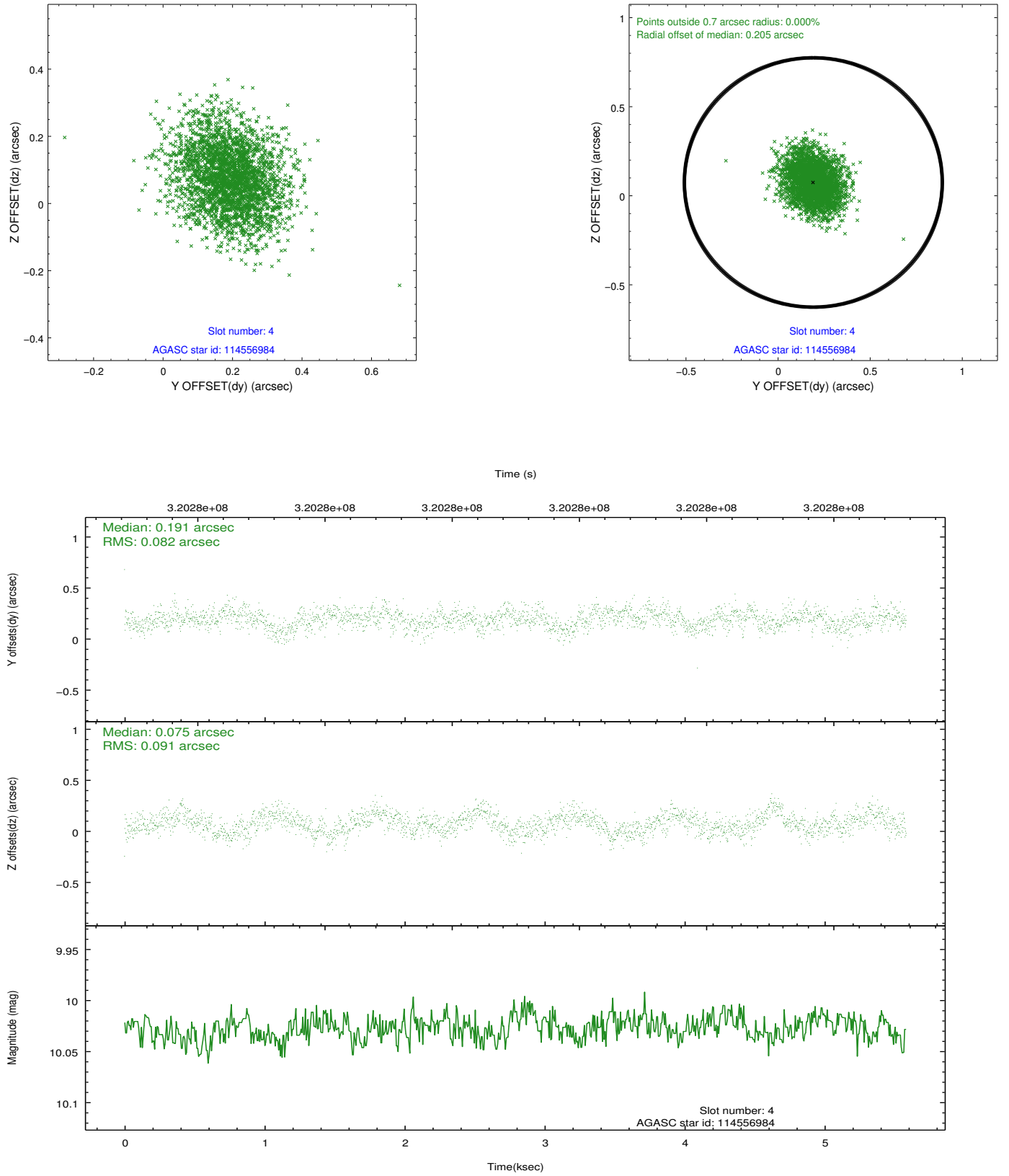
slot	status	id	mag	n_pts	med_dy	med_dz	dr1	dr2	ra	dec	mean_y	mean_z
0	FID	ACIS-S-1	7.21	1362	0.098	-0.057	0.007	0.012	0.000000	0.000000	931.01	-1730.09
1	FID	ACIS-S-5	7.24	1362	-0.119	0.077	0.007	0.011	0.000000	0.000000	-1817.59	166.51
2	FID	ACIS-S-6	7.34	1362	-0.000	-0.008	0.007	0.011	0.000000	0.000000	395.32	811.59
3	GUIDE	114427784	8.76	2723	0.154	-0.377	0.080	0.130	186.068583	9.508052	-1931.46	1488.93
4	GUIDE	114556984	10.03	2713	0.191	0.075	0.131	0.211	186.603051	9.417402	-2209.77	-415.52
5	GUIDE	114823704	9.58	2721	-0.136	1.011	0.121	0.191	186.069404	10.291925	888.70	1557.36
6	GUIDE	114957648	9.58	2718	-0.143	-0.437	0.105	0.171	186.459555	10.641928	2184.29	209.47
7	GUIDE	114823840	9.22	2721	-0.067	-0.272	0.127	0.188	186.195871	10.717151	2431.35	1147.97

2.4 Star Slots

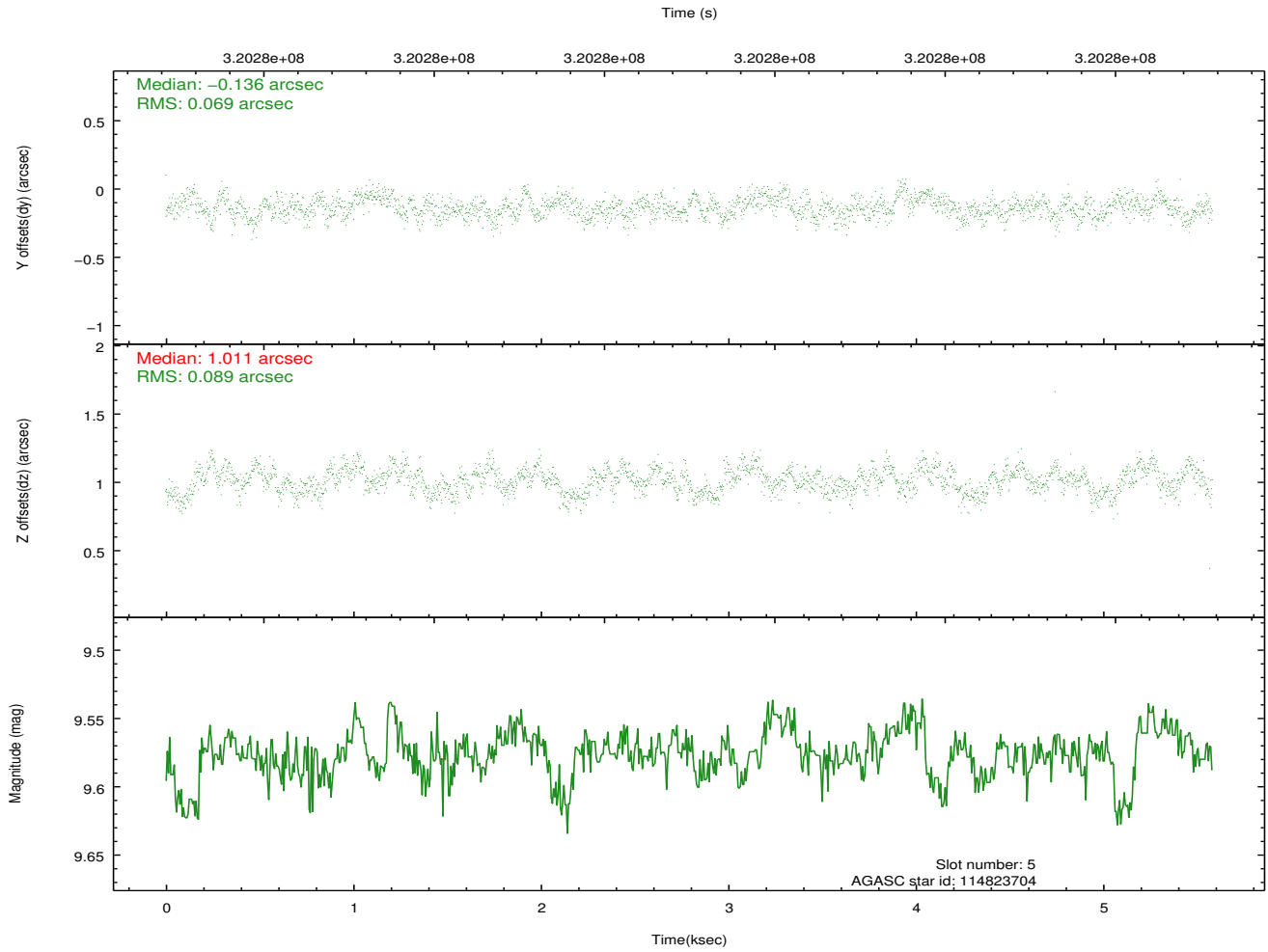
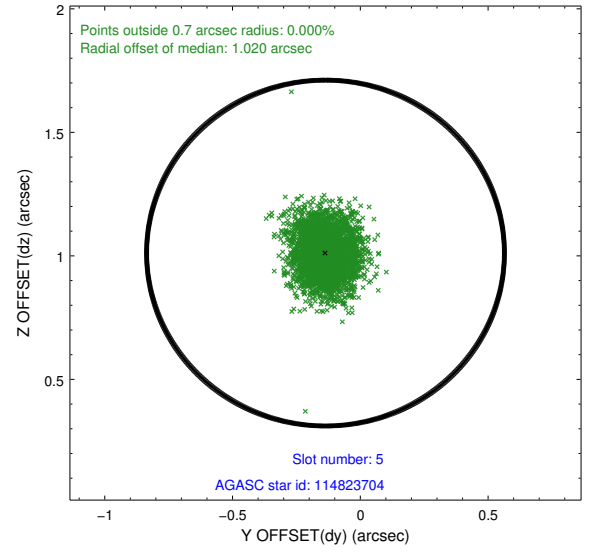
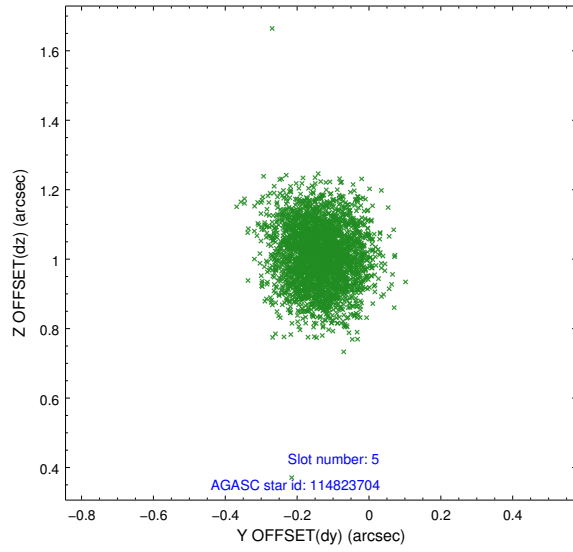
2.4.1 Slot 3



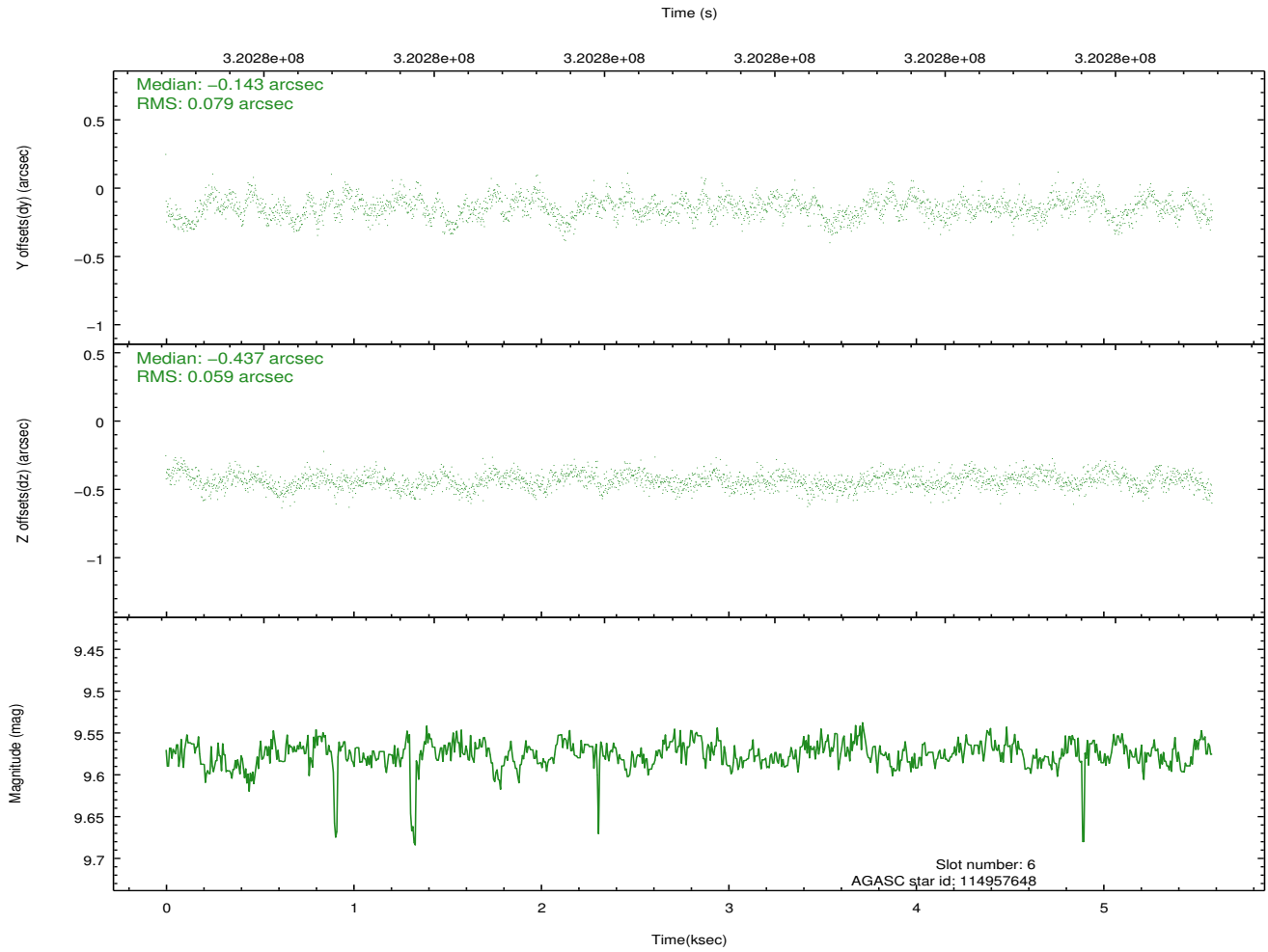
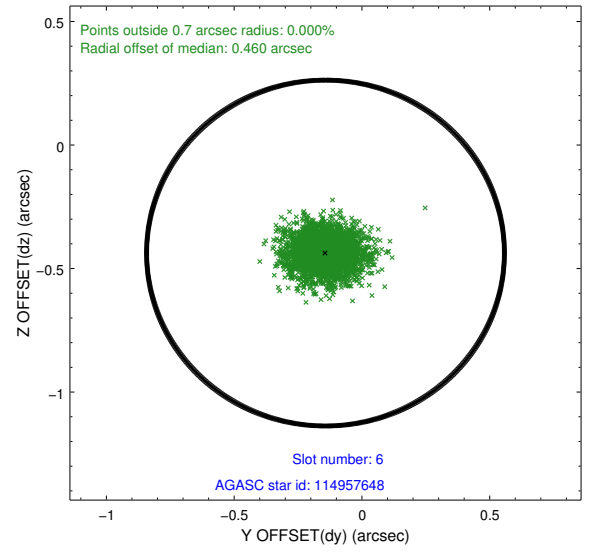
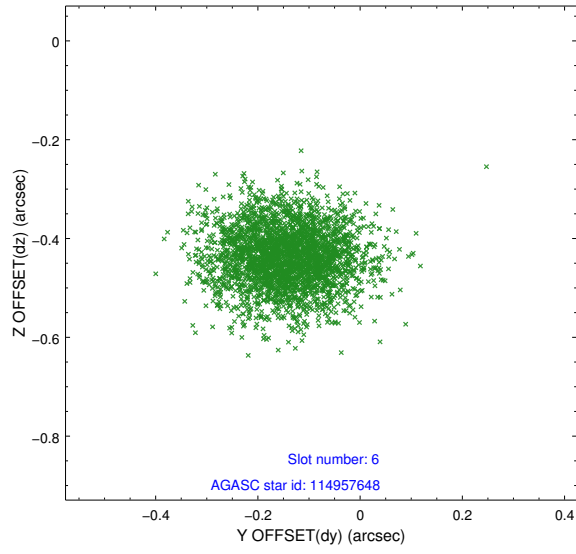
2.4.2 Slot 4



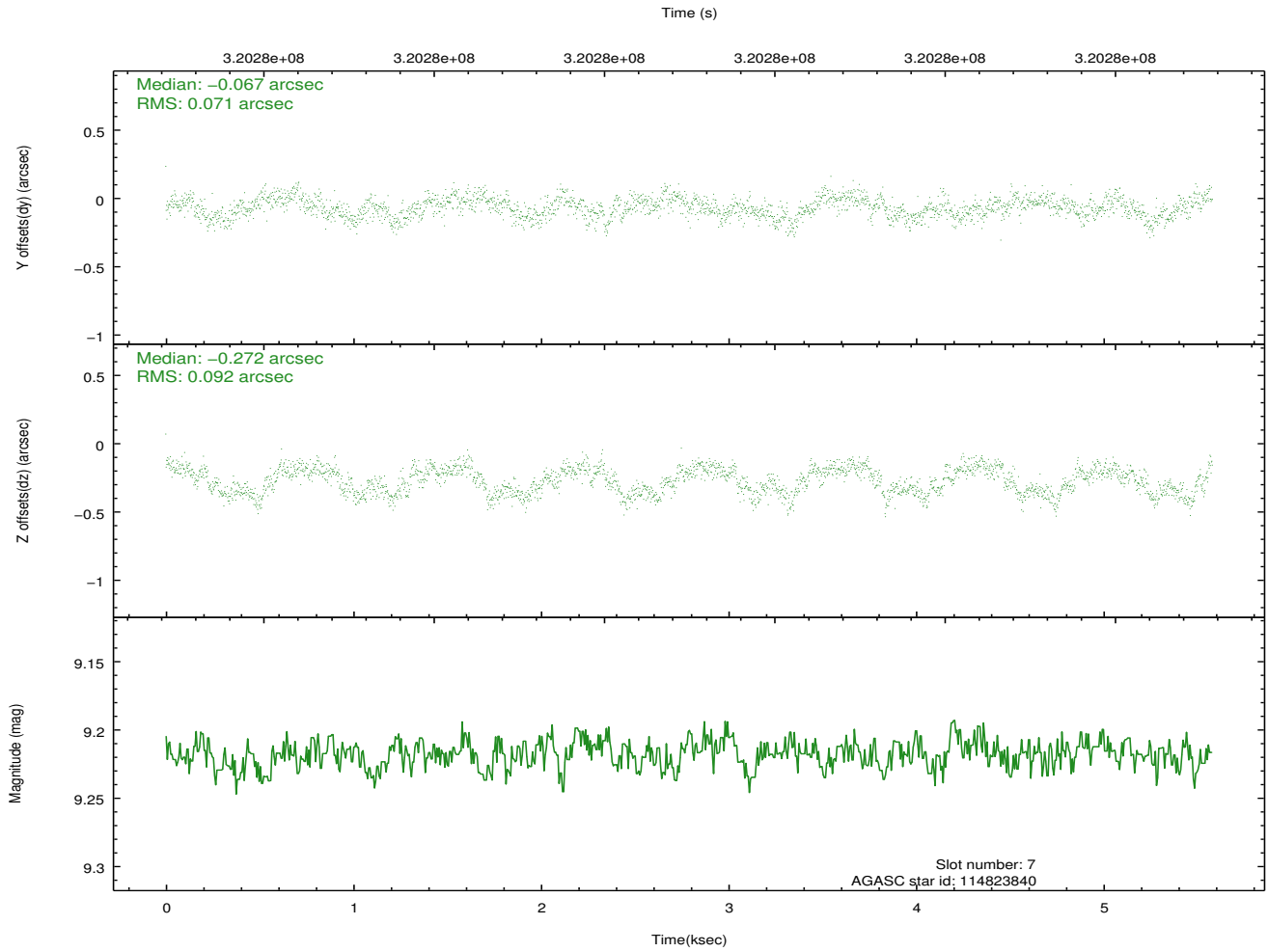
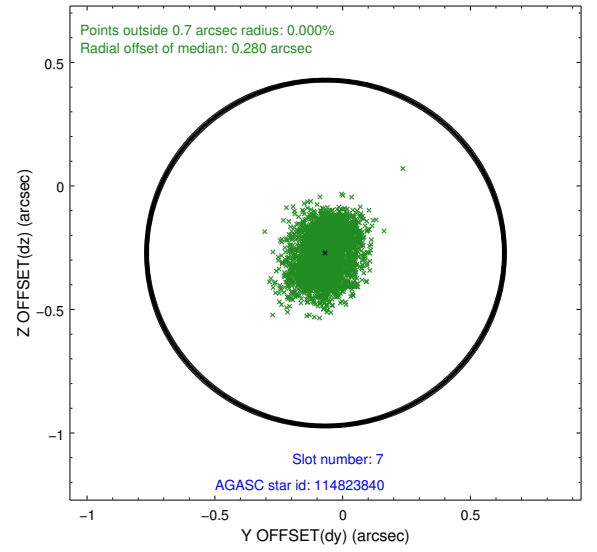
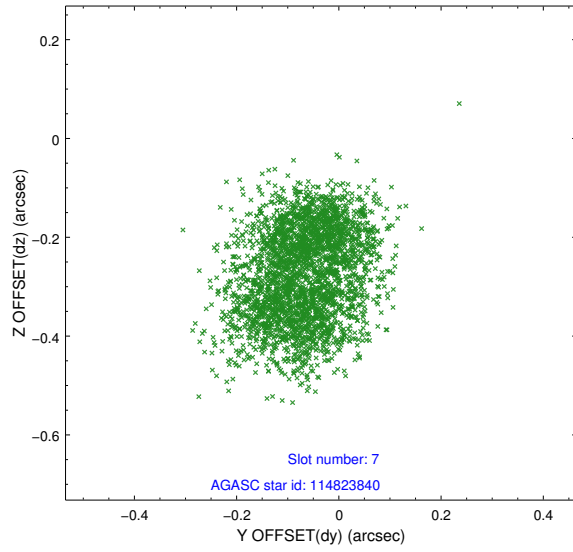
2.4.3 Slot 5



2.4.4 Slot 6

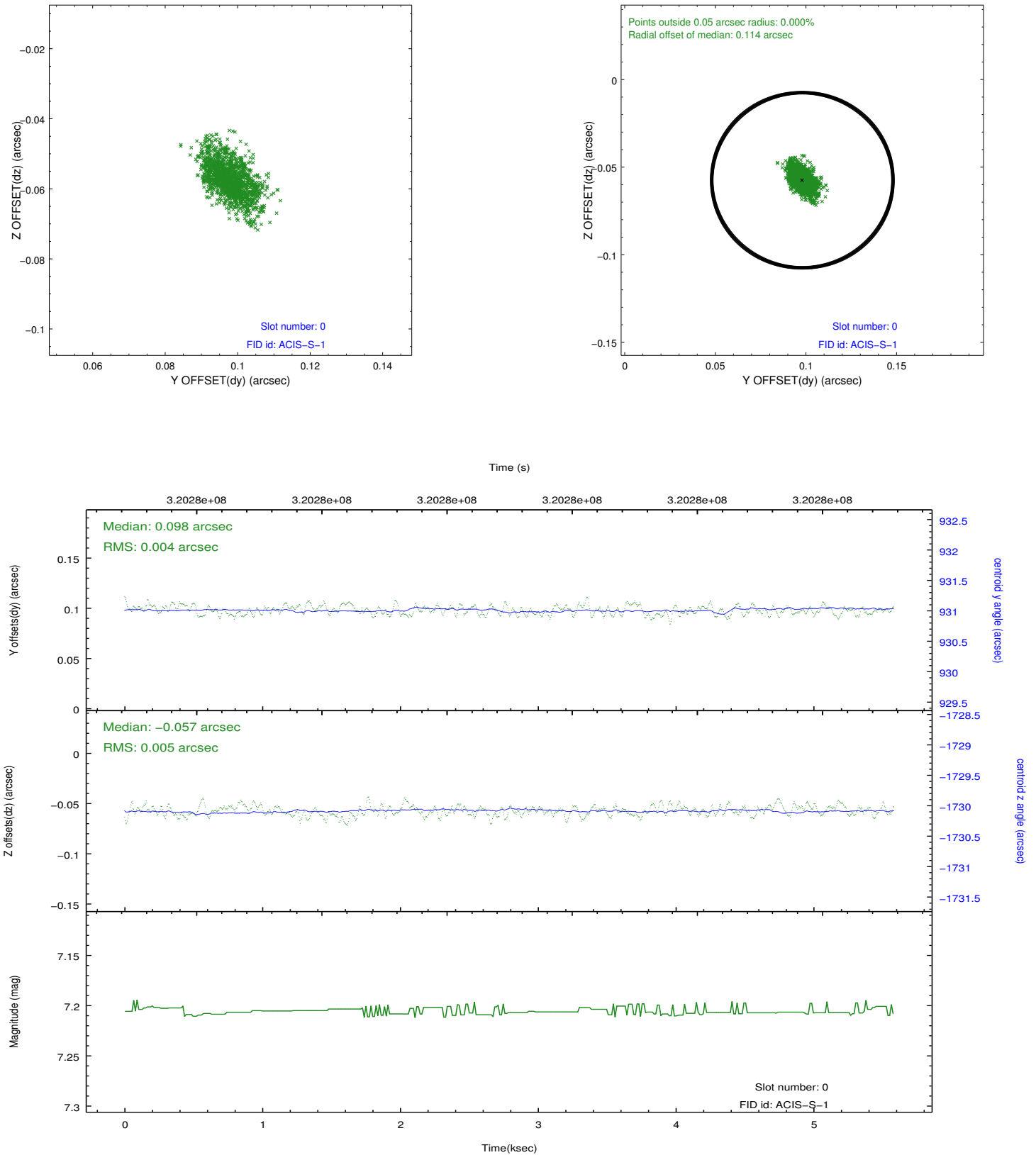


2.4.5 Slot 7

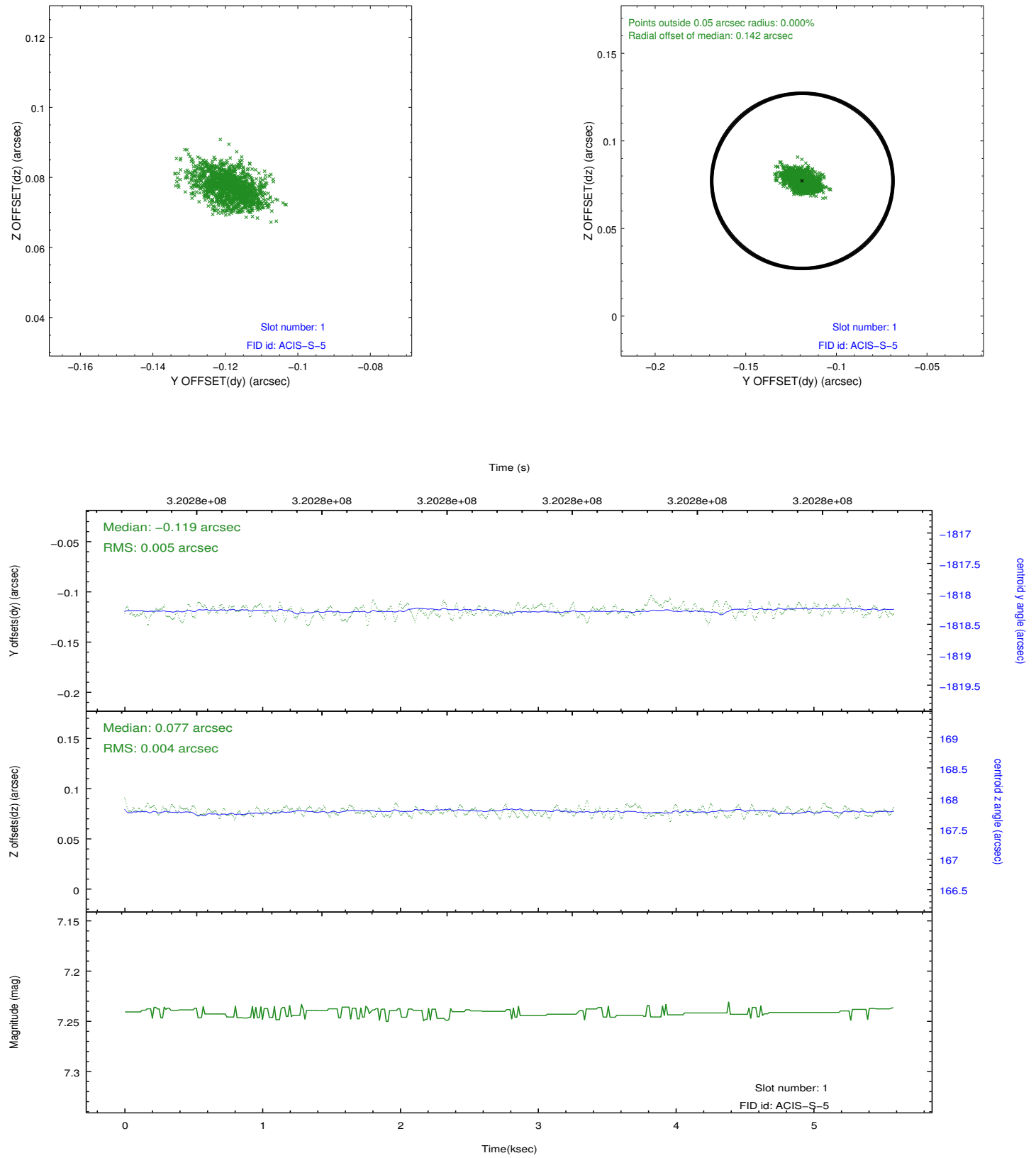


2.5 FID Slots

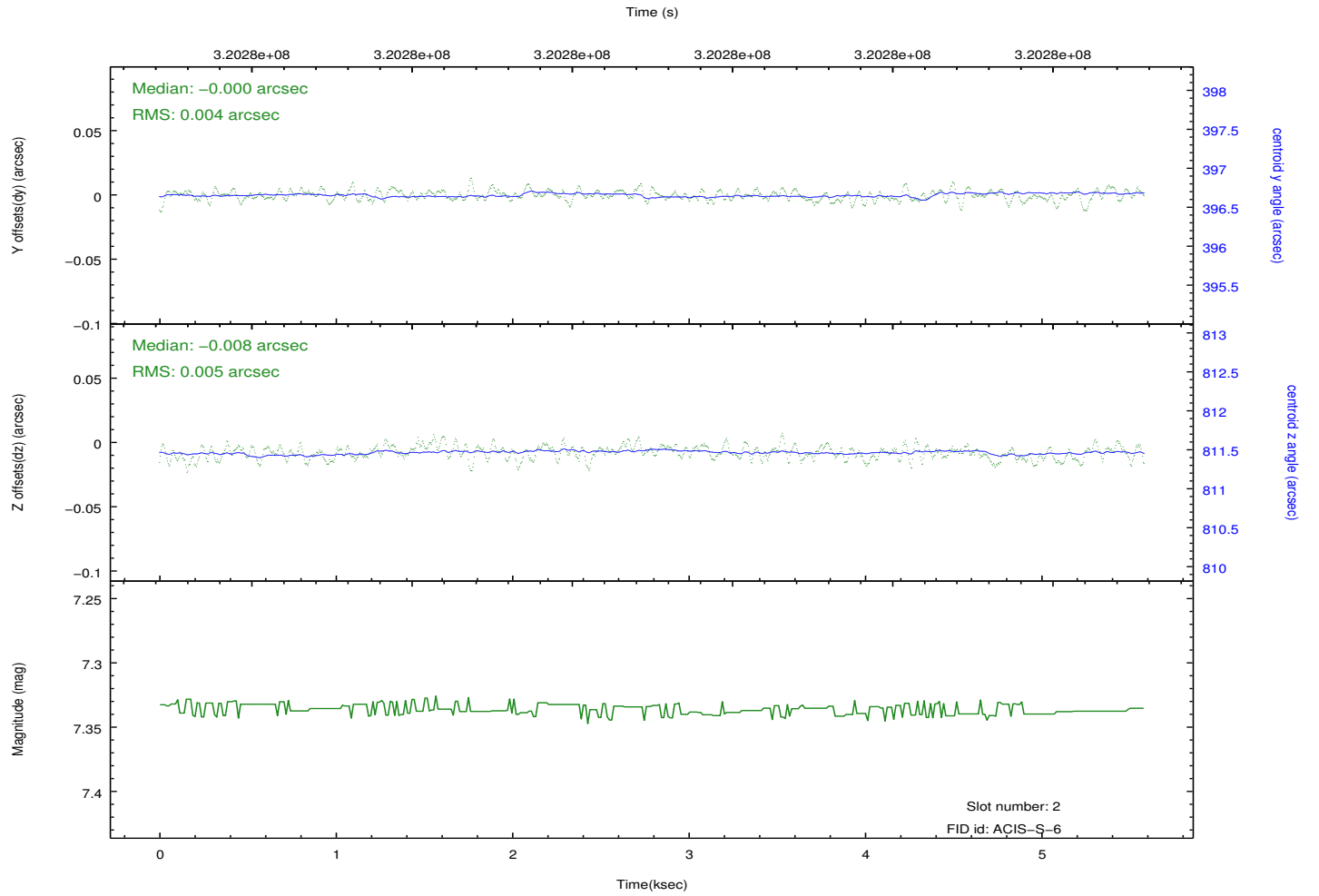
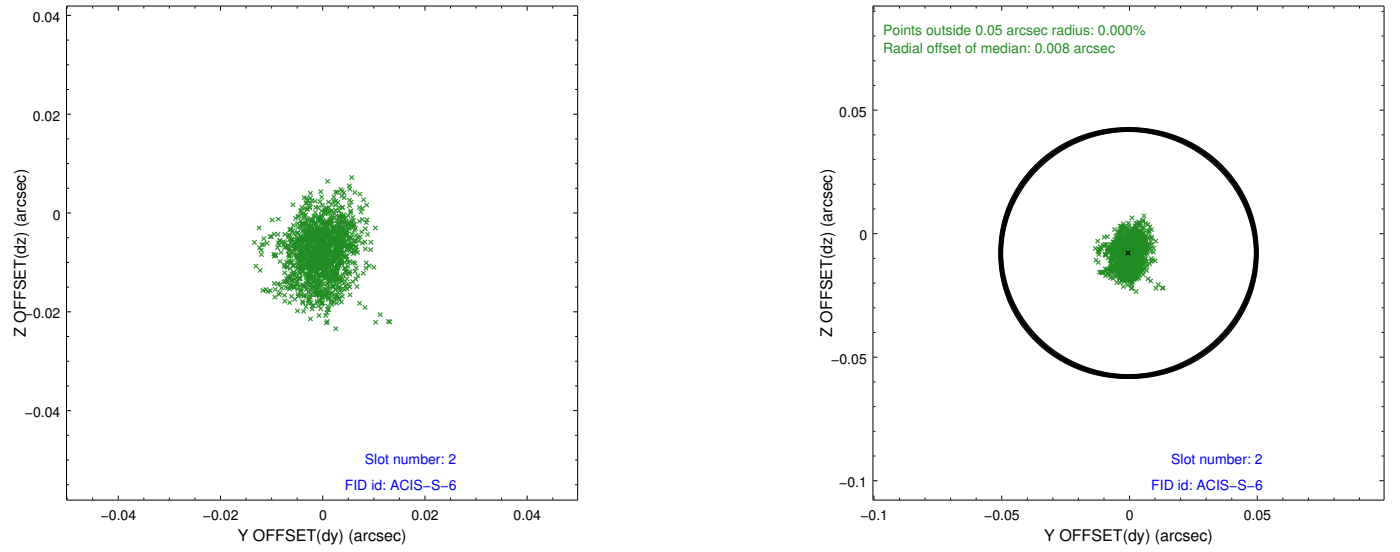
2.5.1 Slot 0



2.5.2 Slot 1



2.5.3 Slot 2



A Summary

A.1 Status

V&V Scientist	Jen Lauer
V&V Date (YYYY-MM-DD)	2012.05.13
V&V Edition	1
V&V Disposition and Status	OK
V&V Charge Time	5.15839998

A.2 Comments

Joint Proposal: Spitzer