

V&V Reference Report

L2 ASCDS Version : 8.4.4

Observation 8112 - L2 Version 2
Chandra X-Ray Center

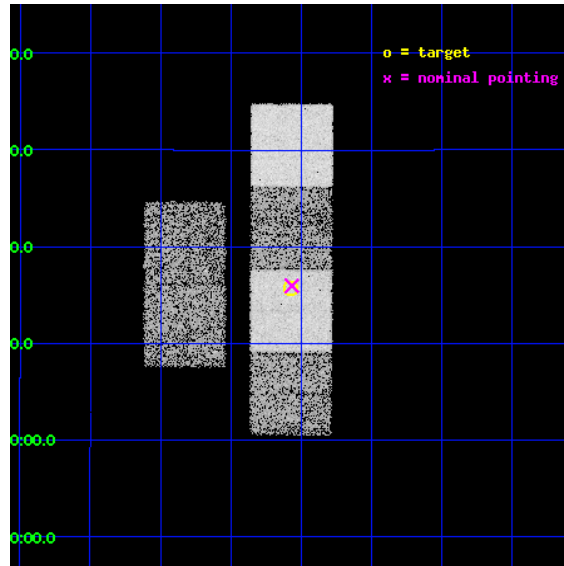
L2 Processing Date : May 10 2012

Contents

1	Front	2
2	OBI	3
2.1	OBI	3
2.1.1	Images	3
2.1.2	Bias	3
2.1.3	Parameters	4
2.1.4	Events	4
2.2	Compared Parameters	5
2.3	Aspect	6
2.4	Star Slots	9
2.4.1	Slot 3	9
2.4.2	Slot 4	10
2.4.3	Slot 5	11
2.4.4	Slot 6	12
2.4.5	Slot 7	13
2.5	FID Slots	14
2.5.1	Slot 0	14
2.5.2	Slot 1	15
2.5.3	Slot 2	16
A	Summary	17
A.1	Status	17
A.2	Comments	17

1 Front

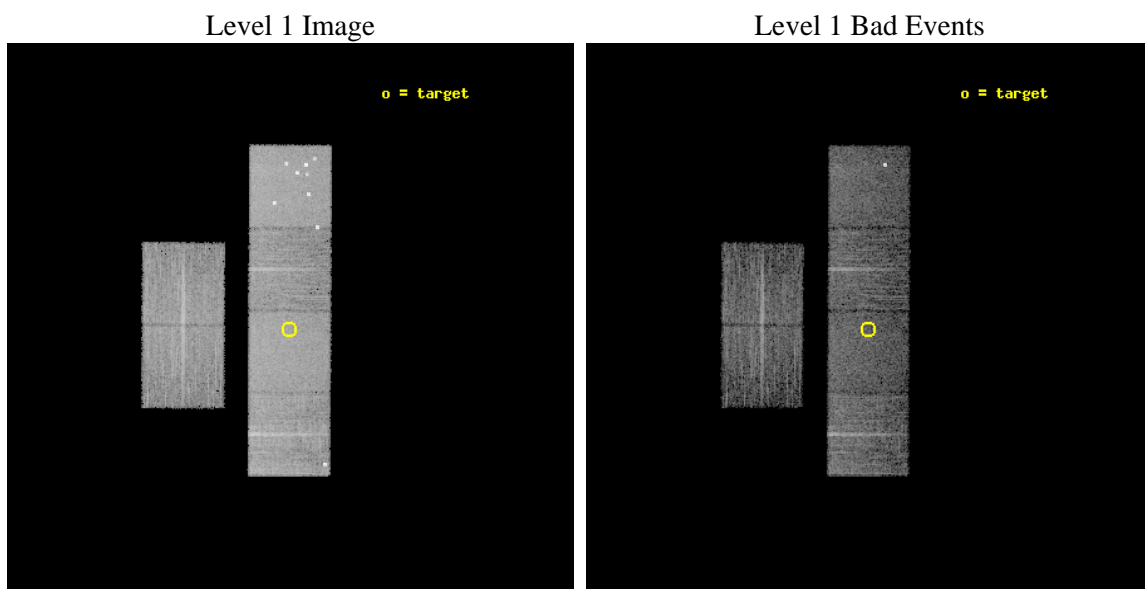
seq_num	900653	Sequence number
obs_id	8112	Observation id
title	The Duty Cycle of Supermassive Black Holes: X-raying Virgo	Proposa
observer	Prof Tommaso Treu	Principal investigator
object	1512	Source name
dtcycle	0	
cycle	P	events from which exps? Prim/Second/Both
ra_targ	188.394167	Observer's specified target RA [deg]
dec_targ	11.261889	Observer's specified target Dec [deg]
ra_nom	188.39149808167	Nominal RA [deg]
dec_nom	11.266035762377	Nominal Dec [deg]
roll_nom	90.262506330724	Nominal Roll [deg]
revision	2	Processing version of data
ontime	5155.199980855	Sum of GTIs [s]
livetime	5089.9217346086	Livetime [s]
ontime2	5155.199980855	Sum of GTIs [s]
ontime3	5155.199980855	Sum of GTIs [s]
ontime5	5155.199980855	Sum of GTIs [s]
ontime6	5155.199980855	Sum of GTIs [s]
ontime7	5155.199980855	Sum of GTIs [s]
ontime8	5151.9589505196	Sum of GTIs [s]
l2events	84757	Number of level 2 events



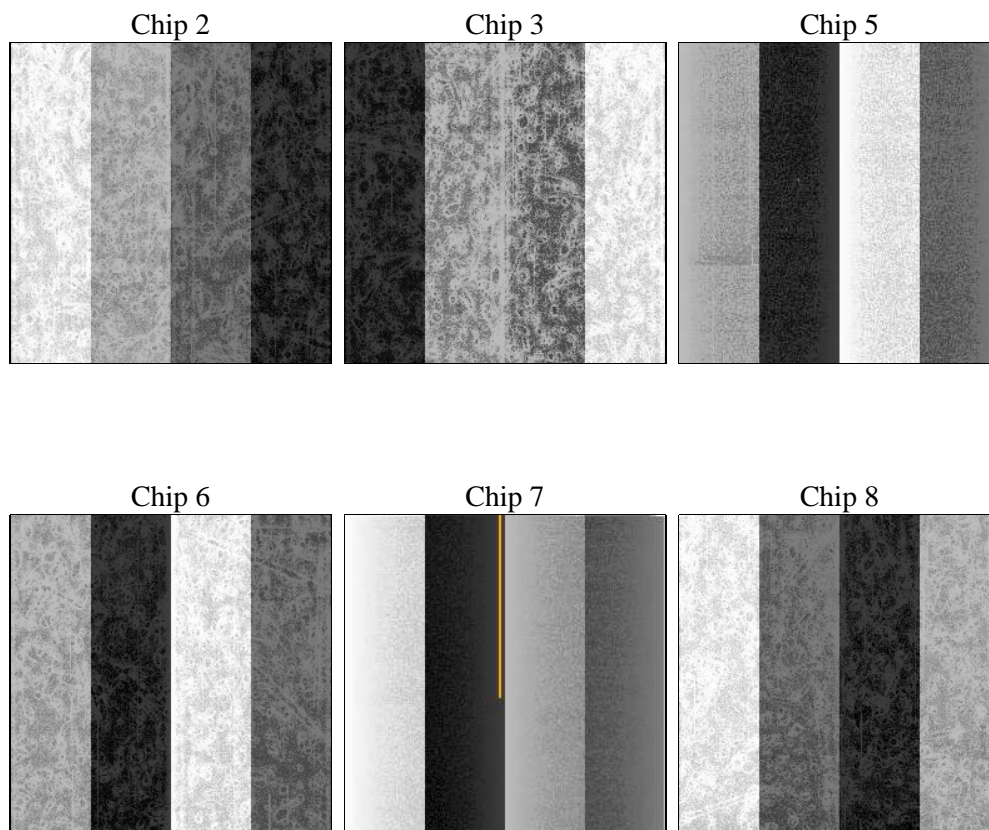
2 OBI

2.1 OBI

2.1.1 Images



2.1.2 Bias



2.1.3 Parameters

obi_num	1	Obi number	sched_exp_time	5400.000000	[s] Scheduled observation exposure time
ascdsver	8.4.4	Processing system revision	ontime	5155.199980855	Sum of GTIs [s]
caldsver	4.4.9	 	ontime2	5155.199980855	Sum of GTIs [s]
date	2012-05-10T08:36:33	Date and time of file creation	ontime3	5155.199980855	Sum of GTIs [s]
revision	2	Processing version of data	ontime5	5155.199980855	Sum of GTIs [s]
			ontime6	5155.199980855	Sum of GTIs [s]
			ontime7	5155.199980855	Sum of GTIs [s]
			ontime8	5151.9589505196	Sum of GTIs [s]
			l1events	382149	Number of level 1 events

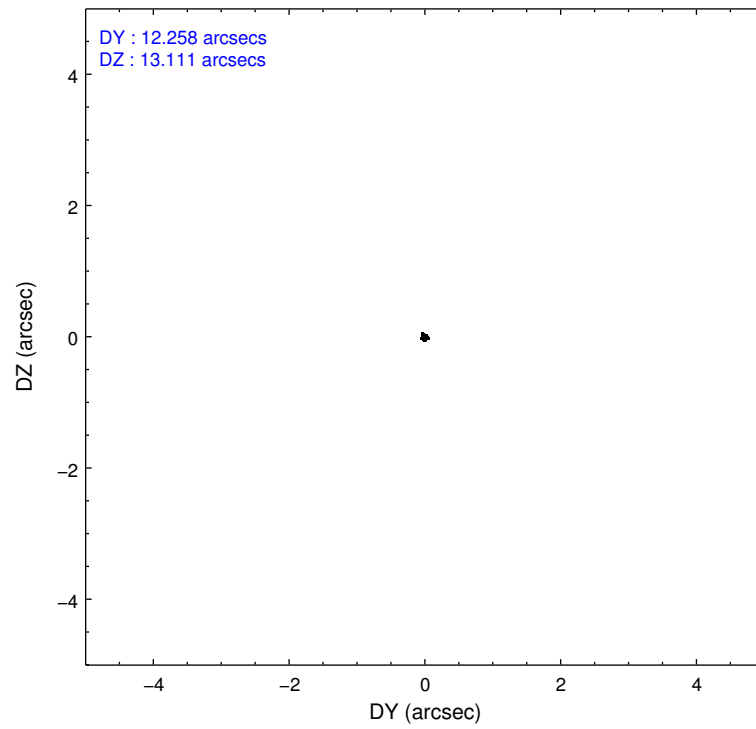
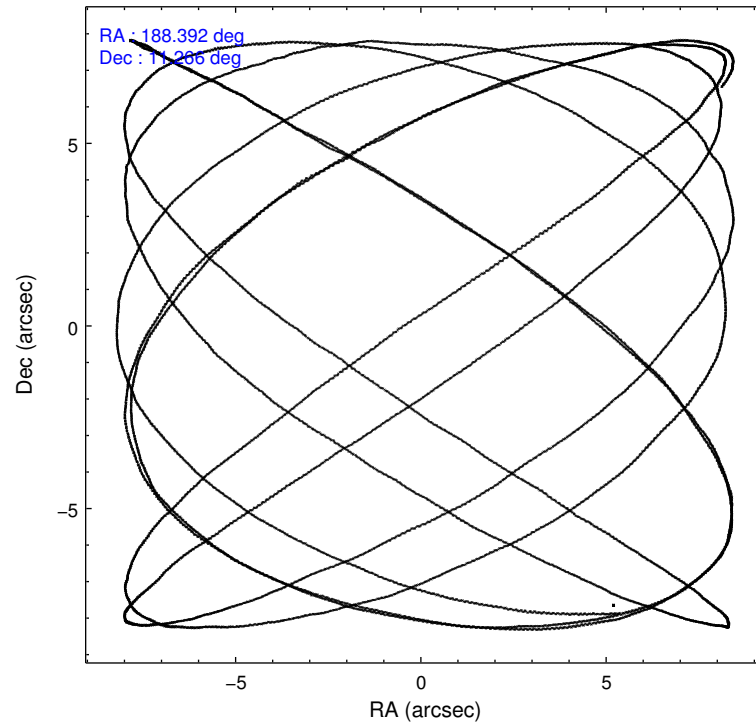
2.1.4 Events

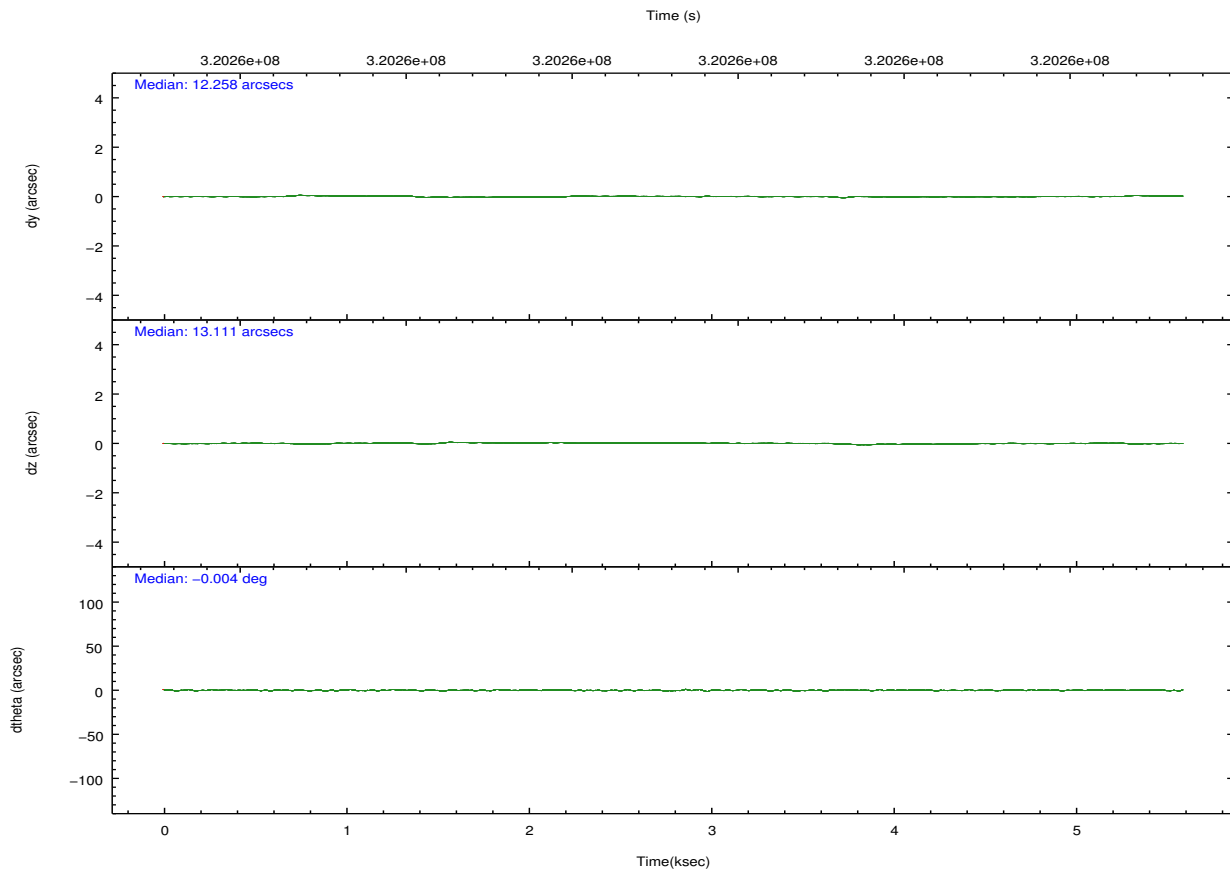
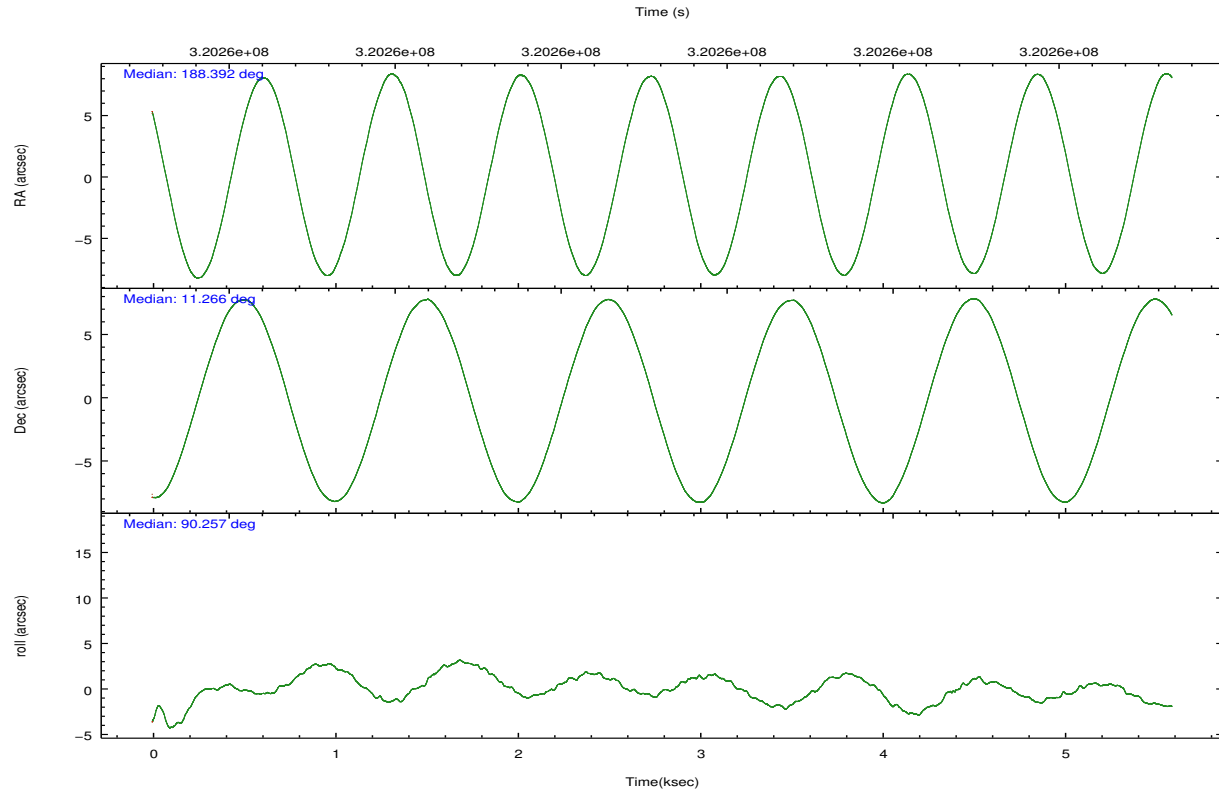
	ccd 2	ccd 3	ccd 5	ccd 6	ccd 7	ccd 8		ccd 2	ccd 3	ccd 5	ccd 6	ccd 7	ccd 8
level 1 events	53545	49670	87327	51115	70508	69984	grade 0 events	2749	2757	8232	2749	2659	6183
rejected events	47460	43442	43818	44617	41406	54069		5%	5%	9%	5%	3%	8%
rejected %	88%	87%	50%	87%	58%	77%	grade 1 events	37	37	114	19	73	69
								0%	0%	0%	0%	0%	0%
							grade 2 events	1251	1246	11840	1432	6084	3192
								2%	2%	13%	2%	8%	4%
							grade 3 events	566	525	1491	546	2408	1472
								1%	1%	1%	1%	3%	2%
							grade 4 events	539	577	1208	521	2454	1367
								1%	1%	1%	1%	3%	1%
							grade 5 events	2032	2201	5118	2359	6526	3048
								3%	4%	5%	4%	9%	4%
							grade 6 events	988	1136	20802	1265	15540	3709
								1%	2%	23%	2%	22%	5%
							grade 7 events	45383	41191	38522	42224	34764	50944
								84%	82%	44%	82%	49%	72%

2.2 Compared Parameters

Parameter	Planned	Actual	Parameter	Planned	Actual
Instrument	ACIS	ACIS	Obspar format version number	7	7
Detector	ACIS-235678	ACIS-235678	Obspar file type	PREDICTED	ACTUAL
Grating	NONE	NONE	Obspar update status	NONE	UPDATED
Data mode	FAINT	FAINT	CCD I0 on	N	N
Observation mode	POINTING	POINTING	CCD I1 on	N	N
[deg] Pointing RA	188.405929	188.3914980816702	CCD I2 on	O1	Y
[deg] Pointing Dec	11.242574	11.26603576237669	CCD I3 on	O2	Y
[deg] Pointing Roll	90.103059	90.2625063307238	CCD S0 on	N	N
[mm] SIM focus pos	-0.684267	-0.6828225247311905	CCD S1 on	O3	Y
[mm] SIM defocus	0	0.001444936568705701	CCD S2 on	Y	Y
[mm] SIM translation stage pos	-190.132523	-190.1400660498719	CCD S3 on	Y	Y
[mm] SIM translation stage offset	0	0.00754346686406393	CCD S4 on	O4	Y
[s] Observation start time (MET)	320258006.184000	320257560.907	CCD S5 on	N	N
Observation start date	2008-02-24T16:32:21	2008-02-24T16:26:00	Number of optional ACIS chips dropped	0	0
[s] Observation end time (MET)	320263406.184000	320263540.75729	On-chip summing requested	N	N
Observation end date	2008-02-24T18:02:21	2008-02-24T18:05:40	Subarray requested	NONE	NONE
Read mode	TIMED	TIMED	Alternating exposures requested	N	N
			[s] Primary exposure time	0.000000	3.2

2.3 Aspect



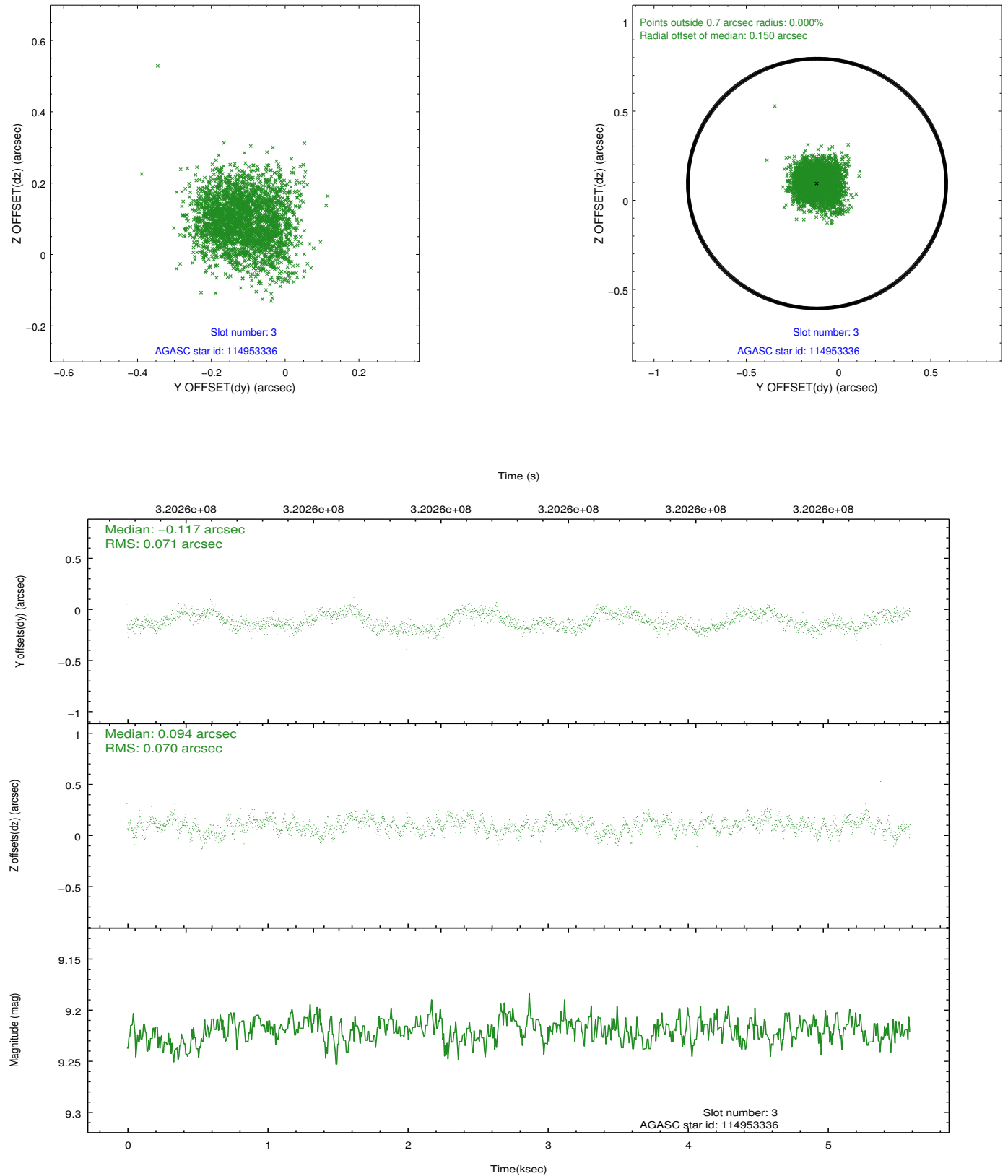


Slot Statistics

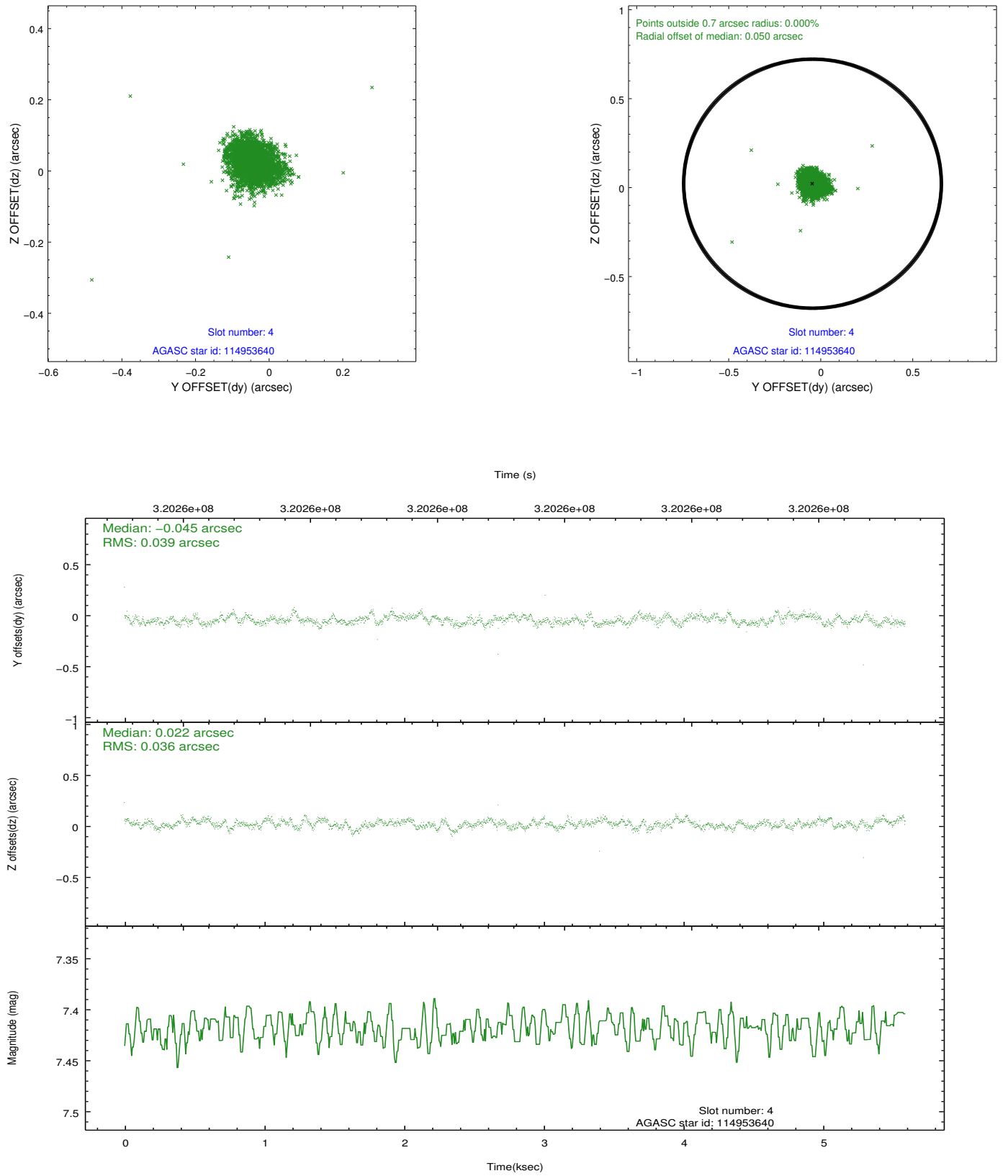
slot	status	id	mag	n_pts	med_dy	med_dz	dr1	dr2	ra	dec	mean_y	mean_z
0	FID	ACIS-S-2	7.10	1364	-0.022	-0.051	0.007	0.010	0.000000	0.000000	-765.18	-1734.49
1	FID	ACIS-S-4	7.20	1364	0.118	0.025	0.005	0.010	0.000000	0.000000	2147.75	172.95
2	FID	ACIS-S-5	7.24	1364	-0.127	0.035	0.006	0.010	0.000000	0.000000	-1816.75	167.87
3	GUIDE	114953336	9.22	2724	-0.117	0.094	0.106	0.163	188.911176	11.326132	299.41	-1783.67
4	GUIDE	114953640	7.42	2728	-0.045	0.022	0.054	0.085	188.794711	11.547726	1097.40	-1373.60
5	GUIDE	114955592	8.11	2727	-0.027	-0.063	0.074	0.112	188.657433	11.300977	209.74	-888.69
6	GUIDE	114956088	7.81	2728	0.072	0.018	0.064	0.099	188.583972	10.921101	-1158.26	-626.90
7	GUIDE	114956456	8.17	2727	0.109	-0.074	0.066	0.108	188.716512	10.836292	-1464.21	-1095.78

2.4 Star Slots

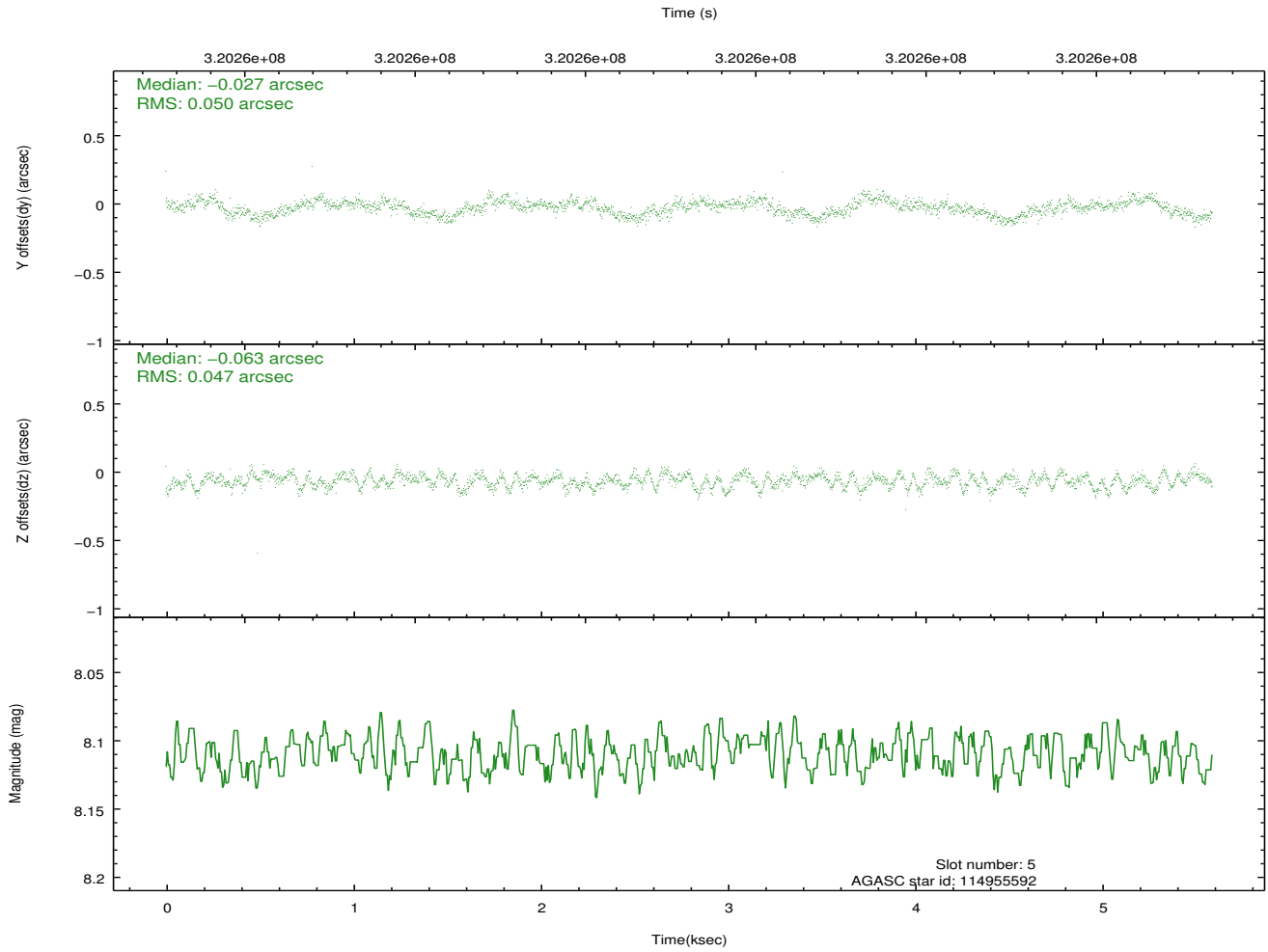
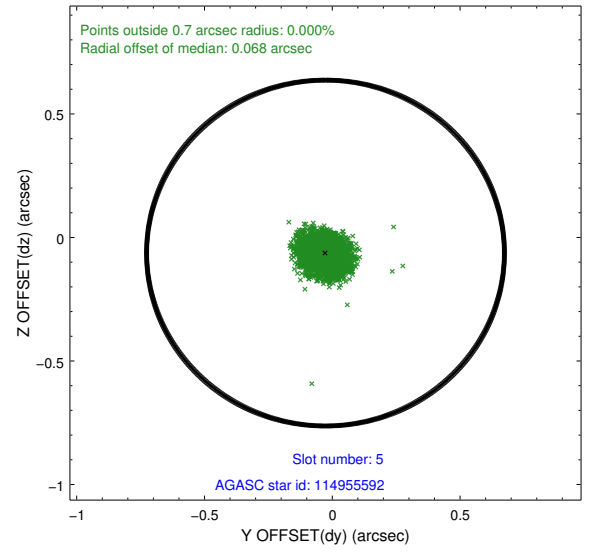
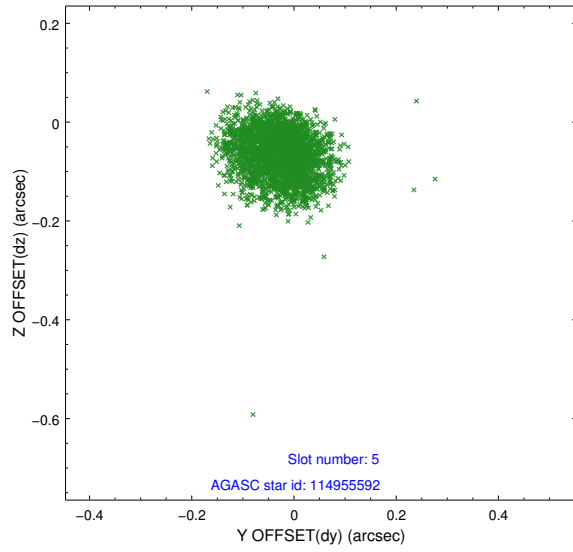
2.4.1 Slot 3



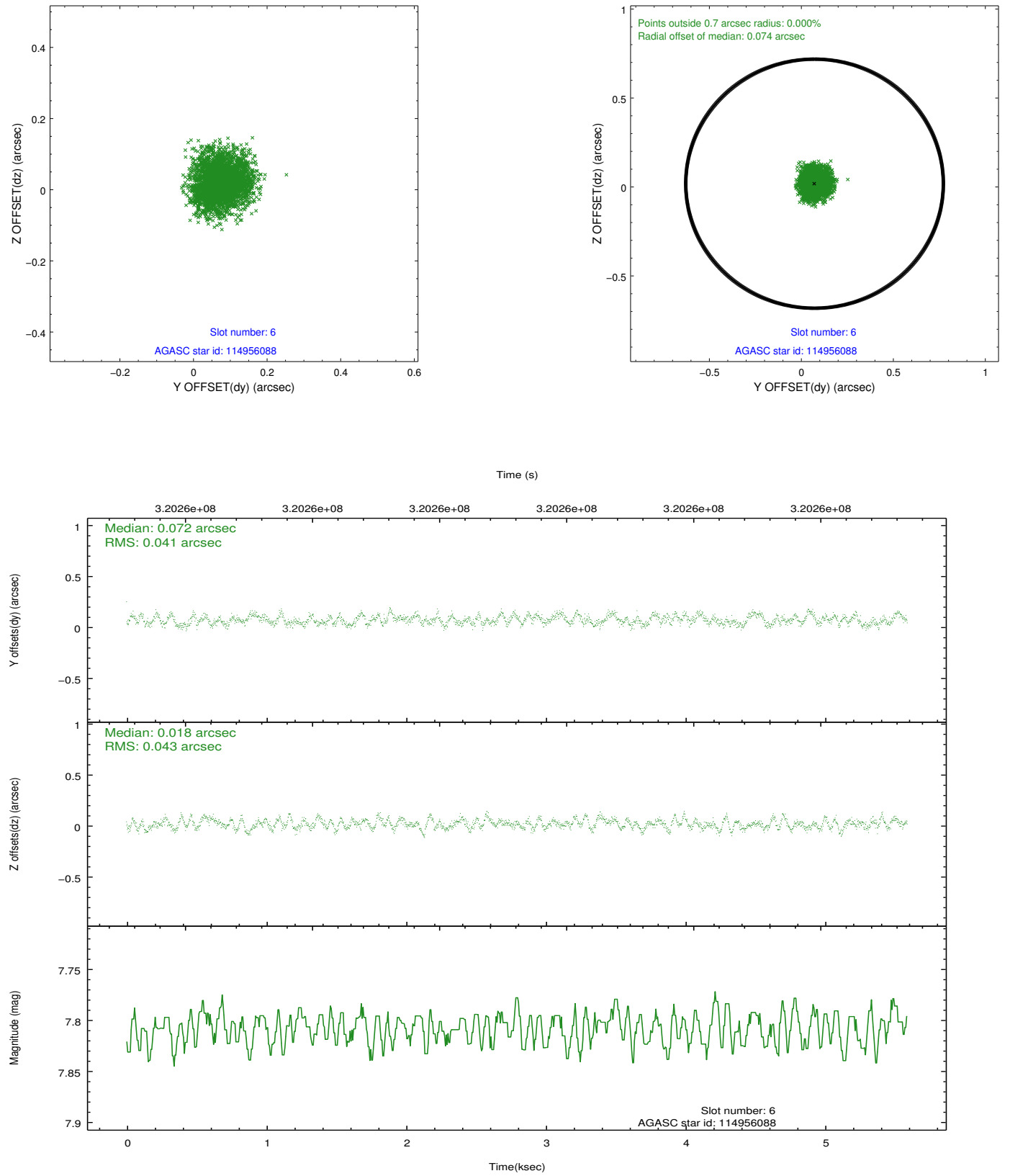
2.4.2 Slot 4



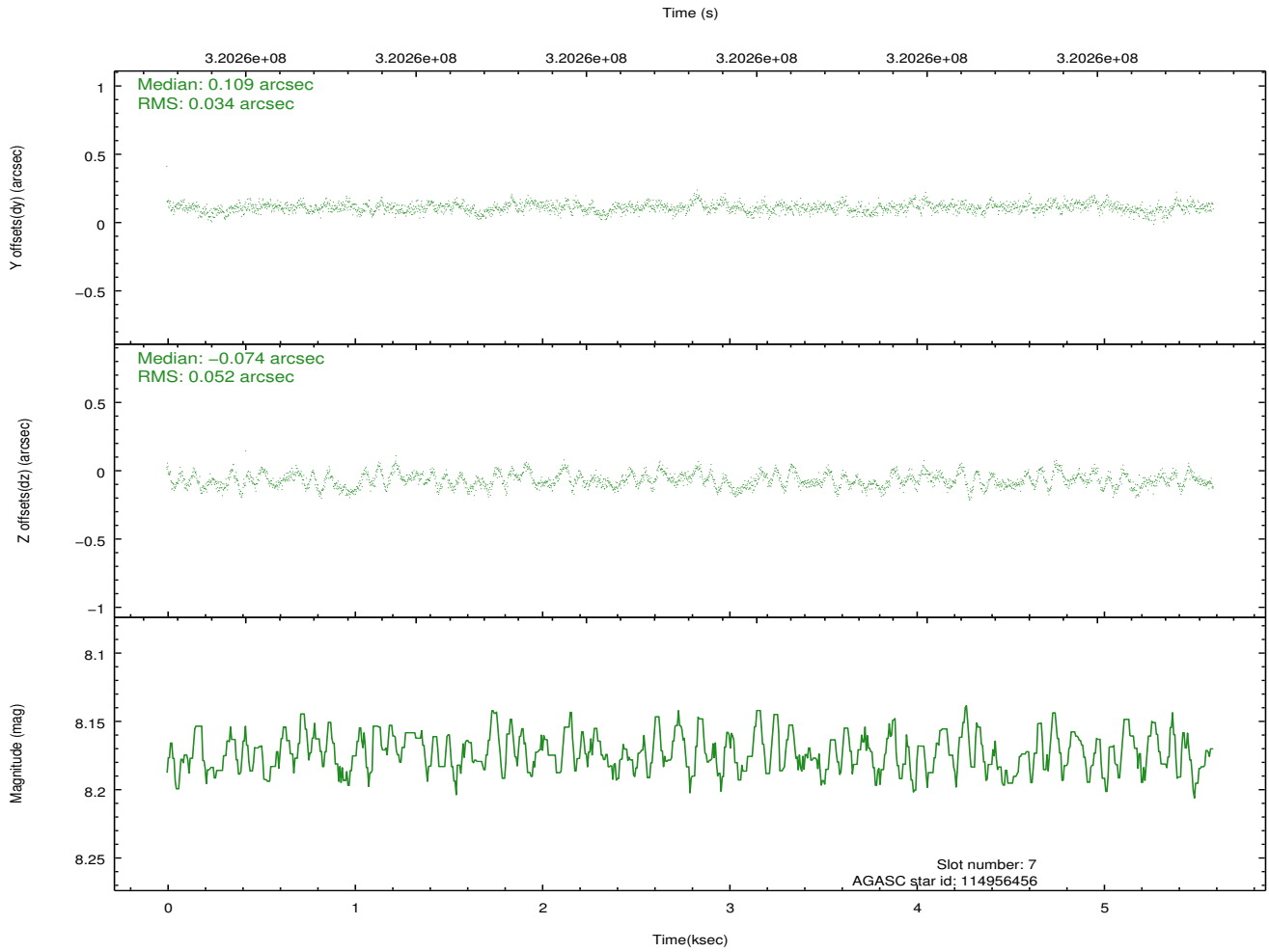
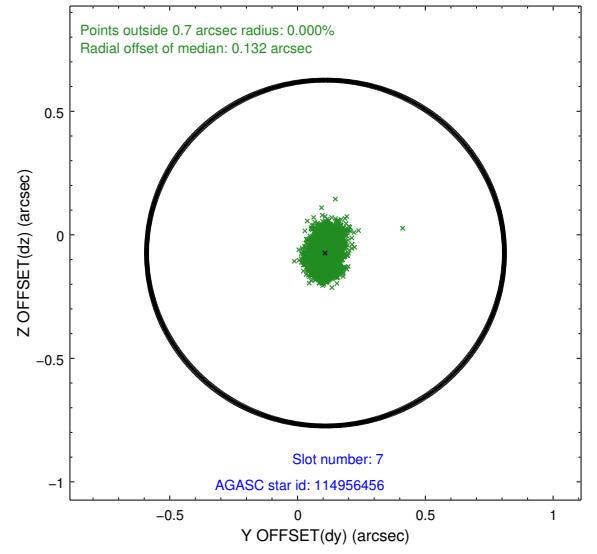
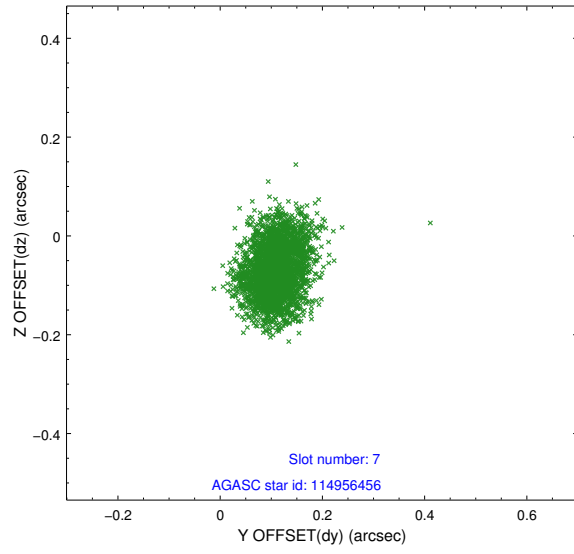
2.4.3 Slot 5



2.4.4 Slot 6

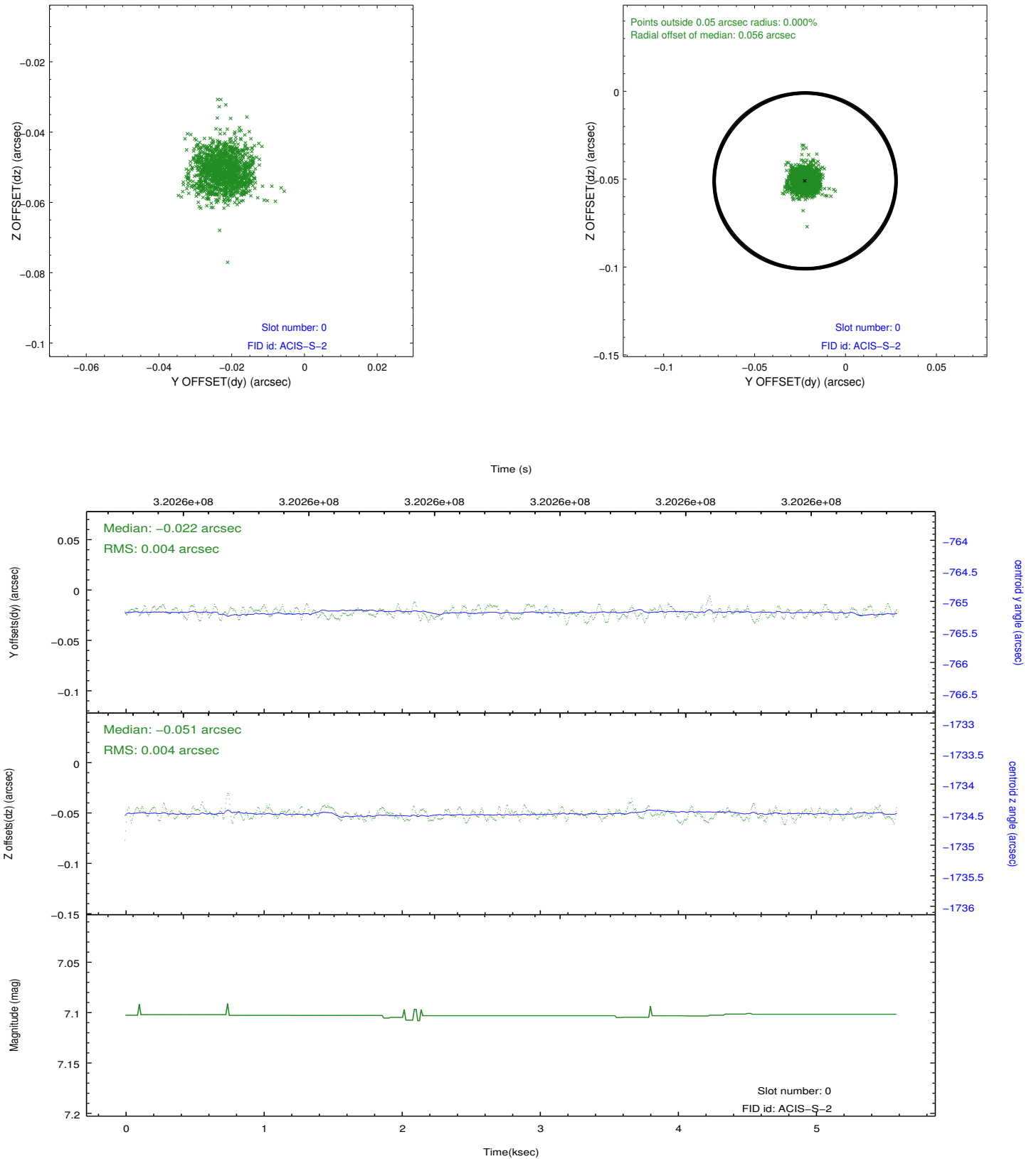


2.4.5 Slot 7

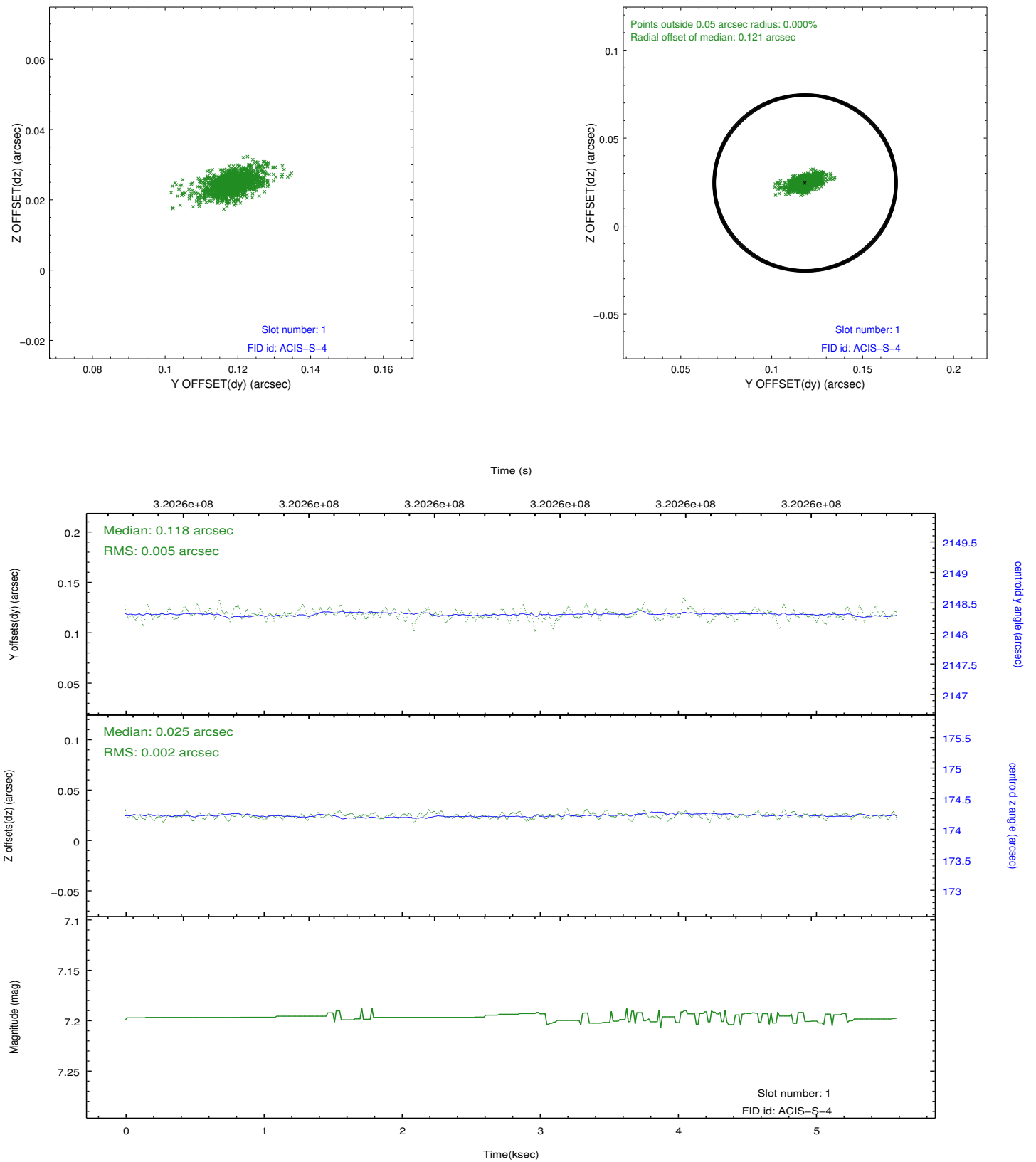


2.5 FID Slots

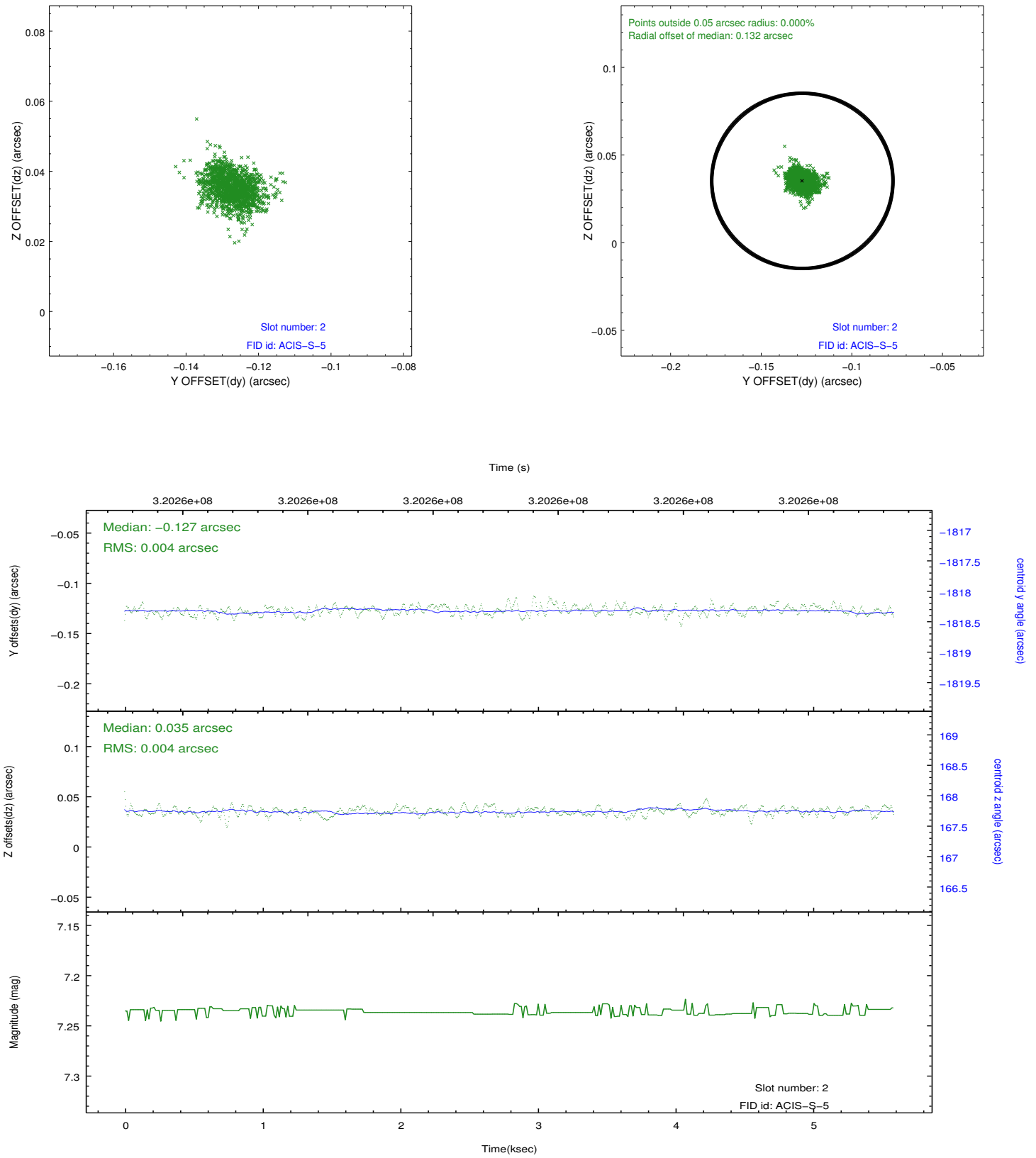
2.5.1 Slot 0



2.5.2 Slot 1



2.5.3 Slot 2



A Summary

A.1 Status

V&V Scientist	Jen Lauer
V&V Date (YYYY-MM-DD)	2012.05.13
V&V Edition	1
V&V Disposition and Status	OK
V&V Charge Time	5.15519998

A.2 Comments

Joint Proposal: Spitzer