

V&V Reference Report

L2 ASCDS Version : 8.4.4

Observation 8106 - L2 Version 2
Chandra X-Ray Center

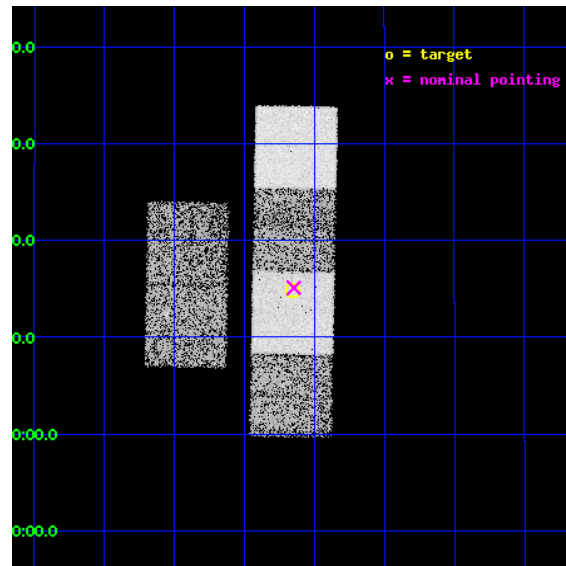
L2 Processing Date : May 10 2012

Contents

1	Front	2
2	OBI	3
2.1	OBI	3
2.1.1	Images	3
2.1.2	Bias	3
2.1.3	Parameters	4
2.1.4	Events	4
2.2	Compared Parameters	5
2.3	Aspect	6
2.4	Star Slots	9
2.4.1	Slot 3	9
2.4.2	Slot 4	10
2.4.3	Slot 5	11
2.4.4	Slot 6	12
2.4.5	Slot 7	13
2.5	FID Slots	14
2.5.1	Slot 0	14
2.5.2	Slot 1	15
2.5.3	Slot 2	16
A	Summary	17
A.1	Status	17
A.2	Comments	17

1 Front

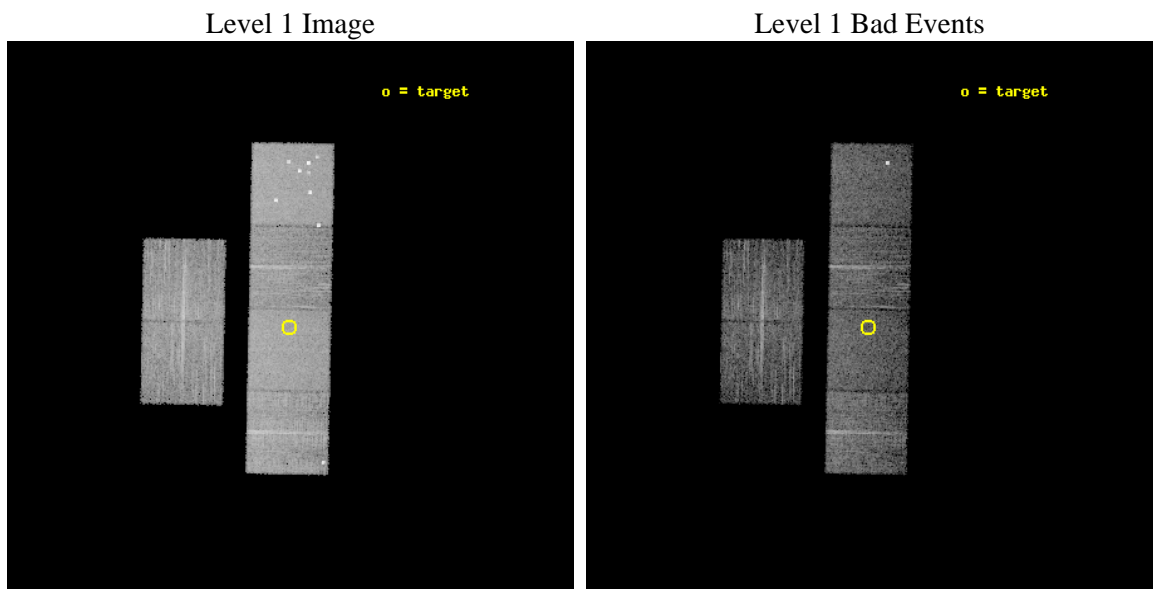
seq_num	900647	Sequence number
obs_id	8106	Observation id
title	The Duty Cycle of Supermassive Black Holes: X-raying Virgo	Proposa
observer	Prof Tommaso Treu	Principal investigator
object	1886	Source name
dtcycle	0	
cycle	P	events from which exps? Prim/Second/Both
ra_targ	190.414167	Observer's specified target RA [deg]
dec_targ	12.247889	Observer's specified target Dec [deg]
ra_nom	190.4114400237	Nominal RA [deg]
dec_nom	12.251858026915	Nominal Dec [deg]
roll_nom	91.078718715224	Nominal Roll [deg]
revision	2	Processing version of data
ontime	5158.199285984	Sum of GTIs [s]
livetime	5092.8830607302	Livetime [s]
ontime2	5158.2403259873	Sum of GTIs [s]
ontime3	5158.0761659741	Sum of GTIs [s]
ontime5	5158.1582459807	Sum of GTIs [s]
ontime6	5158.1172059774	Sum of GTIs [s]
ontime7	5158.199285984	Sum of GTIs [s]
ontime8	5154.7940860987	Sum of GTIs [s]
l2events	82975	Number of level 2 events



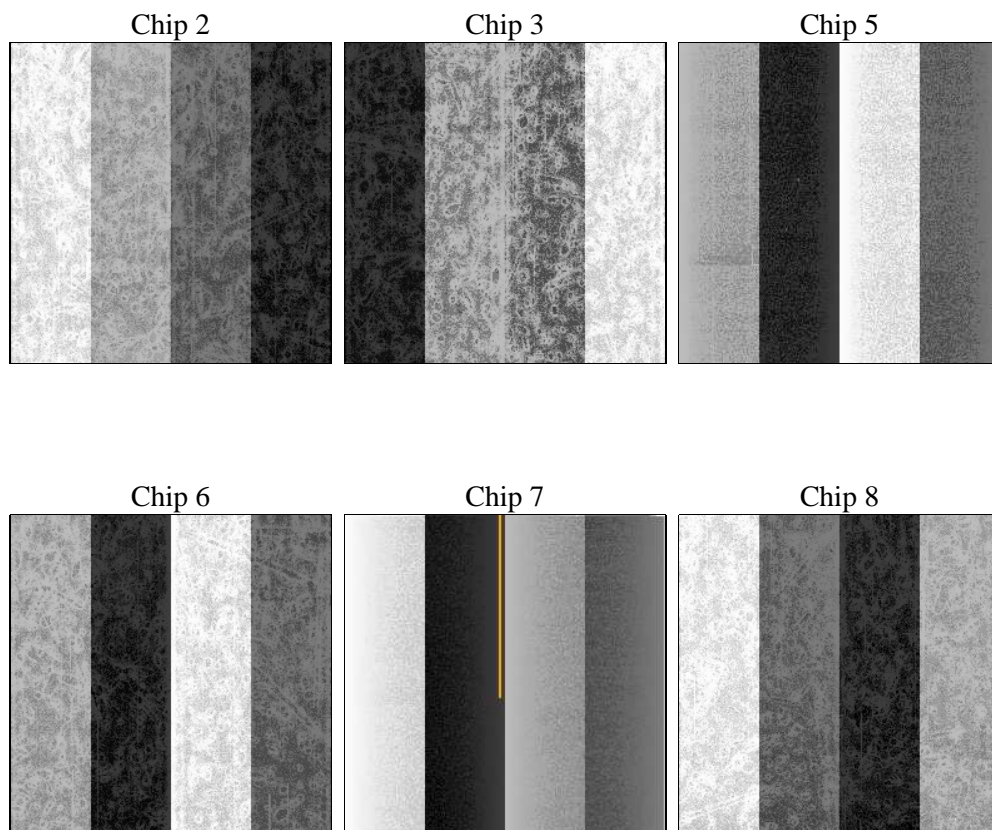
2 OBI

2.1 OBI

2.1.1 Images



2.1.2 Bias



2.1.3 Parameters

obi_num	1	Obi number	sched_exp_time	5400.000000	[s] Scheduled observation exposure time
ascdsver	8.4.4	Processing system revision	ontime	5158.199285984	Sum of GTIs [s]
caldsver	4.4.9	 	ontime2	5158.2403259873	Sum of GTIs [s]
date	2012-05-10T08:29:13	Date and time of file creation	ontime3	5158.0761659741	Sum of GTIs [s]
revision	2	Processing version of data	ontime5	5158.1582459807	Sum of GTIs [s]
			ontime6	5158.1172059774	Sum of GTIs [s]
			ontime7	5158.199285984	Sum of GTIs [s]
			ontime8	5154.7940860987	Sum of GTIs [s]
			l1events	375858	Number of level 1 events

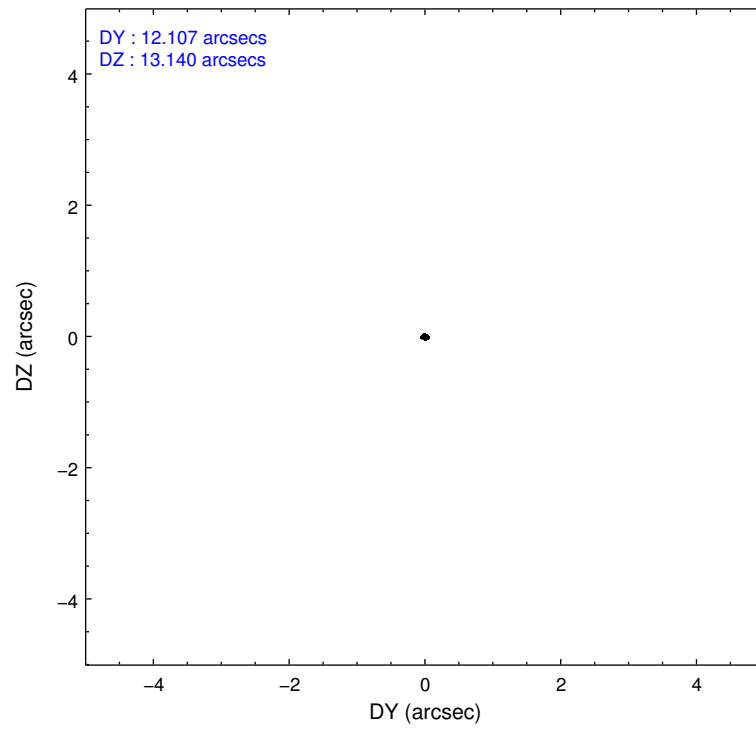
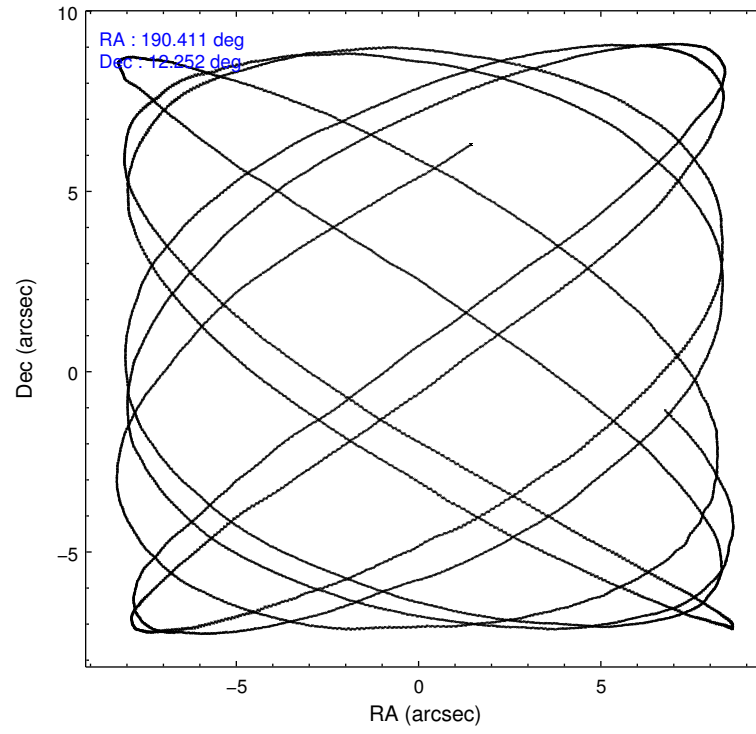
2.1.4 Events

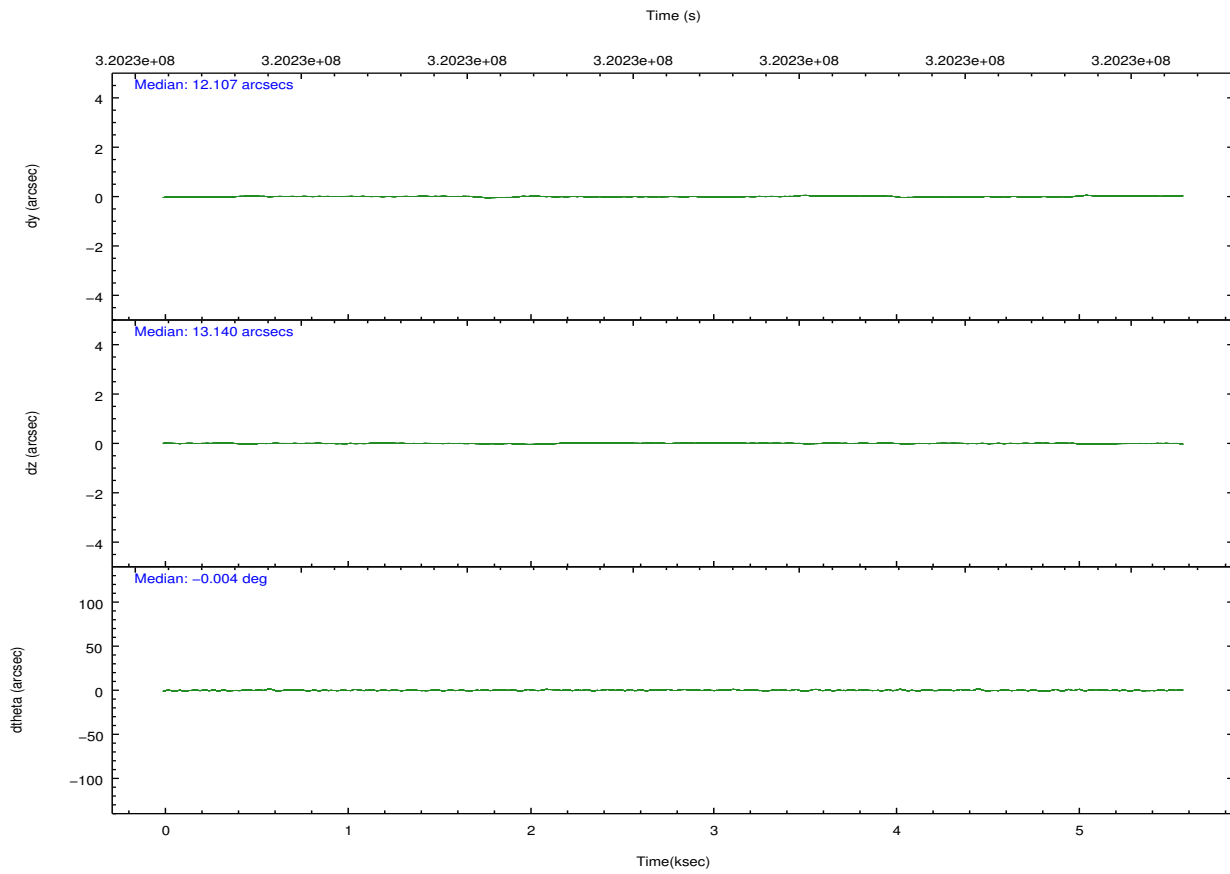
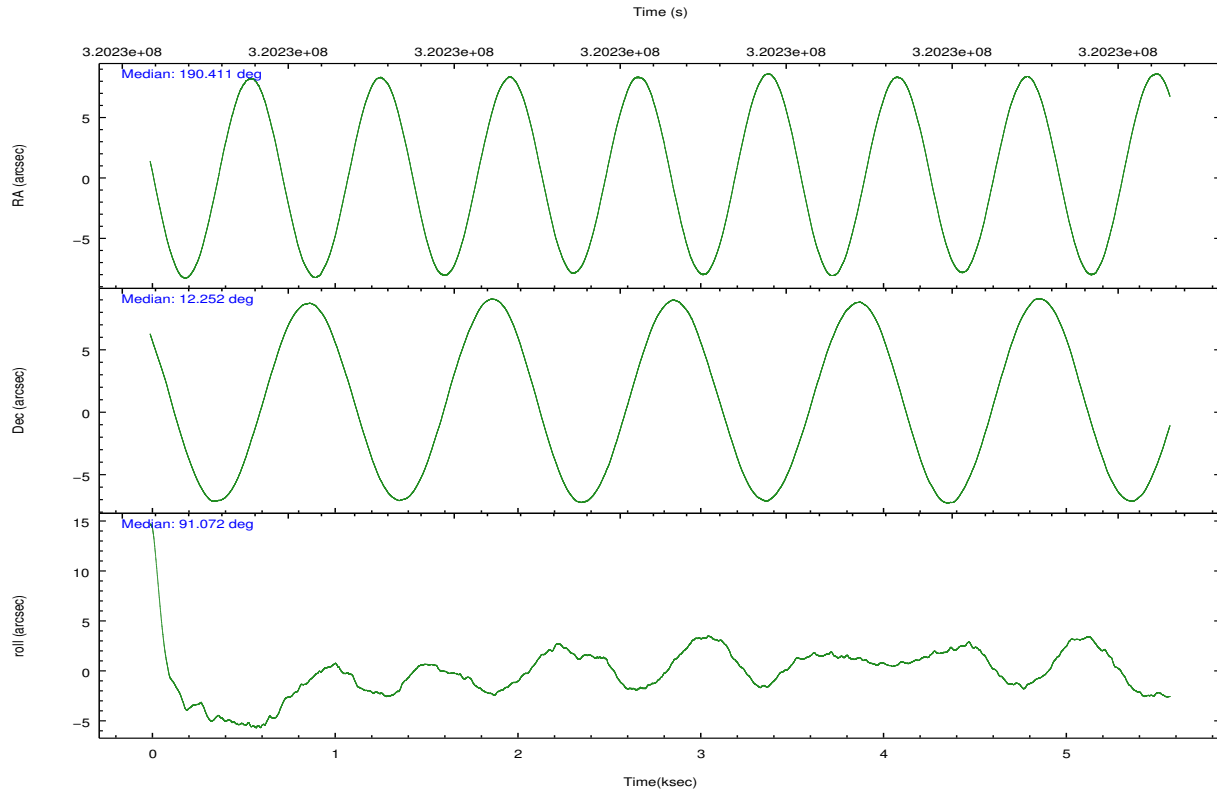
	ccd 2	ccd 3	ccd 5	ccd 6	ccd 7	ccd 8		ccd 2	ccd 3	ccd 5	ccd 6	ccd 7	ccd 8
level 1 events	52319	48171	85541	51199	69532	69096	grade 0 events	2416	2683	7483	2337	2390	5427
rejected events	46595	42163	43125	45011	40847	53815		4%	5%	8%	4%	3%	7%
rejected %	89%	87%	50%	87%	58%	77%	grade 1 events	43	28	107	31	67	67
								0%	0%	0%	0%	0%	0%
							grade 2 events	1236	1201	11768	1353	5769	3306
								2%	2%	13%	2%	8%	4%
							grade 3 events	585	524	1346	574	2437	1441
								1%	1%	1%	1%	3%	2%
							grade 4 events	526	571	1166	572	2408	1289
								1%	1%	1%	1%	3%	1%
							grade 5 events	2015	2254	5349	2310	6544	3075
								3%	4%	6%	4%	9%	4%
							grade 6 events	965	1034	20677	1352	15699	3825
								1%	2%	24%	2%	22%	5%
							grade 7 events	44533	39876	37645	42670	34218	50666
								85%	82%	44%	83%	49%	73%

2.2 Compared Parameters

Parameter	Planned	Actual	Parameter	Planned	Actual
Instrument	ACIS	ACIS	Obspar format version number	7	7
Detector	ACIS-235678	ACIS-235678	Obspar file type	PREDICTED	ACTUAL
Grating	NONE	NONE	Obspar update status	NONE	UPDATED
Data mode	FAINT	FAINT	CCD I0 on	N	N
Observation mode	POINTING	POINTING	CCD I1 on	N	N
[deg] Pointing RA	190.426250	190.4114400236964	CCD I2 on	O1	Y
[deg] Pointing Dec	12.228740	12.25185802691497	CCD I3 on	O2	Y
[deg] Pointing Roll	90.918937	91.07871871522377	CCD S0 on	N	N
[mm] SIM focus pos	-0.684267	-0.6828225247311905	CCD S1 on	O3	Y
[mm] SIM defocus	0	0.001444936568705701	CCD S2 on	Y	Y
[mm] SIM translation stage pos	-190.132523	-190.1400660498719	CCD S3 on	Y	Y
[mm] SIM translation stage offset	0	0.00754346686406393	CCD S4 on	O4	Y
[s] Observation start time (MET)	320227624.184000	320227237.30553	CCD S5 on	N	N
Observation start date	2008-02-24T08:05:59	2008-02-24T08:00:37	Number of optional ACIS chips dropped	0	0
[s] Observation end time (MET)	320233024.184000	320233250.98082	On-chip summing requested	N	N
Observation end date	2008-02-24T09:35:59	2008-02-24T09:40:50	Subarray requested	NONE	NONE
Read mode	TIMED	TIMED	Alternating exposures requested	N	N
			[s] Primary exposure time	0.000000	3.2

2.3 Aspect



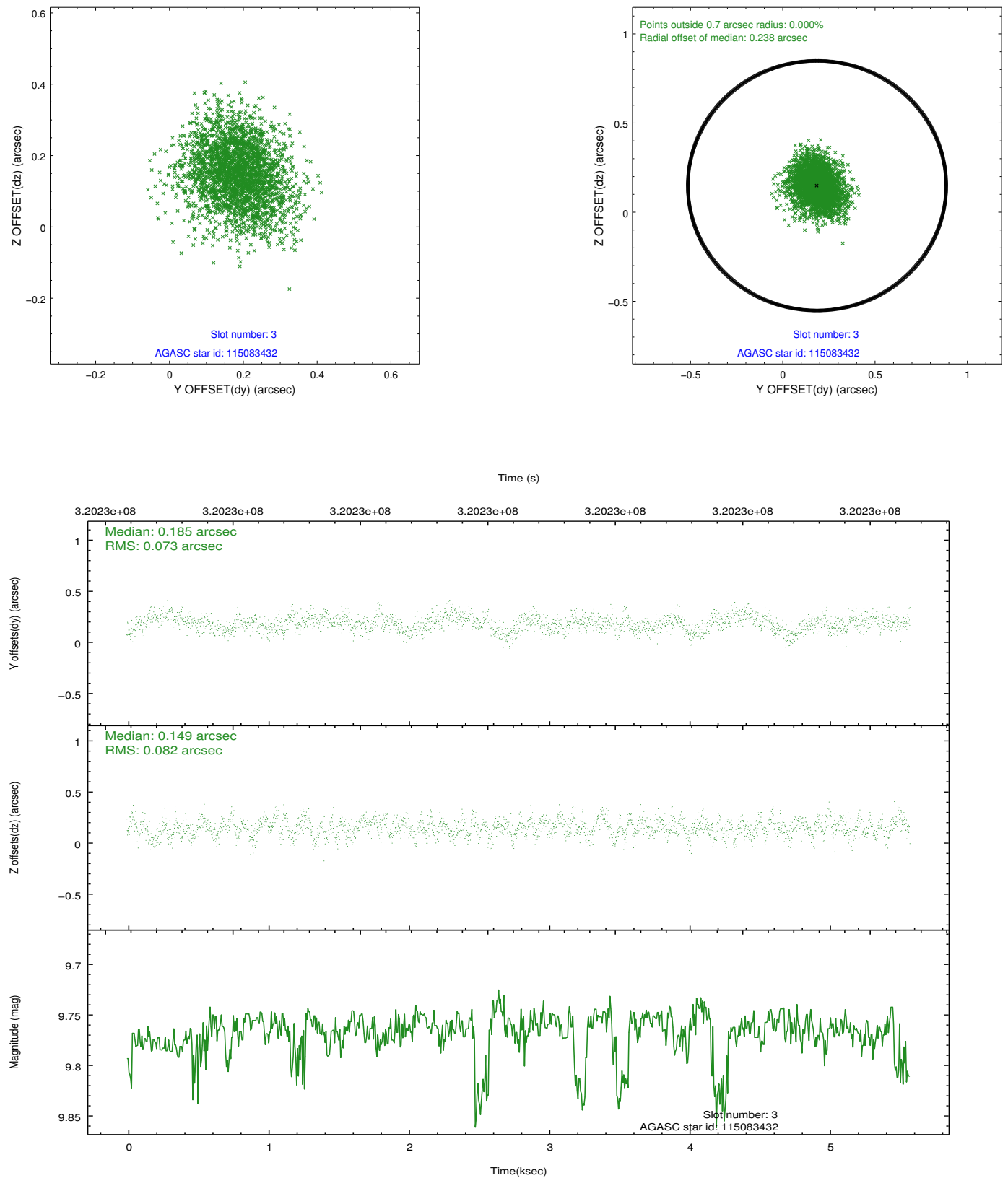


Slot Statistics

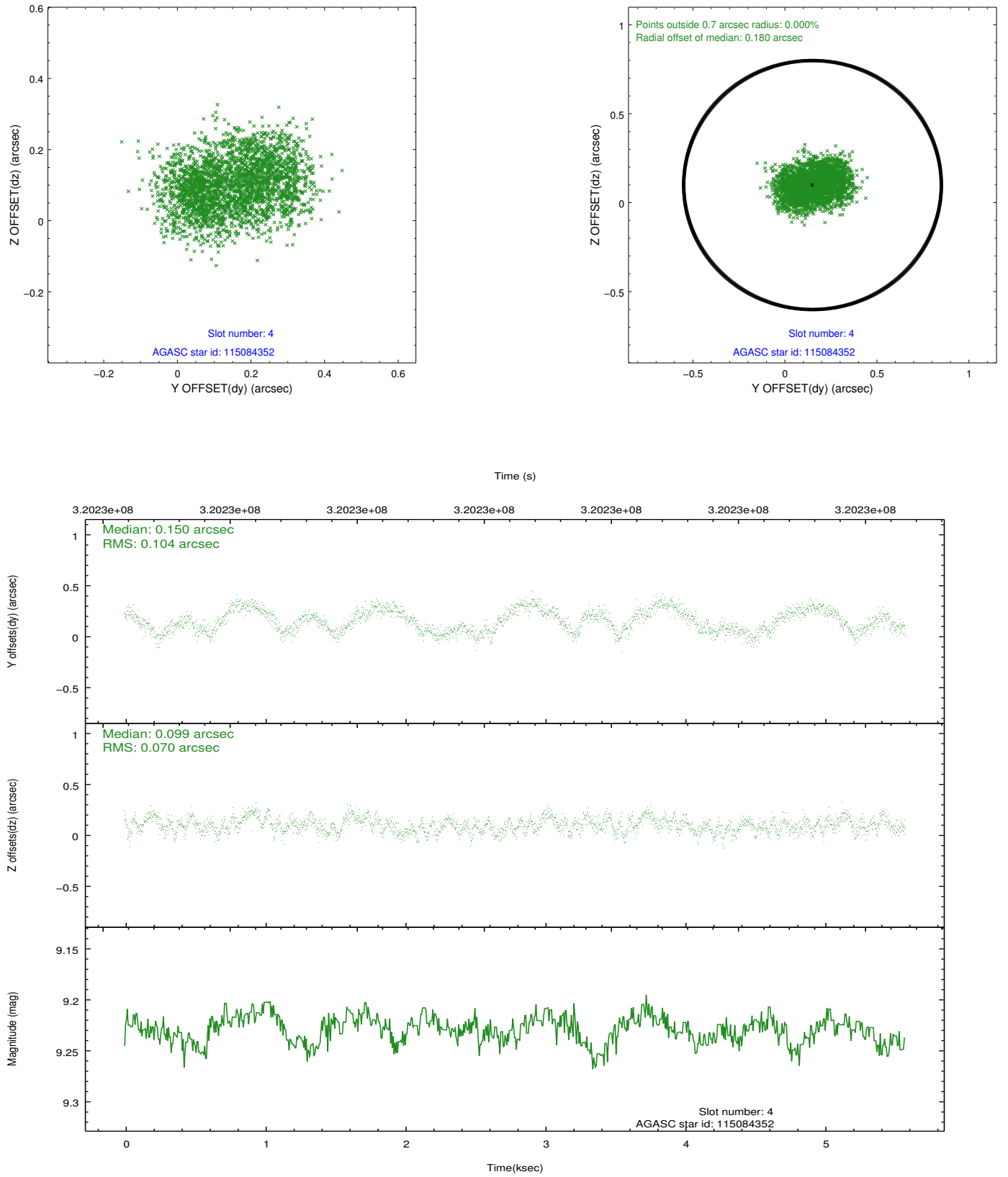
slot	status	id	mag	n_pts	med_dy	med_dz	dr1	dr2	ra	dec	mean_y	mean_z
0	FID	ACIS-S-1	7.19	1361	0.053	-0.008	0.007	0.011	0.000000	0.000000	931.04	-1730.13
1	FID	ACIS-S-2	7.10	1361	-0.111	-0.026	0.006	0.009	0.000000	0.000000	-764.43	-1735.76
2	FID	ACIS-S-4	7.19	1361	0.032	0.040	0.006	0.010	0.000000	0.000000	2147.82	172.94
3	GUIDE	115083432	9.77	2720	0.185	0.149	0.117	0.191	190.888504	12.192141	-155.44	-1624.17
4	GUIDE	115084352	9.23	2723	0.150	0.099	0.137	0.205	190.760225	11.783180	-1622.14	-1151.48
5	GUIDE	115089520	9.65	2722	0.064	-0.140	0.142	0.216	189.892491	12.217562	-8.27	1877.94
6	GUIDE	115477424	9.23	2722	-0.153	0.116	0.083	0.133	190.783230	12.743104	1832.69	-1282.01
7	GUIDE	115482240	7.30	2722	-0.242	-0.227	0.057	0.089	190.182782	12.715426	1766.84	826.46

2.4 Star Slots

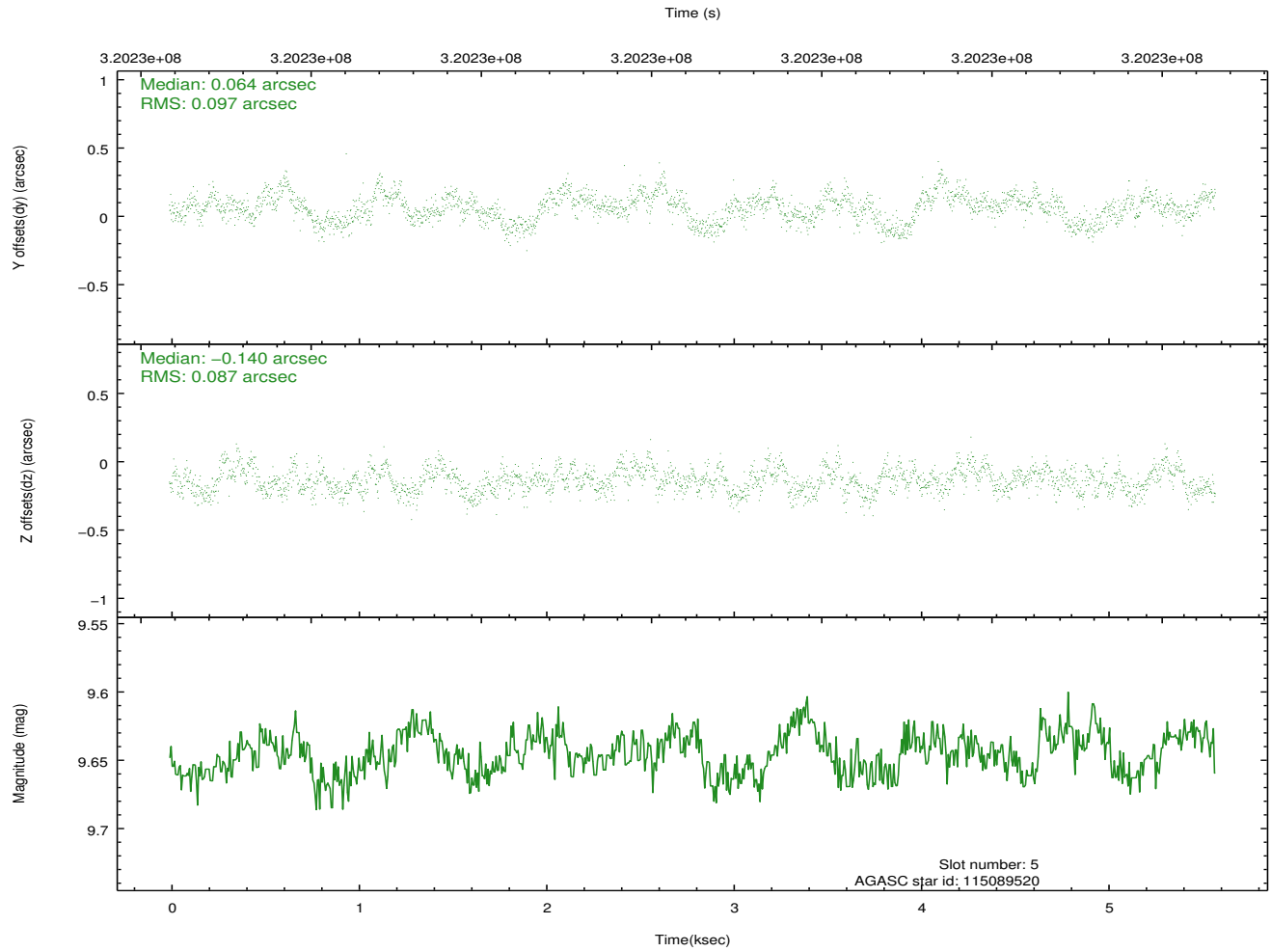
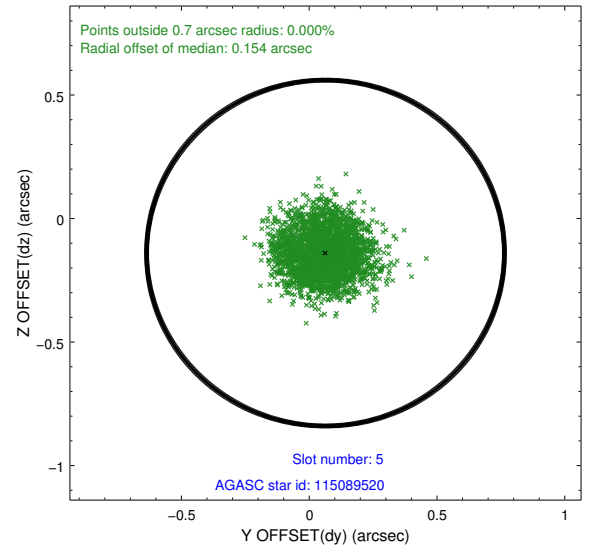
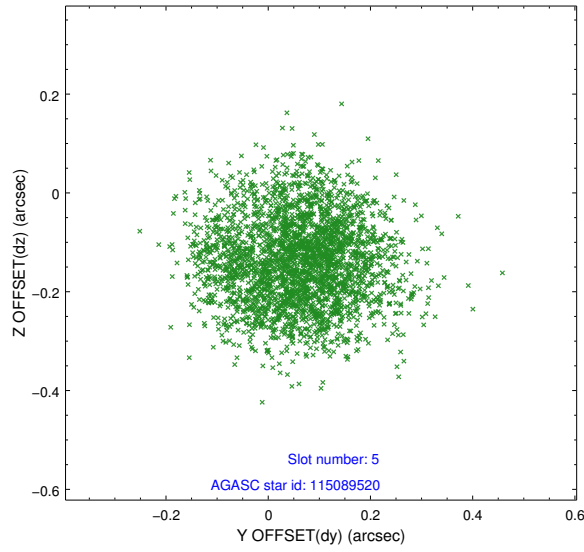
2.4.1 Slot 3



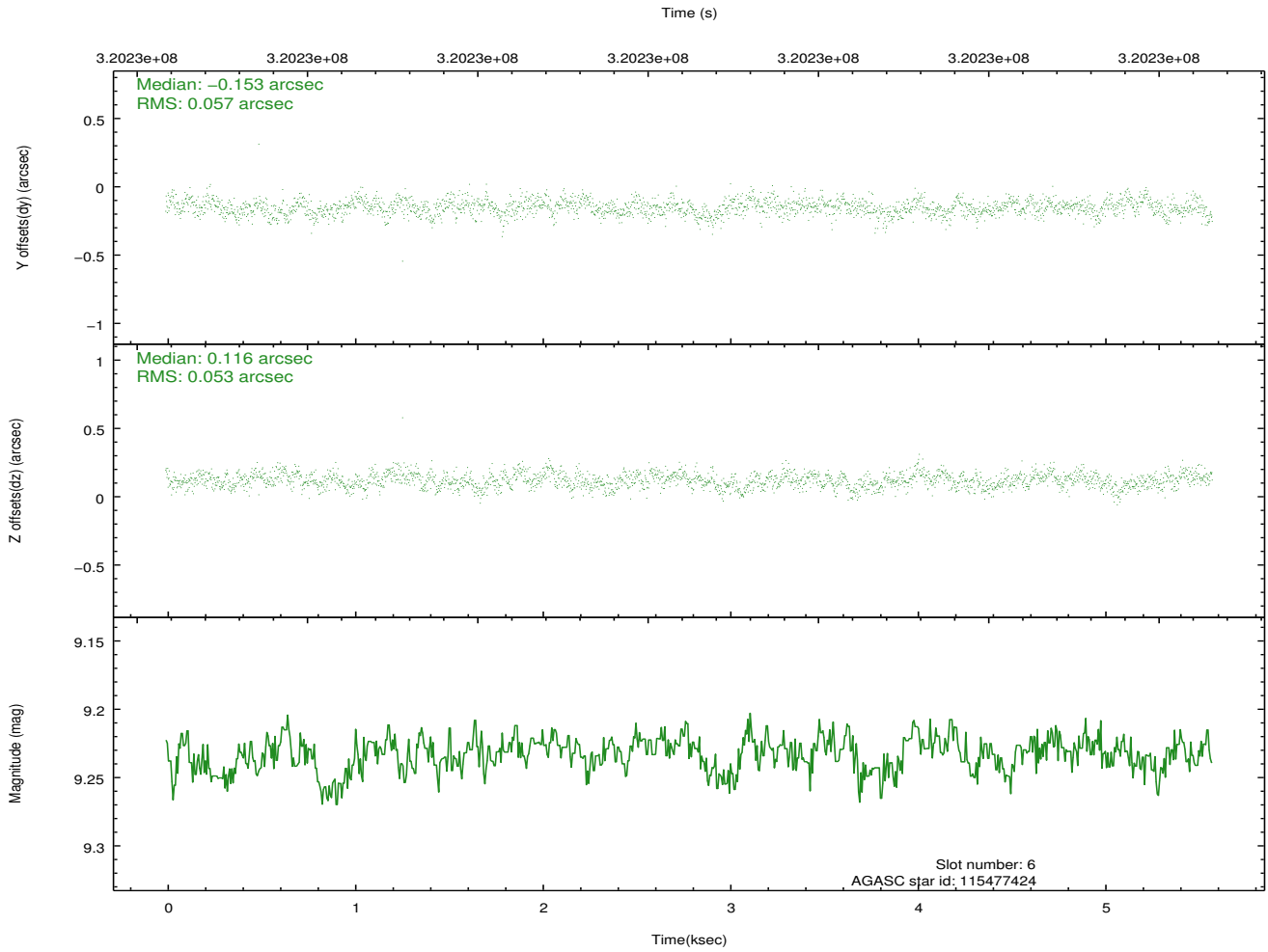
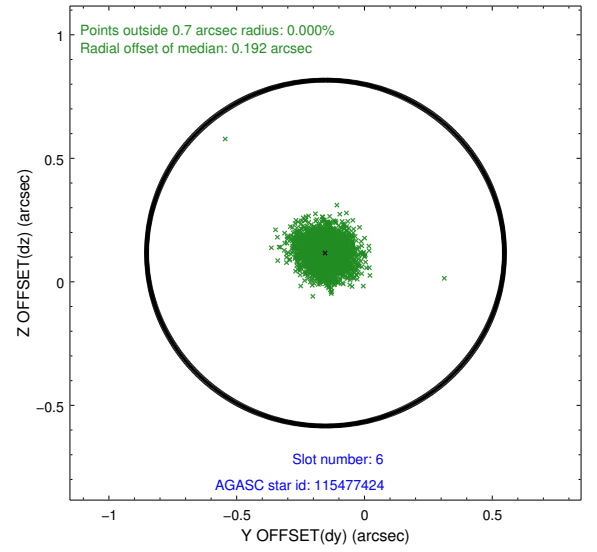
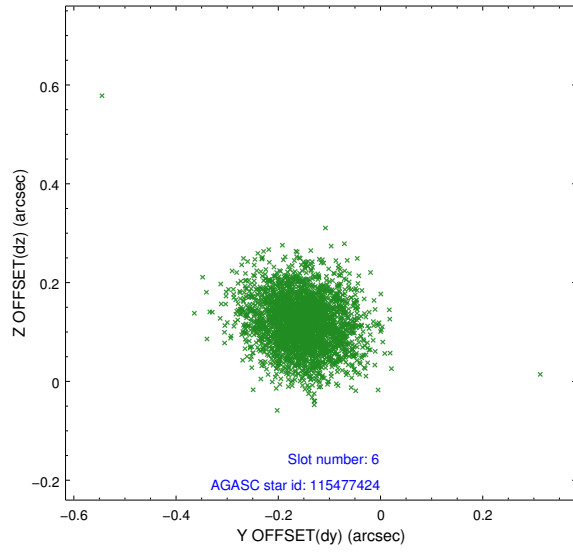
2.4.2 Slot 4



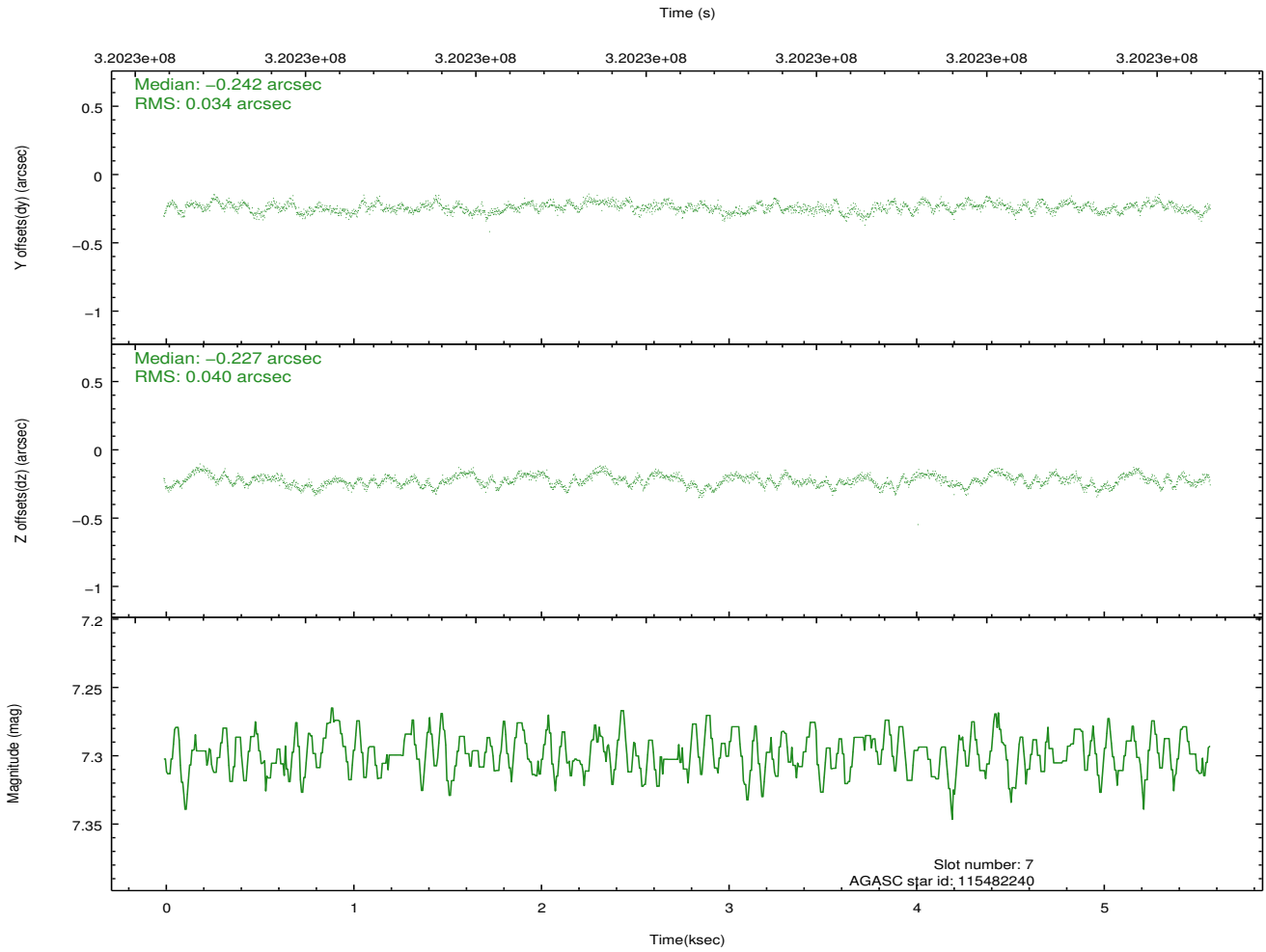
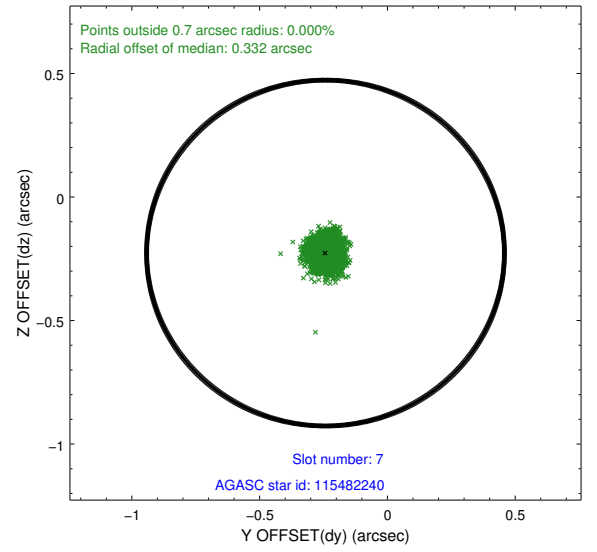
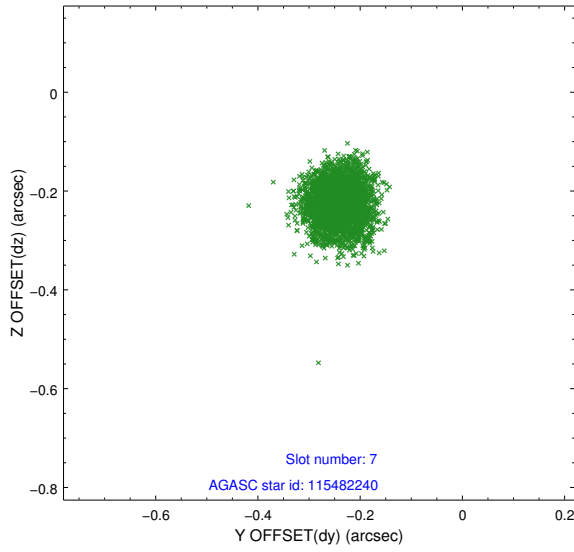
2.4.3 Slot 5



2.4.4 Slot 6

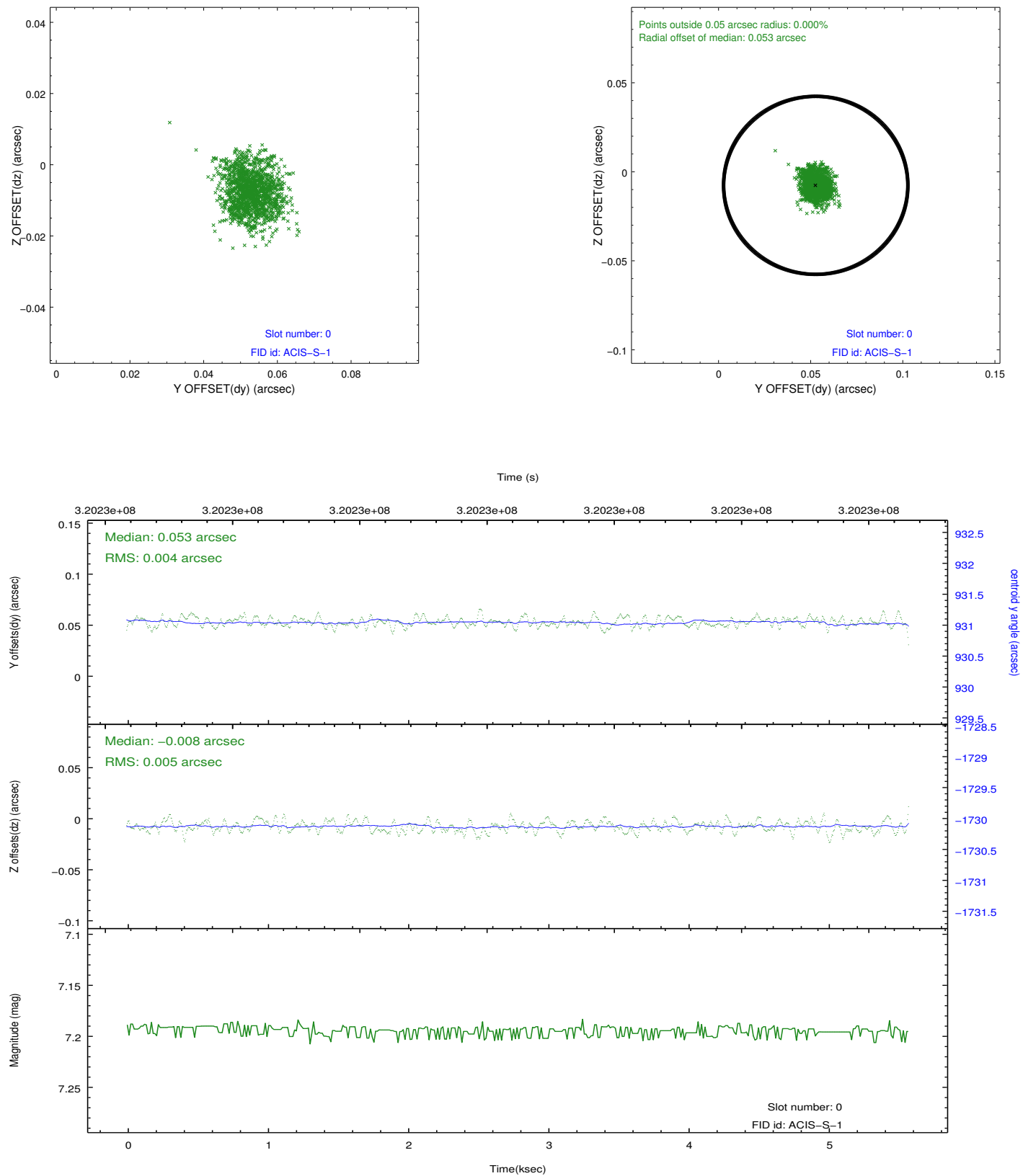


2.4.5 Slot 7

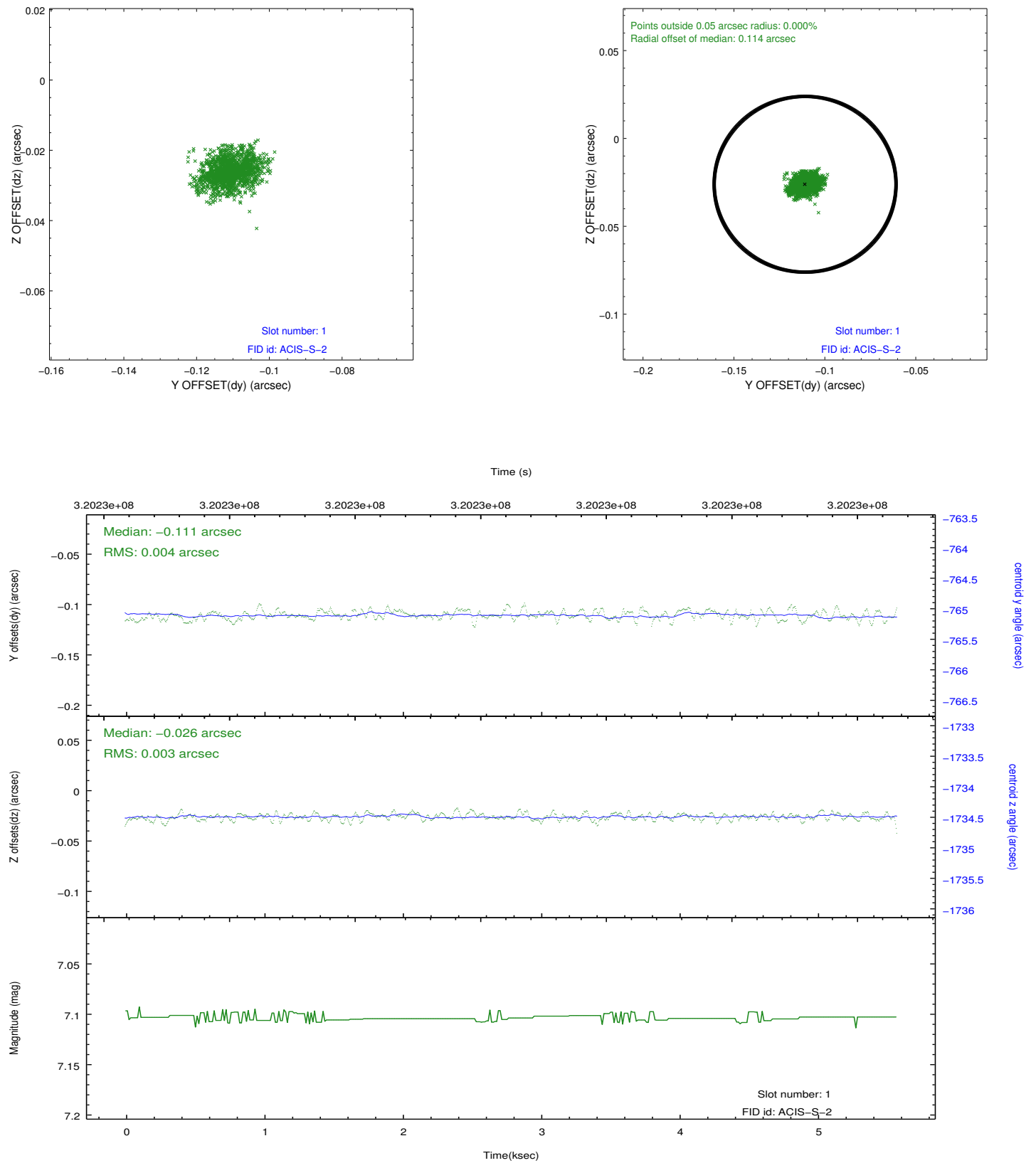


2.5 FID Slots

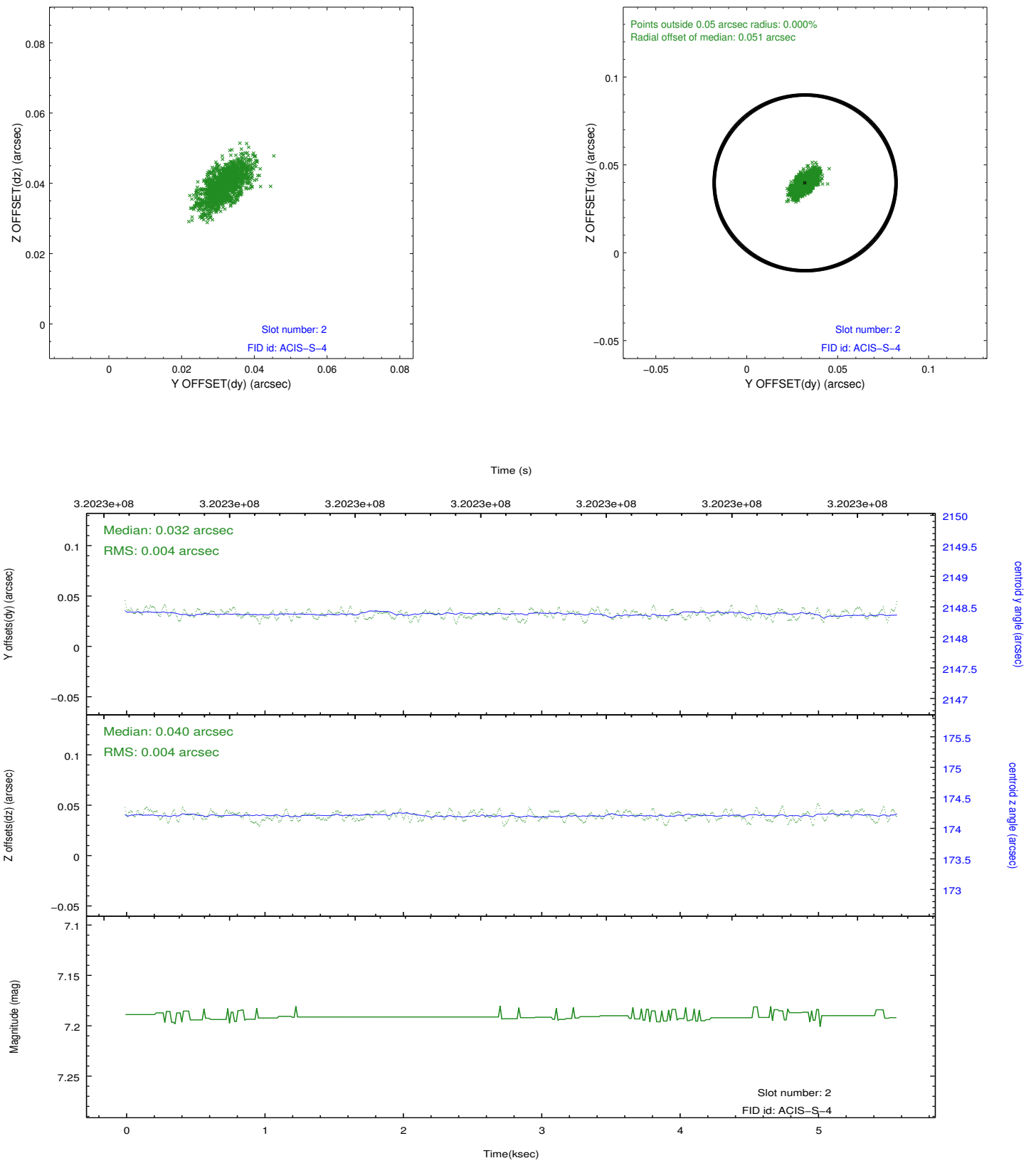
2.5.1 Slot 0



2.5.2 Slot 1



2.5.3 Slot 2



A Summary

A.1 Status

V&V Scientist	Jen Lauer
V&V Date (YYYY-MM-DD)	2012.05.13
V&V Edition	1
V&V Disposition and Status	OK
V&V Charge Time	5.15839998

A.2 Comments

Joint Proposal: Spitzer