

V&V Reference Report

L2 ASCDS Version : 8.4.4

Observation 8096 - L2 Version 2
Chandra X-Ray Center

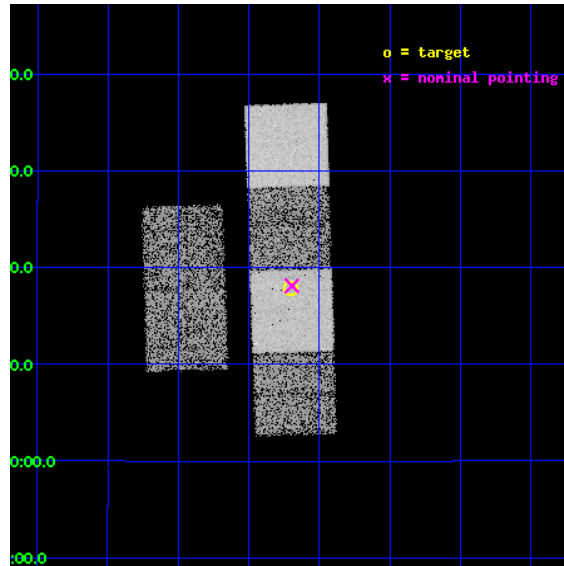
L2 Processing Date : May 10 2012

Contents

1	Front	2
2	OBI	3
2.1	OBI	3
2.1.1	Images	3
2.1.2	Bias	3
2.1.3	Parameters	4
2.1.4	Events	4
2.2	Compared Parameters	5
2.3	Aspect	6
2.4	Star Slots	9
2.4.1	Slot 3	9
2.4.2	Slot 4	10
2.4.3	Slot 5	11
2.4.4	Slot 6	12
2.4.5	Slot 7	13
2.5	FID Slots	14
2.5.1	Slot 0	14
2.5.2	Slot 1	15
2.5.3	Slot 2	16
A	Summary	17
A.1	Status	17
A.2	Comments	17

1 Front

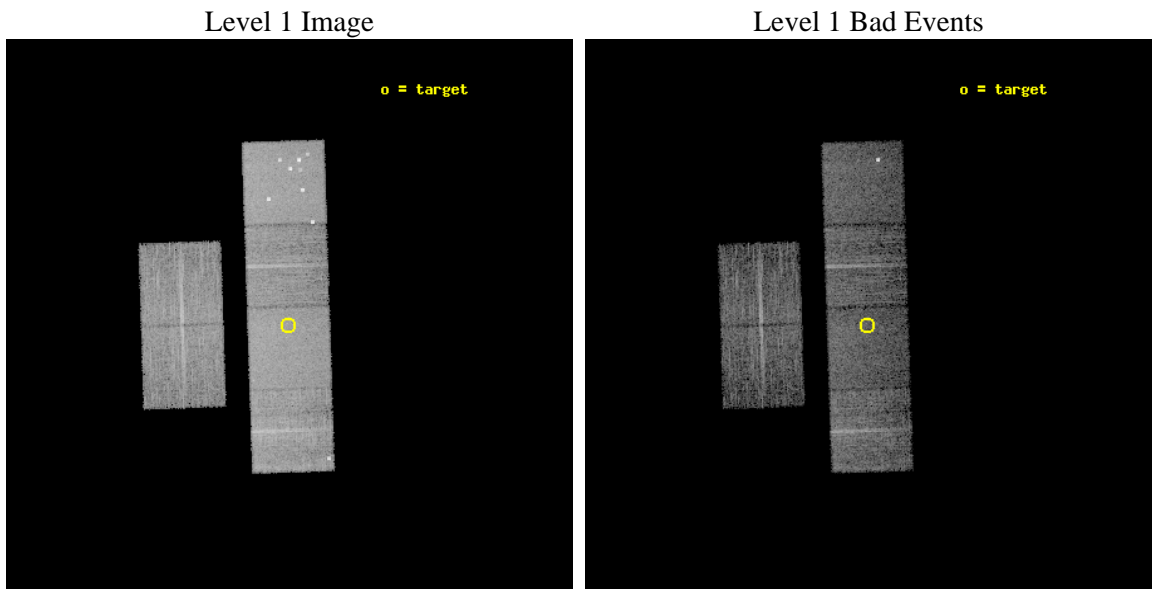
seq_num	900637	Sequence number
obs_id	8096	Observation id
title	The Duty Cycle of Supermassive Black Holes: X-raying Virgo	Proposa
observer	Prof Tommaso Treu	Principal investigator
object	1075	Source name
dtcycle	0	
cycle	P	events from which exps? Prim/Second/Both
ra_targ	187.05125	Observer's specified target RA [deg]
dec_targ	10.2975	Observer's specified target Dec [deg]
ra_nom	187.04875894739	Nominal RA [deg]
dec_nom	10.30180481704	Nominal Dec [deg]
roll_nom	88.144140682307	Nominal Roll [deg]
revision	2	Processing version of data
ontime	5158.1841789484	Sum of GTIs [s]
livetime	5092.8681449889	Livetime [s]
ontime2	5158.2252189517	Sum of GTIs [s]
ontime3	5158.0610589385	Sum of GTIs [s]
ontime5	5158.1431389451	Sum of GTIs [s]
ontime6	5158.1020989418	Sum of GTIs [s]
ontime7	5158.1841789484	Sum of GTIs [s]
ontime8	5154.778979063	Sum of GTIs [s]
l2events	82721	Number of level 2 events



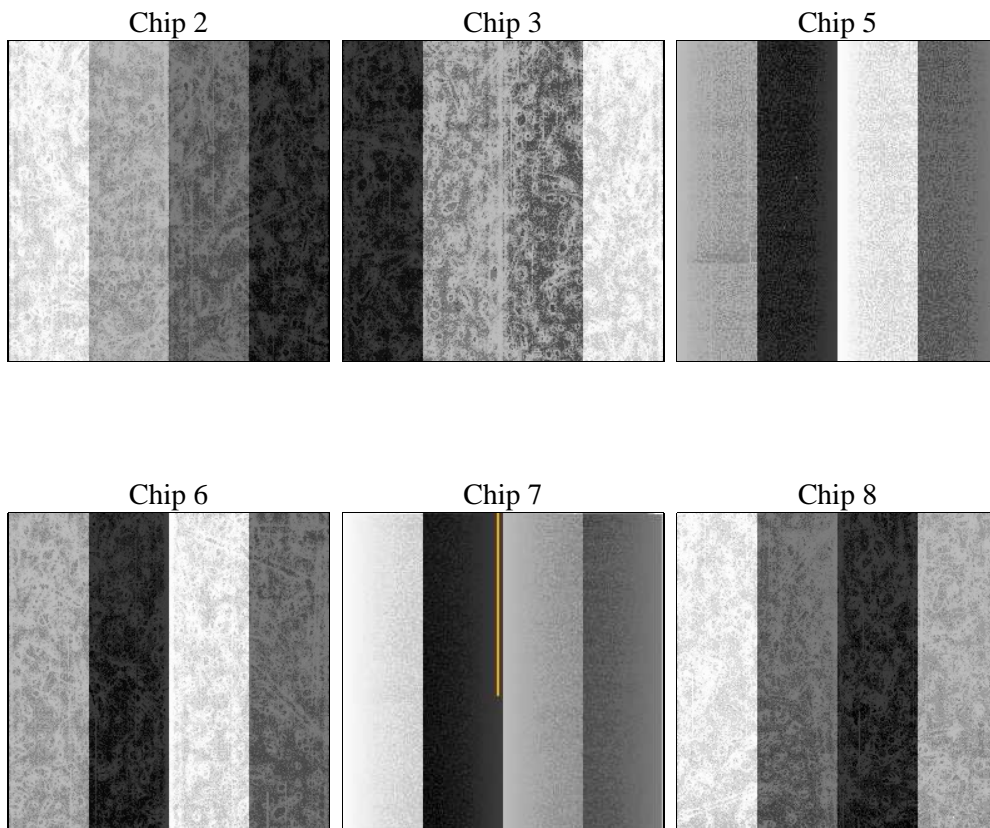
2 OBI

2.1 OBI

2.1.1 Images



2.1.2 Bias



2.1.3 Parameters

obi_num	1	Obi number	sched_exp_time	5400.000000	[s] Scheduled observation exposure time
ascdsver	8.4.4	Processing system revision	ontime	5158.1841789484	Sum of GTIs [s]
caldsver	4.4.9	 	ontime2	5158.2252189517	Sum of GTIs [s]
date	2012-05-10T08:36:46	Date and time of file creation	ontime3	5158.0610589385	Sum of GTIs [s]
revision	2	Processing version of data	ontime5	5158.1431389451	Sum of GTIs [s]
			ontime6	5158.1020989418	Sum of GTIs [s]
			ontime7	5158.1841789484	Sum of GTIs [s]
			ontime8	5154.778979063	Sum of GTIs [s]
			l1events	378576	Number of level 1 events

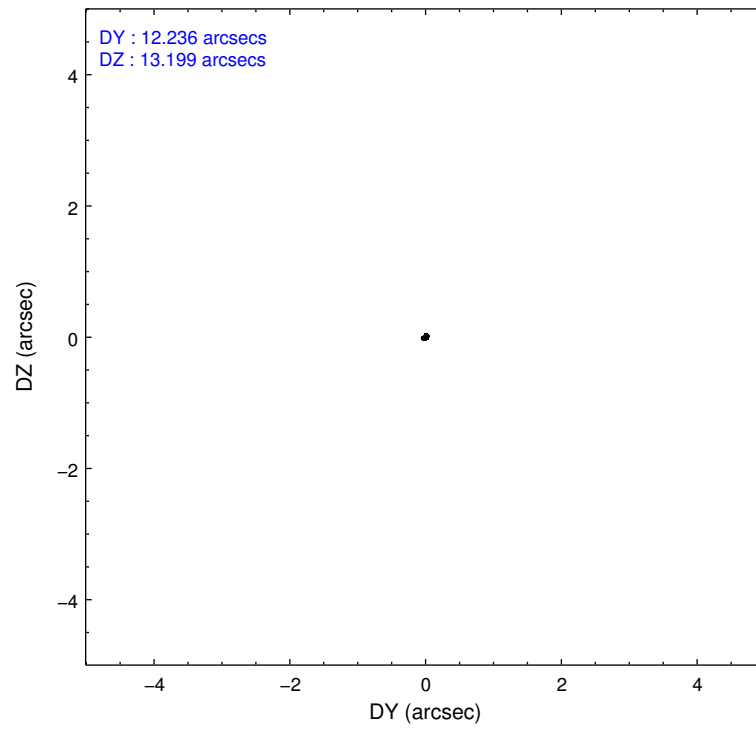
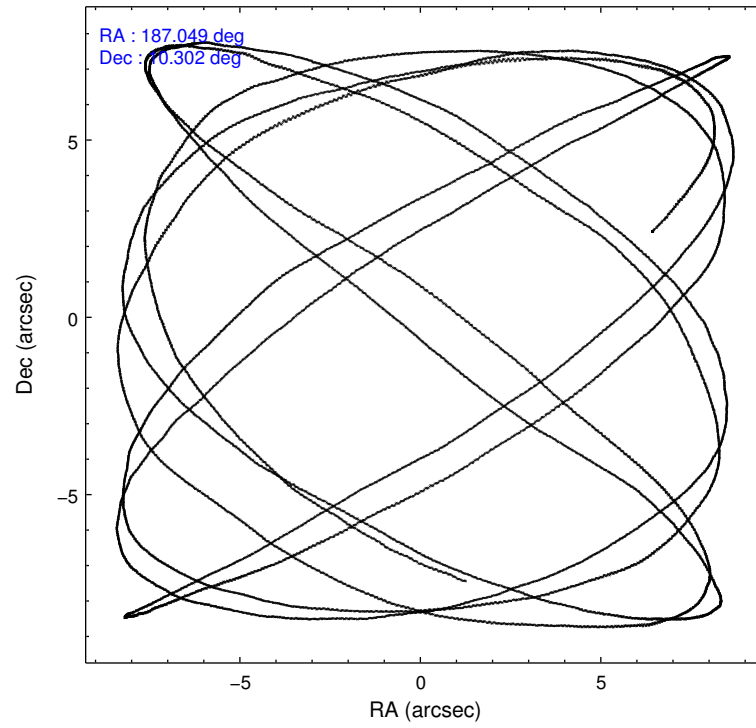
2.1.4 Events

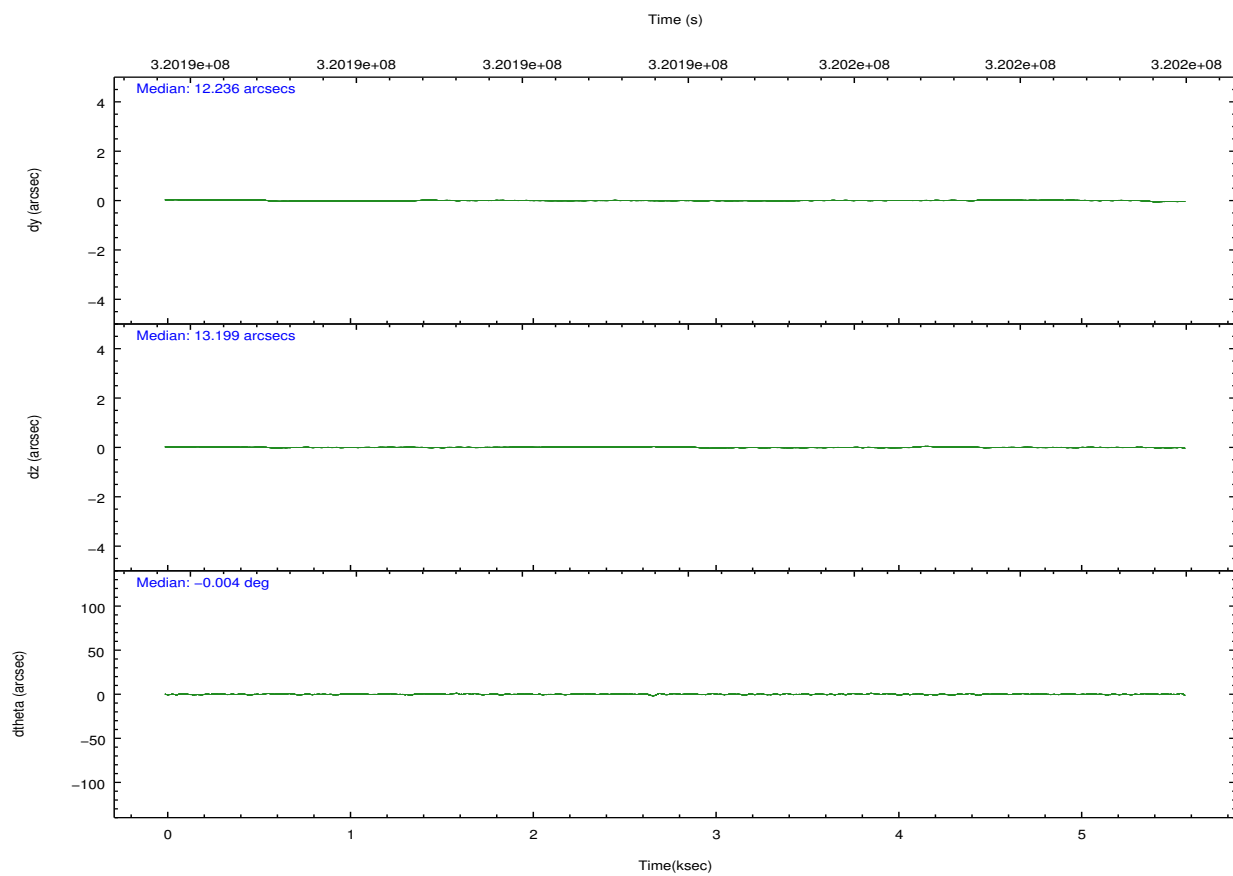
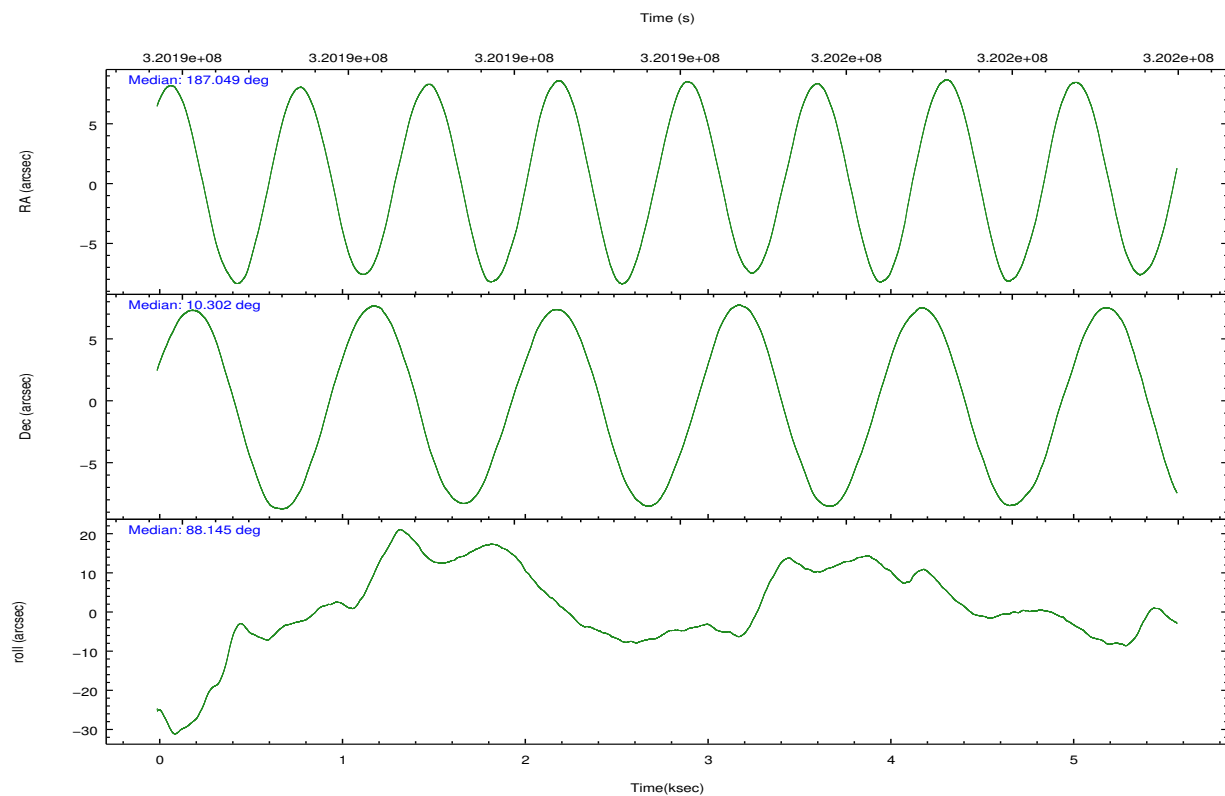
	ccd 2	ccd 3	ccd 5	ccd 6	ccd 7	ccd 8		ccd 2	ccd 3	ccd 5	ccd 6	ccd 7	ccd 8
level 1 events	53094	48622	85327	51341	70494	69698	grade 0 events	2410	2682	7365	2464	2556	5515
rejected events	47281	42645	43334	45170	41545	54498		4%	5%	8%	4%	3%	7%
rejected %	89%	87%	50%	87%	58%	78%	grade 1 events	42	38	93	21	70	63
								0%	0%	0%	0%	0%	0%
							grade 2 events	1259	1177	11531	1392	5951	3209
								2%	2%	13%	2%	8%	4%
							grade 3 events	534	558	1304	556	2443	1331
								1%	1%	1%	1%	3%	1%
							grade 4 events	543	528	1264	519	2399	1330
								1%	1%	1%	1%	3%	1%
							grade 5 events	1975	2252	5177	2414	6492	3032
								3%	4%	6%	4%	9%	4%
							grade 6 events	1070	1038	20556	1246	15616	3850
								2%	2%	24%	2%	22%	5%
							grade 7 events	45261	40349	38037	42729	34967	51368
								85%	82%	44%	83%	49%	73%

2.2 Compared Parameters

Parameter	Planned	Actual	Parameter	Planned	Actual
Instrument	ACIS	ACIS	Obspar format version number	7	7
Detector	ACIS-235678	ACIS-235678	Obspar file type	PREDICTED	ACTUAL
Grating	NONE	NONE	Obspar update status	NONE	UPDATED
Data mode	FAINT	FAINT	CCD I0 on	N	N
Observation mode	POINTING	POINTING	CCD I1 on	N	N
[deg] Pointing RA	187.062235	187.048758947391	CCD I2 on	O1	Y
[deg] Pointing Dec	10.277772	10.30180481703977	CCD I3 on	O2	Y
[deg] Pointing Roll	87.985096	88.14414068230681	CCD S0 on	N	N
[mm] SIM focus pos	-0.684267	-0.6828225247311905	CCD S1 on	O3	Y
[mm] SIM defocus	0	0.001444936568705701	CCD S2 on	Y	Y
[mm] SIM translation stage pos	-190.132523	-190.1400660498719	CCD S3 on	Y	Y
[mm] SIM translation stage offset	0	0.00754346686406393	CCD S4 on	O4	Y
[s] Observation start time (MET)	320191302.184000	320190822.12876	CCD S5 on	N	N
Observation start date	2008-02-23T22:00:37	2008-02-23T21:53:42	Number of optional ACIS chips dropped	0	0
[s] Observation end time (MET)	320196702.184000	320196921.90406	On-chip summing requested	N	N
Observation end date	2008-02-23T23:30:37	2008-02-23T23:35:21	Subarray requested	NONE	NONE
Read mode	TIMED	TIMED	Alternating exposures requested	N	N
			[s] Primary exposure time	0.000000	3.2

2.3 Aspect



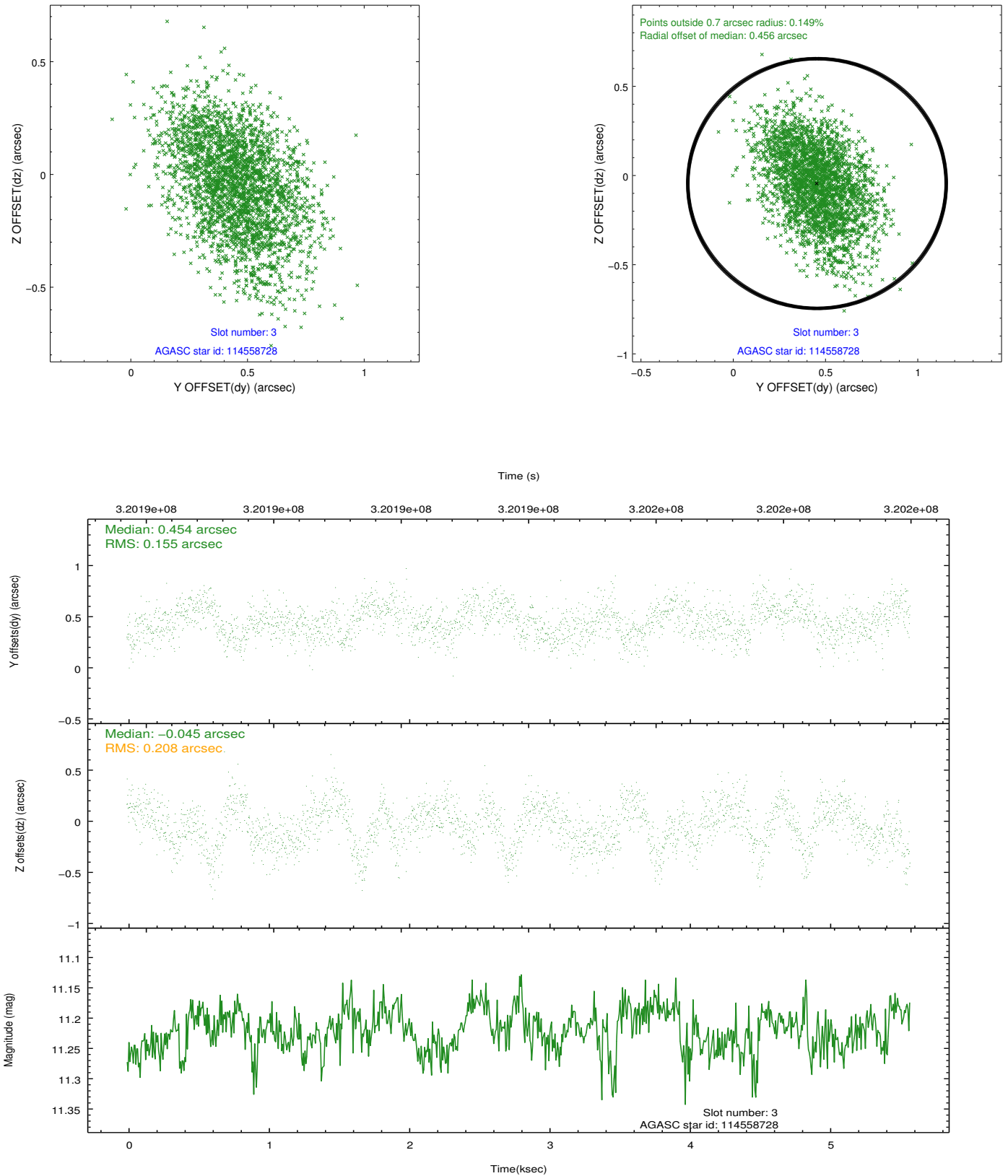


Slot Statistics

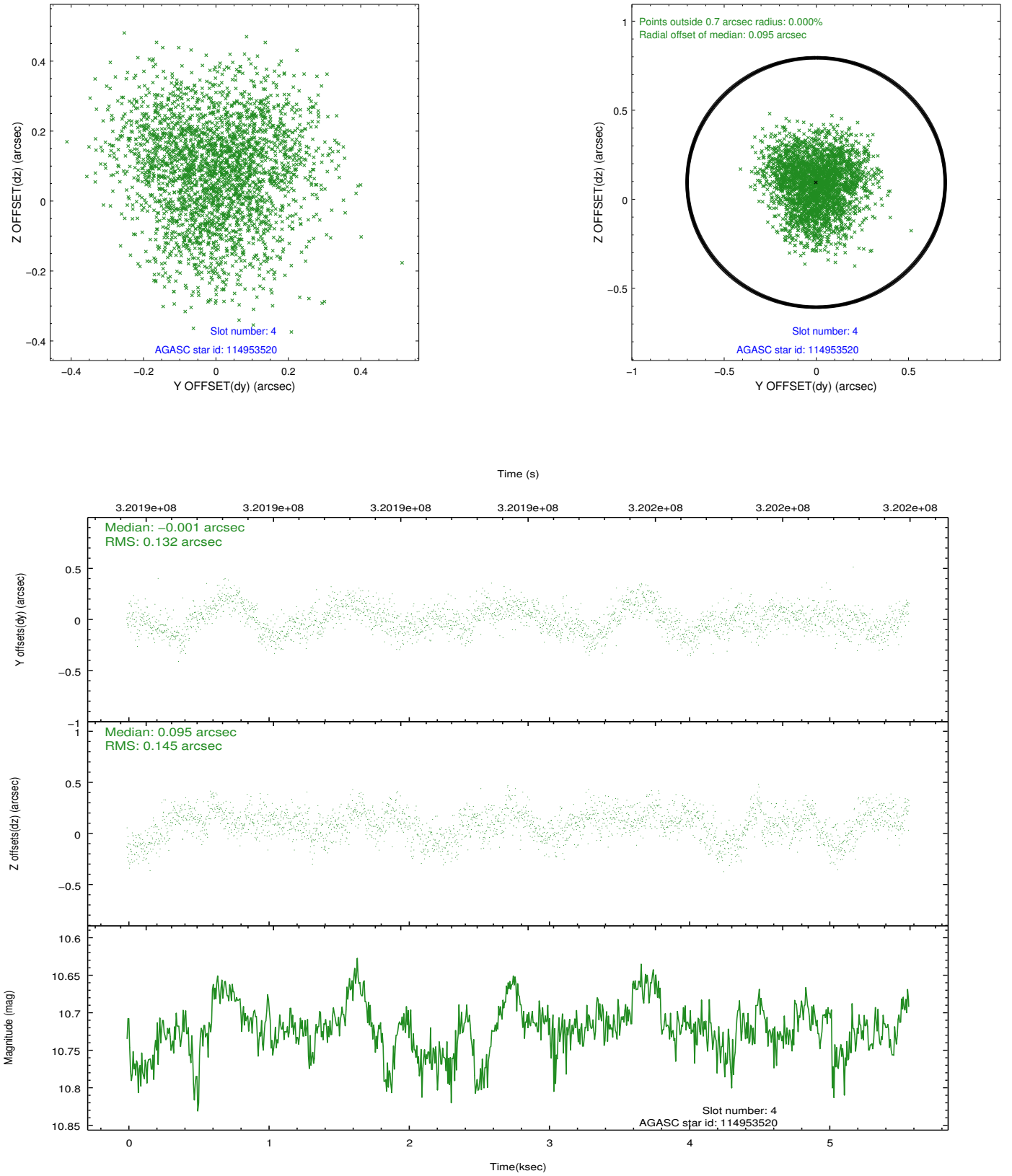
slot	status	id	mag	n_pts	med_dy	med_dz	dr1	dr2	ra	dec	mean_y	mean_z
0	FID	ACIS-S-2	7.10	1361	-0.022	-0.051	0.007	0.012	0.000000	0.000000	-765.16	-1734.58
1	FID	ACIS-S-4	7.20	1361	0.117	0.024	0.005	0.010	0.000000	0.000000	2147.77	172.85
2	FID	ACIS-S-5	7.24	1361	-0.127	0.035	0.007	0.011	0.000000	0.000000	-1816.72	167.77
3	GUIDE	114558728	11.22	2679	0.454	-0.045	0.274	0.458	186.457680	9.762801	-1926.46	2078.40
4	GUIDE	114953520	10.72	2713	-0.001	0.095	0.213	0.335	186.536180	10.250141	-164.48	1859.79
5	GUIDE	114955704	10.32	2716	-0.196	0.052	0.173	0.284	186.906693	10.926722	2315.11	632.41
6	GUIDE	114957648	9.56	2719	-0.168	-0.038	0.146	0.221	186.459555	10.641928	1237.23	2178.80
7	GUIDE	114429600	7.40	2722	-0.077	-0.048	0.106	0.180	186.379936	9.751764	-1975.29	2353.90

2.4 Star Slots

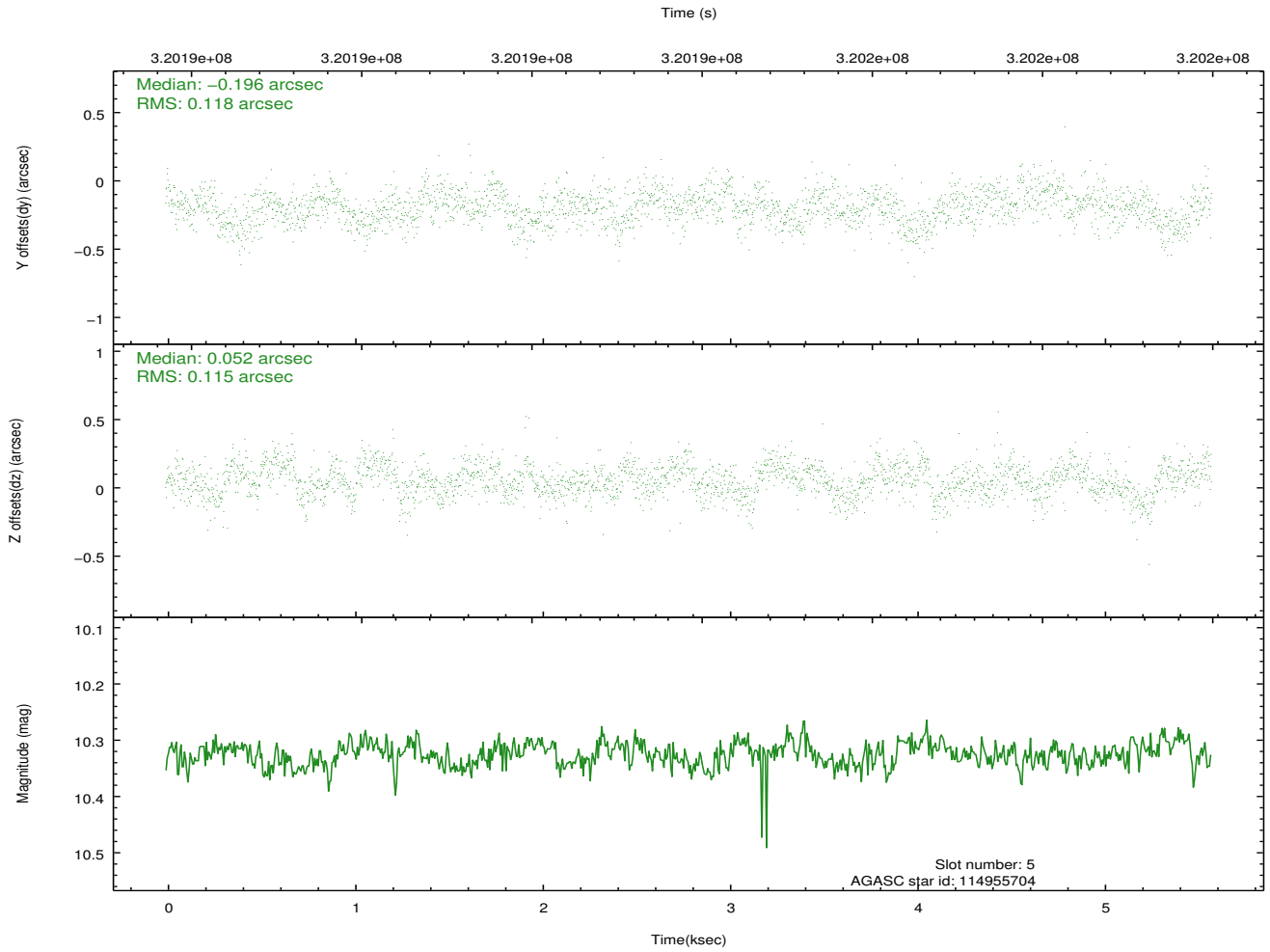
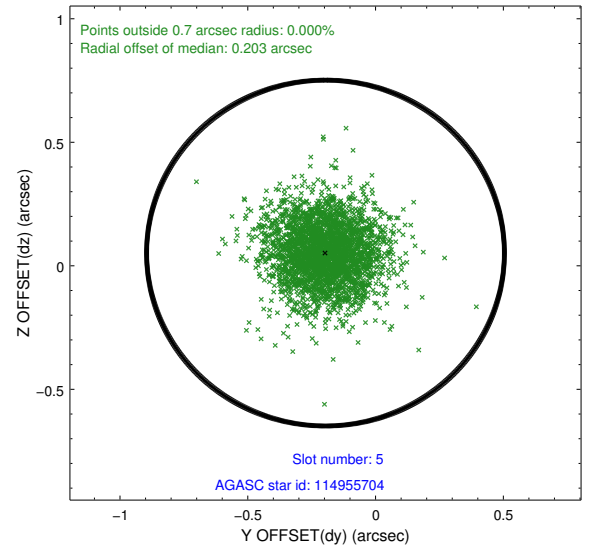
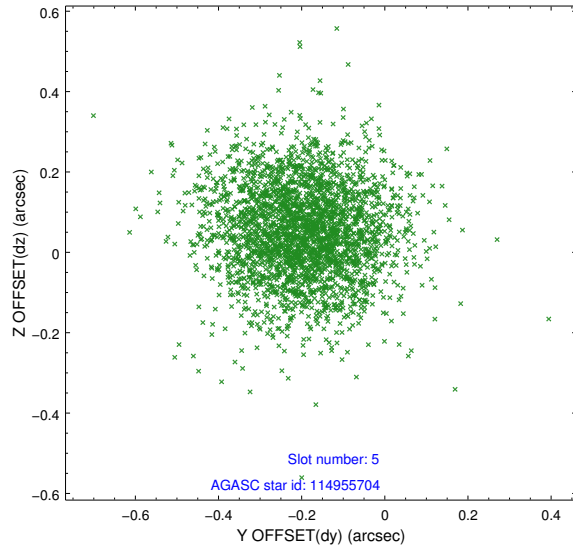
2.4.1 Slot 3



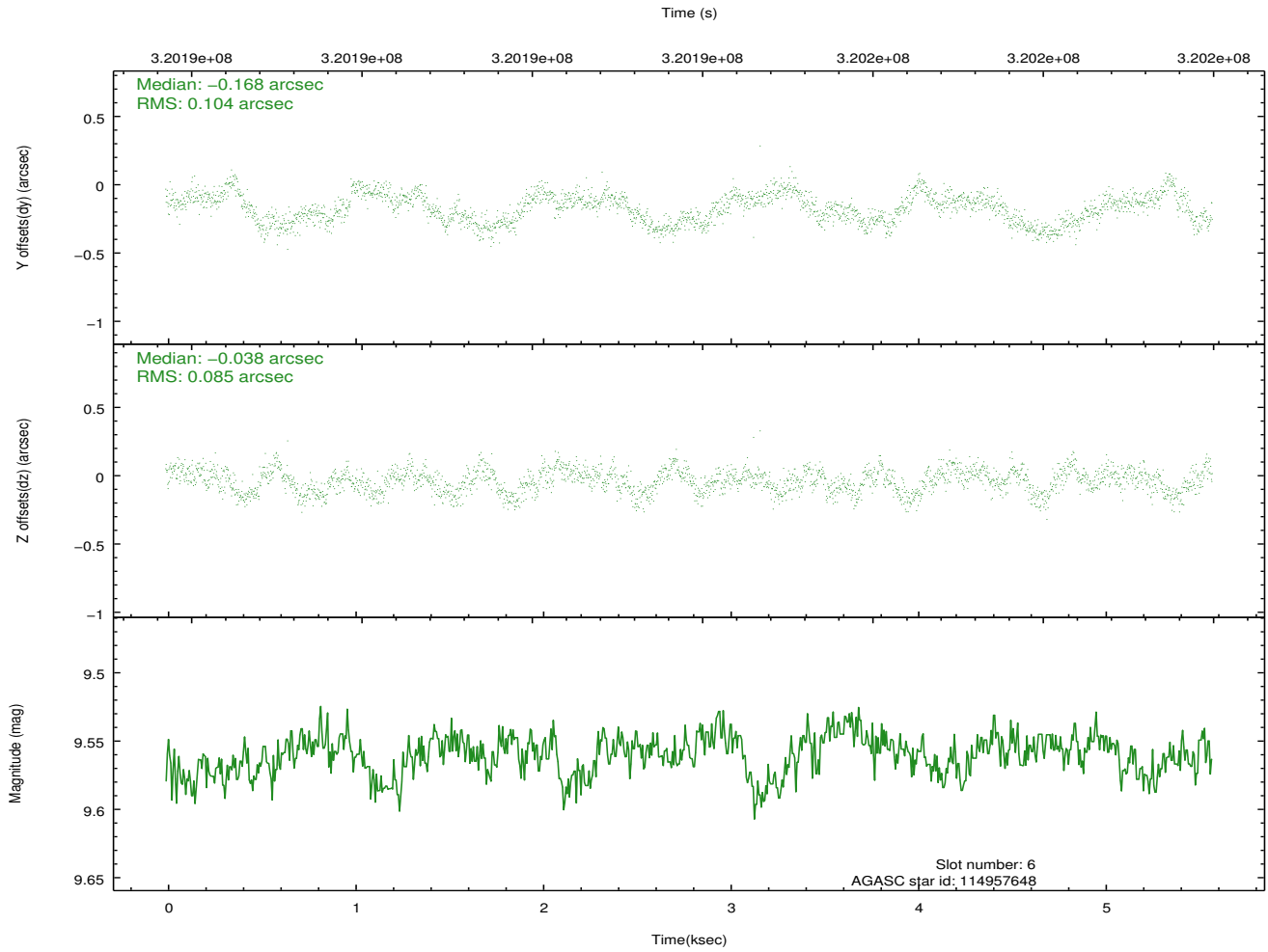
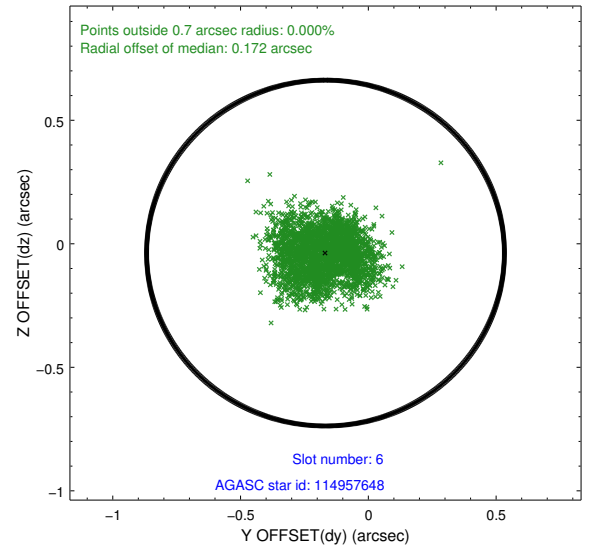
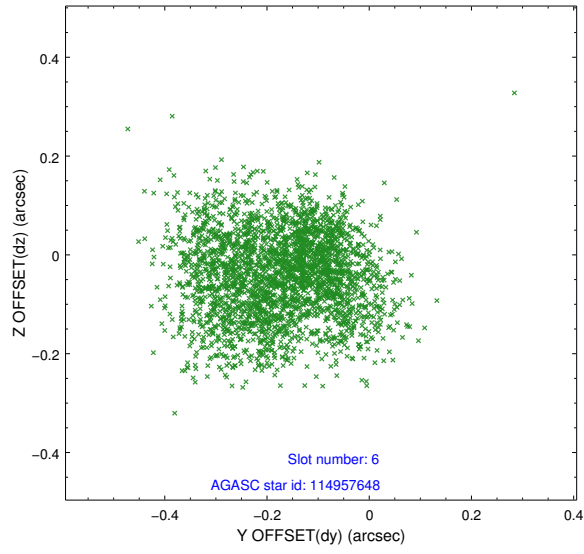
2.4.2 Slot 4



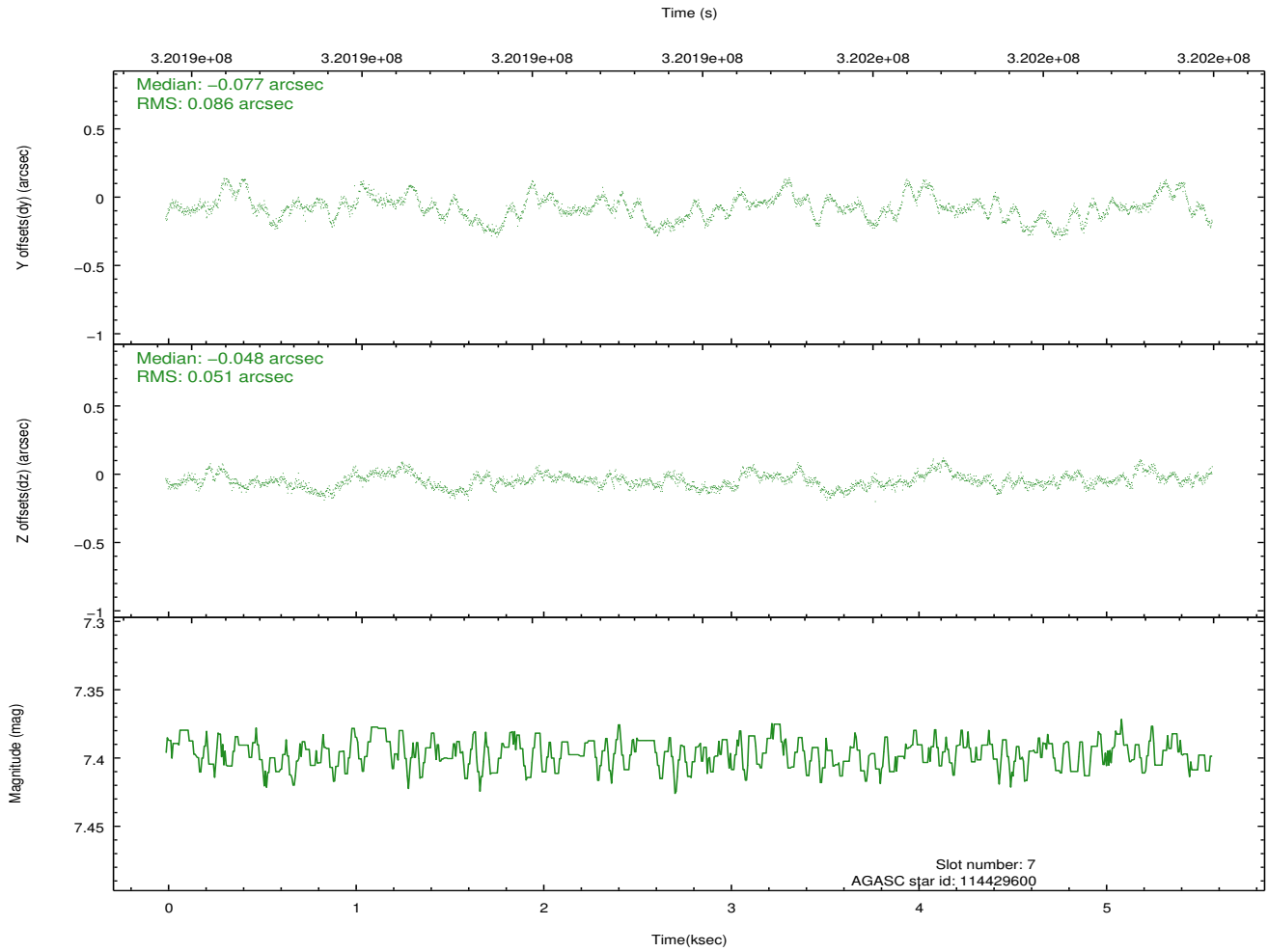
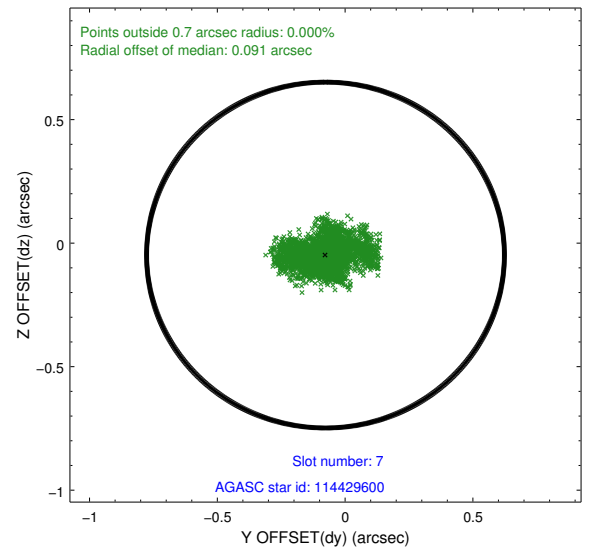
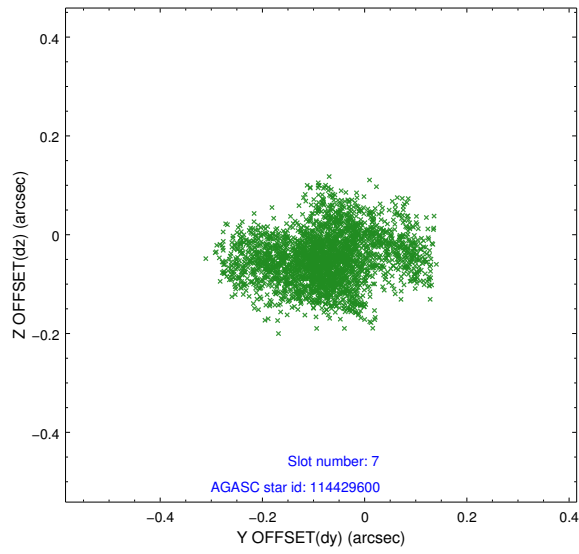
2.4.3 Slot 5



2.4.4 Slot 6

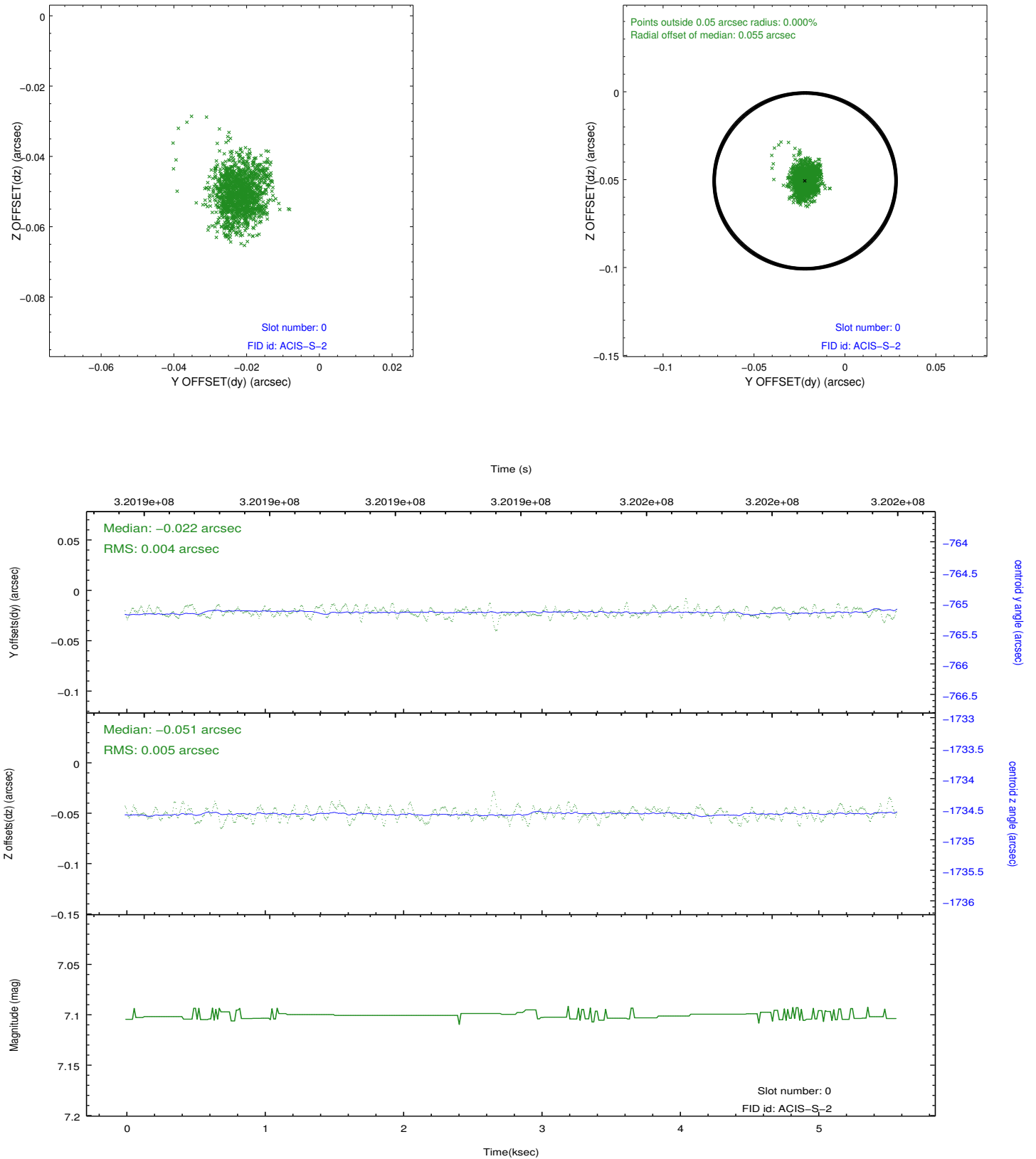


2.4.5 Slot 7

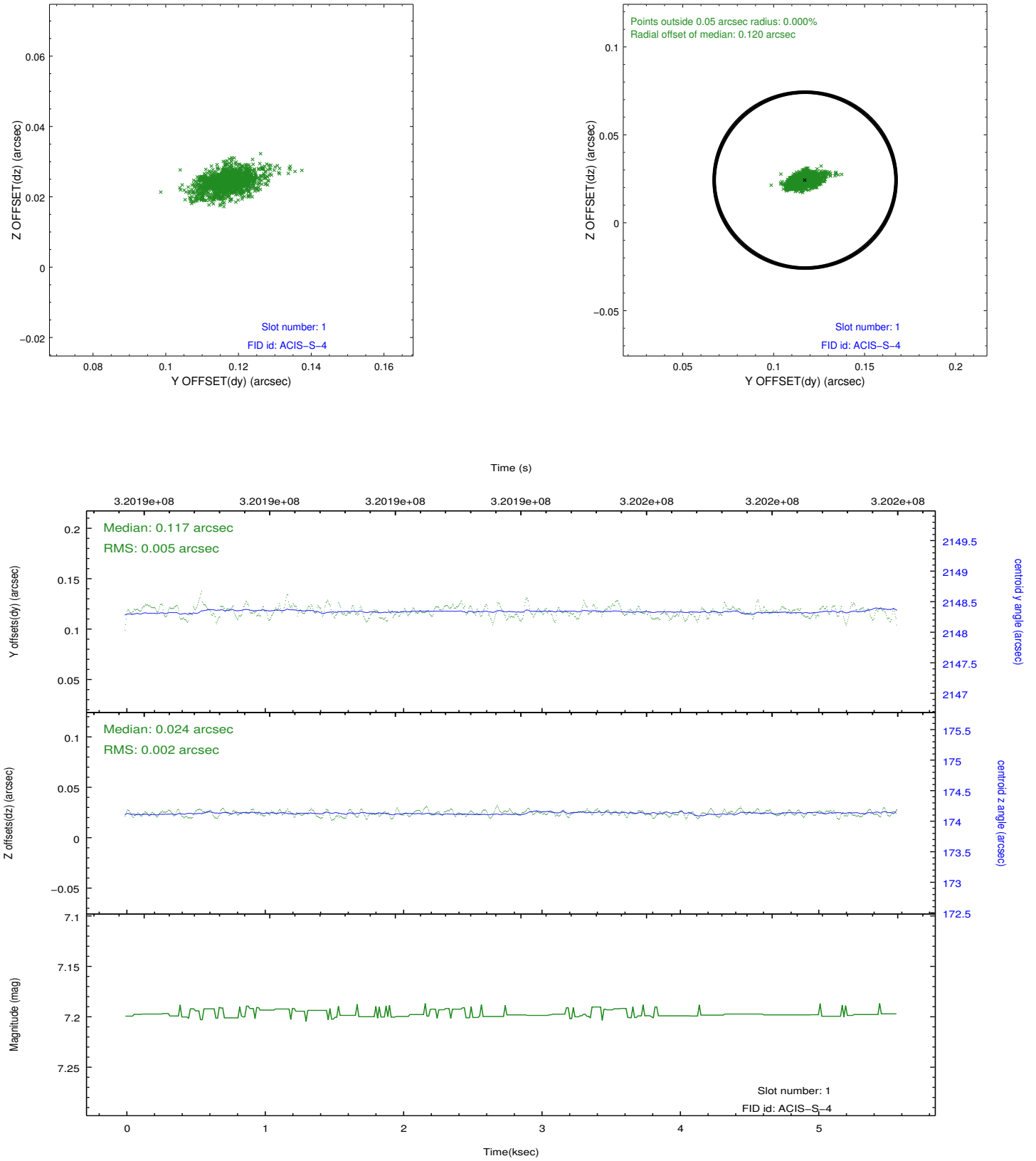


2.5 FID Slots

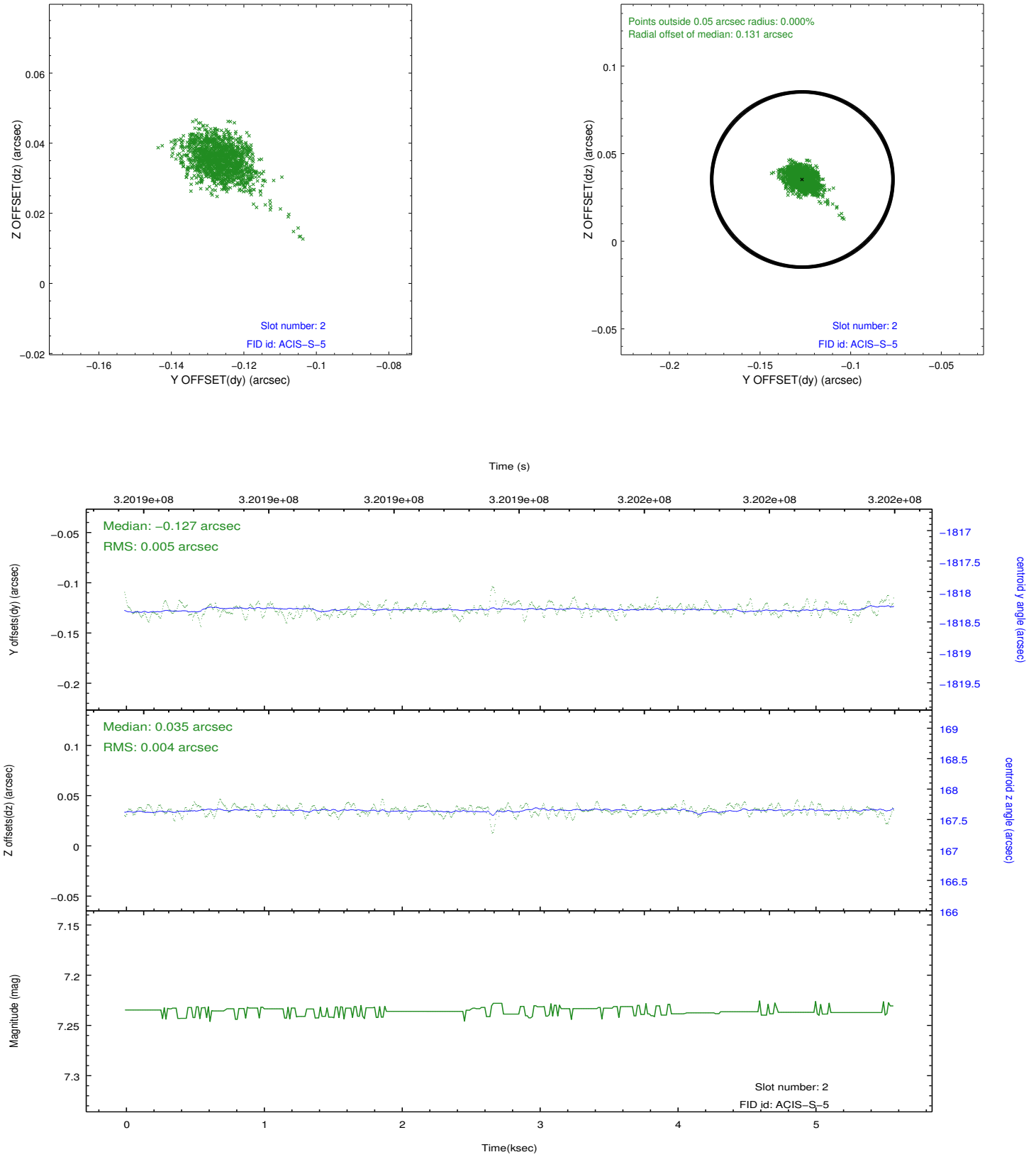
2.5.1 Slot 0



2.5.2 Slot 1



2.5.3 Slot 2



A Summary

A.1 Status

V&V Scientist	Jen Lauer
V&V Date (YYYY-MM-DD)	2012.05.13
V&V Edition	1
V&V Disposition and Status	OK
V&V Charge Time	5.15839998

A.2 Comments

Joint Proposal: Spitzer