

V&V Reference Report

L2 ASCDS Version : 8.4.4

Observation 8063 - L2 Version 2
Chandra X-Ray Center

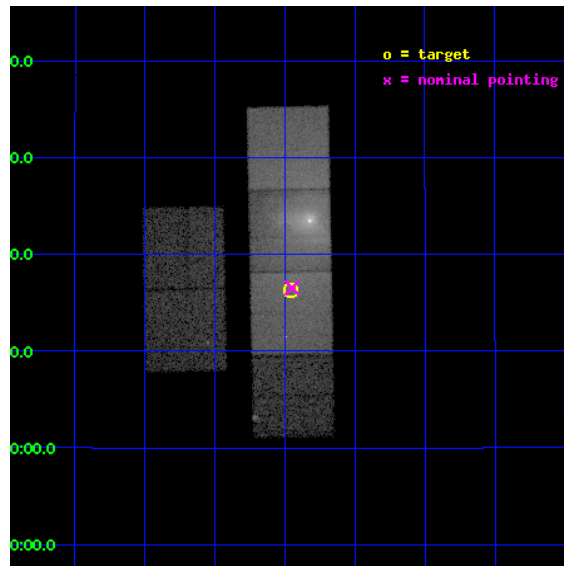
L2 Processing Date : May 10 2012

Contents

1	Front	2
2	OBI	3
2.1	OBI	3
2.1.1	Images	3
2.1.2	Bias	3
2.1.3	Parameters	4
2.1.4	Events	4
2.2	Compared Parameters	5
2.3	Aspect	6
2.4	Star Slots	9
2.4.1	Slot 3	9
2.4.2	Slot 4	10
2.4.3	Slot 5	11
2.4.4	Slot 6	12
2.4.5	Slot 7	13
2.5	FID Slots	14
2.5.1	Slot 0	14
2.5.2	Slot 1	15
2.5.3	Slot 2	16
A	Summary	17
A.1	Status	17
A.2	Comments	17

1 Front

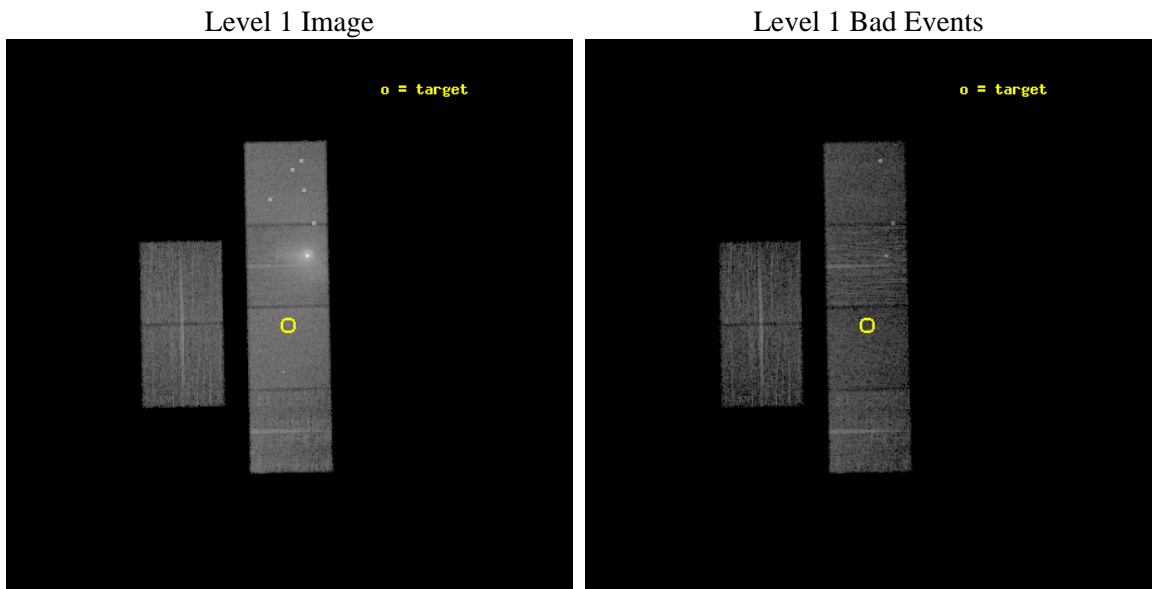
seq_num	900604	Sequence number
obs_id	8063	Observation id
title	The Duty Cycle of Supermassive Black Holes: X-raying Virgo	Proposa
observer	Prof Tommaso Treu	Principal investigator
object	1327	Source name
dtcycle	0	
cycle	P	events from which exps? Prim/Second/Both
ra_targ	187.74	Observer's specified target RA [deg]
dec_targ	12.271444	Observer's specified target Dec [deg]
ra_nom	187.73745651531	Nominal RA [deg]
dec_nom	12.275717528104	Nominal Dec [deg]
roll_nom	88.885556819402	Nominal Roll [deg]
revision	2	Processing version of data
ontime	5157.0425536633	Sum of GTIs [s]
livetime	5091.7409756505	Livetime [s]
ontime2	5157.0835936666	Sum of GTIs [s]
ontime3	5156.9194336534	Sum of GTIs [s]
ontime5	5157.00151366	Sum of GTIs [s]
ontime6	5156.9604736567	Sum of GTIs [s]
ontime7	5157.0425536633	Sum of GTIs [s]
ontime8	5153.6373338103	Sum of GTIs [s]
l2events	265326	Number of level 2 events



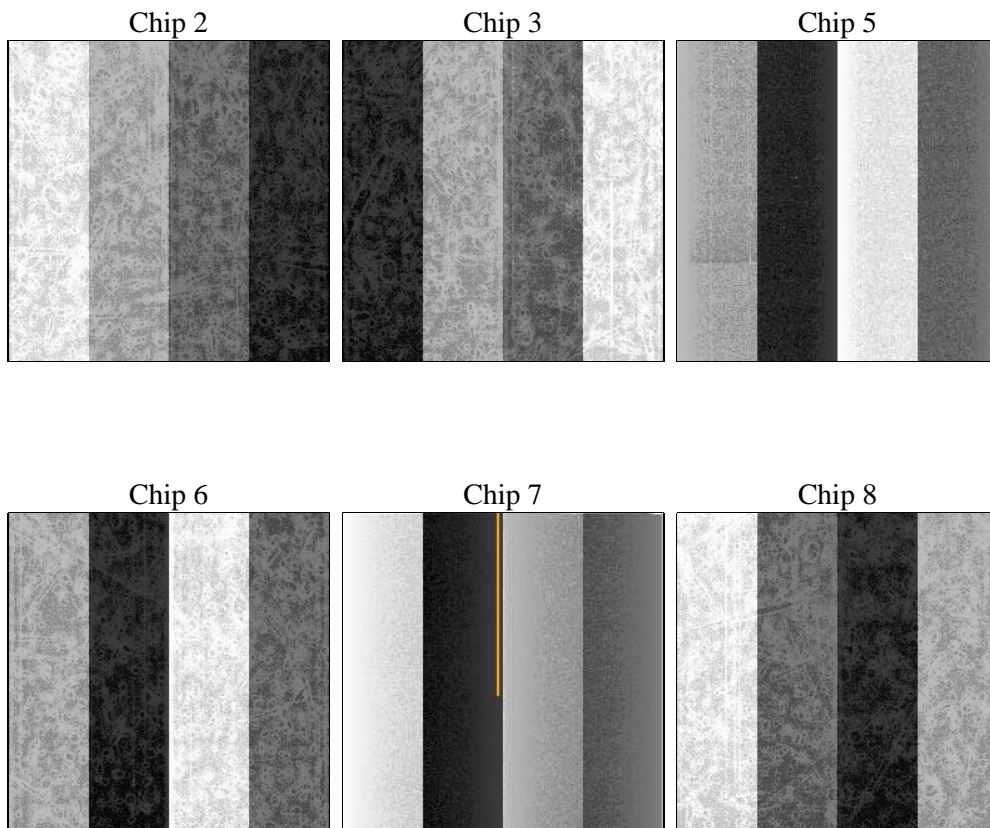
2 OBI

2.1 OBI

2.1.1 Images



2.1.2 Bias



2.1.3 Parameters

obi_num	1	Obi number	sched_exp_time	5400.000000	[s] Scheduled observation exposure time
ascdsver	8.4.4	Processing system revision	ontime	5157.0425536633	Sum of GTIs [s]
caldsver	4.4.9	 	ontime2	5157.0835936666	Sum of GTIs [s]
date	2012-05-10T08:01:11	Date and time of file creation	ontime3	5156.9194336534	Sum of GTIs [s]
revision	2	Processing version of data	ontime5	5157.00151366	Sum of GTIs [s]
			ontime6	5156.9604736567	Sum of GTIs [s]
			ontime7	5157.0425536633	Sum of GTIs [s]
			ontime8	5153.6373338103	Sum of GTIs [s]
			l1events	564071	Number of level 1 events

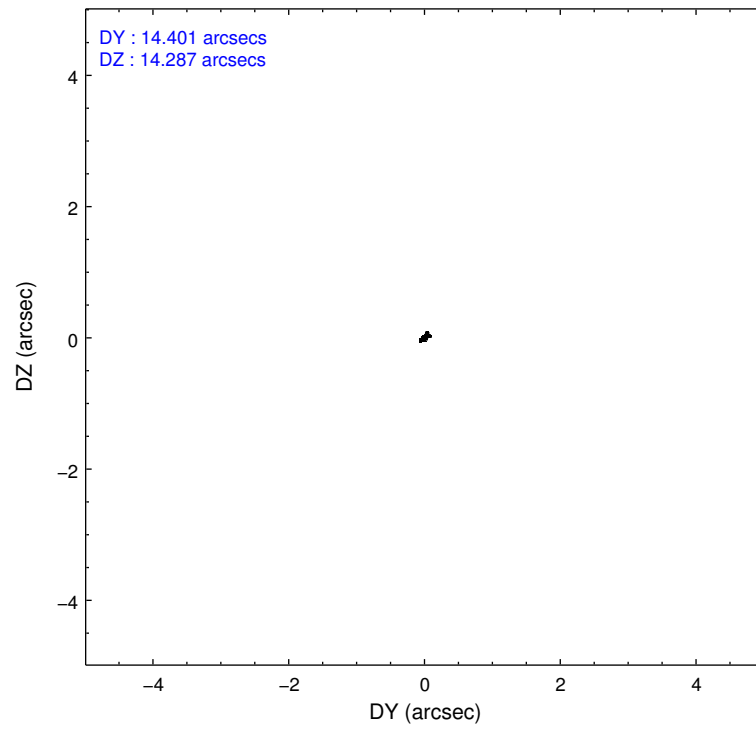
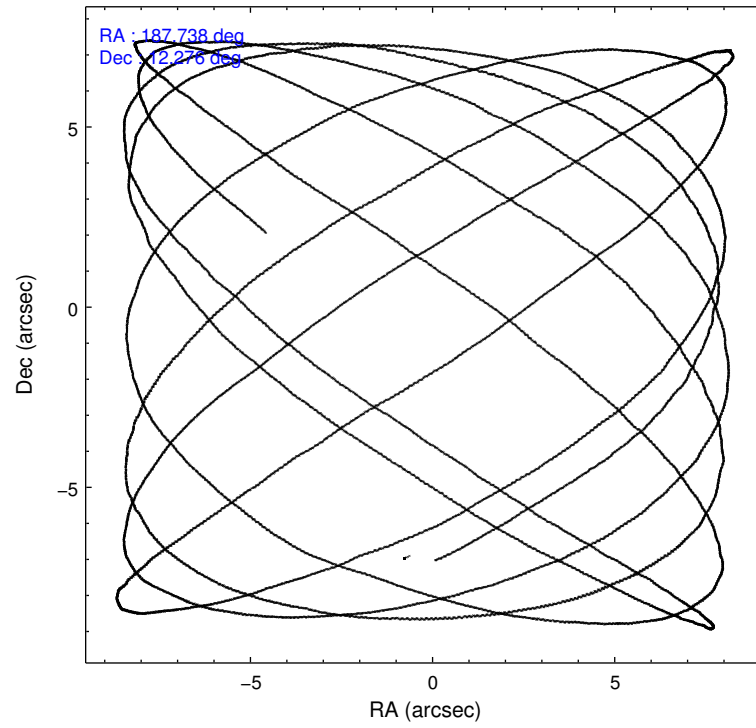
2.1.4 Events

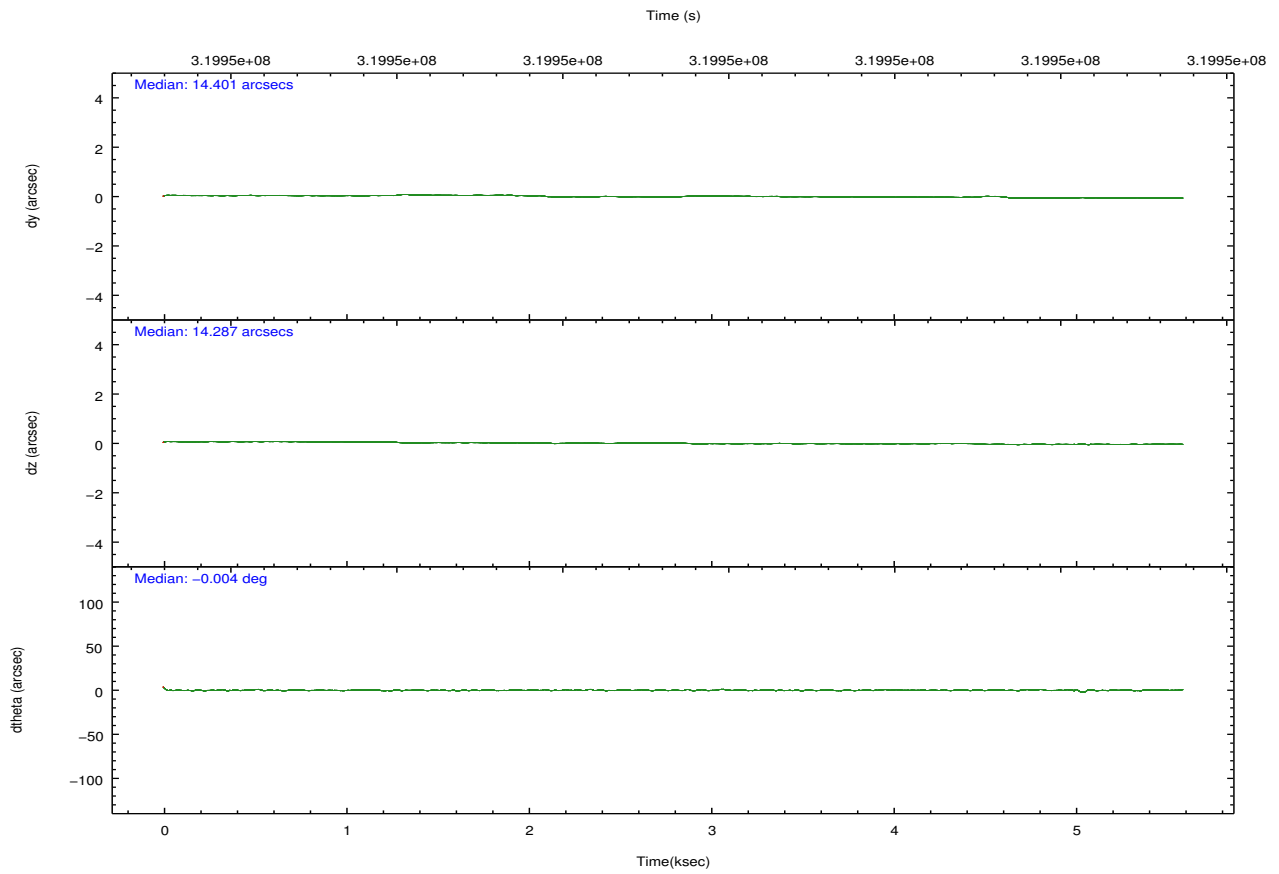
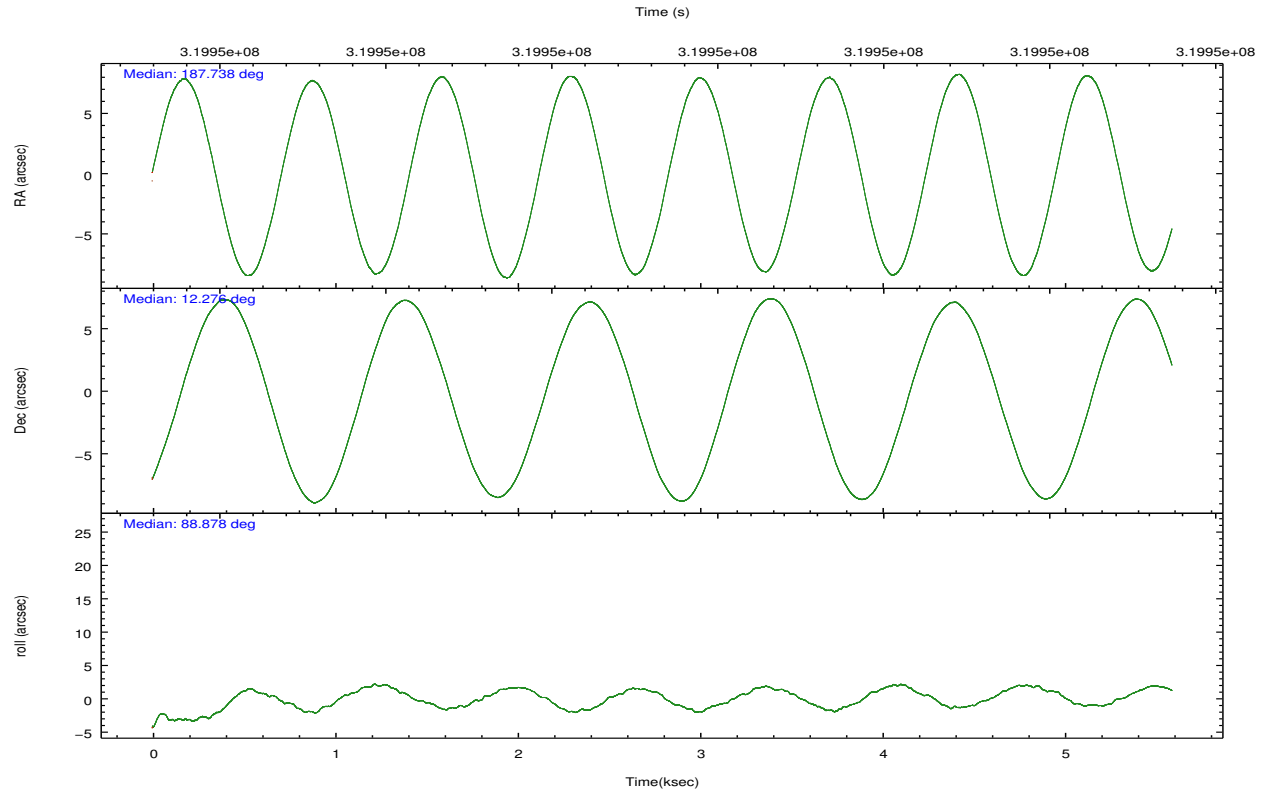
	ccd 2	ccd 3	ccd 5	ccd 6	ccd 7	ccd 8		ccd 2	ccd 3	ccd 5	ccd 6	ccd 7	ccd 8
level 1 events	58987	54204	112676	165819	98915	73470	grade 0 events	8395	7187	17963	96908	11622	9703
rejected events	46180	42871	43274	46946	40105	53221		14%	13%	15%	58%	11%	13%
rejected %	78%	79%	38%	28%	40%	72%	grade 1 events	74	51	117	782	70	94
								0%	0%	0%	0%	0%	0%
							grade 2 events	1873	1617	19671	12080	13882	3764
								3%	2%	17%	7%	14%	5%
							grade 3 events	758	734	3901	3465	5964	1709
								1%	1%	3%	2%	6%	2%
							grade 4 events	729	690	3872	3484	5795	1562
								1%	1%	3%	2%	5%	2%
							grade 5 events	2039	2299	5921	2809	6516	3139
								3%	4%	5%	1%	6%	4%
							grade 6 events	1068	1120	24072	3069	21618	3563
								1%	2%	21%	1%	21%	4%
							grade 7 events	44051	40506	37159	43222	33448	49936
								74%	74%	32%	26%	33%	67%

2.2 Compared Parameters

Parameter	Planned	Actual	Parameter	Planned	Actual
Instrument	ACIS	ACIS	Obspar format version number	7	7
Detector	ACIS-235678	ACIS-235678	Obspar file type	PREDICTED	ACTUAL
Grating	NONE	NONE	Obspar update status	NONE	UPDATED
Data mode	FAINT	FAINT	CCD I0 on	N	N
Observation mode	POINTING	POINTING	CCD I1 on	N	N
[deg] Pointing RA	187.751325	187.7374565153129	CCD I2 on	O1	Y
[deg] Pointing Dec	12.251860	12.275717528104	CCD I3 on	O2	Y
[deg] Pointing Roll	88.725981	88.88555681940193	CCD S0 on	N	N
[mm] SIM focus pos	-0.684267	-0.6828225247311905	CCD S1 on	O3	Y
[mm] SIM defocus	0	0.001444936568705701	CCD S2 on	Y	Y
[mm] SIM translation stage pos	-190.132523	-190.1425803651734	CCD S3 on	Y	Y
[mm] SIM translation stage offset	0	0.01005778216563158	CCD S4 on	O4	Y
[s] Observation start time (MET)	319947063.184000	319946556.92941	CCD S5 on	N	N
Observation start date	2008-02-21T02:09:58	2008-02-21T02:02:36	Number of optional ACIS chips dropped	0	0
[s] Observation end time (MET)	319952463.184000	319952603.9172	On-chip summing requested	N	N
Observation end date	2008-02-21T03:39:58	2008-02-21T03:43:23	Subarray requested	NONE	NONE
Read mode	TIMED	TIMED	Alternating exposures requested	N	N
			[s] Primary exposure time	0.000000	3.2

2.3 Aspect



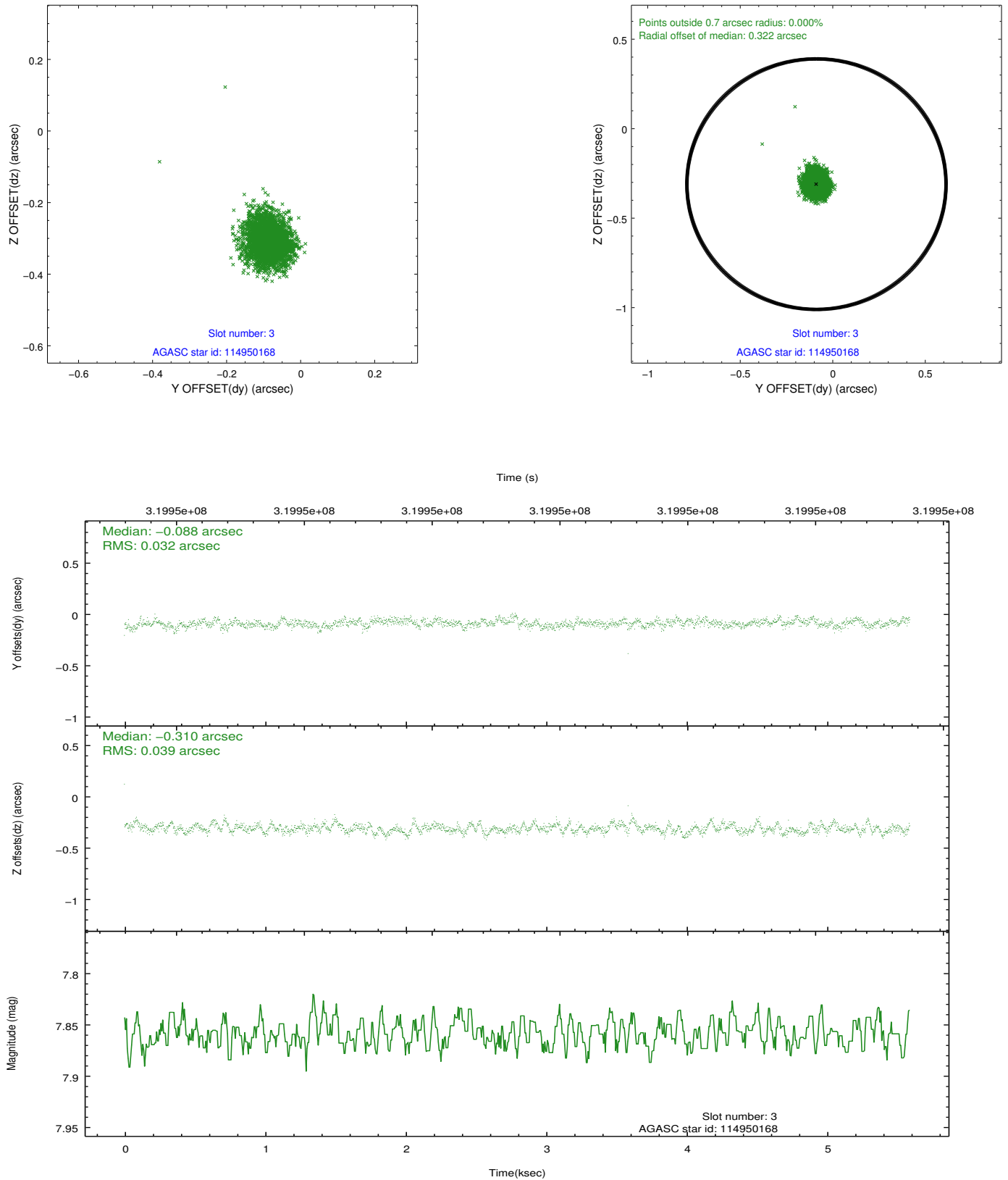


Slot Statistics

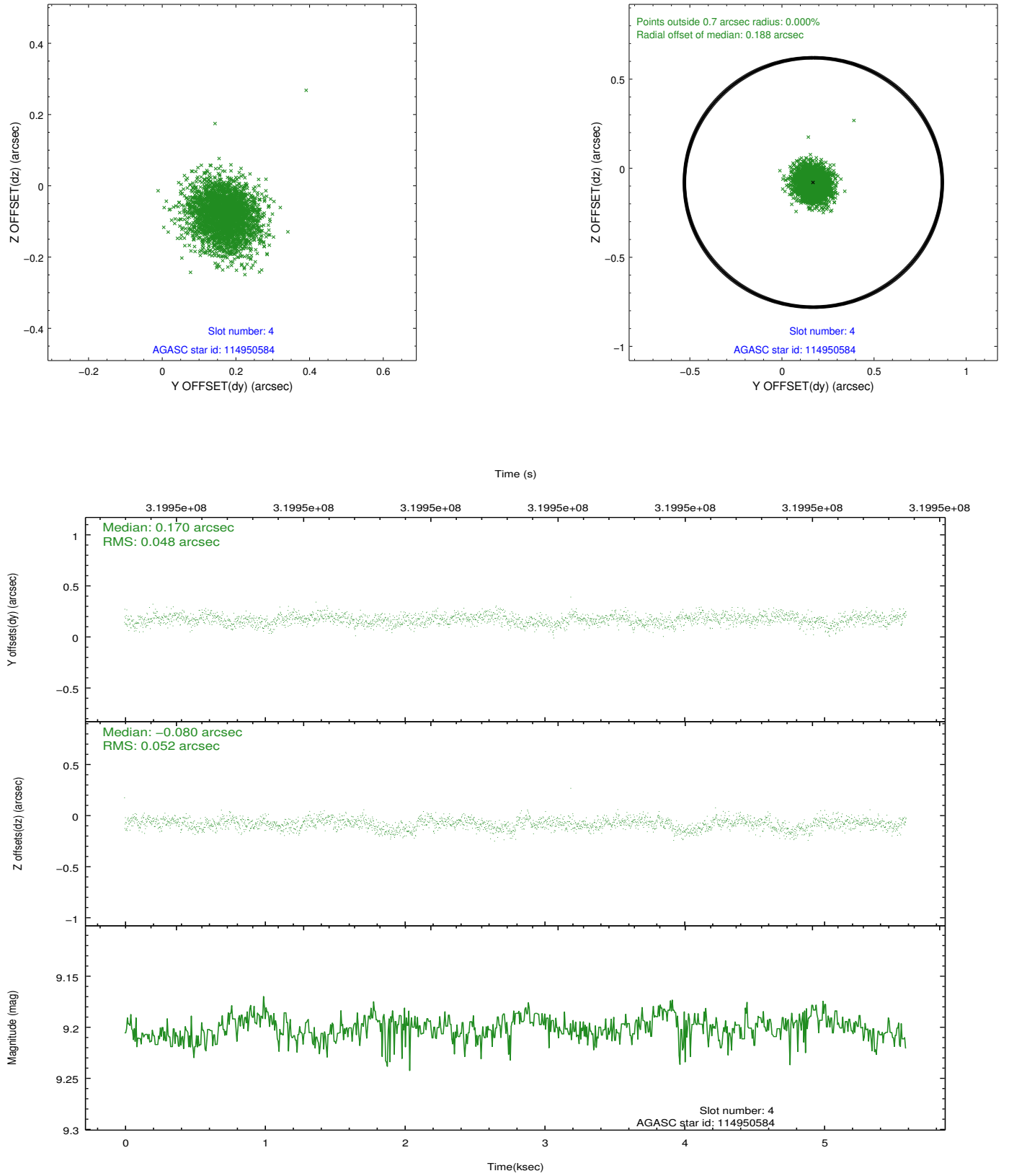
slot	status	id	mag	n_pts	med_dy	med_dz	dr1	dr2	ra	dec	mean_y	mean_z
0	FID	ACIS-S-2	7.10	1364	-0.083	-0.058	0.007	0.012	0.000000	0.000000	-767.44	-1735.66
1	FID	ACIS-S-4	7.19	1362	0.209	0.056	0.006	0.012	0.000000	0.000000	2145.64	171.83
2	FID	ACIS-S-5	7.22	1364	-0.157	0.011	0.007	0.011	0.000000	0.000000	-1818.98	166.67
3	GUIDE	114950168	7.86	2727	-0.088	-0.310	0.053	0.086	187.143398	12.117441	-529.77	2128.39
4	GUIDE	114950584	9.20	2725	0.170	-0.080	0.075	0.122	187.487323	11.827248	-1548.93	897.06
5	GUIDE	114952824	8.54	2727	-0.112	-0.194	0.072	0.113	187.703904	12.486727	840.60	186.25
6	GUIDE	114955056	8.33	2727	0.083	0.497	0.065	0.102	187.914001	12.127854	-433.19	-581.48
7	GUIDE	114955568	7.52	2727	-0.057	0.088	0.062	0.104	187.061916	11.826551	-1582.52	2394.71

2.4 Star Slots

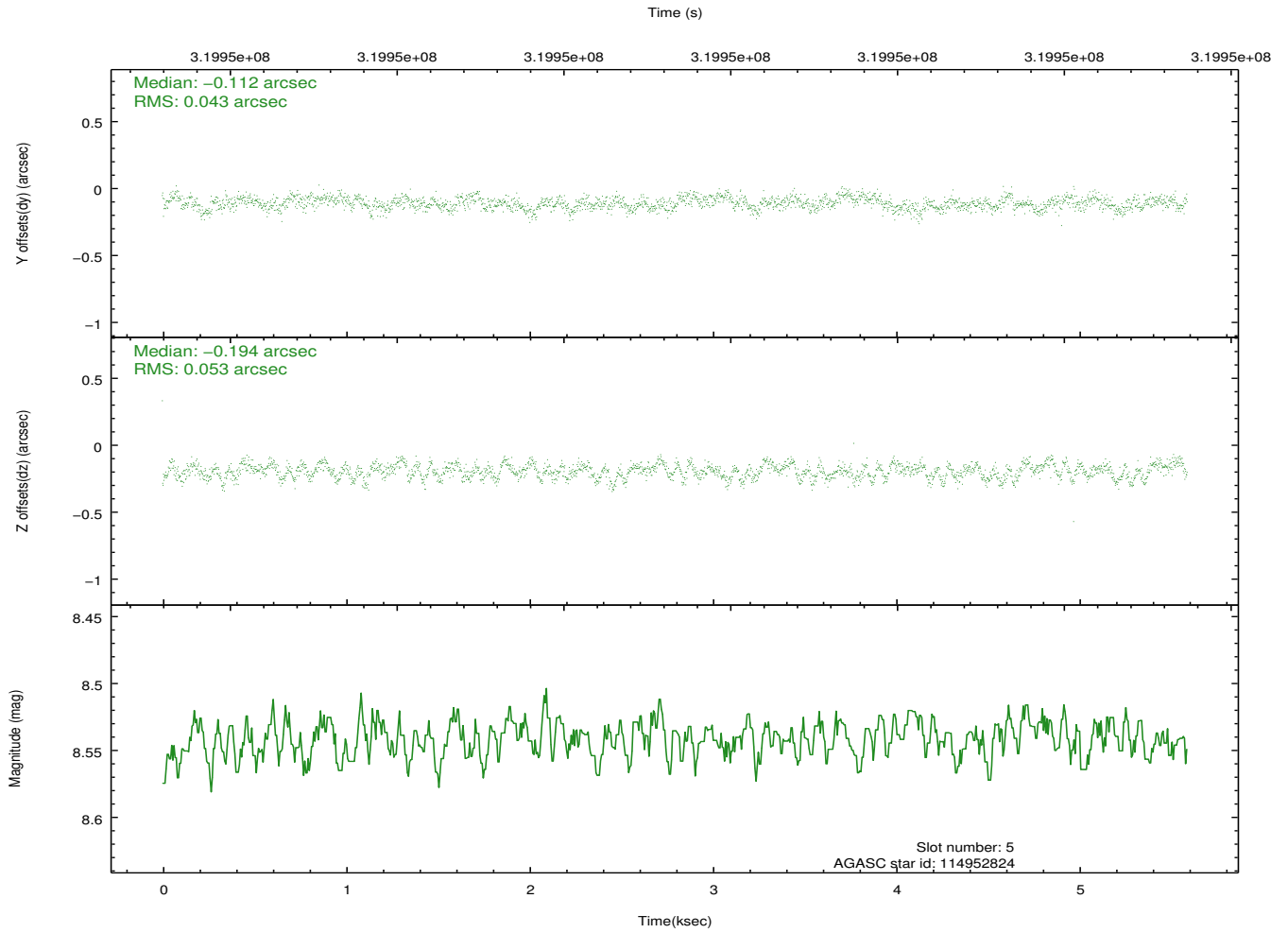
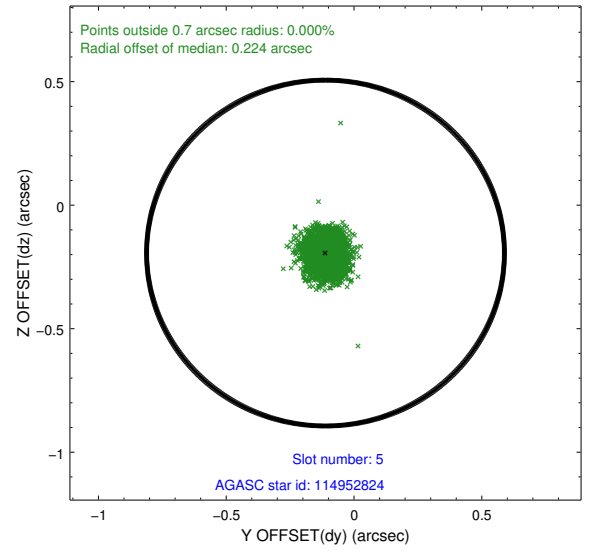
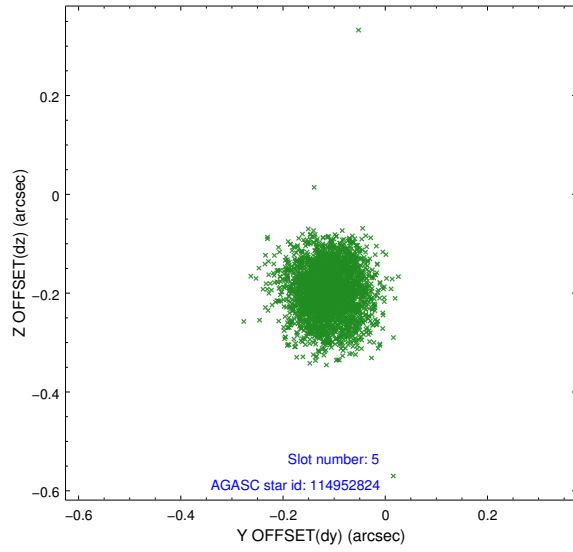
2.4.1 Slot 3



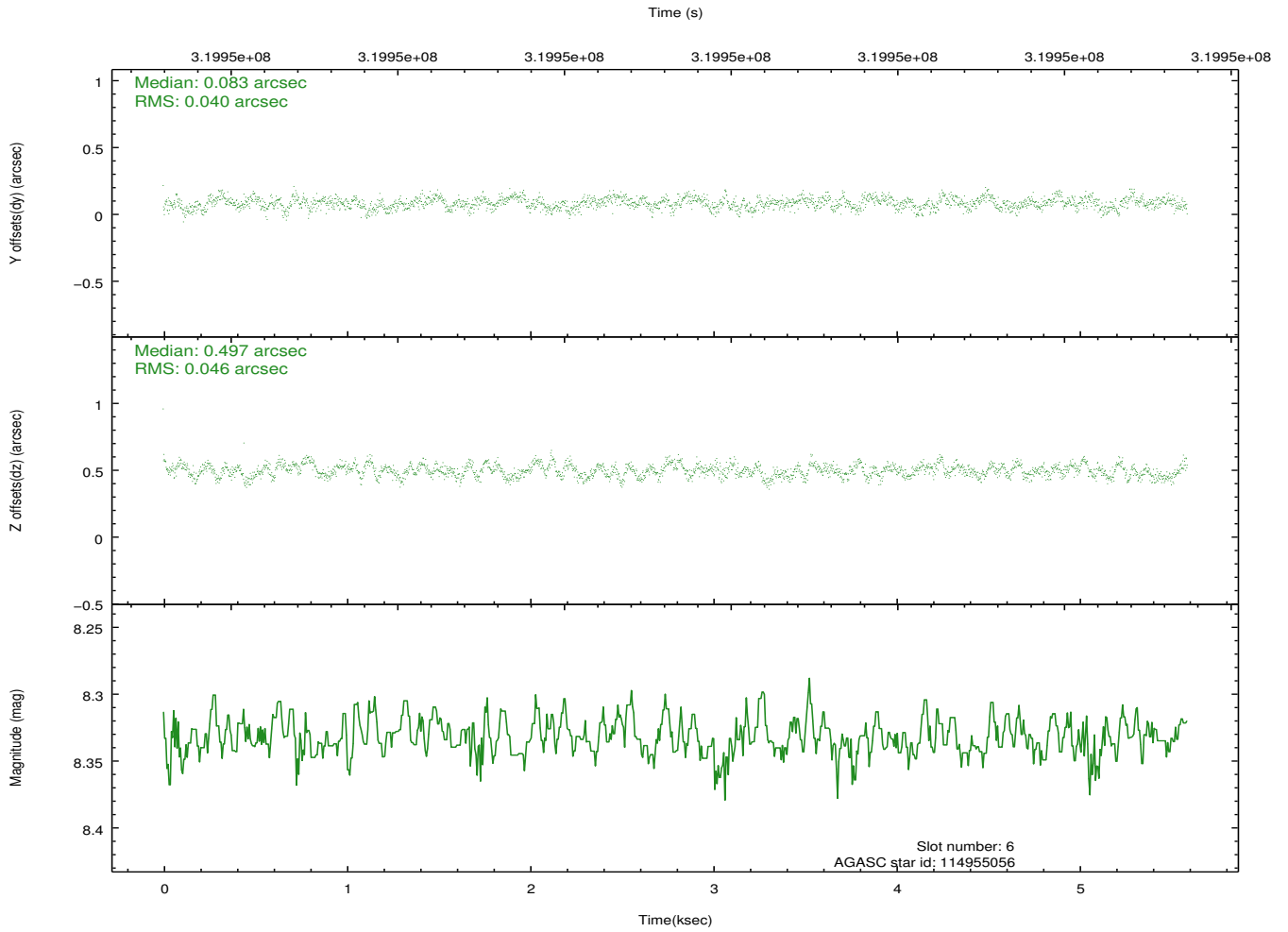
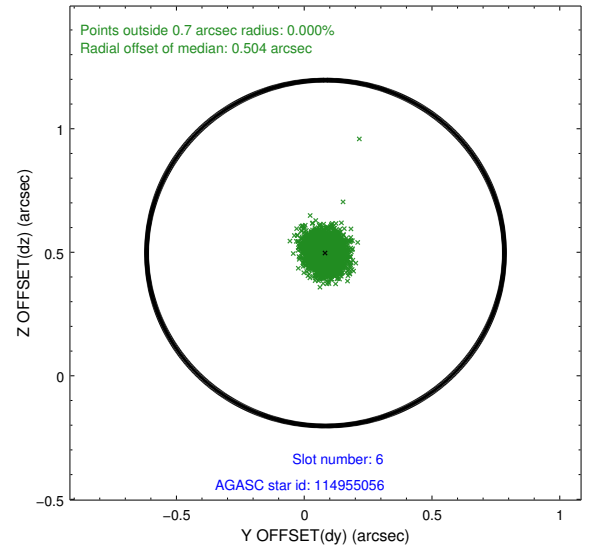
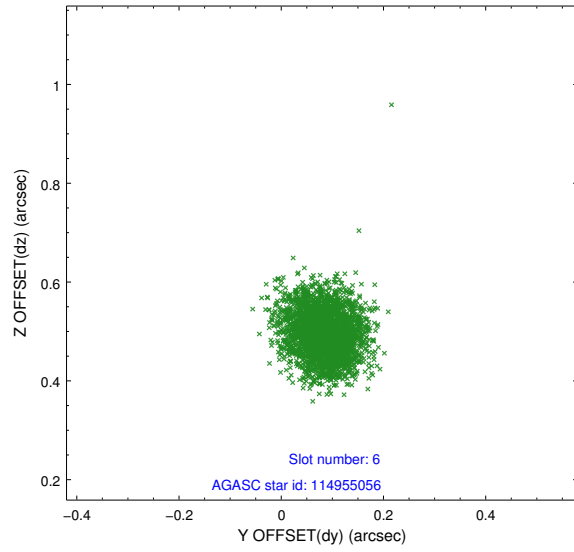
2.4.2 Slot 4



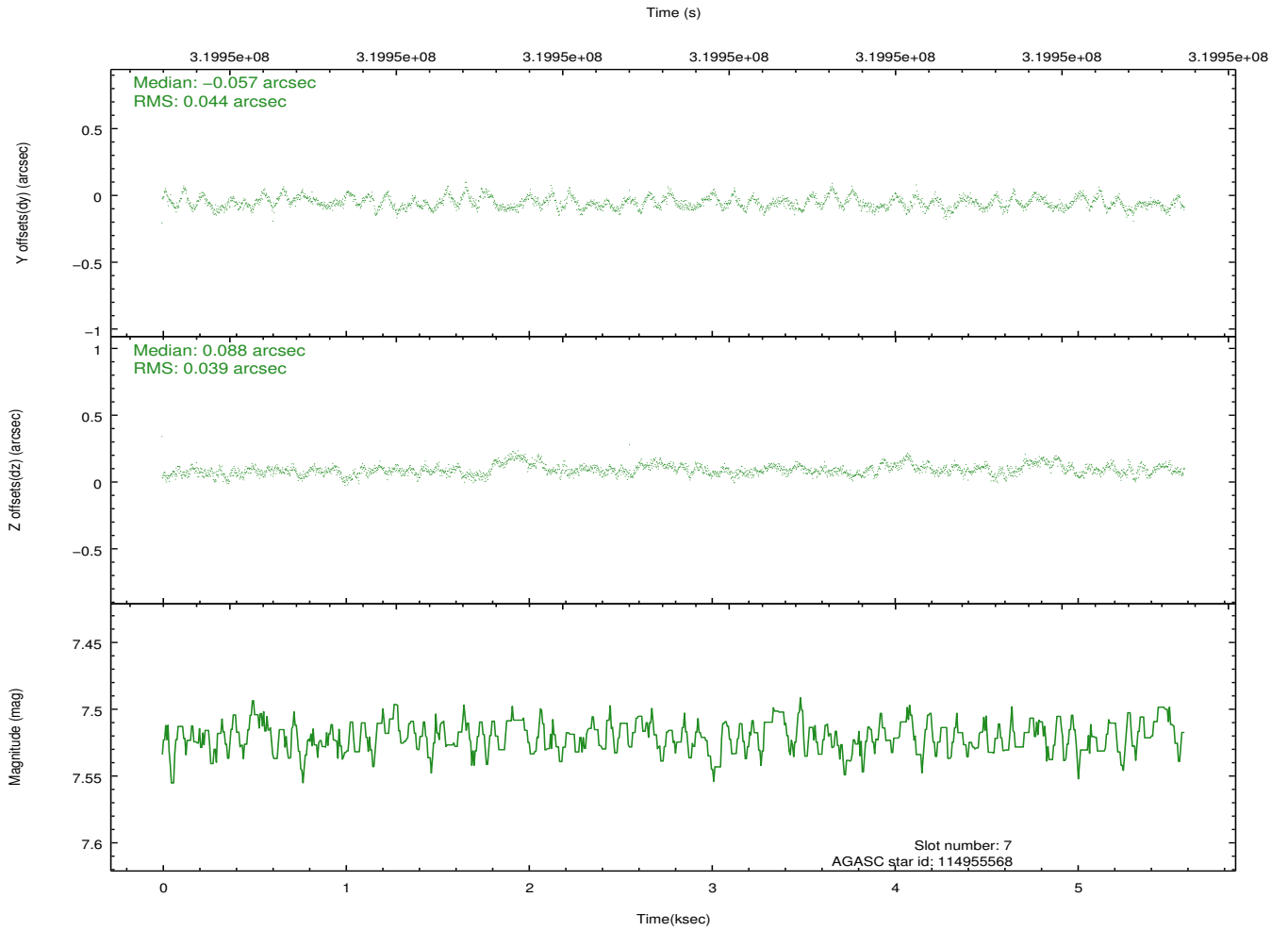
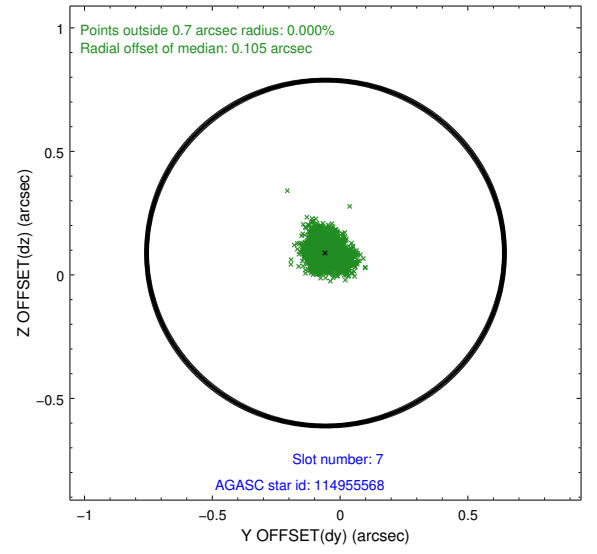
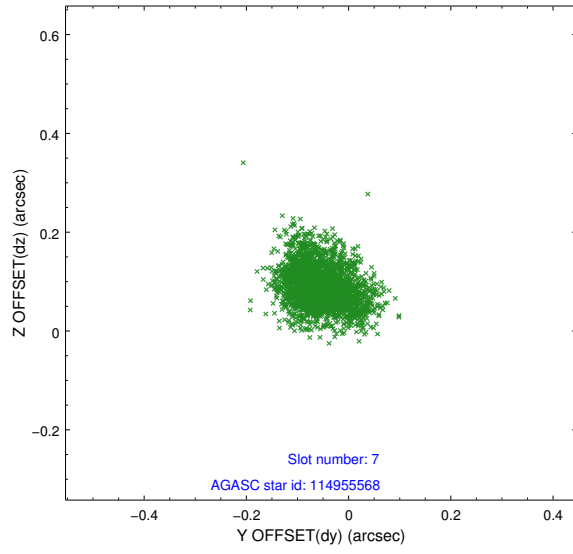
2.4.3 Slot 5



2.4.4 Slot 6

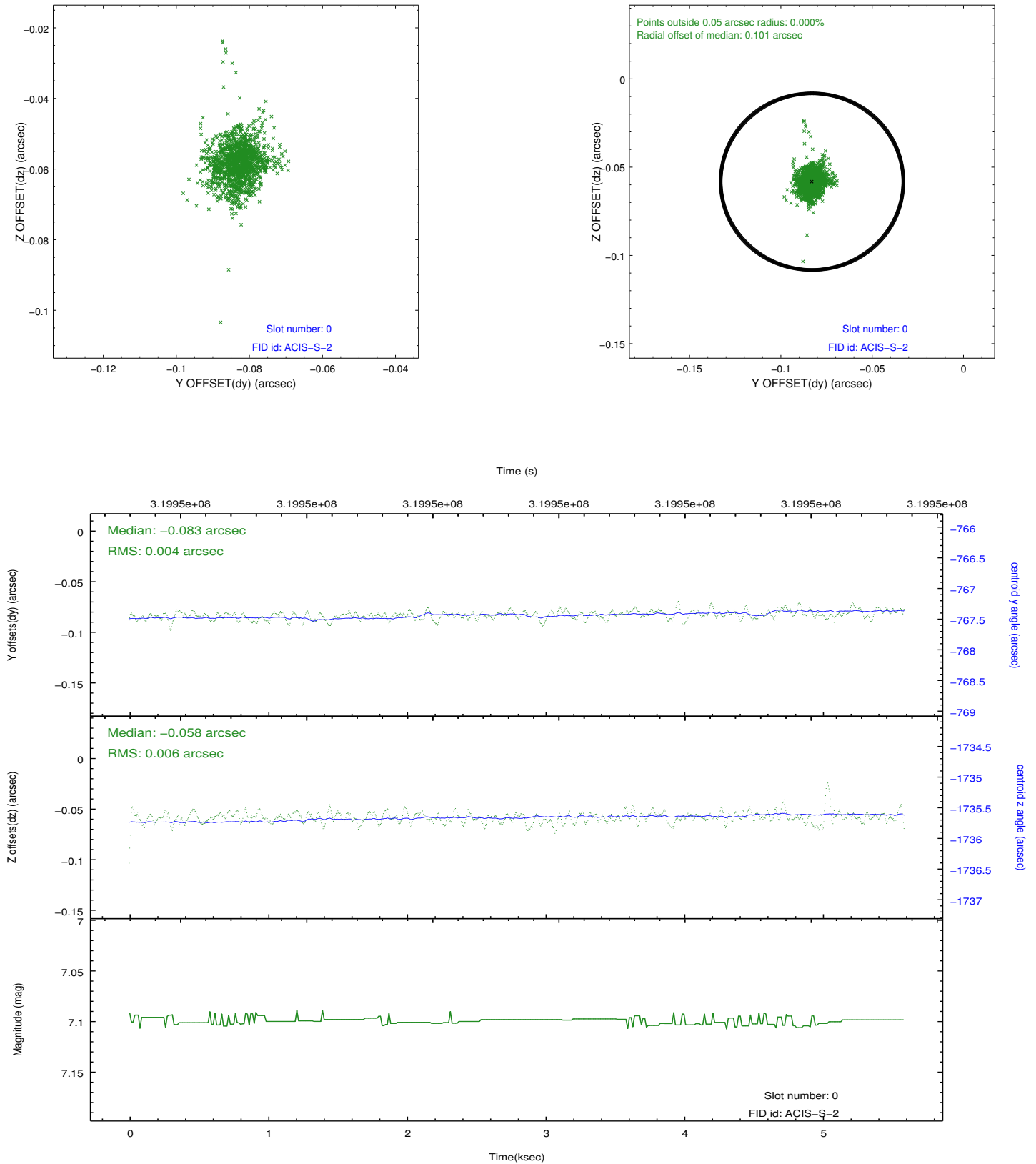


2.4.5 Slot 7

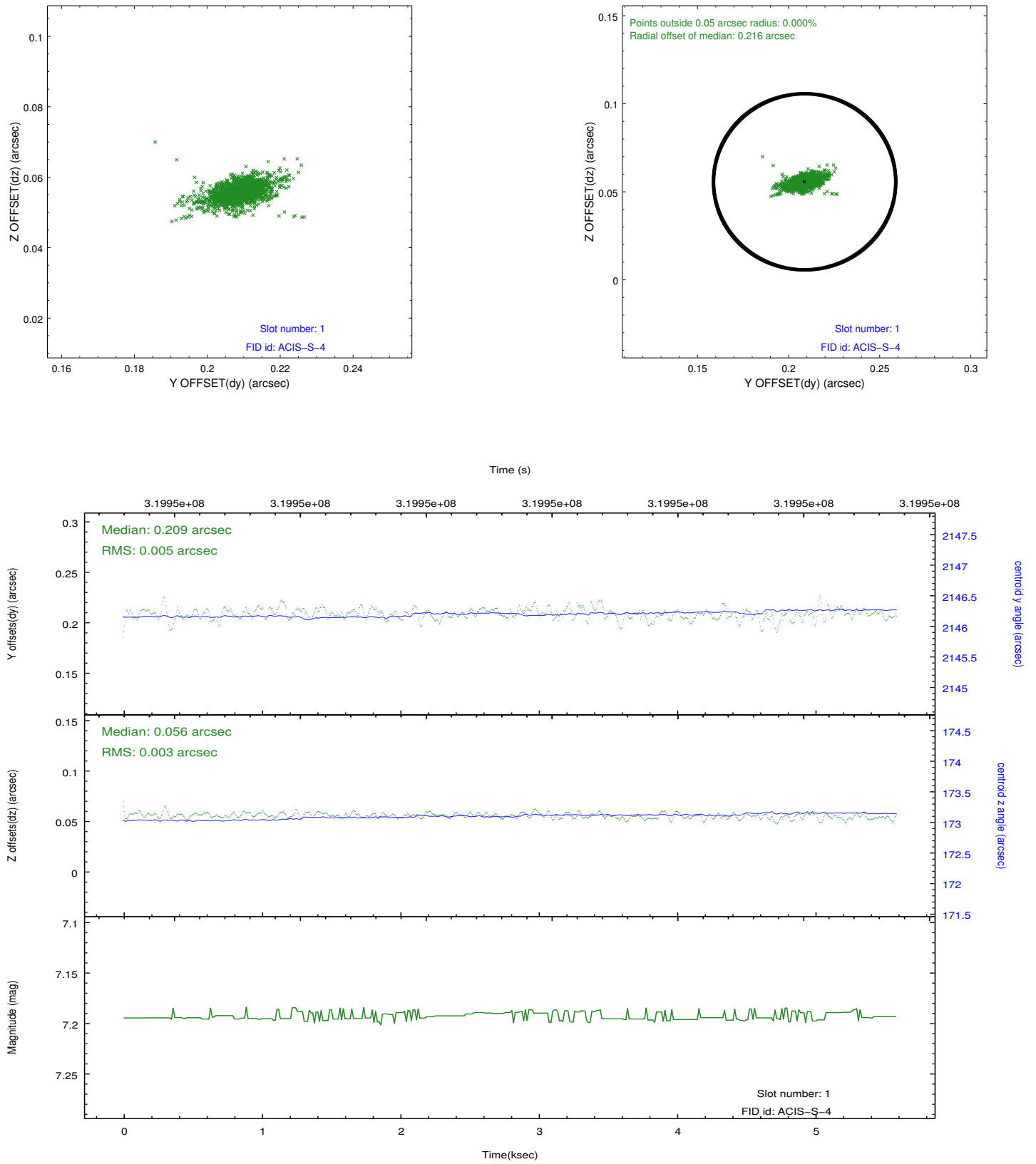


2.5 FID Slots

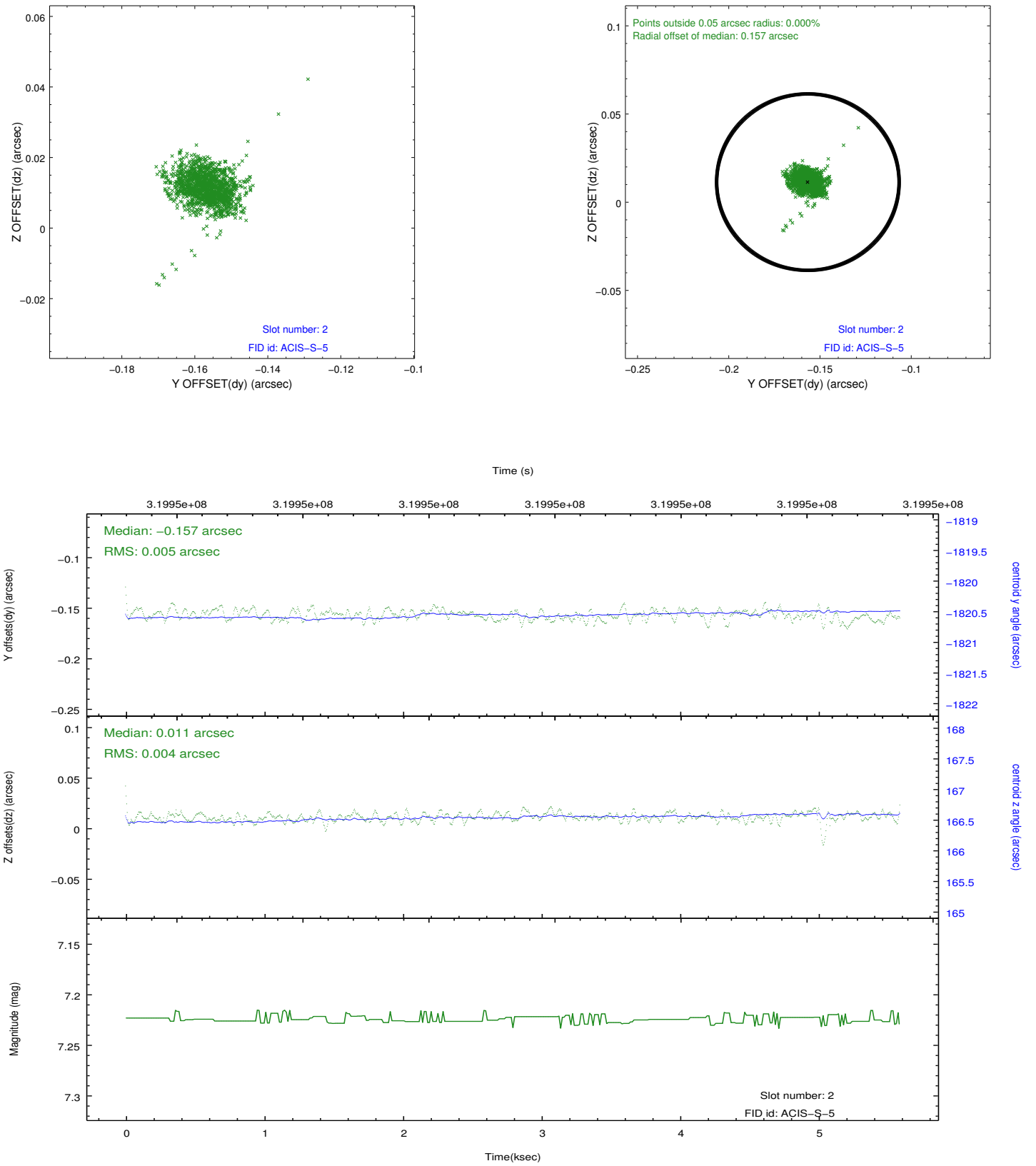
2.5.1 Slot 0



2.5.2 Slot 1



2.5.3 Slot 2



A Summary

A.1 Status

V&V Scientist	Jen Lauer
V&V Date (YYYY-MM-DD)	2012.05.13
V&V Edition	1
V&V Disposition and Status	OK
V&V Charge Time	5.15839998

A.2 Comments

Joint Proposal: Spitzer