

# V&V Reference Report

## L2 ASCDS Version : 8.4.4

Observation 7905 - L2 Version 3  
Chandra X-Ray Center

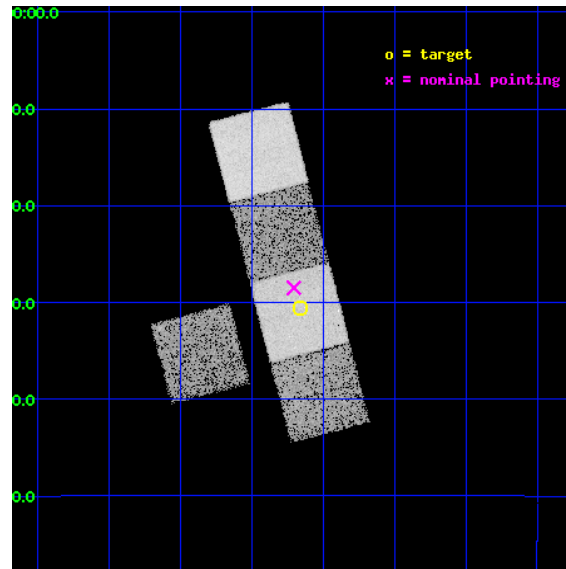
L2 Processing Date : Apr 21 2012

## Contents

<b>1</b>	<b>Front</b>	<b>2</b>
<b>2</b>	<b>OBI</b>	<b>3</b>
2.1	OBI . . . . .	3
2.1.1	Images . . . . .	3
2.1.2	Bias . . . . .	3
2.1.3	Parameters . . . . .	4
2.1.4	Events . . . . .	4
2.2	Compared Parameters . . . . .	5
2.3	Aspect . . . . .	6
2.4	Star Slots . . . . .	9
2.4.1	Slot 3 . . . . .	9
2.4.2	Slot 4 . . . . .	10
2.4.3	Slot 5 . . . . .	11
2.4.4	Slot 6 . . . . .	12
2.4.5	Slot 7 . . . . .	13
2.5	FID Slots . . . . .	14
2.5.1	Slot 0 . . . . .	14
2.5.2	Slot 1 . . . . .	15
2.5.3	Slot 2 . . . . .	16
<b>A</b>	<b>Summary</b>	<b>17</b>
A.1	Status . . . . .	17
A.2	Comments . . . . .	17

# 1 Front

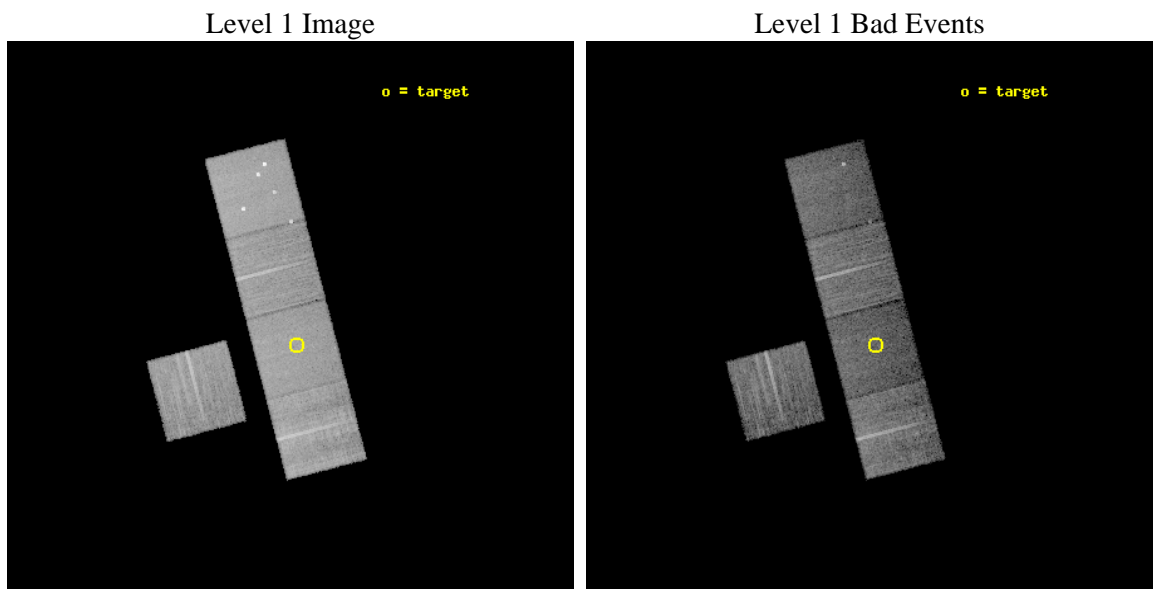
seq_num	800623	Sequence number
obs_id	7905	Observation id
title	IGM in galaxy groups with dominant elliptical galaxy; optically selected fossils	Proposal title
observer	Dr Habib Khosroshahi	Principal investigator
object	Group ID 1404	Source name
dtcycle	0	&#160
cycle	P	events from which exps? Prim/Second/Both
ra_targ	206.415833	Observer's specified target RA [deg]
dec_targ	-5.509167	Observer's specified target Dec [deg]
ra_nom	206.42655180341	Nominal RA [deg]
dec_nom	-5.4749525134556	Nominal Dec [deg]
roll_nom	75.419560774973	Nominal Roll [deg]
revision	3	Processing version of data
ontime	10936.314814329	Sum of GTIs [s]
livetime	10793.423810082	Livetime [s]
ontime3	10933.050703943	Sum of GTIs [s]
ontime5	10936.273774326	Sum of GTIs [s]
ontime6	10936.232734323	Sum of GTIs [s]
ontime7	10936.314814329	Sum of GTIs [s]
ontime8	10936.150654316	Sum of GTIs [s]
l2events	121196	Number of level 2 events



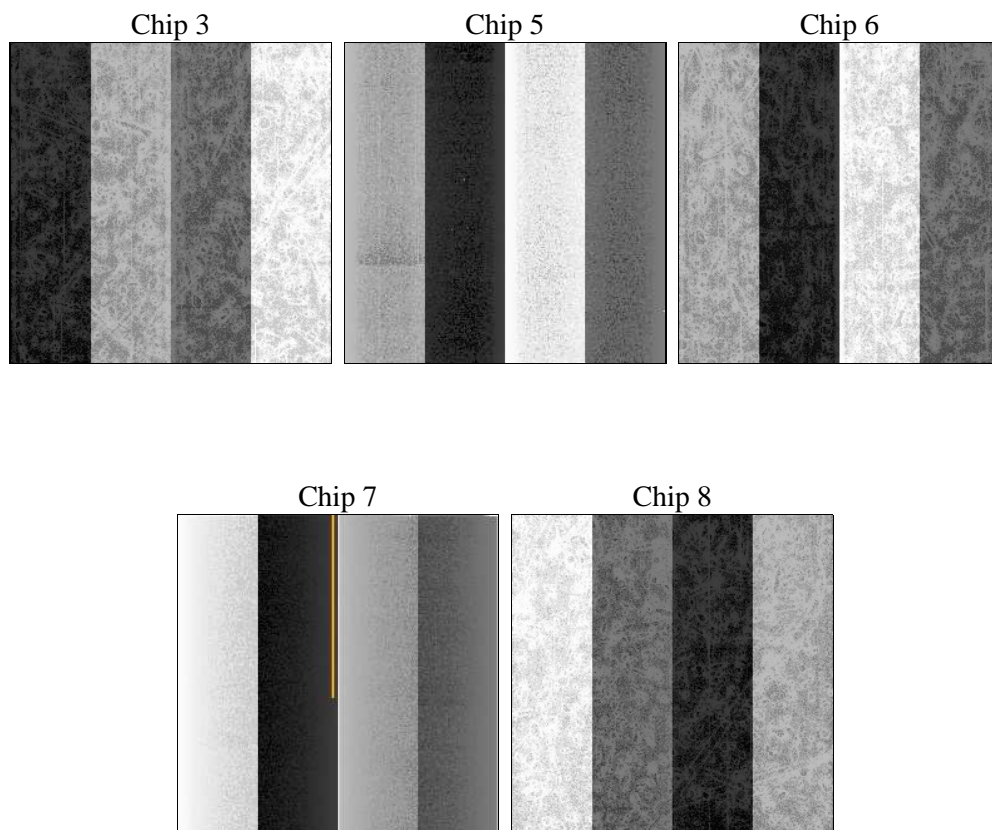
## 2 OBI

### 2.1 OBI

#### 2.1.1 Images



#### 2.1.2 Bias



### 2.1.3 Parameters

obi_num	0	Obi number	sched_exp_time	10900.000000	[s] Scheduled observation exposure time
ascdsver	8.4.4	Processing system revision	ontime	10936.314814329	Sum of GTIs [s]
caldsver	4.4.9	&#160	ontime3	10933.050703943	Sum of GTIs [s]
date	2012-04-21T02:05:54	Date and time of file creation	ontime5	10936.273774326	Sum of GTIs [s]
revision	3	Processing version of data	ontime6	10936.232734323	Sum of GTIs [s]
			ontime7	10936.314814329	Sum of GTIs [s]
			ontime8	10936.150654316	Sum of GTIs [s]
			l1events	504427	Number of level 1 events

### 2.1.4 Events

	ccd 3	ccd 5	ccd 6	ccd 7	ccd 8
level 1 events	84339	126246	89031	95692	109119
rejected events	76354	60510	80141	52138	82816
rejected %	90%	47%	90%	54%	75%

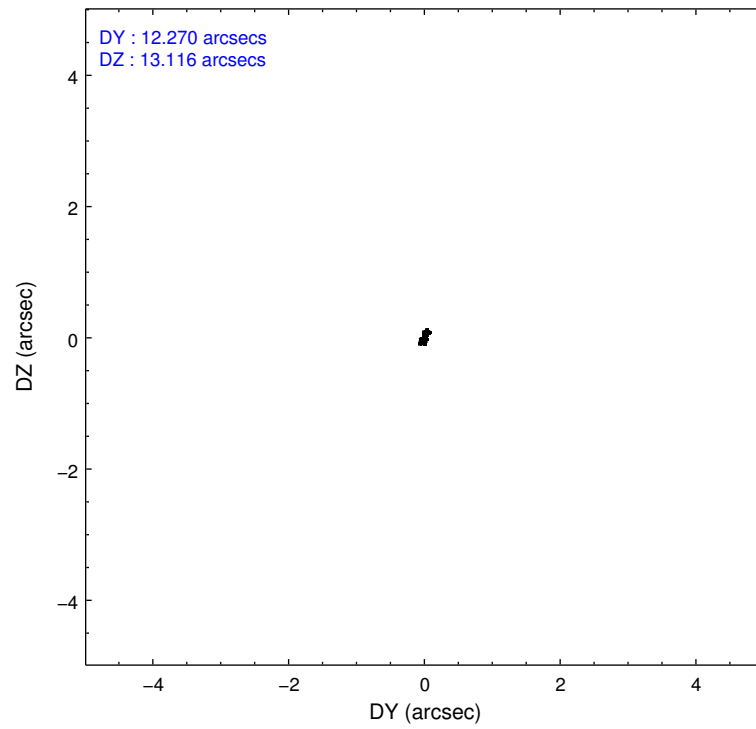
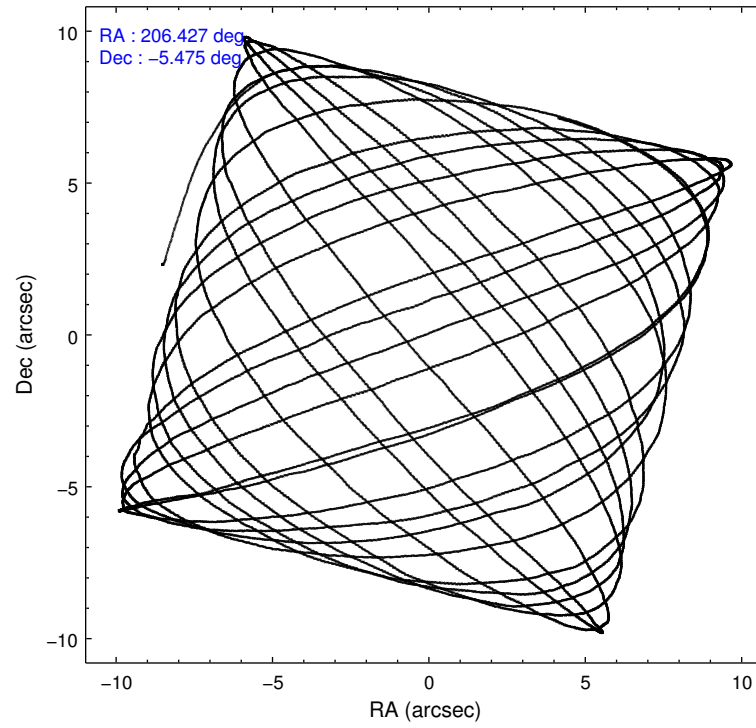
	ccd 3	ccd 5	ccd 6	ccd 7	ccd 8
grade 0 events	2871	11112	3148	4231	7901
	3%	8%	3%	4%	7%
grade 1 events	46	658	41	108	84
	0%	0%	0%	0%	0%
grade 2 events	1725	19312	1939	8594	5974
	2%	15%	2%	8%	5%
grade 3 events	899	2483	917	4121	2883
	1%	1%	1%	4%	2%
grade 4 events	839	2470	980	4014	2656
	0%	1%	1%	4%	2%
grade 5 events	3277	9239	3416	9976	4745
	3%	7%	3%	10%	4%
grade 6 events	1656	30377	1907	22604	6894
	1%	24%	2%	23%	6%
grade 7 events	73026	50595	76683	42044	77982
	86%	40%	86%	43%	71%

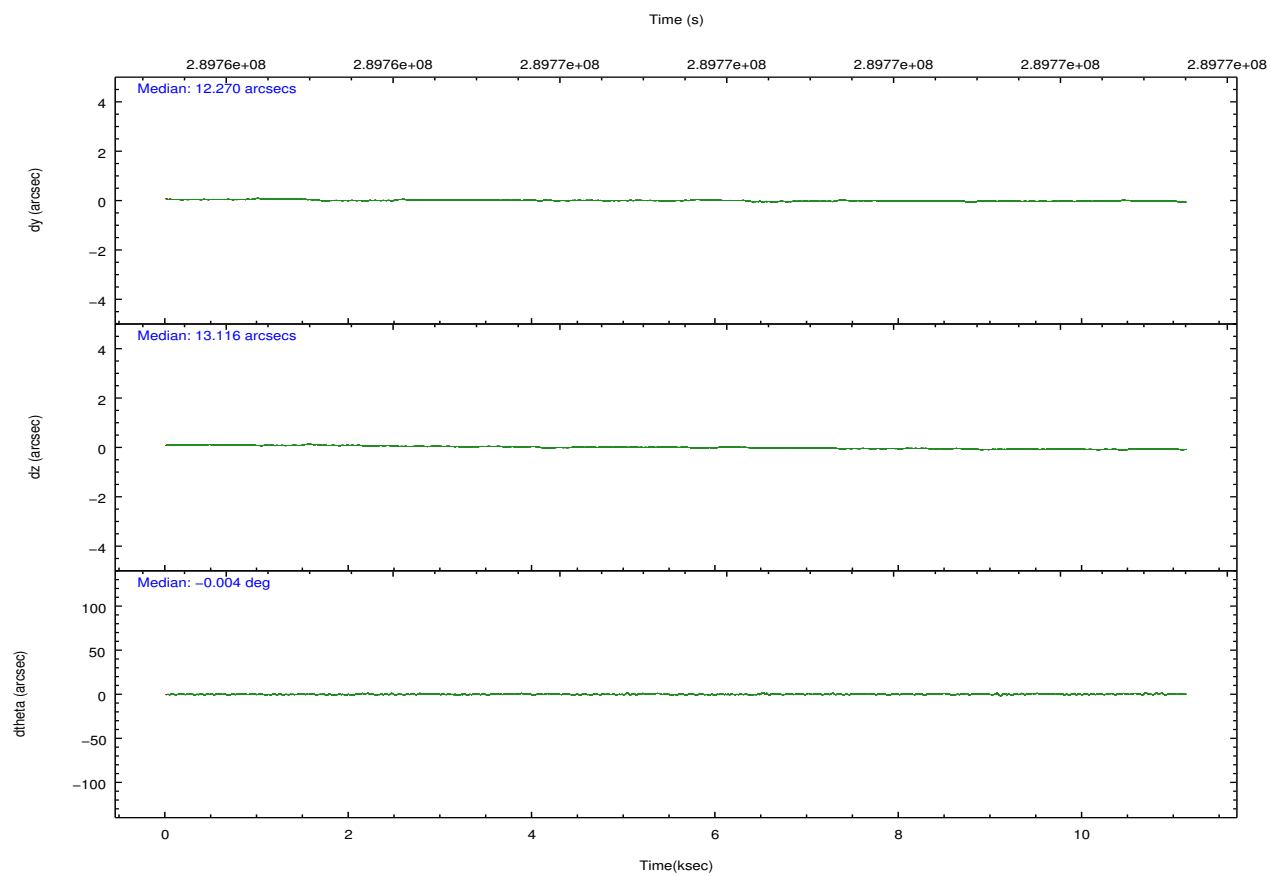
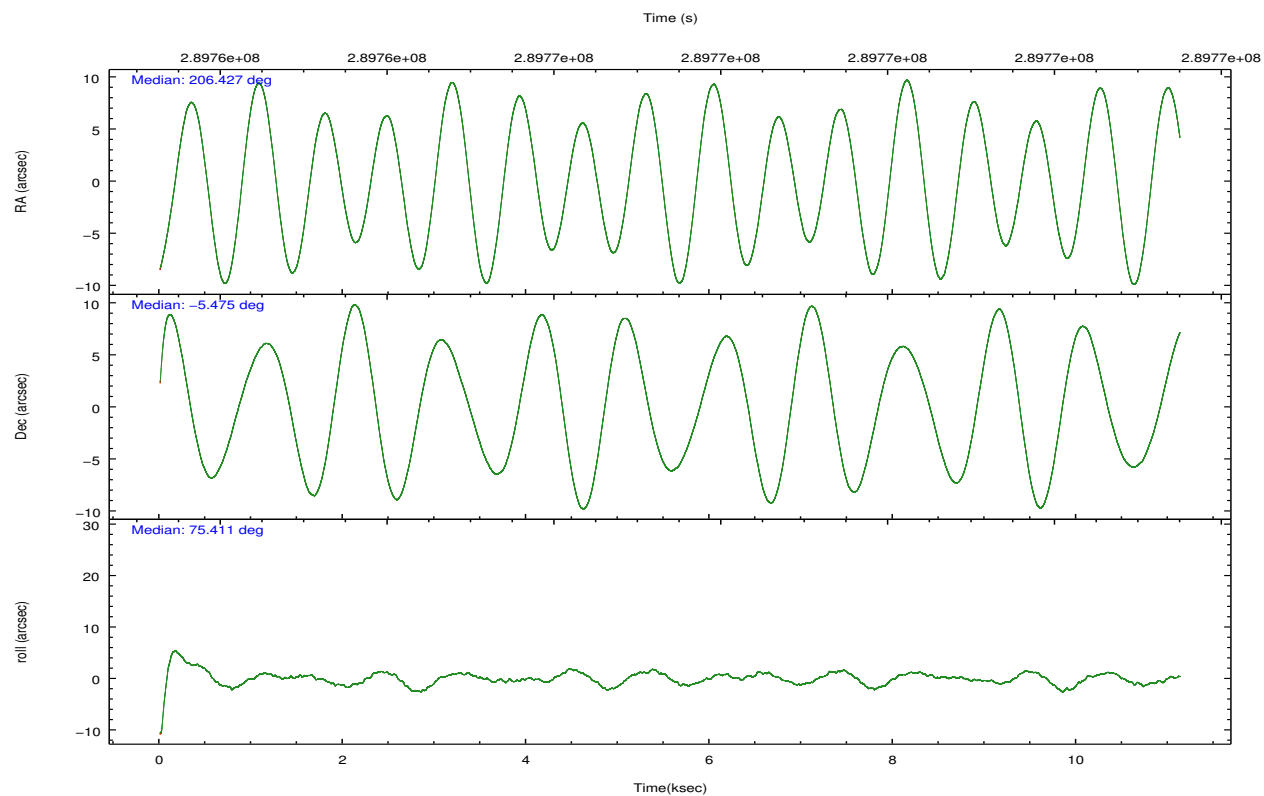


## 2.2 Compared Parameters

Parameter	Planned	Actual	Parameter	Planned	Actual
Instrument	ACIS	ACIS	Obspar format version number	7	7
Detector	ACIS-35678	ACIS-35678	Obspar file type	PREDICTED	ACTUAL
Grating	NONE	NONE	Obspar update status	NONE	UPDATED
Data mode	VFAINT	VFAINT	CCD I0 on	N	N
Observation mode	POINTING	POINTING	CCD I1 on	N	N
[deg] Pointing RA	206.434203	206.4265518034114	CCD I2 on	N	N
[deg] Pointing Dec	-5.501225	-5.474952513455648	CCD I3 on	O1	Y
[deg] Pointing Roll	75.263671	75.41956077497332	CCD S0 on	N	N
[mm] SIM focus pos	-0.684267	-0.6828225247311905	CCD S1 on	Y	Y
[mm] SIM defocus	0	0.001444936568705701	CCD S2 on	Y	Y
[mm] SIM translation stage pos	-190.132523	-190.1425803651734	CCD S3 on	Y	Y
[mm] SIM translation stage offset	0	0.01005778216563158	CCD S4 on	O2	Y
[s] Observation start time (MET)	289762061.184000	289761116.25363	CCD S5 on	N	N
Observation start date	2007-03-08T17:26:36	2007-03-08T17:11:56	Number of optional ACIS chips dropped	0	0
[s] Observation end time (MET)	289772961.184000	289773637.65423	On-chip summing requested	N	N
Observation end date	2007-03-08T20:28:16	2007-03-08T20:40:37	Subarray requested	NONE	NONE
Read mode	TIMED	TIMED	Alternating exposures requested	N	N
			[s] Primary exposure time	0.000000	3.1

## 2.3 Aspect



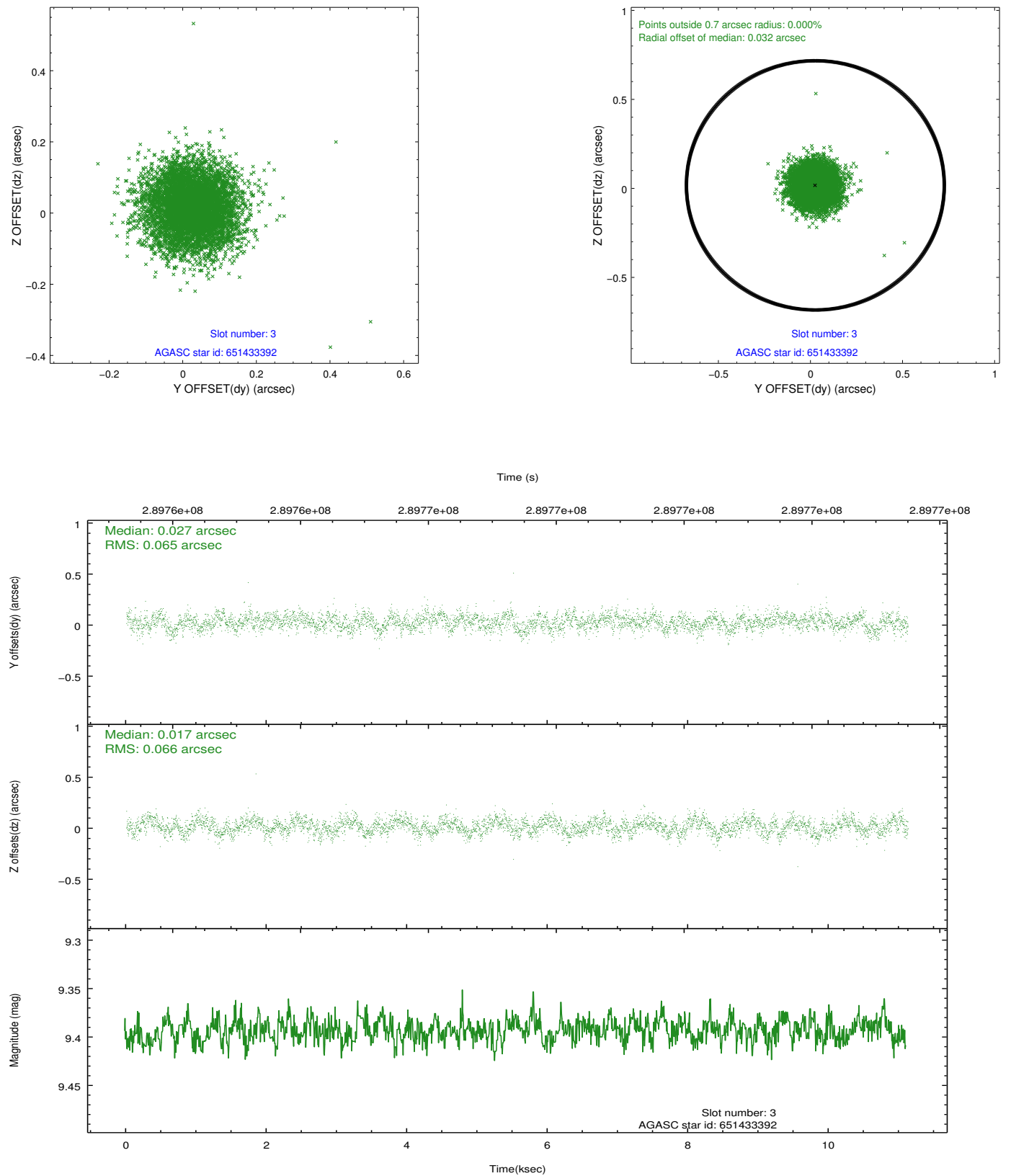


### Slot Statistics

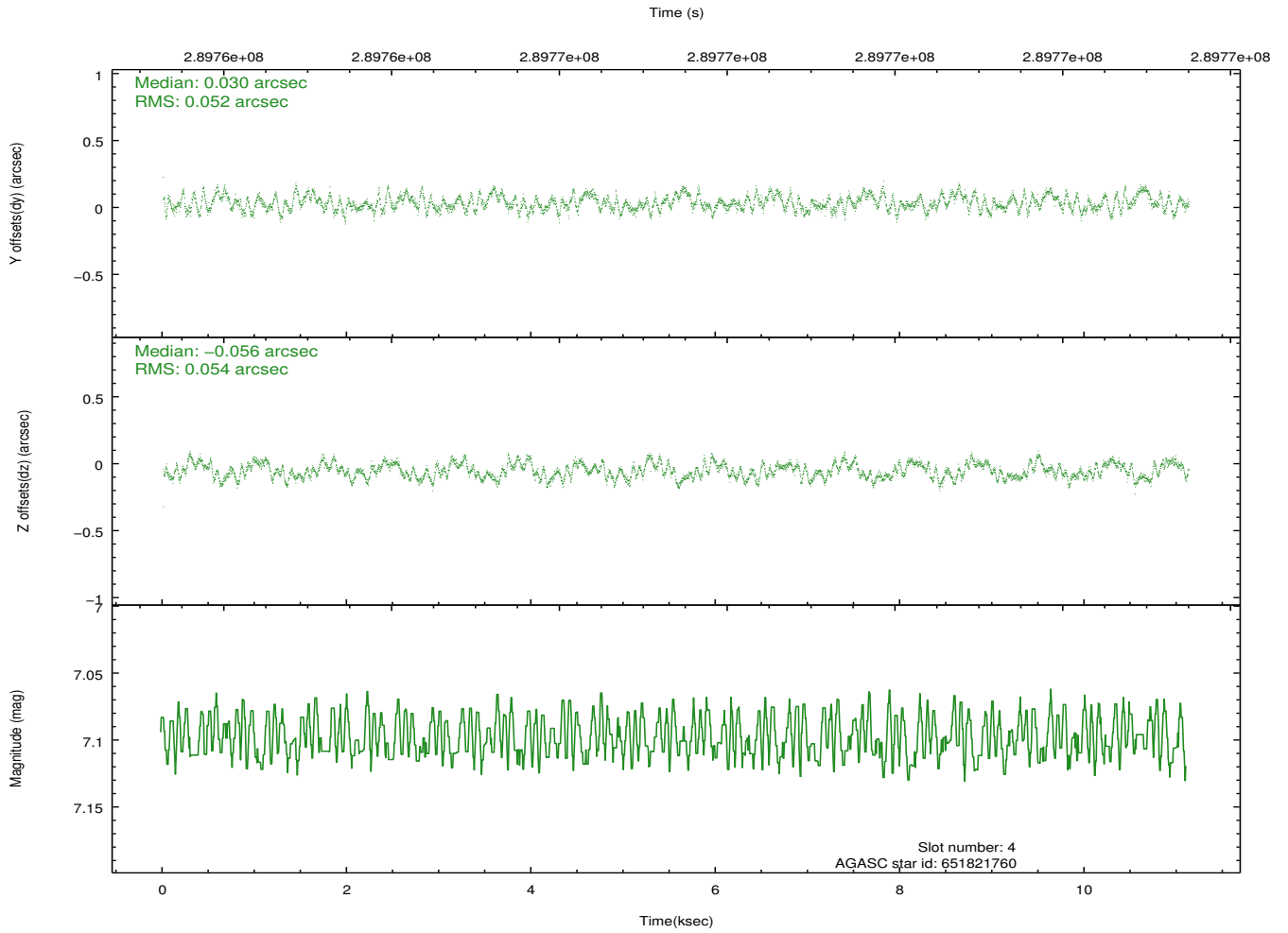
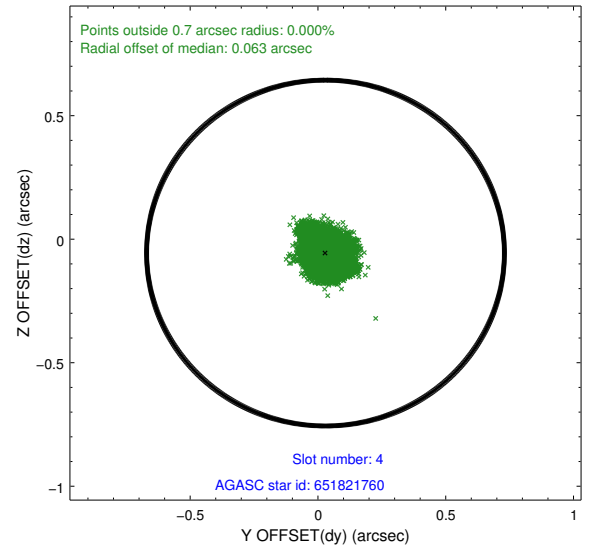
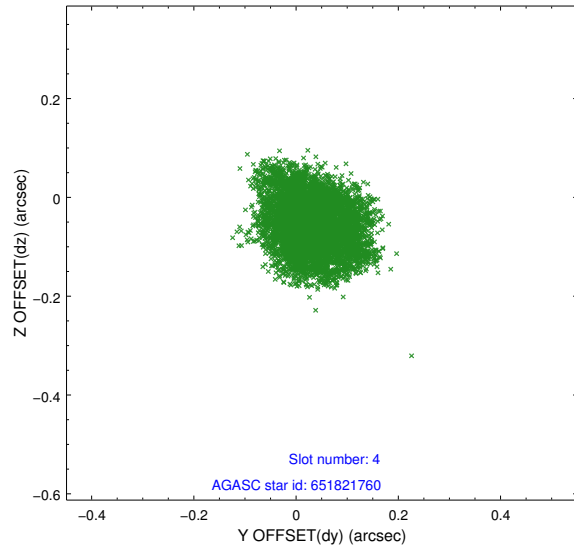
slot	status	id	mag	n_pts	med_dy	med_dz	dr1	dr2	ra	dec	mean_y	mean_z
0	FID	ACIS-S-1	7.18	2713	0.044	-0.018	0.007	0.012	0.000000	0.000000	930.86	-1730.07
1	FID	ACIS-S-2	7.09	2714	-0.121	-0.034	0.007	0.011	0.000000	0.000000	-764.95	-1735.06
2	FID	ACIS-S-4	7.19	2713	0.051	0.058	0.006	0.010	0.000000	0.000000	2147.95	173.66
3	GUIDE	651433392	9.39	5422	0.027	0.017	0.099	0.157	206.169588	-4.799593	2201.12	1561.12
4	GUIDE	651821760	7.10	5427	0.030	-0.056	0.082	0.122	206.237465	-6.002245	-1923.07	222.90
5	GUIDE	651823192	8.20	5422	-0.034	0.018	0.056	0.094	206.722152	-5.445048	457.75	-946.28
6	GUIDE	651828776	9.13	5425	-0.051	0.144	0.144	0.210	206.985064	-5.597973	164.59	-1996.96
7	GUIDE	651833024	6.95	5425	0.022	-0.123	0.063	0.103	205.975993	-5.498934	-410.52	1589.88

## 2.4 Star Slots

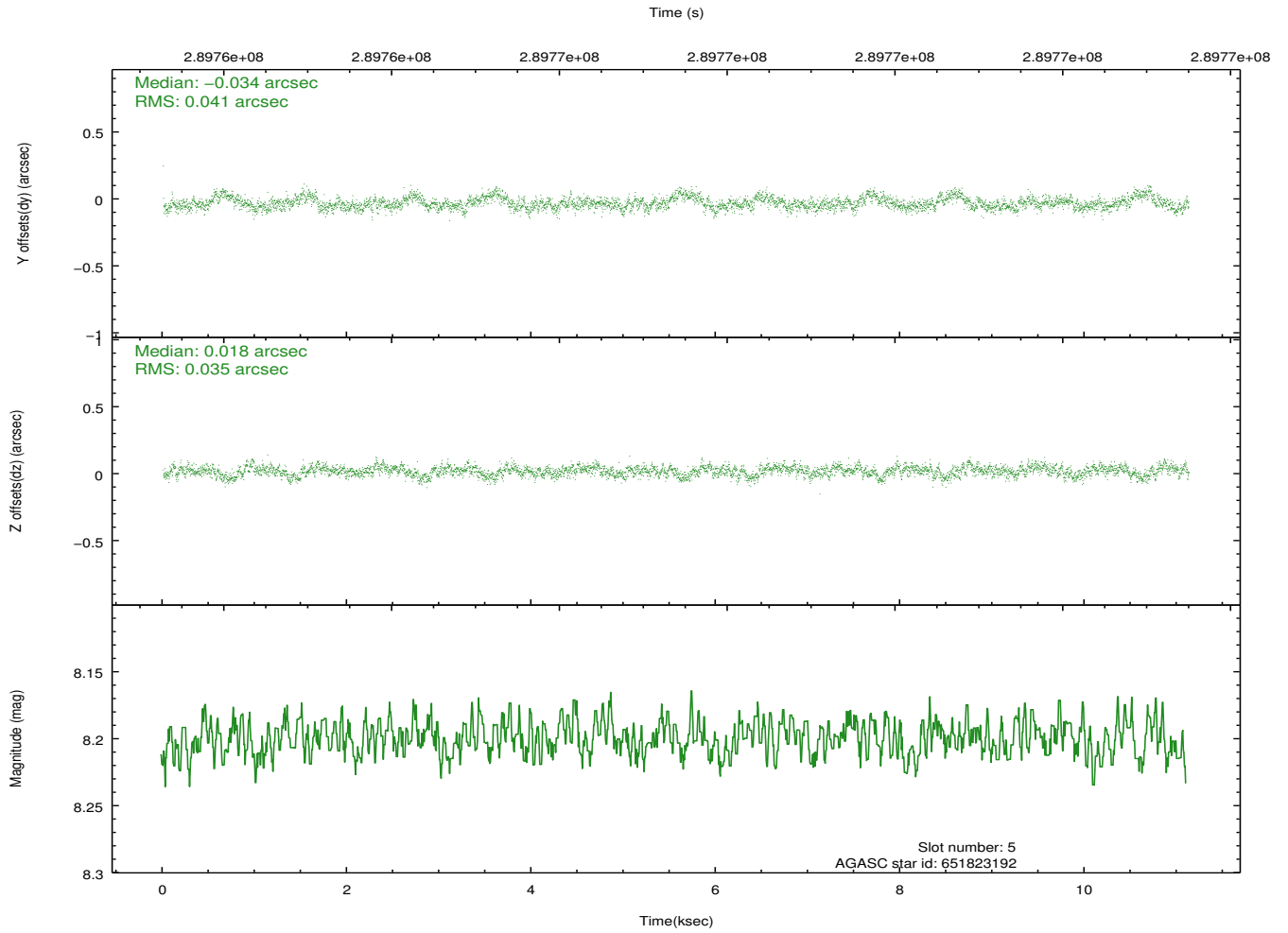
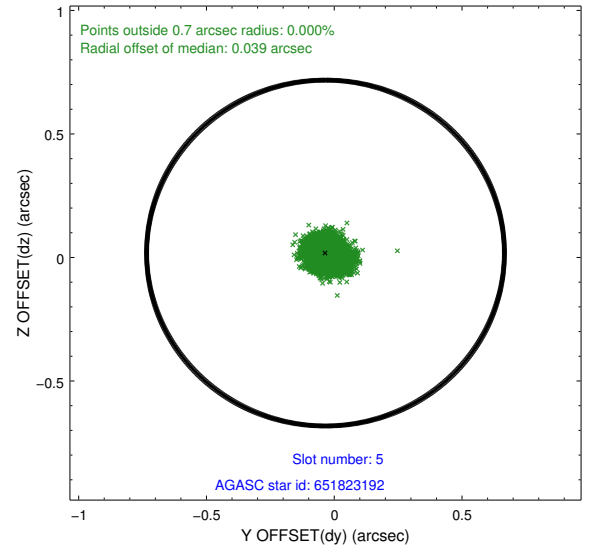
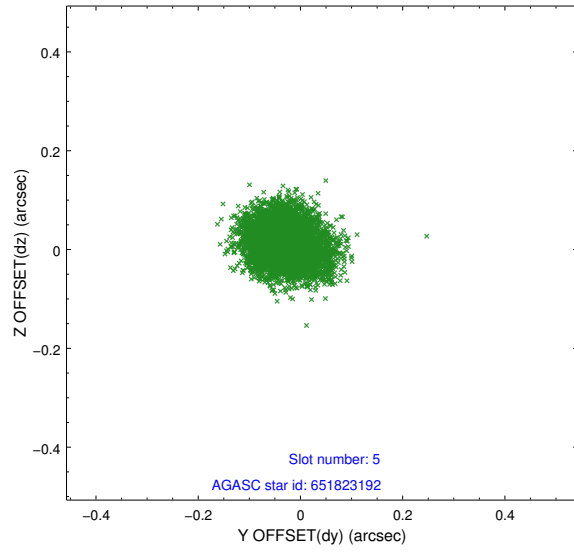
### 2.4.1 Slot 3



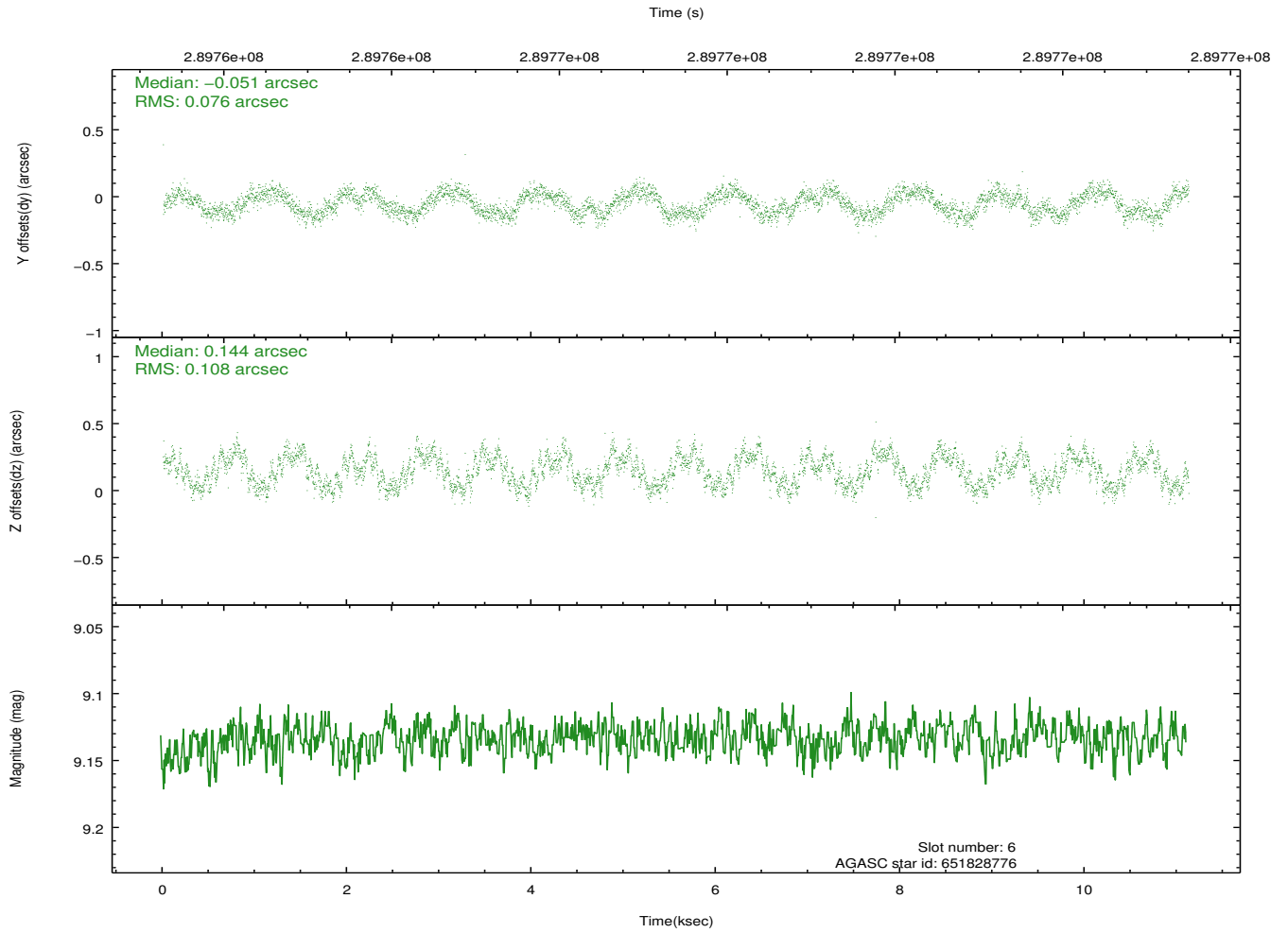
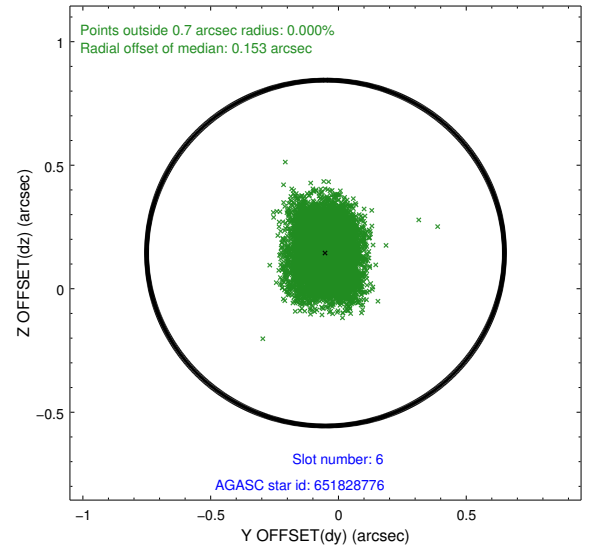
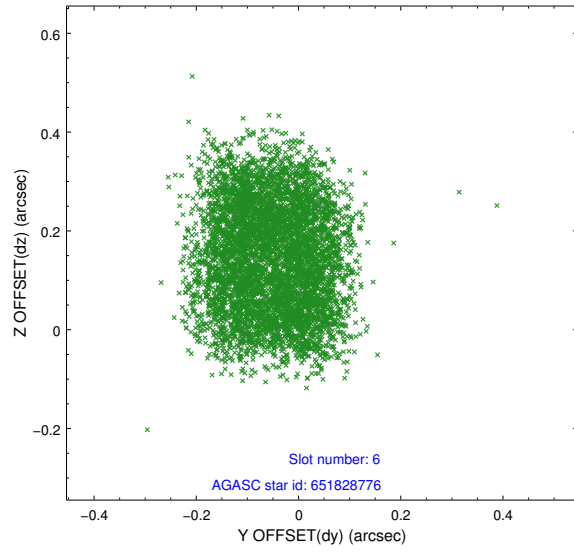
## 2.4.2 Slot 4



### 2.4.3 Slot 5

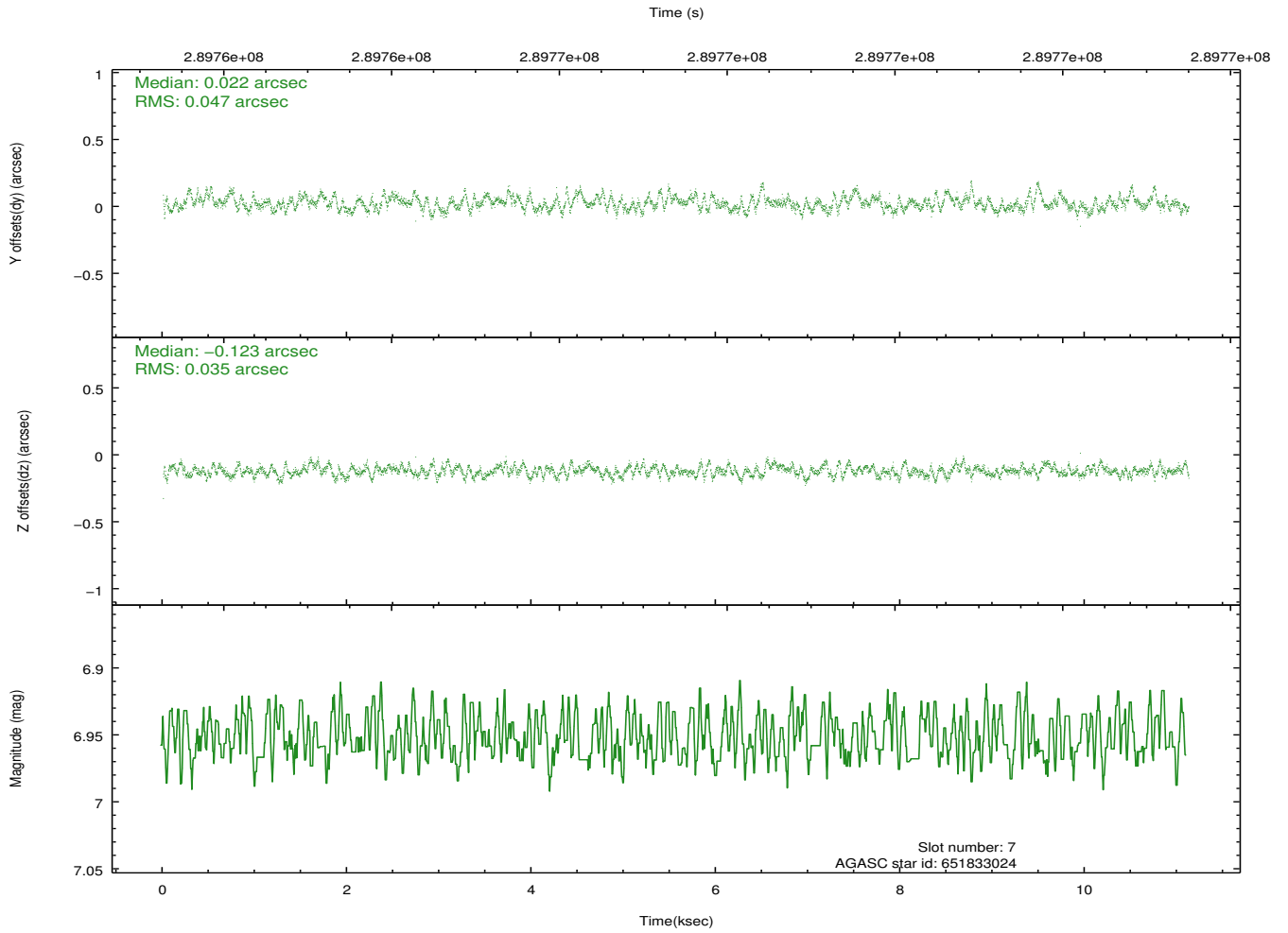
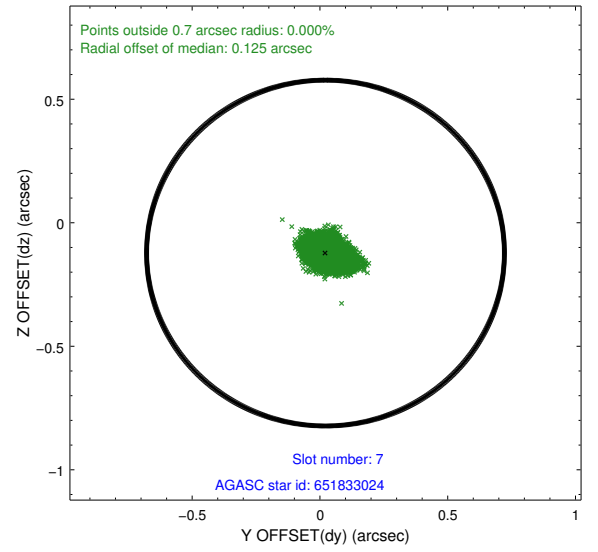
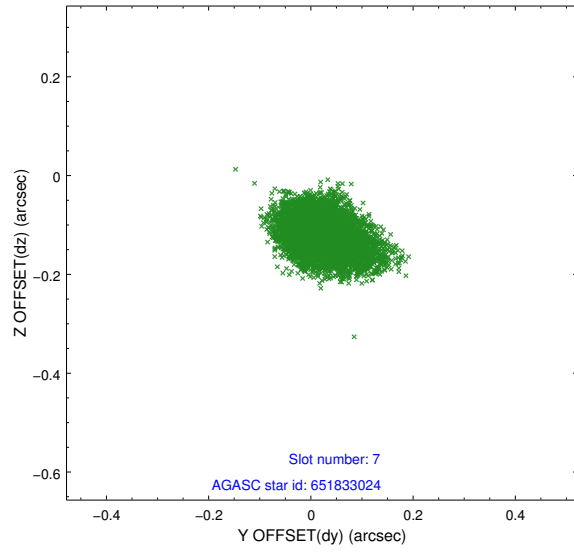


## 2.4.4 Slot 6



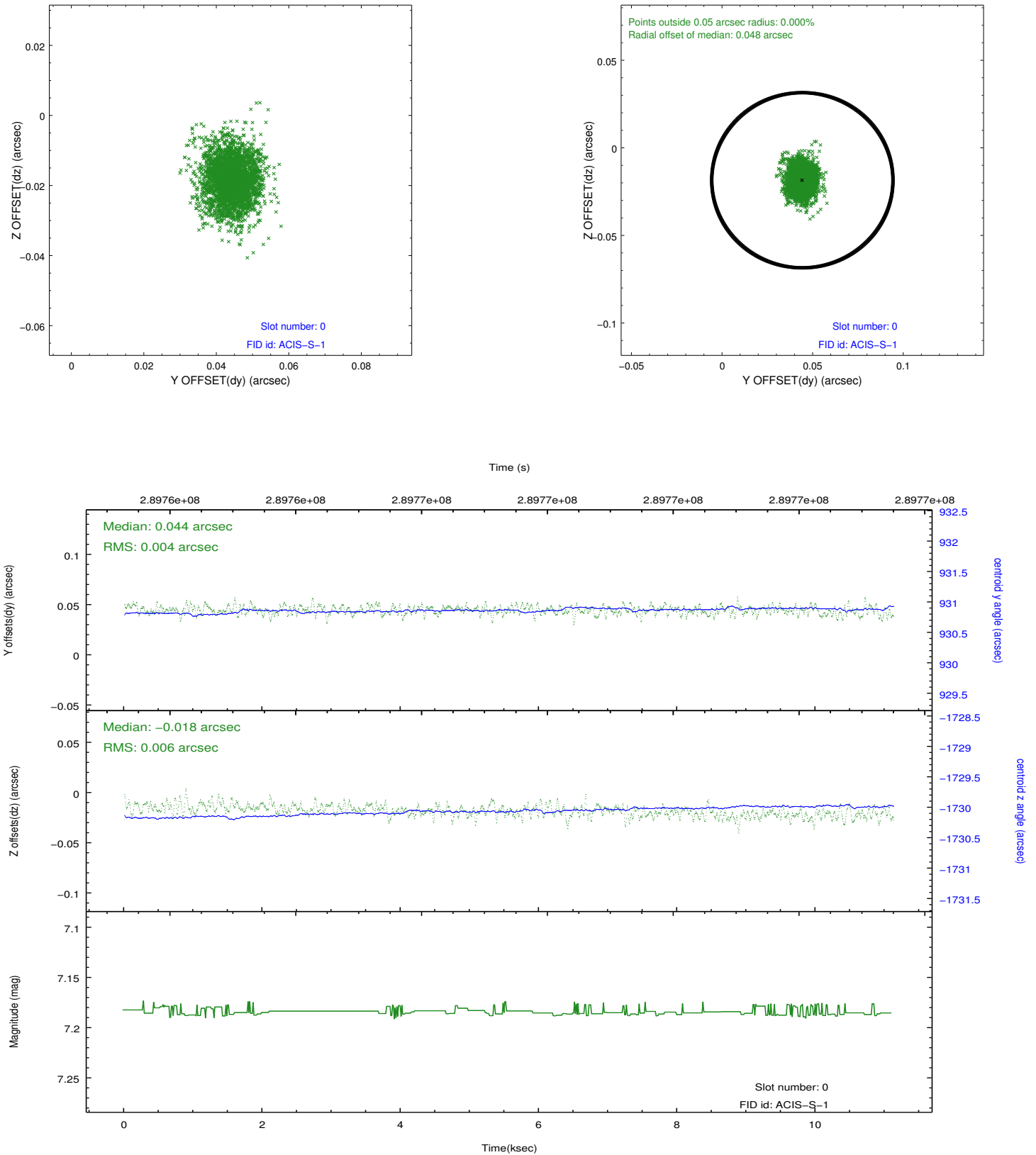


## 2.4.5 Slot 7

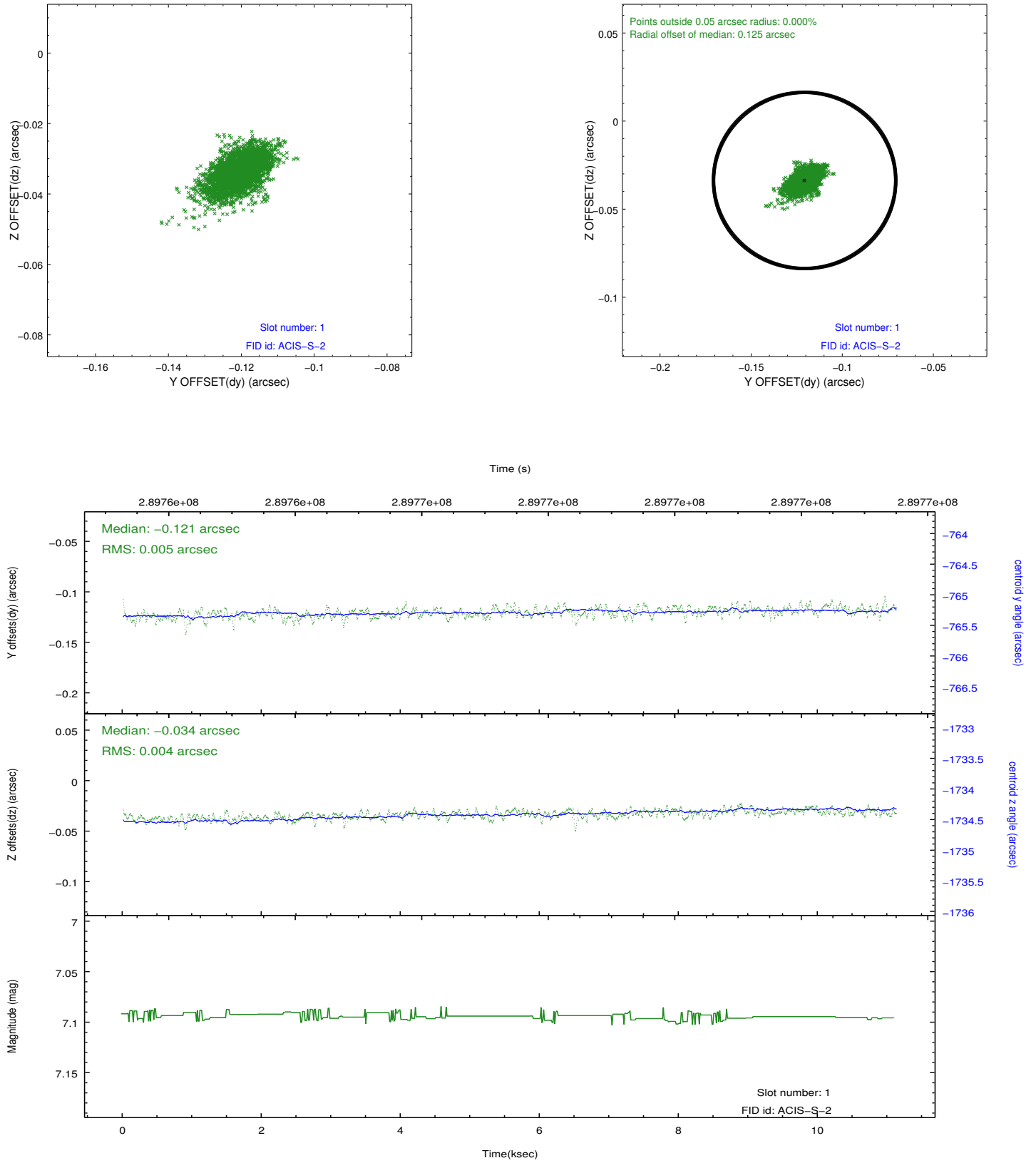


## 2.5 FID Slots

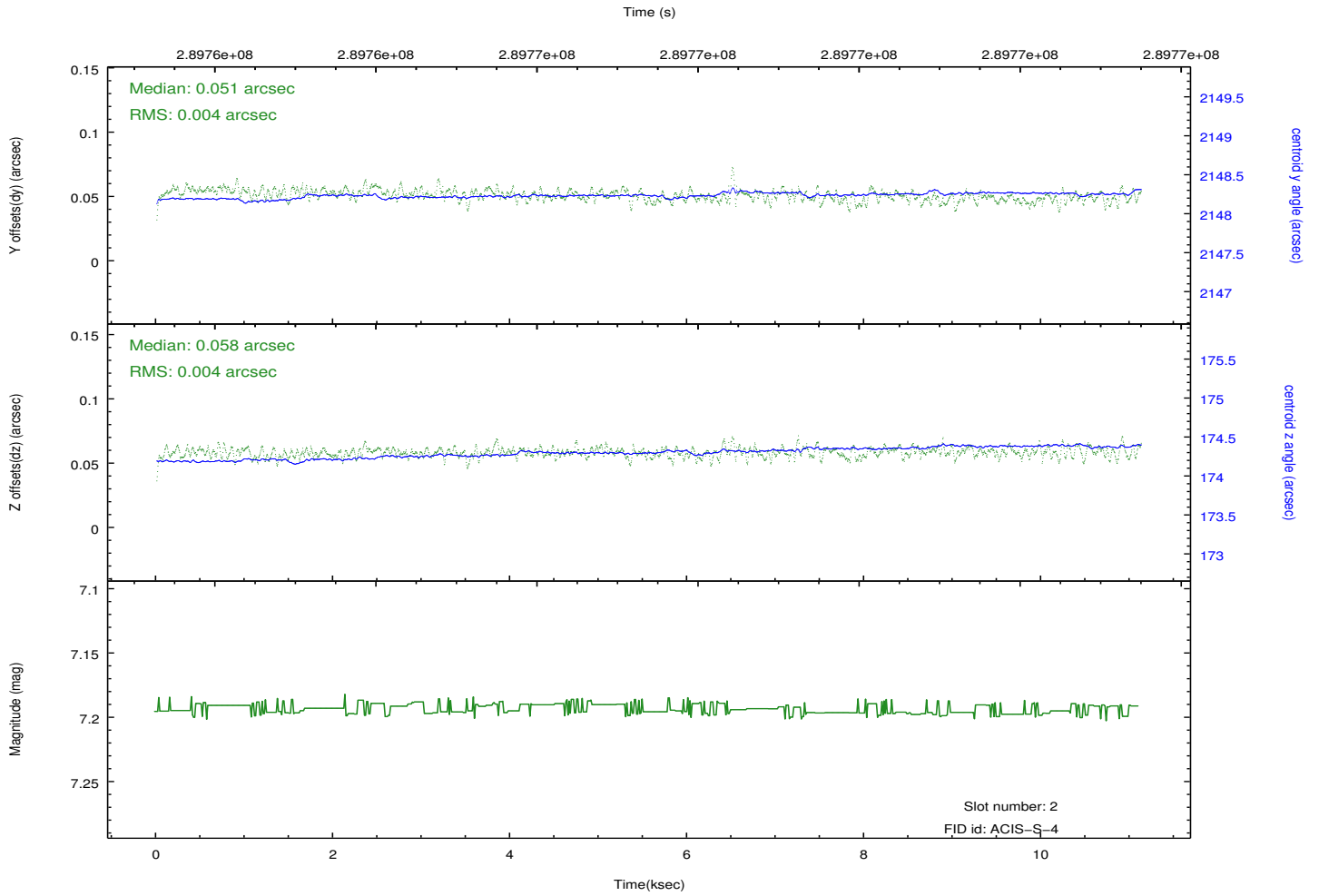
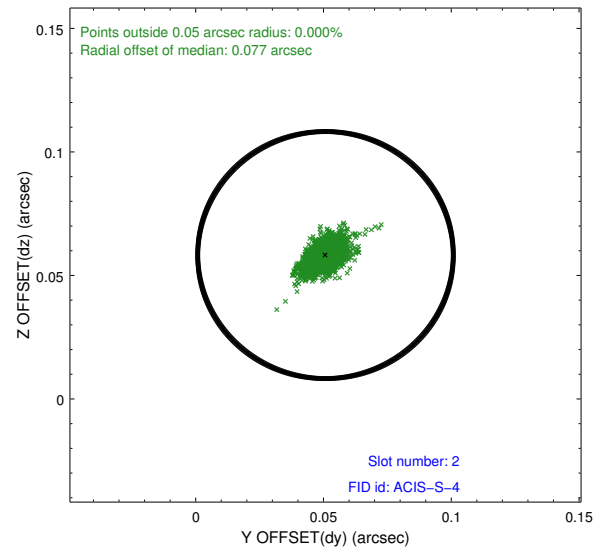
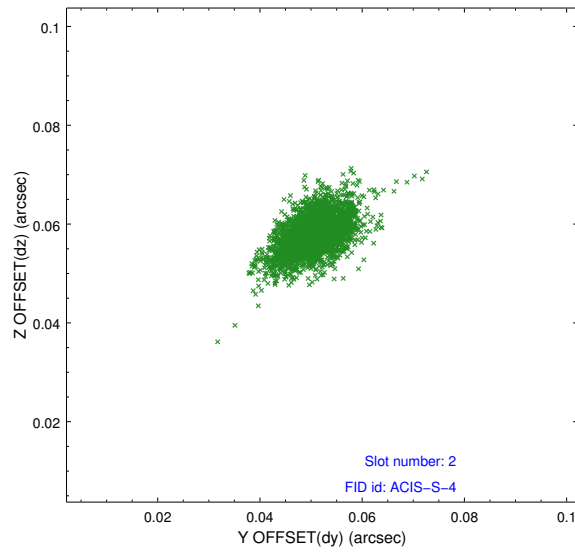
### 2.5.1 Slot 0



## 2.5.2 Slot 1



### 2.5.3 Slot 2



## A Summary

### A.1 Status

V&V Scientist	Beth Sundheim
V&V Date (YYYY-MM-DD)	2012.04.22
V&V Edition	1
V&V Disposition and Status	OK
V&V Charge Time	10.9368

### A.2 Comments