

V&V Reference Report

L2 ASCDS Version : 8.4.4

Observation 9719 - L2 Version 3
Chandra X-Ray Center

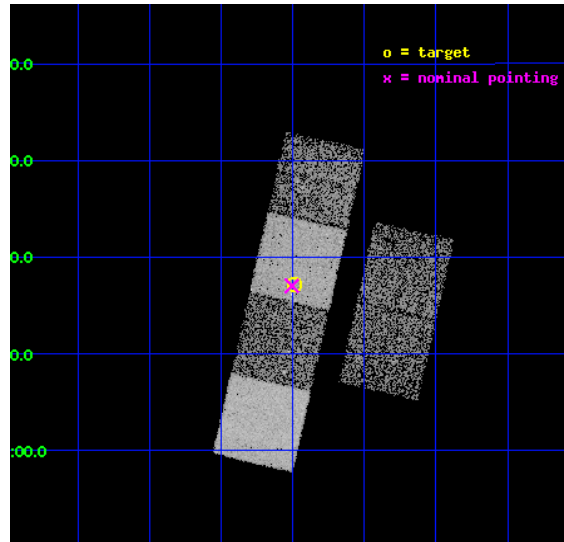
L2 Processing Date : May 2 2012

Contents

1	Front	2
2	OBI	3
2.1	OBI	3
2.1.1	Images	3
2.1.2	Bias	3
2.1.3	Parameters	4
2.1.4	Events	4
2.2	Compared Parameters	5
2.3	Aspect	6
2.4	Star Slots	9
2.4.1	Slot 3	9
2.4.2	Slot 4	10
2.4.3	Slot 5	11
2.4.4	Slot 6	12
2.4.5	Slot 7	13
2.5	FID Slots	14
2.5.1	Slot 0	14
2.5.2	Slot 1	15
2.5.3	Slot 2	16
A	Summary	17
A.1	Status	17
A.2	Comments	17

1 Front

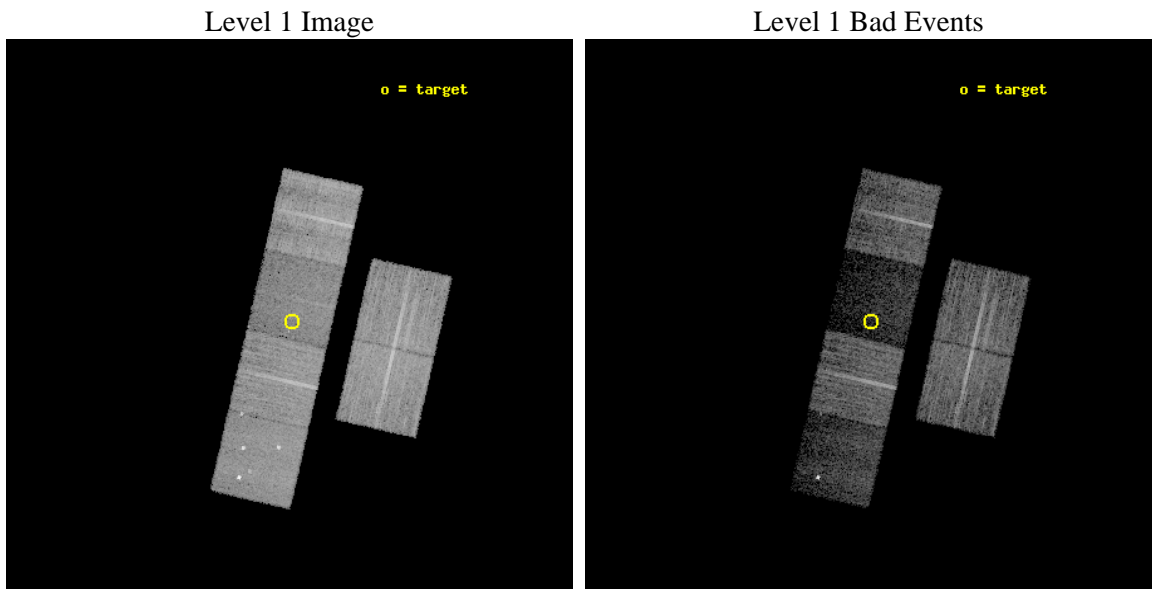
seq_num	701531	Sequence number
obs_id	9719	Observation id
title	Rapid Follow-Up Observations of Tidal Disruption Events Discovered in the GALEX Deep Imaging Survey	Proposal title
observer	Dr. Suvi Gezari	Principal investigator
object	Tidal Disruption Event	Source name
dtcycle	0	
cycle	P	events from which exps? Prim/Second/Both
ra_targ	352.997917	Observer's specified target RA [deg]
dec_targ	0.287389	Observer's specified target Dec [deg]
ra_nom	353.00133908938	Nominal RA [deg]
dec_nom	0.28395373433984	Nominal Dec [deg]
roll_nom	282.90819670575	Nominal Roll [deg]
revision	3	Processing version of data
ontime	8153.5999696851	Sum of GTIs [s]
livetime	8050.3541773604	Livetime [s]
ontime2	8153.5999696851	Sum of GTIs [s]
ontime3	8153.5999696851	Sum of GTIs [s]
ontime5	8153.5999696851	Sum of GTIs [s]
ontime6	8153.5999696851	Sum of GTIs [s]
ontime7	8153.5999696851	Sum of GTIs [s]
ontime8	8153.5999696851	Sum of GTIs [s]
l2events	64609	Number of level 2 events



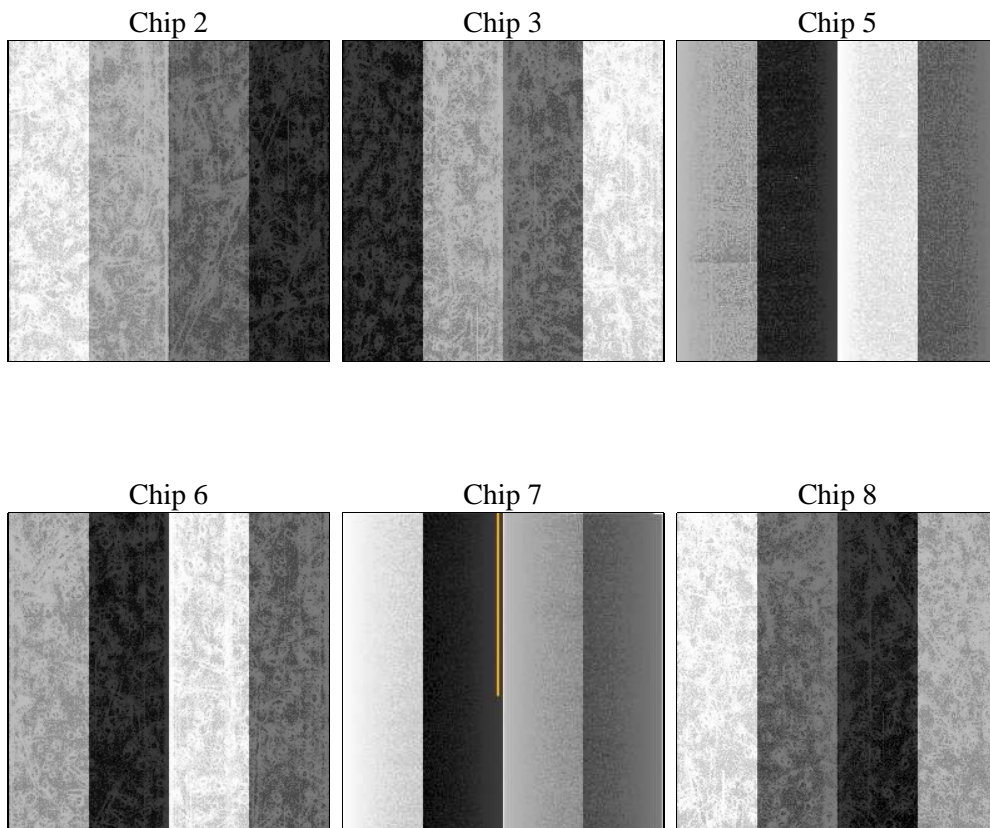
2 OBI

2.1 OBI

2.1.1 Images



2.1.2 Bias



2.1.3 Parameters

obi_num	0	Obi number	sched_exp_time	8000.000000	[s] Scheduled observation exposure time
ascdsver	8.4.4	Processing system revision	ontime	8153.5999696851	Sum of GTIs [s]
caldsver	4.4.9	 	ontime2	8153.5999696851	Sum of GTIs [s]
date	2012-05-02T14:03:57	Date and time of file creation	ontime3	8153.5999696851	Sum of GTIs [s]
revision	3	Processing version of data	ontime5	8153.5999696851	Sum of GTIs [s]
			ontime6	8153.5999696851	Sum of GTIs [s]
			ontime7	8153.5999696851	Sum of GTIs [s]
			ontime8	8153.5999696851	Sum of GTIs [s]
			l1events	332310	Number of level 1 events

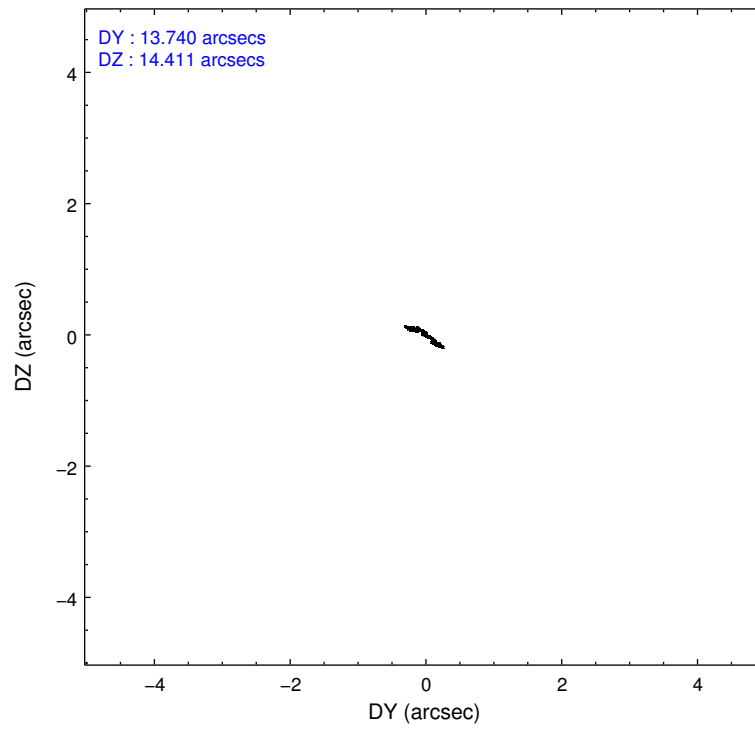
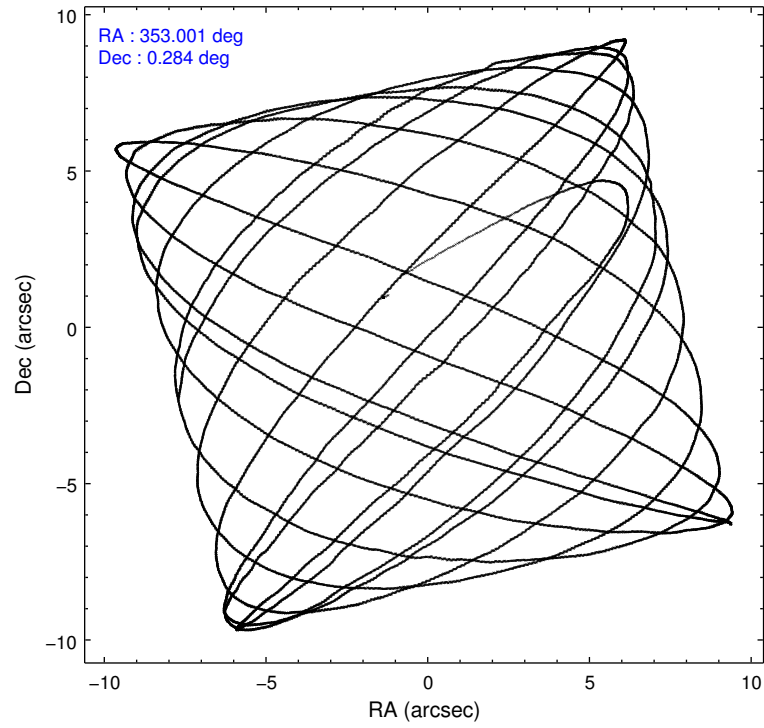
2.1.4 Events

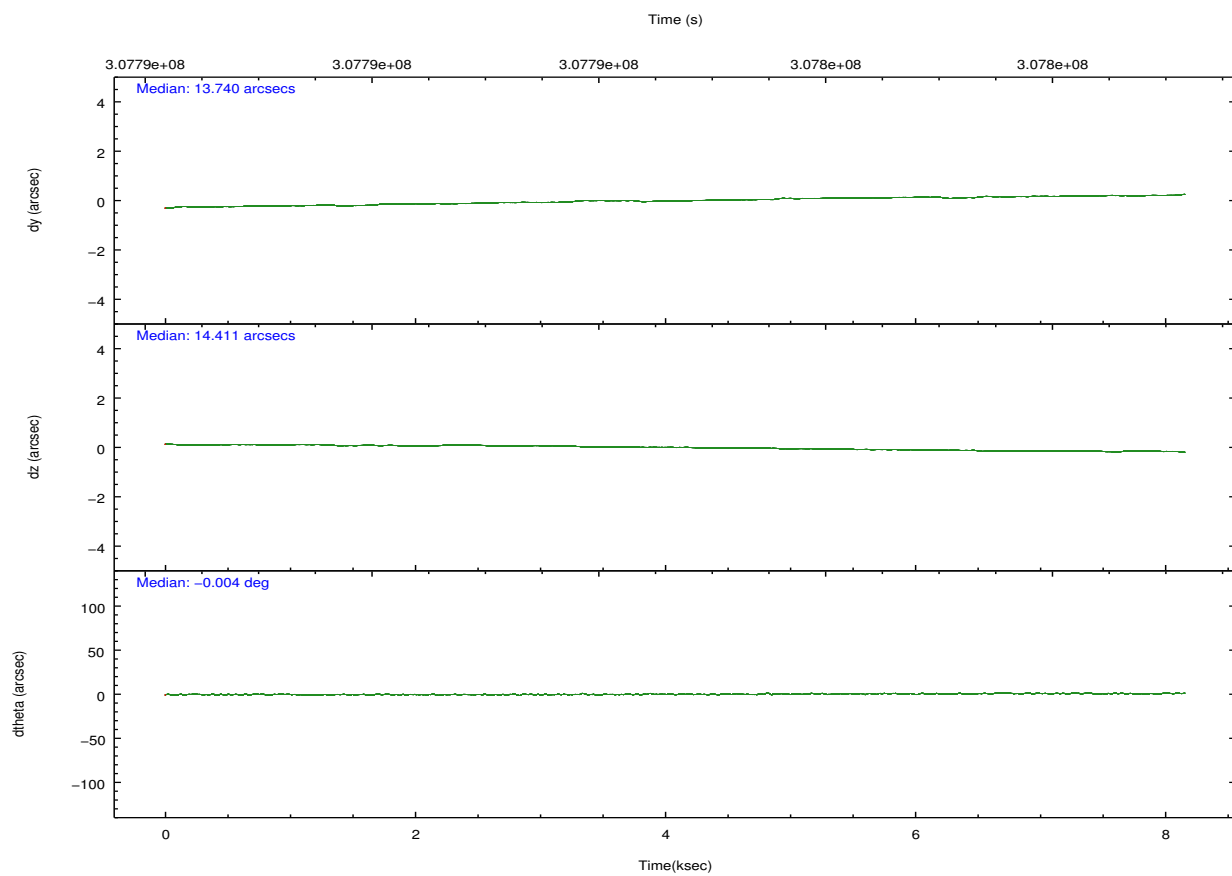
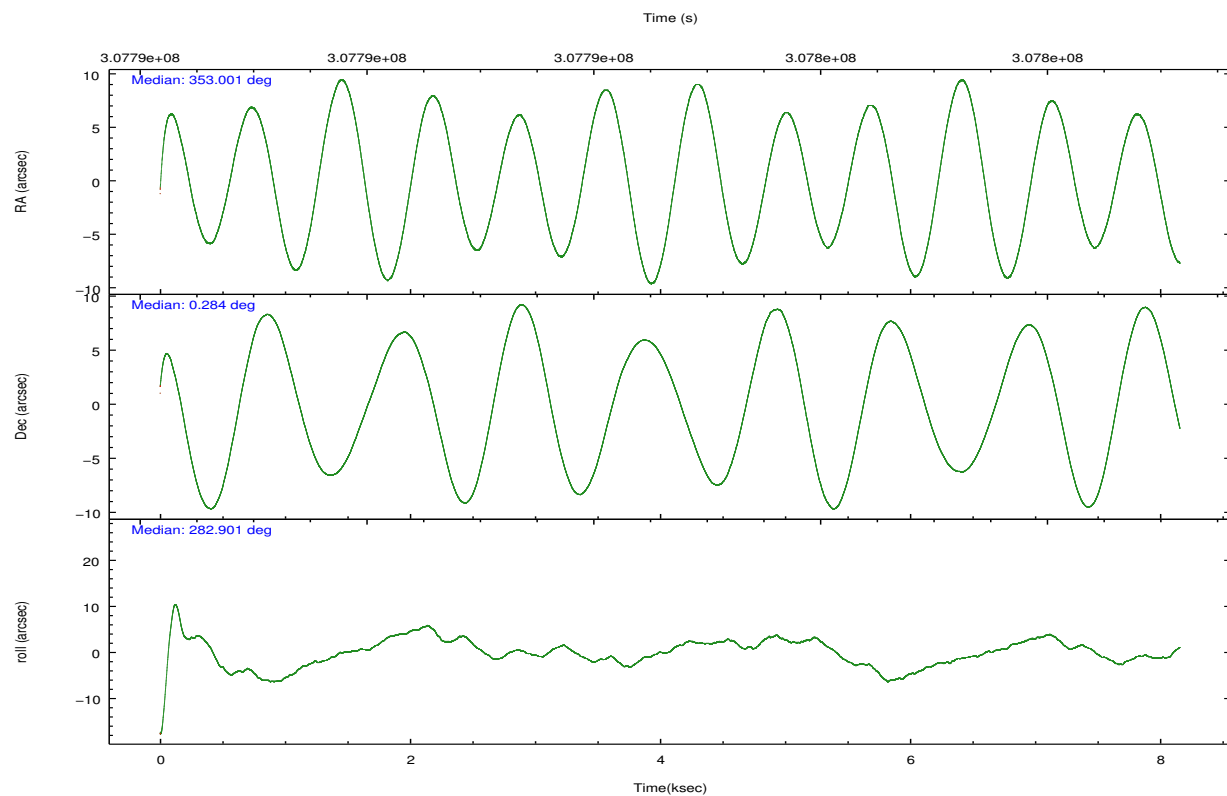
	ccd 2	ccd 3	ccd 5	ccd 6	ccd 7	ccd 8		ccd 2	ccd 3	ccd 5	ccd 6	ccd 7	ccd 8
level 1 events	62503	57485	54580	57249	33944	66549	grade 0 events	2335	2031	5844	2294	2619	5390
rejected events	57352	52856	21956	51895	14167	48326		3%	3%	10%	4%	7%	8%
rejected %	91%	91%	40%	90%	41%	72%	grade 1 events	35	30	266	22	77	50
								0%	0%	0%	0%	0%	0%
							grade 2 events	1190	947	10460	1172	4781	4174
								1%	1%	19%	2%	14%	6%
							grade 3 events	475	533	1686	562	2051	2000
								0%	0%	3%	0%	6%	3%
							grade 4 events	500	494	1545	574	2009	1865
								0%	0%	2%	1%	5%	2%
							grade 5 events	882	1066	4145	1114	3405	1884
								1%	1%	7%	1%	10%	2%
							grade 6 events	736	703	13571	840	8677	4992
								1%	1%	24%	1%	25%	7%
							grade 7 events	56350	51681	17063	50671	10325	46194
								90%	89%	31%	88%	30%	69%

2.2 Compared Parameters

Parameter	Planned	Actual	Parameter	Planned	Actual
Instrument	ACIS	ACIS	Obspar format version number	7	7
Detector	ACIS-235678	ACIS-235678	Obspar file type	PREDICTED	ACTUAL
Grating	NONE	NONE	Obspar update status	NONE	UPDATED
Data mode	VFAINT	VFAINT	CCD I0 on	N	N
Observation mode	POINTING	POINTING	CCD I1 on	N	N
[deg] Pointing RA	352.982431	353.0013390893834	CCD I2 on	O1	Y
[deg] Pointing Dec	0.303709	0.2839537343398401	CCD I3 on	O2	Y
[deg] Pointing Roll	282.751711	282.9081967057537	CCD S0 on	N	N
[mm] SIM focus pos	-0.684267	-0.6828225247311905	CCD S1 on	Y	Y
[mm] SIM defocus	0	0.001444936568705701	CCD S2 on	Y	Y
[mm] SIM translation stage pos	-190.132523	-190.1400660498719	CCD S3 on	Y	Y
[mm] SIM translation stage offset	0	0.00754346686406393	CCD S4 on	O3	Y
[s] Observation start time (MET)	307790747.184000	307789643.26647	CCD S5 on	N	N
Observation start date	2007-10-03T09:24:42	2007-10-03T09:07:23	Number of optional ACIS chips dropped	0	0
[s] Observation end time (MET)	307798747.184000	307799959.89196	On-chip summing requested	N	N
Observation end date	2007-10-03T11:38:02	2007-10-03T11:59:19	Subarray requested	NONE	NONE
Read mode	TIMED	TIMED	Alternating exposures requested	N	N
			[s] Primary exposure time	0.000000	3.2

2.3 Aspect



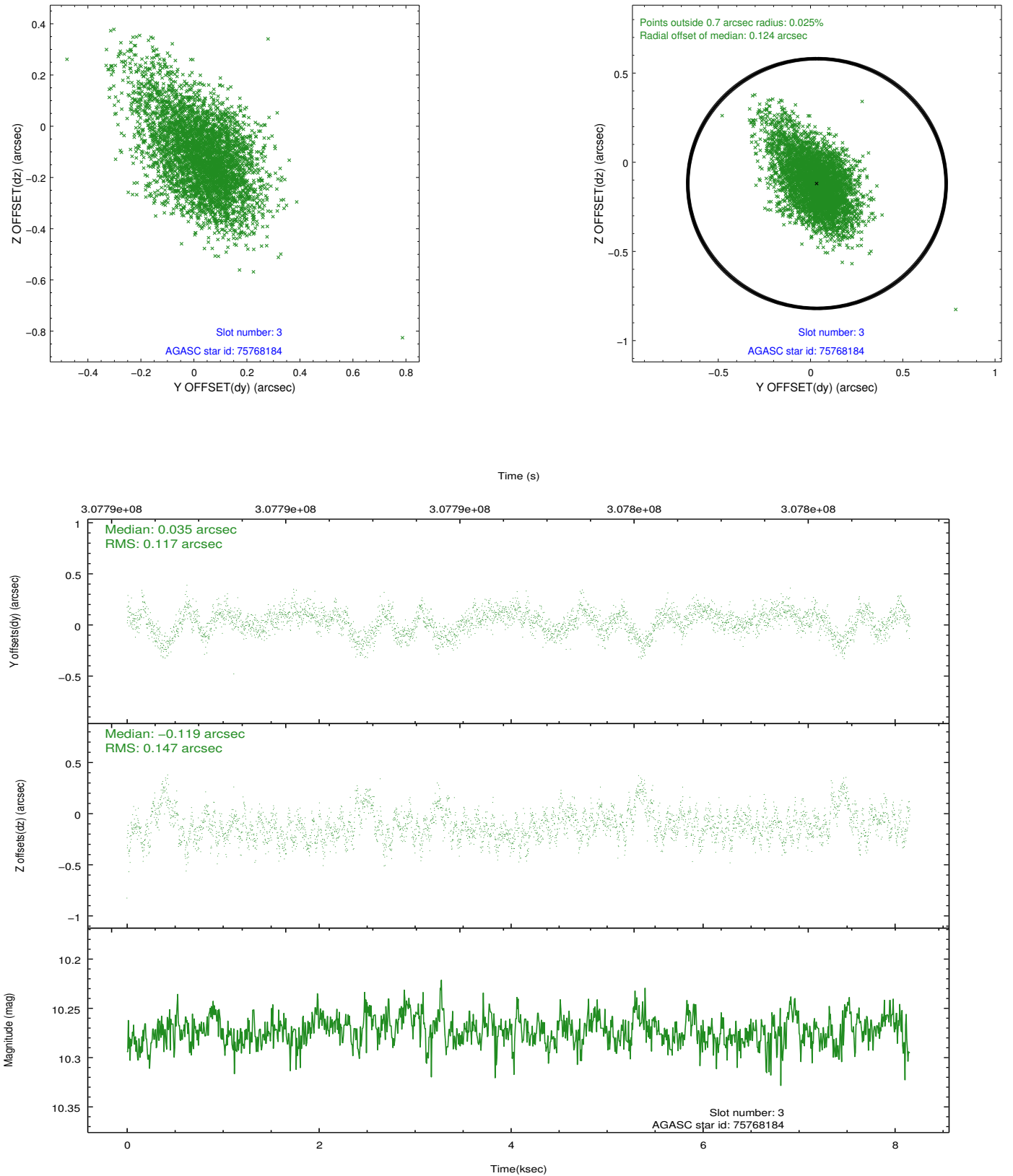


Slot Statistics

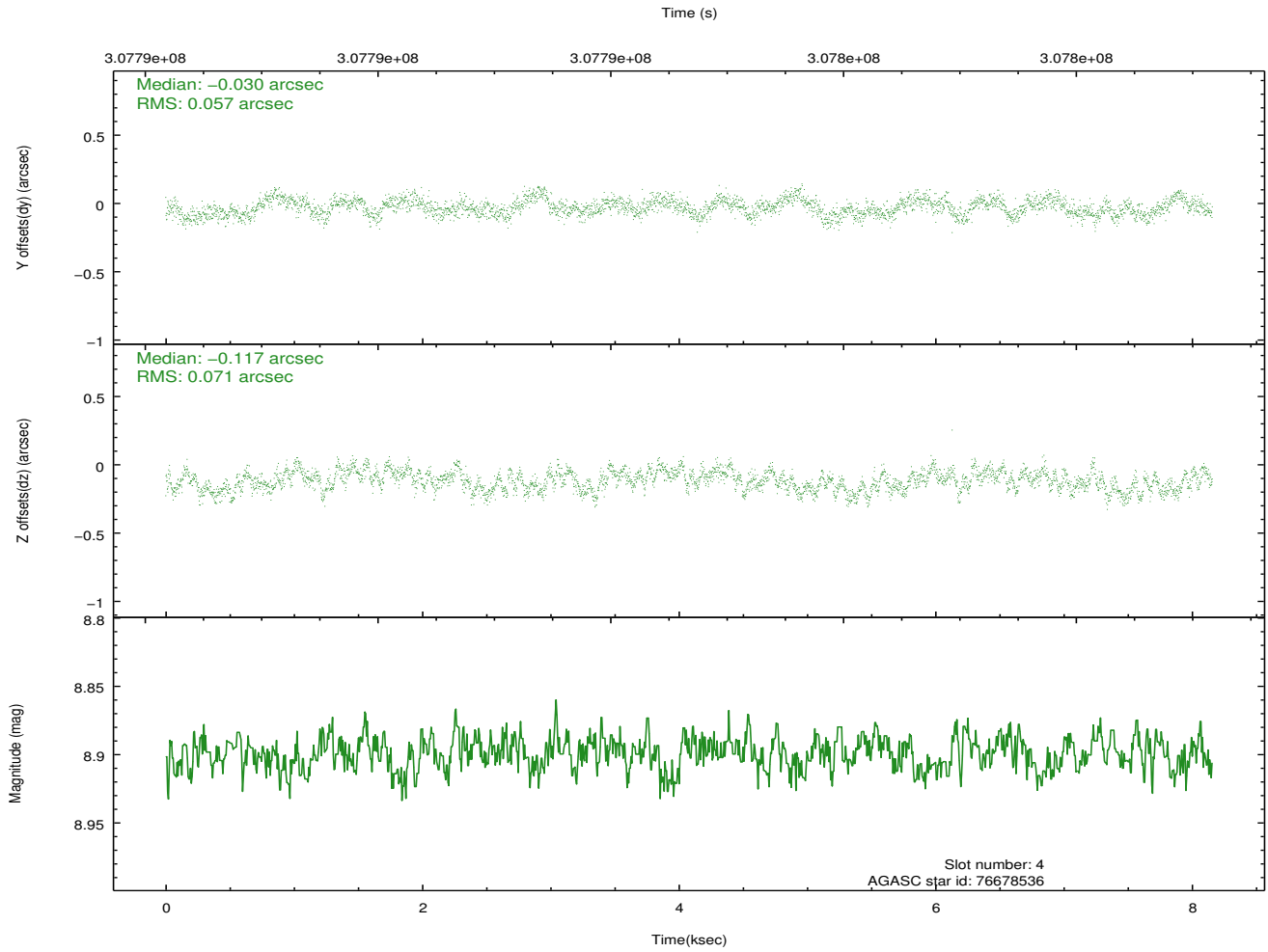
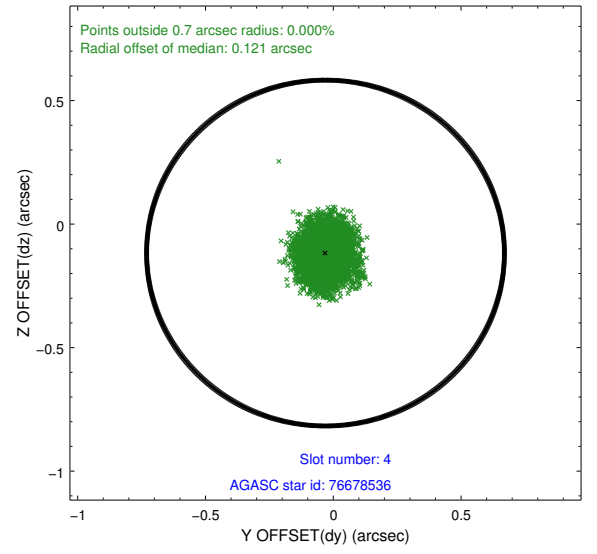
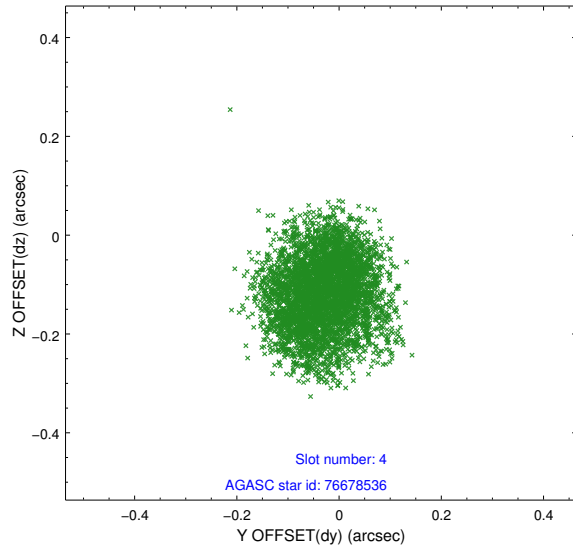
slot	status	id	mag	n_pts	med_dy	med_dz	dr1	dr2	ra	dec	mean_y	mean_z
0	FID	ACIS-S-2	7.09	1990	-0.056	-0.040	0.008	0.013	0.000000	0.000000	-766.71	-1735.81
1	FID	ACIS-S-4	7.19	1990	0.181	0.038	0.009	0.015	0.000000	0.000000	2146.48	172.06
2	FID	ACIS-S-5	7.22	1990	-0.157	0.011	0.010	0.016	0.000000	0.000000	-1818.79	166.46
3	GUIDE	75768184	10.27	3969	0.035	-0.119	0.186	0.344	352.363704	0.298036	-470.83	-2176.93
4	GUIDE	76678536	8.90	3978	-0.030	-0.117	0.099	0.151	353.237558	0.180446	635.79	797.50
5	GUIDE	76685264	9.68	3971	0.017	0.126	0.136	0.216	353.301878	0.237362	487.24	1069.36
6	GUIDE	688259800	9.78	3974	0.078	0.096	0.145	0.232	353.657846	-0.137055	2085.29	2022.06
7	GUIDE	688265896	9.16	3974	-0.101	0.016	0.147	0.243	352.587516	-0.177872	1378.36	-1768.52

2.4 Star Slots

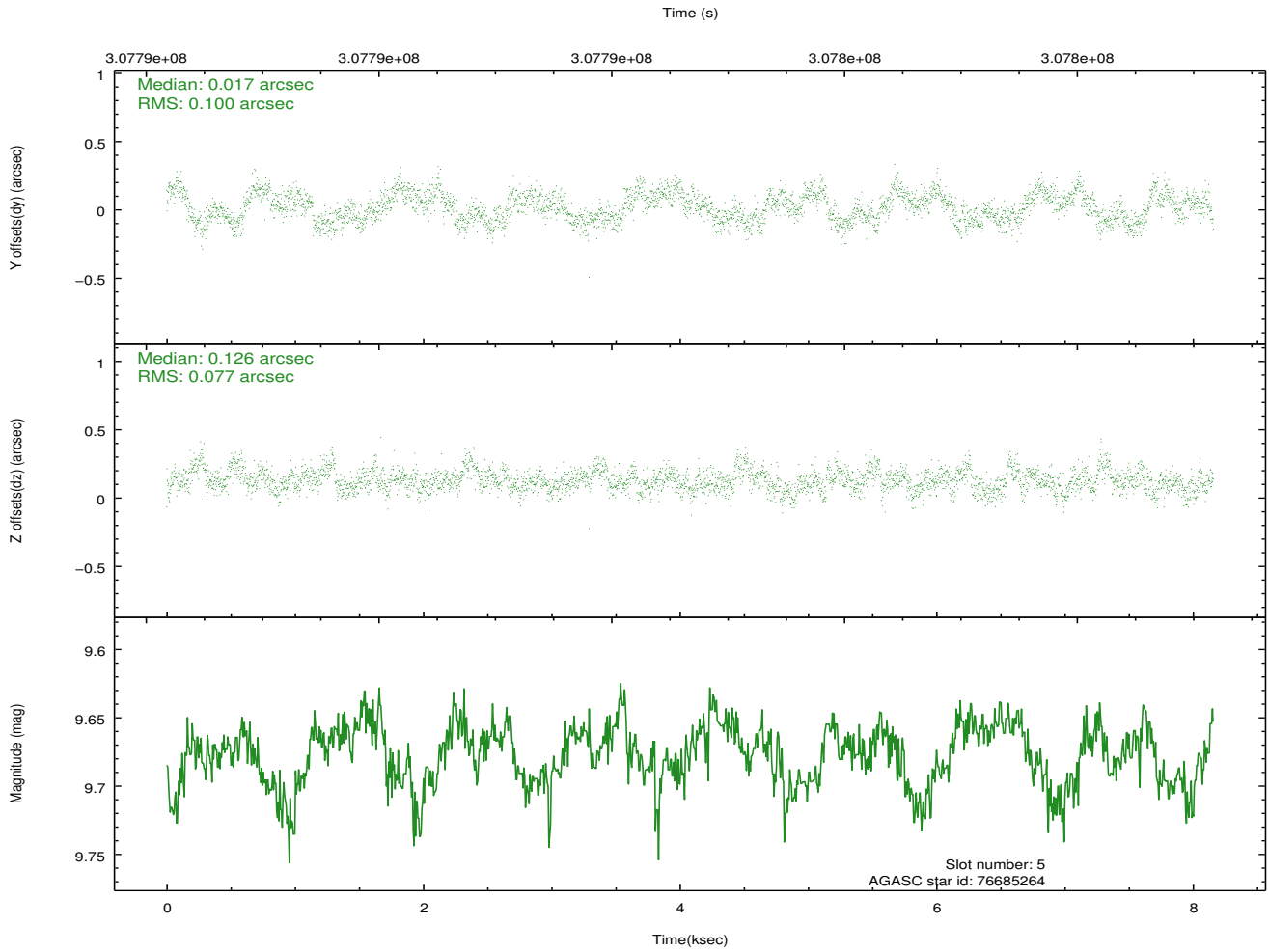
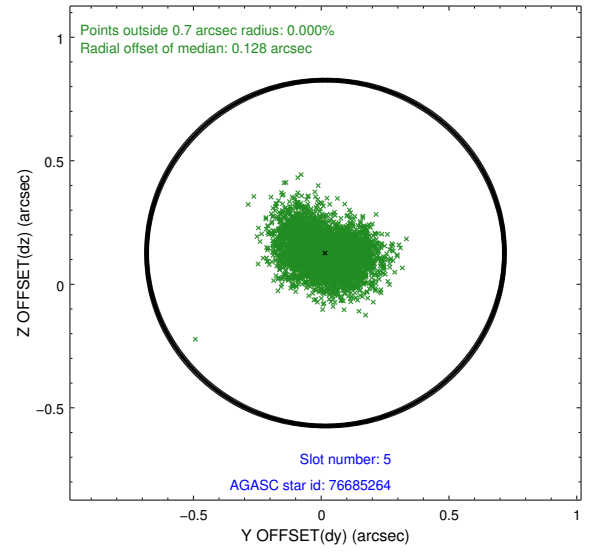
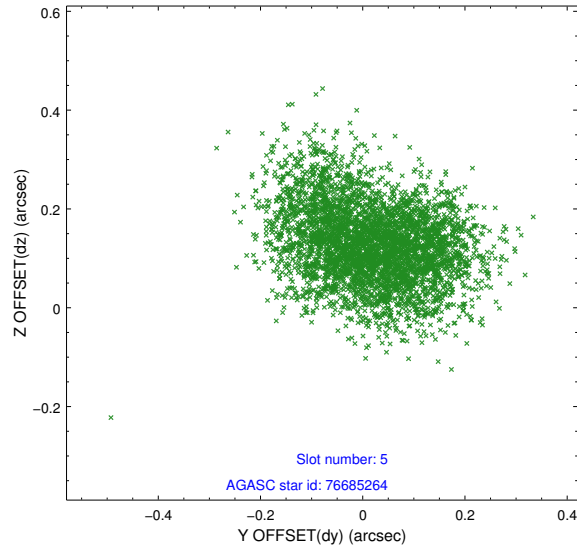
2.4.1 Slot 3



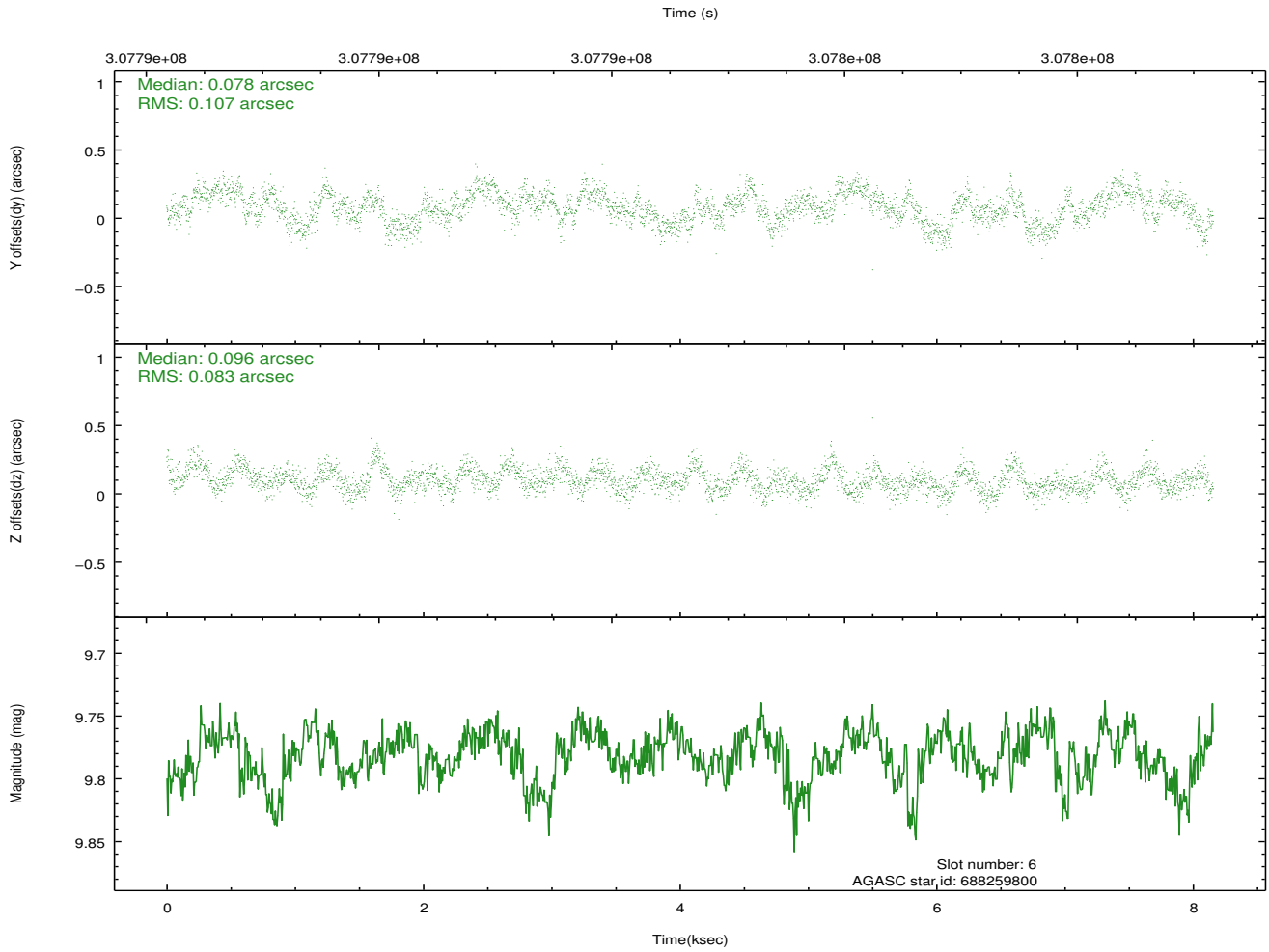
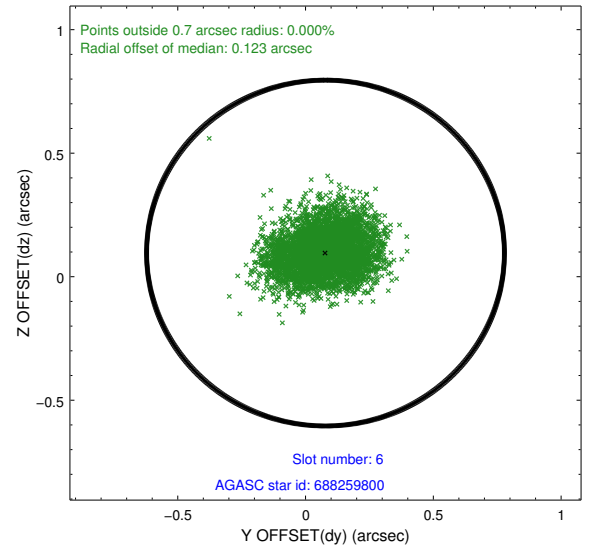
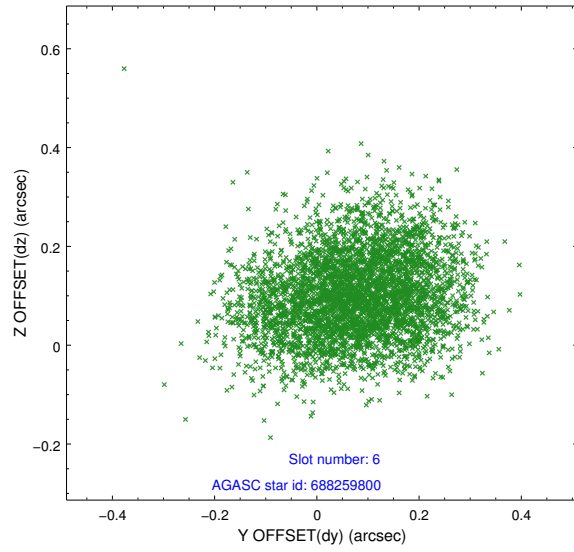
2.4.2 Slot 4



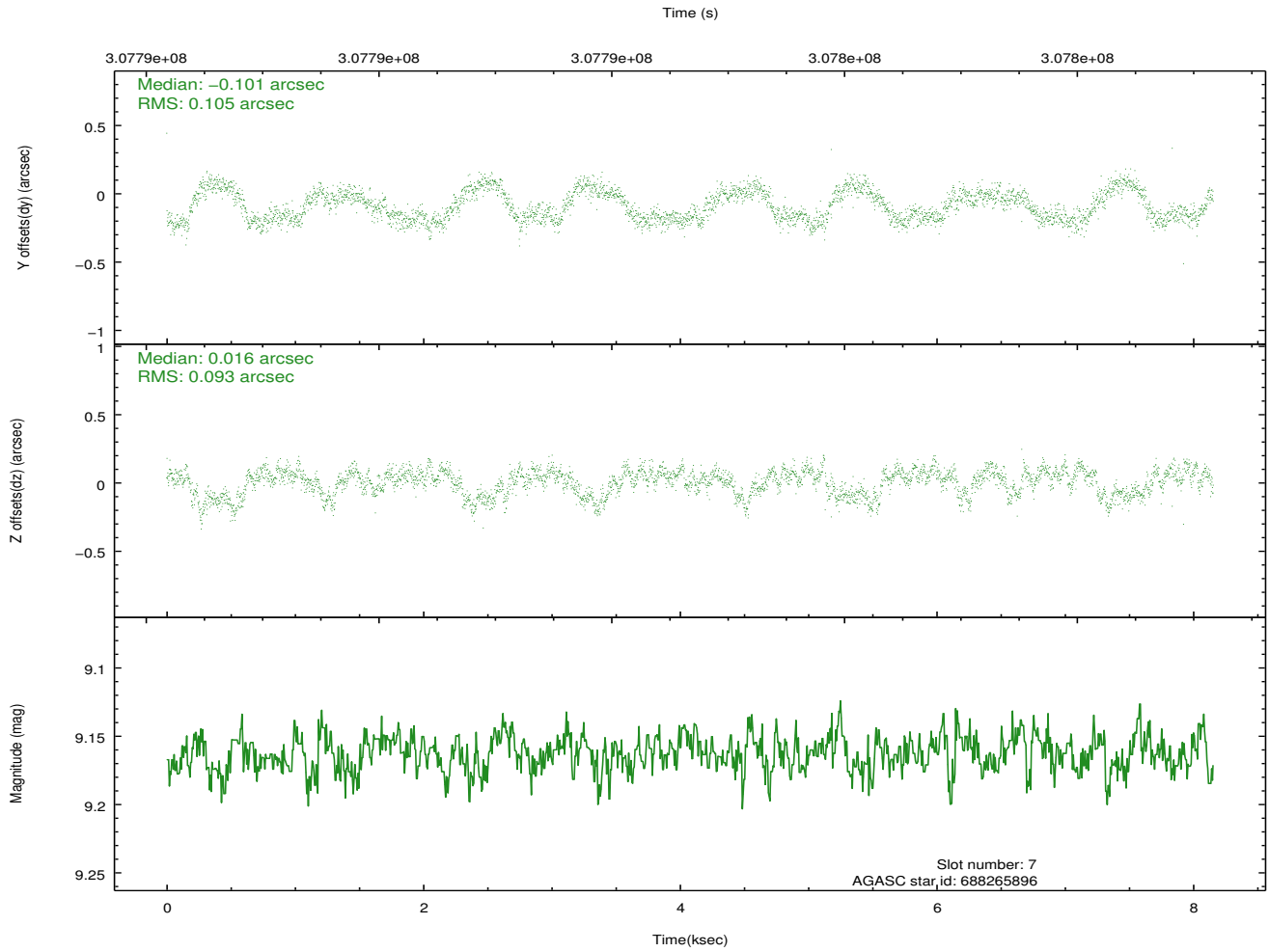
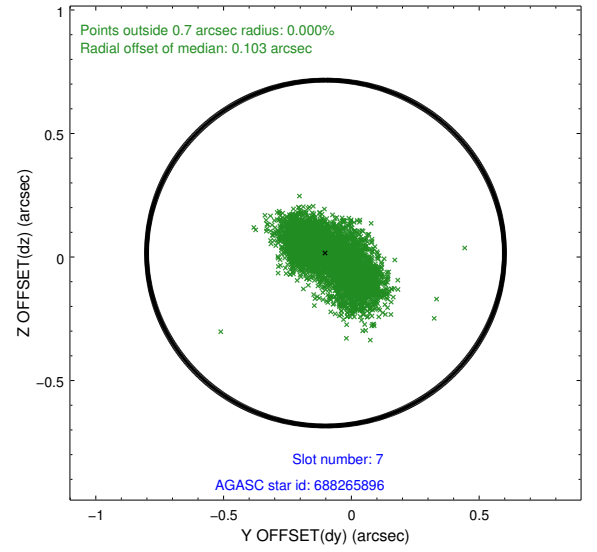
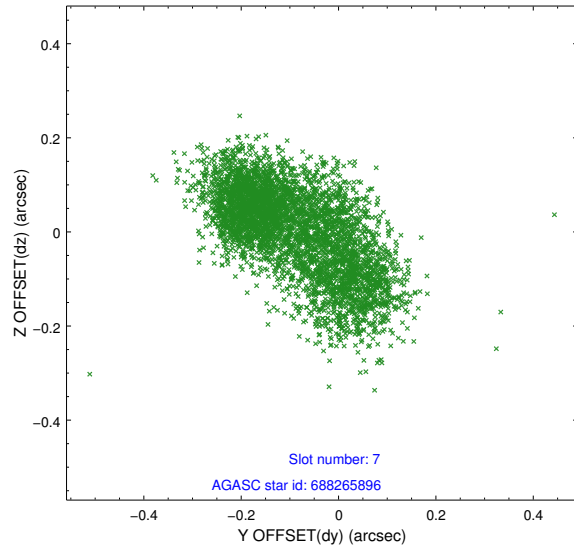
2.4.3 Slot 5



2.4.4 Slot 6

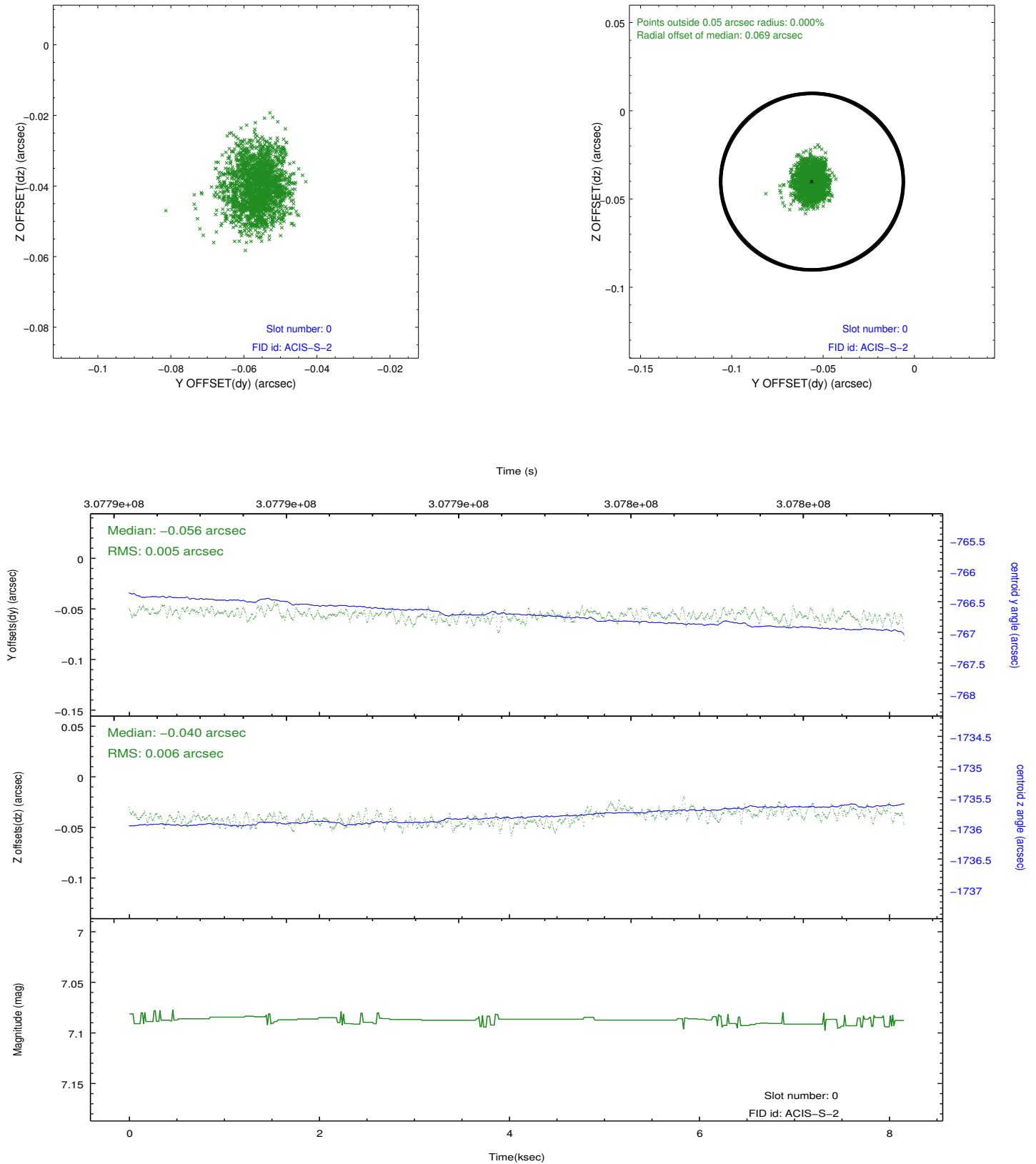


2.4.5 Slot 7

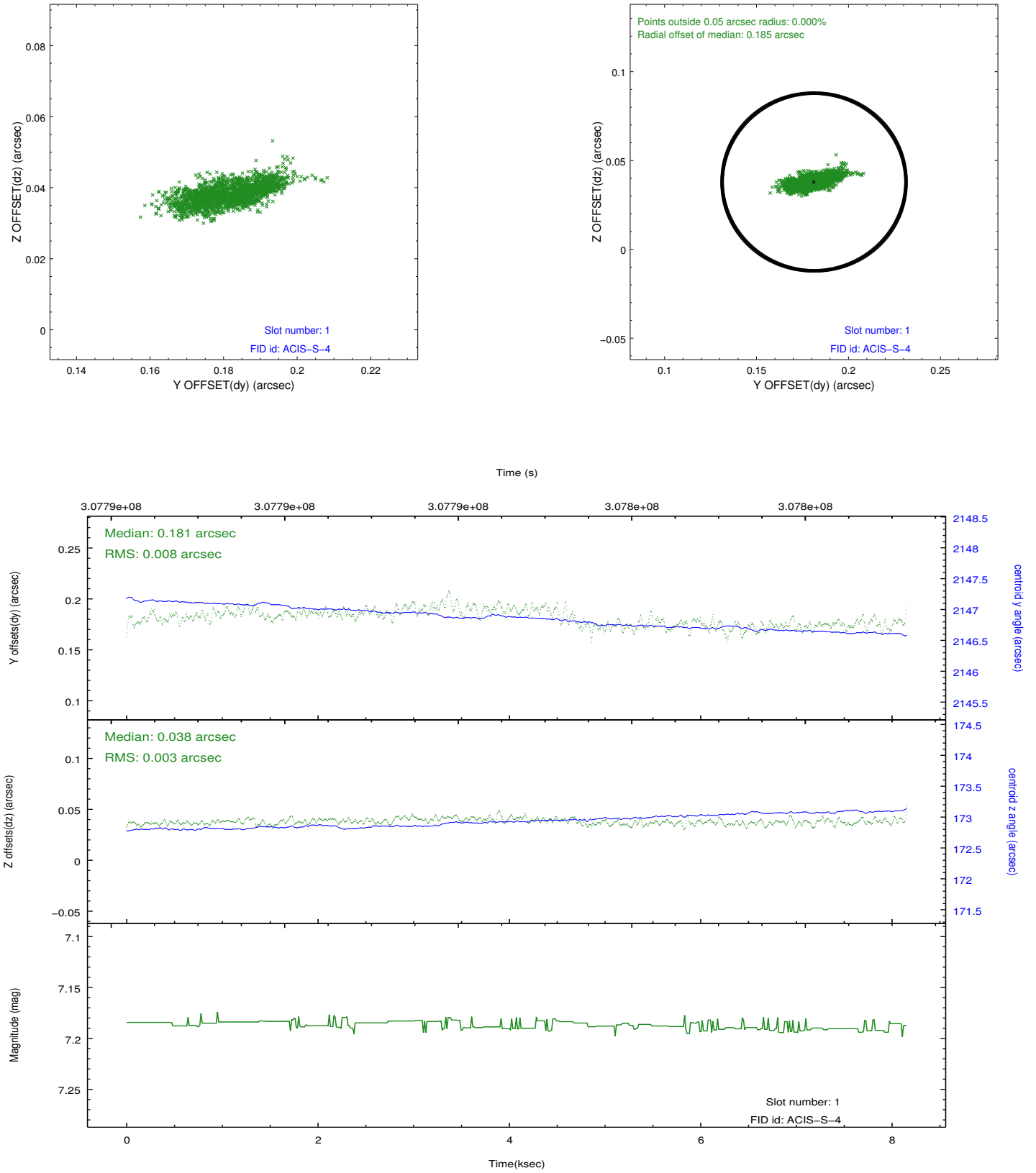


2.5 FID Slots

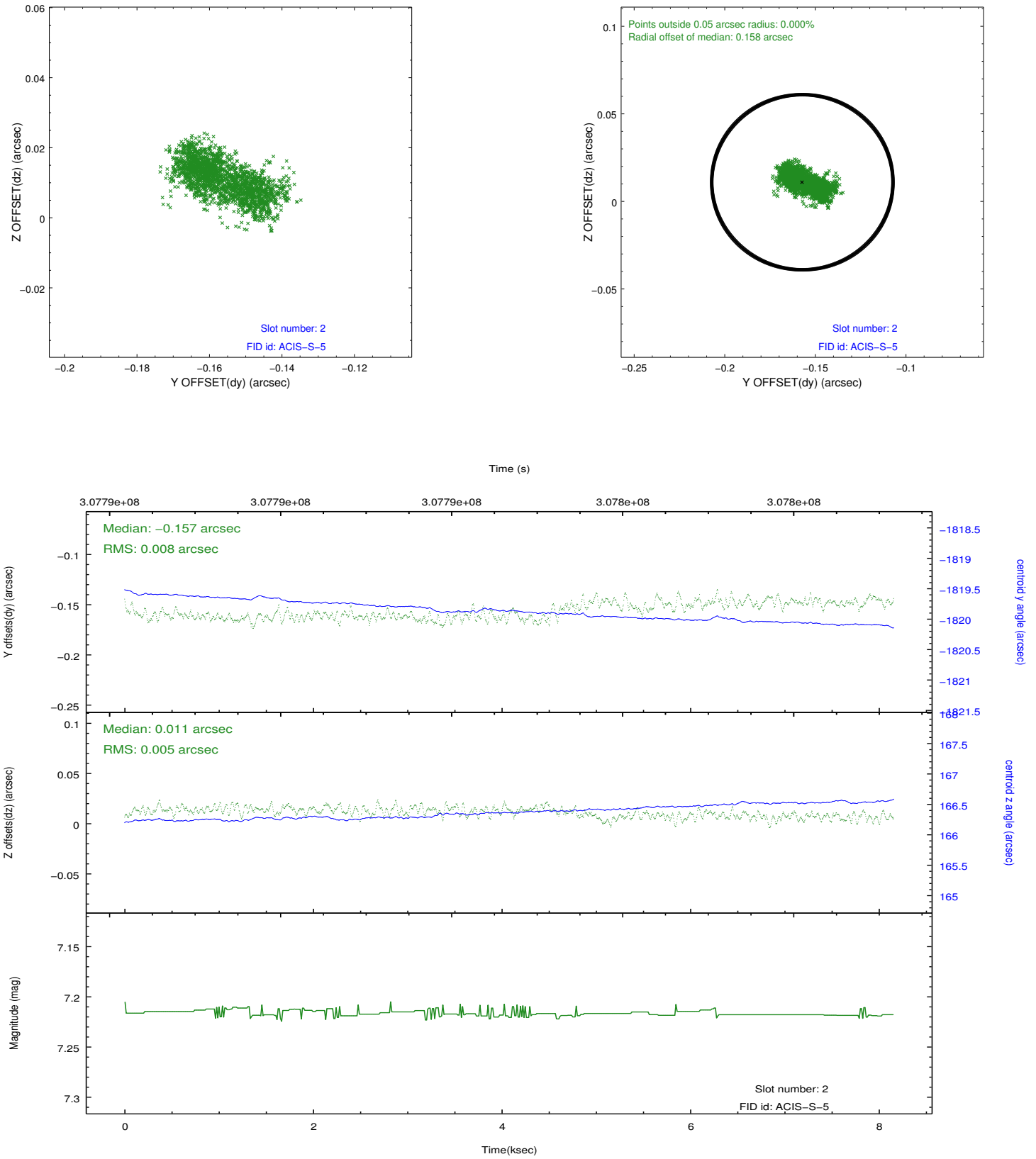
2.5.1 Slot 0



2.5.2 Slot 1



2.5.3 Slot 2



A Summary

A.1 Status

V&V Scientist	Jen Lauer
V&V Date (YYYY-MM-DD)	2012.05.04
V&V Edition	1
V&V Disposition and Status	OK
V&V Charge Time	8.1536

A.2 Comments

A spatial region of the original bias map for CCD = 6 suffered from anomalously high data values. Pixels in the event data that were bias-corrected by one of the original affected bias pixels may have an apparent energy shift. While the change in energy is expected to be small (~ 20 eV), it depends on many parameters that have not yet been fully explored for this bias anomaly. The bias map for CCD = 6 has been reconstructed for this processing to remove this anomaly using scaled data from a comparable bias map from another observation. The pixels affected by the anomaly are bounded by sky coords:
(353.08463,0.22686), (353.08399,0.22965), (352.94792,0.19834), (352.94857,0.19554)