

# V&V Reference Report

## L2 ASCDS Version : 8.4.4

Observation 7872 - L2 Version 2  
Chandra X-Ray Center

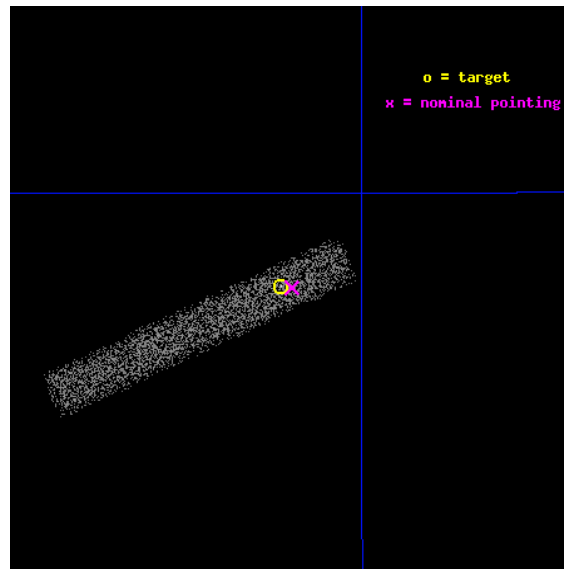
L2 Processing Date : Apr 25 2012

## Contents

<b>1</b>	<b>Front</b>	<b>2</b>
<b>2</b>	<b>OBI</b>	<b>3</b>
2.1	OBI . . . . .	3
2.1.1	Images . . . . .	3
2.1.2	Bias . . . . .	3
2.1.3	Parameters . . . . .	4
2.1.4	Events . . . . .	4
2.2	Compared Parameters . . . . .	5
2.3	Aspect . . . . .	6
2.4	Star Slots . . . . .	9
2.4.1	Slot 3 . . . . .	9
2.4.2	Slot 4 . . . . .	10
2.4.3	Slot 5 . . . . .	11
2.4.4	Slot 6 . . . . .	12
2.4.5	Slot 7 . . . . .	13
2.5	FID Slots . . . . .	14
2.5.1	Slot 0 . . . . .	14
2.5.2	Slot 1 . . . . .	15
2.5.3	Slot 2 . . . . .	16
<b>A</b>	<b>Summary</b>	<b>17</b>
A.1	Status . . . . .	17
A.2	Comments . . . . .	17

# 1 Front

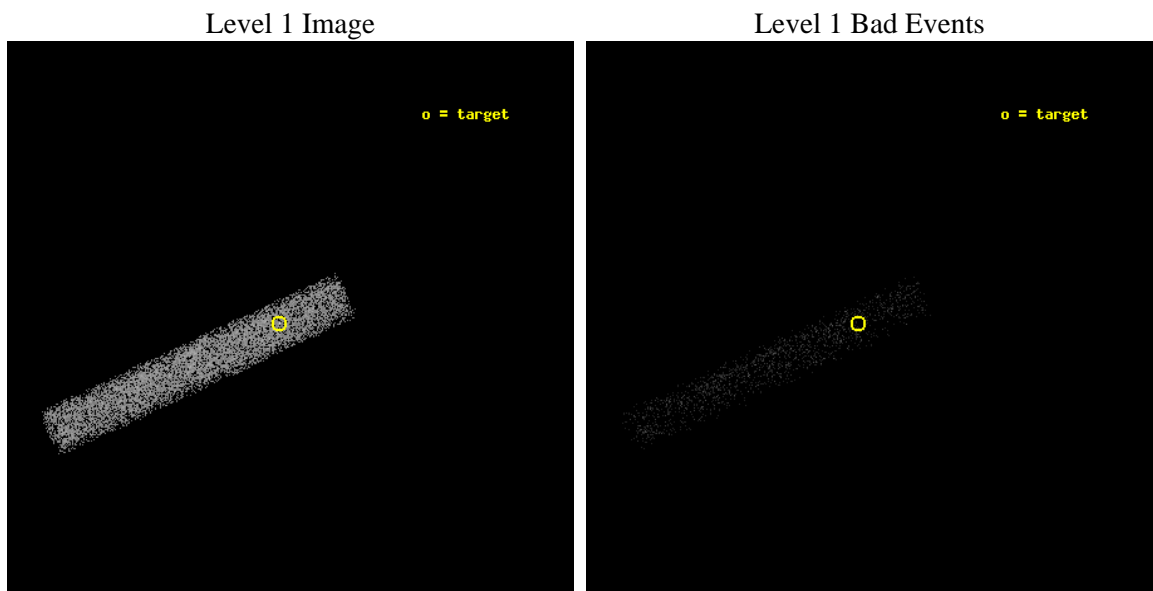
seq_num	701536	Sequence number
obs_id	7872	Observation id
title	Chandra Imaging of the Highest Redshift Relativistic Jets	Proposal
observer	Dr. C.C. Teddy Cheung	Principal investigator
object	J1754+6737	Source name
dtcycle	0	&#160
cycle	P	events from which exps? Prim/Second/Both
ra_targ	268.592917	Observer's specified target RA [deg]
dec_targ	67.626611	Observer's specified target Dec [deg]
ra_nom	268.58024748909	Nominal RA [deg]
dec_nom	67.626016120906	Nominal Dec [deg]
roll_nom	155.13605166957	Nominal Roll [deg]
revision	2	Processing version of data
ontime	7147.1995739937	Sum of GTIs [s]
livetime	6482.132753486	Livetime [s]
ontime7	7147.1995739937	Sum of GTIs [s]
l2events	5608	Number of level 2 events



## 2 OBI

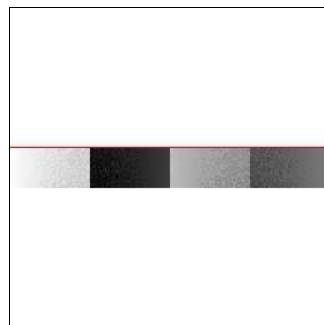
### 2.1 OBI

#### 2.1.1 Images



#### 2.1.2 Bias

Chip 7



### 2.1.3 Parameters

obi_num	0	Obi number	sched_exp_time	7000.000000	[s] Scheduled observation exposure time
ascdsver	8.4.4	Processing system revision	ontime	7147.1995739937	Sum of GTIs [s]
caldsver	4.4.9	&#160	ontime7	7147.1995739937	Sum of GTIs [s]
date	2012-04-25T09:15:38	Date and time of file creation	l1events	15339	Number of level 1 events
revision	2	Processing version of data			

### 2.1.4 Events

	<b>ccd 7</b>
level 1 events	15339
rejected events	9525
rejected %	62%

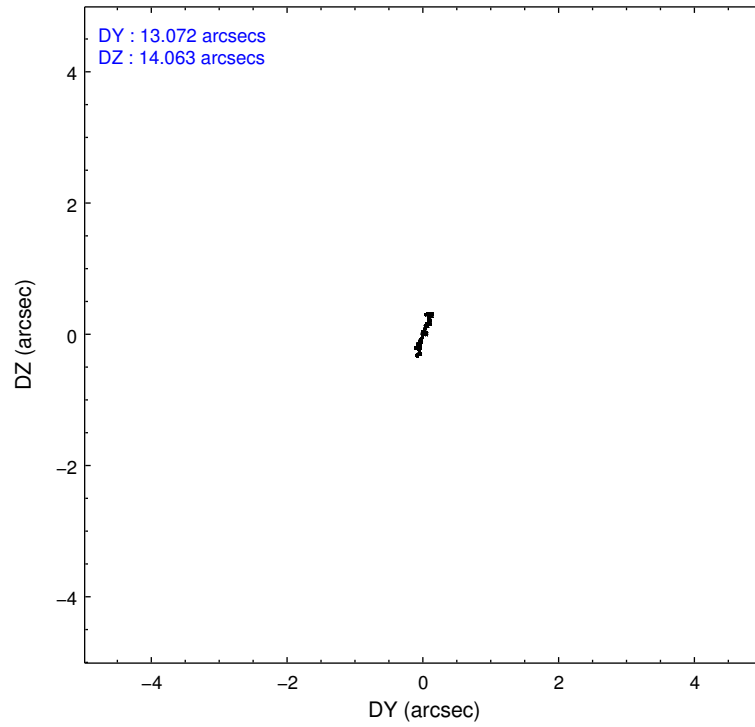
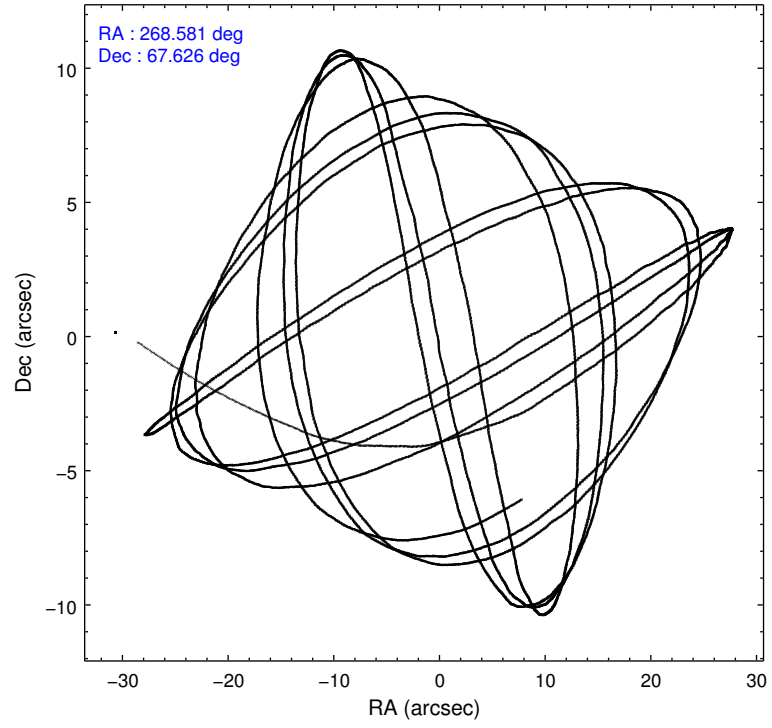
	<b>ccd 7</b>
grade 0 events	772
	5%
grade 1 events	20
	0%
grade 2 events	1370
	8%
grade 3 events	915
	5%
grade 4 events	892
	5%
grade 5 events	1343
	8%
grade 6 events	3249
	21%
grade 7 events	6778
	44%

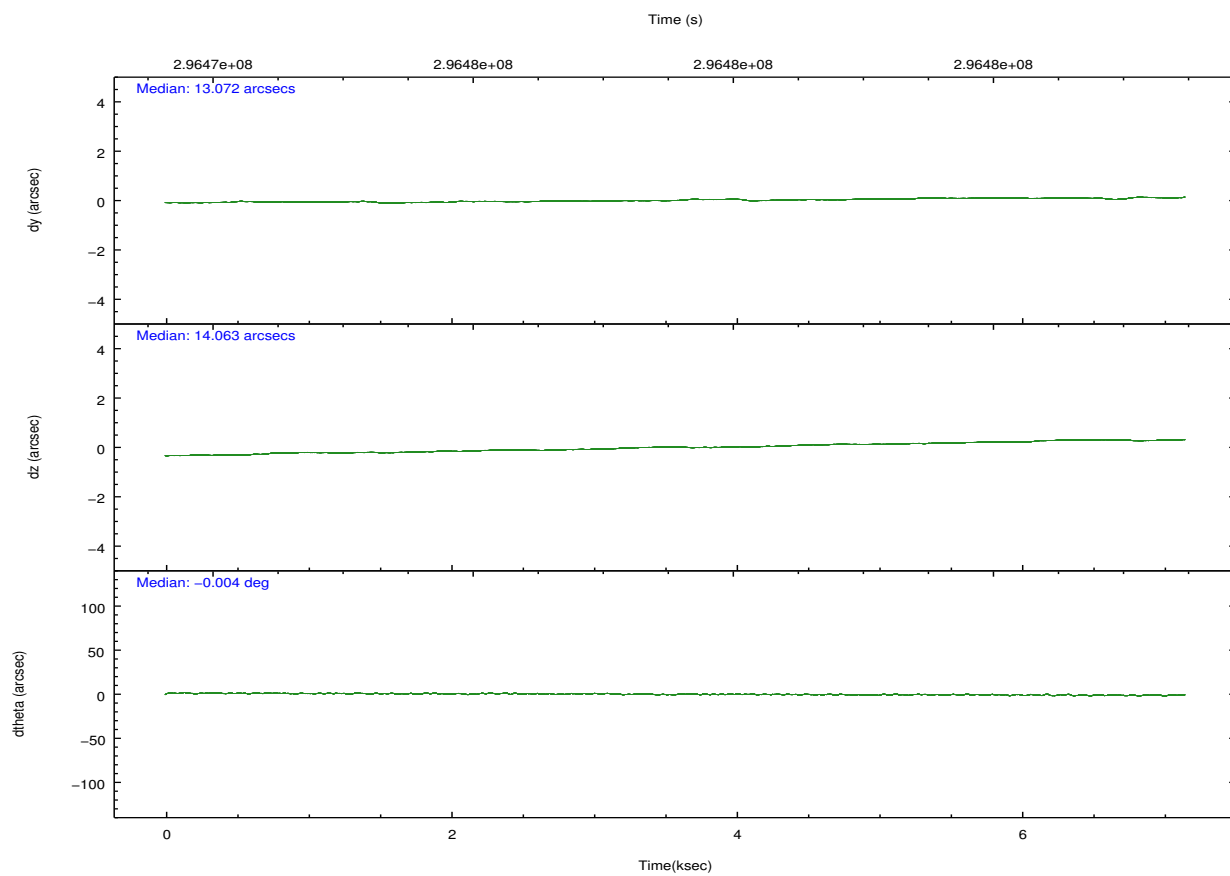
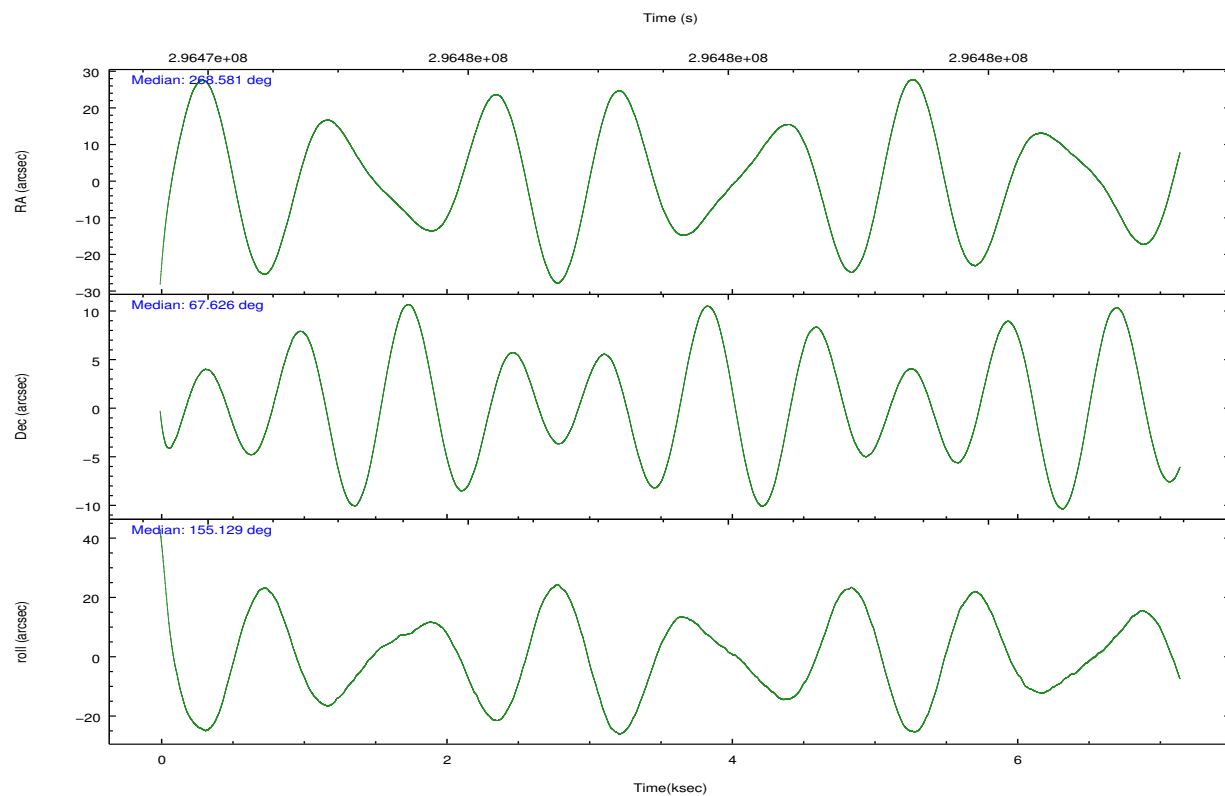


## 2.2 Compared Parameters

Parameter	Planned	Actual	Parameter	Planned	Actual
Instrument	ACIS	ACIS	Obspar format version number	7	7
Detector	ACIS-7	ACIS-7	Obspar file type	PREDICTED	ACTUAL
Grating	NONE	NONE	Obspar update status	NONE	UPDATED
Data mode	FAINT	FAINT	Number of optional ACIS chips dropped	0	0
Observation mode	POINTING	POINTING	On-chip summing requested	N	N
[deg] Pointing RA	268.651716	268.5802474890906	Subarray requested	CUSTOM	1/8
[deg] Pointing Dec	67.628839	67.62601612090597	Subarray start row	449	449
[deg] Pointing Roll	154.913311	155.1360516695675	Subarray row count	128	128
[mm] SIM focus pos	-0.684267	-0.6828225247311905	Alternating exposures requested	N	N
[mm] SIM defocus	0	0.001444936568705701	[s] Primary exposure time	0.000000	0.4
[mm] SIM translation stage pos	-190.132523	-190.145094680475			
[mm] SIM translation stage offset	0	0.01257209746719923			
[s] Observation start time (MET)	296474121.184000	296472215.41105			
Observation start date	2007-05-25T09:54:16	2007-05-25T09:23:35			
[s] Observation end time (MET)	296481121.184000	296482027.73652			
Observation end date	2007-05-25T11:50:56	2007-05-25T12:07:07			
Read mode	TIMED	TIMED			

## 2.3 Aspect



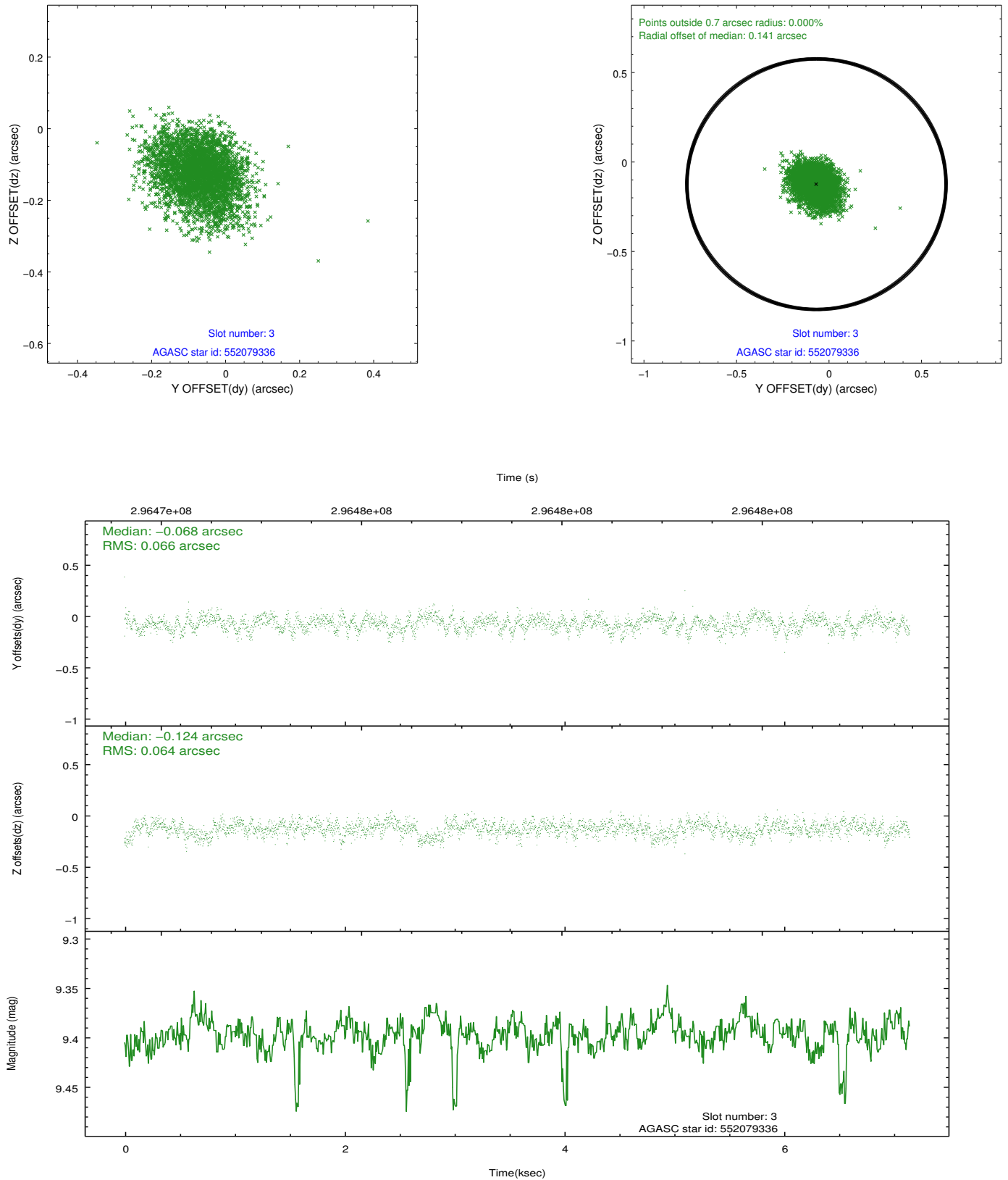


### Slot Statistics

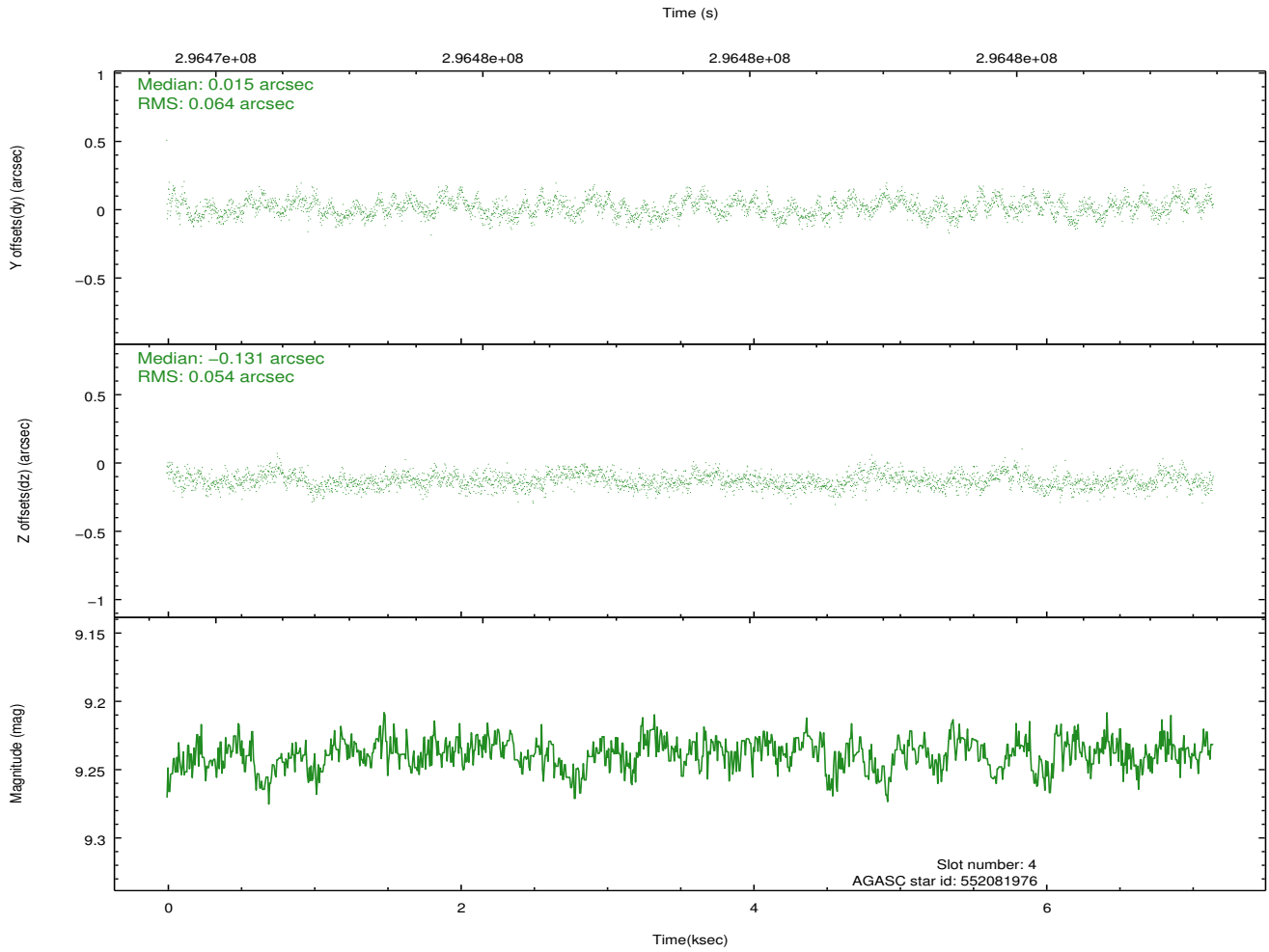
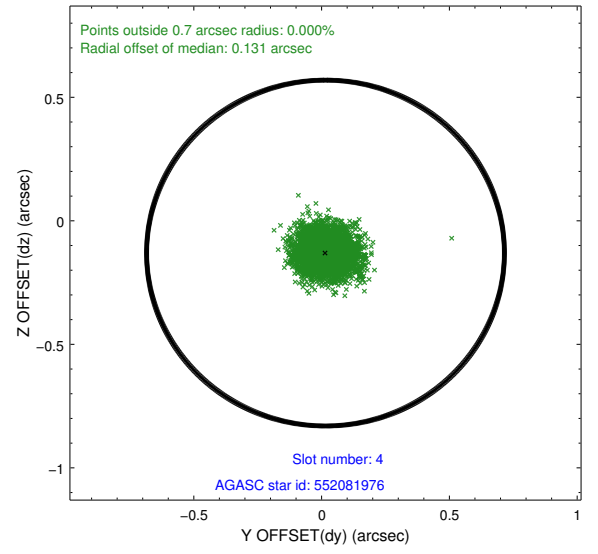
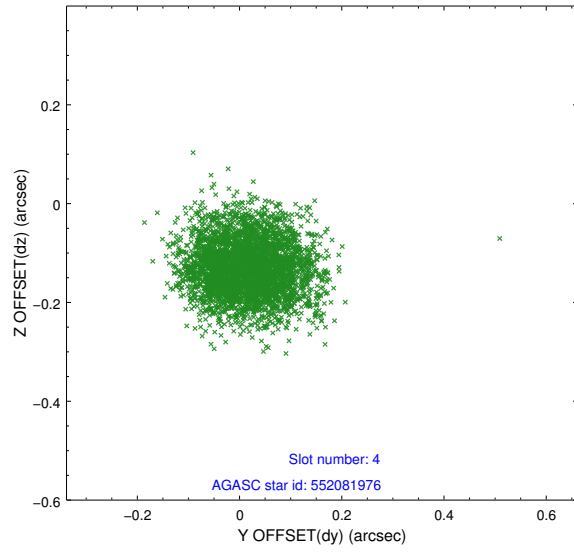
slot	status	id	mag	n_pts	med_dy	med_dz	dr1	dr2	ra	dec	mean_y	mean_z
0	FID	ACIS-S-2	7.09	1744	-0.042	-0.061	0.009	0.014	0.000000	0.000000	-766.04	-1735.37
1	FID	ACIS-S-4	7.19	1744	0.183	0.037	0.008	0.014	0.000000	0.000000	2147.09	172.38
2	FID	ACIS-S-5	7.22	1744	-0.172	0.033	0.008	0.013	0.000000	0.000000	-1817.98	166.95
3	GUIDE	552079336	9.40	3471	-0.068	-0.124	0.098	0.158	267.110070	67.265317	1398.80	2070.62
4	GUIDE	552081976	9.24	3484	0.015	-0.131	0.089	0.141	269.000724	66.928627	-1513.70	2073.45
5	GUIDE	580392208	8.66	3486	0.030	0.137	0.072	0.116	269.218850	67.601026	-745.62	-241.58
6	GUIDE	580395936	8.98	3486	0.020	0.071	0.084	0.139	269.727854	67.793590	-1068.92	-1169.41
7	GUIDE	580396416	9.37	3485	0.007	0.049	0.114	0.180	268.610456	67.747248	231.67	-362.53

## 2.4 Star Slots

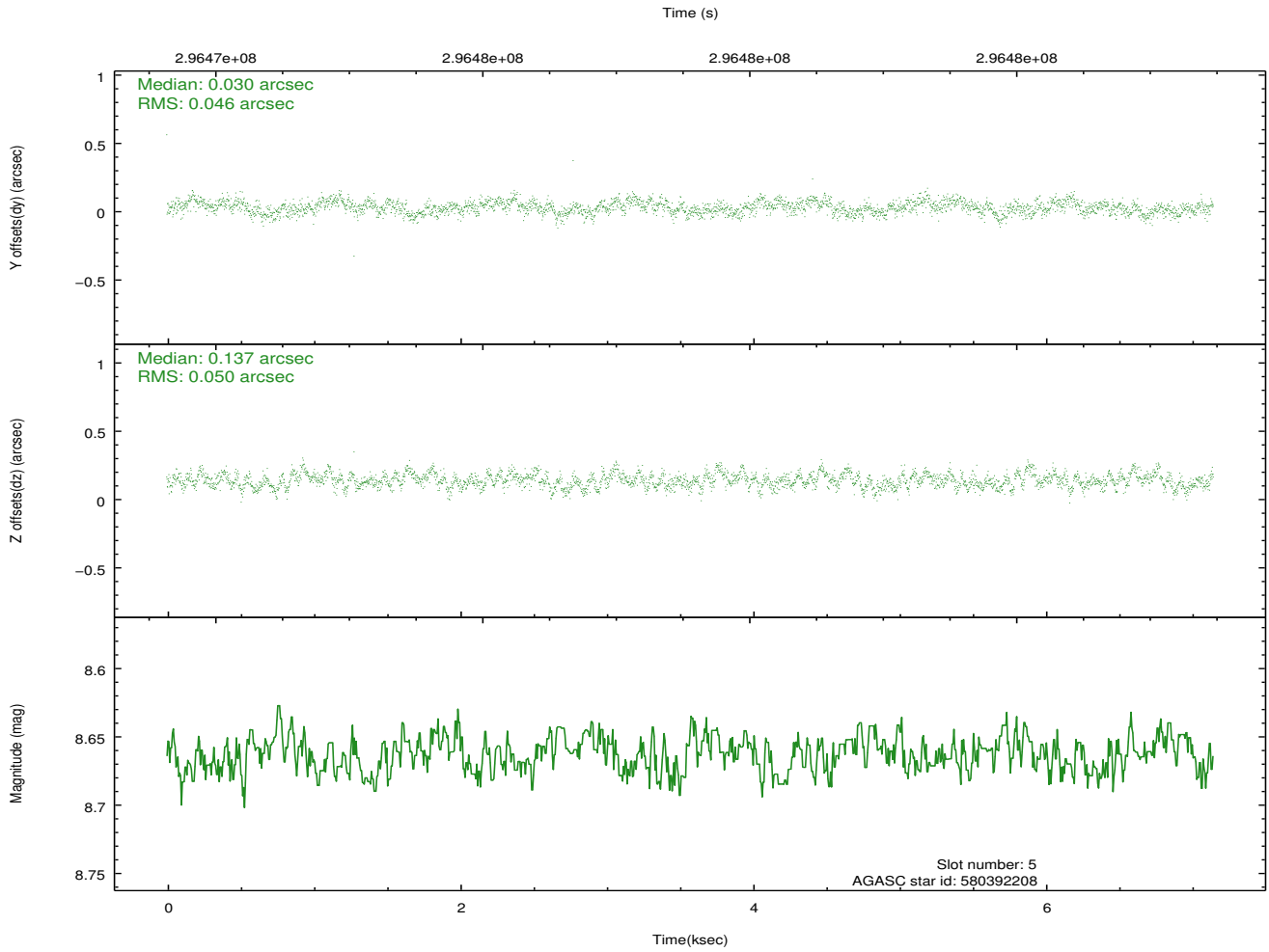
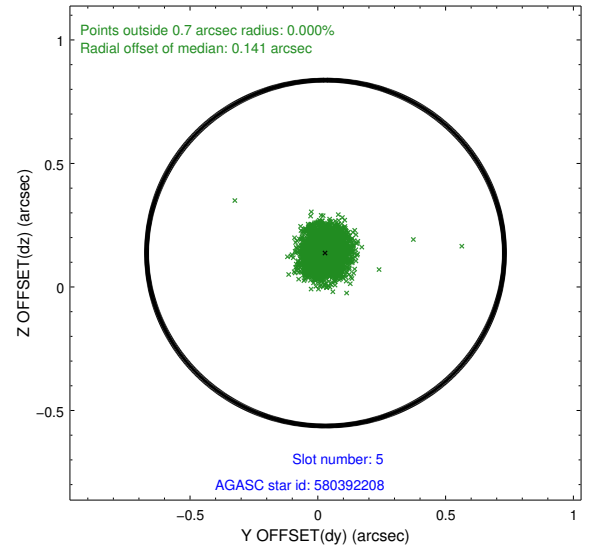
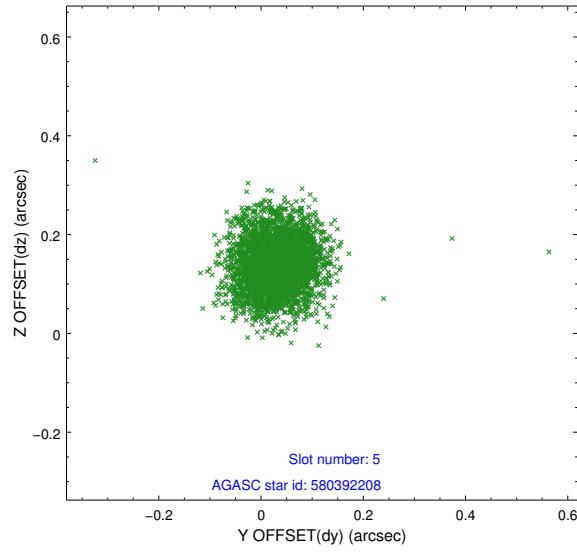
### 2.4.1 Slot 3



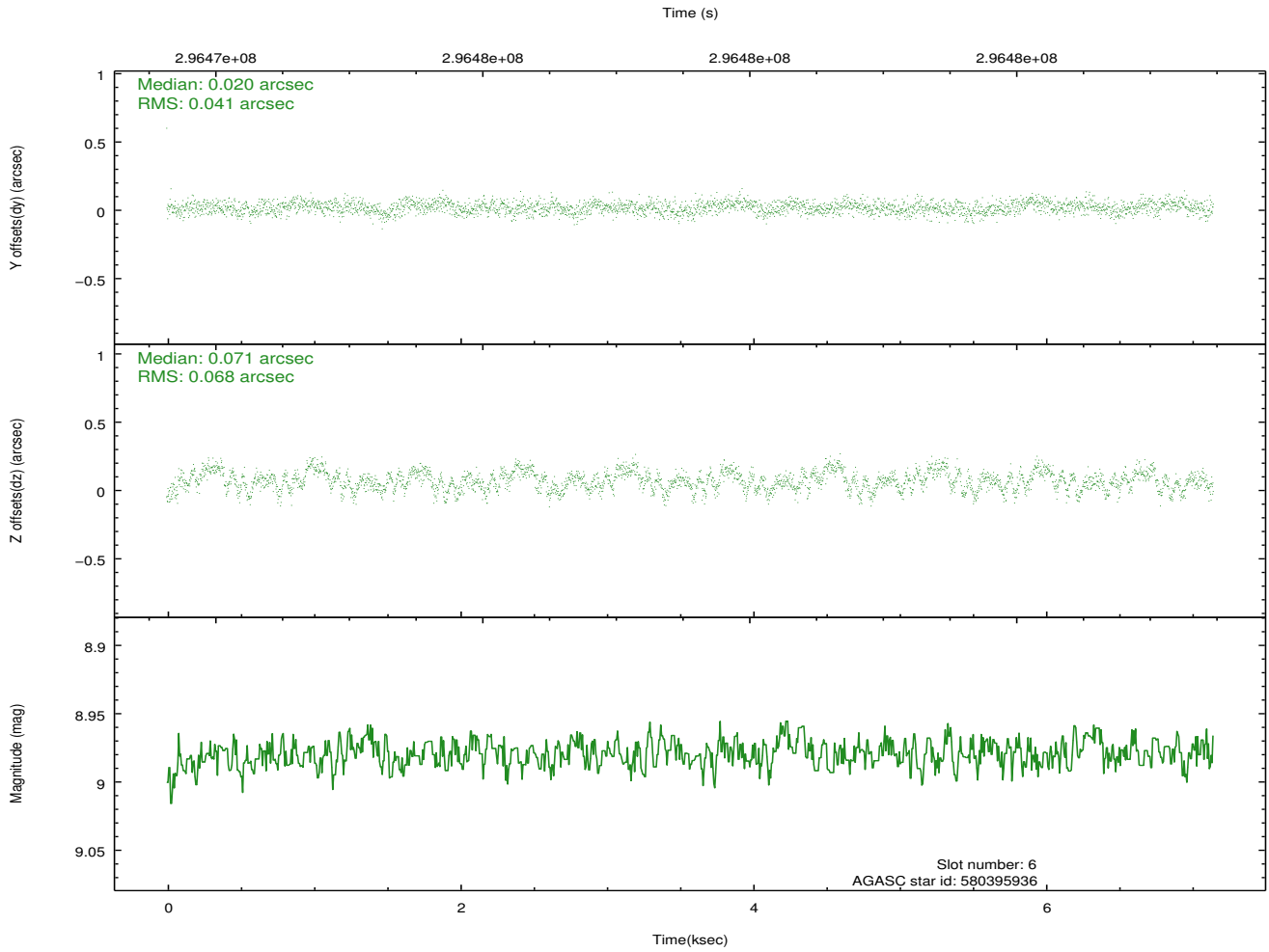
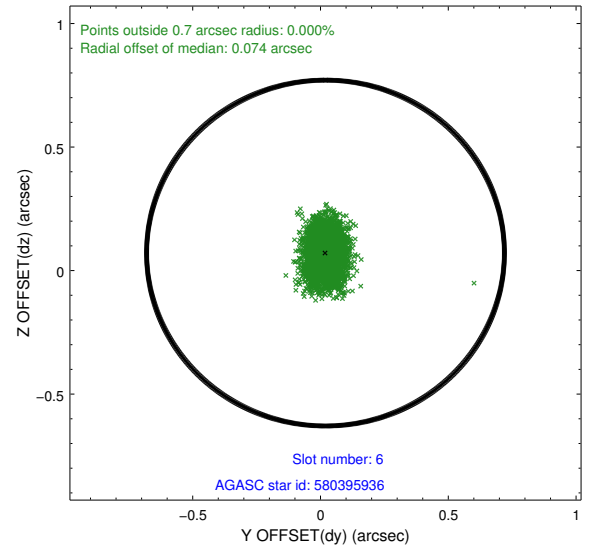
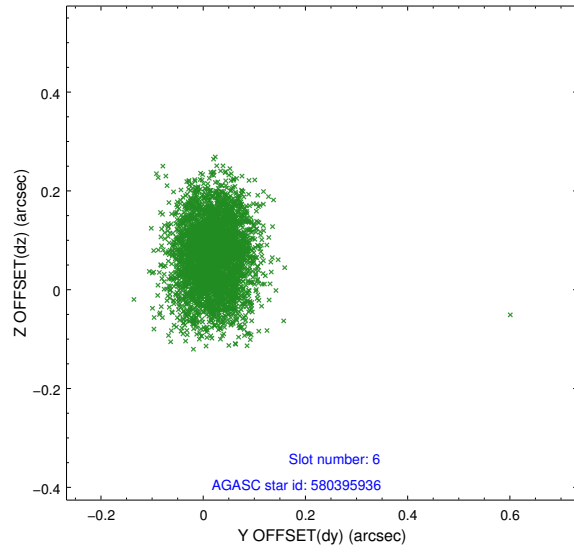
## 2.4.2 Slot 4



### 2.4.3 Slot 5

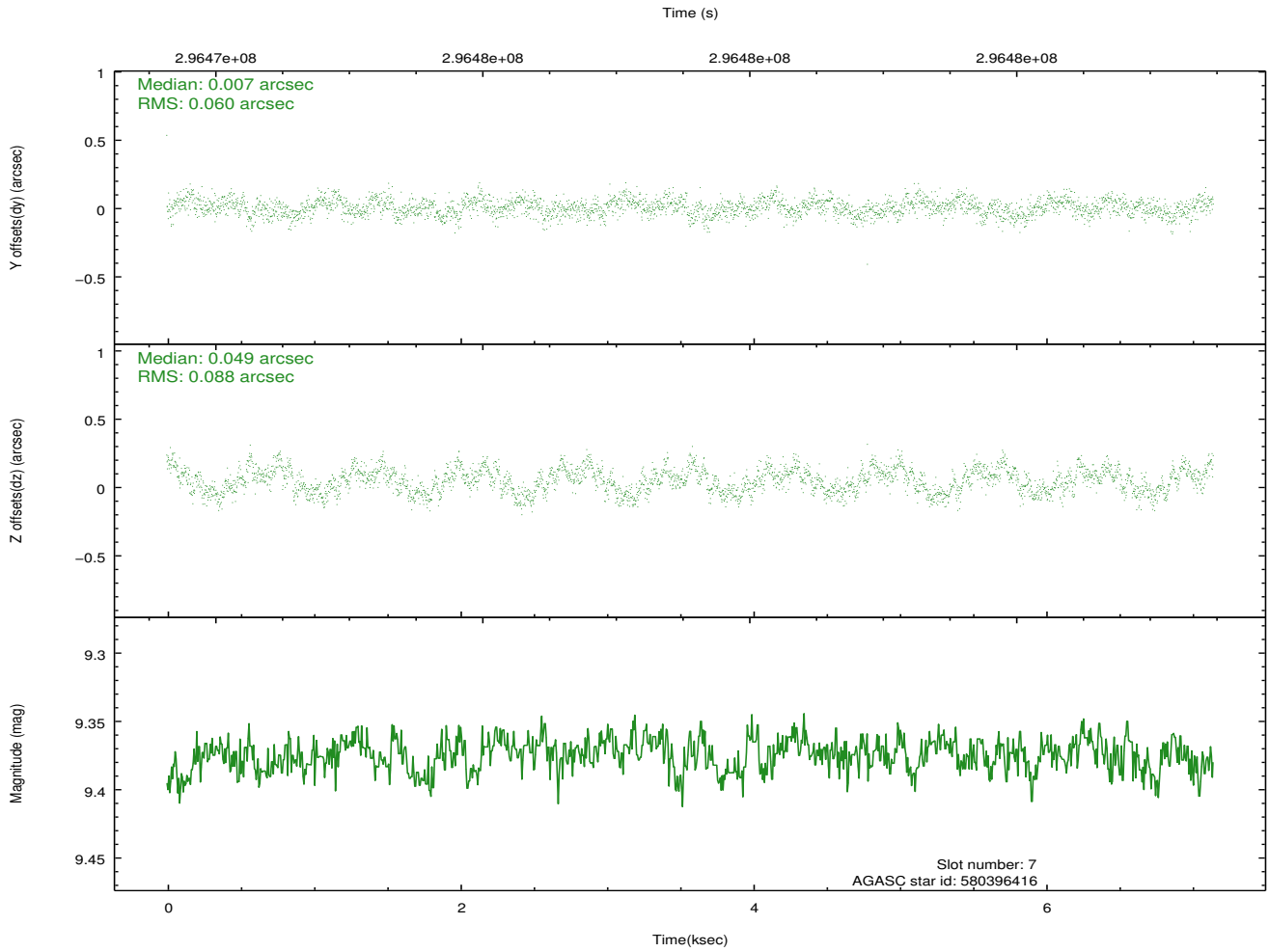
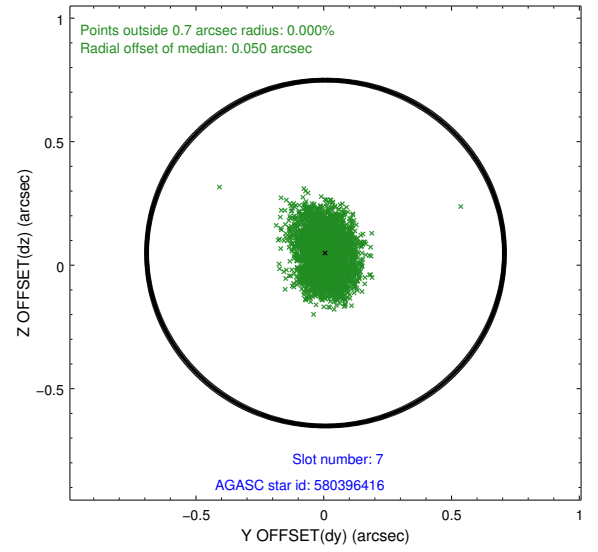
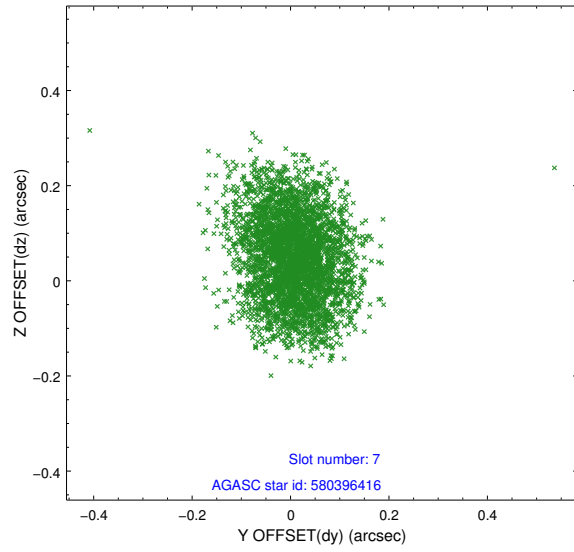


## 2.4.4 Slot 6



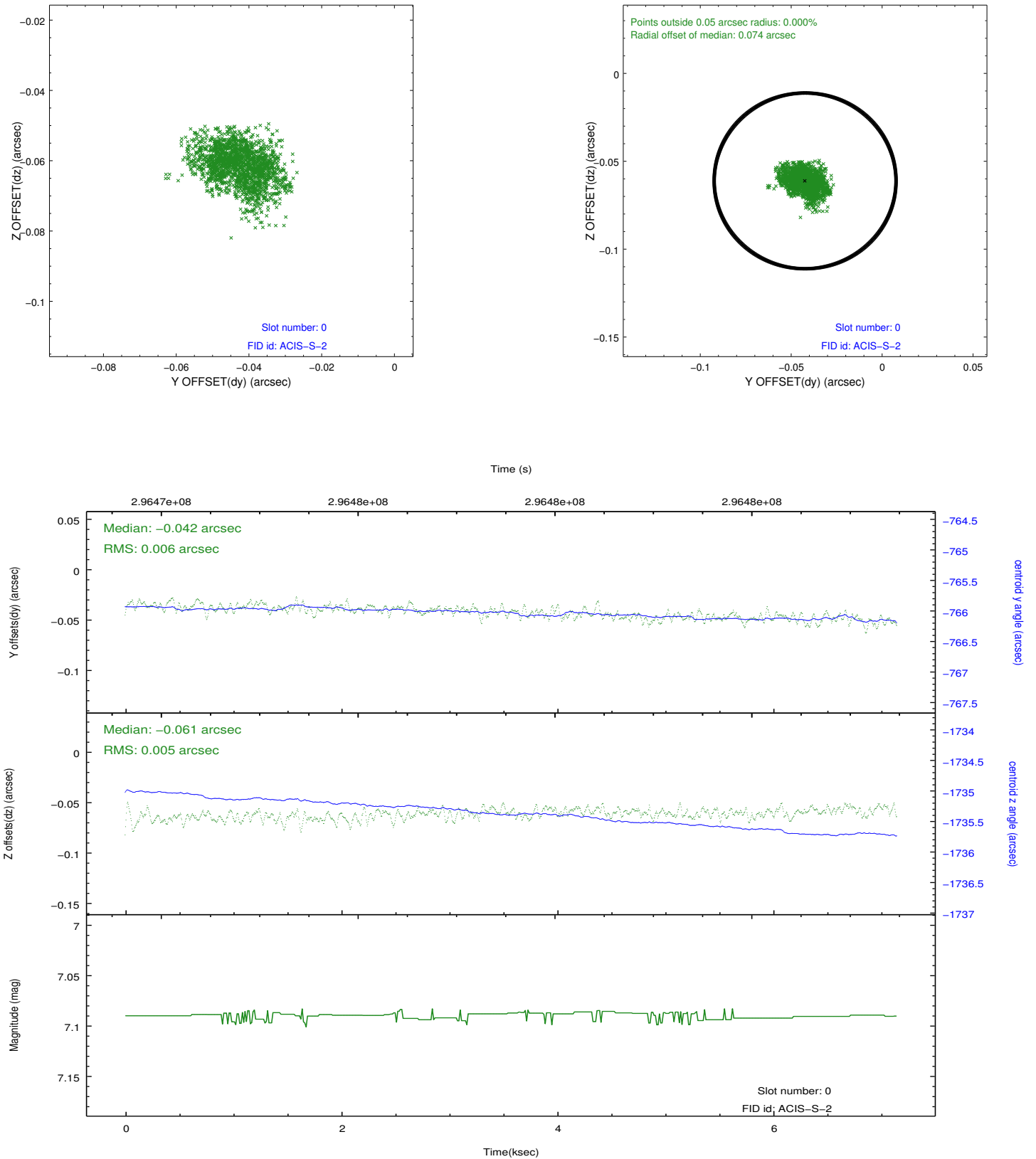


## 2.4.5 Slot 7

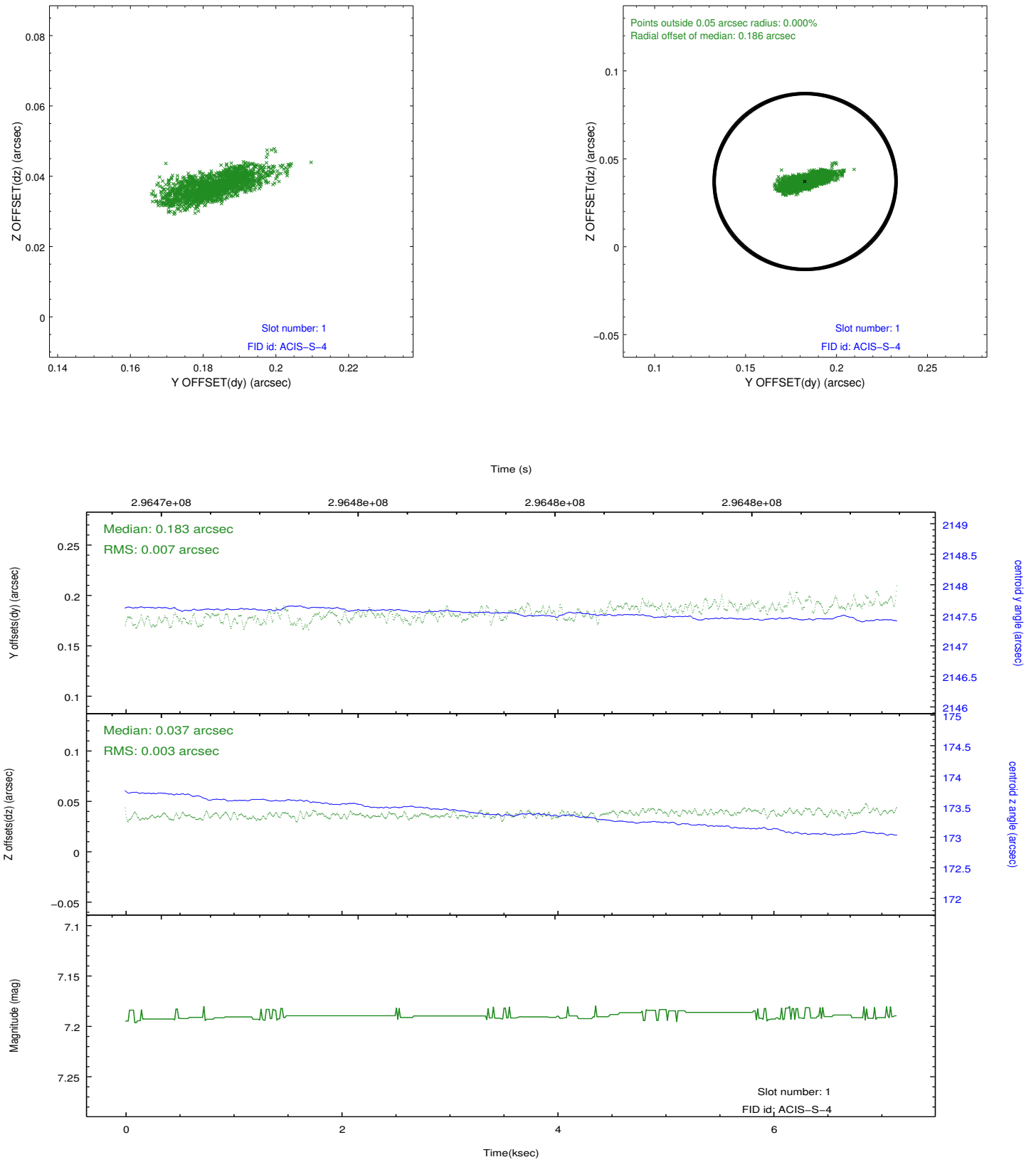


## 2.5 FID Slots

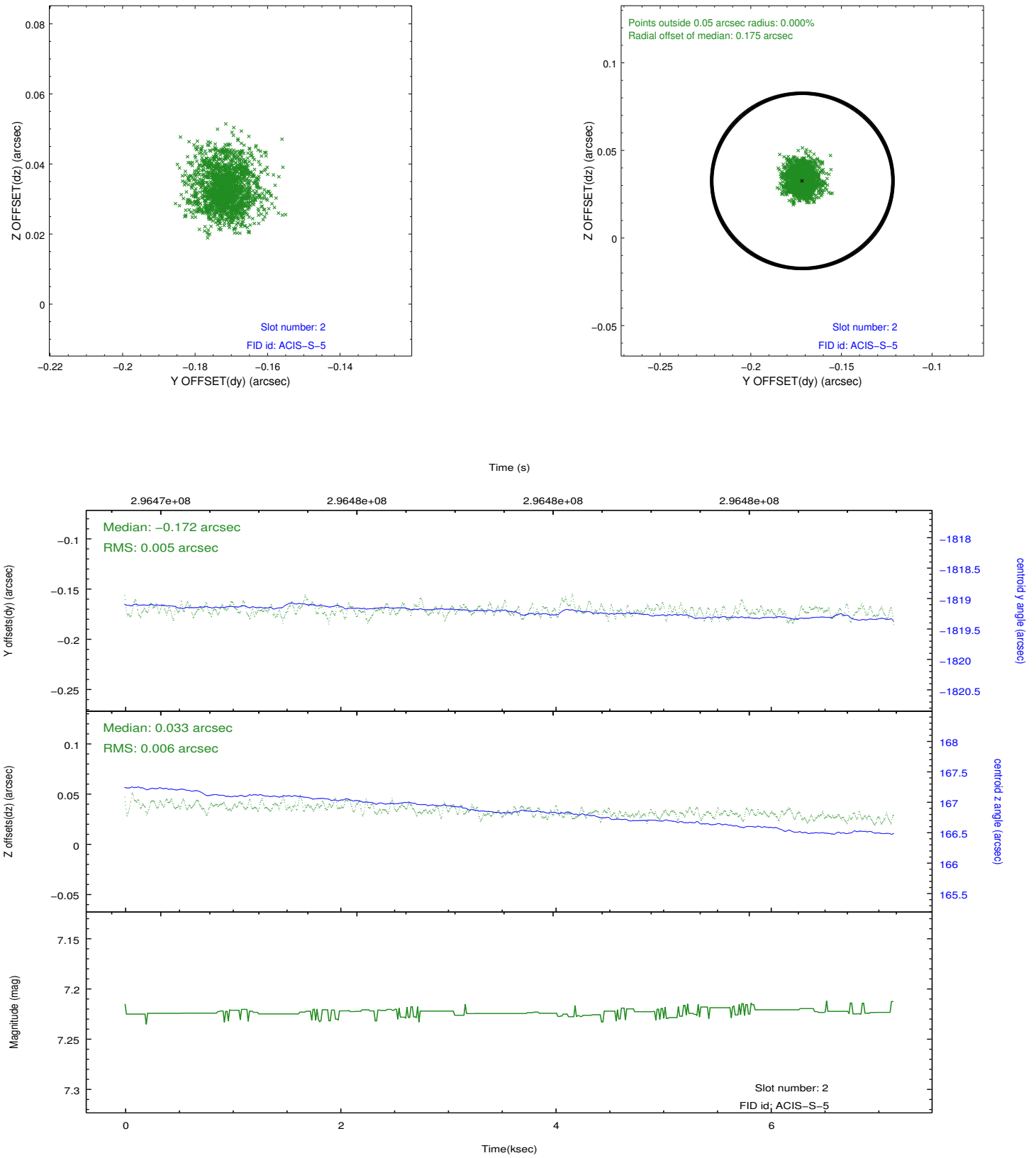
### 2.5.1 Slot 0



## 2.5.2 Slot 1



### 2.5.3 Slot 2



## A Summary

### A.1 Status

V&V Scientist	Jen Lauer
V&V Date (YYYY-MM-DD)	2012.04.25
V&V Edition	1
V&V Disposition and Status	OK
V&V Charge Time	7.14719957

### A.2 Comments

Coordinated with VLA. Roll preference met.