

V&V Reference Report

L2 ASCDS Version : 8.4.4

Observation 7852 - L2 Version 3
Chandra X-Ray Center

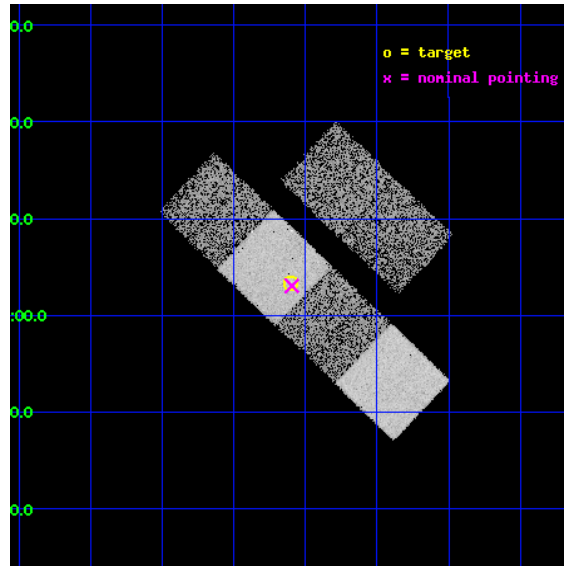
L2 Processing Date : Apr 23 2012

Contents

1	Front	2
2	OBI	3
2.1	OBI	3
2.1.1	Images	3
2.1.2	Bias	3
2.1.3	Parameters	4
2.1.4	Events	4
2.2	Compared Parameters	5
2.3	Aspect	6
2.4	Star Slots	9
2.4.1	Slot 3	9
2.4.2	Slot 4	10
2.4.3	Slot 5	11
2.4.4	Slot 6	12
2.4.5	Slot 7	13
2.5	FID Slots	14
2.5.1	Slot 0	14
2.5.2	Slot 1	15
2.5.3	Slot 2	16
A	Summary	17
A.1	Status	17
A.2	Comments	17

1 Front

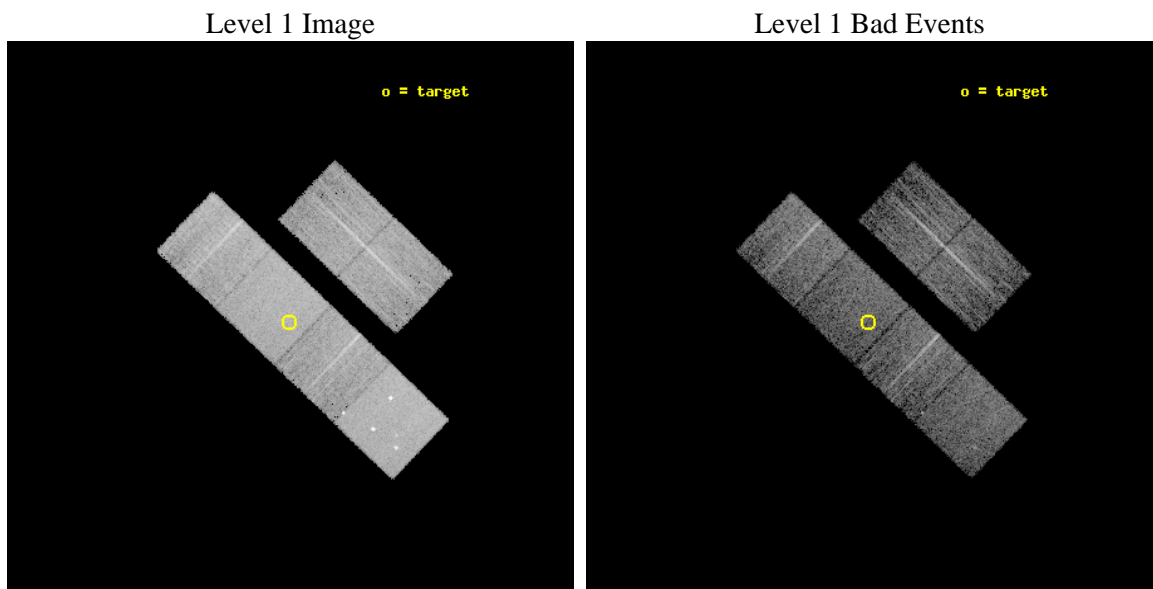
seq_num	701516	Sequence number
obs_id	7852	Observation id
title	Demographics of black holes in the local Universe.	Proposal title
observer	Prof. Smita Mathur	Principal investigator
object	NGC 4665	Source name
dtcycle	0	
cycle	P	events from which exps? Prim/Second/Both
ra_targ	191.275	Observer's specified target RA [deg]
dec_targ	3.055722	Observer's specified target Dec [deg]
ra_nom	191.27385482825	Nominal RA [deg]
dec_nom	3.0509653407202	Nominal Dec [deg]
roll_nom	223.72904238631	Nominal Roll [deg]
revision	3	Processing version of data
ontime	4751.999982357	Sum of GTIs [s]
livetime	4691.8272972696	Livetime [s]
ontime2	4751.999982357	Sum of GTIs [s]
ontime3	4751.999982357	Sum of GTIs [s]
ontime5	4751.999982357	Sum of GTIs [s]
ontime6	4751.999982357	Sum of GTIs [s]
ontime7	4751.999982357	Sum of GTIs [s]
ontime8	4748.7590219975	Sum of GTIs [s]
l2events	75397	Number of level 2 events



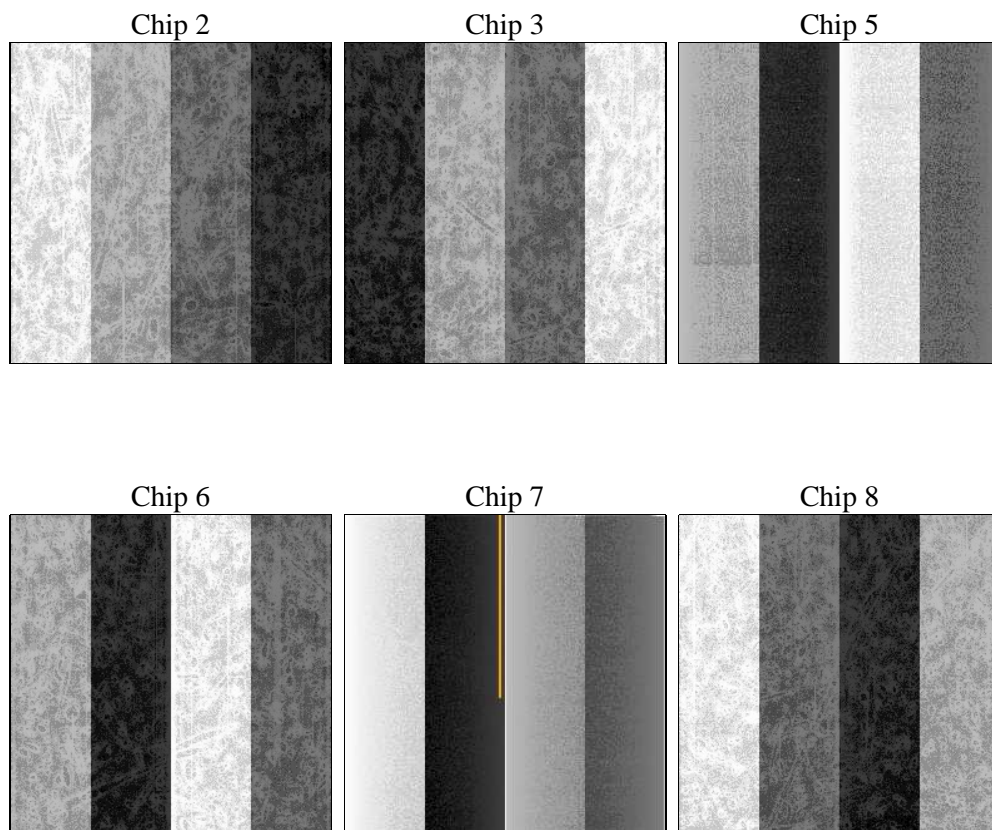
2 OBI

2.1 OBI

2.1.1 Images



2.1.2 Bias



2.1.3 Parameters

obi_num	0	Obi number	sched_exp_time	5000.000000	[s] Scheduled observation exposure time
ascdsver	8.4.4	Processing system revision	ontime	4751.999982357	Sum of GTIs [s]
caldsver	4.4.9	 	ontime2	4751.999982357	Sum of GTIs [s]
date	2012-04-23T09:09:56	Date and time of file creation	ontime3	4751.999982357	Sum of GTIs [s]
revision	3	Processing version of data	ontime5	4751.999982357	Sum of GTIs [s]
			ontime6	4751.999982357	Sum of GTIs [s]
			ontime7	4751.999982357	Sum of GTIs [s]
			ontime8	4748.7590219975	Sum of GTIs [s]
			l1events	333645	Number of level 1 events

2.1.4 Events

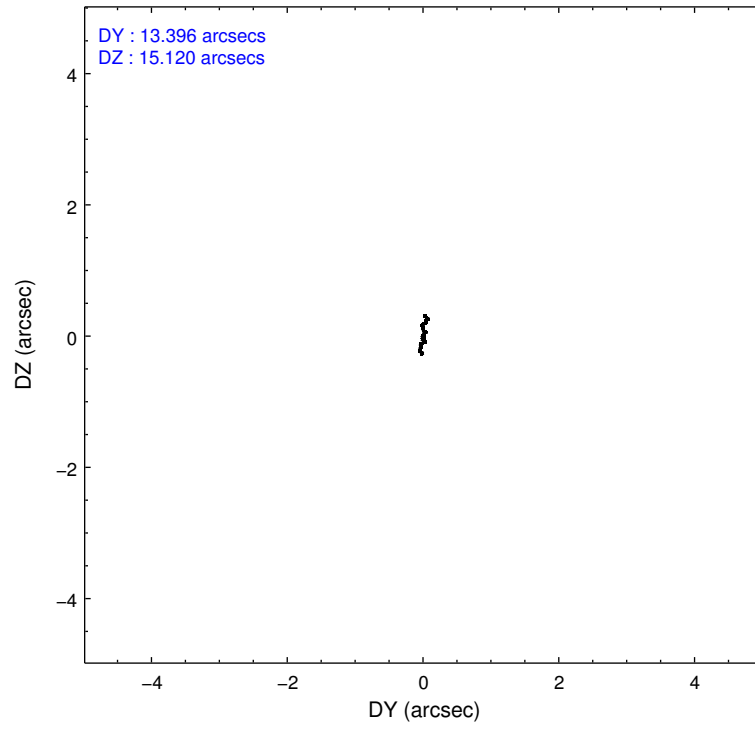
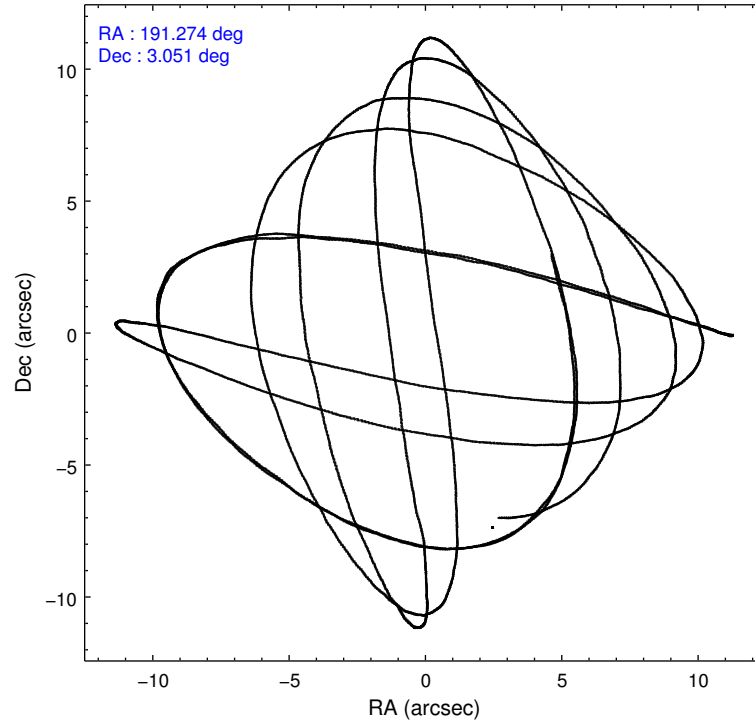
	ccd 2	ccd 3	ccd 5	ccd 6	ccd 7	ccd 8		ccd 2	ccd 3	ccd 5	ccd 6	ccd 7	ccd 8
level 1 events	46432	44141	71896	47019	62927	61230	grade 0 events	2433	2415	4573	2345	2420	4038
rejected events	41147	38861	37383	41333	36657	48331		5%	5%	6%	4%	3%	6%
rejected %	88%	88%	51%	87%	58%	78%	grade 1 events	29	30	172	29	77	51
								0%	0%	0%	0%	0%	0%
							grade 2 events	1002	1029	10511	1210	5296	2910
								2%	2%	14%	2%	8%	4%
							grade 3 events	479	461	1250	533	2223	1320
								1%	1%	1%	1%	3%	2%
							grade 4 events	499	486	1218	530	2250	1249
								1%	1%	1%	1%	3%	2%
							grade 5 events	1760	1941	5015	2155	5839	2770
								3%	4%	6%	4%	9%	4%
							grade 6 events	882	900	17035	1079	14111	3395
								1%	2%	23%	2%	22%	5%
							grade 7 events	39348	36879	32122	39138	30711	45497
								84%	83%	44%	83%	48%	74%

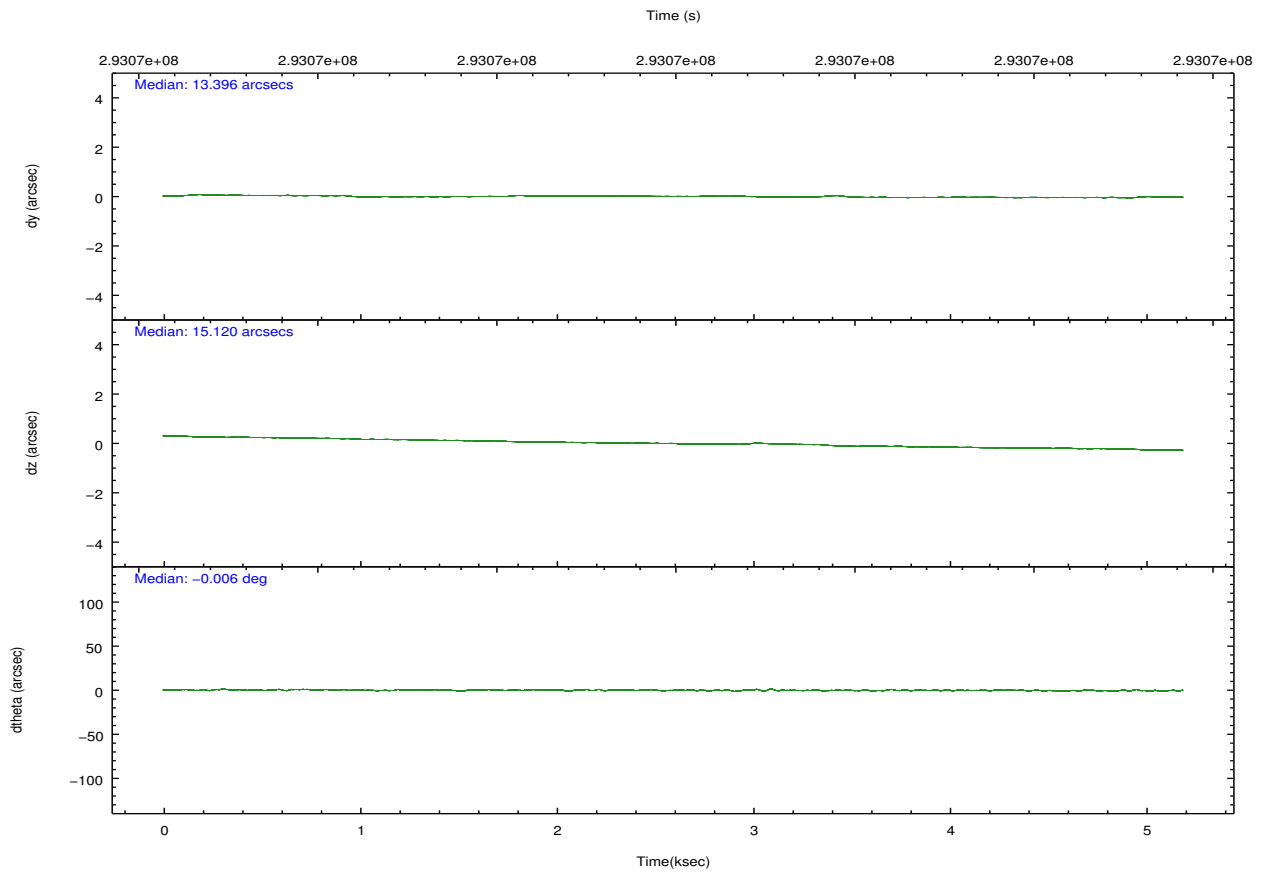
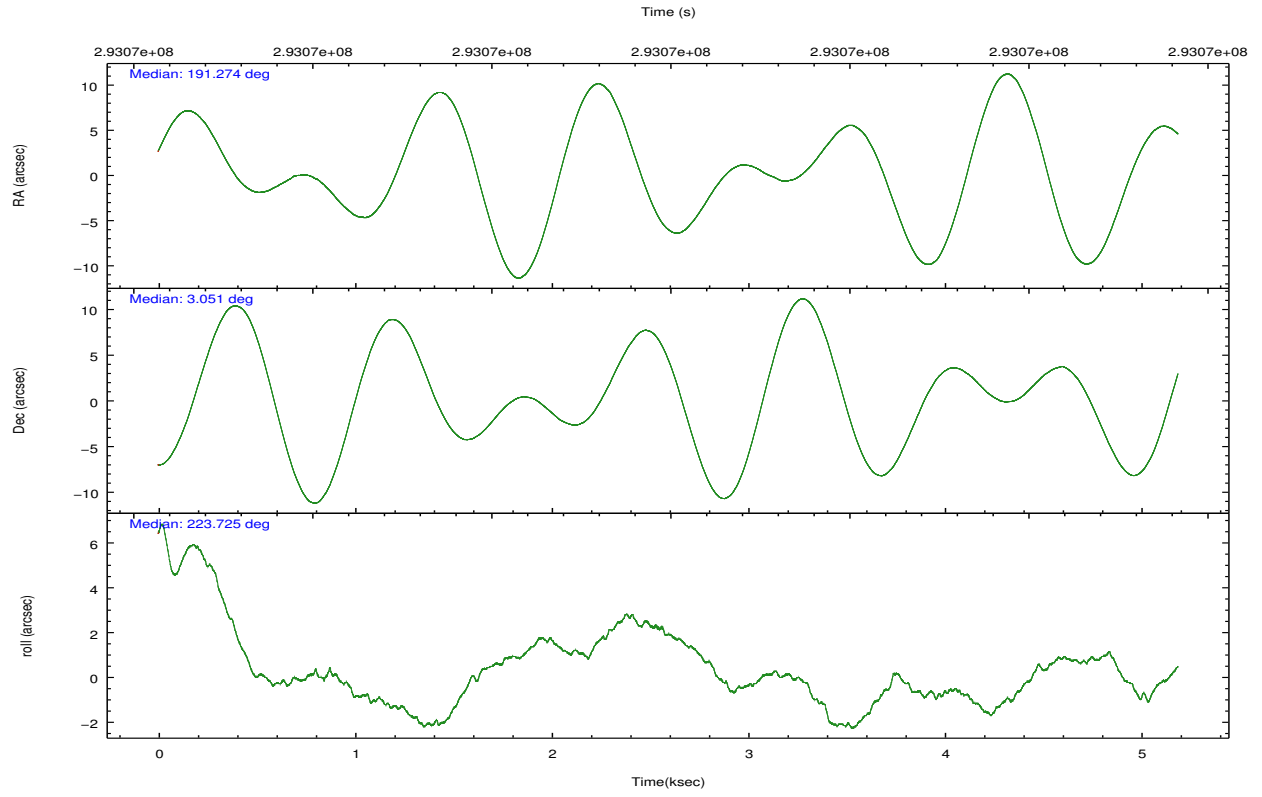
2.2 Compared Parameters

Parameter	Planned	Actual
Instrument	ACIS	ACIS
Detector	ACIS-235678	ACIS-235678
Grating	NONE	NONE
Data mode	FAINT	FAINT
Observation mode	POINTING	POINTING
[deg] Pointing RA	191.281088	191.2738548282476
[deg] Pointing Dec	3.077374	3.050965340720198
[deg] Pointing Roll	223.572019	223.7290423863087
[mm] SIM focus pos	-0.684267	-0.6828225247311905
[mm] SIM defocus	0	0.001444936568705701
[mm] SIM translation stage pos	-190.132523	-190.1400660498719
[mm] SIM translation stage offset	0	0.00754346686406393
[s] Observation start time (MET)	293067575.184000	293067004.32355
Observation start date	2007-04-15T23:38:30	2007-04-15T23:30:04
[s] Observation end time (MET)	293072575.184000	293072862.19883
Observation end date	2007-04-16T01:01:50	2007-04-16T01:07:42
Read mode	TIMED	TIMED

Parameter	Planned	Actual
Obspar format version number	7	7
Obspar file type	PREDICTED	ACTUAL
Obspar update status	NONE	UPDATED
Number of optional ACIS chips dropped	0	0
On-chip summing requested	N	N
Subarray requested	NONE	NONE
Alternating exposures requested	N	N
[s] Primary exposure time	0.000000	3.2

2.3 Aspect



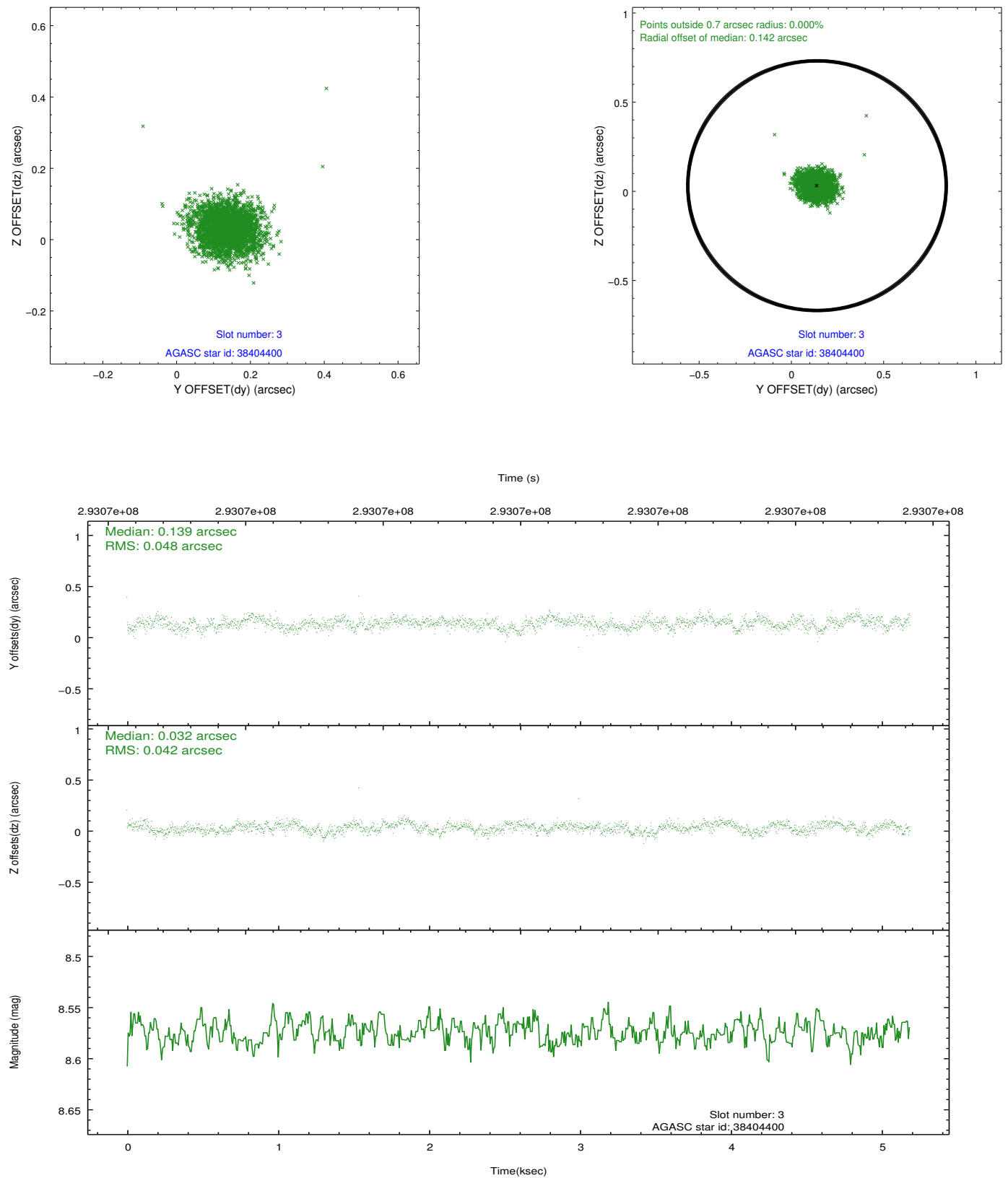


Slot Statistics

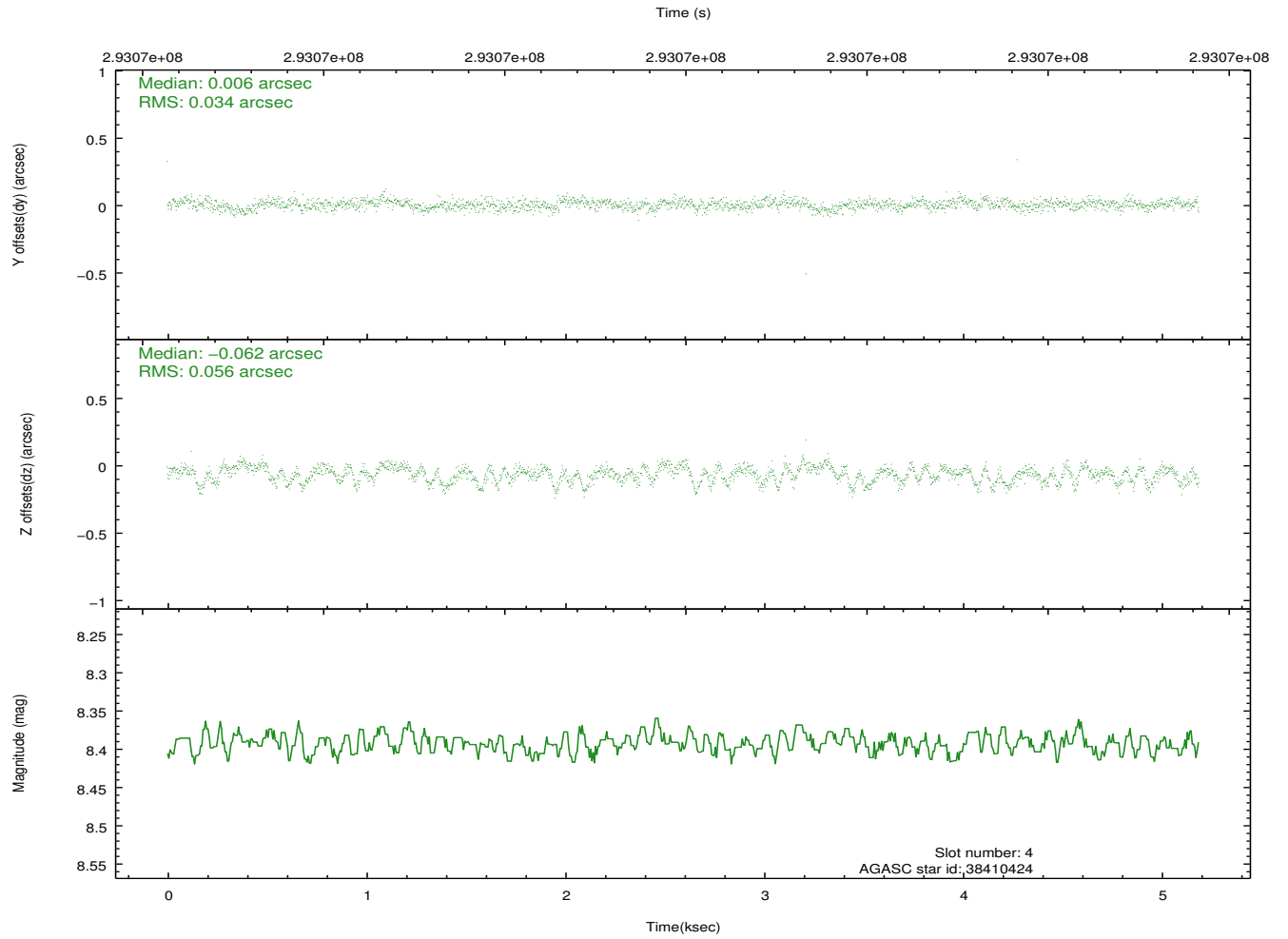
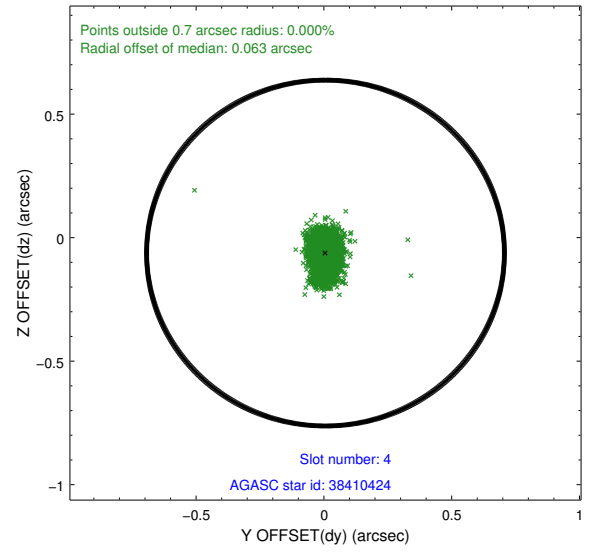
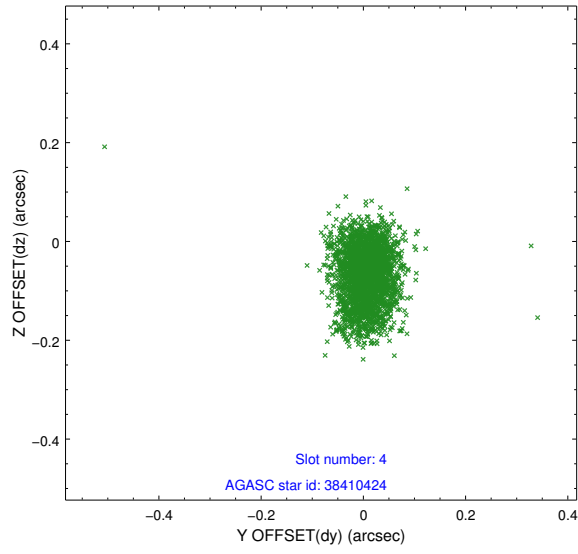
slot	status	id	mag	n_pts	med_dy	med_dz	dr1	dr2	ra	dec	mean_y	mean_z
0	FID	ACIS-S-1	7.19	1266	0.083	-0.078	0.011	0.019	0.000000	0.000000	929.82	-1732.20
1	FID	ACIS-S-5	7.23	1266	-0.160	0.044	0.007	0.012	0.000000	0.000000	-1818.79	164.23
2	FID	ACIS-S-6	7.33	1266	0.055	0.046	0.011	0.018	0.000000	0.000000	394.05	809.54
3	GUIDE	38404400	8.57	2527	0.139	0.032	0.067	0.107	190.883800	2.621151	2167.53	204.82
4	GUIDE	38410424	8.39	2532	0.006	-0.062	0.068	0.114	191.145260	3.531809	-772.72	-1522.43
5	GUIDE	38412104	9.76	2531	-0.005	0.110	0.106	0.178	191.441736	3.758453	-2108.00	-1379.48
6	GUIDE	38412712	8.52	2531	-0.141	-0.030	0.066	0.103	191.636717	3.169059	-1153.94	641.15
7	GUIDE	38412992	8.08	2530	0.006	-0.043	0.062	0.100	191.066546	3.351036	-120.30	-1245.12

2.4 Star Slots

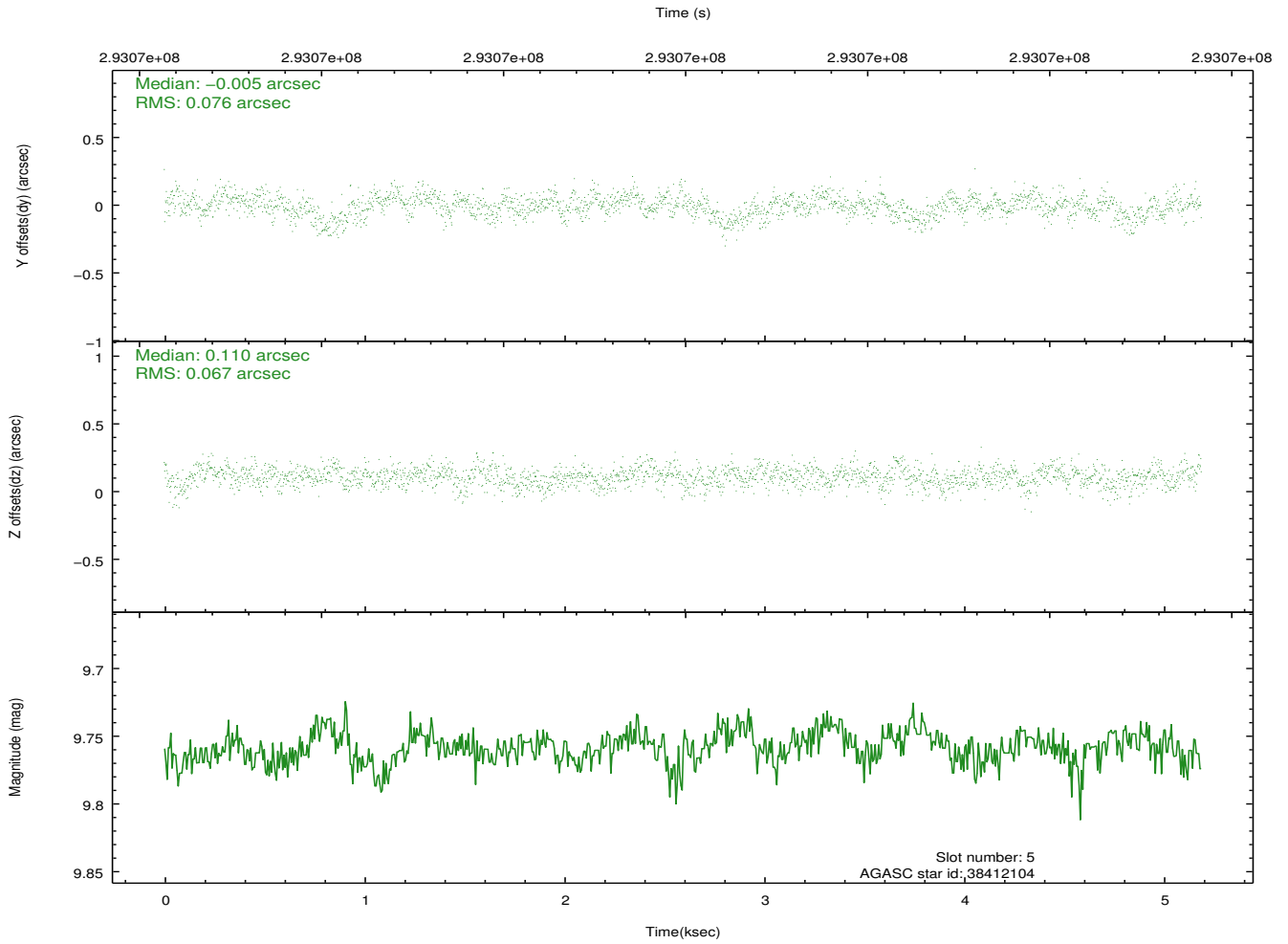
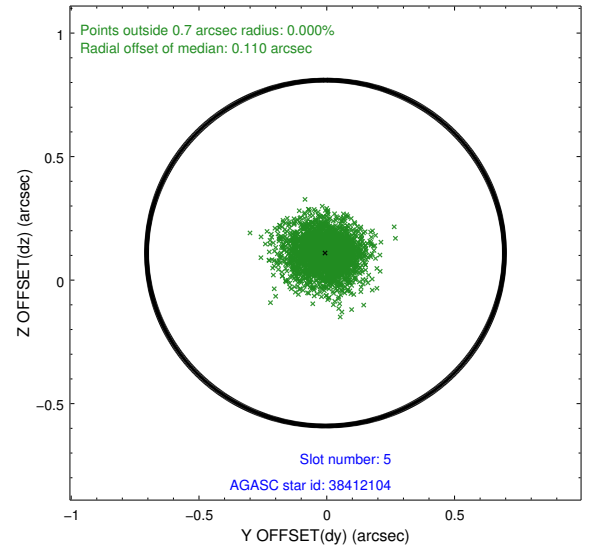
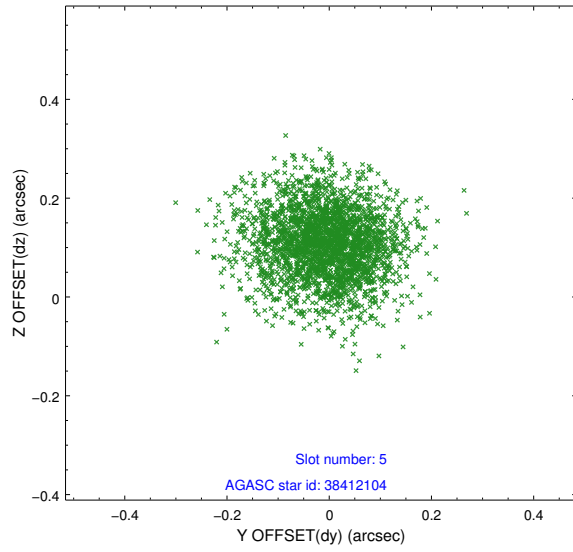
2.4.1 Slot 3



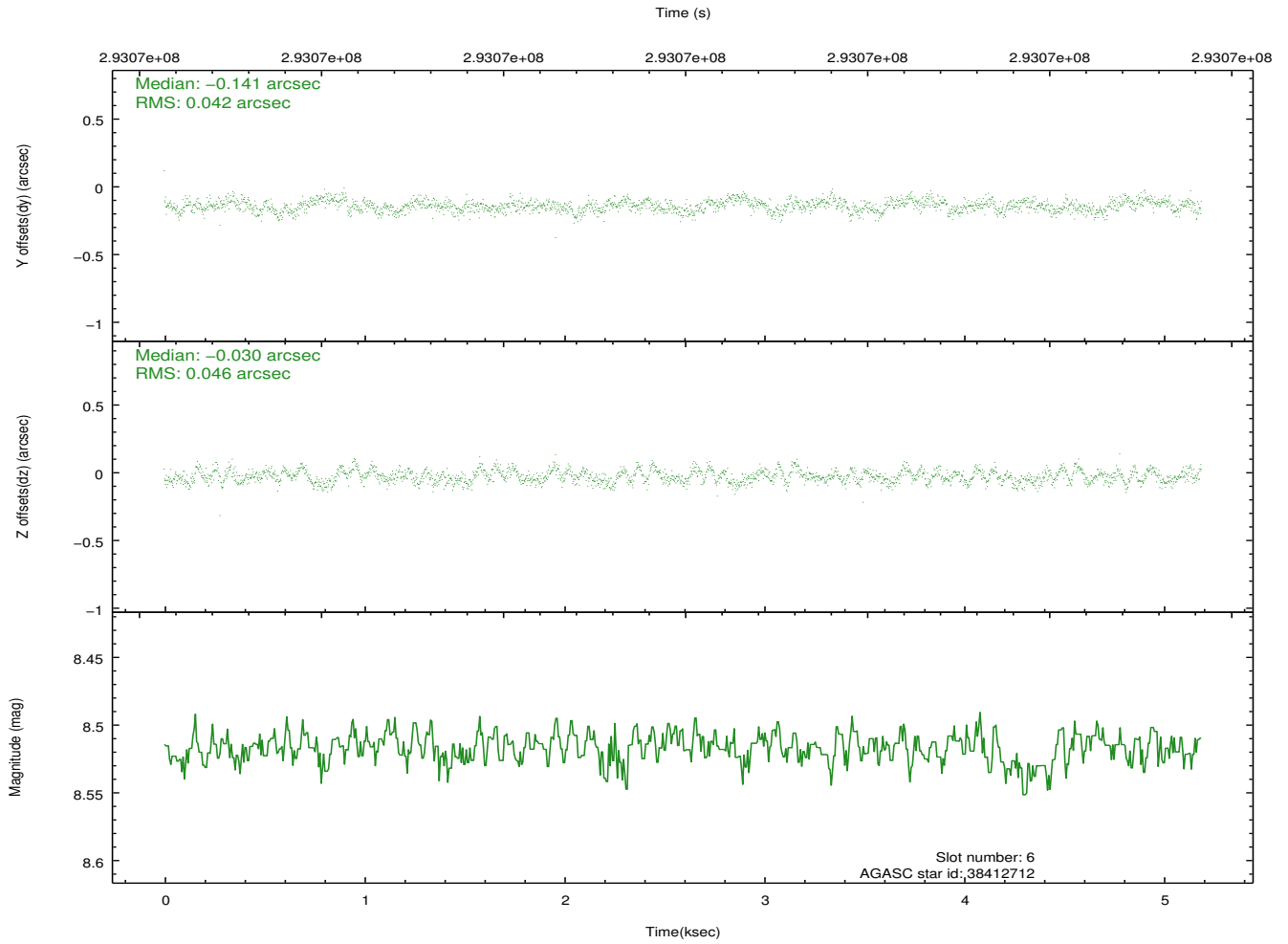
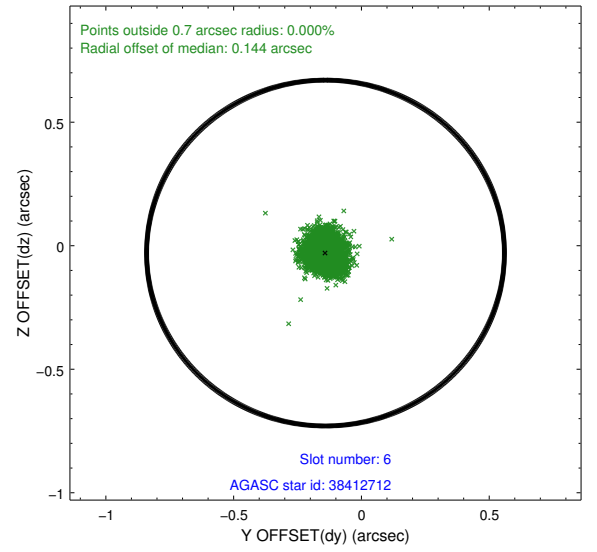
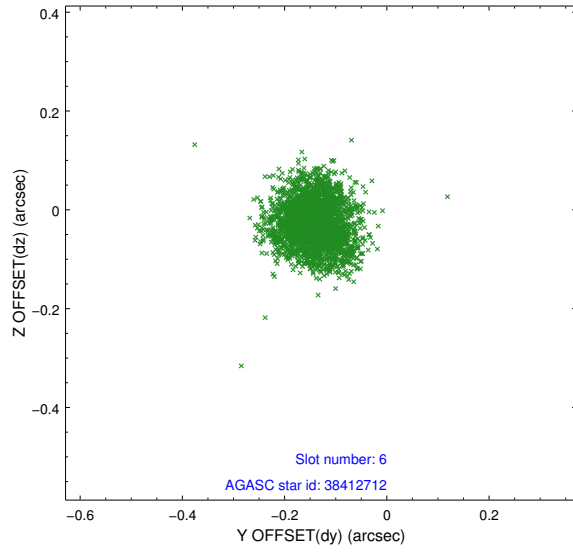
2.4.2 Slot 4



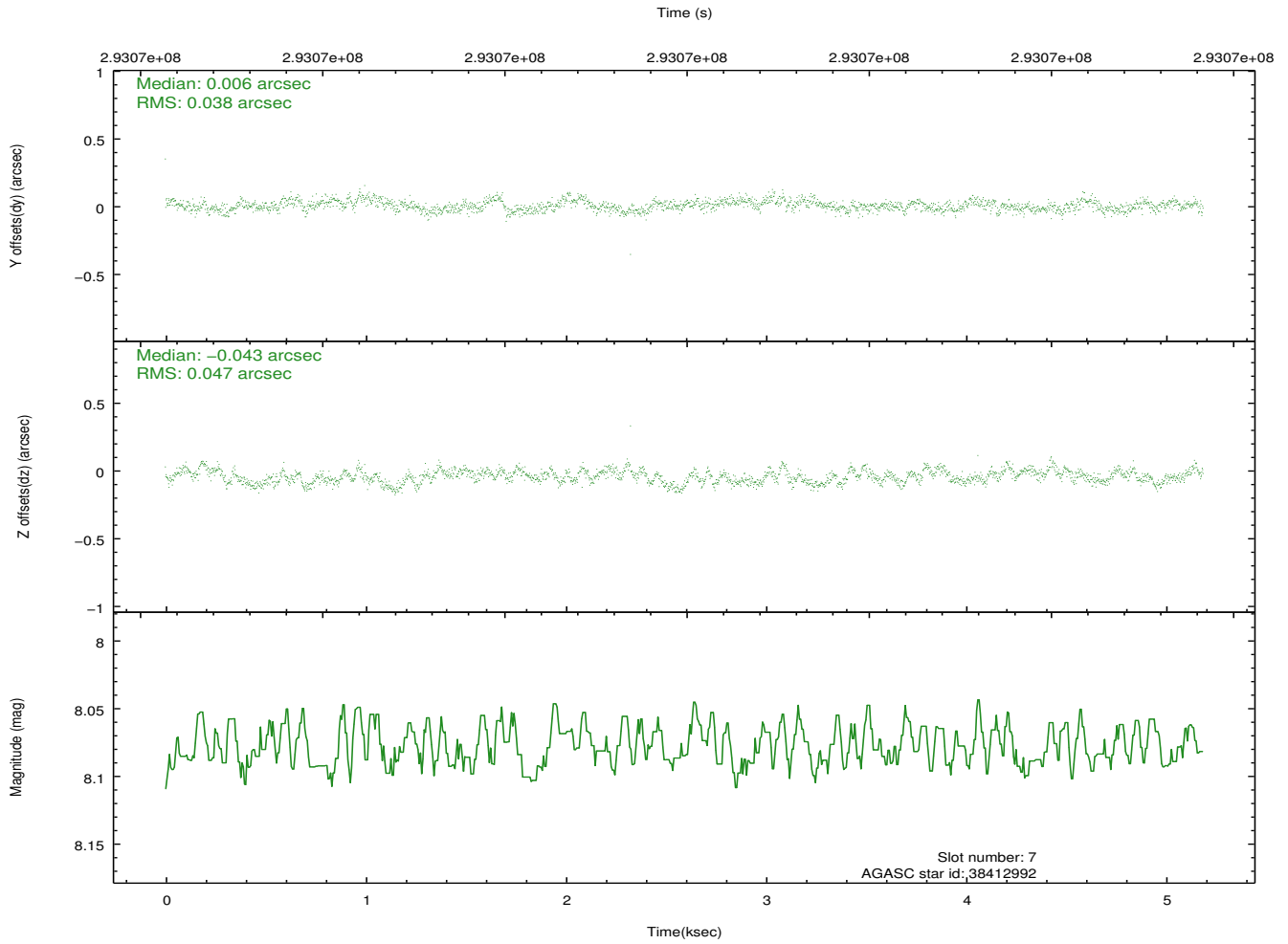
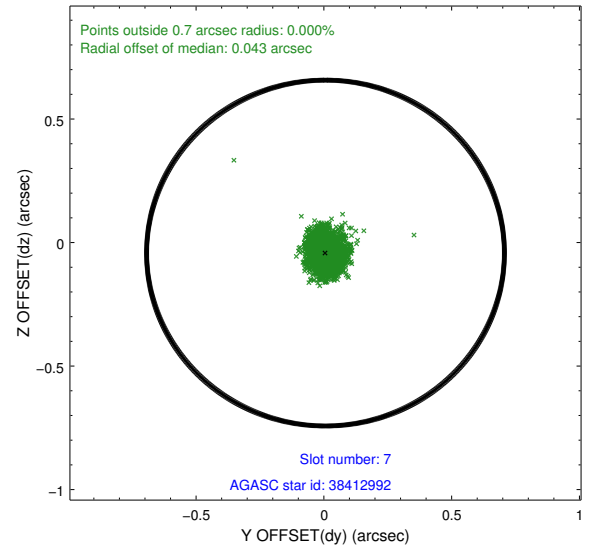
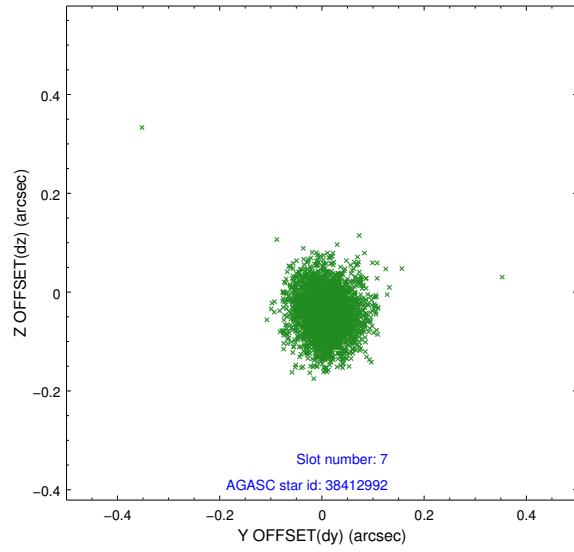
2.4.3 Slot 5



2.4.4 Slot 6

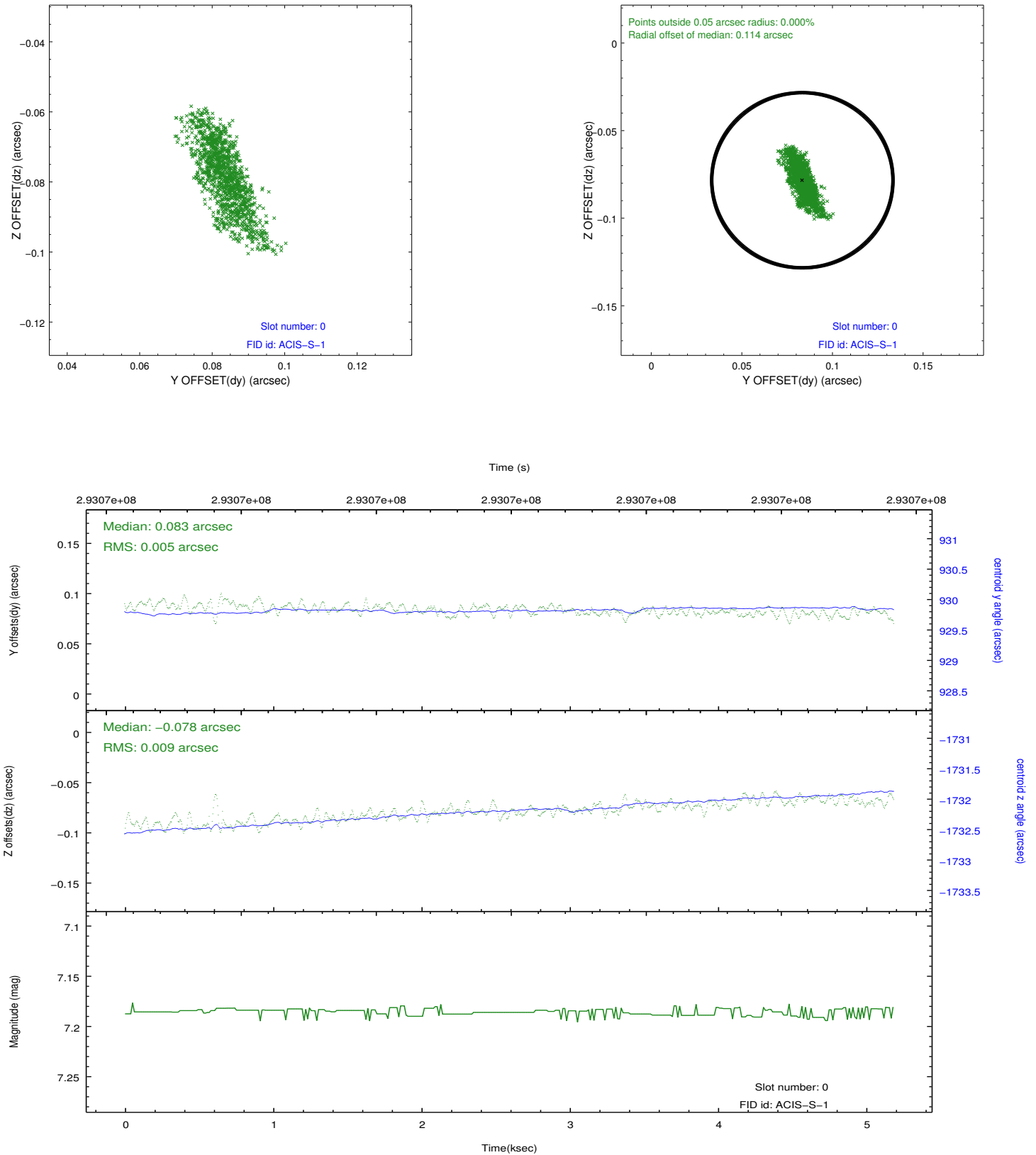


2.4.5 Slot 7

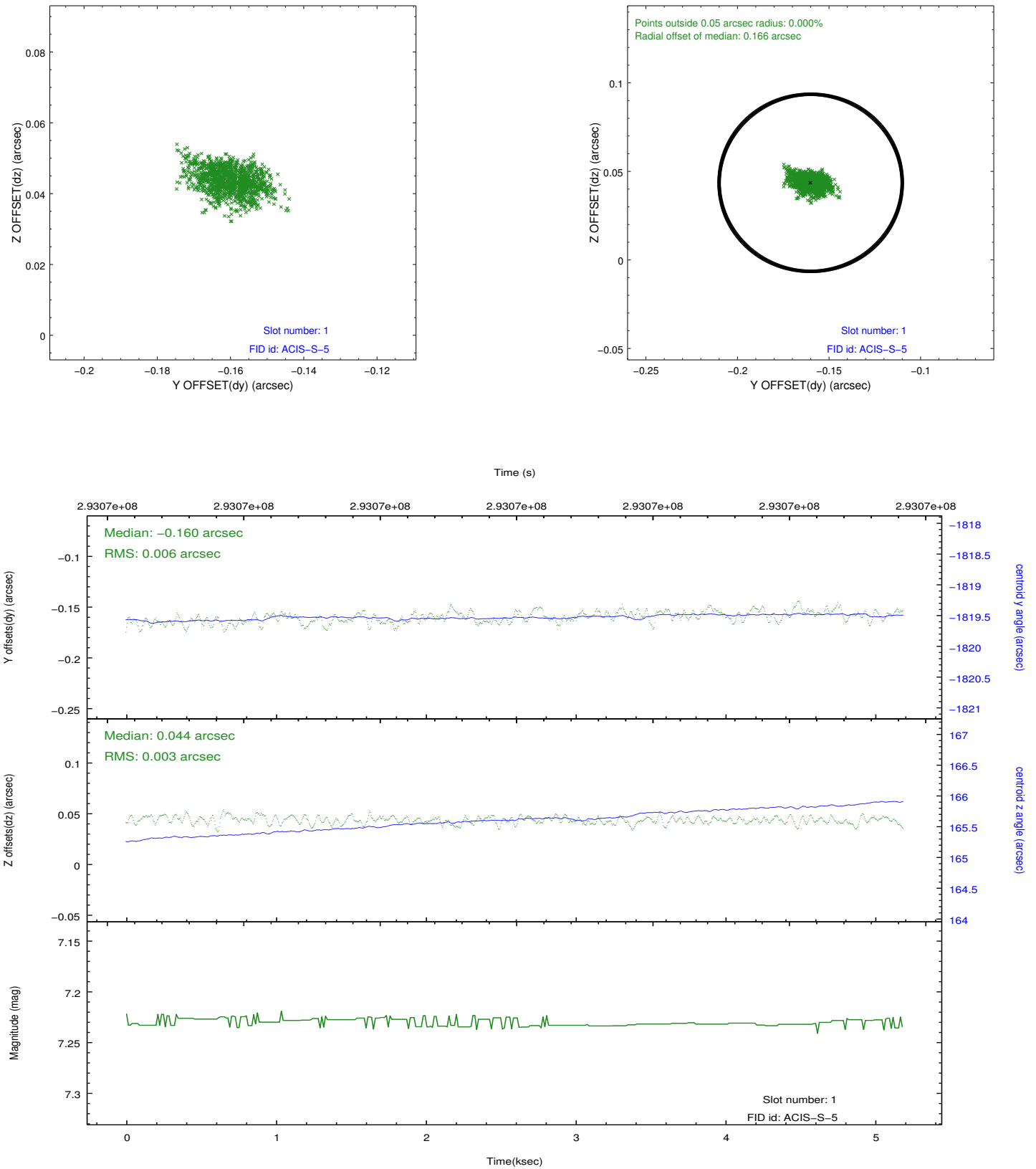


2.5 FID Slots

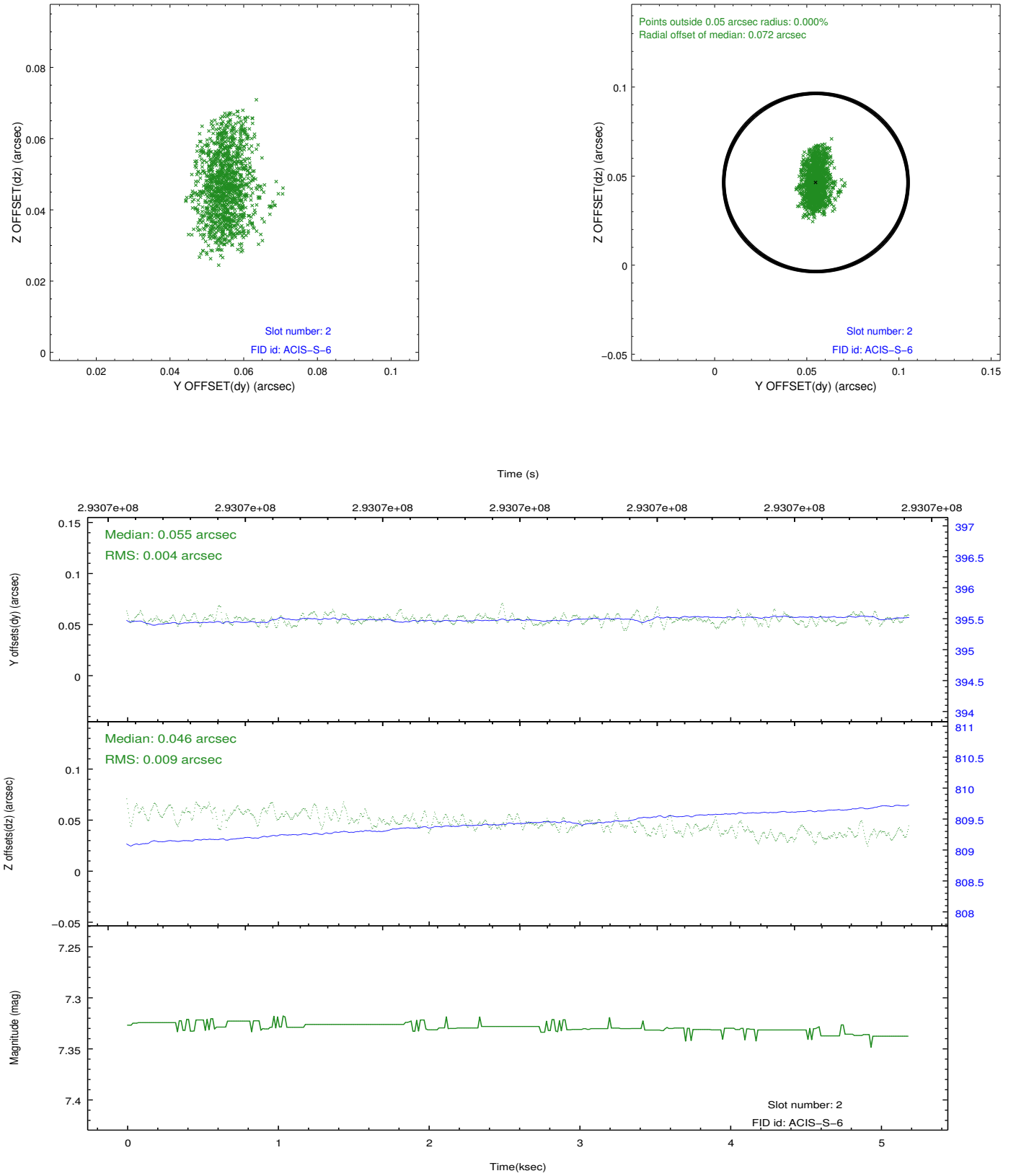
2.5.1 Slot 0



2.5.2 Slot 1



2.5.3 Slot 2



A Summary

A.1 Status

V&V Scientist	Jen Lauer
V&V Date (YYYY-MM-DD)	2012.04.24
V&V Edition	1
V&V Disposition and Status	OK
V&V Charge Time	4.75199998

A.2 Comments