

# V&V Reference Report

## L2 ASCDS Version : 8.4.4

Observation 7784 - L2 Version 3  
Chandra X-Ray Center

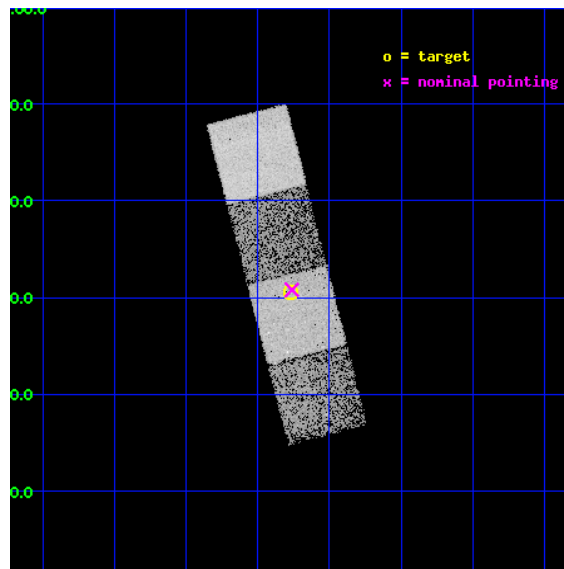
L2 Processing Date : Apr 20 2012

## Contents

<b>1</b>	<b>Front</b>	<b>2</b>
<b>2</b>	<b>OBI</b>	<b>3</b>
2.1	OBI . . . . .	3
2.1.1	Images . . . . .	3
2.1.2	Bias . . . . .	3
2.1.3	Parameters . . . . .	4
2.1.4	Events . . . . .	4
2.2	Compared Parameters . . . . .	5
2.3	Aspect . . . . .	6
2.4	Star Slots . . . . .	9
2.4.1	Slot 3 . . . . .	9
2.4.2	Slot 4 . . . . .	10
2.4.3	Slot 5 . . . . .	11
2.4.4	Slot 6 . . . . .	12
2.4.5	Slot 7 . . . . .	13
2.5	FID Slots . . . . .	14
2.5.1	Slot 0 . . . . .	14
2.5.2	Slot 1 . . . . .	15
2.5.3	Slot 2 . . . . .	16
<b>A</b>	<b>Summary</b>	<b>17</b>
A.1	Status . . . . .	17
A.2	Comments . . . . .	17

# 1 Front

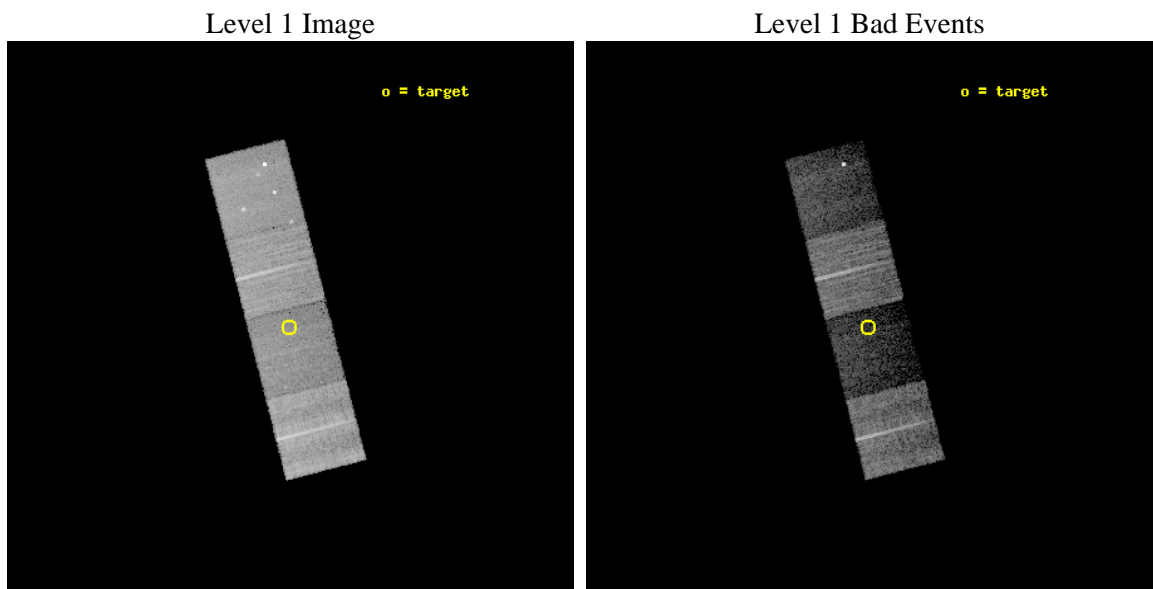
seq_num	701452	Sequence number
obs_id	7784	Observation id
title	An Exploratory Chandra Survey of Weak-Line Quasars from the Sloan Digital Sky Survey	Proposal title
observer	Prof. William Brandt	Principal investigator
object	SDSS J1302+0030	Source name
dtcycle	0	&#160
cycle	P	events from which exps? Prim/Second/Both
ra_targ	195.567083	Observer's specified target RA [deg]
dec_targ	0.508917	Observer's specified target Dec [deg]
ra_nom	195.56560575269	Nominal RA [deg]
dec_nom	0.51351272614981	Nominal Dec [deg]
roll_nom	75.573521765711	Nominal Roll [deg]
revision	3	Processing version of data
ontime	10642.300081849	Sum of GTIs [s]
livetime	10503.250596532	Livetime [s]
ontime5	10642.300081849	Sum of GTIs [s]
ontime6	10642.300081849	Sum of GTIs [s]
ontime7	10642.300081849	Sum of GTIs [s]
ontime8	10642.300081849	Sum of GTIs [s]
l2events	67452	Number of level 2 events



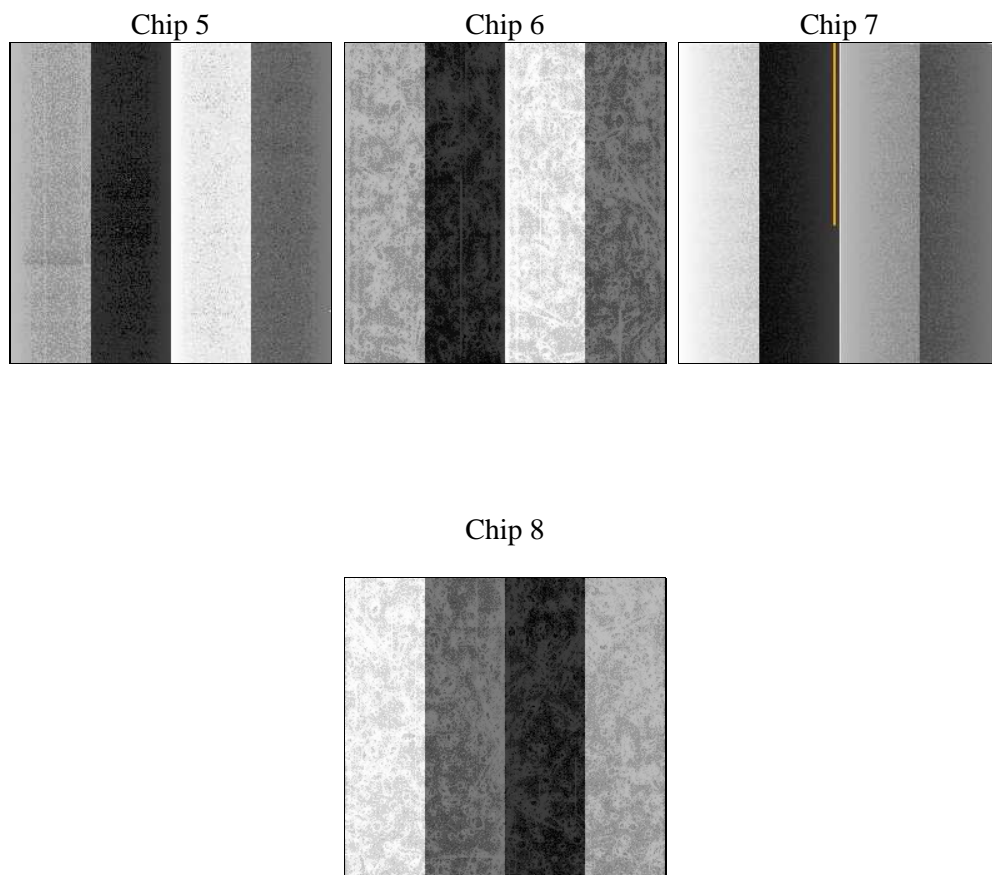
## 2 OBI

### 2.1 OBI

#### 2.1.1 Images



#### 2.1.2 Bias



### 2.1.3 Parameters

obi_num	0	Obi number	sched_exp_time	10500.000000	[s] Scheduled observation exposure time
ascdsver	8.4.4	Processing system revision	ontime	10642.300081849	Sum of GTIs [s]
caldsver	4.4.9	&#160	ontime5	10642.300081849	Sum of GTIs [s]
date	2012-04-20T14:39:54	Date and time of file creation	ontime6	10642.300081849	Sum of GTIs [s]
revision	3	Processing version of data	ontime7	10642.300081849	Sum of GTIs [s]
			ontime8	10642.300081849	Sum of GTIs [s]
			l1events	266526	Number of level 1 events

### 2.1.4 Events

	ccd 5	ccd 6	ccd 7	ccd 8
level 1 events	66208	71950	41247	87121
rejected events	27346	65690	17723	64314
rejected %	41%	91%	42%	73%

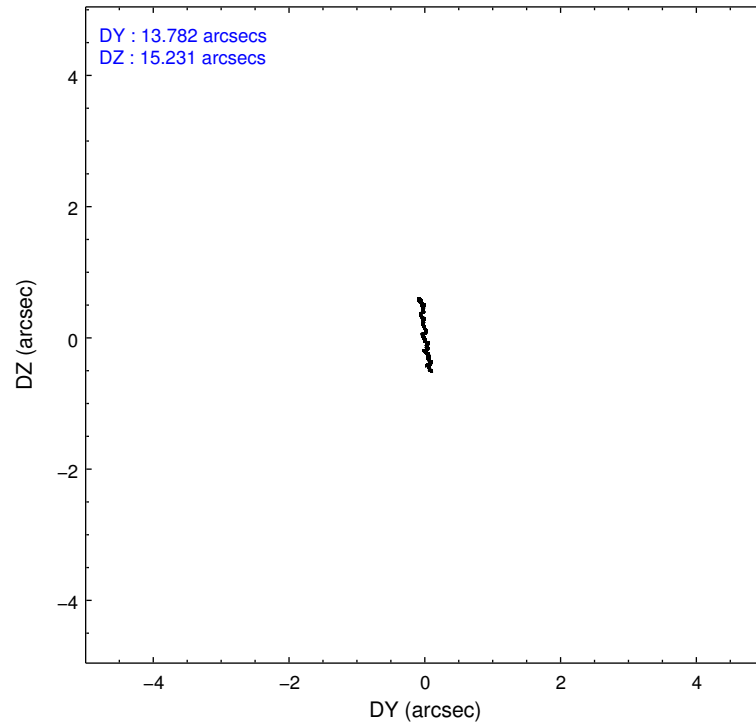
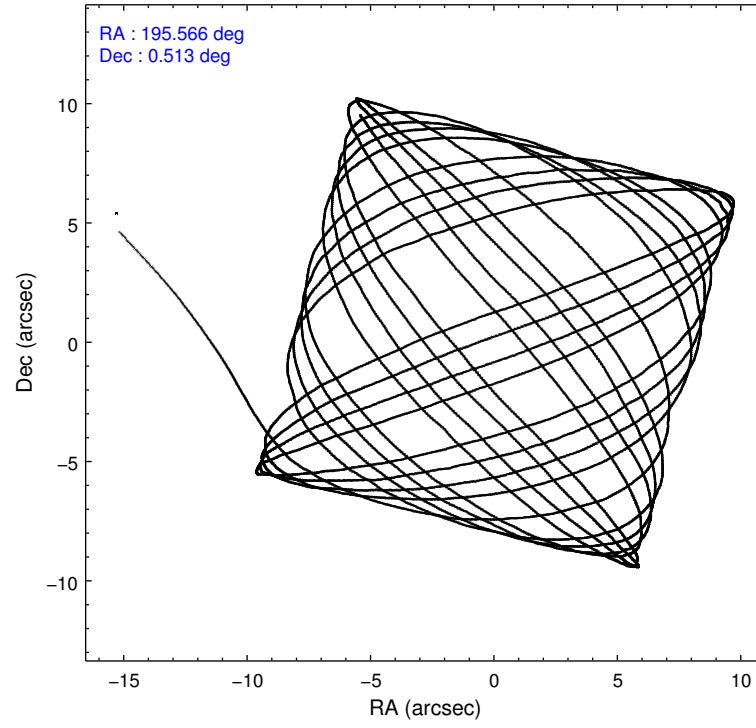
	ccd 5	ccd 6	ccd 7	ccd 8
grade 0 events	6620	2578	3389	6736
	9%	3%	8%	7%
grade 1 events	332	35	96	73
	0%	0%	0%	0%
grade 2 events	12851	1442	5762	5400
	19%	2%	13%	6%
grade 3 events	2044	711	2459	2579
	3%	0%	5%	2%
grade 4 events	1897	704	2456	2458
	2%	0%	5%	2%
grade 5 events	5953	1387	4226	2327
	8%	1%	10%	2%
grade 6 events	16658	1025	10192	6314
	25%	1%	24%	7%
grade 7 events	19853	64068	12667	61234
	29%	89%	30%	70%

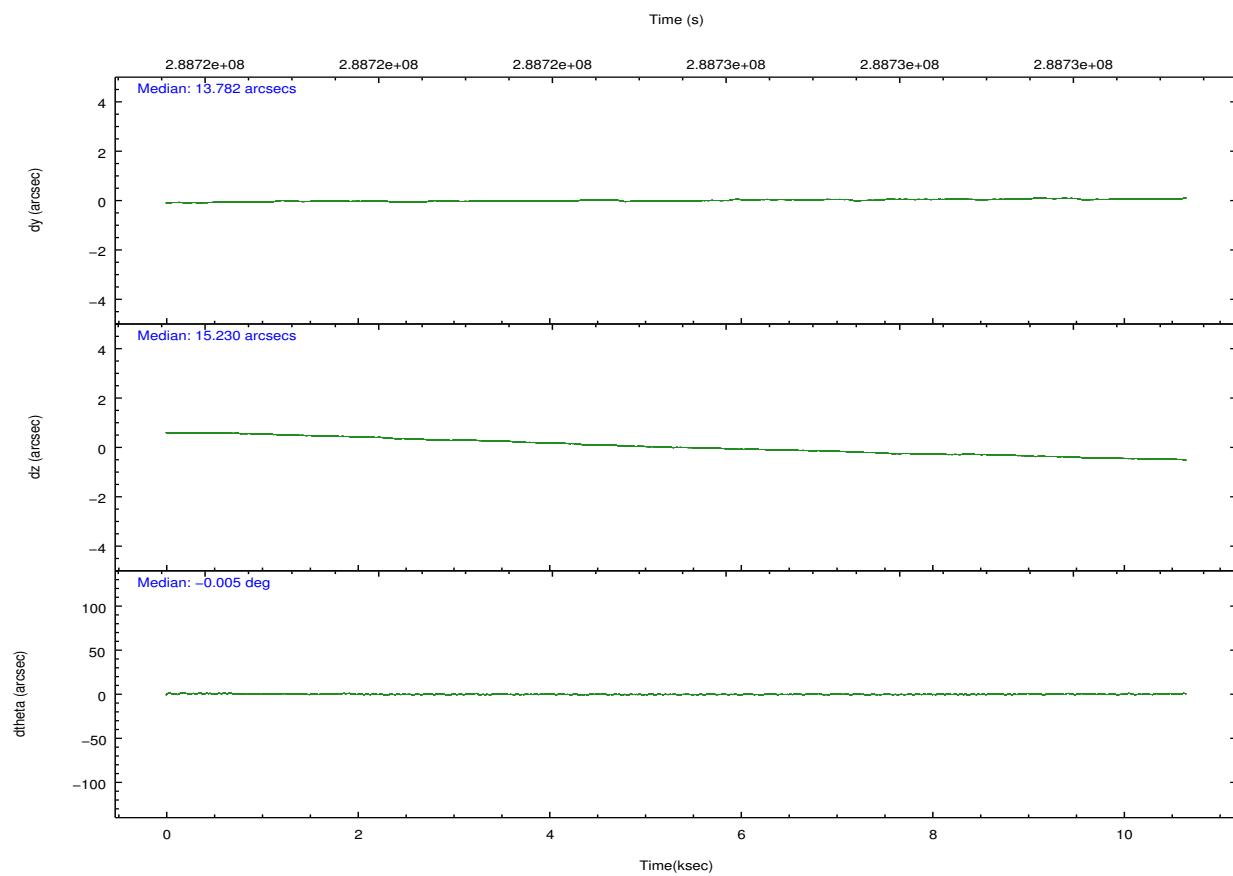
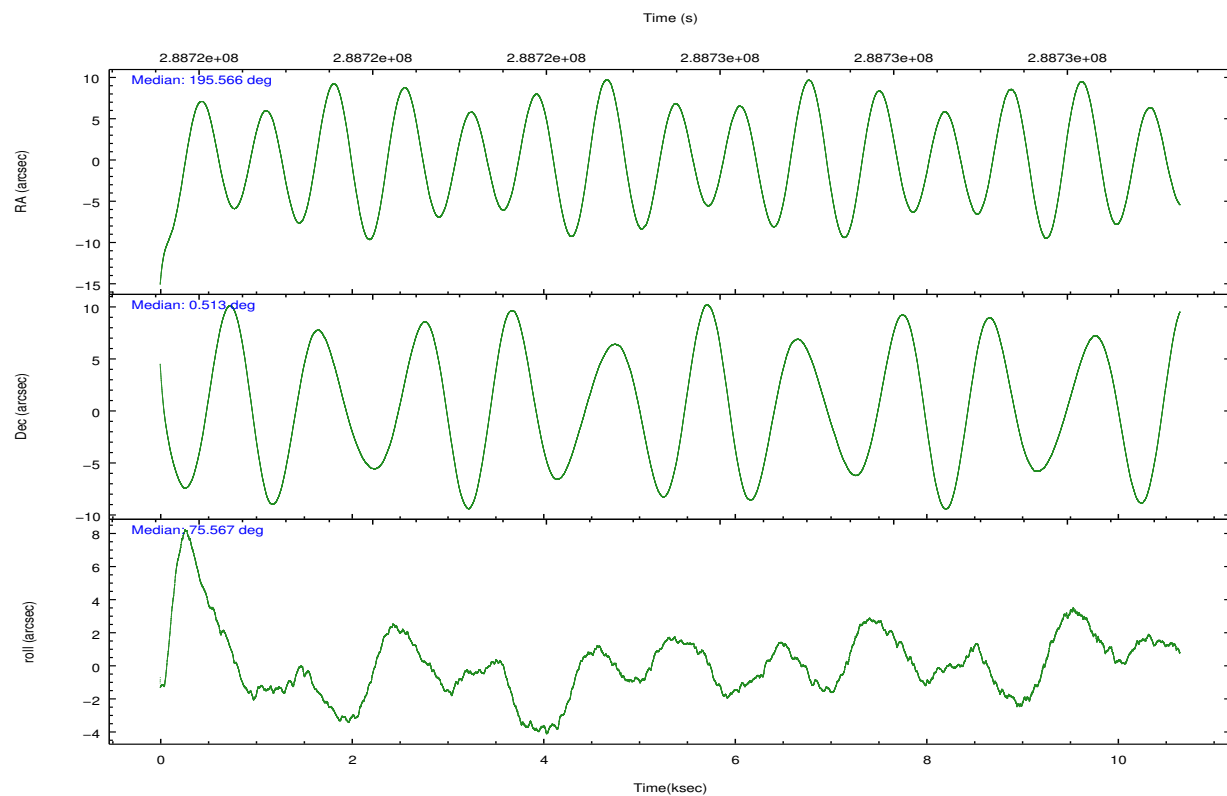


## 2.2 Compared Parameters

Parameter	Planned	Actual	Parameter	Planned	Actual
Instrument	ACIS	ACIS	Obspar format version number	7	7
Detector	ACIS-5678	ACIS-5678	Obspar file type	PREDICTED	ACTUAL
Grating	NONE	NONE	Obspar update status	NONE	UPDATED
Data mode	FAINT	FAINT	Number of optional ACIS chips dropped	0	0
Observation mode	POINTING	POINTING	On-chip summing requested	N	N
[deg] Pointing RA	195.573352	195.5656057526938	Subarray requested	NONE	NONE
[deg] Pointing Dec	0.487311	0.5135127261498134	Alternating exposures requested	N	N
[deg] Pointing Roll	75.416823	75.57352176571092	[s] Primary exposure time	0.000000	3.1
[mm] SIM focus pos	-0.684267	-0.6828225247311905			
[mm] SIM defocus	0	0.001444936568705701			
[mm] SIM translation stage pos	-190.132523	-190.1425803651734			
[mm] SIM translation stage offset	0	0.01005778216563158			
[s] Observation start time (MET)	288720240.184000	288719163.21661			
Observation start date	2007-02-24T16:02:55	2007-02-24T15:46:03			
[s] Observation end time (MET)	288730740.184000	288730960.96717			
Observation end date	2007-02-24T18:57:55	2007-02-24T19:02:40			
Read mode	TIMED	TIMED			

## 2.3 Aspect



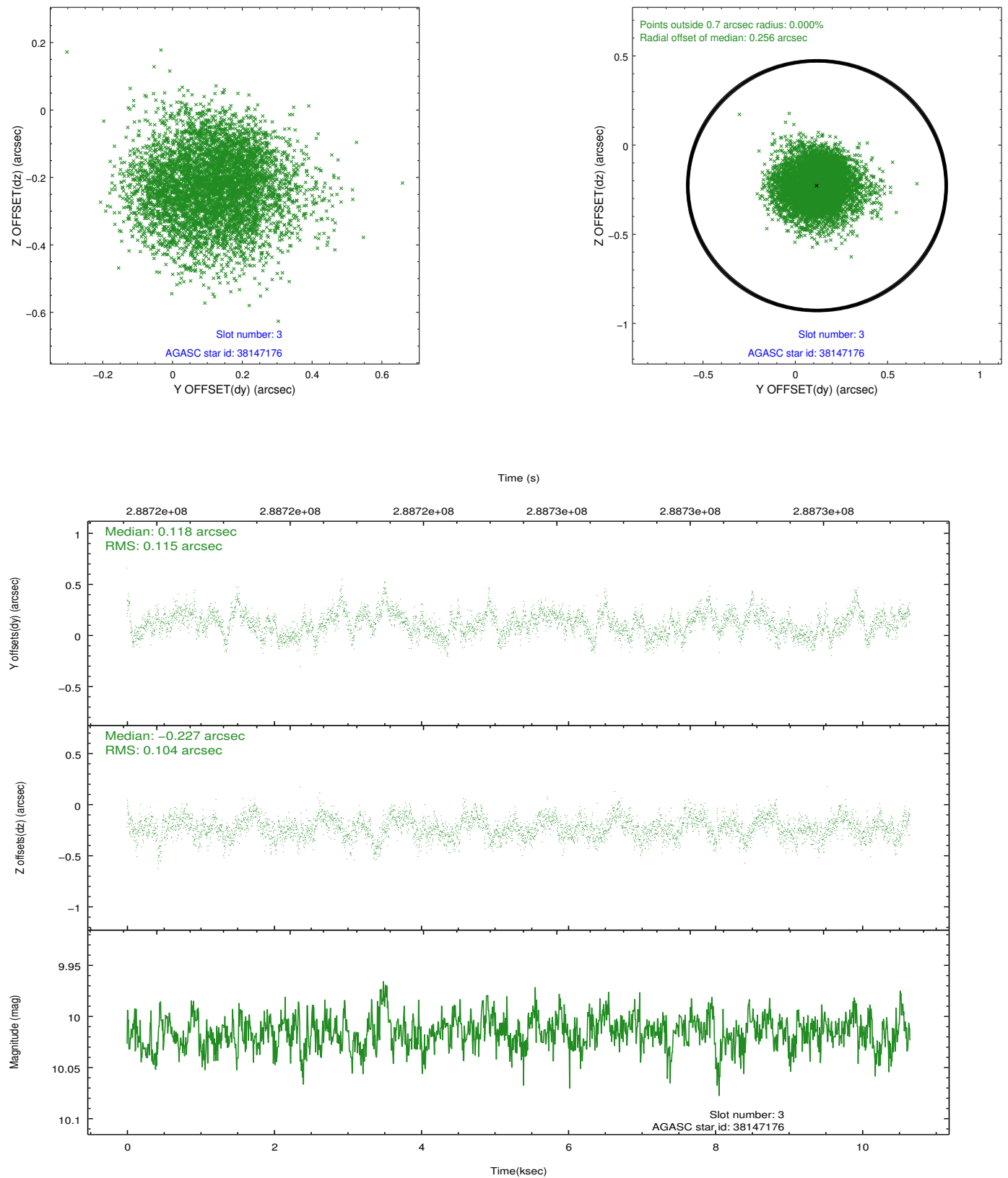


### Slot Statistics

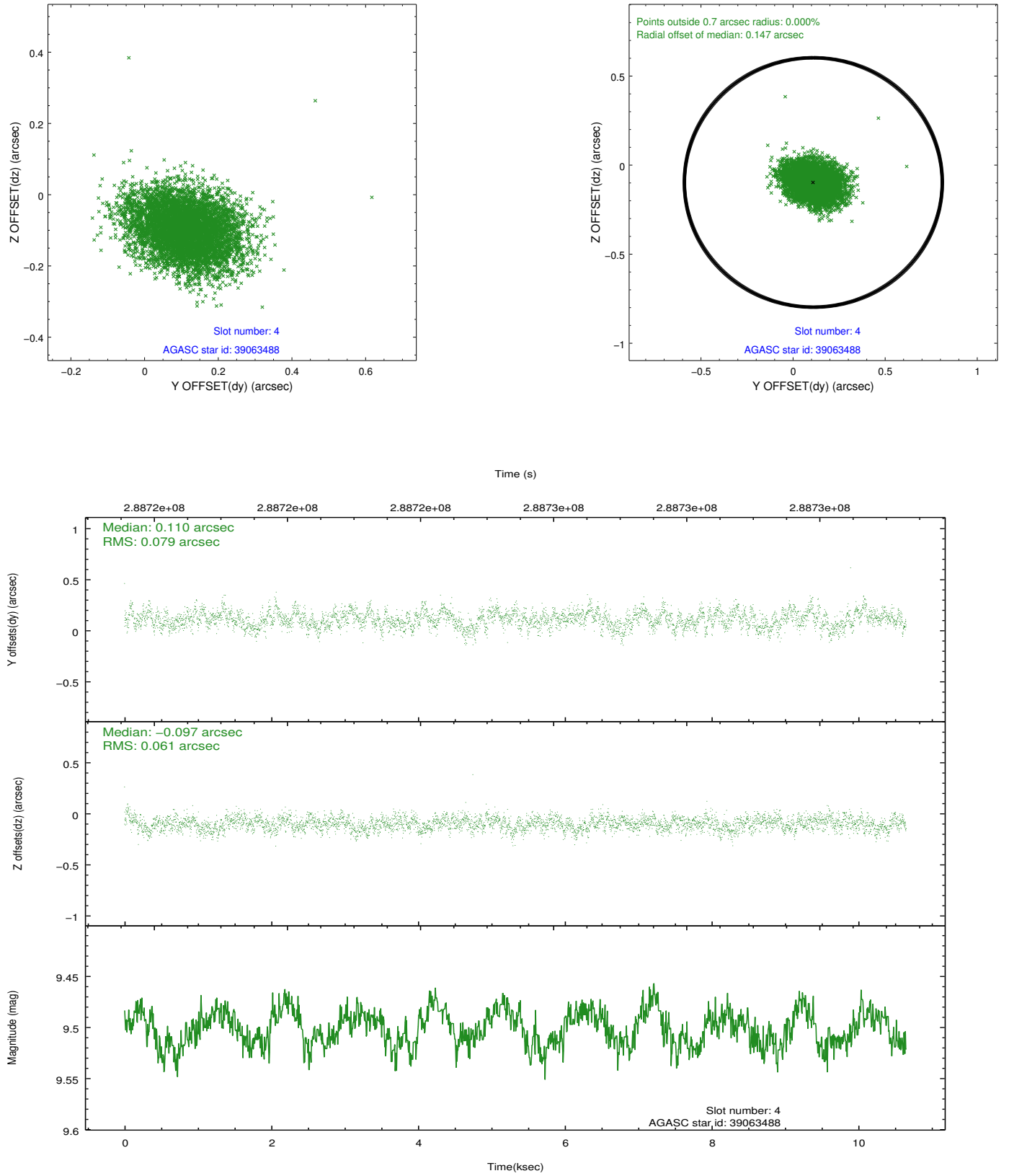
slot	status	id	mag	n_pts	med_dy	med_dz	dr1	dr2	ra	dec	mean_y	mean_z
0	FID	ACIS-S-2	7.09	2598	-0.066	-0.038	0.009	0.015	0.000000	0.000000	-766.77	-1736.65
1	FID	ACIS-S-4	7.20	2598	0.206	0.043	0.007	0.012	0.000000	0.000000	2146.53	171.44
2	FID	ACIS-S-5	7.23	2598	-0.171	0.005	0.008	0.012	0.000000	0.000000	-1819.11	165.58
3	GUIDE	38147176	10.02	5185	0.118	-0.227	0.166	0.259	194.928487	0.307485	-1210.70	2083.50
4	GUIDE	39063488	9.50	5194	0.110	-0.097	0.105	0.171	195.608113	0.950549	1645.46	299.45
5	GUIDE	39064152	6.99	5195	-0.096	0.335	0.076	0.117	196.185427	0.295130	-114.69	-2305.81
6	GUIDE	39064944	8.03	5196	-0.008	-0.063	0.077	0.118	195.513486	0.405733	-338.08	134.08
7	GUIDE	39065216	8.38	5194	-0.122	0.053	0.069	0.111	195.117040	1.247762	2235.97	2279.06

## 2.4 Star Slots

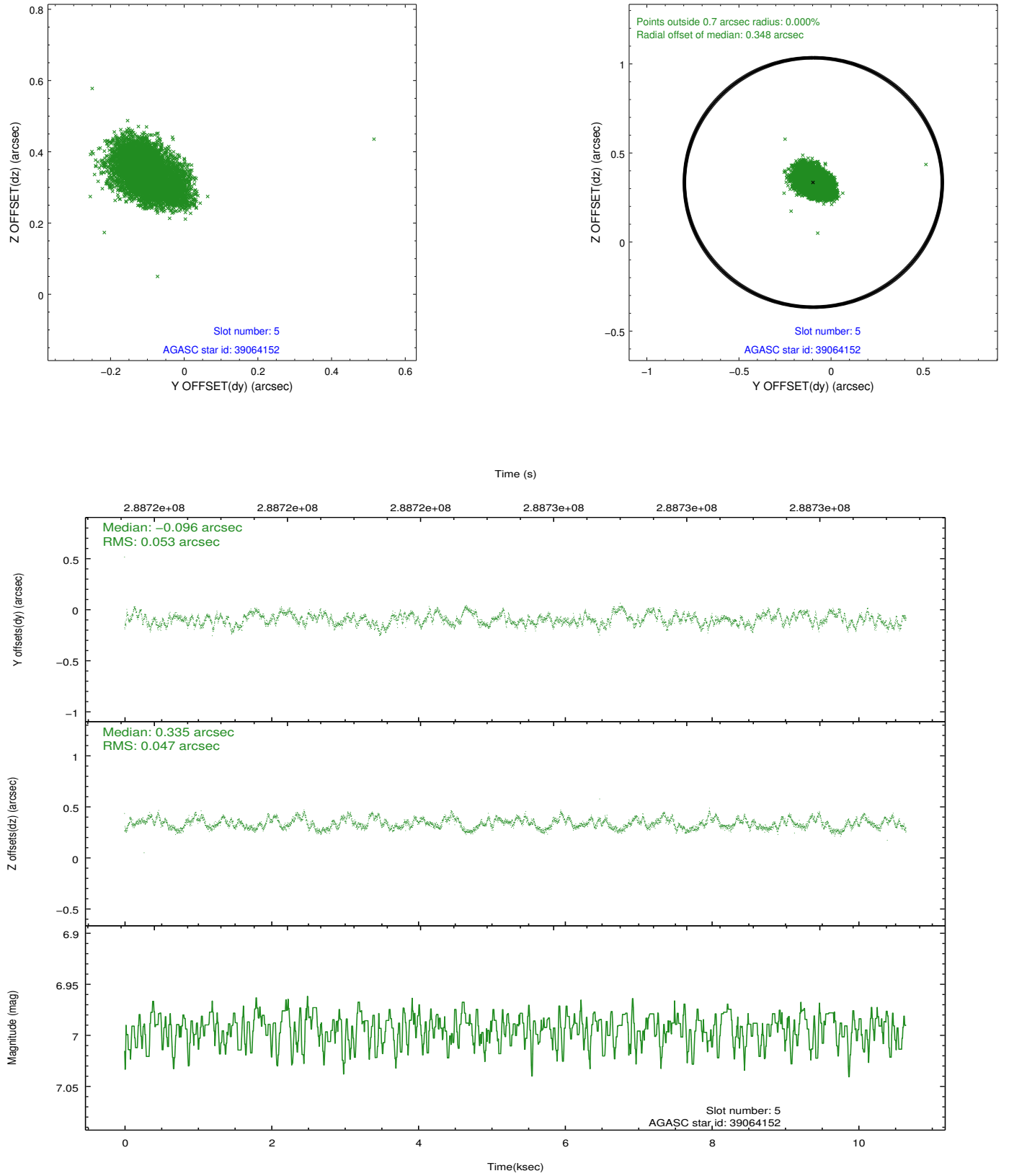
### 2.4.1 Slot 3



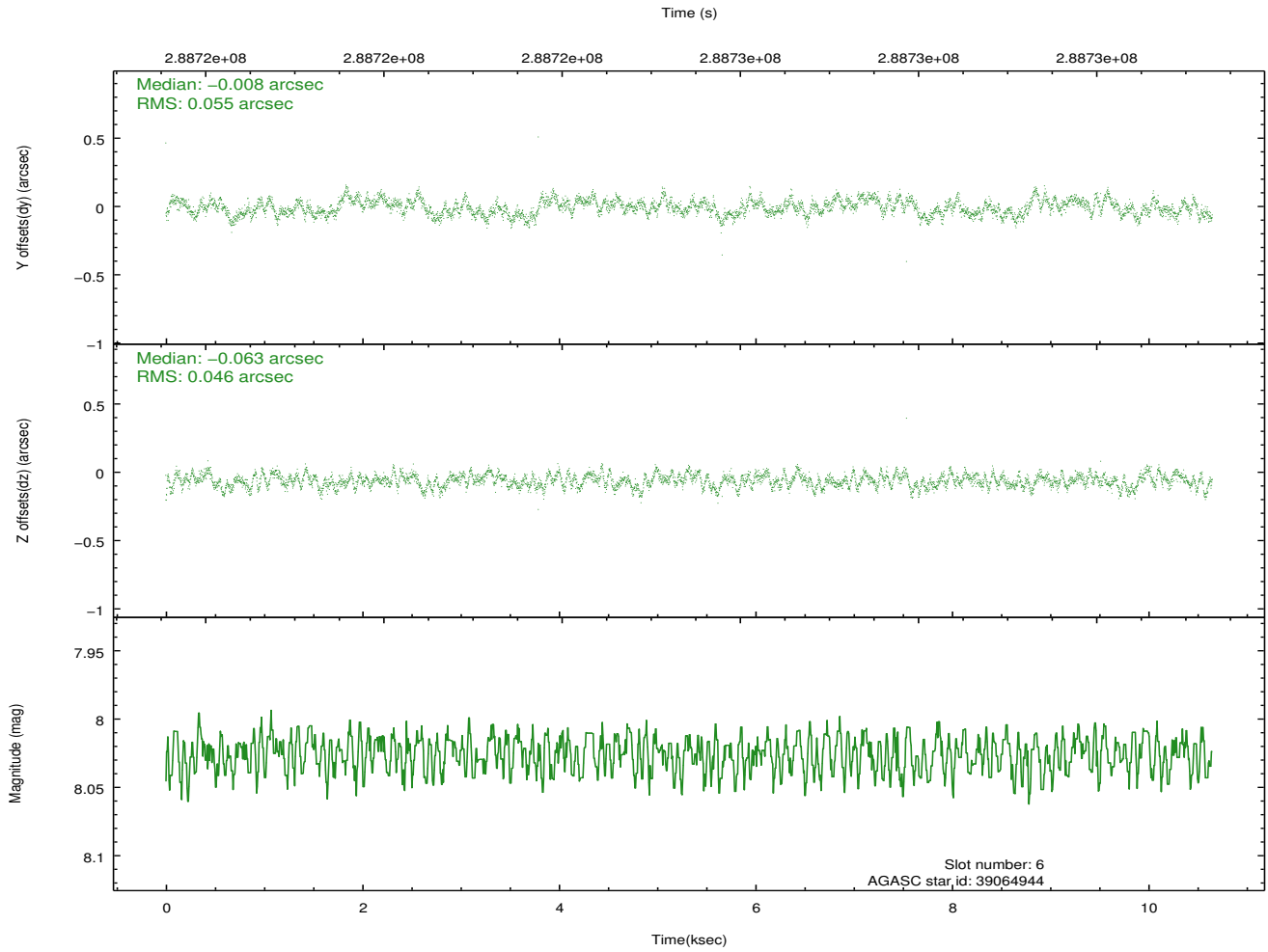
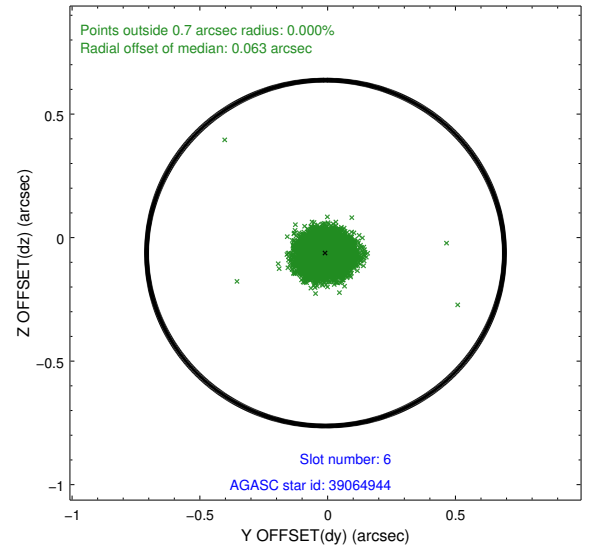
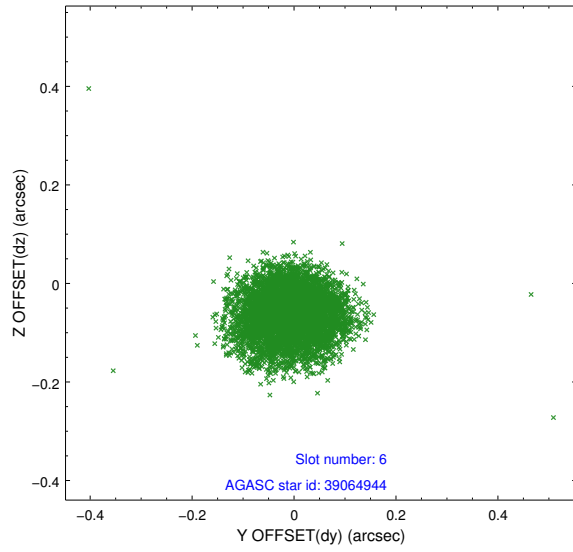
## 2.4.2 Slot 4



### 2.4.3 Slot 5

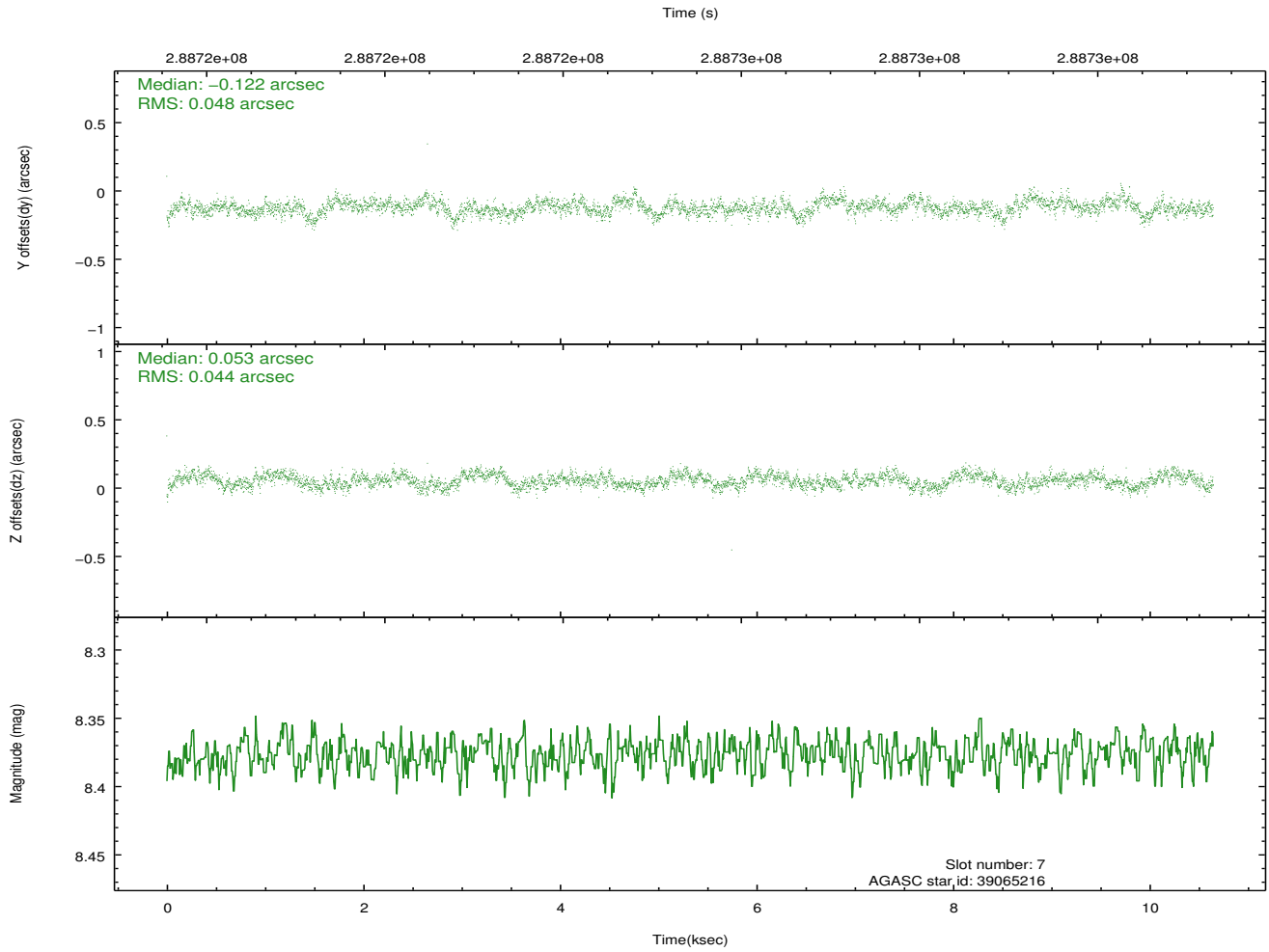
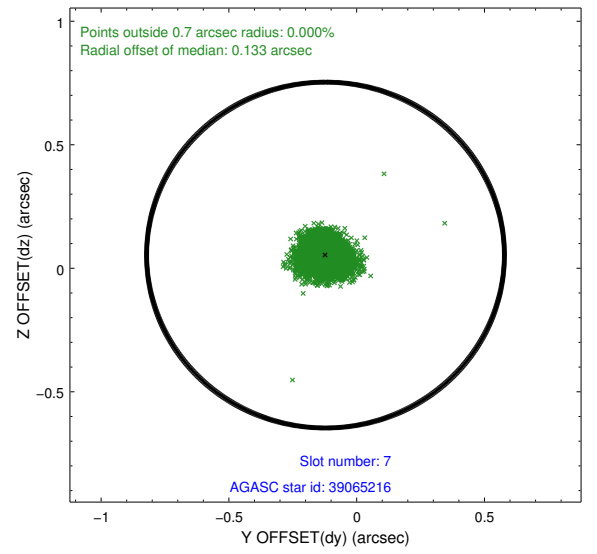
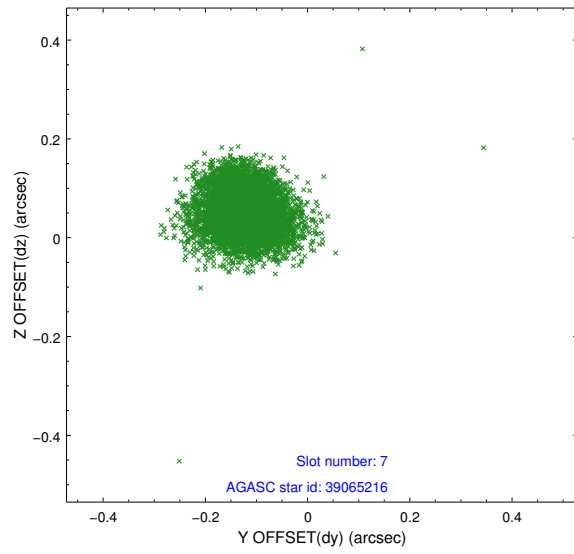


## 2.4.4 Slot 6



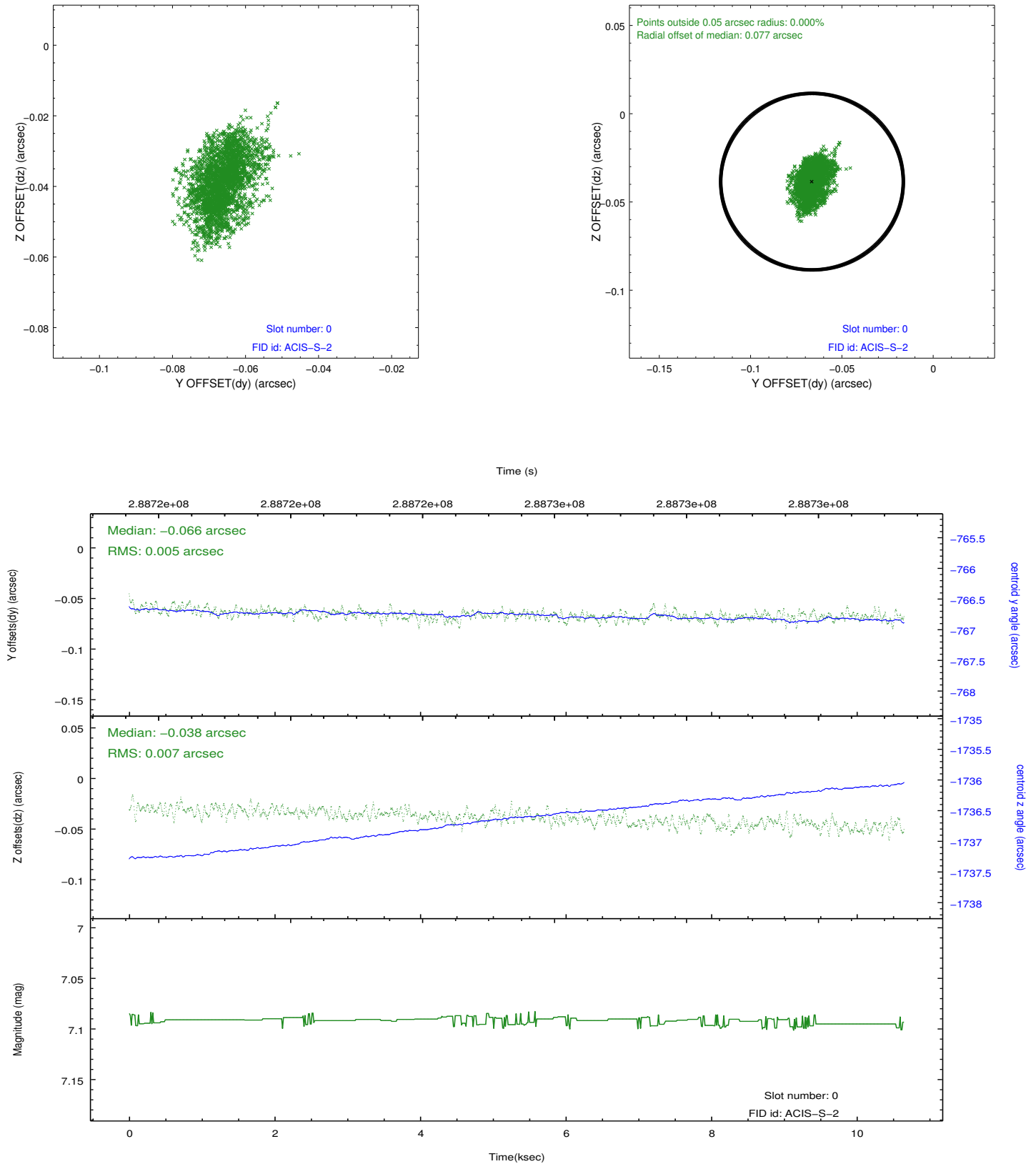


### 2.4.5 Slot 7

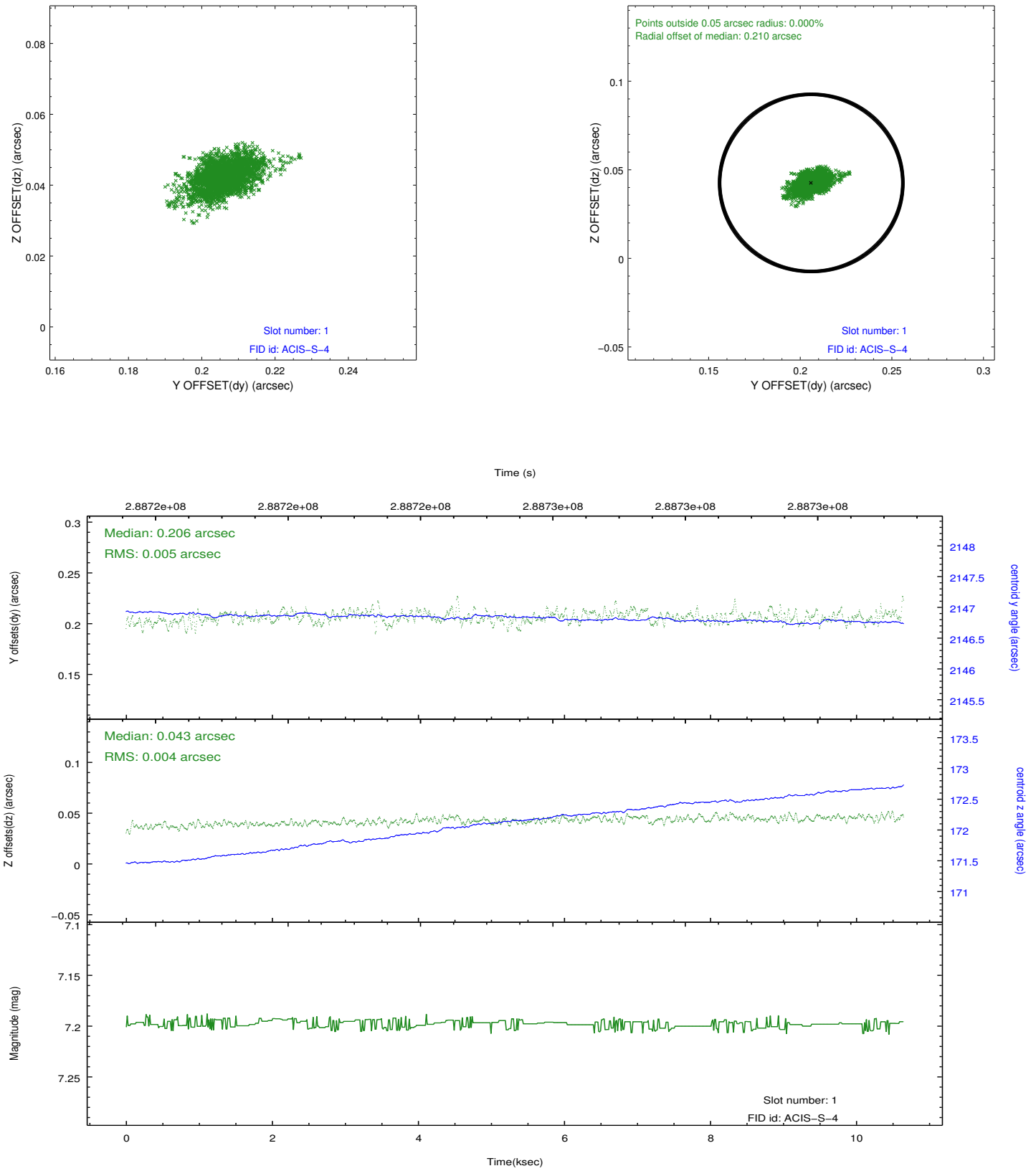


## 2.5 FID Slots

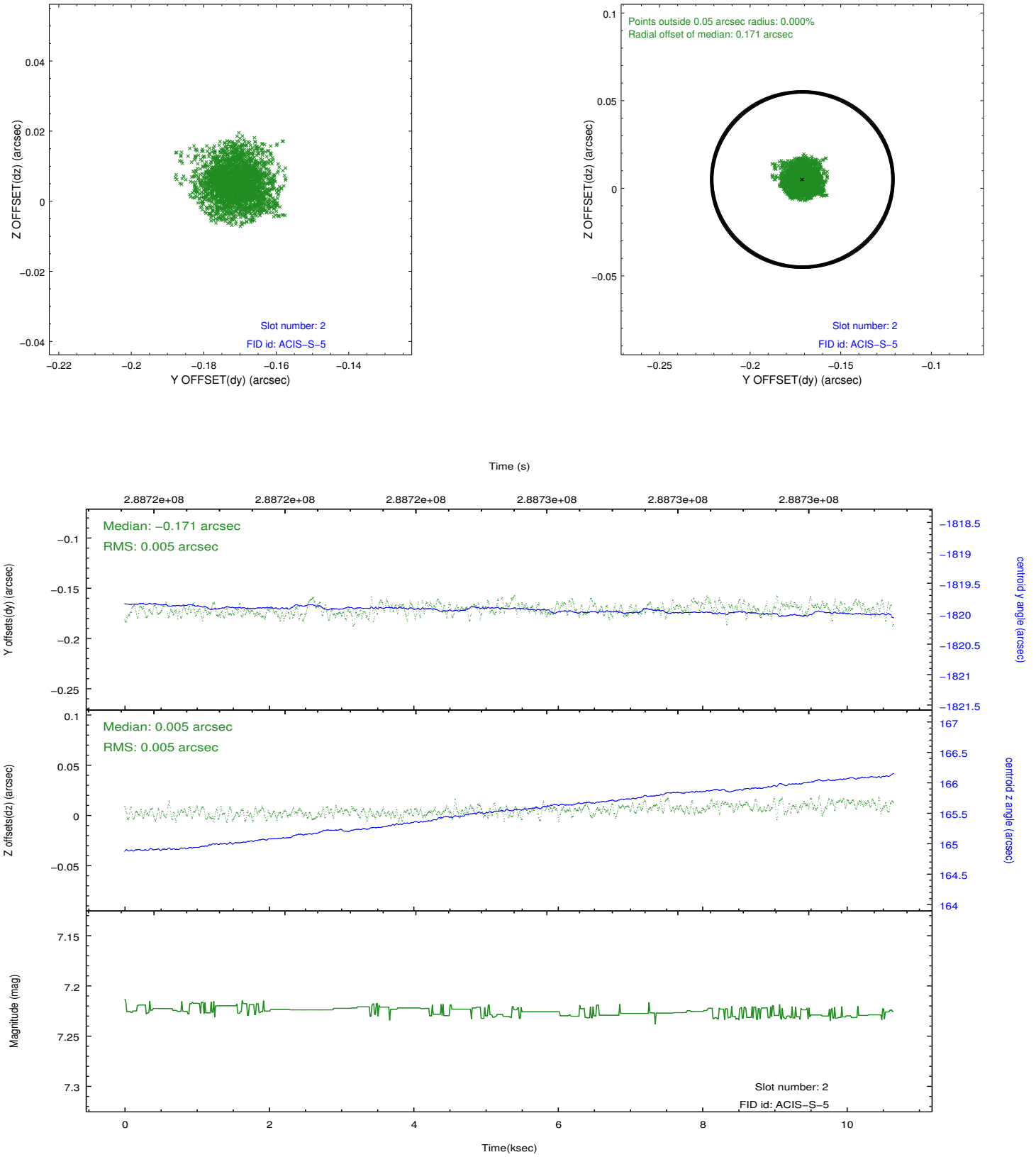
### 2.5.1 Slot 0



## 2.5.2 Slot 1



### 2.5.3 Slot 2



## A Summary

### A.1 Status

V&V Scientist	Beth Sundheim
V&V Date (YYYY-MM-DD)	2012.04.22
V&V Edition	1
V&V Disposition and Status	OK
V&V Charge Time	10.6423

### A.2 Comments