

V&V Reference Report

L2 ASCDS Version : 8.4.4

Observation 7748 - L2 Version 2
Chandra X-Ray Center

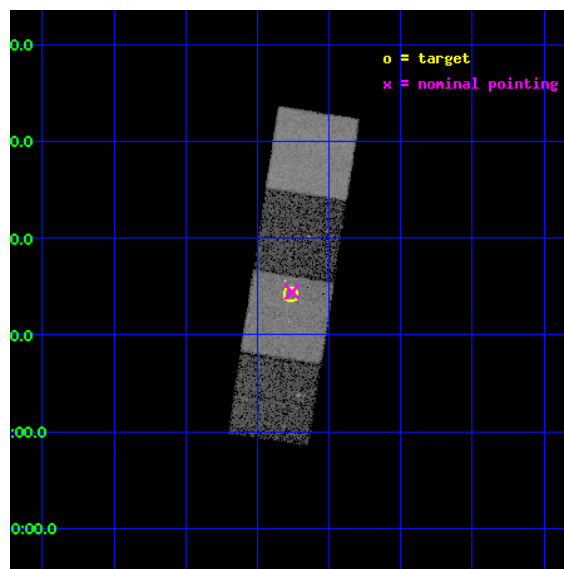
L2 Processing Date : May 1 2012

Contents

1	Front	2
2	OBI	3
2.1	OBI	3
2.1.1	Images	3
2.1.2	Bias	3
2.1.3	Parameters	4
2.1.4	Events	4
2.2	Compared Parameters	5
2.3	Aspect	6
2.4	Star Slots	9
2.4.1	Slot 3	9
2.4.2	Slot 4	10
2.4.3	Slot 5	11
2.4.4	Slot 6	12
2.4.5	Slot 7	13
2.5	FID Slots	14
2.5.1	Slot 0	14
2.5.2	Slot 1	15
2.5.3	Slot 2	16
A	Summary	17
A.1	Status	17
A.2	Comments	17

1 Front

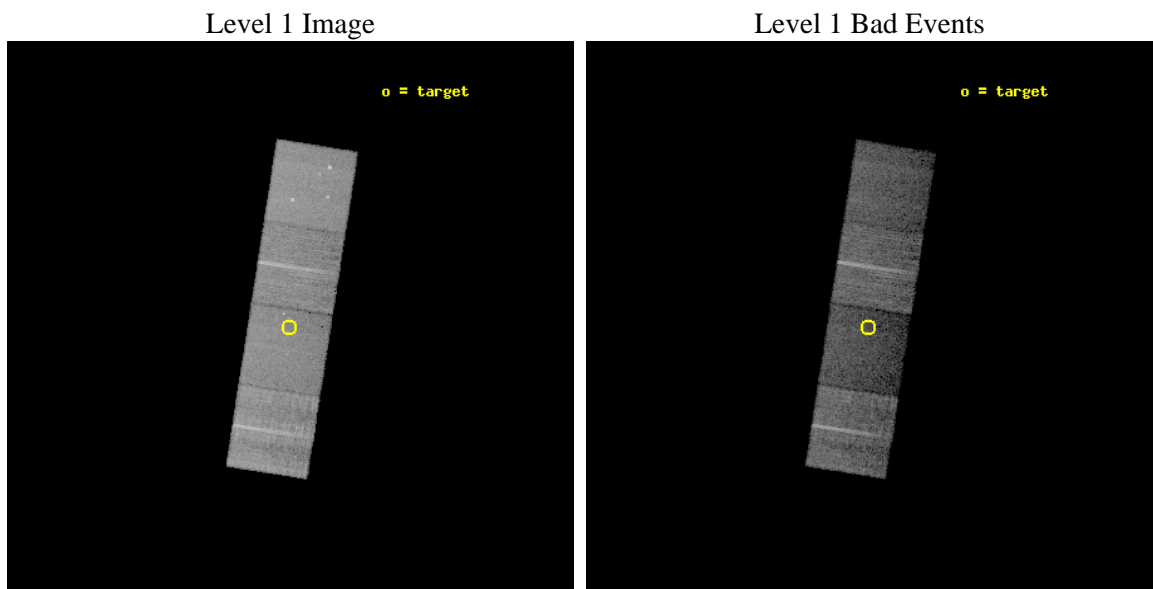
seq_num	701416	Sequence number
obs_id	7748	Observation id
title	Probing heavy obscuration in optically selected Type 2 quasar candidates	Proposal title
observer	Dr Cristian Vignali	Principal investigator
object	SDSS J013416.34+001413.6	Source name
dtcycle	0	
cycle	P	events from which exps? Prim/Second/Both
ra_targ	23.567917	Observer's specified target RA [deg]
dec_targ	0.237111	Observer's specified target Dec [deg]
ra_nom	23.564740998347	Nominal RA [deg]
dec_nom	0.24082981827894	Nominal Dec [deg]
roll_nom	98.886178488138	Nominal Roll [deg]
revision	2	Processing version of data
ontime	10040.900077224	Sum of GTIs [s]
livetime	9909.7083257118	Livetime [s]
ontime5	10040.900077224	Sum of GTIs [s]
ontime6	10040.900077224	Sum of GTIs [s]
ontime7	10040.900077224	Sum of GTIs [s]
ontime8	10037.759156406	Sum of GTIs [s]
l2events	96073	Number of level 2 events



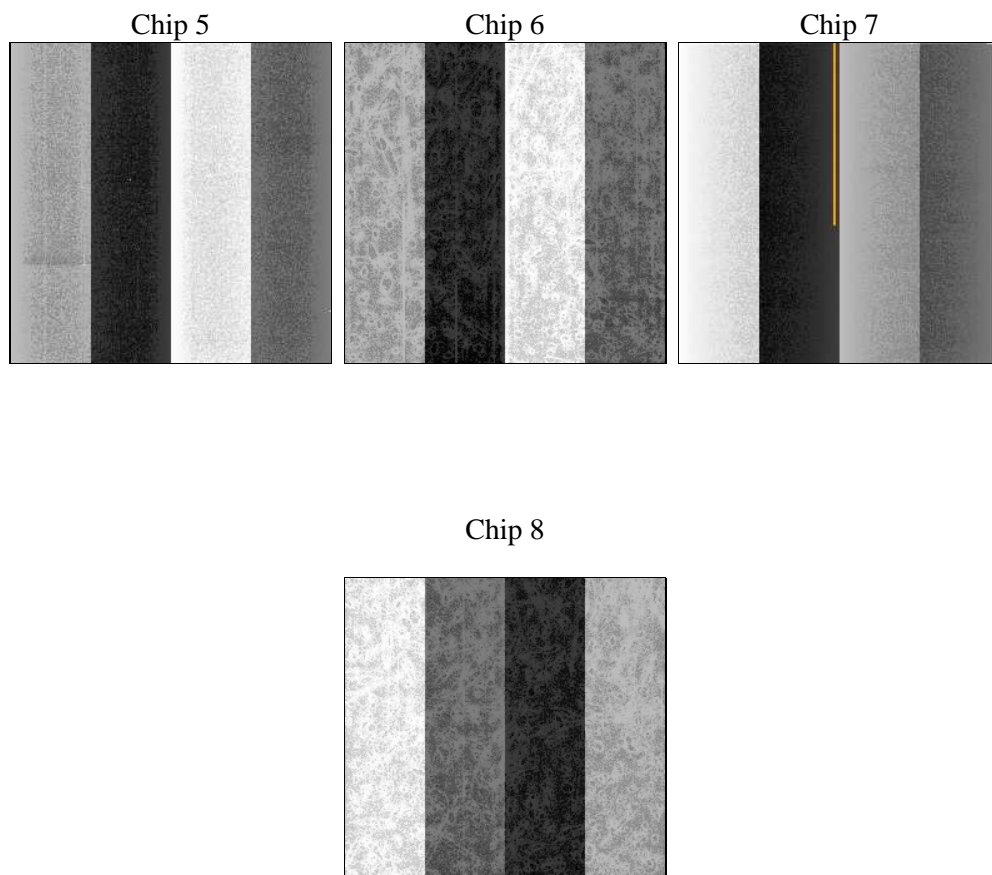
2 OBI

2.1 OBI

2.1.1 Images



2.1.2 Bias



2.1.3 Parameters

obi_num	0	Obi number	sched_exp_time	10000.000000	[s] Scheduled observation exposure time
ascdsver	8.4.4	Processing system revision	ontime	10040.900077224	Sum of GTIs [s]
caldsver	4.4.9	 	ontime5	10040.900077224	Sum of GTIs [s]
date	2012-05-01T04:13:45	Date and time of file creation	ontime6	10040.900077224	Sum of GTIs [s]
revision	2	Processing version of data	ontime7	10040.900077224	Sum of GTIs [s]
			ontime8	10037.759156406	Sum of GTIs [s]
			l1events	342701	Number of level 1 events

2.1.4 Events

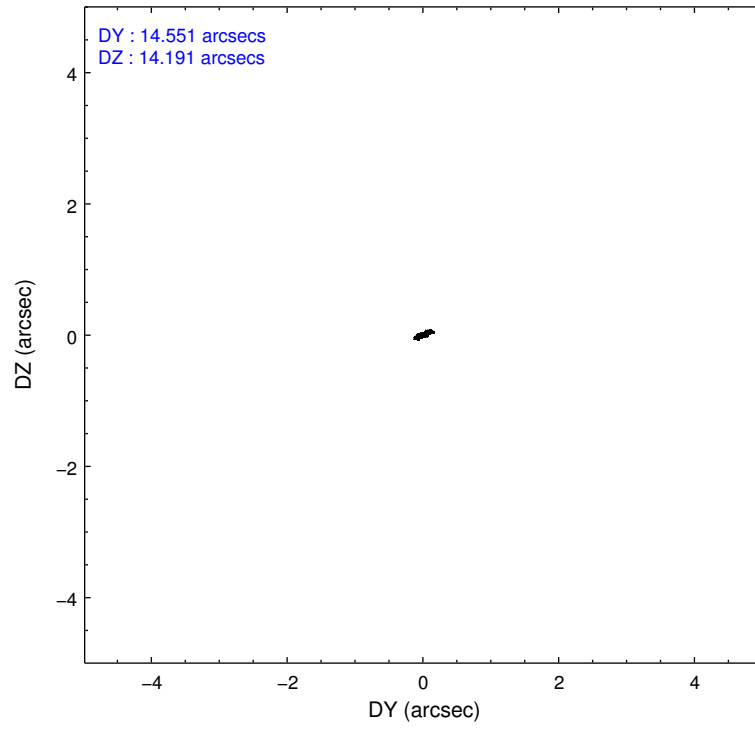
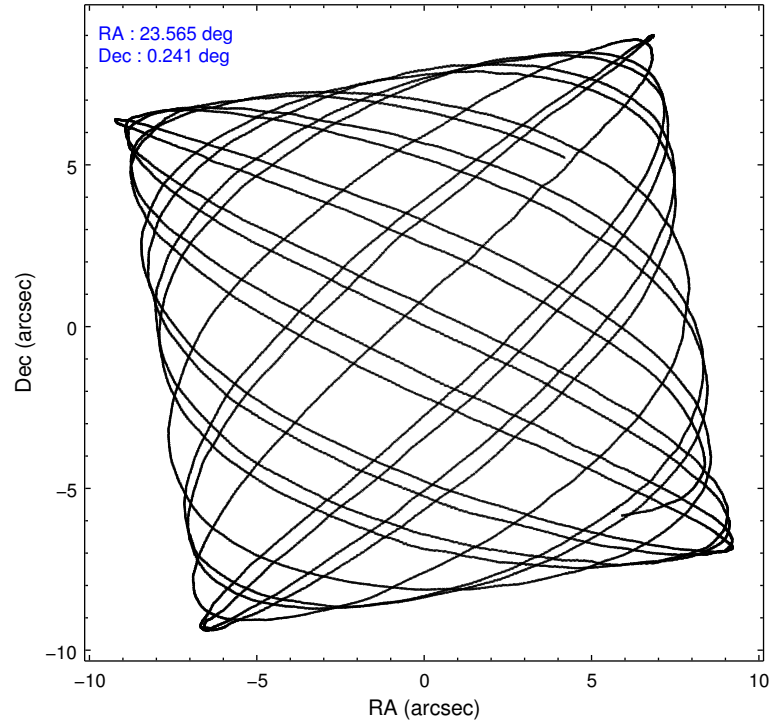
	ccd 5	ccd 6	ccd 7	ccd 8
level 1 events	95046	78649	73185	95821
rejected events	44553	71003	36541	72050
rejected %	46%	90%	49%	75%

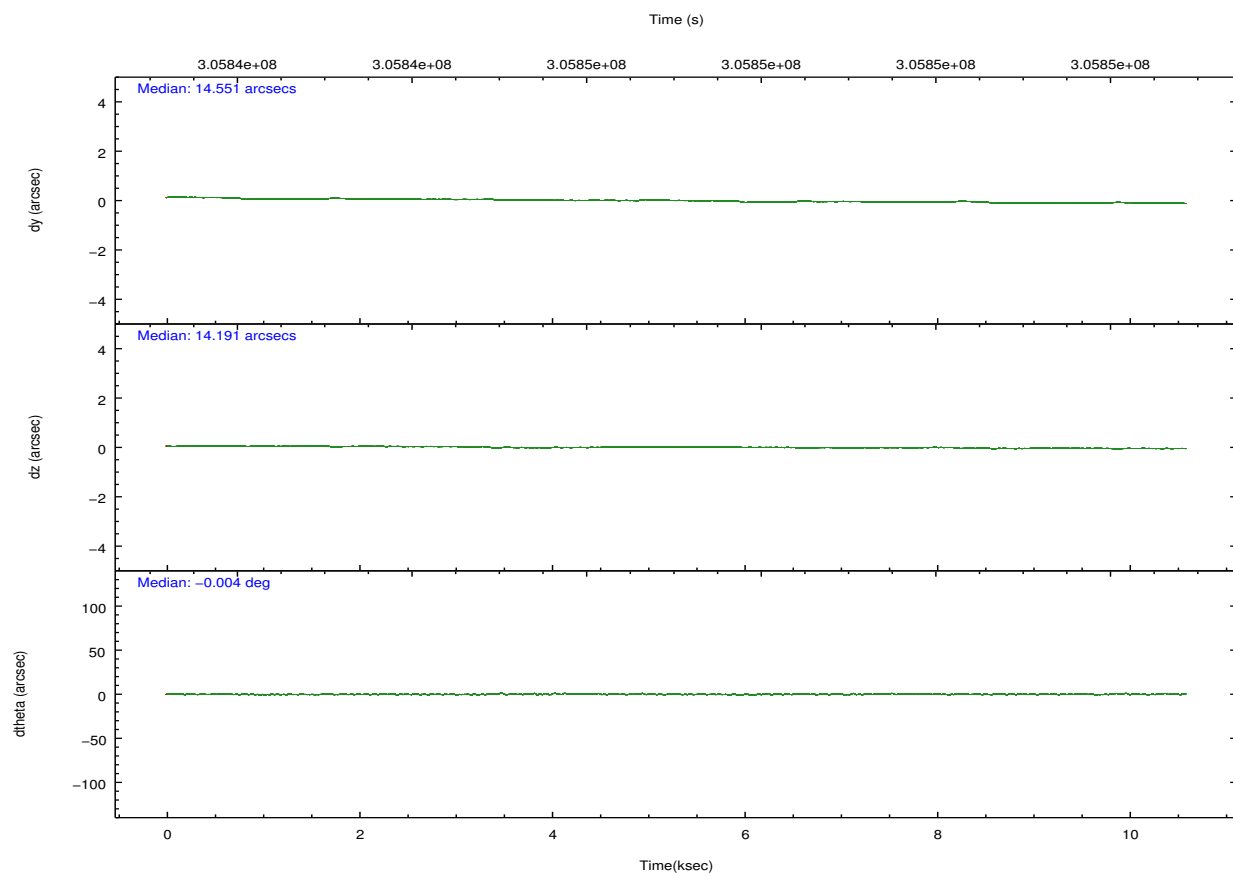
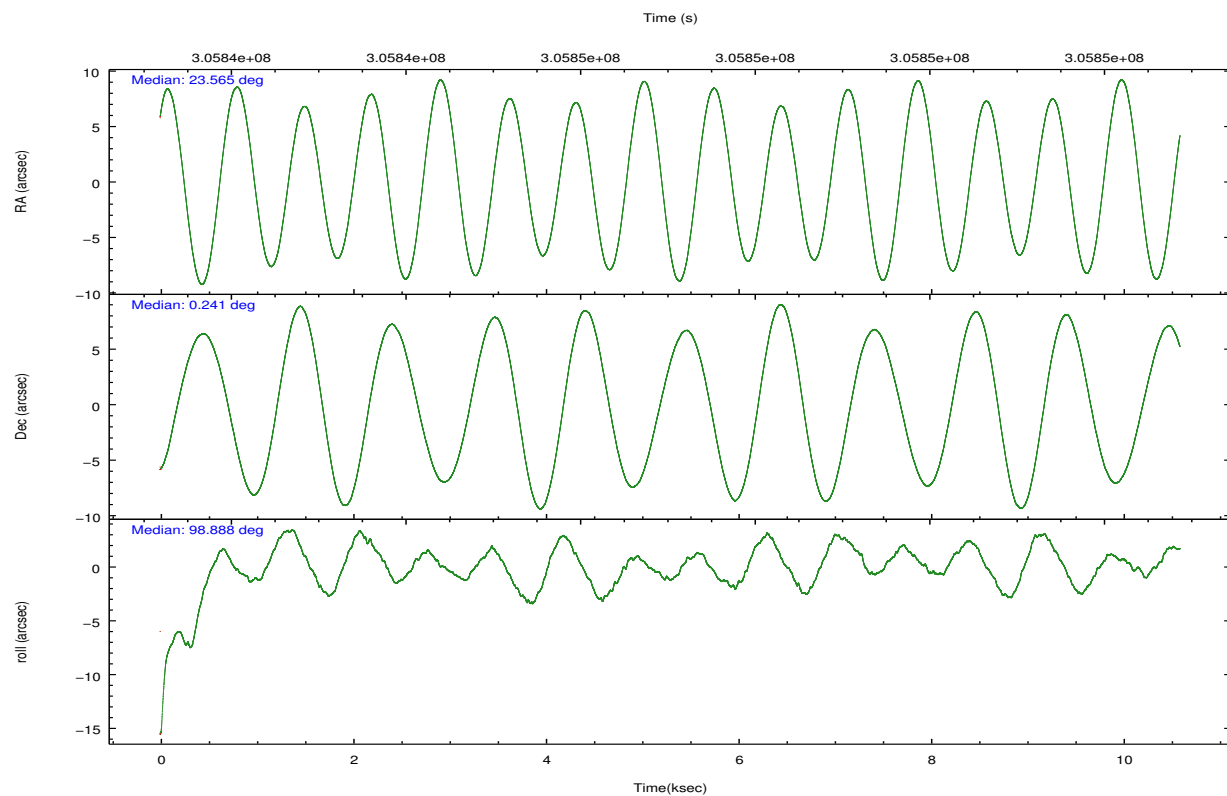
	ccd 5	ccd 6	ccd 7	ccd 8
grade 0 events	6127	2799	4048	6523
	6%	3%	5%	6%
grade 1 events	201	38	118	78
	0%	0%	0%	0%
grade 2 events	15053	1719	7772	5691
	15%	2%	10%	5%
grade 3 events	2156	811	3436	2557
	2%	1%	4%	2%
grade 4 events	2065	820	3404	2401
	2%	1%	4%	2%
grade 5 events	7707	2723	7904	4066
	8%	3%	10%	4%
grade 6 events	25120	1501	18008	6605
	26%	1%	24%	6%
grade 7 events	36617	68238	28495	67900
	38%	86%	38%	70%

2.2 Compared Parameters

Parameter	Planned	Actual	Parameter	Planned	Actual
Instrument	ACIS	ACIS	Obspar format version number	7	7
Detector	ACIS-5678	ACIS-5678	Obspar file type	PREDICTED	ACTUAL
Grating	NONE	NONE	Obspar update status	NONE	UPDATED
Data mode	VFAINT	VFAINT	Number of optional ACIS chips dropped	0	0
Observation mode	POINTING	POINTING	On-chip summing requested	N	N
[deg] Pointing RA	23.582221	23.56474099834667	Subarray requested	NONE	NONE
[deg] Pointing Dec	0.219751	0.2408298182789417	Alternating exposures requested	N	N
[deg] Pointing Roll	98.729485	98.88617848813831	[s] Primary exposure time	0.000000	3.1
[mm] SIM focus pos	-0.684267	-0.6828225247311905			
[mm] SIM defocus	0	0.001444936568705701			
[mm] SIM translation stage pos	-190.132523	-190.1400660498719			
[mm] SIM translation stage offset	0	0.00754346686406393			
[s] Observation start time (MET)	305842306.184000	305841237.07264			
Observation start date	2007-09-10T20:10:41	2007-09-10T19:53:57			
[s] Observation end time (MET)	305852306.184000	305853120.41071			
Observation end date	2007-09-10T22:57:21	2007-09-10T23:12:00			
Read mode	TIMED	TIMED			

2.3 Aspect



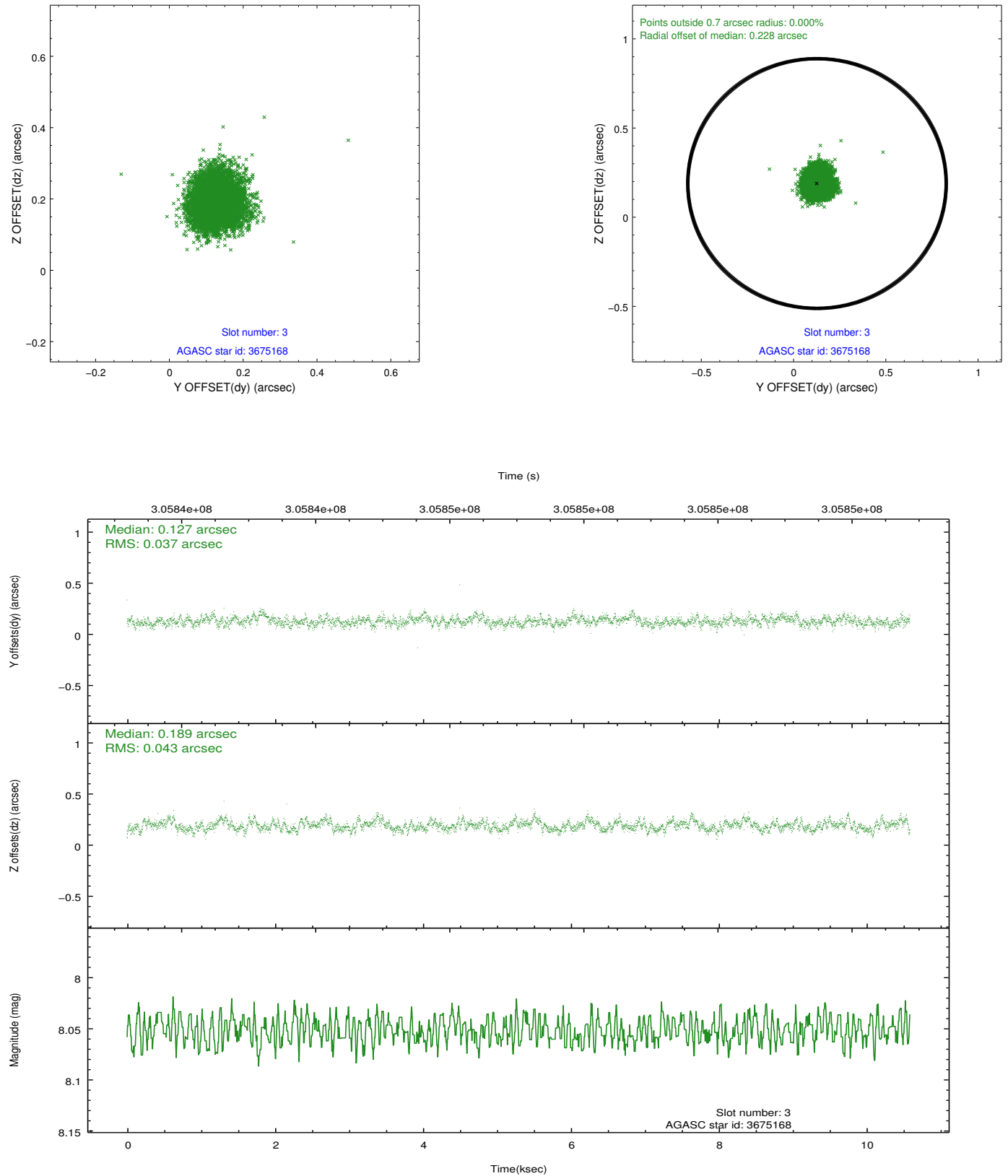


Slot Statistics

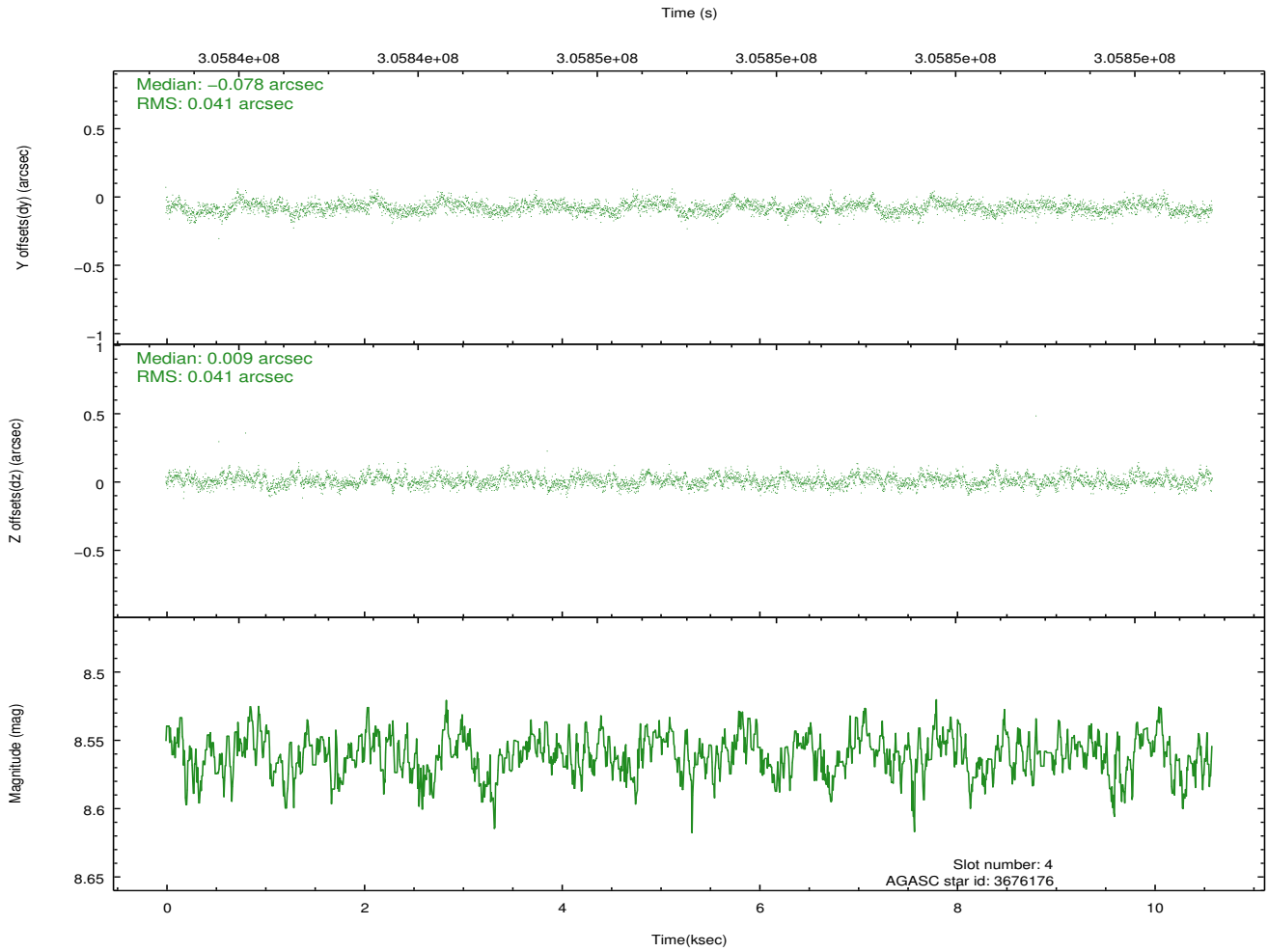
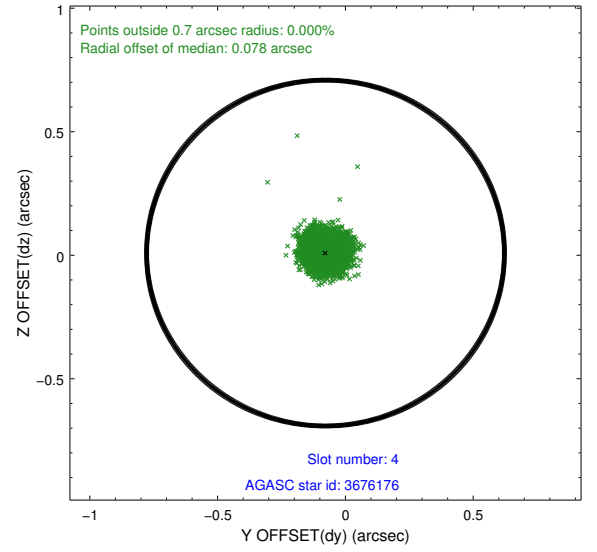
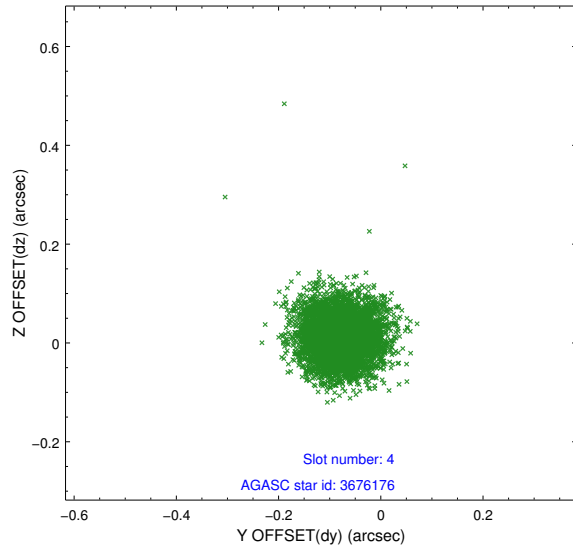
slot	status	id	mag	n_pts	med_dy	med_dz	dr1	dr2	ra	dec	mean_y	mean_z
0	FID	ACIS-S-2	7.09	2584	-0.091	-0.069	0.007	0.011	0.000000	0.000000	-767.59	-1735.62
1	FID	ACIS-S-4	7.19	2584	0.232	0.062	0.005	0.010	0.000000	0.000000	2145.78	172.48
2	FID	ACIS-S-5	7.22	2584	-0.173	0.015	0.006	0.011	0.000000	0.000000	-1819.89	166.67
3	GUIDE	3675168	8.05	5166	0.127	0.189	0.060	0.097	23.758407	0.019370	-809.29	-517.41
4	GUIDE	3676176	8.56	5164	-0.078	0.009	0.061	0.099	23.337019	0.293171	394.84	832.04
5	GUIDE	3677056	8.92	5160	-0.009	-0.194	0.073	0.117	23.390940	0.462877	969.77	547.74
6	GUIDE	614072760	9.16	5162	0.075	-0.011	0.092	0.147	23.565131	-0.164913	-1359.09	271.12
7	GUIDE	3671568	9.75	5159	-0.113	0.009	0.119	0.193	23.029271	0.623395	1737.63	1747.43

2.4 Star Slots

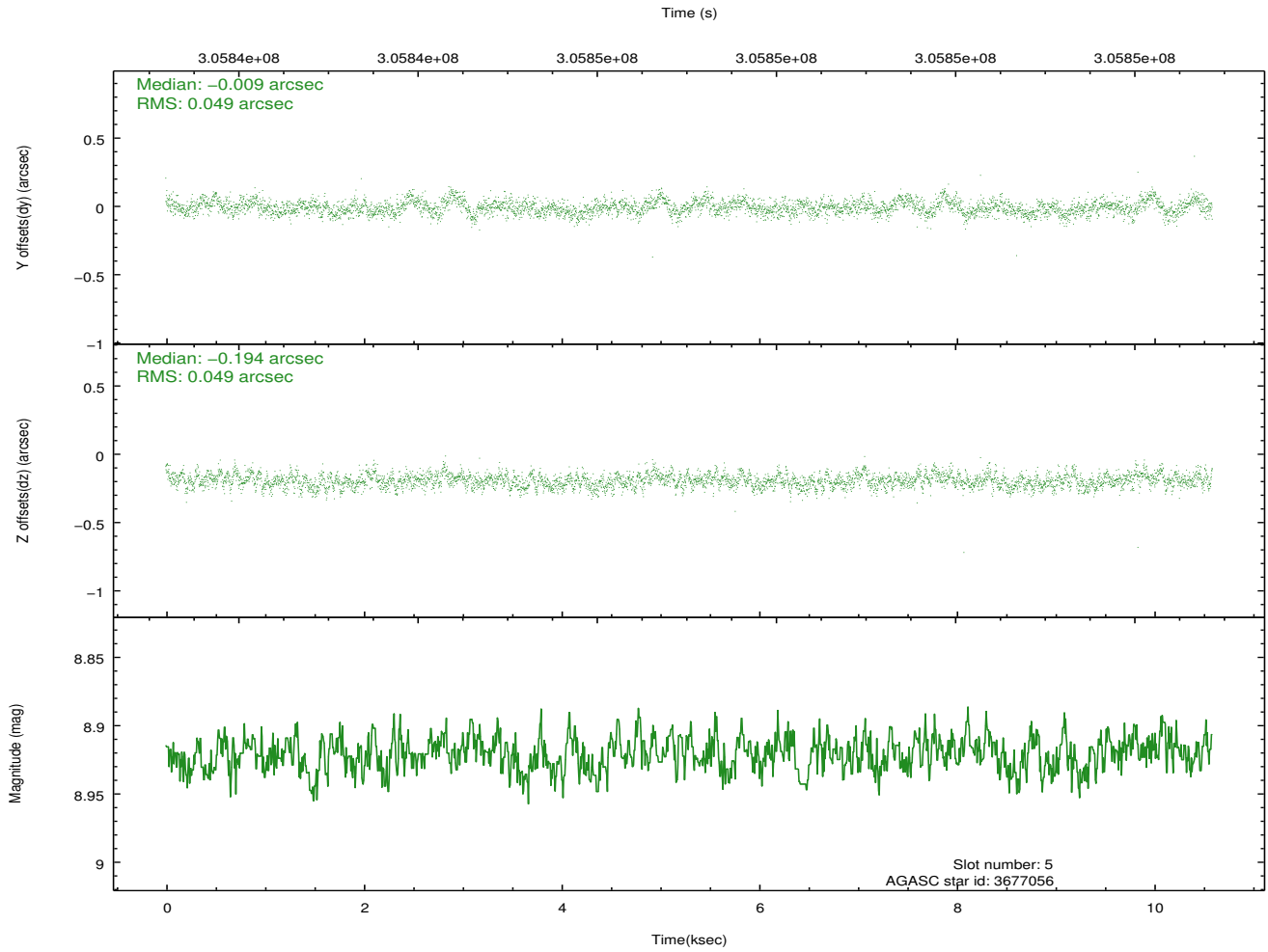
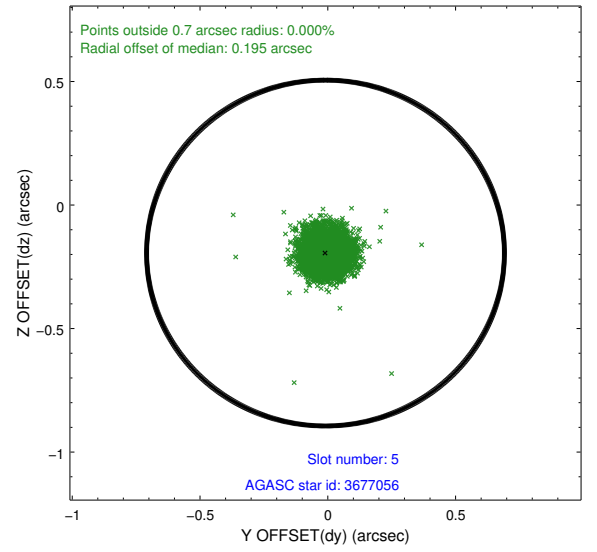
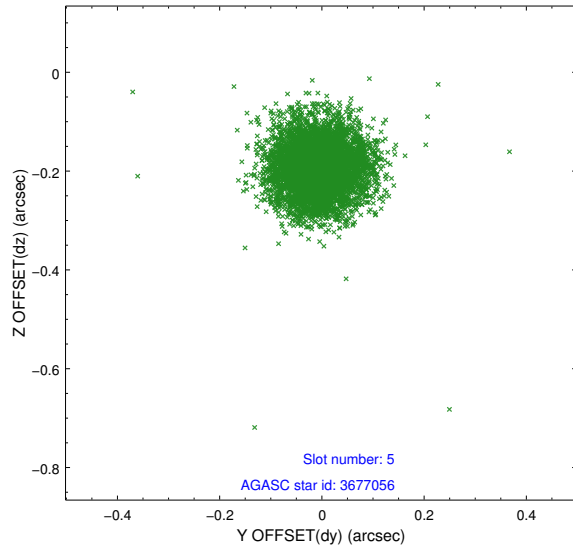
2.4.1 Slot 3



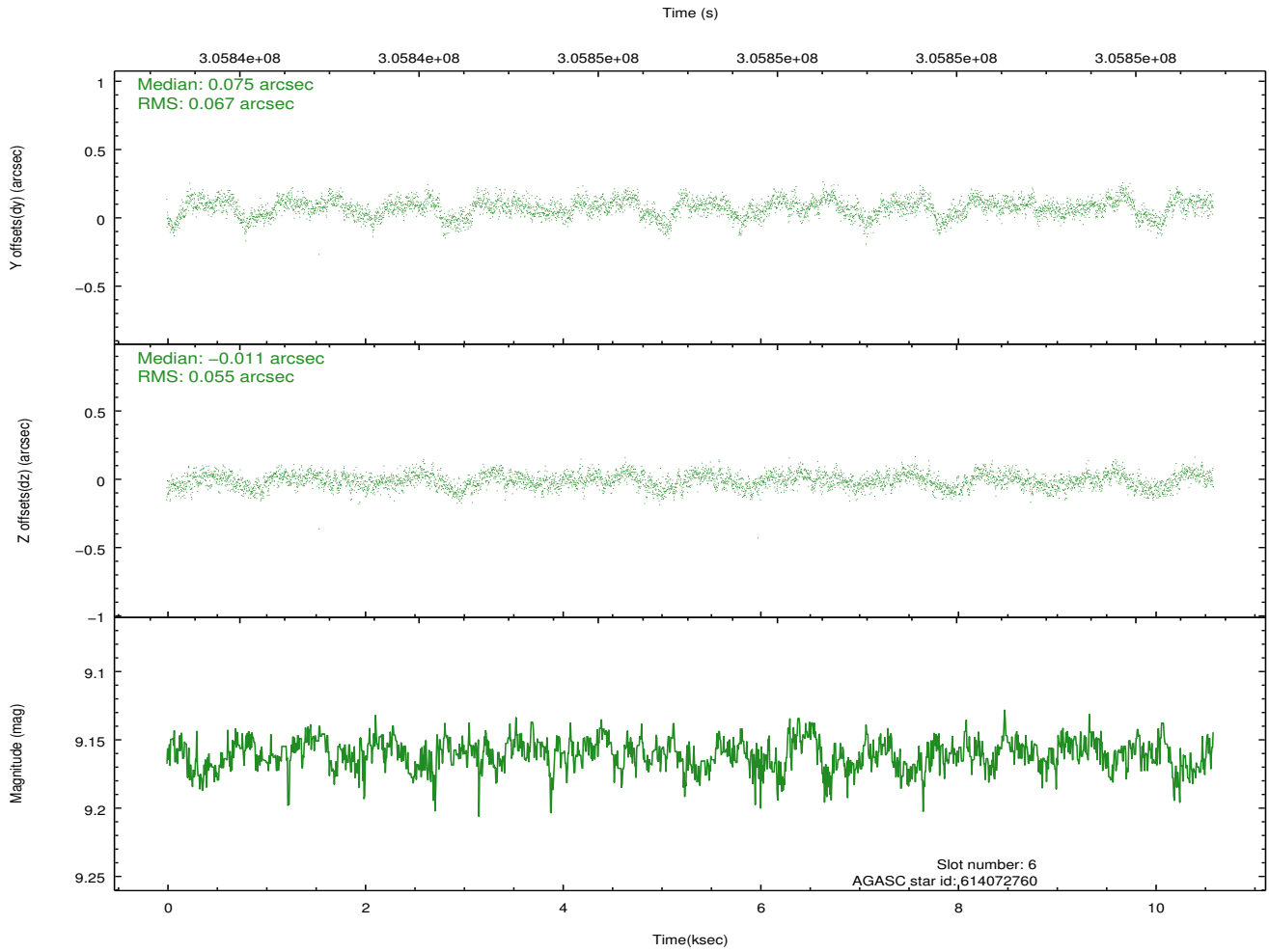
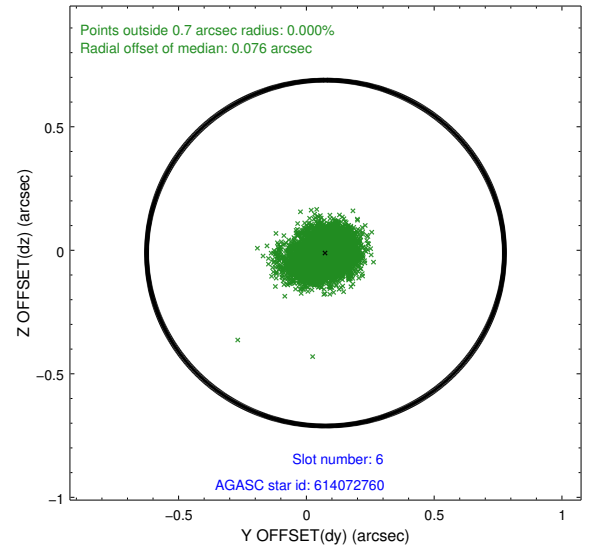
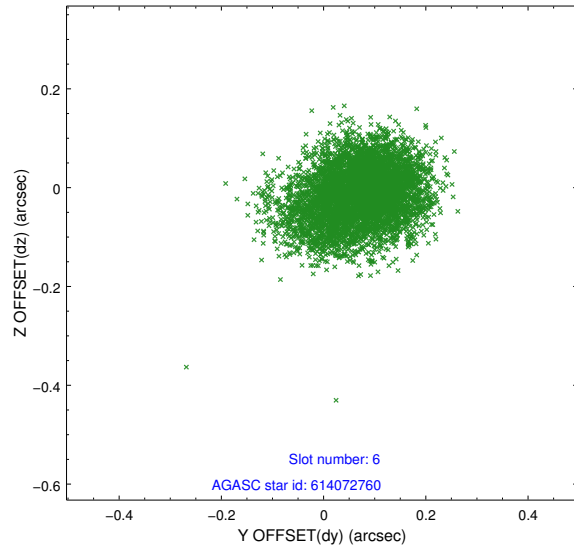
2.4.2 Slot 4



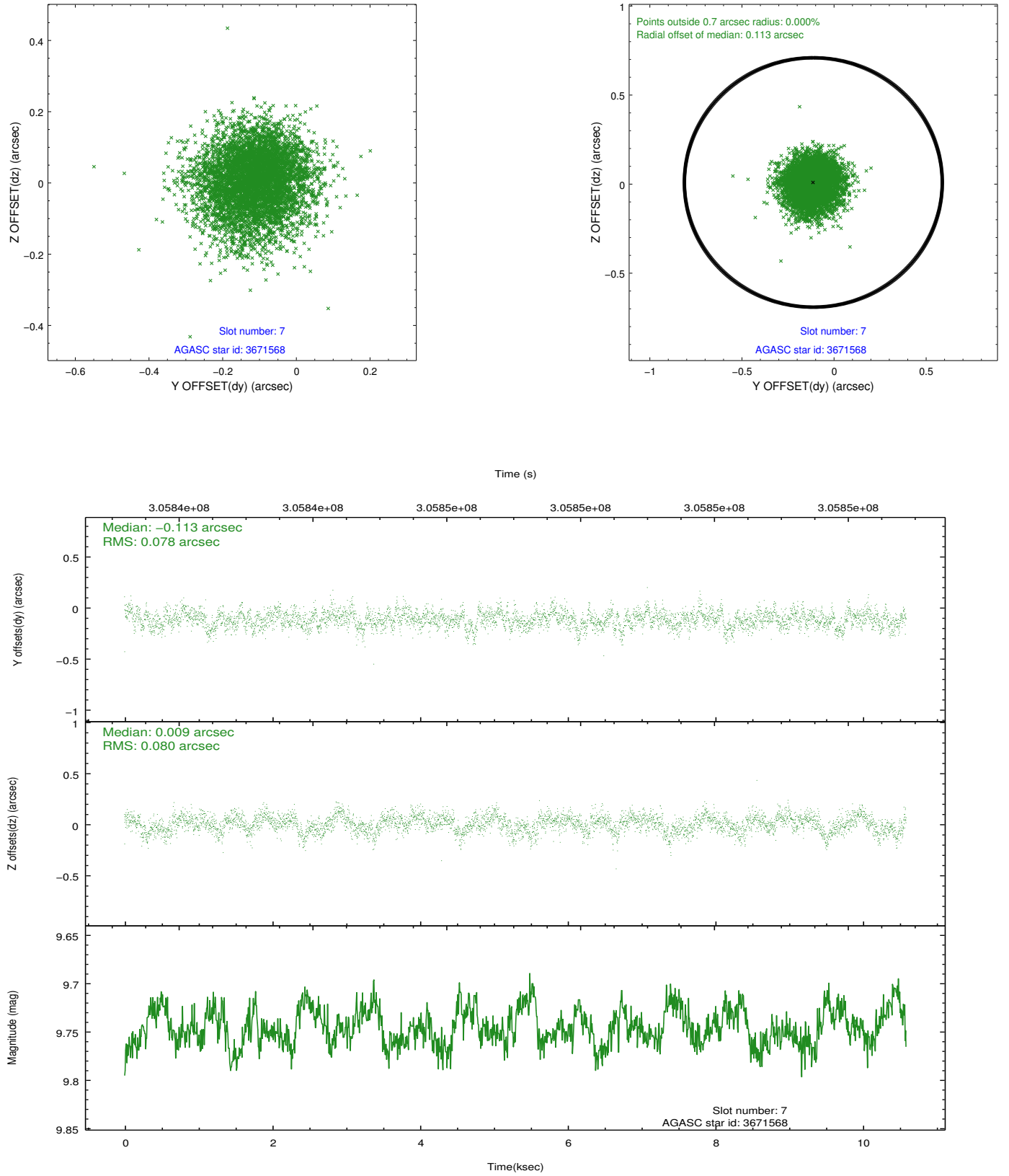
2.4.3 Slot 5



2.4.4 Slot 6

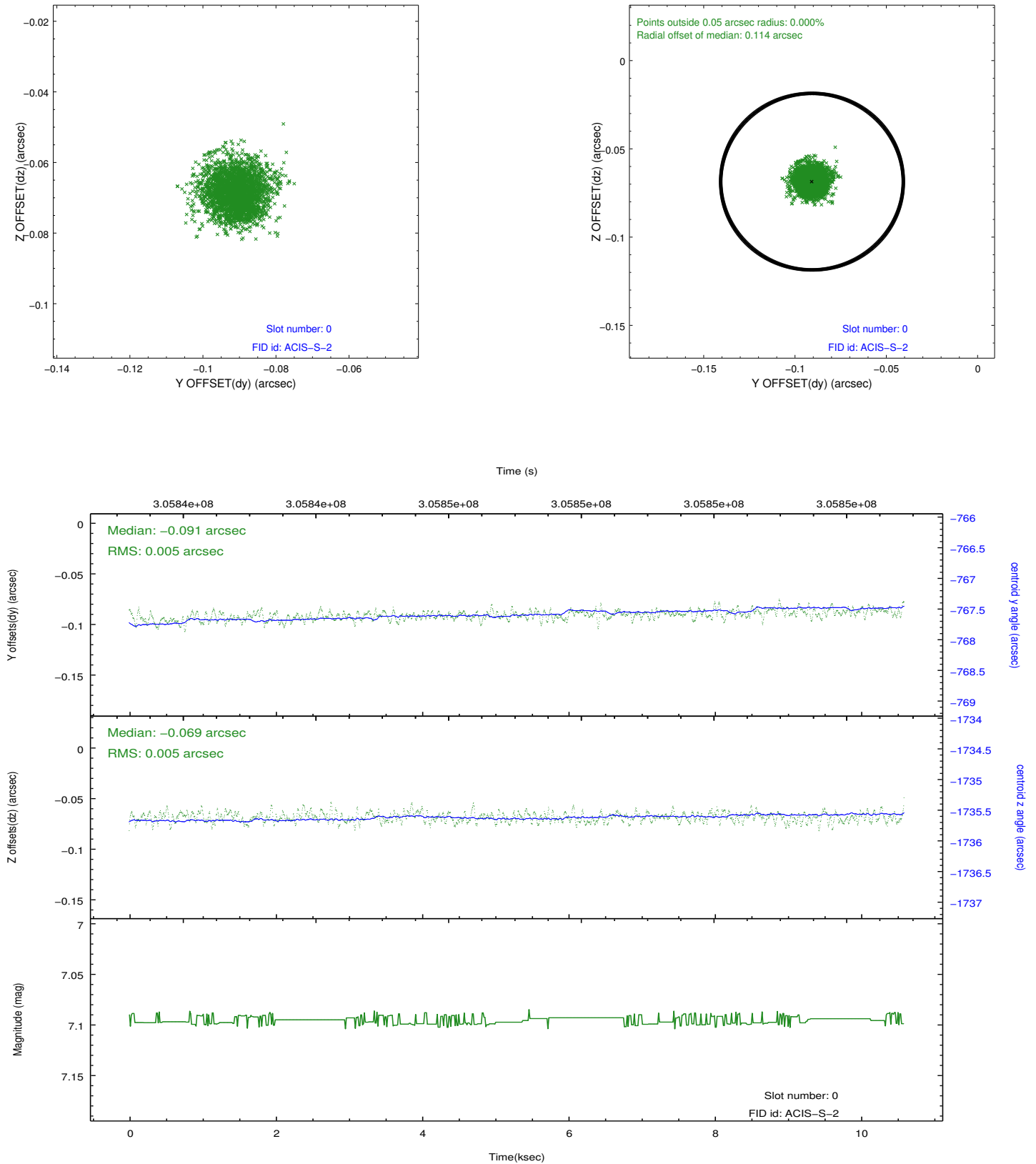


2.4.5 Slot 7

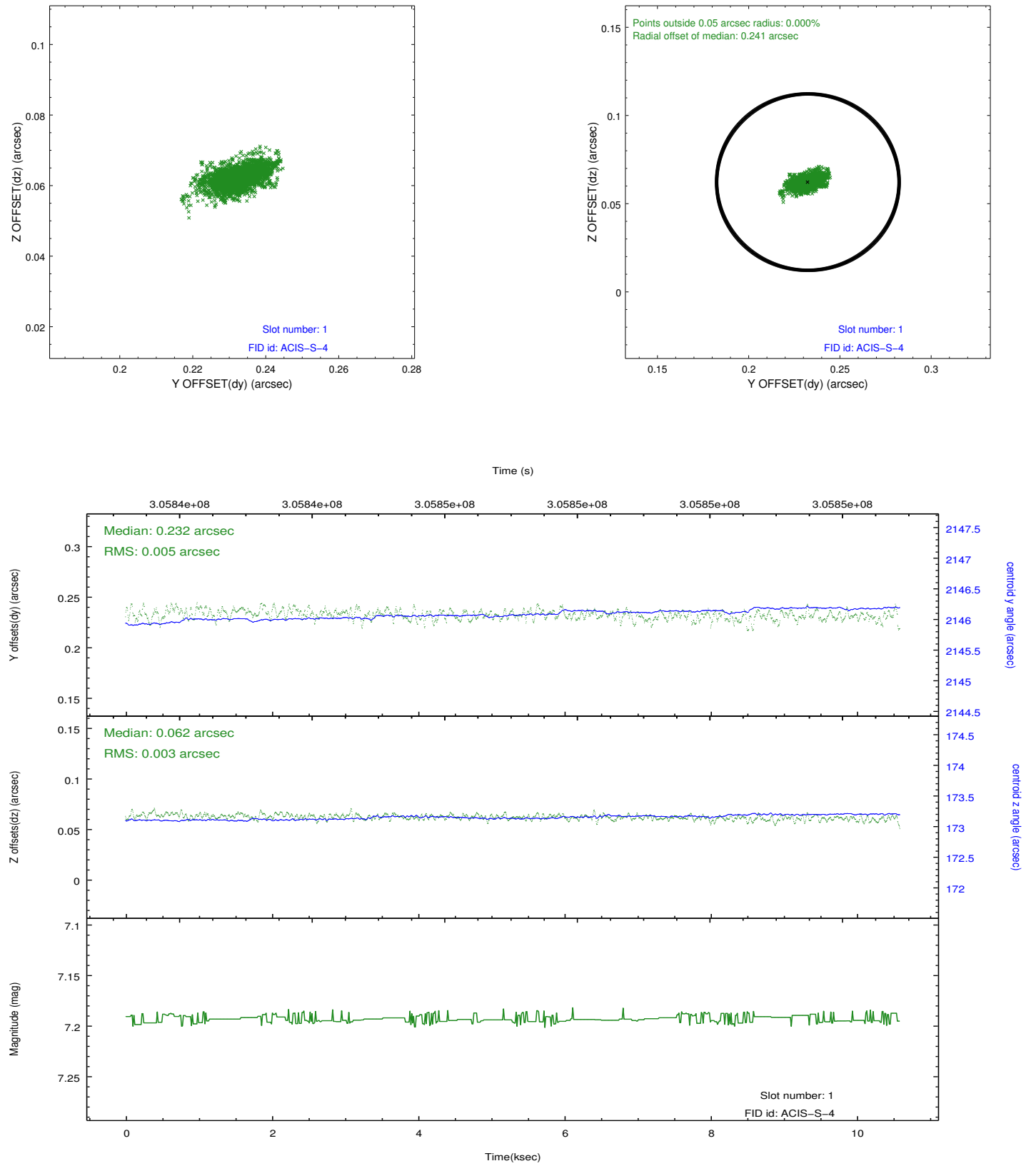


2.5 FID Slots

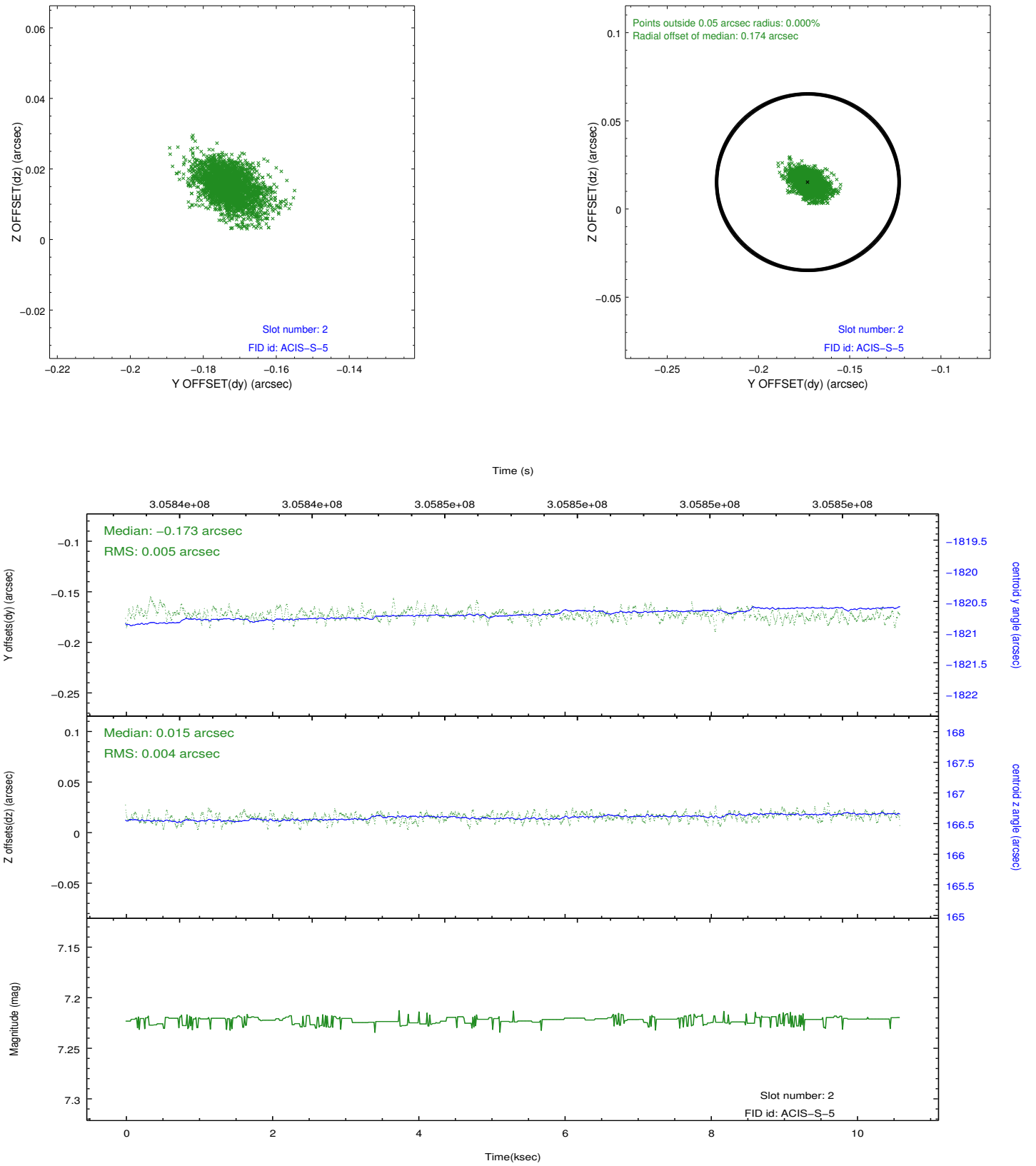
2.5.1 Slot 0



2.5.2 Slot 1



2.5.3 Slot 2



A Summary

A.1 Status

V&V Scientist	Jen Lauer
V&V Date (YYYY-MM-DD)	2012.05.03
V&V Edition	1
V&V Disposition and Status	OK
V&V Charge Time	10.0409

A.2 Comments