

V&V Reference Report

L2 ASCDS Version : 8.4.4

Observation 7718 - L2 Version 2
Chandra X-Ray Center

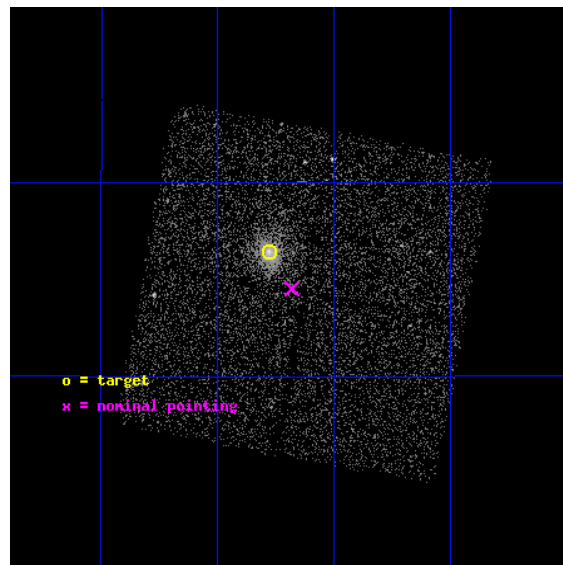
L2 Processing Date : May 1 2012

Contents

1	Front	2
2	OBI	3
2.1	OBI	3
2.1.1	Images	3
2.1.2	Bias	3
2.1.3	Parameters	4
2.1.4	Events	4
2.2	Compared Parameters	5
2.3	Aspect	6
2.4	Star Slots	9
2.4.1	Slot 3	9
2.4.2	Slot 4	10
2.4.3	Slot 5	11
2.4.4	Slot 6	12
2.4.5	Slot 7	13
2.5	FID Slots	14
2.5.1	Slot 0	14
2.5.2	Slot 1	15
2.5.3	Slot 2	16
A	Summary	17
A.1	Status	17
A.2	Comments	17

1 Front

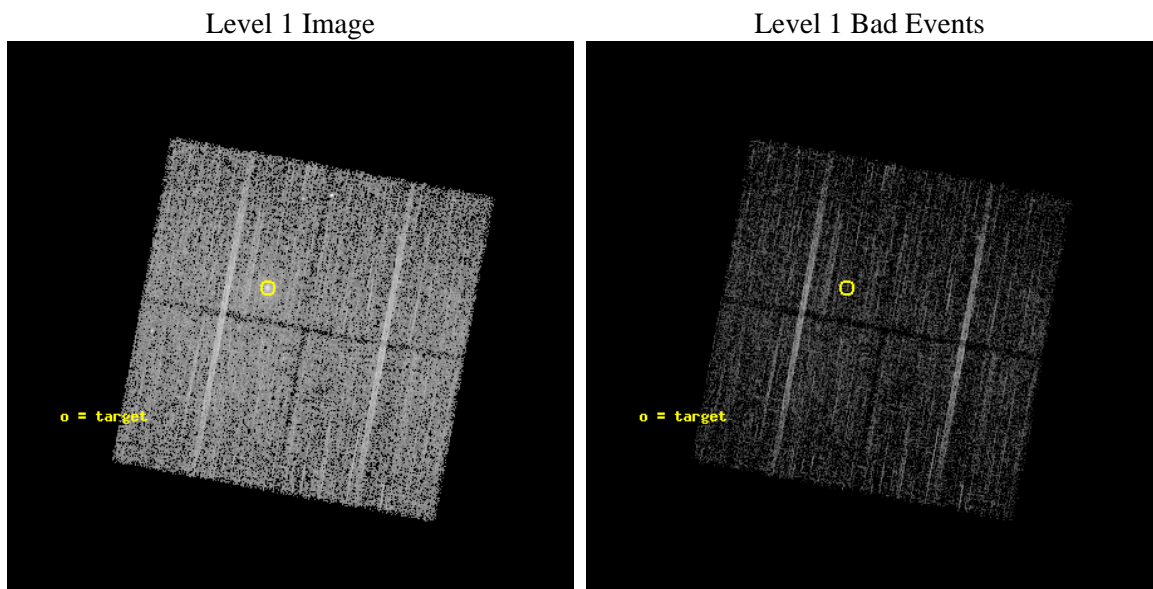
seq_num	701386	Sequence number
obs_id	7718	Observation id
title	Snapshot Survey for X-ray Outbursts in Rich Clusters of Galaxies	P
observer	Professor Gordon Garmire	Principal investigator
object	MACS1720.3+3536	Source name
dtcycle	0	
cycle	P	events from which exps? Prim/Second/Both
ra_targ	260.069583	Observer's specified target RA [deg]
dec_targ	35.607222	Observer's specified target Dec [deg]
ra_nom	260.0453465522	Nominal RA [deg]
dec_nom	35.575561664326	Nominal Dec [deg]
roll_nom	280.49929659997	Nominal Roll [deg]
revision	2	Processing version of data
ontime	7054.8121228218	Sum of GTIs [s]
livetime	6962.63580876	Livetime [s]
ontime0	7054.6890028119	Sum of GTIs [s]
ontime1	7054.7300428152	Sum of GTIs [s]
ontime2	7054.7710828185	Sum of GTIs [s]
ontime3	7054.8121228218	Sum of GTIs [s]
l2events	15699	Number of level 2 events



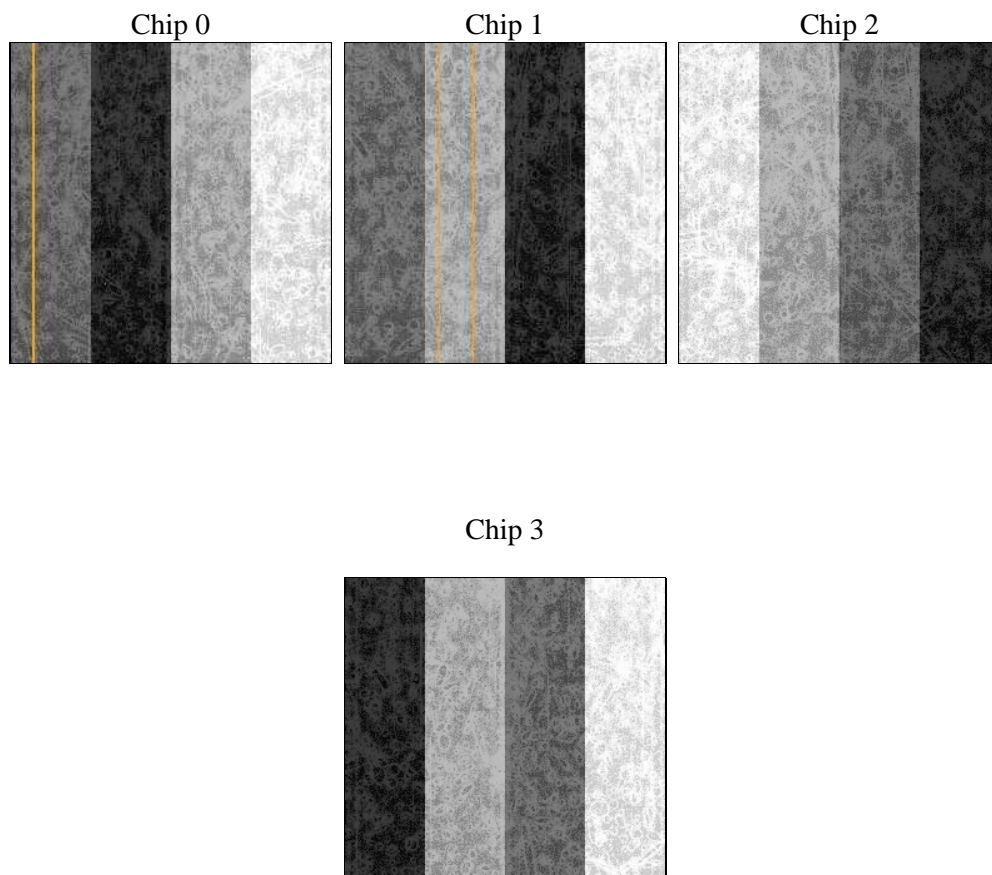
2 OBI

2.1 OBI

2.1.1 Images



2.1.2 Bias



2.1.3 Parameters

obi_num	1	Obi number	sched_exp_time	7000.000000	[s] Scheduled observation exposure time
ascdsver	8.4.4	Processing system revision	ontime	7054.8121228218	Sum of GTIs [s]
caldsver	4.4.9	 	ontime0	7054.6890028119	Sum of GTIs [s]
date	2012-05-01T22:00:20	Date and time of file creation	ontime1	7054.7300428152	Sum of GTIs [s]
revision	2	Processing version of data	ontime2	7054.7710828185	Sum of GTIs [s]
			ontime3	7054.8121228218	Sum of GTIs [s]
			l1events	188497	Number of level 1 events

2.1.4 Events

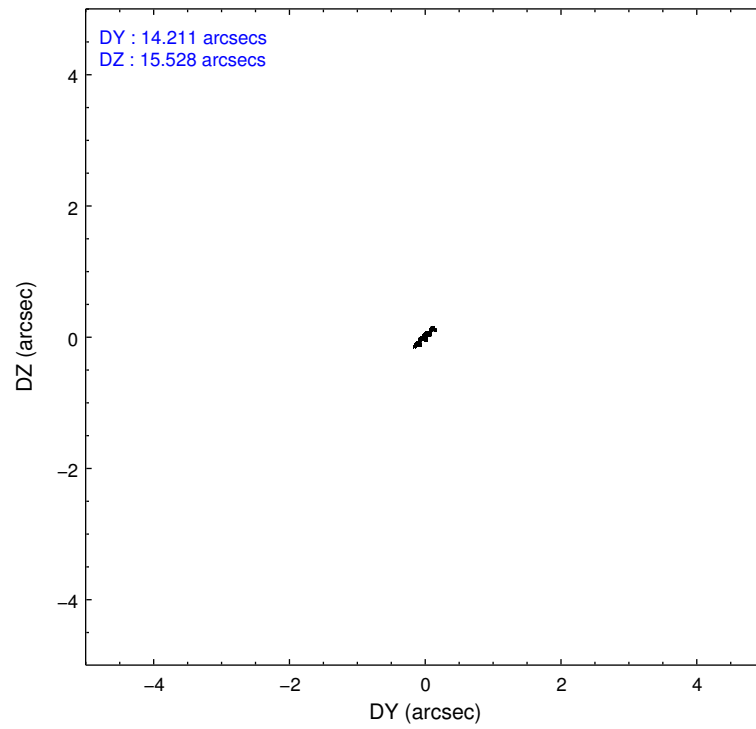
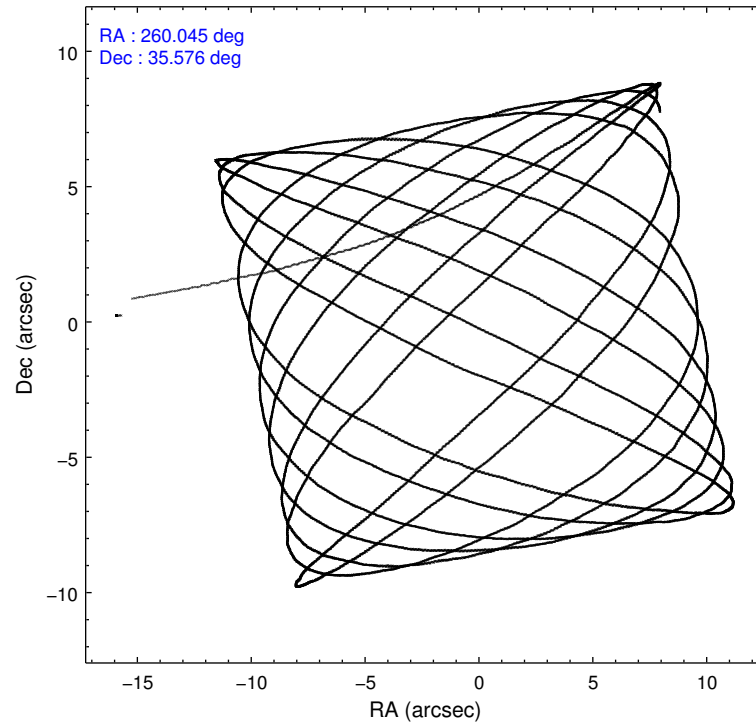
	ccd 0	ccd 1	ccd 2	ccd 3
level 1 events	44450	43396	50232	50419
rejected events	40351	38632	46049	44061
rejected %	90%	89%	91%	87%

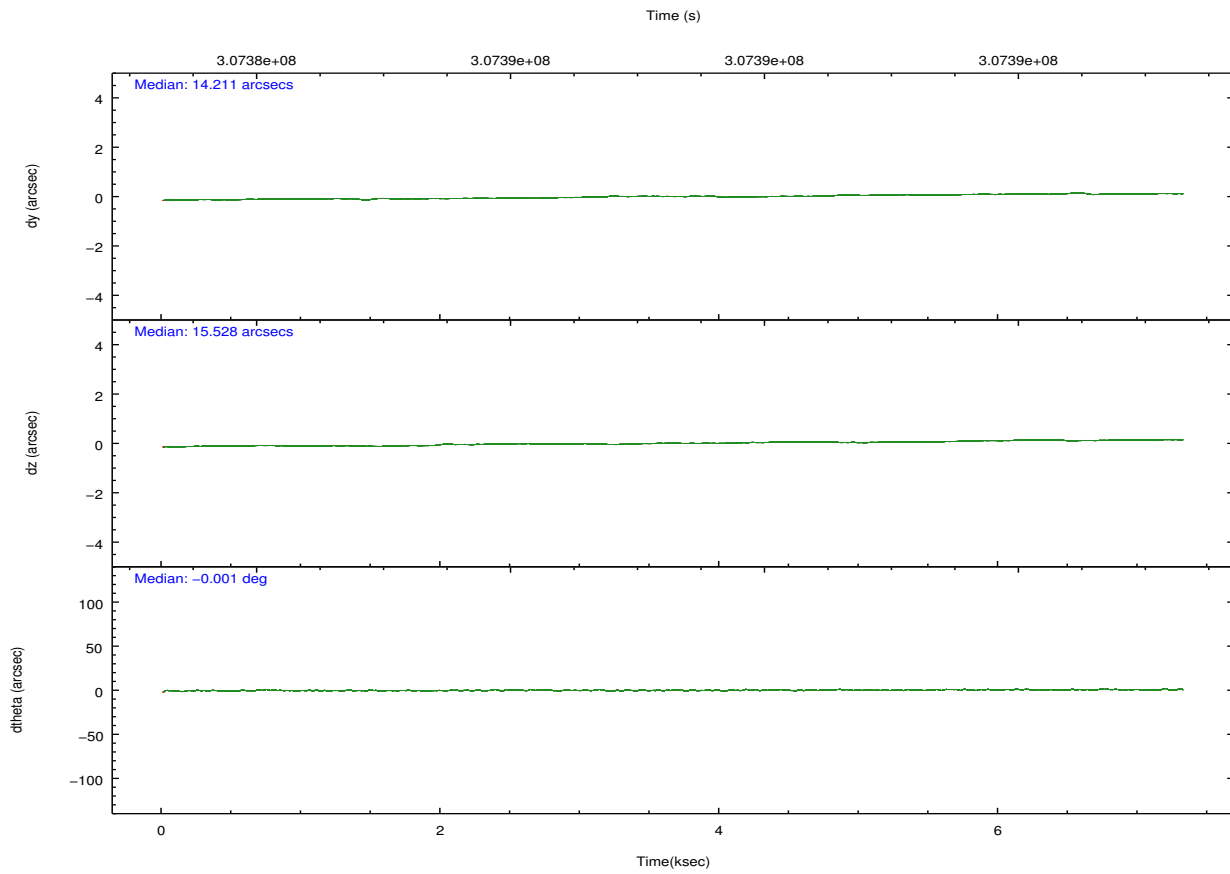
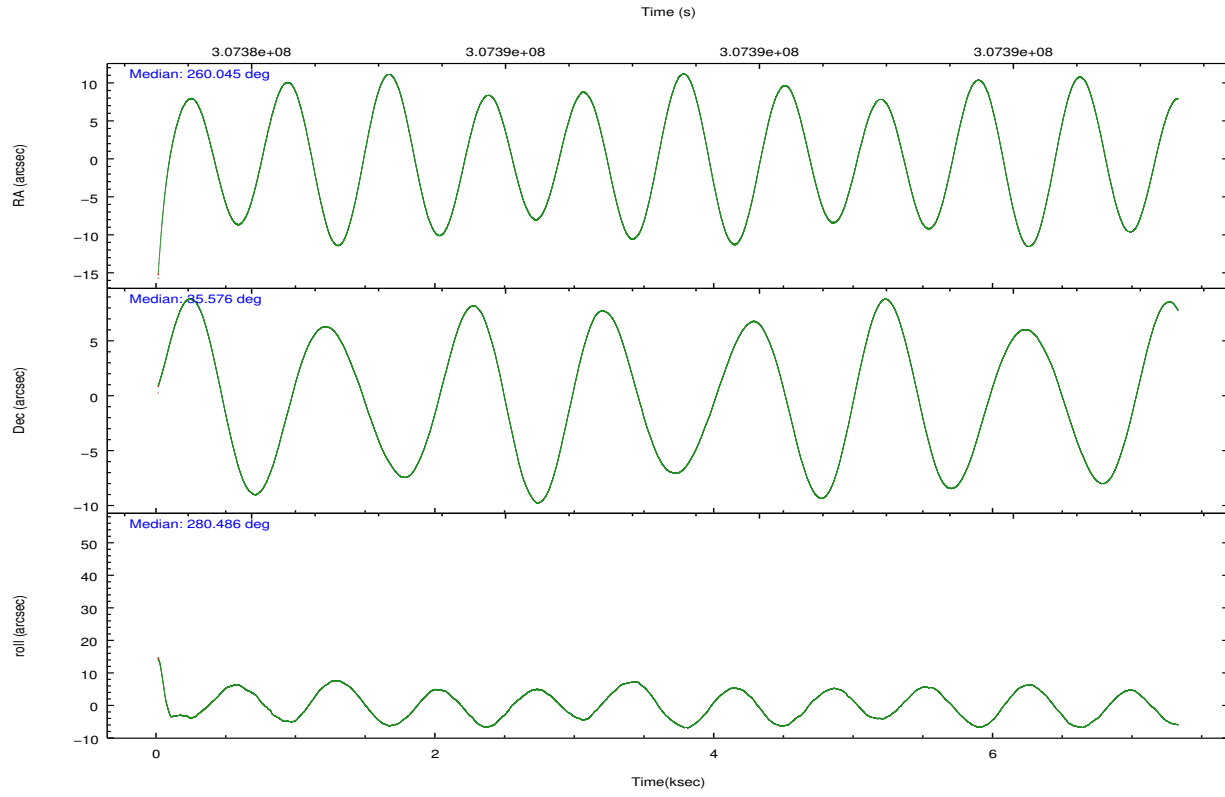
	ccd 0	ccd 1	ccd 2	ccd 3
grade 0 events	1673	2072	1760	3658
	3%	4%	3%	7%
grade 1 events	24	24	20	32
	0%	0%	0%	0%
grade 2 events	990	1003	979	1051
	2%	2%	1%	2%
grade 3 events	440	517	406	496
	0%	1%	0%	0%
grade 4 events	428	486	454	492
	0%	1%	0%	0%
grade 5 events	800	850	714	989
	1%	1%	1%	1%
grade 6 events	570	693	586	668
	1%	1%	1%	1%
grade 7 events	39525	37751	45313	43033
	88%	86%	90%	85%

2.2 Compared Parameters

Parameter	Planned	Actual	Parameter	Planned	Actual
Instrument	ACIS	ACIS	Obspar format version number	7	7
Detector	ACIS-0123	ACIS-0123	Obspar file type	PREDICTED	ACTUAL
Grating	NONE	NONE	Obspar update status	NONE	UPDATED
Data mode	VFAINT	VFAINT	Number of optional ACIS chips dropped	0	0
Observation mode	POINTING	POINTING	On-chip summing requested	N	N
[deg] Pointing RA	260.023266	260.0453465521981	Subarray requested	NONE	NONE
[deg] Pointing Dec	35.596318	35.57556166432646	Alternating exposures requested	N	N
[deg] Pointing Roll	280.303444	280.499296599969	[s] Primary exposure time	0.000000	3.1
[mm] SIM focus pos	-0.782348	-0.7809083437167272			
[mm] SIM defocus	0	0.001439871863259334			
[mm] SIM translation stage pos	-233.592463	-233.5874344608287			
[mm] SIM translation stage offset	0	-0.005018542100998502			
[s] Observation start time (MET)	307383946.184000	307383012.93438			
Observation start date	2007-09-28T16:24:41	2007-09-28T16:10:12			
[s] Observation end time (MET)	307390946.184000	307391768.9973			
Observation end date	2007-09-28T18:21:21	2007-09-28T18:36:08			
Read mode	TIMED	TIMED			

2.3 Aspect



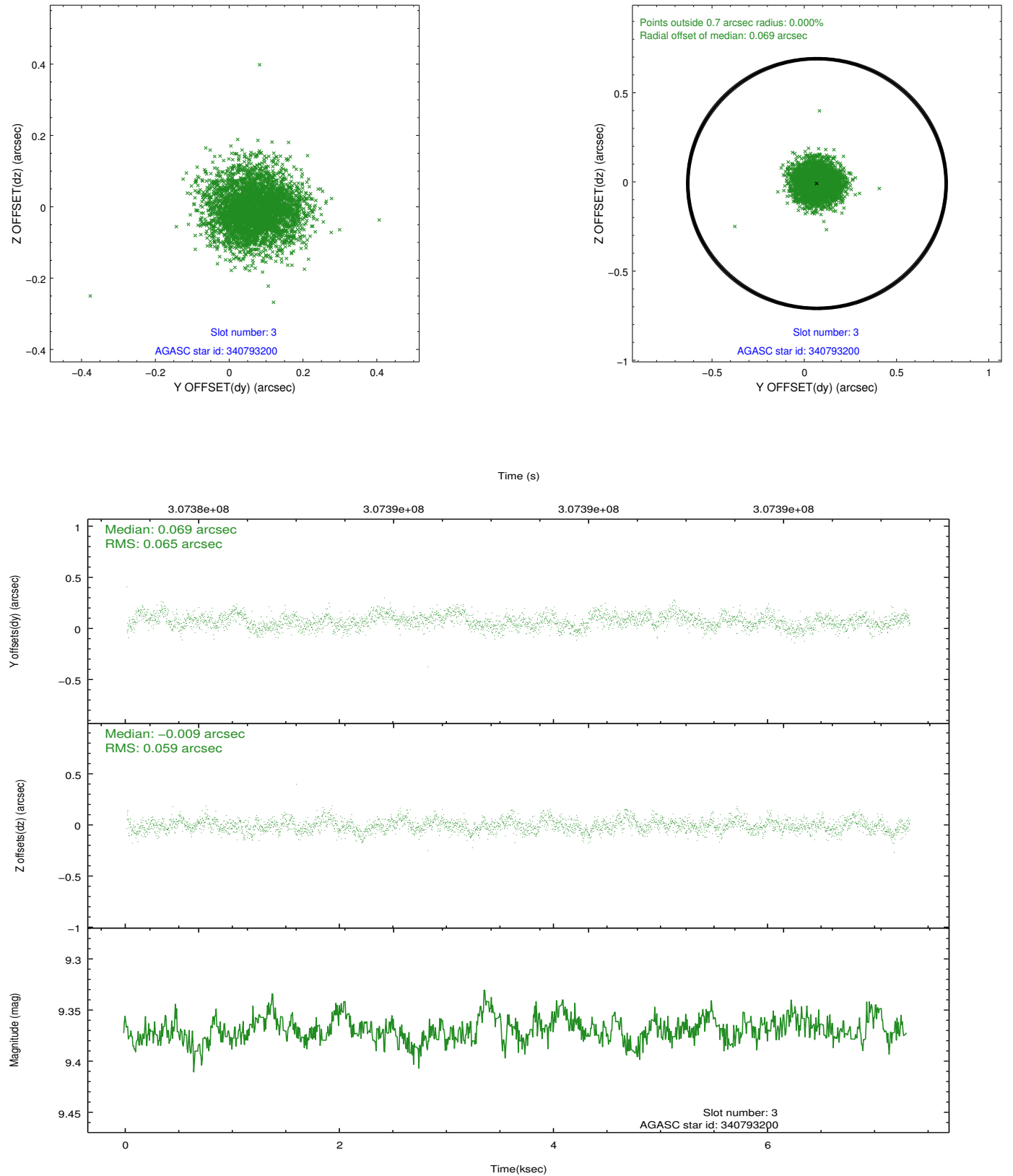


Slot Statistics

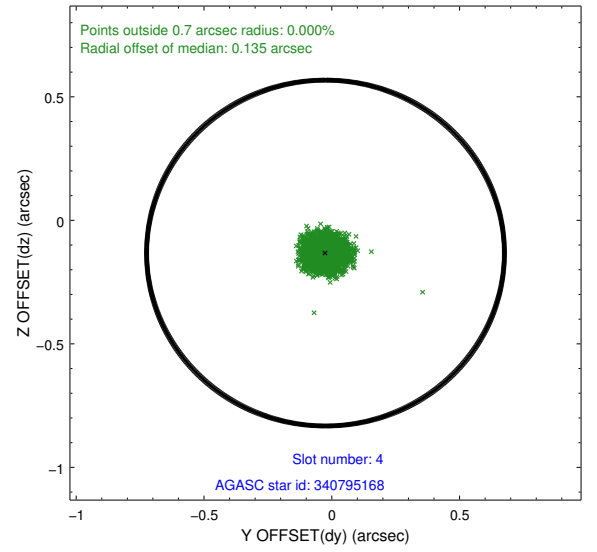
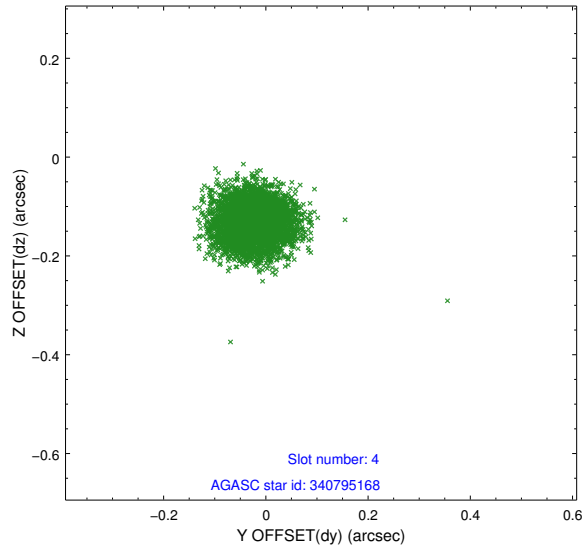
slot	status	id	mag	n_pts	med_dy	med_dz	dr1	dr2	ra	dec	mean_y	mean_z
0	FID	ACIS-I-1	7.22	1785	0.049	-0.038	0.007	0.013	0.000000	0.000000	925.32	-839.19
1	FID	ACIS-I-5	7.22	1785	-0.223	0.045	0.006	0.011	0.000000	0.000000	-1822.61	1058.01
2	FID	ACIS-I-6	7.23	1785	0.083	0.063	0.007	0.012	0.000000	0.000000	390.07	1703.40
3	GUIDE	340793200	9.37	3567	0.069	-0.009	0.094	0.149	260.300981	35.203623	1536.34	551.36
4	GUIDE	340795168	7.91	3566	-0.025	-0.132	0.059	0.091	260.116328	35.370994	847.99	123.88
5	GUIDE	341325128	8.47	3567	-0.134	-0.024	0.082	0.130	260.031346	35.684277	-306.59	79.89
6	GUIDE	341325224	8.86	3567	-0.057	0.249	0.099	0.156	260.448683	35.800602	-503.47	1354.27
7	GUIDE	340791064	9.11	3567	0.149	-0.082	0.084	0.136	259.396108	34.974520	1867.09	-2218.92

2.4 Star Slots

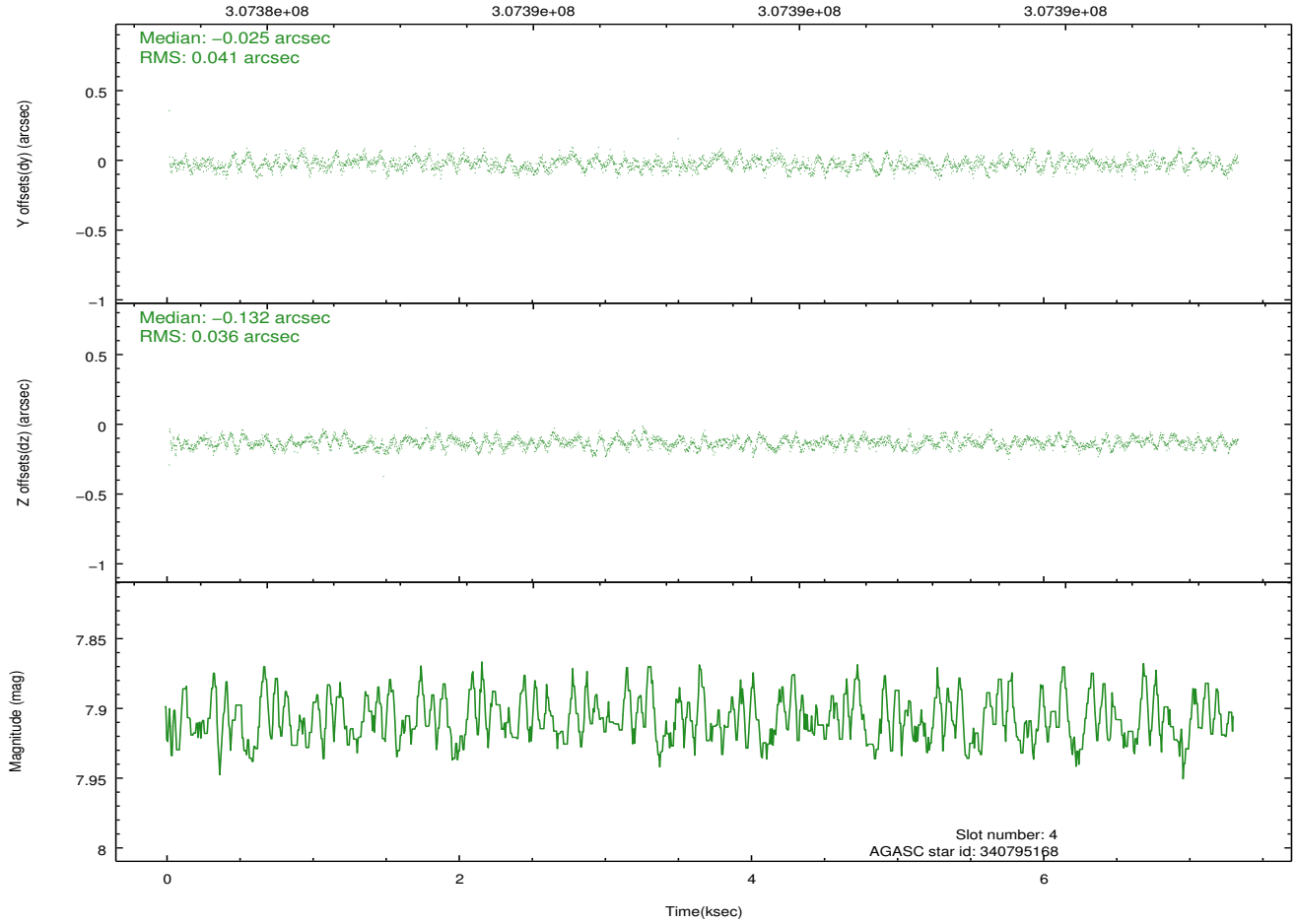
2.4.1 Slot 3



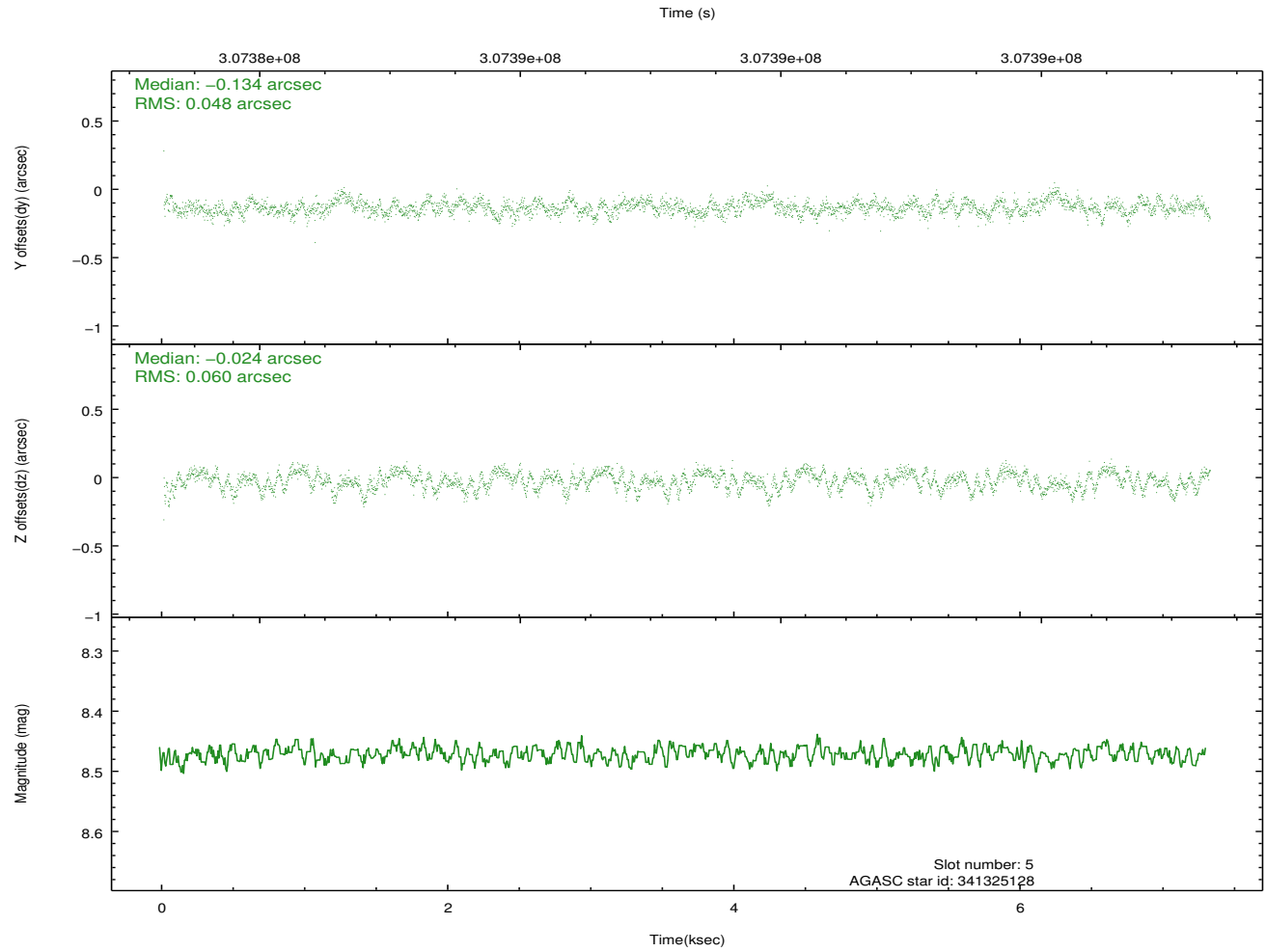
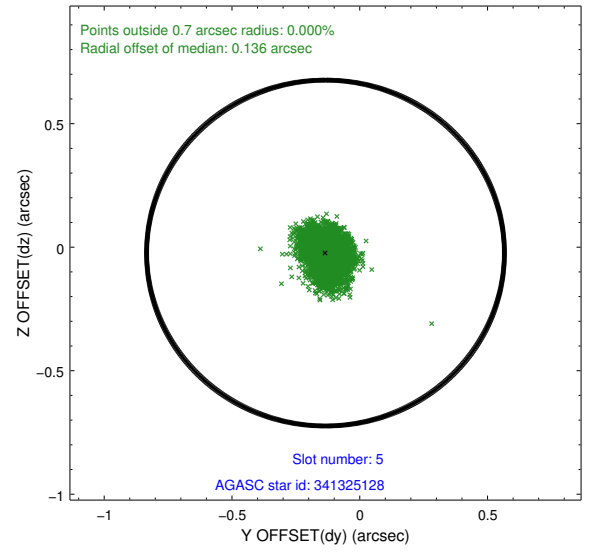
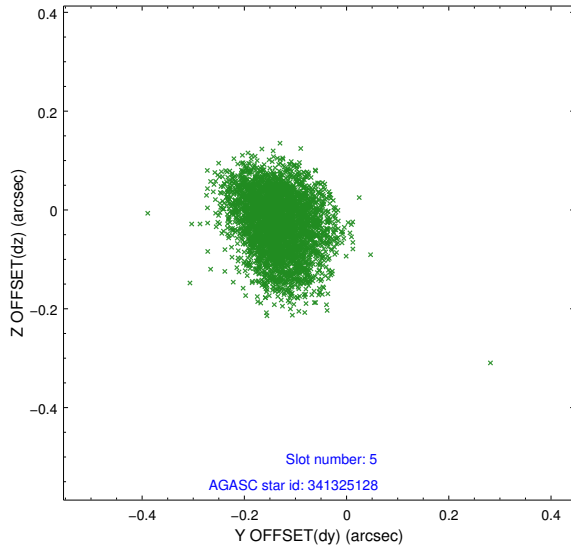
2.4.2 Slot 4



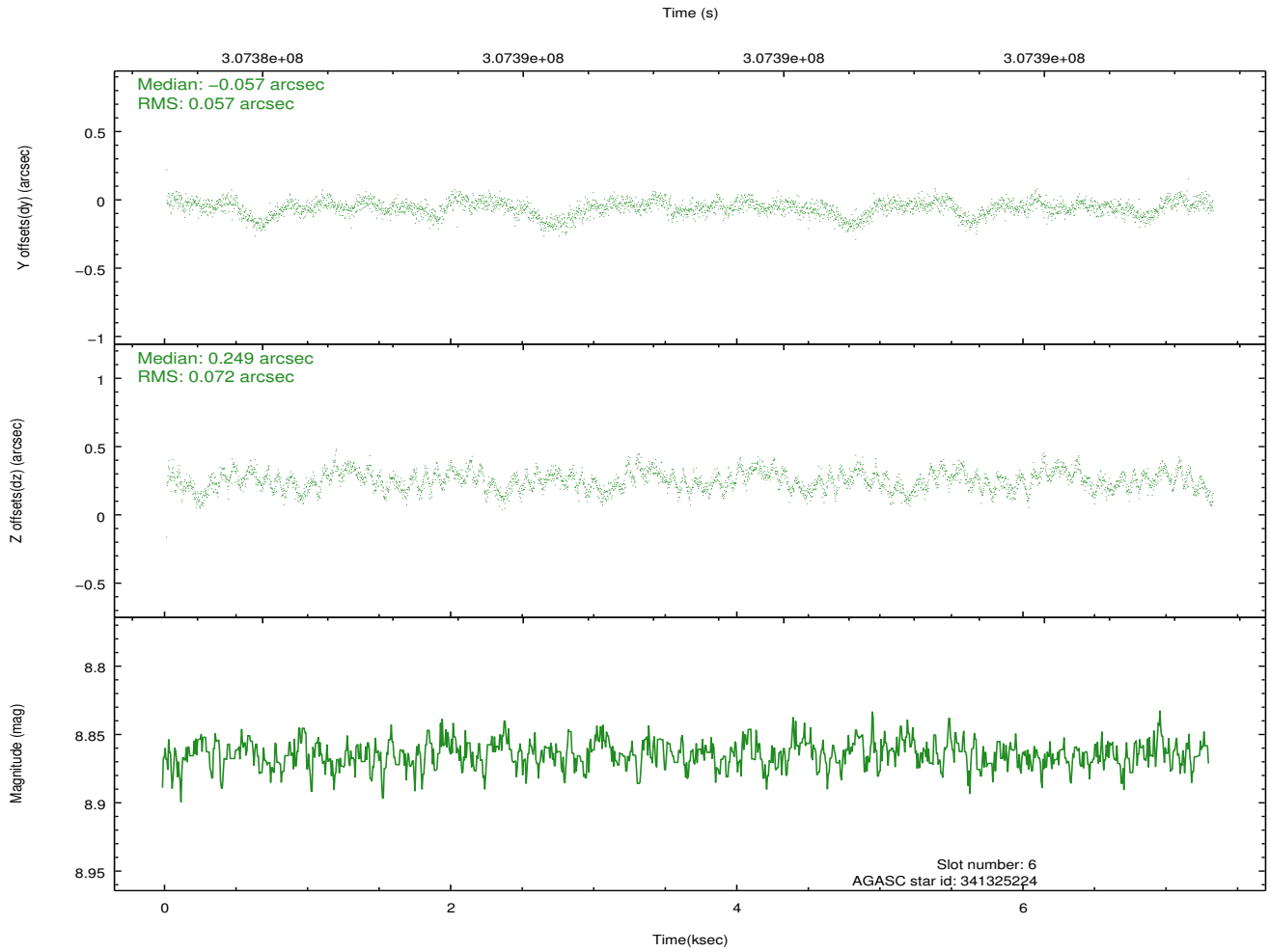
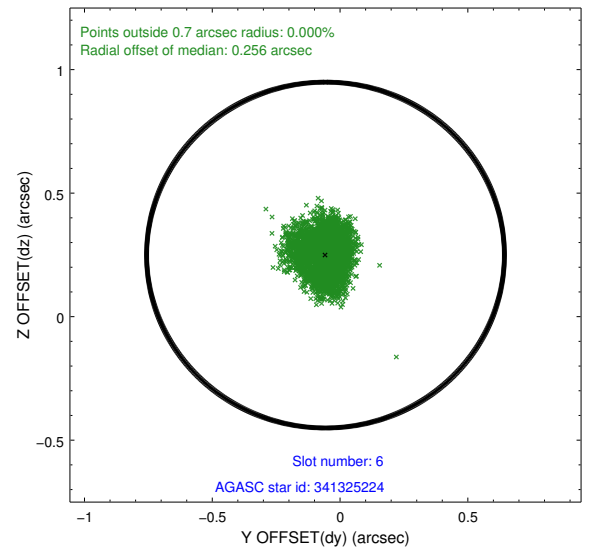
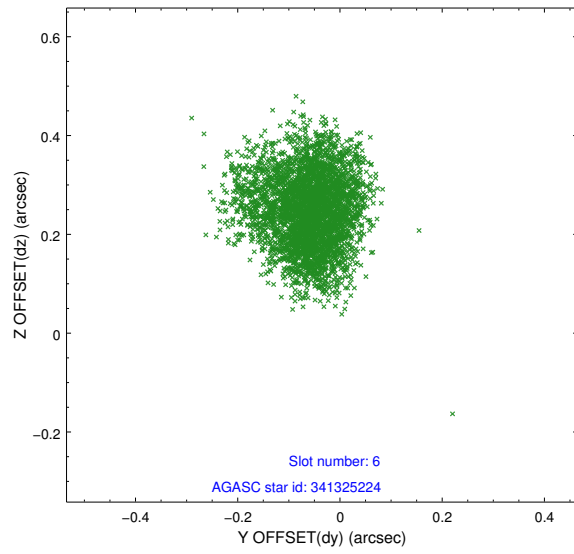
Time (s)



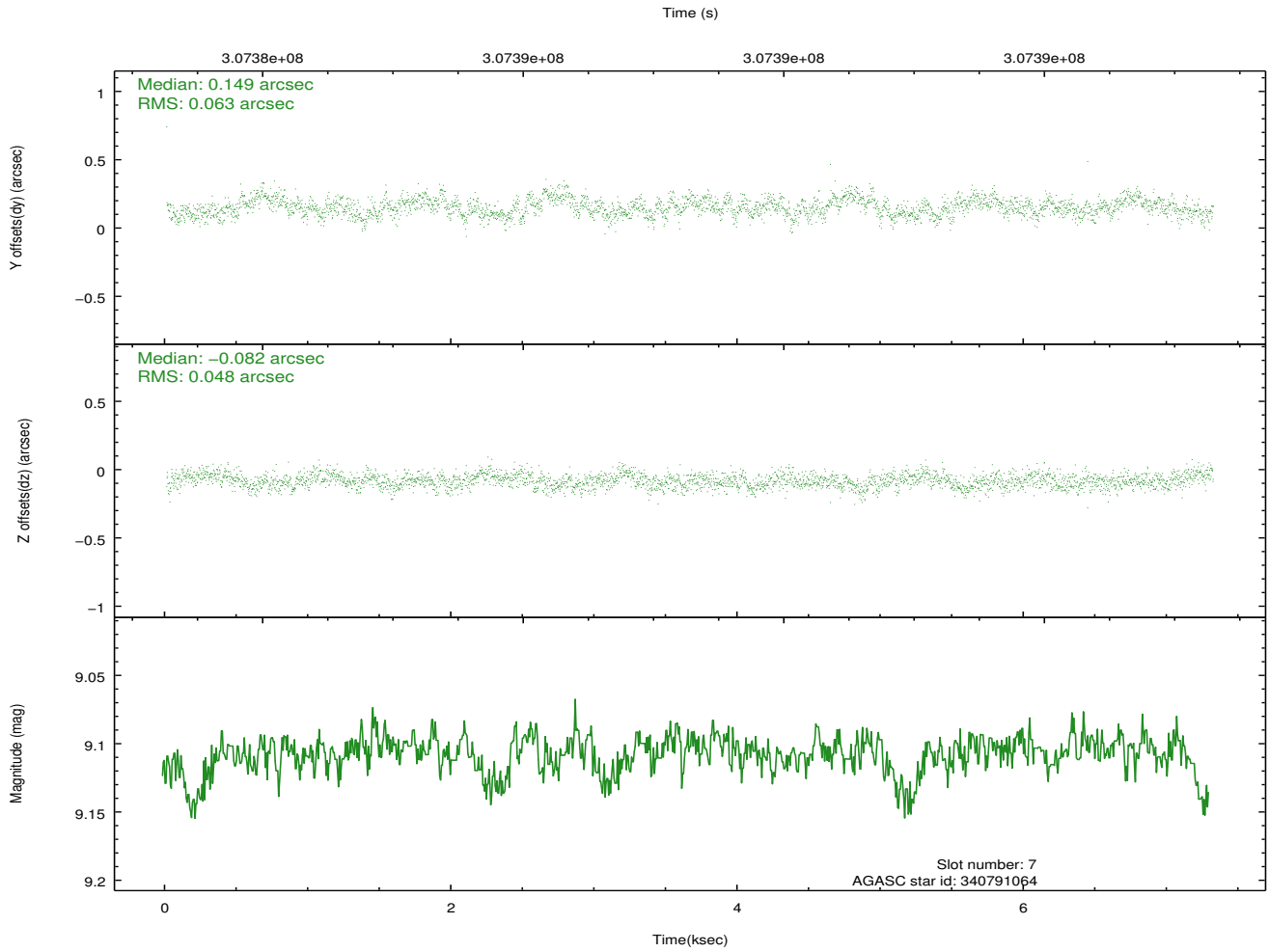
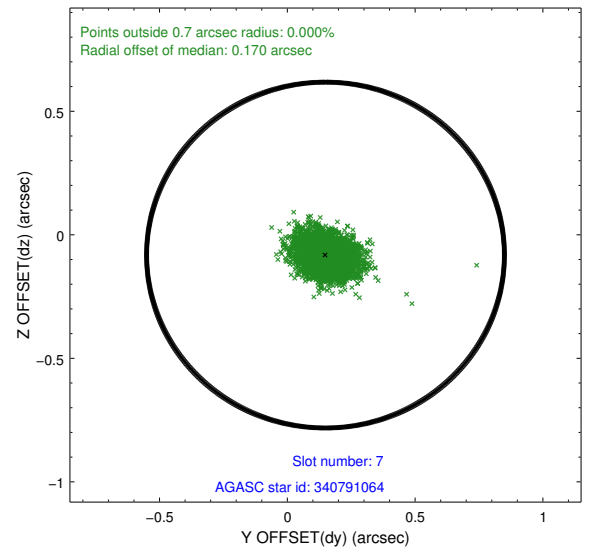
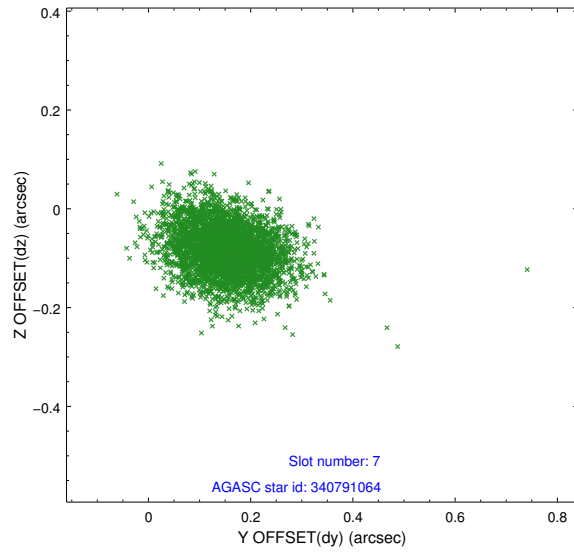
2.4.3 Slot 5



2.4.4 Slot 6

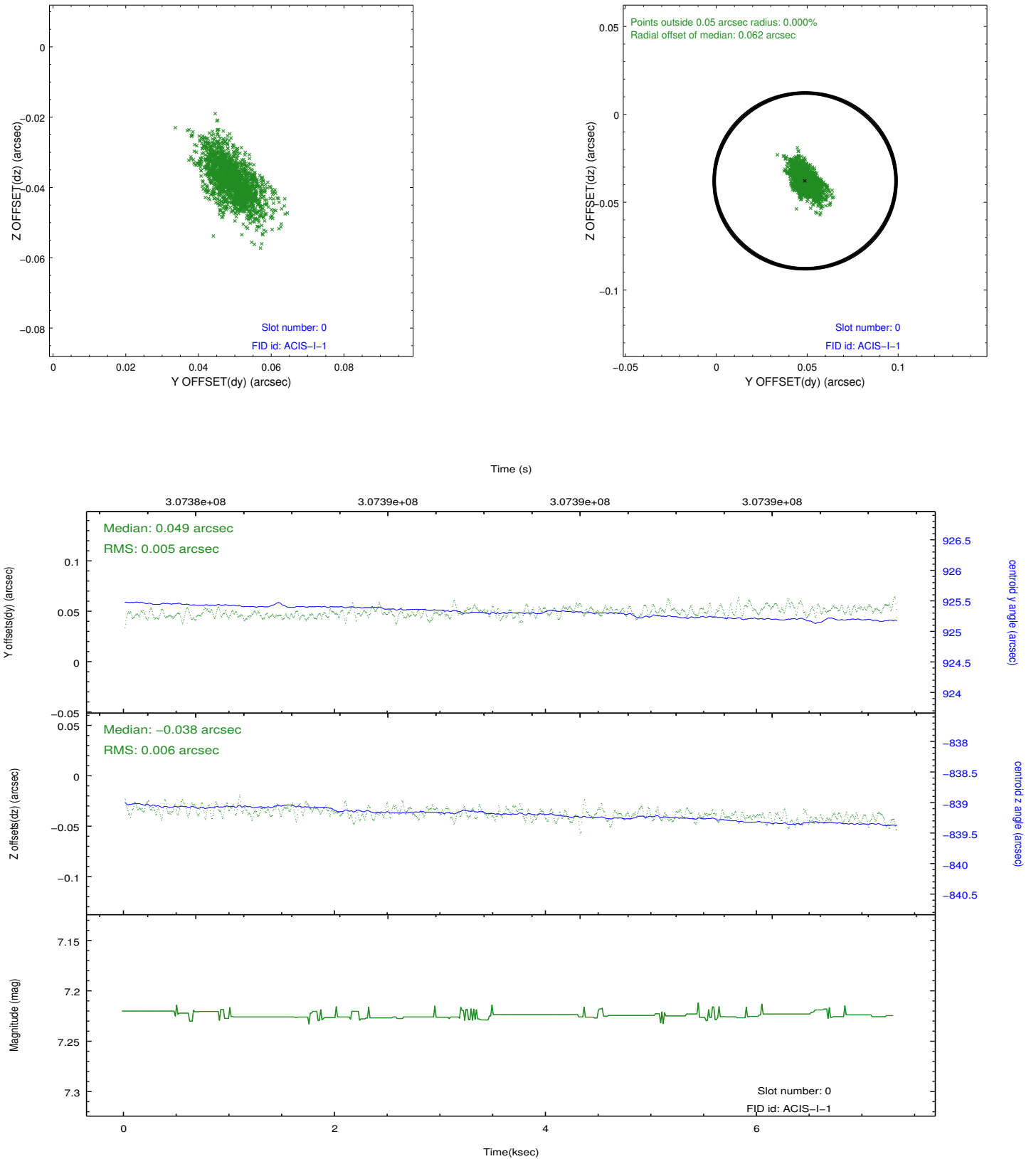


2.4.5 Slot 7

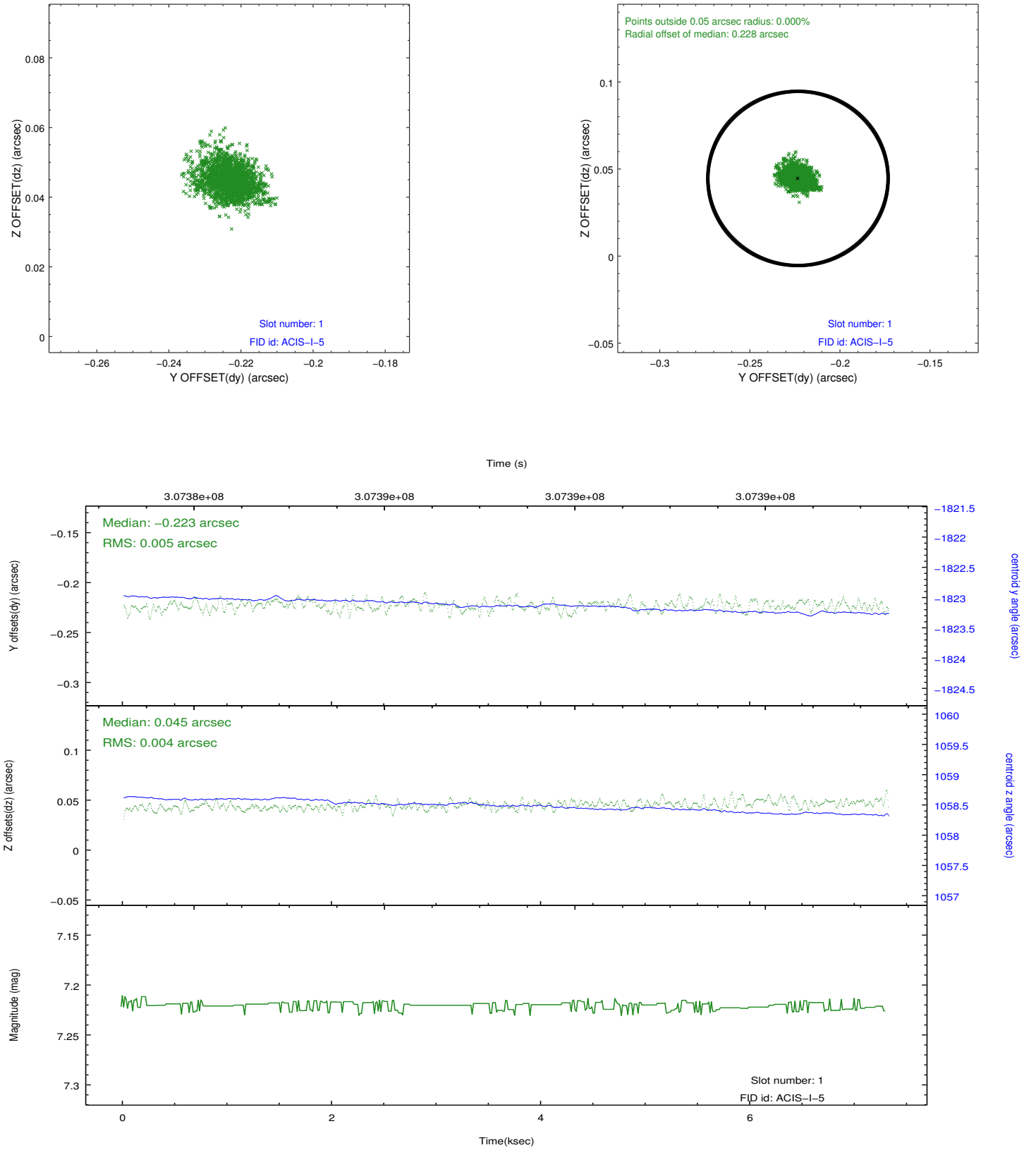


2.5 FID Slots

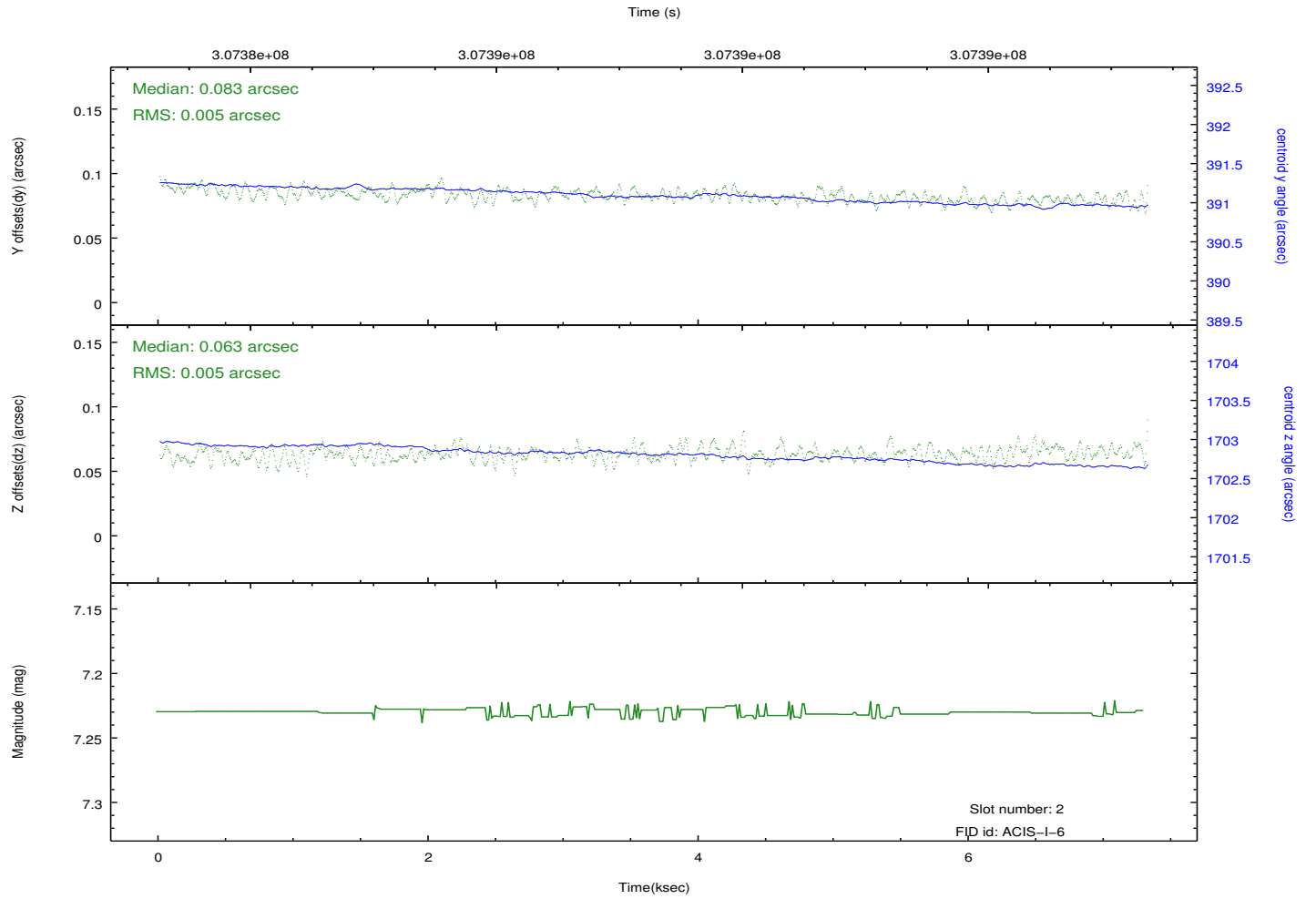
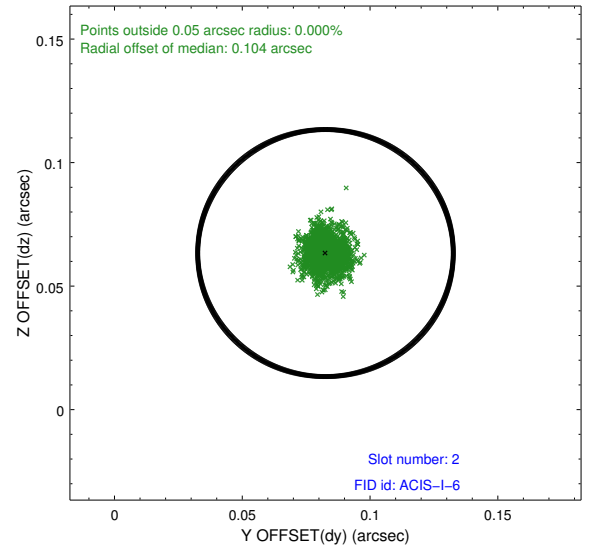
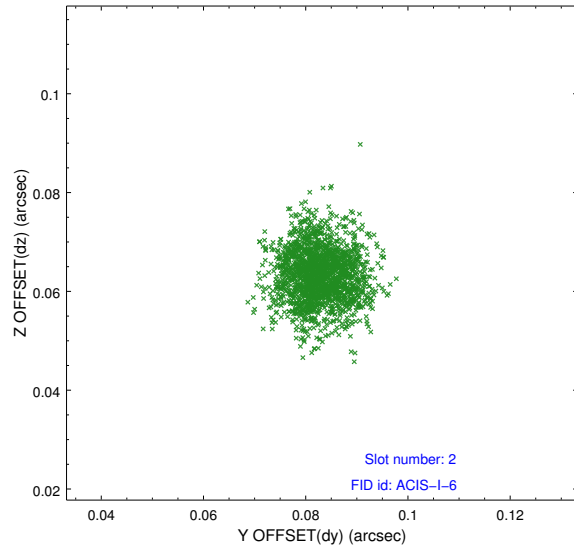
2.5.1 Slot 0



2.5.2 Slot 1



2.5.3 Slot 2



A Summary

A.1 Status

V&V Scientist	Jen Lauer
V&V Date (YYYY-MM-DD)	2012.05.03
V&V Edition	1
V&V Disposition and Status	OK
V&V Charge Time	7.05560005

A.2 Comments