

V&V Reference Report

L2 ASCDS Version : 8.4.4

Observation 7704 - L2 Version 3
Chandra X-Ray Center

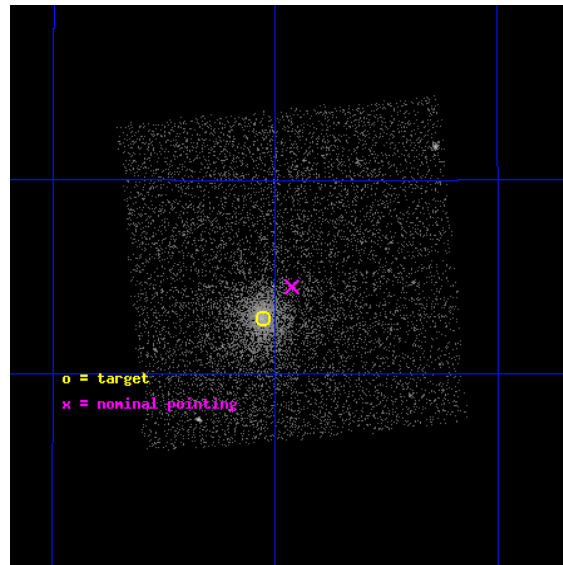
L2 Processing Date : Apr 20 2012

Contents

1	Front	2
2	OBI	3
2.1	OBI	3
2.1.1	Images	3
2.1.2	Bias	3
2.1.3	Parameters	4
2.1.4	Events	4
2.2	Compared Parameters	5
2.3	Aspect	6
2.4	Star Slots	9
2.4.1	Slot 3	9
2.4.2	Slot 4	10
2.4.3	Slot 5	11
2.4.4	Slot 6	12
2.4.5	Slot 7	13
2.5	FID Slots	14
2.5.1	Slot 0	14
2.5.2	Slot 1	15
2.5.3	Slot 2	16
A	Summary	17
A.1	Status	17
A.2	Comments	17

1 Front

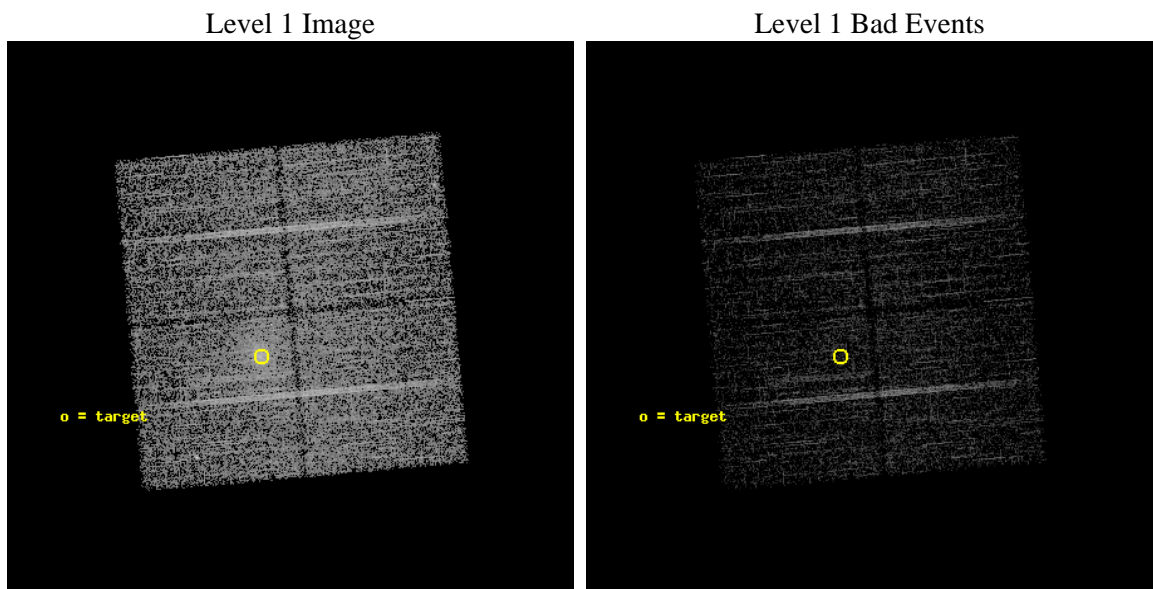
seq_num	701372	Sequence number
obs_id	7704	Observation id
title	Snapshot Survey for X-ray Outbursts in Rich Clusters of Galaxies	P
observer	Professor Gordon Garmire	Principal investigator
object	ABELL963	Source name
dtcycle	0	
cycle	P	events from which exps? Prim/Second/Both
ra_targ	154.264167	Observer's specified target RA [deg]
dec_targ	39.0475	Observer's specified target Dec [deg]
ra_nom	154.23147630394	Nominal RA [deg]
dec_nom	39.074901676085	Nominal Dec [deg]
roll_nom	175.01081310754	Nominal Roll [deg]
revision	3	Processing version of data
ontime	5136.700039506	Sum of GTIs [s]
livetime	5069.5852719063	Livetime [s]
ontime0	5133.5590692163	Sum of GTIs [s]
ontime1	5136.700039506	Sum of GTIs [s]
ontime2	5136.700039506	Sum of GTIs [s]
ontime3	5136.700039506	Sum of GTIs [s]
l2events	13521	Number of level 2 events



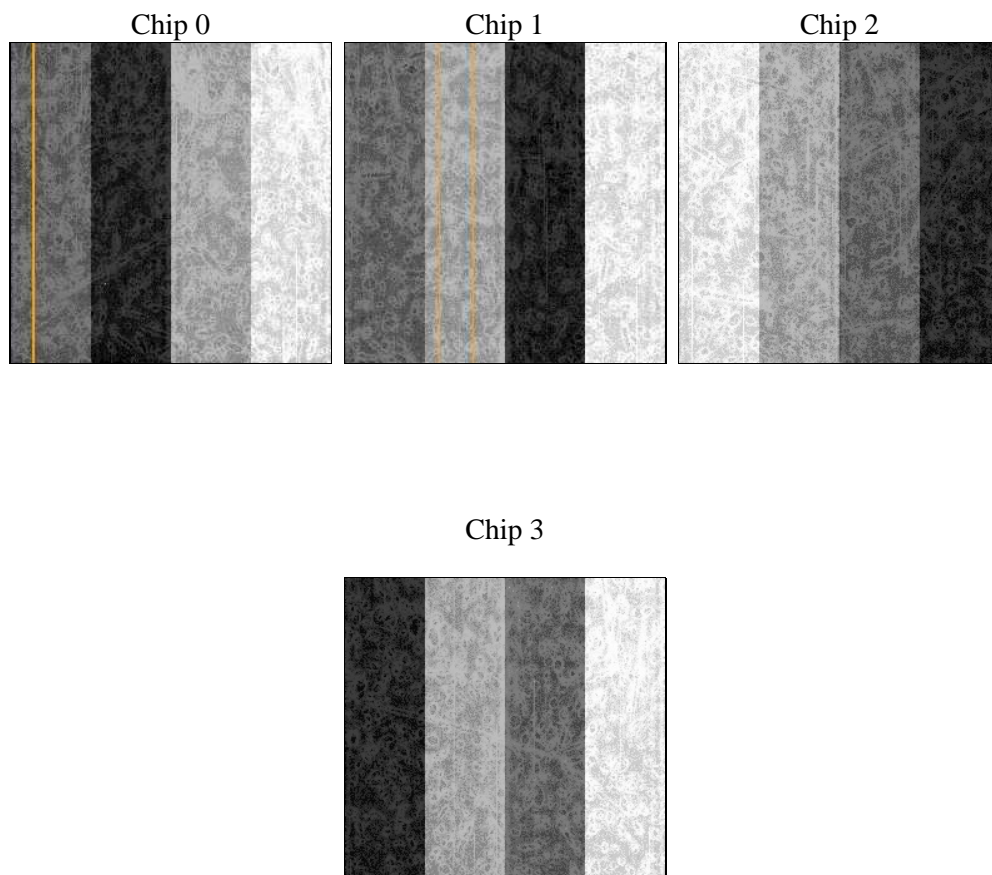
2 OBI

2.1 OBI

2.1.1 Images



2.1.2 Bias



2.1.3 Parameters

obi_num	0	Obi number	sched_exp_time	5000.000000	[s] Scheduled observation exposure time
ascdsver	8.4.4	Processing system revision	ontime	5136.700039506	Sum of GTIs [s]
caldsver	4.4.9	 	ontime0	5133.5590692163	Sum of GTIs [s]
date	2012-04-20T04:26:18	Date and time of file creation	ontime1	5136.700039506	Sum of GTIs [s]
revision	3	Processing version of data	ontime2	5136.700039506	Sum of GTIs [s]
			ontime3	5136.700039506	Sum of GTIs [s]
			l1events	149974	Number of level 1 events

2.1.4 Events

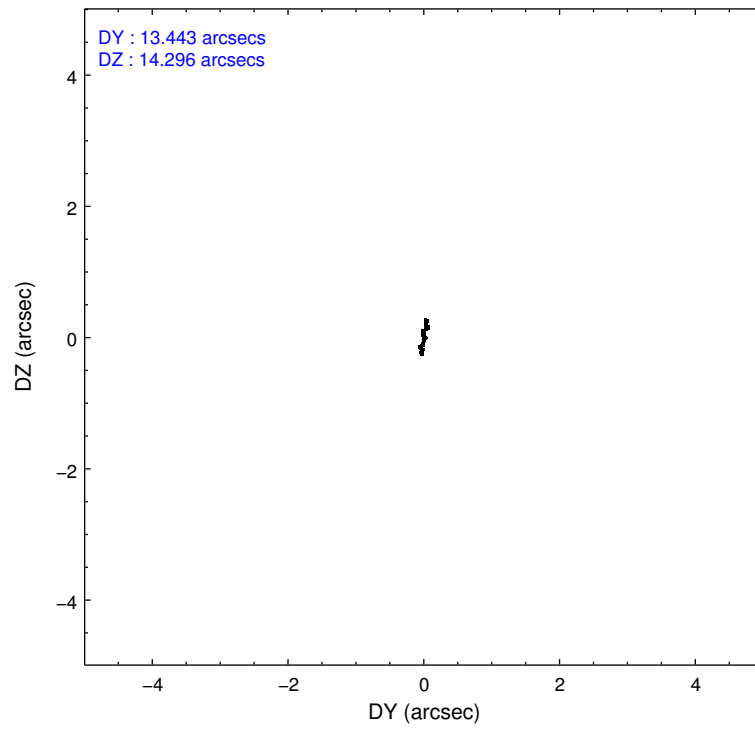
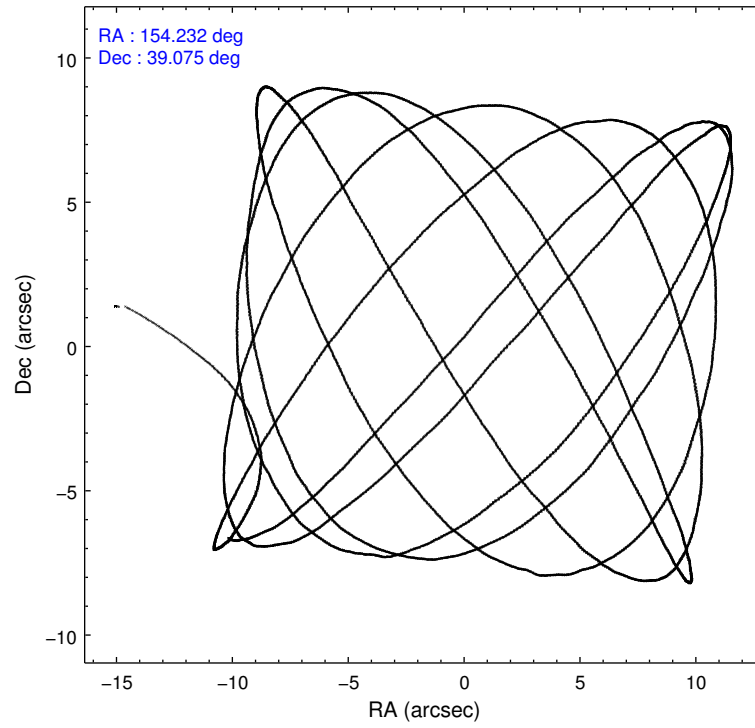
	ccd 0	ccd 1	ccd 2	ccd 3
level 1 events	36187	33794	39525	40468
rejected events	33199	30673	36580	33381
rejected %	91%	90%	92%	82%

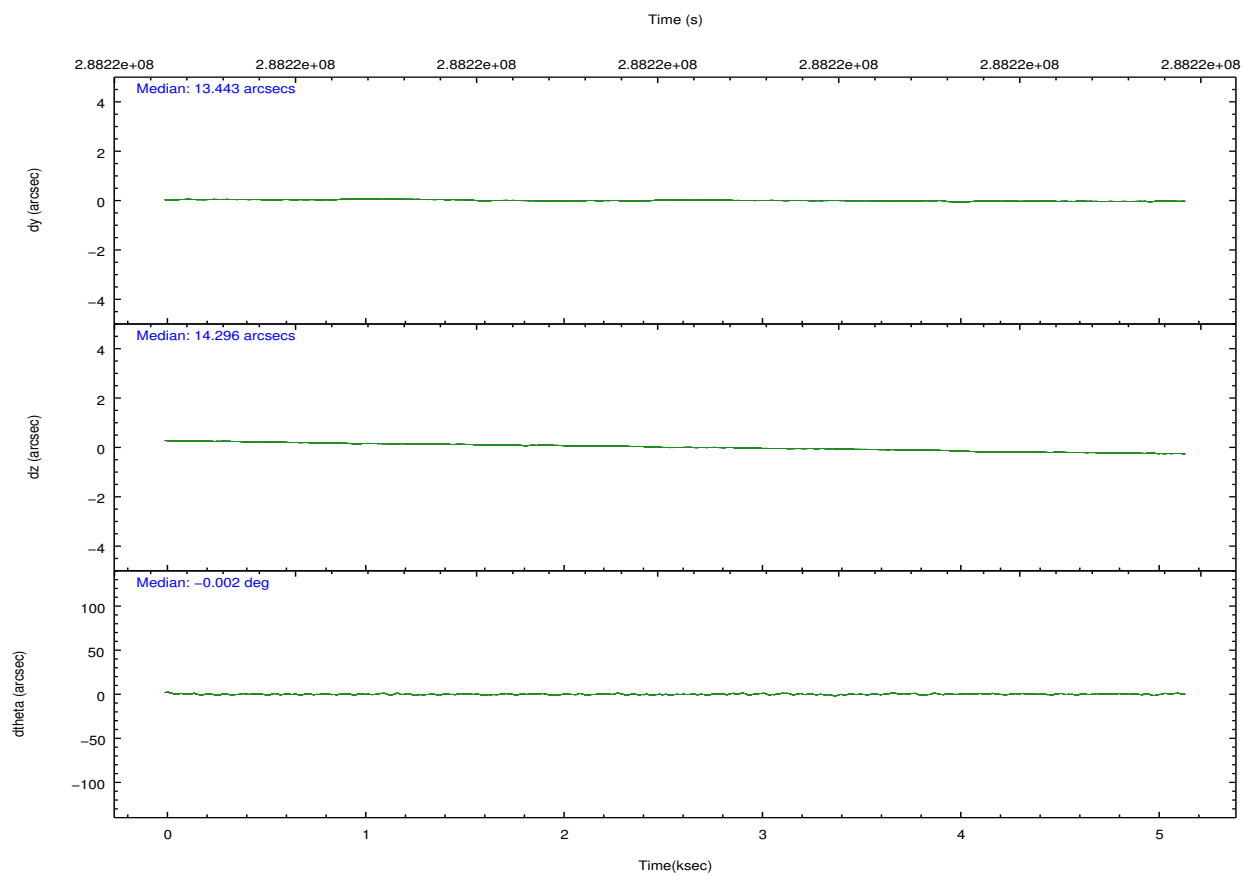
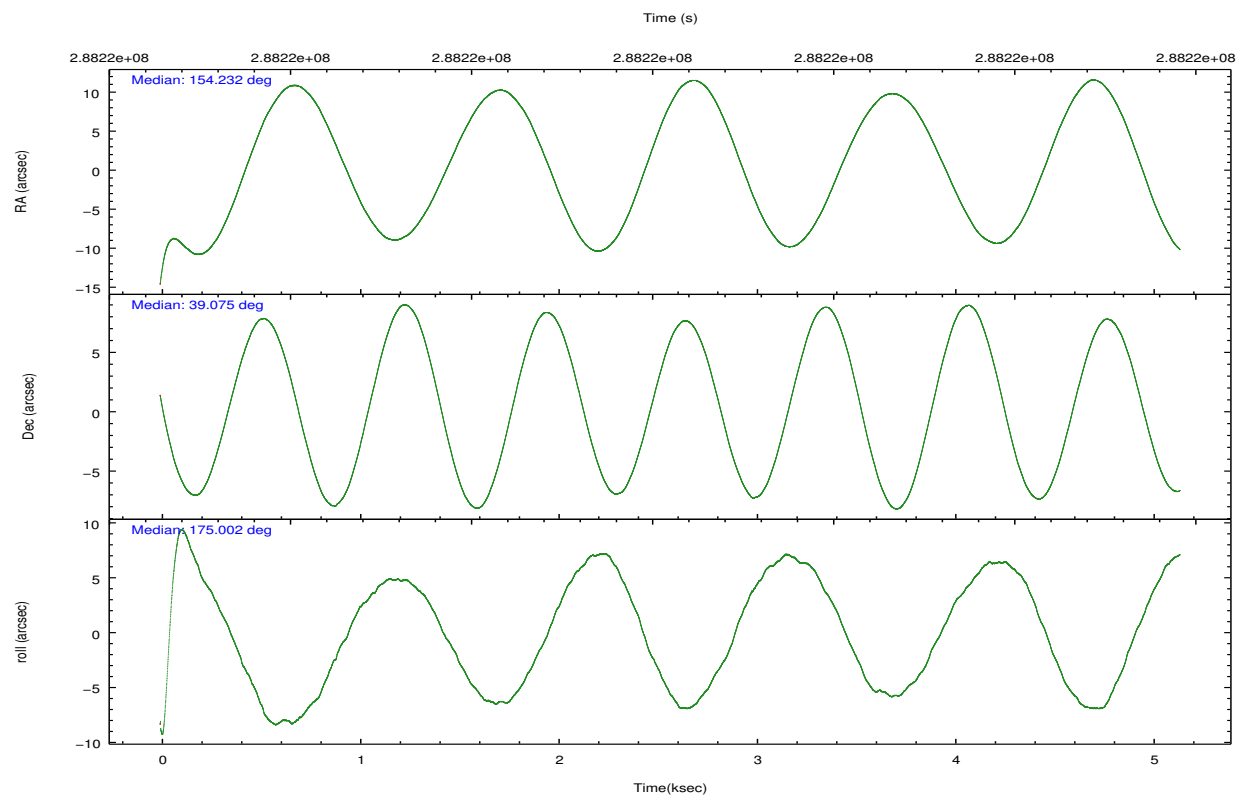
	ccd 0	ccd 1	ccd 2	ccd 3
grade 0 events	1370	1412	1459	5003
	3%	4%	3%	12%
grade 1 events	29	17	20	54
	0%	0%	0%	0%
grade 2 events	769	735	763	1046
	2%	2%	1%	2%
grade 3 events	378	405	333	507
	1%	1%	0%	1%
grade 4 events	364	398	383	482
	1%	1%	0%	1%
grade 5 events	619	718	597	776
	1%	2%	1%	1%
grade 6 events	525	604	439	607
	1%	1%	1%	1%
grade 7 events	32133	29505	35531	31993
	88%	87%	89%	79%

2.2 Compared Parameters

Parameter	Planned	Actual	Parameter	Planned	Actual
Instrument	ACIS	ACIS	Obspar format version number	7	7
Detector	ACIS-0123	ACIS-0123	Obspar file type	PREDICTED	ACTUAL
Grating	NONE	NONE	Obspar update status	NONE	UPDATED
Data mode	VFAINT	VFAINT	Number of optional ACIS chips dropped	0	0
Observation mode	POINTING	POINTING	On-chip summing requested	N	N
[deg] Pointing RA	154.263608	154.2314763039383	Subarray requested	NONE	NONE
[deg] Pointing Dec	39.086709	39.0749016760853	Alternating exposures requested	N	N
[deg] Pointing Roll	174.781921	175.0108131075386	[s] Primary exposure time	0.000000	3.1
[mm] SIM focus pos	-0.782348	-0.7809083437167272			
[mm] SIM defocus	0	0.001439871863259334			
[mm] SIM translation stage pos	-233.592463	-233.5874344608287			
[mm] SIM translation stage offset	0	-0.005018542100998502			
[s] Observation start time (MET)	288217667.184000	288216399.66771			
Observation start date	2007-02-18T20:26:42	2007-02-18T20:06:39			
[s] Observation end time (MET)	288222667.184000	288223559.29305			
Observation end date	2007-02-18T21:50:02	2007-02-18T22:05:59			
Read mode	TIMED	TIMED			

2.3 Aspect



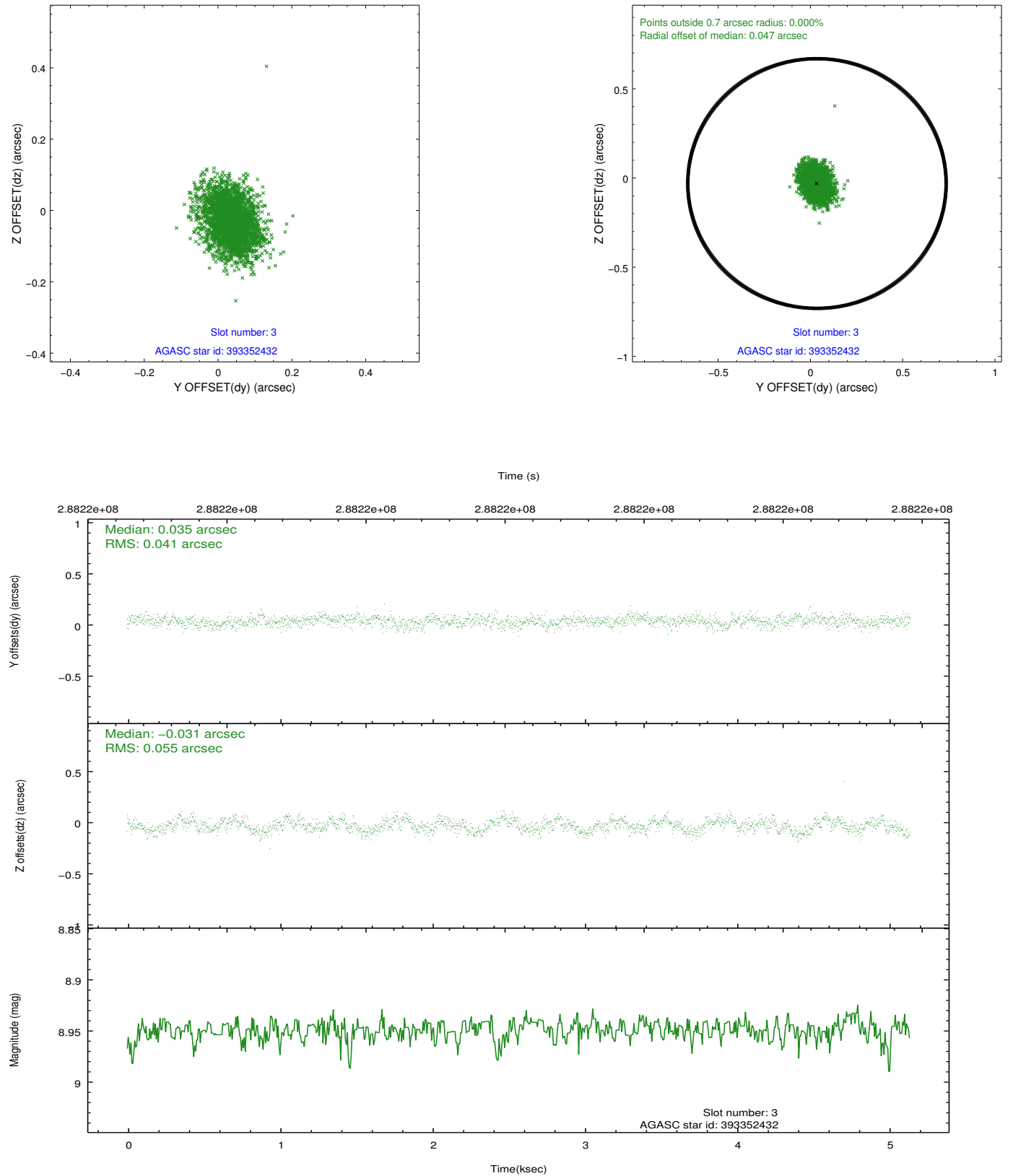


Slot Statistics

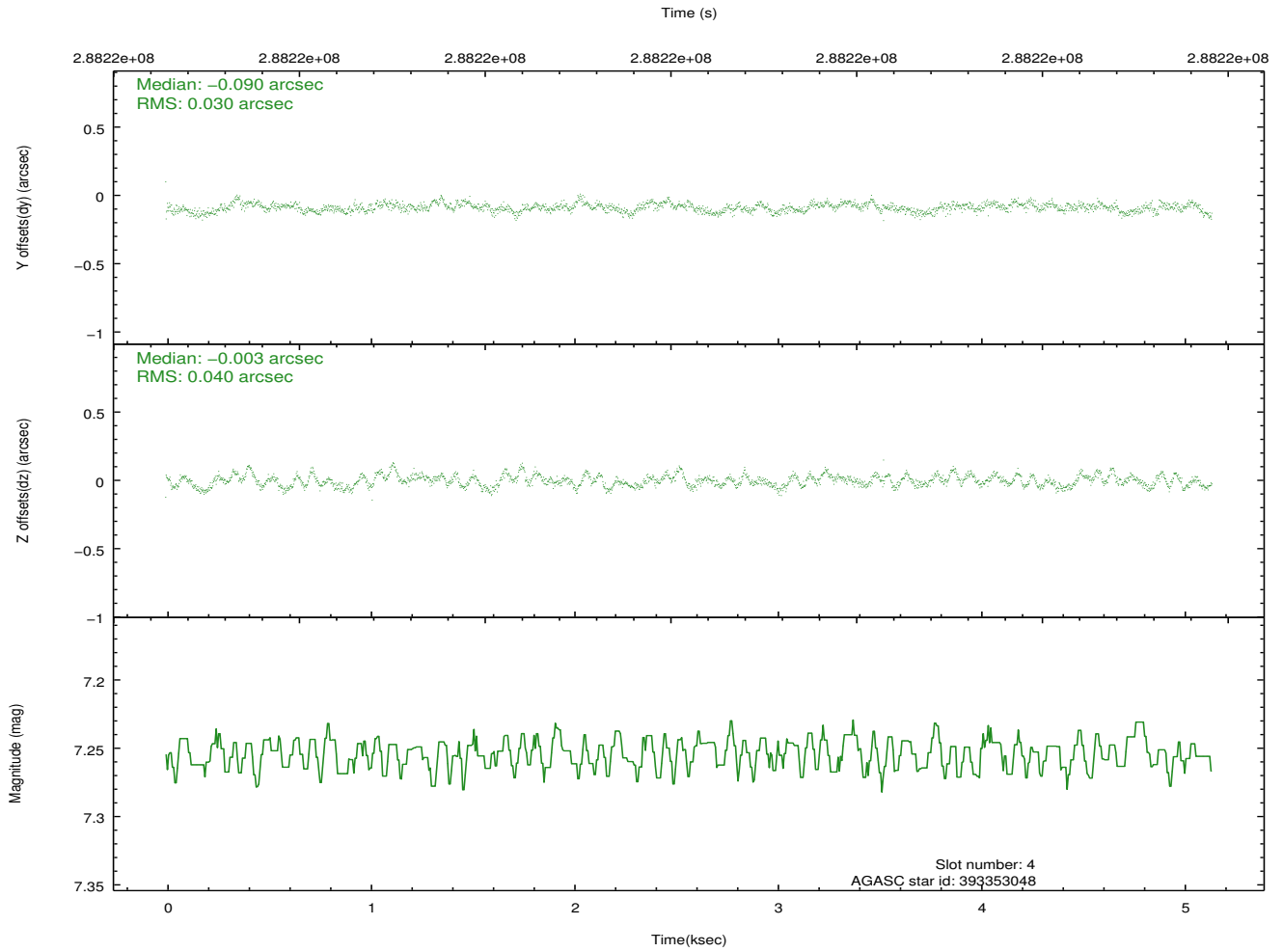
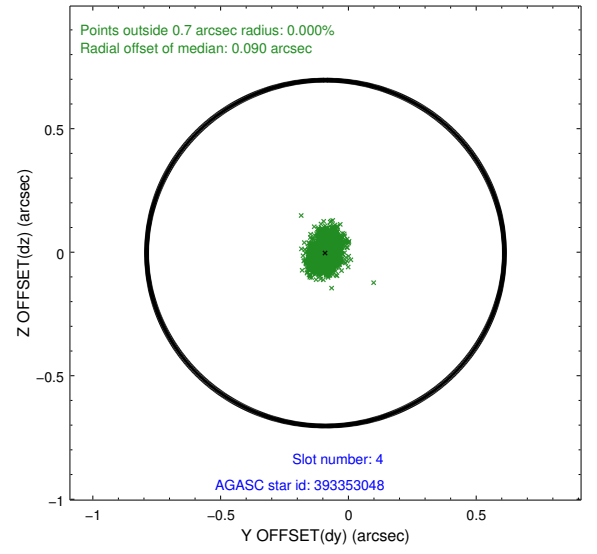
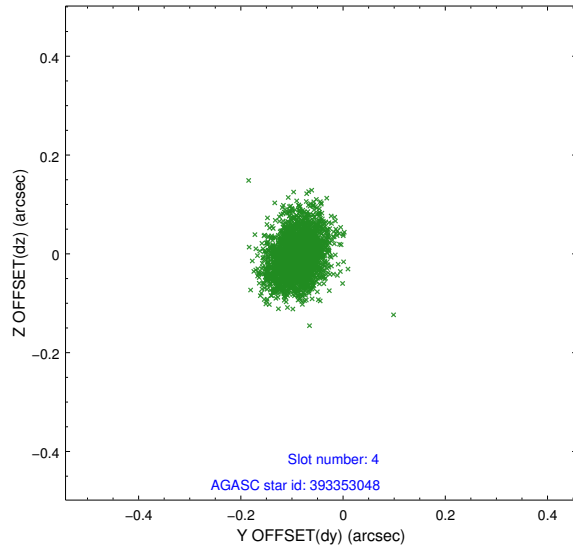
slot	status	id	mag	n_pts	med_dy	med_dz	dr1	dr2	ra	dec	mean_y	mean_z
0	FID	ACIS-I-1	7.23	1255	-0.017	0.014	0.010	0.018	0.000000	0.000000	926.04	-837.87
1	FID	ACIS-I-4	7.17	1254	0.204	0.022	0.008	0.014	0.000000	0.000000	2146.96	1061.35
2	FID	ACIS-I-5	7.22	1254	-0.285	0.035	0.007	0.012	0.000000	0.000000	-1820.71	1060.57
3	GUIDE	393352432	8.95	2506	0.035	-0.031	0.073	0.118	154.550258	38.814649	-889.56	900.84
4	GUIDE	393353048	7.25	2509	-0.090	-0.003	0.053	0.088	154.693543	39.311519	-1119.03	-917.54
5	GUIDE	393354032	9.05	2502	0.010	-0.082	0.107	0.169	154.259481	38.515802	-176.42	2047.77
6	GUIDE	393353792	9.29	2508	0.175	0.103	0.107	0.170	153.431902	39.338854	2389.94	-702.82
7	GUIDE	393349096	9.80	2507	-0.125	0.028	0.128	0.218	154.085363	39.755231	711.51	-2352.57

2.4 Star Slots

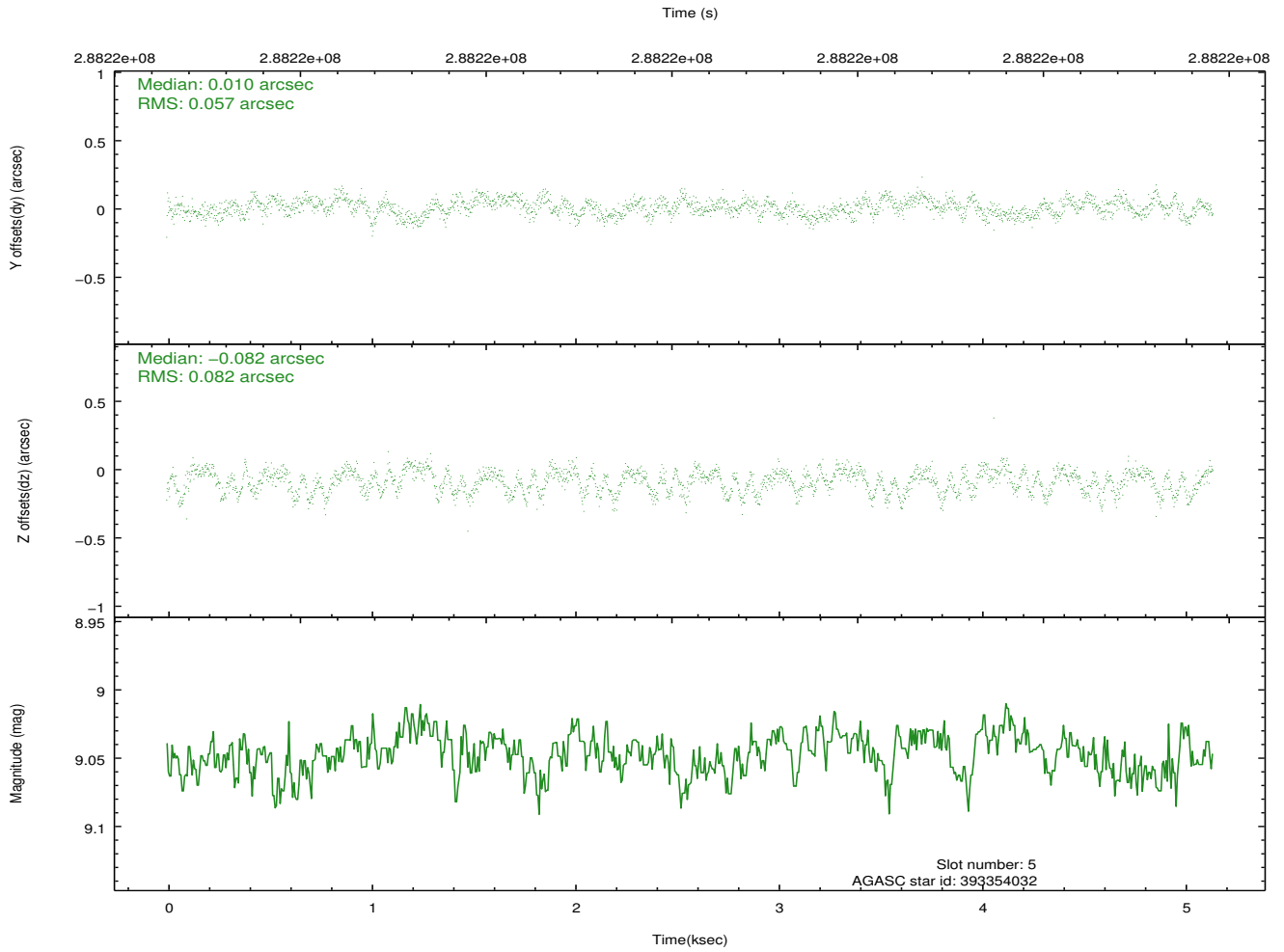
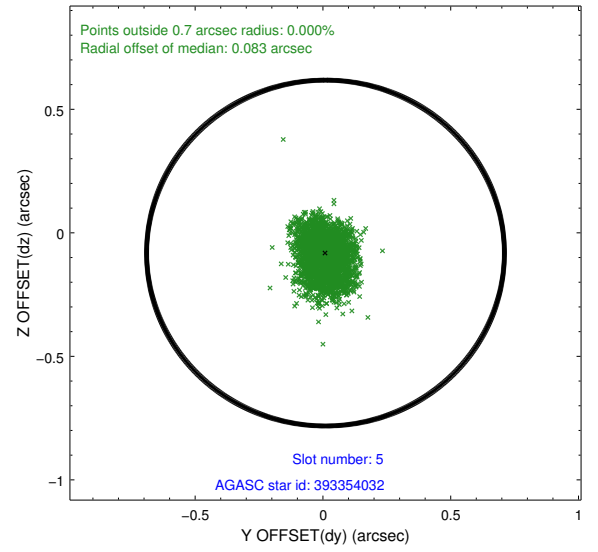
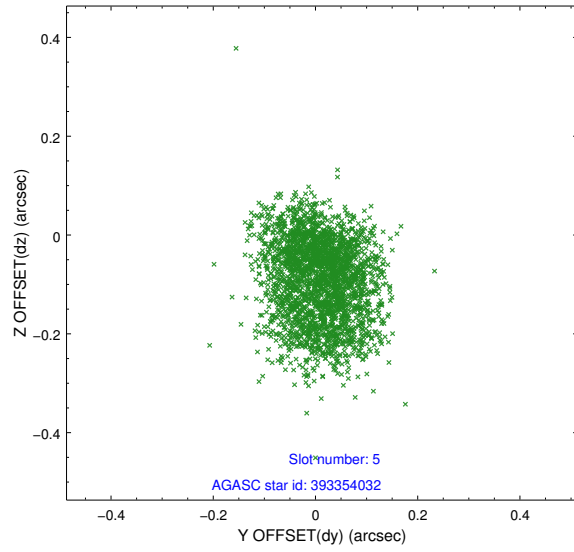
2.4.1 Slot 3



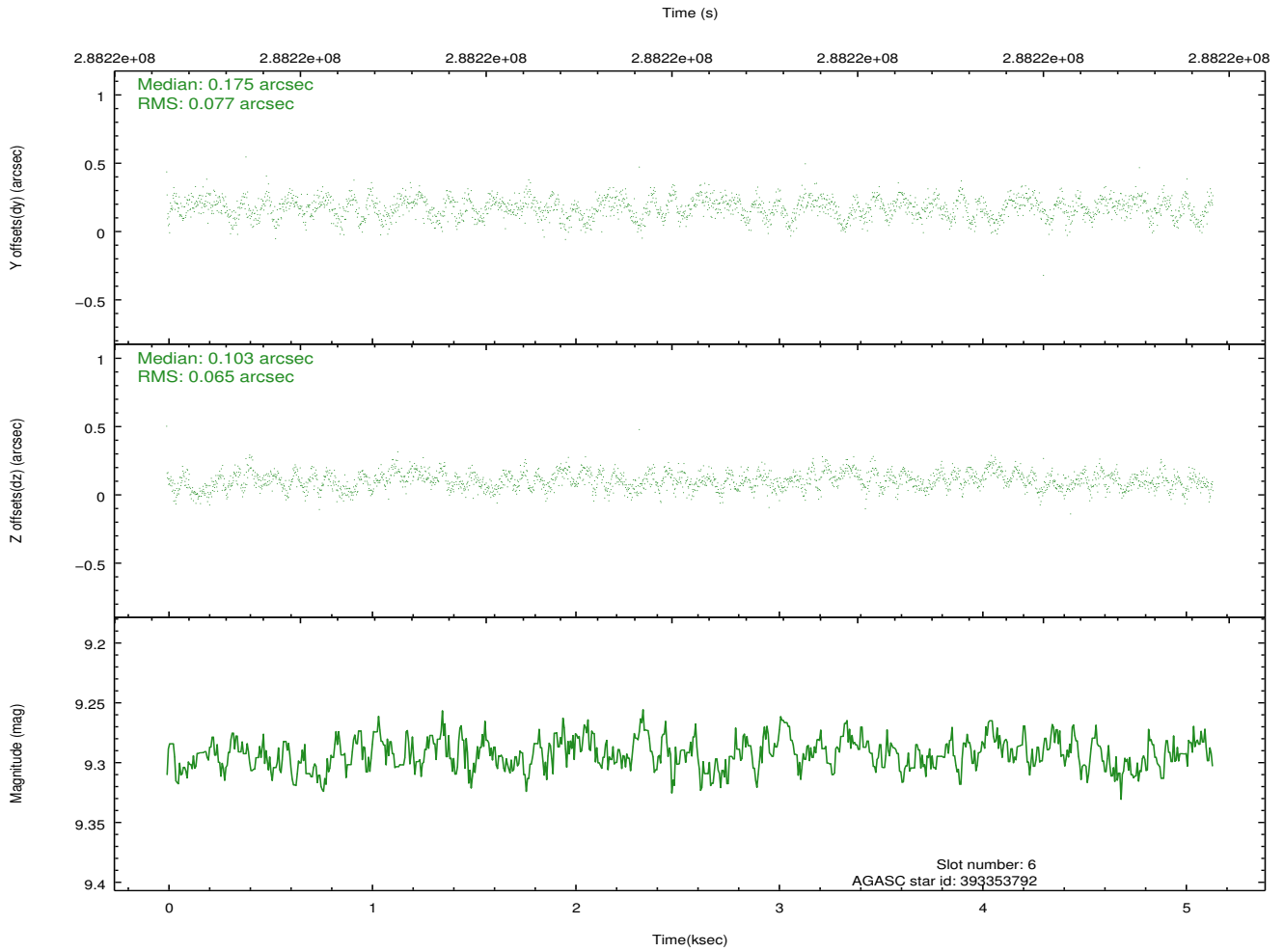
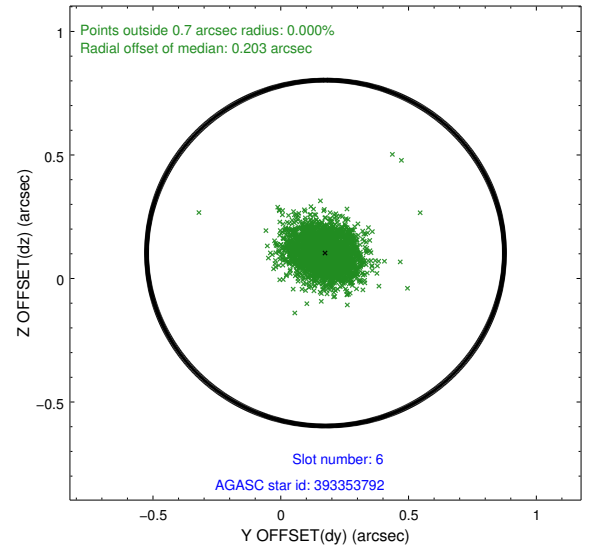
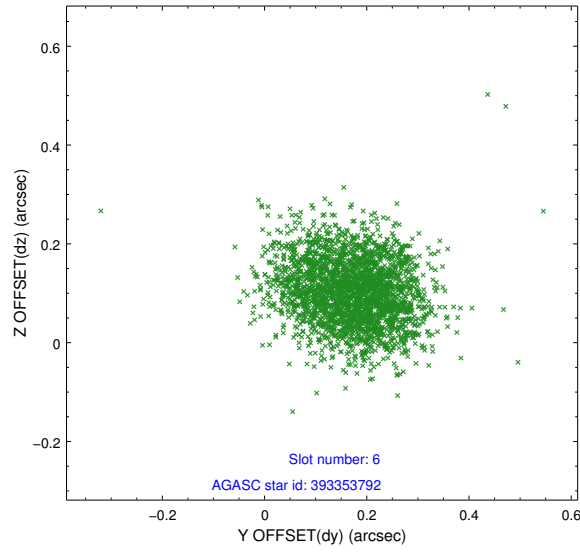
2.4.2 Slot 4



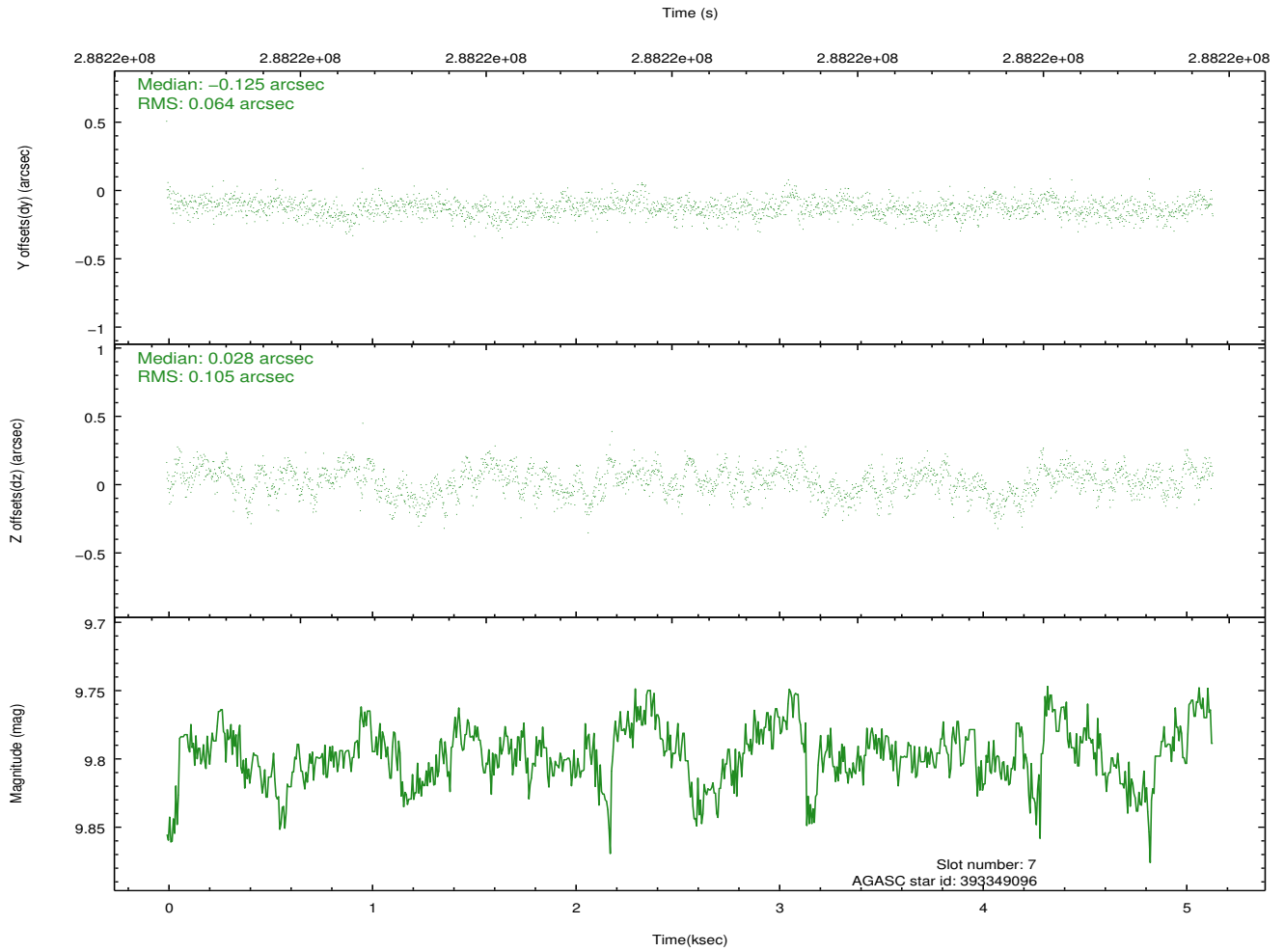
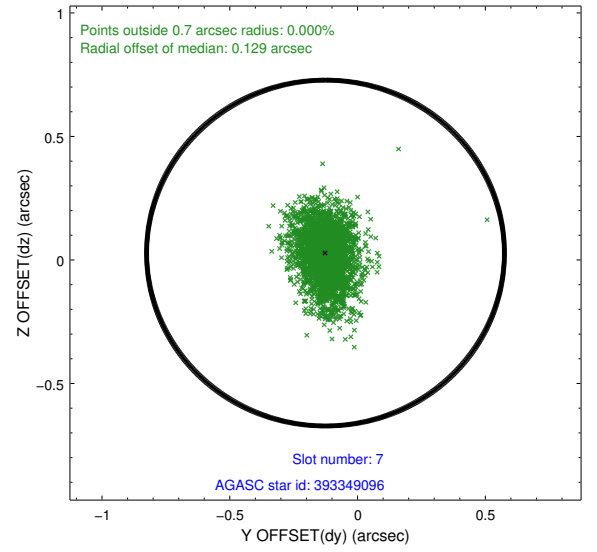
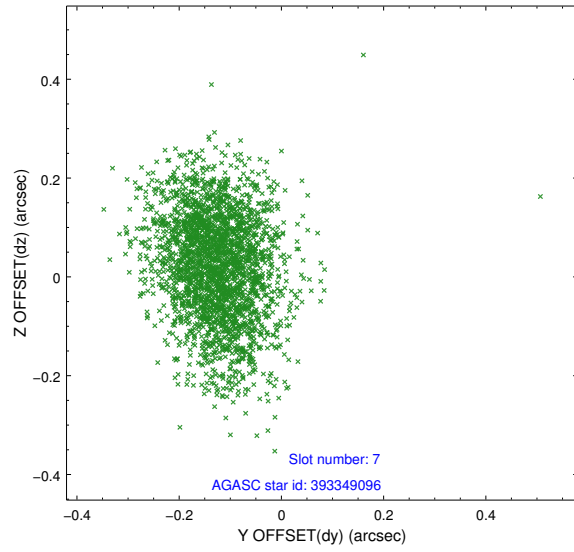
2.4.3 Slot 5



2.4.4 Slot 6

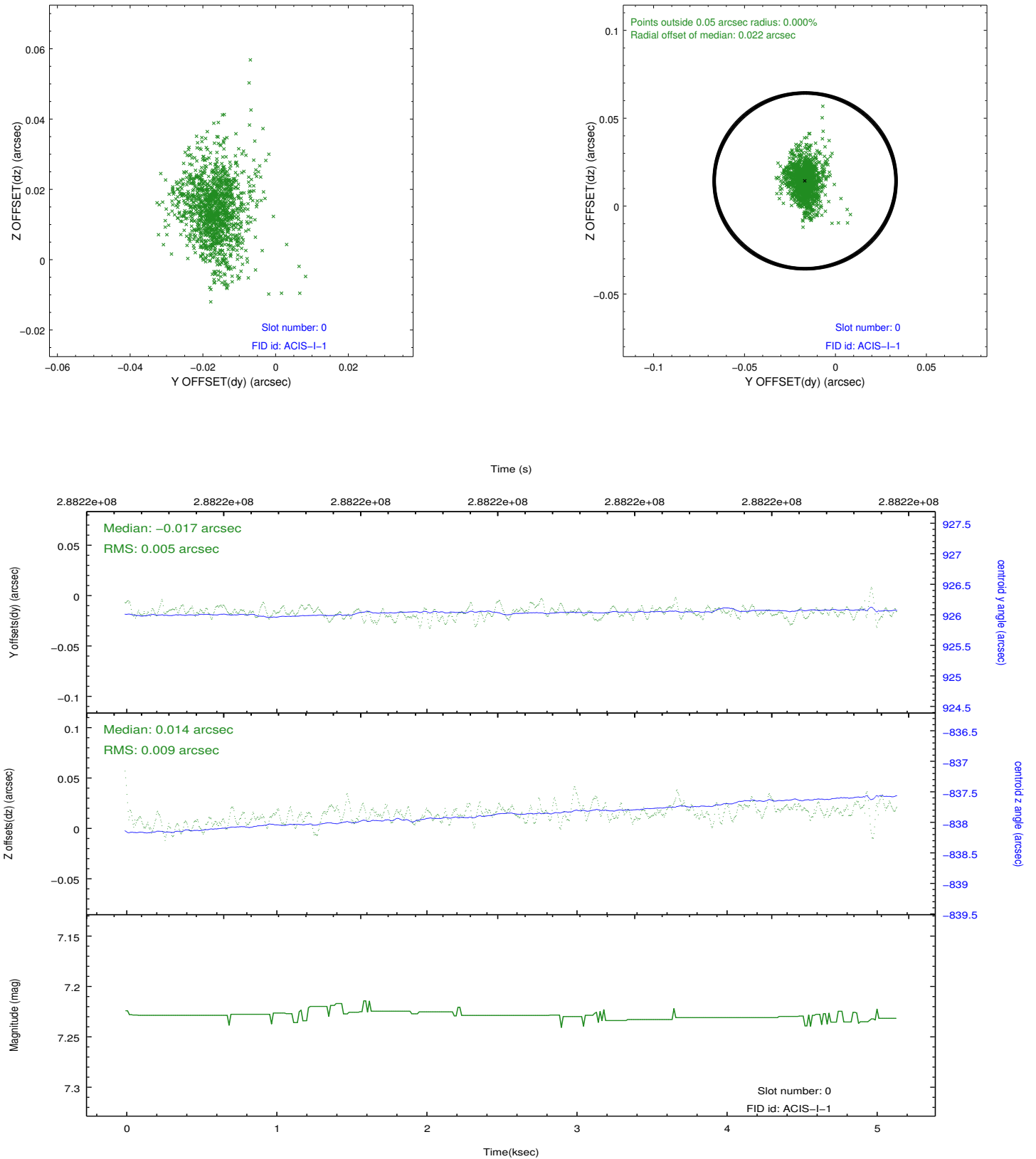


2.4.5 Slot 7

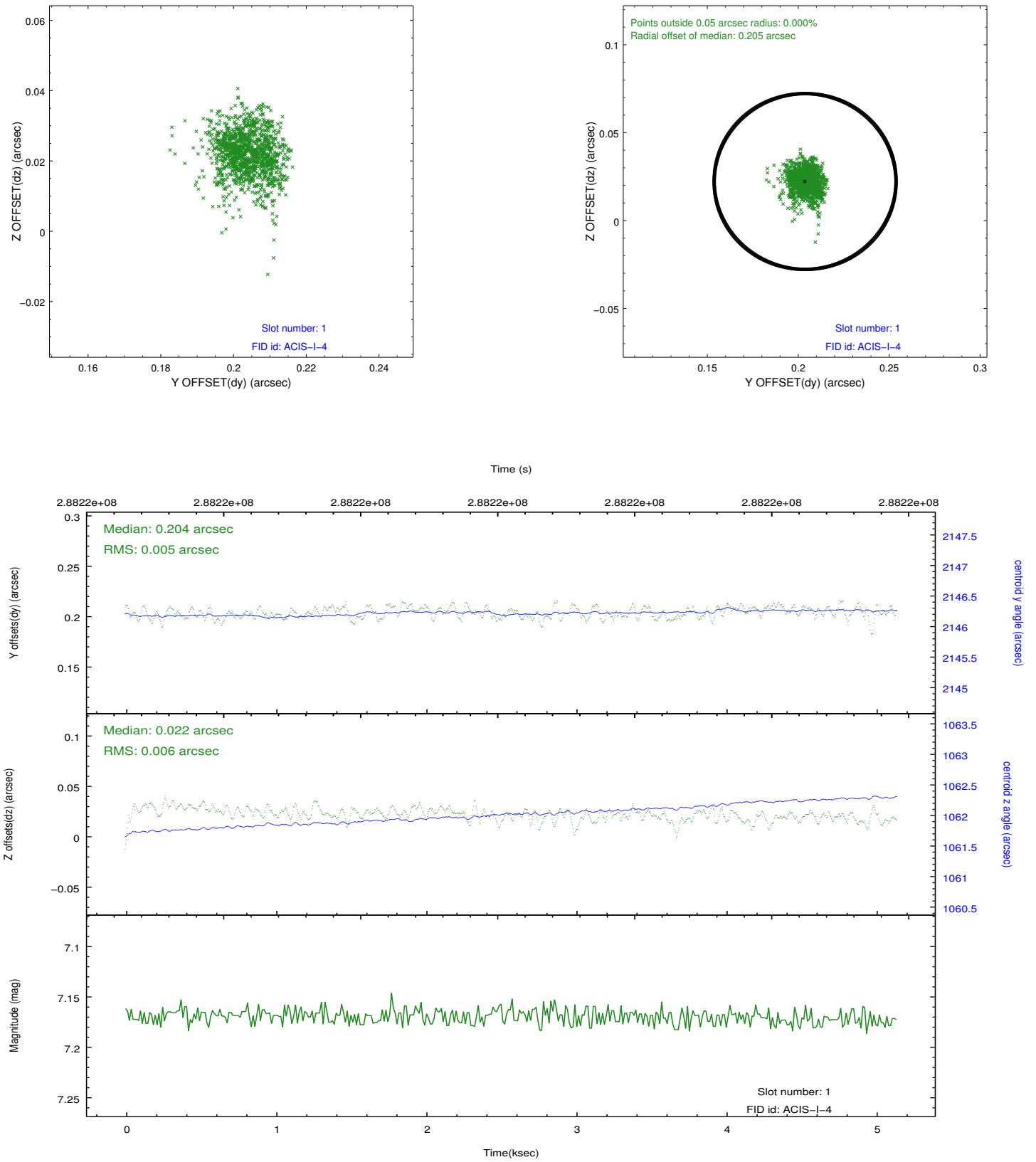


2.5 FID Slots

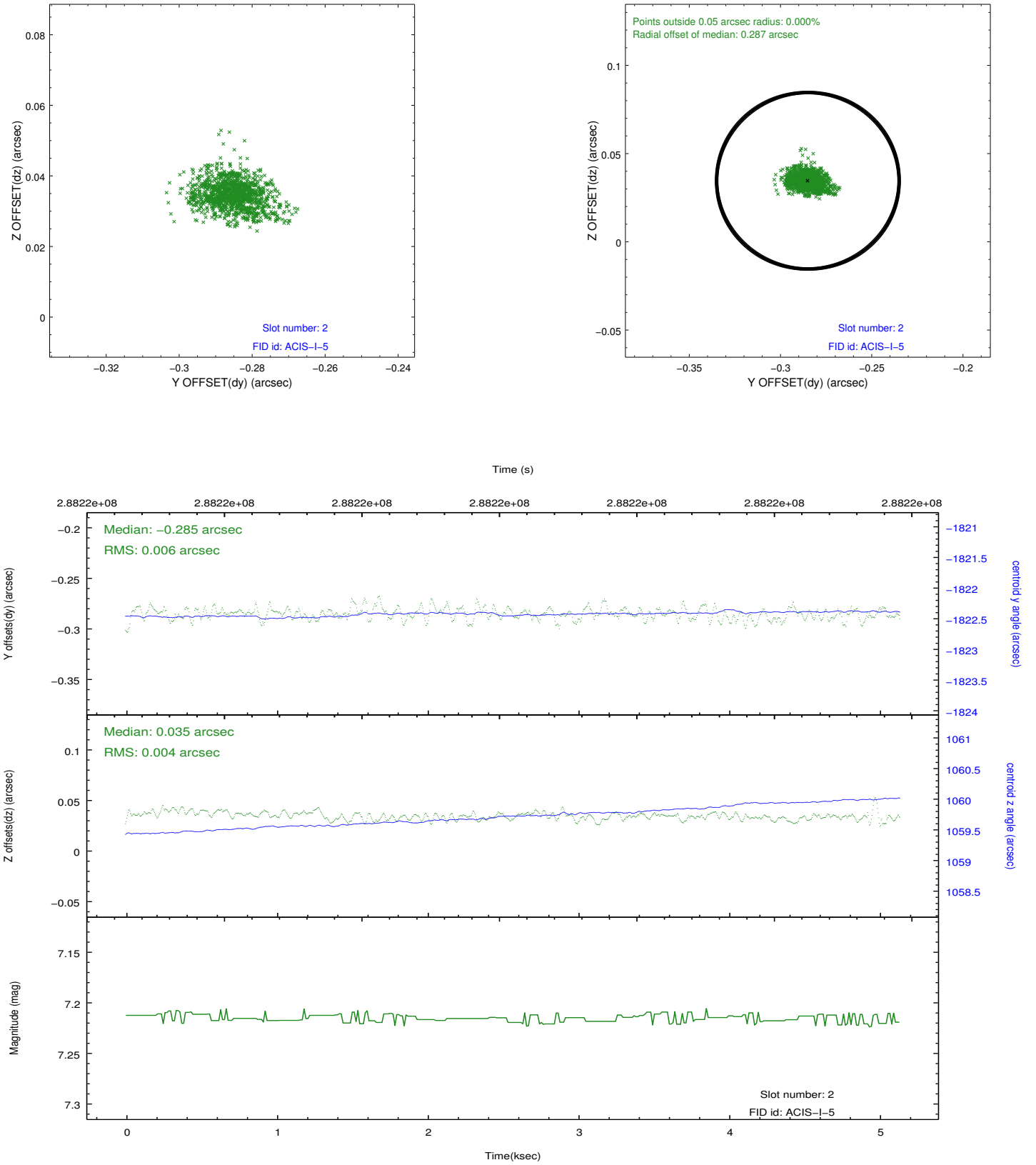
2.5.1 Slot 0



2.5.2 Slot 1



2.5.3 Slot 2



A Summary

A.1 Status

V&V Scientist	Beth Sundheim
V&V Date (YYYY-MM-DD)	2012.04.22
V&V Edition	1
V&V Disposition and Status	OK
V&V Charge Time	5.13670003

A.2 Comments