

# V&V Reference Report

## L2 ASCDS Version : 8.4.4

Observation 7687 - L2 Version 2  
Chandra X-Ray Center

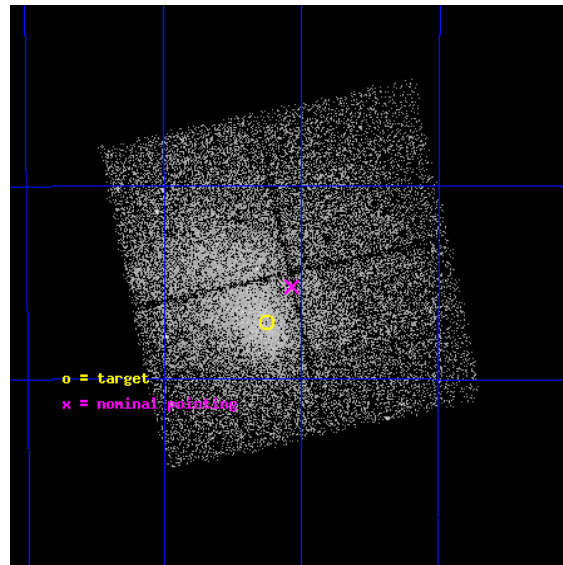
L2 Processing Date : Apr 26 2012

## Contents

<b>1</b>	<b>Front</b>	<b>2</b>
<b>2</b>	<b>OBI</b>	<b>3</b>
2.1	OBI . . . . .	3
2.1.1	Images . . . . .	3
2.1.2	Bias . . . . .	3
2.1.3	Parameters . . . . .	4
2.1.4	Events . . . . .	4
2.2	Compared Parameters . . . . .	5
2.3	Aspect . . . . .	6
2.4	Star Slots . . . . .	9
2.4.1	Slot 3 . . . . .	9
2.4.2	Slot 4 . . . . .	10
2.4.3	Slot 5 . . . . .	11
2.4.4	Slot 6 . . . . .	12
2.4.5	Slot 7 . . . . .	13
2.5	FID Slots . . . . .	14
2.5.1	Slot 0 . . . . .	14
2.5.2	Slot 1 . . . . .	15
2.5.3	Slot 2 . . . . .	16
<b>A</b>	<b>Summary</b>	<b>17</b>
A.1	Status . . . . .	17
A.2	Comments . . . . .	17

# 1 Front

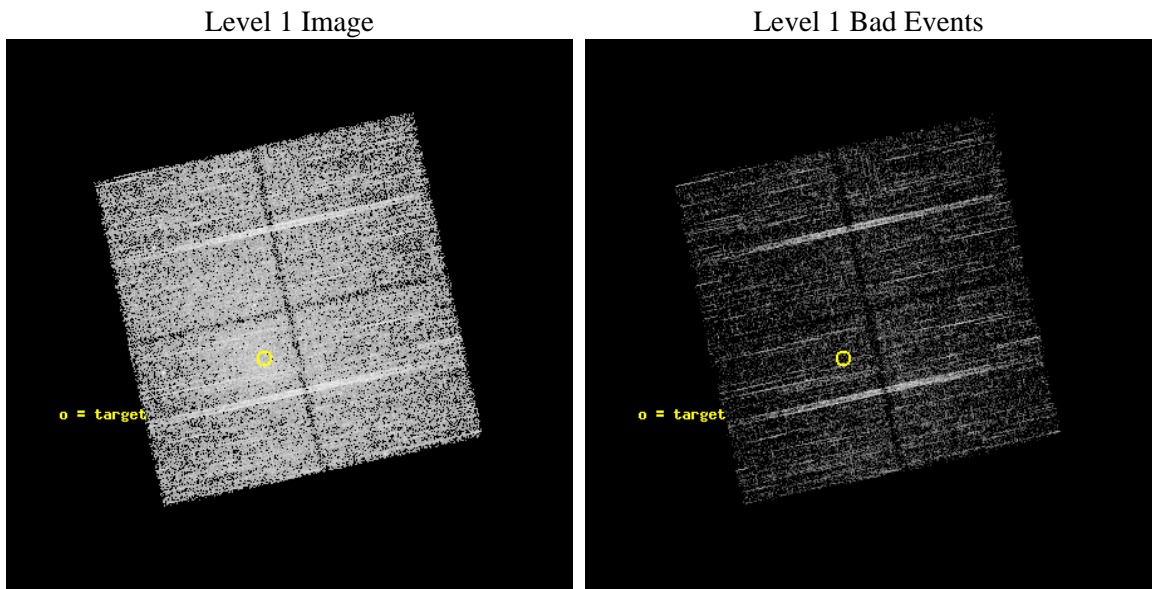
seq_num	701355	Sequence number
obs_id	7687	Observation id
title	Snapshot Survey for X-ray Outbursts in Rich Clusters of Galaxies	P
observer	Professor Gordon Garmire	Principal investigator
object	ABELL3266	Source name
dtcycle	0	&#160
cycle	P	events from which exps? Prim/Second/Both
ra_targ	67.812917	Observer's specified target RA [deg]
dec_targ	-61.451111	Observer's specified target Dec [deg]
ra_nom	67.76754173452	Nominal RA [deg]
dec_nom	-61.420668645366	Nominal Dec [deg]
roll_nom	167.70394542695	Nominal Roll [deg]
revision	2	Processing version of data
ontime	5056.1000388861	Sum of GTIs [s]
livetime	4990.0383696313	Livetime [s]
ontime0	5052.9590786099	Sum of GTIs [s]
ontime1	5056.1000388861	Sum of GTIs [s]
ontime2	5056.1000388861	Sum of GTIs [s]
ontime3	5056.1000388861	Sum of GTIs [s]
l2events	38851	Number of level 2 events



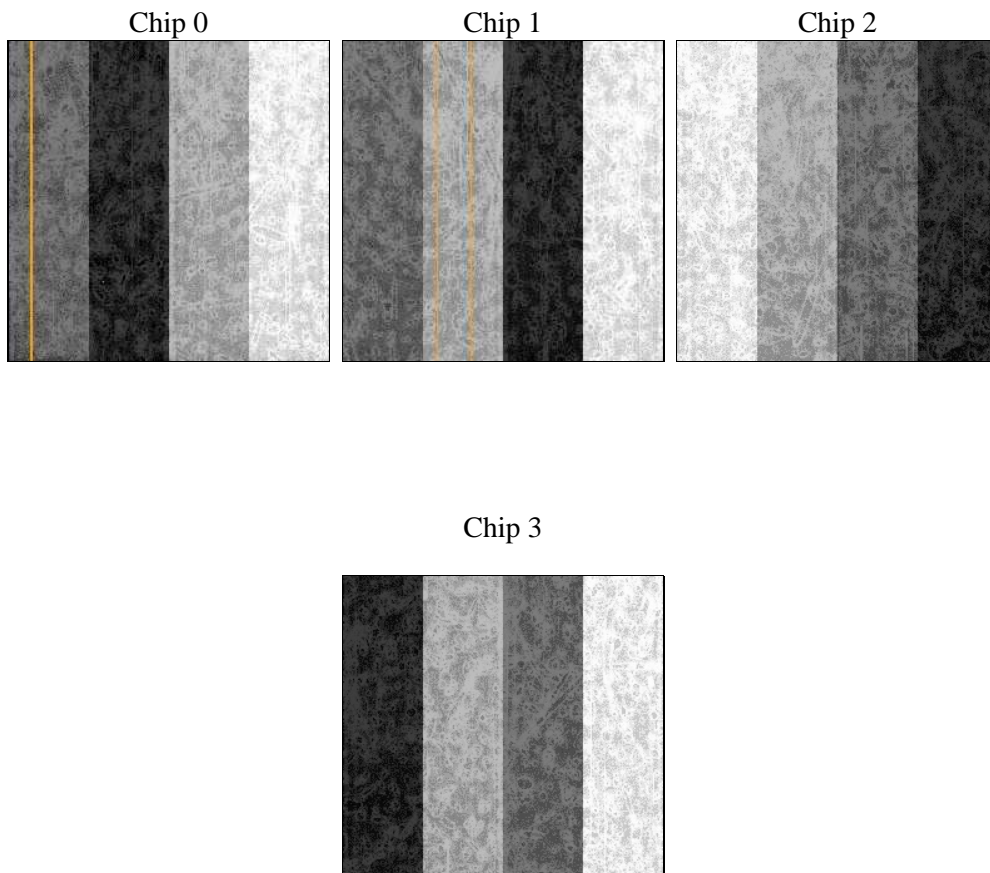
## 2 OBI

### 2.1 OBI

#### 2.1.1 Images



#### 2.1.2 Bias



### 2.1.3 Parameters

obi_num	0	Obi number	sched_exp_time	5000.000000	[s] Scheduled observation exposure time
ascdsver	8.4.4	Processing system revision	ontime	5056.1000388861	Sum of GTIs [s]
caldsver	4.4.9	&#160	ontime0	5052.9590786099	Sum of GTIs [s]
date	2012-04-26T11:40:24	Date and time of file creation	ontime1	5056.1000388861	Sum of GTIs [s]
revision	2	Processing version of data	ontime2	5056.1000388861	Sum of GTIs [s]
			ontime3	5056.1000388861	Sum of GTIs [s]
			l1events	169326	Number of level 1 events

### 2.1.4 Events

	ccd 0	ccd 1	ccd 2	ccd 3
level 1 events	36992	42148	42872	47314
rejected events	29900	28815	34739	32831
rejected %	80%	68%	81%	69%

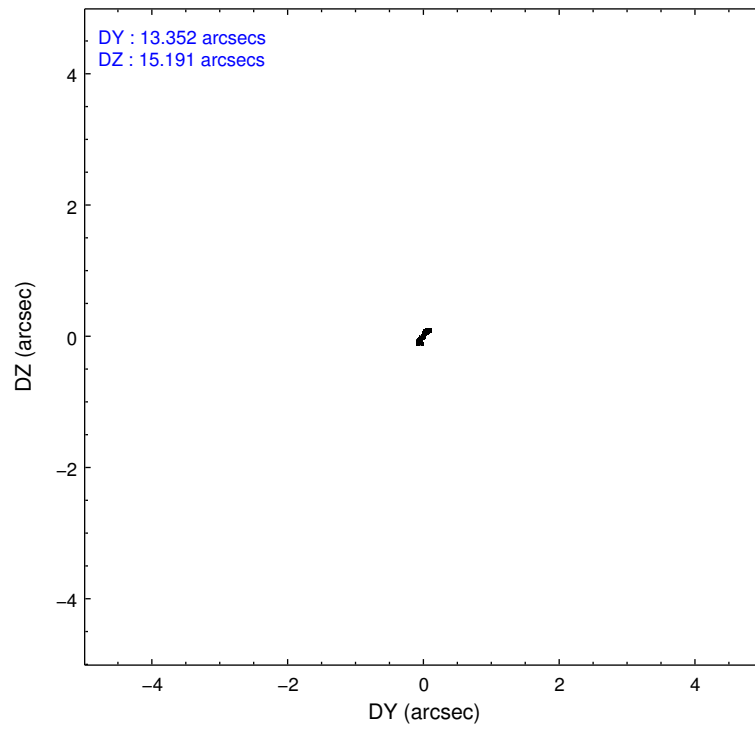
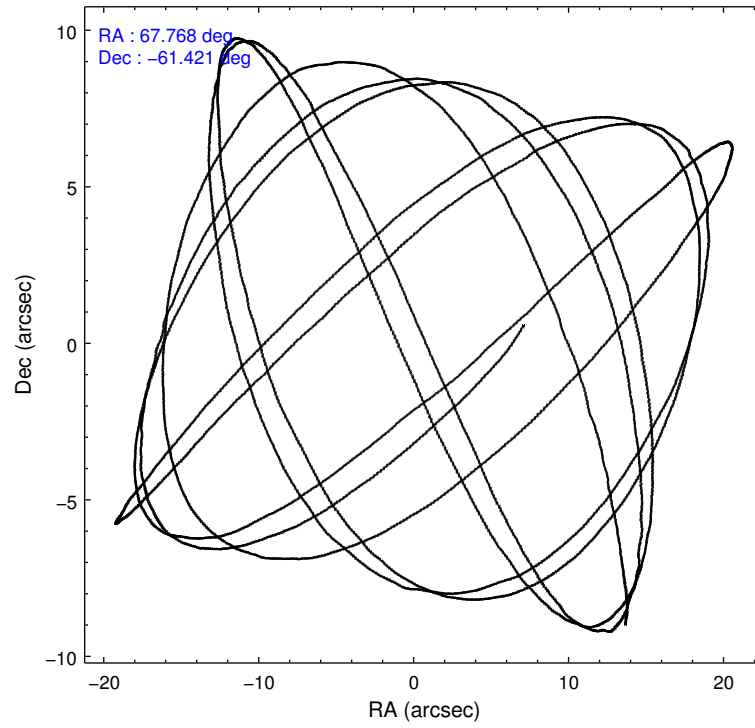
	ccd 0	ccd 1	ccd 2	ccd 3
grade 0 events	4420	9281	5315	10601
	11%	22%	12%	22%
grade 1 events	27	51	54	73
	0%	0%	0%	0%
grade 2 events	1167	1843	1310	1807
	3%	4%	3%	3%
grade 3 events	495	700	482	681
	1%	1%	1%	1%
grade 4 events	459	680	495	653
	1%	1%	1%	1%
grade 5 events	527	684	550	707
	1%	1%	1%	1%
grade 6 events	558	836	532	752
	1%	1%	1%	1%
grade 7 events	29339	28073	34134	32040
	79%	66%	79%	67%

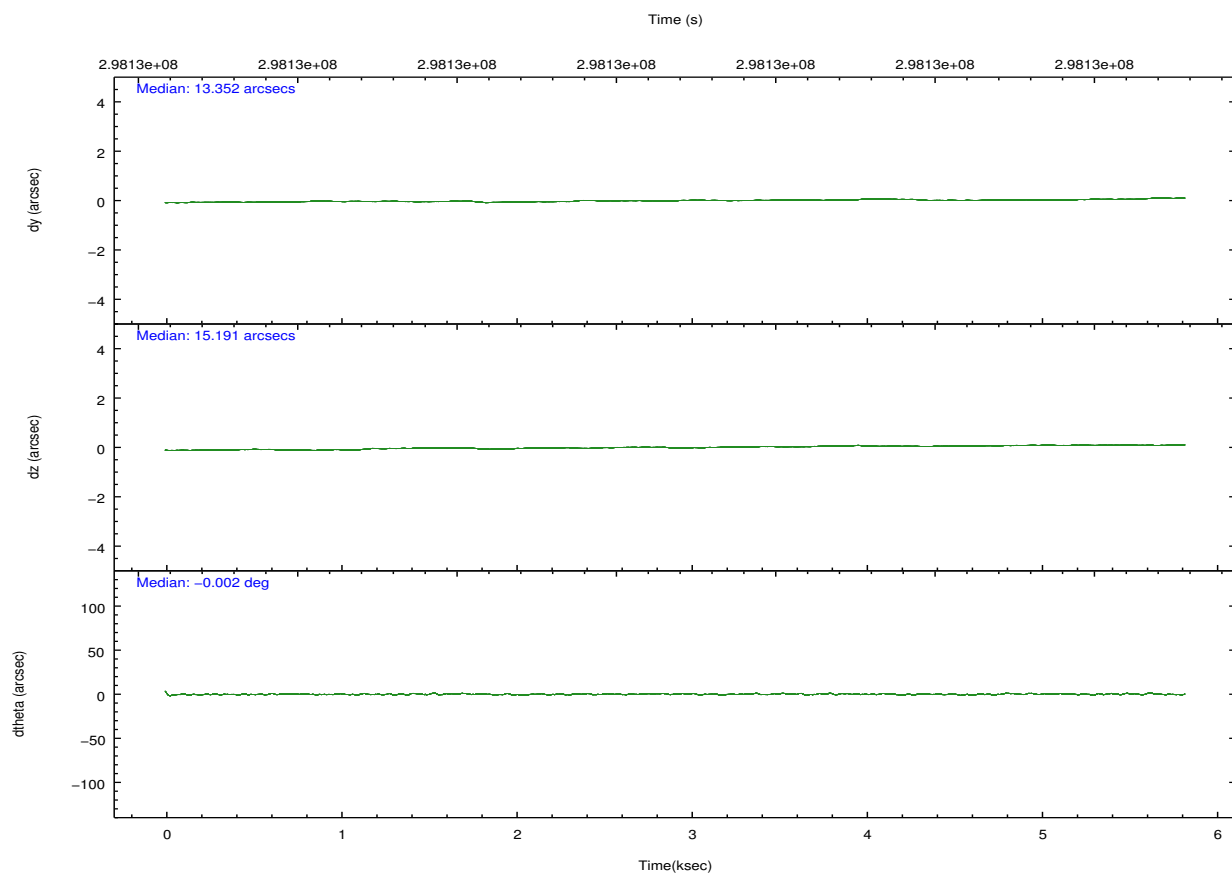
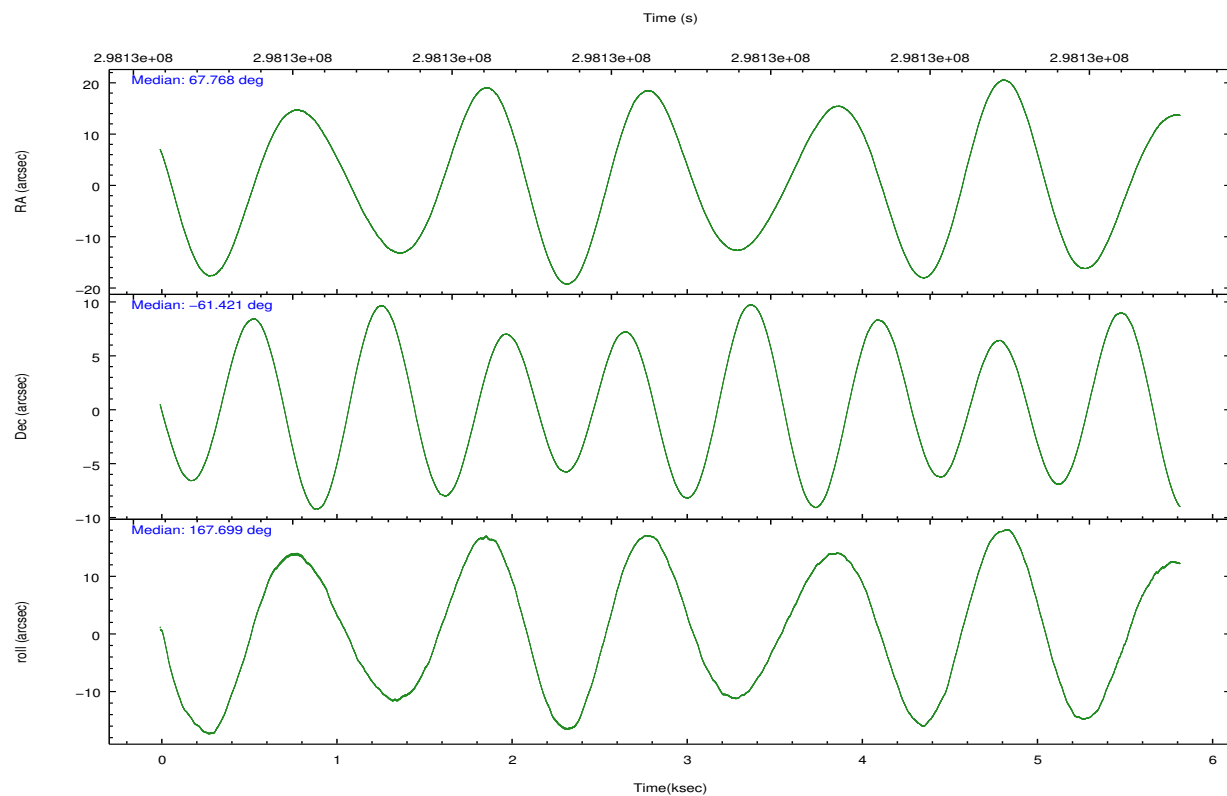


## 2.2 Compared Parameters

Parameter	Planned	Actual	Parameter	Planned	Actual
Instrument	ACIS	ACIS	Obspar format version number	7	7
Detector	ACIS-0123	ACIS-0123	Obspar file type	PREDICTED	ACTUAL
Grating	NONE	NONE	Obspar update status	NONE	UPDATED
Data mode	VFAINT	VFAINT	Number of optional ACIS chips dropped	0	0
Observation mode	POINTING	POINTING	On-chip summing requested	N	N
[deg] Pointing RA	67.822351	67.76754173452002	Subarray requested	NONE	NONE
[deg] Pointing Dec	-61.412165	-61.42066864536626	Alternating exposures requested	N	N
[deg] Pointing Roll	167.543382	167.7039454269523	[s] Primary exposure time	0.000000	3.1
[mm] SIM focus pos	-0.782348	-0.7809083437167272			
[mm] SIM defocus	0	0.001439871863259334			
[mm] SIM translation stage pos	-233.592463	-233.5874344608287			
[mm] SIM translation stage offset	0	-0.005018542100998502			
[s] Observation start time (MET)	298128269.184000	298127080.04016			
Observation start date	2007-06-13T13:23:24	2007-06-13T13:04:40			
[s] Observation end time (MET)	298133269.184000	298134082.32799			
Observation end date	2007-06-13T14:46:44	2007-06-13T15:01:22			
Read mode	TIMED	TIMED			

## 2.3 Aspect



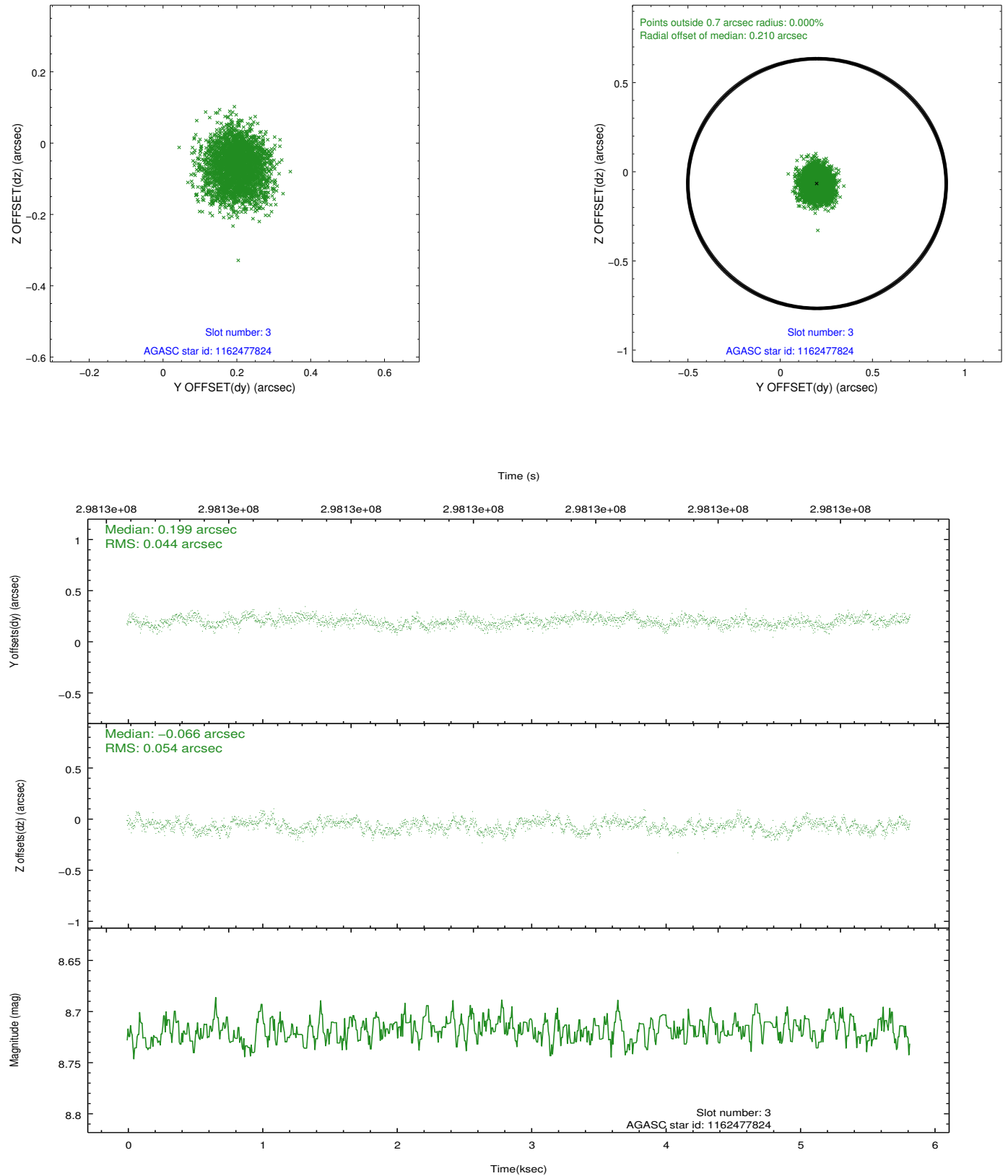


### Slot Statistics

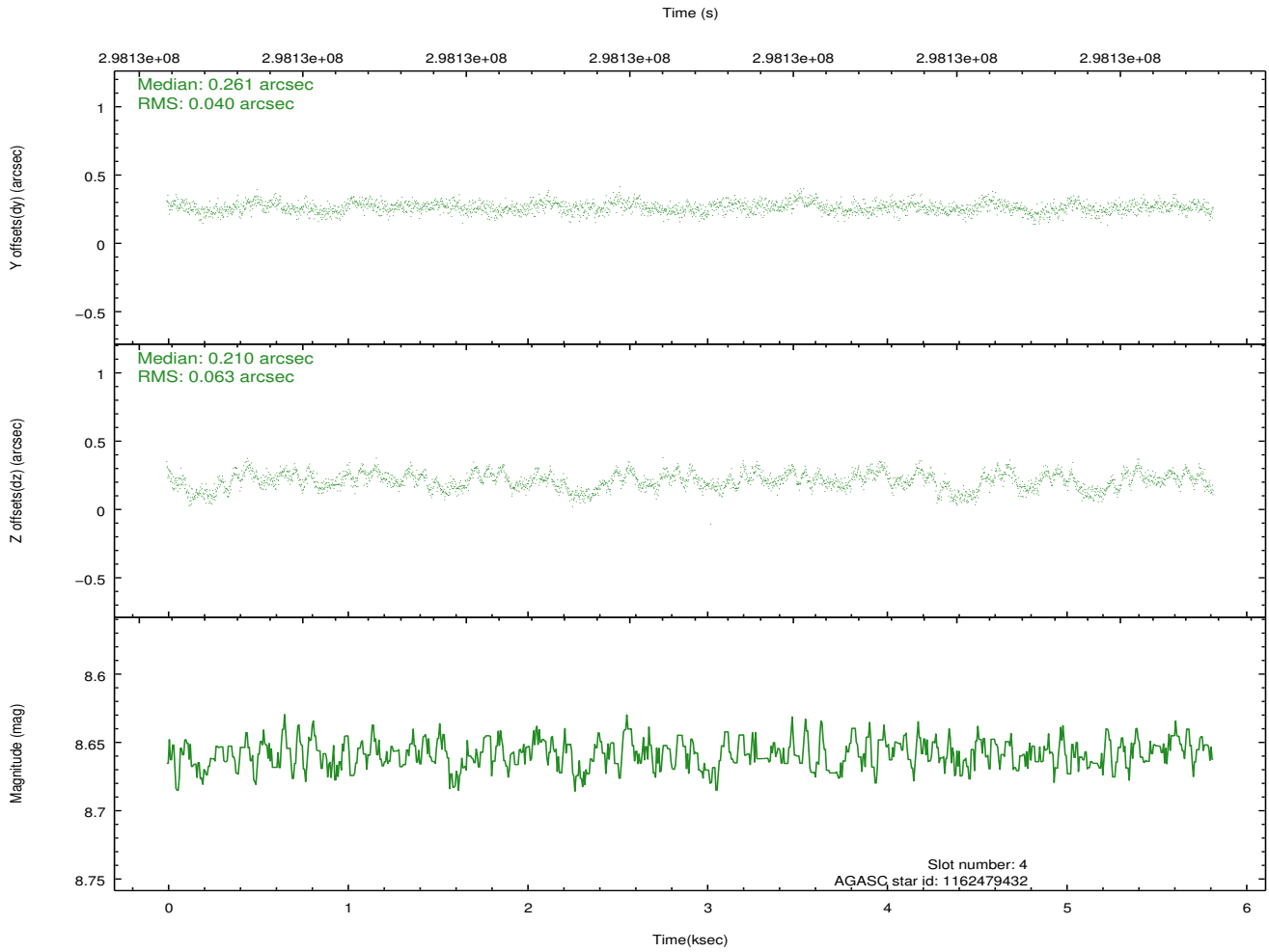
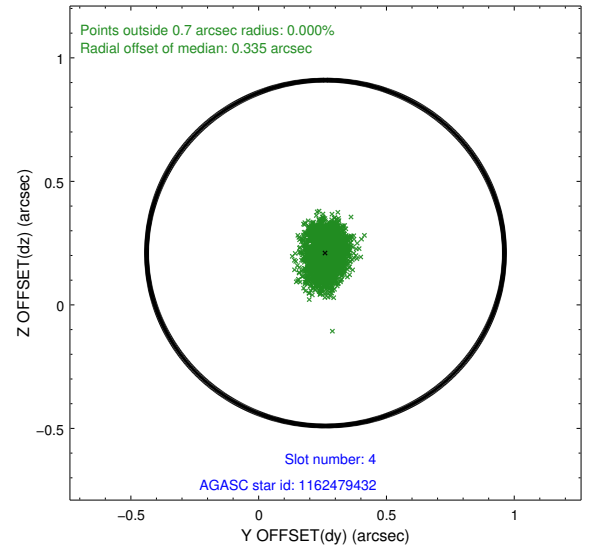
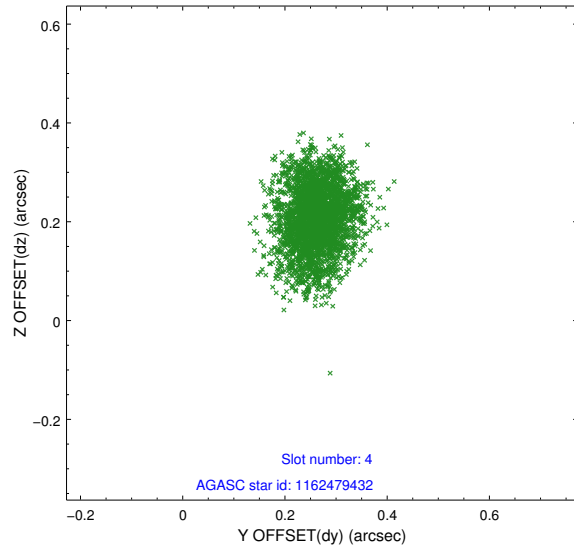
slot	status	id	mag	n_pts	med_dy	med_dz	dr1	dr2	ra	dec	mean_y	mean_z
0	FID	ACIS-I-1	7.22	1421	-0.015	-0.010	0.010	0.017	0.000000	0.000000	926.14	-838.81
1	FID	ACIS-I-4	7.15	1420	0.183	0.038	0.008	0.014	0.000000	0.000000	2146.96	1060.52
2	FID	ACIS-I-5	7.22	1421	-0.267	0.043	0.007	0.012	0.000000	0.000000	-1820.79	1059.57
3	GUIDE	1162477824	8.72	2838	0.199	-0.066	0.075	0.118	67.909814	-61.841376	-478.31	1476.55
4	GUIDE	1162479432	8.66	2837	0.261	0.210	0.079	0.130	67.973035	-61.384550	-232.22	-152.20
5	GUIDE	1162479744	7.94	2839	-0.466	-0.076	0.073	0.116	67.035797	-61.738857	1053.03	1445.37
6	GUIDE	1162482776	8.36	2842	0.017	-0.161	0.059	0.095	66.302971	-61.622094	2368.84	1327.95
7	GUIDE	1162489992	9.12	2840	-0.014	0.097	0.081	0.130	67.352253	-61.218742	946.03	-500.76

## 2.4 Star Slots

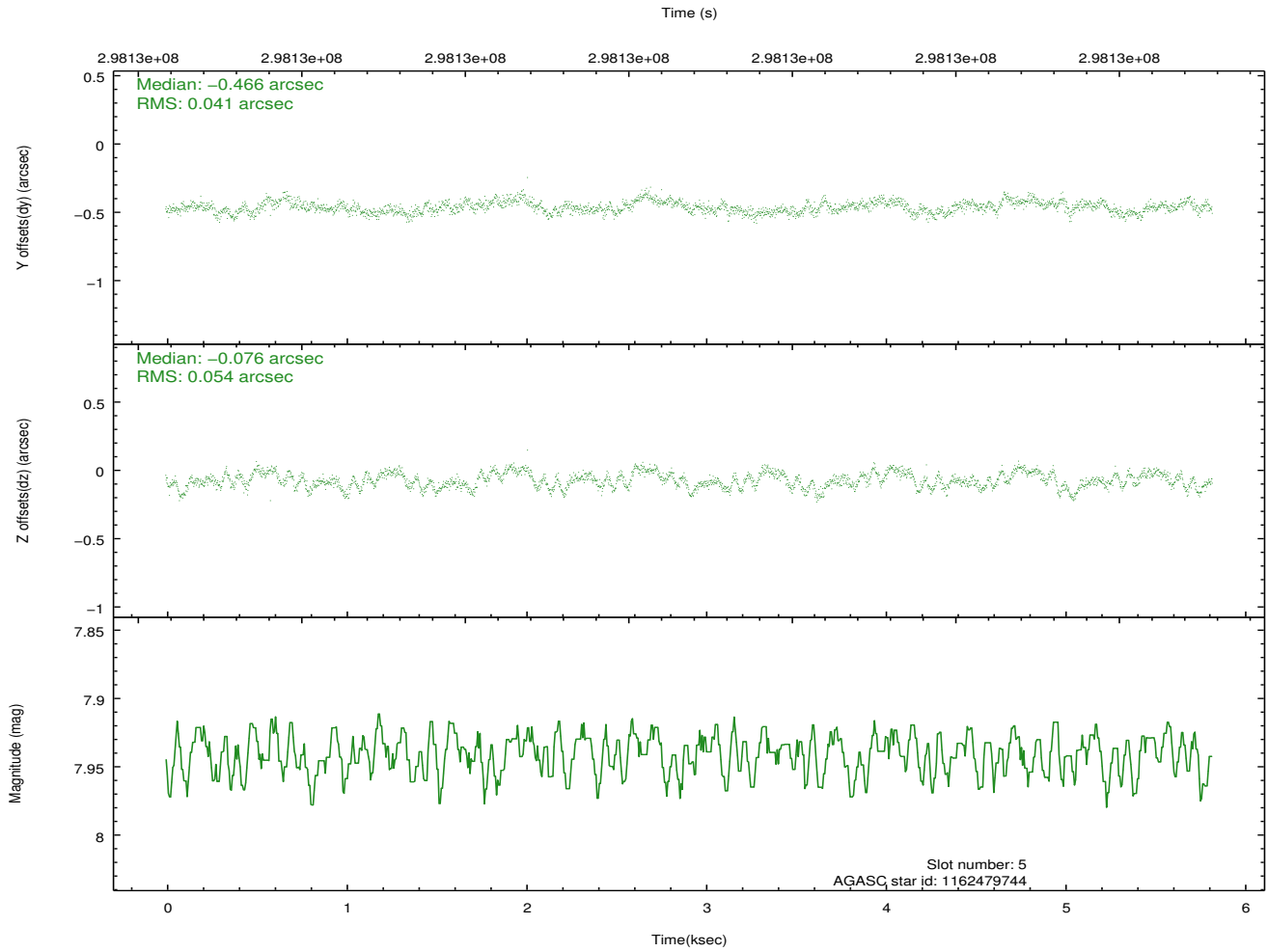
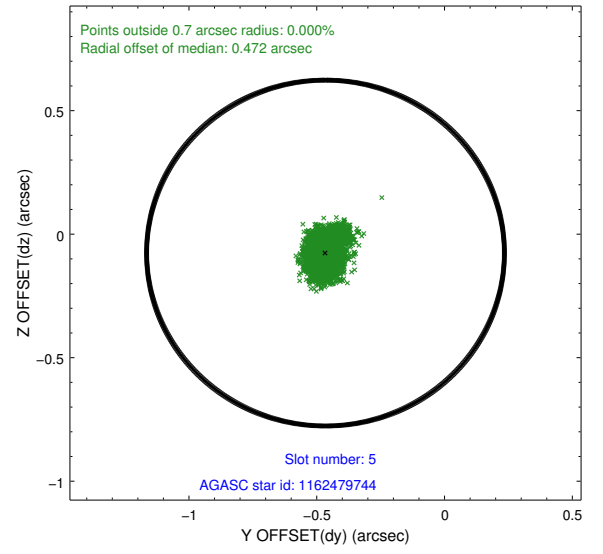
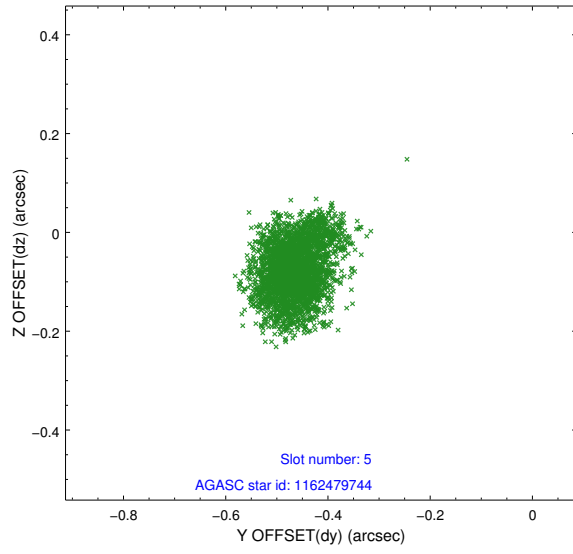
### 2.4.1 Slot 3



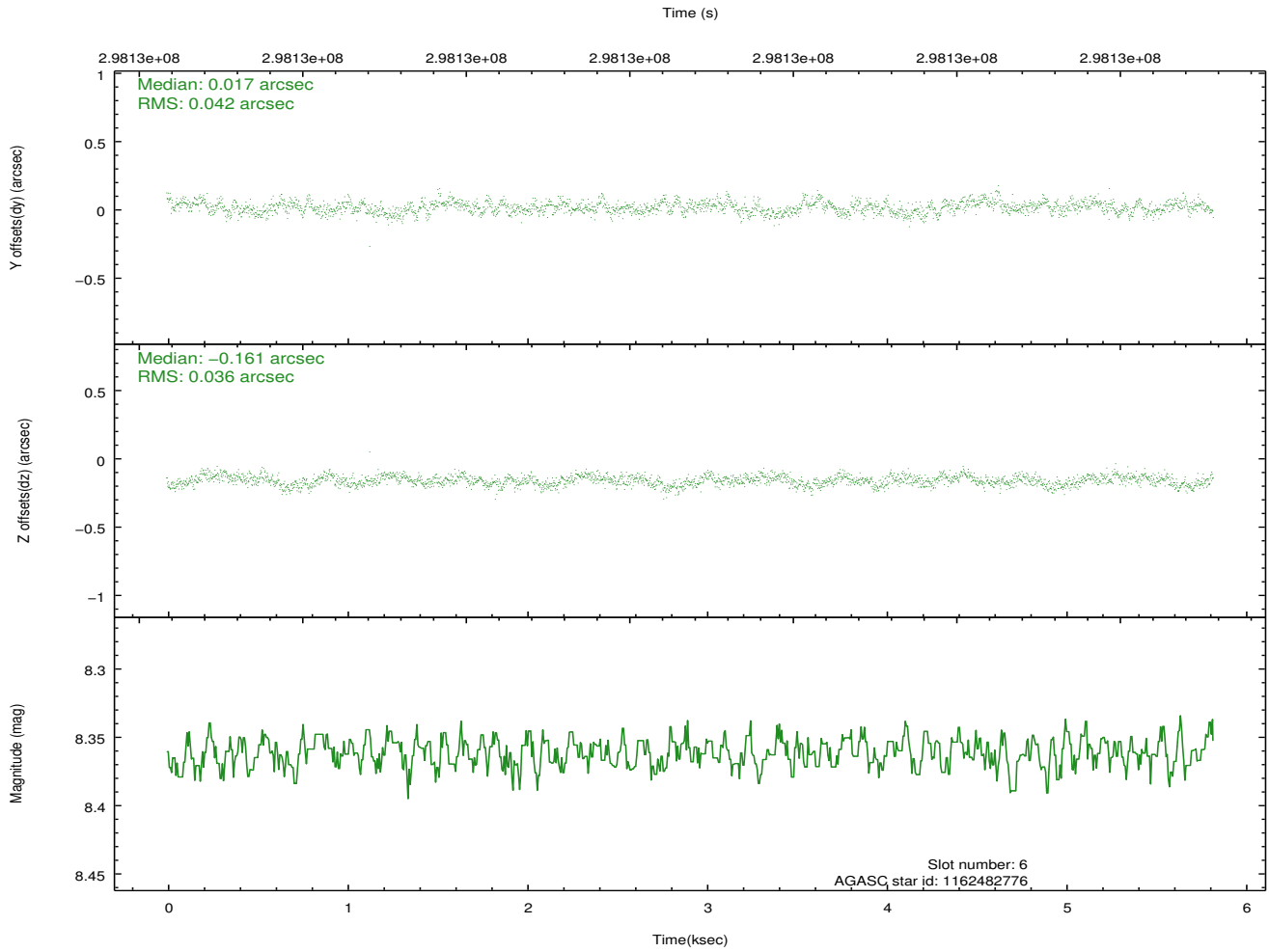
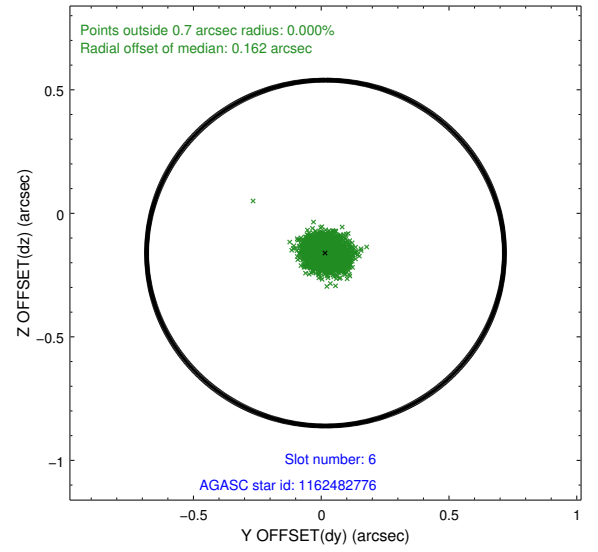
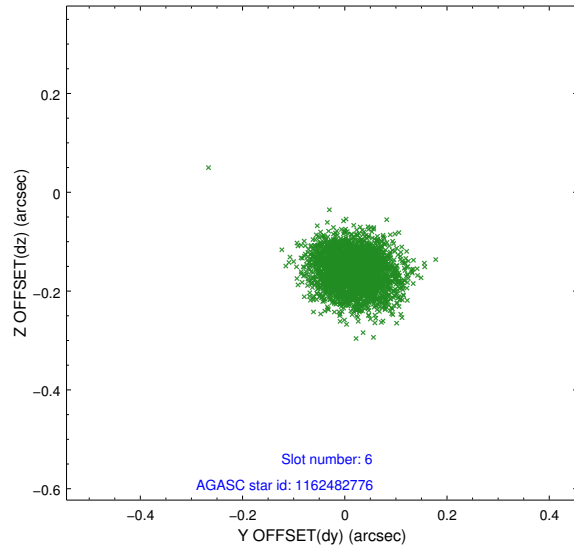
## 2.4.2 Slot 4



### 2.4.3 Slot 5

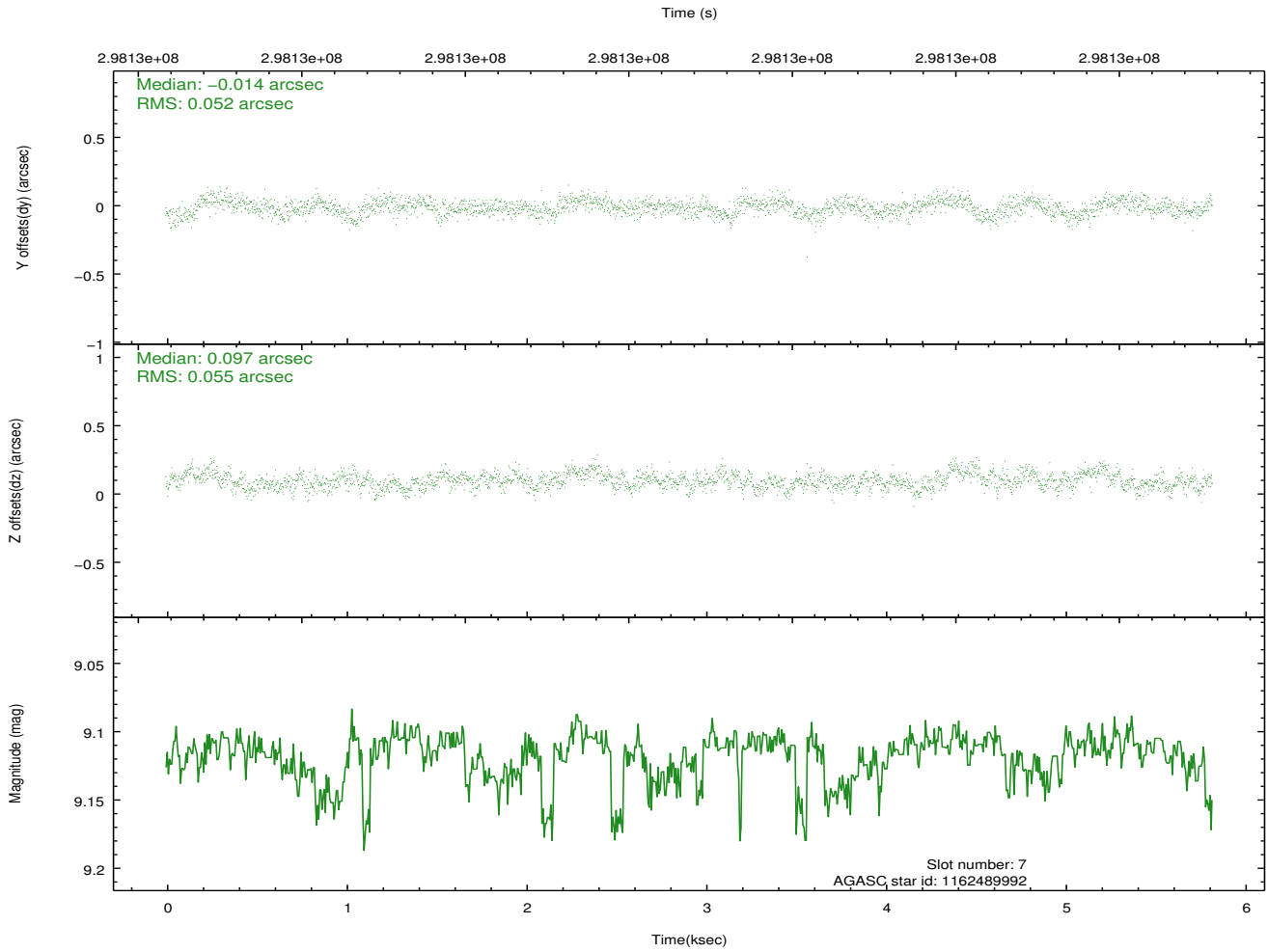
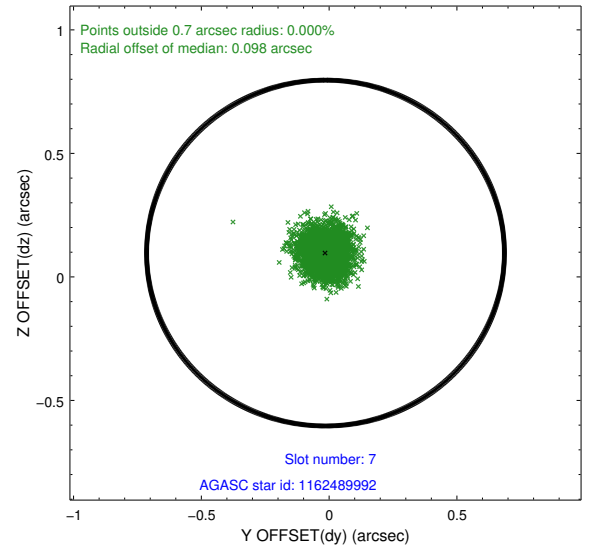
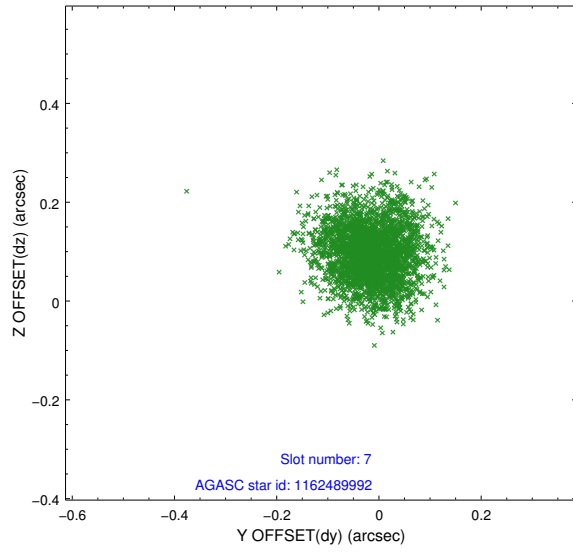


## 2.4.4 Slot 6



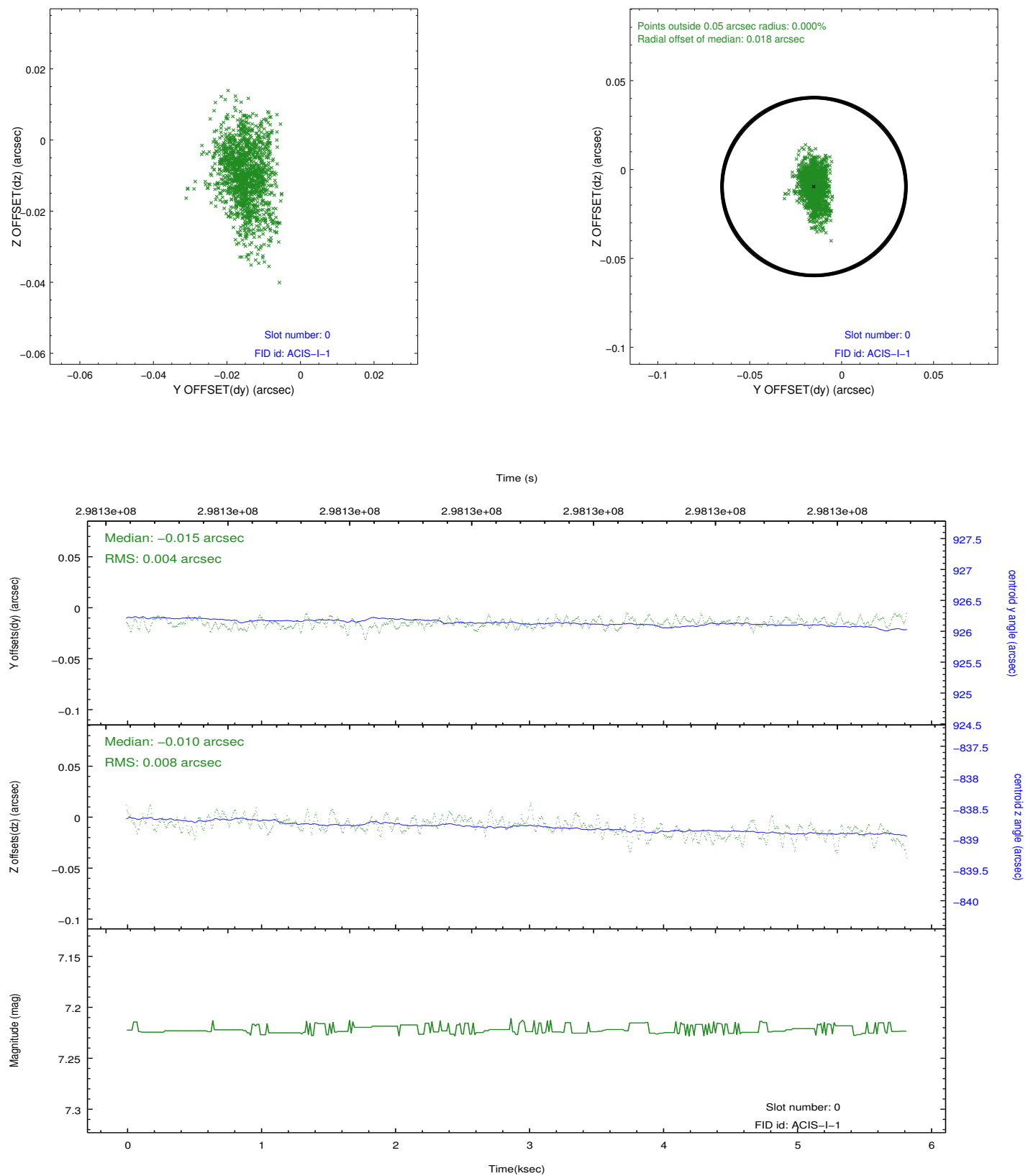


## 2.4.5 Slot 7

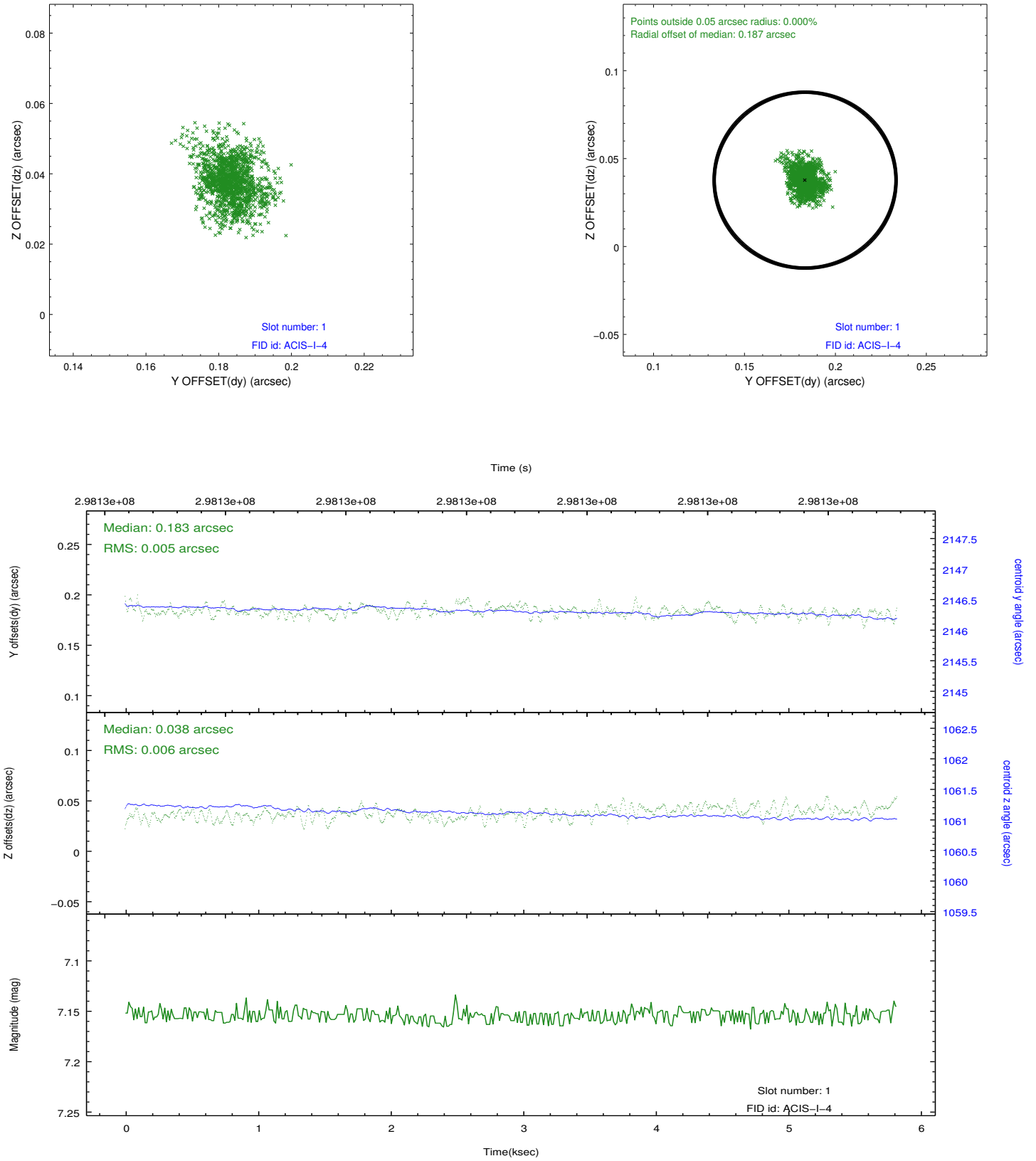


## 2.5 FID Slots

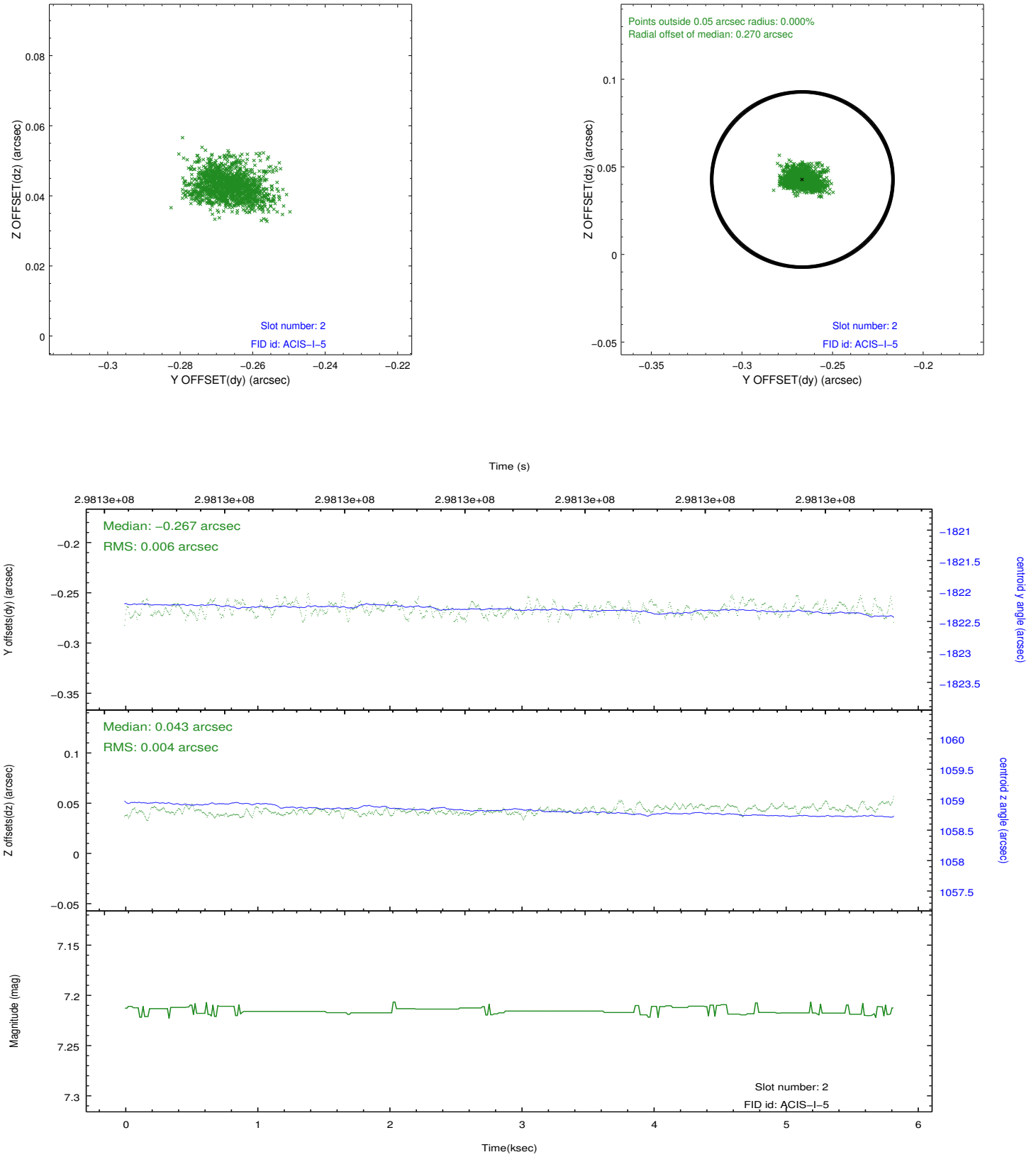
### 2.5.1 Slot 0



## 2.5.2 Slot 1



### 2.5.3 Slot 2



## A Summary

### A.1 Status

V&V Scientist	Jen Lauer
V&V Date (YYYY-MM-DD)	2012.04.26
V&V Edition	1
V&V Disposition and Status	OK
V&V Charge Time	5.05610003

### A.2 Comments