

V&V Reference Report

L2 ASCDS Version : 8.4.4

Observation 7604 - L2 Version 2
Chandra X-Ray Center

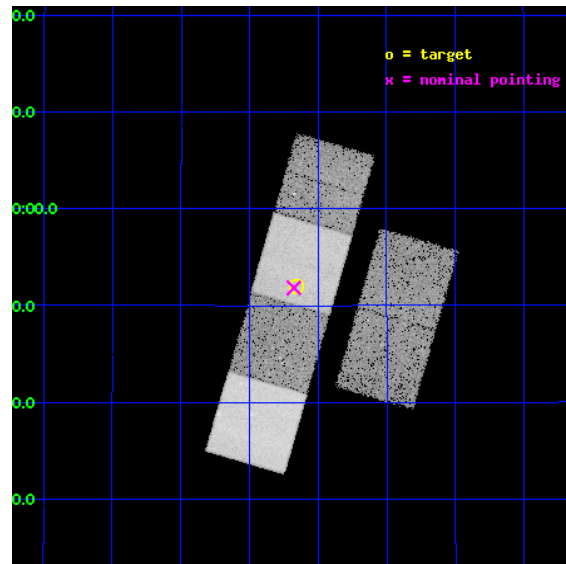
L2 Processing Date : May 7 2012

Contents

1	Front	2
2	OBI	3
2.1	OBI	3
2.1.1	Images	3
2.1.2	Bias	3
2.1.3	Parameters	4
2.1.4	Events	4
2.2	Compared Parameters	5
2.3	Aspect	6
2.4	Star Slots	9
2.4.1	Slot 3	9
2.4.2	Slot 4	10
2.4.3	Slot 5	11
2.4.4	Slot 6	12
2.4.5	Slot 7	13
2.5	FID Slots	14
2.5.1	Slot 0	14
2.5.2	Slot 1	15
2.5.3	Slot 2	16
A	Summary	17
A.1	Status	17
A.2	Comments	17

1 Front

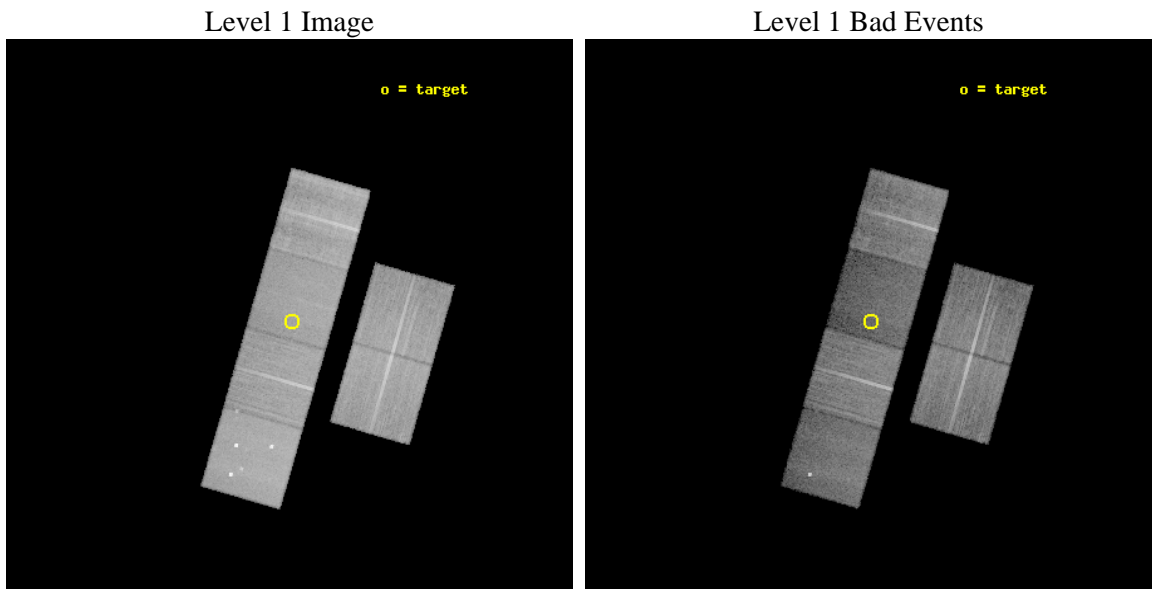
seq_num	500734	Sequence number
obs_id	7604	Observation id
title	CHANDRA OBSERVATIONS OF YOUNG ENERGETIC SUPERNOVAE	Proposal title
observer	Prof. David Pooley	Principal investigator
object	SN 2006aj	Source name
dtcycle	0	
cycle	P	events from which exps? Prim/Second/Both
ra_targ	50.415417	Observer's specified target RA [deg]
dec_targ	16.867167	Observer's specified target Dec [deg]
ra_nom	50.41915675136	Nominal RA [deg]
dec_nom	16.863935433919	Nominal Dec [deg]
roll_nom	286.08099570963	Nominal Roll [deg]
revision	2	Processing version of data
ontime	19340.79992801	Sum of GTIs [s]
livetime	19095.895073689	Livetime [s]
ontime2	19337.558997214	Sum of GTIs [s]
ontime3	19340.79992801	Sum of GTIs [s]
ontime5	19340.79992801	Sum of GTIs [s]
ontime6	19340.79992801	Sum of GTIs [s]
ontime7	19340.79992801	Sum of GTIs [s]
ontime8	19331.076946735	Sum of GTIs [s]
l2events	208302	Number of level 2 events



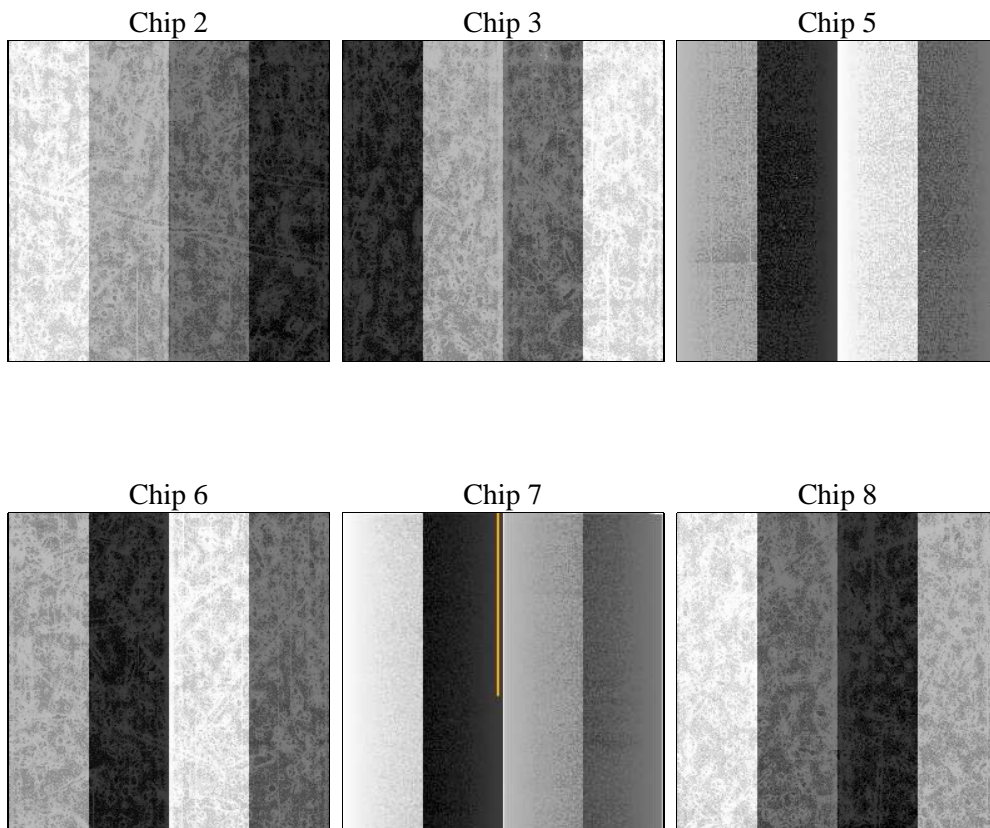
2 OBI

2.1 OBI

2.1.1 Images



2.1.2 Bias



2.1.3 Parameters

obi_num	0	Obi number	sched_exp_time	19297.187000	[s] Scheduled observation exposure time
ascdsver	8.4.4	Processing system revision	ontime	19340.79992801	Sum of GTIs [s]
caldsver	4.4.9	 	ontime2	19337.558997214	Sum of GTIs [s]
date	2012-05-07T15:40:50	Date and time of file creation	ontime3	19340.79992801	Sum of GTIs [s]
revision	2	Processing version of data	ontime5	19340.79992801	Sum of GTIs [s]
			ontime6	19340.79992801	Sum of GTIs [s]
			ontime7	19340.79992801	Sum of GTIs [s]
			ontime8	19331.076946735	Sum of GTIs [s]
			l1events	962061	Number of level 1 events

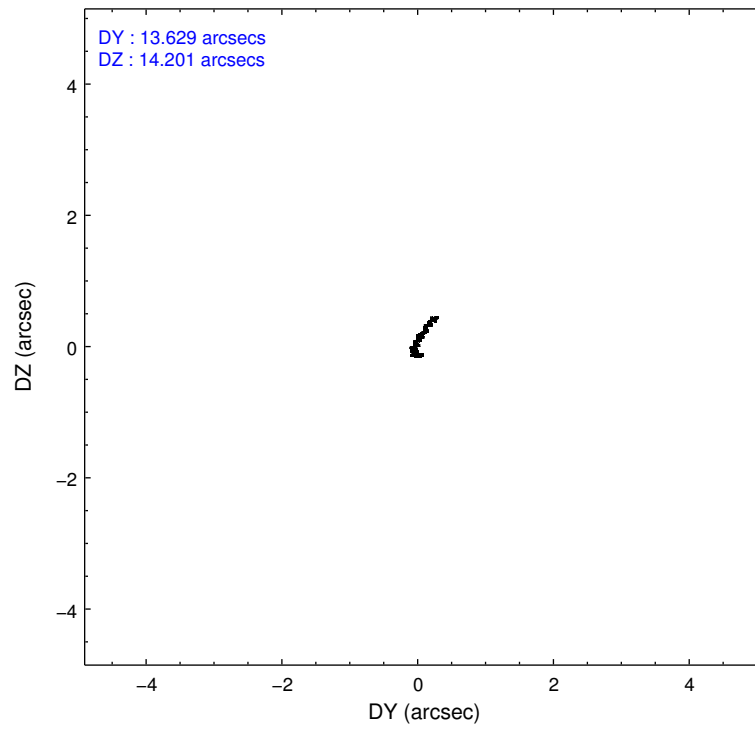
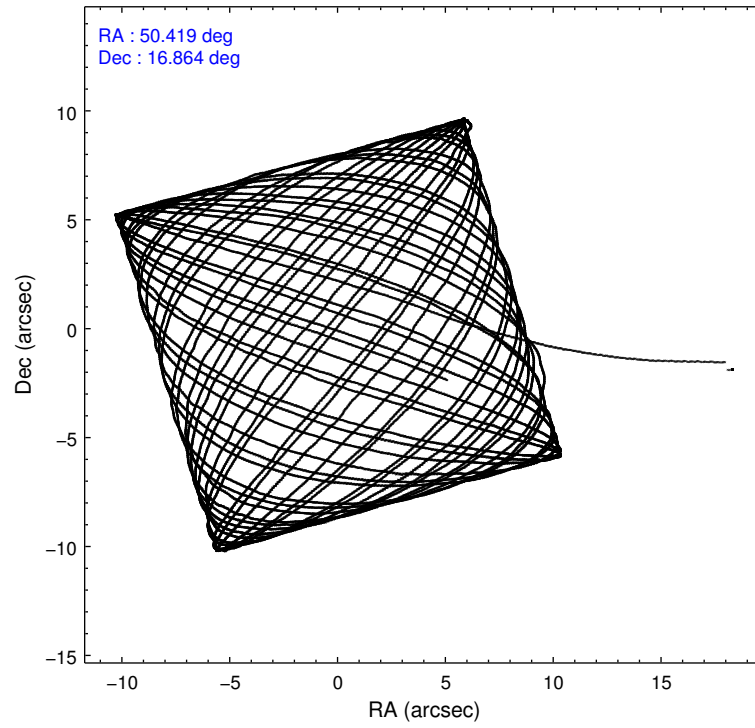
2.1.4 Events

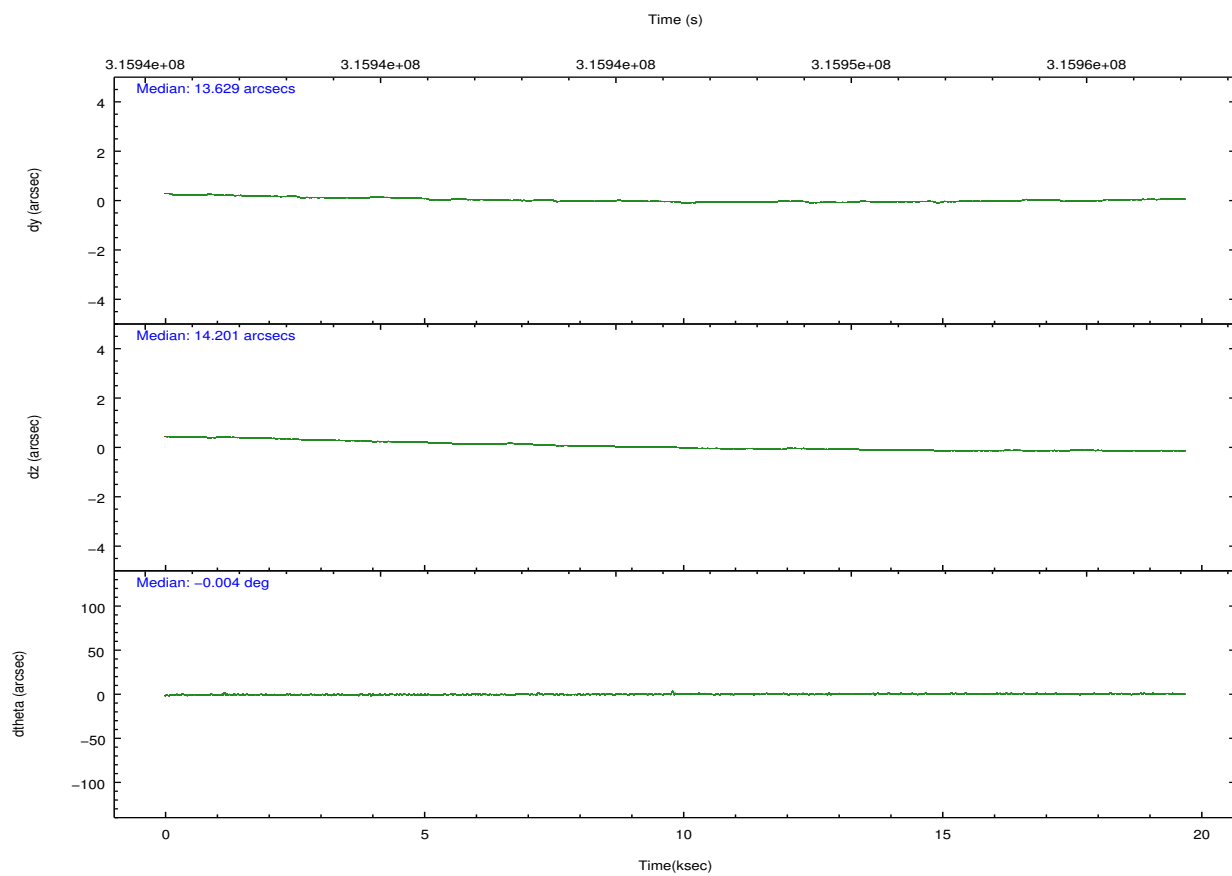
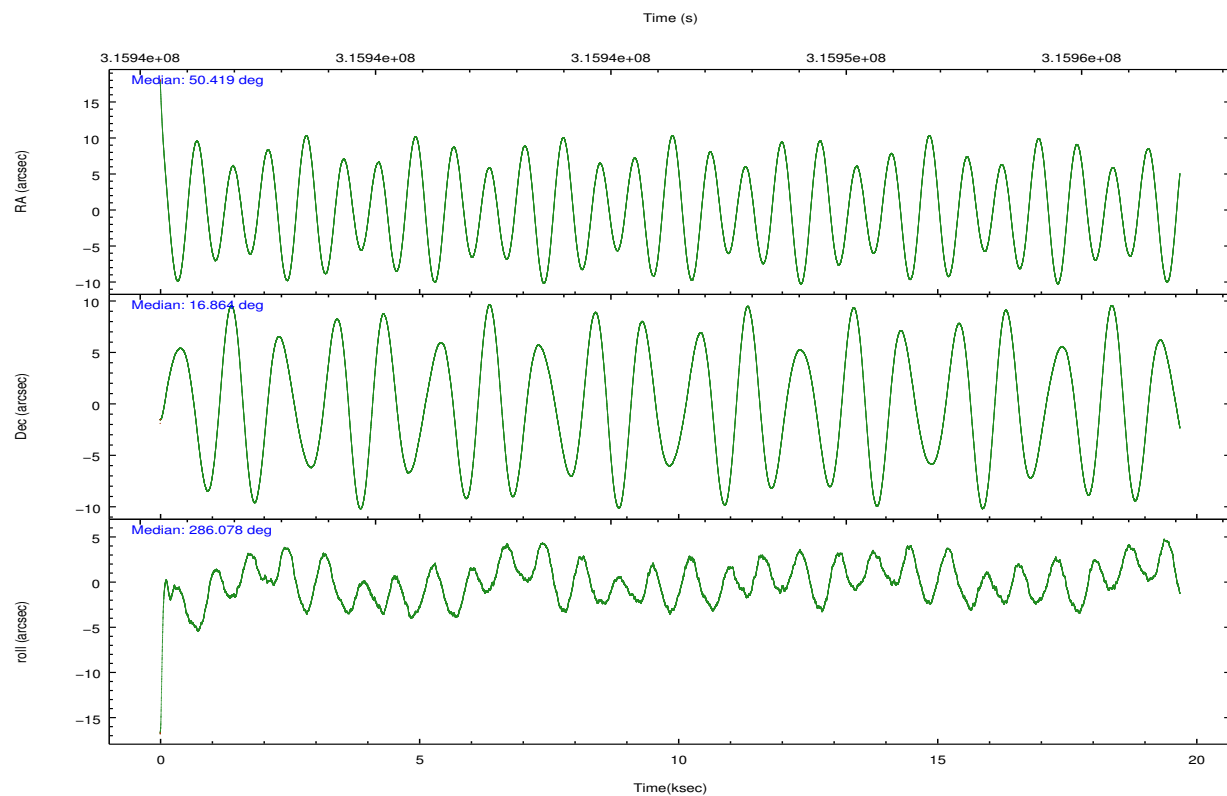
	ccd 2	ccd 3	ccd 5	ccd 6	ccd 7	ccd 8		ccd 2	ccd 3	ccd 5	ccd 6	ccd 7	ccd 8
level 1 events	157028	139167	194022	151321	139742	180781	grade 0 events	5144	4868	16225	5414	6779	12648
rejected events	142876	125896	88788	136341	70811	135392		3%	3%	8%	3%	4%	6%
rejected %	90%	90%	45%	90%	50%	74%	grade 1 events	90	87	416	80	229	134
								0%	0%	0%	0%	0%	0%
							grade 2 events	3613	2768	31233	3344	14591	10618
								2%	1%	16%	2%	10%	5%
							grade 3 events	1476	1496	4351	1601	6509	5077
								0%	1%	2%	1%	4%	2%
							grade 4 events	1531	1435	4127	1572	6353	4842
								0%	1%	2%	1%	4%	2%
							grade 5 events	4173	4850	15722	4956	14808	7532
								2%	3%	8%	3%	10%	4%
							grade 6 events	2392	2708	49320	3050	34710	12207
								1%	1%	25%	2%	24%	6%
							grade 7 events	138609	120955	72628	131304	55763	127723
								88%	86%	37%	86%	39%	70%

2.2 Compared Parameters

Parameter	Planned	Actual	Parameter	Planned	Actual
Instrument	ACIS	ACIS	Obspar format version number	7	7
Detector	ACIS-235678	ACIS-235678	Obspar file type	PREDICTED	ACTUAL
Grating	NONE	NONE	Obspar update status	NONE	UPDATED
Data mode	VFAINT	VFAINT	CCD I0 on	N	N
Observation mode	POINTING	POINTING	CCD I1 on	N	N
[deg] Pointing RA	50.398317	50.41915675136003	CCD I2 on	O2	Y
[deg] Pointing Dec	16.882599	16.86393543391874	CCD I3 on	Y	Y
[deg] Pointing Roll	285.930428	286.0809957096322	CCD S0 on	N	N
[mm] SIM focus pos	-0.684267	-0.6828225247311905	CCD S1 on	O1	Y
[mm] SIM defocus	0	0.001444936568705701	CCD S2 on	Y	Y
[mm] SIM translation stage pos	-190.132523	-190.1425803651734	CCD S3 on	Y	Y
[mm] SIM translation stage offset	0	0.01005778216563158	CCD S4 on	Y	Y
[s] Observation start time (MET)	315936792.184000	315935686.12239	CCD S5 on	N	N
Observation start date	2008-01-05T16:12:07	2008-01-05T15:54:46	Number of optional ACIS chips dropped	0	0
[s] Observation end time (MET)	315956089.184000	315956317.83589	On-chip summing requested	N	N
Observation end date	2008-01-05T21:33:44	2008-01-05T21:38:37	Subarray requested	NONE	NONE
Read mode	TIMED	TIMED	Alternating exposures requested	N	N
			[s] Primary exposure time	0.000000	3.2

2.3 Aspect



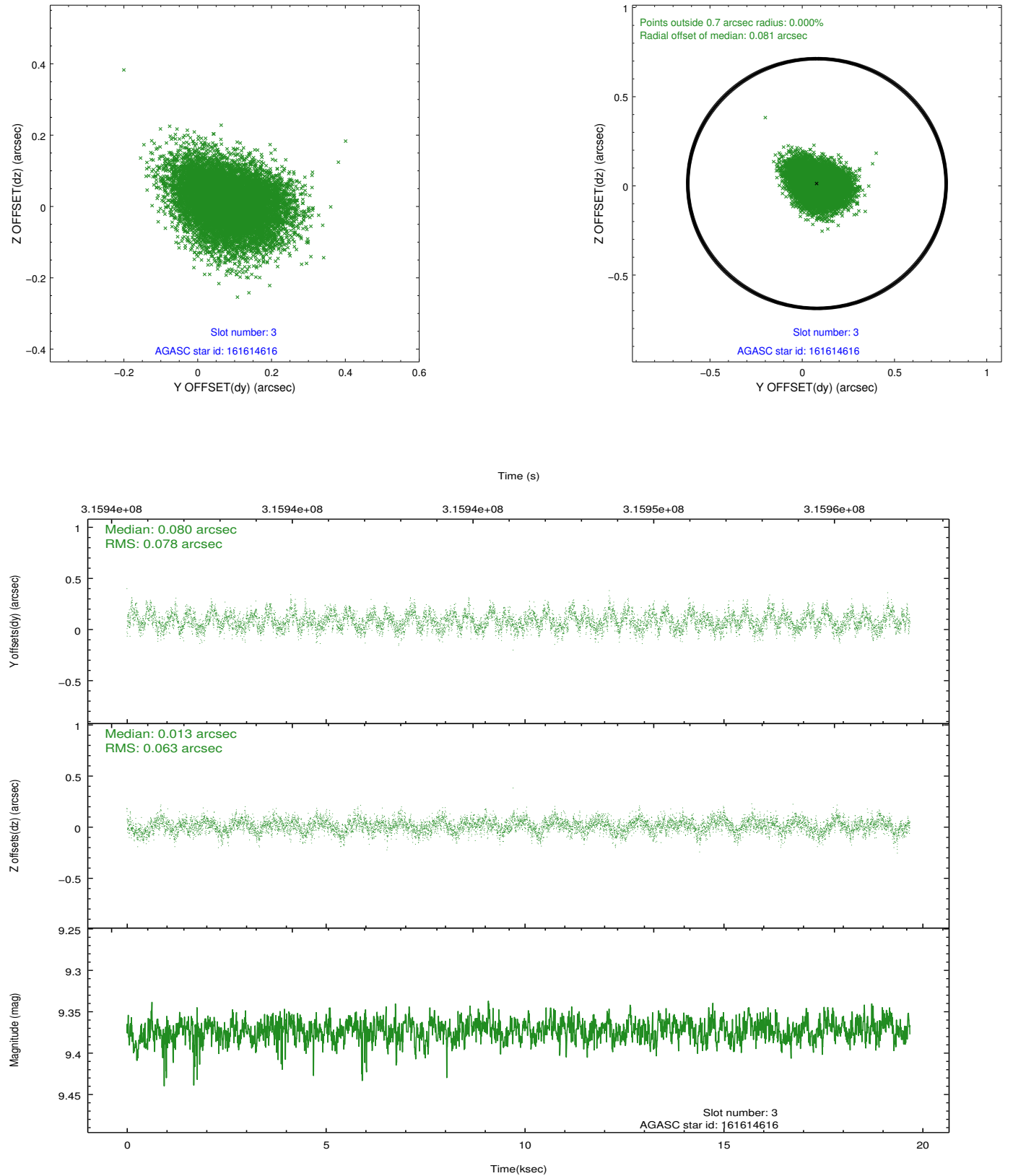


Slot Statistics

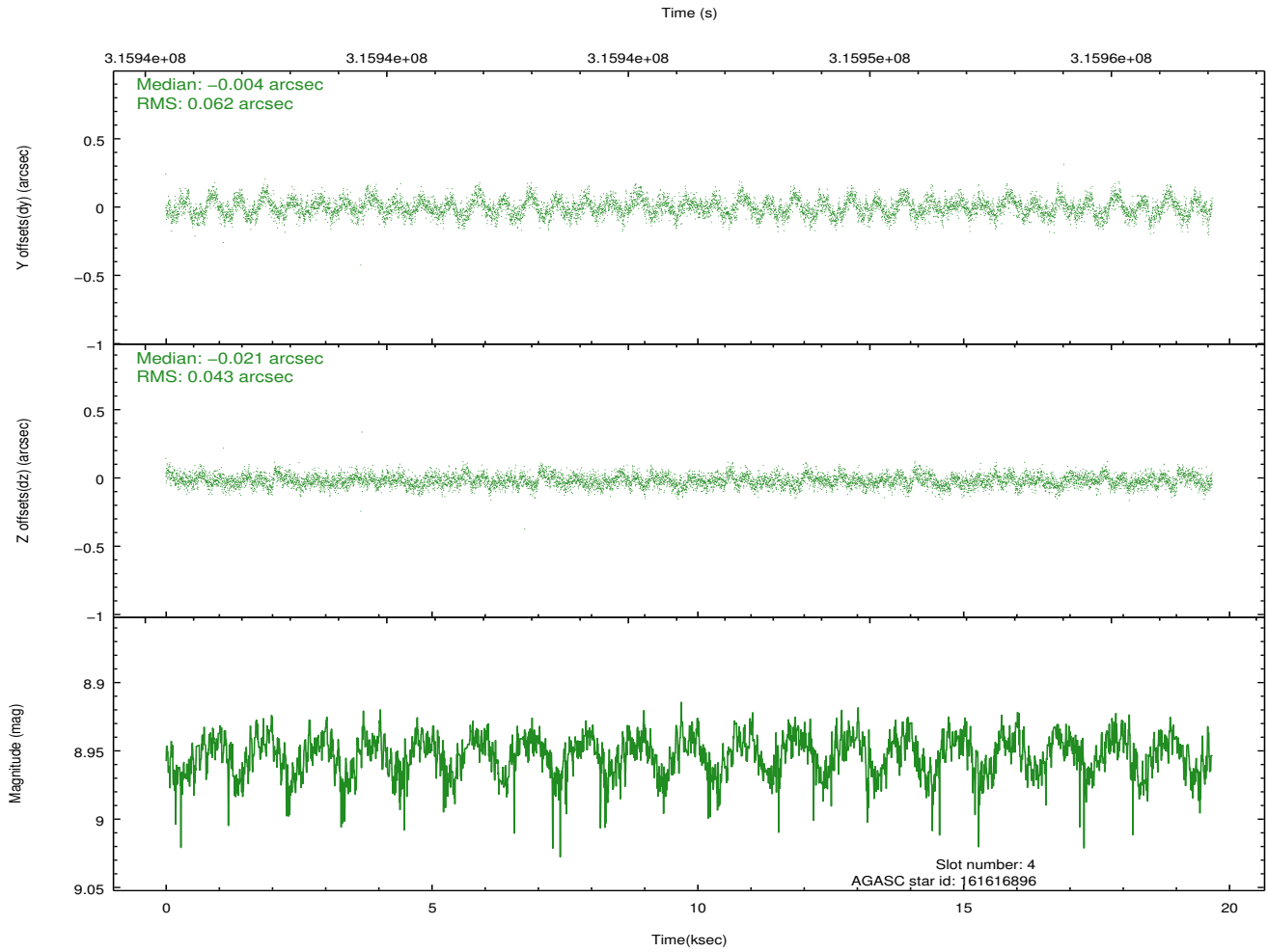
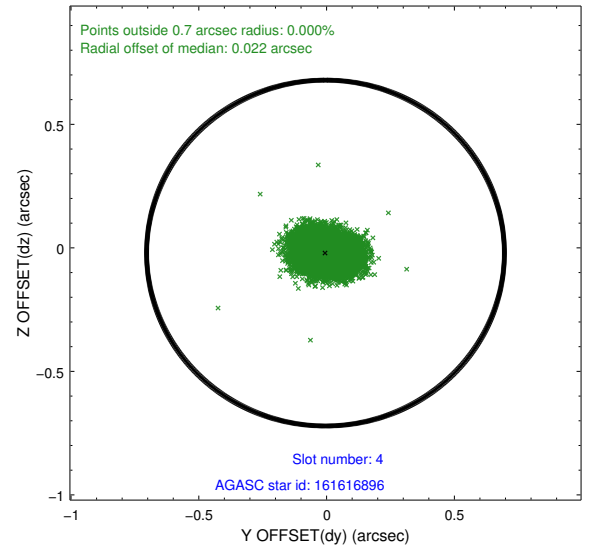
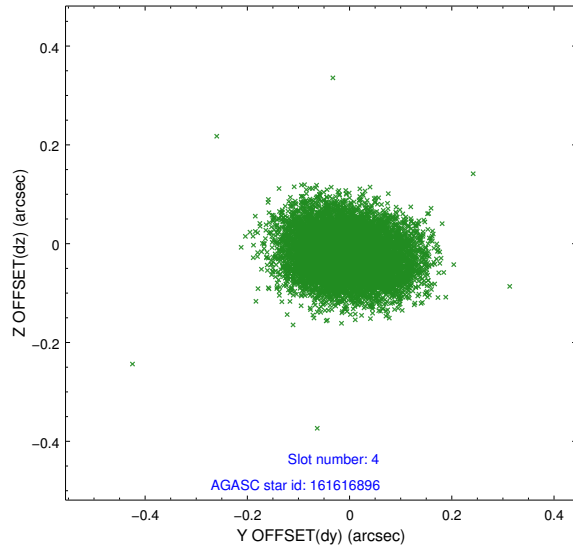
slot	status	id	mag	n_pts	med_dy	med_dz	dr1	dr2	ra	dec	mean_y	mean_z
0	FID	ACIS-S-2	7.10	4800	-0.052	-0.045	0.010	0.018	0.000000	0.000000	-766.63	-1735.61
1	FID	ACIS-S-4	7.19	4801	0.175	0.038	0.008	0.015	0.000000	0.000000	2146.77	172.77
2	FID	ACIS-S-5	7.22	4799	-0.153	0.016	0.009	0.015	0.000000	0.000000	-1819.34	166.61
3	GUIDE	161614616	9.37	9596	0.080	0.013	0.108	0.173	50.135712	16.332986	1653.78	-1415.08
4	GUIDE	161616896	8.95	9592	-0.004	-0.021	0.080	0.131	50.723185	16.359747	2117.97	562.52
5	GUIDE	162136352	9.21	9586	-0.169	0.038	0.104	0.167	50.340715	17.255337	-1344.03	178.09
6	GUIDE	162138640	8.92	9593	0.007	-0.047	0.075	0.121	50.402579	16.915943	-110.98	47.17
7	GUIDE	161612808	7.62	9598	0.081	0.013	0.053	0.086	50.828870	16.565729	1503.72	1116.22

2.4 Star Slots

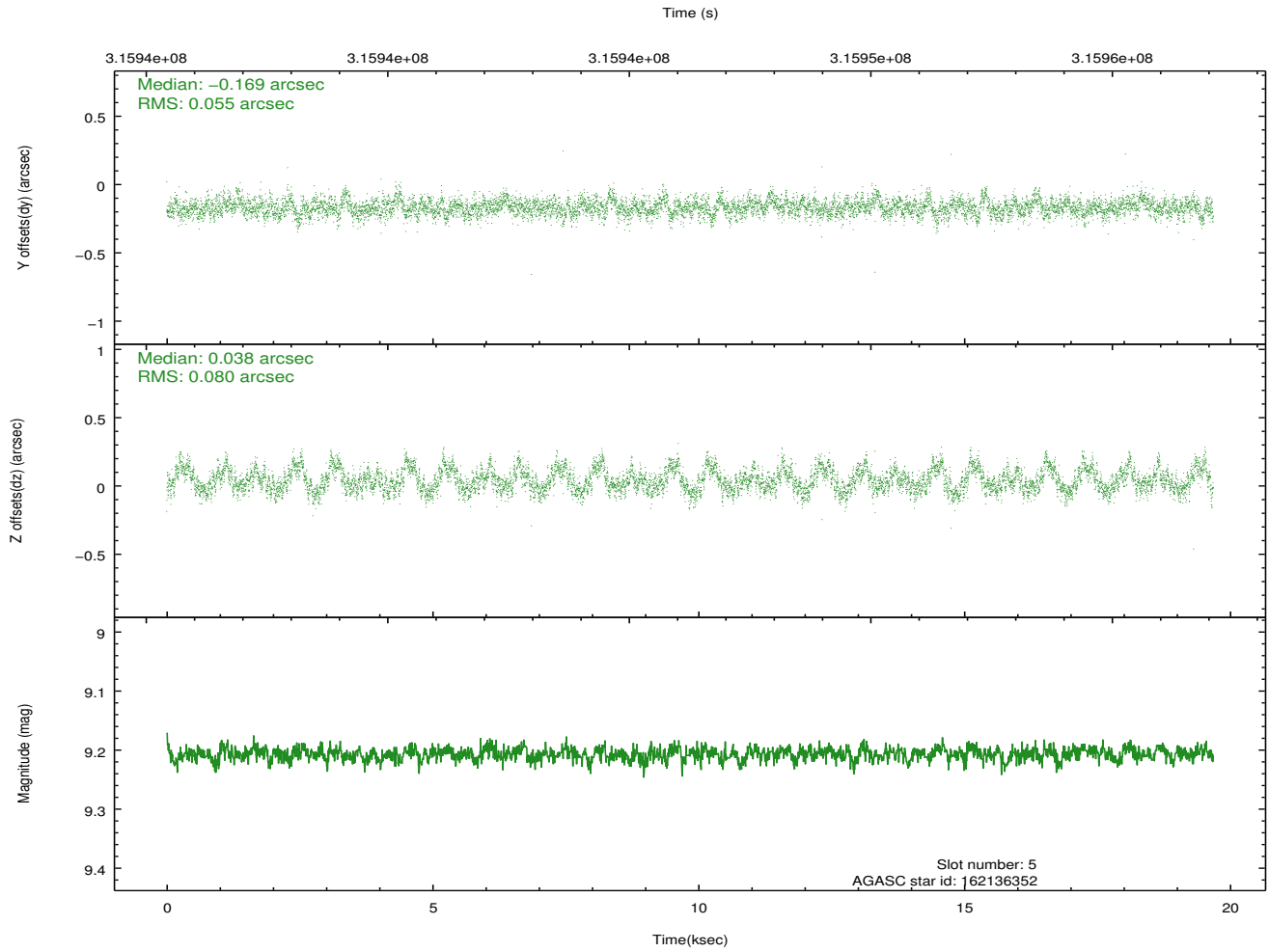
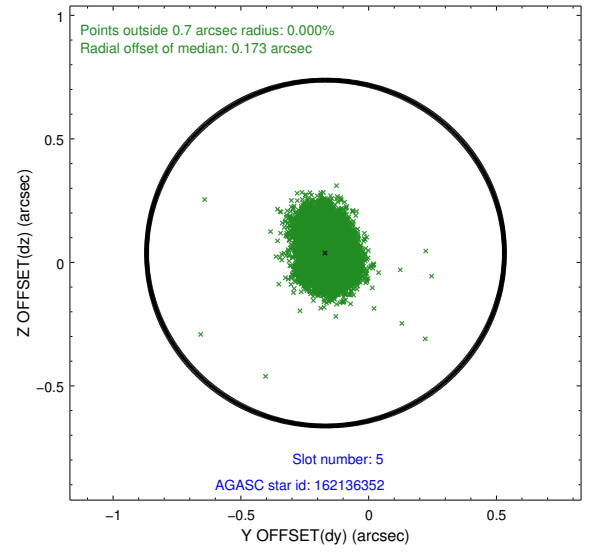
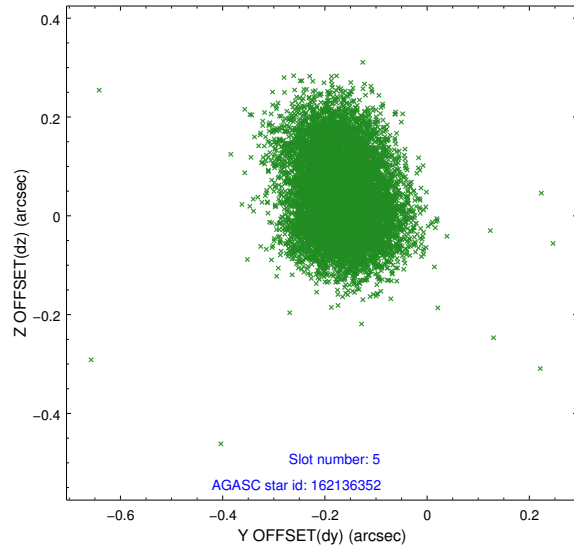
2.4.1 Slot 3



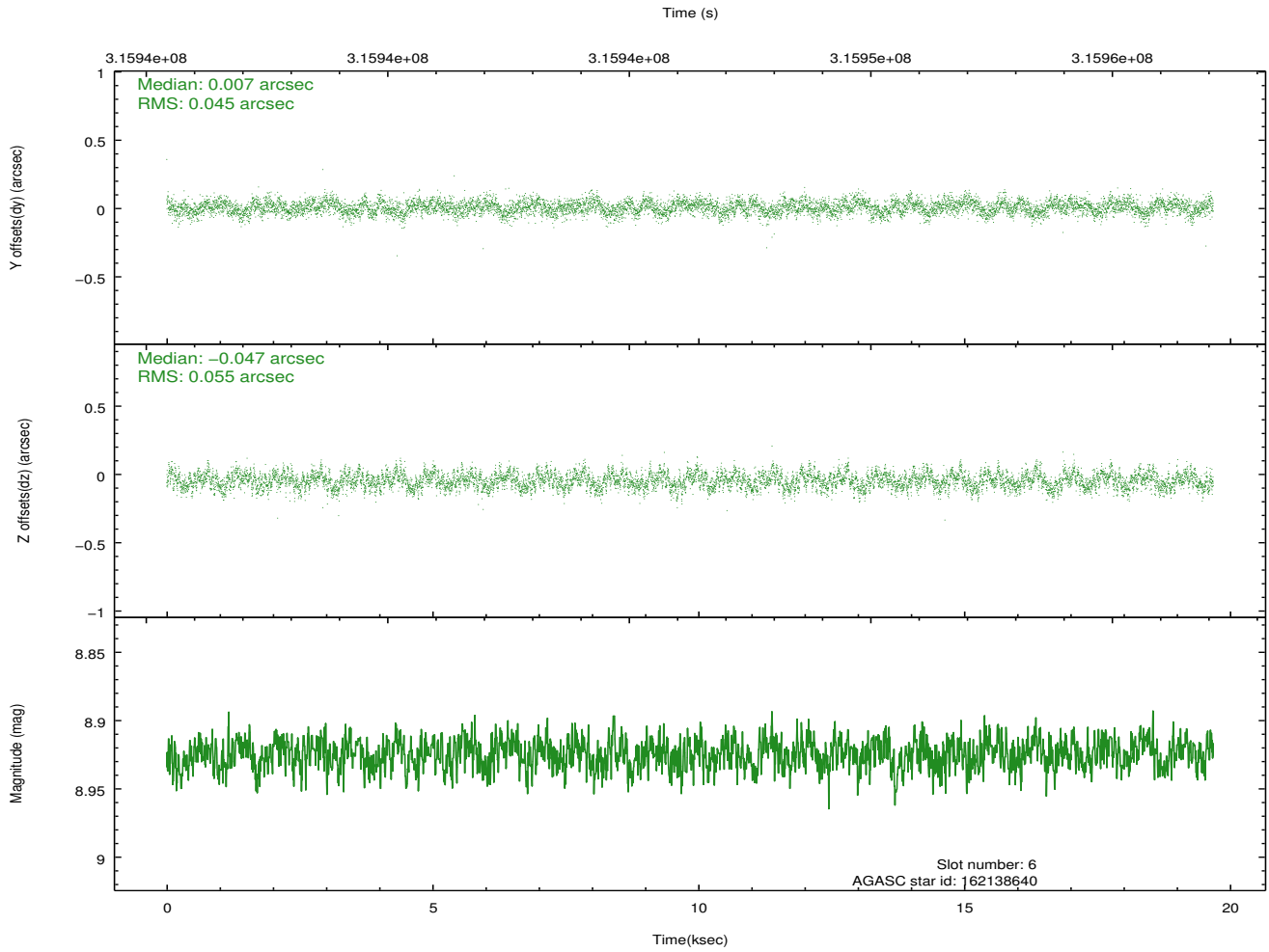
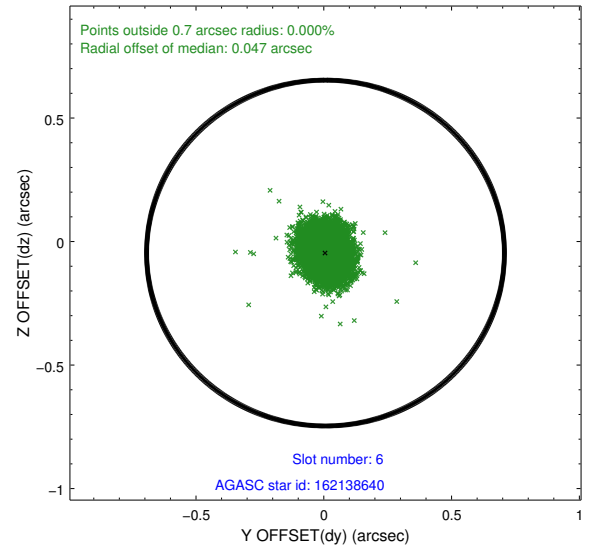
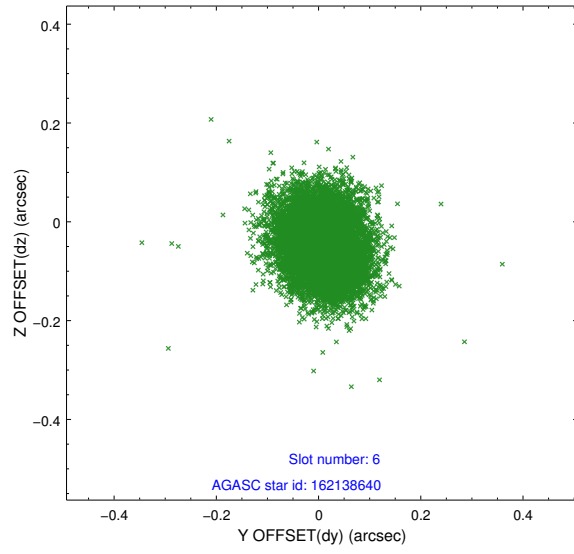
2.4.2 Slot 4



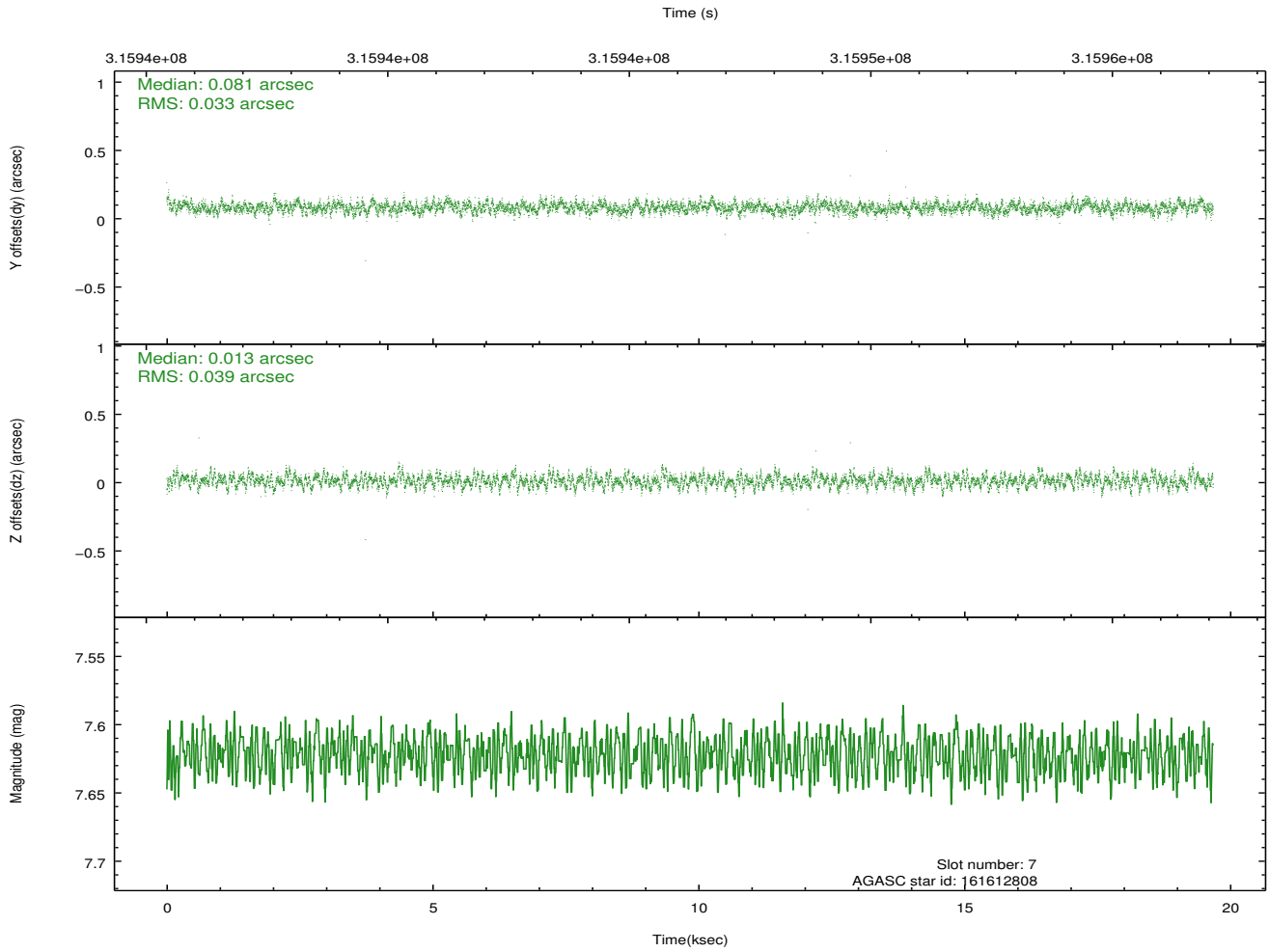
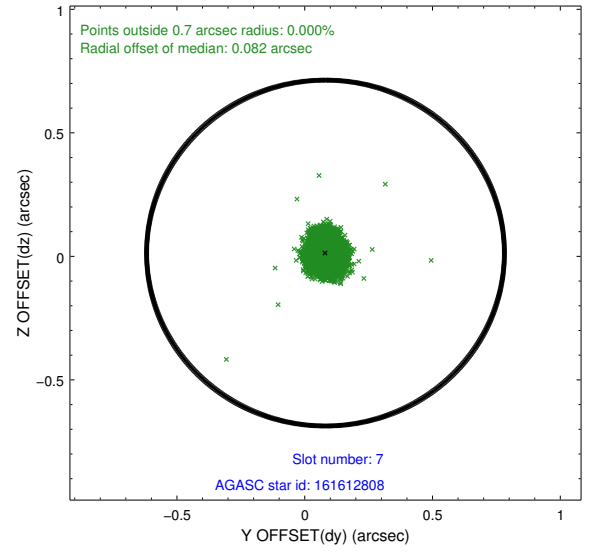
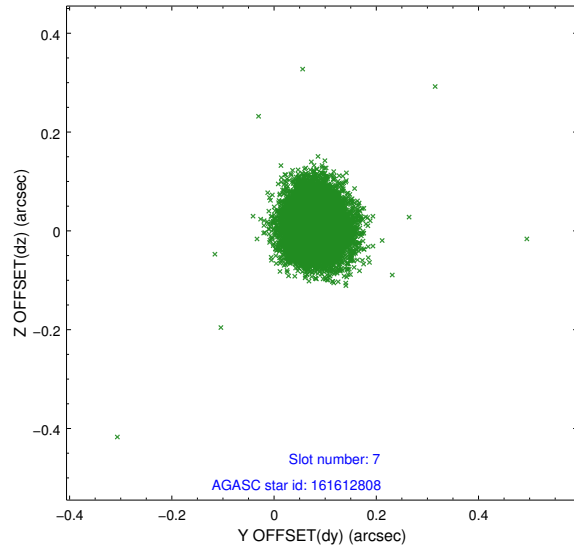
2.4.3 Slot 5



2.4.4 Slot 6

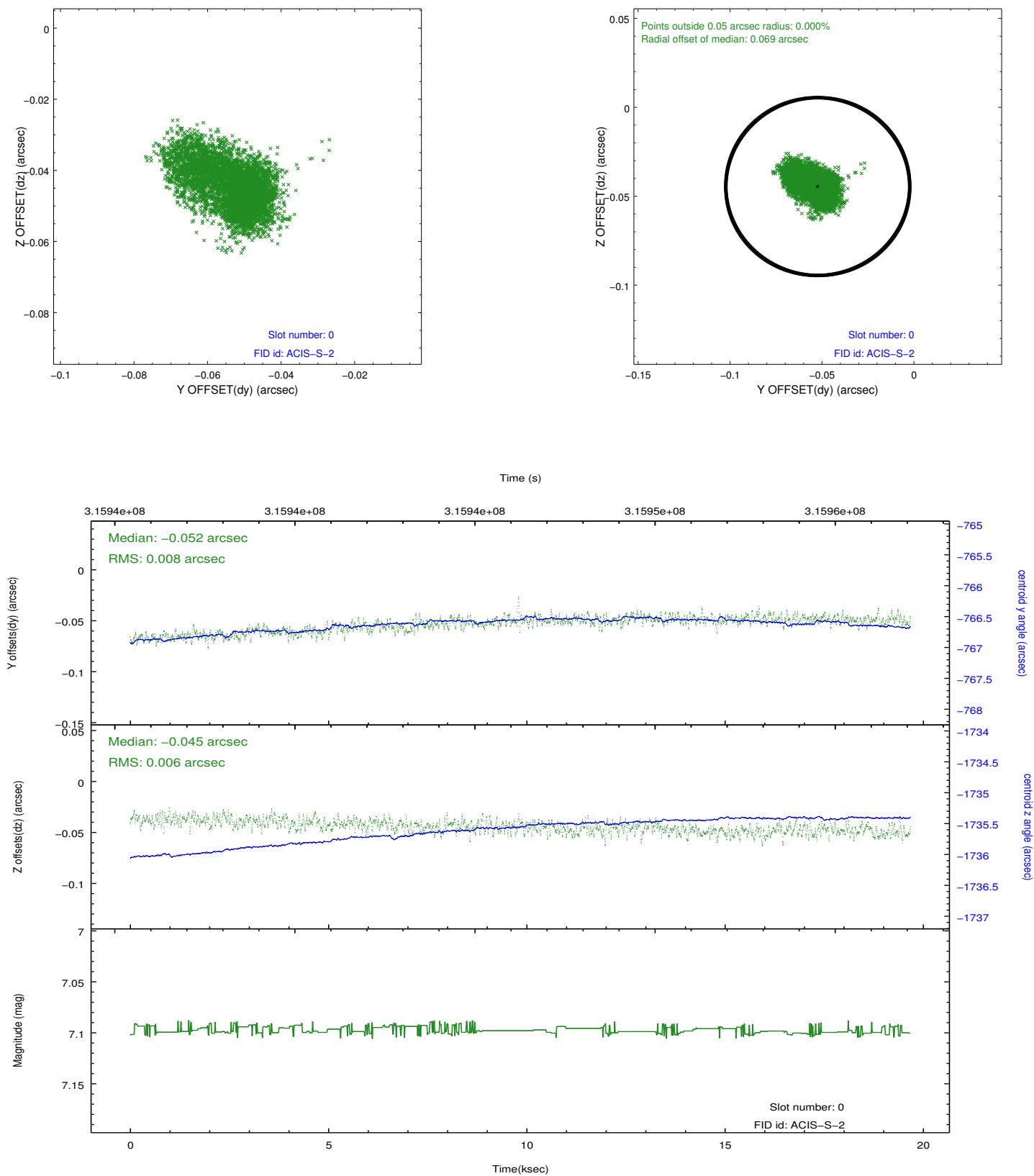


2.4.5 Slot 7

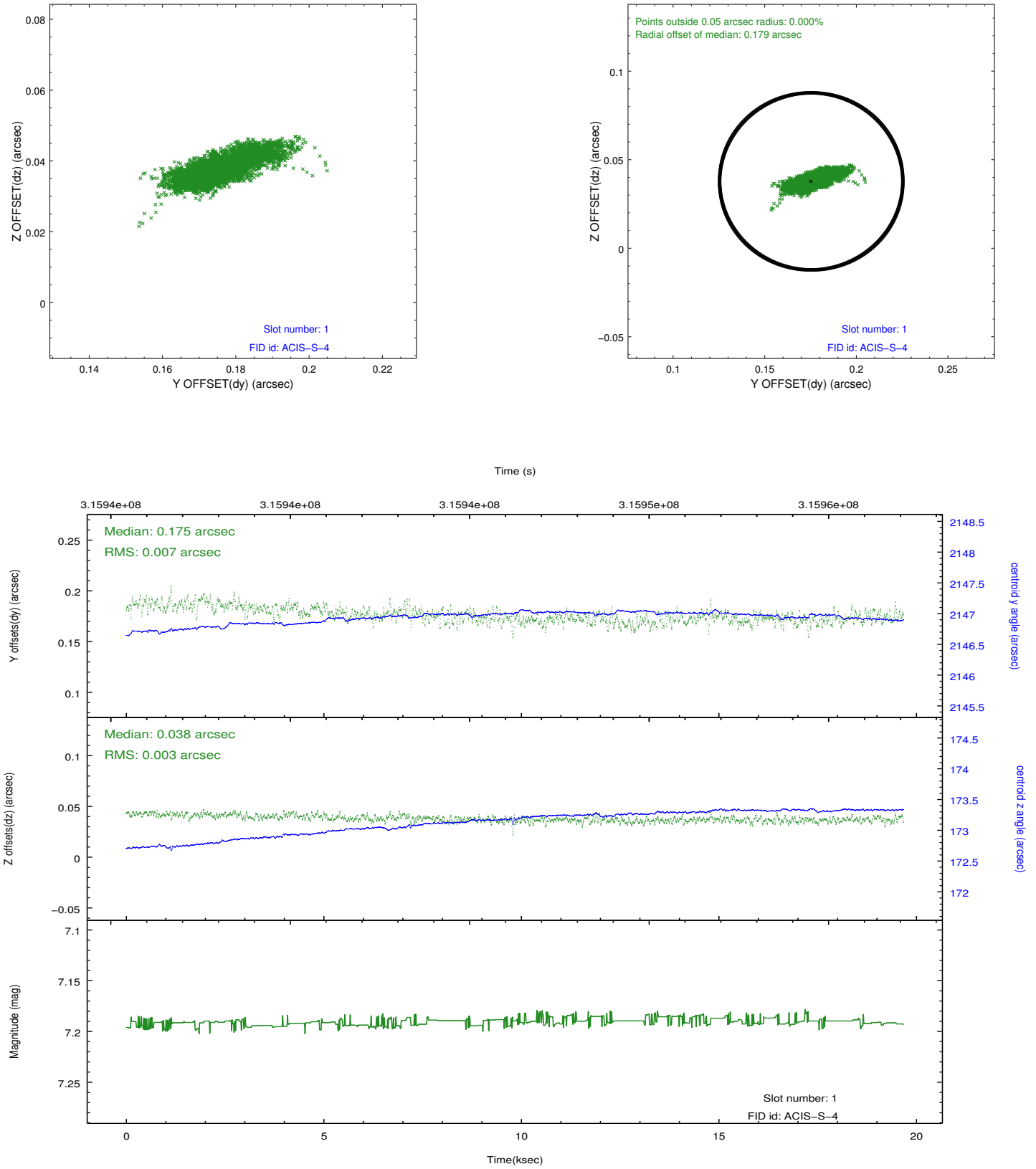


2.5 FID Slots

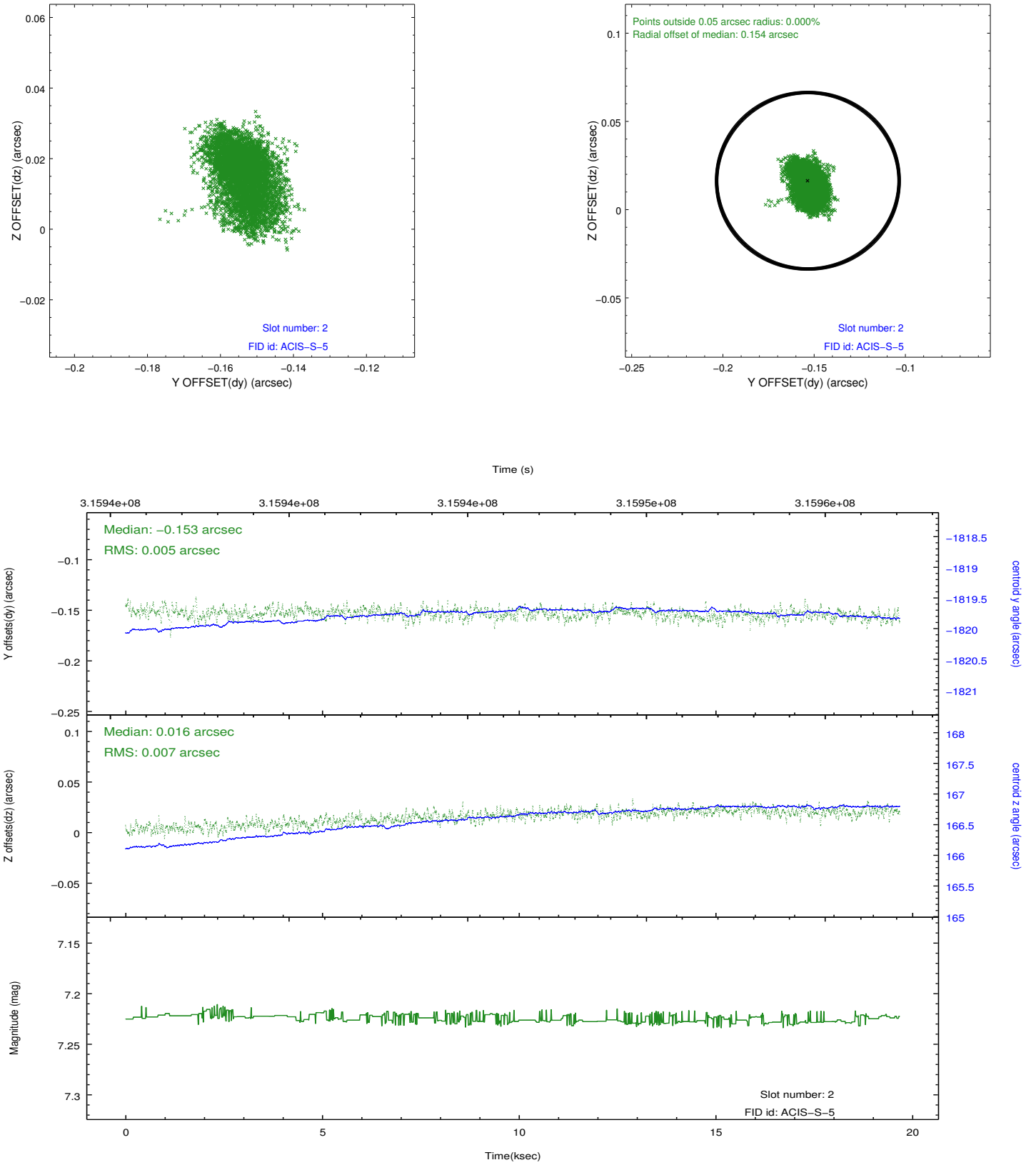
2.5.1 Slot 0



2.5.2 Slot 1



2.5.3 Slot 2



A Summary

A.1 Status

V&V Scientist	Beth Sundheim
V&V Date (YYYY-MM-DD)	2012.05.09
V&V Edition	1
V&V Disposition and Status	OK
V&V Charge Time	19.3407999

A.2 Comments