

V&V Reference Report

L2 ASCDS Version : 8.4.3.1

Observation 7478 - L2 Version 2
Chandra X-Ray Center

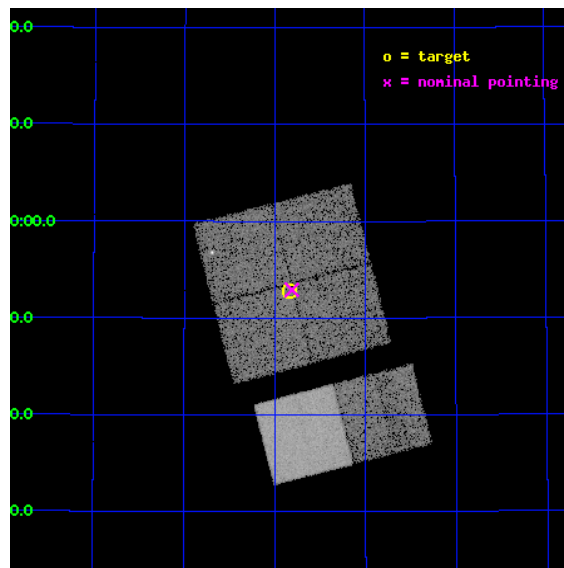
L2 Processing Date : Apr 14 2012

Contents

1	Front	2
2	OBI	3
2.1	OBI	3
2.1.1	Images	3
2.1.2	Bias	3
2.1.3	Parameters	4
2.1.4	Events	4
2.2	Compared Parameters	5
2.3	Aspect	6
2.4	Star Slots	9
2.4.1	Slot 3	9
2.4.2	Slot 4	10
2.4.3	Slot 5	11
2.4.4	Slot 6	12
2.4.5	Slot 7	13
2.5	FID Slots	14
2.5.1	Slot 0	14
2.5.2	Slot 1	15
2.5.3	Slot 2	16
A	Summary	17
A.1	Status	17
A.2	Comments	17

1 Front

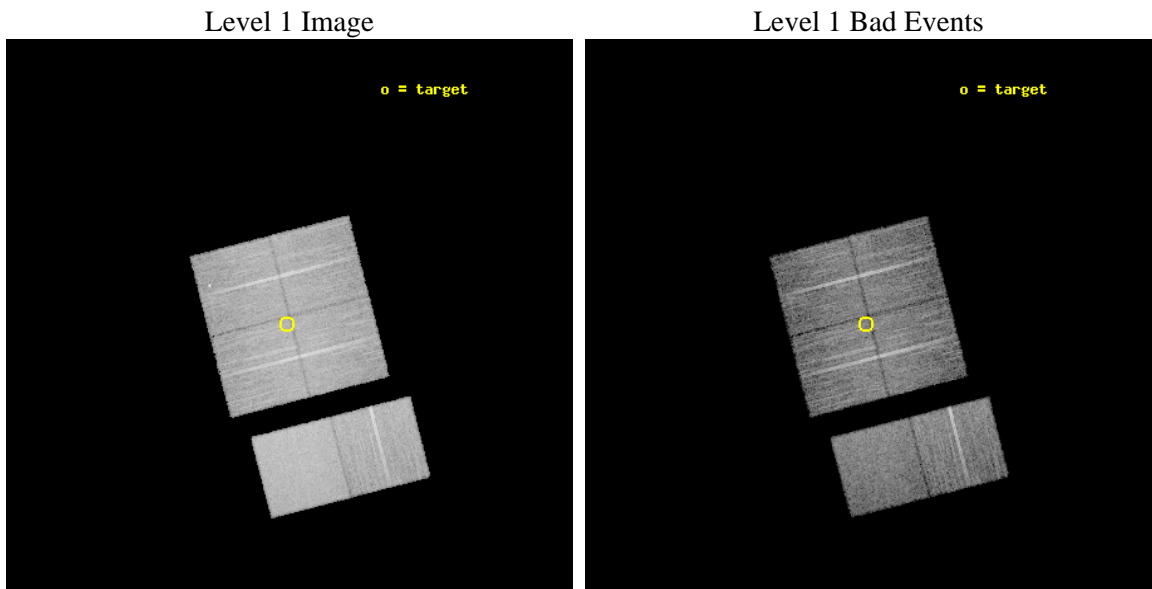
seq_num	400588	Sequence number
obs_id	7478	Observation id
title	A Pilot Study of X-ray Emission from Candidate Massive Star Clusters	
observer	Professor Gordon Garmire	Principal investigator
object	BDSB2003+66	Source name
dtcycle	0	
cycle	P	events from which exps? Prim/Second/Both
ra_targ	69.208333	Observer's specified target RA [deg]
dec_targ	50.879444	Observer's specified target Dec [deg]
ra_nom	69.202484346339	Nominal RA [deg]
dec_nom	50.882194407346	Nominal Dec [deg]
roll_nom	165.57940228378	Nominal Roll [deg]
revision	2	Processing version of data
ontime	10083.199962497	Sum of GTIs [s]
livetime	9955.5204131975	Livetime [s]
ontime0	10083.199962497	Sum of GTIs [s]
ontime1	10083.199962497	Sum of GTIs [s]
ontime2	10083.199962497	Sum of GTIs [s]
ontime3	10083.199962497	Sum of GTIs [s]
ontime6	10083.199962497	Sum of GTIs [s]
ontime7	10083.199962497	Sum of GTIs [s]
l2events	99548	Number of level 2 events



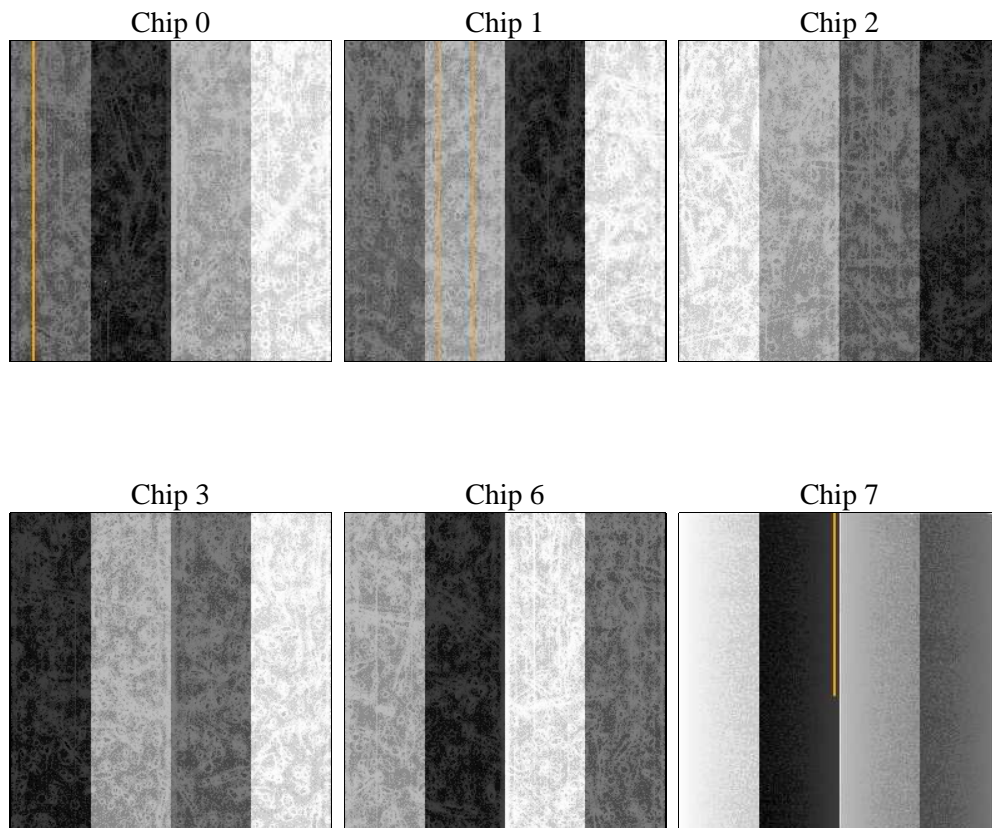
2 OBI

2.1 OBI

2.1.1 Images



2.1.2 Bias



2.1.3 Parameters

obi_num	0	Obi number	sched_exp_time	10000.000000	[s] Scheduled observation exposure time
ascdsver	8.4.3.1	Processing system revision	ontime	10083.199962497	Sum of GTIs [s]
caldsver	4.4.9	 	ontime0	10083.199962497	Sum of GTIs [s]
date	2012-04-14T04:26:44	Date and time of file creation	ontime1	10083.199962497	Sum of GTIs [s]
revision	2	Processing version of data	ontime2	10083.199962497	Sum of GTIs [s]
			ontime3	10083.199962497	Sum of GTIs [s]
			ontime6	10083.199962497	Sum of GTIs [s]
			ontime7	10083.199962497	Sum of GTIs [s]
			l1events	574606	Number of level 1 events

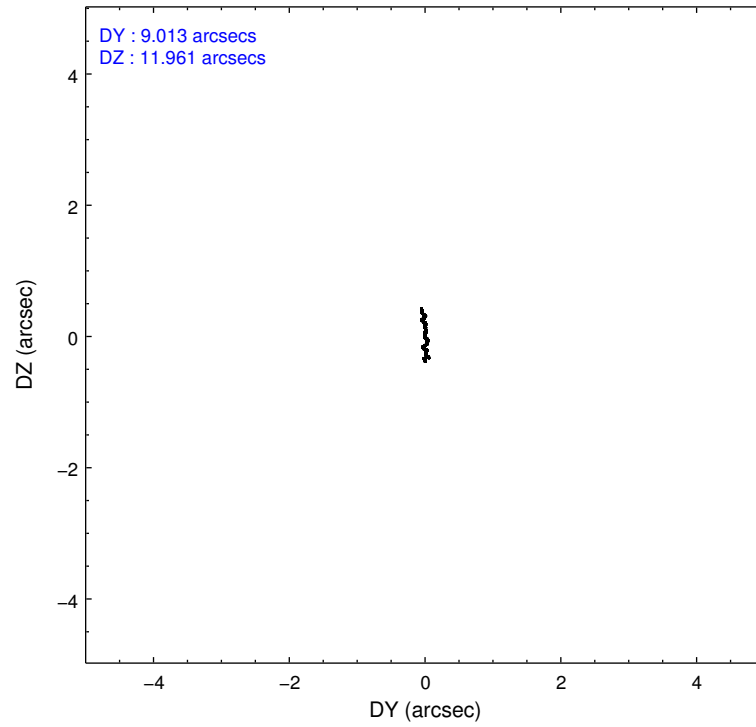
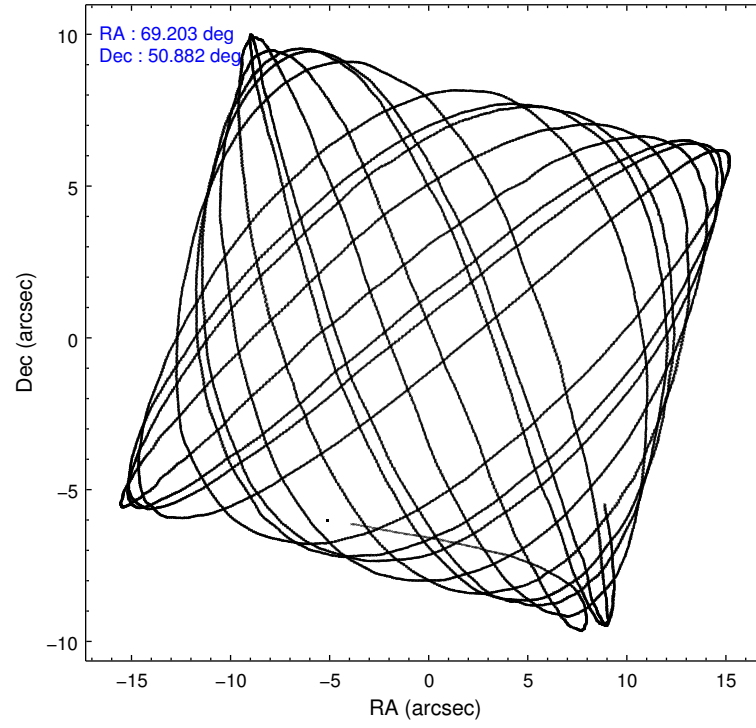
2.1.4 Events

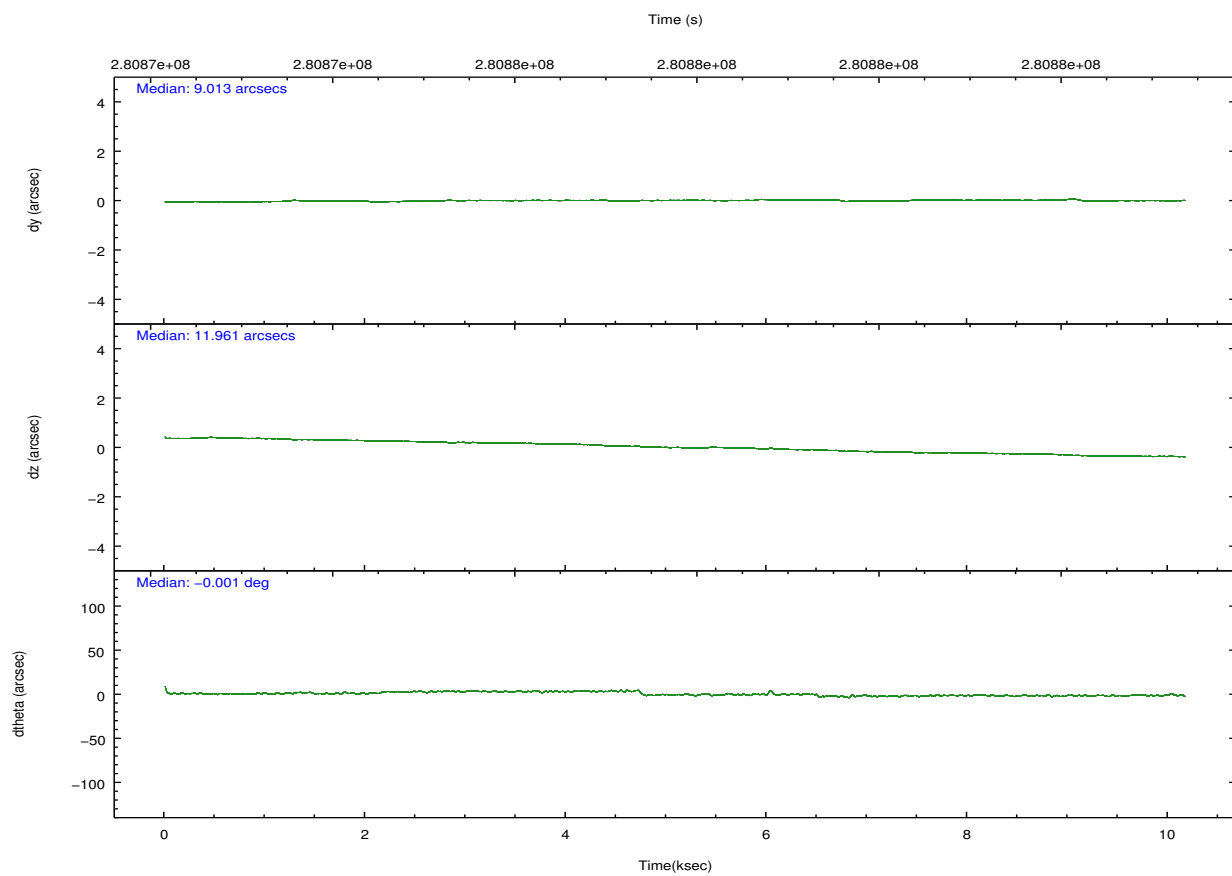
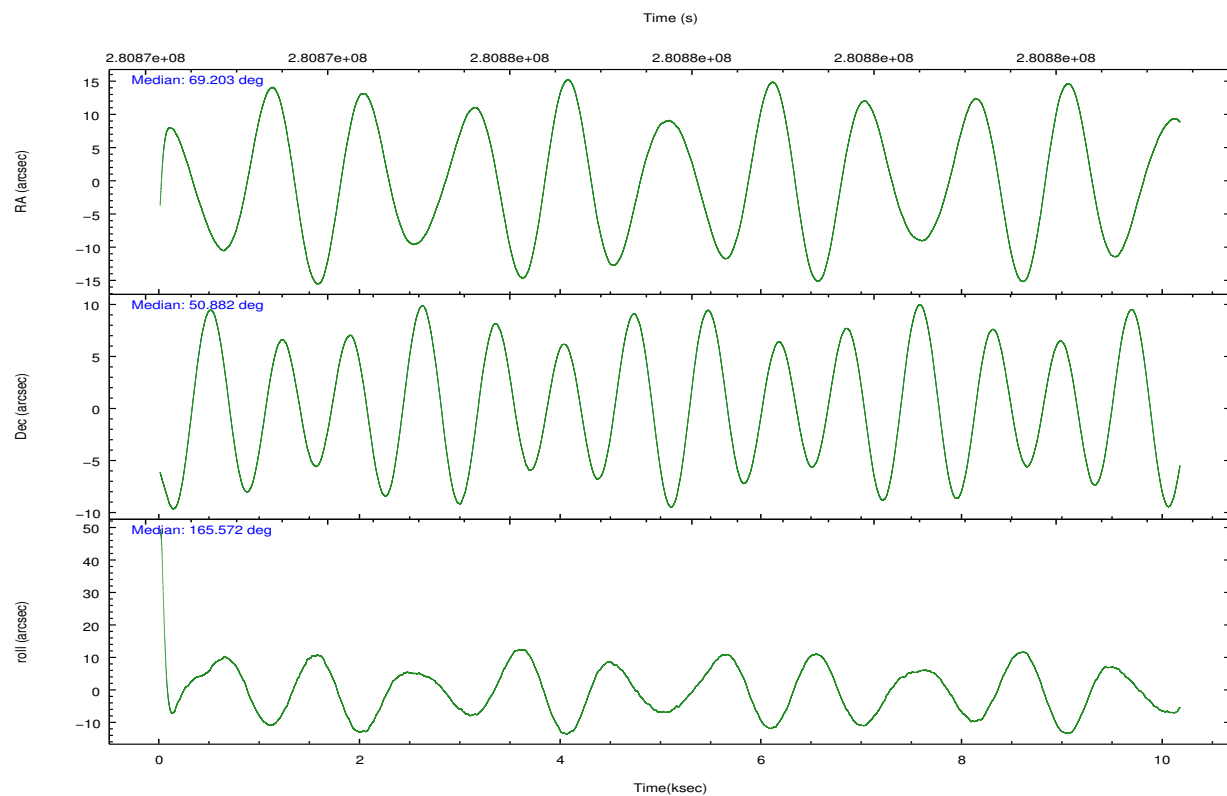
	ccd 0	ccd 1	ccd 2	ccd 3	ccd 6	ccd 7		ccd 0	ccd 1	ccd 2	ccd 3	ccd 6	ccd 7
level 1 events	84409	85122	91389	93022	95061	125603	grade 0 events	4629	4966	4897	4802	4275	4498
rejected events	73557	72910	80418	82071	83985	73392		5%	5%	5%	5%	4%	3%
rejected %	87%	85%	87%	88%	88%	58%	grade 1 events	42	52	60	55	51	104
								0%	0%	0%	0%	0%	0%
							grade 2 events	2396	2648	2268	2135	2437	10470
								2%	3%	2%	2%	2%	8%
							grade 3 events	996	1135	995	1007	1027	4564
								1%	1%	1%	1%	1%	3%
							grade 4 events	951	1128	999	1059	1074	4476
								1%	1%	1%	1%	1%	3%
							grade 5 events	3527	3865	3422	4125	4449	11965
								4%	4%	3%	4%	4%	9%
							grade 6 events	1886	2343	1814	1951	2271	28219
								2%	2%	1%	2%	2%	22%
							grade 7 events	69982	68985	76934	77888	79477	61307
								82%	81%	84%	83%	83%	48%

2.2 Compared Parameters

Parameter	Planned	Actual	Parameter	Planned	Actual
Instrument	ACIS	ACIS	Obspar format version number	7	7
Detector	ACIS-012367	ACIS-012367	Obspar file type	PREDICTED	ACTUAL
Grating	NONE	NONE	Obspar update status	NONE	UPDATED
Data mode	FAINT	FAINT	CCD I0 on	Y	Y
Observation mode	POINTING	POINTING	CCD I1 on	Y	Y
[deg] Pointing RA	69.244258	69.20248434633935	CCD I2 on	Y	Y
[deg] Pointing Dec	50.889711	50.88219440734586	CCD I3 on	Y	Y
[deg] Pointing Roll	165.338237	165.5794022837752	CCD S0 on	N	N
[mm] SIM focus pos	-0.782348	-0.7809083437167272	CCD S1 on	N	N
[mm] SIM defocus	0	0.001439871863259334	CCD S2 on	O2	Y
[mm] SIM translation stage pos	-233.592463	-233.5874344608287	CCD S3 on	O1	Y
[mm] SIM translation stage offset	0	-0.005018542100998502	CCD S4 on	N	N
[s] Observation start time (MET)	280872849.184000	280871822.80726	CCD S5 on	N	N
Observation start date	2006-11-25T20:13:04	2006-11-25T19:57:02	Number of optional ACIS chips dropped	0	0
[s] Observation end time (MET)	280882849.184000	280883374.55781	On-chip summing requested	N	N
Observation end date	2006-11-25T22:59:44	2006-11-25T23:09:34	Subarray requested	NONE	NONE
Read mode	TIMED	TIMED	Alternating exposures requested	N	N
			[s] Primary exposure time	0.000000	3.2

2.3 Aspect



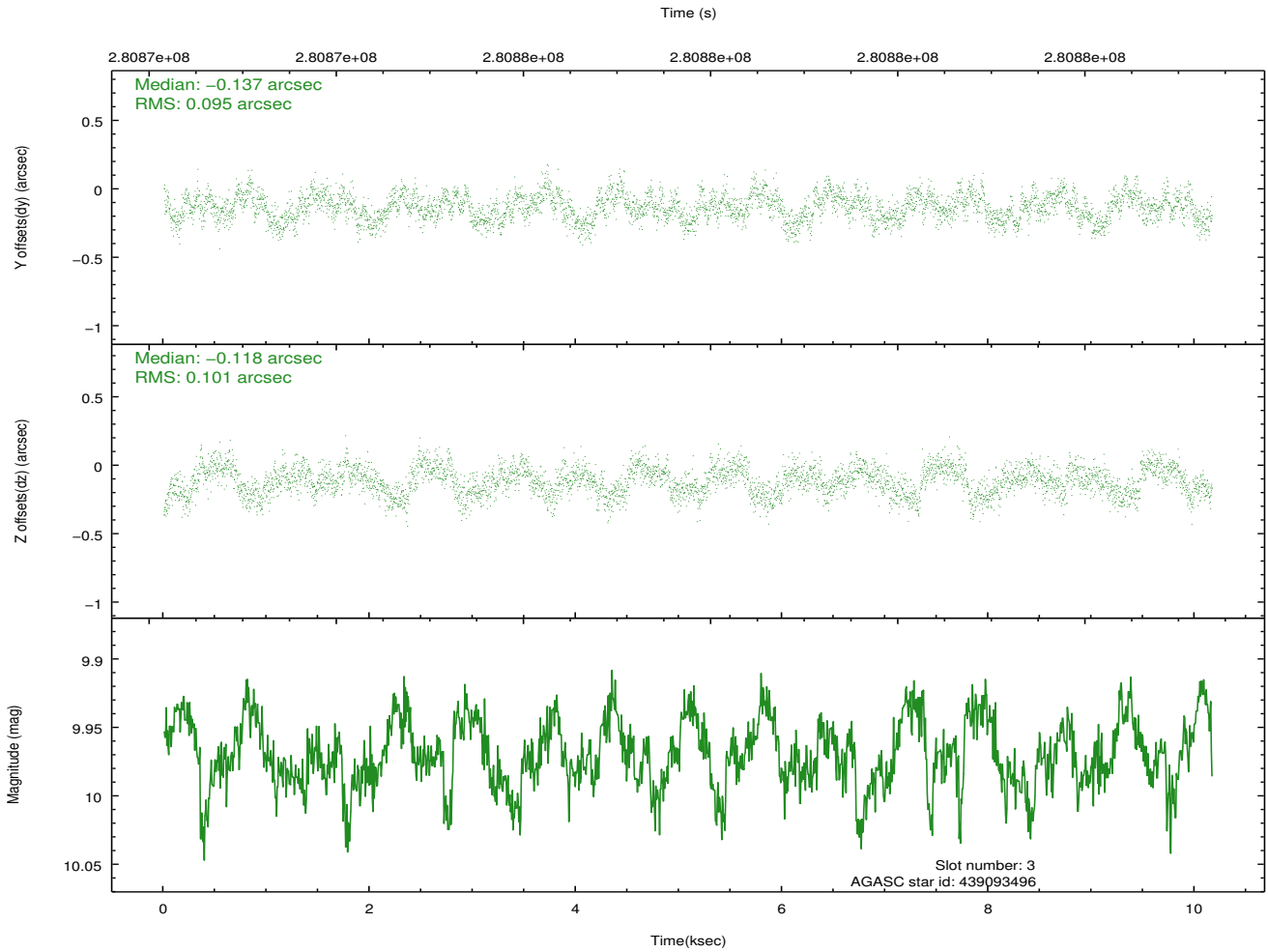
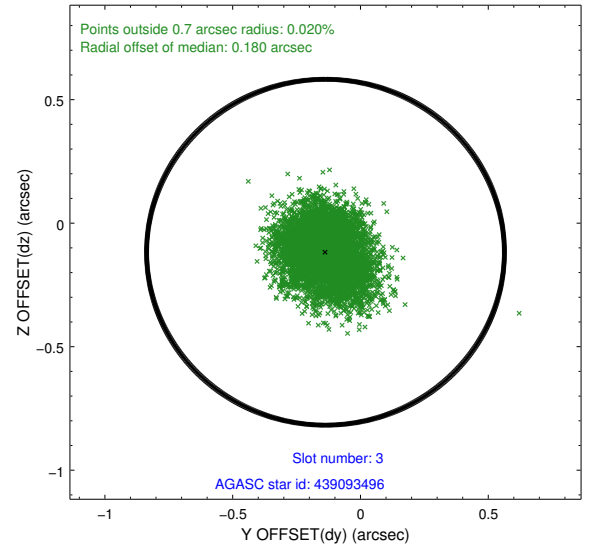
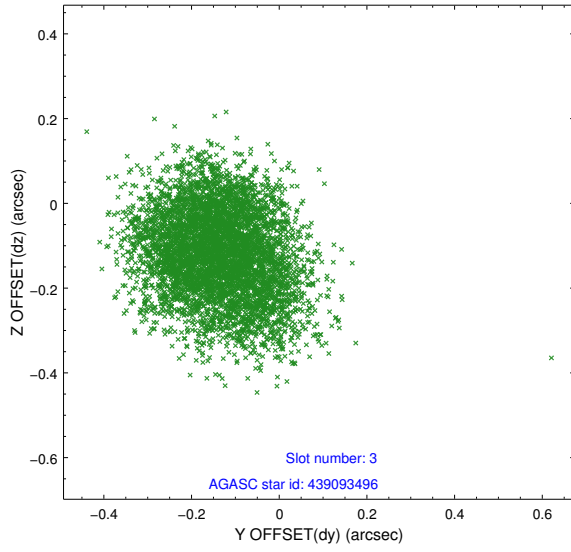


Slot Statistics

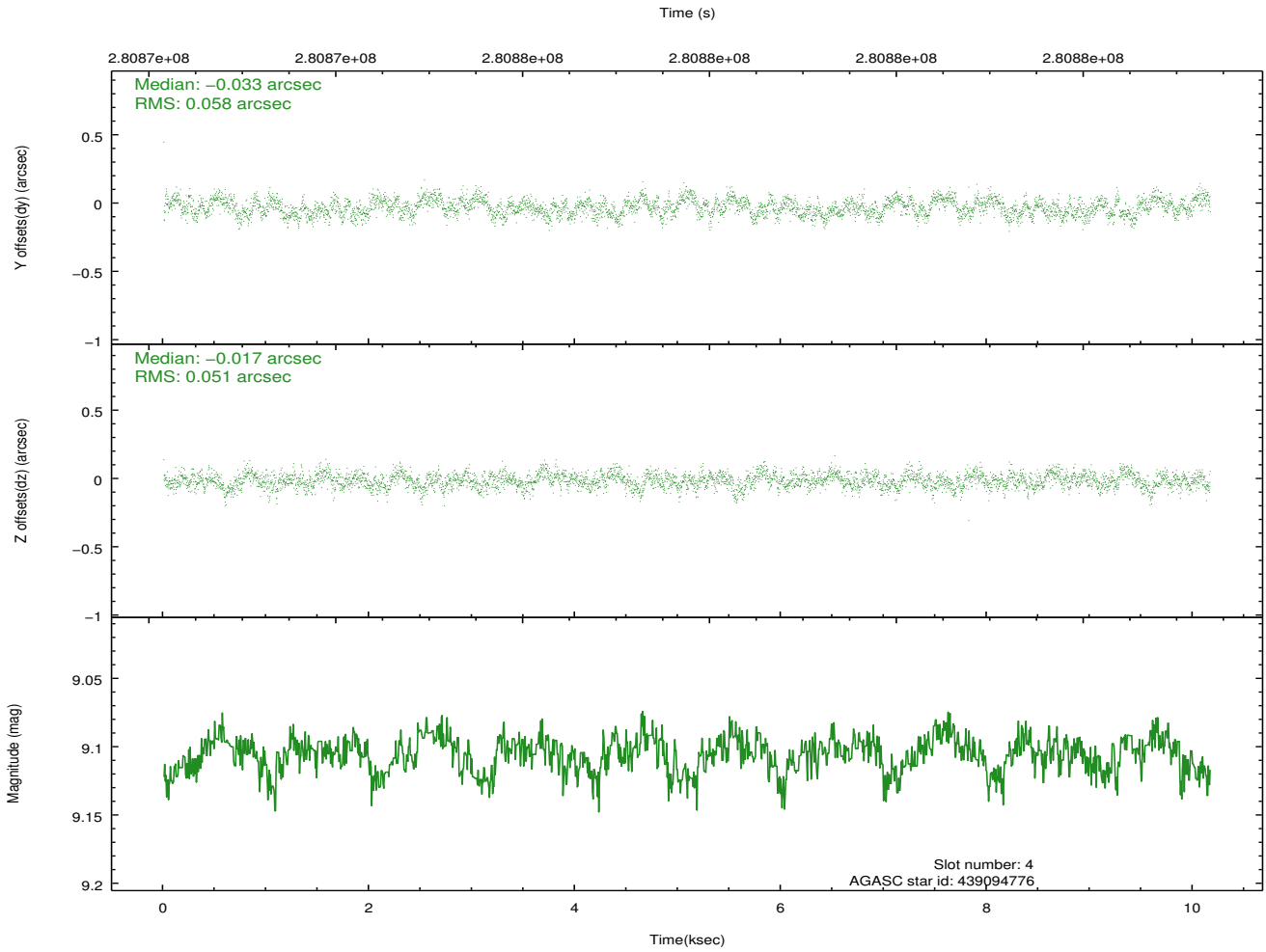
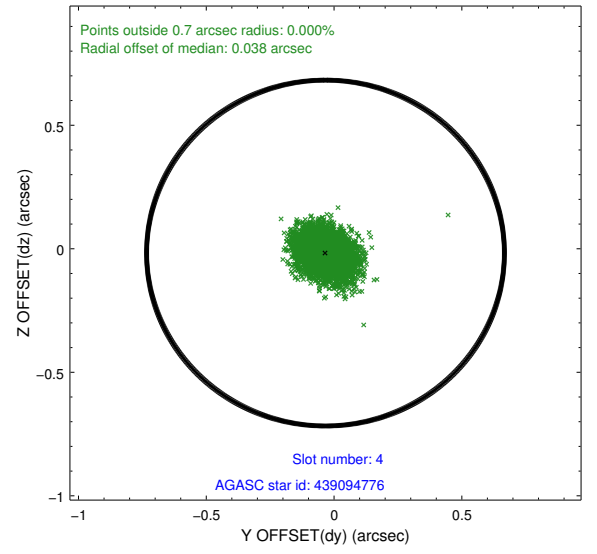
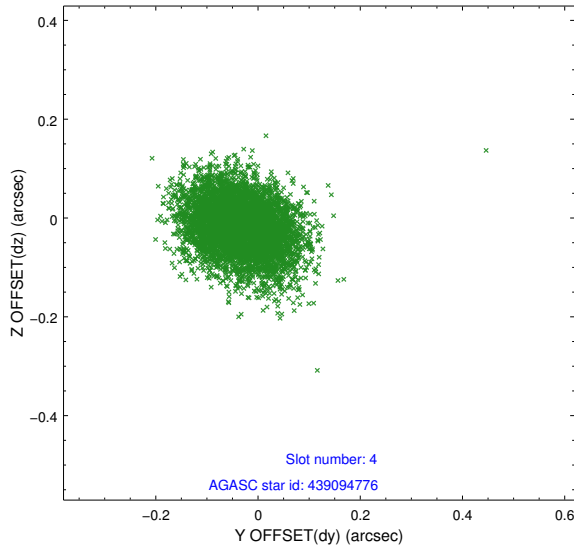
slot	status	id	mag	n_pts	med_dy	med_dz	dr1	dr2	ra	dec	mean_y	mean_z
0	FID	ACIS-I-1	7.25	2479	0.009	-0.053	0.033	0.047	0.000000	0.000000	930.61	-835.56
1	FID	ACIS-I-4	7.18	2479	0.176	0.055	0.026	0.037	0.000000	0.000000	2151.15	1064.06
2	FID	ACIS-I-5	7.23	2480	-0.283	0.067	0.016	0.024	0.000000	0.000000	-1816.98	1062.60
3	GUIDE	439093496	9.97	4956	-0.137	-0.118	0.150	0.231	68.637357	50.528729	1016.14	1603.45
4	GUIDE	439094776	9.11	4955	-0.033	-0.017	0.083	0.132	69.568640	50.505997	-1067.45	1147.19
5	GUIDE	439619608	8.97	4956	0.245	-0.040	0.080	0.126	69.930337	51.208184	-1204.84	-1507.44
6	GUIDE	439621272	7.85	4959	0.110	0.034	0.070	0.113	70.061370	51.107148	-1585.75	-1234.96
7	GUIDE	439619376	8.57	4958	-0.187	0.145	0.065	0.107	70.152539	51.418141	-1488.04	-2368.84

2.4 Star Slots

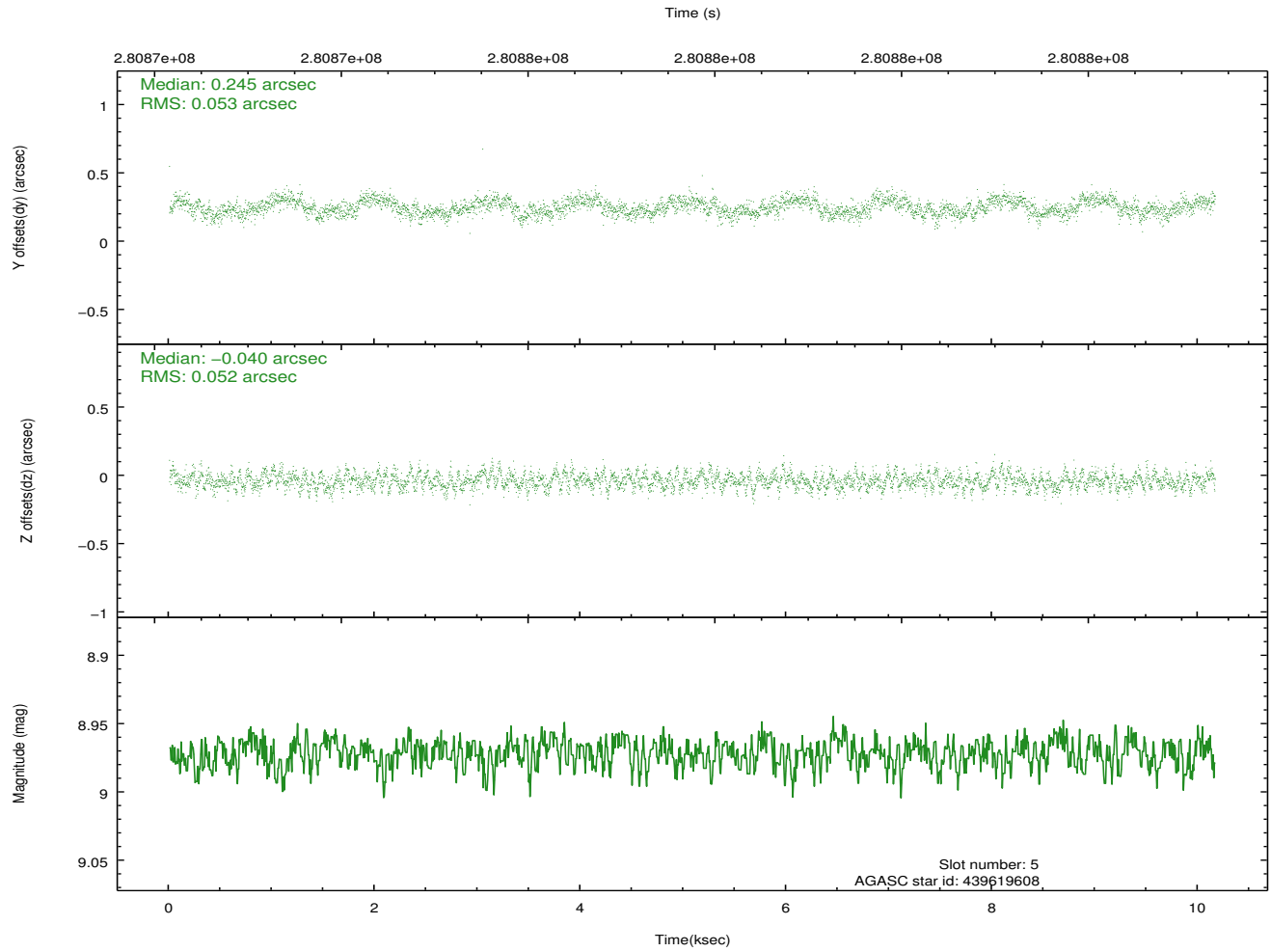
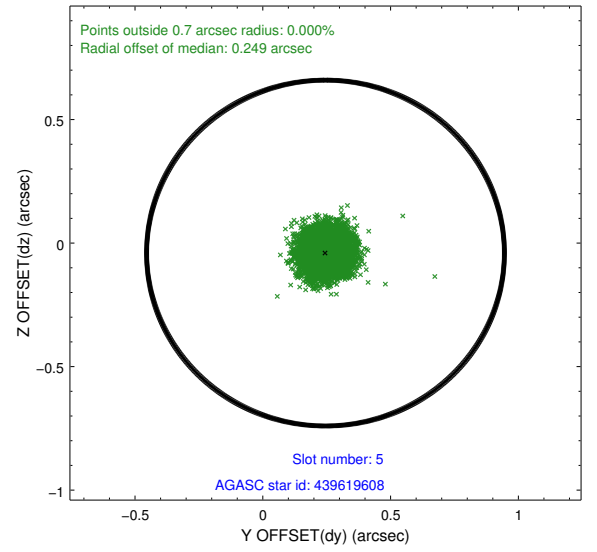
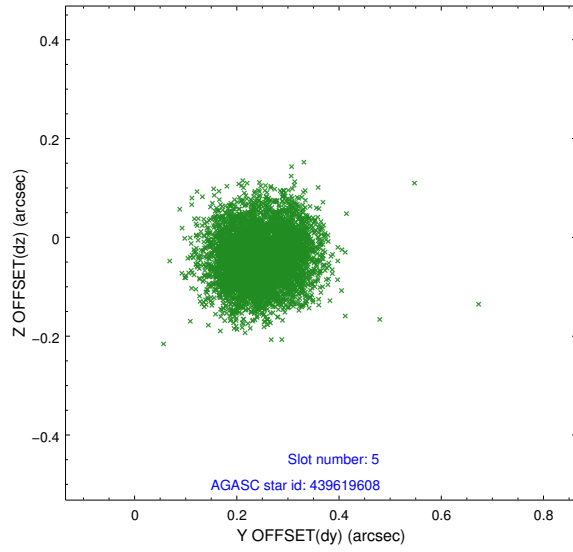
2.4.1 Slot 3



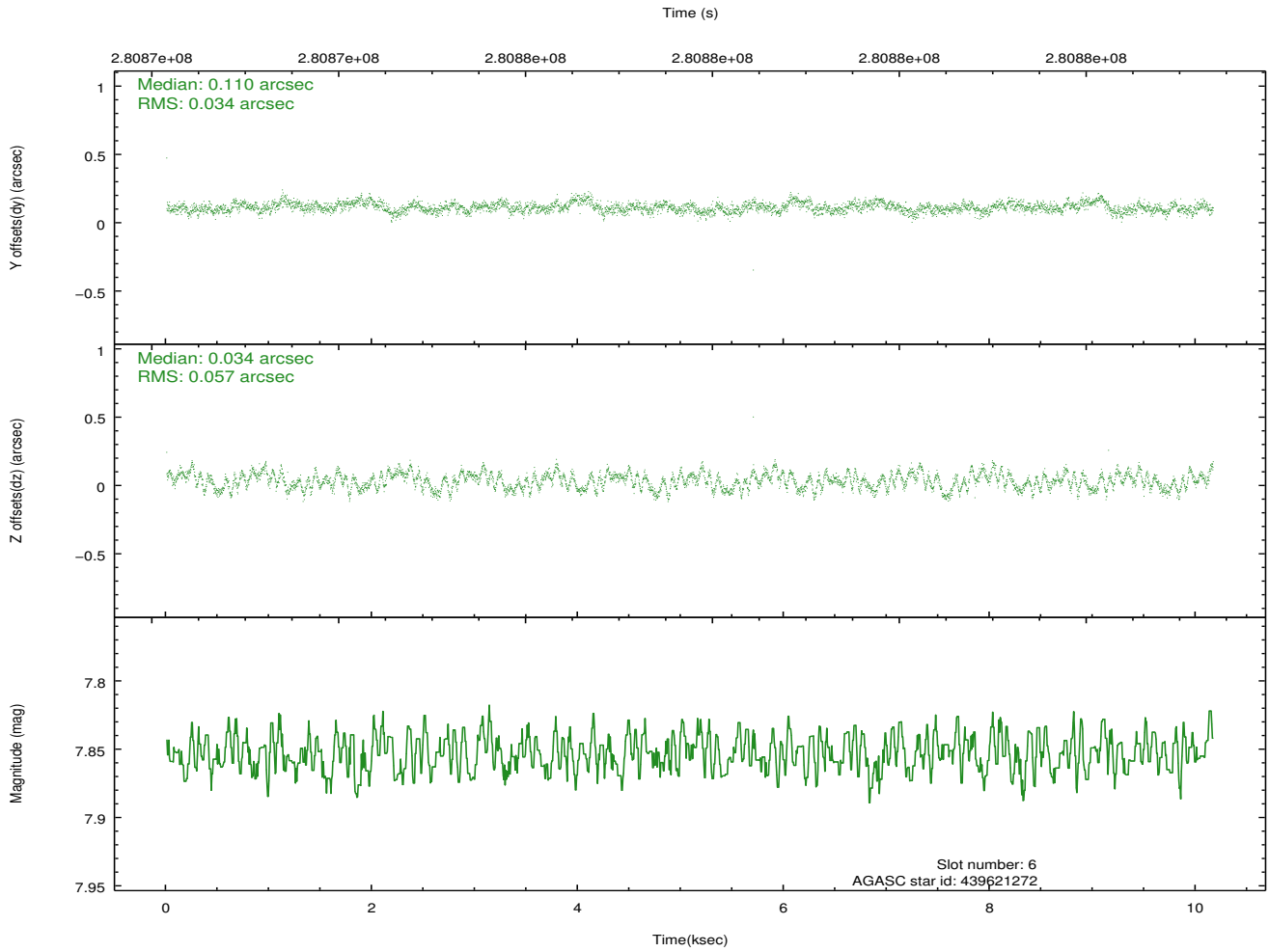
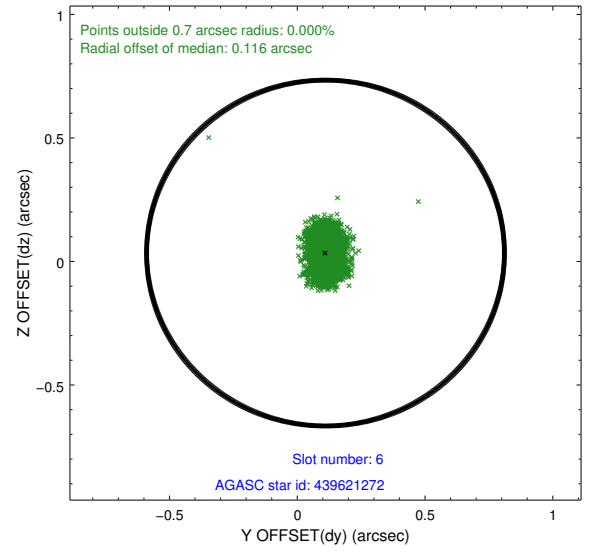
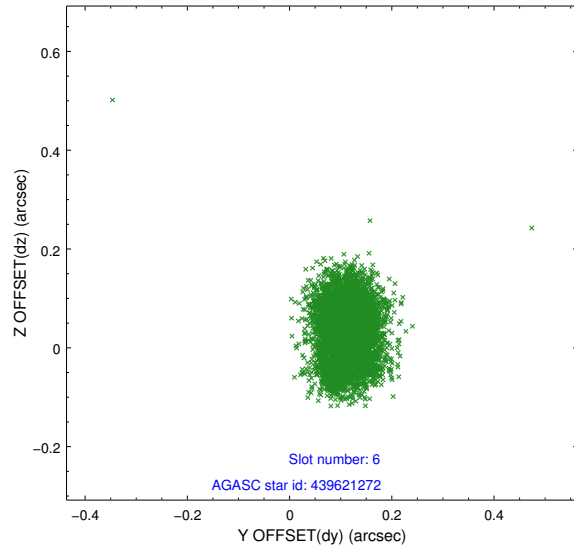
2.4.2 Slot 4



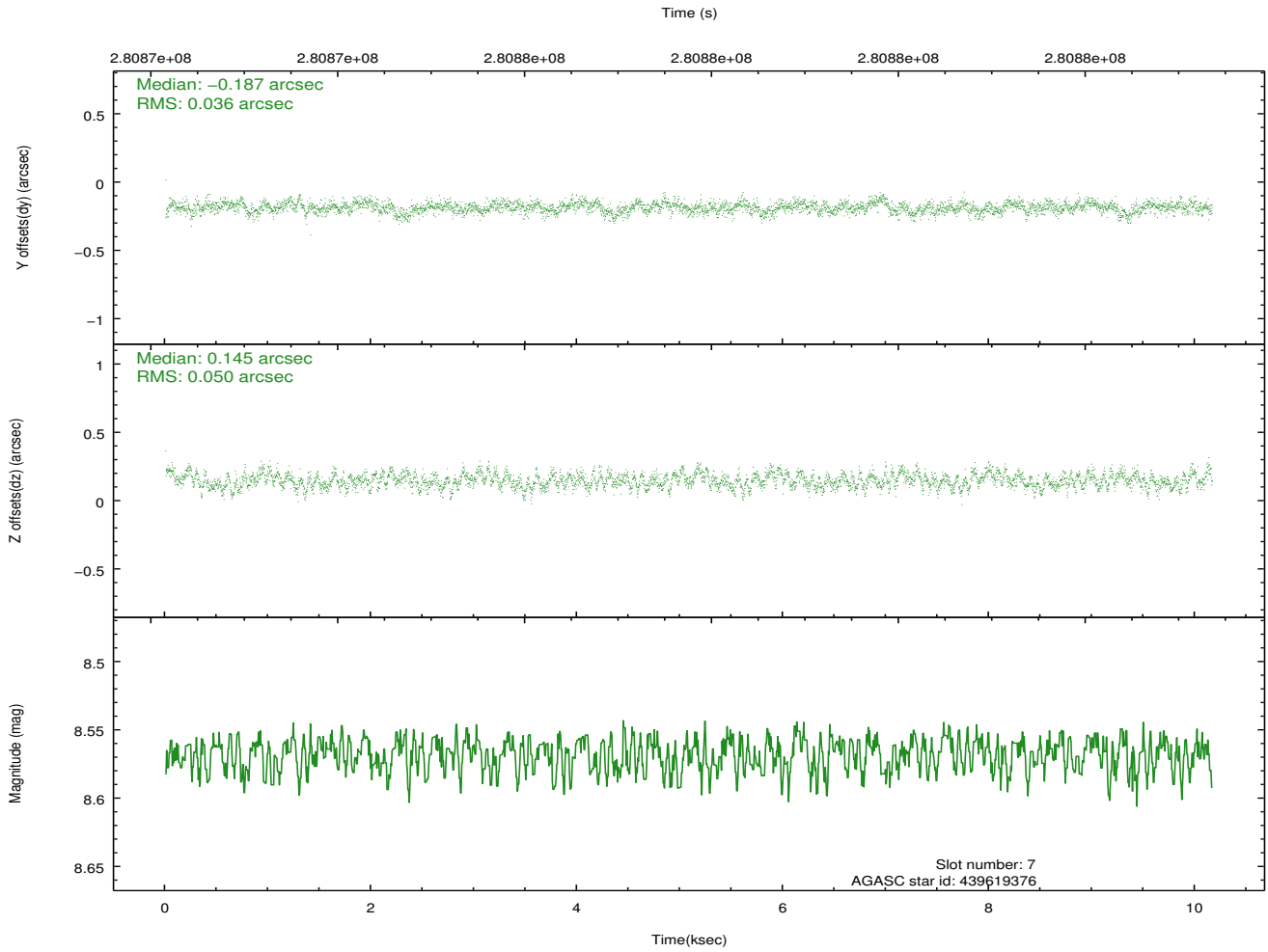
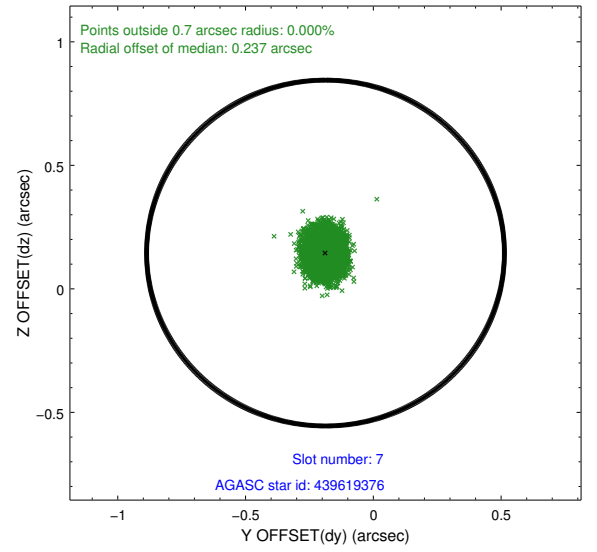
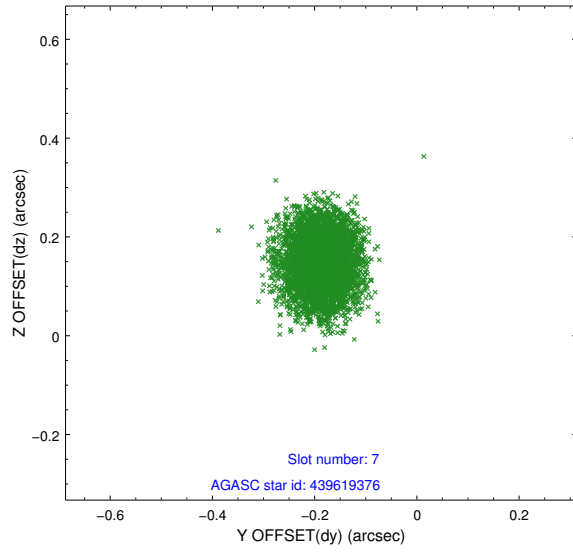
2.4.3 Slot 5



2.4.4 Slot 6

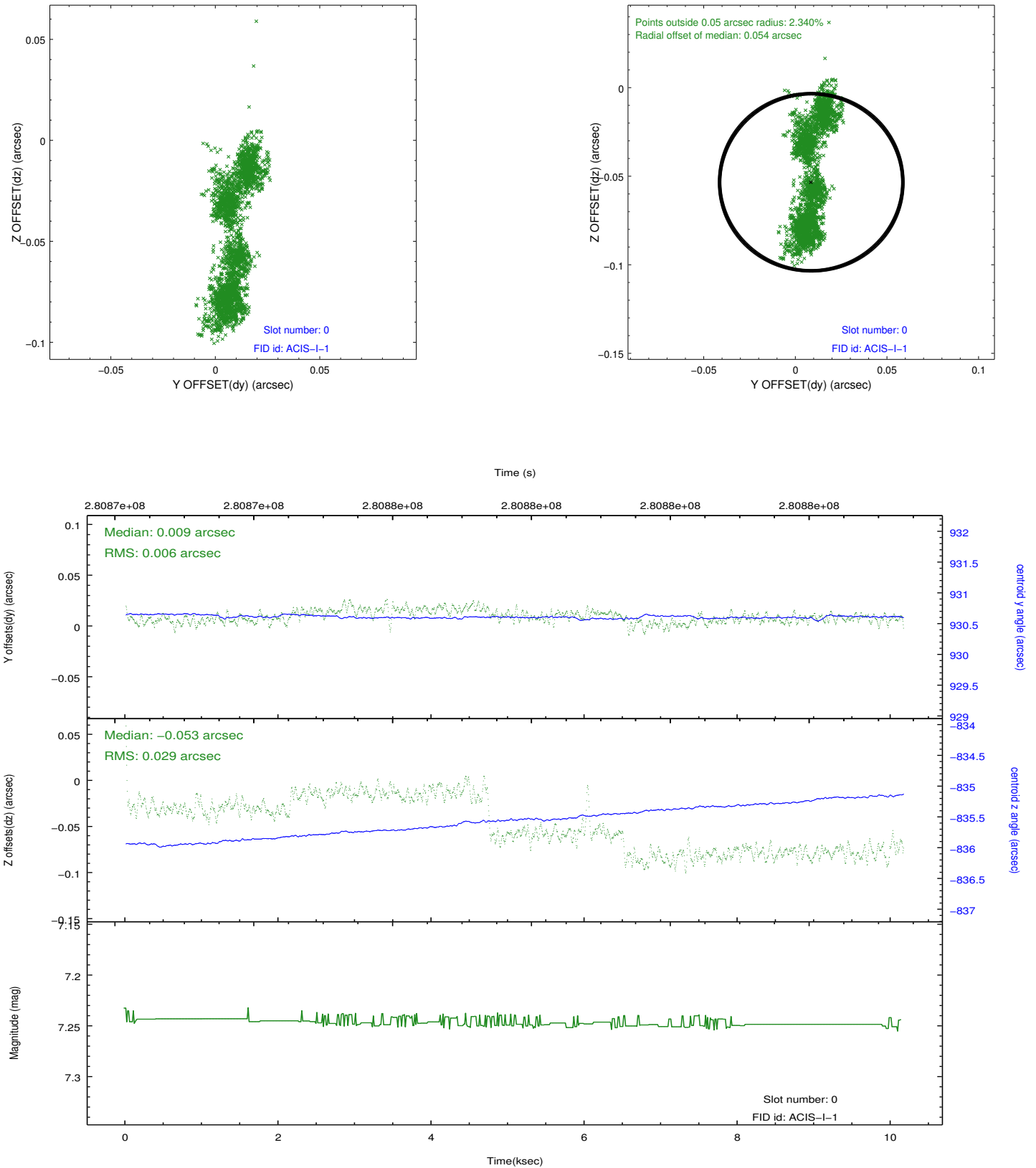


2.4.5 Slot 7

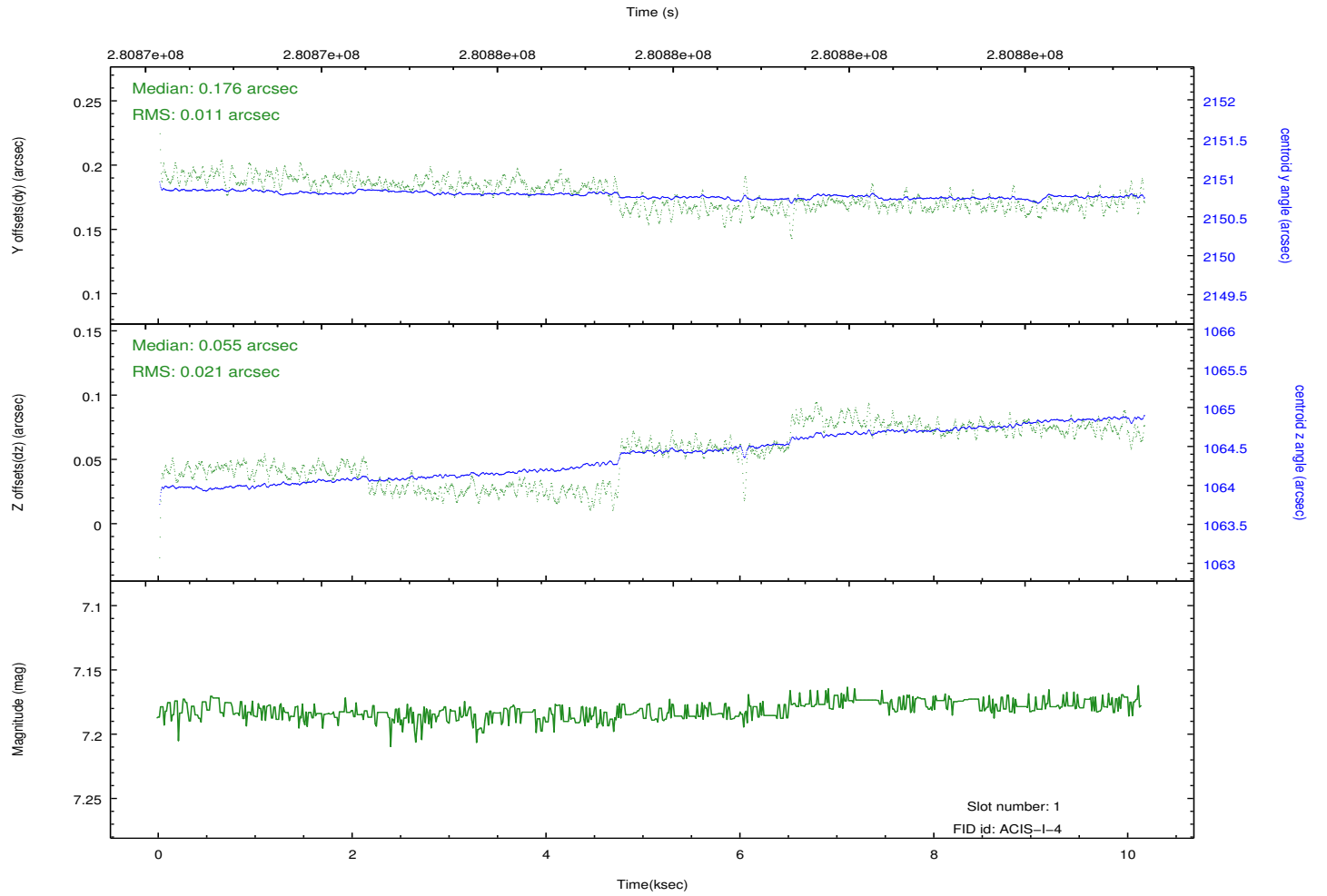
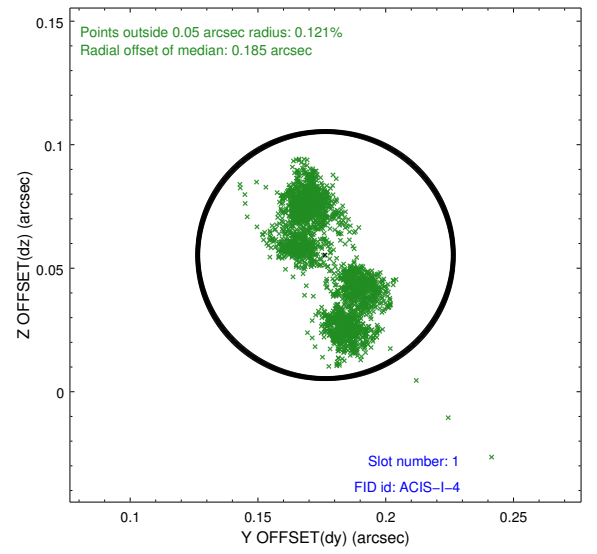
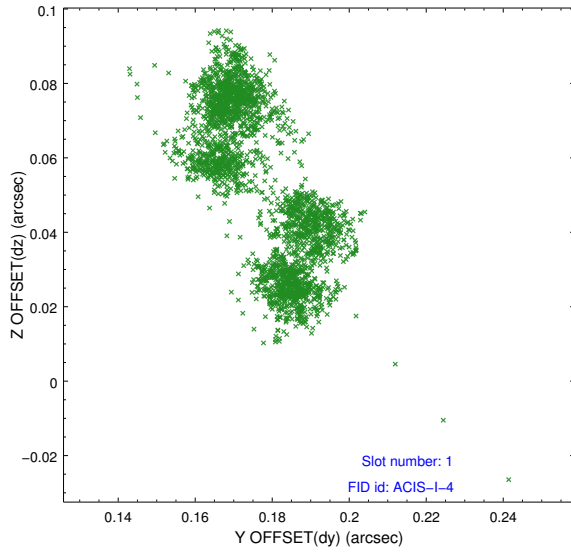


2.5 FID Slots

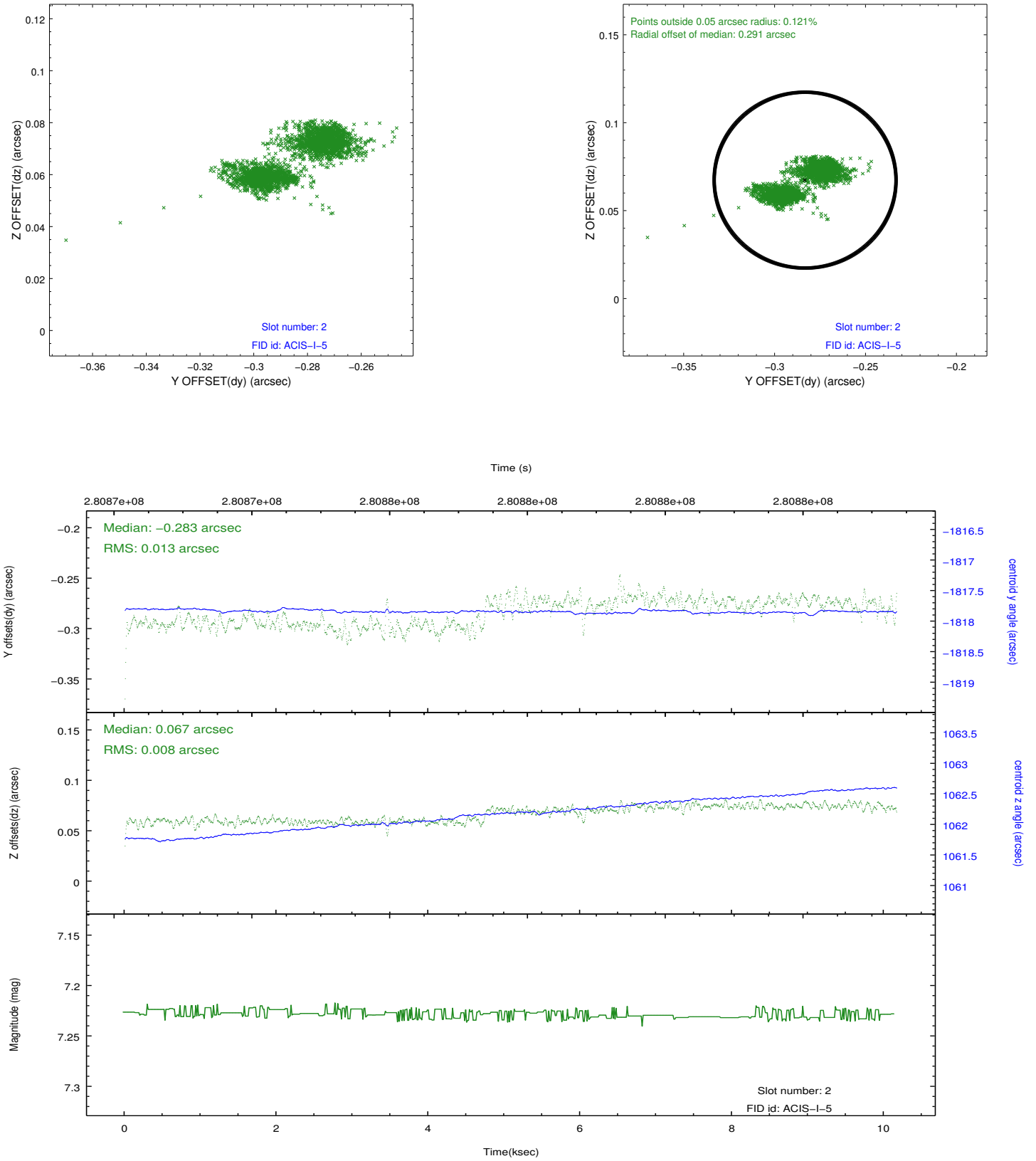
2.5.1 Slot 0



2.5.2 Slot 1



2.5.3 Slot 2



A Summary

A.1 Status

V&V Scientist	Jen Lauer
V&V Date (YYYY-MM-DD)	2012.04.17
V&V Edition	1
V&V Disposition and Status	OK
V&V Charge Time	10.0831999

A.2 Comments