

V&V Reference Report

L2 ASCDS Version : 8.4.3.1

Observation 7386 - L2 Version 2
Chandra X-Ray Center

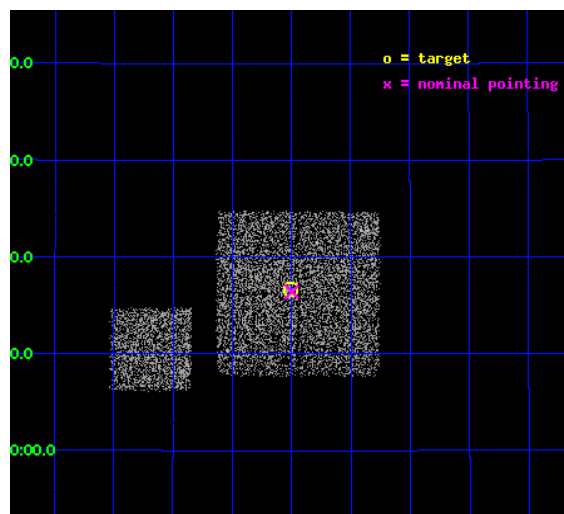
L2 Processing Date : Apr 7 2012

Contents

1	Front	2
2	OBI	3
2.1	OBI	3
2.1.1	Images	3
2.1.2	Bias	3
2.1.3	Parameters	4
2.1.4	Events	4
2.2	Compared Parameters	5
2.3	Aspect	6
2.4	Star Slots	9
2.4.1	Slot 3	9
2.4.2	Slot 4	10
2.4.3	Slot 5	11
2.4.4	Slot 6	12
2.4.5	Slot 7	13
2.5	FID Slots	14
2.5.1	Slot 0	14
2.5.2	Slot 1	15
2.5.3	Slot 2	16
A	Summary	17
A.1	Status	17
A.2	Comments	17

1 Front

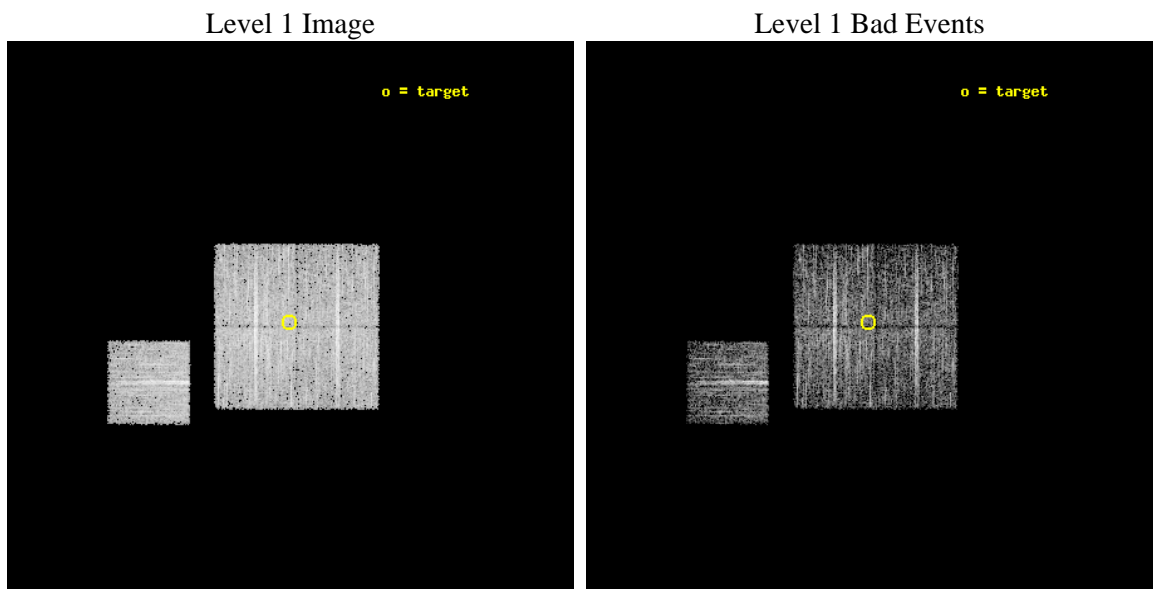
seq_num	900483	Sequence number
obs_id	7386	Observation id
title	Chandra Large Scale Survey of the NOAO Bootes Deep Field (A)	Propo
observer	Dr Stephen Murray	Principal investigator
object	Bootes2 29	Source name
dtcycle	0	
cycle	P	events from which exps? Prim/Second/Both
ra_targ	217.37668	Observer's specified target RA [deg]
dec_targ	34.27789	Observer's specified target Dec [deg]
ra_nom	217.37450972101	Nominal RA [deg]
dec_nom	34.273654693777	Nominal Dec [deg]
roll_nom	270.20989620725	Nominal Roll [deg]
revision	2	Processing version of data
ontime	4478.6621716022	Sum of GTIs [s]
livetime	4420.1451531871	Livetime [s]
ontime0	4478.5390515924	Sum of GTIs [s]
ontime1	4478.5800716877	Sum of GTIs [s]
ontime2	4478.6211315989	Sum of GTIs [s]
ontime3	4478.6621716022	Sum of GTIs [s]
ontime6	4478.4980115891	Sum of GTIs [s]
l2events	12125	Number of level 2 events



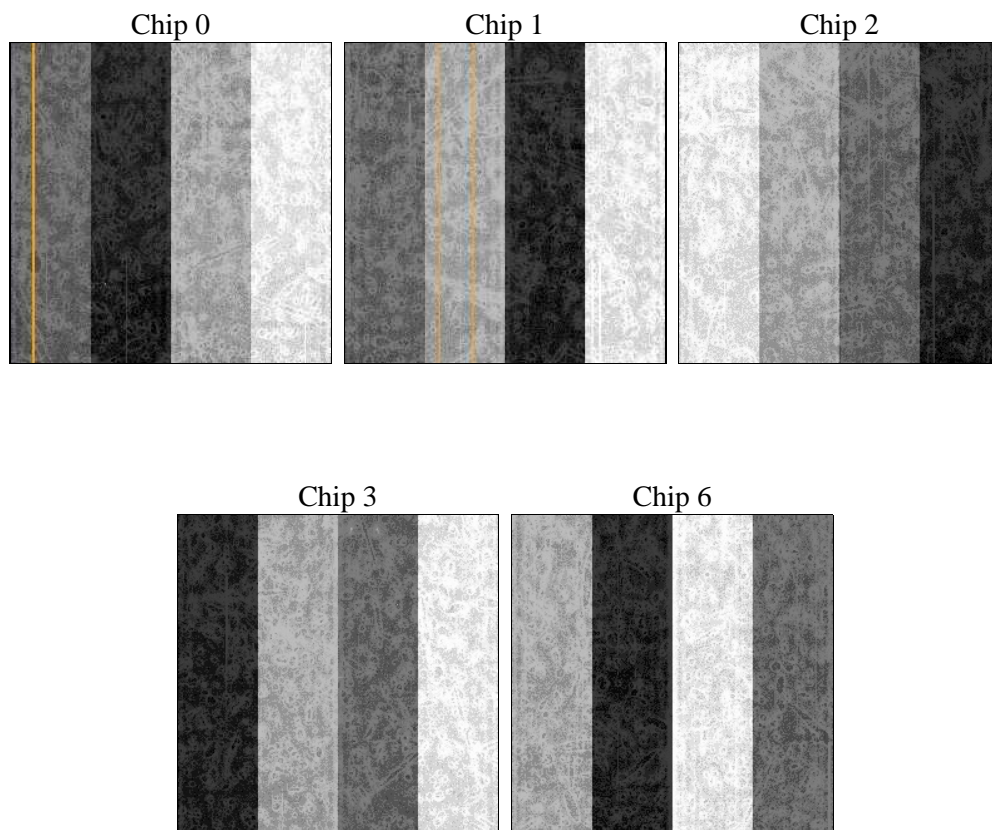
2 OBI

2.1 OBI

2.1.1 Images



2.1.2 Bias



2.1.3 Parameters

obi_num	0	Obi number	sched_exp_time	4700.000000	[s] Scheduled observation exposure time
ascdsver	8.4.3.1	Processing system revision	ontime	4478.6621716022	Sum of GTIs [s]
caldsver	4.4.9	 	ontime0	4478.5390515924	Sum of GTIs [s]
date	2012-04-07T12:58:51	Date and time of file creation	ontime1	4478.5800716877	Sum of GTIs [s]
revision	2	Processing version of data	ontime2	4478.6211315989	Sum of GTIs [s]
			ontime3	4478.6621716022	Sum of GTIs [s]
			ontime6	4478.4980115891	Sum of GTIs [s]
			l1events	149162	Number of level 1 events

2.1.4 Events

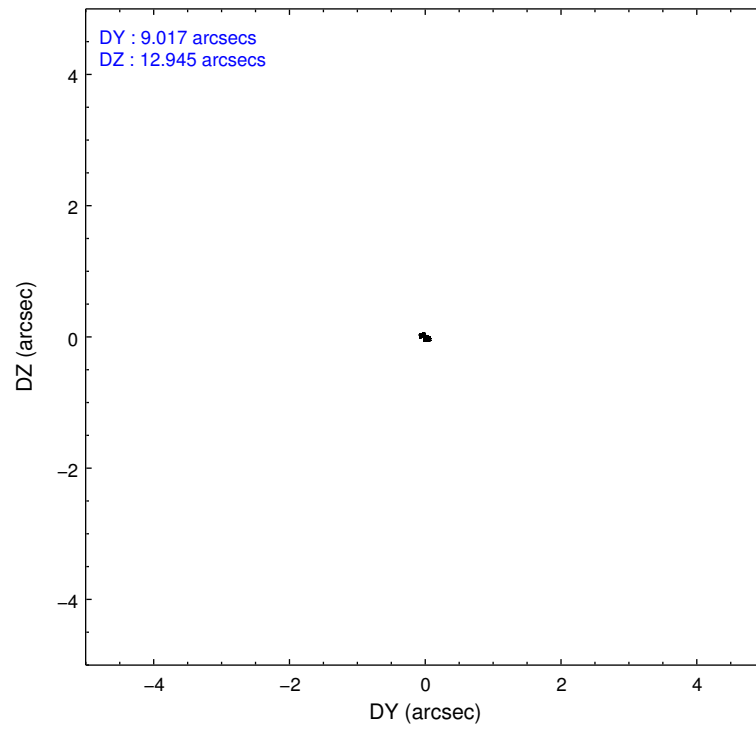
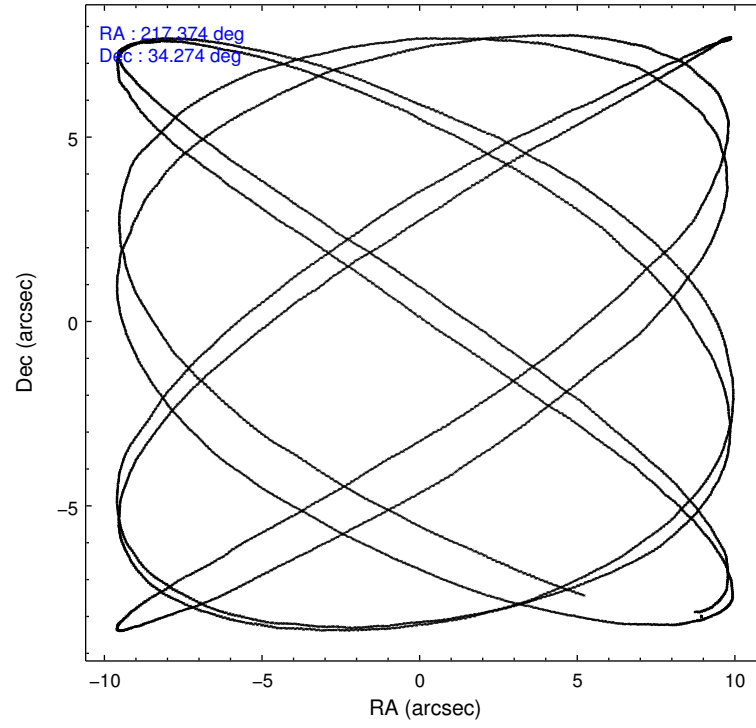
	ccd 0	ccd 1	ccd 2	ccd 3	ccd 6
level 1 events	28282	26704	33819	30441	29916
rejected events	25438	23531	30806	27679	26816
rejected %	89%	88%	91%	90%	89%

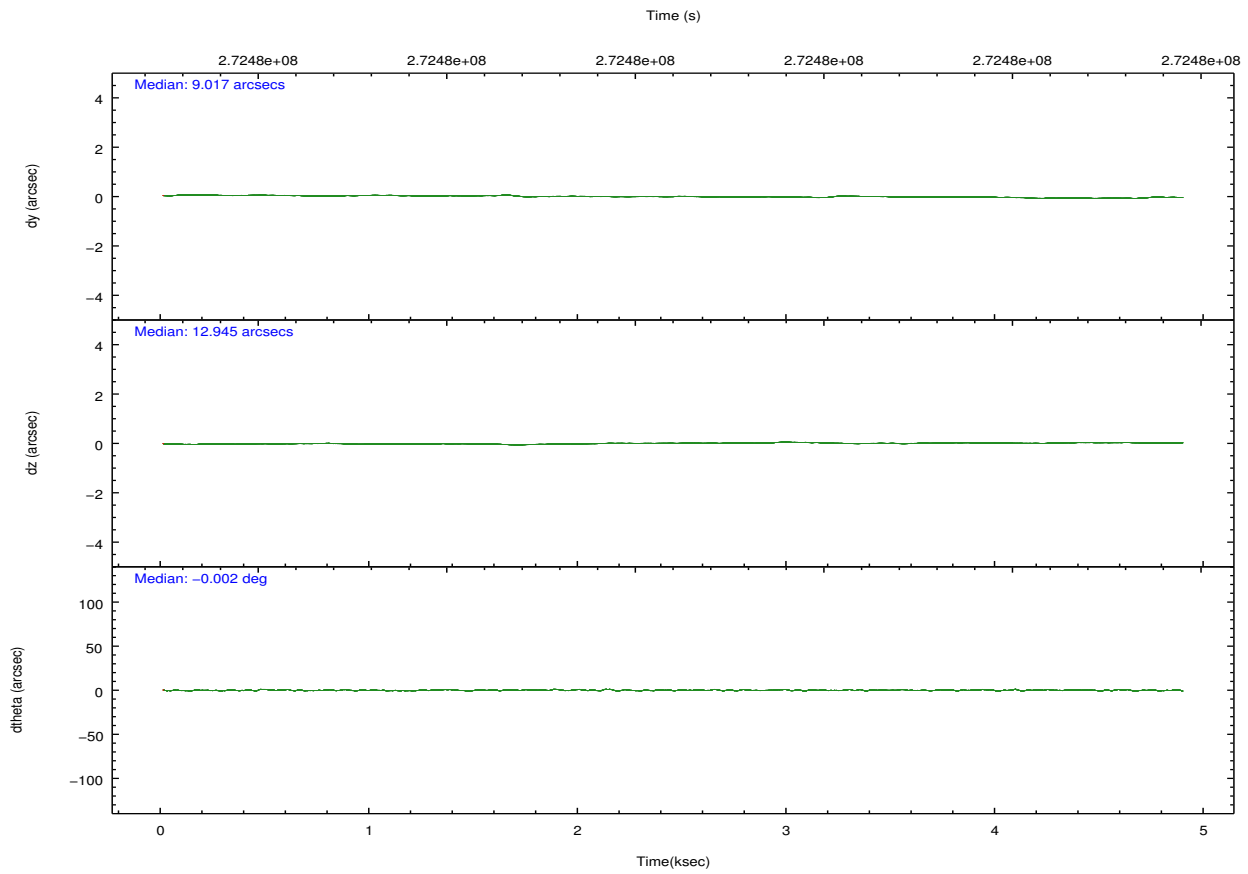
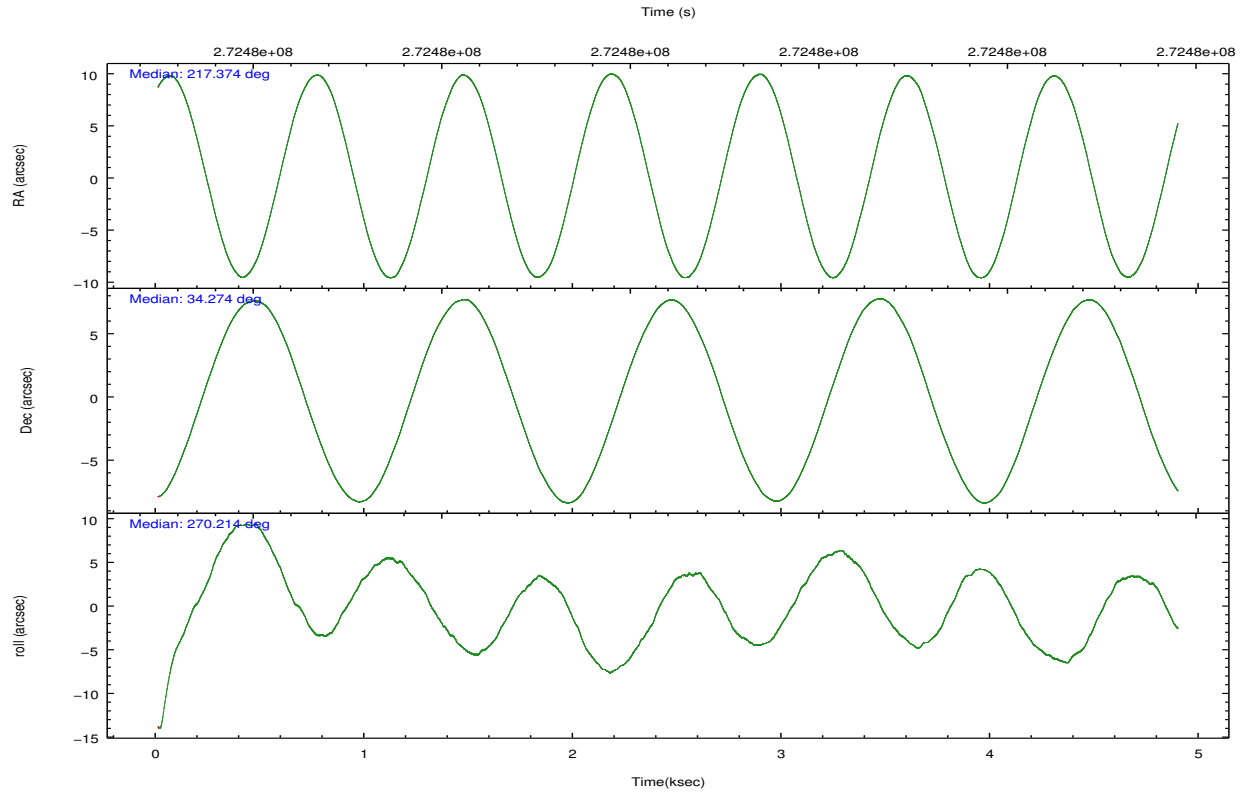
	ccd 0	ccd 1	ccd 2	ccd 3	ccd 6
grade 0 events	1023	1113	1127	971	1135
	3%	4%	3%	3%	3%
grade 1 events	14	15	20	15	12
	0%	0%	0%	0%	0%
grade 2 events	690	690	755	582	697
	2%	2%	2%	1%	2%
grade 3 events	295	377	285	340	329
	1%	1%	0%	1%	1%
grade 4 events	298	348	345	298	347
	1%	1%	1%	0%	1%
grade 5 events	888	926	794	1042	1012
	3%	3%	2%	3%	3%
grade 6 events	540	646	503	571	594
	1%	2%	1%	1%	1%
grade 7 events	24534	22589	29990	26622	25790
	86%	84%	88%	87%	86%

2.2 Compared Parameters

Parameter	Planned	Actual	Parameter	Planned	Actual
Instrument	ACIS	ACIS	Obspar format version number	7	7
Detector	ACIS-01236	ACIS-01236	Obspar file type	PREDICTED	ACTUAL
Grating	NONE	NONE	Obspar update status	NONE	UPDATED
Data mode	VFAINT	VFAINT	Number of optional ACIS chips dropped	0	0
Observation mode	POINTING	POINTING	On-chip summing requested	N	N
[deg] Pointing RA	217.357729	217.3745097210136	Subarray requested	NONE	NONE
[deg] Pointing Dec	34.297232	34.27365469377699	Alternating exposures requested	N	N
[deg] Pointing Roll	270.010694	270.209896207254	[s] Primary exposure time	0.000000	3.1
[mm] SIM focus pos	-0.782348	-0.7809083437167272			
[mm] SIM defocus	0	0.001439871863259334			
[mm] SIM translation stage pos	-233.592463	-233.5874344608287			
[mm] SIM translation stage offset	0	-0.005018542100998502			
[s] Observation start time (MET)	272474956.184000	272474580.12415			
Observation start date	2006-08-20T15:28:11	2006-08-20T15:23:00			
[s] Observation end time (MET)	272479656.184000	272479790.19939			
Observation end date	2006-08-20T16:46:31	2006-08-20T16:49:50			
Read mode	TIMED	TIMED			

2.3 Aspect



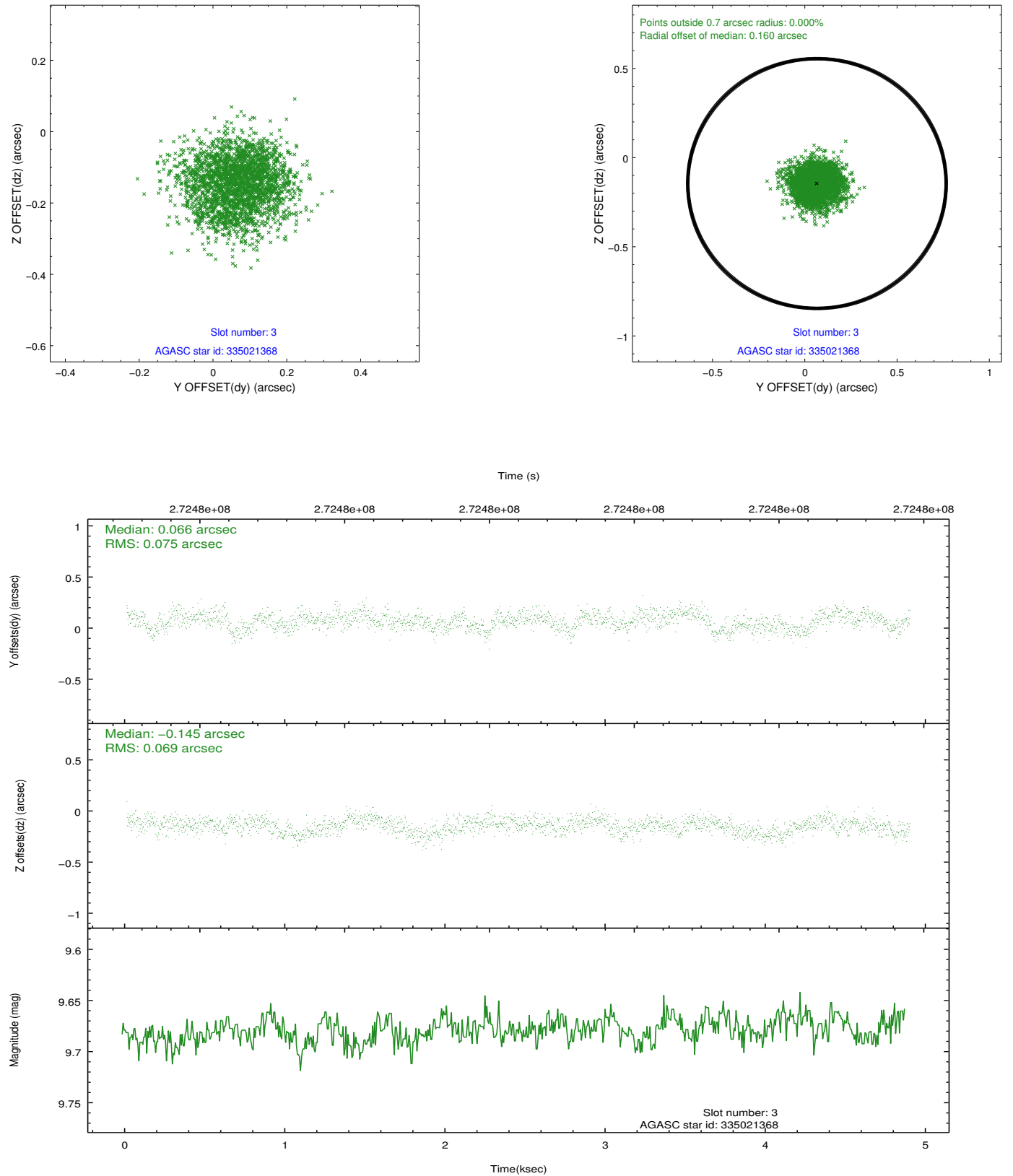


Slot Statistics

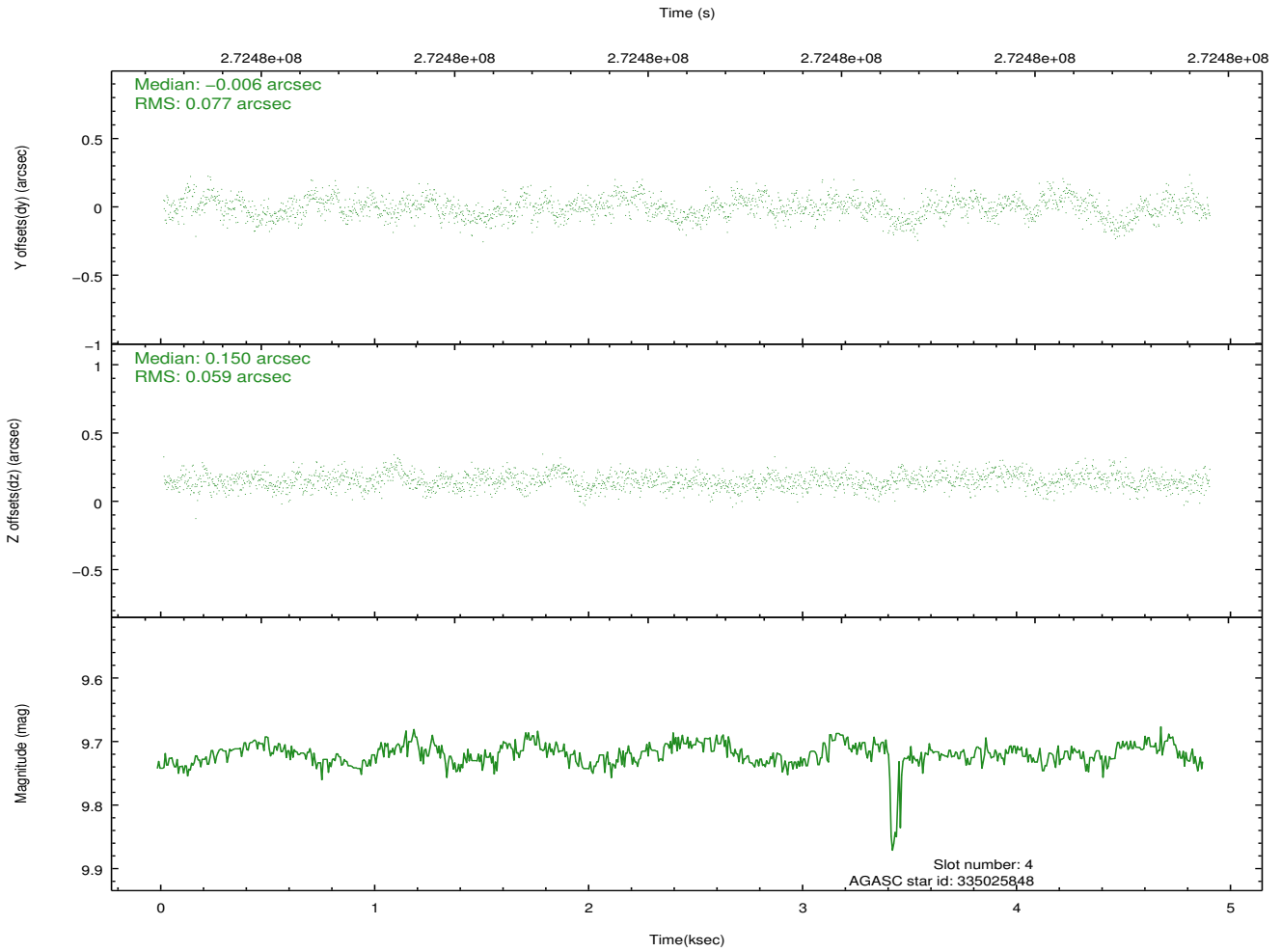
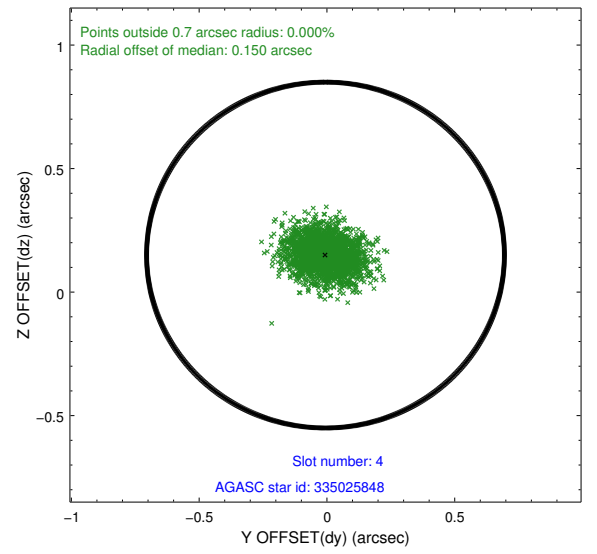
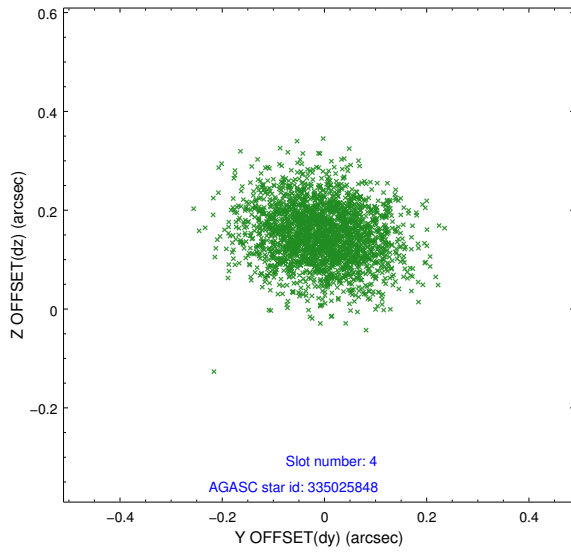
slot	status	id	mag	n_pts	med_dy	med_dz	dr1	dr2	ra	dec	mean_y	mean_z
0	FID	ACIS-I-1	7.24	1193	0.047	-0.013	0.006	0.010	0.000000	0.000000	930.65	-836.51
1	FID	ACIS-I-5	7.23	1193	-0.205	0.054	0.006	0.011	0.000000	0.000000	-1817.01	1060.44
2	FID	ACIS-I-6	7.24	1193	0.066	0.029	0.007	0.011	0.000000	0.000000	394.87	1706.32
3	GUIDE	335021368	9.68	2382	0.066	-0.145	0.111	0.170	217.529643	33.934817	1305.06	513.18
4	GUIDE	335025848	9.72	2378	-0.006	0.150	0.102	0.167	217.530531	33.778292	1869.02	517.16
5	GUIDE	335028696	9.19	2386	0.157	-0.080	0.087	0.147	217.260519	33.844112	1632.57	-290.77
6	GUIDE	335030384	8.83	2386	0.007	0.019	0.079	0.127	216.806407	34.722197	-1533.45	-1630.90
7	GUIDE	335023248	8.92	2384	-0.226	0.053	0.080	0.127	217.634832	34.944512	-2331.39	817.89

2.4 Star Slots

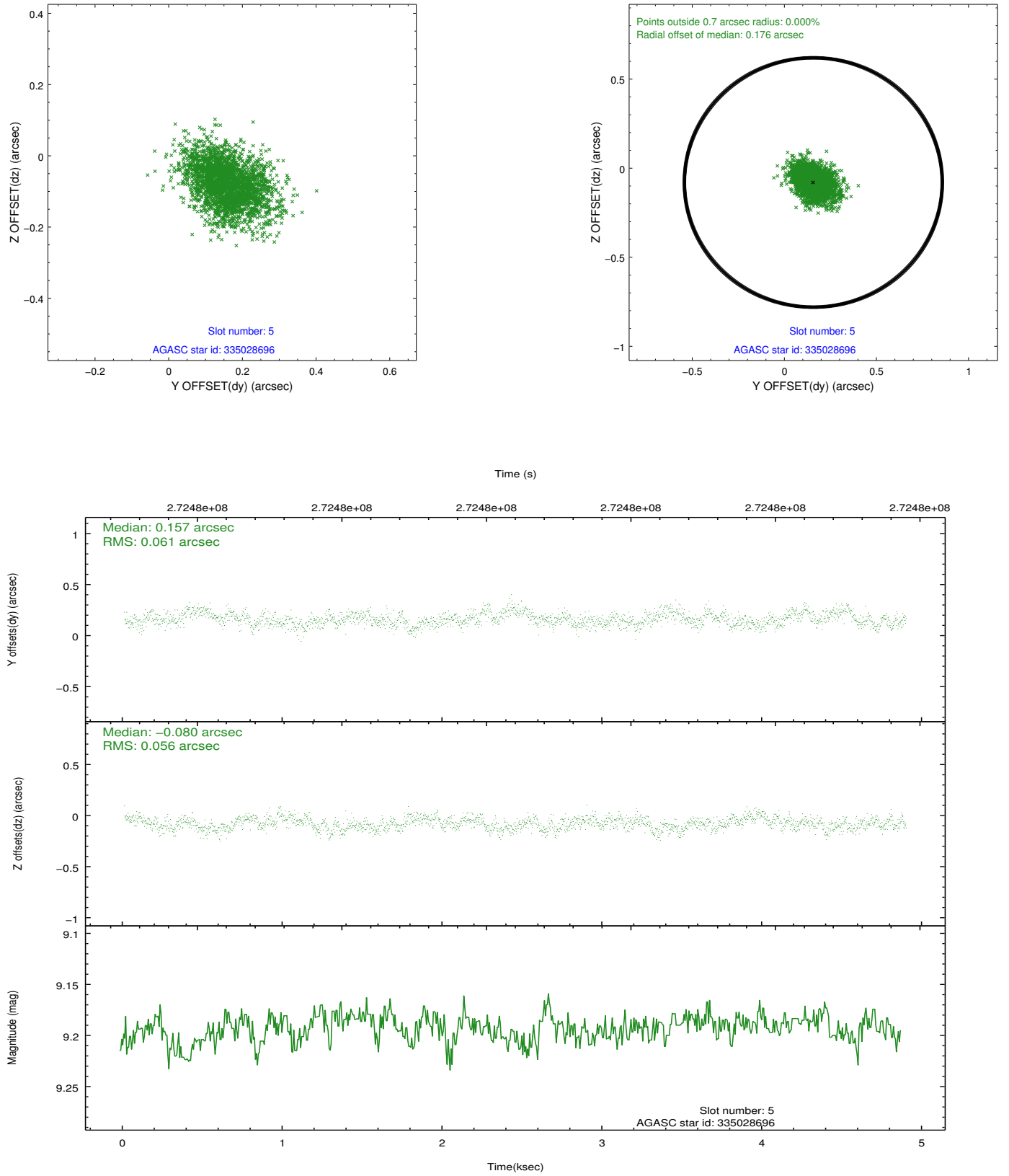
2.4.1 Slot 3



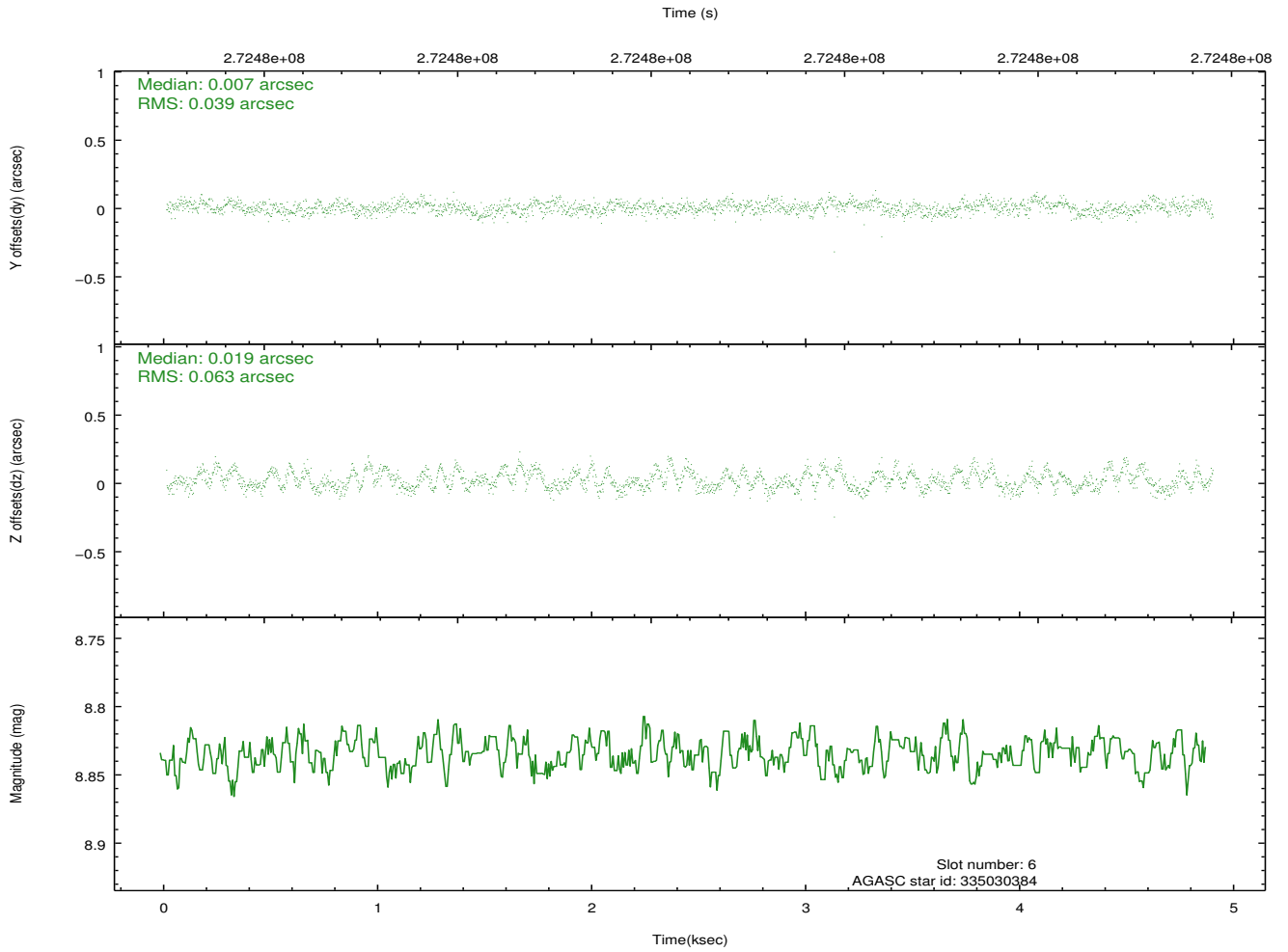
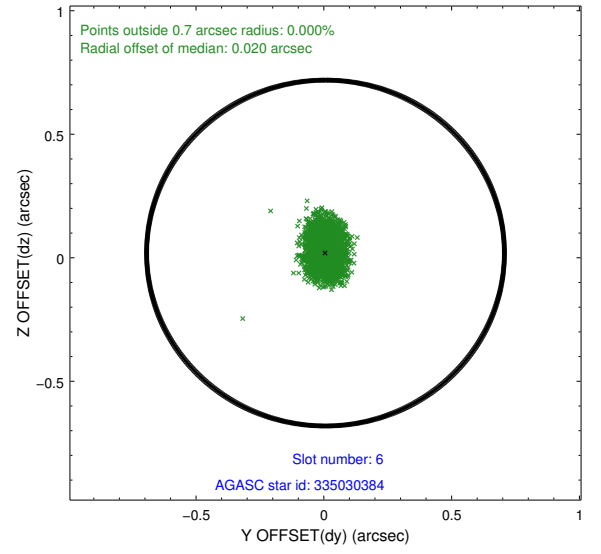
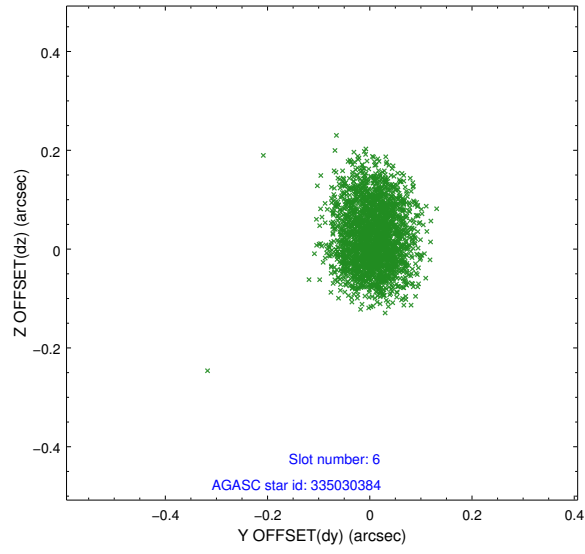
2.4.2 Slot 4



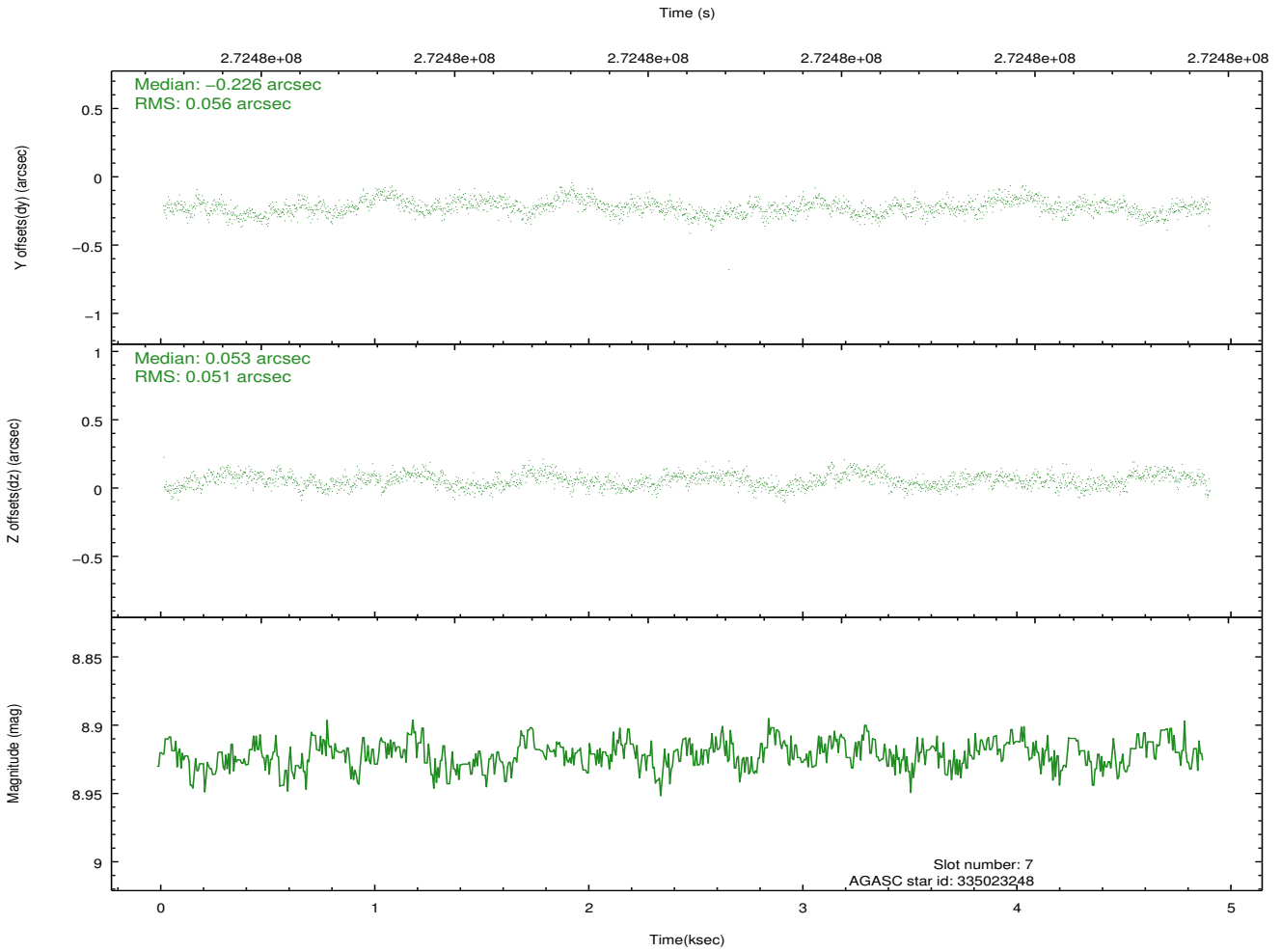
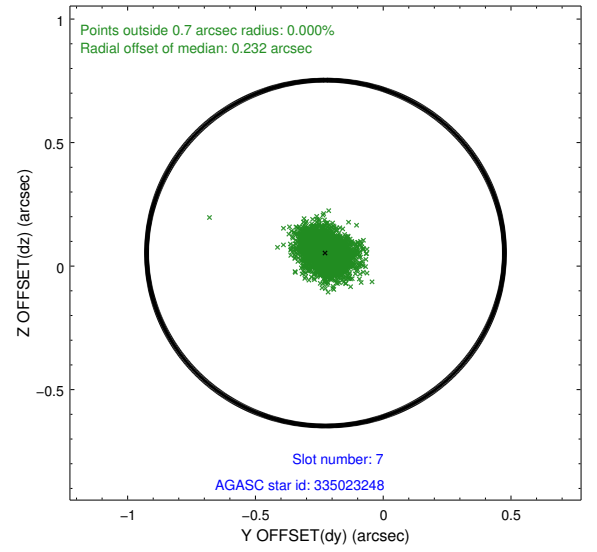
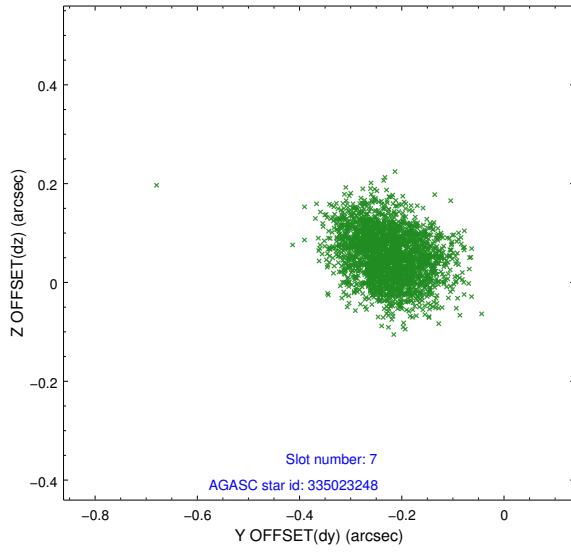
2.4.3 Slot 5



2.4.4 Slot 6

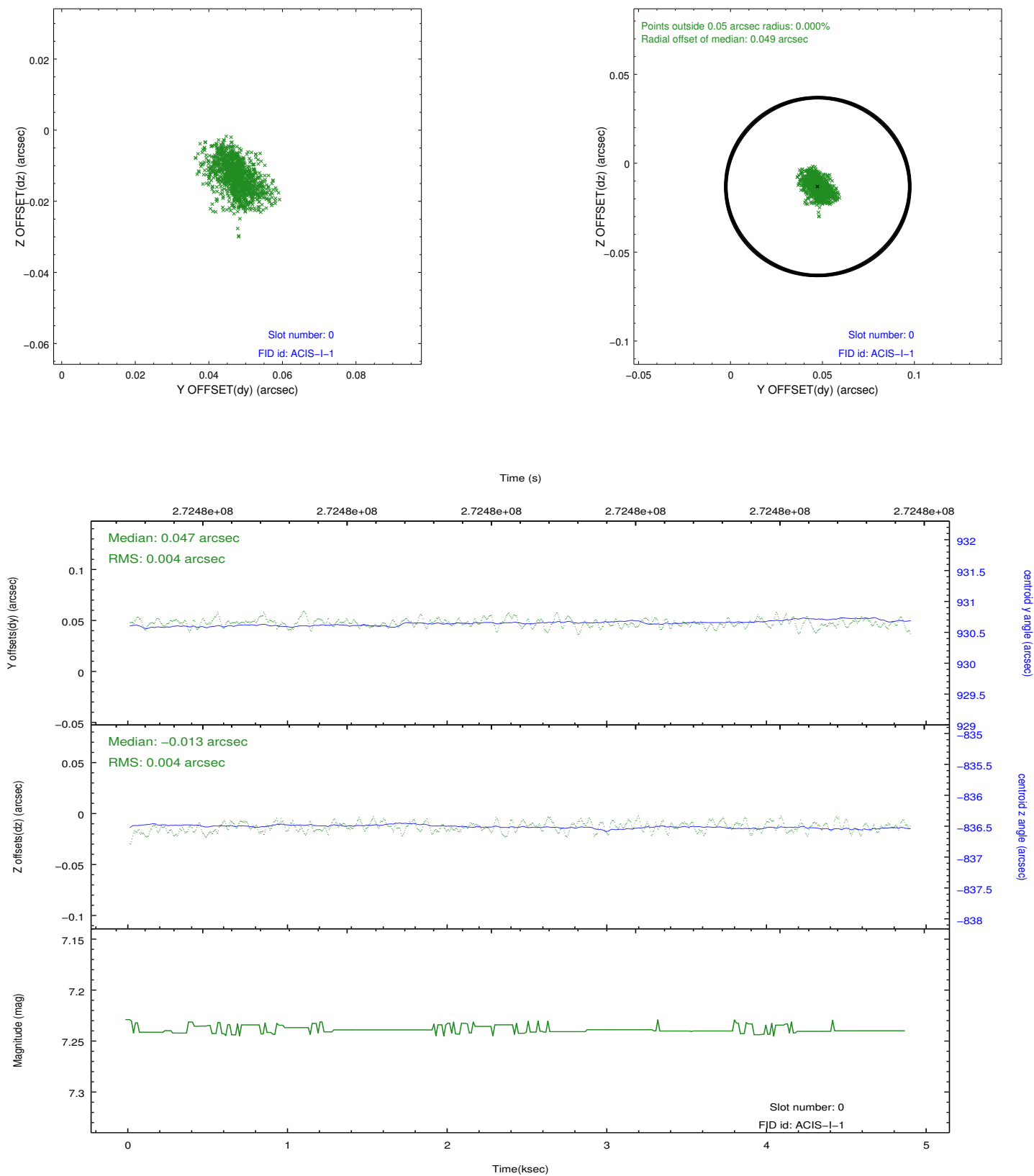


2.4.5 Slot 7

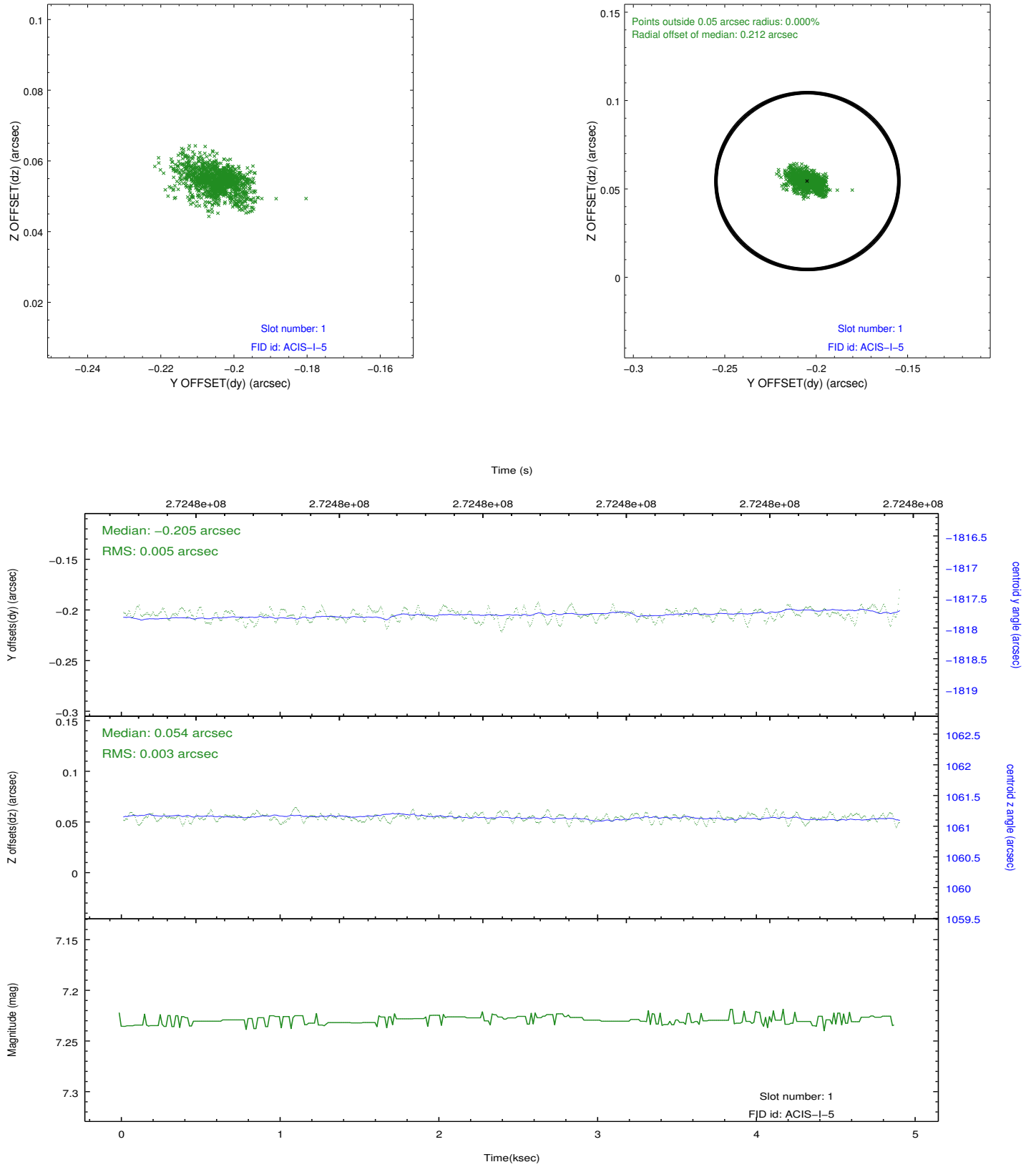


2.5 FID Slots

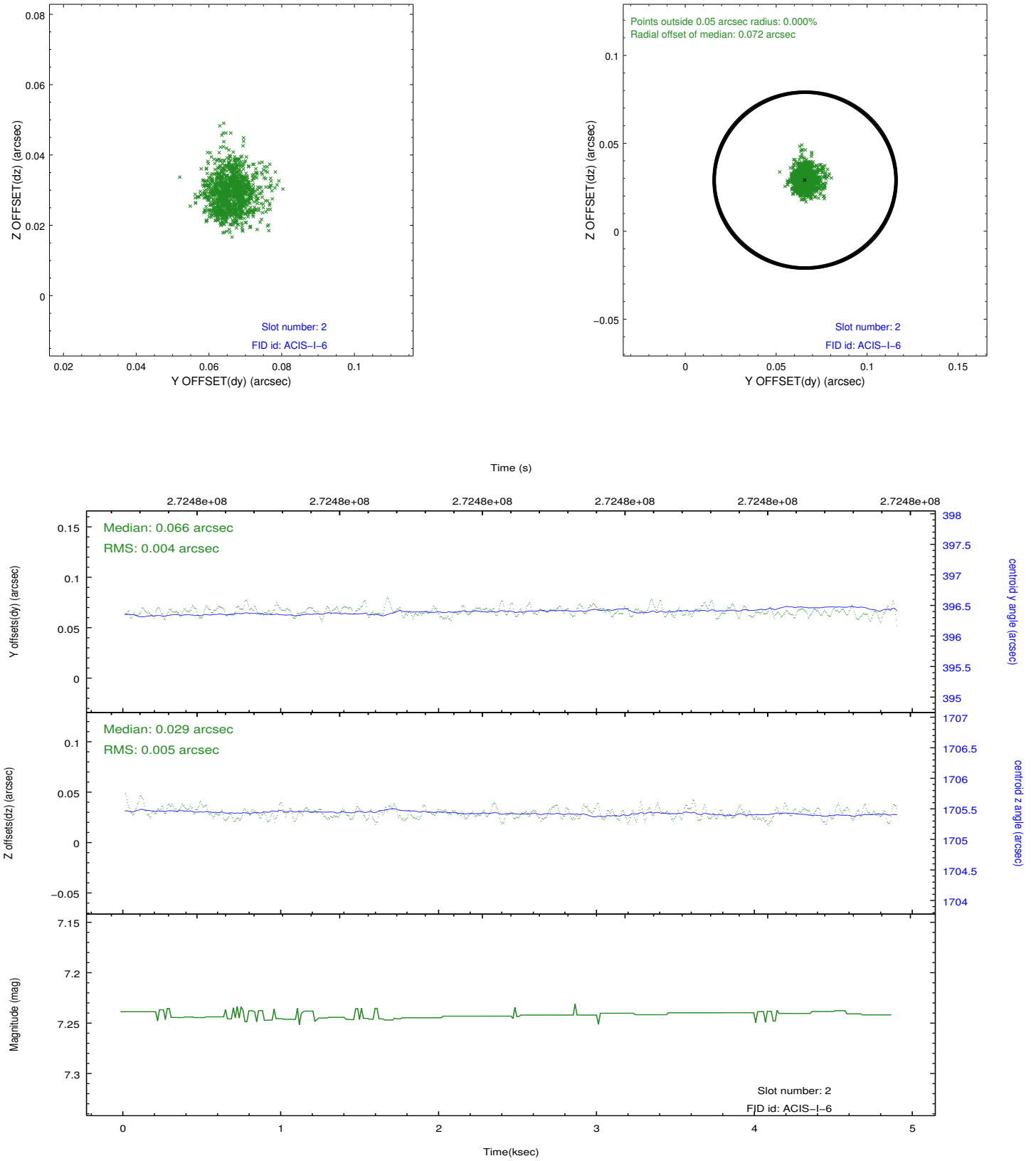
2.5.1 Slot 0



2.5.2 Slot 1



2.5.3 Slot 2



A Summary

A.1 Status

V&V Scientist	Jen Lauer
V&V Date (YYYY-MM-DD)	2012.04.08
V&V Edition	1
V&V Disposition and Status	OK
V&V Charge Time	4.47950003

A.2 Comments